

IMPORTANT INFORMATION

ASTERICK In the Body and Glass group if there is no further interchange than what is shown in the index, an asterick (*) will appear next to the interchange number.

RIGHT AND LEFT HAND The right hand and left hand do not interchange unless indicated. The first number of every part number is the right hand side. The second number is the left hand side. Example: 1754906-7. Number 6 is the right hand and the number 7 is the left hand.

CASTING AND IDENTIFICATION NUMBERS Following certain sections we have added casting and identification numbers. To use these sections simply look up the number, off the part you have numerically, there you will find the general application of the part plus our interchange number where the casting or identification number applies to.

Cars with optional equipment, such as air conditioning, heavy duty clutch, transmission, high performance, fuel injection and turbo charger will, in most cases, fit the cars without these options.

We cover only those parts and assemblies that are factory installed. Special care must be taken when identifying parts for cars with rebuilt engines or replacement parts such as radiators, generators, fuel pumps, etc., to make sure the replacement part was the same as the original equipment manufacturers. Many times replacement parts have been installed that are completely different from the original equipment manufacturers.

ABBREVIATIONS

adj	adjusting	F/M/3	Fordomatic transmission 3 speed	S.D.	sedan delivery
air cond	air conditioning	Fr	front	S.W.	station wagon
air susp	air suspension	fwd cont	forward control	sdn	sedan
alt	alternator	gen	generator	ser	series
alum	aluminum	H.D.	heavy duty	sgl	single
Amb	Ambassador	H/Per	high performance	skylight	S.W. w/ skylight roof
Amer	American	H.T.	hard top	Spec	Special
auto trans	automatic transmission (any type or spd)	Hemi	Hemispherical eng	spd	speed
BC	barrel carburetor	hyd	hydraulic	sta	stationary
brg	bearing	hydra	Hydrumatic	State	Statesman
C, 4	Ford Products automatic 3 spd dual range trans	in	inner	std trans	standard transmission 3, 4, or 5 spd
C/M	Cruise - O - Matic (3 spd , dual range)	inj	injection	stpd	stamped
carb	carburetor	J88	Jetstar 88	susp	suspension
Champ	Champion	L/	less		
Cl	clutch	L.D.	light duty		
Clb	club	L.H.	left hand	T.	ton
cent	center	L.H.D.	left hand drive	T-Bird	Thunderbird
col	column	lock axle	locking axle	T.F.	Torque Flite
Comm	Commodore	low	lower	T.G.	Turbo Glide
conv	convertible or converter or conventional	man	manual	T.I.	transistor ignition
		mdl	model	toe	toeboard
Cpe	coupe	med	medium	Tr	truck
Ctry Clb	Country Club	O.D.	over drive	trans	transmission
cyl	cylinder	O.H.V.	over head valves	up	upper
D88	Dynamic 88	open	opening	vac	vacuum
dbl	double	opt equip	optional equipment	w/	with
Dr	door	out	outer	W.B.	wheel base
elec	electrical or electric	P.B.	power brakes	wind	window
eng	engine	P.F.	Power Flite	w/o	with out
equip	equipment	P.G.	Power Glide	wh	wheel
ex or exh	exhaust	Qtr	quarter	2BC	2 barrel carburetor
exc	except	R.H.	right hand	2-4BC	2 carbs w/ 4 barrel each
ext	extension	R.H.D.	right hand drive	3-2BC	3 carburetors w/2 barrels each
F/M	Fordomatic transmission	Rr	rear	4BC	4 barrel carburetor
F/M/2	Fordomatic transmission 2 speed	re'table	retractable hard top	4 x 2	2 wheel drive
		H.T.	reverse	4 x 4	4 wheel drive
		rev	reverse		
		S88	Super 88		
		S.C.	Super Charger		

INDEX

GENERAL INFORMATION—1-19

Abbreviations & Explanations - pg 1
 Automobile 1st Serial Nos:
 1949-53 - pg 16
 1954-59 - pg 12
 1960-65 - pg 13
 Body Code Plate 1960-65 - pg 12
 Engine 1st Serial Nos:
 1949-53 - pg 16
 1954-59 - pg 10
 1960-65 - See below
 Engine Identification 1960-65 pg 11
 Model (Body Style) Ident. - pg 2
 Picture Ident. of parts covered - pg 17

AXLE GROUP—20-28

Axle Assembly - pg 20
 Axle Housing - pg 21
 Axle Shaft - pg 24
 Carrier Assembly & Ident. - pg 20
 Differential Case - pg 25
 Drive Shaft - pg 22
 Ring Gear & Pinion - pg 26
 Side Gear - pg 27
 Universal Joint - pg 28

BEARING GROUP—29-35

Clutch Throw Out - pg 30
 Differential - pg 34
 Pinion, Front - pg 32
 Rear - pg 33
 Wheel, Front, Inner - pg 29
 Outer - pg 30
 Rear - pg 34
 Transmission, Front - pg 31
 Rear - pg 31

BRAKE GROUP—36-41

Drum - pg 36
 Master Cylinder - pg 41
 Power Brake - pg 36
 Shoe - pg 38
 Wheel Cylinder - pg 39

CLUTCH GROUP—42-45

Cover - pg 42
 Disc - pg 43
 Housing - pg 44

COOLING GROUP—46-49

Air Conditioning Compressor - pg 49
 Radiator - pg 47
 Water Pump - pg 46

ELECTRIC GROUP—50-58

Alternator & Generator - pg 53
 Alternator & Generator Ident. - pg 54
 Distributor - pg 50
 Distributor Ident. No's. - pg 52
 Distributor Cap - pg 58
 Horn - pg 57
 Radio - pg 56
 Starting Motor - pg 54
 Starting Motor Ident. No's. - pg 55
 Voltage Regulator - pg 55
 Miscellaneous - pg 56
 Windshield Wiper Motor - See Body

Group

ENGINE GROUP—59-77

Camshaft - pg 63
 Camshaft Casting No's. - pg 64
 Connecting Rod - pg 69
 Crankshaft - pg 61
 Crankshaft Casting No's - pg 62
 Cylinder Block - pg 64
 Cylinder Block Casting No's - pg 66
 Cylinder Head - pg 60
 Cylinder Head Casting No's - pg 61
 Engine Assembly - pg 59
 Exhaust Manifold - pg 74
 Flywheel - pg 66
 Intake Manifold - pg 72
 Oil Pan - pg 71
 Oil Pump - pg 72
 Piston - pg 70
 Muffler - pg 77
 Rocker Arm - pg 69
 Timing Chain & Gear - pg 67
 Valve Cover - pg 76

FUEL GROUP—78-82

Carburetor - pg 78
 Fuel Pump - pg 80
 Fuel Tank - pg 81
 Fuel Tank Gauge - pg 82

SUSPENSION GROUP—83-89

Coil Spring - pg 85
 Control Arm - pg 87
 I-Beam - pg 88
 Leaf Spring - pg 84
 Power Steering Pump - pg 83
 Shock Absorber - pg 86
 Spindle - pg 85
 Steering Gear (Box) - pg 83
 Tie Rod - pg 87
 Torsion Bar - pg 89
 Torsion Bar Spec's - pg 89

TRANSMISSION GROUP—90-103

Cluster Gear - pg 94
 Converter Assy - pg 92
 Converter Cover - pg 93
 Counter Shaft - pg 95
 Low & Reverse Slide Gear - pg 97
 Main Drive Gear - pg 99
 Main Shaft - pg 96
 Manual Trans. Case - pg 94
 Miscellaneous Trans. Parts - pg 102
 Oil Pan - pg 94
 Overdrive Parts - pg 101
 Reverse Idler Gear - pg 100
 Reverse Idler Shaft - pg 101
 Second Gear - pg 98
 Third Gear - pg 99
 Transmission Assembly - pg 90

WHEEL GROUP—104-108

Hub - pg 107
 Hub & Drum Assy - pg 105
 Wheel - pg 104
 Wheel by Spec's - pg 105

BODY GROUP—109-159

Bumper Front - See Grille Assy
 Rear - pg 153
 Door, Front - pg 143
 Rear - pg 146
 Cowl Assy & Parts - pg 142
 Fender, Front - pg 141
 Rear - See Qtr Panel Rear
 Grille Assy & Parts - pg 109
 Hub Cap Ident. - pg 170
 Hood - pg 138
 Lid & Tail Gate Assy - pg 150
 Pillar, Center - pg 145
 Quarter Panel, Rear - pg 147
 Roof - pg 139
 Seat, Front - pg 158
 Seat Track, Manual - pg 159
 Tail & Back Up Light - pg 152
 Window Regulator:
 Front, Manual - pg 154
 Electric - pg 156
 Rear, Manual - pg 155
 Electric - pg 157
 Windshield Wiper Motor - pg 157

GLASS GROUP—160-169

Back Window - pg 166
 Front Door Vent. - pg 161
 Front Door Window - pg 162
 Rear Door Window - pg 163
 Rear Qtr Vent & Window - pg 164
 Windshield - pg 160
 Truck Glass - pg 169

GENERAL INFORMATION

CHRYSLER PRODUCTS - GENERAL INFORMATION

	PAGE
AUTOMOBILE 1st SERIAL NOS, 1949-53	pg 16
1954-59	pg 12
1960-65	pg 13
BODY CODE PLATE 1960-65	pg 12
ENGINE 1st SERIAL NOS, 1949-53	pg 16
1954-59	pg 10
1960-65	See below
ENGINE IDENTIFICATION 1960-65	pg 11
MODEL (BODY STYLE) IDENT.	pg 2
PICTURE IDENT. OF PARTS COVERED	pg 17

MODEL IDENTIFICATION

CHRYSLER	CATALOG CODE	2Dr Cpe	2Dr Sdn	2Dr SW	2Dr HT	2Dr Conv	4Dr Sdn	4Dr HTSW	4Dr HT	4Dr Sdn SW
'50 CHRYSLER 6 & 8 cyl										
Royal 6	C48		X				X-X*			X (Twn & Cty) X (exc above)
Windsor 6	C48		X (Newport)		X	X	X (Trav 6 pass) X (6 pass exc Trav) X (8 pass)			
Saratoga 8	C49		X				X			
New Yorker 8	C49		X		X	X	X			
Town & Country 8	C49				X					
'51 CHRYSLER 6-250										
Windsor 6	C51		X				X-X*			X
Windsor Del 6	C51		X		X	X	X (Trav 6 pass) X (6 pass exc Trav) X (8 pass)			
New Yorker 8	C52		X		X	X	X			X
Saratoga 8	C55		X				X-X*			X
'52 CHRYSLER 6-265 L-Head: 8-331 O.H.V.										
Windsor 6	C51		X				X-X*			X
Windsor Del 6	C51				X	X	X			
New Yorker 8	C52				X	X	X			
Saratoga 8	C55						X-X*			X
'53 CHRYSLER 6-265 L-Head: 8-331 O.H.V.										
Windsor 6	C60		X				X-X*			X
Windsor Del 6	C60				X	X	X			
New Yorker 8	C56		X		X		X-X*			X
New Yorker Del 8	C56		X		X	X	X			
'54 CHRYSLER 6-225 L-Head: 5-331 O.H.V.										
Windsor Del 6	C62		X		X	X	X-X*			X
New Yorker 8	C63		X		X		X-X*			X
New Yorker Del 8	C63		X		X	X	X			
'55 CHRYSLER 8-301 Wind: 8-331 exc Wind										
Windsor 8	C67		X		X	X	X			X
New Yorker 8	C68		X		X	X	X			X
300 8	C68				X					
'56 CHRYSLER 8-331 Wind: 5-354 exc Wind										
Windsor	C71		X		X	X	X		X	X
New Yorker	C72		X		X	x	X		X	X
300	C72				X					
'57 CHRYSLER										
Windsor 8-354	C75-1				X		X		X	X
Saratoga 8-354	C75-2				X		X		X	
New Yorker 8-392	C76				X	X	X		X	X
300C 8-392	C76				X	X				
'58 CHRYSLER										
Windsor 8-354	LC1-1				X		X		X	X-X*
Saratoga 8-354	LC2-M				X		X		X	
New Yorker 8-392	LC3-H				X	X	X		X	X-X*
300D 8-392	LC3-S				X	X				
'59 CHRYSLER										
Windsor 8-383	MC1-L				23	27	41		43	45A-45B*
Saratoga 8-383	MC2-M				23		41		43	
New Yorker 8-413	MC3-H				23	27	41		43	45A-45B*
300E 8-413	MC3-H				23	27				
'60 CHRYSLER										
Windsor 8-383	PC1-L				23	27	41	45A-B*	43	
Saratoga 8-383	PC2-M				23		41		43	
New Yorker 8-413	PC3-H				23	27	41	45A-B*	43	
300F 8-413	PC3				23	27				
'61 CHRYSLER										
Newport 8-361, 353	RC1-1				23	27	41	45A-B*	43	
Windsor 8-383	RC2-M				23		41		43	
New Yorker 8-413	RC3-H				23	27	41	45A-B*	43	
300G 8-413	RC1-P				23	27				

GENERAL INFORMATION

CHRYSLER cont	CATALOG CODE	2Dr Cpe	2Dr Sdn	2Dr SW	2Dr HT	2Dr Conv	4Dr Sdn	4Dr HTSW	4Dr HT	4Dr Sdn SW
'62 CHRYSLER										
Newport 8-361, 383	SC1-L				812	815	813	858-9*	814	
300 8-383	SC2-M				822	825			824	
300H 8-413	SC2-M					842			845	
New Yorker 8-413	SC3-H						833	878-9*	834	
'63 CHRYSLER 8-361, 383, 413										
Newport	TC1-L				812	815	813	858-9*	814	
300	TC2-M				822	825			824	
300J	TC2-M				842					
300 Pacesetter					802	805				
New Yorker	TC3-H						833	878-9*	884 (Salon Limo, 834 (exc above))	
'64 CHRYSLER 8-361, 383, 413										
Newport	VC1-L				812	815	813	858-9*	814	
300	VC2-M				822	825			824	
New Yorker	VC3-H						853	878-9*	834	
New Yorker Salon	VC3-H								884	
300K	VC2				842	845				
'65 CHRYSLER 8-353, 413										
Newport	AC1-L				C12	C15	C13 (exc 6 wind) C18 (6 wind)		C14	C56-7*
300	AC2-M				C22	C25			C24	
New Yorker	AC3-H				C32		C38		C34	C76-7*
300L	AC2-P				C42					
DESOTO										
'50 DESOTO										
Deluxe 6	S14		X					X-X* (exc Carryall) X (6 pass Carryall)		
Custom 6	S14		X		X	X		X-X*(exc below) X (Suburban 8 pass)		X (wood) X (steel)
'51 DESOTO 6-250										
Deluxe 6	S15-1		X					X-X* (exc Carryall) X (6 pass Carryall)		
Custom 6	S15-2		X		X	X		X-X* (exc below) X (Suburban 8 pass)		X
'52 DESOTO 6-250 8-276										
Deluxe 6	S15-1		X					X-X* (exc Carryall) X (6 pass Carryall)		
Deluxe 6	S15-2		X		X	X		X-X* X (9pass)		X
Firedome 8	S17		X		X	X		X-X*		X
'53 DESOTO 6-250 8-276										
Powermaster 6	S18		X		X			X-X*		X
Firedome 8	S16		X		X	X		X-X*		X
'54 DESOTO 6-250 8-276										
Powermaster 6	S20		X					X-X*		X
Firedome 8	S19		X		X	X		X-X*		X
'55 DESOTO 8-290: 185 H.P. on Firedome, 200 H.P. on Fireflite										
Firedome 8	S22					X	X			X
Fireflite 8	S21					X	X			X
'56 DESOTO 8-341 Adventurer, 8-330 exc Adventurer										
Firedome	S23			(Seville) (Sportsman)	X X	X	X	(Seville)	X X (Sportsman)	X X
Fireflite	S24			(Sportsman)	X	X (exc) X (Pacecar)	X		X	
Adventurer	S24				X					
'57 DESOTO 8-325 Firesweep, 8-341, 345 exc Firesweep										
Firesweep	S27				X		X		X	X-X*
Firedome	S25				X	X	X		X	
Fireflite	S26				X	X	X		X	X-X*
Adventurer	S26				X	X				
'58 DESOTO 8-350 Firesweep, 8-361 exc Firesweep										
Firesweep	LS1-L				X	X	X		X	X-X*
Firedome	LS2-M				X	X	X		X	
Fireflite	LS3-H				X	X	X		X	X-X*
Adventurer					X	X				
'59 DESOTO 8-361 on Firesweep, 8-383 exc Firesweep										
Firesweep	MS1-L				23	27	41		43	45A-B*
Firedome	MS2-M				23	27	41		43	
Fireflite	MS3-H				23	27	41		43	45A-B*
Adventurer	MS3-H				23	27				

GENERAL INFORMATION

DESOTO cont	CATALOG CODE	2Dr Cpe	2Dr Sdn	2Dr SW	2Dr HT	2Dr Conv	4Dr Sdn	4Dr HTSW	4Dr HT	4Dr Sdn SW
'60 DESOTO 8-383 on Adventurer, Firelite	PS1-L				23		41		43	
Adventurer	PS3-M				23		41		43	
'61 DESOTO 8-361	RS1-L				23				43	
DART										
'63 DART 6-170 6-225										
170	TL1-L		711				713			756
270	TL1-H		731				733			776
GT	TL1-P				742	735	745			
'64 DART 6-170 6-225										
170	VL1-L		*711				713			756
270	VL1-H		731				733			776
GT	VL1-P				742	735	745			
'65 DART 6-170, 225 & 8-273										
Dart 6 cyl	AL1-L		L11				L13			L56
Dart 270 6 cyl	AL1-H		L31		L32	L35	L33			L76
Dart G. T. 6 cyl	AL1-P				L42	L45				
Dart 8 cyl	AL2-L		L11				L13			
Dart 270 8 cyl	AL2-H		L31		L32	L35	L33			L76
Dart G. T. 8 cyl	AL2-P		L42			L45				
DODGE										
'50 DODGE 6 cyl										
Wayfarer	D33	X	X			X(Sport) X(exc Sport)				
Meadowbrook	D34						X			
Coronet	D34		X		X	X	X-X*(exc Twn) X(6 pass Twn)			X-X*
'51-52 DODGE 6 cyl										
Wayfarer	D41	X	X		X					
Meadowbrook	D42						X			
Coronet	D42		X		X	X	X-X*			X
'53 DODGE 6-230 L-Head: 8-241										
Meadowbrook 6	D46		X				X			
Meadowbrook Spec 6	D46		X				X			
Meadowbrook 6	D47			X						
Coronet 6	D46		X				X			
Coronet 8	D44		X				X			
Coronet 8	D48			*X	X					X
'54 DODGE 6-230: 8-241										
Meadowbrook 6	D51-1		X				X			
Coronet 6	D51-2		X				X			
Coronet 6	D52			X						X-X*
Meadowbrook 8	D50-1		X				X			
Coronet 8	D50-2		X				X			
Coronet 8	D53-2			X	X	X				X-X*
Royal 8	D50-3		X				X			
Royal 8	D53-3				X	X				
'55 DODGE 6-230 8-270										
Coronet 6	D56-1		X	X			X			X-X*
Coronet 8	D55-1 (exc below) (Club sdn)		X	X	X		X			X-X*
Royal 8	D55-2				X		X			X-X*
Royal Cust 8	D55-3				X	X	X(Lancer) X(exc above)			
'56 DODGE 6-230: 8-270 Coronet: 8-315 on Royal										
Coronet 6	D62		X	X			X			
Coronet 8	D63-1		X	X	X	X	X	X		X-X*
Royal 8	D63-2			X	X		X			X-X*
Custom Royal 8	D63-3				X(exc D500)	X(exc D500)	X(exc D500)			X(exc D500)
'57 DODGE 6-230: 8-354 D500: 8-325 exc Coronet										
Coronet 6	D72		X				X			
Coronet 8	D66		X		X	X	X	X		
Royal 8	D67-1				X		X			
Custom Royal 8	D67-2				X	X	X			
Station Wagons 8	D70			X						X-X*
Station Wagons 8	D71									X-X*
	D50D		X			X				

GENERAL INFORMATION

DODGE cont	CATALOG CODE	2Dr Cpe	2Dr Sdn	2Dr SW	2Dr HT	2Dr Conv	4Dr Sdn	4Dr HTSW	4Dr HT	4Dr Sdn SW
'58 DODGE 6-230: 8-325 on Coronet: 8-361 on D500: 8-350 exc others										
Coronet 6	LD1-L1		X		X		X			
Coronet 8	LD2-L1		X		X	X	X		X	
Royal 8	LD2-M				X		X		X	
Custom Royal 8	LD3-H			(Regal)	X	X	X		X	X-X*
				(exc Regal)	X					X-X*
Station Wagon 8	LD3-L			X						
'59 DODGE 6-230: 8-326 on Coronet: 8-361 or 8-383 exc Coronet										
Coronet 6	MD1-L		21		23		41			
Coronet 8	MD2-L		21		23	27	41		43	
Royal 8	MD3-M				23		41		43	
Custom Royal 8	MD3-H				23	27	41		43	
Sierra	MD3-L									45A-B*
'60 DODGE										
Dart Series 6-225 & 8-318, 361, 383										
Seneca 6	PD3-L		21				41			45
Pioneer 6	PD3-M		21		23		41			45A-B*
Phoenix 6	PD3-H				23	27	41		43	
Seneca 8	PD4-L		21				41			45
Pioneer 8	PD4-M		21		23		41			45A-B*
Phoenix 8	PD4-H				23	27	41		43	
Dodge Series 8-361 on Matador: 8-383 on Polara										
Matador 8	PD1-L				23		41		43	45A-B*
Polara 8	PD2-H				23	27	41	46A-B*	43	
'61 DODGE										
Dart Series 6-225: 3-318										
Seneca 6	RD3-L		21				41			45
Pioneer 6	RD3-M		21		23		41			45A-B*
Phoenix 6	RD3-H				23		41		43	
Seneca 8	RD4-L		21				41			45
Pioneer 8	RD4-M		21		23		41			45A-B
Phoenix 8	RD4-H				23	27	41		43	
Dodge Series 8-361										
Polara 8	RD1-L				23	27	41	46A-B*	43	
'62 DODGE 6-225 8-318, 361, 413, 383										
Dart 6	SD1-L		411				413			456
Dart 330 6	SD1-M		421		422		423			466
Dart 440 6	SD1-H				432		433			
Dart 8	SD2-L		511				513			556
Dart 330 8	SD2-M		521		522		523			566-7*
Dart 440 8	SD2-H				532	535	533		534	576-7*
Polara 8	SD2-P				542	445			544	
Custom 880 8	SD3-L				612	615	613	658-9*	614	
'63 DODGE 6-225: 8-318, 361, 383, 426										
330 6	TD1-L		411				413			456-7*
440 6	TD1-M		421		422		423			
Polara 6	TD1-H				432		433			
330 8	TD2-L		611				613			656-7*
440 8	TD2-M		621		622		623			666-7*
Polara 8	TD2-H				632	635	633		634	
Polara 500 8	TD2-P				642	645				
880 8	TA3-E						503			556-7*
Custom 880 8	TA3-L				512	515	513	558-9*	514	
'64 DODGE 6-225: 8-318, 351: opt 8-383, 426										
330 6	VD1-L		411				413			456-7*
440 6	VD1-M		421		422		423			
Polara 6	VD1-H				432		433			
330 8	VD2-L		611				613			656-7*
440 8	VD2-M		621		622		623			666-7*
Polara 8	VD2-H				632	635	633		634	
880 8	VA3-E						503			556-7*
Custom 880 8	VA3-L				512	515	513	558-9*	514	
'65 DODGE										
Coronet series 6-225 & 8-273, 318, 361, 426										
Coronet 6			W21				W23			W56
Coronet 6	AW1-L		W11				W13			W76
Coronet 440 6	AW1-H				W32	W35	W33			
Coronet 8			W21				W23			W56
Coronet 8	AW2-L		W11				W13			W76-7*
Coronet 440 8	AW2-H				W32	W35	W33			
Coronet 500 8	AW2-P				W42	W45				
Polara series 8-361, 383, 413, 426										
Polara 8							D23			
Polara 8	AD2-L				D12	D15	D13		D14	D56-7*
Custom 880	AD2-H				D32	D35	D38		D34	D76-7*
Monaco	AD2-P				D42					

DODGE TRUCK - SEE END OF CHRYSLER PRODUCTS MODEL IDENTIFICATION

GENERAL INFORMATION

	CATALOG CODE	2Dr Cpe	2Dr Sdn	2Dr SW	2Dr HT	2Dr Conv	4Dr Sdn	4Dr HTSW	4Dr HT	4Dr Sdn SW
LANCER										
'61 LANCER 6-170, 225										
Lancer 170	RW1-L		21				41		45	
Lancer 770	RW1-H				X		41		45	
'62 LANCER 6-170, 225										
Lancer 170	SL1-L		711				713		756	
Lancer 770	SL1-H		731				733		776	
G. T.	SL1-P				742					
PLYMOUTH										
'50 PLYMOUTH 6-217										
Del 111" wh base	P19	X (3 pas)	X (6 pas)	X						
Del 118" wh base	P20		X				X			
Spec Del 118 wh base	P20		X	X		X	X			
'51-52 PLYMOUTH 6-217										
Concord	P22	X	X	X (Sub)	X					
				X (Savoy)						
Cambridge	P23		X				X			
Cranbrook	P23		X		X	X	X			
'53 PLYMOUTH 6-217										
Cambridge	P24-1		X	X			X			
Cranbrook	P24-2		X	X (Savoy)	X	X	X			
'54 PLYMOUTH										
Plaza	P25-1		X	X			X			
Savoy	P25-2		X				X			
Belvedere	P25-3			X	X	X	X			
'55 PLYMOUTH 6-230 & 8-241, 260										
Plaza 6	P26		X	X			X			X
Savoy 6	P26		X				X			X
Belvedere 6	P26		X		X		X			X
Plaza 8	P27		X	X			X			X
Savoy 8	P27		X				X			X
Belvedere 8	P27		X		X	X	X			X
'56 PLYMOUTH 6-230 & 8-277, 270 & Fury 8-303										
Plaza 6	P28-1		X	X			X			X
Savoy 6	P28-2		X		X		X			X
Belvedere 6	P28-3		X		X		X	X		X (Custom) X (Sport)
Plaza 8	P29-1		X	X			X			X
Savoy 8	P29-2		X		X		X			X
Belvedere 8	P29-3		X		X (Fury)	X	X	X		X (Custom) X (Sport)
					X (exc Fury)					
'57 PLYMOUTH 6-230 & 8-277, 301 & 8-318 on Fury										
Plaza 6	P30-1		X	X			X			
Savoy 6	P30-2		X	X	X		X	X		X-X*
Belvedere 6	P30-3		X		X		X	X		X-X*
Plaza 8	P31-1		X	X			X			
Savoy 8	P31-2		X	X	X		X	X		X-X*
Belvedere 8	P31-3	X		X (Fury)	X	X	X	X		X-X*
				(exc Fury)	X					
'58 PLYMOUTH 6-230 & 8-318, 350										
Plaza 6	LP1-L		X	X			X			X
Savoy 6	LP1-M		X	X	X		X	X		X-X*
Belvedere 6	LP1-H		X		X		X	X		X-X*
Plaza 8	LP2-L		X	X			X			X
Savoy 8	LP2-M		X	X	X		X	X		X-X*
Belvedere 8	LP2-H		X		X (Fury)	X	X	X		X-X*
					X (exc Fury)					
'59 PLYMOUTH 6-230 & 8-318, 361										
Savoy 6	MP1-L		(6 pass) 21 (3 pass) 22	25			41			45A
Belvedere 6	MP1-M		21		23		41	43		45A
Savoy 8	MP2-L		21	25			41			45A
Belvedere 8	MP2-M		21	25	23	27	41	43		45A-B*
Fury 8	MP2-H				23 (exc Sport)		41	43		
	MP2-P				23 (Sport)	27				45A-B*

GENERAL INFORMATION

PLYMOUTH cont	CATALOG CODE	2Dr Cpe	2Dr Sdn	2Dr SW	2Dr HT	2Dr Conv	4Dr Sdn	4Dr HTSW	4Dr HT	4Dr Sdn SW
'60 PLYMOUTH 6-225 & 8-318, 361, 383										
Savoy 6	PP1-L	(exc Fleet)	21 (Fleet) X	25			41 (exc Fleet) X (Fleet)			45
Belvedere 6	PP1-M		21		23		41			45
Fury 6	PP1-H				23		41		43	
Savoy 8	PP2-L	(exc Fleet)	21 (Fleet) X	25			41 (exc Fleet) X (Fleet)			45
Belvedere 8	PP2-M		21		23		41			45A-B*
Fury 8	PP2-H				23	27	41		43	45A-B*
'61 PLYMOUTH 6-225 & 8-318, 361, 383										
Savoy 6	RP1-L	(exc Fleet)	21 (Fleet) X	25			41 (exc Fleet) X (Fleet)			45
Belvedere 6	RP1-M		21		23		41			45
Fury 6	RP1-H				23		41		43	
Savoy 8	RP2-L	(exc Fleet)	21 (Fleet) X	25			41 (exc Fleet) X (Fleet)			45
Belvedere 8	RP2-M		21		23		41			45A & B*
Fury 8	RP2-L				23	27	41		43	45A-B*
'62 PLYMOUTH 6-225 & 8-318, 361, 383, 413										
Savoy 6	SP1-M		201 (Fleet)				203 (Fleet)			256
			211 (exc Fleet)				213 (exc Fleet)			
Belvedere 6	SP1-M		221		222		223			266
Fury 6	SP1-H				232		233			
Savoy 8	SP2-L		311 (exc Fleet)				313 (exc Fleet)			356
			301 (Fleet)				303 (Fleet)			
Belvedere 8	SP2-M		321		322		323			366-7*
Fury 8	SP2-H			(exc Sport)	332	335 (exc)	333		334	376-7*
	SP2-P			(Sport)	342	345 (Sport)				
'63 PLYMOUTH 6-225 & 8-318, 361, 383, 426										
Savoy 6	TP1-L		211 (exc Fleet)				213 (exc Fleet)			256-7*
			201 (Fleet)				203 (Fleet)			
Belvedere 6	TP1-M		221		222		223			
Fury 6	TP1-H				232		233			
Savoy 8	TP2-L		311 (exc Fleet)				313 (exc Fleet)			356-7*
			301 (Fleet)				303 (Fleet)			
Belvedere 8	TP2-M		321		322		323			366-7
Fury 8	TP2-H			(exc Sport)	332	335 (exc)	333		334	376-7
	TP2-P			(Sport)	342	345 (Sport)				
'64 PLYMOUTH 6-225 & 8-318, 361, 383, 426										
Savoy 6	VP1-L		211				213			256-7*
Belvedere 6	VP1-M		221		222		223			
Fury 6	VP1-H				232		233			
Savoy 8	VP2-L		311				313			356-7*
Belvedere 8	VP2-M		321		322		323			266-7*
Fury 8	VP2-H			(exc Sport)	332	335 (exc)	333		334	376-7*
	VP2-P			(Sport)	342	345 (Sport)				
'65 PLYMOUTH										
Belvedere series 6-225, & 8-273, 318, 361, 383, 426										
Belvedere I 6	AR1-L		R11				R13			R56
Belvedere II 6	AR1-H				R32	R35	R33			R76-7*
Belvedere I 8	AR2-L		R11				R13			R56
Belvedere II 8	AR2-H				R32	R35	R33			R76-7*
Satellite 8	AR2-P				R42	R45				
Fury series 6-225, & 8-318, 361, 383 & 246										
Fury I 6	AP1-L		P11				P13			P56
Fury II 6	AP1-M		P21				P23			
Fury III 6	AP1-H				P32		P33			
Fury I 8	AP2-L		P11				P13			P56
Fury II 8	AP2-M		P21				P23			P66-7*
Fury III 8	AP2-H				P32	P35	P33	P34		P76-7*
Sport Fury 8	AP2-P				P42	P45				

GENERAL INFORMATION

VALIANT	2Dr Cpe	2Dr Sdn	2Dr SW	2Dr HT	2Dr Conv	4Dr Sdn	4Dr HTSW	4Dr HT	4Dr Sdn SW
'60 VALIANT 6-170,									
V100 QX1-L						41			45A-B*
V200 QX1-H						41			45A-B*
'61 VALIANT 6-170, 225									
V100 RV1-L		21				41			45
V200 RV1-H				23		41			45
'62 VALIANT 6-170, 225									
V100 SV1-L		111				113			156
V200 SV1-H		131				133			176
Signet 200 SV1-P				142					
'63 VALIANT 6-170, 225									
V100 TV1-L		111				113			156
V200 TV1-H		131			135	133			176
Signet 200 TV1-P				142	145				
'64 VALIANT 6-170, 225 & 8-273									
V100 VV1-L		111				113			156
V200 VV1-H		131			135	133			176
Signet 200 VV1-P				142	145				
'65 VALIANT 6-170, 225 & 8-273									
Valiant 100 6 AV1-L		V11				V13			V56
Valiant 200 6 AV1-H		V31			V35	V33			V76
Valiant Signet 6 AV1-P				V42	V45				
Barracuda 6 AV1-P				V89					
Valiant 100 8 AV2-L		V11				V13			V56
Valiant 200 8 AV2-H		V31			V35	V33			V76
Valiant Signet 8 AV2-P				V42	V45				
Barracuda 8 AV2-P				V89					

DODGE TRUCK 1/2, 3/4, AND 1 TON

DODGE MODEL IDENTIFICATION

YEAR	SERIES	TONAGE	ENGINES
'48-53	B	1/2	6-217
	C	3/4	6-217
	D	3/4 & 1	6-230
'54-56	B	1/2	6-217 in '54:6-230:8-241, 259
	C	3/4	6-217 in '54 :6-230: 8-241, 259
	D	1	6-230 : 8-241, 259
'57-65	100	1/2	6-170 on A100: 6-225: 8-273 in '65 (same as pass. 8-283., not covered in truck book)
	200	3/4	6-225: 8-315 in '57-58 8-318 in '59-65
	300	1	6-225, 251: 8-315 in '57-58:8-318 in '59-65

In this catalog, letters preceding the series number stand for the following :

- A-Forward control for '64-65 100 ser . Pickup or Van
- D- 4 x 2 conventional cab (pickup)
- P- Forward control. For 200 & 300 ser
- W-4 x 4 conventional cab. Note: In '57 it appears as a W300 which was the only 300 ser 4 x 4 available for '57. It is exactly the same as a '58-'65 WM300.
- WM- One of the '58-65 300 ser 4 x 4. It is commonly called a Power Wagon or Military truck. It can be identified by being the only 1 ton pickup with a 2 piece windshield.
- Crew Cab - 4 Door truck

GENERAL INFORMATION

ENGINE FIRST SERIAL NUMBERS

1949-53 - SEE PAGE 16

FIRST ENGINE SERIAL NUMBERS 1954 - 1959

NOTE: There are no engine serial numbers after 1959. For '60 and up see "Engine Identification".

LOCATION OF ENGINE SERIAL NUMBERS:

1955-1959 On 6 cyl it is located on left side of the block at the front, and below the cylinder head. On 8 cyl is located on top of the cylinder block behind the water pump, except the following:

Plymouth

1957-1959 On the 8 cyl it is located on the front of the block beneath left hand cylinder head. On the 1958 8-350 & 8-361 engines, it is located on the right hand side of the cylinder block beneath the distributor.

NOTE: To interpret the model symbols for the below automobiles see "Model Identification".

CHRYSLER & IMPERIAL 1954 - 1958

1954	Six	C54-1001
	V8	C54-8-1001
1955	C67	WE55-1001
	C68	NE55-1001
	C69	CE55-1001
	C70	CE55-1001
	300	3NE55-1001
1956	C70	CE56-1001
	C71	WE56-1001
	C72	NE56-1001
	C73	CE56-1001
	300B	3NE56-1001
1957	C75-1	WE57-1001
	C75-2	LE57-1001
	C76	NE57-1001
1958	LC-1L	58W-1001
	LC2L	58S-1001
	LC-3L	58N-1001
	LC-3S	58N3-1001
	LY1-L.M.H.	58C-1001
<u>DESOTO 1954-1959</u>			
1954	S19	S19-1001
	S20	S20-1001
1955	S21	S21-1001
	S22	S22-1001
1956	S23	S23-1001
	S24	S24-1001
1957	S25	S25-1001

S26 S26-1001

1958

S27	KDS-1001
LS-1	L-350-1001
LS-2	L360-1001
LS-3	L-360-1001

1959

MS-1	ML-361-1001
MS-2	ML-383-1001
MS-3	ML-393-1001

DODGE 1954-1959

1954

D50	D50-1001
D51	D51-1001
D52	D51-1001
D53	D50-1001

1955

D55-1	D551-1001
D55-2	D551-1001
D55-3	D553-1001
D56	D56-1001

1956

D62	D62-1001
D63-1	D63-1-1001
D63-2	D63-3-1001
D63-3	D63-3-1001

1957

D72-1 (early)	D72-1001
D72-1 (late)	KDS-1001
D72-2 (early)	D72-1001
D72-2 (late)	KDS-1001
D66-1	KDS-1001
D66-2	KDS-1001
D67-1	KDS-1001
D67-2	KDS-1001
D70	KDS-1001

D71	KDS-1001
D500	KD-500-1001

1958

LD1	L230-1001
LD2	L325-1001
LD3	L350-1001

1959

Six	ML-230-1001
V8-325	ML-325-1001
V8-361	ML-361-1001
V8-383	ML-383-1001

IMPERIAL - SEE CHRYSLER

PLYMOUTH 1954-1959

1954

All	P25-1001
-----	-------	----------

1955

P26	P26-1001
P27	P27-1001

1956

P28	P28-1001
P29	P29-1001
Fury	FP29-1001

1957

P30	P30-1001
P31 (277 eng)	LP31-1001
P31 (301 eng)	P31-1001
P31 (318 eng)	FP31-1001

1958

LP1	LP6-1001
LP2 (318 eng)	LP8-1001
LP2 (350 eng)	L350-1001
Fury (318 eng)	FLP-1001

1959

Six	M230-1001
V8-318	MP8-1001
V8-361	ML361-1001

NOTE: There are no engine serial numbers after 1959 For 1960 and up see "Engine Identification".

ENGINE IDENTIFICATION 1960 AND UP

ENGINE IDENTIFICATION 1960 AND UP

LOCATION OF ENGINE NUMBERS

- 1960-1962 6 cyl It is located on left side of block at the front and below the cylinder head.
- 8 cyl It is located on top of the cylinder block behind the water pump, except the following. Plymouth 8 cyl is located on front of block beneath the left hand cylinder head.
- 1963-1965
 - 6-170, 225 It is located on right side, in front of block and below the cylinder head.
 - 8-273, 318 It is located on left side in front of block, below cylinder head.
 - 8-361, 383 It is located on right side, front of block, below ignition distributor.
 - 8-413 It is located on top, front of block, left of water pump.
 - 8-426 It is located on left side, front of block, behind thermostat housing.

IDENTIFICATION OF ENGINES 1960-1965

Example of an engine identification number is P-38-8-3.

1. The first letter or the first two letters designate the series or year.

- P 1960 pass
- TP 1960 truck
- R 1961 pass
- TR 1961-62 truck
- S 1962 pass
- T 1963 pass
- TT 1963 truck
- V 1964 pass
- VT 1964 truck
- A 1965 pass

NOTE: IF another letter "P" is included in the above it represents a "premium engine. In 1963 & 1964 the 8-426 engines have starting numbers as follows: T M P for 11.1 compression ratio, and T M P H C for 13,5:1 ratio in 1963 and 12.5:1 compression ratio in 1964. In 1965 the 8-426 engines have starting numbers as follows: A-426 for 11:1 compression ratio and AH-426-HC for 12.5:1 ratio. Also on the 8-426 engine the letter "H" following the series denotes "hemispherical". Also see note under below #2.

2. The numbers following the letters designate the cubic inch of the engine.

- 17 170 cubic inch
- 22 225 cubic inch
- 25 251 cubic inch
- 26 265 cubic inch
- 27 273 cubic inch
- 318 318 cubic inch
- 36 361 cubic inch 1960-1964
- 361 361 cubic inch 1965
- 38 383 cubic inch 1960-1964
- 383 383 cubic inch 1965
- 41 413 cubic inch 1960-1964
- 413 413 cubic inch 1965
- 426 426 cubic inch

NOTE: In 1963 the Chrysler 300J 8-413 has a starting engine number of "C-300J". In 1964 the Chrysler 300 K 8-413 has a starting engine number of "C-300K". In 1963-1965 the letters "H & C" following the cubic inch displacement denotes high compression.

3. The last two numbers designate the month and day built.
Example: P-38-8-3 - August 3.

NOTE: The 8-318 is not affected by this method of dating. Its listings end in a serial sequence of numbers starting with the numbers 1001.

Example of a 8-318 listing: P-318-1001.

GENERAL INFORMATION

BODY CODE PLATE

LOCATION :

Under hood usually on cowl or fender wall or radiator shroud.

USED FOR:

This plate states the schedule number, body code, trim code and paint code.

BODY CODE:

The body code number on this plate states in code the type of body style of that make car.

EXAMPLE: Body #222 is a '62-64 Plymouth Belvedere 6 cyl 2 Dr H. T.

See "Model Identification" of '62-64 Plymouth.

CROSS OVER OF BODY # TO "MODEL IDENTIFICATION":

To identify what make and type of body a certain body number is, or visa versa, See Chrysler Products "Model Identification" starting with 1960. The numbers under the headings are the "body code numbers".

IMPORTANT NOTE:

A 1960 & 1961 body code number under "Model Identification" states the body style only. It does not mean a certain make car or year. A '62-64 body code number under "Model Identification" states the make car, its body style, and whether it is a 6 or 8 cyl. It does not state the year of that particular car. A '65 body code number under "Model Identification" states the make car and its body style. It does not state whether it is a 6 or 8 cyl.

AUTOMOBILE FIRST SERIAL NUMBERS 1954-59

1949-53 - SEE PAGE 16

1954-1959

LOCATION: On left front door pillar.

NOTE: To interpret the model symbols for the below automobiles see "Model Identification".

NOTE: The symbols in parenthesis stand for the following assembly plants:

- (1) Detroit, Michigan
- (2) Los Angeles, California
- (3) Others

CHRYSLER & IMPERIAL 1954-1959

1954

C62 70141001(1)
 C62 65014001(2)
 C63-1 76591001(1)
 C63-1 66510001(2)
 C63-2 7249001(1)
 C63-2 69005001(2)
 C64 7775001
 C66 7817001

1955

C67 W55-1001(1)
 C67 W55L-1001(2)
 C68 N55-1001(1)
 C68 N55L-1001(2)
 C69 C55-1001
 C70 C55-1001
 C68-300 3N55-1001

1956

C70 C56-1001
 C71 W56-1001(1)
 C71 W56L-1001(2)
 C72 N56-1001(1)
 C72 N56L-1001(2)
 C72-300 3N56-1001
 C73 C56-1001

1957

C75-1 W57-1001(1)
 C75-1 W57L-1001(2)
 C75-2 L57-1001(1)
 C75-2 L57L-1001(2)
 C76 N57-1001(1)
 C76 N57L-1001(2)
 C76-300 3N57-1001
 IM-1,2,4 C57-1001

1958

LC1-L LC1-1001(1)
 LC1-L LC1-L-1001(2)
 LC2-M LC2-1001(1)
 LC2-M LC2L-1001(2)
 LC3-H LC3-1001(1)
 LC3-H LC3L-1001(2)
 LC3-S-"300D" LC4-1001
 LY1-L,M,H LY1-1001

1959

MC1-L M511100001(1)
 MC1-L M514100001(2)
 MC2-M M531100001(1)
 MC2-M M534100001(2)
 MC3-H M551100001(1)
 MC3-H M554100001(2)
 MC3-H-300E M591100001
 Suburban ... M571100001(1)
 Suburban ... M574100001(2)
 MY1-L M617100001
 MY1-M M637100001
 MY1-H M657100001

DELTO 1954-1959

1954

S19 55130001(1)
 S19 64017001(2)
 S20 50306001(1)
 S20 62043001(2)

1955

S21 50330001(1)
 S21 62045001(2)
 S22 55185001(1)
 S22 64022001(2)

1956

S23 55258001(1)
 S23 64028001(2)
 S24 50366001(1)
 S24 62048001(2)

1957

S25 55332001(1)
 S25 64035001(2)
 S26 50396001(1)
 S26 62053001(2)
 S27 58001001(1)
 S27 60014001(2)

1958

LS1-L LS1-1001(1)
 LS1-L LS1L-1001(2)
 LS2M LS2-1001(1)
 LS2M LS2L-1001(2)
 LS3H LS3-1001(1)
 LS3-H LS3L-1001(2)
 LS3-S LS3-1001(1)

1959

MS1-L M412100001(1)
 MS1-L M414100001(2)
 MS2-M M431100001(1)
 MS2-M M434100001(2)
 MS3-H M451100001(1)
 MS3-H M454100001(2)
 Suburban ... M471100001(1)
 Suburban ... M474100001(2)

DODGE 1954-1959

1954

D50-1 34642001(1)
 42510001(3)

D50-1A 32152901(1)
 45105801(3)

D50-2 34642001(1)
 42510001(3)

D50-3 34642001(1)
 42510001(3)

D51-1 32160001(1)
 45110001(3)

D51-1A 34635801(1)
 42508001(3)

D51-2 45110001(1)
 32160001(1)

D52 37227001(1)
 48015001(3)

D53-2 38525001(1)
 47003001(3)

D53-3 38525001(1)
 47003001(3)

1955

D55 34740001(1)
 42518001(2)

D56 32192001(1)
 48016001(2)

D62 32227001(1)
 48016501(2)

D63 34972001(1)
 42608001(2)

GENERAL INFORMATION

<p>1956</p> <p>D62 32227001(1) 48016501(2)</p> <p>D63 34972001(1) 42608001(2)</p> <p>1957</p> <p>D72-1 32255001(1) D72-2 32255001(1) D66-1 35172001(1) 42620001(2)</p> <p>D67-1 37240001(1) 45540001(2)</p> <p>D67-2 37240001(1) 45540001(2)</p> <p>D70 38001001(1) D71 38535001(1)</p> <p>1958</p> <p>LD1 LD1-1001(1) LD1L-1001(2) LD1N-1001(3)</p> <p>LD2 LD2-1001(1) LD2L-1001(2) LD2N-1001(3)</p> <p>LD3 LD3-1001(1) LD3L-1001(2) LD3N-1001(3)</p> <p>LD2-S LD2-1001(1) LD3-S LD3-1001(1)</p> <p>1959</p> <p>Coronet 6 ... M30()100001</p>	<p>Coronet V8 .. M31()100001 Royal V8 .. M33()100001 Custom Royal V8... M35()100001 Suburban V8.. M37()100001 Custom Suburban V8 M37()100001</p> <p><u>IMPERIAL - SEE CHRYSLER</u></p> <p><u>PLYMOUTH 1954-1959</u></p> <p>1954</p> <p>P25 13506001(1) 25163001(2) 20658001(3) 25590001(3)</p> <p>1955</p> <p>P26 13835001(1) 20745001(3) 25180001(2)</p> <p>P27..... 15663001(1) 22182001(3) 26524001(2)</p> <p>1956</p> <p>P28 14120001(1) 20820001(3) 25202001(2)</p> <p>P29 15873001(1) 22247001(3) 26552001(2)</p>	<p>Fury 15873001(1) 22247001(2) 26552001(3)</p> <p>1957</p> <p>P30 14280001(1) 20860001(3) 25215001(2)</p> <p>P31 16083001(1) 22330001(3) 26595001(2)</p> <p>1958</p> <p>Plaza 6 LP1-1001 Savoy 6 LP1-1001 Belvedere 6 LP1-1001 Plaza V8 LP2-1001 Savoy V8 LP2-1001 Belvedere V8 LP2-1001 Fury V8 LP2-1001</p> <p>1959</p> <p>Savoy 6..... M13()100001 Belvedere 6.. M15()100001 Savoy V8... M23()100001 Belvedere V8 M25()100001 Fury V8 M26()100001 Sport Fury V8 . M29()100001 Suburban 6... M17()100001 Suburban V8.. M27()100001</p>
--	---	---

AUTOMOBILE FIRST SERIAL NUMBERS 1960-65

1960 - 1965

LOCATION: On left front door pillar.

NOTE: The following is an example of a 1965 vehical First Serial Number, which is typical of all 1960-1965 numbers.

1st Diget
"Car Line"

2nd Diget
"Model Series Identification"

3rd Diget
"Model Year"

- 0 - 1960
- 1 - 1961
- 2 - 1962
- 3 - 1963
- 4 - 1964
- 5 - 1965

4th Diget
"Assembly Plant"

- 1 - Plymouth, Detroit
- 2 - Dodge, Detroit
- 3 - Jefferson Plant, Detroit
- 4 - Imperial, Detroit
- 5 - Los Angeles, California
- 6 - Newark, Delaware Plant or Delaware
- 7 - St Louis, Missouri

"SEQUENCE NUMBER"

Each plant consecutively numbers all vehicles beginning at 100 001 regardless of car, make and model, except 1964-65 Detroit Built Valiant and Dart models which begin with 500 001.

NOTE: "Superior" sometimes leaves the 4th diget blank by using the symbol of a parenthesis.

EXAMPLE: W35()-100001

Chrysler Product cars, 1960-1965 will contain on the vehicle registration plate one of the above numbers, 1 - 7, to stand for the corresponding assembly plant.

CHRYSLER & IMPERIAL 1960 - 1965

1960

- Windsor 810()-100001
- Windsor Sub 8503-100001
- Saratoga 820()-100001
- New Yorker ... 830()-100001
- New Yorker Sub .. 8703-100001
- Imperial Custom .. 9104-100001
- Imperial Crown .. 9204-100001
- Imperial LeBaron 9304-100001

1961

- Newport 8113-100001
- Newport Sub 8513-100001
- Windsor 8213-100001
- New Yorker 8313-100001
- New Yorker Sub .. 8713-100001
- "300"..... 8413-100001

- Imperial Custom . 9114-100001
- Imperial Crown .. 9214-100001
- Imperial LeBaron 9314-100001

1962

- Newport..... 8123-100001
- Newport Sub 8523-100001
- "300"..... 8423-100001
- New Yorker 8323-100001
- New Yorker Sub .. 8723-100001
- Imperial Custom . 9123-100001
- Imperial Crown .. 9223-100001
- Imperial LeBaron 9323-100001

1963

- NewPort 8133-100001
- Newport Sub..... 8533-100001
- 300 8233-100001
- 300J 8433-100001

- 300 Pace Setter .. 8033-000000
- New Yorker 8333-100001
- New Yorker Sub.. 8733-100001
- New Yorker Salon . 8833-000000
- Imperial Custom.. 9133-100001
- Imperial Crown... 9233-100001
- Imperial LeBaron 9333-100001

1964

- Newport 8143-100001
- Newport Sub 8543-100001
- 300 8243-100001
- 300K 8443-100001
- New Yorker 8343-100001
- New Yorker Sub.. 8743-100001
- New Yorker Salon 8843-100001

GENERAL INFORMATION

Imperial Custom . 9143-100001 Imperial Crown .. 9243-100001 Imperial LeBaron 9343-100001 1965 Newport..... C15()-100001	Newport Sub .. C55()-100001 300 C25()-100001 300L C45()-100001	New Yorker ... C35()-100001 New Yorker Sub C75()-100001 Imperial Crown .. Y253-100001 Imperial LeBaron Y353-100001
--	---	---

DART 1963-1965

NOTE: The below Dart 1964-1965 first serial numbers are from all assembly plants except Detroit. The 4th & 5th digets of Detroit first serial numbers are "2 - 5". The other first serial numbers remain the same.

Example of Detroit first serial numbers:
'64 Dart "170" 6 7142-500001

1963 Dart "170" ... 713()-100001 Dart Sub "170" 753()-100001 Dart "270" 773()-100001 Dart Sub "270" 773()-100001 Dart "GT" ... 743()-100001	"270" 6 774()-100001 Dart "GT" 6 .. 744()-100001 Dart "170" V8 L14()-100001 Dart Sub "170" V8 L54()-100001 Dart "270" V8 . L34()-100001 Dart Sub "270" V8 ... L74()-100001 Dart "GT" V8 . L44()-100001	Dart Sub 6 ... 255()-100001 Dart "270" 6... 235()-100001 Dart Sub "270" 6 275()-100001 Dart "GT" 6... 245()-100001 Dart V8 L15()-100001 Dart Sub V8 .. L55()-100001 Dart "270" V8 . L35()-100001 Dart Sub "270" V8.... L75()-100001 Dart "GT" V8 . L45()-100001
1964 Dart "170" 6 .. 714()-100001 Dart Sub "170" 6 ... 754()-100001 Dart "270" 6 .. 734()-100001 Dart Sub	1965 Dart 6 215()-100001	

DESOTO 1960 - 1961

1960 Fireflite V8 ... 7103-100001 Adventurer V8 .. 7203-100001
1961 V8 6113-100001

DODGE 1960 - 1965

1960 Matador V8 610()-100001 Suburban V8 .. 650()-100001 Polara V8 630()-100001 Suburban V8 ... 670()-100001 Seneca 6 410()-100001 Suburban 6 450()-100001 Pioneer 6 420()-100001 Suburban 6 460()-100001 Phoenix 6 430()-100001 Seneca V8 510()-100001 Suburban V8 ... 550()-100001 Pioneer V8 ... 520()-100001 Suburban V8 .. 560()-100001 Phoenix V8 530()-100001	Dart "330" Sub 6 462()-100001 Dart "440" 6 ... 432()-100001 Dart V8 512()-100001 Dart Sub V8 ... 552()-100001 Dart "330" V8.. 522()-100001 Dart "330" Sub V8 562()-100001 Dart "440" V8.. 532()-100001 Dart "440" Sub V8 572()-100001 Polara V8 5422-100001 Custom 880 ... 6123-169564	Dodge "440" 6.. 424()-100001 Polara 6 434()-100001 Dodge "330" V8 614()-100001 Dodge Sub "330" V8 654()-100001 Dodge "440" V8 624()-100001 Dodge Sub "440" V8 664()-100001 Polara V8 634()-100001 Polara "500" V8 644()-100001 "880" V8 5143-100001 Sub "880" V8 ... 5543-100001 Custom "880" V8 5243-100001 Custom Sub "880" 5643-100001
1961 Polara V8 5414-100001 Suburban V8 ... 5513-100001 Seneca 6 411()-100001 Suburban 6 451()-100001 Pioneer 6 421()-100001 Suburban 6 461()-100001 Phoenix 6 431()-100001 Seneca V8 ... 511()-100001 Suburban V8 ... 551()-100001 Pioneer V8 ... 521()-100001 Suburban V8 ... 561()-100001 Phoenix V8 ... 531()-100001	1963 Dodge "330" 6 . 413()-100001 Dodge Suburban "330" 6 453()-100001 Dodge "440" 6 423()-100001 Polara 6 433()-100001 Dodge "330" V8 613()-100001 Dodge Suburban "330" V8 ... 653()-100001 Dodge "440" V8 623()-100001 Polara V8 633()-100001 Polara "500" V8 643()-100001 Custom "880" V8 5133-100001 Custom Sub "880" V8 5133-100001	1965 Coronet 6 415()-100001 Coronet Sub 6 .. 455()-100001 Coronet "440" 6 435()-100001 Coronet "440" Sub 6 475()-100001 Coronet V8 ... W15()-100001 Coronet Sub V8 W55()-100001 Coronet "440" .. W35()-100001 V8 Coronet "440" Sub V8 W75()-100001 Coronet "550" W45()-100001 Polara V8 D15()-100001 Polara Sub V8.. D55()-100001 Polara "880" V8 D35()-100001 Polara "880" Sub V8 D75()-100001 Monaco V8 ... D45()-100001
1962 Dart 6 412()-100001 Dart Sub 6 452()-100001 Dart "330" 6 ... 422()-100001	1964 Dodge "330" 6.. 414()-100001 Dodge Sub "330" 6 454()-100001	

IMPERIAL - SEE CHRYSLER

LANCER 1961-1962

1961	"170"..... 7112-300001	"770"	712()-100001
	"770"	7322-500001
	Sub "170"	732()-100001
	7522-500001
	752()-100001
	Sub "770"	7722-500001
	772()-100001
1962	"170"	Lancer GT	7422-500001
	742()-100001

PLYMOUTH 1960 - 1965

1960	Savoy 6	210()-100001	Belvedere V8 ...	320()-100001	Savoy Sub V8 ..	354()-100001
	Belvedere 6	220()-100001	Fury V8	332()-100001	Belvedere	
	Savoy V8	312()-100001	Savoy Sub 6 ...	252()-100001	Sub V8	364()-100001
	Belvedere V8 ...	320()-100001	Belvedere Sub 6	262()-100001	Fury Sub V8 ...	374()-100001
	Fury V8	330()-100001	Savoy Sub V8...	352()-100001	1965	
	Savoy Sub 6 ...	250()-100001	Belvedere		Belvedere I 6 ...	315()-100001
	Belvedere Sub 6	260()-100001	Sub V8	362()-100001	Belvedere I 6	
	Savoy Sub V8 ..	350()-100001	Fury Sub V8 ...	372()-100001	S.W.	355()-100001
	Belvedere		1963		Belvedere II 6 ..	335()-100001
	Sub V8.....	360()-100001	Savoy 6	213()-100001	Belvedere II 6	
	Fury Sub V8 ...	370()-100001	Belvedere 6 ...	223()-100001	S.W.	375()-100001
1961			Fury 6	233()-100001	Belvedere I V8	R15()-100001
	Savoy 6	211()-100001	Savoy V8	313()-100001	Belvedere I V8	
	Belvedere 6	221()-100001	Belvedere V8 ..	323()-100001	S.W.	R55()-100001
	Fury 6	231()-100001	Fury V8	333()-100001	Belvedere II V8	R35()-100001
	Savoy V8	311()-100001	Fury Sport V8 .	343()-100001	Belvedere II V8	
	Belvedere V8 ..	321()-100001	Savoy Sub 6 ..	253()-100001	S.W.	R75()-100001
	Fury V8	331()-100001	Savoy Sub V8..	353()-100001	Satellite V8 ..	R45()-100001
	Savoy Sub 6 ...	251()-100001	Belvedere		Fury I 6	515()-100001
	Belvedere Sub 6	261()-100001	Sub V8	363()-100001	Fury I 6 S.W...	555()-100001
	Savoy Sub V8 ..	351()-100001	Fury Sub V8 ...	373()-100001	Fury II 6	525()-100001
	Belvedere		1964		Fury III 6	535()-100001
	Sub V8	361()-100001	Savoy 6	214()-100001	Fury I V8	P15()-100001
	Fury Sub V8 ..	371()-100001	Belvedere 6 ...	224()-100001	Fury I V8 S.W.	P55()-100001
1962			Fury 6	234()-100001	Fury II V8 ...	P25()-100001
	Savoy 6	212()-100001	Savoy V8	314()-100001	Fury II V8 S.W.	P65()-100001
	Belvedere 6 ...	222()-100001	Belvedere V8 ..	324()-100001	Fury III V8 ...	P35()-100001
	Fury 6	232()-100001	Fury V8	334()-100001	Fury III V8 S.W.	P75()-100001
	Savoy V8	312()-100001	Sport Fury V8..	344()-100001	Sport Fury V8 ..	P45()-100001
			Savoy Sub 6 ...	254()-100001		

VALIANT 1960-1965

NOTE: The below Valiant 1964-1965 is the first serial numbers from all assembly plants except

Detroit. The 4th & 5th digits of Detroit first serial numbers are "2-5". The other first serial numbers remain the same.

EXAMPLE: '64 Valiant V100 6.....1142-500001

VALIANT 1960 - 1965

1960	DeLuxe	110()-100001	Sub V100	132()-100001	Signet 200 6...	144()-100001
	Custom	130()-100001	1522-500001	V100 V8	V14()-100001
	DeLuxe Sub ...	150()-100001	Sub V200	152()-100001	V200 V8	V34()-100001
	Custom Sub ...	170()-100001	1722-500001	Sub V100 V8 ..	V54()-100001
1961			172()-100001	Sub V200 V8 ..	V74()-100001
	V100	1112-300001	Signet 200	1422-500001	Signet 200 V8 .	V44()-100001
	111()-100001	142()-100001	1965	
	V200	1312-300001	1963		V100 6	115()-100001
	131()-100001	V100	113()-100001	Sub V100 6 ...	155()-100001
	Sub V100	1512-300001	V200	133()-100001	V200 6	135()-100001
	151()-100001	Sub V100	153()-100001	Sub V200 6 ...	175()-100001
	Sub V200	1712-300001	Sub V200	173()-100001	Signet 6	145()-100001
	171()-100001	Signet 200	143()-100001	V100 V8	V15()-100001
1962			1964		Sub V100 V8...	V55()-100001
	V100	1122-500001	V100 6	114()-100001	V200 V8	V35()-100001
	112()-100001	V200 6	134()-100001	Sub V200 V8 ..	V75()-100001
	V200	1322-500001	Sub V100 6 ...	154()-100001	Signet V8	V45()-100001
			Sub V200 6 ...	174()-100001		

GENERAL INFORMATION

1949-53

CAR FIRST ENGINE NUMBERS

1954-59 SEE PAGE 10

LOCATION: 1949-50 All & 1951-54 Six on left front of cylinder block.

LOCATION: 1953-54 8 cyl. on pad between #2 & #3 cylinders

CHRYSLER & IMPERIAL			DE SOTO			DODGE			PLYMOUTH		
Year	Model		Year	Model		Year	Model		Year	Model	
1949	C45	C45-1001	1949	S13	S13-1001	1949	A11	D30-1001	1949	A11	P18-1001
	C46	C46-1001	1950	S14	S14-1001	1950	A11	D34-1001	1950	A11	P20-1001
	C47	C47-1001	1951	S15	S15-1001	1951	A11	D42-1001	1951	A11	P22-1001
1950	C48	C48-1001	1952	S15	See Note	1952	A11	See Note.	1952	A11	See Note
	C49	C49-1001	1952	S17	S17-1001	1953	D44	D44-1001	1953	A11	P24-1001
	C50	C50-1001	1953	S16	S16-1001		D46	D46-1001			
1951	Six	C51-1001					D47	D46-1001			
	V8	C51-8-1001					D48	D44-1001			
1952	Six	C52-1001									
	V8	C52-8-1001									
1953	Six	C53-1001									
	V8	C53-8-1001									

Note 1: Continued from previous year.

1949-53

1954-59 SEE PAGE 12

1960-65 - SEE PAGE 13

CAR FIRST SERIAL NUMBERS - Location: On left Fr. Door Pillar.

CHRYSLER & IMPERIAL

DE SOTO

DODGE CONT:

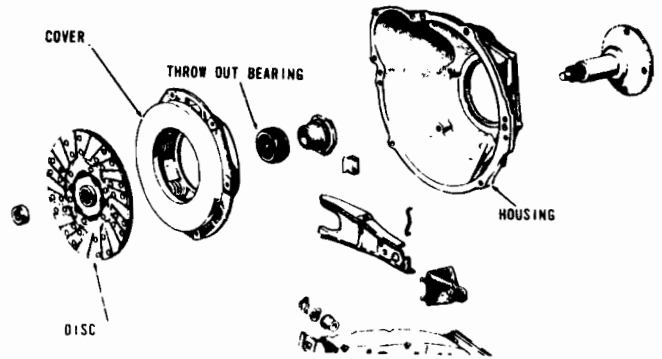
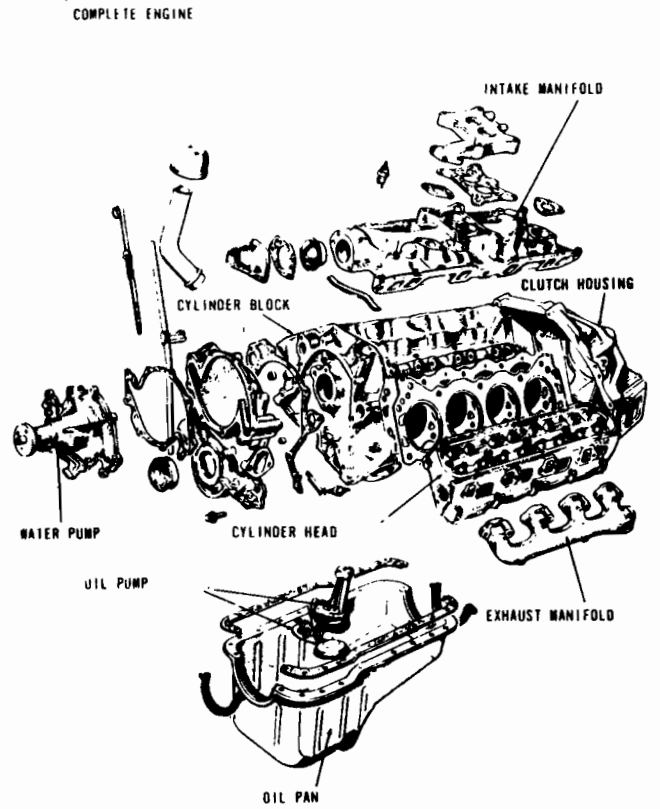
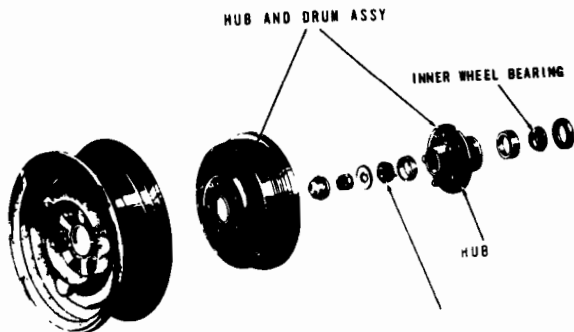
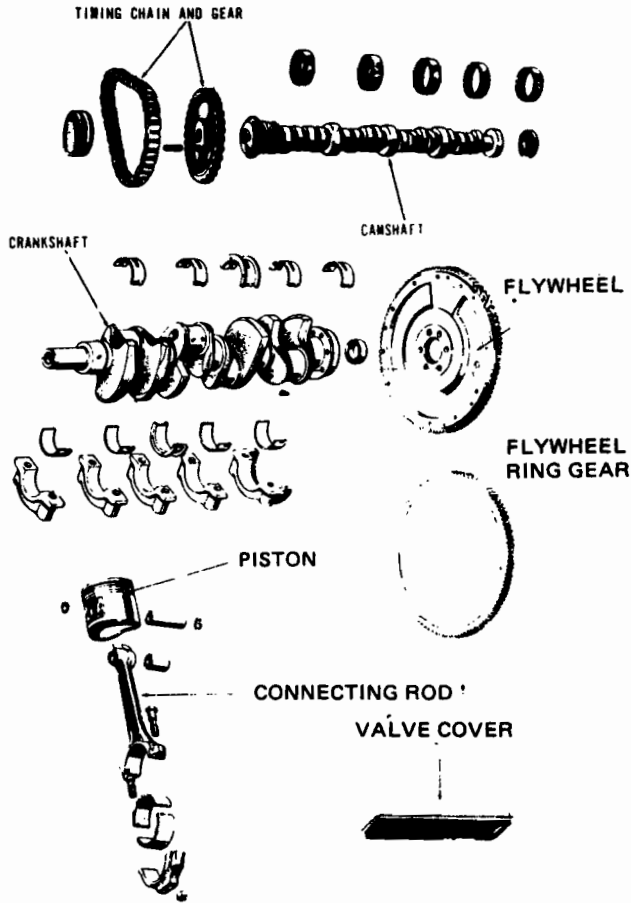
PLYMOUTH CONT.

Year	Model		Year	Model		Year	Model		Year	Model	
1949	C45S	70041001(1)	1949	S13S	6212001(1)	1952	D41	37175001(1)	1951	P22	18126001(1)
	C45S	65002001(2)		S13S	60002001(2)			48507601(2)			28011001(2)
	C45W	70725001(1)		S13C	50000101(1)			48009001(6)			24042001(7)
	C45W	67005001(2)		S13C	62004001(2)		D42	31867801(1)			28513001(6)
	C46K	6772001	1950	S14S	6233501(1)			45527501(2)			15460001(1)
	C46N	7094001		S14S	60005001(2)			45090601(6)		P23S	26040001(2)
	C46N(3)	7410001		S14C	50062001(1)	1953	D44	34500001(1)			22132001(7)
	C47	7813001		S14C	62011501(2)			41500001(2)			26512001(6)
1950	C48S	70058001(1)	1951	S15S	6269001(1)			42500001(6)		P23C	12635001(1)
	C48S	65004001(2)		S15S	60011001(2)		D46	32042001(1)			25112001(2)
	C48W	70794001(1)		S15C	50155001(1)			45536001(2)			20435001(7)
	C48W	67011001(2)		S15C	62024001(2)			45102001(6)			25531001(6)
	C49K	6774501	1952	S15S	6283601(1)		D47	37212001(1)	1952	P22	18192501(1)
	C49N	7119001		S15S	60013001(2)			48511001(2)			28015701(2)
	C49N(3)	7411501		S15C	50230101(1)			48013001(6)			24056701(7)
	C50	7813501		S15C	62032601(2)		D48	38500001(1)			28519101(6)
1951	C51W(4)	70081001(1)		S17	55000001(1)			46500001(2)			12906701(1)
	C51W(4)	65007001(2)		S17	64001001(2)			47001001(6)		P23C	26045701(2)
	C51W(5)	70891001(1)	1953	S16	55050001(1)						22159601(7)
	C51W(5)	67026001(2)		S16	64008001(2)						26518201(6)
	C52	7165001		S18	50266001(1)					P23C	12966701(1)
	C53	7814501		S18	62039001(2)						25125301(2)
	C54	7736501									20485001(7)
	C55	76500001(1)									25546101(6)
	C55	66500001(2)									13070001(1)
1952	C51W(4)	70094301(1)									25136001(2)
	C51W(4)	65008901(2)									20520001(7)
	C51W(5)	70952301(1)									25560001(6)
	C51W(5)	67033301(2)									
	C52	7199901									
	C53	7815101									
	C54	7753601	1950	D33	37060001(1)		P18	12120001(1)			
	C55	76512101(1)					DeLuxe	25075001(2)	1953	P24	13070001(1)
	C55	66501801(2)						20304001(7)			25136001(2)
1953	C56-1	76540001(1)						25500101(6)			20520001(7)
	C56-1	66506001(2)						15300001(1)			25560001(6)
	C56-2	7222001(1)						26025001(2)			25136001(2)
	C56-2	69001001(2)						22080001(7)			20520001(7)
	C58	7765001						26500101(6)			25560001(6)
	C59	7816001	1951	D41	37135001(1)		P18	12120001(1)			
	C60-1	70110001(1)					Special	25075001(2)			
	C60-1	65011001(2)					DeLuxe	20304001(7)			
	C60-2	71005001(1)						25500101(6)			
	C60-2	67040001(2)						18041001(1)			
								18041001(1)			
								28004001(2)			
								24012001(7)			
								28503501(6)			
								15359501(1)			
								26030501(2)			
								22097001(7)			
								26504001(6)			
								12384501(1)			
								25097501(2)			
								20367001(7)			
								25511001(6)			

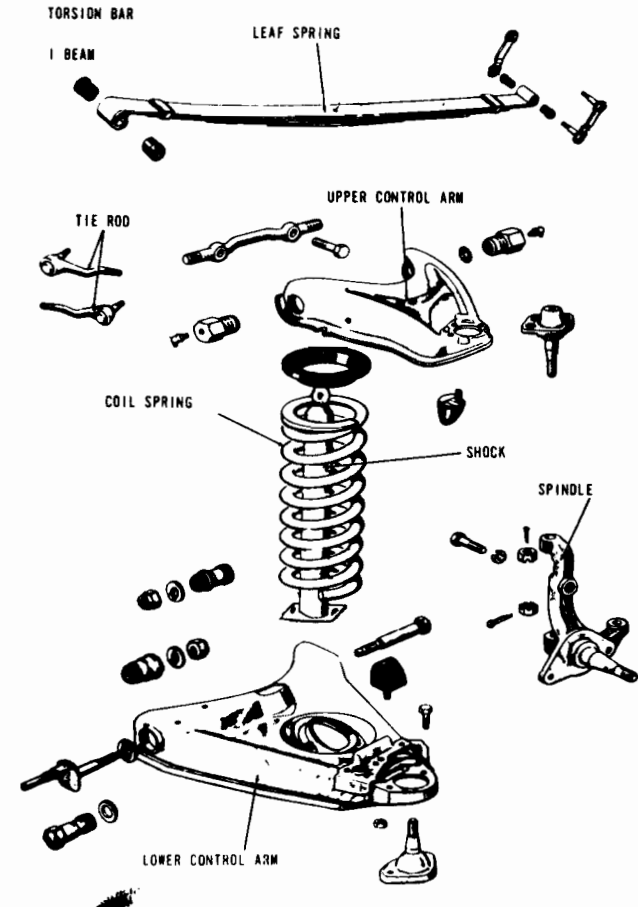
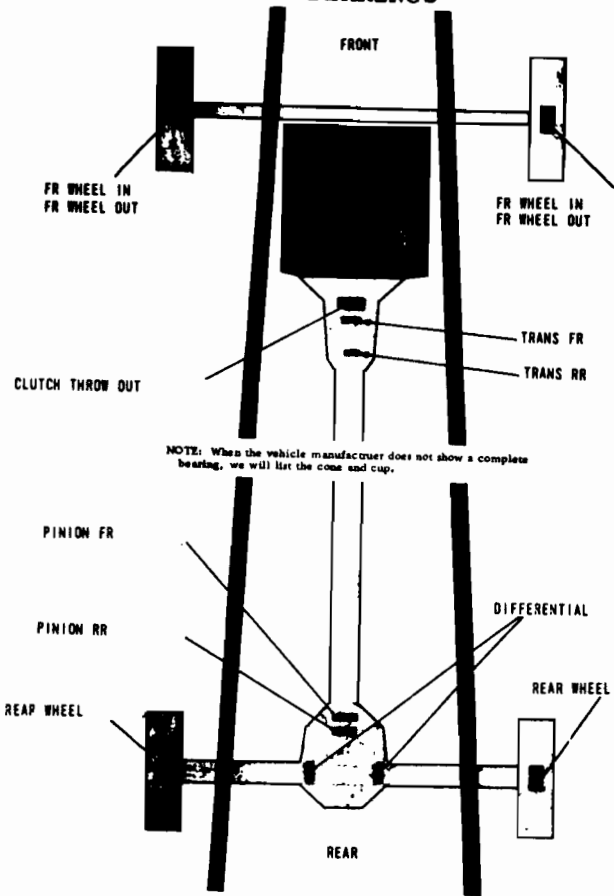
(1) Detroit, Mich (2) Los Angeles, CA (3) Town & Country (4) Windsor (5) Winsor DeLuxe
 (6) San Leandro, CA (7) Evansville, Ind.

CROSSOVER OF PART NAME TO PART PICTURE

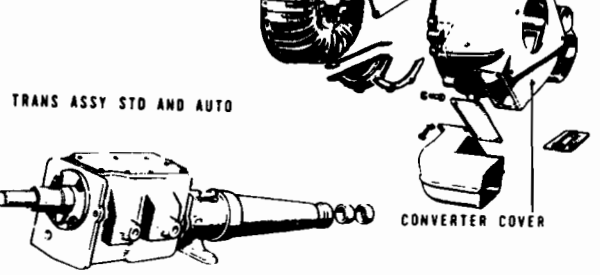
Following is a cross reference showing part name to the part picture. Not all parts are pictured. Pictured are those parts which might be confusing as to what part is actually being covered in this manual.



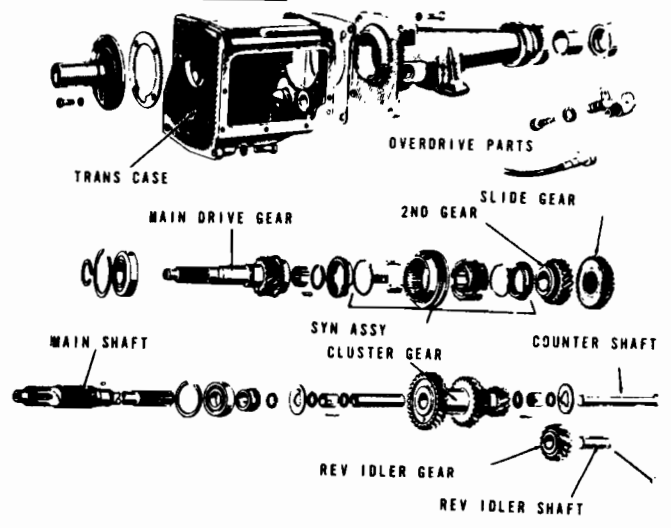
BEARINGS



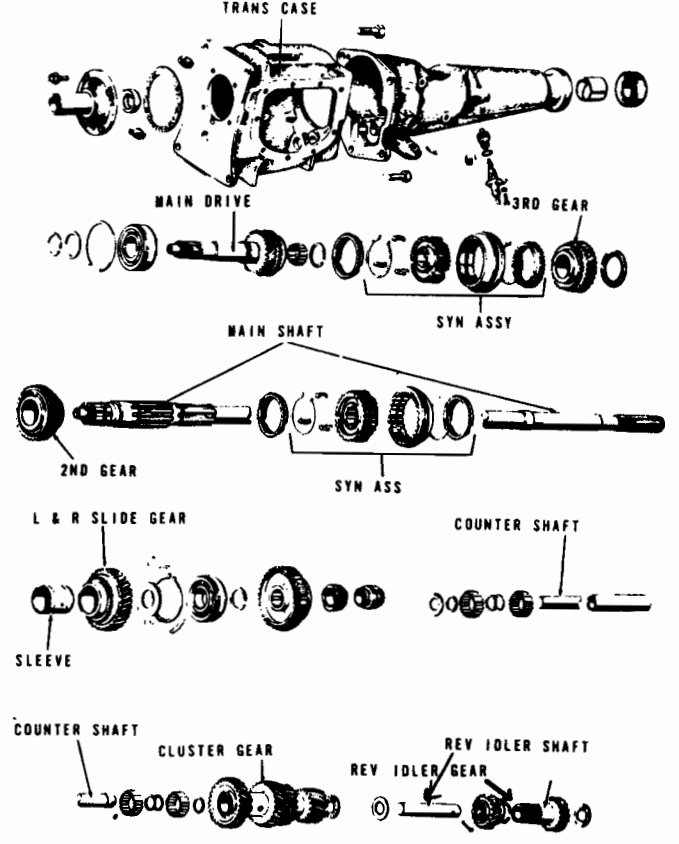
CONVERTER

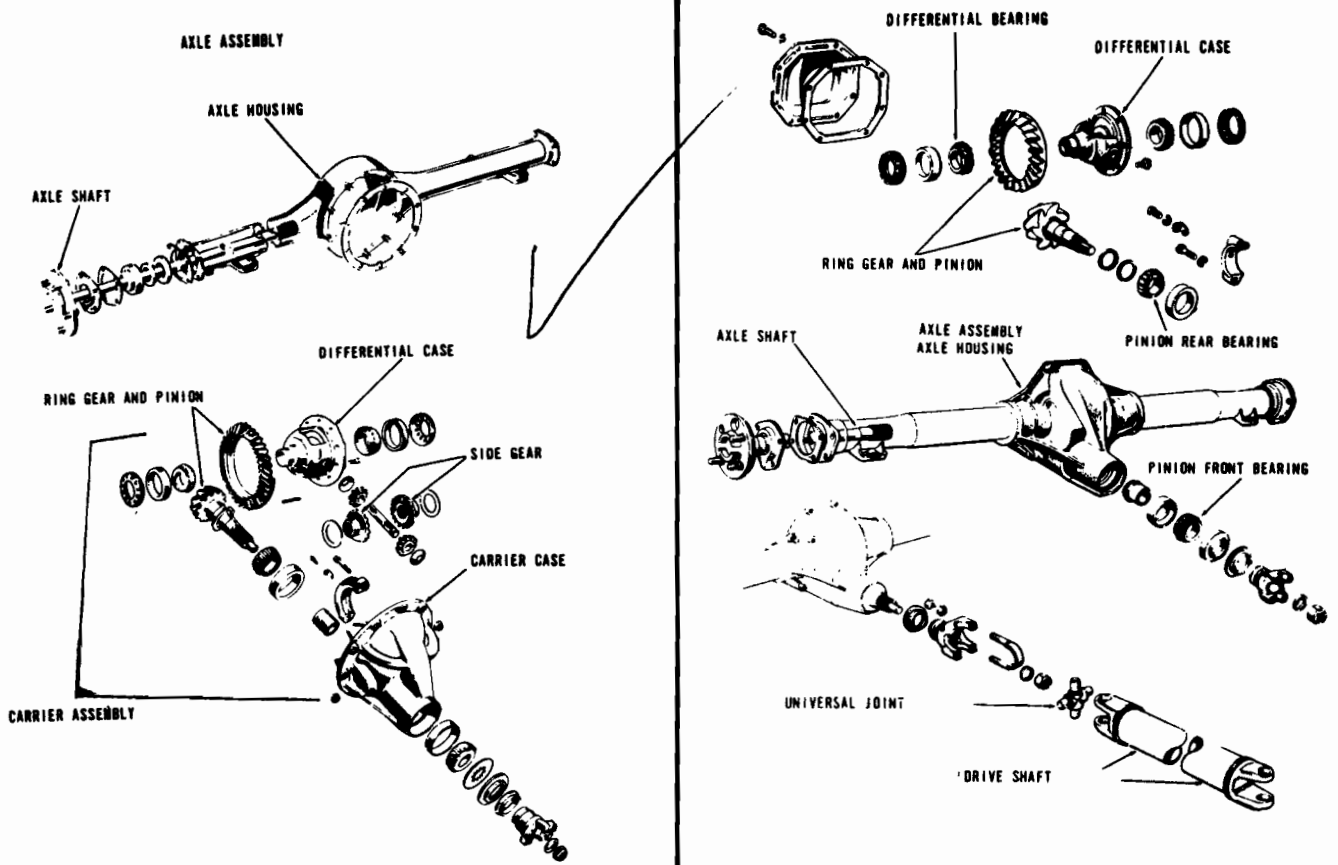


3SPD STD TRANS



4SPD STD TRANS





COWL ASSEMBLY ILLUSTRATION

