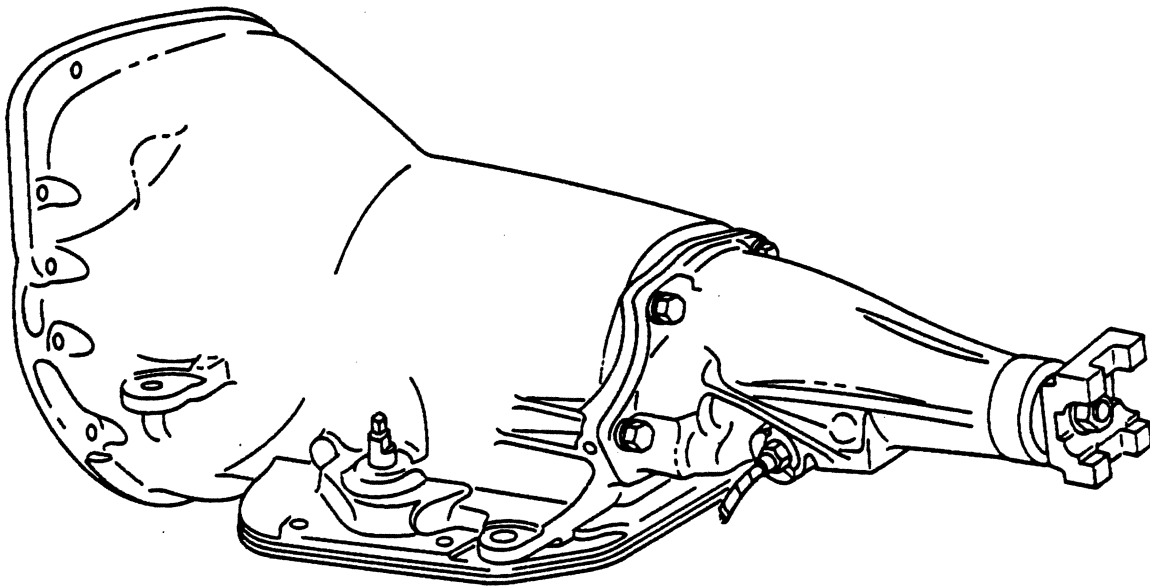


GROUP 21A - TRANSMISSION, AUTO.

GEARSHIFT CONTROLS, A727-A904-A999 AUTOMATIC TRANS MISSION, B-D-W-AD-AW-RD-CB-MB	Fig. 21A-1150
GEARSHIFT CONTROLS, MOTOR HOME - A727 M3,4,5,6	Fig. 21A-1200
GEARSHIFT CONTROLS, STEERING COLUMN SHIFT A727-A904-A999, B1,2,3-MB2-CB-MB3,4	Fig. 21A-900
GEARSHIFT CONTROLS, STEERING COLUMN SHIFT, WITH AND WITHOUT TILT STEERING COLUMN A727-A904-A999 B-CB-MB-D-W-RD-AD-AW1,2,3,4	Fig. 21A-1000
GEARSHIFT INDICATOR, WITH TILT STEERING COLUMN, A727, D1,2,3,4 - W1,2,3,4 - AD-AW1	Fig. 21A-1100
PINION CHART, SPEEDOMETER - A727 TRANS. - 1978-79	Fig. 21A-1400
PINION CHART, SPEEDOMETER - A727,A904,A999 TRANS. AND N.P.G. 208 TRANSFER CASE - 1980-81	Fig. 21A-1400
PINION CHART, SPEEDOMETER, WITH N.P.G. 203,205 TRA NSFER CASE, AW1-W1,2,3,4- 203 1978-79, 205 1980-81	Fig. 21A-1550
SPEEDOMETER CABLE & PINION CHART M3,4,5,6	Fig. 21A-1600
SPEEDOMETER CABLE, ADAPTER & PINION B-CB-MB-D-AD-RD (W1,2-AW1 w/208 TRANSFER CASE)	Fig. 21A-1300
SPEEDOMETER CABLE, ADAPTER & PINION AW1 - W1,2,3,4	Fig. 21A-1500
TRANSMISSION ASSY IDENTIFICATION A727-A904-A999	Fig. 21A-50
TRANSMISSION, 3 SPEED A727-A904-A999 AUTOMATIC CASE AND RELATED PARTS B-D-W-AD-AW-RD-CB-MB-M	Fig. 21A-100
TRANSMISSION, 3 SPEED A727 AUTOMATIC CLUTCH - FRONT AND REAR GEAR TRAIN, B-D-W-AD-AW-RD-CB-MB-M	Fig. 21A-200
TRANSMISSION, 3 SPEED A727-A904-A999 AUTOMATIC OIL PUMP AND REACTION SHAFT SUPPORT B-D-W-AD-AW-RD-CB-MB-M	Fig. 21A-350
TRANSMISSION, 3 SPEED A727-A904-A999 AUTOMATIC SERVOS, ACCUMULATOR PISTON AND SPRING B-D-W-AD-AW-RD-CB-MB-M	Fig. 21A-400
TRANSMISSION, 3 SPEED A727-A904-A999 AUTOMATIC GOVERNOR AND PARKING LOCK B-D-W-AD-AW-RD-CB-MB-M	Fig. 21A-500
TRANSMISSION, 3 SPEED A727-A904-A999 AUTOMATIC REVERSE AND KICKDOWN BAND AND LINKAGE B-D-W-AD-AW-RD-CB-MB-M	Fig. 21A-600
TRANSMISSION, 3 SPEED A727-A904-A999 AUTOMATIC VALVE BODY B-D-W-AD-AW-RD-CB-MB-M	Fig. 21A-700
TRANSMISSION, 3 SPEED A727 AUTOMATIC GEAR TRAIN AND OUTPUT SHAFT B-D-W-AD-AW-RD-CB-MB-M	Fig. 21A-800
TRANSMISSION, 3 SPEED A904-A999 AUTOMATIC CLUTCH - FRONT AND REAR GEAR TRAIN, B-D	Fig. 21A-300
TRANSMISSION, 3 SPEED A904-A999 AUTOMATIC GEAR TRAIN AND OUTPUT SHAFT B-D	Fig. 21A-850

TRANSMISSION ASSY IDENTIFICATION
A727-A904-A999



ITEM	PART NUMBER	QTY	MODEL	DESCRIPTION
------	-------------	-----	-------	-------------

TRANSMISSION ASSY IDENTIFICATION
A727-A904-A999

NOTE: The Seven Digit Transmission Assembly Part Number Is Stamped On The Left Side Of The Transmission Oil Pan Rail

4058 301	B-D-AD-CB		A727, w/LONG EXTENSION, B1,2,3-CB3 w/109"-127" W.B., D1 w/115"-131" W.B., D2,3 w/131" W.B., AD1 w/106" W.B., w/225 Eng. - 1978
4058 327	B-D-AD-CB		A727, w/LONG EXTENSION, B3 w/109"-127" W.B., CB3 w/109" W.B., D1 w/115"-131" W.B., D2 w/131" W.B., AD1 w/106" W.B., w/225 Eng. - 1979
4058 371	B-D-AD-CB		A727, w/LONG EXTENSION, B1,2,3-CB3 w/109"-127" W.B., D1 w/115"-131" W.B., D2,3 w/131" W.B., AD1 All W.B., w/225 Eng., w/LOCK-UP VALVE BODY - 1980
4058 384	B-D		A727, w/LONG EXTENSION, B1,2,3 w/109"-127" W.B., D1 w/115"-131" W.B., D2,3 w/131" W.B., w/225 Eng., w/LOCK-UP VALVE BODY - 1981
4058 311	B-D-AD		A727, w/LONG EXTENSION, B1 w/109"-127" W.B., D1 w/115"-131" W.B., AD1 w/106" W.B., w/225 Eng., WITH LOCK UP VALVE BODY - 1979
4039 530	D		A727, w/SHORT EXTENSION, D1 w/133"-149" W.B., D2 w/149"-165" W.B., D3 w/135"-149"-159"-165" W.B., w/225 Eng. - 1978
4058 323	D		1979
4058 302	B-CB-MB		A727, w/LONG EXTENSION, B1,2,3-CB-MB3,4 w/109"-127" W.B., w/318,360 Eng. - 1978
4058 328	B-CB-MB-M		A727, w/LONG EXTENSION, B2-3 w/109"-127" W.B., CB-MB3 w/109"-127" W.B., MB4 w/127" W.B., M3 w/125" W.B., w/318,360 Eng. - 1979
4058 372	B-CB-MB		1980
4058 395	B-CB-MB		A727, w/LONG EXTENSION, B1,2,3 w/109"-127" W.B., CB3 127" W.B., MB2,3 w/109"-127" W.B., MB4 w/127" W.B., w/318,360 Eng. - 1981
4058 303	B-CB-MB		A727, w/LONG EXTENSION, B1,2,3-CB-MB3,4 w/109"-127" W.B., w/318,360 Eng., w/E.R.S. - 1978
4058 314	B		A727, w/LONG EXTENSION, B1 w/109"-127" W.B., w/318 Eng., WITH LOCK UP VALVE BODY - 1979
4058 373	B		A727, w/LONG EXTENSION, B1,2,3 w/109"-127" W.B., w/318,360 Eng., w/LOCK-UP VALVE BODY - 1980
4058 392	B		1981
4039 536	D-AD-RD		A727, w/LONG EXTENSION, D1 w/115"-131" W.B., D2,3 w/131" W.B., RD2 w/131" W.B., AD1 w/106" W.B., w/318,360 Eng. - 1978
4058 332	D-AD-RD		1979
4058 372	D-RD		1980
4058 395	D-RD		1981
4058 316	D-AD		A727, w/LONG EXTENSION, D1 w/115"-131" W.B., AD1 w/106" W.B., w/318 Eng., WITH LOCK UP VALVE BODY - 1979
4058 374	D-AD		A727, w/LONG EXTENSION, D1 w/115"-131" W.B., D2 w/131" W.B., AD1 w/106" W.B., w/318,360 Eng., w/LOCK-UP VALVE BODY - 1980
4058 394	D-AD		A727, w/LONG EXTENSION, D1 w/115"-131" W.B., D2,3 w/131" W.B., AD1 w/106" W.B., w/318,360 Eng., w/LOCK-UP VALVE BODY - 1981
4028 823	D		A727, w/LONG EXTENSION, D1 w/115" W.B., w/360 High Performance Eng. - 1978

LIGHT A = All Sport Utility (Ramcharger).

B = All Compact Models.

D = Conventional Cab.

DUTY AD = 2 Wheel Drive Only (Ramcharger).

CB-MB = Compact Front Section Only.

W = Conventional Cab 4 Wheel Drive.

CODES: AW = 4 Wheel Drive Only (Ramcharger).

P = Forward Control Chassis.

M = Motor Home.

MEDIUM-HEAVY CODES: XNT = Low Cab Forward. D = Conventional Cab. S = School Bus. W = 4-Wheel Drive.

AR=Use as Required

= New Part Number

Printed in U.S.A.

June, 1982

1978-81 LIGHT DUTY TRUCK PARTS CATALOG

TRANSMISSION, AUTO.

ITEM	PART NUMBER	QTY	MODEL	DESCRIPTION
				TRANSMISSION ASSY IDENTIFICATION A727-A904-A999
	4130 705		D	A727, w/LONG EXTENSION, D1 w/115" W.B., w/360 High Performance Eng. - 1979
	4058 376		D	1980
	4039 531		D-CB-MB-RD	A727, w/SHORT EXTENSION, D1,2,3,4 w/133"-135"-149"-159"-165" W.B., CB-MB3,4 w/145"-163" W.B., RD2 w/149" W.B., w/318,360 Eng. - 1978
	4058 318		D-RD	A727, w/SHORT EXTENSION, D1 w/133"-149" W.B., D2 w/149"-165" W.B., D3,4 w/135"-149"-159"-165" W.B., RD2 w/149" W.B., w/318,360 Eng. - 1979
	4058 375		D-RD	1980
	4058 389		D-RD	1981
	4058 351		D	A727, w/SHORT EXTENSION, D1 w/133"-149" W.B., D2 w/149" W.B., w/318,360 Eng., w/LOCK-UP VALVE BODY -1980
	4058 388		D	A727, w/SHORT EXTENSION, D1 w/133"-149" W.B., D2 w/149"-165" W.B., D3,4 w/135"-149"-159"-165" W.B., w/318,360 Eng., w/LOCK-UP VALVE BODY - 1981
	4058 318		CB-MB-M	A727, w/SHORT EXTENSION, CB3 w/145" W.B., CB4 w/ 163" W.B., MB4 w/145"-163" W.B., M3,4 w/137" W.B., w/318,360 Eng. - 1979
	4058 375		CB-MB	1980
	4058 389		CB-MB	A727, w/SHORT EXTENSION, CB3,4 w/145"-163" W.B., MB4 w/145"-163" W.B., w/318,360 Eng. - 1981
	4058 375		M	A727, w/SHORT EXTENSION, M3,4 w/137"-159" W.B., w/360 Eng. - 1980
	4039 540		B-CB-MB	A727, w/LONG EXTENSION, B1,2,3-CB-MB3,4 w/109"-127" W.B., w/400,440 Eng. - 1978
	4058 329		MB	A727, w/LONG EXTENSION, MB3 w/109"-127" W.B., MB4 w/127" W.B., w/440 Eng. - 1979
	4039 539		D-AD	A727, w/LONG EXTENSION, D1 w/115"-131" W.B., D2,3 w/131" W.B., AD1 w/106" W.B., w/400,440 Eng.- 1978
	4039 532		D-CB-MB	A727, w/SHORT EXTENSION, D1 w/133"-149" W.B., D2 w/149"-165" W.B., D3,4 w/135"-149"-159"-165" W.B., CB3,4-MB4 w/145"-163" W.B., w/400,440 Eng.-1978
	4058 324		MB-M	A727, w/SHORT EXTENSION, MB4 w/145"-163" W.B., M4 w/137" W.B., w/440 Eng. - 1979
	4089 071		D	A727, w/LONG EXTENSION, D1 w/115"-131" W.B., D2 w/131" W.B., w/MMC DIESEL Eng. - 1978
	4058 331		D-B	A727, w/LONG EXTENSION, D1 w/115"-131" W.B., D2 w/131" W.B., B1,2,3 w/109"-127" W.B., w/MMC DIESEL Eng. - 1979
	4089 070		D	A727, w/SHORT EXTENSION, D1 w/133"-149" W.B., D2 w/149"-165" W.B., w/MMC DIESEL Eng. - 1978
	4058 325		D	1979
	4039 541		W-AW	A727, W1,2,3-AW1 w/225 Eng. - 1978
	4058 333		W	A727, W1,2,3 w/225 Eng. - 1979
	4058 355		W	A727, W1,2,3 w/225 Eng. - 1980
	4058 385		W	A727, W1,2,3 w/225 Eng. - 1981
	4039 542		W-AW	A727, W1,2,3,4-AW1 w/318,360 Eng. - 1978
	4058 334		W-AW	A727, W1,2,3,4-AW1 w/318,360 Eng. - 1979
	4058 358		W-AW	A727, W1,2,3,4-AW1 w/318,360 Eng. - 1980
	4058 397		W-AW	A727, W1,2,3,4-AW1 w/318,360 Eng. - 1981

LIGHT	A = All Sport Utility (Ramcharger).	B = All Compact Models.	D = Conventional Cab.
DUTY	AD = 2 Wheel Drive Only (Ramcharger).	CB-MB = Compact Front Section Only.	W = Conventional Cab 4 Wheel Drive.
CODES:	AW = 4 Wheel Drive Only (Ramcharger).	P = Forward Control Chassis.	M = Motor Home.

MEDIUM-HEAVY CODES: XNT = Low Cab Forward. D = Conventional Cab. S = School Bus. W = 4-Wheel Drive.

AR=Use as Required

=New Part Number

Printed in U.S.A.

June, 1982

ITEM	PART NUMBER	QTY	MODEL	DESCRIPTION
TRANSMISSION ASSY IDENTIFICATION				
A727-A904-A999				
	4058 356		W-AW	A727, W1,2-AW1 w/318,360 Eng., w/LOCK-UP VALVE BODY - 1980
	4058 396		W-AW	A727, W1,2,3,4-AW1 w/318,360 Eng., w/LOCK-UP VALVE BODY - 1981
	4039 543		W-AW	A727, W1,2,3,4-AW1 w/400,440 Eng. - 1978
	4089 072		W	A727, W1,2, w/MMC DIESEL Eng. - 1978
	4058 335		W	A727, W1,2, w/MMC DIESEL Eng. - 1979
	4058 303		M	A727, w/LONG EXTENSION, M3 w/125"-137" W.B., w/360 Eng., w/E.R.S. - 1978
	4039 539		M	A727, w/LONG EXTENSION, M3 w/125"-137" W.B., w/440 Eng. - 1978
	4039 533		M	A727, w/INTER EXTENSION, M3 w/137" W.B., M4 w/137"-159" W.B., w/360 Eng. - 1978
	4058 319		M	A727, w/INTER EXTENSION, M4 w/159" W.B., w/360 Eng. - 1979
	4039 534		M	A727, w/INTER EXTENSION, M3 w/137" W.B., M4 w/137"-159" W.B., M5 w/159"-178" W.B., M6 w/208" W.B. w/440 Eng. - 1978
	4058 326		M	A727, w/INTER EXTENSION, M4 w/159" W.B., M5 w/159"-178" W.B., M6 w/208" W.B. w/440 Eng. - 1979
	4058 353		M	A727, M3,4,5,6, All W.B., w/I.H.C. 446 Eng., Approx. 5-15-1979
	4058 399		M	A727, M,3,4, All W.B., w/I.H.C. 446 Eng. - 1980
	4058 336		M	A727, M,5,6, All W.B., w/I.H.C. 446 Eng. - 1980
	4058 383		B-D	A904, w/LONG EXTENSION, B1,2-D1 w/225 Eng.
	4058 398		B-D	A999, w/LONG EXTENSION, B1-D1 w/LOCK-UP, w/318 Eng.
CROSS REFERENCE				
	PROD.	SERVICE	REMAN.	
	ASSY.	ASSY.	ASSY.	
	4028823	4028823	4131012	
	4039530	4039530	4131018	
	4039531	4039531	4131022	
	4039532	4039532	4131028	
	4039533	4039533	4131027	
	4039534	4039534	4131032	
	4039536	4039536	4131023	
	4039539	4039539	4131029	
	4039540	4039540	4131030	
	4058301	4058301	4131021	
	4039541	4039541	4131019	
	4039542	4039542	4131026	
	4058302	4058302	4131025	
	4039543	4039543	4131031	
	4058301	4058301	4131021	
	4058303	4058303	4131025	
	4058311	4058311	4186074	
	4039542	4039542	4131026	
	4058314	4058314	4186073	
	4058316	4058316	4186080	
	4058318	4058318	4186082	
	4058319	4058319	4186076	
	4058323	4058323	4186081	
	4058324	4058324	4186085	
	4058325	4058325	4186087	
	4058326	4058326	4186079	
LIGHT	A = All Sport Utility (Ramcharger).		B = All Compact Models.	
DUTY	AD = 2 Wheel Drive Only (Ramcharger).		CB-MB = Compact Front Section Only.	
CODES:	AW = 4 Wheel Drive Only (Ramcharger).		P = Forward Control Chassis.	
			D = Conventional Cab.	
			W = Conventional Cab 4 Wheel Drive.	
			M = Motor Home.	
MEDIUM-HEAVY CODES: XNT = Low Cab Forward. D = Conventional Cab. S = School Bus. W = 4-Wheel Drive.				

1978-81 LIGHT DUTY TRUCK PARTS CATALOG

TRANSMISSION, AUTO.

ITEM	PART NUMBER	QTY	MODEL	DESCRIPTION
------	-------------	-----	-------	-------------

TRANSMISSION ASSY IDENTIFICATION A727-A904-A999

4058327	4058327	4186083
4058328	4058328	4186077
4058329	4058329	4186086
4058331	4058331	4186088
4058332	4058332	4186084
4058333	4058333	4186075
4058334	4058334	4186078
4058335	4058335	4186089
4058353	4058353	4186091
4089070	4089070	4131033
4089071	4089071	4131034
4089072	4089072	4131035
4130705	4130705	4186070
4058336	4058336	
4058351	4058351	
4058355	4058355	
4058356	4058356	
4058358	4058358	
4058371	4058371	
4058372	4058372	
4058373	4058373	
4058374	4058374	
4058375	4058375	
4058376	4058376	
4058383	4058383	
4058384	4058384	
4058385	4058385	
4058388	4058388	
4058389	4058389	
4058392	4058392	
4058394	4058394	
4058395	4058395	
4058396	4058396	
4058397	4058397	
4058398	4058398	
4058399	4058399	

LIGHT	A = All Sport Utility (Ramcharger).	B = All Compact Models.	D = Conventional Cab.
DUTY	AD = 2 Wheel Drive Only (Ramcharger).	CB-MB = Compact Front Section Only.	W = Conventional Cab 4 Wheel Drive.
CODES:	AW = 4 Wheel Drive Only (Ramcharger).	P = Forward Control Chassis.	M = Motor Home.

MEDIUM-HEAVY CODES: XNT = Low Cab Forward. D = Conventional Cab. S = School Bus. W = 4-Wheel Drive.

AR=Use as Required

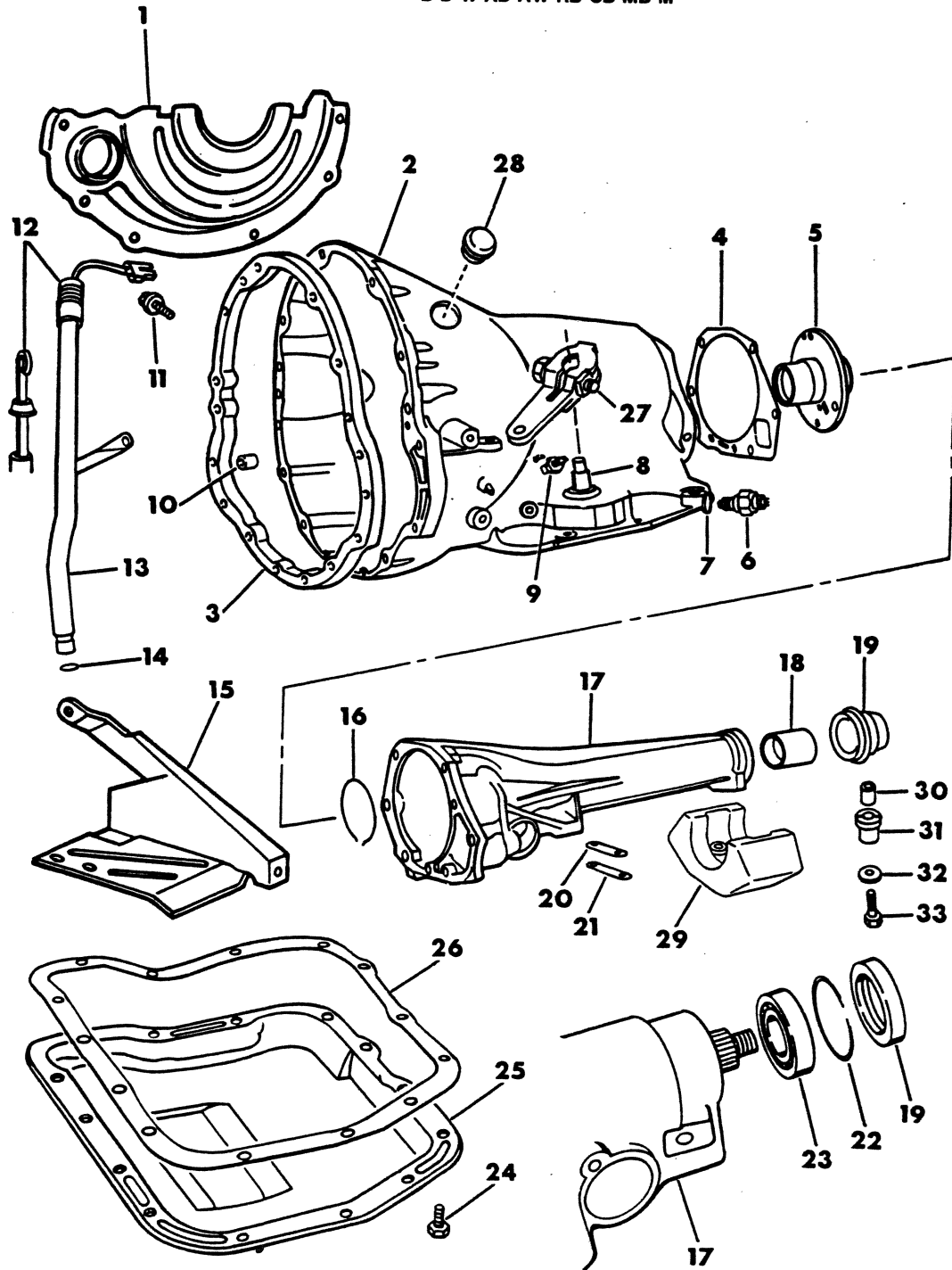
=New Part Number

Printed in U.S.A.

June, 1982

8351 100B

TRANSMISSION, 3 SPEED A727-A904-A999 AUTOMATIC
CASE AND RELATED PARTS
B-D-W-AD-AW-RD-CB-MB-M



ITEM	PART NUMBER	QTY	MODEL	DESCRIPTION
TRANSMISSION, 3 SPEED A727-A904-A999 AUTOMATIC CASE AND RELATED PARTS B-D-W-AD-AW-RD-CB-MB-M				
	4186 864	1		GASKET AND SEAL PACKAGE - A727, w/Long Extension, Complete Consists Of: 1 - 4057013 Gasket & Seal Pkg., Valve Body 1 - 4057014 Gasket & Seal Pkg., Frt. Pump 1 - 4106557 Gasket & Seal Pkg., Governor 1 - 4106590 Gasket & Seal Pkg., Clutch 1 - 2801568 Washer, O/P Shaft Thrust
	4186 865	1		GASKET AND SEAL PACKAGE - A727, w/Short Extension, Complete Consists Of: 1 - 4057013 Gasket & Seal Pkg., Valve Body 1 - 4057014 Gasket & Seal Pkg., Frt. Pump 1 - 4057016 Gasket & Seal Pkg., Governor 1 - 4106590 Gasket & Seal Pkg., Clutch 1 - 2801568 Washer, O/P Shaft Thrust
	4186 862	1	B-D	GASKET AND SEAL PACKAGE - A904,A999 Complete
1	3878 973	1		COVER, Case Dust Shield, w/225 Eng., A727
	4130 503	1		w/318,360 Eng., A727
	3515 920	1		w/400,440 Eng., A727
	4116 409	1	M	w/I.H.C. 446 Eng., A727
	4039 590	1	D-W	w/MMC DIESEL Eng., A727
	1949 767	1	B-D	w/225 Eng., A904 - 1981
	4130 502	1	B-D	w/318 Eng., A999 - 1981
2	3736 630	1		CASE, w/225 Eng., A727 - 1978
	4130 378	1		w/225 Eng., A727 - 1979-80-81
	3893 767	1		w/318,360 Eng., A727 - 1978
	4130 379	1		w/318,360 Eng., A727 - 1979-80-81
	4086 384	1	B-D-CB-MB-AD	w/400,440 Eng., A727 - 1978
	4086 384	1	MB-M	w/440 Eng., A727 - 1979-80
	4058 527	1	D-W-AW	w/400,440 and MMC DIESEL Eng., A727 - 1978
	4058 527	1	D-W	w/MMC DIESEL Eng., A727 - 1979
	3743 120	1	M	w/I.H.C. 446 Eng., A727
	4202 047	1	B-D	w/225 Eng., A904 - 1981
	4130 977	1	B-D	w/318 Eng., A999 - 1981
	3681 601	1	All	MAGNET, Case Chip Collector
	118 749	2	All	CONNECTOR, Oil Cooler Tube Trans. End
	137 398	2	All	NUT, Cooler Tube, Inverted Flair 5/16"
	6027 865	AR	B-D	SCREW, Case to Cyl. Block, w/A904 Trans., 3/8-16 x 1-3/8
3	4116 406	1	M	ADAPTER, Trans. Case to Eng., w/I.H.C. 446 Eng.
	6031 744	6	M	SCREW, Adapter to Cyl. Blk. 1/2-13 x 2" w/6 Point Head, w/I.H.C. 446 Eng.
	6031 744	4	M	Adapter to Case, 5/16-18 x 1-1/4", w/I.H.C. 446 Eng.
4	2466 954	1	All	GASKET, Extension or Adapter
5	2466 882	1	All	SUPPORT, Output Shaft, A727
	2466 881	1	B-D-AD	w/A904,A999
	179 818	4	All	SCREW, Support
6	4057 750	1	All	SWITCH w/WA., Trans. Neutral Starter and B/U Light, w/3 Prongs
	4266 085	1		SHIELD, Neutral Starter and B/U Light Switch, w/225 Eng.
7	2408 143	1	All	WASHER, B/U Light Switch
8	3878 447	1	All	SEAL, Manual Valve Shaft 1-1/4" O.D.

LIGHT A = All Sport Utility (Ramcharger).

B = All Compact Models.

D = Conventional Cab.

DUTY AD = 2 Wheel Drive Only (Ramcharger).

CB-MB = Compact Front Section Only.

W = Conventional Cab 4 Wheel Drive.

CODES: AW = 4 Wheel Drive Only (Ramcharger).

P = Forward Control Chassis.

M = Motor Home.

MEDIUM-HEAVY CODES: XNT = Low Cab Forward. D = Conventional Cab. S = School Bus. W = 4-Wheel Drive.

AR = Use as Required

= New Part Number

Printed in U.S.A.

June, 1982

1978-81 LIGHT DUTY TRUCK PARTS CATALOG

TRANSMISSION, AUTO.

ITEM	PART NUMBER	QTY	MODEL	DESCRIPTION
TRANSMISSION, 3 SPEED A727-A904-A999 AUTOMATIC CASE AND RELATED PARTS B-D-W-AD-AW-RD-CB-MB-M				
9	2400 389	1	All	SCREW, Kickdown Band Adjusting
10	6031 750	2	M	DOWEL, Trans. to Adapter, w/I.H.C. 446 Eng.
11	6023 092	AR		SCREW w/WA., Case Cover 1/4-20 x 1/2"
	180 077	AR	M	w/I.H.C. 446 Eng. 5/16-18 x 3/4"
12	2466 302	1	D-W-AD-AW-RD	INDICATOR, Trans. Oil Level, A727
	2466 302	1	D	w/A904,A999 Trans., Up To 1-19-1981
	4202 951	1	D	w/A904,A999 Trans., After 1-19-1981
	4086 396	1	B-CB-MB	Up To 10-2-1978, A727
	4117 465	1	B-CB-MB	From 10-2-1978, A727
	4202 952	1	B-CB-MB	After 12-8-1980, A727
	4202 952	1	B	w/A904,A999 - 1981
	4213 532	1	B-CB-MB	w/318,360 Eng., w/Electronic Monitor, A727-A999 - 1981
	4030 648	1	M	Electronic, 21" Lgh., A727
13	3497 935	1	D-W-AD-AW	TUBE, Oil Pan Oil Filler, w/225 Eng., A727
	4213 533	1	D	w/225 Eng., A904 - 1981
	4036 388	1	B-CB	w/225 Eng., Up To 10-2-1978, A727
	4086 715	1	B-CB	w/225 Eng., After 10-2-1978, A727
	4164 207	1	B-CB	w/225 Eng., A727 - 1980-81
	4058 562	1	B	w/225 Eng., w/Electronic Monitor, A727 - 1981
	4202 677	1	B	w/225 Eng., w/Electronic Monitor, A904 - 1981
	3894 589	1	D-W-AD-AW-RD	w/318,360 Eng., A727
	4213 534	1	D	w/318 Eng., A999 - 1981
	4036 389	1	B-CB-MB	w/318,360 Eng., Up To 10-2-1978, A727
	4086 716	1	B-CB-MB	w/318,360 Eng., After 10-2-1978, A727
	4164 208	1	B-CB-MB	w/318,360 Eng., A727 - 1980-81
	4028 308	1	B-CB-MB	w/318,360 Eng., w/Electronic Monitor, A727 - 1981
	4213 526	1	B	w/318 Eng., w/Electronic Monitor, A999 - 1981
	4164 210	1	B	w/225,318 Eng. w/o Electronic Monitor, A904,A999
	3497 937	1	D-W	w/MMC DIESEL Eng., A727
	3497 937	1	D-W-AD-AW	w/400,440 Eng., A727
	4089 606	1	B-CB-MB	w/400,440 Eng., Up To 10-2-1978, A727
	4086 716	1	B-CB-MB	w/440 Eng., After 10-2-1978, A727
	2960 471	1	M	w/360 Eng., A727
	2960 808	1	M	w/440 Eng., A727
	4116 403	1	M	w/I.H.C. 446 Eng., A727
	4088 199	1	B-CB-MB	SUPPORT, Tube, w/318,360 Eng., Up To 10-2-1978 (Not Shown)
	4086 717	1	B-CB-MB	w/225,318,360,440 Eng., After 10-2-1978
	4167 541	1	B-CB-MB	All Engines, A727-A904-A999 - 1980-81
14	1316 815	1	All	SEAL, Oil Filler Tube
15				STRUT, Trans. to Cylinder Block,
	1949 701	1	All	Left, w/225 Eng.
	4058 478	1		Left, w/318 Eng., A727
	4071 089	1		Left, w/Heat Shield, w/360 Eng., A727
	4071 089	1	B-D	w/318 Eng., A999 - 1981
	2204 702	1		Right, w/318,360 Eng., A727 - 1978-79-80
	4130 693	1	All	w/318,360 Eng., A727,A999 - 1981
	9416 171	2		SCREW w/WA., Strut to Case 3/8-16 x 1-1/4" w/225 Eng.
	6023 143	2		7/16-14 x 1-1/8" w/318,360 Eng.
16	2400 320	1		SNAP RING, Brg. Outer, w/Long Extension, A727

LIGHT	A = All Sport Utility (Ramcharger).	B = All Compact Models.	D = Conventional Cab.
DUTY	AD = 2 Wheel Drive Only (Ramcharger).	CB-MB = Compact Front Section Only.	W = Conventional Cab 4 Wheel Drive.
CODES:	AW = 4 Wheel Drive Only (Ramcharger).	P = Forward Control Chassis.	M = Motor Home.

MEDIUM-HEAVY CODES: XNT = Low Cab Forward. D = Conventional Cab. S = School Bus. W = 4-Wheel Drive.

AR=Use as Required

=New Part Number

Printed in U.S.A.

June, 1982

ITEM	PART NUMBER	QTY	MODEL	DESCRIPTION
TRANSMISSION, 3 SPEED A727-A904-A999 AUTOMATIC CASE AND RELATED PARTS B-D-W-AD-AW-RD-CB-MB-M				
	2400 185	1	B-D	w/A904,A999 Trans. - 1981
17	4028 190	1	D-AD	EXTENSION, Case, Long, w/225, MMC DIESEL and 360 High Perf. Eng., A727
	4028 190	1	B-CB-MB	Long, All Eng., A727 - 1978-79
	4028 190	1	B-CB	w/Lock Up Torque Converter, A727 - 1980-81
	4028 193	1	B-CB-MB	w/o Lock Up Torque Converter, A727 - 1980-81
	4028 193	1	D-AD-RD	Long, w/318,360,400,440 Eng., A727
	3780 230	1	B-D	Long, w/A904,A999 - 1981
	3515 246	1	D-CB-MB-RD	Short, All Eng., A727
	4028 190	1	M	Long, M3, w/360 Eng., A727
	3515 246	1	M	Short, M3,4, w/360 Eng., A727
	4028 193	1	M	Long, M3, w/440 Eng., A727
	3496 595	1	M	Inner, M3,4,5,6, w/318,360,440 Eng., A727
	3496 595	1	M	Inner, M3,4, w/I.H.C. 446 Eng., A727
	4130 830	1	M	M5,6, w/I.H.C. 446 Eng., A727
	4130 675	1	W-AW	ADAPTER, Trans. to Transfer Case, W1,2,3,4-AW1
	6030 849	6	W-AW	SCREW, Adapter to Trans. Case
	6027 150	6		SCREW w/WA., Ext. 3/8-16 x 1-1/8"
	6031 229	2	B-D	STUD, w/A904,A999, 3/8-16 x 1-1/8 x 3/4
	6029 531	6		w/318 Eng.
18	2801 724	1		BUSHING, Ext., w/Long Extension, A727
	2801 726	1	B-D	w/Long Extension, A904,A999
19	3515 383	1		OIL SEAL, w/Long Extension, A727
	2205 080	1		w/Short Extension, A727
	3515 384	1	B-D	w/Long Extension, A904,A999
20	2801 398	1		GASKET, Cover, w/Long Extension
21	2466 957	1		COVER, w/Long Extension
22	1736 432	1		SNAP RING, Ext. Brg., w/Short Extension
	1736 432	1	M	M3,4,5,6, w/I.H.C. 446 Eng.
23	1672 194	1		BEARING, Ext., w/Short Extension
	1672 194	1	M	w/Inner Extension M3,4,5,6
		1		w/Long Ext. (Refer to illus. # 500)
24	6023 355	14	All	SCREW w/WA., 5/16-18 x 5/8"
25	4058 997	1	All	PAN, Trans. Oil, A727
	4202 005	1	B-D	w/A904,A999 Trans.
26	2464 324	1	All	GASKET, Oil Pan, A727
	2205 299	1	B-D	w/A904,A999 Trans.
27	2801 828	1		LEVER, Manual Control, Except M3,4,5,6 - 1978
	2513 936	1	M	Use w/M3,4,5,6 - 1978-79-80
	3743 891	1	B-CB-MB	1979
	2801 828	1	D-W-AD-AW-RD	1979
	2801 828	1	D	D100, w/360 High Performance Eng. - 1980
	3743 891	1		All Except M3,4,5,6, A727 - 1980-81
	4028 727	1	B-D	15/32" Hole At Rod End, A904,A999
	2899 370	1	All	LEVER, Throttle Control, Except MMC DIESEL Eng., A727
	3751 551	1	B-D	w/A904,A999 Trans.
28	1882 735	1	All	PLUG, Timing Hole
29	3681 464	1	D	WEIGHT, Trans. Damper w/MMC DIESEL Eng.
30	3681 189	2	D	SPACER, Trans. Damper Weight w/MMC DIESEL Eng.

LIGHT A = All Sport Utility (Ramcharger).

B = All Compact Models.

D = Conventional Cab.

DUTY AD = 2 Wheel Drive Only (Ramcharger).

CB-MB = Compact Front Section Only.

W = Conventional Cab 4 Wheel Drive.

CODES: AW = 4 Wheel Drive Only (Ramcharger).

P = Forward Control Chassis.

M = Motor Home.

MEDIUM-HEAVY CODES: XNT = Low Cab Forward. D = Conventional Cab. S = School Bus. W = 4-Wheel Drive.

AR=Use as Required

= New Part Number

Printed in U.S.A.

June, 1982

1978-81 LIGHT DUTY TRUCK PARTS CATALOG

TRANSMISSION, AUTO.

ITEM	PART NUMBER	QTY	MODEL	DESCRIPTION
------	-------------	-----	-------	-------------

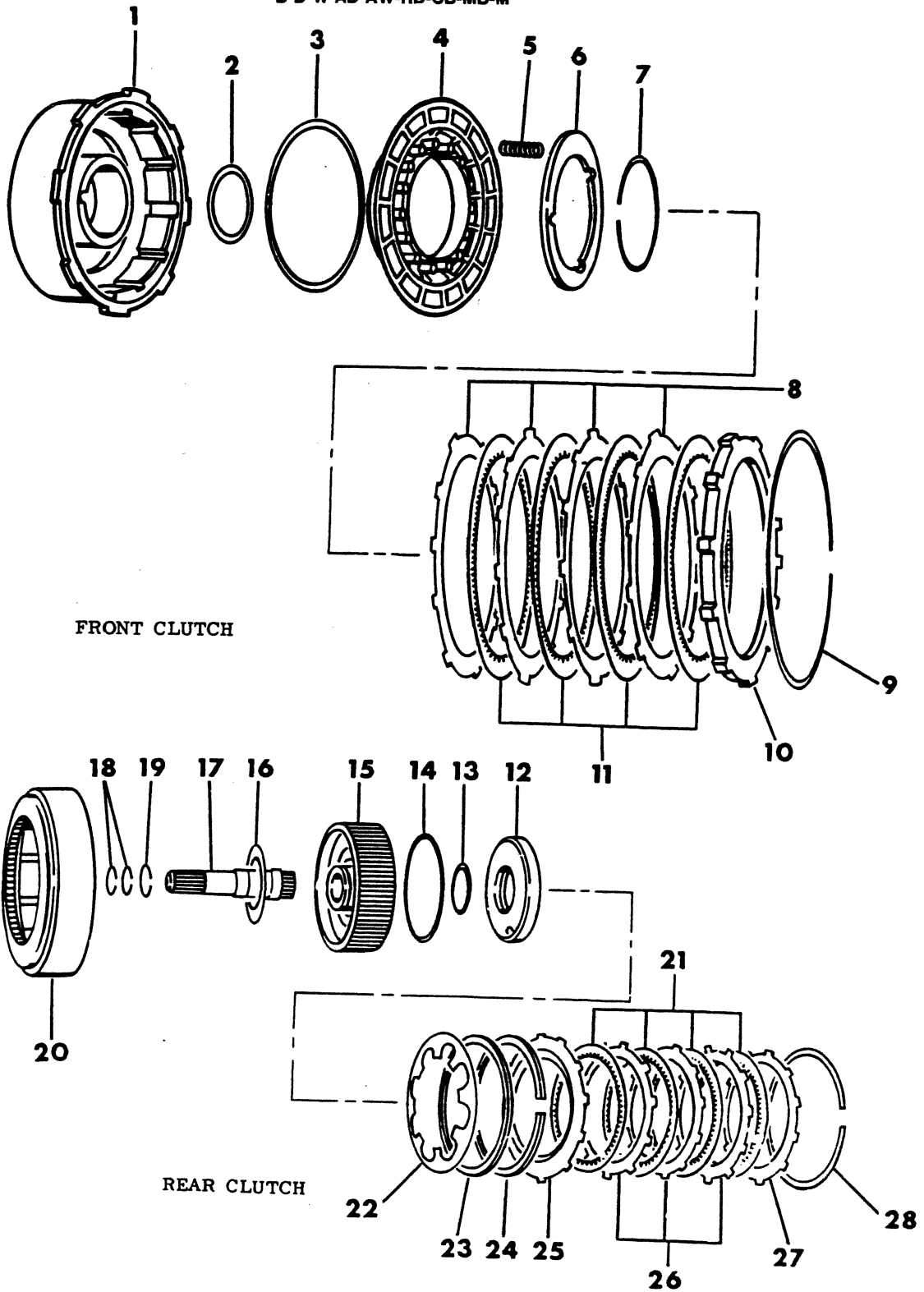
**TRANSMISSION, 3 SPEED A727-A904-A999 AUTOMATIC
 CASE AND RELATED PARTS
 B-D-W-AD-AW-RD-CB-MB-M**

31	3681 513	2	D	INSULATOR, Trans. Damper Weight w/MMC DIESEL Eng.
32	9418 924	2	D	WASHER, 5/16"
33	181 091	2	D	SCREW, 5/16-18 x 1-3/8"

LIGHT	A = All Sport Utility (Ramcharger).	B = All Compact Models.	D = Conventional Cab.
DUTY	AD = 2 Wheel Drive Only (Ramcharger).	CB-MB = Compact Front Section Only.	W = Conventional Cab 4 Wheel Drive.
CODES:	AW = 4 Wheel Drive Only (Ramcharger).	P = Forward Control Chassis.	M = Motor Home.
MEDIUM-HEAVY CODES: XNT = Low Cab Forward. D = Conventional Cab. S = School Bus. W = 4-Wheel Drive.			

AR=Use as Required # =New Part Number Printed in U.S.A. June, 1982

TRANSMISSION, 3 SPEED A727 AUTOMATIC
CLUTCH - FRONT AND REAR GEAR TRAIN,
B-D-W-AD-AW-RD-CB-MB-M



ITEM	PART NUMBER	QTY	MODEL	DESCRIPTION
TRANSMISSION, 3 SPEED A727 AUTOMATIC CLUTCH - FRONT AND REAR GEAR TRAIN, B-D-W-AD-AW-RD-CB-MB-M				
	4106 590	1		SEAL AND GASKET PKG.- A727, Front and Rear Clutch Repair Consists Of: 1 - 3410226 SEAL, Frt. Clutch Piston, Inner 1 - 3743237 SEAL, Frt. Clutch Piston, Outer 1 - 1942054 SEAL, Rear Clutch Piston, Inner 1 - 2124835 SEAL, Rear Clutch Piston, Outer 1 - 3681688 WASHER, O/P Shaft Thrust 1 - 4058946 PLATE, O/P Shaft Thrust
1				RETAINER, w/Bushing, Frt. Clutch, w/225 and MMC DIESEL Eng. w/318,360,400,440,446 Eng.
	4058 437	1		
	4058 648	1		
	4058 647	1	All	BUSHING, Frt. Clutch Retainer
2	3410 226	1	All	SEAL, Frt. Clutch Piston, Inner
3	3743 237	1	All	SEAL, Frt. Clutch Piston, Outer - 1978-79 1980-81
	4058 484	1	All	
4	2464 651	1	All	PISTON, Frt. Clutch
	147 483	1	All	BALL, 3/16"
5	2801 243	13		SPRING, Frt. Clutch Piston, w/225 and MMC DIESEL Eng. w/318,360,400,440,446 Eng.
	2801 243	9		
6	2801 949	1	All	RETAINER, Frt. Clutch Piston Spring
	147 483	1	All	BALL, 3/16" (Not Shown)
7	2124 824	1	All	SNAP RING, Frt. Clutch, Inner, .060" Thk., 3" I.D.
8	2124 826	3		PLATE, Frt. Clutch, w/225 and MMC DIESEL Eng. w/318,360,400,440,446 Eng.
	2124 826	4		
9	3410 570	1	All	SNAP RING, Frt. Clutch, .050" Thk., 7-8/64" O.D.
10	2801 961	1	All	PLATE, Frt. Clutch Pressure
11	2801 167	3		DISC, Frt. Clutch, w/225 and MMC DIESEL Eng. w/318,360,400,440,446 Eng.
	2801 167	4		
12	3743 624	1	All	PISTON, Rr. Clutch
	147 483	1	All	BALL, 3/16"
13	1942 054	1	All	SEAL, Rr. Clutch Piston, Inner
14	2124 835	1	All	SEAL, Rr. Clutch Piston, Outer
15	4028 299	1	All	RETAINER, Rr. Clutch Piston
	4058 443	1	All	RING, Piston Ret. Oil Seal Lock, 1-7/8" O.D.
16	2204 622	1	All	WASHER, Frt. Clutch Thrust, Rear
17	4058 665	1		SHAFT, Input, All Eng. w/o Lock Up Torque Converter w/225,318,360 Eng., w/Lock Up Torque Converter
	4058 035	1		
	3681 709	1	All	BUSHING
	147 488	1	All	BALL, 11/32"
18	2801 054	2	All	RING, Input Shaft Seal 1-3/16" O.D.
19	2124 872	1	All	SNAP RING, Rr. Clutch Piston Retainer, .060" Thk., 1-31/64" O.D.
20	3743 622	1	All	RETAINER, Rr. Clutch
	4058 443	1	All	SNAP RING, Rr. Clutch Piston Ret. Seal
21	2801 992	4	All	DISC, Rr. Clutch
22	3743 621	1	All	SPRING, Rr. Clutch Piston
23	3515 077	1	All	SPACER, Rr. Clutch Piston Spring, Plastic, 6-13/16" O.D.
24	2466 806	1	All	SPRING, Rr. Clutch Wave
25	2466 803	1	All	PLATE, Rr. Clutch Pressure, Frt.
26	2124 826	3	All	PLATE, Rr. Clutch

LIGHT A = All Sport Utility (Ramcharger).

B = All Compact Models.

D = Conventional Cab.

DUTY AD = 2 Wheel Drive Only (Ramcharger).

CB-MB = Compact Front Section Only.

W = Conventional Cab 4 Wheel Drive.

CODES: AW = 4 Wheel Drive Only (Ramcharger).

P = Forward Control Chassis.

M = Motor Home.

MEDIUM-HEAVY CODES: XNT = Low Cab Forward. D = Conventional Cab. S = School Bus. W = 4-Wheel Drive.

AR=Use as Required

= New Part Number

Printed in U.S.A.

June, 1982

1978-81 LIGHT DUTY TRUCK PARTS CATALOG

TRANSMISSION, AUTO.

ITEM	PART NUMBER	QTY	MODEL	DESCRIPTION
TRANSMISSION, 3 SPEED A727 AUTOMATIC CLUTCH - FRONT AND REAR GEAR TRAIN, B-D-W-AD-AW-RD-CB-MB-M				
27	2801 961	1	All	PLATE, Rr. Clutch Pressure, Rr.
28				SNAP RING, Rr. Clutch Retainer, 7" O.D.,
	1942 063	AR	All	.060" Thk.
	1942 064	AR	All	.074" Thk.
	1942 065	AR	All	.088" Thk.
	2486 811	AR	All	.106" Thk.

LIGHT A = All Sport Utility (Ramcharger). B = All Compact Models. D = Conventional Cab.
DUTY AD = 2 Wheel Drive Only (Ramcharger). CB-MB = Compact Front Section Only. W = Conventional Cab 4 Wheel Drive.
CODES: AW = 4 Wheel Drive Only (Ramcharger). P = Forward Control Chassis. M = Motor Home.

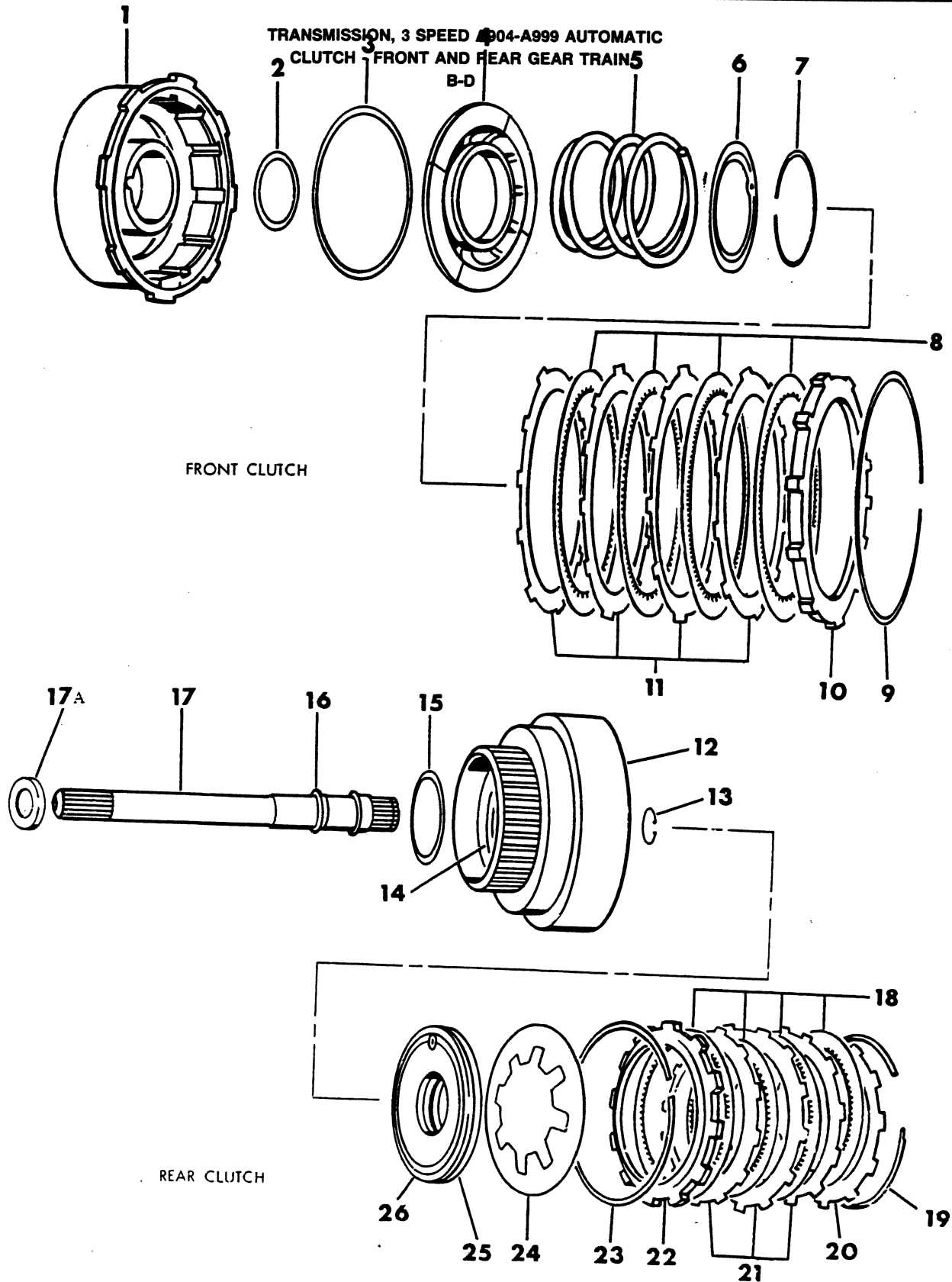
MEDIUM-HEAVY CODES: XNT = Low Cab Forward. D = Conventional Cab. S = School Bus. W = 4-Wheel Drive.

AR=Use as Required

= New Part Number

Printed in U.S.A.

June, 1982



ITEM	PART NUMBER	QTY	MODEL	DESCRIPTION
TRANSMISSION, 3 SPEED A904-A999 AUTOMATIC CLUTCH - FRONT AND REAR GEAR TRAIN, B-D				
	4186 058	1		SEAL AND WASHER PACKAGE, Front and Rear Clutch Consists Of: 1 - 3515176 SEAL, Frt. Clutch Piston, Inner 1 - 4058487 SEAL, Frt. Clutch Piston, Outer 1 - 2538510 SEAL, Rear Clutch Piston, Inner 1 - 2538695 SEAL, Rear Clutch Piston, Outer 1 - 4130077 Washer, Output Shaft Thrust 1 - 4130078 Washer, Output Shaft Thrust
1	3621 476	1		RETAINER & SEAL PKG., Frt. Clutch, w/225 Eng. A904
	3743 382	1		RETAINER, w/BUSHING, Front Clutch, w/318 Eng. A999
	2801 727	1	All	BUSHING, Frt. Clutch Retainer
2	3515 176	1	All	SEAL, Frt. Clutch Piston, Rubber, Inner
3	4058 487	1	All	SEAL, Frt. Clutch Piston, Outer
4	3743 090	1		PISTON, Frt. Clutch, w/225 Eng., A904
	3743 384	1		w/318 Eng., A999
	147 483	1	All	BALL, 3/16"
5	2801 844	1		SPRING, Frt. Clutch Piston, Orange w/225 Eng., A904
	3515 054	1		Yellow, w/318 Eng., A999
6	1942 399	1	All	RETAINER, Frt. Clutch Piston Spring
	147 483	1	All	BALL, Check Valve 3/16"
7	1942 400	1	All	SNAP RING, Frt. Clutch 2-7/16" O.D., .060" Thk., Inner
8	2205 203	4		DISC, Frt. Clutch, w/225 Eng., A904
	2205 203	5		w/318 Eng., A999
9	3410 571	1	All	SNAP RING, Frt. Clutch, Outer
10	2801 969	1	All	PLATE, Frt. Clutch Pressure
11	1942 403	4		PLATE, Frt. Clutch, w/225 Eng., A904
	1942 403	5		w/318 Eng., A999
12	4186 879	1	All	RETAINER, Rear Clutch
	147 483	1	All	BALL, Check Valve 3/16"
13	6022 859	1	All	SNAP RING, Input Shaft 57/64", .059" Thk.
14	2538 695	1	All	SEAL, Rr. Clutch Piston, Rubber, Outer
	4028 333	1	All	Rr. Clutch Retainer Ring 1-1/2" O.D., .009" Thk.
15	3410 572	2	All	WASHER, Frt. Clutch Thrust 5-7/8" O.D.
16	1401 221	1	All	RING, Input Shaft Seal, Front
	1401 221	1	All	Rear
17	4130 194	1	All	SHAFT, Input 26T,23 Teeth
17A	4058 982	1	All	PLATE, Input Shaft Thrust
18	1942 403	3	All	PLATE, Rear Clutch
19			All	SNAP RING, Rr. Clutch Retainer 5-11/32" O.D.
	4130 761	AR	All	.060" Thk.
	4130 762	AR	All	.076" Thk.
	4130 763	AR	All	.098" Thk.
20	2801 969	1	All	PLATE, Rr. Clutch Pressure, Rear
21	3780 285	4	All	DISC, Rr. Clutch
22	2466 281	1	All	PLATE, Rr. Clutch Pressure, Front
23	2466 283	1	All	SPRING, Rr. Clutch Wave
24	1942 414	1	All	SPRING, Rr. Clutch Piston
25	2538 510	1	All	SEAL, Rr. Clutch Piston, Rubber, Inner
26	3515 716	1	All	PISTON, Rr. Clutch

LIGHT A = All Sport Utility (Ramcharger). B = All Compact Models. D = Conventional Cab.
DUTY AD = 2 Wheel Drive Only (Ramcharger). CB-MB = Compact Front Section Only. W = Conventional Cab 4 Wheel Drive.
CODES: AW = 4 Wheel Drive Only (Ramcharger). P = Forward Control Chassis. M = Motor Home.

MEDIUM-HEAVY CODES: XNT = Low Cab Forward. D = Conventional Cab. S = School Bus. W = 4-Wheel Drive.

AR=Use as Required

=New Part Number

Printed in U.S.A.

June, 1982

1978-81 LIGHT DUTY TRUCK PARTS CATALOG

TRANSMISSION, AUTO.

ITEM	PART NUMBER	QTY	MODEL	DESCRIPTION
------	-------------	-----	-------	-------------

**TRANSMISSION, 3 SPEED A904-A999 AUTOMATIC
 CLUTCH - FRONT AND REAR GEAR TRAIN,
 B-D**

147 483	1	All	BALL, Check 3/16"
---------	---	-----	-------------------

LIGHT	A = All Sport Utility (Ramcharger).	B = All Compact Models.	D = Conventional Cab.
DUTY	AD = 2 Wheel Drive Only (Ramcharger).	CB-MB = Compact Front Section Only.	W = Conventional Cab 4 Wheel Drive.
CODES:	AW = 4 Wheel Drive Only (Ramcharger).	P = Forward Control Chassis.	M = Motor Home.

MEDIUM-HEAVY CODES: XNT = Low Cab Forward. D = Conventional Cab. S = School Bus. W = 4-Wheel Drive.

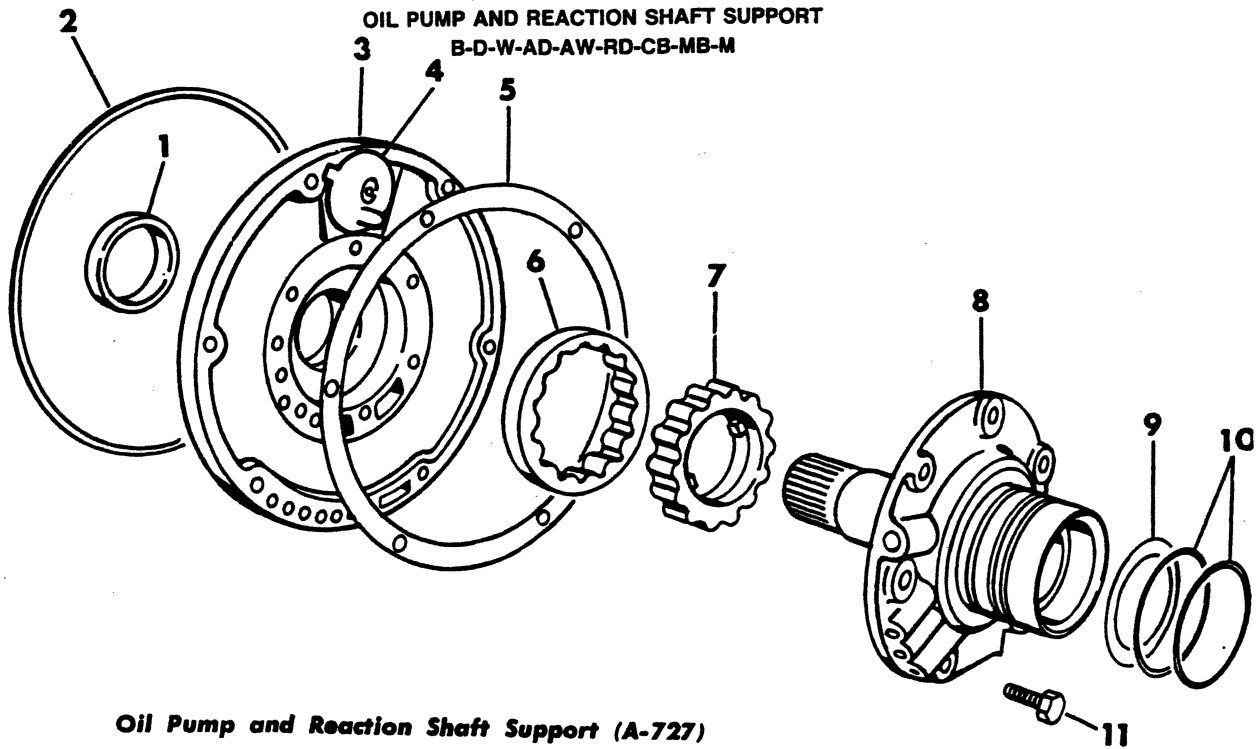
AR=Use as Required

=New Part Number

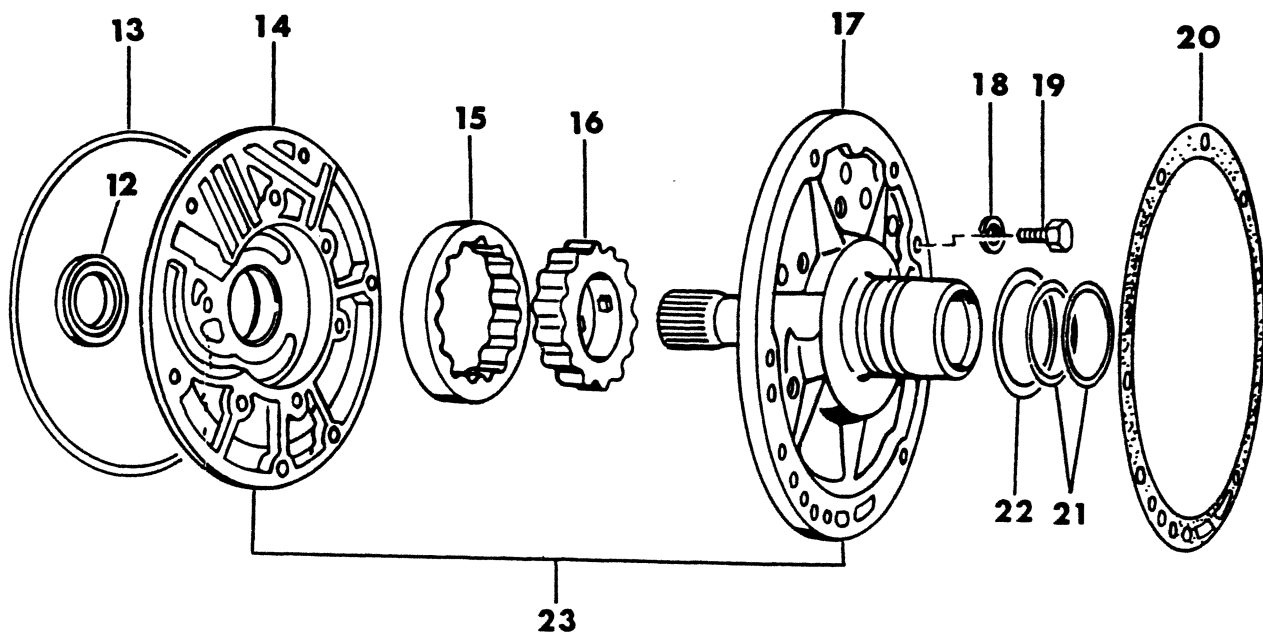
Printed in U.S.A.

June, 1982

TRANSMISSION, 3 SPEED A727-A904-A999 AUTOMATIC
OIL PUMP AND REACTION SHAFT SUPPORT
B-D-W-AD-AW-RD-CB-MB-M



Oil Pump and Reaction Shaft Support (A-727)



Oil Pump and Reaction Shaft Support Disassembled (A-904)

ITEM	PART NUMBER	QTY	MODEL	DESCRIPTION
				TRANSMISSION, 3 SPEED A727-A904-A999 AUTOMATIC OIL PUMP AND REACTION SHAFT SUPPORT B-D-W-AD-AW-RD-CB-MB-M
	3780 239	1		ROTOR PACKAGE, Frt. Oil Pump, A727 Consists Of: 1 - Rotor, Frt. Oil Pump, Inner 1 - Rotor, Frt. Oil Pump, Outer
	4057 014	1		SEAL AND GASKET PKG., Frt. Pump, A727 Consists Of: 1 - 3515137 SEAL, T/C Impeller Hub 1 - 1942021 SEAL, Oil Pump Hsg. 1 - 4028377 GASKET, Oil Pump Hsg. 2 - 2801054 RING, Seal Input Shaft 2 - 3743689 RING, Seal Reaction Shaft Supt. 1 - 81-685-1866 Instruction Sheet
	4131 042	1	B-D	SEAL AND GASKET PKG., Frt. Pump, A904,A999 Consists Of: 1 - 3515138 SEAL, T/C Impeller Hub 1 - 2204709 SEAL, Oil Pump 1 - 4028364 Gasket, T/C Reaction Shaft Support 2 - 1942389 Ring Seal, Reaction Shaft Support 1 - 1401221 Ring Seal, Input Shaft Frt. 1 - 1323593 Ring Seal, Rr. Clutch Retainer 1 - 4028333 Ring Seal, Rr. Clutch Retainer 1 - Sheet, Instruction
1	2466 324	1	All	BUSHING, Frt. Pump Housing
2	1942 021	1	All	SEAL, Frt. Pump Housing
3	4130 193	1	All	HOUSING w/BUSHING and PLUG, Frt. Pump
	179 815	6	All	SCREW, Oil Pump Hsg. 5/16-18 x 11/16"
4	3420 087	1	All	BAFFLE w/NAIL, Frt. Pump Hsg. Vent
5	4028 377	1	All	GASKET, Frt. Pump Housing
6		1	All	ROTOR, (Serviced in Rotor Pkg. No. 3780239)
7		1	All	ROTOR, (Serviced in Rotor Pkg. No. 3780239)
8	4028 273	1	All	SHAFT w/SUPPORT, Reaction, w/Lock Up Torque Converter w/o Lock Up Torque Converter
	4058 929	1	All	BUSHING, Reaction Shaft
	2801 348	1	All	BALL, Support, Small 9/32"
	114 861	3	All	Large 11/32"
	147 488	4	All	WASHER, Frt. Clutch Thrust, Frt., 3-21/64" O.D. Green, .061" Thk.
9			All	Red, .084" Thk.
	2204 622	AR	All	Yellow, .102" Thk.
	2204 623	AR	All	RING, Reaction Shaft Support Seal
	2400 284	AR	All	SCREW w/WA., Support Hsg., 5/16-18 x 1 1/8"
10	3743 689	2	All	BOLT, Support 5/16-18 x 11/16"
11	6023 943	7	All	BUSHING, Frt. Pump Hsg., A904-A999
	179 815	6	All	SEAL, Frt. Pump Hsg. 8-17/64" O.D., A904-A999
12	2466 796	1	B-D	HOUSING w/BUSHING, ROTORS AND SEAL, Frt. Pump, A904-A999
13	2204 709	1	B-D	ROTOR, (Serviced in 4130192)
14	4130 192	1	B-D	ROTOR, (Serviced in 4130192)
15		1	B-D	SHAFT w/SUPPORT, Reaction, A904-A999
16		1	B-D	BUSHING, Shaft, A904-A999
17	4058 413	1	B-D	
	4058 635	1	B-D	

LIGHT A = All Sport Utility (Ramcharger).

B = All Compact Models.

D = Conventional Cab.

DUTY AD = 2 Wheel Drive Only (Ramcharger).

CB-MB = Compact Front Section Only.

W = Conventional Cab 4 Wheel Drive.

CODES: AW = 4 Wheel Drive Only (Ramcharger).

P = Forward Control Chassis.

M = Motor Home.

MEDIUM-HEAVY CODES: XNT = Low Cab Forward. D = Conventional Cab. S = School Bus. W = 4-Wheel Drive.

AR=Use as Required

= New Part Number

Printed in U.S.A.

June, 1982

1978-81 LIGHT DUTY TRUCK PARTS CATALOG

TRANSMISSION, AUTO.

ITEM	PART NUMBER	QTY	MODEL	DESCRIPTION
TRANSMISSION, 3 SPEED A727-A904-A999 AUTOMATIC OIL PUMP AND REACTION SHAFT SUPPORT B-D-W-AD-AW-RD-CB-MB-M				
	104 918	AR	B-D	BALL, Reaction Shaft Suppt., 1/4" Dia., A904-A999
18		6	B-D	LOCK WA., (Not Serviced)
19	6023 943	6	B-D	SCREW w/WA., Hsg., 5/16-18 x 1-3/8", A904,A999
	179 815	6	B-D	BOLT, Support 5/16-18 x 11/16", A904-A999
20	4028 364	1	B-D	GASKET, Reaction Shaft Support, A904-A999
21	1942 389	2	B-D	RING, Reaction Shaft Support Seal 2-1/16 I.D., A904-A999
22	3410 572	1	B-D	WASHER, Frt. Clutch Thrust, 2-5/8" O.D., A904-A999
23	4202 089	1	B-D	SUPPORT ASSY., Oil Pump And Reaction Shaft, A904-A999

LIGHT	A = All Sport Utility (Ramcharger).	B = All Compact Models.	D = Conventional Cab.
DUTY	AD = 2 Wheel Drive Only (Ramcharger).	CB-MB = Compact Front Section Only.	W = Conventional Cab 4 Wheel Drive.
CODES:	AW = 4 Wheel Drive Only (Ramcharger).	P = Forward Control Chassis.	M = Motor Home.

MEDIUM-HEAVY CODES: XNT = Low Cab Forward. D = Conventional Cab. S = School Bus. W = 4-Wheel Drive.

AR=Use as Required

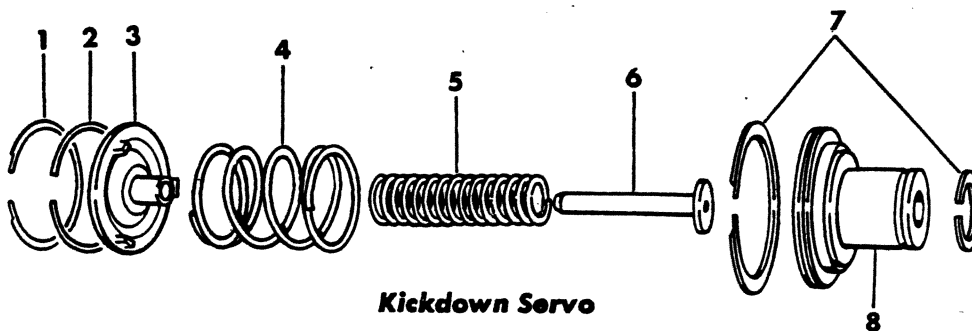
= New Part Number

Printed in U.S.A.

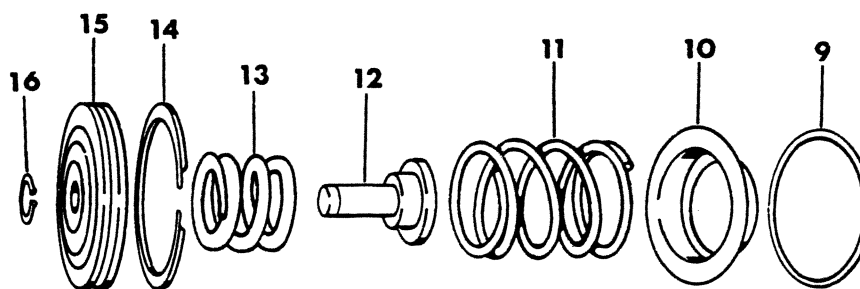
June, 1982

TRANSMISSION, 3 SPEED A727-A904-A999 AUTOMATIC
SERVOS, ACCUMULATOR PISTON AND SPRING
B-D-W-AD-AW-RD-CB-MB-M

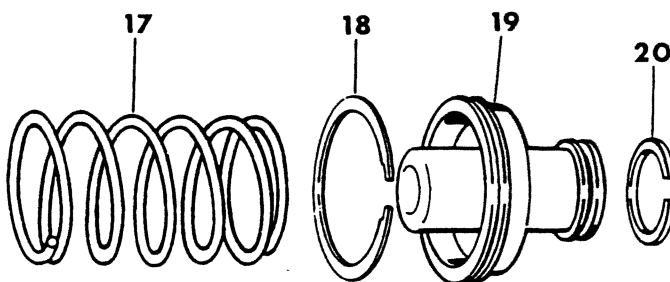
8351 400



Kickdown Servo



Low and Reverse Servo



Accumulator Piston and Spring

ITEM	PART NUMBER	QTY	MODEL	DESCRIPTION
TRANSMISSION, 3 SPEED A727-A904-A999 AUTOMATIC SERVOS, ACCUMULATOR PISTON AND SPRING B-D-W-AD-AW-RD-CB-MB-M				
1	1942 130	1		SNAP RING, Kickdown Servo Guide, A727
	6028 863	1	B-D	2-3/8" I.D., A904,A999
2	1942 123	1		RING, Kickdown Servo Guide Seal, A727
	3410 372	1	B-D	2-3/8" I.D., A904,A999
3				GUIDE, Kickdown Servo,
	3410 441	1		w/225,318,360 and MMC DIESEL Eng., A727
	2124 856	1		w/400,440,446 Eng., A727
	3410 332	1	B-D	A904,A999
4	3410 518	1		SPRING, K/Down Servo Piston, Outer, 5 Coils, 1-19/64" Lgh., w/225,318,360 and MMC DIESEL Eng., A727
	2125 069	1		5 Coils, 1-23/64" Lgh., w/400,440 Eng., A727
	4202 653	1	B-D	w/225 Eng., A904
	4058 885	1	B-D	w/318 Eng., A999
	3410 444	1		SPRING, Kickdown Servo Piston, Inner, 6 Coils, w/225,318,360 and MMC DIESEL Eng., A727
6	3515 112	1		20 Coils, 2-1/2" Lgh., w/400,440,446 Eng., A727
	2124 853	1		ROD, Kickdown Servo Piston, w/400,440,446 Eng., A727
	4058 780	1	B-D	A904,A999
7	2124 851	1		RING, Kickdown Servo Piston Seal, Small, A727
	3410 374	1	B-D	1" O.D., A904,A999
	1942 123	1		Large, A727
	3410 372	1	B-D	2-3/8" O.D., A904,A999
8				PISTON, Kickdown Servo
	3410 440	1		w/225,318,360 and MMC DIESEL Eng., A727
	2124 850	1		w/400,440,446 Eng., A727
	3410 445	1		Inner, w/Rod and Seal, w/225,318,360 and MMC DIESEL Eng., A727
	4058 777	1	B-D	A904,A999
	3410 437	1		RETAINER, Kickdown Piston, Inner, w/225,318,360 and MMC DIESEL Eng., A727
	6028 864	1	All	SEAL, Inner, 15/16 x 1-1/8" x 3/32", w/225,318,360 and MMC DIESEL Eng.
	6024 336	1	All	SNAP RING, Inner, 1-1/8" I.D.
9	1942 130	1		SNAP RING, Reverse Servo Piston Spring Retainer, A727
	2464 464	1	B-D	A904,A999
10	1942 150	1		RETAINER, Reverse Servo Piston Spring, A727
	2464 463	1	B-D	A904,A999
11	2801 241	1		SPRING, Reverse Servo Piston, A727
	2801 274	1	B-D	A904,A999
12	3743 353	1	All	PLUG, Reverse Servo Piston, 1-53/64" Lgh.
13	3743 580	1		SPRING, Reverse Servo Cushion, A727
	4130 824	1	B-D	A904,A999
	2464 481	1		SEAL, Reverse Servo Piston, Rubber 1978-79, A727
14	4058 741	1		1980-81, A727
	2464 462	1	B-D	A904,A999
	2801 281	1		PISTON, Reverse Servo, A727
15	2801 271	1	B-D	A904,A999
	6027 153	1	All	RING, Reverse Servo Piston Plug, 7/16" I.D.
17	3515 079	1		SPRING, Accumulator, Lower, w/225,318,360 and MMC DIESEL Eng.
	3515 114	1		20 Coils, 2-15/64" Lgh., w/400,440,446 Eng., A727

LIGHT	A = All Sport Utility (Ramcharger).	B = All Compact Models.	D = Conventional Cab.
DUTY	AD = 2 Wheel Drive Only (Ramcharger).	CB-MB = Compact Front Section Only.	W = Conventional Cab 4 Wheel Drive.
CODES:	AW = 4 Wheel Drive Only (Ramcharger).	P = Forward Control Chassis.	M = Motor Home.

MEDIUM-HEAVY CODES: XNT = Low Cab Forward. D = Conventional Cab. S = School Bus. W = 4-Wheel Drive.

AR=Use as Required

= New Part Number

Printed in U.S.A.

June, 1982

1978-81 LIGHT DUTY TRUCK PARTS CATALOG

TRANSMISSION, AUTO.

ITEM	PART NUMBER	QTY	MODEL	DESCRIPTION
------	-------------	-----	-------	-------------

**TRANSMISSION, 3 SPEED A727-A904-A999 AUTOMATIC
 SERVOS, ACCUMULATOR PISTON AND SPRING
 B-D-W-AD-AW-RD-CB-MB-M**

	4130 993	1	W-AW	w/225,318,360 Eng. - 1980
	3515 079	1	All	1981
18	1315 158	1	All	RING, Accumulator Piston Seal, Large
19	3410 908	1	All	PISTON, Accumulator
20	1941 831	1	All	RING, Accumulator Piston Seal, Small - 1978, A727
	1401 221	1	All	1979-80-81

LIGHT	A = All Sport Utility (Ramcharger).	B = All Compact Models.	D = Conventional Cab.
DUTY	AD = 2 Wheel Drive Only (Ramcharger).	CB-MB = Compact Front Section Only.	W = Conventional Cab 4 Wheel Drive.
CODES:	AW = 4 Wheel Drive Only (Ramcharger).	P = Forward Control Chassis.	M = Motor Home.

MEDIUM-HEAVY CODES: XNT = Low Cab Forward. D = Conventional Cab. S = School Bus. W = 4-Wheel Drive.

AR=Use as Required

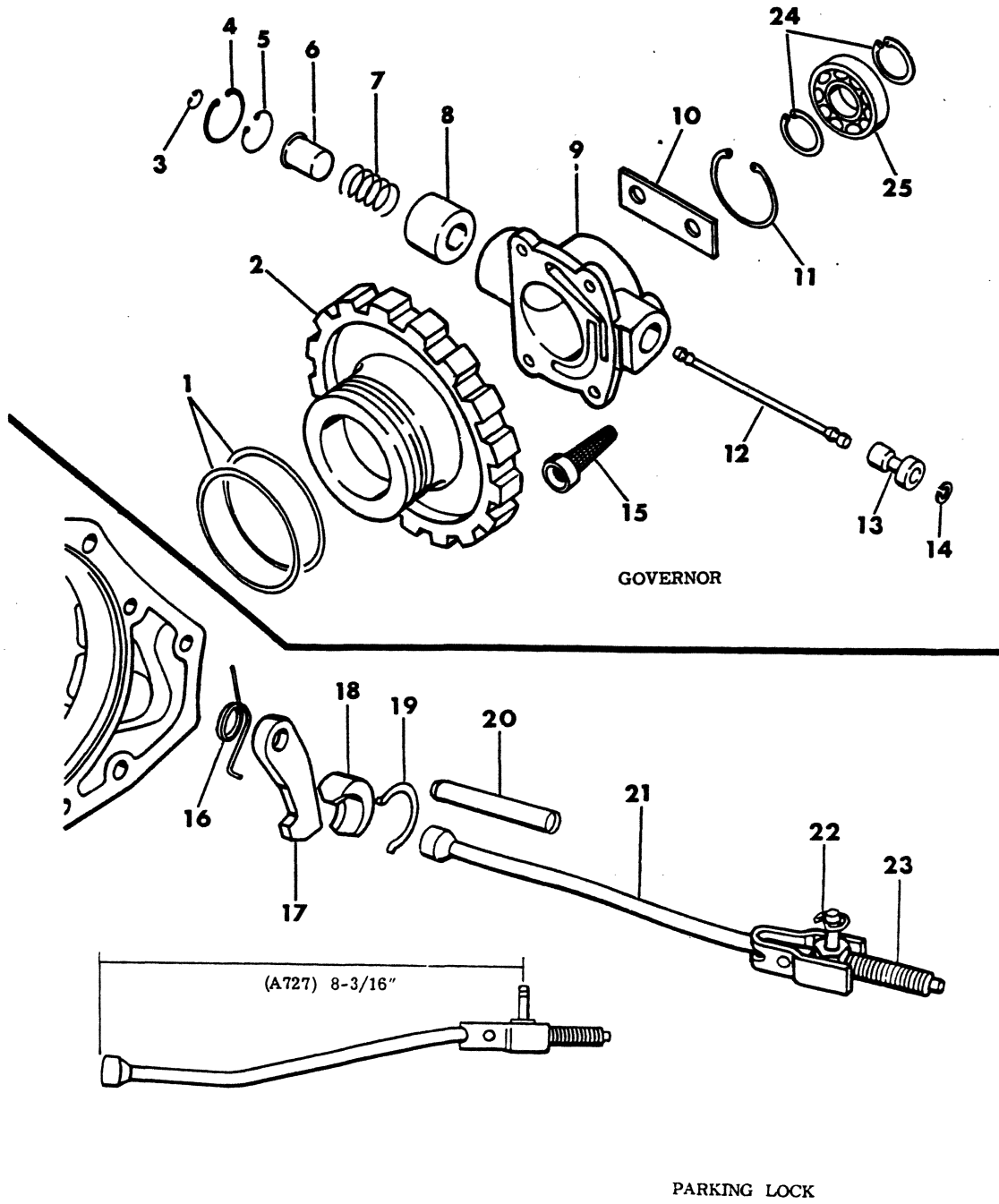
=New Part Number

Printed in U.S.A.

June, 1982

8351 500C

TRANSMISSION, 3 SPEED A727-A904-A999 AUTOMATIC
GOVERNOR AND PARKING LOCK
B-D-W-AD-AW-RD-CB-MB-M



GOVERNOR

PARKING LOCK

ITEM	PART NUMBER	QTY	MODEL	DESCRIPTION
------	-------------	-----	-------	-------------

**TRANSMISSION, 3 SPEED A727-A904-A999 AUTOMATIC
GOVERNOR AND PARKING LOCK
B-D-W-AD-AW-RD-CB-MB-M**

4106 587	1			REPAIR PACKAGE, Governor, A727 Except 360 High Performance Eng. - 1978-79 Consists Of: 1 - --- Body, Gov. 2 - 1942109 Ring, Gov. Support Seal 2 - 3743520 Lock, Gov. Body Bolt 4 - 0180020 Bolt, Gov. Body 1 - 6022817 Snap Ring, Gov. Body 1 - 3515482 Weight, Gov. (Inner) 1 - 1636461 Weight, Gov. (Outer) 1 - 3515110 Spring, Gov. Weight 1 - 1636464 Snap Ring, Gov. Weight (Inner) 1 - 1636465 Snap Ring, Gov. Weight, Outer 1 - 3515479 Valve, Gov. 1 - 2556082 Shaft, Gov. Valve 2 - 1638461 Snap Ring, Gov. Valve Shaft 1 - 3743519 Filter, Gov. 1 - ----- Instruction Sheet
3780 242	1	D1		REPAIR PACKAGE, Governor, A727 With 360 High Performance Eng. - 1978-79 Consists Of: 1 - --- Body, Gov. 2 - 1942109 Ring, Gov. Support Seal 2 - 3743520 Lock Gov. Body Bolt 4 - 6022817 Snap Ring Body 1 - 3515478 Weight, Gov., Inner 1 - 1636461 Weight, Gov., Outer 1 - 3515110 Spring, Gov. Weight 1 - 1636464 Snap Ring, Gov. Weight, Inner 1 - 1636465 Snap Ring, Gov. Weight, Outer 1 - 3515479 Valve, Gov. 1 - 1556082 Shaft, Gov. Valve 2 - 1638461 Snap Ring, Gov. Valve Shaft 1 - 3743519 Filter, Gov. 1 - ----- Instruction Sheet
4106 588	1			REPAIR PACKAGE, Governor, A727 w/MMC DIESEL ENG. - 1978
4131 017	1			1979 Consists Of: 1 - --- Body, Gov. 2 - 1942109 Ring, Gov. Support Seal 2 - 3743520 Lock, Gov. Body Bolt 4 - 0180020 Bolt, Gov. Body 1 - 6022817 Snap Ring, Body 1 - 4058755 Weight, Outer 1 - 4058756 Weight, Inner 1 - 4058757 Spring, Weight 1 - 1636464 Snap Ring, Weight, Inner 1 - 1636465 Snap Ring, Weight, Outer

LIGHT	A = All Sport Utility (Ramcharger).	B = All Compact Models.	D = Conventional Cab.
DUTY	AD = 2 Wheel Drive Only (Ramcharger).	CB-MB = Compact Front Section Only.	W = Conventional Cab 4 Wheel Drive.
CODES:	AW = 4 Wheel Drive Only (Ramcharger).	P = Forward Control Chassis.	M = Motor Home.

MEDIUM-HEAVY CODES: XNT = Low Cab Forward. D = Conventional Cab. S = School Bus. W = 4-Wheel Drive.

AR=Use as Required

=New Part Number

Printed in U.S.A.

June, 1982

1978-81 LIGHT DUTY TRUCK PARTS CATALOG

TRANSMISSION, AUTO.

ITEM	PART NUMBER	QTY	MODEL	DESCRIPTION
------	-------------	-----	-------	-------------

**TRANSMISSION, 3 SPEED A727-A904-A999 AUTOMATIC
 GOVERNOR AND PARKING LOCK
 B-D-W-AD-AW-RD-CB-MB-M**

				1 - 3515479 Valve, Gov.
				1 - 1556082 Shaft, Gov. Valve
				2 - 1638461 Snap Ring, Valve Shaft
				1 - 3743519 Filter, Gov.
				1 - ----- Sheet, Instruction
	4186 875	1		BODY PACKAGE, Governor - A727 Trans. - 1980-81
				Consists Of:
				1 - 4130881 Body, Governor
				1 - 3743519 Valve, Gov.
				2 - 1942109 Ring, Support Seal
				4 - 6031613 Bolt, Body
				1 - 6027271 Snap Ring, Gov. Body
				1 - 6025031 Snap Ring, Weight, Outer
				1 - 3515479 Valve, Governor
				1 - 1556082 Shaft, Gov. Valve
				2 - 1638461 Snap Ring, Valve Shaft
	4186 874	1	B-D	BODY PACKAGE, Governor - A904,A999 - 1981
	4106 557	1		SEALS, GASKET and FILTER PACKAGE - A727, w/LONG EXTENSION
				Consists Of:
				1 - 4057046 Speedo. Pinion Small Parts Pkg.
				1 - 3743519 Filter, Gov.
				1 - 3515383 Seal, Yoke (Large)
				1 - 2466954 Gasket, Extension
				1 - 2801398 Gasket, Output Shaft Brg. Cover
				1 - 1316815 Seal, Oil Filler Tube
				2 - 1942109 Ring Seal, Gov. Support
	4057 016	1		SEAL, GASKET and FILTER PACKAGE - A727, w/SHORT EXTENSION
				Consists Of:
				1 - 4057046 SSpeedo. Pinion Small Parts Pkg.
				1 - 3743519 Filter, Governor
				1 - 2205080 Seal, O/P Shaft
				1 - 2466954 Gasket, Ext.
				1 - 2801398 Gskt., O/P Shaft Brg. Cover
				1 - 1316815 Seal, Oil Filler Tube
				2 - 1942109 Ring, Seal Gov. Supt.
	4106 556	1	B-D	SEAL, GASKET and FILTER PACKAGE - A904,A999
				Consists Of:
				1 - 4057046 SSpeedo. Pinion Small Parts Pkg.
				1 - 3743519 Filter, Governor
				1 - 3515384 Seal, Yoke (Small)
				1 - 2466954 Gasket, Ext.
				1 - 2801398 Gskt., O/P Shaft Brg. Cover
				1 - 1316815 Seal, Oil Filler Tube
				2 - 1942109 Ring, Seal Gov. Supt.
	4058 858	1		WEIGHT PACKAGE, Governor, w/225,318,360,440,446 Eng., Except 360 High Performance Eng. - 1979
				Consists Of:
				1 - 3515482 Weight, Inner
				1 - 1636461 Weight, Outer

LIGHT	A = All Sport Utility (Ramcharger).	B = All Compact Models.	D = Conventional Cab.
DUTY	AD = 2 Wheel Drive Only (Ramcharger).	CB-MB = Compact Front Section Only.	W = Conventional Cab 4 Wheel Drive.
CODES:	AW = 4 Wheel Drive Only (Ramcharger).	P = Forward Control Chassis.	M = Motor Home.

MEDIUM-HEAVY CODES: XNT = Low Cab Forward. D = Conventional Cab. S = School Bus. W = 4-Wheel Drive.

AR=Use as Required

=New Part Number

Printed in U.S.A.

June, 1982

ITEM	PART NUMBER	QTY	MODEL	DESCRIPTION
TRANSMISSION, 3 SPEED A727-A904-A999 AUTOMATIC GOVERNOR AND PARKING LOCK B-D-W-AD-AW-RD-CB-MB-M				
				1 - 3515127 Spring, 3.1 Lb. Spring Load
				1 - 1636464 Snap Ring, Weight, Inner
	4130 891	1		1980-81
				Consists Of:
				1 - 3515482 Weight, Inner
				1 - 4130851 Weight, Outer
				1 - 4202043 Spring, 3.0 Lb. Spring Load
				1 - 1636464 Snap Ring, Weight, Inner
	3515 483	1	D1	WEIGHT PACKAGE, Governor, w/360 High Performance Eng. - 1979
				Consists Of:
				1 - 3515478 Weight, Inner
				1 - 1636461 Weight, Outer
				1 - 3515085 Spring, 3.3 Lb. Spring Load
				1 - 1636464 Snap Ring, Weight, Inner
	4130 892	1	D1	1980
				Consists Of:
				1 - 3515478 Weight, Inner
				1 - 4130851 Weight, Outer
				1 - 3515085 Spring, 3.3 Lb. Spring Load
				1 - 1636464 Snap Ring, Weight, Inner
	4130 638	1		WEIGHT PACKAGE, Governor, w/MMC DIESEL Eng. - 1979
				Consists Of:
				1 - 4058756 Weight, Inner
				1 - 4130637 Weight, Outer
				1 - 4058757 Spring, 5.0 Lb. Spring Load
				1 - 1636464 Snap Ring, Weight, Inner
	4130 894	1		1980
				Consists Of:
				1 - 4058756 Weight, Inner
				1 - 4130853 Weight, Outer
				1 - 4058757 Spring, 5.0 Lb. Spring Load
				1 - 1636464 Snap Ring, Weight, Inner
	4202 658	1	B-D	WEIGHT PACKAGE, Governor, w/A904,A999 Trans.
				Consists Of:
				1 - 3515482 Weight, Inner
				1 - 4130851 Weight, Outer
				1 - 4130140 Spring 3.8 Lb. Spring Load
				1 - 1636464 Snap Ring, Weight, Inner
1	1942 109	2	All	RING, Governor Support Seal, Frt. & Rr.
2	3743 517	1		SUPPORT, Governor, A727
	3743 518	1	B-D	A904,A999
3	1638 461	2	All	SNAP RING, Governor Valve Shaft
4	1636 465	1	All	SNAP RING, Governor Weight, Outer - 1978-79, A727
	6025 031	1	All	1980-81
5	1636 464	1	All	SNAP RING, Governor Weight, Inner
6	3515 482	1	All	WEIGHT, Gov. Inner, w/225,318,360,400,440,446 Eng., Except 360 High Performance Eng.
	3515 478	1	D1	w/360 High Performance Eng., A727
	4058 756	1		w/MMC DIESEL Eng., A727

LIGHT	A = All Sport Utility (Ramcharger).	B = All Compact Models.	D = Conventional Cab.
DUTY	AD = 2 Wheel Drive Only (Ramcharger).	CB-MB = Compact Front Section Only.	W = Conventional Cab 4 Wheel Drive.
CODES:	AW = 4 Wheel Drive Only (Ramcharger).	P = Forward Control Chassis.	M = Motor Home.
MEDIUM-HEAVY CODES:	XNT = Low Cab Forward.	D = Conventional Cab.	S = School Bus. W = 4-Wheel Drive.

AR=Use as Required

=New Part Number

Printed in U.S.A.

June, 1982

1978-81 LIGHT DUTY TRUCK PARTS CATALOG

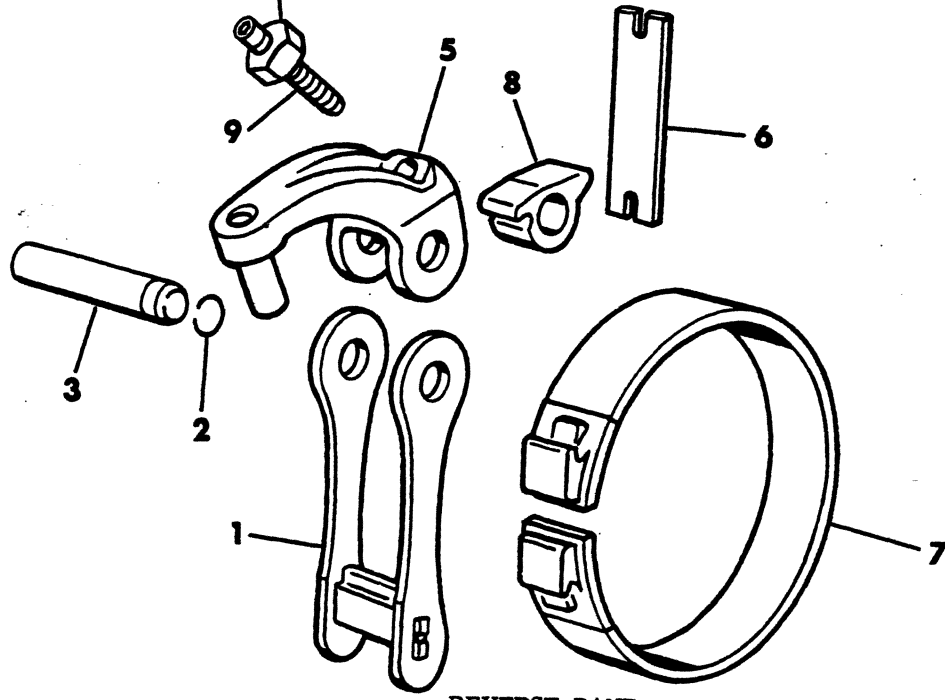
TRANSMISSION, AUTO.

ITEM	PART NUMBER	QTY	MODEL	DESCRIPTION
TRANSMISSION, 3 SPEED A727-A904-A999 AUTOMATIC GOVERNOR AND PARKING LOCK B-D-W-AD-AW-RD-CB-MB-M				
7	3515 127	1		SPRING, Gov. Weight, w/225,318,360,400,440,446 Eng., Except 360 High Perf. Eng. - 1978-79, A727
	4202 043	1		w/225,318,360,446 Eng. - 1980-81, A727
	3515 085	1	D1	w/360 High Performance Eng., A727
	4058 757	1		w/MMC DIESEL Eng., A727
8	1636 461	1		WEIGHT, Gov., Outer, w/225,318,360,400,440,446 Eng. - 1978-79, A727
	4130 851	1	All	1980-81
	4130 637	1		w/MMC DIESEL Eng. - 1979, A727
	4130 853	1		1980, A727
9		1		HOUSING, (Serviced in Gov. Repair Pkg.)- 1978-79
	4130 881	1		HOUSING or BODY, Governor - 1980-81, A727
	4186 875	1		BODY PACKAGE, Gov. - 1980-81 (Refer to Pkg. Above), A727
	4186 874	1	B-D	BODY PACKAGE, Gov. - 1981 (Refer to Pkg. Above), A904,A999
	179 794	4		SCREW, Gov. Body Mtg., 1/4-20 x 3/4" - 1978-79, A727
	6031 613	4	All	1980-81
10	3743 520	2		LOCK, Gov. Body Bolt, Off-Set Type
11	6022 817	1		SNAP RING, Governor Body, A727
	6027 271	1	B-D	A904,A999
12	1556 082	1	All	SHAFT, Governor Valve
13	3515 479	1	All	VALVE, Governor
14	1638 461	1	All	SNAP RING, Governor Valve Shaft
15	3743 519	1	All	FILTER, Governor
16	2466 909	1	All	SPRING, Trans. Parking Sprag
17	2801 157	1	All	SPRAG, Trans. Parking
18	2538 042	1	All	PLUG, Parking Sprag Reaction
	9417 504	1	All	PIN, Sprag Plug 5/32 x 7/16" Lg.
19	2538 034	1	All	SNAP RING, Reaction Plug
20	2466 892	1	All	SHAFT, Trans. Parking Sprag
21	2466 894	1		ROD Assy., Parking Sprag, A727
	2466 906	1	B-D	A904,A999
22	1626 749	1	All	E-RING, Rod
23		1	All	SPRING, (Serviced in Parking Sprag Rod Assy.)
24	6025 570	2		SNAP RING, Output Shaft Brg., w/Long Ext., A727
	6029 675	1	B-D	1-37/64" O.D., A904,A999
25	2466 224	1		BEARING, Output Shaft, w/Long Extension, A727
	3410 465	1	B-D	A904,A999

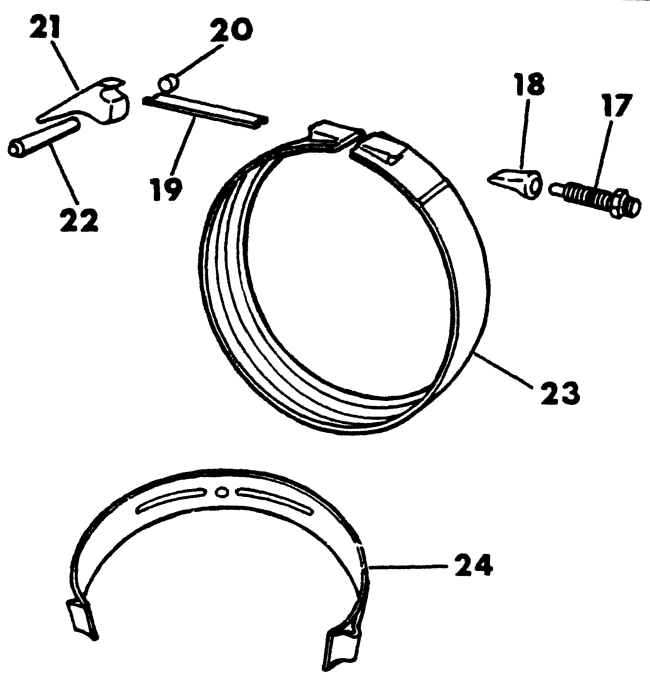
LIGHT	A = All Sport Utility (Ramcharger).	B = All Compact Models.	D = Conventional Cab.
DUTY	AD = 2 Wheel Drive Only (Ramcharger).	CB-MB = Compact Front Section Only.	W = Conventional Cab 4 Wheel Drive.
CODES:	AW = 4 Wheel Drive Only (Ramcharger).	P = Forward Control Chassis.	M = Motor Home.
MEDIUM-HEAVY CODES: XNT = Low Cab Forward. D = Conventional Cab. S = School Bus. W = 4-Wheel Drive.			

AR=Use as Required # =New Part Number Printed in U.S.A. June, 1982

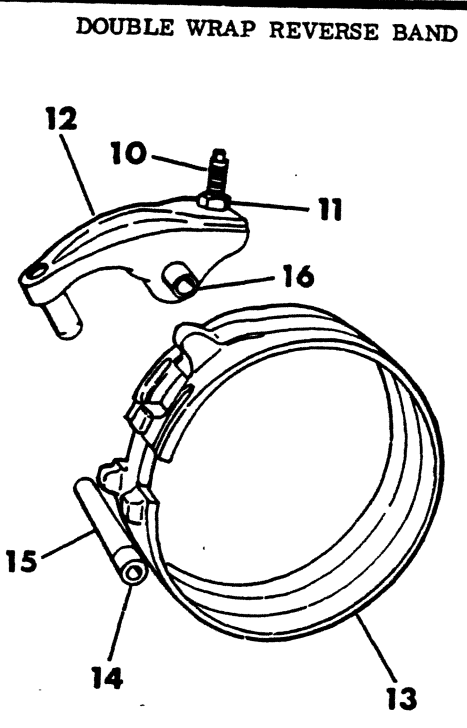
TRANSMISSION, 3 SPEED A727-A904-A999 AUTOMATIC
REVERSE AND KICKDOWN BAND AND LINKAGE
B-D-W-AD-AW-RD-CB-MB-M



REVERSE BAND



KICKDOWN BAND



DOUBLE WRAP REVERSE BAND

ITEM	PART NUMBER	QTY	MODEL	DESCRIPTION
TRANSMISSION, 3 SPEED A727-A904-A999 AUTOMATIC REVERSE AND KICKDOWN BAND AND LINKAGE B-D-W-AD-AW-RD-CB-MB-M				
1	2204 820	1		LINK w/ANCHOR, Reverse Band, A727
2	6030 910	1		SEAL, Reverse Band Lever Shaft, A727
3	2124 857	1		SHAFT, Reverse Band Lever, A727
4	271 506	1		NUT, Lock Adj. Screw, 7/16-20, A727
5	1942 137	1		LEVER w/STEM, Rev. Band, A727
6	2204 823	1		STRUT, Reverse Band, A727
7	1942 133	1		BAND, Reverse, A727
8	3515 347	1		LEVER, Reverse Band Short, A727
9	1942 141	1		SCREW, Rev. Band, Adjusting, A727
10	2538 472	1	B-D	A904,A999
11	120 369	1	B-D	NUT, Lock Adj. Screw, A904,A999
12	2801 815	1	B-D	LEVER w/STEM, Rev. Band, A904,A999
13	4130 981	1	B-D	BAND, Reverse, A904,A999
14	6030 657	1	B-D	SEAL, Rev. Band Lever Shaft, A904,A999
15	3410 102	1	B-D	SHAFT, Rev. Band Reaction, A904,A999
16	3410 102	1	B-D	SHAFT, Rev. Band Lever, A904,A999
17	2400 389	1		SCREW, Kickdown Band Adj., A727
	1942 477	1	B-D	A904,A999
18	3743 338	1		ANCHOR, Kickdown Band, A727
19	2124 848	1		STRUT, Kickdown Band, A727
	3515 084	1	B-D	A904,A999
20		1	All	Plug, Shaft Lever
21	3515 116	1		LEVER, Kickdown Band, w/225 and MMC DIESEL Eng., A727,A904
	2204 952	1		w/318,360 Eng., A727
	2125 067	1		w/400,440,446 Eng., A727
	2124 666	1	B-D	w/318 Eng., A999
22	1942 132	1	All	SHAFT, Kickdown Lever
23	4058 863	1	B-D	BAND, Kickdown, A904,A999
24	3621 491	1		BAND, Kickdown, A727

LIGHT	A = All Sport Utility (Ramcharger).	B = All Compact Models.	D = Conventional Cab.
DUTY	AD = 2 Wheel Drive Only (Ramcharger).	CB-MB = Compact Front Section Only.	W = Conventional Cab 4 Wheel Drive.
CODES:	AW = 4 Wheel Drive Only (Ramcharger).	P = Forward Control Chassis.	M = Motor Home.

MEDIUM-HEAVY CODES: XNT = Low Cab Forward. D = Conventional Cab. S = School Bus. W = 4-Wheel Drive.

AR=Use as Required

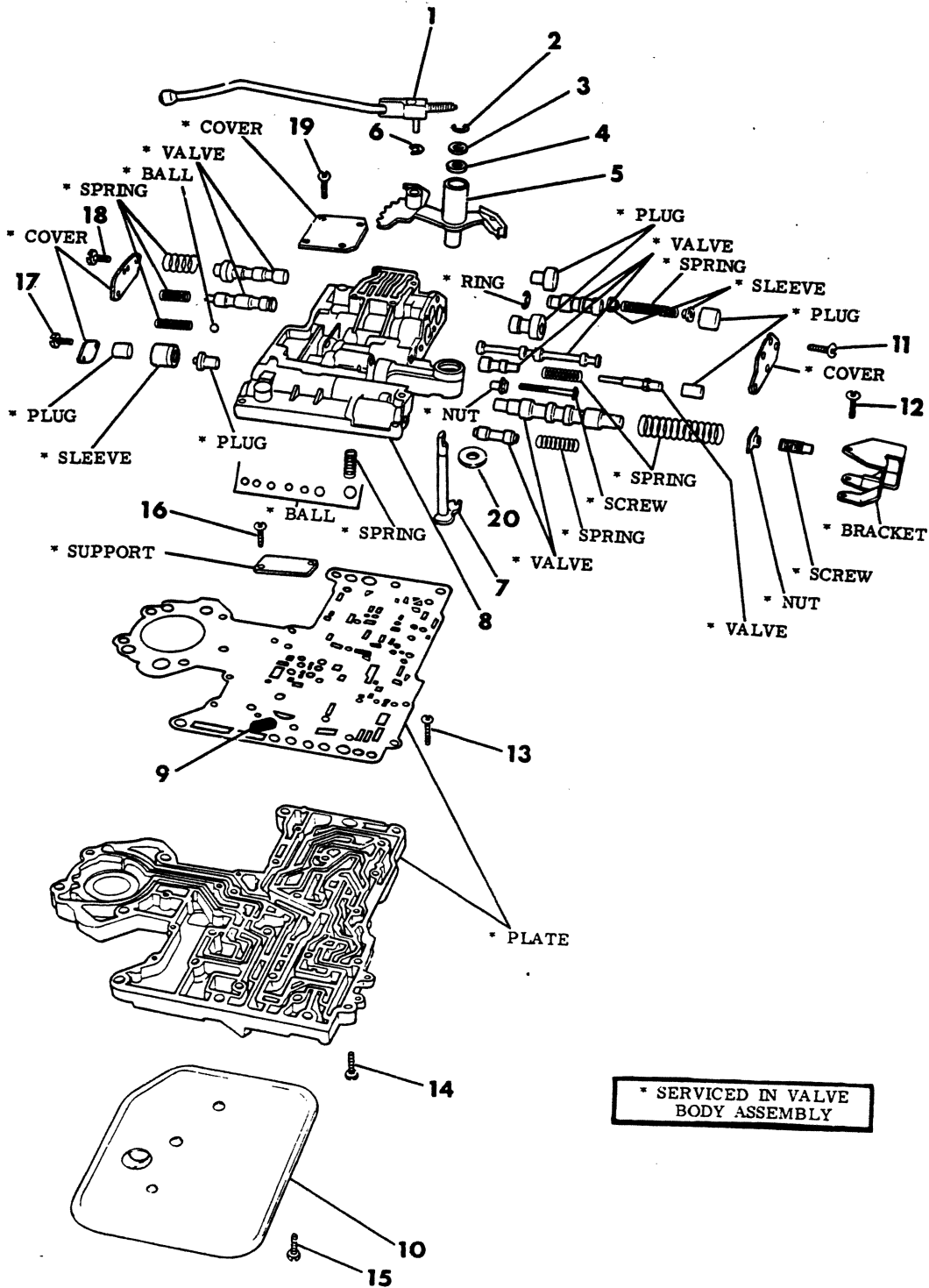
=New Part Number

Printed in U.S.A.

June, 1982

TRANSMISSION, 3 SPEED A727-A904-A999 AUTOMATIC
 VALVE BODY
 B-D-W-AD-AW-RD-CB-MB-M

8351 700



ITEM	PART NUMBER	QTY	MODEL	DESCRIPTION
------	-------------	-----	-------	-------------

**TRANSMISSION, 3 SPEED A727-A904-A999 AUTOMATIC
VALVE BODY
B-D-W-AD-AW-RD-CB-MB-M**

	4057 013	1		SEAL AND GASKET PKG.- A727, Valve Body and Servo Recondition Consists Of: 1 - 3878313 SCREEN, Regulator Valve 1 - 3878447 SEAL, Manual Valve Shaft 1 - 6028864 SEAL, K/Dn. Inner Piston 1 - 6030910 SEAL, Rev. Band Lvr. Shaft 1 - 2464481 SEAL, Rev. Servo Piston 1 - 2466548 SEAL, Throttle Lever Shaft 1 - 2464324 GASKET, Trans. Oil Pan 1 - 2124851 RING, Seal K/Dn. Servo Piston Small 2 - 1942123 RING, Seal K/Dn. Servo Piston and Guide 1 - 1941831 RING, Seal Accumulator Piston Small 1 - 1315158 RING, Seal Accumulator Piston Large 1 - 3515996 FILTER, Trans. Oil
	4057 018	1	B-D	SEAL AND GASKET PKG.- A904,A999 Valve Body and Servo Recondition Consists Of: 1 - 3878313 SCREEN, Regulator Valve 1 - 3878447 SEAL, Manual Valve Shaft 1 - 6028864 SEAL, K/Dn. Inner Piston 2 - 1556385 SEAL, Rev. Band Lvr. Shaft 1 - 2464462 SEAL, Rev. Servo Piston 1 - 2466548 SEAL, Throttle Lever Shaft 1 - 2205299 GASKET, Trans. Oil Pan 1 - 1824541 RING, Seal K/Dn. Servo Piston Small 1 - 3410374 RING, Seal K/Dn. Servo Piston Small- A999 1 - 6031410 SEAL, K/Dn. Servo Inner Piston 2 - 1636470 RING, Seal K/Dn. Servo Piston Large 2 - 3410372 RING, Seal K/Dn. Servo Piston Large- A999 1 - 1941831 RING, Seal Accumulator Piston Small 1 - 1315158 RING, Seal Accumulator Piston Large 1 - 3515996 FILTER, Trans. Oil
	4058 661	1		VALVE BODY ASSY., w/225 and MMC DIESEL Eng.- 1978
	4130 715	1		w/225 and MMC DIESEL Eng., w/o Lock Up Valve Body,A727 - 1979-80
	4130 714	1	B-D-AD	w/225 Eng., w/Lock Up Valve Body, A727 - 1979
	4202 217	1	B-D-W-AD	A727 - 1980
	4202 632	1	B-D-W	A727 - 1981
	4202 636	1	B-D	w/225 Eng., A904 - 1981
	4058 660	1		w/318,360 Eng., A727 - 1978
	4130 711	1		w/318,360,440,446 and 360 H- Perf. w/o Lock Up Valve Body, A727 - 1979-80
	4202 633	1		A727 - 1981
	4130 712	1	B-D-W-AD-AW	w/318 Eng., w/Lock Up Valve Body, A727 - 1979
	4202 216	1	B-D-W-AD-AW	w/318,360 Eng., A727 - 1980
	4202 578	1	B-D-W-AD-AW	w/318,360 Eng., A727 - 1981
	4202 634	1	B-D	w/318 Eng., A999 - 1981
	4058 662	1		w/400,440 Eng., - 1978
1	2466 894	1		ROD, Park Sprag, A727
	2466 906	1	B-D	A904,A999

LIGHT	A = All Sport Utility (Ramcharger).	B = All Compact Models.	D = Conventional Cab.
DUTY	AD = 2 Wheel Drive Only (Ramcharger).	CB-MB = Compact Front Section Only.	W = Conventional Cab 4 Wheel Drive.
CODES:	AW = 4 Wheel Drive Only (Ramcharger).	P = Forward Control Chassis.	M = Motor Home.

MEDIUM-HEAVY CODES: XNT = Low Cab Forward. D = Conventional Cab. S = School Bus. W = 4-Wheel Drive.

AR=Use as Required

= New Part Number

Printed in U.S.A.

June, 1982

1978-81 LIGHT DUTY TRUCK PARTS CATALOG

TRANSMISSION, AUTO.

ITEM	PART NUMBER	QTY	MODEL	DESCRIPTION
TRANSMISSION, 3 SPEED A727-A904-A999 AUTOMATIC VALVE BODY B-D-W-AD-AW-RD-CB-MB-M				
2	6025 857	1	All	"E" RING, Throttle Valve Lever Shaft
3	2538 062	1	All	WASHER, Throttle Valve Lever Shaft
4	2466 548	1	All	SEAL, Throttle Lever Shaft, Rubber, 5/8" O.D.
5	3410 484	1	All	LEVER, w/INSULATOR, Manual Valve (Color Natural)
	147 488	1	All	BALL, Manual Lever Detent, 11/32" Dia.
6	1626 749	1	All	"E" RING, Prk. Sprag Rod Swivel Ret.
7	3681 227	1	All	LEVER, Throttle Valve
8				BODY, Valve (Serviced in Assy.)
9	3878 313	1	All	SCREEN, Regulator Valve
10	3515 996	1	All	FILTER or STRAINER, Trans. Oil
11	6030 888	5	All	SCREW, Shuttle Valve Cover, 10-24 x 7/16"
12	6030 888	2	All	SCREW, Adj. Screw Bracket, 10-24 x 7/16"
13	6030 888	2	All	SCREW, Valve Body Plate to Transfer Plate
14	6030 889	14	All	SCREW, Transfer Plate to Valve Body, 10-24 x 1"
15	6030 895	3	All	SCREW, Oil Filter, 10-24 x 1-1/4"
16	6030 888	2	All	SCREW, Transfer Plate Support, 10-24 x 7/16"
17	6029 926	2	All	SCREW, Regulator Valve Cover, 10-24 x 7/16"
18	6029 926	2	All	SCREW, Shift Valve Plug Cover, 10-24 x 7/16"
19	6027 391	3	All	SCREW, Shift or Limit Valve Cover, 10-24 x 1"
	6029 926	3	All	10-24 x 7/16"
20	3878 447	1	All	SEAL, Manual Valve Shaft, 1-1/4" O.D.
	4130 478	1		SPRING, w/Lock Up Valve, 8 Coils, Orange, w/225 Eng., A727 - 1979
		1		w/225 Eng., A727 (Ser. In Valve Body Assy.) - 1980
	4202 642	1		w/225 Eng., A727 - 1981
	4202 672	1	B-D	w/225 Eng., A904 - 1981
	4202 642	1	B-D	w/318 Eng., A999 - 1981
	4202 474	1		VALVE, Trans, Lock Up Switch, A727
	4202 474	1	B-D	VALVE, Trans, Switch, A904,A999
	104 918	AR	All	BALL, Check Valve 1/4" Dia.

LIGHT DUTY CODES:	A = All Sport Utility (Ramcharger).	B = All Compact Models.	D = Conventional Cab.
	AD = 2 Wheel Drive Only (Ramcharger).	CB-MB = Compact Front Section Only.	W = Conventional Cab 4 Wheel Drive.
	AW = 4 Wheel Drive Only (Ramcharger).	P = Forward Control Chassis.	M = Motor Home.

MEDIUM-HEAVY CODES: XNT = Low Cab Forward. D = Conventional Cab. S = School Bus. W = 4-Wheel Drive.

AR=Use as Required

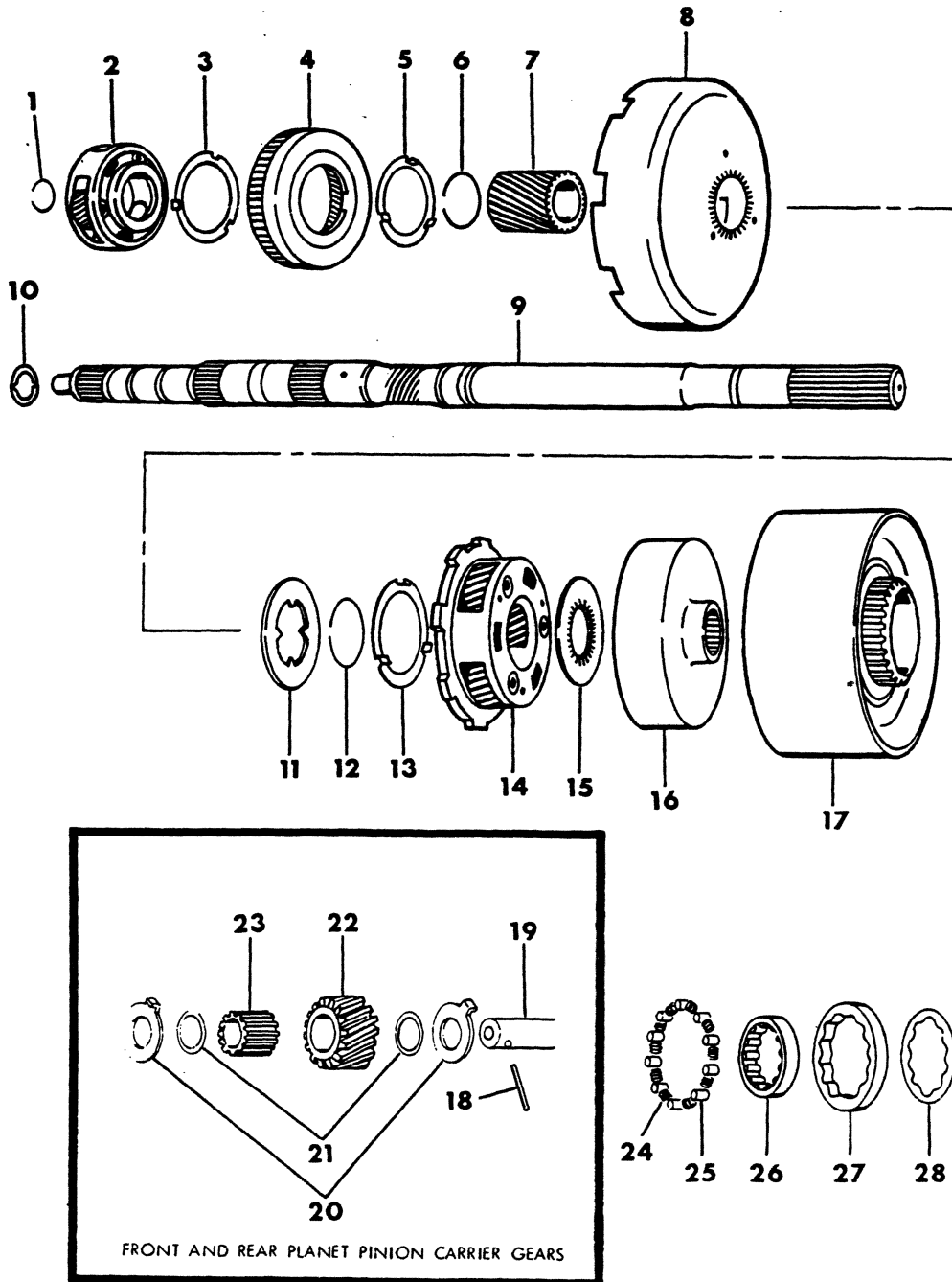
=New Part Number

Printed in U.S.A.

June, 1982

TRANSMISSION, 3 SPEED A727 AUTOMATIC
GEAR TRAIN AND OUTPUT SHAFT
B-D-W-AD-AW-RD-CB-MB-M

2351 800



ITEM	PART NUMBER	QTY	MODEL	DESCRIPTION
	2808 673	1		ROLLER and SPRING PACKAGE, "O" Running Clutch Consists Of: 12 - Roller 12 - 1942187 Spring
	3420 100	1		RACE, ROLLER and SPRING PACKAGE Consists Of : 1 - Race, "O" Running Clutch 12 - Roller, "O" Running Clutch 12 - 1942187 Spring, "O" Running Clutch
1	6030 982	AR		SNAP RING, Output Shaft, .048-.052" Thk.
	6024 311	AR		.055-.059" Thk.
	6024 312	AR		.062-.066" Thk.
2	4028 110	1		CARRIER, w/PINION and WASHER, Frt., Planet Pinion w/225,318,360 and MMC DIESEL Eng.
	4028 120	1		w/400,440,446 and 360 High Perf. Eng.
3	1942 081	1		WASHER, Frt. Carrier Thrust, w/3 Tabs, 3-13/32" O.D., w/225,318,360 and MMC DIESEL Eng.
	2801 060	1		w/4 Tabs, 3-13/32" O.D., w/400,440,446 and 360 High Perf. Eng.
4	2892 656	1	All	GEAR w/SUPPORT, Frt. Annulus, 2-1/2" I.D. Center Hole
5	1942 081	1	All	WASHER, Sun Gear Driving Shell Thrust, w/3 Outside Tabs
6	1736 521	1	All	RING, Sun Gear Driving Shell Lock
7	2801 311	1	All	GEAR w/BUSHING, Sun
8	2400 662	1	All	SHELL, Sun Gear Driving
9	4106 594	1	B-D-AD-RD-M	SHAFT PACKAGE, Output Consists of: Output Shaft, Thrust Washer, Thrust Plate w/Long Extension
	4106 595	1	D-RD-CB-MB-M	w/Short Extension
	4106 597	1	W-AW	w/Adapter, W1,2,3,4-AW1 - 1978-79
	4130 677	1	W-AW	1980-81
	4106 596	1	M3-4-5-6	w/Inter Extension
	4058 946	1	All	PLATE, Output Shaft Thrust .030" Thk.
10	2400 843	1	All	WASHER, Output Shaft Thrust, 1-5/64" O.D., .062" Thk.
	3681 688	1	All	w/Three Point, Bronze Face .062" Thk.
11	1942 080	1	All	PLATE, Sun Gear Driving Shell Thrust, w/4 Inside Tongs
12	1736 521	1	All	RING, Sun Gear Driving Shell Lock
13	1942 081	1		WASHER, Carrier Thrust, Rear, w/225,318,360 and MMC DIESEL Eng.
	2801 060	1		w/400,440,446 Eng.
14	2466 539	1		CARRIER, w/PINIONS, ROLLERS, RINGS, SHAFT, PIN and WASHERS, Rear Planet Pinion, w/225,318,360 and MMC DIESEL Eng.
	2801 061	1		w/400,440,446 Eng.
15	2400 580	1	All	PLATE, Rear Annulus Gear Thrust, w/31 Inside Teeth, 3-23/64" O.D.
16	2538 185	1	All	GEAR w/SUPPORT, Rear Annulus, 3-1/2" I.D., Center Hole
17	3515 451	1	All	DRUM, Reverse (Also Specify 1 of 3420100 Race Pkg.)
18	6024 666	AR	All	PIN, Frt. and Rr. Planet Pinion Shaft
19	2464 178	3		SHAFT, Frt. and Rr. Planet Pinion w/225,318,360 and MMC DIESEL Eng.
	2464 178	4		w/400,440,446 and 360 High Perf. Eng.
20				WASHER, Frt. and Rr. Planet Pinion,

LIGHT DUTY A = All Sport Utility (Ramcharger).

B = All Compact Models.

D = Conventional Cab.

DUTY CODES: AD = 2 Wheel Drive Only (Ramcharger).

CB-MB = Compact Front Section Only.

W = Conventional Cab 4 Wheel Drive.

AW = 4 Wheel Drive Only (Ramcharger).

P = Forward Control Chassis.

M = Motor Home.

MEDIUM-HEAVY CODES: XNT = Low Cab Forward. D = Conventional Cab. S = School Bus. W = 4-Wheel Drive.

AR=Use as Required

=New Part Number

Printed in U.S.A.

June, 1982

1978-81 LIGHT DUTY TRUCK PARTS CATALOG

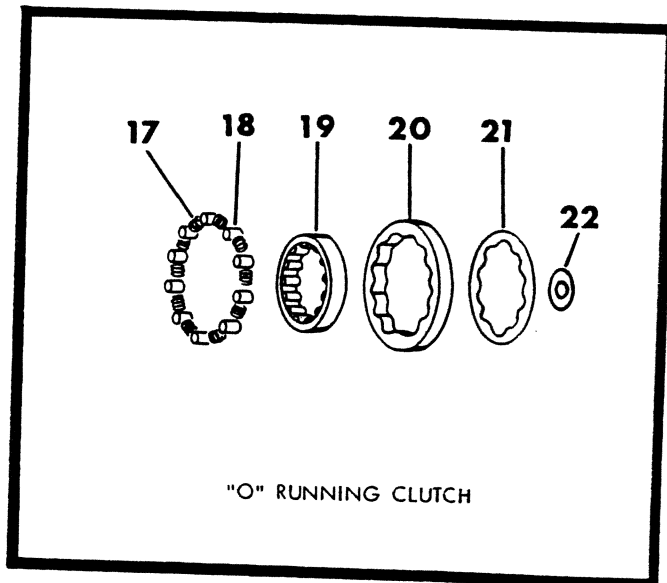
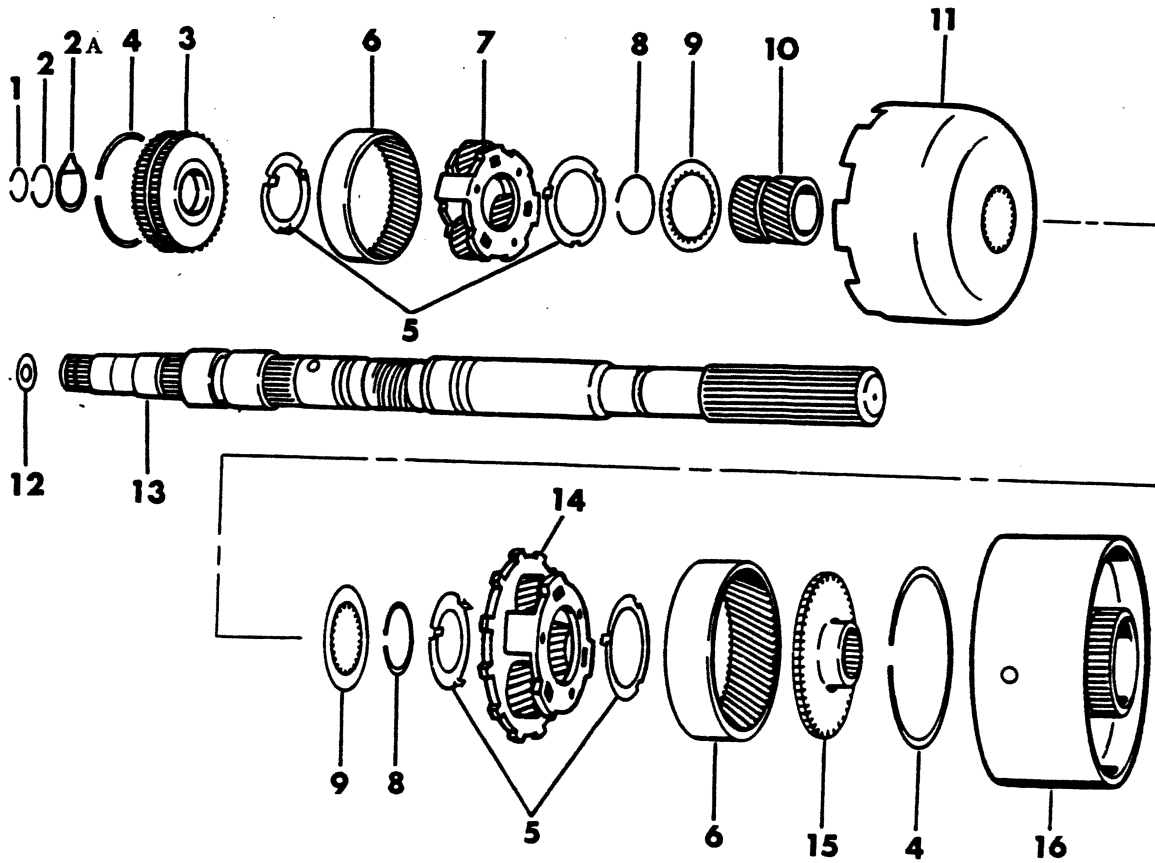
TRANSMISSION, AUTO.

ITEM	PART NUMBER	QTY	MODEL	DESCRIPTION
TRANSMISSION, 3 SPEED A727 AUTOMATIC GEAR TRAIN AND OUTPUT SHAFT B-D-W-AD-AW-RD-CB-MB-M				
	2801 315	6		w/225,318,360 and MMC DIESEL Eng.
	2801 315	8		w/400,440,446 and 360 High Perf. Eng.
21				RING, Frt. and Rr. Pinion Roller Thrust,
	2204 649	6		w/225,318,360 and MMC DIESEL Eng.
	2204 649	8		w/400,440,446 and 360 High Perf. Eng.
22				PINION, Frt. and Rr. Planet
	2400 667	3		w/225,318,360 and MMC DIESEL Eng.
	2400 667	4		w/400,440,446 and 360 High Perf. Eng.
23				ROLLER, Frt. and Rr. Pinion,
	2204 647	69		w/225,318,360 and MMC DIESEL Eng.
	2204 647	92		w/400,440,446 and 360 High Perf. Eng.
24	1942 187	12	All	SPRING, "O" Running Clutch Roller
25	2808 673	1	All	ROLLER and SPRING PACKAGE, "O" Running Clutch
26	3420 100	1	All	RACE, ROLLER and SPRING PACKAGE, "O" Running Clutch, 28 Teeth
27	1942 095	1	All	CAM, "O" Running Clutch
28	2801 426	1	All	RETAINER, "O" Running Clutch Spring
	139 324	1	All	SET SCREW, Cam Retaining 1/4-20 x 5/16"

LIGHT	A = All Sport Utility (Ramcharger).	B = All Compact Models.	D = Conventional Cab.
DUTY	AD = 2 Wheel Drive Only (Ramcharger).	CB-MB = Compact Front Section Only.	W = Conventional Cab 4 Wheel Drive.
CODES:	AW = 4 Wheel Drive Only (Ramcharger).	P = Forward Control Chassis.	M = Motor Home.

MEDIUM-HEAVY CODES: XNT = Low Cab Forward. D = Conventional Cab. S = School Bus. W = 4-Wheel Drive.

TRANSMISSION, 3 SPEED A904-A999 AUTOMATIC
GEAR TRAIN AND OUTPUT SHAFT
B-D



ITEM	PART NUMBER	QTY	MODEL	DESCRIPTION
TRANSMISSION, 3 SPEED A904-A999 AUTOMATIC GEAR TRAIN AND OUTPUT SHAFT B-D				
	3420 023	1		RACE, ROLLER and SPRING PACKAGE, "O" Running Cl.
				Consists Of :
				1 - Race, "O" Running Clutch
				10 - 2464888 Roller, "O" Running Clutch
				10 - 2464446 Spring, "O" Running Clutch
	3780 221	1		CAM, RETAINER, SCREW and WASHER PACKAGE, "O" RUNNING CLUTCH
				Consists Of :
				1 - RETAINER, "O" Running Clutch Spring
				1 - CAM, "O" Running Clutch
				7 - SCREW, "O" Running Clutch Cam
				7 - 1559489 WASHER, "O" Running Clutch Screw
1	6026 289	AR	All	SNAP RING, Output Shaft, .946" I.D., .040" Thk.
	6030 938	AR	All	.910" I.D., .062" Thk., Green
	6030 404	AR	All	.906" I.D., .084" Thk., White
2	6030 576	1	All	SNAP RING, Frt. Annulus Gear Support
2A	3681 969	1	All	WASHER, Frt. Annulus Gear Support, Thrust w/Lip, Steel Backed Bronze 2-1/8" O.D.
3	4130 510	1	All	SUPPORT w/BUSHING, Frt. Annulus Gear
	6030 576	1	All	SNAP RING, Frt.
4	1942 444	1	All	SNAP RING, Rr. Annulus Gear, 4-3/64" O.D.
	4130 513	1	All	Front
5	3681 935	2	All	WASHER, Rr. Planet Pinion Carrier Thrust, 2" I.D., w/4 Tabs
	4130 518	2	All	Front, w/3 Tabs
6	3743 184	1	All	GEAR, Rear Annulus
	4130 512	1	All	Front, Annulus
7	4130 514	1	All	CARRIER, w/PINIONS, SHAFTS, ROLLERS, RINGS, PINS and WASHERS, Frt. Planet Pinion
	3681 949	AR	All	RING, Frt. and Rr. Planet Pinion Roller Thrust
8	1942 439	1	All	LOCK RING, Sun Gear Driving Shell, 1-41/64" O.D.
9	4130 600	2	All	PLATE, Sun Gear Driving Shell, Thrust
10	4130 685	1	All	GEAR w/BUSHING, Sun
	4130 736	1	All	SPACER, Sun Gear, 4 Inner Teeth, 2" O.D.
11	4130 509	1	All	SHELL, Sun Gear Driving
12	4130 077	AR	All	WASHER, Output Shaft Thrust, 7/8" O.D., .052" Thk. Steel Backed. Bronze
	4130 078	AR	All	.068" Thk.
	4130 079	AR	All	.083" Thk.
13	4186 093	1	All	SHAFT w/PLUG, Output
	4130 088	1	All	PLUG, Output Shaft
	3410 465	1	All	BEARING, Output Shaft (Refer To Illus. 500)
	6029 675	1	All	SNAP RING, Bearing, 1-37/64" O.D. (Refer To Illus. 500)
	2400 185	1	All	Bearing, Outer (Refer To Illus. 500)
14	3681 988	1	All	CARRIER, w/PINIONS, SHAFTS, ROLLERS and WASHERS, Rr. Planet Pinion
15	3515 501	1	All	SUPPORT, Rr. Annulus Gear, 62T, 28T, 4" O.D.
16	4130 867	1	All	DRUM, Reverse
17	2464 446	10	All	SPRING, "O" Running Clutch Roller
18	2464 888	10	All	ROLLER, "O" Running Clutch

LIGHT A = All Sport Utility (Ramcharger).

B = All Compact Models.

D = Conventional Cab.

DUTY AD = 2 Wheel Drive Only (Ramcharger).

CB-MB = Compact Front Section Only.

W = Conventional Cab 4 Wheel Drive.

CODES: AW = 4 Wheel Drive Only (Ramcharger).

P = Forward Control Chassis.

M = Motor Home.

MEDIUM-HEAVY CODES: XNT = Low Cab Forward. D = Conventional Cab. S = School Bus. W = 4-Wheel Drive.

AR = Use as Required

= New Part Number

Printed in U.S.A.

June, 1982

1978-81 LIGHT DUTY TRUCK PARTS CATALOG

TRANSMISSION, AUTO.

ITEM	PART NUMBER	QTY	MODEL	DESCRIPTION
------	-------------	-----	-------	-------------

**TRANSMISSION, 3 SPEED A904-A999 AUTOMATIC
 GEAR TRAIN AND OUTPUT SHAFT
 B-D**

19	3420 023	1	All	RACE, ROLLER and SPRING PACKAGE, "O" Running Clutch
20	3780 221	1	All	CAM, RETAINER, SCREW and WASHER PACKAGE, "O" Running Clutch
21		1	All	RETAINER, (Serviced in 3780221 Package)
22	1559 489	7	All	WASHER, "O" Running Clutch Cam Screw 7/16" O.D.

LIGHT	A = All Sport Utility (Ramcharger).	B = All Compact Models.	D = Conventional Cab.
DUTY	AD = 2 Wheel Drive Only (Ramcharger).	CB-MB = Compact Front Section Only.	W = Conventional Cab 4 Wheel Drive.
CODES:	AW = 4 Wheel Drive Only (Ramcharger).	P = Forward Control Chassis.	M = Motor Home.
MEDIUM-HEAVY CODES:	XNT = Low Cab Forward.	D = Conventional Cab.	S = School Bus. W = 4-Wheel Drive.

AR=Use as Required

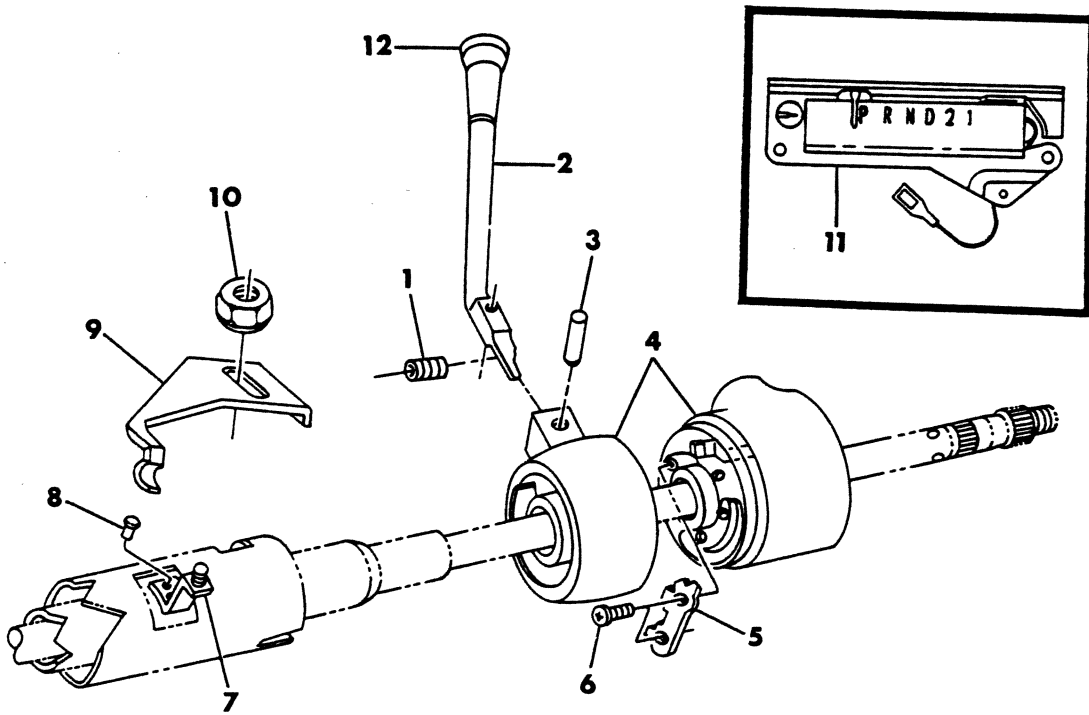
= New Part Number

Printed in U.S.A.

June, 1982

GEARSHIFT CONTROLS, STEERING COLUMN SHIFT
A727-A904-A999, B1,2,3-MB2-CB-MB3,4

8351 900B



ITEM	PART NUMBER	QTY	MODEL	DESCRIPTION
GEARSHIFT CONTROLS, STEERING COLUMN SHIFT				
A727-A904-A999, B1,2,3-MB2-CB-MB3,4				
1	2996 786	1	All	SPRING, G/Shift Lever
2	4019 292	1	All	LEVER w/KNOB, Column G/Shift, UP TO 10-1-80 WARREN BUILT
	4019 292	1	All	UP TO 10-13-80 PILLETE BUILT
	4188 570	1	All	AFTER 10-1-80 WARREN BUILT
	4188 570	1	All	AFTER 10-13-80 PILLETE BUILT
3	9412 281	1	All	PIN, Lever 1/4" x 1"
	125 735	1	All	SCREW, Lever Set 1/4-20 x 3/8" (Not Shown)
4				HOUSING, (Refer to Group 19)
5	3748 393	1	All	GATE, Lever, UP TO 10-1-80 WARREN BUILT
	3748 393	1	All	UP TO 10-13-80 PILLETE BUILT
	4188 572	1	All	AFTER 10-1-80 WARREN BUILT
	4188 572	1	All	AFTER 10-13-80 PILLETE BUILT
6		2	All	SCREW, Gate 12-24 x 7/8"
7	3467 176	1	All	BRACKET, Indicator Brkt.
8	6027 976	2	All	RIVET, Bracket
9	4034 476	1	All	BRACKET, Indicator Adjusting
10	152 442	1	All	NUT, Brkt. Adjusting
11	4075 049	1	All	SHIFT INDICATOR ASSY. (Also Shown in Instrument Cluster) - 1978
	4075 101	1	All	1979-80
	4075 237	1	All	1981
12	2883 402	1	All	KNOB, G/Shift Lever

LIGHT	A = All Sport Utility (Ramcharger).	B = All Compact Models.	D = Conventional Cab.
DUTY	AD = 2 Wheel Drive Only (Ramcharger).	CB-MB = Compact Front Section Only.	W = Conventional Cab 4 Wheel Drive.
CODES:	AW = 4 Wheel Drive Only (Ramcharger).	P = Forward Control Chassis.	M = Motor Home.
MEDIUM-HEAVY CODES: XNT = Low Cab Forward. D = Conventional Cab. S = School Bus. W = 4-Wheel Drive.			

AR=Use as Required

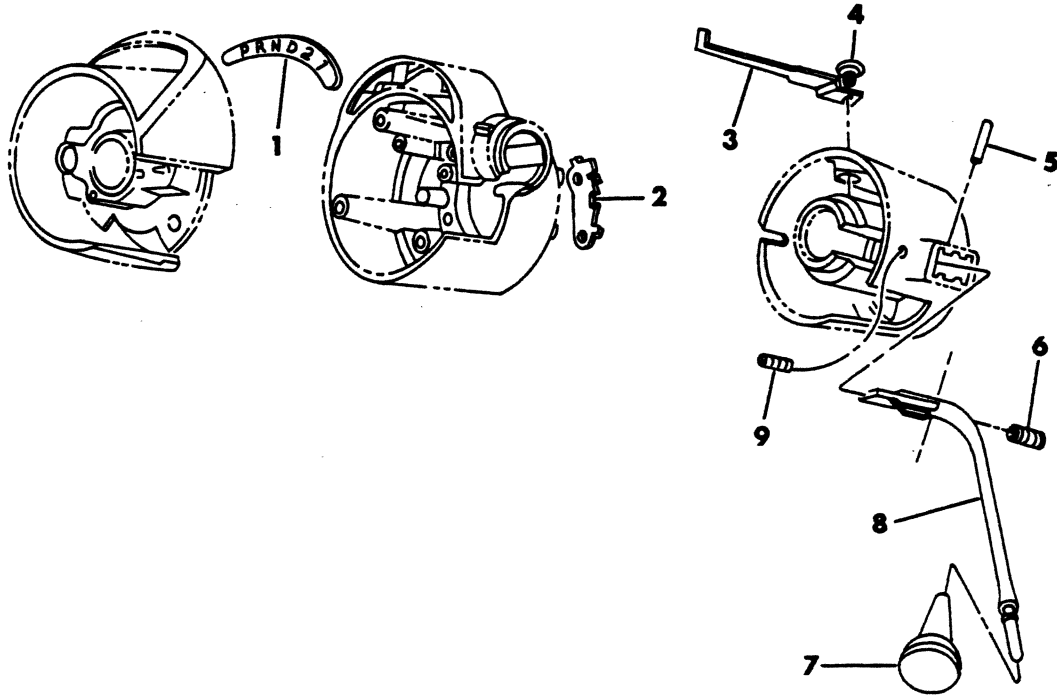
= New Part Number

Printed in U.S.A.

June, 1982

8351 1000

GEARSHIFT CONTROLS, STEERING COLUMN SHIFT, WITH
AND WITHOUT TILT STEERING COLUMN A727-A904-A999
B-CB-MB-D-W-RD-AD-AW1,2,3,4



ITEM	PART NUMBER	QTY	MODEL	DESCRIPTION
GEARSHIFT CONTROLS, STEERING COLUMN SHIFT, WITH AND WITHOUT TILT STEERING COLUMN A727-A904-A999 B-CB-MB-D-W-RD-AD-AW1,2,3,4				
1	3746 921	1	D-W-AD-AW-RD	LENS AND BACK, w/Dial - 1978-79-80
	4075 148	1	D-W-AD-AW-RD	SHIFT INDICATOR ASSY. - 1981 (Not Shown)
	4164 408	1	D-W-AD-AW-RD	BRACKET, G/Shift Tube Indicator - 1981 (Not Shown)
	6027 976	2	D-W-AD-AW-RD	RIVET, Bracket Mtg. - 1981 (Not Shown)
	3488 663	1	D-W-AD-AW-RD	LAMP ASSY., G/Shift Selector Indicator (Not Shown) - 1978-79-80
	9417 561	1	D-W-AD-AW-RD	BULB, Indicator Lamp, Except T/S Wheel - 1978-79-80
2	3748 393	1	All	GATE, Lever, Except T/S Wheel, UP TO 10-1-80 WARREN BUILT
	3748 393	1	All	UP TO 10-13-80 PILLETE BUILT
	4188 572	1	All	AFTER 10-1-80 WARREN BUILT
	4188 572	1	All	AFTER 10-13-80 PILLETE BUILT
	3748 497	1		w/Tilt Steering Wheel
3	3748 623	1	D-W-AD-AW-RD	POINTER, Dial - 1978-79-80
4	6029 626	1	D-W-AD-AW-RD	SCREW, Pointer - 1978-79-80
5	9412 281	1		PIN, Lever 1/4" x 1", Except Tilt Steering Wheel
	152 233	1		3/16 x 7/8", w/Tilt Steering Wheel
6	2996 786	1		SPRING, Lever, Except Tilt Steering Wheel
	2880 284	1		w/Tilt Steering Wheel
7	2883 402	1		KNOB, G/Shift Lever, Except 15" Tuff, Steering Wheel
	3575 242	1		w/15" Tuff, Steering Wheel
8	4019 292	1	All	LEVER w/KNOB, Column G/Shift, Except Tilt Steering Wheel, w/15" Tuff, Steering Wheel, UP TO 10-1-80 WARREN BUILT
	4019 292	1	All	UP TO 10-13-80 PILLETE BUILT
	4188 570	1	All	AFTER 10-1-80 WARREN BUILT
	4188 570	1	All	AFTER 10-13-80 PILLETE BUILT
	3496 881	1		w/16-1/2" Steering Wheel
	3748 456	1		w/Tilt Steering Wheel - 1978-79-80
	4188 197	1		1981
9	125 735	1		SCREW, Lever Set 1/4-20 x 3/8"
	6031 288	1		1/4-20 x 1/2"

LIGHT	A = All Sport Utility (Ramcharger).	B = All Compact Models.	D = Conventional Cab.
DUTY	AD = 2 Wheel Drive Only (Ramcharger).	CB-MB = Compact Front Section Only.	W = Conventional Cab 4 Wheel Drive.
CODES:	AW = 4 Wheel Drive Only (Ramcharger).	P = Forward Control Chassis.	M = Motor Home.

MEDIUM-HEAVY CODES: XNT = Low Cab Forward. D = Conventional Cab. S = School Bus. W = 4-Wheel Drive.

AR=Use as Required

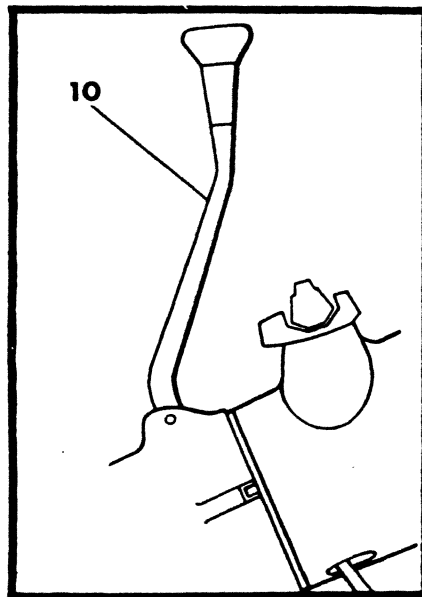
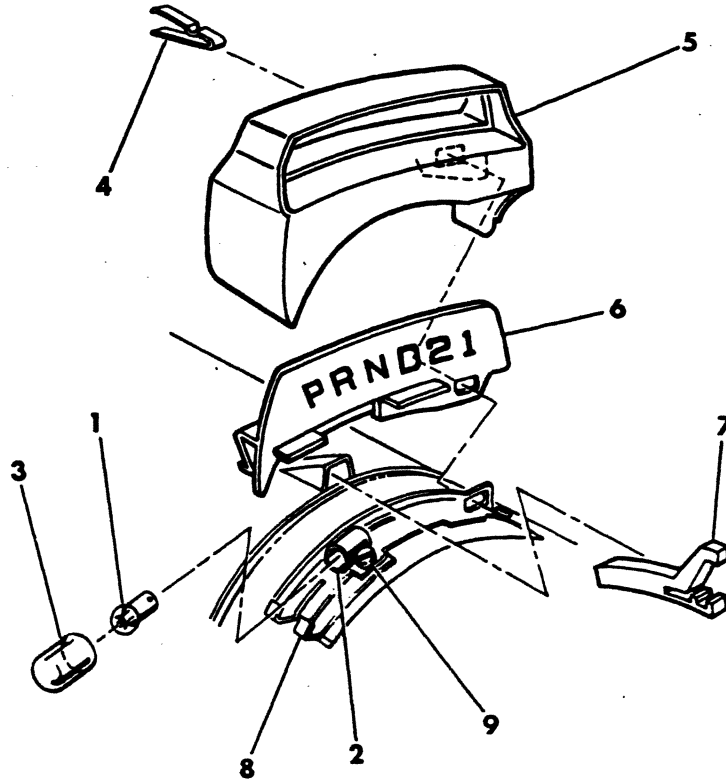
= New Part Number

Printed in U.S.A.

June, 1982

GEARSHIFT INDICATOR, WITH TILT STEERING COLUMN,
A727, D1,2,3,4 - W1,2,3,4 - AD-AW1

8351 1100A



ITEM	PART NUMBER	QTY	MODEL	DESCRIPTION
GEARSHIFT INDICATOR, WITH TILT STEERING COLUMN, A727, D1,2,3,4 - W1,2,3,4 - AD-AW1				
1	273 987	1	All	BULB - 1978-79-80
2	3488 376	1	All	LAMP AND WIRE ASSY. - 1978-79-80
3	3747 188	1	All	DIFFUSER, Lens Lamp - 1978-79
	4048 039	1	All	1980
4	3488 161	1	All	CLIP, Retainer - 1978-79-80
5	P626 MX9	1	All	RETAINER, Lens - 1978-79-80
6	3747 137	1	All	LENS, w/Shift Pattern - 1978-79-80
7	3488 160	1	All	POINTER, G/Shift Dial - 1978-79-80
8	3488 375	1	All	BRACKET, Lens Retaining - 1978-79-80
9	9428 682	2		SCREW, Bracket - 1978-79-80
10				LEVER, Column G/Shift (See Prev. Illus.)
	4075 148	1	All	SHIFT INDICATOR ASSY. - 1981
	4164 408	1	All	BRACKET, G/Shift Tube Indicator - 1981
	6027 976	2	All	RIVET, Brkt. Mtg. - 1981

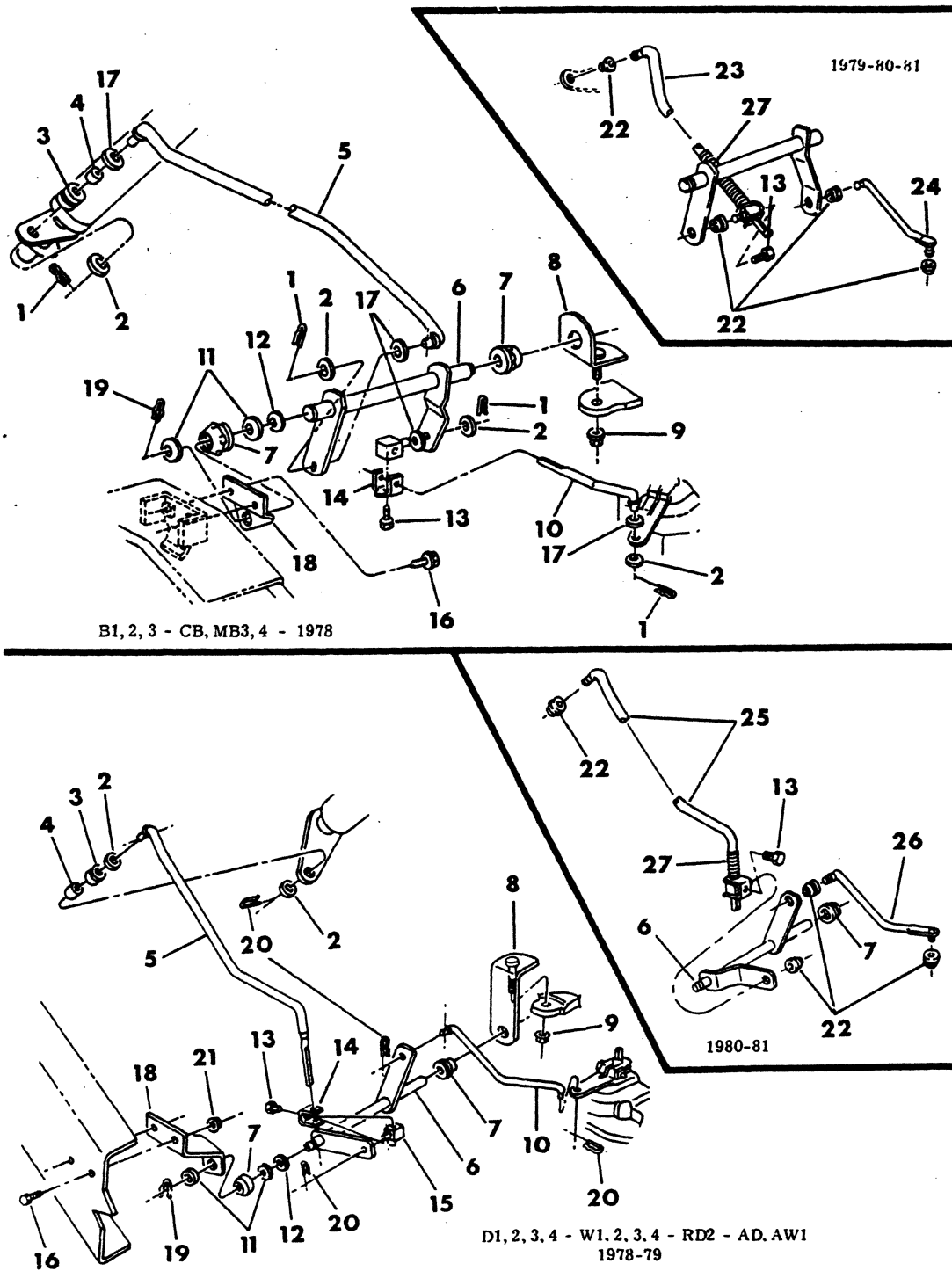
LIGHT	A = All Sport Utility (Ramcharger).	B = All Compact Models.	D = Conventional Cab.
DUTY	AD = 2 Wheel Drive Only (Ramcharger).	CB-MB = Compact Front Section Only.	W = Conventional Cab 4 Wheel Drive.
CODES:	AW = 4 Wheel Drive Only (Ramcharger).	P = Forward Control Chassis.	M = Motor Home.

MEDIUM-HEAVY CODES: XNT = Low Cab Forward. D = Conventional Cab. S = School Bus. W = 4-Wheel Drive.

AR=Use as Required # = New Part Number Printed in U.S.A. June, 1982

GEARSHIFT CONTROLS, A727-A904-A999 AUTOMATIC TRANS MISSION, B-D-W-AD-AW-RD-CB-MB

8351 1150B



ITEM	PART NUMBER	QTY	MODEL	DESCRIPTION
GEARSHIFT CONTROLS, A727-A904-A999 AUTOMATIC TRANS MISSION, B-D-W-AD-AW-RD-CB-MB				
1	6025 867	4	B-CB-MB	CLIP, Rod Retaining Hair Pin
2	6027 467	AR	All	WASHER, Rod Retaining, Plain
3	1553 304	1	All	GROMMET, Control Rod - 1978
	1553 304	1	D-W-AD-AW-RD	1979
4	1553 305	1	All	BUSHING, Control Rod, Front - 1978
	1553 305	1	D-W-AD-AW-RD	1979
5	4088 031	1	B-CB-MB	ROD, G/Shift Control, Front - 1978
	3893 703	1	D-W-AD-AW-RD	1978-79
6	2960 412	1	B-CB-MB	SHAFT w/LEVERS, Torque - 1978
	4115 678	1	B-CB-MB	w/225,318,360 Eng. - 1979-80-81
	4115 679	1	MB	w/440 Eng. - 1979
	3638 110	1	D-W-AD-AW-RD	All 1978, 1979 Exc. D-W3
	4112 239	1	D-W3	1979
	4117 639	1	D-W-AD-AW-RD	1980-81
7	3467 800	2	All	BUSHING, Torque Shaft
8	2534 513	1	B-CB-MB	BRACKET, Torque Shaft Mtg., Trans. End, A727 Trans.
	4112 222	1	B	w/A904,A999 Trans.
	3497 025	1	D-W-AD-AW-RD	w/A727 Trans.
	4112 262	1	D	w/A904,A999 Trans.
9	6028 114	1	All	NUT, Bracket Mtg. Lock 7/16-14
10	4088 032	1	B-CB-MB	ROD, G/Shift Control, Rear - 1978
	3820 663	1	D-W-AD-AW-RD	1978-79
11	9417 098	2	All	WASHER, Rod Retaining, Plain
12	905 206	1	All	WASHER, Rod Retaining, Spring
13	181 082	1	All	SCREW, 5/16-18 x 1/2"
14	2204 274	1	All	CLAMP, Control Rod
15	2467 935	1	All	SWIVEL, Control Rod - 1978
	3575 334	1	B-CB-MB	1979
	2467 935	1	D-W-AD-AW-RD	1979
	3575 334	1	All	1980-81
16	181 112	2	All	SCREW, Brkt. Mtg. 3/8-16 x 1"
17	2072 643	AR	B-CB-MB	WASHER, Rod and Shaft Retaining, Spring
18	2960 021	1	B-CB-MB	BRACKET, Torque Shaft, Frame End - 1978
	4115 683	1	B-CB-MB	1979-80-81
	3893 788	1	D-W-AD-AW-RD	All w/o Frame Reinf., Except D-W3
	4112 238	1	D-W3	w/Frame Reinf.
	180 122	2	B-CB-MB	SCREW w/Wa., Ext. Brkt., 3/8-16 x 1"
19	148 150	1	All	RETAINER, Torque Shaft, Spring
20	6027 983	4	D-W-AD-AW-RD	CLIP, Rod Retaining Hair Pin
21	6025 020	2	All	NUT, Brkt. Mounting Screw
22	3575 333	4	B-CB-MB	GROMMET, Control Rod, Frt. and Rr. - 1979-80-81
	3575 333	4	D-W-AD-AW-RD	1980-81
23	4115 677	1	B-CB-MB	ROD, G/Shift Control, Front - 1979-80-81
24	4115 682	1	B-CB-MB	ROD, G/Shift Control, Rear - 1979-80-81
25	4116 419	1	D-W-AD-AW-RD	ROD, G/Shift Control, Front - 1980-81
26	4116 420	1	D-W-AD-AW-RD	ROD, G/Shift Control Rear - 1980-81
27	3575 354	1	B-CB-MB	SPRING, Control Rod Adjusting - 1979-80-81
	3575 354	1	D-W-AD-AW-RD	1980-81

LIGHT A = All Sport Utility (Ramcharger).

B = All Compact Models.

D = Conventional Cab.

DUTY AD = 2 Wheel Drive Only (Ramcharger).

CB-MB = Compact Front Section Only.

W = Conventional Cab 4 Wheel Drive.

CODES: AW = 4 Wheel Drive Only (Ramcharger).

P = Forward Control Chassis.

M = Motor Home.

MEDIUM-HEAVY CODES: XNT = Low Cab Forward. D = Conventional Cab. S = School Bus. W = 4-Wheel Drive.

AR=Use as Required

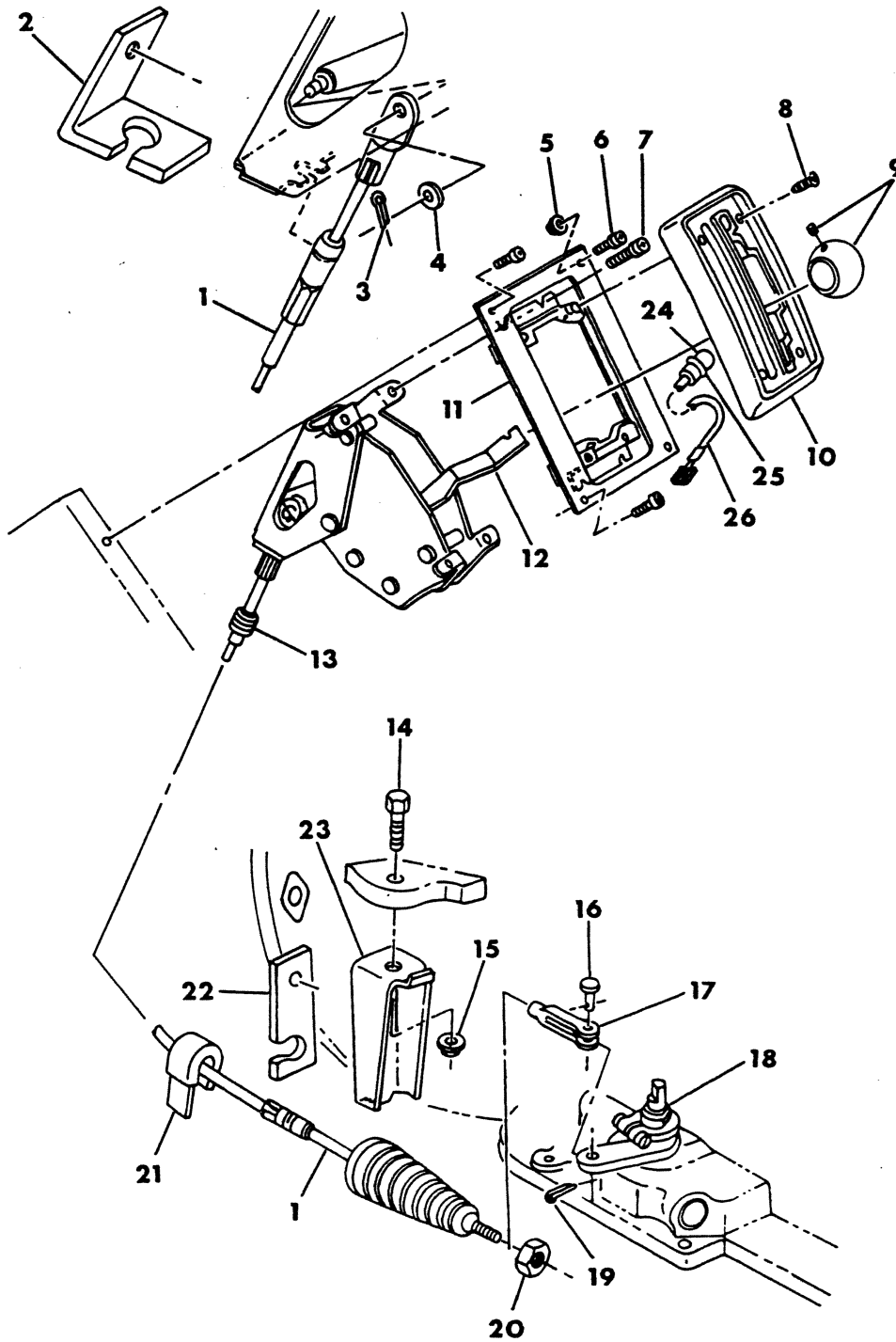
=New Part Number

Printed in U.S.A.

June, 1982

GEARSHIFT CONTROLS, MOTOR HOME - A727 M3,4,5,6

8351 1200A



ITEM	PART NUMBER	QTY	MODEL	DESCRIPTION
GEARSHIFT CONTROLS, MOTOR HOME - A727				
M3,4,5,6				
1	3641 309	1	All	CABLE, G/Shift, 102" Long
2				CLIP, Anchor (Not Serviced)
3	6023 285	1	All	CLIP, Hair Pin
4				WASHER, (Not Serviced)
5	6025 001	4	All	NUT, 10-24
6	2952 975	4	All	SCREW, 10-24 x 1/2"
7	152 748	4	All	SCREW, 10-24 x 1/2"
8	6029 716	4	All	SCREW, 6-32 x 1-1/2"
9	2908 376	1	All	KNOB w/SET SCREW, G/Shift Lever
	140 874	1	All	SET SCREW, Hex Socket 10-24 x 5/8"
10	3634 737	1	All	BEZEL, Support
11	2515 800	1	All	SUPPORT, Actuator
12	3821 623	1	All	ACTUATOR
13	9426 731	1	All	GROMMET, G/Shift Cable
14	182 776	1	All	BOLT, 1/2"-20 x 1-1/4"
15	6029 335	1	All	NUT, 1/2"-20
16		1		PIN, Clevis 3/16" x 1/2" (Not Serviced)
17	116 533	1	All	CLEVIS, 1-9/16" O.V.L., 10-32 Thread
18	2513 936	1	All	LEVER, Manual Shift
19				PIN, Cotter (Not Serviced)
20	120 614	1	All	NUT, Cable Adjusting 10-32
21	1302 783	1	All	CLIP, Cable Holding
22				CLIP, Anchor Lwr. (Not Serviced)
23	3821 047	1	All	BRACKET, Cable Anchor
24	127 934	1	All	BULB, Selector Bezel
25	2097 003	1	All	SOCKET, Bulb
26				CABLE, Bulb Socket, Serviced in Cab Wiring, or Make Up as Required

LIGHT A = All Sport Utility (Ramcharger).

B = All Compact Models.

D = Conventional Cab.

DUTY AD = 2 Wheel Drive Only (Ramcharger).

CB-MB = Compact Front Section Only.

W = Conventional Cab 4 Wheel Drive.

CODES: AW = 4 Wheel Drive Only (Ramcharger).

P = Forward Control Chassis.

M = Motor Home.

MEDIUM-HEAVY CODES: XNT = Low Cab Forward. D = Conventional Cab. S = School Bus. W = 4-Wheel Drive.

AR=Use as Required

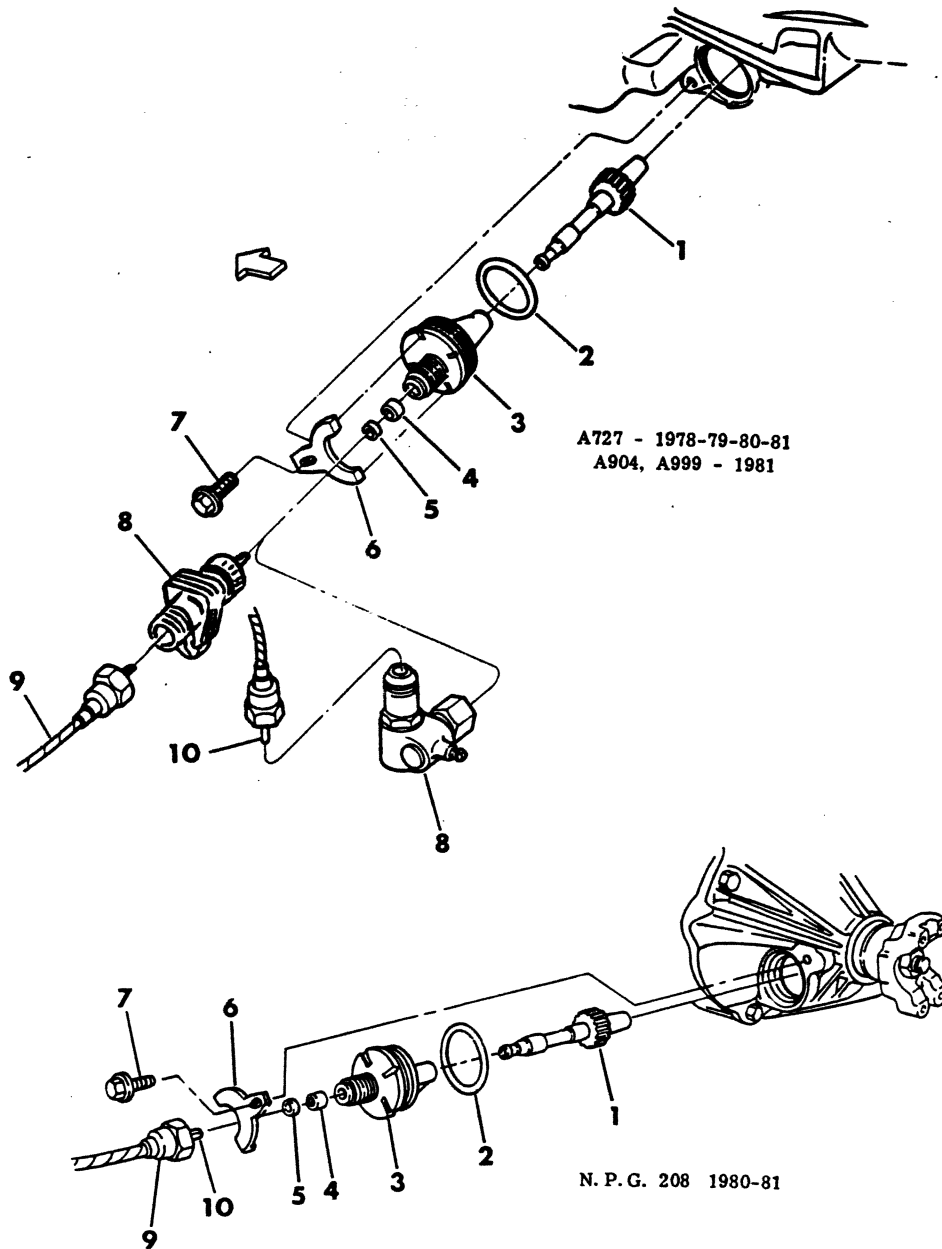
=New Part Number

Printed in U.S.A.

June, 1982

8351 1300D

SPEEDOMETER CABLE, ADAPTER & PINION
B-CB-MB-D-AD-RD (W1,2-AW1 w/208 TRANSFER CASE)



ITEM	PART NUMBER	QTY	MODEL	DESCRIPTION
SPEEDOMETER CABLE, ADAPTER & PINION B-CB-MB-D-AD-RD (W1,2-AW1 w/208 TRANSFER CASE)				
	4057 046	1		REPAIR PACKAGE, SPEEDO. PINION SMALL PARTS Consists Off: 1 - 4058156 RETAINER, Speedo. Cable 1 - 6025752 "O" RING, Retainer Outer 1 - 2538571 RING, Retainer Inner 1 - 2538588 SEAL, Retainer Inner 1 - 4057047 SEAL, Pinion
1			All	PINION, A727,A904,A999 Trans., N.P.G. 208 Transfer Case (See Chart, Illus. No. 1400D)
2	6025 752	1	All	"O" RING, Retainer, Outer (Serv. in 4057046 Pkg.)
	6031 370	1	All	"O" RING, Retainer
3	2538 608	1	All	RETAINER, Except 3410024 and 3410025 Pinion
	2892 994	1	All	Use w/3410024 and 3410025 Pinion
4	2538 588	1	All	SEAL, Retainer, Inner (Serv. in 4057046 Pkg.)
5	2538 571	1	All	RING, Retainer, Inner (Serv. in 4057046 Pkg.)
6	2892 399	1	All	CLAMP, Pinion Retainer
7	181 086	1	All	SCREW, 5/16 x 3/4"
8	2235 626	1	D,RD	ADAPTER, 2235626(B) .6944 to 1 Ratio
	1933 049	1		1933049(A) .8797 to 1 Ratio (Serviced by Stewart Warner)
	3895 093	1	B-CB	ADAPTER, Cata. Converter, 90 Degree
9	4114 401	1	D-AD-RD	SPEEDOMETER CABLE, w/SHAFT and HOUSING, Speedo. to Trans., 60" Long - 1978-79-80
	4216 627	1	D-AD-RD	1981
	4114 403	1	W1,2-AW1	80" Long, w/208 T/Case - 1980
	4216 629	1	W1,2-AW1	1981
	4114 414	1	B-CB-MB	90" Long Cable w/Bracket
	4114 567	1	D3,4-RD	Speedometer to E.G.R. Switch, 26" Long - 1979-80
	4114 784	1	D3	17" Long - 1979-80
	4114 784	1	D2	17" Long, w/360 4-BBL - 1980
	4114 783	1	D3	E.G.R. Switch to Servo., 7-1/2" Long - 1979-80
	4114 569	1	D3,4-RD	E.G.R. Switch to Trans., 35" Long - 1979-80
	4085 997	1	B3-CB-MB	Speedo. to E.G.R. Switch, w/Hvy. Duty Cyc. Eng. 26" Long - 1979-80
	4114 126	1	B3-CB-MB	E.G.R. Switch to Servo, w/Hvy. Duty Cyc. Eng., 64" Long - 1979-80
	4085 998	1	B3-CB-MB	E.G.R. Switch to Trans., w/Hvy. Duty Cyc. Eng., 64" Long - 1979-80
	4085 997	1	B-MB	Speedo. to Trip Computer, w/o Auto Speed Control, 26" Long - 1979-80-81
	4162 670	1	B-MB	Speedo. to Trip Computer, w/Auto. Speed Control, 28 1/2" Long, Up To 2-11-1980
	4162 779	1	B-MB	30 1/2" Long, After 2-11-1980-81
	4114 784	1	A-D-W	Speedo. to Trip Computer, w/Auto. Speed Control, 17" Long
	4114 567	1	A-D-W	Speedo. to Trip Computer, w/o Auto. Speed Control, 26" Long
	4085 999	1	B	Trip Computer to Trans., w/Cata. Converter, 64" Long - 1979-80-81
	4085 998	1	B-MB	Trip Computer to Trans., w/o Cata. Converter, 64" Long - 1979-80-81
	4114 569	1	D-AD	Trip Computer to Trans., w/o Auto. Speed Control, 35" Long
	4085 999	1	W1,2-AW	Trip Computer to T/Case, w/o Auto. Speed Control, 64" Long
	4114 412	1	B-CB-MB	Speedo. to Servo, 90" Long - 1978-79
	4162 666	1	B-CB-MB	Speedo. to Servo, 36" Long - 1980-81
	4114 408	1	A-D-W	Speedo. to Servo, 29 1/2" Long - 1978-79-80
	4216 626	1	A-D-W	1981

LIGHT DUTY A = All Sport Utility (Ramcharger). B = All Compact Models. D = Conventional Cab.
AD = 2 Wheel Drive Only (Ramcharger). CB-MB = Compact Front Section Only. W = Conventional Cab 4 Wheel Drive.
CODES: AW = 4 Wheel Drive Only (Ramcharger). P = Forward Control Chassis. M = Motor Home.

MEDIUM-HEAVY CODES: XNT = Low Cab Forward. D = Conventional Cab. S = School Bus. W = 4-Wheel Drive.

AR=Use as Required

= New Part Number

Printed in U.S.A.

June, 1982

1978-81 LIGHT DUTY TRUCK PARTS CATALOG

TRANSMISSION, AUTO.

ITEM	PART NUMBER	QTY	MODEL	DESCRIPTION
SPEEDOMETER CABLE, ADAPTER & PINION				
B-CB-MB-D-AD-RD (W1,2-AW1 w/208 TRANSFER CASE)				
	4114 126	1	B-MB	Trip Computer to Servo, 64" Long - 1979
	4162 667	1	B-MB	Trip Computer to Servo, 4 1/2" Long - 1980-81
	4114 783	1	A-D-W	Trip Computer to Servo, 7 1/2" Long
	4114 442	1	B-CB-MB	Servo to Trans., w/o Cata. Converter, 27" Long - 1978-79
	4114 413	1	B-CB	Servo to Trans., w/Cata. Converter, 12" Long - 1978-79
	4162 760	1	B-CB-MB	Servo to Trans., 89" Long, w/ and w/o Cata. Converter - 1980-81
	4114 409	1	D-AD	Servo to Trans., 50" Long
	4114 410	1	W1,2-AW	Servo to T/Case, 67" Long
10	2448 294	1	D-AD-RD	SHAFT, Cable Drive, 80" Long, Universal Shaft Pkg.
	2448 295	1	B-CB-MB	113" Long, Universal Shaft Pkg.
	2216 552	1	All	GROMMET, Speedo. Cable (Not Shown)
	3592 374	1	All	SLEEVE, Speedo. Cable Silencer
	3593 310	1	B-CB-MB	RETAINER, Cable to Speedo., Cable
	6015 377	AR	B-CB-MB	CLIP, Speedo. Cable (Not Shown)

LIGHT	A = All Sport Utility (Ramcharger).	B = All Compact Models.	D = Conventional Cab.
DUTY	AD = 2 Wheel Drive Only (Ramcharger).	CB-MB = Compact Front Section Only.	W = Conventional Cab 4 Wheel Drive.
CODES:	AW = 4 Wheel Drive Only (Ramcharger).	P = Forward Control Chassis.	M = Motor Home.

MEDIUM-HEAVY CODES: XNT = Low Cab Forward. D = Conventional Cab. S = School Bus. W = 4-Wheel Drive.

AR=Use as Required

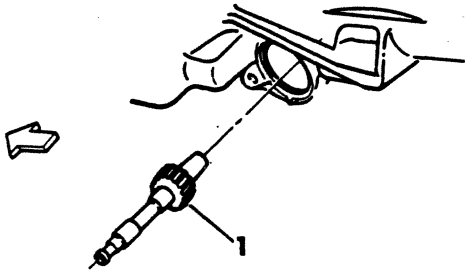
=New Part Number

Printed in U.S.A.

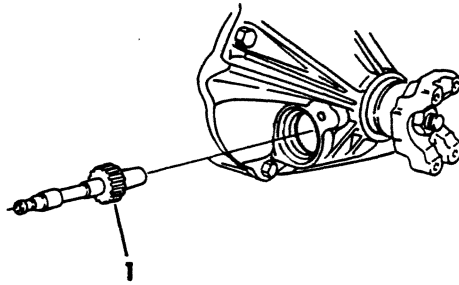
June, 1982

PINION CHART, SPEEDOMETER - A727 TRANS. - 1978-79

8351 1400D



A727 - 1978-79-80-81
A904, A999 - 1981



N. P. G. 208 1980-81

DESCRIPTION	REAR AXLE	AXLE RATIO	AXLE RATIO	AXLE RATIO	AXLE RATIO
-------------	-----------	------------	------------	------------	------------

PINION CHART, SPEEDOMETER - A727 TRANS. - 1978-79

REAR AXLE RATIO			2.71	2.94	3.21/3.23	3.54/3.55
TIRE SIZE	MATERIAL	TIRE TYPE				
H70-15	P & G	HWY	2538926		2538930	2538934
HR70-15	P & S	HWY		2538928	2538931	2538934
LR70-15	P & S	HWY		2538927	2538930	2538933
LR60-15	P & S	HWY		2538928	2538931	2538934
G78-15	P & G	HWY	2538926		2538931	2538934
GR78-15	P & G	HWY		2538929	2538931	2538934
7.00-15	NYLON	HWY	3410025		2538929	2538932
6.50-16	NYLON	HWY	3410025		2538929	2538932
7.00-16	NYLON	HWY	3410024			2538932
7.50-16	NYLON	HWY				2538931
8.00-16.5	NYLON	HWY	2538926			2538935
8.00R-16.5	NYL. or POLY	HWY				2538933
8.75-16.5	NYLON	HWY	3410025			2538933
8.75R-16.5	NYL. or POLY	HWY				2538932
9.50-16.5	NYLON	HWY	3410025			2538932
H78-15	P & G	HWY	2538926	2538928	2538930	2538933
E78-15	P & G	HWY	2538927		2538932	2538936
ER78-15	P & G	HWY		2538930	2538933	2538936
F78-15	P & G	HWY	2538927		2538932	2538935
FR78-15	P & G	HWY		2538929	2538932	2538935
8.00-16.5	POLYESTER	HWY	3410025		2538930	2538933
8.75-16.5	POLYESTER	HWY	3410025		2538929	2538932
HR78-15	P & S	HWY	2538926	2538928	2538931	2538934
L78-15	P & G	HWY	3410025	2538927	2538929	2538932
LR78-15	P & S	HWY	3410025	2538927	2538930	2538933
10-15	NYLON	HWY	3410024	2538926	2538929	2538932
9.50-16.5	POLYESTER	HWY	3410024		2538928	2538931
7.00-16	NYLON	MUD & SNOW	3410024		2538929	2538932
7.50-16	NYLON	MUD & SNOW	3410024		2538928	2538930
8.00-16.5	NYLON	MUD & SNOW	3410025		2538930	2538933
8.75-16.5	NYLON	MUD & SNOW	3410024		2538929	2538932
9.50-16.5	NYLON	MUD & SNOW	3410024		2538929	2538932
GR78-15	P & G	MUD & SNOW		2538928	2538931	2538934
HR78-15	P & G	MUD & SNOW		2538928	2538930	2538933
LR78-15	P & G	MUD & SNOW		2538927	2538929	2538932
REAR AXLE RATIO			3.90/3.91	4.10	4.56	4.88
TIRE SIZE	MATERIAL	TIRE TYPE				
G78-15	P & G	HWY	2538938			
7.00-15	NYLON	HWY	2538936			
7.00-16	NYLON	HWY		2538937	2538941	2538943
7.50-16	NYLON	HWY	2538935	2538936	2538940	2538942
8.00-16.5	NYLON	HWY	2538938	2538940	2538943	2538942(A)
8.75-16.5	NYLON	HWY	2538936	2538938		2538945

LIGHT DUTY CODES: A = All Sport Utility (Ramcharger). B = All Compact Models. D = Conventional Cab.
 AD = 2 Wheel Drive Only (Ramcharger). CB-MB = Compact Front Section Only. W = Conventional Cab 4 Wheel Drive.
 AW = 4 Wheel Drive Only (Ramcharger). P = Forward Control Chassis. M = Motor Home.

MEDIUM-HEAVY CODES: XNT = Low Cab Forward. D = Conventional Cab. S = School Bus. W = 4-Wheel Drive.

AR=Use as Required

= New Part Number

Printed in U.S.A.

June, 1982

1978-81 LIGHT DUTY TRUCK PARTS CATALOG

TRANSMISSION, AUTO.

DESCRIPTION	REAR AXLE	AXLE RATIO	AXLE RATIO	AXLE RATIO	AXLE RATIO
-------------	-----------	------------	------------	------------	------------

PINION CHART, SPEEDOMETER - A727 TRANS. - 1978-79

9.50-16.5	NYLON	HWY	2538935	2538937	2538945
H78-15	P & G	HWY	2538937	2538943	
E78-15	P & G	HWY	2538939	2538941	2538932(A)
F78-15	P & G	HWY	2538938	2538940	2538945
8.00-16.5	POLYESTER	HWY	2538937	2538938	2538942
8.75-16.5	POLYESTER	HWY	2538935	2538937	2538941
HR78-15	P & S	HWY	2538938	2538939	2538943
L78-15	P & G	HWY	2538936	2538937	2538941
LR78-15	P & S	HWY	2538937	2538938	2538942
10-15	NYLON	HWY	2538935	2538936	2538941
9.50-16.5	POLYESTER	HWY	2538934	2538936	2538940
7.00-16	NYLON	MUD & SNOW	2538935	2538936	2538941
7.50-16	NYLON	MUD & SNOW	2538934	2538935	2538939
8.00-16.5	NYLON	MUD & SNOW	2538936	2538938	2538943
8.75-16.5	NYLON	MUD & SNOW	2538935	2538937	2538941
9.50-16.5	NYLON	MUD & SNOW	2538935	2538936	2538941
9.50R-16.5	P & S	MUD & SNOW		2538935	

ADAPTERS

PART NO.	RATIO (See Ref. No. 8)
1933049(A)	.8794 to 1 Ratio
2235626(B)	.6944 to 1 Ratio

PINION, SPEEDOMETER

3410024 - 24 Th.	3410025 - 25 Th.
2538926 - 26 Th.	2538927 - 27 Th.
2538928 - 28 Th.	2538929 - 29 Th.
2538930 - 30 Th.	2538931 - 31 Th.
2538932 - 32 Th.	2538933 - 33 Th.
2538934 - 34 Th.	2538935 - 35 Th.
2538936 - 36 Th.	2538937 - 37 Th.
2538938 - 38 Th.	2538939 - 39 Th.
2538940 - 40 Th.	2538941 - 41 Th.
2538942 - 42 Th.	2538943 - 43 Th.
2538945 - 45 Th.	

LIGHT A = All Sport Utility (Ramcharger). B = All Compact Models. D = Conventional Cab.
DUTY AD = 2 Wheel Drive Only (Ramcharger). CB-MB = Compact Front Section Only. W = Conventional Cab 4 Wheel Drive.
CODES: AW = 4 Wheel Drive Only (Ramcharger). P = Forward Control Chassis. M = Motor Home.

MEDIUM-HEAVY CODES: XNT = Low Cab Forward. D = Conventional Cab. S = School Bus. W = 4-Wheel Drive.

AR=Use as Required

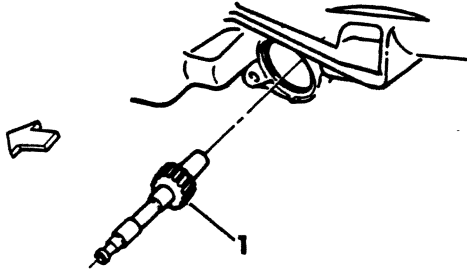
= New Part Number

Printed in U.S.A.

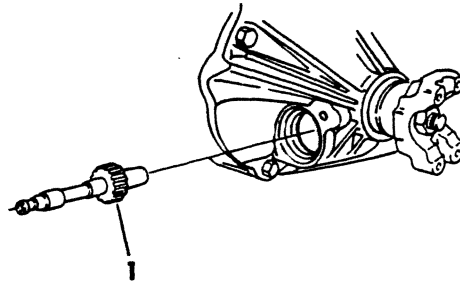
June, 1982

8351 1400D

**PINION CHART, SPEEDOMETER - A727,A904,A999 TRANS.
AND N.P.G. 208 TRANSFER CASE - 1980-81**



A727 - 1978-79-80-81
A904, A999 - 1981



N. P. G. 208 1980-81

DESCRIPTION	REAR AXLE	AXLE RATIO	AXLE RATIO	AXLE RATIO	AXLE RATIO
-------------	-----------	------------	------------	------------	------------

**PINION CHART, SPEEDOMETER - A727,A904,A999 TRANS.
AND N.P.G. 208 TRANSFER CASE - 1980-81**

NOTE: Tread Type, HWY = HIGHWAY TREAD, M&S = MUD & SNOW, A/W = ALL-WEATHER
NOTE: MFG., GDYR = GOODYEAR, GEN = GENERAL, FSTN = FIRESTONE

REAR AXLE RATIO				2.71	2.94	3.21	3.55
TIRE SIZE	MATERIAL	THREAD	MFR.				
LR60-15	Poly-A/R	HWY	GDYR	2538926	2538928	2538931	2538934
P195/75R15	Glass-B/R	HWY	GDYR	2538928	2538930	2538933	2538937
P195/75R15	Glass-B/R	HWY	GEN	2538927	2538930	2538932	2538936
P195/75R15	Glass-B/R	HWY	FSTN	2538928	2538930	2538933	2538937
P205/75R15	Glass-B/R	HWY	GDYR	2538927	2538929	2538932	2538935
P205/75R15	Glass-B/R	HWY	GEN	2538927	2538929	2538932	2538935
P205/75R15	Glass-B/R	HWY	FSTN	2538928	2538930	2538933	2538937
P205/75R15	Glass-B/R	M&S	ALL	2538927	2538929	2538932	2538935
P215/75R15	Glass-B/R	HWY	GDYR	2538927	2538929	2538932	2538935
P215/75R15	Glass-B/R	HWY	GEN				2538935
P215/75R15	Glass-B/R	HWY	FSTN	2538926	2538929	2538931	2538935
P215/75R15	Glass-B/R	M&S	GDYR	2538926	2538929	2538931	2538934
P215/75R15	Glass-B/R	M&S	GEN	2538926	2538929	2538931	2538935
P215/75R15	Glass-B/R	M&S	FSTN	2538926	2538928	2538931	2538934
P225/75R15	Glass-B/R	HWY	GDYR	2538926	2538928	2538931	2538934
P225/75R15	Glass-B/R	HWY	GEN	2538926	2538928	2538931	2538934
P225/75R15	Glass-B/R	HWY	FSTN	2538926	2538928	2538931	2538934
P225/75R15	Glass-B/R	M&S	GDYR	2538926	2538928	2538931	2538934
P225/75R15	Glass-B/R	M&S	GEN	3410025(A)	2538927	2538930	2538933
P225/75R15	Glass-B/R	M&S	FSTN	2538926	2538928	2538930	2538934
P235/75B15	Poly/Bias	HWY	ALL	3410025(A)	2538927	2538930	2538933
P235/75B15	Poly/Bias	M&S	GDYR	3410024	2538926	2538929	2538932
P235/75B15	Poly/Bias	M&S	FSTN	3410025(A)	2538927	2538930	2538933
P235/70R15	Steel-B/R	HWY	GDYR	2538926	2538928	2538931	2538934
P235/70R15	Steel-B/R	HWY	GEN	2538926	2538928	2538931	2538934
P235/75R15	Glass-B/R	HWY	GDYR	3410025(A)	2538928	2538930	2538933
P235/75R15	Glass-B/R	HWY	GEN	3410025(A)	2538928	2538930	2538933
P235/75R15	Glass-B/R	HWY	FSTN	3410025(A)	2538927	2538930	2538933
P235/75R15	Glass-B/R	M&S	ALL	3410025(A)	2538927	2538930	2538933
P235/75R15	Steel-B/R	HWY	GDYR	3410025(A)	2538928	2538930	2538933
P235/75R15	Steel-B/R	HWY	GEN	3410025(A)	2538927	2538930	2538933
P235/75R15	Steel-B/R	HWY	FSTN	3410025(A)	2538927	2538930	2538933
P235/75R15	Steel-B/R	A/W	GDYR	3410025(A)	2538928	2538930	2538933
P235/75R15	Steel-B/R	A/W	GEN	3410025(A)	2538927	2538930	2538933
P235/75R15	Steel-B/R	A/W	FSTN	3410025(A)	2538927	2538930	2538933
P235/75R15-XL	Glass-B/R	HWY	ALL	3410025(A)	2538928	2538930	2538933
P235/75R15-XL	Steel-B/R	M&S	GDYR	3410025(A)	2538927	2538930	2538933
P235/75R15-XL	Steel-B/R	M&S	GEN	3410025(A)	2538927	2538929	2538932
P235/75R15-XL	Steel-B/R	M&S	FSTN	3410025(A)	2538927	2538930	2538933
P235/75R15-XL	Glass-B/R	M&S	FSTN	3410025(A)	2538927	2538930	2538933
P255/70R15	Steel-B/R	HWY	GDYR	3410025(A)	2538927	2538930	2538933
P255/70R15	Steel-B/R	HWY	GEN	3410025(A)	2538927	2538930	2538933
10-15-LT-B	Poly/Bias	HWY	ALL	3410024(A)	2538926	2538928	2538931

LIGHT A = All Sport Utility (Ramcharger). B = All Compact Models. D = Conventional Cab.
DUTY AD = 2 Wheel Drive Only (Ramcharger). CB-MB = Compact Front Section Only. W = Conventional Cab 4 Wheel Drive.
CODES: AW = 4 Wheel Drive Only (Ramcharger). P = Forward Control Chassis. M = Motor Home.

MEDIUM-HEAVY CODES: XNT = Low Cab Forward. D = Conventional Cab. S = School Bus. W = 4-Wheel Drive.

1978-81 LIGHT DUTY TRUCK PARTS CATALOG

TRANSMISSION, AUTO.

DESCRIPTION	REAR AXLE	AXLE RATIO	AXLE RATIO	AXLE RATIO	AXLE RATIO
-------------	-----------	------------	------------	------------	------------

**PINION CHART, SPEEDOMETER - A727,A904,A999 TRANS.
 AND N.P.G. 208 TRANSFER CASE - 1980-81**

10-15-LT-C	Poly/Bias	HWY	ALL	3410024(A)	2538926	2538928	2538931
7.00x15-D	Nyl/Bias	HWY	GDYR	3410024(A)	2538926	2538929	2538932
7.00x15-D	Nyl/Bias	HWY	GEN	3410024(A)	2538926	2538929	2538932
7.00x15-D	Nyl/Bias	HWY	FSTN	3410025(A)	2538927	2538929	2538932
7.00x15D	Nyl/Bias	M&S	GDYR	3410024(A)	2538926	2538929	2538932
7.00x15-D	Nyl/Bias	M&S	GEN	3410024(A)	2538926	2538929	2538932
7.00x15-D	Nyl/Bias	M&S	FSTN	3410024(A)	2538926	2538928	2538931
.....						
REAR AXLE RATIO				3.54	3.73	4.10	4.56
.....						
7.50x16-E	Nyl/Bias	HWY	GDYR	2538929	2538930	2538934	2538938
7.50x16-E	Nyl/Bias	HWY	GEN	2538929	2538931	2538934	2538938
7.50x16-E	Nyl/Bias	HWY	FSTN	2538930	2538932	2538935	2538938
7.50x16-E	Nyl/Bias	M&S	GDYR	2538929	2538930	2538933	2538938
7.50x16-E	Nyl/Bias	M&S	GEN	2538929	2538931	2538934	2538938
7.50x16-E	Nyl/Bias	M&S	FSTN	2538930	2538931	2538934	2538938
8.00x16.5-D	Poly/Bias	HWY	GDYR	2538933	2538935	2538938	2538943
8.00x16.5-D	Poly/Bias	HWY	GEN	2538933	2538935	2538938	2538943
8.00x16.5-D	Poly/Bias	HWY	FSTN	2538933	2538935	2538939	2538943
8.00x16.5-E	Poly/Bias	HWY	GDYR	2538933	2538935	2538939	2538943
8.00x16.5-E	Poly/Bias	HWY	GEN	2538933	2538935	2538938	2538942
8.00x16.5-E	Poly/Bias	HWY	FSTN	2538933	2538935	2538939	2538943
8.00Rx16.5-E	Steel-B/R	HWY	GDYR	2538934	2538936	2538939	2538943
8.00Rx16.5-E	Steel-B/R	HWY	GEN	2538934	2538935	2538939	2538943
8.00Rx16.5-E	Steel-B/R	HWY	FSTN	2538933	2538935	2538939	2538944
8.00x16.5-E	Poly/Bias	M&S	GDYR	2538933	2538935	2538939	2538943
8.00x16.5-E	Poly/Bias	M&S	GEN	2538933	2538935	2538938	2538943
8.75x16.5-E	Poly/Bias	HWY	GDYR	2538932	2538934	2538937	
8.75x16.5-E	Poly/Bias	HWY	GEN	2538932	2538933	2538937	
8.75x16.5-E	Poly/Bias	HWY	FSTN	2538932	2538934	2538938	
8.75x16.5-E	Poly/Bias	M&S	GDYR	2538932	2538933	2538937	
8.75x16.5-E	Nyl/Bias	HWY	ALL	2538932	2538934	2538937	
8.75Rx16.5-E	Steel-B/R	HWY	GDYR	2538932	2538934	2538938	
8.75Rx16.5-E	Steel-B/R	HWY	GEN	2538932	2538934	2538938	
8.75Rx16.5-E	Steel-B/R	HWY	FSTN	2538932	2538934	2538937	
8.75Rx16.5-F	Steel-B/R	HWY	GDYR	2538932	2538934	2538938	
9.50x16.5-E	Poly/Bias	HWY	GDYR	2538931	2538932	2538935	
9.50x16.5-E	Poly/Bias	HWY	GEN	2538931	2538933	2538936	
9.50x16.5-E	Poly/Bias	HWY	FSTN	2538932	2538934	2538937	
9.50x16.5-E	Poly/Bias	M&S	GDYR	2538930	2538932	2538935	
9.50x16.5-E	Poly/Bias	M&S	GEN	2538931	2538932	2538936	
9.50Rx16.5-E	Steel-B/R	HWY	ALL	2538931	2538933	2538936	
ADAPTERS							
PART NO.			RATIO (See Ref. No. 8)			
1933049(A)8794 to 1 Ratio			
2235626(B)6944 to 1 Ratio			
PINION, SPEEDOMETER							
3410024 - 24 Th.			3410025 - 25 Th.			
2538926 - 26 Th.			2538927 - 27 Th.			

LIGHT A = All Sport Utility (Ramcharger). B = All Compact Models. D = Conventional Cab.
DUTY AD = 2 Wheel Drive Only (Ramcharger). CB-MB = Compact Front Section Only. W = Conventional Cab 4 Wheel Drive.
CODES: AW = 4 Wheel Drive Only (Ramcharger). P = Forward Control Chassis. M = Motor Home.

MEDIUM-HEAVY CODES: XNT = Low Cab Forward. D = Conventional Cab. S = School Bus. W = 4-Wheel Drive.
 AR=Use as Required # =New Part Number Printed in U.S.A. June, 1982

TRANSMISSION, AUTO. **1978-81 LIGHT DUTY TRUCK PARTS CATALOG**

DESCRIPTION	REAR AXLE	AXLE RATIO	AXLE RATIO	AXLE RATIO	AXLE RATIO
-------------	-----------	------------	------------	------------	------------

**PINION CHART, SPEEDOMETER - A727,A904,A999 TRANS.
 AND N.P.G. 208 TRANSFER CASE - 1980-81**

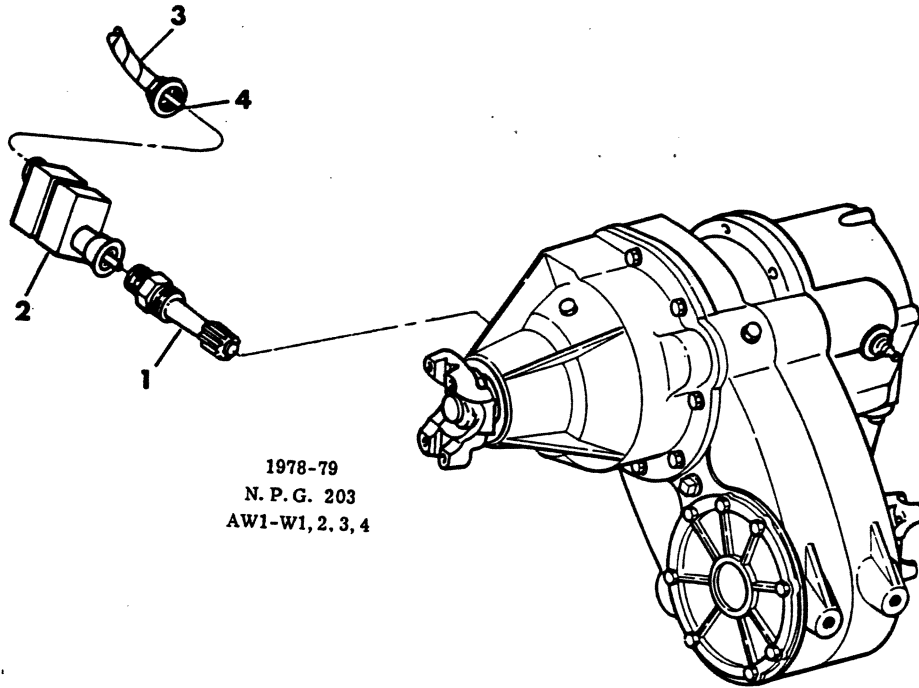
2538928 - 28 Th.	2538929 - 29 Th.				
2538930 - 30 Th.	2538931 - 31 Th.				
2538932 - 32 Th.	2538933 - 33 Th.				
2538934 - 34 Th.	2538935 - 35 Th.				
2538936 - 36 Th.	2538937 - 37 Th.				
2538938 - 38 Th.	2538939 - 39 Th.				
2538940 - 40 Th.	2538941 - 41 Th.				
2538942 - 42 Th.	2538943 - 43 Th.				
2538944 - 44 Th.	2538945 - 45 Th.				

LIGHT A = All Sport Utility (Ramcharger). B = All Compact Models. D = Conventional Cab.
DUTY AD = 2 Wheel Drive Only (Ramcharger). CB-MB = Compact Front Section Only. W = Conventional Cab 4 Wheel Drive.
CODES: AW = 4 Wheel Drive Only (Ramcharger). P = Forward Control Chassis. M = Motor Home.

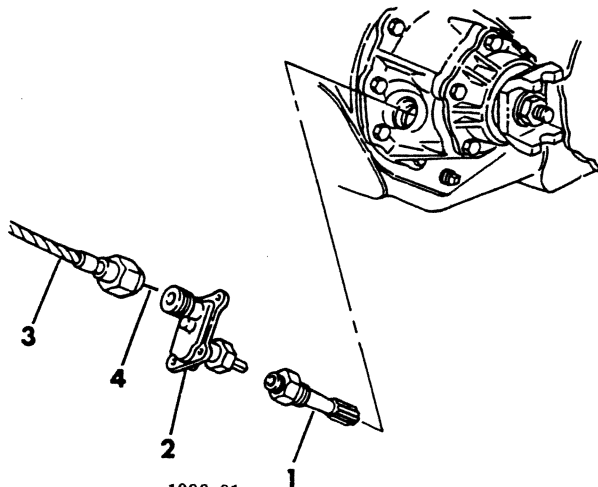
MEDIUM-HEAVY CODES: XNT = Low Cab Forward. D = Conventional Cab. S = School Bus. W = 4-Wheel Drive.

8351 1500D

SPEEDOMETER CABLE, ADAPTER & PINION AW1 - W1,2,3,4



1978-79
N. P. G. 203
AW1-W1, 2, 3, 4



1980-81
N. P. G. 205
W2, 3, 4

ITEM	PART NUMBER	QTY	MODEL	DESCRIPTION
SPEEDOMETER CABLE, ADAPTER & PINION AW1 - W1,2,3,4				
1			AW1-W1,2,3,4	PINION, A727 Trans. (See Chart, Illus. No. 1550B)
2		AR		ADAPTER ASSY. (See Chart, Illus. No. 1550B)
3	4085 502	1	All	SPEEDOMETER CABLE, w/SHAFT and HOUSING, 80" Long, w/203 T/Case - 1978
	4114 403	1	All	1979
	4114 403	1	W2,3,4	w/205 T/Case - 1980
	4216 629	1	W2,3,4	1981
	4114 567	1	W3,4	Speedo. to E.G.R. Switch, w/Hvy. Duty Cyc. Eng., 26" Long - 1979
	4114 784	1	W2	17" Long, w/360-4 BBL - 1980
	4085 998	1	W3,4	E.G.R. Switch to Trans., w/Hvy. Duty Cyc. Eng., 64" Long - 1979
4	2448 294	1	All	SHAFT, Cable Drive, 80" Long, Universal Shaft Pkg.
	2216 552	1	All	GROMMET, Speedo. Cable
	3592 374	1	All	SLEEVE, Speedo. Cable Silencer

LIGHT	A = All Sport Utility (Ramcharger).	B = All Compact Models.	D = Conventional Cab.
DUTY	AD = 2 Wheel Drive Only (Ramcharger).	CB-MB = Compact Front Section Only.	W = Conventional Cab 4 Wheel Drive.
CODES:	AW = 4 Wheel Drive Only (Ramcharger).	P = Forward Control Chassis.	M = Motor Home.

MEDIUM-HEAVY CODES: XNT = Low Cab Forward. D = Conventional Cab. S = School Bus. W = 4-Wheel Drive.

AR=Use as Required

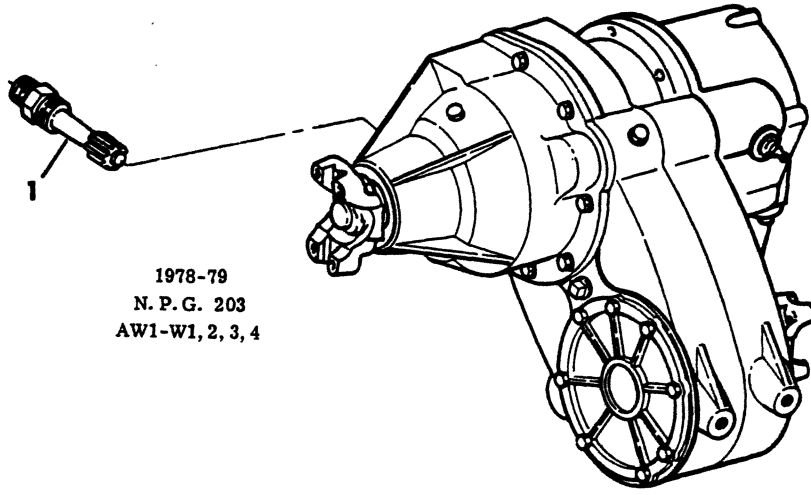
=New Part Number

Printed in U.S.A.

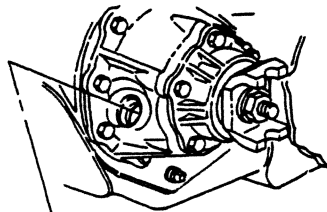
June, 1982

8351 1550B

PINION CHART, SPEEDOMETER, WITH N.P.G. 203,205 TRA
NSFER CASE, AW1-W1,2,3,4- 203 1978-79, 205 1980-81



1978-79
N. P. G. 203
AW1-W1, 2, 3, 4



1980-81
N. P. G. 205
W2, 3 4

DESCRIPTION	REAR AXLE	AXLE RATIO	AXLE RATIO	AXLE RATIO	AXLE RATIO
-------------	-----------	------------	------------	------------	------------

**PINION CHART, SPEEDOMETER, WITH N.P.G. 203,205 TRA
NSFER CASE, AW1-W1,2,3,4- 203 1978-79, 205 1980-81**

REAR AXLE RATIO			3.21/3.23	3.54/3.55	3.90/3.91
TIRE SIZE	MATERIAL	TIRE TYPE			
HR70-15	P & S	HWY	2225026(A)	2225028(A)	
LR70-15	P & S	HWY	2225026(A)	2225027(A)	
E78-15	P & G	HWY	2225027(A)	2225026	2225027
F78-15	P & G	HWY	2225027(A)	2225028	2225027
G78-15	P & G	HWY	2225028(B)	2225028(B)	2225027
H78-15	P & G	HWY	2225026(A)	2225028(A)	2225026
HR78-15	P & S	HWY & M&S	2225026(A)	2225028(A)	2225027(C)
L78-15	P & G	HWY	2225026(A)	2225027(A)	2225026
L78-15	P & G	MUD & SNOW	2225026(B)	2225027(A)	2225028(A)
LR78-15	P & S	HWY & M&S	2225026(A)	2225027(A)	2225026
7.00-15	NYLON	HWY	2225026(B)	2225027(A)	2225026
10.00-15	POLYESTER	HWY	2225026(B)	2225027(B)	2225028(A)
6.50	NYLON	HWY	2225026(B)	2225027(A)	2225026

REAR AXLE RATIO			4.10	4.88
TIRE SIZE	MATERIAL	TIRE TYPE		
7.00-16	NYLON	HWY & M&S	2225026	2225029
7.50-16	NYLON	HWY & M&S	2225026	2225028
8.00-16.5	NYLON	HWY	2225027	2225029(C)
8.00R-16.5	P & S	HWY	2225027	2225029(C)
8.00-16.5	NYLON	HWY	2225026	2225029
8.75-16.5	NYLON	HWY	2225027	2225029
8.75-16.5	NYLON	MUD & SNOW	2225026	2225029
9.50-16.5	NYLON	HWY & M&S	2225026	2225029

ADAPTERS

PART NO.	RATIO (See Ref. No. 2)
1790831(A)	1.2020 to 1 Ratio
3828424(B)	1.2844 to 1 Ratio
1797169(C)	.944 to 1 (Service Vendor)

PINION, SPEEDOMETER

2225026 - 14 Th.	2225027 - 15 Th.
2225028 - 16 Th.	2225029 - 17 Th.

**PINION CHART, SPEEDOMETER, WITH N.P.G. 205
TRANSFER CASE, W200,300,400 - 1980-81**

REAR AXLE RATIO			4.10	4.56
7.50x16.0-E	Nyl/Bias	HWY ALL		2225026(C)
7.50x16.0-E	Nyl/Bias	M&S GDYR		2225027(C)
7.50x16.0-E	Nyl/Bias	M&S GEN		2225027(A)
7.50x16.0-E	Nyl/Bias	M&S FSTN		2225026(C)
8.00x16.5-D	Poly/Bias	HWY GDYR		2225028(C)
8.00x16.5-D	Poly/Bias	HWY GEN		2225029(A)

LIGHT A = All Sport Utility (Ramcharger). B = All Compact Models. D = Conventional Cab.
DUTY AD = 2 Wheel Drive Only (Ramcharger). CB-MB = Compact Front Section Only. W = Conventional Cab 4 Wheel Drive.
CODES: AW = 4 Wheel Drive Only (Ramcharger). P = Forward Control Chassis. M = Motor Home.

MEDIUM-HEAVY CODES: XNT = Low Cab Forward. D = Conventional Cab. S = School Bus. W = 4-Wheel Drive.

AR=Use as Required

=New Part Number

Printed in U.S.A.

June, 1982

1978-81 LIGHT DUTY TRUCK PARTS CATALOG

TRANSMISSION, AUTO.

DESCRIPTION	REAR AXLE	AXLE RATIO	AXLE RATIO	AXLE RATIO	AXLE RATIO
-------------	-----------	------------	------------	------------	------------

**PINION CHART, SPEEDOMETER, WITH N.P.G. 203,205 TRA
 NSFER CASE, AW1-W1,2,3,4- 203 1978-79, 205 1980-81**

8.00x16.5-D	Poly/Bias	HWY	FSTN		2225028(C)
8.00x16.5-E	Poly/Bias	HWY	GDYR		2225029(A)
8.00x16.5-E	Poly/Bias	HWY	GEN		2225029(A)
8.00x16.5-E	Poly/Bias	HWY	FSTN		2225028(C)
8.00x16.5-E	Poly/Bias	M&S	GDYR		2225028(B)
8.00Rx16.5-E	Steel-B/R	HWY	ALL		2225028(C)
9.50x16.5-E	Poly/Bias	HWY	GDYR	2225026(A)	
9.50x16.5-E	Poly/Bias	HWY	GEN	2225026	
9.50x16.5-E	Poly/Bias	HWY	FSTN	2225026(B)	
9.50x16.5-E	Poly/Bias	M&S	GDYR	2225026(A)	
9.50x16.5-E	Poly/Bias	M&S	GEN	2225026	
9.50Rx16.5-E	Steel-B/R	HWY	ALL	2225026	

ADAPTERS

PART NO.	ADAPTER RATIO
4167563(A)	.9642 to 1 Ratio
4167564(B)	1.0263 to 1 Ratio
4167565(C)	1.0500 to 1 Ratio

PINION, SPEEDOMETER

2225026 - 14 Th.	2225027 - 15 Th.
2225028 - 16 Th.	2225029 - 17 Th.

LIGHT A = All Sport Utility (Ramcharger). B = All Compact Models. D = Conventional Cab.
DUTY AD = 2 Wheel Drive Only (Ramcharger). CB-MB = Compact Front Section Only. W = Conventional Cab 4 Wheel Drive.
CODES: AW = 4 Wheel Drive Only (Ramcharger). P = Forward Control Chassis. M = Motor Home.

MEDIUM-HEAVY CODES: XNT = Low Cab Forward. D = Conventional Cab. S = School Bus. W = 4-Wheel Drive.

AR=Use as Required

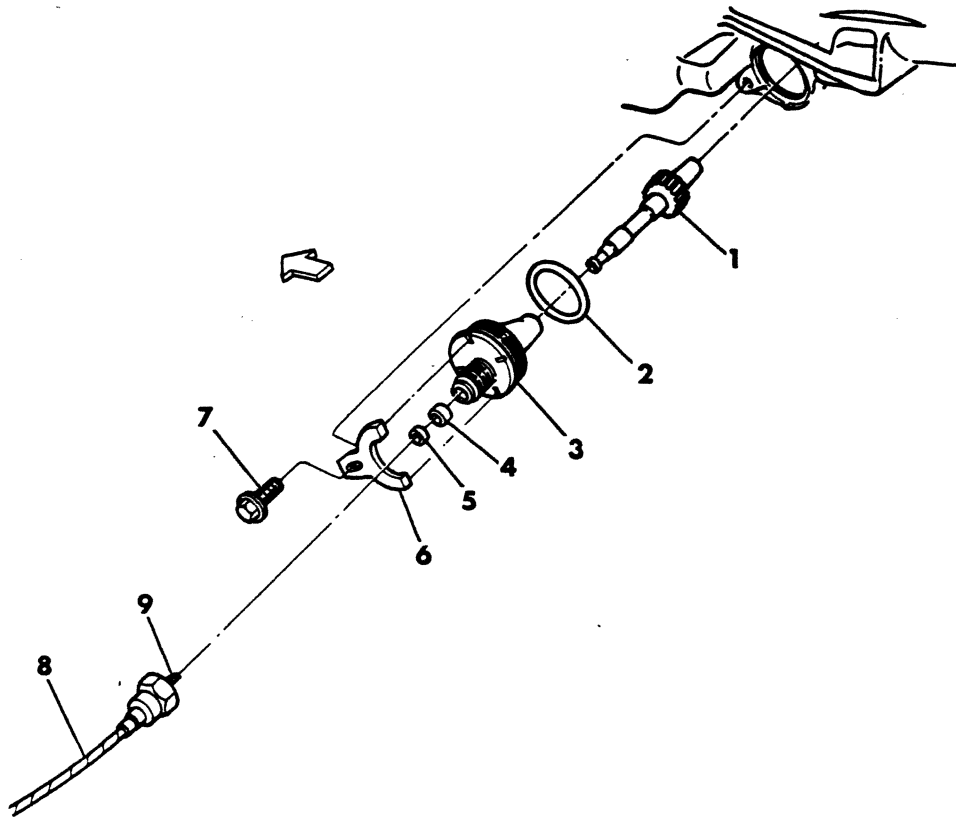
= New Part Number

Printed in U.S.A.

June, 1982

SPEEDOMETER CABLE & PINION CHART
M3,4,5,6

8351 1600A



ITEM	PART NUMBER	QTY	MODEL	DESCRIPTION
------	-------------	-----	-------	-------------

SPEEDOMETER CABLE & PINION CHART
M3,4,5,6

ITEM	PART NUMBER	QTY	MODEL	DESCRIPTION
1			M3,4,5,6	PINION, A727 Trans.(See Chart Below)
2	6025 752	1	All	"O" RING, Retainer, Outer
	6031 370	1	All	"O" RING, Retainer
3	2538 608	1	All	RETAINER, Pinion
4	2538 588	1	All	SEAL, Retainer, Inner
5	2538 571	1	All	RING, Retainer, Inner
6	2892 399	1	All	CLAMP, Pinion Retainer
7	181 086	1	All	SCREW, 5/16-18 x 3/4"
8	4085 506	1	All	SPEEDOMETER CABLE, w/SHAFT and HOUSING, 106" Long, - 1978
	4114 405	1		All Except I.H.C. 446 Eng. - 1979
	4162 513	1		w/I.H.C. 446 Eng., 108" Long
	4114 289	1	All	Speedo. to E.G.R. Switch, 40" Long
	4085 998	1	All	E.G.R. Switch to Trans., 64" Long
	4114 289	1	All	Speedo. to Servo, w/Trip Computer, 40" Long
	4162 164	1	All	Speedo. to Servo, w/o Trip Computer, 112" Long
	4162 163	1	All	Trip Computer to Servo, 72" Long
	4114 409	1	All	Servo to Trans. 50" Long
9	2448 295	1	All	SHAFT, Cable Drive, 113" Long, Universal Shaft Pkg.
	3592 374	1	All	SLEEVE, Speedo. Cable Silencer
	1302 783	1	All	CLIP, Cable Holding

1978-79

TIRE SIZE - REAR AXLE RATIO	TEETH
8.00-17.5 - 4.56	2538940 - 40 Teeth
8.00-19.5 - 4.56	2538935 - 35 Teeth
8.00-17.5 - 4.88	2538942 - 42 Teeth
8.00-19.5 - 4.88	2538938 - 38 Teeth
8R-19.5F - 4.88	2538939 - 39 Teeth
1980	
8.00x17.5-C - 4.56 - Polyester	2538939 - 39 Teeth
8.00x17.5-D - 4.56 - Polyester	2538938 - 38 Teeth
8.00x17.5-C-D- 4.88 - Polyester	2538942 - 42 Teeth
8.00x19.5-D - 4.88 - Polyester	2538939 - 39 Teeth
8.00x19.5-E - 4.88 - Polyester	2538938 - 38 Teeth
8.00Rx19.5-E - 4.88 - Steel-B/R	2538939 - 39 Teeth
8.00Rx19.5-F - 5.22 - Steel-B/R	2538942 - 42 Teeth

LIGHT A = All Sport Utility (Ramcharger). B = All Compact Models. D = Conventional Cab.
DUTY AD = 2 Wheel Drive Only (Ramcharger). CB-MB = Compact Front Section Only. W = Conventional Cab 4 Wheel Drive.
CODES: AW = 4 Wheel Drive Only (Ramcharger). P = Forward Control Chassis. M = Motor Home.

MEDIUM-HEAVY CODES: XNT = Low Cab Forward. D = Conventional Cab. S = School Bus. W = 4-Wheel Drive.

AR=Use as Required

#=New Part Number

Printed in U.S.A.

June, 1982

