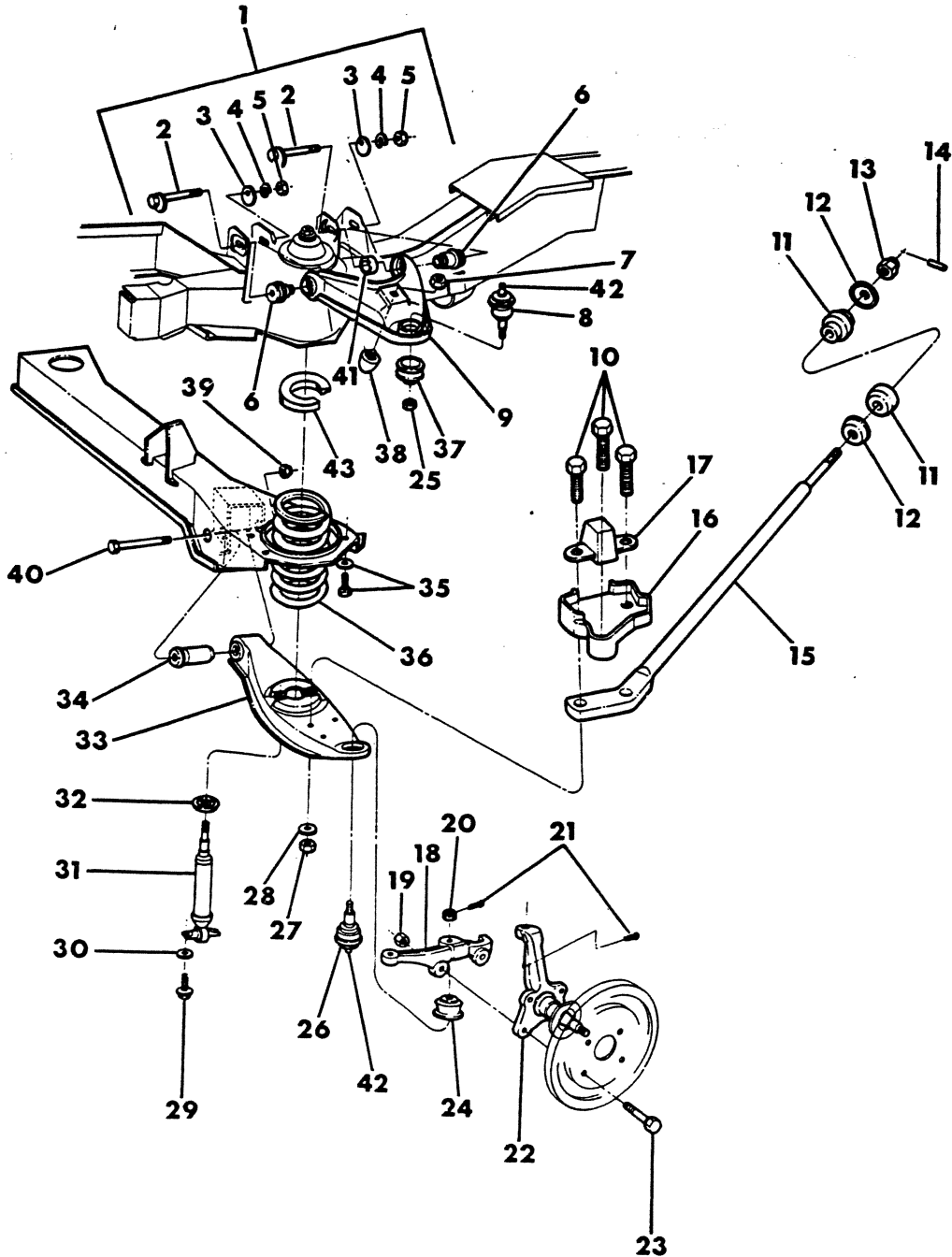


## GROUP 17 - SPRINGS

ARM & STRG.KNUCKLE,FRONT SUSP. UPPER CONTROL CB-MB,B100-200-300-1979-80-81 .....	Fig. 17-52
ARM,COIL SPRG.,SHOCK & SWAY BAR,FRT.SUSP.LOWER CON TROL-B100-200-300,CB-MB-1979-80-81 .....	Fig. 17-53
SPRING & SHOCK ABSORBER,FRONT SUSPENSION COIL-1978 CB,MB,B100-200-300 .....	Fig. 17-50
SPRING REPLACEMENT CHART,FRONT-LIGHT DUTY .....	Fig. 17-3000
SPRING REPLACEMENT CHART,REAR-LIGHT DUTY .....	Fig. 17-3100
SPRING WITH AUXILLIARY & SHOCK ABSORBER,REAR LEAF AD100,D100-200-300-400 .....	Fig. 17-900
SPRING WITH AUXILLIARY & SHOCK ABSORBER,REAR LEAF AW100,W100-200-300-400 .....	Fig. 17-1000
SPRING WITH AUXILLIARY AND SHOCK ABSORBER, REAR LEAF-RD200 .....	Fig. 17-1050
SPRING WITH SHOCK ABSORBER,FRONT LEAF- 3500 LB.AXLE-RD200 .....	Fig. 17-450
SPRING WITH SHOCK ABSORBER,FRONT LEAF M300-400-500-600 .....	Fig. 17-600
SPRING WITH SHOCK ABSORBER,REAR LEAF-B100-200 .....	Fig. 17-700
SPRING WITH SHOCK ABSORBER,REAR LEAF CB-MB200-300-400,B300 .....	Fig. 17-800
SPRING WITH SHOCK ABSORBER,REAR LEAF M300-400-500-600 .....	Fig. 17-1200
SPRING,FRONT SUSPENSION COIL SHOCK ABSORBER & SWAY ELIMINATOR AD1,D100-200-300-400 .....	Fig. 17-55
SPRING,SHOCK ABSORBER & SWAY ELIMINATOR,FRONT LEAF -3500 LB.Axle-AW100 .....	Fig. 17-300
SPRING,SHOCK ABSORBER & SWAY ELIMINATOR,FRONT LEAF -3500,4500 Lb. AXLE-W100-200-300-400 .....	Fig. 17-400

8317 050

## SPRING & SHOCK ABSORBER, FRONT SUSPENSION COIL-1978 CB, MB, B100-200-300



ITEM	PART NUMBER	QTY	MODEL	DESCRIPTION
<b>SPRING &amp; SHOCK ABSORBER, FRONT SUSPENSION COIL-1978 CB, MB, B100-200-300</b>				
1	2808 445	1		CAM PACKAGE-Consists Of Items 2,3,4,5,6
2		4		CAM and Bolt-Serviced In Item 1
3		4		CAM -Serviced In Item 1
4	123 174	4		LOCKWASHER-Also Serviced In Item 6
5	6030 998	4		NUT,Cam Bolt-Also Serviced In Item 6
6	2269 124	4		BUSHING,Upper Control Arm
7	152 344	2		LOCKNUT,Upper Bumper
8	2808 394	2		BALL JOINT PACKAGE,Upper Control Arm-Without H.D. Package
8	3744 929	2		BALL JOINT PACKAGE,Upper Control Arm-With H.D. Package
9	3492 122-3	1		ARM with REINFORCEMENT,Upper Control
10	6030 369	AR		BOLT,Turn Stop Bracket
11	3898 817	2	B1-2	BUSHING,Lower Control Arm Strut-Front
11	3898 974	2	B3	BUSHING,Lower Control Arm Strut-Front
11	4037 659	2		BUSHING,Lower Control Arm Strut-Rear
12	3898 896	2		RETAINER,Lower Control Arm Strut-Front
12	3898 897	2		RETAINER,Lower Control Arm Strut-Rear
13	9416 467	AR		NUT-3/4-10
14	6027 381	2		PIN
15	4031 205	2		STRUT,Lower Control Arm
16	3638 920-1	1	B1-2	BRACKET,Bumper and Wheel Turn Stop
16	4039 246-7	1	B3,CB-MB3-4	Without 1575/1725 Lb.Spring-Up To Approx.6-1-78
16	4115 536-7	1	B3,CB-MB3-4	Without 1575/1725 Lb.Spring-After Approx.6-1-78
16	4032 978-9	1	B3	With 1575/1725 Lb.Spring
17	4057 078	2		BUMPER,Front Suspension Jounce
18	3634 920-1	1		ARM,Front Susp. Steering Knuckle-Without H.D.Pkg.
18	3733 190-1	1		ARM,Front Susp. Steering Knuckle-With H.D. Pkg.
19	152 353	AR		NUT-5/8-18
19	152 355	AR		NUT-3/4-16
20	1671 405	2		NUT,Lower Ball Joint Stud-3/4-16
21		AR		PIN
22	3634 908-9	1	B1-2	KNUCKLE,Front Suspension Steering
22	3634 912-3	1	B3	KNUCKLE,Front Susp.Strg.-W/O 1725/1915 Lb.Sprg., W/O H.D. Package
22	3634 916-7	1	B3	KNUCKLE,Front Susp.Strg.-With 1725/1915 Lb. Sprg.With H.D. Package
23	6030 063	4		BOLT,Knuckle To Knuckle Arm-3/4-16 x 2.50
23	6030 009	4		BOLT,Knuckle To Knuckle Arm-5/8-18 x 2.25
24				SEAL,Lower C/Arm Ball JT.-with H.D. Pkg.In Item 26
24	2462 886	2		SEAL,Lower C/Arm Ball JT.-Without H.D. Package
25	273 912	2		NUT,Upper Ball Joint Stud-5/8-18
25	1671 405	2		NUT,Upper Ball Joint Stud-3/4-16
26	3837 088	2		BALL JOINT PACKAGE,Lower Control Arm-Without H.D.Package
26	3683 983	2		BALL JOINT PACKAGE,Lower Control Arm-With H.D.Package
27	6029 982	6		NUT,1/2-13
28	6024 112	6		WASHER,Coned
29	6025 355	4		SCREW
30	120 393	4		WASHER
31	3780 546	2		SHOCK ABSORBER-1" Dia.
31	4086 417	2	B1-2	1 3/8" Dia.
31	4086 417	2	B3	1 3/8" Dia.-Except 4000 Lb. Axle
31	4086 420	2	B3	1 3/8" Dia.-With 4000 Lb. Axle

LIGHT A = All Sport Utility (Ramcharger).

B = All Compact Models.

D = Conventional Cab.

DUTY AD = 2 Wheel Drive Only (Ramcharger).

CB-MB = Compact Front Section Only.

W = Conventional Cab 4 Wheel Drive.

CODES: AW = 4 Wheel Drive Only (Ramcharger).

P = Forward Control Chassis.

M = Motor Home.

MEDIUM-HEAVY CODES: XNT = Low Cab Forward. D = Conventional Cab. S = School Bus. W = 4-Wheel Drive.

AR=Use as Required

# =New Part Number

Printed in U.S.A.

June, 1982

# 1978-81 LIGHT DUTY TRUCK PARTS CATALOG

ITEM	PART NUMBER	QTY	MODEL	DESCRIPTION
------	-------------	-----	-------	-------------

**SPRING & SHOCK ABSORBER,FRONT SUSPENSION COIL-1978  
 CB,MB,B100-200-300**

32	2206 925	4		RETAINER,Shock Absorber Upper
33	3492 126-7	1	B3	ARM,Lower Susp. Control-With H.D. Package
	3492 860-1	1		ARM with REINFORCEMENT,Lower Control-Without H.D. Pkg.
34	2961 123	2		BUSHING,Lower Control Arm
34	3492 128	2	B3	With 1725/1915 Lb. Spring
34	2961 123	2	B3	Without H.D. Pkg.
35	181 163	8		SCREW-1/2-13 x 1.25
35	6023 054	8		WASHER
36				SPRING,COIL

NOTE: Spring Ratings Will Now Be Listed As Pad/Ground Capacity

	3492 932	2	B1	1100/1240 Lb.
	3492 933	2	B1-2	1200/1340 Lb.
	3492 934	2	B1-2	1400/1540 Lb.
	3492 934	2	B3	1400/1570 Lb.
	3492 935	2	B1-2	1475/1615 Lb.
	3492 935	2	B3	1475/1645 Lb.
	3492 936	2		1500/1720 Lb.
	3496 340	2	MB3	1500/1750 Lb.
	4032 442	2	B3	1575/1725 Lb.,Use With 8.75-16.5 Tires Only
	3496 341	2	B3	1725/1915 Lb.
	4086 492	2	B3	1850/2050 Lb.
37				SEAL,Upper Control Arm Ball Joint
	3722 449	2		Without H.D. Pkg.
	2462 886	2		With H.D. Pkg.
38	4014 050	2		BUMPER,Upper Control Arm
39				NUT,Lower Control Arm Bolt
	152 353	2		5/8-18,Without H.D.Pkg.
	152 355	2		3/4-16,With H.D.Pkg.
40	6029 377	2	B1-2	BOLT,Lower Control Arm
	6029 377	2	B3	5/8-18 x 4.50,Without H.D.Pkg.
	6030 024	2	B3	3/4-16 x 4.75,With H.D.Pkg.
41	3492 782	4		SLEEVE,Upper Control Arm Bushing
42	6030 099	AR		OILER-Upper or Lower Ball Joint
43	4039 136	2		ISOLATOR,Coil Spring Upper
NOTE: The Following Parts Are Not Illustrated				
	3492 277	2	B1-2	PLATE,Strg.Knuckle Wheel Turn Stop

<b>LIGHT</b>	A = All Sport Utility (Ramcharger).	B = All Compact Models.	D = Conventional Cab.
<b>DUTY</b>	AD = 2 Wheel Drive Only (Ramcharger).	CB-MB = Compact Front Section Only.	W = Conventional Cab 4 Wheel Drive.
<b>CODES:</b>	AW = 4 Wheel Drive Only (Ramcharger).	P = Forward Control Chassis.	M = Motor Home.

**MEDIUM-HEAVY CODES:** XNT = Low Cab Forward. D = Conventional Cab. S = School Bus. W = 4-Wheel Drive.

AR=Use as Required

# =New Part Number

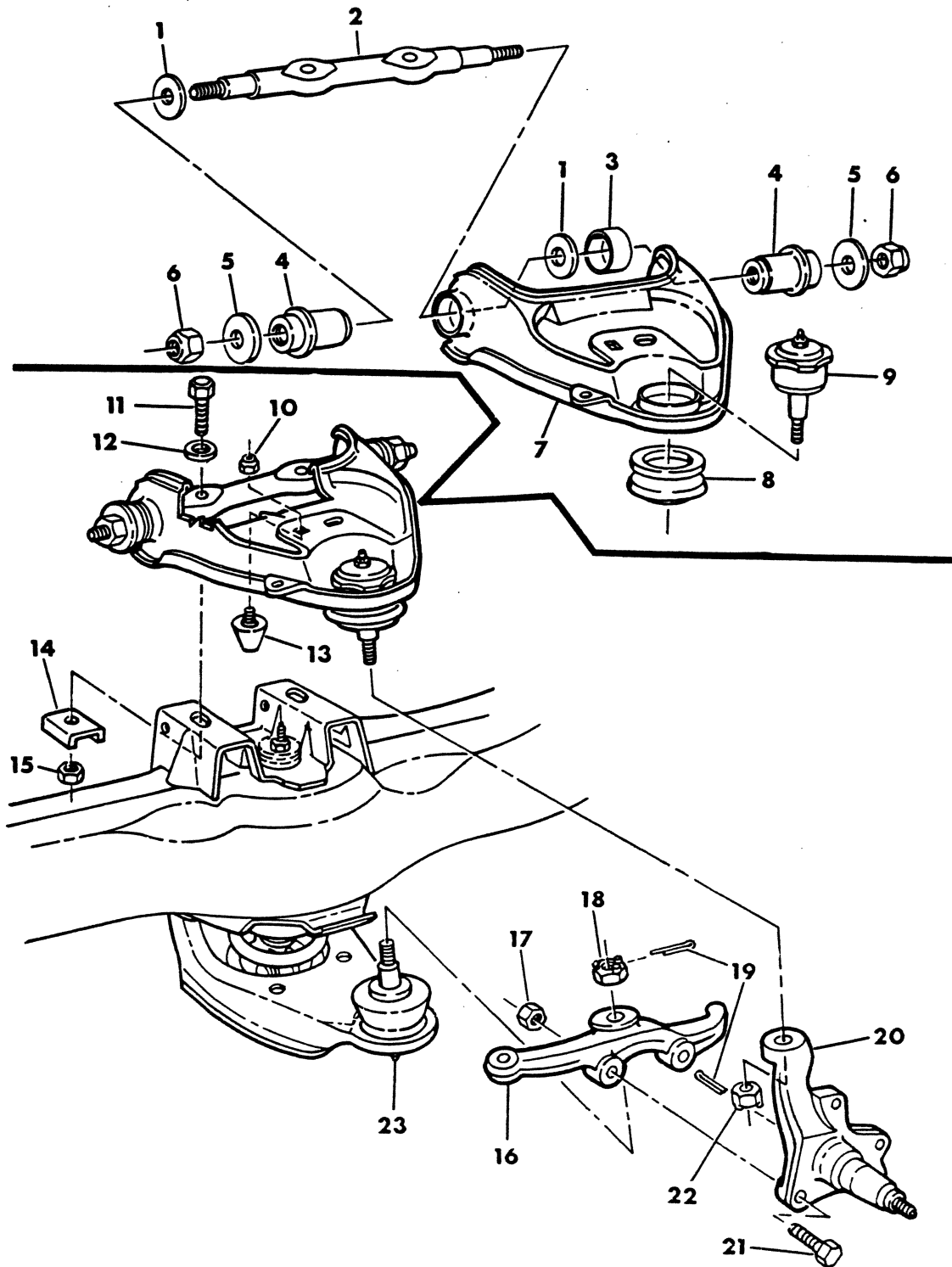
Printed in U.S.A.

June, 1982



ARM & STRG.KNUCKLE,FRONT SUSP. UPPER CONTROL  
CB-MB,B100-200-300-1979-80-81

8317 052A



ITEM	PART NUMBER	QTY	MODEL	DESCRIPTION
<b>ARM &amp; STRG.KNUCKLE,FRONT SUSP. UPPER CONTROL</b>				
<b>CB-MB,B100-200-300-1979-80-81</b>				
1		4		WASHER,Pivot Bar-Serviced In Item 7-Up To Approx 5-15-79
1	4167 415	4		WASHER,Pivot Bar-After Approx.5-15-79
2		2		BAR-Serv.In Assy.-Item 7
3		2		SLEEVE-Serv.In Assy.-Item 7
4	4032 190	4	B1-2	BUSHING,Upper Control Arm-with 3300 lb.axle-up to approx.1-15-80
4	4213 118	4	B1-2,MB2	BUSHING,Upper Control Arm-with 3300 lb.axle-after approx.1-15-80
4	4032 191	4	B3,CB-MB3-4	BUSHING,Upper Control Arm-With 3600,4000 Lb. Axle-up to approx.1-15-80
4	4213 119	4	B3,CB-MB3-4	BUSHING,Upper Control Arm-With 3600,4000 Lb. Axle-after approx.1-15-80
5	4032 192	4		RETAINER,Upper Control Arm Bushing
6	152 354	4		NUT,Upper C/Arm Pivot Bar-Up To Approx.6-4-79
6	6031 718	4		NUT,Upper C/Arm Pivot Bar-After Approx.6-4-79
7	4210 872-3	1		ARM ASSY.,Upper Control-With 3300 Lb. Axle
7	4210 874-5	1		ARM ASSY.,Upper Control-With 3600 Lb. Axle
7	4210 876-7	1		ARM ASSY.,Upper Control-With 4000 Lb. Axle
8	3722 449	2		SEAL,Upper Control Arm Ball Joint-With 3300,3600 lb.axle
8	3402 950	2		SEAL,Upper Control Arm Ball Joint-With 4000 Lb. Axle
9	2808 394	2		BALL JOINT,Upper-With 3300,3600 Lb. Axle
9	3744 929	2		BALL JOINT,Upper-With 4000 Lb. Axle
10	152 344	2		NUT,Jounce Bumper Bolt
11	6031 638	4		BOLT,Control Arm Pivot Bar-Up To 11-1-79
11	6031 842	4		BOLT,Control Arm Pivot Bar-After 11-1-79
12	121 574	4		WASHER
12	6028 776	4		LOCKWASHER,Control Arm Pivot Bar Bolt-1980
13	4014 050	2		BUMPER,Upper Control Arm
14	4115 841	4		NUT,RETAINER
15	4117 796	4		NUT,Pivot Bar Bolt
16	4036 578-9	1		ARM,strg.knuckle-With 3300,3600 Lb.Axle-up to approx.12-1-80
16	4237 882-3	1		ARM,strg.knuckle-With 3300,3600 Lb.Axle-after approx.12-1-80
16	4032 702-3	1		ARM,Steering Knuckle-With 4000 Lb. Axle
17	152 353	4		NUT,Knuckle To Arm Bolt-With 3300,3600 LB.Axle
17	152 355	4		NUT,Knuckle To Arm Bolt-With 4000 Lb. Axle
18	1671 405	2		NUT,Ball Joint Stud-With 3300,3600 Lb. Axle
18	9425 133	2		NUT,Ball Joint Stud-With 4000 Lb. Axle
19				PIN,Cotter
20	3634 908-9	1		KNUCKLE,Steering-With 3300 Lb. Axle-1979-80
20	4164 876-7	1		KNUCKLE,Steering-With 3300 Lb. Axle-1981
20	4036 542-3	1		KNUCKLE,Steering-With 3600 Lb. Axle
20	3634 916-7	1		KNUCKLE,Steering-With 4000 Lb. Axle
21	6030 009	4		BOLT,Knuckle To Arm-With 3300,3600 Lb.Axle
21	6030 063	4		BOLT,Knuckle To Arm-With 4000 Lb. Axle
22	273 912	2		NUT,Ball Joint Stud-With 3600 Lb. Axle
	1671 405	2		NUT,Ball Joint Stud-With 4000 Lb. Axle
23	6030 099	AR		OILER,Ball Joint-Upper or Lower

<b>LIGHT</b>	A = All Sport Utility (Ramcharger).	B = All Compact Models.	D = Conventional Cab.
<b>DUTY</b>	AD = 2 Wheel Drive Only (Ramcharger).	CB-MB = Compact Front Section Only.	W = Conventional Cab 4 Wheel Drive.
<b>CODES:</b>	AW = 4 Wheel Drive Only (Ramcharger).	P = Forward Control Chassis.	M = Motor Home.

**MEDIUM-HEAVY CODES:** XNT = Low Cab Forward. D = Conventional Cab. S = School Bus. W = 4-Wheel Drive.

AR=Use as Required

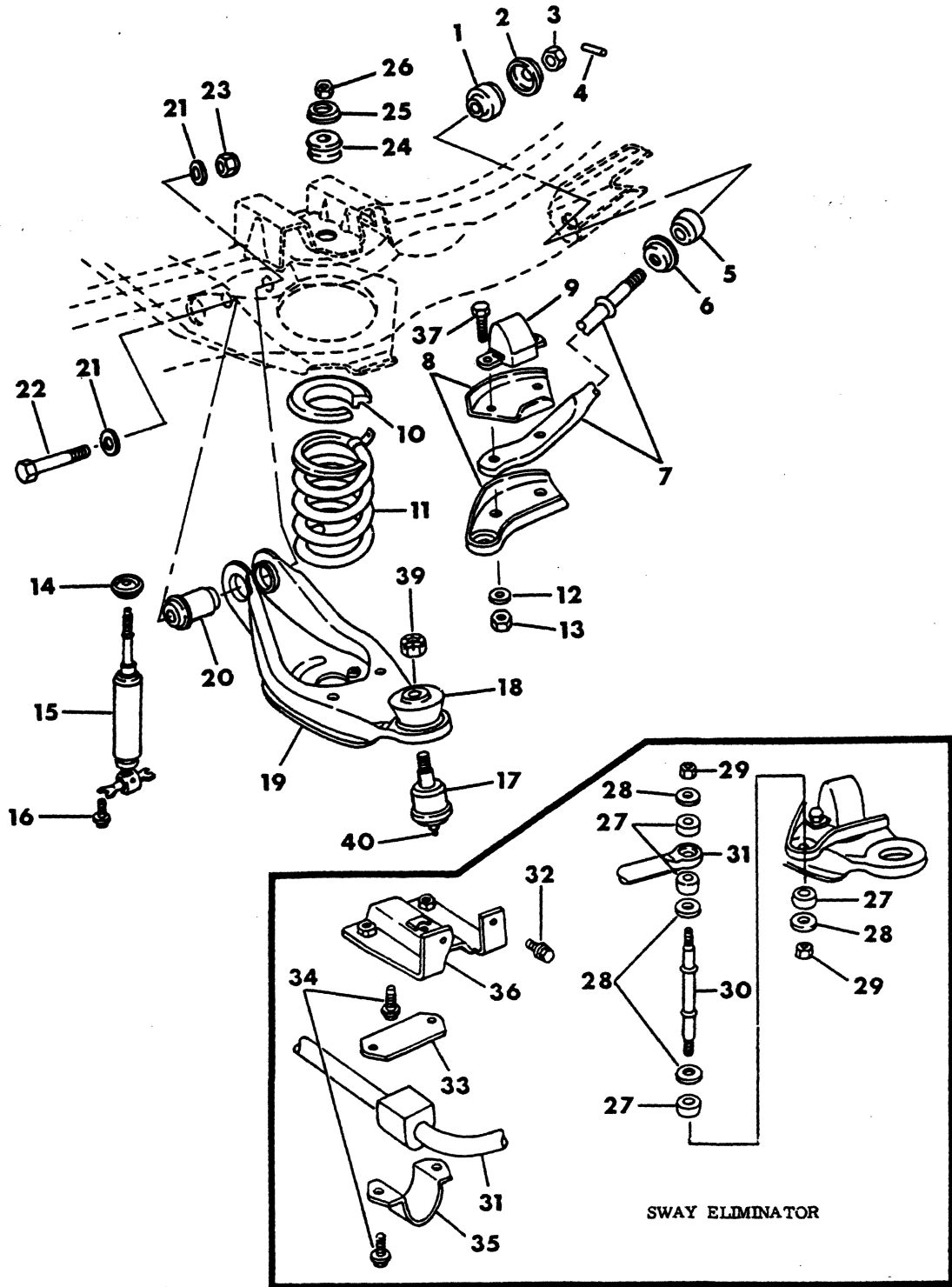
# = New Part Number

Printed in U.S.A.

June, 1982

## ARM, COIL SPRG., SHOCK & SWAY BAR, FRT. SUSP. LOWER CON TROL-B100-200-300, CB-MB-1979-80-81

8317 053A





ITEM	PART NUMBER	QTY	MODEL	DESCRIPTION
<b>ARM,COIL SPRG.,SHOCK &amp; SWAY BAR,FRT.SUSP.LOWER CON TROL-B100-200-300,CB-MB-1979-80-81</b>				
1	4037 659	2		BUSHING,Strut Rear-With 3300,4000 lb. axle
1	4037 660	2		BUSHING,Strut Rear-With 3600 Lb. Axle
2	3898 897	2		RETAINER-Strut Rear Bushing
3	152 354	2		NUT,Control Arm Strut-Up To Approx.6-4-79
3	6031 718	2		NUT,Control Arm Strut-After Approx.6-4-79
4	6027 381	2		PIN,Control Arm Strut
5	3898 817	2		BUSHING,Strut Front-With 3300 Lb. Axle
5	4036 909	2		BUSHING,Strut Front-With 3600 Lb. Axle
5	3898 974	2		BUSHING,Strut Front-With 4000 Lb. Axle
6	3898 896	2		RETAINER,Strut Front Bushing
7	4032 322	2		STRUT,Lower Control Arm
8	4032 470-1	1		BRACKET,Jounce Bumper-Without Sway Bar
8	4116 590-1	1		BRACKET,Jounce Bumper-With Sway Bar
9	4112 343	2		BUMPER-With 3300 Lb. Axle
9	4112 342	2		BUMPER-With 3600,4000 Lb. Axle
10	4089 580	2		ISOLATOR,Coil Spring Upper
11				SPRING,Front Susp. Coil
<b>NOTE: Spring Ratings Will Now Be Listed As Pad/Ground Capacity</b>				
	4116 982	2	B1-2	940/1250 Lb.-Up To Approx.12-15-78
	4116 988	2	B1-2	1615/1750 Lb.-After Approx.12-15-78
	4116 988	2	B3,CB-MB	1515/1680 Lb.-Up To Approx.12-15-78
	4164 858	2	B3,CB-MB3	1685/1850 Lb.-After Approx.12-15-78
	4164 859	2	B3,CB-MB3	1735/1900 Lb.-After Approx.12-15-78
	4116 983	2	B1-2	1145/1280 Lb.
	4116 984	2	B1-2	1250/1385 Lb.
	4116 984	2	B3,CB-MB2-3	1170/1335 Lb.
	4116 985	2	B1-2	1355/1490 Lb.
	4116 985	2	B3,CB-MB2-3	1270/1435 Lb.
	4116 986	2	B1-2	1455/1590 Lb.
	4116 986	2	B3,CB-MB3	1365/1530 Lb.
	4116 989	2	B3	1625/1800 Lb.
	4116 990	2	CB-MB3-4	1810/2000 Lb.
	4116 987	2	B1-2	1515/1650 Lb.
	4116 987	2	B3,CB-MB	1420/1585 Lb.
	4086 492	2	CB-MB3-4	1825/2000 Lb.
12				WASHER-Not Serviced
13	6029 982	4		NUT,Strut Bolt
14	2206 925	2		RETAINER,Shock Absorber Bushing Upper
15	4131 350	2		SHOCK ABSORBER-1" Dia.-1979-80-81
15	4131 320	2		SHOCK ABSORBER-1 3/16" Dia.-1979-80-81
15	4131 321	2	B3,CB-MB3-4	SHOCK ABSORBER,H.D.,With 4000 Lb. Front Axle
16	181 088	4		SCREW,Shock Absorber
17	3837 088	2		BALL JT.PKG.,Lower Control Arm-With 3300,3600 Lb.Axle
17	3683 983	2		BALL JT.PKG.,Lower Control Arm-With 4000 Lb.Axle
18	3402 950	2		SEAL,Ball Joint-With 3300,3600 Lb. Axle
18	3632 820	2		SEAL,Ball Joint-With 4000 Lb. Axle-Serviced In 3683983 Ball Joint Package
19	4164 462-3	1		ARM,Lower Control-With 3300 Lb. Axle-Up TO Approx.5-21-79
19	4210 584-5	1		ARM ASSY.,lower control-with 3300 lb.axle-after approx.5-21-79

**LIGHT** A = All Sport Utility (Ramcharger).

B = All Compact Models.

D = Conventional Cab.

**DUTY** AD = 2 Wheel Drive Only (Ramcharger).

CB-MB = Compact Front Section Only.

W = Conventional Cab 4 Wheel Drive.

**CODES:** AW = 4 Wheel Drive Only (Ramcharger).

P = Forward Control Chassis.

M = Motor Home.

**MEDIUM-HEAVY CODES:** XNT = Low Cab Forward. D = Conventional Cab. S = School Bus. W = 4-Wheel Drive.

AR=Use as Required

# =New Part Number

Printed in U.S.A.

June, 1982

# 1978-81 LIGHT DUTY TRUCK PARTS CATALOG

ITEM	PART NUMBER	QTY	MODEL	DESCRIPTION
------	-------------	-----	-------	-------------

**ARM, COIL SPRG., SHOCK & SWAY BAR, FRT. SUSP. LOWER CONTROL-B 100-200-300, CB-MB-1979-80-81**

19	4210 584-5	1	MB2, B1-2	ARM ASSY., lower control
19	4164 464-5	1	B1-2	ARM ASSY., lower control-(complete)
19	4164 464-5	1		ARM ASSY., lower control-with 3600 lb. axle
19	4036 808-9	1		ARM ASSY., lower control-with 4000 lb. axle
20	4036 569	2		BUSHING-With 3300, 3600 Lb. Axle
20	4031 862	2		BUSHING-With 4000 Lb. Axle
21				WASHER-Not Serviced
22	6031 332	2		BOLT, Control Arm Bushing
23	152 355	2		NUT, Control Arm Bushing Bolt
24	4039 137	4		BUSHING, Shock Upper Mounting
25	2206 925	2		RETAINER, Shock Upper
26	114 942	2		NUT
27				INSULATOR-Serviced In Item A
28				RETAINER-Serviced In Item A
29				NUT-Serviced In Item A
30	4116 589	2		LINK, Sway Eliminator Shaft
31	4116 582	1		SHAFT, Sway Eliminator
32				SCREW-Not Serviced
33	4116 588	2		PLATE, Sway Eliminator Shaft Bushing Retainer
34	9422 041	6		BOLT, Sway Elim. Shaft Bushing Retainer
35	2535 173	2		RETAINER, Sway Elim. Shaft Bushing
36	4116 584-5	1		BRACKET, Sway Eliminator Shaft Mounting
37	6031 570	4		BOLT, Jounce Bumper To Lower Control Arm
38	6030 099	AR		OILER, Ball Joint-Upper & Lower
39	1671 405	2		NUT, Ball Joint Stud-With 3300, 3600 Lb. Axle
39	9425 133	2		NUT, Ball Joint Stud-With 4000 Lb. Axle
40	6030 099	2		OILER, Ball Joint-Upper or Lower

NOTE: The Following Parts Are Not Illustrated.

	6030 369	AR		BOLT, Turn Stop Bracket
	4116 599	2		Spacer, Sway Eliminator Mounting Bracket
	4117 051	2		Bushing, Sway Eliminator Shaft
A	3879 212	AR		Sway Eliminator Parts Package
				Consists Of:
				2----- Insulator
				1-0118614 Nut
				2----- Retainer

<b>LIGHT DUTY</b>	A = All Sport Utility (Ramcharger).	B = All Compact Models.	D = Conventional Cab.
<b>CODES:</b>	AD = 2 Wheel Drive Only (Ramcharger).	CB-MB = Compact Front Section Only.	W = Conventional Cab 4 Wheel Drive.
	AW = 4 Wheel Drive Only (Ramcharger).	P = Forward Control Chassis.	M = Motor Home.

**MEDIUM-HEAVY CODES:** XNT = Low Cab Forward. D = Conventional Cab. S = School Bus. W = 4-Wheel Drive.

AR=Use as Required

# = New Part Number

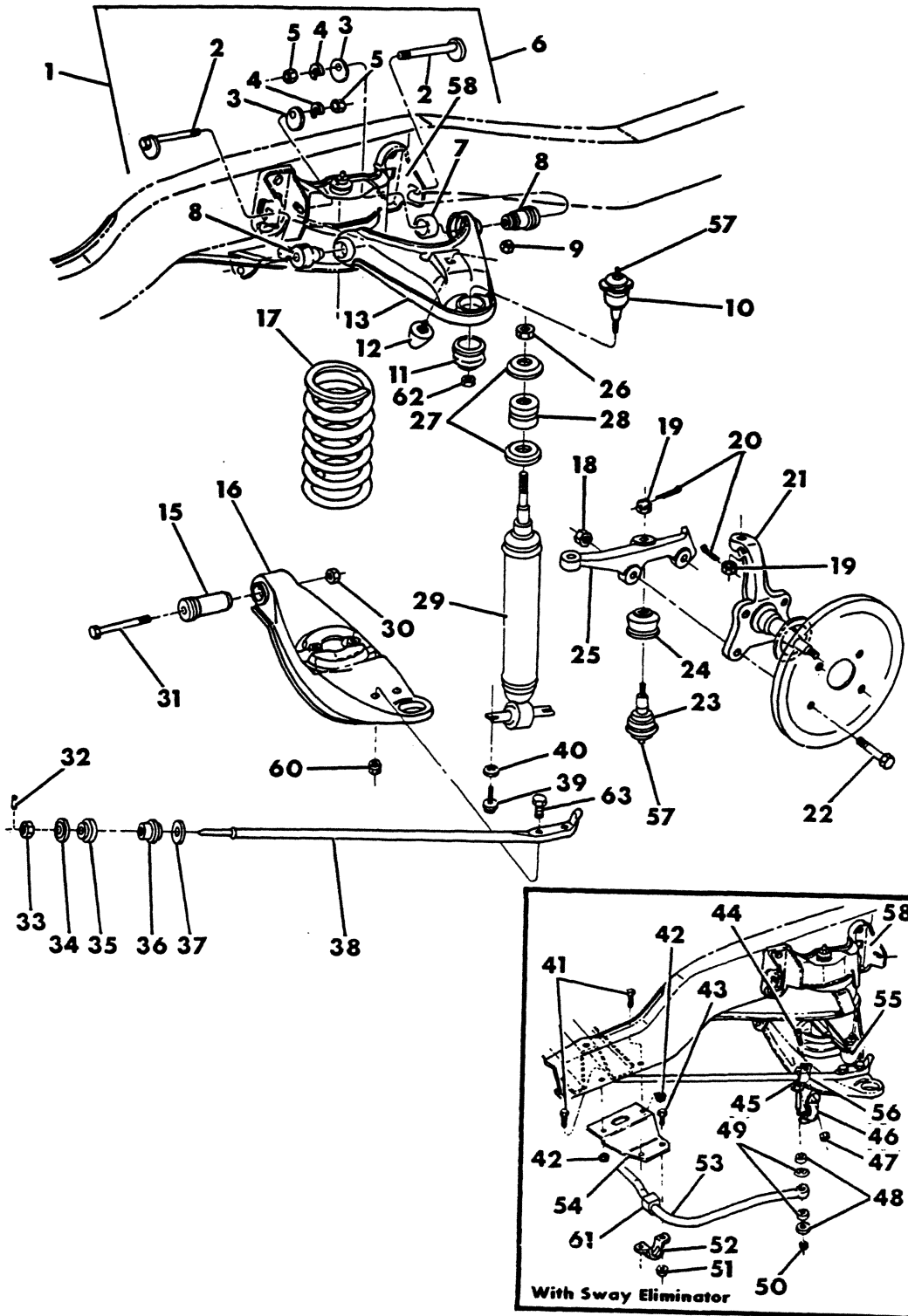
Printed in U.S.A.

June, 1982



8317 055

## SPRING, FRONT SUSPENSION COIL SHOCK ABSORBER & SWAY ELIMINATOR AD1, D100-200-300-400



ITEM	PART NUMBER	QTY	MODEL	DESCRIPTION
<b>SPRING,FRONT SUSPENSION COIL SHOCK ABSORBER &amp; SWAY ELIMINATOR AD1,D100-200-300-400</b>				
1	2808 445	1		CAM PACKAGE-Consists Of Items 2,3,4,5,6
2		4		CAM and BOLT-Serviced In Item 1 & 6
3		4		CAM-Serviced In Item 1 & 6
4	123 174	4		LOCKWASHER-Also Serviced In Item 6
5	6030 998	4		NUT Control Arm Cam Bolt-Also Serviced In Item 6
6	3621 931	1		CAM and BSHG. PKG.-Consists Of Items 2,3,4,5,7,8
7	3492 782	4		SLEEVE-Also Serviced In Item 6
8	2269 124	4		BUSHING-Also Serviced In Item 6
9	152 344	2		NUT,Upper Bumper-3/8-16
10	2808 394	2		BALL JOINT PKG.,Upper Control Arm-With 3000,3300,3600 Lb. Axle
10	3744 929	2		Ball Joint Package-Upper Control Arm-With 4000 Lb. Axle
11	3722 449	2		SEAL,Upper Control Arm Ball Joint-With 3000,3300,3600 Lb. Axle
11	3402 950	2		SEAL,Upper Control Arm Ball Joint-With 4000 Lb. Axle
12	4014 050	2		BUMPER,Upper Control Arm
13	3492 122-3	1		ARM w/ REINFORCEMENT,Front Susp.Upper Control
15	2961 123	2		BUSHING,Lower Control Arm-With 3000,3300,3600 Lb. Axle
15	3492 128	2		BUSHING,Lower Control Arm-With 4000 Lb. Axle
16	3492 860-1	1		ARM with REINFORCEMENT,Lower Control-With 3000,3300,3600 Lb. Axle
16	3492 126-7	1		ARM,Lower Control-With 4000 Lb. Axle
17				SPRING,Coil

NOTE: Spring Ratings Will Now Be Listed As Pad/Ground CAPACITY

	3492 933	2	D1,AD1	1200/1340 Lb.
	3497 931	2	D1-2,AD1	1300/1440 Lb.
	3492 934	2	D1	1400/1540 Lb.
	3492 934	2	D2	1400/1565 Lb.
	3492 935	2	D1	1475/1615 Lb.
	3492 935	2	D2	1475/1645 Lb.
	3496 340	2	D2-3-4	1500/1750 Lb.
	3492 936	2	D1-2	1550/1800 Lb.
	3496 341	2	D2-3-4	1725/1915 Lb.
18	273 912	AR	D1-2,AD1	NUT,Knuckle To Arm Bolt-5/8-18
18	152 355	AR	D2-3-4	NUT,Knuckle To Arm Bolt-3/4-16
18	152 353	AR	D1-2,AD1	NUT,Knuckle To Arm Bolt-5/8-18
19	273 912	AR		NUT,Ball Joint Stud Upper-5/8-18
19	1671 405	2		NUT,Ball Joint Stud-Lower-With 3000,3300,3600 Lb. Axle
19	9425 133	2		NUT,Ball Joint Stud Lower-With 4000 Lb. Axle
20		AR		PIN-Not Serviced
21	3634 908-9	1	D1,AD1	KNUCKLE,Steering-With 3000,3300 Lb. Axle-1978-79-80
21	4164 876-7	1	D1,AD1	KNUCKLE,Steering-With 3000,3300 Lb. Axle-1981
21	3634 912-3	1	D2	With 3300 Lb. Axle-1978
21	4036 542-3	1	D2	With 3300 Lb. Axle-1979-80-81
21	3634 916-7	1	D2-3-4	KNUCKLE,Steering-1978
21	3634 916-7	1	D2-3-4	KNUCKLE,Steering-With 4000 Lb. Axle-1979-80-81
22	6030 009	4		BOLT,Strg.Knuckle To Arm-With 3000,3300,3600 Lb. Axle
22	6030 063	4		BOLT,Strg.Knuckle To Arm-With 4000 Lb. Axle
23	3837 088	2		BALL JOINT PACKAGE,Lower Control Arm-With 3000,3300,3600 Lb. Axle
23	3683 983	2	D2-3-4	Ball Joint Package,Lower Control Arm-With 4000 Lb. Axle
24	3402 950	2	AD1,D1-2	SEAL,Lower Control Arm Ball Joint-With 3000,3300 lb. axle
24	2462 886	2	D2	131,149" W.B.,w/H.D. Pkg.-Also In Item 23

LIGHT A = All Sport Utility (Ramcharger).

B = All Compact Models.

D = Conventional Cab.

DUTY AD = 2 Wheel Drive Only (Ramcharger).

CB-MB = Compact Front Section Only.

W = Conventional Cab 4 Wheel Drive.

CODES: AW = 4 Wheel Drive Only (Ramcharger).

P = Forward Control Chassis.

M = Motor Home.

MEDIUM-HEAVY CODES: XNT = Low Cab Forward. D = Conventional Cab. S = School Bus. W = 4-Wheel Drive.

AR=Use as Required

# =New Part Number

Printed in U.S.A.

June, 1982

# 1978-81 LIGHT DUTY TRUCK PARTS CATALOG

ITEM	PART NUMBER	QTY	MODEL	DESCRIPTION
<b>SPRING,FRONT SUSPENSION COIL SHOCK ABSORBER &amp; SWAY ELIMINATOR AD1,D100-200-300-400</b>				
24	2462 886	2	D2	165" W.B.-Also In Item 23-1978
24	2462 886	2	D3-4	All W.B.-Also In Item 23-1978
24			D2-3-4	Seal,Lower Control Arm Ball Joint W/4000 Lb. Axle-serviced in item 23-3683983 ball jt.pkg.
25	3634 924-5	1	AD1-D1-2	ARM,Strg.Knuckle-1978
25	4088 048-9	1	AD1,D1-2	ARM,Strg.Knuckle-With 3000,3300 Lb.Axle-1979-80-81
25	3638 172-3	1	D2-3-4	ARM,Steering Knuckle-With 4000 Lb. Axle-1979-80-81
26	114 942	AR	D1-2-3-4	NUT-3/8-24
27	2206 925	AR		RETAINER,Shock Absorber Upper
28	2206 923	AR		BUSHING
29	3837 029	2	AD1,D1-2	SHOCK ABSORBER-Light Duty-1978
29	3837 031	2	D2-3-4	SHOCK ABSORBER-Light Duty-With 4000 Lb.Axle-1978
29	4186 011	2	AD1,D1-2	Shock Absorber,Light Duty-With 3000,3300 Lb. Axle-1979 & 81
29	4086 417	2	AD1,D1-2	Shock Absorber,Heavy Duty-With 3000,3300 Lb. Axle-1979 & 81
29	4086 420	2	D2-3-4	Shock Absorber,Heavy Duty-W/4000 Lb.Axle-1980-81
29	3837 031	2	D2-3-4	Shock Absorber,Light Duty-W/4000 Lb. Axle-1980-81
30	152 353	2	D1-2,AD1	NUT,Lower Control Arm Bushing Bolt-5/8-18
30	152 355	2	D2-3-4	NUT,Lower Control Arm Bushing Bolt-3/4-16
31	6029 377	2	D1-2,AD1	BOLT,Lower Control Arm-5/16-18 x 4.50
31	6029 614	2	D2-3-4	BOLT,Lower Control Arm-3/4-16 X 4.75
32	6027 381	2		PIN,Strut Spring
33	152 354	2		NUT,Strut-3/4-10
34	3633 112	2		RETAINER,Strut Front Bushing
35	3491 238	2		BUSHING,strut front
36	3491 239	2		BUSHING,strut rear
37	3633 126	2		RETAINER,Rear-Bronze Color
38	3632 976-7	1		STRUT,Lower Control Arm
39	6025 355	AR		SCREW-5/16-18 x 1.25
40	120 393	AR		WASHER
41	9418 275	AR		BOLT-7/16-14 x 1.50
42	152 346	AR		NUT-7/16-14
43	9425 118	4		BOLT,Eliminator Shaft Bushing Retainer
44	9425 118	4		BOLT,Sway Eliminator Link
45	3637 619	2		LINK Assy.,Sway Eliminator Shaft
46	3637 620	2		RETAINER,Sway Eliminator Shaft Link Insulator
47	118 614	AR		NUT-5/16-18
48				Retainer-Refer To Item 59
49				Insulator-Refer To Item 59
50	118 614	2		Nut-Also In Item 59
51	152 342	AR		NUT,Lock- 5/16-18
52	2535 173	2		RETAINER,Sway Eliminator Shaft Bushing
53	3637 617	1		SHAFT,sway eliminator-light duty
54	3640 090-1	1		BRACKET,Sway Eliminator To Frame
55	3637 772	2		BUMPER,Front Suspension Jounce
56	3637 622	2		INSULATOR
57	6030 099	AR	AD,D1-2	OILER,Upper or Lower Ball Joint
58	4086 982-3	1		BRACKET,Frame Upper Control Arm And Shock Mounting
59	3879 212	1		PARTS PACKAGE,Sway Eliminator Consists Of:

<b>LIGHT DUTY CODES:</b>	A = All Sport Utility (Ramcharger).	B = All Compact Models.	D = Conventional Cab.
	AD = 2 Wheel Drive Only (Ramcharger).	CB-MB = Compact Front Section Only.	W = Conventional Cab 4 Wheel Drive.
	AW = 4 Wheel Drive Only (Ramcharger).	P = Forward Control Chassis.	M = Motor Home.

**MEDIUM-HEAVY CODES:** XNT = Low Cab Forward. D = Conventional Cab. S = School Bus. W = 4-Wheel Drive.

AR=Use as Required

# =New Part Number

Printed in U.S.A.

June, 1982

ITEM	PART NUMBER	QTY	MODEL	DESCRIPTION
------	-------------	-----	-------	-------------

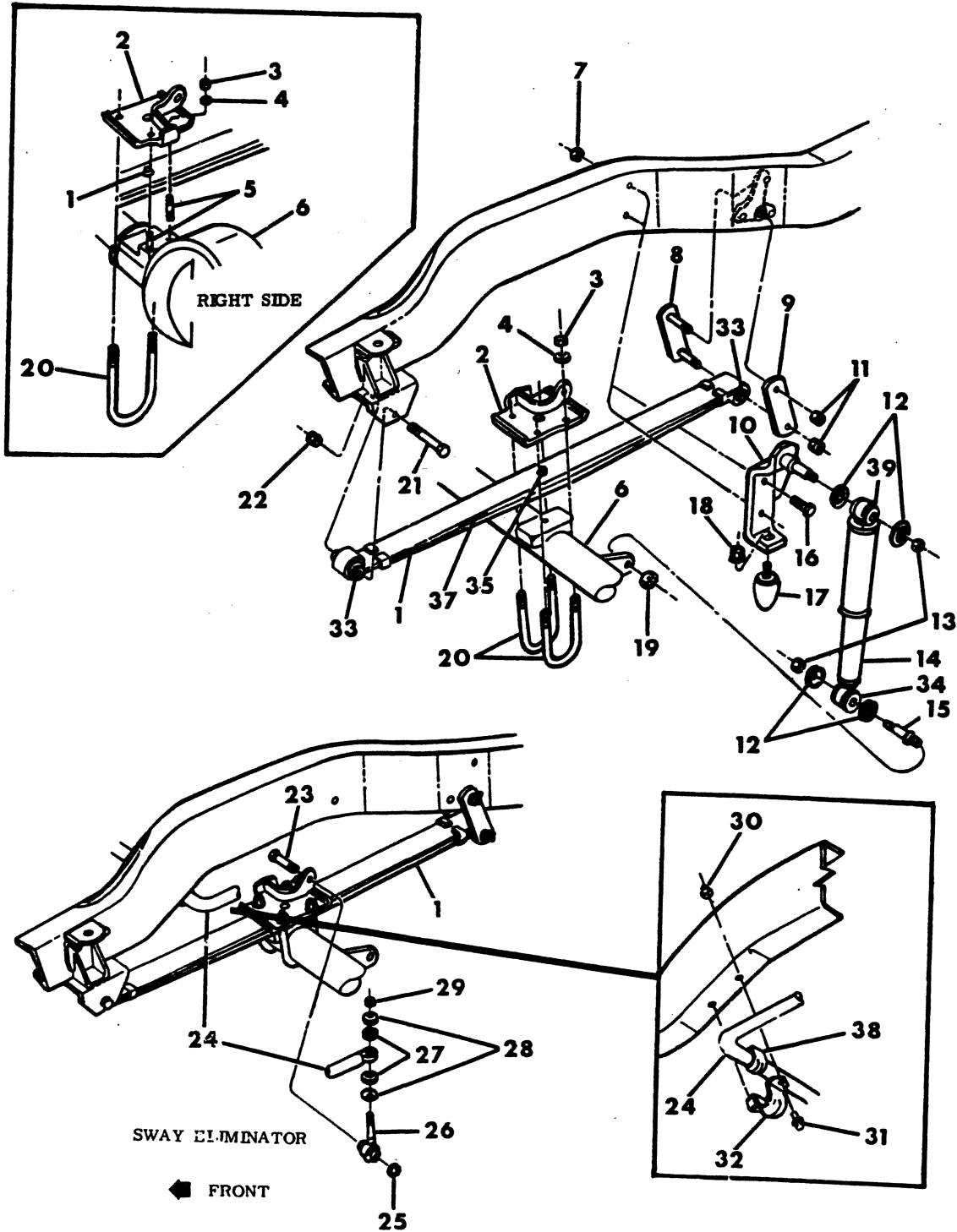
**SPRING,FRONT SUSPENSION COIL  
SHOCK ABSORBER & SWAY ELIMINATOR  
AD1,D100-200-300-400**

ITEM	PART NUMBER	QTY	DESCRIPTION
60	6029 982	4	2----- Insulators 2----- Retainer 1-0118614 Nut NUT,Strut Bolt
61	2071 572	2	BUSHING,Sway Eliminator Shaft
62	273 912	2	NUT,Ball Joint Stud-With 3000,3300,3600 Lb. Axle
62	1671 405	2	NUT,Ball Joint Stud-With 4000 Lb. Axle
63	6030 369	4	BOLT,Lower Control Arm Strut

<b>LIGHT</b>	A = All Sport Utility (Ramcharger).	B = All Compact Models.	D = Conventional Cab.
<b>DUTY</b>	AD = 2 Wheel Drive Only (Ramcharger).	CB-MB = Compact Front Section Only.	W = Conventional Cab 4 Wheel Drive.
<b>CODES:</b>	AW = 4 Wheel Drive Only (Ramcharger).	P = Forward Control Chassis.	M = Motor Home.
<b>MEDIUM-HEAVY CODES:</b> XNT = Low Cab Forward. D = Conventional Cab. S = School Bus. W = 4-Wheel Drive.			
AR=Use as Required	# = New Part Number	Printed in U.S.A.	June, 1982

8317 300C

SPRING,SHOCK ABSORBER & SWAY ELIMINATOR,FRONT LEAF  
-3500 LB.Axle-AW100





SPRINGS

1978-81 LIGHT DUTY TRUCK PARTS CATALOG

ITEM	PART NUMBER	QTY	MODEL	DESCRIPTION
------	-------------	-----	-------	-------------

SPRING,SHOCK ABSORBER & SWAY ELIMINATOR,FRONT LEAF  
-3500 LB.Axle-AW100

ITEM	PART NUMBER	QTY	MODEL	DESCRIPTION
1				FRONT SPRINGS
NOTE: Spring Ratings Will Now Be Listed As Pad/Ground Capacity				
1	3879 207	2		1150/1340 Lb.,2 Leaf
1	3894 044	2		1400/1640 Lb.,3 Leaf
1	3893 747	2		1550/1800 Lb.
1	3828 910	2		1750/2100 Lb.,3 Leaf
2	3736 812	1		PLATE,Clip-Right-1978
2	3736 811	1		PLATE,Clip-Left-1978
2	4116 995	1		PLATE,Spring Clip-Right-1979
2	4116 993	1		PLATE,Spring Clip-Left-1979
2	4116 992-3	1		PLATE,Spring Clip-With 1400,1550,1750 lb. spring at pad-1980-81
3	6029 459	8		NUT,Clip or Stud-9/16-18
4	6024 691	8		WASHER,Clip-Coned
5	6030 753	2		STUD,Front Spring Mounting-Right Side
6				AXLE,Front-Refer To Figure 2-100
7	9421 980	4		NUT,Shock Bracket Bolt-1/2-20
8	3497 486	2		SHACKLE with BOLTS
9	3497 488	2		SHACKLE without BOLTS
10	3736 982	2		BRACKET,Shock And Bumper Frame-1978
10	4117 742	2		BRACKET,Shock And Bumper Frame-1979-80-81
11	6028 512	4		NUT,Shackle Bolt-1/2-20-Upper & Lower
12	1319 555	4		RETAINER,Shock Bushing-Large Dia. Hole
12	1319 554	4		RETAINER,Shock Bushing-Small Dia. Hole
13	115 731	4		NUT,Shock Stud-1/2-20
14	3879 297	2		SHOCK ABSORBER-light duty-3500 lb. axle
14	4086 421	2		SHOCK ABSORBER-heavy duty-3500 lb. axle
15	2225 394	2		STUD,Shock Lower Pivot
16	182 778	4		BOLT,Shock Brkt. To Frame-1/2-20x1.50
17	3496 291	2		BUMPER,Front Sprng
18	6025 020	2		NUT,Bumper-3/8-16
19	272 920	2		NUT,Shock Lower Pivot Stud-3/4-16
20	3828 925	1		CLIP,Front Spring-Right
20	4036 857	2		CLIP,Front Spring-Left
21	1923 876	2		BOLT,Front Spring Eye Front-1/2-20x3.88
22	6028 512	2		NUT,Front Spring Eye Front Bolt-1/2-20
23	9418 507	2		BOLT,Sway Eliminator Link
24	3736 998	1		SHAFT,sway eliminator-light duty
24	3828 316	1		SHAFT,sway eliminator-heavy duty
25	152 478	2		NUT,Link Bolt-1/2-20
26	4036 005	2		LINK,Sway Elim.Shaft
27				Refer To Item 36
28				Refer To Item 36
29	118 614	2		NUT-Also In Item 36
30	118 614	4		NUT,Shaft Retainer
31	9425 118	4		BOLT,Shaft Retainer
32	2535 173	2		RETAINER,Elim. Shaft Bushing,W/O H.D. Sway Bar
32	3894 769	2		RETAINER,Elim. Shaft Bushing-With H.D. Sway Bar
33	1920 540	4		BUSHING,Front Spring Eye
34	1319 902	4		BUSHING,Front Shock Abs. Pivot

**LIGHT** A = All Sport Utility (Ramcharger). B = All Compact Models. D = Conventional Cab.  
**DUTY** AD = 2 Wheel Drive Only (Ramcharger). CB-MB = Compact Front Section Only. W = Conventional Cab 4 Wheel Drive.  
**CODES:** AW = 4 Wheel Drive Only (Ramcharger). P = Forward Control Chassis. M = Motor Home.

**MEDIUM-HEAVY CODES:** XNT = Low Cab Forward. D = Conventional Cab. S = School Bus. W = 4-Wheel Drive.

AR=Use as Required

# =New Part Number

Printed in U.S.A.

June, 1982

# 1978-81 LIGHT DUTY TRUCK PARTS CATALOG

SPRINGS

ITEM	PART NUMBER	QTY	MODEL	DESCRIPTION
------	-------------	-----	-------	-------------

**SPRING,SHOCK ABSORBER & SWAY ELIMINATOR,FRONT LEAF  
 -3500 LB.Axle-AW100**

35	593 805	2		BOLT,Front Spring Center-3/8-24x5
36	3879 212	1		PARTS PACKAGE,Sway Eliminator Consists Of: 2 ----- Insulators 2 ----- Retainers 1-0118614 Nut
37	3549 063	2		INTERLINER,Leaf Spring-21/2 x 5' long w/1/2" hole
38	2071 572	2		BUSHING,Sway EliminatorShaft-H.D.Sway Bar
<b>NOTE: The Following Parts Are Not Illustrated</b>				
	114 942	2		NUT,Front Spring Center Bolt
	2539 574	2		INSULATOR,spring clip
	2229 479	4		BUSHING,Shock Absorber Pivot

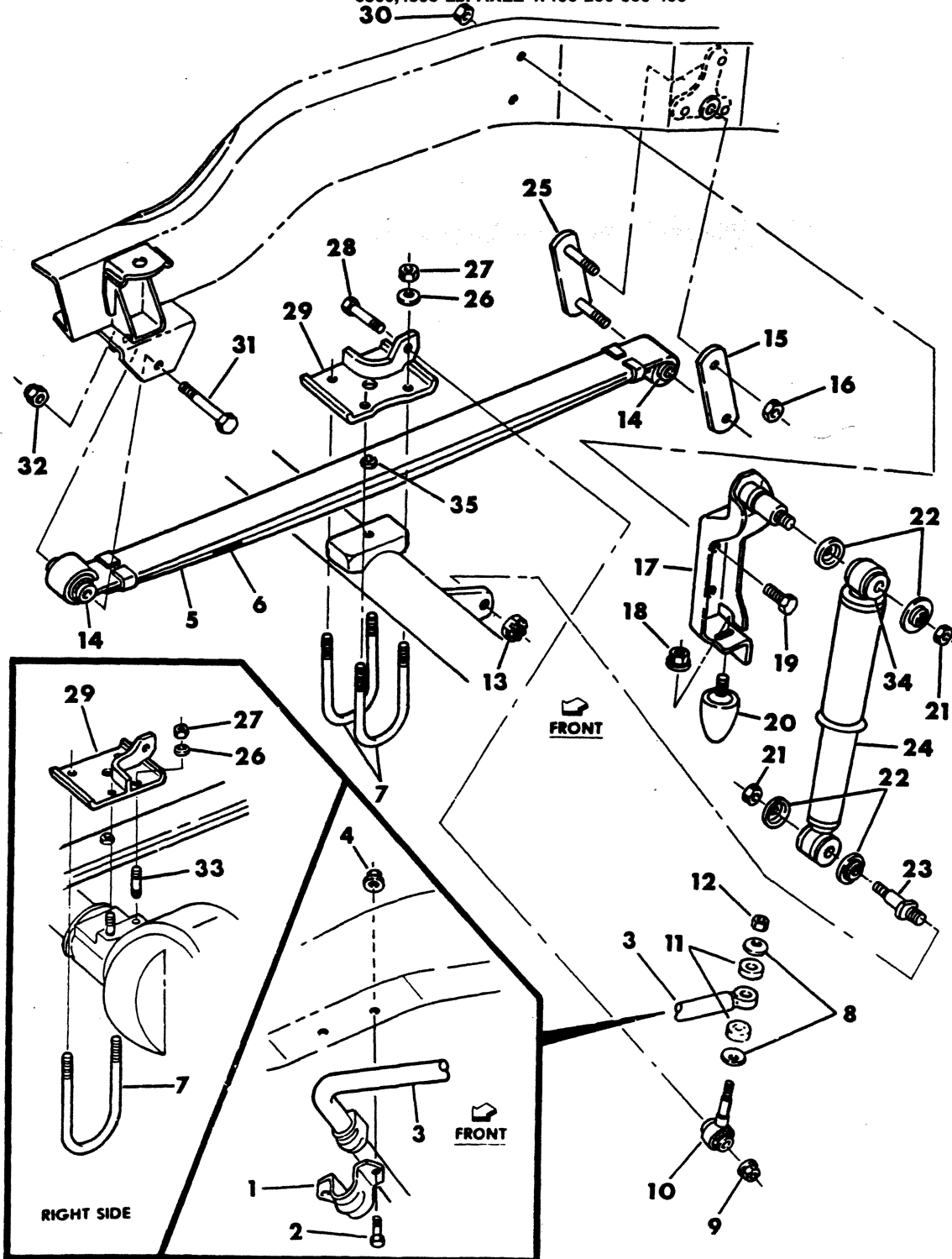
<b>LIGHT DUTY CODES:</b>	A = All Sport Utility (Ramcharger).	B = All Compact Models.	D = Conventional Cab.
	AD = 2 Wheel Drive Only (Ramcharger).	CB-MB = Compact Front Section Only.	W = Conventional Cab 4 Wheel Drive.
	AW = 4 Wheel Drive Only (Ramcharger).	P = Forward Control Chassis.	M = Motor Home.
<b>MEDIUM-HEAVY CODES:</b>	XNT = Low Cab Forward.	D = Conventional Cab.	S = School Bus.
			W = 4-Wheel Drive.



8317 400B

## SPRING, SHOCK ABSORBER & SWAY ELIMINATOR, FRONT LEAF

-3500, 4500 Lb. AXLE-W100-200-300-400



SPRINGS

1978-81 LIGHT DUTY TRUCK PARTS CATALOG

ITEM	PART NUMBER	QTY	MODEL	DESCRIPTION
<b>SPRING,SHOCK ABSORBER &amp; SWAY ELIMINATOR,FRONT LEAF</b>				
<b>-3500,4500 Lb. AXLE-W100-200-300-400</b>				
1	3894 769	2	W1-2	RETAINER,Sway Eliminator Shaft
2	9425 118	4	W1-2	BOLT,Shaft Retainer
3	3828 316	1	W1-2	SHAFT,sway eliminator-light duty
4	118 814	4	W1-2	NUT,Shaft Retainer Bolt
5				FRONT SPRING
5	3894 044	2	W1-2	1400/1640 LB.,3 Leaf
5	3893 747	2	W1-2	1550/1800 LB.,3 Leaf
5	3828 910	2	W1-2	1750/2100 LB.,3 Leaf
5	3821 852	2	W2-3-4	1900/2140 LB.,6 Leaf
5	3821 848	2	W2-3-4	1600/1840 LB.,5 Leaf
6				INTERLINER,Leaf Spring
6	3492 073	AR		2 1/2 x 2 1/2" long
6	1948 396	AR		2 1/2 x 3 1/2" long
6	3549 063	AR		2 1/2 x 5" long with 1/2" hole
7	3828 925	1		CLIP,Front Spring-Right-3500 Lb.Axle
7	4036 857	2		CLIP,Front Spring-Left-3500 Lb.Axle
7	4042 544	1		CLIP,Front Spring-Right 4500 Lb. Axle
7	3492 067	2		CLIP,Front Spring-Left-4500 Lb. Axle
8			W1-2	RETAINER-3500 Lb.-Refer To item 36
9	152 478	2	W1-2	NUT,Link Bolt-1/2-13,3500 Lb. Axle
10	4036 005	2	W1-2	LINK,Sway Eliminator Shaft-3500 Lb.
11			W1-2	INSULATOR-3500 Lb.Axle-Refer To item 36
12	118 814	2	W1-2	NUT-3500 Lb.Axle-Also In item 36
13	272 920	2		NUT,Pivot Stud-3/4-16
14	1920 540	4		BUSHING,Front Spring Eye
15	3497 488	2	W1-2-4	SHACKLE without BOLTS
15	4112 228	2	W3	SHACKLE without BOLTS
16	6028 512	4		NUT,Shackle Bolt-1/2-20-Upper & Lower
17	3736 982	2		BRACKET,Shock And Bumper Frame-1978
17	4117 742	1		BRACKET,Shock And Bumper Frame-1979-80-81
18	6025 020	2		NUT,Bumper-3/8-16
19	182 778	4		BOLT,Shock Bracket To Frame
20	3496 291	2		BUMPER,Front Spring
21	115 731	4		NUT,Shock Stud-1/2-20
22	1319 555	4		RETAINER,Shock Bushing-Large Dia. Hole
22	1319 554	4		RETAINER,Shock Bushing-Small Dia. Hole
23	2225 394	2		STUD,Shock Lower Pivot
24	3879 297	2	W1-2	SHOCK ABSORBER-light duty-3500 lb. axle
24	4086 421	2		SHOCK ABSORBER,Front-Heavy Duty
25	3497 486	2	W1-2-4	SHACKLE with BOLTS
25	4112 227	2	W3	SHACKLE with BOLTS
25	4116 574	2	W3	SHACKLE with BOLT-Inner-With H.D.Frame-1980-81
25	4112 227	2	W3	SHACKLE with BOLT-Outer-With H.D.Frame-1980-81
26	6024 691	8		WASHER,Clip-Coned
27	6029 459	8		NUT,Clip or Stud-9/16-18
28	9418 507	2	W1-2	BOLT,Sway Elim.Link
29	3736 812	1	W1-2	PLATE,Clip Seat-3500 Lb.Axle-Right-1978
29	4036 856	1	W1-2	PLATE,Clip Seat-3500 Lb. Axle-Left-1978
29	3821 860-1	1	W2-3-4	PLATE,Clip Seat-4500 Lb. Axle-1978

<b>LIGHT</b>	A = All Sport Utility (Ramcharger).	B = All Compact Models.	D = Conventional Cab.
<b>DUTY</b>	AD = 2 Wheel Drive Only (Ramcharger).	CB-MB = Compact Front Section Only.	W = Conventional Cab 4 Wheel Drive.
<b>CODES:</b>	AW = 4 Wheel Drive Only (Ramcharger).	P = Forward Control Chassis.	M = Motor Home.

**MEDIUM-HEAVY CODES:** XNT = Low Cab Forward. D = Conventional Cab. S = School Bus. W = 4-Wheel Drive.

AR=Use as Required

# = New Part Number

Printed in U.S.A.

June, 1982

# 1978-81 LIGHT DUTY TRUCK PARTS CATALOG

ITEM	PART NUMBER	QTY	MODEL	DESCRIPTION
<b>SPRING,SHOCK ABSORBER &amp; SWAY ELIMINATOR,FRONT LEAF</b>				
<b>-3500,4500 Lb. AXLE-W100-200-300-400</b>				
29	4116 995	1	W1	PLATE,Clip Seat-Right-1979-80
29	4116 993	1	W1	PLATE,Clip Seat-Left-1979-80
29	4116 995	1	W2	PLATE,Clip Seat-Right-With 1640,1800,2100 Lb. Spring At Ground Capacity-1979-80
29	4116 993	1	W2	PLATE,Clip Seat-Left-With 1640,1800,2100 Lb.SpringAt Ground Capacity-1979-80
29	4116 994	1	W2	PLATE,Clip Seat-Right-With 1840,2140 Lb.Spring At Ground Capacity-1979
29	4116 992	1	W2	PLATE,Clip Seat-Left-With 1840,2140 Lb. Spring At Ground Capacity-1979
29	4116 994	1	W2-3-4	PLATE,Clip Seat-Right,with 1600,1900 lb.spring at pad-1979-80
29	4116 992	1	W2-3-4	PLATE,Clip Seat-Left,with 1600,1900 lb. spring at pad-1979-80
29	4116 992-3	1	W1-2	PLATE,spring clip-with 1400,1550,1750 lb. spring at pad-1980-81
29	4116 994-5	1	W2-3-4	PLATE,Spring Clip-With 1600,1950 Lb. Spring At Pad-1980-81
30	9421 980	4		NUT,Shock Bracket Bolt-1/2-20
31	1923 876	2		BOLT,Front Spring Eye Front-1/2-20 x 3.88
32	6028 512	2		NUT,Spring Eye Bolt-1/2-20
33	6030 753	2	W1-2	STUD,Front Spring Mtg.-Right Side-3500 Lb.Axle
33	6030 758	2	W2-3-4	STUD,Front Spring Mtg.-Right Side-4500 Lb. Axle
34	2229 479			BUSHING,Shock Absorber Pivot
35	593 805	2		BOLT,Front Spring Center
36	3879 212	1	W1-2	PARTS PACKAGE,Sway Eliminator
				Consists Of:
				2----- Insulators
				2----- Retainers
				1-0118614 Nut

NOTE: The Following Parts Are Not Illustrated

2539 574	2	W1-2	INSULATOR,Spring Clip
114 942	2		NUT,Front Spring Center Bolt

<b>LIGHT DUTY CODES:</b>	A = All Sport Utility (Ramcharger).	B = All Compact Models.	D = Conventional Cab.
	AD = 2 Wheel Drive Only (Ramcharger).	CB-MB = Compact Front Section Only.	W = Conventional Cab 4 Wheel Drive.
	AW = 4 Wheel Drive Only (Ramcharger).	P = Forward Control Chassis.	M = Motor Home.

**MEDIUM-HEAVY CODES:** XNT = Low Cab Forward. D = Conventional Cab. S = School Bus. W = 4-Wheel Drive.

AR=Use as Required

# = New Part Number

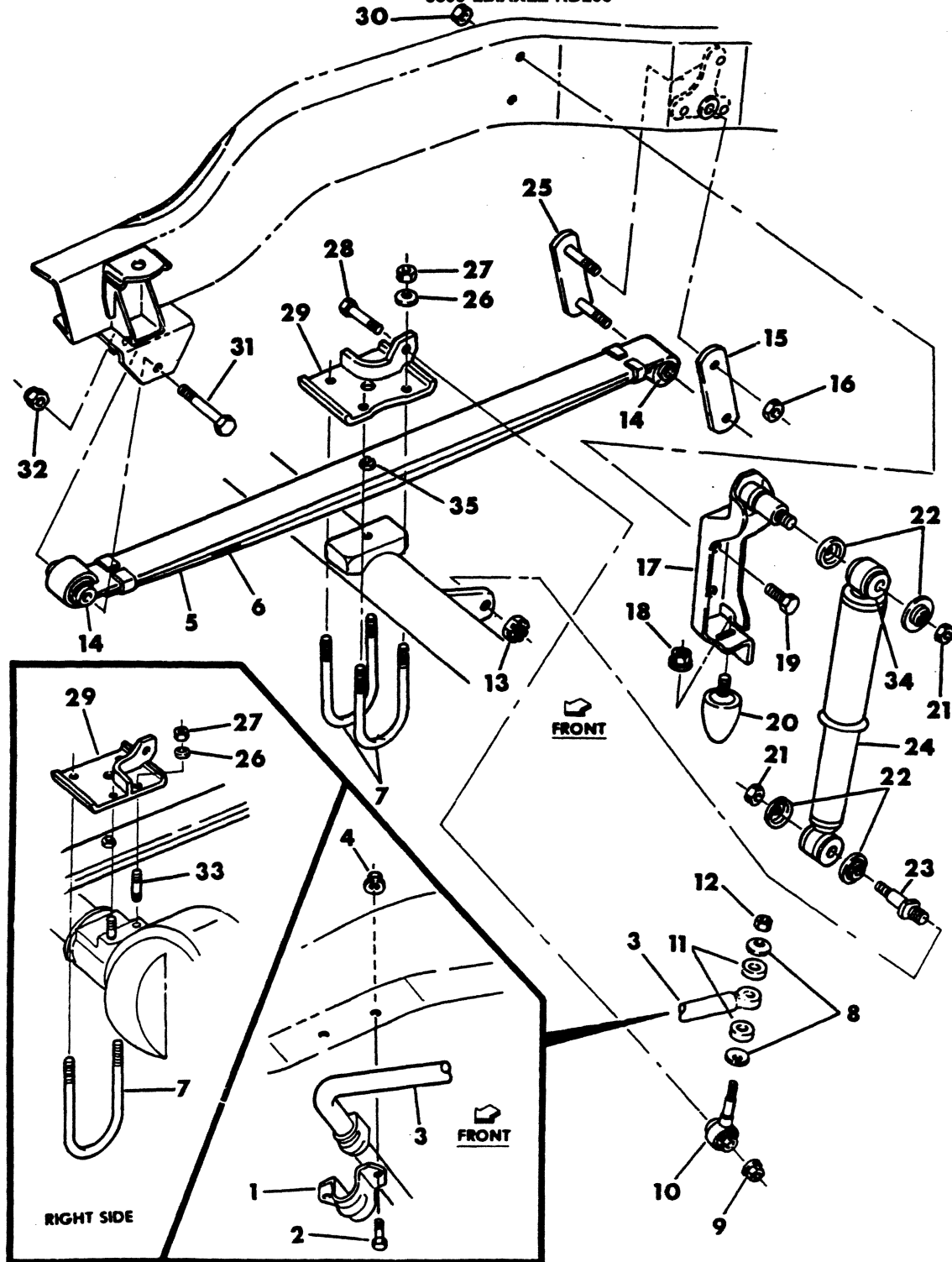
Printed in U.S.A.

June, 1982



8317 450A

## SPRING WITH SHOCK ABSORBER, FRONT LEAF- 3500 LB. AXLE-RD200





ITEM	PART NUMBER	QTY	MODEL	DESCRIPTION
<b>SPRING WITH SHOCK ABSORBER,FRONT LEAF- 3500 LB.AXLE-RD200</b>				
* NOTE: Items Marked * Are Sway Eliminator Parts & Are Not Used On RD200				
1				RETAINER-*
2				BOLT-*
3				SHAFT-*
4				NUT-*
5	3893 747	2		SPRING,Front-1550/1800 LB.
6	3549 063	AR		INTERLINER, Spring-2 1/2 x 5 with 1/2" hole
7	4036 857	4		CLIP,Front Spring
8				RETAINER-*
9				NUT-*
10				LINK-*
11				INSULATOR-*
12				NUT-*
13	272 920	2		NUT,Pivot Stud-3/4-16
14	1920 540	4		BUSHING,Front Spring Eye
15	3497 488	2		SHACKLE without BOLTS
15	6028 512	4		NUT,Shackle Bolt-1/2-20-Upper & Lower
17	3736 982	2		BRACKET,Shock and Bumper Frame-1978
17	4117 742	2		BRACKET,Shock and Bumper Frame-1979-80-81
18	6025 020	2		NUT,Bumper-3/8-16
19	182 778	4		BOLT,Shock Bracket To Frame-1/2-20 x 1.50
20	3496 291	2		BUMPER,Front Spring
21	115 731	4		NUT,Shock Stud-1/2-20
22	1319 555	4		RETAINER,Shock Bushing-Large Dia. Hole
22	1319 554	4		RETAINER,Shock Bushing-Small Dia. Hole
23	2225 394	2		STUD,Shock Lower Pivot
24	3879 297	2		SHOCK ABSORBER,light duty-3500 lb. axle
25	3497 486	2		SHACKLE with BOLTS
26	6024 691	8		WASHER,CLIP-Coned
27	6029 459	8		NUT,Clip or Stud-9/16-18
28				BOLT-*
29	4036 856	2		PLATE,Clip Seat-1978
29	4116 993	2		PLATE,Clip Seat-1979-80-81
30	9421 980	4		NUT,Shock Bracket Bolt-1/2-20
31	1923 876	2		BOLT,Front Spring Eye Front-1/2-20 x 3.88
32	6028 512	2		NUT, Spring Eye Bolt-1/2-20
33	6030 753	2		STUD,Front Spring Mounting-Right Side
34	2229 479	AR		BUSHING,Shock Absorber Pivot
35	593 805	2		BOLT,Front Spring Center
35	114 942	2		NUT,Front Spring Center Bolt
NOTE: The Following Parts Are Not Illustrated.				
	2539 574	2		INSULATOR, Spring Clip

<b>LIGHT</b>	A = All Sport Utility (Ramcharger).	B = All Compact Models.	D = Conventional Cab.
<b>DUTY</b>	AD = 2 Wheel Drive Only (Ramcharger).	CB-MB = Compact Front Section Only.	W = Conventional Cab 4 Wheel Drive.
<b>CODES:</b>	AW = 4 Wheel Drive Only (Ramcharger).	P = Forward Control Chassis.	M = Motor Home.
<b>MEDIUM-HEAVY CODES:</b> XNT = Low Cab Forward. D = Conventional Cab. S = School Bus. W = 4-Wheel Drive.			

AR=Use as Required

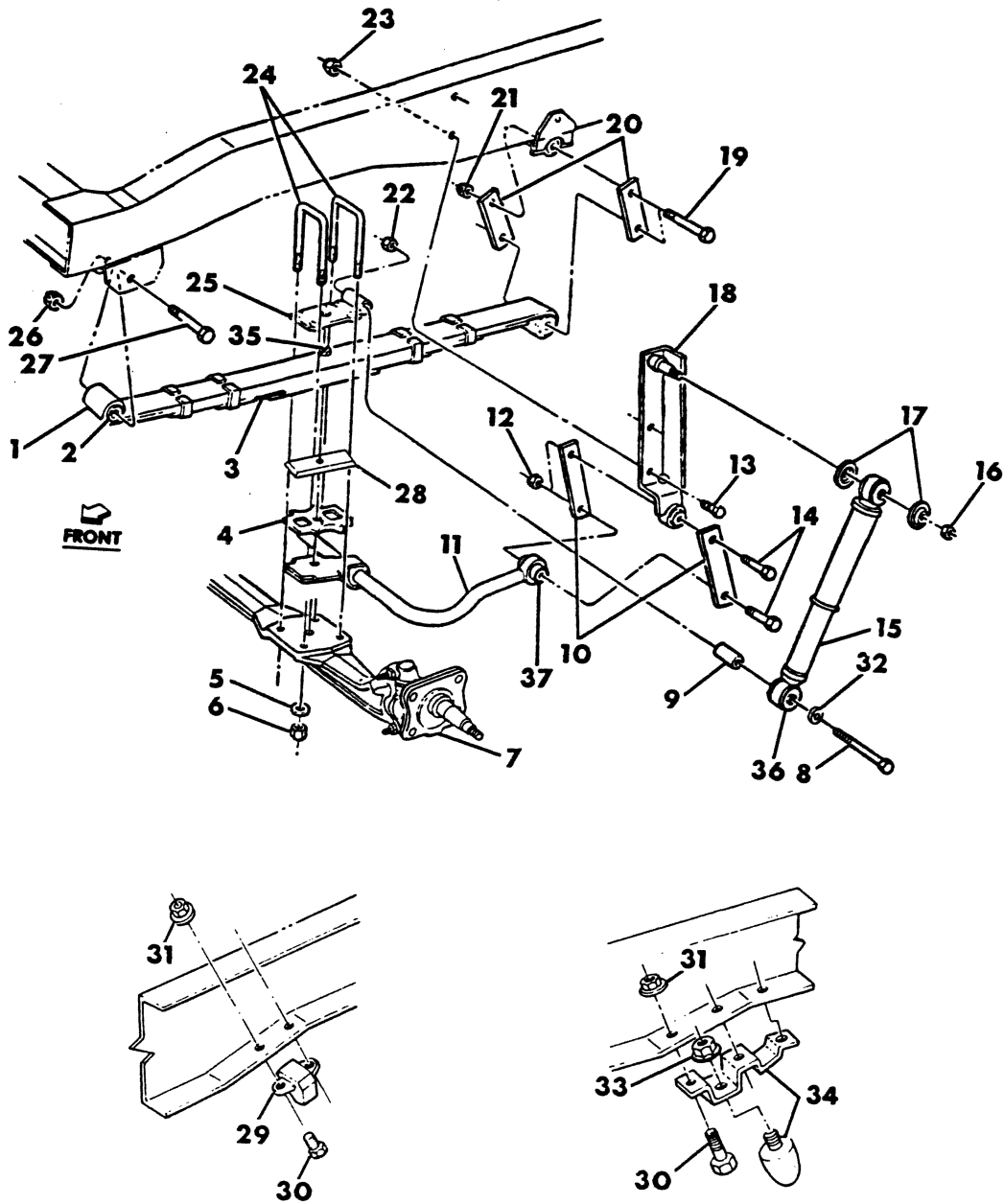
# = New Part Number

Printed in U.S.A.

June, 1982

8317 600A

## SPRING WITH SHOCK ABSORBER, FRONT LEAF M300-400-500-600



ITEM	PART NUMBER	QTY	MODEL	DESCRIPTION
<b>SPRING WITH SHOCK ABSORBER,FRONT LEAF M300-400-500-600</b>				
1				FRONT SPRINGS
	3641 289	2	M3	1850/2050 Lb.,5 Leaf
	3638 621	2	M3-4-5	2300/2525 Lb.,8 Leaf-1978
	4089 715	2	M3-4-5	2300/2525 Lb.-1979
	4131 322	2	M3-4-5	2300/2525 Lb.-1980
	4031 289	2	M6	2800/3150 Lb.,7 Leaf
2	3638 622	4		BUSHING,Front Spring Eye
3	3638 666	AR	M3-4-5	INTERLINER,Leaf Spring-1978-79
3	1948 396	8	M6	INTERLINER,Leaf Spring-1978-79
3	3638 666	AR	ALL	INTERLINER,Leaf Spring-1980
4	3638 652	2	M3,M6	SHIM,Front Spring-1978
4	4115 428	2	M3-4-5-6	SHIM,front spring-1979-80
5	6024 691	8		WASHER,Spring Clip Coned
6	6029 459	8		NUT,Spring Clip-9/16-18
7				KNUCKLE,Steering-Refer To Figure 2-1500
8	9420 846	2		BOLT,shock absorber lower-1/2-20 x 6
9				SPACER,Shock Abs.To Clip Seat-Not Serviced
10	3638 640	4	M3-4-5-6	LINK,Sway Eliminator Shaft
11	4036 996	1	M3-4-5-6	SHAFT,Sway Eliminator
12	152 372	4		NUT,Link Ball-5/8-11
13	181 163	4		BOLT,shock bracket to frame-1/2-13 x 1.25
14	271 885	4		BOLT,sway eliminator shaft link-5/8-11 x 3.25
15	3638 631	2	M3-4-5	SHOCK ABSORBER,Front
15	4036 892	2	M6	SHOCK ABSORBER,Front
16	152 369	2		NUT,Shock Bracket Stud-1/2-20
17	1319 555	2		RETAINER,Shock Bushing-Large Dia. Hole
17	1319 554	2		RETAINER,Shock Bushing-Small Dia. Hole
18	3638 632-3	1		BRACKET with STUD,Shock & Elim.Shaft Frame
19	6030 143	4		BOLT,front spring rear eye shackle-5/8-11 x 4.75
20	3638 626	4		SHACKLE,Front Spring
21	152 372	4		NUT,Front Spring Shackle Bolt-5/8-18
22	152 349	2		NUT,Shock Lower Bolt
23	152 368	4		NUT,Bracket To Frame Bolt-1/2-13
24	3638 629	4		CLIP,Front Spring
25	3638 630	2	M3	SEAT,Front Spring Clip and Shock Absorber-1978
25	3733 793	2	M4-5	SEAT,Front Spring Clip And Shock Absorber-1978
25	4031 292	2		SEAT,frt.spring clip & shock absorber-1979-80
26	152 372	2		NUT,Front Spring Eye Bolt-5/8-11
27	6030 143	2		BOLT,front spring eye front-5/8-11 x 4.75
27	4031 293	AR	M6	BOLT,Front Spring Eye Front
28				SPACER-not required
29	2834 938	2	M3-4-5	ARRESTOR,Front Spring Torque-With Plate
29	3496 291	2	M6	ARRESTOR,Front Spring Torque-With Plate
29	2834 767	2	M3-4-5	ARRESTOR,Front Spring Torque-Without Plate
30	181 087	4		BOLT,Torque Arrestor or Bumper
31	6025 007	AR	M3-4-5	NUT,Torque Arrestor Bolt-5/16-18
31	118 614	AR	M6	NUT,Torque Arrestor Bolt
32	6023 054	2	M6	WASHER,Shock Lower Bolt
33	6025 020	2	M6	NUT,Bumper-3/8-16

LIGHT A = All Sport Utility (Ramcharger).

B = All Compact Models.

D = Conventional Cab.

DUTY AD = 2 Wheel Drive Only (Ramcharger).

CB-MB = Compact Front Section Only.

W = Conventional Cab 4 Wheel Drive.

CODES: AW = 4 Wheel Drive Only (Ramcharger).

P = Forward Control Chassis.

M = Motor Home.

MEDIUM-HEAVY CODES: XNT = Low Cab Forward. D = Conventional Cab. S = School Bus. W = 4-Wheel Drive.

AR=Use as Required

# =New Part Number

Printed in U.S.A.

June, 1982

# 1978-81 LIGHT DUTY TRUCK PARTS CATALOG

ITEM	PART NUMBER	QTY	MODEL	DESCRIPTION
<b>SPRING WITH SHOCK ABSORBER,FRONT LEAF</b>				
<b>M300-400-500-600</b>				
34	4031 291	2	M6	BUMPER with BRACKET
35	593 805	2		BOLT,front spring center-3/8-24 x 5
35	120 369	2		NUT,Front Spring Center Bolt
36	2229 479	AR		BUSHING,Shock Absorber Pivot
37	3638 638	2		BUSHING,front suspension sway eliminator shaft

<b>LIGHT</b>	A = All Sport Utility (Ramcharger).	B = All Compact Models.	D = Conventional Cab.
<b>DUTY</b>	AD = 2 Wheel Drive Only (Ramcharger).	CB-MB = Compact Front Section Only.	W = Conventional Cab 4 Wheel Drive.
<b>CODES:</b>	AW = 4 Wheel Drive Only (Ramcharger).	P = Forward Control Chassis.	M = Motor Home.

**MEDIUM-HEAVY CODES:** XNT = Low Cab Forward. D = Conventional Cab. S = School Bus. W = 4-Wheel Drive.

AR=Use as Required

# =New Part Number

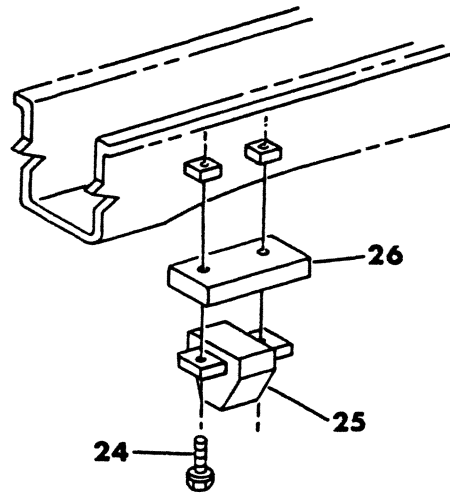
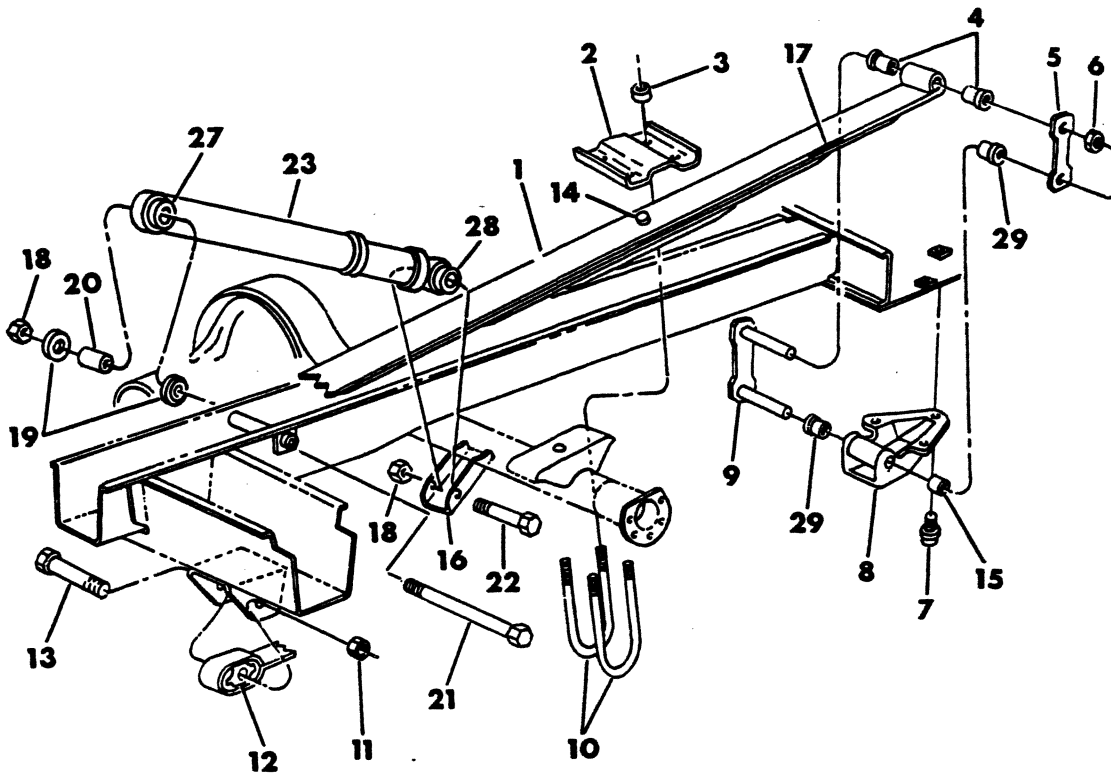
Printed in U.S.A.

June, 1982



8317 700C

SPRING WITH SHOCK ABSORBER, REAR LEAF-B100-200



ITEM	PART NUMBER	QTY	MODEL	DESCRIPTION
<b>SPRING WITH SHOCK ABSORBER, REAR LEAF-B100-200</b>				
1				<b>REAR SPRINGS</b>
NOTE: Spring Ratings Will Now Be Listed As Pad/Ground Capacity				
	3898 810	2	B1	1000/1170 LB., 3 Leaf
	4036 772	2	B1	1300/1480 LB., 4 Leaf
	4115 478	2	B1	1200/1375 LB.
	4115 479	2	B1	1400/1610 LB.
	4115 480	2	B1-2	1600/1810 LB.
	4115 481	2	B2	1800/1980 LB.
	4036 773	2		1450/1660 LB., 4 Leaf
	4036 774	2		1600/1810 LB., 5 Leaf
	4030 278	2	B2	1600 LB., 5 Leaf
	2961 013	2	B2	1750/1930 LB., 5 Leaf
2	3492 343	2		PLATE, Rear Spring Clip-With 8 3/8, 9 1/4 Rear Axle
3	6023 019	8		NUT, Clip
4	1400 269	4		BUSHING, Shackle Spring
5				PLATE, Shackle-In Shackle Package Item 5
5	4094 098	2	B1-2	PACKAGE, Shackle
				Consists OF:
				1----- Shackle & Pin
				1----- Plate, Shackle
				2-1400269 Bushing, Shackle Spring
				2----- Bushing, Shackle Bracket
				2-0271502-Nut Shackle Pin
6	152 346	4		NUT, Shackle-7/16-14
7	6029 735	6		SCREW, bracket to frame-7/13-14 x 1.25
8	4039 356	2		BRACKET & SLEEVE, Shackle-With 1400, 1600, 2900 Lb. Spring At Pad
8	3497 042-3	1	B2	BRACKET, Shackle-With 6400 Lb. G.V.W.
8	4089 314-5	1	B2	BRACKET, Shackle-With 2600 Lb. Spring At Pad
8	4039 356	2	B2	BRACKET, shackle-with 1600, 1800 lb. spring at pad
9				SHACKLE with BOLTS-In Shackle Package-Item No. 5
9	4131 312	2	B1	SHACKLE & BUSHING PACKAGE-Rear Spring-w/1200, 1400, 1600 lb spring
9	4131 312	2	B2	SHACKLE & BUSHING PACKAGE-Rear Spring-W/1600 Lb. Spring At Pad
				Consists OF:
				1-----Shackle
				1-----Plate
				2-----Bushing, Pivot
				2-1400269 BUSHING, Shackle Spring
				2-0152346 NUT, Pin
9	4131 313	2	B2	SHACKLE & BUSHING PACKAGE-Rear Spring-W/1800 Lb. Spring
				Consists Of:
				1-----Shackle & Pin
				1-----PLATE, Shackle
				1-----INSERT, Shackle
				2-0152346 NUT, Shackle Pin
				2-1400269 BUSHING, Shackle Spring
				2----- BUSHING, Shackle Bracket
10	3491 295	4		CLIP, Spring-1/2-20x6.25-2" Thd.
	1829 929	4		INSULATOR, Alignment Clip

**LIGHT DUTY CODES:** A = All Sport Utility (Ramcharger). B = All Compact Models. D = Conventional Cab.  
 AD = 2 Wheel Drive Only (Ramcharger). CB-MB = Compact Front Section Only. W = Conventional Cab 4 Wheel Drive.  
 CODES: AW = 4 Wheel Drive Only (Ramcharger). P = Forward Control Chassis. M = Motor Home.

**MEDIUM-HEAVY CODES:** XNT = Low Cab Forward. D = Conventional Cab. S = School Bus. W = 4-Wheel Drive.

AR=Use as Required

# = New Part Number

Printed in U.S.A.

June, 1982

# 1978-81 LIGHT DUTY TRUCK PARTS CATALOG

ITEM	PART NUMBER	QTY	MODEL	DESCRIPTION
<b>SPRING WITH SHOCK ABSORBER, REAR LEAF-B100-200</b>				
	2808 399	2		PACKAGE, Spring Alignment Clip Consists Of: 1-1829929 Insulator, Alignment 1——CLIP, Alignment 1——CLAMP, Alignment
11	1948 877	2		NUT, Pivot Bolt-5/8-18
12				BUSHING, Rear Spring Eye
	3640 089	AR		2" O.D.x 5/8" I.D.x 3" Long
	3898 814	AR		3" O.D.x 5/8" I.D.x 3" Long
	2403 245	AR		1 3/8" O.D.x 5/8" I.D.x 3" Long
13	6029 377	2		BOLT, Rear Spring Front Pivot
14				BOLT, Rear Spring Main Center
	593 805	AR		3/8-24 x 5.00
	2961 233	AR		3/8-24 x 1.5
	2961 234	AR		3/8-24 x 2.125
	2953 358	AR		3/8-24 x 1.75
15				INSERT, with 6400 Lb.G.V.W.-In Pkg. Item 5 & 9
16	2960 296	2		BRACKET, Shock Abs., 8-3/4 Axle-Lower
17	1948 396	AR		INTERLINER, Leaf Spring-2 1/2 x 3 1/2" long
18	152 348	AR		NUT-1/2-20
19	1319 555	AR		RETAINER, Shock Absorber Bushing-Outer
19	1319 554	AR		RETAINER, Shock Absorber Bushing-Inner
20	4116 580	2		SPACER, Pivot Bushing Retainer
21	9431 957	2		BOLT-1/2-13 x 6.75
22	181 173	2		BOLT-1/2-13 x 2.75
23	3837 028	2		SHOCK ABSORBER, light duty-3300 lb. axle
23	4086 418	2		SHOCK ABSORBER, heavy duty-3300 lb. axle
24	181 067	2		SCREW, 1/4-20 x 1.50
25	3400 611	2		BUMPER, Rear Spring
26	4036 883	2		SPACER, Rear Axle Bumper Frame
27	2206 923	2		BUSHING, Shock Upper Eye
28	2201 554	AR		BUSHING, Shock Lower Eye
29	1400 269	4		BUSHING, Shackle Bracket-Serviced In Item 9
NOTE: The Following Parts Are Not Illustrated.				
	4039 137	4		BUSHING, Shock Absorber Upper Mounting
	2229 479	2		BUSHING, Rear Shock Absorber-With 3300 Lb. Axle
	4033 805	2	B2	REINFORCEMENT, rear axle bumper long rail

**LIGHT DUTY CODES:** A = All Sport Utility (Ramcharger). B = All Compact Models. D = Conventional Cab.  
 AD = 2 Wheel Drive Only (Ramcharger). CB-MB = Compact Front Section Only. W = Conventional Cab 4 Wheel Drive.  
**CODES:** AW = 4 Wheel Drive Only (Ramcharger). P = Forward Control Chassis. M = Motor Home.

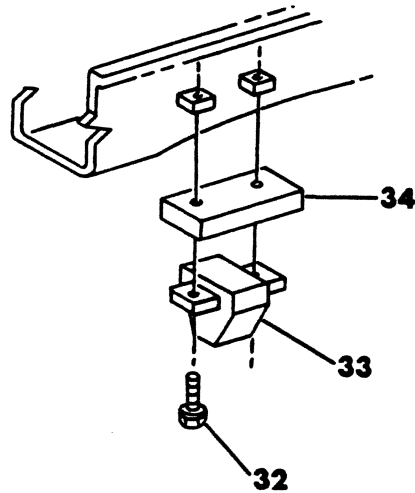
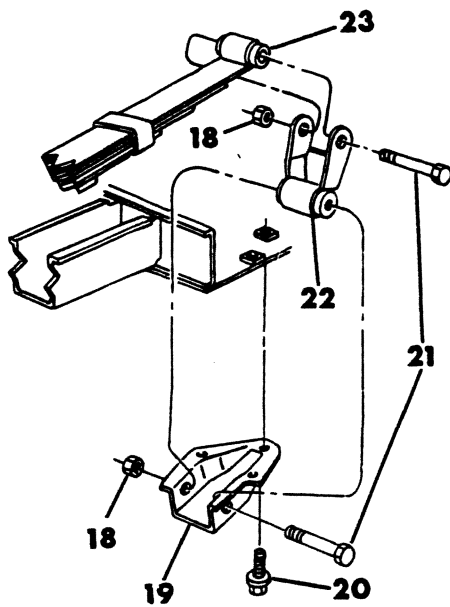
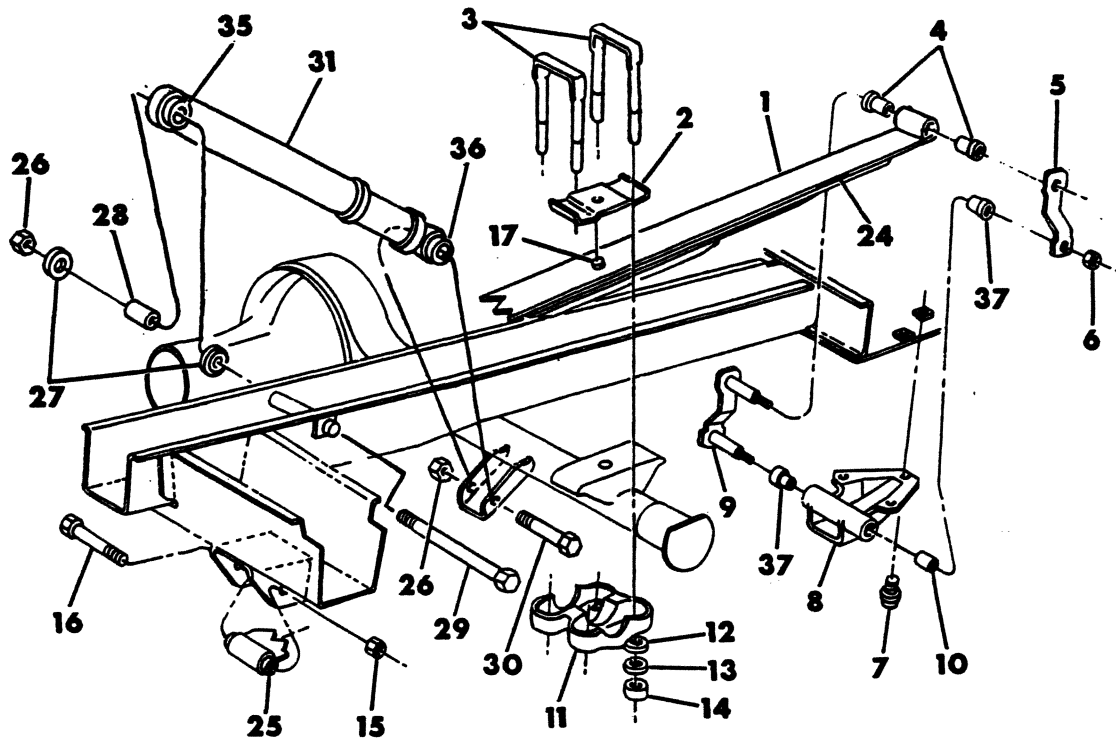
**MEDIUM-HEAVY CODES:** XNT = Low Cab Forward. D = Conventional Cab. S = School Bus. W = 4-Wheel Drive.





8317 800D

SPRING WITH SHOCK ABSORBER, REAR LEAF  
CB-MB200-300-400, B300



ITEM	PART NUMBER	QTY	MODEL	DESCRIPTION
<b>SPRING WITH SHOCK ABSORBER, REAR LEAF CB-MB200-300-400, B300</b>				
1				<b>REAR SPRINGS</b>
NOTE: Spring Rating Will Now Be Listed As Pad/Ground Capacity				
	3638 149	2		2500/2850 Lb., 7 Leaf
	2961 013	2	B3, CB3	1750/2020 Lb., 5 Leaf
	2961 017	2	B3, CB-MB3	2300/2570 Lb., 6 Leaf
	3638 595	2	CB-MB3-4	2300/2570 Lb., 6 Leaf
	3638 150	2	B3, CB-MB3	2750/3100 Lb., 7 Leaf
	4036 971	2	MB3	2850/3200 Lb., 6 Leaf, 9000 Lb. G.V.W.
	4036 972	2	CB3, MB4	3400/3750 Lb., 7 Leaf, 10000 Lb. G.V.W.
	4039 160	2	CB3, CB-MB4	3600/4000 Lb., 6 Leaf
	4115 481	2	B3, MB2	1800/1980 Lb.
	4089 143	2	B3, CB3	2100/2360 Lb.-1979-80-81
	4089 144	2	B3, CB3	2500/2770 Lb.-1979-80
	4115 480	2	MB2	1600 lb.
2	3496 266	2	MB4	SEAT, clip-W/127,145"W.B., 3400 Lb. Spring At Pad
2	3638 657	2	CB-MB3-4	SEAT, CLIP-With 3600 Lb. Spring At Pad
2	3496 266	2	CB-MB-B3	SEAT, Clip-With 2500, 2750, 2850, 2100 Lb. Spring At Pad
3	3633 999	4	CB-MB-B3	CLIP, spring-9/16-18 x 3.10 width x 16" long-10.75 thd.
3	3491 295	4	MB2	CLIP, spring-1/2-20 x 3.56 wide x 6.25" long-2" thd
3	3820 800	4	CB3-4, MB4	CLIP, spring-5/8-18 x 3.74 width x 13.00" long-10" thd.
	1829 929	4		INSULATOR, Alignment Clip
	2808 399	2		PACKAGE, Spring Alignment Clip
				Consists Of:
				1- 1829929 Insulator, Alignment
				1- Clip, Alignment
				1- Clamp, Alignment
4	1400 269	8		BUSHING, Shackle Spring
5				PLATE, shackle-1800, 2100, 2400, 2500 lb. spring at pad-in 4131313 shackle pkg.-item 9
5				PLATE, shackle-1750, 2300 lb. spring at pad-in 3514978 shackle pkg.-item 5
5	3514 978	2		SHACKLE & PIN PACKAGE
				consists of:
				1- shackle & pin assy.
				1- plate
				1- insert
				4-1400269 bushing
				2-0271502 nut
6	152 346	4		NUT, Shackle Bolt-7/16-14
7	6029 735	6		SCREW, bracket to frame-7/16-14 X 1.25
8	3497 042-3	1		BRACKET, Shackle, w/1750, 2300 Lb. Spring
8	4039 356	2	MB2	BRACKET & SLEEVE, shackle w/1600, 1800 lb. sprg. at pad
8	4039 356	2	CB-B3	BRACKET & SLEEVE, shackle w/2500 lb. sprg. at pad
8	4039 356	2	B3	BRACKET & SLEEVE, shackle w/2100, 2400 lb. spring at pad
9				SHACKLE with BOLTS-In Shackle Pkg., Item 5
9	4131 312	1	MB2	SHACKLE & BUSHING PKG. rear spring w/1600 lb. spring
				consists of:
				2-1400269 bushing spring
				2-0152346 nut
				2- bushing pivot

<b>LIGHT</b>	A = All Sport Utility (Ramcharger).	B = All Compact Models.	D = Conventional Cab.
<b>DUTY</b>	AD = 2 Wheel Drive Only (Ramcharger).	CB-MB = Compact Front Section Only.	W = Conventional Cab 4 Wheel Drive.
<b>CODES:</b>	AW = 4 Wheel Drive Only (Ramcharger).	P = Forward Control Chassis.	M = Motor Home.

**MEDIUM-HEAVY CODES:** XNT = Low Cab Forward. D = Conventional Cab. S = School Bus. W = 4-Wheel Drive.

AR = Use as Required

# = New Part Number

Printed in U.S.A.

June, 1982

# 1978-81 LIGHT DUTY TRUCK PARTS CATALOG

ITEM	PART NUMBER	QTY	MODEL	DESCRIPTION
<b>SPRING WITH SHOCK ABSORBER,REAR LEAF CB-MB200-300-400,B300</b>				
				1----- plate
				1----- shackle
9	4131 313	1		SHACKLE & BUSHING PACKAGE,Rear Spring with 1800,2100,2400,2500 lb.spring at pad Consists Of: 1----- Shackle & Pin 1----- PLATE,Shackle 1----- INSERT,Shackle 2-0152346 NUT,Shackle Pin 2-1400269 BUSHING,Shackle Spring 2----- BUSHING,Shackle Pivot
10				INSERT-In Shackle Pkg.,Item 5 & 9
11	3638 659	2	CB3-4,MB4	PLATE,spring clip-w/spicer 70 rear 8000 lb. axle,163" w.b.
11	2226 998	2		PLATE, Spring Clip-With Spicer 60 Rear Axle
11	1799 970	2	CB3,MB4	PLATE, Spring Clip-With Spicer 70 Rear Axle-127,145" w.b.
11	3492 343	2	MB2	PLATE, Spring Clip-With 9 1/4 rear axle
12				WASHER,Clip
13				WASHER,Clip
14	6029 459	8		NUT,Clip Lock-9/16-18
14	6030 016	8	CB4,MB4	NUT,Rear Spring Clip
15	1948 877	2		NUT,Pivot Bolt-5/18-18
16	6029 377	2		BOLT,rear spring front eye
17				BOLT,Rear Main Spring Center
	593 805	AR		3/8-24x5
	2961 233	AR		3/8-24 x 1.5
	2961 234	AR		3/8-24 x 2.125
	2953 358	AR		3/8-24 x 1.75
	120 369	AR		NUT, Spring Center Bolt
	271 506	AR	CB-MB4	NUT, Spring Center Bolt
18		4		NUT-3/4-16
19	3634 781	2	MB-CB-B3	BRACKET,shackle-With 2750 lb. spring at pad
19	3634 781	2	MB4	BRACKET,shackle-With 2850 lb. spring at pad
19	3634 781	2	CB3,MB4	BRACKET,shackle-With 3400 lb. spring at pad
19	4089 314-5	1	MB2,B2	BRACKET,shackle-With 1800 lb. spring at pad
19	4089 314-5	1	B3	BRACKET,shackle-With 2100 lb. spring at pad
19	4089 314-5	1	B3	BRACKET,shackle-With 2400 lb. spring at pad
19	4089 314-5	1	CB-B3	BRACKET,shackle-With 2500 lb. spring at pad
20	6029 770	6		SCREW,Bracket To Frame-7/8-14x1.875
21	2237 066	4		BOLT,rear spring eye-3/4-16 X 3.88
22	3496 094	2		SHACKLE-except 3600 lb. spring
22	4037 714	2		SHACKLE-with 3600 lb. spring
23				BUSHING,Rear Spring Eye or Shackle
	2403 245	AR		1-3/8 O.D.x 5/8 I.D. x 3" Long
	3898 814	AR		3 O.D.x 5/8 I.D. x 3" Long
	3640 089	AR		2" O.D.x 5/8" I.D. x 3" Long
	1920 541	AR		1 1/2 O.D. x 3/4 I.D. x 2 7/8" long
	3821 247	AR		2.00-O.D. x .628 I.D.x 3.108" Long
	3638 651	AR		1.75-O.D. x .752 I.D.x 3.490" Long
24	4030 340	AR		INTERLINER,leaf spring-3 x 3" long,w/1/2" center bolt hole

**LIGHT DUTY CODES:** A = All Sport Utility (Ramcharger). B = All Compact Models. D = Conventional Cab.  
 AD = 2 Wheel Drive Only (Ramcharger). CB-MB = Compact Front Section Only. W = Conventional Cab 4 Wheel Drive.  
 AW = 4 Wheel Drive Only (Ramcharger). P = Forward Control Chassis. M = Motor Home.

**MEDIUM-HEAVY CODES:** XNT = Low Cab Forward. D = Conventional Cab. S = School Bus. W = 4-Wheel Drive.

AR=Use as Required

# =New Part Number

Printed in U.S.A.

June, 1982

ITEM	PART NUMBER	QTY	MODEL	DESCRIPTION
<b>SPRING WITH SHOCK ABSORBER, REAR LEAF</b>				
<b>CB-MB200-300-400, B300</b>				
	1948 396	AR		INTERLINER, leaf spring-2 1/2 x 3 1/2" long, with 5/16" center bolt hole
	6030 016	AR	CB-MB4	INTERLINER, Leaf Spring
	3492 073	AR		INTERLINER, leaf spring-2 1/2 x 2 1/2 x 5/16" bolt hole
	3549 063	AR		INTERLINER, leaf spring-2 1/2 x 5" long with 1/2" bolt hole
25	4086 937	2	CB, MB, B3	BUSHING, Rear Sprg. Frt. Eye - 2100 Lb. (1979-80-81)
	3640 089	2	CB, MB, B3	2500 Lb. (1979-80-81)
	3821 247	2	CB, B3	2700 Lb. (1979-80-81)
26	152 348	AR		NUT-1/2-20
27	1319 555	AR		RETAINER, Shock Absorber Bushing Outer
27	1319 554	AR		RETAINER, Shock Absorber Bushing Inner
28	4116 580	2		SPACER, Pivot Bushing Retainer
29	9431 957	2		BOLT-1/2-13 x 6.75
30	181 173	2		BOLT-1/2-13 x 2.75
31	3837 028	2	B3	SHOCK ABSORBER, light duty-3600, 4000 lb. axle
31	4086 418	2		SHOCK ABSORBER-heavy duty-3300, 3600, 4000 lb. axle
32	181 067	AR		SCREW-1/4-20 x 1.25
32				SCREW-1/4-20 x 1.50
33	3496 691	2		BUMPER, rear spring-except MB2
33	3400 611	2	MB2	BUMPER, rear spring
34	4036 883	2		SPACER, Rear Axle Bumper Frame
35	2206 923	2		BUSHING, Shock Upper Eye
36	2201 554	2		BUSHING, Shock Lower Eye
NOTE: The Following Parts Are Not Illustrated.				
	4039 137	4		BUSHING, Shock Absorber Upper Mounting
	2229 479	2		BUSHING, Rear Shock Absorber-With 3600, 4000 Lb. Axle
	4033 805	2		REINFORCEMENT, rear axle bumper longrail
	3739 793	2		T/PLATE, rear axle bumper longrail
	4210 985	2	B2	BRACKET, rear susp. shackle rebound stop-2400 lb. sprg. at pad
	4210 785	2	B3	SPACER, rear spring bumper-with 2400 lb. spring at pad
	4147 687	2	B3	RESTRICTOR, rear axle bumper mounting jounce-1981

LIGHT A = All Sport Utility (Ramcharger).

B = All Compact Models.

D = Conventional Cab.

DUTY AD = 2 Wheel Drive Only (Ramcharger).

CB-MB = Compact Front Section Only.

W = Conventional Cab 4 Wheel Drive.

CODES: AW = 4 Wheel Drive Only (Ramcharger).

P = Forward Control Chassis.

M = Motor Home.

MEDIUM-HEAVY CODES: XNT = Low Cab Forward. D = Conventional Cab. S = School Bus. W = 4-Wheel Drive.

AR=Use as Required

# = New Part Number

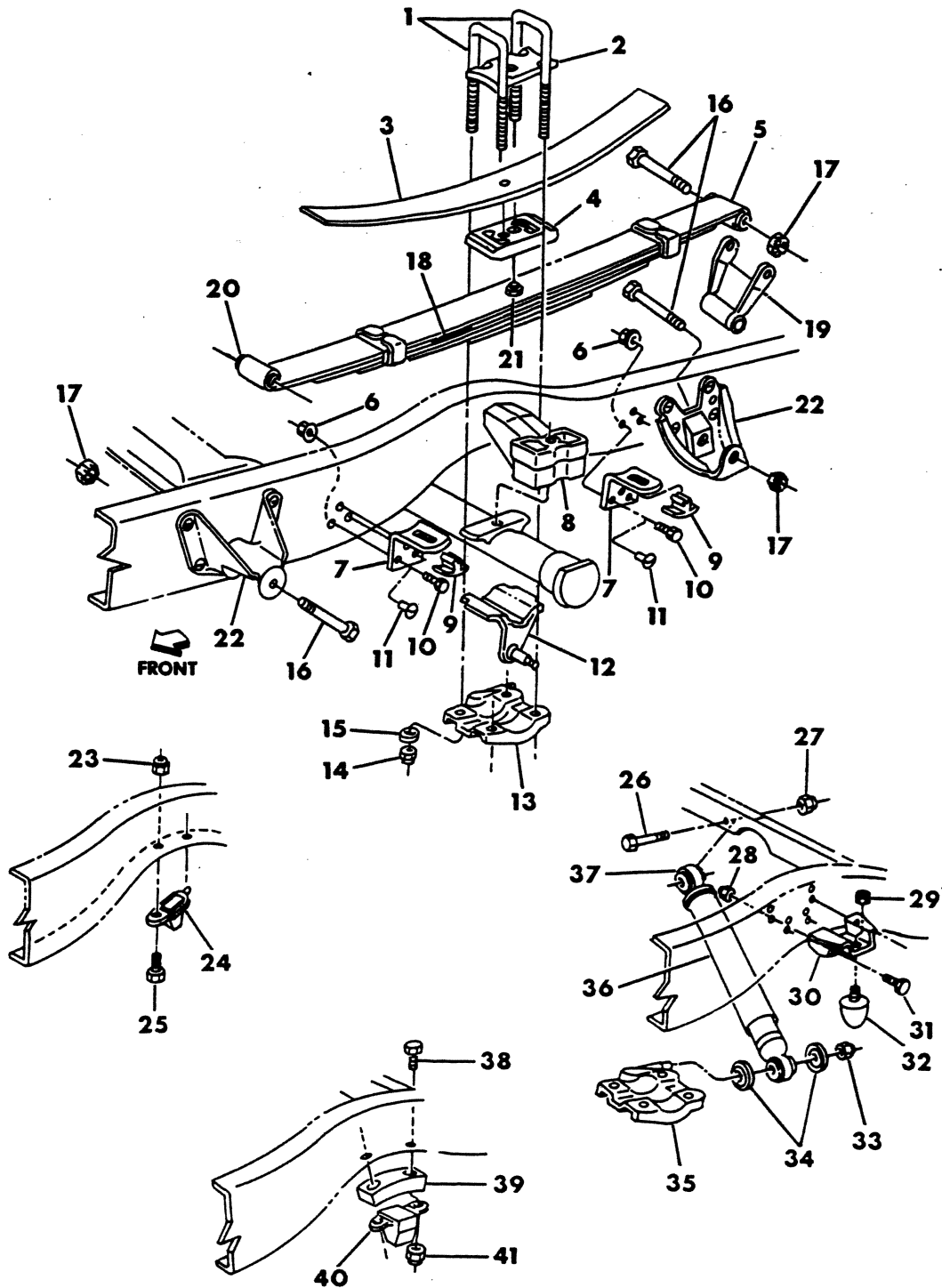
Printed in U.S.A.

June, 1982

# 1978-81 LIGHT DUTY TRUCK PARTS CATALOG

8317 900B

SPRING WITH AUXILLIARY & SHOCK ABSORBER, REAR LEAF  
AD100, D100-200-300-400



ITEM	PART NUMBER	QTY	MODEL	DESCRIPTION
<b>SPRING WITH AUXILLIARY &amp; SHOCK ABSORBER,REAR LEAF AD100,D100-200-300-400</b>				
1	3633 710	AR	AD1,D1	CLIP,Rear Spring-1/2-20 x 3.04 x 8.25" Long-3.00 Thd.
	4031 209	4	D1	1/2-20 x 3.04 x 7.50" Long-3.00" Thd.
	3637 393	4	D2	9/16-18x3.10x7.75" Long-3" Thd.
	3633 999	AR		9/16-18x3.10x16" Long-10.75" Thd.
	3637 393	4	D3	w/2500 Lb. Spring-9/16-18x7.75" Long
	3821 279	4	AD1,D1	CLIP,Rear Spring-1/2-20 x 3.04 x 6.25" Long-3.00" Thd.
	3780 511	2	D2-3	CLIP PACKAGE,Rear Spring Consists Of: 2-3633999 Clip 1-3496266 SEAL,Clip 4-6029459 NUT
	2808 399	2		CLIP PACKAGE,Spring Alignment Consists Of: 1-1829929 Alignment Insulator 1----- Alignment Clip 1----- Alignment Clamp
2	3633 713	2	AD1,D1	SEAT,Rear Spring Clip
2	3496 266	2	D2-3-4	SEAT,Rear Spring Clip
3	3897 286	2	D1	SPRING,Rear Auxilliary-360 LB.-1 Leaf
3	3897 287	2	D2-3-4	SPRING,Rear Auxilliary-585 Lb.-1 Leaf
3	4032 300	2	D3-4	SPRING,Rear Auxilliary-900 Lb.-4 Leaf
4	3633 720	2		SPACER,550 Lb. Aux. Spring
4	3633 720	2		SPACER,585 Lb. Aux. Spring
4	2507 662	2		SPACER,900 Lb. Aux. Spring
5				SPRING,Rear Main
<b>NOTE: Spring Ratings Will Now Be Listed As Pad/Ground Capacity</b>				
	3897 280	2	AD1	1350/1520 Lb.,4 Leaf
	4030 456	2	AD1	1650/1820 Lb.,5 Leaf
	3897 279	2	D1	1350/1520 Lb.,4 Leaf-115,131,133" W.B.
	3897 281	2	D1	1650/1820 Lb.,5 Leaf-115,131,133" W.B.
	3897 280	2	D1	1375/1520 Lb.,4 Leaf-149" W.B.
	4030 456	2	D1	1650/1820 Lb.,5 Leaf-149" W.B.
	4112 894	2	D1	1100/--- Lb.,115,131" W.B.-After Approx.11-15-78
	3492 084	2	D2	1650/1875 Lb.,5 Leaf
	3492 087	2	D2	1700/2020 Lb.,5 Leaf
	3492 085	2	D2	1950/2175 Lb.,5 Leaf
	3897 284	2	D2	2500/2750 Lb.-with 3300 lb.front axle & club cab
	3897 285	2	D2	2500/2900 Lb.-with 4000 lb.front axle & club cab
	3897 284	2	D2	2500 Lb.-with 4000 lb.front axle & crew cab
	4030 456	2	D2	1650/1820 Lb.,5 Leaf,149" W.B.
	3492 087	2	D3	1700/2020 Lb.,5 Leaf
	3897 285	2	D3	2500/2820 Lb.,6 Leaf
	3823 868	2	D2-3-4	3250/3650 Lb.,7 Leaf
	3897 284	2	D3	2500 Lb.,6 Leaf
6	6025 020	12	D1-2-3-4	NUT & WASHER,Bumper Bracket Bolt
7	3633 955	4	D1-2-3-4	BRACKET,Aux.Spring Bumper
8	4030 938-9	1	All	SPACER,Rear Spring To Axle
9	3633 956	4	D1-2-3-4	PAD,Aux. Spring Bumper Bracket
10	181 114	12	D1-2-3-4	BOLT,Bumper Bracket

<b>LIGHT DUTY CODES:</b>	A = All Sport Utility (Ramcharger).	B = All Compact Models.	D = Conventional Cab.
	AD = 2 Wheel Drive Only (Ramcharger).	CB-MB = Compact Front Section Only.	W = Conventional Cab 4 Wheel Drive.
	AW = 4 Wheel Drive Only (Ramcharger).	P = Forward Control Chassis.	M = Motor Home.

**MEDIUM-HEAVY CODES:** XNT = Low Cab Forward. D = Conventional Cab. S = School Bus. W = 4-Wheel Drive.

AR=Use as Required

# =New Part Number

Printed in U.S.A.

June, 1982

# 1978-81 LIGHT DUTY TRUCK PARTS CATALOG

ITEM	PART NUMBER	QTY	MODEL	DESCRIPTION
<b>SPRING WITH AUXILLIARY &amp; SHOCK ABSORBER,REAR LEAF</b>				
<b>AD100,D100-200-300-400</b>				
11	108 684	12	D1-2-3-4	RIVET
12				BRACKET,Sway Bar-Not Used
13	3736 400-1	1	AD1,D1	PLATE & STUD,Rear Spring Clip
13	3736 402-3	1	D2	PLATE & STUD,Rear Spring Clip
13	3736 404-5	1	D3-4	PLATE & STUD,Spring Clip-With Spicer 70 Rear Axle
13	3736 402-3	AR	D3	PLATE & Stud,Rear Spring Clip-With Spicer 60 Rear Axle
14				NUT,Clip
	6029 459	8	D2-3-4	9/16-18
	6023 019	8	AD1,D1	1/2-20
15	6028 762	8	AD1,D1	WASHER,Coned
15	6024 691	8	D2-3	WASHER,Coned
16				BOLT,Rear spring
	1923 876	AR		1/2-20x3.88"
	2907 406	AR		5/8-18x3.88"
	2237 066	AR		3/4-16x3.88"
17				NUT,Rear Spring Bolt
	152 349	AR		1/2-20
	1948 877	AR	AD-D1-2	5/8-18
	272 920	AR		3/4-16-Not Serviced
18				INTERLINER,Leaf Spring
	3492 073	AR		2-1/2 x 2-1/2" Long
	1937 549	AR		2-1/2 x 5" Long,5/16" Center Bolt Hole
	3549 063	AR		2-1/2 x 5" Long,1/2" Center Bolt Hole
	1948 396	AR		2-1/2 x 3-1/2" Long
	3638 666	AR		3 x 3-1/2" Long
19	1923 872	2	D1	SHACKLE,Rear Spring Rear-All W.B.,With 1100,1350,1650 lb. spring at pad
19	2909 367	2	AD1	With 1375,1650 Lb. Spring At Pad
	3496 094	2	D2-3-4	With 3250 Lb. Spring At Pad
	2909 367	2	D1	With 149" W.B.,With 1375,1650 Lb.Spring At Pad
	3496 094	2	D2	with 1700,2500 lb. spring
	2909 367	2	D2	with 1950,2500 lb. spring
20				BUSHING,Rear Spring Eye or Shackle
	1920 540	AR		1" O.D. x 1/2" I.D. x 2-7/8" Long
	1920 541	AR		1-1/2" O.D. x 3/4" I.D. x 2-7/8" Long
	2907 869	AR		1-1/4" O.D. x 5/8" I.D. x 2-7/8" Long
21				BOLT,Main Spring Center
	593 805	2		3/8-24 x 5" Long
	2954 709	2		3/8-24 x 5" Long
	2961 234	2		3/8-24 x 2-1/8" Long
	2953 076	2		3/8-24 x 3-1/4" Long
	120 369	2		NUT,Spring Center Bolt
22				BRACKET-Refer To Group 13
23	152 342	AR		NUT-5/16-18
24	3897 293	2	D2-3-4	BUMPER,Rear Spring Rear Axle
25	180 078	AR	D2-3-4	BOLT
26	9422 752	2		BOLT-1/2-20 x 2.75
27	152 349	AR		BOLT-1/2-20
28	9417 668	8	AD1,D1	NUT-3/8-16

**LIGHT DUTY CODES:** A = All Sport Utility (Ramcharger). B = All Compact Models. D = Conventional Cab.  
 AD = 2 Wheel Drive Only (Ramcharger). CB-MB = Compact Front Section Only. W = Conventional Cab 4 Wheel Drive.  
 AW = 4 Wheel Drive Only (Ramcharger). P = Forward Control Chassis. M = Motor Home.

**MEDIUM-HEAVY CODES:** XNT = Low Cab Forward. D = Conventional Cab. S = School Bus. W = 4-Wheel Drive.

AR=Use as Required

# =New Part Number

Printed in U.S.A.

June, 1982



SPRINGS

1978-81 LIGHT DUTY TRUCK PARTS CATALOG

ITEM	PART NUMBER	QTY	MODEL	DESCRIPTION
------	-------------	-----	-------	-------------

SPRING WITH AUXILLIARY & SHOCK ABSORBER,REAR LEAF  
AD100,D100-200-300-400

29	152 344	AR		NUT
30	3897 290	2	AD1,D1	BRACKET,Rear Spring Bumper To Frame
31	181 112	AR	AD1,D1	BOLT-3/8-16 x 1
32	4014 050	2	AD1,D1	BUMPER,Rear Spring
33	152 349	AR		NUT-1/2-20
34	1319 554	2		RETAINER,Shock Bushing-Outer-Small Dia. Hole
34	1319 555	2		RETAINER,Shock Bushing-Inner-Large Dia. Hole
35				PLATE-Refer To Item 13
36	4026 820	2	AD1,D2-3-4	SHOCK ABSORBER,Rear-Light Duty
36	4026 820	2	D1	SHOCK ABSORBER,Rear-Light Duty-1978-79
36	4186 812	2	D1	SHOCK ABSORBER,light duty-1980-81
36	4086 419	2		SHOCK ABSORBER,Rear-Heavy Duty
37	1319 902	AR		BUSHING,Light Duty Shock Absorber-Upper & Lower
37	2229 479	AR		BUSHING,Heavy Duty Shock Absorber-Upper & Lower
38	181 088	4		BOLT,Bumper
38	181 094	4	D3-4	BOLT,Bumper-With 3250 Lb. Spring
39	3827 398	2	D3-4	SPACER,Bumper-With 3250 Lb. Spring
40	3496 691	2		BUMPER,Rear Spring
41	152 342	4		NUT-5/16-18

NOTE: The Following Parts Are Not Illustrated.

	2206 923	2		BUSHING,Shock Absorber Upper Mounting
	2206 925	AR		RETAINER,Shock Upper Bushing

<b>LIGHT</b>	A = All Sport Utility (Ramcharger).	B = All Compact Models.	D = Conventional Cab.
<b>DUTY</b>	AD = 2 Wheel Drive Only (Ramcharger).	CB-MB = Compact Front Section Only.	W = Conventional Cab 4 Wheel Drive.
<b>CODES:</b>	AW = 4 Wheel Drive Only (Ramcharger).	P = Forward Control Chassis.	M = Motor Home.

**MEDIUM-HEAVY CODES:** XNT = Low Cab Forward. D = Conventional Cab. S = School Bus. W = 4-Wheel Drive.

AR=Use as Required

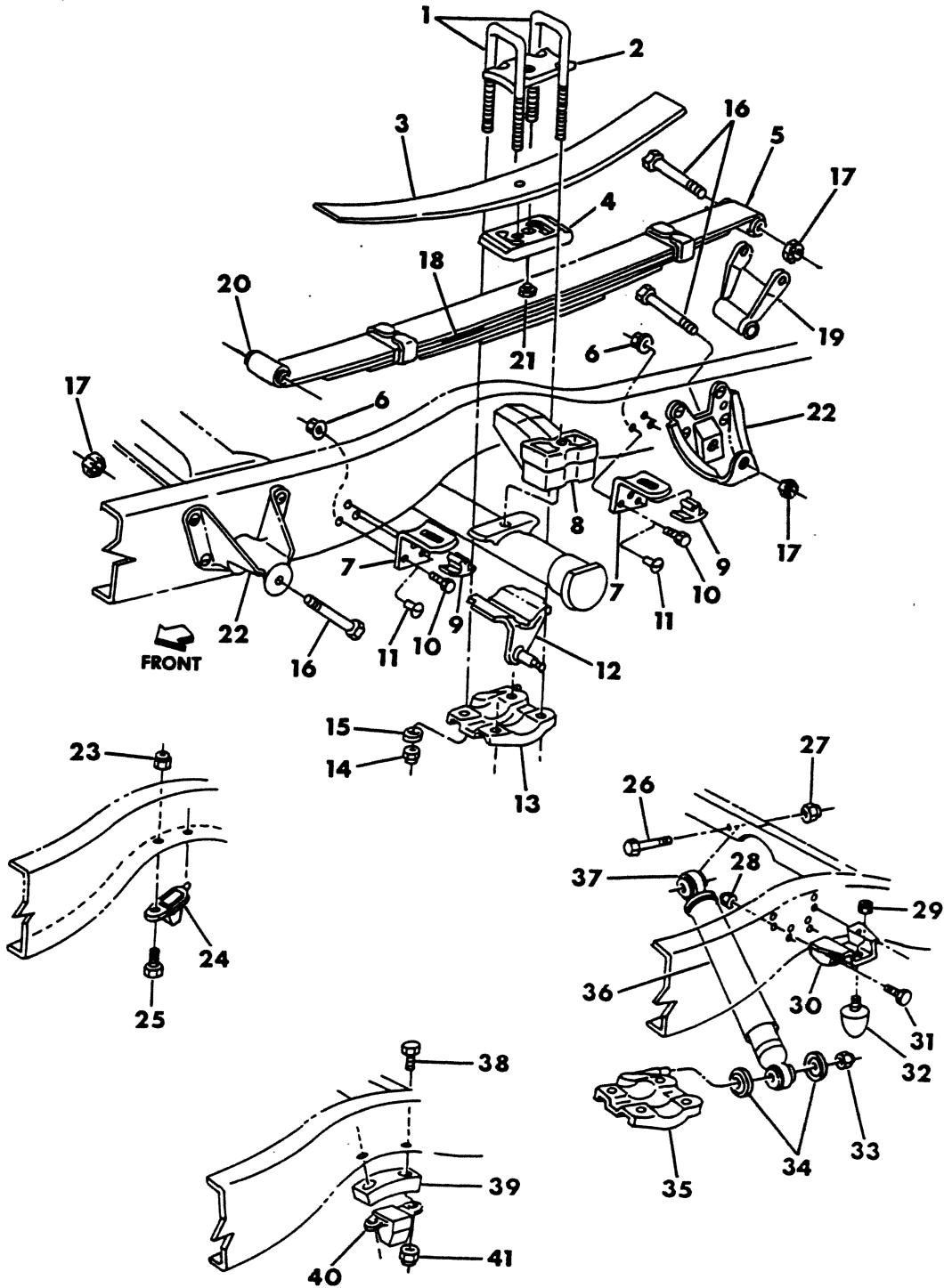
# =New Part Number

Printed in U.S.A.

June, 1982

8317 1000B

## SPRING WITH AUXILLIARY & SHOCK ABSORBER, REAR LEAF AW100, W100-200-300-400



ITEM	PART NUMBER	QTY	MODEL	DESCRIPTION
<b>SPRING WITH AUXILLIARY &amp; SHOCK ABSORBER, REAR LEAF AW100, W100-200-300-400</b>				
1				CLIP, Rear Spring
	3735 991	4	AW1, W1	1/2-20 x 3.04 x 10.25" Long-3.00 Thd.
	3633 999	AR	W2-3	9/16-18 x 3.10 x 16" Long-10.75 Thd.
	4032 462	4	W3-4	9/16-18 x 3.10 x 16" Long-3.00 Thd.
2	3633 713	2	AW1, W1	SEAT, Rear Spring Clip
	3496 266	2	W2-3-4	SEAT, Rear spring Clip
3	3897 287	2	W2-3	SPRING, Rear Auxilliary-585 Lb., 1 Leaf
3	4032 300	2	W3-4	SPRING, Rear Auxilliary-900 Lb., 4 Leaf
4	3633 720	2		SPACER, 550 Lb. Aux. Spring
4	3633 720	2		SPACER, 585 Lb. Aux. Spring
	2507 662	2		SPACER-900 Lb. Aux. Spring
	2225 833	2	W3	SEAT or DOWEL-CANADA
5				SPRING, Rear Main
	3879 207	2	AW1	1150/1340 LB., 2 Leaf
	3736 962	2	AW1	1750/1970 LB., 4 Leaf
	4030 456	2	AW1-W1	1650/1820 LB., 5 Leaf
	4030 455	2	AW1	1350/1520 LB., 4 Leaf
	3897 280	2	W1	1350/1520 LB., 4 Leaf
	3492 085	2	W1-2	1950/2175 LB., 5 Leaf
	3736 966	2	W2	2200/2450 LB., 5 Leaf
	3897 284	2	W2	2500/2725 LB., 6 Leaf
	3823 868	2	W3-4	3250/3650 LB., 7 Leaf
	3897 285	2	W3	2500 LB., 6 Leaf
6	6025 020	12	W2-3	NUT & WASHER, Bumper Bracket Bolt
7	3633 955	4	W2-3-4	BRACKET, Aux. Spring Bumper
8	3897 291	2	AW1, W1	SPACER, Rear Spring To Axle
	4030 938-9	2	W2	3500 LB. Axle
	3893 234-5	2	W2	4500 LB. Axle-Spacer-4-5/16" High
	3828 296-7	2	W3-4	4500 LB. Axle, Spacer-6" High
9	3633 956	4	W2-3-4	PAD, Aux. Spring Bumper Bracket
10	181 114	12	W2-3-4	BOLT, Aux. Spring Bumper Bracket
11	108 684	12	W2-3	RIVET
12				BRACKET, Sway Bar with Dual Wheels
13	3736 400-1	1	AW1, W1	PLATE with STUD, Rear Spring Clip
13	3736 402-3	1	W2	PLATE with STUD, Rear Spring Clip
13	3736 404-5	1	W3-4	PLATE with STUD, Rear Spring Clip
14				NUT
14	6029 459	8	W2-3-4	9/16-18
14	6023 019	8	AW1, W1	1/2-20
15	6023 054	8	AW1, W1	WASHER, Coned
	6024 691	8	W2-3	
16				BOLT, Rear Spring
	1923 876	AR		1/2-20 x 3.88" Long
	2907 406	AR		5/8-18 x 3.88" Long
	2237 066	AR		3/4-16 x 3.88" Long
17				NUT, Rear Spring Bolt
	152 349	AR		1/2-20
	1948 877	AR	AW-W1-2	5/8-18
	272 920	AR		3/4-16-Not Serviced

LIGHT A = All Sport Utility (Ramcharger).

B = All Compact Models.

D = Conventional Cab.

DUTY AD = 2 Wheel Drive Only (Ramcharger).

CB-MB = Compact Front Section Only.

W = Conventional Cab 4 Wheel Drive.

CODES: AW = 4 Wheel Drive Only (Ramcharger).

P = Forward Control Chassis.

M = Motor Home.

MEDIUM-HEAVY CODES: XNT = Low Cab Forward. D = Conventional Cab. S = School Bus. W = 4-Wheel Drive.

AR=Use as Required

# = New Part Number

Printed in U.S.A.

June, 1982

# 1978-81 LIGHT DUTY TRUCK PARTS CATALOG

SPRINGS

ITEM	PART NUMBER	QTY	MODEL	DESCRIPTION
<b>SPRING WITH AUXILLIARY &amp; SHOCK ABSORBER,REAR LEAF AW100,W100-200-300-400</b>				
18				INTERLINER,Leaf Spring
	3492 073	AR		2-1/2 x 2-1/2" Long
	1948 396	AR		2-1/2 x 3-1/2" Long
	3638 666	AR		3 x 3-1/2" Long
	3549 063	AR		2-1/2 x 5" Long-1/2" Center Bolt Hole
19	2909 367	2	AW1,W1-2	SHACKLE,Rear Spring Rear
19	3496 094	2	W3-4	SHACKLE,Rear Spring Rear
20				BUSHING,Rear Spring Eye or Shackle
	1920 540	AR		1" O.D. x 1/2" I.D. x 2-7/8" Long
	1920 541	AR		1-1/2" O.D. x 3/4" I.D. x 2-7/8" Long
	2907 869	AR		1-1/4" O.D. x 5/8" I.D. x 2-7/8" Long
21				BOLT,Main Spring Center
	593 805	2		3/8-24 x 5" Long
	2954 709	2		3/8-24 x 5" Long
	2961 234	2		3/8-24 x 2-1/8" Long
	2953 076	2		3/8-24 x 3-1/4" Long
	120 369	2		NUT,Spring Center Bolt
22				BRACKET-Refer To Group 13
23	152 342	AR		NUT-5/16-18
24	3897 293	2	W2-3-4	BUMPER,Rear Spring Rear Axle
25	180 078	AR	W2-3-4	BOLT-5/16-18 x 7/8"
26	9422 752	AR		BOLT-1/2 -20 x 2.75"
27	152 349	AR		NUT-1/2 -20
28	9417 668	8		NUT
29	9416 107	AR		NUT-3/8-16
30	3897 290	2	AW1,W1	BRACKET,Spring Bumper To Frame
31	181 112	AR		BOLT-3/8-16 x 1"
32	4014 050	2	AW1,W1	BUMPER,Rear Spring
33	152 349	AR		NUT-1/2-20
34	1319 554	2		RETAINER,Shock Bushing-Outer-Small Dia. Hole
34	1319 555	2		RETAINER,Shock Bushing-Inner-Large Dia. Hole
35				PLATE-Refer To Item 13
36	4026 821	2	AW1,W1-2	SHOCK ABSORBERS,Rear-Light Duty
36	4086 415	2	ALL	SHOCK ABSORBER-Rear-Heavy Duty
37	1319 902	AR		BUSHING,Shock Pivot-Light Duty-Upper or Lower
37	2229 479	AR		BUSHING,Shock Pivot-Heavy Duty-Upper or Lower
38	181 088	AR		BOLT-5/16-18 x 7/8"
39				SPACER
40	3496 691	2		BUMPER,Rear Spring
41	152 342	AR		NUT-5/16-18

**LIGHT** A = All Sport Utility (Ramcharger). B = All Compact Models. D = Conventional Cab.  
**DUTY** AD = 2 Wheel Drive Only (Ramcharger). CB-MB = Compact Front Section Only. W = Conventional Cab 4 Wheel Drive.  
**CODES:** AW = 4 Wheel Drive Only (Ramcharger). P = Forward Control Chassis. M = Motor Home.

**MEDIUM-HEAVY CODES:** XNT = Low Cab Forward. D = Conventional Cab. S = School Bus. W = 4-Wheel Drive.

AR=Use as Required

# =New Part Number

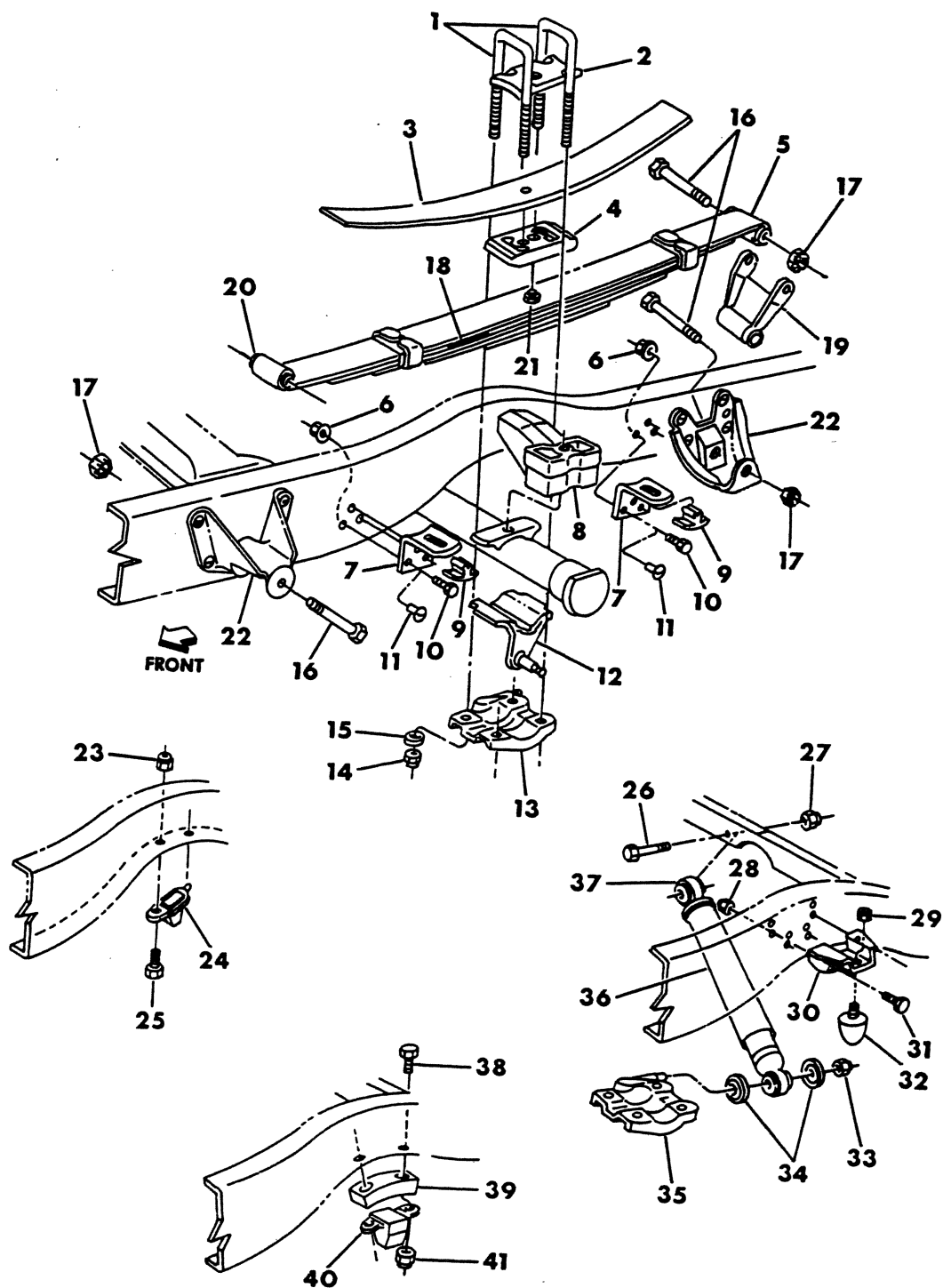
Printed in U.S.A.

June, 1982



8317 1050

## SPRING WITH AUXILLIARY AND SHOCK ABSORBER, REAR LEAF-RD200



ITEM	PART NUMBER	QTY	MODEL	DESCRIPTION
<b>SPRING WITH AUXILLIARY AND SHOCK ABSORBER, REAR LEAF-RD200</b>				
1				CLIP,Rear Spring
	3633 999	4		9/16-18 x 3.10 x 16" Long-10.75" Thd.
	3780 511	2		CLIP PACKAGE,Rear Spring
				Consists Of:
				2-3633999 Clip
				1-3496266 Seat,Clip
				4-6029459 Nut
2	3496 266	2		SEAT,Rear Spring Clip
3	3897 287	2		SPRING,Rear Auxiliary-585 Lb. 1 Leaf
4	3633 720	2		SPACER,Auxiliary Spring
5	3897 284	2		SPRING,Rear Main-2500/2750 Lb.,6 Leaf
6	6025 020	12		NUT,Bracket Bolt-3/8-16
7	3633 955	4		BRACKET,Aux. Spring Bumper
8	4030 938-9	1		SPACER,Rear Spring To Axle
9	3633 956	4		PAD,Aux.Spring Bumper Bracket
10	9416 171	12		BOLT-3/8-16 x 1.25
11	108 684	12		RIVET
12				BRACKET,Sway Bar With Dual Wheels
13	3736 402-3	1		PLATE with STUD,Rear Spring Clip
14	6029 459	8		NUT-9/16-18
15	6024 691	8		WASHER,Coned
16	2907 406	AR		BOLT,Rear Spring-5/8-18 x 3.88
17	1948 877	AR		NUT,Rear Spring Bolt-5/8-18
18	3492 073	AR		INTERLINER,leaf spring-2 1/2 x 2 1/2" long
18	3549 063	AR		INTERLINER,leaf spring-2 1/2 x 5" long-1/2" ctr bolt hole
19	2909 367	2		SHACKLE,Rear Spring Rear
20				BUSHING,Rear Spring Eye or Shackle
	1920 540	AR		1" O.D. x 1/2" I.D. x 2-7/8" Long
	1920 541	AR		1-1/2" O.D. x 3/4" I.D. x 2-7/8" Long
	2907 869	AR		1-1/4" O.D. x 5/8" I.D. x 2-7/8" Long
21	593 805	2		BOLT,Main Spring Center
	120 369	2		NUT,Main Spring Center Bolt
22				BRACKET-Refer To Group 13
23	152 342	AR		NUT-5/16-18
24	3897 293	2		BUMPER,Rear Spring Rear Axle
25	180 078	AR		BOLT-5/16-18 x 7/8
26	9422 752	AR		BOLT-1/2-20 x 2.75
27	152 349	AR		NUT-1/2-20
28	9417 668	8		NUT
29	9416 107	AR		NUT-3/8-16
30				BRACKET,Rear Spring Bumper To Frame
31	181 112	AR		BOLT-3/8-16 x 1
32				BUMPER,Rear Spring
33	152 349	AR		NUT-1/2-20
34	1319 554	2		RETAINER,Shock Bushing-Outer-Small Dia. Hole
34	1319 555	2		RETAINER,Shock Bushing-Inner-Large Dia. Hole
35				PLATE-Refer To Item 13
36	4026 821	2		SHOCK ABSORBER-Rear-Light Duty-3500 Lb. Axle
37	1319 902	AR		BUSHING,Light Duty-Upper Or Lower Shock Absorber

**LIGHT** A = All Sport Utility (Ramcharger).  
**DUTY** AD = 2 Wheel Drive Only (Ramcharger).  
**CODES:** AW = 4 Wheel Drive Only (Ramcharger).

B = All Compact Models.  
 CB-MB = Compact Front Section Only.  
 P = Forward Control Chassis.

D = Conventional Cab.  
 W = Conventional Cab 4 Wheel Drive.  
 M = Motor Home.

**MEDIUM-HEAVY CODES:** XNT = Low Cab Forward. D = Conventional Cab. S = School Bus. W = 4-Wheel Drive.

AR=Use as Required

# =New Part Number

Printed in U.S.A.

June, 1982

# 1978-81 LIGHT DUTY TRUCK PARTS CATALOG

SPRINGS

ITEM	PART NUMBER	QTY	MODEL	DESCRIPTION
<b>SPRING WITH AUXILLIARY AND SHOCK ABSORBER, REAR LEAF-RD200</b>				
37	2229 479	AR		BUSHING,Heavy Duty Upper Or Lower Shock Absorber
38	181 088	AR		BOLT-5/16-18 x 7/8
39				SPACER
40	3496 691	2		BUMPER,Rear Spring
41	152 342	AR		NUT-5/16-18

<b>LIGHT</b>	A = All Sport Utility (Ramcharger).	B = All Compact Models.	D = Conventional Cab.
<b>DUTY</b>	AD = 2 Wheel Drive Only (Ramcharger).	CB-MB = Compact Front Section Only.	W = Conventional Cab 4 Wheel Drive.
<b>CODES:</b>	AW = 4 Wheel Drive Only (Ramcharger).	P = Forward Control Chassis.	M = Motor Home.

---

**MEDIUM-HEAVY CODES:** XNT = Low Cab Forward. D = Conventional Cab. S = School Bus. W = 4-Wheel Drive.

---

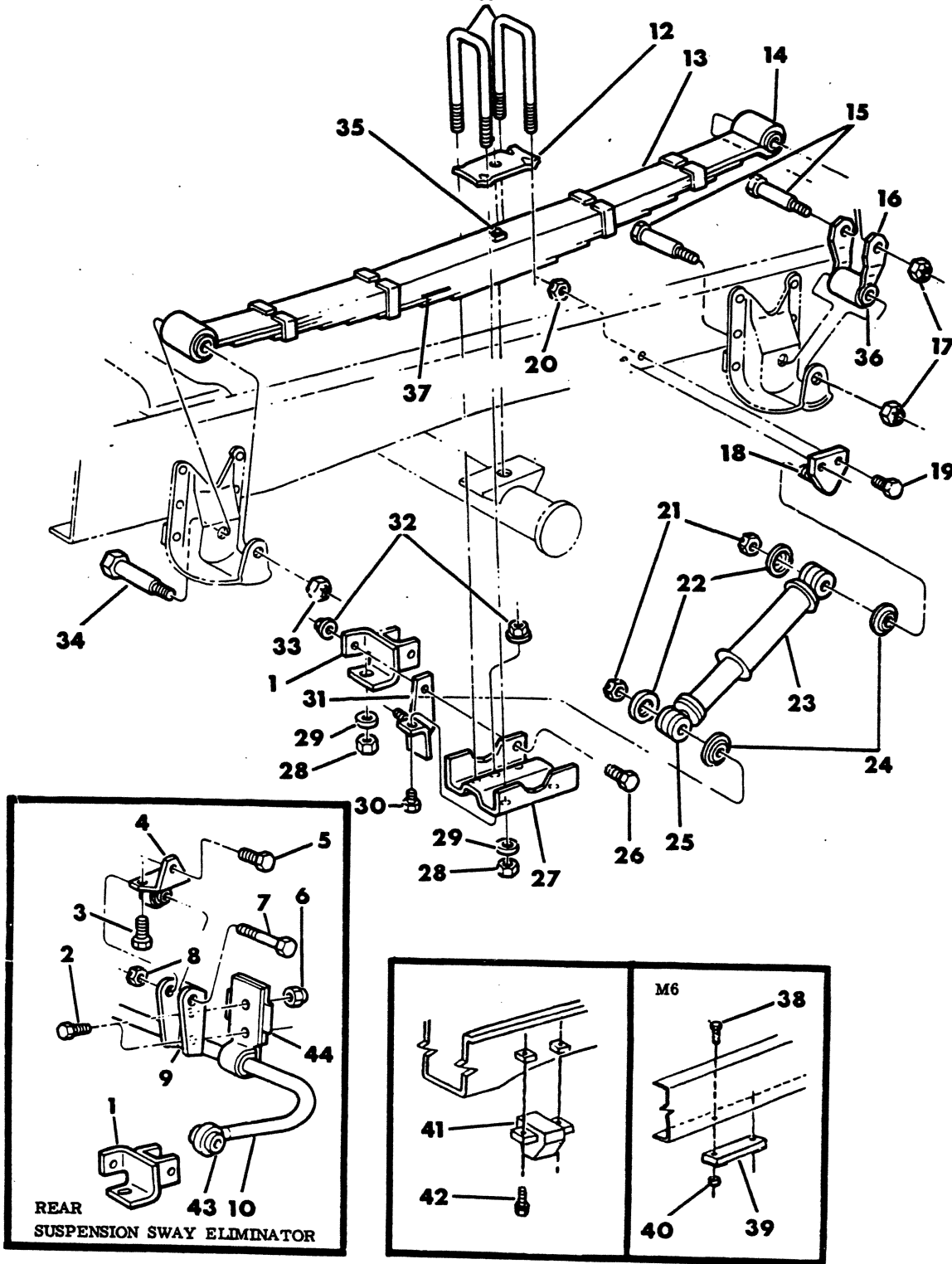
AR=Use as Required      # =New Part Number      Printed in U.S.A.      June, 1982





8317 1200B

## SPRING WITH SHOCK ABSORBER, REAR LEAF M200-400-500-600



ITEM	PART NUMBER	QTY	MODEL	DESCRIPTION
<b>SPRING WITH SHOCK ABSORBER,REAR LEAF M300-400-500-600</b>				
1	3638 664-5	1	M-4-5	BRACKET,sway eliminator bracket axle-1978-79
1	4167 466-7	1	M3-4-5	BRACKET,rear shock absorber axle-1980
1	4030 342-3	1	M6	BRACKET,Shock And Sway Bar Axle
2	9418 505	AR	M-4-5-6	BOLT-1/2-13x1.50
3	181 163	AR	M-4-5-6	BOLT-1/2-13x1.25
4	3641 821	2	M-4-5-6	BRACKET,Elim. Shaft Link Frame
5	181 163	AR	M-4-5-6	BOLT,Link Frame Bracket-1/2-13x1.25
6	152 368	AR	M-4-5-6	NUT
7	271 885	AR	M-4-5-6	BOLT,Pivot-5/8-11x3.25
8	152 372	2	M-4-5-6	NUT
9	3638 655	2	M-4-5-6	LINK,Sway Elim. Shaft
10	4036 996	1	M4-5-6	SHAFT,Rear Sway Eliminator
11	3820 800	4	M3-4-5	CLIP,Rear Spring
11	2961 778	AR	M6	CLIP,Rear Spring
12	3638 657	2	M-3-4-5	SEAT,Rear Spring Clip
12	2237 852	2	M6	SEAT,Rear Spring Clip-With 4500 Lb.Spring At Pad
12	2914 625	2	M6	SEAT,Rear Spring Clip-With 5700 Lb.Spring At Pad
13	3820 935	2	M3-4	SPRING,Rear-3400/3800 Lb.,8 Leaf
13	3820 936	2	M5-6	SPRING,Rear-4500/5000 Lb.,9 Leaf
13	4030 336	2	M6	SPRING,Rear-5700/6250 Lb.,12 Leaf
14	3638 651	4		BUSHING,Spring Eye
15	6030 144	AR		BOLT,Rear Spring Shackle Rear-3/4-10 X 5
16	4037 714	2		SHACKLE,Rear Spring
17	152 354	AR		NUT,Rear Shackle Bolt-3/4-10
18	3638 678	2		BRACKET,Rear Shock Upper Frame
19	181 163	AR		BOLT,Shock Frame Bracket
20	152 348	AR		NUT,Shock Frame Bracket Bolt
21	115 731	AR		NUT-1/2-20
22	1319 554	4		RETAINER,Shock Bushing,Outer
23	3638 112	2		SHOCK ABSORBER,Rear-1-3/8" Dia.
24	1319 555	4		RETAINER,Shock Bushing-Inner
25	2229 479	4		BUSHING,Shock Absorber,Upper and Lower
26	9418 275	AR	M3	BOLT,Axle Bracket
26	6030 270	AR	M4-5-6	BOLT,Axle Bracket
27	3638 659	2	M3-4	PLATE,rear spring clip-with spicer 70 rear axle
27	3638 660	2	M5	PLATE,Rear Spring Clip
27	2509 238	2	M6	PLATE,Rear Spring Clip
28	6030 016	8	M3-4-5	NUT,Rear Spring Clip
28	2237 741	8	M6	NUT,Rear Spring Clip
29	2509 058	8	M6	WASHER,Rear Spring Clip Coned
30	181 140	AR	M3-4-5	BOLT-7/16-14x1.38
31	3638 680-1	1	M3-4-5	BRACKET,Rear Shock Axle-1978-79
31	4167 466-7	1	M3-4-5	BRACKET,Rear Shock Axle-1980
31	4030 342-3	1	M6	BRACKET,Rear Shock Axle
32		AR		NUT-7/16-14
33	152 354	AR		NUT,Rear Spring Front Eye Bolt
34	6030 144	AR		BOLT,Rear Spring Front Eye-3/4-10x5
35	593 808	2		BOLT,Main Spring Center-7/16-20x5 5/8
35	271 506	2	CB-MB4	NUT,Main Spring Center Bolt

LIGHT A = All Sport Utility (Ramcharger).

B = All Compact Models.

D = Conventional Cab.

DUTY AD = 2 Wheel Drive Only (Ramcharger).

CB-MB = Compact Front Section Only.

W = Conventional Cab 4 Wheel Drive.

CODES: AW = 4 Wheel Drive Only (Ramcharger).

P = Forward Control Chassis.

M = Motor Home.

MEDIUM-HEAVY CODES: XNT = Low Cab Forward. D = Conventional Cab. S = School Bus. W = 4-Wheel Drive.

AR=Use as Required

#=New Part Number

Printed in U.S.A.

June, 1982

# 1978-81 LIGHT DUTY TRUCK PARTS CATALOG

SPRINGS

ITEM	PART NUMBER	QTY	MODEL	DESCRIPTION
------	-------------	-----	-------	-------------

## SPRING WITH SHOCK ABSORBER, REAR LEAF M300-400-500-600

36	3638 651	2		BUSHING,Rear Spring Rear Shackle
37	3638 666	8	M3-4	INTERLINER,Leaf Spring-With 3800 Lb. Spring At Ground
37	3638 666	10	M5-6	INTERLINER,Leaf Spring-With 5000 Lb. Spring At Ground
37	4030 340	10	M6	INTERLINER,Leaf Spring-With 5700 Lb. Spring At Pad
38	9422 727	4	M6	BOLT-5/16-18x1.62" Long
39	1938 293	2	M6	BUMPER and PLATE,Rear Spring
40	152 342	4	M6	NUT-5/16-18
41	3496 691	2	M3-4-5	BUMPER,Rear Spring
42	180 078	AR	M3-4-5	BOLT,Spring Bumper
43	3638 638	2	M4-5-6	BUSHING,rear susp. sway eliminator shaft
44			M5-6	PLATE-serviced on item 10

NOTE: The Following Parts Are Not Illustrated

	4031 228	2	M6	SEAT,rear axle housing spring-with D140 rear axle
	3820 800	AR		CLIP,Rear Spring Spacer
	4167 369	2	M6	SPACER,Rear Spring To Axle

<b>LIGHT</b>	A = All Sport Utility (Ramcharger).	B = All Compact Models.	D = Conventional Cab.
<b>DUTY</b>	AD = 2 Wheel Drive Only (Ramcharger).	CB-MB = Compact Front Section Only.	W = Conventional Cab 4 Wheel Drive.
<b>CODES:</b>	AW = 4 Wheel Drive Only (Ramcharger).	P = Forward Control Chassis.	M = Motor Home.

**MEDIUM-HEAVY CODES:** XNT = Low Cab Forward. D = Conventional Cab. S = School Bus. W = 4-Wheel Drive.

AR=Use as Required

# =New Part Number

Printed in U.S.A.

June, 1982



**SPRING REPLACEMENT CHART, FRONT-LIGHT DUTY**

**ILLUSTRATION NOT AVAILABLE AT TIME OF PUBLICATION**

FRONT SPRING ASSEMBLY	NO.1 LEAF	NO.2 LEAF	NO.3 LEAF
-----------------------	-----------	-----------	-----------

SPRING REPLACEMENT CHART,FRONT-LIGHT DUTY

3637929	1939 451	3637 930	2954 362
3637931	1939 451	3637 930	2954 364
3637932	3496 839	3637 933	3496 841
3638621	3638 667	3638 672	3638 673
3641289	3641 544	3651 545	3641 546
3732545	1939 451	3732 547	3732 548
3820935	3638 674	3820 841	3820 842
3821848	1939 451	3637 930	2954 364
3821852	1939 451	3732 547	3732 548
3828910	3828 915	3828 916	
3879207	3827 831	3827 832	
3893747	3828 913	3828 914	
3894044	3828 913	3894 045	
4031289	3898 989	3898 990	3898 991
4089715	3638 667	3638 672	3638 673

**LIGHT** A = All Sport Utility (Ramcharger). B = All Compact Models. D = Conventional Cab.  
**DUTY** AD = 2 Wheel Drive Only (Ramcharger). CB-MB = Compact Front Section Only. W = Conventional Cab 4 Wheel Drive.  
**CODES:** AW = 4 Wheel Drive Only (Ramcharger). P = Forward Control Chassis. M = Motor Home.

**MEDIUM-HEAVY CODES:** XNT = Low Cab Forward. D = Conventional Cab. S = School Bus. W = 4-Wheel Drive.

AR=Use as Required

# =New Part Number

Printed in U.S.A.

June, 1982

**SPRING REPLACEMENT CHART, REAR-LIGHT DUTY**

**ILLUSTRATION NOT AVAILABLE AT TIME OF PUBLICATION**



REAR SPRING ASSEMBLY	NO.1 LEAF	NO.2 LEAF	NO.3 LEAF
----------------------	-----------	-----------	-----------

SPRING REPLACEMENT CHART,REAR-LIGHT DUTY

1938075	1938296	2228546	2229732
2952953	2954409	1920566	2230014
2952954	2954409	1920566	1922329
2961001	2961002	2961003	2961004
2961005	2961006	2961007	2961008
2961009	2961010	2961011	2961012
2961013	2961014	2961015	2961016
2961017	2961018	2961019	2961020
3492081	3632851	3632852	3632859
3492083	3632857	3632858	3632859
3492084	3632860	3632861	3632862
3492085	3632863	3632864	3632865
3492086	3632866	3632867	3632868
3492087	3632869	3632870	3632871
3492088	3632872	3632867	3632868
3492089	3497966	3497967	3497967
3492939	2961006	2961007	2961008
3496670	3632854	3632855	3634858
3496756	3496759	3496760	3496761
3496757	3496759	3496762	3496763
3496758	3496759	3496762	3496764
3497801	3497802	3497803	3497804
3637085	3640057	3640058	3640059
3638149	3637573	3638193	3638438
3638150	3638194	3638195	3638196
3638190	3638197	3638198	3638199
3638595	3732020	3732021	3732022
3732569	3632860	3632855	3634858
3732570	3632860	3632858	3634859
3736958	3736959	3736960	3736961
3736962	3736963	3736964	3736965
3736966	3736967	3736968	3736969
3736970	3823368	3823372	
3736973	3823369	3823373	
3820934	3638674	3638677	3638683
3820935	3638674	3820841	3820841
3820936	3638674	3638682	3640176
3823868	3638197	3638198	3638199
3897279	3632854	3632855	3634858
3897280	3632860	3632855	3634858
3897281	3632857	3632858	3632859
3897283	3632863	3632864	3632865
3897284	3632866	3632867	3632868
3897285	3632872	3632867	3632868
3898810	3898809	2961003	2961004
3898811	3898809	2961007	2961008
3898812	3898981	3898982	3898983
4030278	3898981		
4030336	3638674	4030338	4030339

**LIGHT** A = All Sport Utility (Ramcharger). B = All Compact Models. D = Conventional Cab.  
**DUTY** AD = 2 Wheel Drive Only (Ramcharger). CB-MB = Compact Front Section Only. W = Conventional Cab 4 Wheel Drive.  
**CODES:** AW = 4 Wheel Drive Only (Ramcharger). P = Forward Control Chassis. M = Motor Home.

**MEDIUM-HEAVY CODES:** XNT = Low Cab Forward. D = Conventional Cab. S = School Bus. W = 4-Wheel Drive.

AR=Use as Required # =New Part Number Printed in U.S.A. June, 1982

# 1978-81 LIGHT DUTY TRUCK PARTS CATALOG

SPRINGS

REAR SPRING ASSEMBLY	NO.1 LEAF	NO.2 LEAF	NO.3 LEAF
----------------------	-----------	-----------	-----------

## SPRING REPLACEMENT CHART, REAR-LIGHT DUTY

4030455	4030469	4030470	4030471
4030456	3632860	3632858	4030472
4032300-AUXILIARY	4032445	4032446	4032447
4036772	3898809	2961007	2961008
4036773	3898981	3898982	3898983
4036774	3898981		
4036971	4037137	4037138	4037139
4036972	4037134	4037135	4037136
4039160	4039228	4039229	4039230
4112894	4112895	4112896	
4115478	4039 777	4039 778	4039 779
4115479	4039 774	4039 775	4039 776
4115480	4039 780	4039 781	4039 782
4115481	3898 981	4088 929	4088 930
4089143	4088 959	4088 960	4088 961
4089144	4089 301	4089 302	4089 303

**LIGHT DUTY CODES:** A = All Sport Utility (Ramcharger). B = All Compact Models. D = Conventional Cab.  
 AD = 2 Wheel Drive Only (Ramcharger). CB-MB = Compact Front Section Only. W = Conventional Cab 4 Wheel Drive.  
 CODES: AW = 4 Wheel Drive Only (Ramcharger). P = Forward Control Chassis. M = Motor Home.

**MEDIUM-HEAVY CODES:** XNT = Low Cab Forward. D = Conventional Cab. S = School Bus. W = 4-Wheel Drive.

AR=Use as Required

# =New Part Number

Printed in U.S.A.

June, 1982