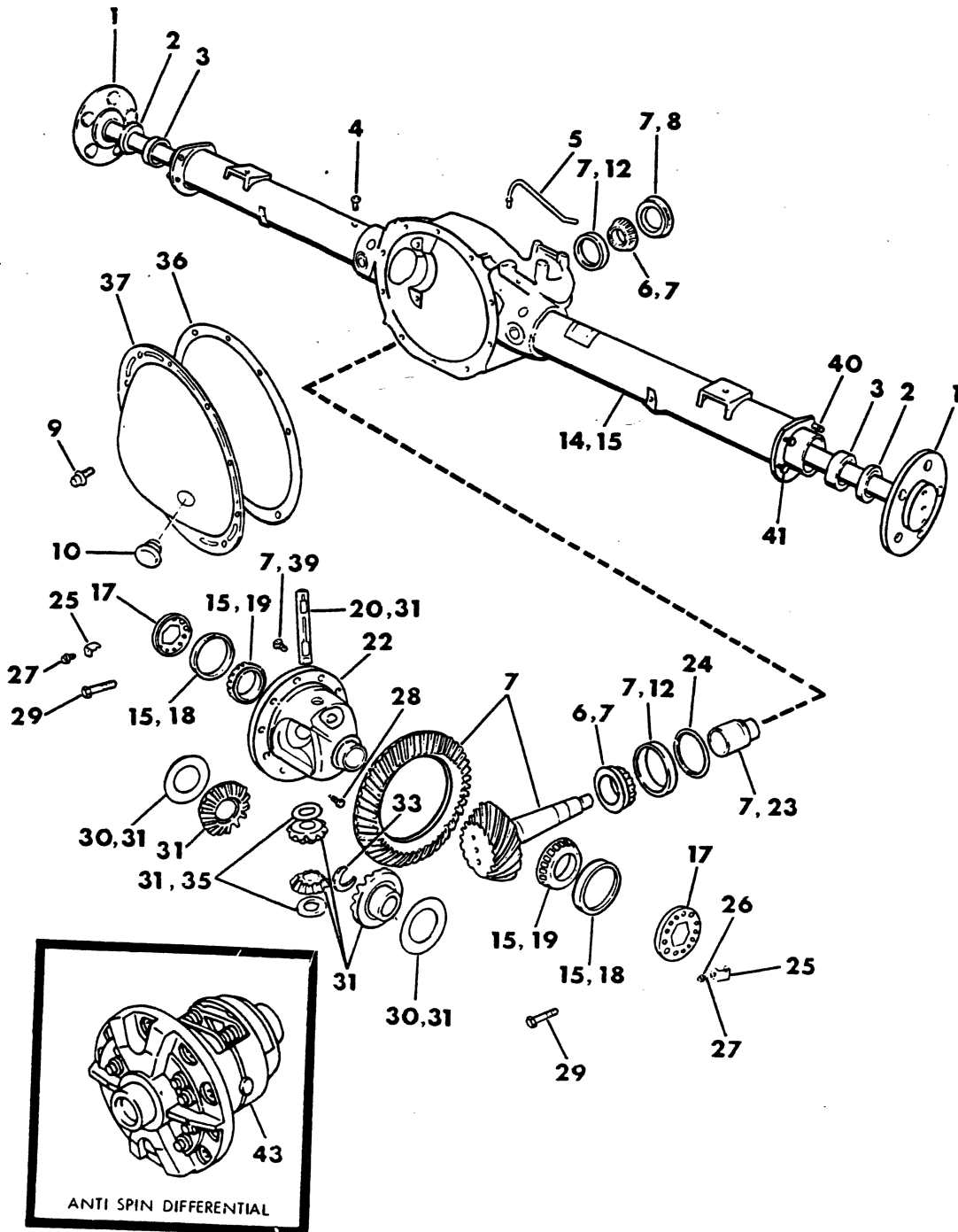


GROUP 3 - REAR AXLE

AXLE,REAR CHRYSLER-8 3/8 A,D,W1,B1-2	Fig. 3-100
AXLE,REAR CHRYSLER-9 1/4 D,W1,AD,B1-2,MB	Fig. 3-300
AXLE,REAR Spicer-70-7200,7500,8000 lb. D,W3,CB,MB,P3,M3-4	Fig. 3-800
AXLE,REAR SPICER 70-10000 LB. M5	Fig. 3-1450
AXLE,REAR ROCKWELL-F130N,D140-13000,13500 CAPACITY M600-1978-81	Fig. 3-1500
AXLE,REAR-(WITHOUT TRAC-LOK) Spicer-60-5500,6200 lb. D2-3,W2,B3,CB,MB,M3	Fig. 3-500
AXLE-REAR-(WITH TRAC-LOK) Spicer-60-5500,6200 LB. D2-3,W2,B3,CB,MB,M3,RD2	Fig. 3-400
DIFFERENTIAL,REAR AXLE-WITH ANTI-SPIN SPICER 70-4 PINION-7500 LB. D300-400,W300-400	Fig. 3-1000
DIFFERENTIAL,REAR AXLE-WITHOUT ANTI-SPIN Spicer-70-2 Pinion-7200,7500,8000,10,000 lb. P,W-D3-4,CB,MB,M3-4-5	Fig. 3-1400

8303 100

AXLE, REAR
CHRYSLER-8 3/8
A,D,W1,B1-2



ITEM	PART NUMBER	QTY	MODEL	DESCRIPTION
------	-------------	-----	-------	-------------

AXLE,REAR
CHRYSLER-8 3/8
A,D,W1,B1-2

NOTE: DIFFERENTIAL and CARRIER, w/TUBES ASSEMBLIES Consist of the following items - Except items 1,2,3,40, and 41

DIFFERENTIAL & CARRIER-WITHOUT ANTI-SPIN

	4030 235	1	AD,D1	2.71 ratio
	4030 231	1	B1-2	2.71 ratio
	4115 817	1	AD,D1	2.94 ratio-1979-81
	4115 819	1	B1-2	2.94 ratio-1978-80-81
	4030 232	1	B1-2	3.21 ratio
	4030 236	1	A,W1,D	3.21 ratio
	4030 233	1	B1-2	3.55 ratio
	4030 237	1	A,W1,D	3.55 ratio

DIFFERENTIAL & CARRIER-WITH ANTI-SPIN

	4088 090	1	AD,D1	2.71 ratio
	4088 091	1	B1-2	2.71 ratio
	4115 818	1	AD,D1	2.94 ratio-1979-80
	4115 420	1	B1-2	2.94 ratio-1979-80
	4086 105	1	B1-2	3.21 ratio
	4086 106	1	A,W1,D	3.21 ratio
	4030 234	1	B1-2	3.55 ratio
	4030 238	1	A,W1,D	3.55 ratio
1	3507 172	2	A,D,W1	SHAFT,drive
1	3496 577	2	B1-2	SHAFT,drive
2	2931 875	2	All	SEAL,drive shaft bearing outer
3	3744 495	2	All	BEARING,drive shaft
4		1	All	SCREW
5	3723 238	1	All	TUBE, Vent
6	2070 316	1	All	CONE,drive pinnion bearing front
6	2800 484	1	All	CONE,drive pinnion bearing rear
7				GEAR & PINION SET PKG. (includes bearings seal, spacer and screws)
7	3837 580	1		2.71 ratio
7	3837 581	1	All	2.94 ratio
7	3837 582	1	All	3.21 ratio
7	3837 583	1	All	3.55 ratio
8	2881 041	1	All	SEAL,drive pinnion front bearing oil
9	6031 645	10	All	SCREW & WASHER,cover
10	3723 687	1	All	PLUG, Cover Filler
12	2070 317	1	All	CUP,drive pinnion bearing front
12	2800 485	1	All	CUP,drive pinnion bearing rear
14	4030 651	1	A,D,W1	CARRIER, w/TUBES, Drive Pinion
15	4026 526	1	B1-2	CARRIER, w/TUBES PACKAGE (Includes Diff. BEARINGS)
16		2	All	CAP (Serviced in Items 14 and 15)
17	3507 876	2	All	ADJUSTER,differential bearing
18	3723 569	2	All	CUP,rear axle diff. bearing-3 1/16 O.D.

LIGHT DUTY CODES: A = All Sport Utility (Ramcharger). B = All Compact Models. D = Conventional Cab.
AD = 2 Wheel Drive Only (Ramcharger). CB-MB = Compact Front Section Only. W = Conventional Cab 4 Wheel Drive.
CODES: AW = 4 Wheel Drive Only (Ramcharger). P = Forward Control Chassis. M = Motor Home.

MEDIUM-HEAVY CODES: XNT = Low Cab Forward. D = Conventional Cab. S = School Bus. W = 4-Wheel Drive.

AR=Use as Required

=New Part Number

Printed in U.S.A.

June, 1982

1978-81 LIGHT DUTY TRUCK PARTS CATALOG

REAR AXLE

ITEM	PART NUMBER	QTY	MODEL	DESCRIPTION
AXLE,REAR CHRYSLER-8 3/8 A,D,W1,B1-2				
19	1790 541	2	All	CONE,rear axle differential bearing
20				SHAFT,differential pinion-serviced in item 31
22	2881 423	1	All	CASE,differential
23	3507 575	1	All	SPACER,pinion bearing adjuster
24				SHIM,drive pinnion bearing rear
	3723 620	AR	All	.020
	3723 621	AR	All	.021
	3723 623	AR	All	.023
	3723 625	AR	All	.025
	3723 627	AR	All	.027
	3723 628	AR	All	.028
	3723 629	AR	All	.029
	3723 630	AR	All	.030
	3723 631	AR	All	.031
	3723 633	AR	All	.033
	3723 635	AR	All	.035
	3723 637	AR	All	.037
25	3723 571	2	All	LOCK,differential bearing adjuster1978-79-80
25	3723 859	2	All	LOCK,differential bearing adjuster1981
26		2	All	WASHER (Not Serviced)
27	6031 645	2	All	SCREW & WASHER,differential bearing adjuster lock
28	3507 724	1	All	SCREW,pinion shaft lock
29	3432 695	4	All	SCREW
30				WASHER,differential side gear thrust
	3723 582	2	All	.031-.033
	3723 865	2	All	.037
	3723 866	2	All	.042
	3723 867	2	All	.047
	4131 293	1	All	WASHER, PKG., Side Gear Thrust, (Consists of 2 Each of .031-.033; .036-.038; .041-.043; .046-.048 thk. Washers)
31	4176 754	1	ALL	GEAR & PINION PACKAGE,differential side consists of gears,pinion,washer and shaft
33	2852 883	2	All	LOCK, Drive Shaft
35	2852 912	2	All	WASHER, Pinion Thrust, w/ o Anti Spin
36			All	GASKET,cover-use liquid sealer part #4026070
37	4049 689	1	All	COVER & PLUG PACKAGE,rear axle housing
39	4131 255	10	All	SCREW Pkg, Drive Gear
40	3723 668	AR	All	BOLT,brake support to axle
41	152 345	10	All	NUT
43	3723 690	1		DIFFERENTIAL,rear axle-with anti spin consists of case,gears,pinion and springs

NOTE: The Following Parts Are Not Illustrated.

3432 695	4	SCREW,Diff. Brg. Cap
3723 587	1	COUNTERWEIGHT, use w/Anti Spin
3432 698	10	BOLT,drive shaft wheel drive
2931 817	AR	SHIM,drive pinnion front bearing adjusting

LIGHT DUTY CODES:	A = All Sport Utility (Ramcharger).	B = All Compact Models.	D = Conventional Cab.
	AD = 2 Wheel Drive Only (Ramcharger).	CB-MB = Compact Front Section Only.	W = Conventional Cab 4 Wheel Drive.
	AW = 4 Wheel Drive Only (Ramcharger).	P = Forward Control Chassis.	M = Motor Home.
MEDIUM-HEAVY CODES:	XNT = Low Cab Forward.	D = Conventional Cab.	S = School Bus. W = 4-Wheel Drive.

AR=Use as Required

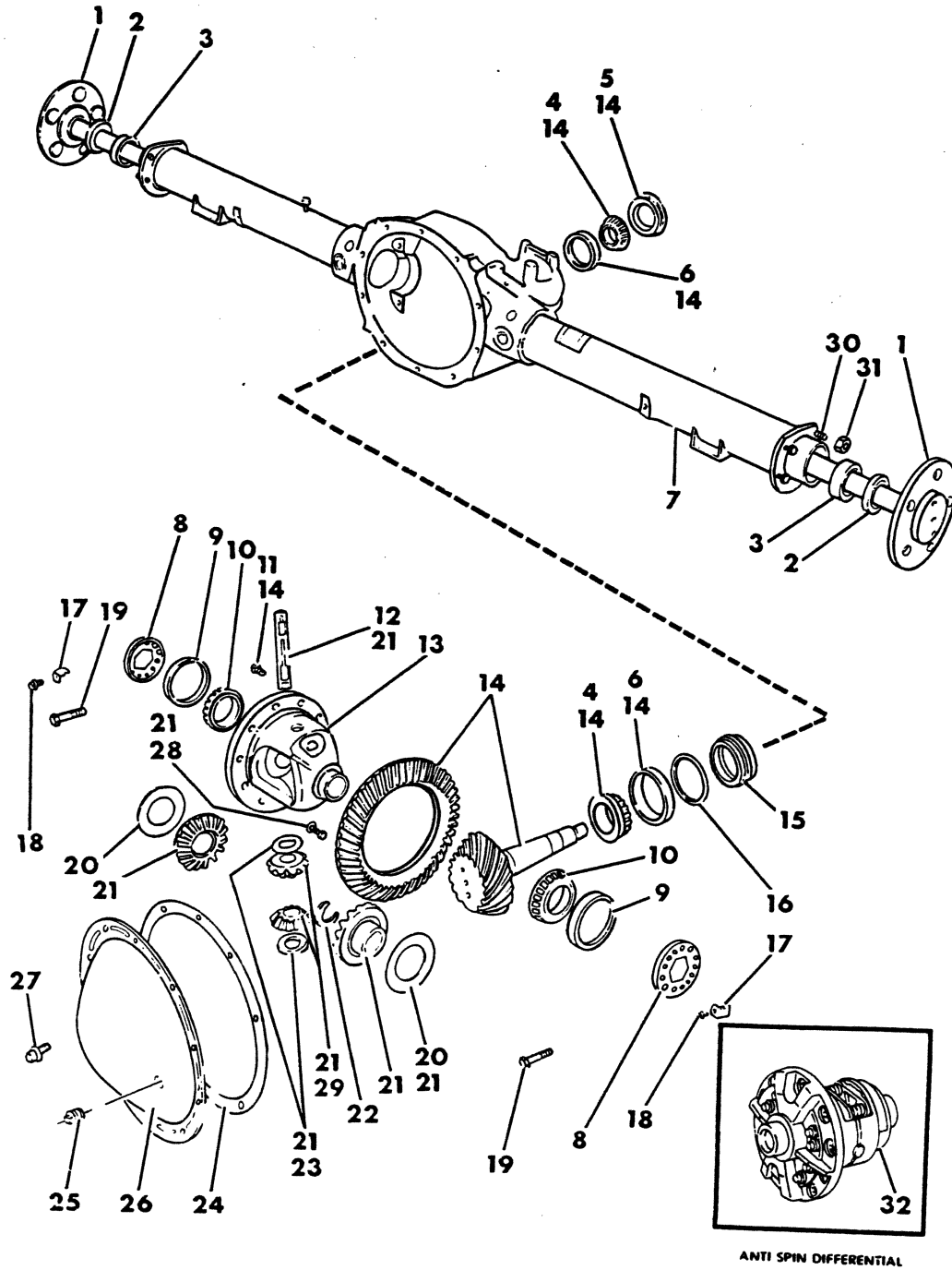
= New Part Number

Printed in U.S.A.

June, 1982

8303 300

AXLE, REAR
CHRYSLER-9 1/4
D, W1, AD, B1-2, MB



ITEM	PART NUMBER	QTY	MODEL	DESCRIPTION
------	-------------	-----	-------	-------------

AXLE,REAR
CHRYSLER-9 1/4
D,W1,AD,B1-2,MB

NOTE: Differential and Carrier Assemblies Consist of the following list of items except items 1,2,3 and 31

DIFFERENTIAL & CARRIER-without anti-spin

3822 948	1	B1-2	2.71 ratio
4030 909	1	AD,D1	2.71 ratio
4164 914	1	AW,W1,D1	2.71 ratio-1980-81
4213 471	1	B2	2.94 ratio-1980-81
4164 916	1	AW,W,D	2.94 ratio-1980-81
3822 920	1	B1-2	3.21 ratio
4030 910	1	A-W1,D	3.21 ratio-1978
4115 813	1	A,W1,D	3.21 ratio-1979-80-81
4116 514	1	B2,AW1,W	3.21 ratio-1980
3822 913	1	B2	3.21 ratio-1979-80-81
4115 813	1	AW1,W1	3.23 ratio-1980
3822 913	1	B2	3.23 ratio-1980
3822 923	1	B2,MB2	3.54 ratio-1979-80-81
4115 815	1	AW1,W1,D1	3.54 ratio-1979-80-81
3822 931	1	B1-2	3.55 ratio-1978
4030 912	1	A,W1,D	3.55 ratio-1978
4030 914	1	A,W1,D	3.90 ratio
4213 508	1	MB2	3.90 ratio

DIFFERENTIAL & CARRIER-with anti spin

4089 089	1	B1-2	2.71 ratio
4164 917	1	AD1,D1	2.94 ratio-1980-81
4115 814	1	A-W1,D	3.20 ratio-1979-80-81
3822 921	1	B1-2	3.21 ratio-1978
3822 914	1	B1-2	3.21 ratio-1979-80-81
4030 911	1	A,W1,D	3.21 ratio-1978
3822 914	1	B2	3.23 ratio-1980
3822 932	1	B1-2	3.55 ratio-1978
3822 924	1	B2	3.55 ratio-1979
4013 913	1	A,W1,D	3.55 ratio-1978
4115 816	1	A,W1,D	3.55 ratio-1979

1	3507 686	2	A-D-W1	SHAFT,drive-1978
1	3723 824	2	W1-AW1	SHAFT,drive-1979
	3723 824	2	AD1,D1	SHAFT,drive-1979-80-81
	3732 078	2	B1,2	SHAFT, Drive
	4037 726	2	W1,AW	Shaft,drive-w/5 1/2" bolt circle-1980-81
2	2931 875	2	All	SEAL, Drive Shaft Brg. Oil
3	3744 495	2	All	BEARING, Drive Shaft

LIGHT A = All Sport Utility (Ramcharger). B = All Compact Models. D = Conventional Cab.
DUTY AD = 2 Wheel Drive Only (Ramcharger). CB-MB = Compact Front Section Only. W = Conventional Cab 4 Wheel Drive.
CODES: AW = 4 Wheel Drive Only (Ramcharger). P = Forward Control Chassis. M = Motor Home.

MEDIUM-HEAVY CODES: XNT = Low Cab Forward. D = Conventional Cab. S = School Bus. W = 4-Wheel Drive.

AR=Use as Required

= New Part Number

Printed in U.S.A.

June, 1982

1978-81 LIGHT DUTY TRUCK PARTS CATALOG

REAR AXLE

ITEM	PART NUMBER	QTY	MODEL	DESCRIPTION
AXLE,REAR				
CHRYSLER-9 1/4				
D,W1,AD,B1-2,MB				
4	1820 552	1	All	CONE,drive pinion front bearing
	2852 731	1	All	CONE,drive pinion rear bearing
5	2931 862	1	All	SEAL,drive pinion front bearing
6	1820 551	1	All	CUP,drive pinion front bearing
	2852 732	1	All	CUP,drive pinion rear bearing
7	4030 254	1	A-D-W1	CARRIER & TUBE,drive pinion
	3822 909	1	B,MB	CARRIER & TUBE,drive pinion
8	3507 723	2	All	ADJUSTER, Diff. Brg.
9	3723 148	2	All	CUP, Diff. Brg.
10	3723 149	2	All	CONE, Diff. Brg.
11	3723 018	12	All	SCREW, Drive Gear
12	1633 928	1	All	SHAFT, Diff. Pinion, w/o Anti Spin
13	3507 633	1	All	CASE, w/o Anti Spin
14				GEAR SET PACKAGE (consists of gear set, brgs.,spacer & seal
	3837 592	1		2.71 ratio
	3837 593	1		2.94 ratio
	3837 594	1		3.21,3.23 ratio
	3837 595	1		3.55 ratio
	3837 596	1		3.90 ratio
	3507 699	1	All	GEAR and PINION SET-3.90 Ratio Only
15	3507 678	1	All	SPACER,drive pinion bearing adjuster
16				SHIM,drive pinion bearing rear
	3432 320	AR	All	.020
	3432 321	AR	All	.021
	3432 322	AR	All	.022
	3432 323	AR	All	.023
	3432 324	AR	All	.024
	3432 325	AR	All	.025
	3432 326	AR	All	.026
	3432 327	AR	All	.027
	3432 328	AR	All	.028
	3432 329	AR	All	.029
	3432 330	AR	All	.030
	3432 331	AR	All	.031
	3432 332	AR	All	.032
	3432 333	AR	All	.033
	3432 334	AR	All	.034
	3432 335	AR	All	.035
	3432 336	AR	All	.036
	3432 337	AR	All	.037
	3432 338	AR	All	.038
17	3507 722	2	All	LOCK,diff. bearing adjuster
18	6031 645	2	All	SCREW & WASHER,differential bearing adjuster lock
19	3432 695	4	All	SCREW, Diff. Brg. Cap
20	3723 607	2	All	WASHER, Diff. Side Gear Thrust, w/o Anti Spin
20	4131 294	1	All	WASHER PKG., Side Gear Thrust (Consists of 2 Each of .031-.033-.036-.038-.041-.043-.046-048 Thk Washers) w/o Anti Spin
21	3837 591	1	All	GEAR and PINION PKG., Diff. Side, w/o Anti Spin (Consists of GEARS, PINIONS, WASHERS and SHAFT)

LIGHT	A = All Sport Utility (Ramcharger).	B = All Compact Models.	D = Conventional Cab.
BUTY	AD = 2 Wheel Drive Only (Ramcharger).	CB-MB = Compact Front Section Only.	W = Conventional Cab 4 Wheel Drive.
CODES:	AW = 4 Wheel Drive Only (Ramcharger).	P = Forward Control Chassis.	M = Motor Home.

MEDIUM-HEAVY CODES: XNT = Low Cab Forward. D = Conventional Cab. S = School Bus. W = 4-Wheel Drive.

AR=Use as Required

#=New Part Number

Printed in U.S.A.

June, 1982

ITEM	PART NUMBER	QTY	MODEL	DESCRIPTION
AXLE,REAR CHRYSLER-9 1/4 D,W1,AD,B1-2,MB				
22	2852 883	2	All	LOCK, Drive Shaft
23	3507 641	2	All	WASHER, Pinion Thrust
24			All	GASKET,cover-use liquid sealer-part # 4026070
25	3723 687	1	All	PLUG, Cover Filler
26	4049 690	1	All	COVER and PLUG PKG., (Rubber Plug)
27	6031 645	12	All	SCREW & WASHER,cover
28	3507 724	1	All	SCREW, Pinion Shaft
29	3507 606	2	All	PINION, Diff.
30	3723 669	AR		BOLT,brake support to axle
31	152 345	10	All	NUT
32	3723 691	1	All	DIFFERENTIAL ASSY.-(partial)-with anti-spin consists of:case,gears,pinions & springs

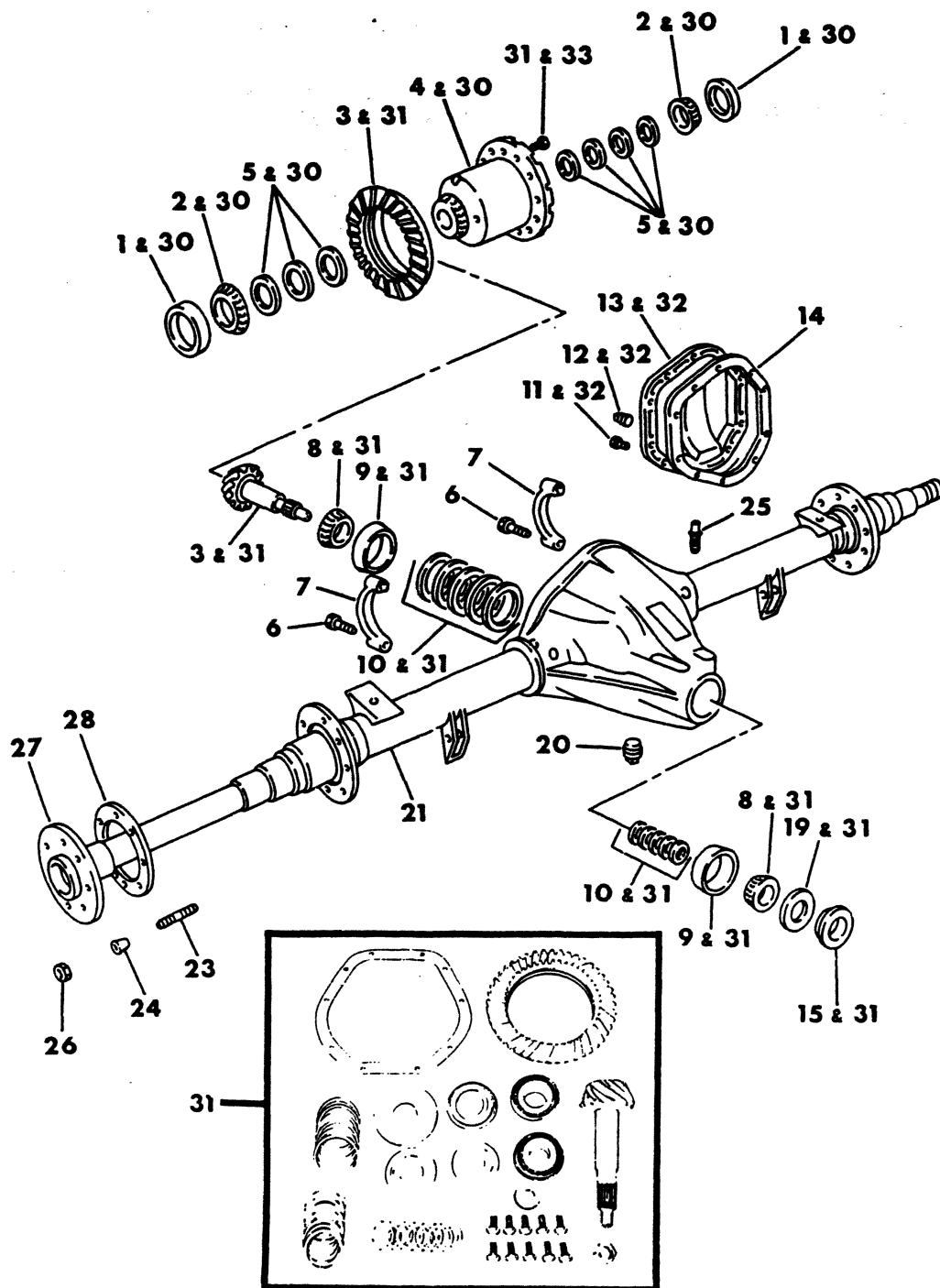
NOTE: The Following Parts Are Not Illustrated.

	3432 698	10	All	BOLT, Drive Shaft Wheel Drive
--	----------	----	-----	-------------------------------

LIGHT	A = All Sport Utility (Ramcharger).	B = All Compact Models.	D = Conventional Cab.
DUTY	AD = 2 Wheel Drive Only (Ramcharger).	CB-MB = Compact Front Section Only.	W = Conventional Cab 4 Wheel Drive.
CODES:	AW = 4 Wheel Drive Only (Ramcharger).	P = Forward Control Chassis.	M = Motor Home.
MEDIUM-HEAVY CODES: XNT = Low Cab Forward. D = Conventional Cab. S = School Bus. W = 4-Wheel Drive.			
AR=Use as Required		# =New Part Number	Printed in U.S.A.

AXLE-REAR-(WITH TRAC-LOK)
Spicer-60-5500,6200 LB.
D2-3,W2,B3,CB,MB,M3,RD2

8303 400B



ITEM	PART NUMBER	QTY	MODEL	DESCRIPTION
AXLE-REAR-(WITH TRAC-LOK)				
Spicer-60-5500,6200 LB.				
D2-3,W2,B3,CB,MB,M3,RD2				
NOTE: Axle Identification No. - Six Digit Plus a Suffix No. - Located on Axle Hsg. Right Tube.				
1	1799 295	2		CUP,differential bearing
2	1799 296	2		CONE,differential bearing
3	3893 660	1	D2,W2	GEAR and PINION SET, 3.54 ratio
4	3497 606	1	All	DIFFERENTIAL (Consists of CASE, GEARS, PINIONS, DISCS and PLATES)
5	1795 152	AR	All	SHIM-.003
	1795 153	AR	All	SHIM-.005
6		4	All	SCREW (Serviced in Item 21)
7		2	All	CAP (Serviced in Item 21)
8	1799 300	1	All	CONE,drive pinion front
8	1327 846	1		CONE,drive pinion rear
9	1799 299	1	All	CUP,drive pinion front
9	1327 847	1		CUP,drive pinion rear
10	1795 185	AR	All	SHIM,front bearing-.003
	1795 186	AR	All	SHIM,front bearing-.005
	1922 314	AR	All	SHIM,rear bearing-.003
	1922 315	AR	All	SHIM,rear bearing-.005
11	2952 474	10	All	BOLT, Cover
12	4031 945	1		PLUG,cover-(rubber)
12		1		PLUG,cover-(metal-not serviced)
13		1		COVER,differential carrier-refer to item 32
14	3634 985	1	All	GASKET, Cover
15	1795 193	1	All	SLINGER,pinion oil seal outer
19	2961 188	1	All	SEAL,drive pinion oil-1978
19	4112 001	1		SEAL,drive pinion oil-1979-80-81
20		1	All	PLUG-not serviced
21	4115 855	1	W2,D2	HOUSING,rear axle-5500 lb.-1978-79
	4213 209	1	W2,D2	HOUSING,rear axle-5500 lb.,1980-81
	4112 003	1	RD2	HOUSING,rear axle-5500 lb.,1978-79
	4213 313	1	RD2	HOUSING,rear axle-5500 lb.,1980-81
	3632 773	1	D2-3	HOUSING,rear axle-6200 lb.,1978-79
	4213 212	1	D2-3	HOUSING,rear axle-6200 lb.axle,1980-81
	4037 533	1	RD2	HOUSING,rear axle-6200 lb.axle,1980-81
	4115 853	1	B3,CB,MB	HOUSING,rear axle-5500 lb.offset diff. with single wheel-1978-79
	4213 205	1	B3,CB-MB3	HOUSING,rear axle-5500 lb.,1980-81
	4213 203	1	MB3	HOUSING,rear axle-6200 lb.,H.D.,1981
	4213 204	1	B3	HOUSING,rear axle-6200 lb.,H.D.,1980-81
	4219 035	1	M3	HOUSING,rear axle-6200 lb.,H.D.,1981
23	112 210	16	D2	STUD, 6200 lb. Axle, Budd Wheel - 1978
	112 210	16	D3	STUD-6200 lb.axle,Budd Wheel-1979
	2953 676	16	D2	STUD-6200 lb.axle,Motor Wheel-1978
	2953 676	16	D3	STUD,6200 lb.,Motor Wheel-1979
	6031 062	16	All	SCREW, Dura Lok Type, 5500 lb. Axle
24	1508 989	16		DOWEL,drive shaft
25	4032 798	1		BREATHER or VENT
26	152 347	16		NUT, Stud
27	4036 684	2	W2,D2	SHAFT,drive-5500 Lb.axle
	4037 534	2	RD2	SHAFT,drive-5500 Lb.axle

LIGHT A = All Sport Utility (Ramcharger).

B = All Compact Models.

D = Conventional Cab.

DUTY AD = 2 Wheel Drive Only (Ramcharger).

CB-MB = Compact Front Section Only.

W = Conventional Cab 4 Wheel Drive.

CODES: AW = 4 Wheel Drive Only (Ramcharger).

P = Forward Control Chassis.

M = Motor Home.

MEDIUM-HEAVY CODES: XNT = Low Cab Forward. D = Conventional Cab. S = School Bus. W = 4-Wheel Drive.

AR=Use as Required

=New Part Number

Printed in U.S.A.

June, 1982

1978-81 LIGHT DUTY TRUCK PARTS CATALOG

REAR AXLE

ITEM	PART NUMBER	QTY	MODEL	DESCRIPTION
------	-------------	-----	-------	-------------

AXLE-REAR-(WITH TRAC-LOK)
Spicer-60-5500,6200 LB.
D2-3,W2,B3,CB,MB,M3,RD2

	3633 824	2	D2-3	SHAFT,drive-6200 lb.axle
	4036 682-3	1	B3,CB,MB	SHAFT,drive-5500 lb.-w/single wheel & offset diff.
	3894 160-1	1	MB3	SHAFT,drive-6200 lb.axle-1980-81
	4036 682-3	1	B,CB,MB3	SHAFT,drive-5500 lb.axle-1980-81
	3732 948	2	M3	SHAFT,drive-6200 lb.axle-1981
	4089 284-5	2	B3	SHAFT,drive-6200 lb. H.D.
28	4032 759	2		GASKET,drive shaft-5500 lb. axle
28	2909 288	2		GASKET,drive shaft-6200 lb.axle
30	3893 661	1	RD2,D2-3	CASE ASSY.KIT,differential-3.54,4.10 ratio
30	3893 661	1	CB-MB3,B3	CASE ASSY.KIT,differential-3.54,3.73,4.10 ratio
30	4115 854	1	CB-MB3,B3	CASE KIT,differential-3.54,3.73,4.10 ratio
30	4115 854	1	RD2,D2-3,W2	CASE KIT,differential-3.54,4.10 ratio
30				consists of 3497606 diff.,diff brgs.,shims,screws
31	3893 660	1	All	GEAR & PINION KIT, 3.54 ratio
31	3894 117	1	All	GEAR & PINION KIT-4.10 ratio
32	4210 618	1	All	COVER KIT,differential carrier-except RD2
				consists of cover,gasket & bolts
32	4089 281	1	RD2	COVER KIT,differential carrier
33	1795 170	12	All	SCREW, Drive Gear

NOTE: The Following Parts Are Not Illustrated.

	4210 801	1	All	KIT, Limited Slip Diff. Disc. & Plates-1979
	2952 469	1		SLINGER,rear axle drive pinion
	4115 257	1	CB-MB3,B3	BEARING KIT,outer pinion

LIGHT DUTY CODES:	A = All Sport Utility (Ramcharger).	B = All Compact Models.	D = Conventional Cab.
	AD = 2 Wheel Drive Only (Ramcharger).	CB-MB = Compact Front Section Only.	W = Conventional Cab 4 Wheel Drive.
	AW = 4 Wheel Drive Only (Ramcharger).	P = Forward Control Chassis.	M = Motor Home.

MEDIUM-HEAVY CODES: XNT = Low Cab Forward. D = Conventional Cab. S = School Bus. W = 4-Wheel Drive.

AR=Use as Required

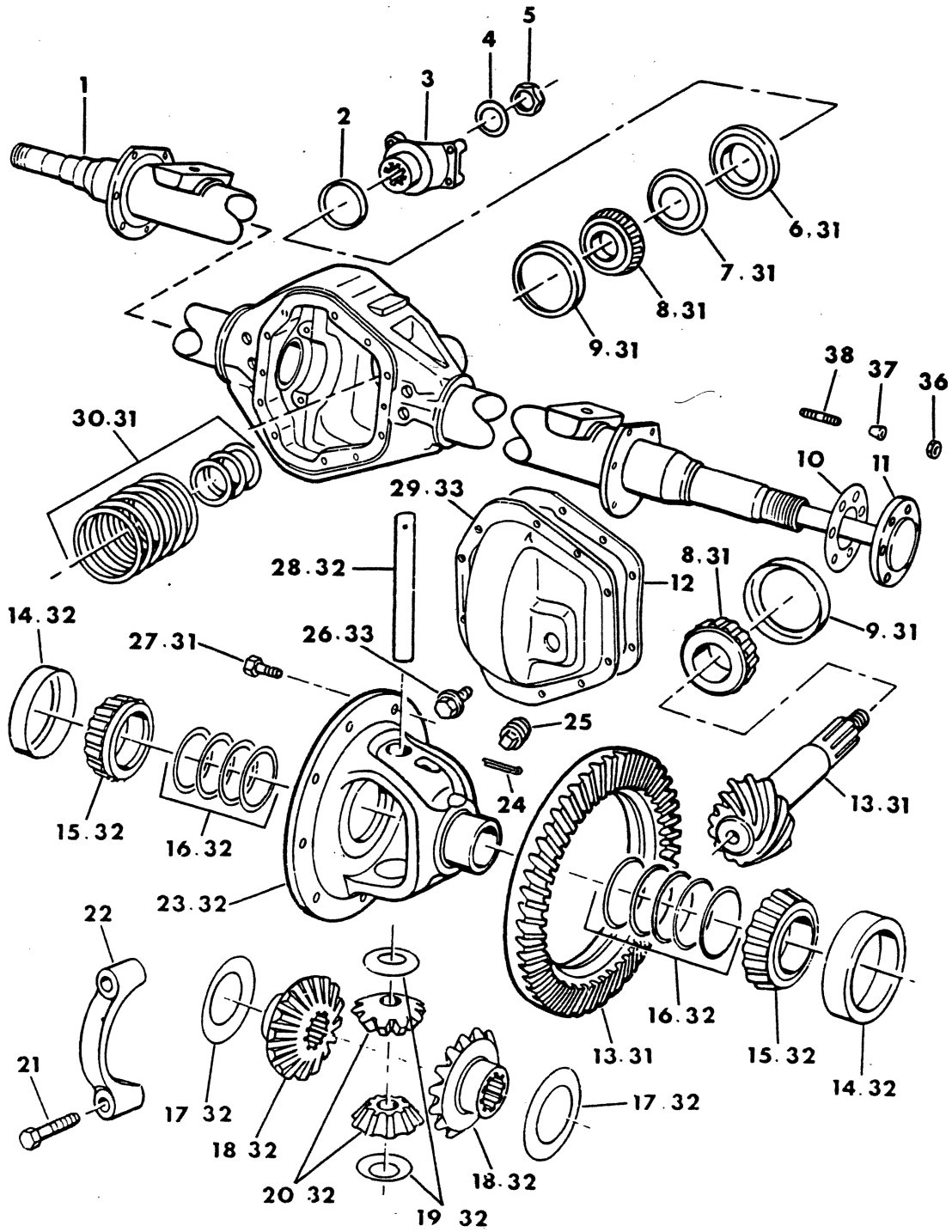
= New Part Number

Printed in U.S.A.

June, 1982

AXLE, REAR-(WITHOUT TRAC-LOK)
Spicer-60-5500, 6200 lb.
D2-3, W2, B3, CB, MB, M3

8303 500A



ITEM	PART NUMBER	QTY	MODEL	DESCRIPTION
AXLE, REAR-(WITHOUT TRAC-LOK)				
Spicer-60-5500, 6200 lb.				
D2-3, W2, B3, CB, MB, M3				
	4031 327	1	D2	AXLE, w/o Drive Shafts, 6200 lb., 4.10 Ratio-1978
	4115 780	1	W2,D2	5500 Lb. Axle, 3.54 Ratio-1978
	4036 760	1	B3	5500 lb., 4.10 to 1 Ratio
	4115 782	1	D2,W2	5500 lb., 4.10 Ratio - 1978-9
1	4115 855	1	W2,D2	HOUSING, rear axle-5500 lb.-1978-79
	4213 209	1	W2,D2	HOUSING, rear axle-5500 lb.-1980-81
	3632 773	1	D2-3	HOUSING-6200 lb.axle-1978-79
	4213 212	1	D2-3	HOUSING, 6200 lb.axle-1980-81
	4213 204	1	B3	HOUSING-6200 lb.axle-H.D.-1980-81
	4036 689	1	B3,CB,MB3	HOUSING-with 5500 lb. axle, single wheels, offset differential-1978
	4115 853	1	B3,CB,MB3	HOUSING-with 5500 lb. axle, single wheels, offset differential-1979
	4213 205	1	B3,CB-MB3	HOUSING-5500 lb.-with offset diff. & single wheels-1980-81
	3894 159	1	MB3	HOUSING-6200 lb.axle-with offset diff. & dual wheels-1978-79
	4213 203	1	MB3	HOUSING-6200 lb. axle-h.d.-with dual wheels-1980-81
	4089 279	1	B3	HOUSING-6200 lb.axle-1978-79
2		1	All	SHIELD (See Group 16)
3		1	All	YOKE-refer to group 16
4		1	All	WASHER (See Group 16)
5		1	All	NUT (See Group 16)
6	2961 188	1	All	SEAL, drive pinion oil-1978
6	4112 001	1		SEAL, drive pinion oil-1979-80-81
7	1795 193	1	All	SLINGER, pinion oil seal outer
8	1799 300	1	All	CONE, drive pinion front
8	1327 846	1	All	CONE, drive pinion rear
9	1799 299	1	All	CUP, drive pinion front
9	1327 847	1	All	CUP, drive pinion rear
10	4032 759	2		GASKET, drive shaft-5500 lb.axle
10	2909 288	2		GASKET, drive shaft-6200 lb.axle
11	4036 684	2	W2,D2	SHAFT, drive- 5500 lb. axle
	3633 824	2	D2-3	SHAFT, drive-6200 lb. axle
	4036 682-3	1	CB-MB3,B3	SHAFT, drive-5500 lb. axle, with offset diff. & single wheels
	3894 160-1	1	MB3	SHAFT, drive-6200 lb.axle, with offset diff. & dual wheels
	4089 284-5	1	B3	SHAFT, drive-6200 lb.axle, with 3.73, 4.10 ratio
12	3634 985	1	All	GASKET, cover
13	3893 660	1	All	GEAR and PINION SET (Only), 3.54 to 1 Ratio
14	1799 295	2	All	CUP, Diff. Bearing
15	1799 296	2	All	CONE, differential bearing
16	1795 152	AR	All	SHIM-.003
16	1795 153	AR	All	SHIM-.005
17	2961 848	2	All	WASHER, diff. gear thrust
18	2953 824	2	All	GEAR, Diff. Side
19	3507 543	2	All	WASHER, differential pinion thrust
20	2908 520	2	All	PINION, Diff.
21		4	All	BOLT (Serviced in Item 1)
22		2	All	CAP, Bearing (Serviced in Item 1)
23	1922 271	1	All	CASE-3.54, 4.10 Ratio
24	9432 419	1	All	PIN, Lock
25		1	All	PLUG, filler-metal
25	4031 945	1	All	PLUG, filler-rubber

LIGHT DUTY CODES: A = All Sport Utility (Ramcharger). B = All Compact Models. D = Conventional Cab.
 AD = 2 Wheel Drive Only (Ramcharger). CB-MB = Compact Front Section Only. W = Conventional Cab 4 Wheel Drive.
 AW = 4 Wheel Drive Only (Ramcharger). P = Forward Control Chassis. M = Motor Home.

MEDIUM-HEAVY CODES: XNT = Low Cab Forward. D = Conventional Cab. S = School Bus. W = 4-Wheel Drive.

AR=Use as Required

= New Part Number

Printed in U.S.A.

June, 1982

1978-81 LIGHT DUTY TRUCK PARTS CATALOG

REAR AXLE

ITEM	PART NUMBER	QTY	MODEL	DESCRIPTION
AXLE,REAR-(WITHOUT TRAC-LOK)				
Spicer-60-5500,6200 lb.				
D2-3,W2,B3,CB,MB,M3				
26	2952 474	10	All	BOLT, Cover
27	1795 170	12	All	SCREW, Drive Gear
28	1922 278	1	All	SHAFT, Pinion Cross
30	1795 185	AR	All	SHIM,front bearing adjusting-.003
	1795 186	AR	All	SHIM,front bearing adjusting-.005
	1922 314	AR	All	SHIM,rear bearing adjusting-.003
	1922 315	AR	All	SHIM,rear bearing adjusting-.005
31				GEAR & PINNION KIT,drive gear
				Consists of gear & pinion set,shims,bearings,seals,slinger & baffle.
	3893 660	1		3.54 ratio
	4167 288	1		3.73 ratio
	3894 117	1		4.10 Ratio
32	3894 162	1		DIFFERENTIAL CASE ASSY KIT-3.54,3.73,4.10 ratio
33	4210 618	1		COVER KIT,differential carrier
				Consists of cover,gasket & bolts
34	4089 282	1	All	Differential CASE KIT-3.54,4.10 ratio
35	4089 283	1	All	DIFFERENTIAL PARTS KIT (Consists of Items 18, 20, 17, 24, 19, 24, 26 and 28
36	152 347	16		NUT,stud
37	1508 989	16	All	DOWEL,drive shaft
38	112 210	16	All	STUD,drive shaft-with 6200 lb. axle
38	6031 062	16	All	STUD,drive shaft-with 5500 lb. axle-dura lok type
NOTE: THE FOLLOWING PARTS ARE NOT ILLUSTRATED.				
	4032 798	1	All	BREATHER or VENT
	2952 469	1	All	SLINGER,rear axle drive pinion

LIGHT	A = All Sport Utility (Ramcharger).	B = All Compact Models.	D = Conventional Cab.
DUTY	AD = 2 Wheel Drive Only (Ramcharger).	CB-MB = Compact Front Section Only.	W = Conventional Cab 4 Wheel Drive.
CODES:	AW = 4 Wheel Drive Only (Ramcharger).	P = Forward Control Chassis.	M = Motor Home.

MEDIUM-HEAVY CODES: XNT = Low Cab Forward. D = Conventional Cab. S = School Bus. W = 4-Wheel Drive.

AR=Use as Required

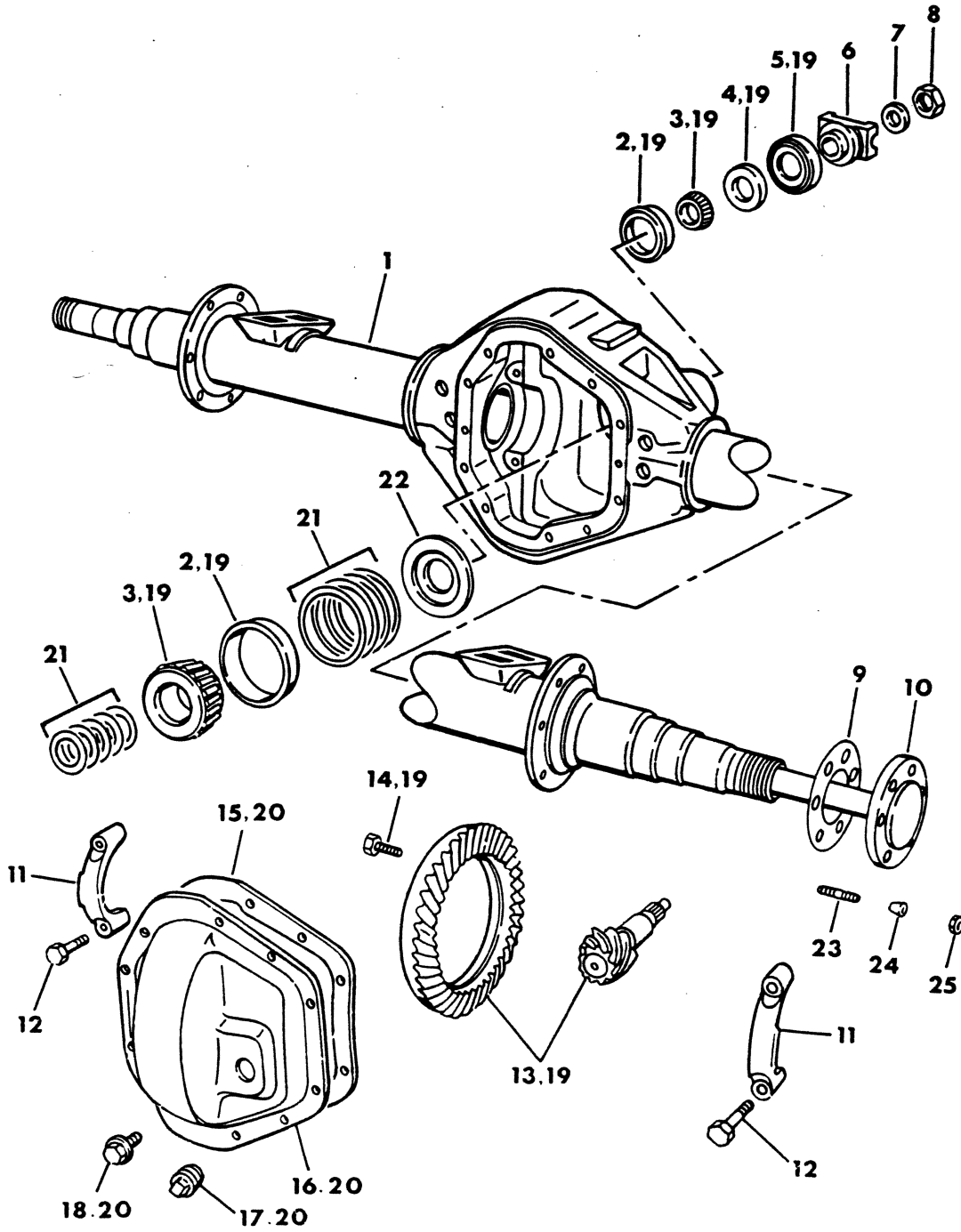
=New Part Number

Printed in U.S.A.

June, 1982

AXLE, REAR
Spicer-70-7200, 7500, 8000 lb.
D, W3, CB, MB, P3, M3-4

8303 800A



ITEM	PART NUMBER	QTY	MODEL	DESCRIPTION
AXLE,REAR				
Spicer-70-7200,7500,8000 lb.				
D,W3,CB,MB,P3,M3-4				
NOTE: Refer to description column when specifying parts.				
NOTE: Four (4) Pinion Axles have a two (2) piece Differential Case, two (2) Pinion Axles have a one piece Differential Case. Axle Identification No.-Six Digits plus a suffix No. located on Housing-right tube next to carrier				
				AXLE-WITHOUT BRAKES & AXLE SHAFTS
	3735 185	1	D3	4.56 ratio-4 pinion anti spin diff.with 7260 yoke-1978
	3735 186	1	D,W3	4.88 ratio,4 pinion anti spin diff.,W3 to use 5380 yoke-1978
	3822 850	1	D,W3	4.88 ratio-2 pinion standard diff.with 7260 yoke,W3 to use 5380 yoke-1978
	4031 344	1	D3,4	4.10 ratio-2 pinion standard diff.,D3 swepline with dual wheels & D4 ambulance-1978
	4031 343	1	D3,4	4.10 ratio-2 pinion standard diff.,D3 except swepline with dual wheels & D4 ambulance-1978
	4031 339	1	D3,4	4.56 ratio-2 pinion standard diff.,except D3 swepline & D4 ambulance-1978-9
	4031 330	1	CB3,MB4	4.10 ratio-2 pinion standard diff.,offset,except 163" w.b.-1978
	4031 338	1	P3	5.86 ratio-2pinion standard diff.-1978
	4031 332	1	M3,4	4.56 ratio-2 pinion standard diff.-1978-9
	4031 333	1	M3,4	4.88 ratio-2 pinion standard diff.-1978-79
1	3633 826	1	W3-4,D3-4	HOUSING,except swepline with dual wheels & D4 ambulance 1978-9
	4213 210	1	W3-4,D3-4	HOUSING,except swepline with dual wheels & D4 ambulance-1980-81
	3893 694	1	D3-4	HOUSING-with swepline,with dual wheels &D4 ambul ance-1978-79
	4213 211	1	D3-4	HOUSING-with swepline,with dual wheels & D4 ambulance-1980-81
	4117 302	1	CB3,MB4	HOUSING-with offset diff.,except 163" W.B.,up to approx.4-14-80
	4213 207	1	CB3,MB4	HOUSING-with offset diff.,except 163" w.b.,after approx.4-14-80
	4213 207	1	CB3,MB4	HOUSING-with offset diff.,except 163" W.B.-1981
	4117 301	1	CB3-4,MB4	HOUSING-with offset diff.,with 163" W.B.-8000 lb.Axle
	3634 345	1	P3	HOUSING-1978
	3733 452	1	M3,4	HOUSING-1978-79
	4213 208	1	M3,4	HOUSING-1980
2	1799 299	1	All	CUP,drive pinion front
2	1799 297	1	All	CUP,drive pinion rear
3	1799 300	1	All	CONE,drive pinion front
	1799 298	1	All	CONE,drive pinion rear
4	1795 193	1	All	SLINGER,pinion oil seal outer
5	2961 188	1	All	SEAL,oil-use with 5380 & 7260 serier companion yoke-1978
5	4112 001	1	All	SEAL,drive pinion oil-1979-80-81
	3507 585	1	All	use w/7290 Companion Yoke
6		1	All	YOKE-refer to group 16
7		1	All	WASHER-refer to group 16
8		1	All	NUT-refer to group 16
9	2909 288	2		GASKET,drive shaft
10	3633 829	2	D3-4	SHAFT,drive-D3 except swepline,with dual wheels & D4 ambulance
	3893 673	2	D3-4	SHAFT,drive-D3 swepline with dual wheels & D4 ambulance
	3633 829	2	W3-4	SHAFT,drive-4.56 ratio
	3894 182-3	1	CB3,MB4	SHAFT,drive-with offset diff.,except 163" W.B.
	4086 620-1	1	CB3-4,MB4	SHAFT,drive-with offset diff.,with 163" W.B.
	2910 941	2	P3,M3-4	SHAFT,drive
11		2		CAP (Serviced in Item 1)
12		4		SCREW (Not Serviced)
13				GEAR & PINION-serviced in item 19

LIGHT DUTY CODES: A = All Sport Utility (Ramcharger). B = All Compact Models. D = Conventional Cab.
 AD = 2 Wheel Drive Only (Ramcharger). CB-MB = Compact Front Section Only. W = Conventional Cab 4 Wheel Drive.
 AW = 4 Wheel Drive Only (Ramcharger). P = Forward Control Chassis. M = Motor Home.

MEDIUM-HEAVY CODES: XNT = Low Cab Forward. D = Conventional Cab. S = School Bus. W = 4-Wheel Drive.

AR=Use as Required

=New Part Number

Printed in U.S.A.

June, 1982

1978-81 LIGHT DUTY TRUCK PARTS CATALOG

REAR AXLE

ITEM	PART NUMBER	QTY	MODEL	DESCRIPTION
AXLE,REAR				
Spicer-70-7200,7500,8000 lb.				
D,W3,CB,MB,P3,M3-4				
14	1795 170	12	All	SCREW,drive gear
15	2952 471	1		GASKET,carrier cover
16		1		COVER-serviced in item 20
17	4031 945	1	All	PLUG
18	2952 474	10	All	BOLT,carrier cover
19				GEAR & PINION KIT, Drive-(consists of: gear & pinion,shims,brgs.,seal,slinger & baffle
19	3828 139	1		4.10 ratio
19	3893 689	1		4.56 ratio
19	3828 137	1		4.88 ratio
19	3893 692	1	P3	5.86 Ratio-Export
20	4115 262	1		COVER KIT,differential carrier
21	1795 185	AR	All	SHIM,front bearing adjusting-.003
	1795 186	AR	All	SHIM,front bearing adjusting-.005
	1795 189	AR	All	SHIM,rear bearing adjusting-.003
	1795 190	AR	All	SHIM,rear bearing adjusting-.005
22	2952 466	1	All	BAFFLE,oil seal
23	112 210	16		STUD,drive shaft flange
24	1508 989	16		DOWEL,drive shaft flange
25	152 347	16		NUT,drive shaft flange stud
NOTE: The Following parts are not illustrated.				
	4032 798	1	All	BREATHER or VENT

LIGHT	A = All Sport Utility (Ramcharger).	B = All Compact Models.	D = Conventional Cab.
DUTY	AD = 2 Wheel Drive Only (Ramcharger).	CB-MB = Compact Front Section Only.	W = Conventional Cab 4 Wheel Drive.
CODES:	AW = 4 Wheel Drive Only (Ramcharger).	P = Forward Control Chassis.	M = Motor Home.

MEDIUM-HEAVY CODES: XNT = Low Cab Forward. D = Conventional Cab. S = School Bus. W = 4-Wheel Drive.

AR=Use as Required

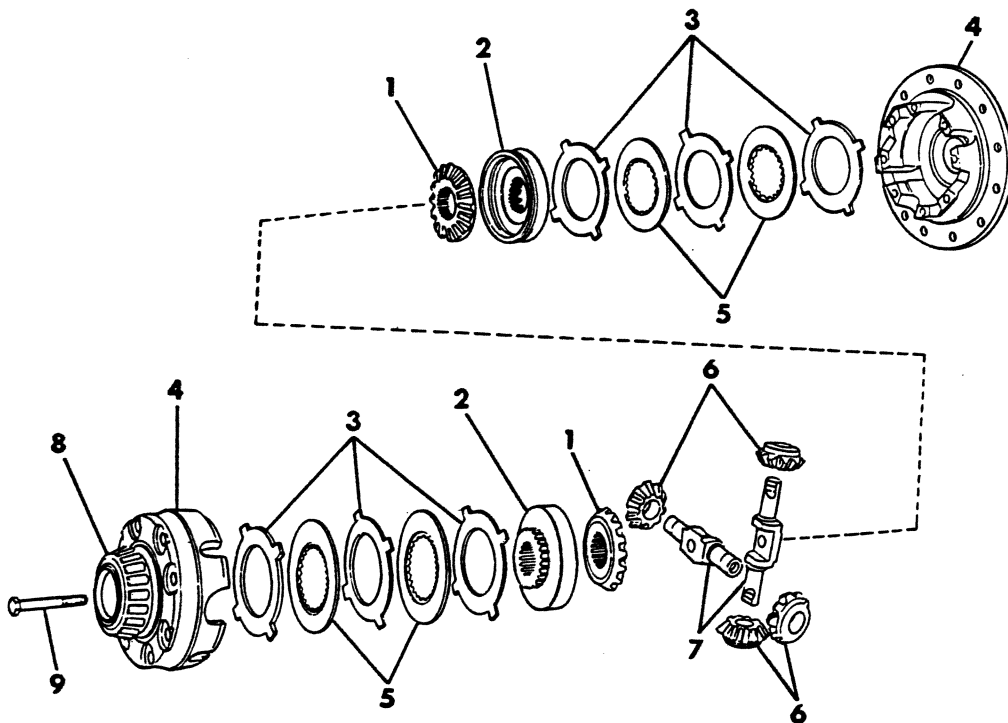
=New Part Number

Printed in U.S.A.

June, 1982

8303 1000

**DIFFERENTIAL, REAR AXLE-WITH ANTI-SPIN
SPICER 70-4 PINION-7500 LB.
D300-400, W300-400**



ITEM	PART NUMBER	QTY	MODEL	DESCRIPTION
DIFFERENTIAL,REAR AXLE-WITH ANTI-SPIN SPICER 70-4 PINION-7500 LB. D300-400,W300-400				
1	2955 837	2	All	GEAR, Diff. Side
2	2852 513	2	All	RING
3	1929 759	4	All	PLATE,friction-(flat)
3	2228 429	2	All	PLATE,friction-dished
4	3633 832	1	All	CASE-4.10 ratio
4	2953 923	1	All	CASE-4.56,4.88 ratio
5	1929 758	2	All	DISC, Friction (Flat)
5	2238 893	2	All	DISC,friction-dished
6	1929 756	4	All	PINION
7	1929 754	2	All	SHAFT
8	1799 296	2	All	CONE,differential bearing
9	2952 459	10	All	SCREW,differential case-2 1/4" long
NOTE: The Following Parts Are Not Illustrated.				
	1799 295	2	All	CUP, Diff. Brg. Cone
	1795 152	AR	All	SHIM,differential bearing-.003
	1795 153	AR	All	SHIM,diff.bearing-.005
	2852 523	1	D-W3-4	DIFFERENTIAL DISC. & PLATE KIT-(4.88 ratio only)
	4031 954	1		DIFFERENTIAL CASE ASSY.KIT-4.56,4.88 ratio
	4219 047	1		DIFFERENTIAL CASE KIT-4.56 ratio
	4115 256	1		DIFFERENTIAL CASE PARTS KIT

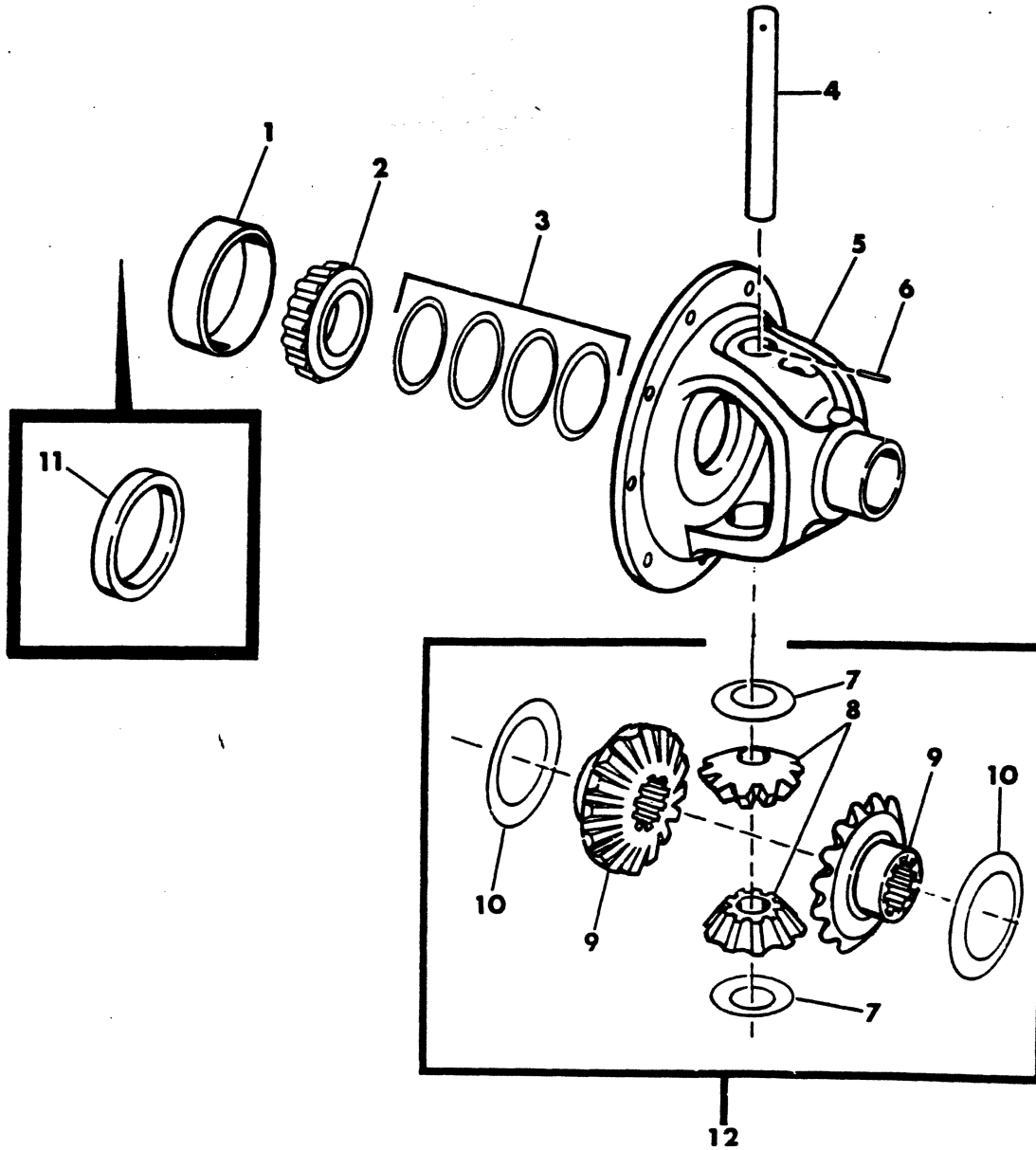
LIGHT	A = All Sport Utility (Ramcharger).	B = All Compact Models.	D = Conventional Cab.
DUTY	AD = 2 Wheel Drive Only (Ramcharger).	CB-MB = Compact Front Section Only.	W = Conventional Cab 4 Wheel Drive.
CODES:	AW = 4 Wheel Drive Only (Ramcharger).	P = Forward Control Chassis.	M = Motor Home.

MEDIUM-HEAVY CODES: XNT = Low Cab Forward. D = Conventional Cab. S = School Bus. W = 4-Wheel Drive.

AR=Use as Required # = New Part Number Printed in U.S.A. June, 1982

8303 1400A

DIFFERENTIAL, REAR AXLE-WITHOUT ANTI-SPIN
Spicer-70-2 Pinion-7200,7500,8000,10,000 lb.
P,W-D3-4,CB,MB,M3-4-5



ITEM	PART NUMBER	QTY	MODEL	DESCRIPTION
------	-------------	-----	-------	-------------

DIFFERENTIAL,REAR AXLE-WITHOUT ANTI-SPIN
Spicer-70-2 Pinion-7200,7500,8000,10,000 lb.
P,W-D3-4,CB,MB,M3-4-5

NOTE: Items 1 Thru 11 are also contained in Item 5- DIFFERENTIAL KIT

1	1799 295	2	ALL	CUP,differential bearing-except M3-4-5
1	1799 295	2	M3-4	CUP,differential bearing
1	1662 719	2	M5	CUP,differential bearing
2	1799 296	2	ALL	CONE,differential bearing-except M3-4-5
2	1799 296	2	M3-4	CONE,differential bearing
2	1799 574	2	M5	CONE,differential bearing
3	1795 152	AR	M3-4	SHIM, .003
3	1795 153	AR	M3-4	SHIM-.005
4	3823 560	1		SHAFT,diff.pinion cross
5				CASE,differential-refer to item K or L
6	3823 562	1	All	PIN, Diff.Pinion Shaft Lock
7	3823 561	2	All	WASHER,differential pinion thrust
8	3823 559	2	All	PINION,differential
9	3823 558	2	All	GEAR, Diff. Side
10	2961 848	2	All	WASHER,differential gear thrust
11				SPACER,differential bearing adjusting
	2954 969	AR	M5	.1460
	2954 970	AR	M5	.1475
	2954 971	AR	M5	.1490
	2954 971	AR	M5	.1490
	2954 973	AR	M5	.1520
	2954 974	AR	M5	.1535
	2954 975	AR	M5	.1550
	2954 976	AR	M5	.1565
	2954 977	AR	M5	.1580
	2954 978	AR	M5	.1595
	2954 979	AR	M5	.1610
	2954 980	AR	M5	.1625
	2954 981	AR	M5	.1640
	2954 982	AR	M5	.1655
	2954 983	AR	M5	.1670
	2954 984	AR	M5	.1685
	2954 985	AR	M5	.1700
	2954 986	AR	M5	.1715
	2954 987	AR	M5	.1745
	2954 988	AR	M5	.1775
	2954 989	AR	M5	.1805
12	4115 256	1		DIFFERENTIAL CASE PARTS KIT

consists of:pinions,side gear,pinion shaft,washers,gasket,drive gear bolts.

NOTE: The Following Parts Are Not Illustrated.

K

DIFFERENTIAL CASE ASSY.KIT

consists of:

LIGHT	A = All Sport Utility (Ramcharger).	B = All Compact Models.	D = Conventional Cab.
DUTY	AD = 2 Wheel Drive Only (Ramcharger).	CB-MB = Compact Front Section Only.	W = Conventional Cab 4 Wheel Drive.
CODES:	AW = 4 Wheel Drive Only (Ramcharger).	P = Forward Control Chassis.	M = Motor Home.

MEDIUM-HEAVY CODES: XNT = Low Cab Forward. D = Conventional Cab. S = School Bus. W = 4-Wheel Drive.

AR=Use as Required

= New Part Number

Printed in U.S.A.

June, 1982

1978-81 LIGHT DUTY TRUCK PARTS CATALOG

REAR AXLE

ITEM	PART NUMBER	QTY	MODEL	DESCRIPTION
------	-------------	-----	-------	-------------

DIFFERENTIAL, REAR AXLE-WITHOUT ANTI-SPIN
Spicer-70-2 Pinion-7200,7500,8000,10,000 lb.
P,W-D3-4,CB,MB,M3-4-5

				differential case assy.(complete)
				adjusting shim kit
				differential bearing
				screws
	3893 672	1	M5	4.56,4.88 ratio-10,000 lb.
	3893 672	1		4.56,4.88 ratio-7500,8000 lb.
	3893 672	1	CB4,MB4	4.56 ratio-with 163" w.b. & offset diff.
	3893 674	1	M3-4	4.56,4.88 ratio-7500,8000 lb.
	3893 690	1	P	4.10 ratio
	3893 690	1	D3-4	4.10 ratio-D3 swepline with dual wheels & D4 ambulance
	3893 690	1	CB3,MB4	4.10 ratio-127,145" w.b.
	4115 261	1	CB4,MB4	4.10 ratio-with 127,145" w. b. & offset diff.
	3893 691	1	CB3,MB4	4.56 ratio-with 127,145" w. b.
	3893 691	1	P,W3,D,M3-4	4.56,4.88,5.86 ratio

L

DIFFERENTIAL CASE KIT

consists of:

Differential Case-(only)

Adjusting Shim Kit

Shaft Lock

Screws

	4031 947	1	D3-4	4.10 ratio-D3 swepline with dual wheels & D4 ambulance
	4031 947	1	P	4.10 ratio
	4115 263	1	CB3-4,MB4	4.10 ratio,with 163" w.b.
	4031 947	1	CB3,MB4	4.10 ratio,with 127,145" w.b.
	4031 946	1		4.56,4.88 ratio
	4115 258	1	M5	4.56,4.88 ratio-10,000 lb.axle
	4115 258	1		4.56,4.88 ratio-with 7500,8000 lb. axle
	4115 258	1	CB4,MB4	4.56 ratio-with 163" w.b.-8000 lb. axle
	4219 047	1	D3-4	4.56 ratio-with limited slip
	4031 946	1	D3-4,W3-4	4.56-except limited slip

LIGHT A = All Sport Utility (Ramcharger). B = All Compact Models. D = Conventional Cab.
DUTY AD = 2 Wheel Drive Only (Ramcharger). CB-MB = Compact Front Section Only. W = Conventional Cab 4 Wheel Drive.
CODES: AW = 4 Wheel Drive Only (Ramcharger). P = Forward Control Chassis. M = Motor Home.

MEDIUM-HEAVY CODES: XNT = Low Cab Forward. D = Conventional Cab. S = School Bus. W = 4-Wheel Drive.

AR=Use as Required

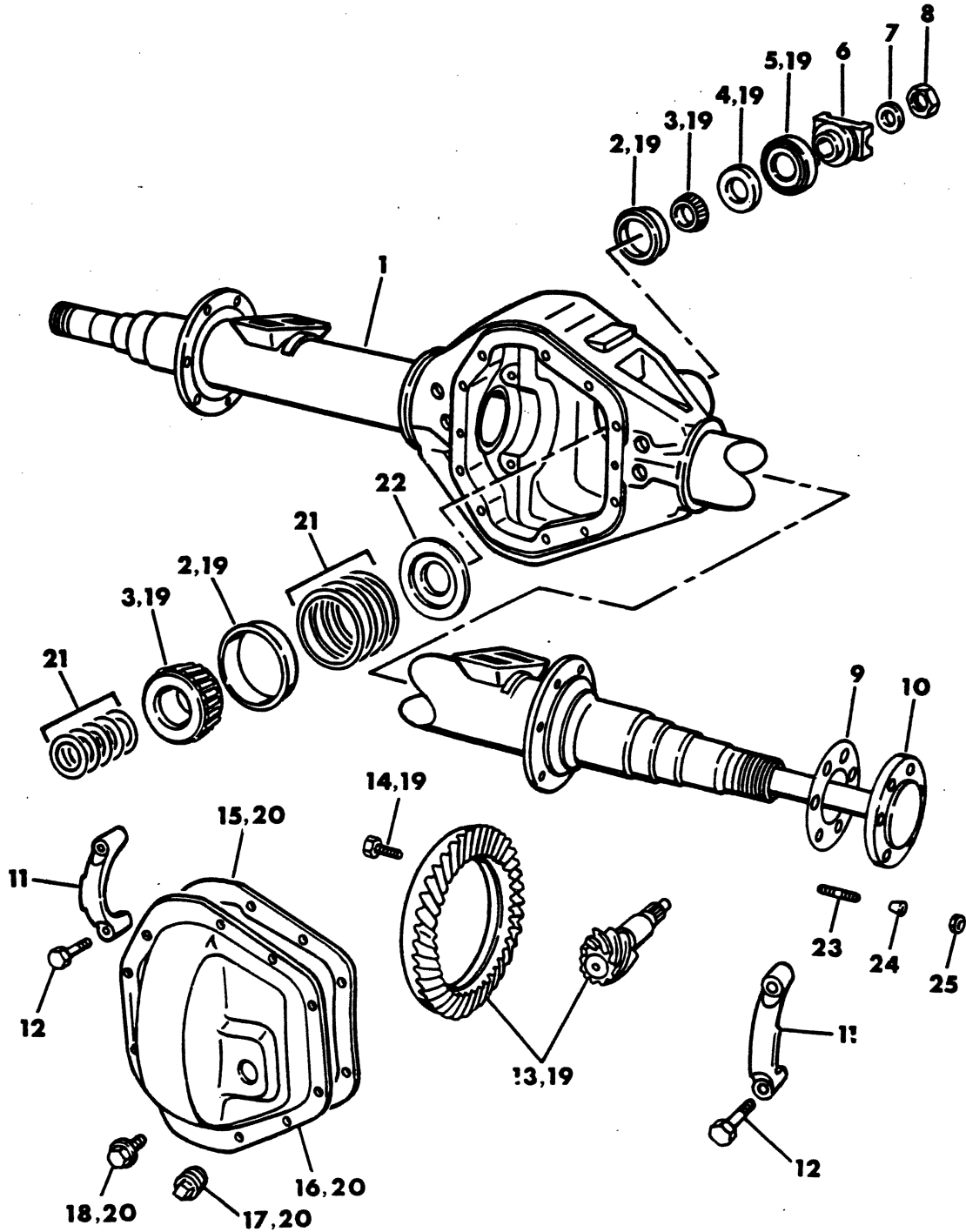
#=New Part Number

Printed in U.S.A.

June, 1982

8303 1450

AXLE, REAR
SPICER 70-10000 LB.
M5



ITEM	PART NUMBER	QTY	MODEL	DESCRIPTION
------	-------------	-----	-------	-------------

AXLE,REAR
SPICER 70-10000 LB.
M5

NOTE: Refer to description column when specifying parts.

NOTE: Four (4) pinion axles have (2) piece differential case,Two (2) pinion axles have a one piece differential case

	4031 334	1		AXLE,2 pinion,w/o brakes & drive shaft-4.56 ratio-1978-79
1	3894 907	1	All	HOUSING,axle-1978-79
1	4213 206	1	All	HOUSING,axle-1980
2	1799 299	1	All	CUP,drive pinion front
2	1799 297	1	All	CUP,drive pinion rear
3	1799 300	1	All	CONE,drive pinion front
3	1799 298	1	All	CONE,drive pinion rear
4	1795 193	1	All	SLINGER,drive pinion oil seal
5	2961 188	1	All	SEAL,drive shaft oil-1978
5	4112 001	1	All	SEAL,drive shaft oil-1979-80
6		1		YOKE-refer to group 16
7		1		WASHER-refer to group 16
8		1		NUT-refer to group 16
9	2914 498	1		GASKET,drive shaft
10	2952 475	2		SHAFT,drive
11				CAP-serviced in item 1
12				SCREW-not serviced
13				GEAR & PINION-refer to item 19
14	1795 170	12	all	SCREW,drive gear
15	2952 471	1		GASKET,carrier cover
16				COVER-serviced in item 20
17				PLUG,filler metal-not serviced
17	4031 945	1		PLUG,filler-rubber
18	2952 474	10		SCREW,cover
19				GEAR & PINION KIT,drive
				consists of gear & pinion,shims,brgs.,seal,slinger & baffle
19	4031 953	1		4.56 ratio
19	4213 223	1		4.88 ratio
20	4115 262	1		COVER KIT,differential carrier
21	1795 185	AR		SHIM,front bearing adjusting-.003
21	1795 186	AR		SHIM,front bearing adjusting-.005
21	1795 189	AR		SHIM,rear bearing adjusting-.003
21	1795 190	AR		SHIM,rear bearing adjusting-.005
22	2952 466	1		BAFFLE,oil seal
23	2952 849	12		STUD,drive shaft flange
24	1925 821	12		DOWEL,drive shaft flange
25	115 731	12		NUT,drive shaft flange stud, 1/2"-20
				NOTE: The Following Parts Are Not Illustrated.
	3735 100	1		BREATHER or VENT

LIGHT DUTY CODES: A = All Sport Utility (Ramcharger). B = All Compact Models. D = Conventional Cab.
AD = 2 Wheel Drive Only (Ramcharger). CB-MB = Compact Front Section Only. W = Conventional Cab 4 Wheel Drive.
AW = 4 Wheel Drive Only (Ramcharger). P = Forward Control Chassis. M = Motor Home.

MEDIUM-HEAVY CODES: XNT = Low Cab Forward. D = Conventional Cab. S = School Bus. W = 4-Wheel Drive.

AR=Use as Required

=New Part Number

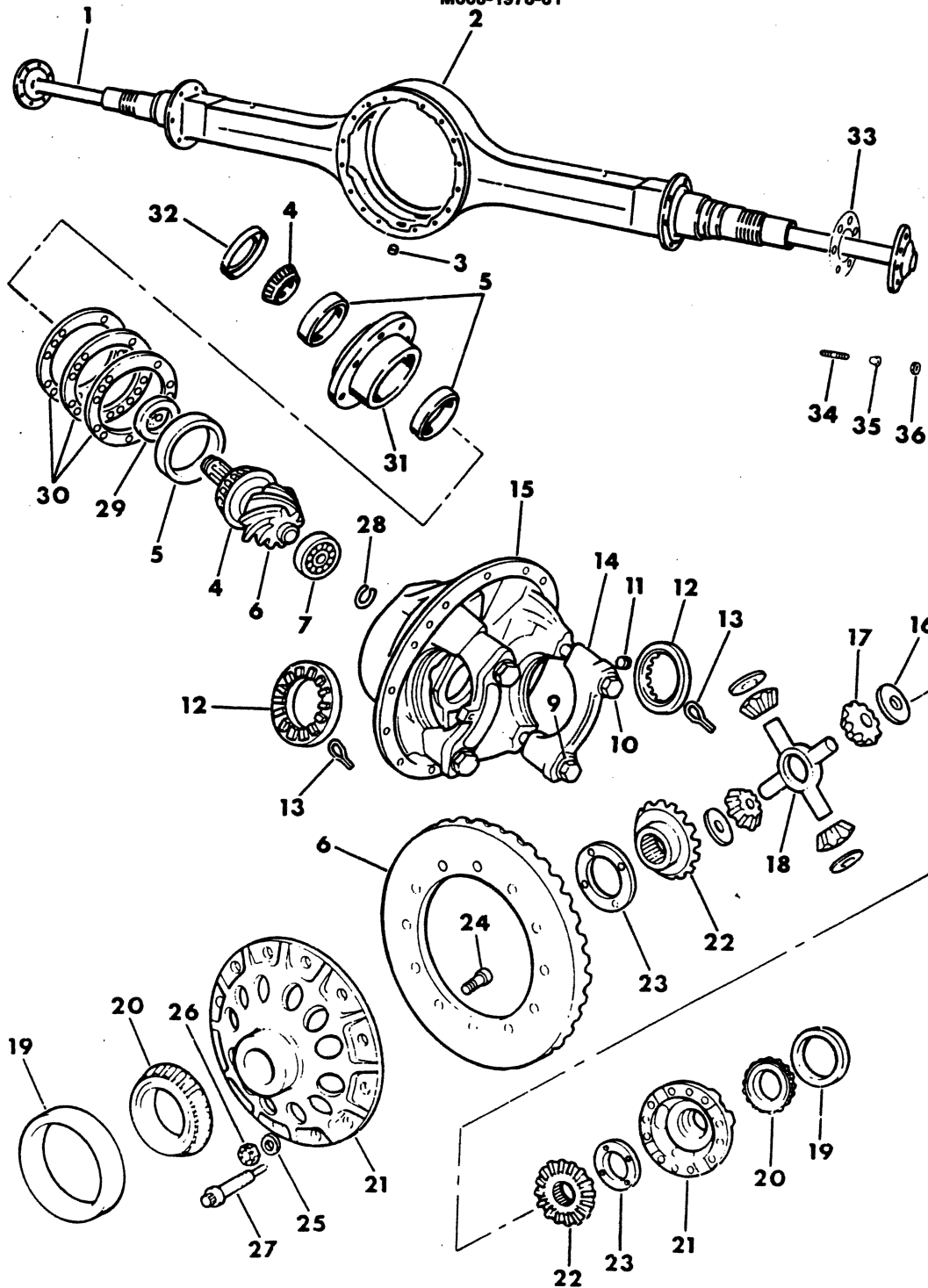
Printed in U.S.A.

June, 1982

1978-81 LIGHT DUTY TRUCK PARTS CATALOG

8303 1500A

AXLE, REAR ROCKWELL-F130N, D140-13000, 13500 CAPACITY M600-1978-81



ITEM	PART NUMBER	QTY	MODEL	DESCRIPTION
------	-------------	-----	-------	-------------

AXLE,REAR
ROCKWELL-F130N,D140-13000,13500 CAPACITY
M600-1978-81

	4086 174	1		DIFFERENTIAL and CARRIER- 4.88 Ratio-1978-79
1	2512 065	2		SHAFT
2	4031 982	1		HOUSING
3		1		PLUG, Drain (Not Serviced)
4	1667 864	1		CONE & ROLLER-outer
4	1327 846	1		CONE & ROLLER-inner
5	537 819	1		CUP,bearing cone-outer
5	1327 847	1		CUP,bearing cone-inner
6	4031 981	1		GEAR and PINION SET-4.88 Ratio
7	1667 389	1		BEARING, 1" I. D.
7	2508 986	1		BEARING-1 1/8" I.D.
9	2230 739	4		WASHER
10	3735 023	4		SCREW
11		1		PLUG, Inspection and Filler
12	1667 852	2		RING, Adj.
13	2232 800	2		LOCK, Adj. Ring
14		2		CAP (Serviced in Item 15)
15	3820 083	1		CARRIER, w/CAPS
16	1264 673	4		WASHER
17	1565 083	4		PINION
18	1505 617	1		SPIDER
19	3820 086	2		CUP,bearing
20	1789 829	2		CONE and ROLLERS
21	2955 230	1		CASE
22	4086 177	2		GEAR, Side
23	596 776	2		WASHER
24	4089 263	12		BOLT, Drive Gear
25	1799 590	12		WASHER
26	4089 264	12		NUT, Drive Gear Bolt
27	4086 176	8		SCREW, Differential Case
28	2513 519	1		RING, Lock
29				SPACER,drive pinion front Bearing
	4086 182	AR		.153
	4086 183	AR		.154
	4086 184	AR		.155
	4086 185	AR		.156
	4086 186	AR		.157
	4086 187	AR		.158
	4086 188	AR		.164
	4086 189	AR		.170
	1667 909	AR		.176
	4086 190	AR		.182
30				SHIM,drive pinion front bearing cage
	3898 410	AR		.003
	3898 411	AR		.005
	4031 990	AR		.010
31	4086 178	1		CAGE & CUP,drive pinion front bearing
32	4086 181	1		SEAL,drive pinion front bearing oil
33	565 911	2		GASKET, Drive Shaft

LIGHT	A = All Sport Utility (Ramcharger).	B = All Compact Models.	D = Conventional Cab.
DUTY	AD = 2 Wheel Drive Only (Ramcharger).	CB-MB = Compact Front Section Only.	W = Conventional Cab 4 Wheel Drive.
CODES:	AW = 4 Wheel Drive Only (Ramcharger).	P = Forward Control Chassis.	M = Motor Home.

MEDIUM-HEAVY CODES: XNT = Low Cab Forward. D = Conventional Cab. S = School Bus. W = 4-Wheel Drive.

AR=Use as Required

#=New Part Number

Printed in U.S.A.

June, 1982

1978-81 LIGHT DUTY TRUCK PARTS CATALOG

REAR AXLE

ITEM	PART NUMBER	QTY	MODEL	DESCRIPTION
------	-------------	-----	-------	-------------

AXLE,REAR
ROCKWELL-E130N,D140-13000,13500 CAPACITY
M600-1978-81

34	912 435	16		STUD, Drive Shaft
35	1508 989	1		DOWEL, Drive Shaft
36	272 235	1		NUT, Drive Shaft Flange Stud, 7/16"-20
NOTE: The Following Parts are not Illustrated.				
	4086 192	1		SLINGER, Oil , Companion Yoke
	1668 178	8		SCREW, Drive Pinion Front Brg. Cage
	1779 591	8		WASHER, Drive Pinion Front Brg. Cage Screw
	1667 309	1		GASKET, Diff. Carrier to Hsg.
	9418 505	12		SCREW,diff.carrier to housing-1/2-13 x 1 1/2" long
	9418 275	2		7/16-14 x 1-1/2" long
		2		7/16-14 x 2-1/4" long-not serviced
	2513 786	1		VENT, Housing

LIGHT	A = All Sport Utility (Ramcharger).	B = All Compact Models.	D = Conventional Cab.
DUTY	AD = 2 Wheel Drive Only (Ramcharger).	CB-MB = Compact Front Section Only.	W = Conventional Cab 4 Wheel Drive.
CODES:	AW = 4 Wheel Drive Only (Ramcharger).	P = Forward Control Chassis.	M = Motor Home.

MEDIUM-HEAVY CODES: XNT = Low Cab Forward. D = Conventional Cab. S = School Bus. W = 4-Wheel Drive.

AR=Use as Required

=New Part Number

Printed in U.S.A.

June, 1982