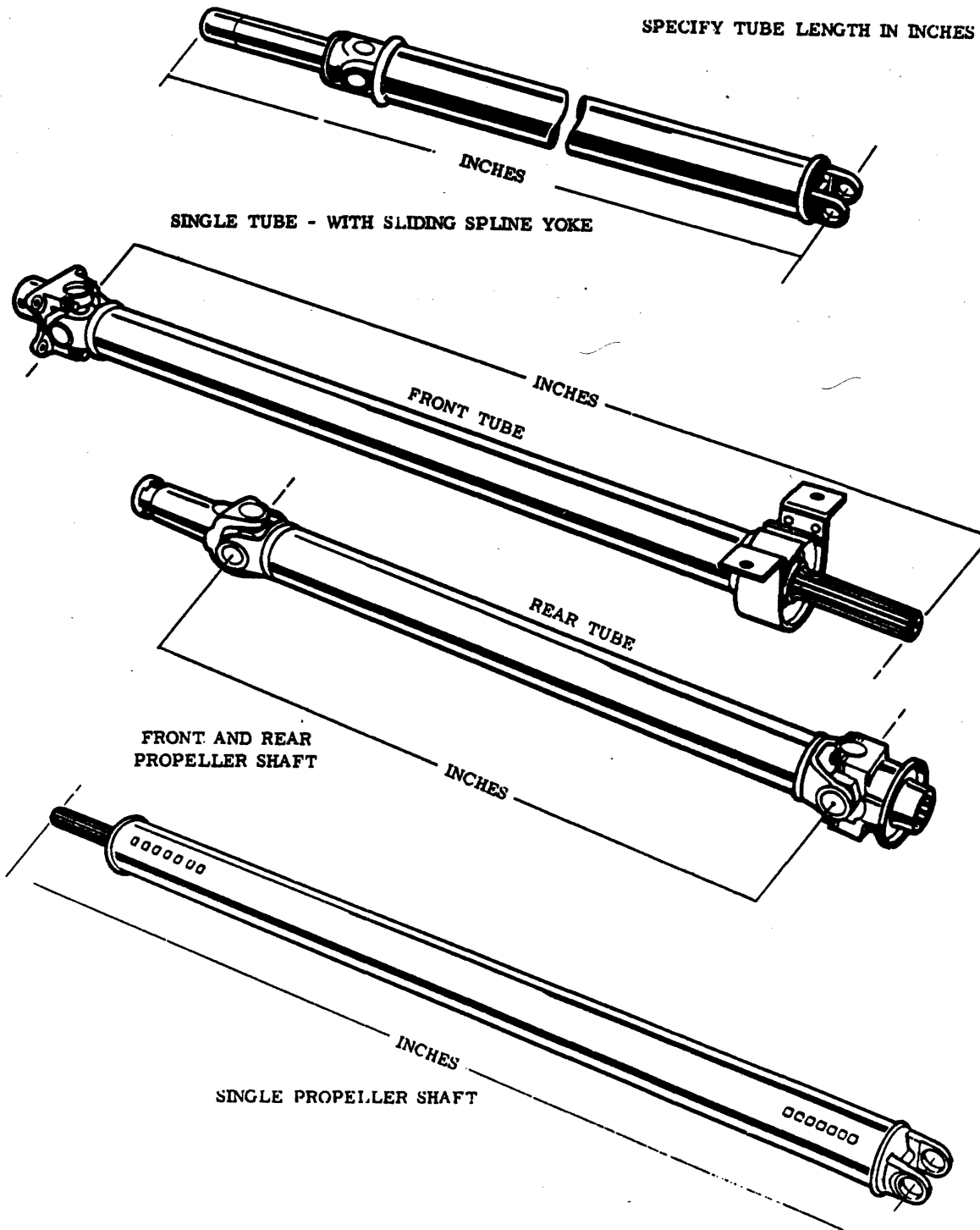


**GROUP 16 - PROP. SHAFT AND UNIVERSAL JOINT**

PROPELLER SHAFT IDENTIFICATION .....	Fig. 16-50
PROPELLER SHAFT, 2 PIECE W1,2,3,4 (w/115,131,133,135 W.B.) .....	Fig. 16-700
PROPELLER SHAFT, 2 PIECE M3,4,5 (w/137,159,178 W.B.) .....	Fig. 16-1000
PROPELLER SHAFT, 2 PIECE, CB-MB3,4 (145,163 W.B.) .....	Fig. 16-200
PROPELLER SHAFT, 2 PIECE, AW1 (Saginaw 7260 Frt. Prop. Shaft) .....	Fig. 16-400
PROPELLER SHAFT, 2 PIECE, D1,2,3,4-RD2 .....	Fig. 16-600
PROPELLER SHAFT, 3 PIECE, W1,2 (w/149" W.B.) .....	Fig. 16-800
PROPELLER SHAFT, 3 PIECE, M6 (w/208" W.B.) .....	Fig. 16-1100
PROPELLER SHAFT, SINGLE, B-CB-MB .....	Fig. 16-100
PROPELLER SHAFT, SINGLE, AD1 .....	Fig. 16-300
PROPELLER SHAFT, SINGLE, D1,2,3-RD2 .....	Fig. 16-500
PROPELLER SHAFT, SINGLE, M3 (w/104,125 W.B.) .....	Fig. 16-900
UNIVERSAL JOINT IDENTIFICATION .....	Fig. 16-1700

8316 050

PROPELLER SHAFT IDENTIFICATION



PROPELLER SHAFT CROSS REFERENCE						
NO. STAMPED	SERVICED	SERIES	TUBE	TUBE	SLIDING	
ON TUBE	PART NO.		DIAMETER	LENGTH	YOKE	
OR FLANGE						

**PROPELLER SHAFT IDENTIFICATION**

**NOTE:** This section contains a Prop Shaft Cross Reference listed numerically by prod. no. (number stamped on tube) to serv. part no. It also reflects Prop. Shaft Series, Diameter and Length for identification of tube to be replaced.

2227499	2227499	7260	2.50	34.31	2237264
2509685	3736447	7260	2.50	48.50	2237264
2832353	2832353	5380	3.00	58.00	2832393
2832363	2832363	5380	3.00	48.00	2832393
2909460	2909460	7260	2.50	33.66	2237264
2909770	2909770	7260	2.50	34.00	NONE
2914275	3496031	7260	2.50	43.10	NONE
2954959	2954959	7260	2.50	30.86	2237264
2960741	2960741	5380	3.00	28.97	NONE
2960745	2960745	5380	3.00	54.20	NONE
2996239	3578355	7260	3.25	59.60	3578223
3467595	3578357	7290	3.25	59.82	NONE
3492060	3492060	7260	4.00	64.24	
3492173	3492173	7260	3.00	49.92	3578223
3496031	3496031	7260	2.50	43.10	NONE
3496132	3496132	7260	2.50	45.72	2852323
3496134	3496134	7260	2.50	40.56	3578223
3496151	3578361	7260	2.50	41.66	3578223
3578355	3578355	7260	3.25	59.60	3578223
3578357	3578357	7290	3.25	59.82	2781932
3578361	3578361	7260	3.00	41.66	2883575
3578365	3578365	7260	3.00	45.75	2852323
3633250	3633250	7290	2.75	43.09	NONE
3633254	3633254	7290	2.75	43.09	NONE
3633256	3633256	7290	2.75	43.09	NONE
3633259	3633259	7290	2.75	30.86	2882998
3633261	3633261	7290	2.75	34.25	2882998
3633262	3633262	7290	3.25	58.10	2882998
3637129	4088965	7260	4.00	58.50	2852323
3637142	3637142	7260	4.00	61.00	3578223
3637143	3637143	7260	4.00	65.90	3578223
3637146	3637146	7260	4.00	64.64	3578223
3641597	3641597	7260	2.50	29.69	NONE
3641655	3641655	5380	3.00	29.50	NONE
3641659	3641659	5380	3.00	54.79	NONE
3641697	3641697	7260	2.50	44.62	2237264
3732226	3732226	7260	2.50	54.94	NONE
3732557	4086386	7260	3.00	50.42	2237264
3733746	3733747	5380	4.50	73.78	NONE
3733750	3733750	5380	3.00	44.25	2832393
3733845	3733845	7290	2.75	50.00	2882998
3735973	3735973	5380	4.00	63.28	2832393
3736443	3736443	7260	3.00	37.00	

**LIGHT** A = All Sport Utility (Ramcharger). B = All Compact Models. D = Conventional Cab.  
**DUTY** AD = 2 Wheel Drive Only (Ramcharger). CB-MB = Compact Front Section Only. W = Conventional Cab 4 Wheel Drive.  
**CODES:** AW = 4 Wheel Drive Only (Ramcharger). P = Forward Control Chassis. M = Motor Home.  
**MEDIUM-HEAVY CODES:** XNT = Low Cab Forward. D = Conventional Cab. S = School Bus. W = 4-Wheel Drive.  
 AR=Use as Required # =New Part Number Printed in U.S.A. June, 1982

# 1978-81 LIGHT DUTY TRUCK PARTS CATALOG

PROP. SHAFT AND  
UNIVERSAL JOINT

PROPELLER SHAFT CROSS REFERENCE						
NO. STAMPED	SERVICED	SERIES	TUBE	TUBE	SLIDING	
ON TUBE	PART NO.		DIAMETER	LENGTH	YOKE	
OR FLANGE						

## PROPELLER SHAFT IDENTIFICATION

3736447	3736447	7260	3.25	48.50	2237264
3820736	3820736	7290	2.75	48.91	2882998
3823376	3823376	7260	2.50	23.96	NONE
3823377	3823377	7260	2.50	23.96	NONE
3823410	3823411	7290	3.25	37.00	NONE
3823414	3823414	7290	3.25	47.88	2882998
3823422	4030452	7260	4.00	60.66	1739906
3823429	3823429	7290	2.75	42.00	2781932
3823437	4088966	7290	4.00	58.26	2781932
3827051	3827051	7260-7290	2.75	32.28	2237264
3827054	3827054	7260-7290	2.75	34.21	2237264
3827056	3827056	7260-7290	3.25	50.42	2237264
3827066	3827066	7260-7290	3.25	50.42	2883575
3827072	3827072	7260-7290	4.00	60.66	2237264
3827080	3827080	7260-7290	4.00	59.00	2237264
3827082	3827082	7260-7290	2.75	51.10	2237264
3827088	4030452	7260	4.00	60.86	2237264
3893429	3893429	7290	4.00	66.30	2781932
3893430	3893430	7290	4.00	64.64	2781932
3893431	3893431	7290	4.00	64.64	2882998
3898646	3898646	7260	2.00	22.54	2237264
3898647	3898647	7260	2.00	21.31	2237264
4030280	4030280	5380	3.00	45.79	NONE
4030283	4030283	5380	3.00	44.35	NONE
4030449	4030449	7260	4.00	56.96	2237264
4030452	4030452	7260	4.00	60.86	2237264
4031284	4031284	7290-5380	4.00	60.33	2781932
4031807	4031807	7290	2.75	50.07	2781932
4031810	4031810	7260-7290	2.75	33.50	2237264
4031813	4031813	7260-7290	2.75	42.50	2237264
4036403	4036403	7290	4.00	65.90	2882998
4039342	4039342	7260	3.25	58.28	2237264
4086373	4086373	7260-7290	4.00	58.40	2237264
4086386	4086386	7260	3.00	49.78	2237264
4088965	4088965	7260	4.00	58.26	3578223
4088966	4088966	7290	4.00	58.26	2781932
4089106	4089106	7260-7290	4.00	56.96	2237264
4089109	4089109	7260-7290	2.75	49.78	2237264
4089125	4089125	7260-7290	2.75	40.11	2883575
4089609	4089609	7260	2.75	42.44	2237264
4089611	4089611	7260	4.00	58.40	2237264
4089613	4089613	7260	2.75	51.02	2237264
4112203	4112203	7260	2.50	37.60	
4112204	4112204	5380	3.00	37.41	NONE
4112217	4112217	7260	2.50	32.78	2237264

**LIGHT** A = All Sport Utility (Ramcharger). B = All Compact Models. D = Conventional Cab.  
**DUTY** AD = 2 Wheel Drive Only (Ramcharger). CB-MB = Compact Front Section Only. W = Conventional Cab 4 Wheel Drive.  
**CODES:** AW = 4 Wheel Drive Only (Ramcharger). P = Forward Control Chassis. M = Motor Home.

**MEDIUM-HEAVY CODES:** XNT = Low Cab Forward. D = Conventional Cab. S = School Bus. W = 4-Wheel Drive.

AR=Use as Required

# = New Part Number

Printed in U.S.A.

June, 1982

	PROPELLER SHAFT CROSS REFERENCE					
	NO. STAMPED	SERVICED	SERIES	TUBE	TUBE	SLIDING
	ON TUBE	PART NO.		DIAMETER	LENGTH	YOKE
	OR FLANGE					

PROPELLER SHAFT IDENTIFICATION

4112220	4112220	7260	4.00	64.64	2237264
4112259	4112203	7260	2.50	37.60	NONE
4112311	4030452	7260	4.00	60.86	2237264
4112348	4112204	5380	3.00	37.41	NONE
4112990	4112990	5380	4.00	52.54	
4112991	4112991	5380	4.50	71.50	
4112942	4112942	7260	2.50	37.32	2237264
4112946	4112946	7260	2.75	46.31	2237264
4112947	4112947	7260	4.00	62.13	2237264
4112948	4112948	7260	4.00	64.14	2237264
4112954	4112954	5380	4.00	31.04	
4115476	4115476	7260	3.25	54.44	3578223
4117828	4117828	5380	4.00	52.04	
4137098	4137098	7260	2.00	24.50	2237264
4137099	4137099	7260	2.00	21.53	2237264
4164383	4164383	7260	3.00	37.00	
4164692	4164692	7260	2.00	24.50	2237264
4164693	4164693	7260	2.00	21.53	2237264
4164730	4164730	7260	2.50	27.50	NONE
4164731	4164731	7260	2.50	27.10	NONE
4167495	4167495	5380	4.50	72.00	
4167869	4167869	7260	4.00	63.64	3578220

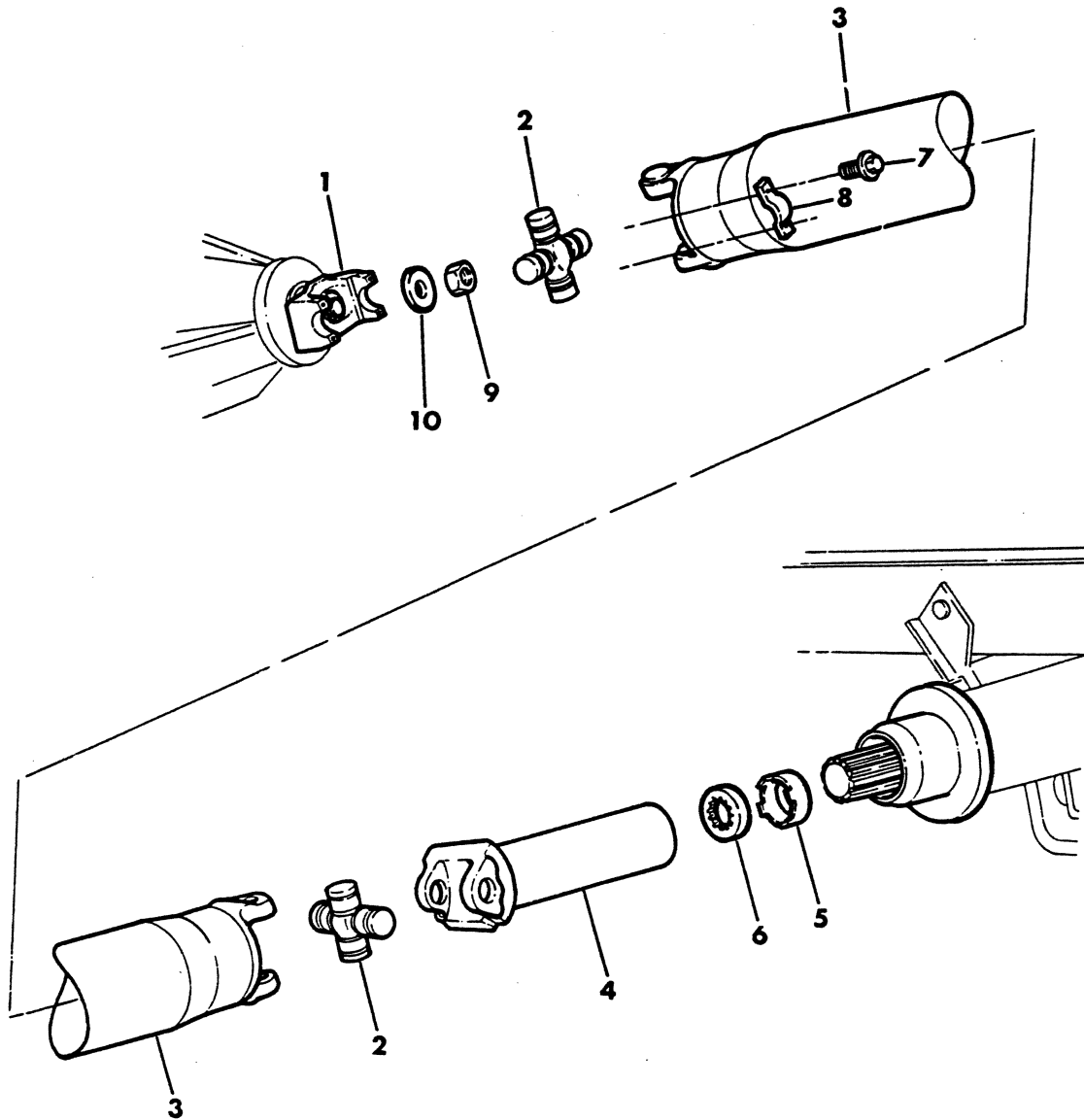
**LIGHT** A = All Sport Utility (Ramcharger). B = All Compact Models. D = Conventional Cab.  
**DUTY** AD = 2 Wheel Drive Only (Ramcharger). CB-MB = Compact Front Section Only. W = Conventional Cab 4 Wheel Drive.  
**CODES:** AW = 4 Wheel Drive Only (Ramcharger). P = Forward Control Chassis. M = Motor Home.

**MEDIUM-HEAVY CODES:** XNT = Low Cab Forward. D = Conventional Cab. S = School Bus. W = 4-Wheel Drive.

AR=Use as Required # =New Part Number Printed in U.S.A. June, 1982

## PROPELLER SHAFT, SINGLE, B-CB-MB

8316 100



ITEM	PART NUMBER	QTY	MODEL	DESCRIPTION
------	-------------	-----	-------	-------------

**PROPELLER SHAFT, SINGLE, B-CB-MB**

<b>1</b>				<b>YOKE, w/Slinger, Rear Axle</b>
	3723 251	1	B1,2	8-3/8 Rear Axle (7260), 27 Spline, 2 1/8" Span
	3432 487	1	B1,2	9-1/4 Rear Axle (7290), 29 Spline, 2 5/8" Span
	3432 485	1	B2-MB2	9-1/4 Rear Axle (7260), 29 Spline, 2 1/8" Span
	4117 781	1	B3-CB-MB3,4	Spicer 60,70 Rear Axle (7260), 29 Spline, 2 1/8" Span
	4164 120	1	MB3	Spicer 60 Rear Axle (7290), 29 Spline, 2 5/8" Span
	2952 469	1	All	SLINGER (7260-7290), w/Spicer Axle
<b>2</b>				<b>CROSS PACKAGE, Universal Joint</b>
	3004 900	AR	All	(7260), w/Grease Fitting
	3780 250	AR	All	(7260), w/o Grease Fitting
	3634 563	AR	All	(7290), w/Grease Fitting
	4057 025	AR	All	(7290), w/o Grease Fitting
	2232 011	AR	All	GREASE FITTING, U/Joint Cross, 10-32 Flush Head
<b>3</b>				<b>TUBE, Propeller Shaft</b>
	3578 361	1	B1,2-MB2	w/109 W.B., w/8-3/8 Rear Axle, (7260)
	3578 365	1	B1,2	w/109 W.B., w/A904 Trans. (7260) - 1981
	3823 429	1	B1	w/109 W.B., w/9-1/4 Rear Axle (7290)
	3496 134	1	B-CB-MB3	w/109 W.B., w/Spicer 60 Rear Axle w/o Trac Lok (7260) 1980-81
	4089 125	1	B3	w/109 W.B., w/Spicer 60 Rear Axle w/Trac Lok (7260-7290)
	3578 355	1	B1,2-MB2	w/127 W.B., w/8-3/8 Rear Axle, w/A727,A833 Trans. (7260)
	3578 357	1	B1,2	w/127 W.B., w/9-1/4 Rear Axle (7290)
	4167 869	1	B1,2	w/127 W.B., w/8-3/8, 9-1/4 Rear Axle, w/A904,A999 Trans. (7260) - 1981
	4088 965	1	B-CB-MB3	w/127 W.B., w/Spicer 60 Rear Axle, Except 440 Eng.(7260)
	4088 966	1	B-CB-MB3,4	w/127 W.B., w/Spicer 60,60 H. D.,70 Rear Axle (7290)
<b>4</b>				<b>YOKE, Sliding</b>
	2883 575	1	All	(7260-7290) 29 Spline - 1978-79
	2781 932	1	All	(7290) 29 Spline - 1978-79
	2852 323	1	B1,2	(7260) 25 Spline - 1978-79
	3578 223	1	ALL	(7260) w/A727, A833 Trans., 29 Spl. - 1980-81
	2852 323	1	B1,2	(7260) w/A904 Trans., w/109" W.B., 25 Spl. - 1981
	3578 220	1	B1,2	(7260) w/A904 Trans., w/127" W.B., 25 Spl. - 1981
	2883 575	1	B-CB-MB3	w/3637129, 4089125, 29 Spline - 1978-79
	2781 932	1	B-CB-MB3,4	(7290) w/4088966, 29 Spline
<b>5</b>				<b>CAP, Yoke Oil Seal</b>
	4117 049	1	All	(7260)
	2832 395	1	All	(7290), Up To 11-15-1978
	4117 050	1	All	After 11-15-1978
<b>6</b>				<b>SEAL, Yoke Oil</b>
	599 258	1	All	(7260), Up To 11-15-1978
	4117 049	1	All	After 11-15-1978
	563 099	1	All	(7290), Up To 11-15-1978
	4117 050	1	All	After 11-15-1978
<b>7</b>	6029 562	4	All	SCREW, Clamp Attaching
<b>8</b>				<b>CLAMP, U/Joint Cross Yoke</b>
	1828 824	2	All	(7260)
	2781 904	2	All	(7290)
<b>9</b>				<b>NUT, Rear Axle Yoke</b>
	6028 041	1	All	w/8-3/8,9-1/4 Rear Axle

**LIGHT** A = All Sport Utility (Ramcharger). B = All Compact Models. D = Conventional Cab.  
**DUTY** AD = 2 Wheel Drive Only (Ramcharger). CB-MB = Compact Front Section Only. W = Conventional Cab 4 Wheel Drive.  
**CODES:** AW = 4 Wheel Drive Only (Ramcharger). P = Forward Control Chassis. M = Motor Home.

**MEDIUM-HEAVY CODES:** XNT = Low Cab Forward. D = Conventional Cab. S = School Bus. W = 4-Wheel Drive.

AR=Use as Required

# =New Part Number

Printed in U.S.A.

June, 1982

# 1978-81 LIGHT DUTY TRUCK PARTS CATALOG

ITEM	PART NUMBER	QTY	MODEL	DESCRIPTION
------	-------------	-----	-------	-------------

## PROPELLER SHAFT, SINGLE, B-CB-MB

10	1795 173	1	All	w/Spicer Rear Axle
	2070 117	1	All	WASHER, Rear Axle Yoke w/8-3/8,9-1/4 Rear Axle
	1795 175	1	All	w/Spicer Rear Axle

**LIGHT DUTY CODES:**  
 A = All Sport Utility (Ramcharger).      B = All Compact Models.      D = Conventional Cab.  
 AD = 2 Wheel Drive Only (Ramcharger).      CB-MB = Compact Front Section Only.      W = Conventional Cab 4 Wheel Drive.  
 CODES:      AW = 4 Wheel Drive Only (Ramcharger).      P = Forward Control Chassis.      M = Motor Home.

---

**MEDIUM-HEAVY CODES:**      XNT = Low Cab Forward.      D = Conventional Cab.      S = School Bus.      W = 4-Wheel Drive.

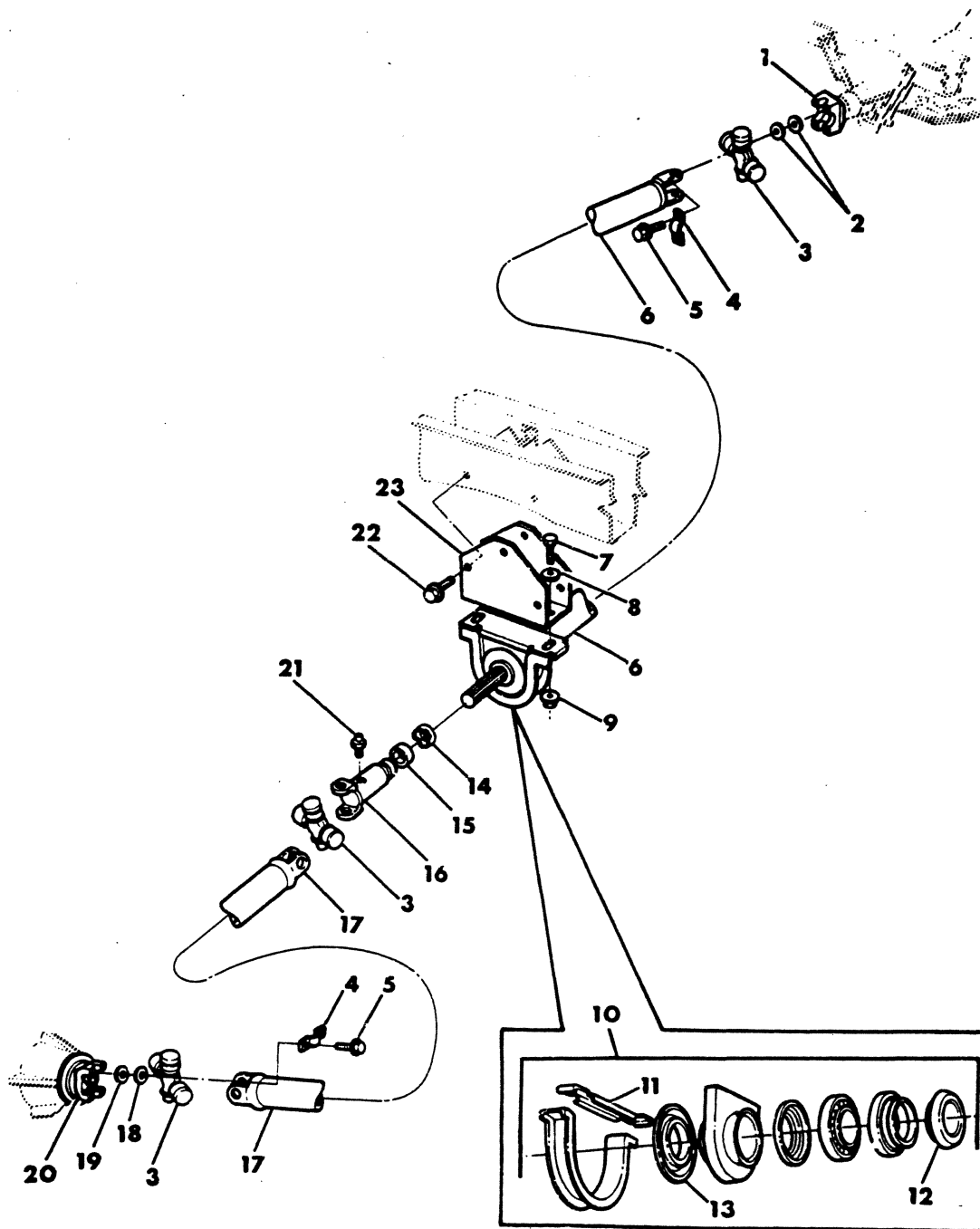
AR=Use as Required      # =New Part Number      Printed in U.S.A.      June, 1982





## PROPELLER SHAFT, 2 PIECE, CB-MB3,4 (145,163 W.B.)

8316 200



ITEM	PART NUMBER	QTY	MODEL	DESCRIPTION
<b>PROPELLER SHAFT, 2 PIECE, CB-MB3,4 (145,163 W.B.)</b>				
1				YOKE, Trans. Output Shaft
	2508 238	1	CB3-MB4	(7260) 23 Spline, 145" W.B. - 1980
	2882 996	1		(7290) 23 Spline
2	2298 967	1	All	NUT and WASHER PACKAGE, TRANS. Output Shaft
3				CROSS PACKAGE, Universal Joint
	3004 900	AR	All	(7260) w/Grease Fitting
	3780 250	AR	All	(7260) w/o Grease Fitting
	3634 563	AR	All	(7290) w/Grease Fitting
	4057 025	AR	All	(7290) w/o Grease Fitting
4	2781 904	4	All	CLAMP, U/Joint Cross Yoke (7290)
	1828 824	4	All	(7260)
5	6029 562	8	All	SCREW, Clamp Attaching
6	3823 410	1	All	TUBE ONLY, Front Propeller Shaft (7290)
	3823 411	1	All	TUBE ASSY., w/Center Bearing (7290)
	4164 383	1	CB3-MB4	TUBE ASSY., w/Center Bearing 145"W.B. (7260)- 1980
7		2	All	BOLT, 7/16-14 x 1 (Not Serviced)
8		2	All	WASHER, Plain 7/16 (Not Serviced)
9		2	All	NUT, 7/16-14 (Not Serviced)
10	3621 457	1	All	CENTER BEARING PACKAGE, w/Support and Insulator
	3632 991	1	All	BEARING w/GREASE RETAINER, Center P/Shaft
11	3632 995	1	All	RETAINER, Center Bearing Insulator
12	3632 997	1	All	RETAINER, Center Bearing
13	3632 996	2	All	SLINGER, Center Bearing
14	2832 395	1	All	CAP, Yoke Oil Seal, Up To 11-15-1978
	4117 050	1	All	After 11-15-1978
15	563 099	1	All	SEAL, Oil, Up to 11-15-1978
	4117 050	1	All	After 11-15-1978
16	2882 998	1	All	YOKE, Sliding, 16 Spline (7290)
	2237 264	1	CB3-MB4	w/16 Spline, 145" W.B. (7260) - 1980
17				TUBE, Rear Propeller Shaft
	3823 414	1	CB-MB3,4	w/145" W.B. (7290)
	4036 403	1	CB-MB3,4	w/163" W.B. (7290)
	3736 447	1	CB3-MB4	w/145" W.B. (7260) - 1980
18	1795 173	1	All	NUT, Rear Axle Yoke
19	1795 175	1	All	WASHER, Rear Axle Yoke
20	4164 120	1	All	YOKE, w/Slinger, Rear Axle, (7290), 29 Spline, 2 5/8" Span
	4117 781	1	All	(7260), 29 Spline, 2 1/8" Span
	2952 469	1	All	SLINGER (7260-7290), w/Spicer Axle
21	9411 022	AR	All	NIPPLE, Grease 1/8-Pipe
	9411 244	AR	All	1/4-28
23	4036 406	1	All	BRACKET, Center Bearing Mounting

**LIGHT** A = All Sport Utility (Ramcharger). B = All Compact Models. D = Conventional Cab.  
**DUTY** AD = 2 Wheel Drive Only (Ramcharger). CB-MB = Compact Front Section Only. W = Conventional Cab 4 Wheel Drive.  
**CODES:** AW = 4 Wheel Drive Only (Ramcharger). P = Forward Control Chassis. M = Motor Home.

**MEDIUM-HEAVY CODES:** XNT = Low Cab Forward. D = Conventional Cab. S = School Bus. W = 4-Wheel Drive.

AR=Use as Required

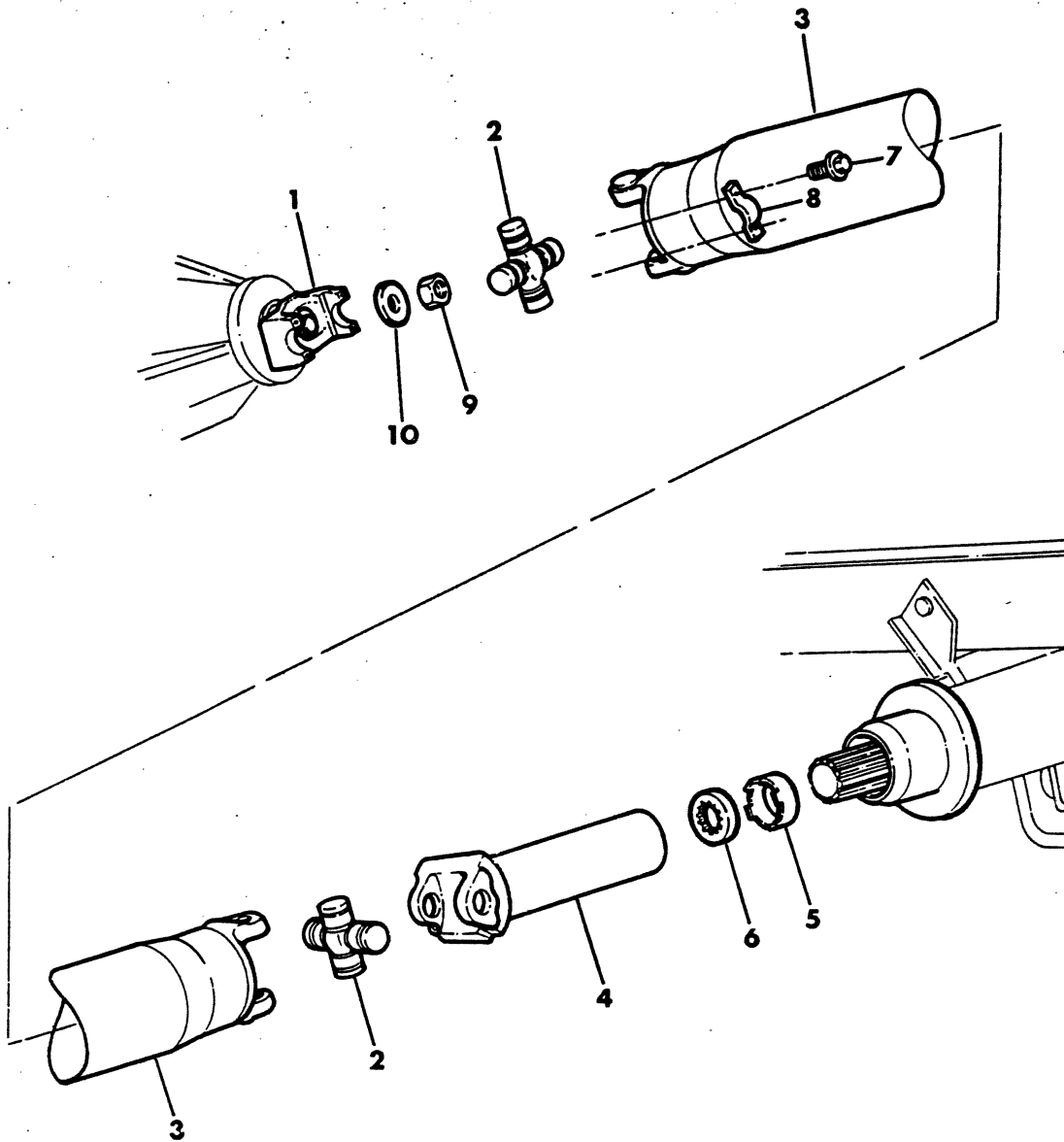
# =New Part Number

Printed in U.S.A.

June, 1982

## PROPELLER SHAFT, SINGLE, AD1

8316 300



ITEM	PART NUMBER	QTY	MODEL	DESCRIPTION
<b>PROPELLER SHAFT, SINGLE, AD1</b>				
1	3723 251	1	All	YOKE, w/Slinger, Rear Axle, (7260), 27 Spline, 2 1/8" Span, 8 3/8 Axle
	3432 485	1	All	(7260), Flange, 29 Spline, 2 1/8" Span, 9-1/4 Axle
	3432 487	1	All	(7290), 29 Spline, 2 5/8" Span, 9-1/4 Axle
2	CROSS PACKAGE, Universal Joint			
	3004 900	1	All	7260 w/Grease Fitting
	3780 250	1	All	7260 w/o Grease Fitting
	3634 563	1	All	7290 w/Grease Fitting
3	4057 025	1	All	7290 w/o Grease Fitting
	TUBE, Propeller Shaft			
4	3823 429	1	All	w/9-1/4 Rear Axle (7290-7260)
	3578 361	1	All	w/8-3/8 Rear Axle, (7260)
5	2781 932	1	All	YOKE, Sliding (7290) 29 Spline
	3578 223	1	All	(7260) 29 Spline
6	4117 049	1	All	CAP, Yoke Oil Seal
7	599 258	1	All	SEAL, Cap Oil, Up To 11-15-1978
	4117 049	1	All	After 11-15-1978
8	6029 562	4	All	SCREW, Clamp Attaching
9	2781 904	2	All	CLAMP, U/Joint Cross Yoke (7290)
	1828 824	2	All	(7260)
10	6028 041	1	All	NUT, Rear Axle Yoke
	2070 117	1	All	WASHER, Rear Axle Yoke

**LIGHT** A = All Sport Utility (Ramcharger). B = All Compact Models. D = Conventional Cab.  
**DUTY** AD = 2 Wheel Drive Only (Ramcharger). CB-MB = Compact Front Section Only. W = Conventional Cab 4 Wheel Drive.  
**CODES:** AW = 4 Wheel Drive Only (Ramcharger). P = Forward Control Chassis. M = Motor Home.

**MEDIUM-HEAVY CODES:** XNT = Low Cab Forward. D = Conventional Cab. S = School Bus. W = 4-Wheel Drive.

AR=Use as Required

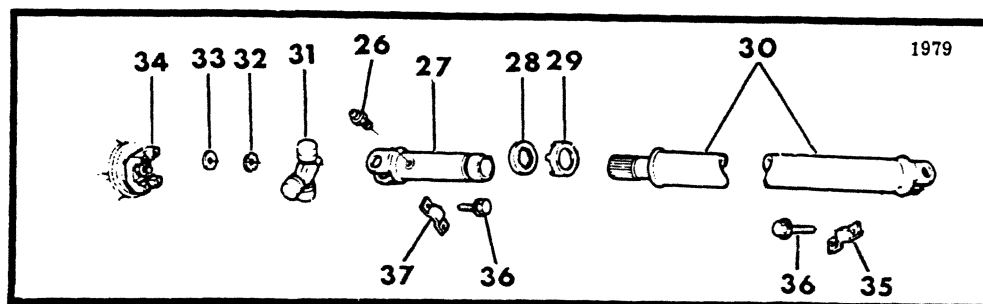
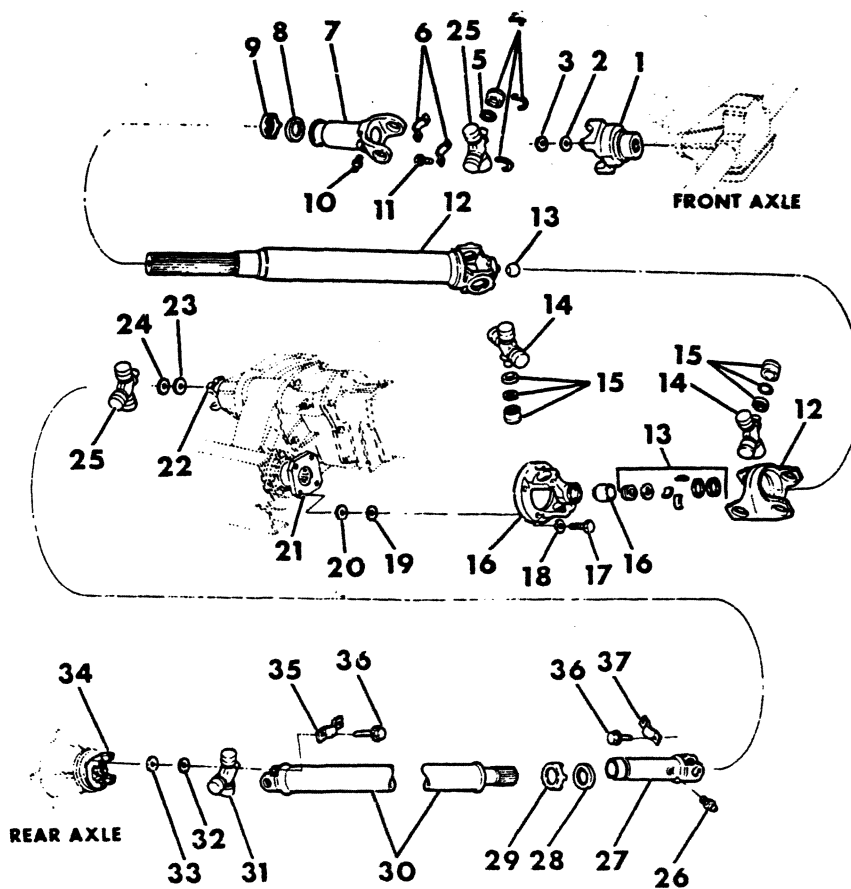
# =New Part Number

Printed in U.S.A.

June, 1982

8316 400A

## PROPELLER SHAFT, 2 PIECE, AW1 (Saginaw 7260 Frt. Prop. Shaft)



ITEM	PART NUMBER	QTY	MODEL	DESCRIPTION
<b>PROPELLER SHAFT, 2 PIECE, AW1 (Saginaw 7260 Frt. Prop. Shaft)</b>				
1	2952 894	1	All	YOKE & SLINGER, w/3500 Lb. Front Axle, 26 Spline
	1791 574	1	All	SLINGER, Yoke
2	1791 576	1	All	WASHER, Front Axle Yoke
3	1791 575	1	All	NUT, Front Axle Yoke
4				BUSHING, w/ROLLER (Serv. in Cross Pkg.)
	3004 900	1	All	w/Grease Fitting Hole
	3780 250	1	All	w/o Grease Fitting Hole
5	857 999	4	All	SEAL, Cross Bushing Dust
6	1828 824	2	All	CLAMP, U/Joint Cross Yoke (7260)
7	2237 264	1	All	YOKE, Sliding (7260) 16 Spline
8	599 258	1	All	SEAL, Yoke Oil, Up To 11-15-1978
	4117 049	1	All	After 11-15-1978
9	4117 049	1	All	CAP, Yoke Oil Seal
10	9411 022	1	All	NIPPLE, Grease 1/8" Pipe
11	6029 562	4	All	SCREW, Clamp Attaching
12	3898 646	1	All	TUBE, Propeller Shaft, w/3500 Lb. Frt. Axle, w/203 T/Case
	4164 692	1	All	w/3500 Lb. Frt. Axle, w/208 T/Case, UP TO 10-1-1980
	4137 098	1	All	AFTER 10-1-1980
13	4049 697	1	All	KIT, Center Ball
14	4030 848	2	All	CROSS PACKAGE
15	4030 850	4	All	BUSHING PACKAGE
16	4031 001	1	All	FLANGE
17	9417 471	4	All	BOLT
18	131 100	4	All	LOCKWASHER
19	3894 494	1	All	NUT, T/Case Frt. Yoke or Flange, w/203 T/Case
	4167 924	1	All	w/208 T/Case
20				WASHER, T/Case Frt. Yoke or Flange
	2070 117	1	All	Steel
	3822 840	1	All	Rubber
21	3898 688	1	All	YOKE, Transfer Case Front Output Shaft, w/203 T/Case
	4167 912	1	All	FLANGE, Transfer Case Front Output Shaft, w/208 T/Case
	4210 611	1	All	SLINGER, Front Output Shaft Flange, w/208 T/Case
22	2909 667	1	All	YOKE, Transfer Case Rear Output Shaft, w/203 T/Case
	3516 495	1	All	YOKE, Transfer Case Rear Output Shaft, w/208 T/Case
23				WASHER, T/Case Rear Output Shaft
	578 994	1	All	Steel
	3822 839	1	All	Rubber
24	2954 140	1	All	NUT, T/Case RR. Yoke, w/203 T/Case
	4167 924	1	All	w/208 T/Case
25				CROSS PACKAGE, Universal Joint (7260)
	3004 900	2	All	w/Grease Fitting
	3780 250	2	All	w/o Grease Fitting
26	9411 022	1	All	NIPPLE, Grease
27	2237 264	1	All	YOKE, Sliding, 16 Spline
28	599 258	1	All	SEAL, Yoke Oil, Up To 11-15-1978
	4117 049	1	All	After 11-15-1978
29	4117 049	1	All	CAP, Oil Seal
30				TUBE, Propeller Shaft
	2909 460	1	All	w/8-3/8 Rear Axle (7260-7260)

**LIGHT** A = All Sport Utility (Ramcharger).

B = All Compact Models.

D = Conventional Cab.

**DUTY** AD = 2 Wheel Drive Only (Ramcharger).

CB-MB = Compact Front Section Only.

W = Conventional Cab 4 Wheel Drive.

**CODES:** AW = 4 Wheel Drive Only (Ramcharger).

P = Forward Control Chassis.

M = Motor Home.

**MEDIUM-HEAVY CODES:** XNT = Low Cab Forward. D = Conventional Cab. S = School Bus. W = 4-Wheel Drive.

AR=Use as Required

# = New Part Number

Printed in U.S.A.

June, 1982

# 1978-81 LIGHT DUTY TRUCK PARTS CATALOG

ITEM	PART NUMBER	QTY	MODEL	DESCRIPTION
<b>PROPELLER SHAFT, 2 PIECE, AW1 (Saginaw 7260 Frt. Prop. Shaft)</b>				
	4031 810	1	All	w/9-1/4 Rear Axle (7260-7290)
	4112 942	1	All	w/9-1/4 Rear Axle (7260) - 1980-81
31				CROSS PACKAGE, Universal Joint (7290)
	3634 563	1	All	w/Grease Fitting
	4057 025	1	All	w/o Grease Fitting
32	6028 041	1	All	NUT, Rear Axle Yoke
33	2070 117	1	All	WASHER, Rear Axle Yoke
34				YOKE, w/Slinger, Rear Axle
	3723 251	1	All	(7260), 27 Spline, 2 1/8" Span, 8-3/8 Axle
	3432 485	1	All	(7260), Flange 29 Spline, 2 1/8" Span, 9-1/4 Axle
	3432 487	1	All	(7290), 29 Spline, 2 5/8" Span
35	2781 904	2	All	CLAMP, U/Joint Cross Yoke (7290)
36	6029 562	8	All	SCREW, Clamp Attaching
37	1828 824	2	All	CLAMP, Cross Yoke (7260)

**LIGHT** A = All Sport Utility (Ramcharger). B = All Compact Models. D = Conventional Cab.  
**DUTY** AD = 2 Wheel Drive Only (Ramcharger). CB-MB = Compact Front Section Only. W = Conventional Cab 4 Wheel Drive.  
**CODES:** AW = 4 Wheel Drive Only (Ramcharger). P = Forward Control Chassis. M = Motor Home.

**MEDIUM-HEAVY CODES:** XNT = Low Cab Forward. D = Conventional Cab. S = School Bus. W = 4-Wheel Drive.

AR=Use as Required

# = New Part Number

Printed in U.S.A.

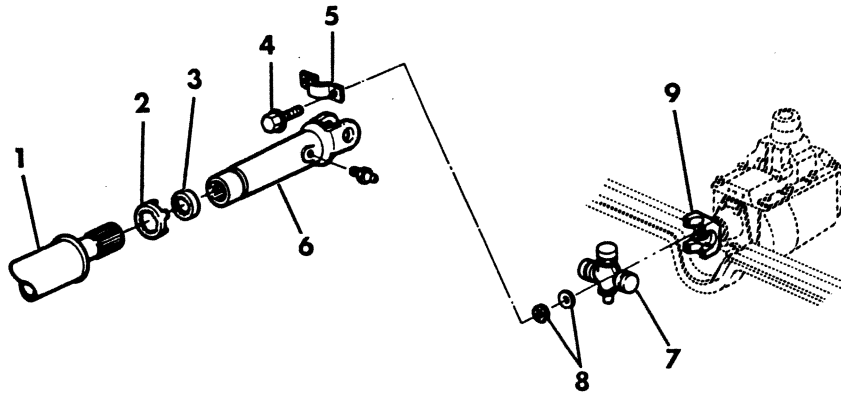
June, 1982



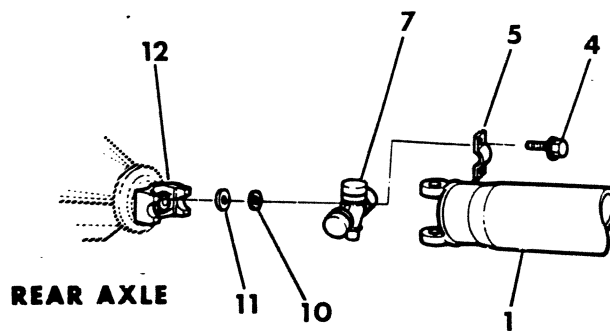
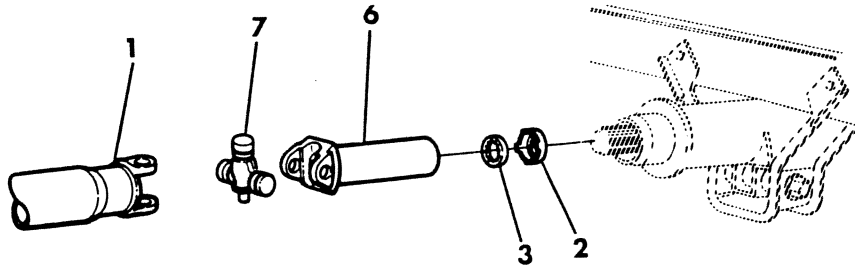


## PROPELLER SHAFT, SINGLE, D1,2,3-RD2

8316 500



**D1 With 115 W.B., With 435 & 445 TRANS.**



ITEM	PART NUMBER	QTY	MODEL	DESCRIPTION
<b>PROPELLER SHAFT, SINGLE, D1,2,3-RD2</b>				
1				<b>TUBE, PROPELLER SHAFT</b>
	3492 173	1	D1, 115 W.B.	w/230,390,727,833 Trans., 8 3/8 Rear Axle, 225,318,360,400,MMC Diesel (7260)
	4115 476	1	D1, 115 W.B.	w/A904,A999 Trans., 8-3/8 Rear Axle (7260) - 1981
	3823 422	1	D1, 115 W.B.	w/435,445 Trans., 8-3/8 Rear Axle (7260)
	4030 452	1	D1, 115 W.B.	w/435,445 Trans., (7260) - 1979-80-81
	4031 807	1	D1, 115 W.B.	w/727 Trans., All Rear Axle, 440 Eng. (7290)
	3827 066	1	D1, 115 W.B.	w/230,390,727,833 Trans., 9-1/4 Rear Axle, 225,318,360,400,MMC Diesel Eng. (7260-7290)
	3827 072	1	D1, 115 W.B.	w/435,445,Trans., 9-1/4 Rear Axle 225,318,360 Eng.(7260-7290)
	3637 143	1	D1, 131 W.B.	w/230,390,727, 833 Trans., 8-3/8 Rear Axle 225,318,360,400 Eng. (7260)
	3893 429	1	D1, 131 W.B.	w/727 Trans., All Rear Axle, 440 Eng. (7290-7290)
	3893 429	1	D1, 131 W.B.	w/230,390,727,833 Trans., 9-1/4 Rear Axle, 225,318360,400,MMC Diesel Eng. (7290-7290)
	3637 146	1	D2-RD2, 131	w/230,390,727 Trans., Spicer 60-5500lb. Rear Axle,225,318,360,400,MMC Diesel Eng. (7260)
	3893 430	1	D2, 131 W.B.	w/727 Trans., Spicer 60-5500,6200lb. Rear Axle (7290)
	3637 146	1	D3, 131 W.B.	w/727 Trans., 225,318,360 Eng. (7260)
	3893 430	1	D3, 131 W.B.	w/727 Trans., Spicer 60 Rear Axle, 400,440 Eng. (7290)
2				<b>CAP, Yoke Oil Seal</b>
	4117 049	1	All	(7260)
	2832 395	1	All	(7290), Up To 11-15-1978
	4117 050	1	All	(7290), After 11-15-1978
3				<b>SEAL, Yoke Oil</b>
	599 258	1	All	(7260), Up to 11-15-1978
	4117 049	1	All	(7260), After 11-15-1978
	563 099	1	All	(7290), Up To 11-15-1978
	4117 050	1	All	After 11-15-1978
4	6029 562	4	All	<b>SCREW, Clamp Attaching</b>
5				<b>CLAMP, Cross Yoke</b>
	1828 824	2	All	(7260)
	2781 904	2	All	(7290)
6				<b>YOKE, Sliding</b>
	2883 575	1	All	(7260-7290) 29 Spline
	2237 264	1	All	(7260) w/435,445 Trans., 16 Spline
	2781 932	1	All	(7290) 29 Spline
	3578 223	1	All	(7260) w/A727,A833 Trans., 29 Spl. - 1980-81
	3578 220	1	All	(7260) w/A904,A999 Trans., 25 Spl. - 1981
7				<b>CROSS PACKAGE, Universal Joint</b>
	3004 900	AR	All	(7260), w/Grease Fitting
	3780 250	AR	All	(7260), w/o Grease Fitting
	3634 563	AR	All	(7290), w/Grease Fitting
	4057 025	AR	All	(7290), w/o Grease Fitting
	2232 011	AR	All	GREASE FITTING, U/Joint Cross 10-32 Flush Head
8	2298 967	1	D1	<b>NUT and WASHER PACKAGE, Trans. Output Shaft, w/435,445 Trans.</b>
9	2508 238	1	D1	<b>YOKE, Trans. Output Shaft, w/435,445 Trans., 23 Spl.</b>
10				<b>NUT, Rear Axle Yoke</b>
	6028 041	1	All	(7260)

**LIGHT** A = All Sport Utility (Ramcharger). B = All Compact Models. D = Conventional Cab.  
**DUTY** AD = 2 Wheel Drive Only (Ramcharger). CB-MB = Compact Front Section Only. W = Conventional Cab 4 Wheel Drive.  
**CODES:** AW = 4 Wheel Drive Only (Ramcharger). P = Forward Control Chassis. M = Motor Home.

**MEDIUM-HEAVY CODES:** XNT = Low Cab Forward. D = Conventional Cab. S = School Bus. W = 4-Wheel Drive.

AR=Use as Required

# =New Part Number

Printed in U.S.A.

June, 1982

# 1978-81 LIGHT DUTY TRUCK PARTS CATALOG

ITEM	PART NUMBER	QTY	MODEL	DESCRIPTION
<b>PROPELLER SHAFT, SINGLE, D1,2,3-RD2</b>				
11	1795 173	1	All	(7290)
				WASHER, Rear Axle Yoke
12	2070 117	1	All	(7260)
	1795 175	1	All	(7290)
				YOKE, w/Slinger, Rear Axle
	3723 251	1	D1	(7260), 27 Spline, 2 1/8" Span, 8-3/8 Axle
	3432 487	1	D1,2	(7290), 29 Spline, 2 5/8" Span, 9-1/4 Axle
	3432 485	1	D1,2	(7260), Flange, 29 Spline, 2 1/8" Span, 9-1/4 Axle - 1979-80-81
	4117 781	1	D2,3-RD2	w/Spicer 60 H.D., 6200 lb., (7260), 29 Spline, 2 1/8" Span
	2952 469	1	All	SLINGER (7260-7290), w/Spicer Axle

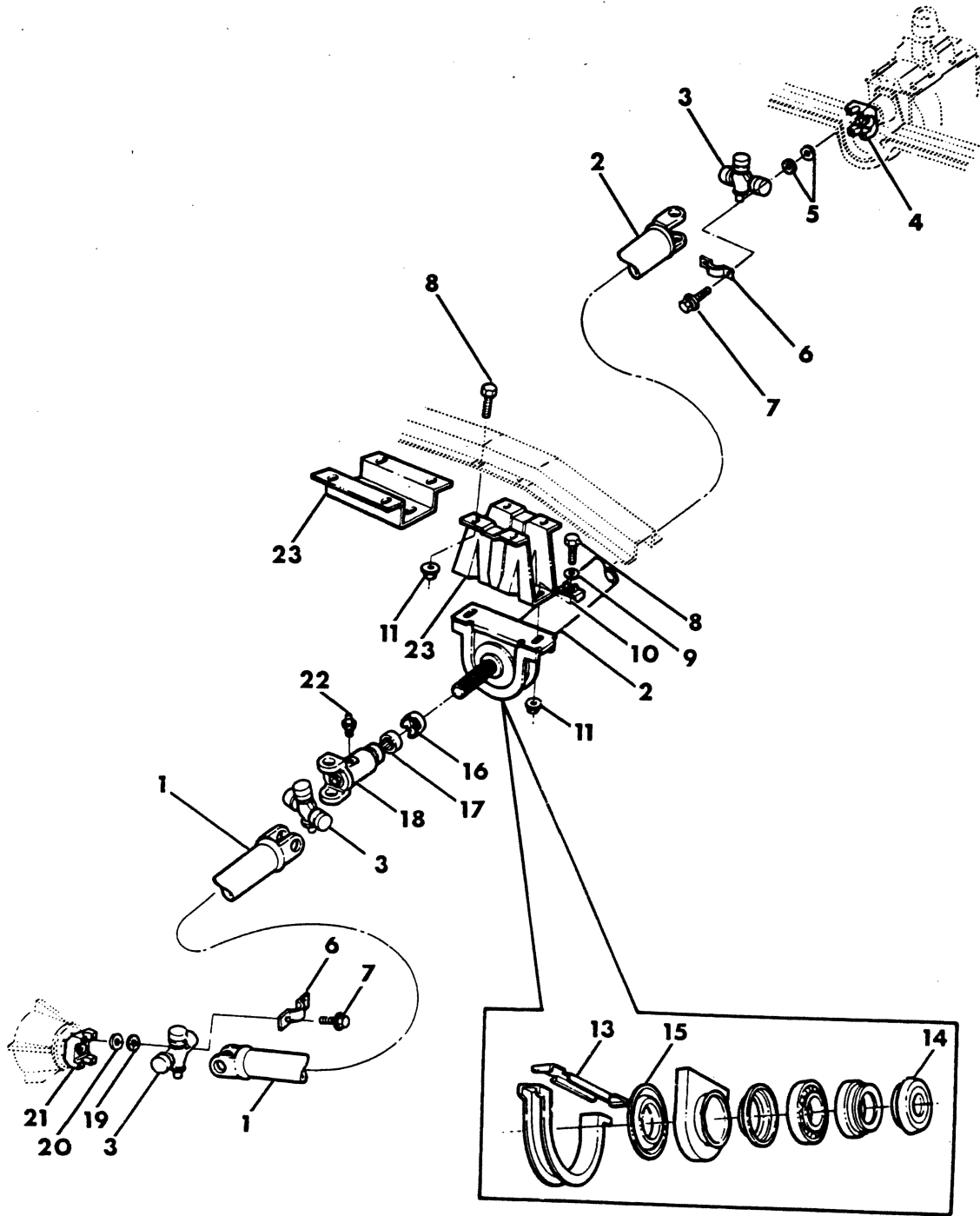
<b>LIGHT</b>	A = All Sport Utility (Ramcharger).	B = All Compact Models.	D = Conventional Cab.
<b>DUTY</b>	AD = 2 Wheel Drive Only (Ramcharger).	CB-MB = Compact Front Section Only.	W = Conventional Cab 4 Wheel Drive.
<b>CODES:</b>	AW = 4 Wheel Drive Only (Ramcharger).	P = Forward Control Chassis.	M = Motor Home.
<b>MEDIUM-HEAVY CODES:</b> XNT = Low Cab Forward. D = Conventional Cab. S = School Bus. W = 4-Wheel Drive.			

AR=Use as Required      # =New Part Number      Printed in U.S.A.      June, 1982



## PROPELLER SHAFT, 2 PIECE, D1,2,3,4-RD2

8316 600



ITEM	PART NUMBER	QTY	MODEL	DESCRIPTION
------	-------------	-----	-------	-------------

PROPELLER SHAFT, 2 PIECE, D1,2,3,4-RD2

ITEM	PART NUMBER	QTY	MODEL	DESCRIPTION
				TUBE, Propeller Shaft, Rear
1	3827 051	1	D1, 131 W.B.	w/435,445 Trans., 9-1/4 Rear Axle, 225,318,360 Eng. (7260-7290)
	4112 217	1	D1, 131 W.B.	w/435,445 Trans., 9-1/4 Rear Axle, 225,318,360 Eng. (7260) - 1979-80-81
	3827 054	1	D1, 133 W.B.	w/All Trans., 9-1/4 Rear Axle, 225,318,360,400,MMC Diesel Eng. (7260-7290)
	2227 499	1	D1, 133 W.B.	w/All Trans., 8-3/8 Rear Axle, Except 440, Club Cab (7260)
	3633 261	1	D1, 133 W.B.	w/All Trans., All Rear Axle, 440 Eng., Club Cab (7290), 1978
	2227 499	1	D1, 133 W.B.	w/All Trans., All Rear Axle, All Eng. (7260) - 1979
	3827 056	1	D1, 149 W.B.	w/All Trans., 9-1/4 Rear Axle, 225,318,360,400,MMC Diesel Eng. (7260-7290)
	4086 386	1	D1, 149 W.B.	w/All Trans., 8-3/8 Rear Axle, Except 440, Club Cab (7260)
	3733 845	1	D1, 149 W.B.	w/727 Trans., 9-1/4 Rear Axle, 440 Eng., Club Cab (7290)
	2954 959	1	D2, 131 W.B.	w/435,445 Trans., Spicer 60-5500 lb. Rear Axle, All Eng. (7260)
	3633 259	1	D2, 131 W.B.	w/435,445 Trans., Spicer 60-6200 lb. Rear Axle, 225,318,360,400 Eng. (7290)
	3633 259	1	D2, 131 W.B.	w/445 Trans., Spicer 60-5500,6200 lb. Rear Axle, 440 Eng. (7290)
	3736 447	1	D2, 149 W.B.	w/All Trans., Spicer 60-5500 lb. Rear Axle, 225,318,360,400,MMC Diesel Eng. (7260)
	3820 736	1	D2, 149 W.B.	w/All Trans., Spicer 60-6200 lb. Rear Axle, 225,318,360,400,MMC Diesel Eng. (7290)
	3820 736	1	D2, 149 W.B.	w/All Trans., Spicer 60-5500,6200 lb. Rear Axle, 440 Eng. (7290)
	4086 386	1	RD2, 149 W.B.	w/727 Trans., Spicer 60 Rear Axle, w/4.10:1 Ratio (7260)
	3893 431	1	D2, 165 W.B.	w/All Trans., Spicer 60-6200 lb. Rear Axle, All Eng.(7290)
	3633 259	1	D3, 131 W.B.	w/435,445 Trans., All Rear Axle, All Eng. (7290)
	2954 959	1	D3, 131 W.B.	w/435,445 Trans. (7260) Up TO 4-1-1981
	4137 306	1	D3, 131 W.B.	w/435 Trans. (7260) After 4-1-1981
	2227 499	1	D3,4,135W.B.	w/All Trans., All Rear Axle, 225,318,360,400 Eng. (7260) Up To 4-1-1981
	4137 309	1	D3,4,135W.B.	(7260) After 4-1-1981
	3633 261	1	D3, 135 W.B.	w/All Trans., All Rear Axle, 440 Eng. (7290)
	3736 447	1	D3, 149 W.B.	w/All Trans., All Rear Axle, 225,318,360,400 Eng. (7260) Up To 4-1-1981
	4137 312	1	D3, 149 W.B.	(7260) After 4-1-1981
	3820 736	1	D3, 149 W.B.	w/All Trans., All Rear Axle, 440 Eng. (7290)
	4039 342	1	D3-4,159W.B.	w/All Trans., All Rear Axle, 225,318,360,400 Eng. (7260)
	3633 262	1	D3, 159 W.B.	w/All Trans., All Rear Axle, 440 Eng. (7290)
	4112 220	1	D2,3 165W.B.	w/All Trans., All Rear Axle, 225,318,360,400 Eng. (7260)
	3893 431	1	D3, 165 W.B.	w/All Trans., All Rear Axle, 440 Eng. (7290)
2				TUBE, Propeller Shaft, Front
	2914 275	1	All	w/All Trans., All Rear Axle, 225,318,360,400,MMC Diesel Eng. (7260) w/o Center Bearing - 1978
	3496 031	1	D1,2-RD2	(7260) w/Center Bearing - 1979-80-81
	3496 031	1	D3,4	(7260) w/Center Bearing, UP TO 4-1-1981
	4137 303	1	D3,4	(7260) w/Center Bearing, AFTER 4-1-1981
	3633 254	1	All	w/All Trans., All Rear Axle, 440 Eng., w/o Center Brg. (7290)
	3633 250	1	All	w/Center Brg. (7290)
	3633 256	1	All	TUBE ONLY, w/o U/Joint Or Center Brg.
3				CROSS PACKAGE, Universal Joint

<b>LIGHT DUTY CODES:</b>	A = All Sport Utility (Ramcharger).	B = All Compact Models.	D = Conventional Cab.
	AD = 2 Wheel Drive Only (Ramcharger).	CB-MB = Compact Front Section Only.	W = Conventional Cab 4 Wheel Drive.
	AW = 4 Wheel Drive Only (Ramcharger).	P = Forward Control Chassis.	M = Motor Home.
<b>MEDIUM-HEAVY CODES:</b>	XNT = Low Cab Forward.	D = Conventional Cab.	S = School Bus. W = 4-Wheel Drive.

# 1978-81 LIGHT DUTY TRUCK PARTS CATALOG

ITEM	PART NUMBER	QTY	MODEL	DESCRIPTION
<b>PROPELLER SHAFT, 2 PIECE, D1,2,3,4-RD2</b>				
	3004 900	AR	All	(7260), w/Grease Fitting
	3780 250	AR	All	(7260), w/o Grease Fitting
	3634 563	AR	All	(7290), w/Grease Fitting
	4057 025	AR	All	(7290), w/o Grease Fitting
4				YOKE, Trans. Output Shaft
	2508 238	1	All	(7260) 23 Spline
	2882 996	1	All	(7290) 23 Spline
5	2298 967	1	All	NUT and WASHER PACKAGE, Trans. Output Shaft
6				CLAMP, U/Joint Cross Yoke
	1828 824	AR	All	(7260)
	2781 904	AR	All	(7290)
7	6029 562	AR	All	SCREW, Clamp Attaching
8		6	All	BOLT, 7/16-20 x 1 (not serviced)
9		2	All	WASHER, 7/16 Plain (not serviced)
10	4036 566	2	D1,2	RETAINER, w/131 and 133 W.B.
11	6029 333	6	All	NUT, 7/16-20
12	3621 457	1	All	CENTER BEARING PACKAGE, w/Support and Insulator - 1978-79
	4117 147	1	All	1980-81
	3632 991	1	All	BEARING w/GREASE RETAINER, Center P/Shaft
13	3632 995	1	All	RETAINER, Center Bearing Insulator
14	3632 997	1	All	RETAINER, Center Bearing
15	3632 996	2	All	SLINGER, Center Bearing
16				CAP, Oil Seal
	4117 049	1	All	(7260)
	2832 395	1	All	(7290), Up To 11-15-1978
	4117 050	1	All	After 11-15-1978
17				SEAL, Yoke Oil
	599 258	1	All	(7260), Up To 11-15-1978
	4117 049	1	All	(7260), After 11-15-1978
	563 099	1	All	(7290), Up To 11-15-1978
	4117 050	1	All	After 11-15-1978
18				YOKE, Sliding
	2237 264	1	All	(7260) 16 Spline
	2882 998	1	All	(7290) 16 Spline
19				NUT, Rear Axle Yoke
	6028 041	1	All	(7260)
	1795 173	1	All	(7290)
20				WASHER, Rear Axle Yoke Nut
	2070 117	1	All	(7260)
	1795 175	1	All	(7290)
21				YOKE, w/Slinger, Rear Axle
	3723 251	1	D1	(7260), 27 Spline, 2 1/8" Span, 8-3/8 Axle
	3432 487	1	D1	(7290), 29 Spline, 2 5/8" Spline, 9-1/4 Axle
	3432 485	1	D1	(7260) Flange, 29 Spline, 2 1/8" Span, 9-1/4 Axle
	4117 781	1	D2,3,4-RD2	(7260), 29 Spline, 2 1/8" Span, Spicer 60,70
	3732 950	1	D2,3,4	(7290), 29 Spline, 2 5/8" Span, Spicer 60
	3516 070	1	D2,3,4	YOKE ONLY, (7290), 29 Spline, 2 5/8" Span
	2952 469	1	All	SLINGER, (7260-7290), w/Spicer Axle
22	9411 022	AR	All	NIPPLE, Grease 1/8-Pipe

**LIGHT DUTY CODES:** A = All Sport Utility (Ramcharger). B = All Compact Models. D = Conventional Cab.  
 AD = 2 Wheel Drive Only (Ramcharger). CB-MB = Compact Front Section Only. W = Conventional Cab 4 Wheel Drive.  
 AW = 4 Wheel Drive Only (Ramcharger). P = Forward Control Chassis. M = Motor Home.

**MEDIUM-HEAVY CODES:** XNT = Low Cab Forward. D = Conventional Cab. S = School Bus. W = 4-Wheel Drive.

AR=Use as Required

# =New Part Number

Printed in U.S.A.

June, 1982



ITEM	PART NUMBER	QTY	MODEL	DESCRIPTION
------	-------------	-----	-------	-------------

**PROPELLER SHAFT, 2 PIECE, D1,2,3,4-RD2**

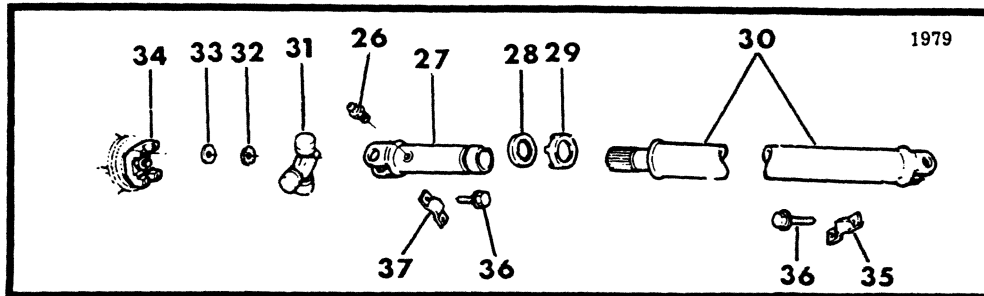
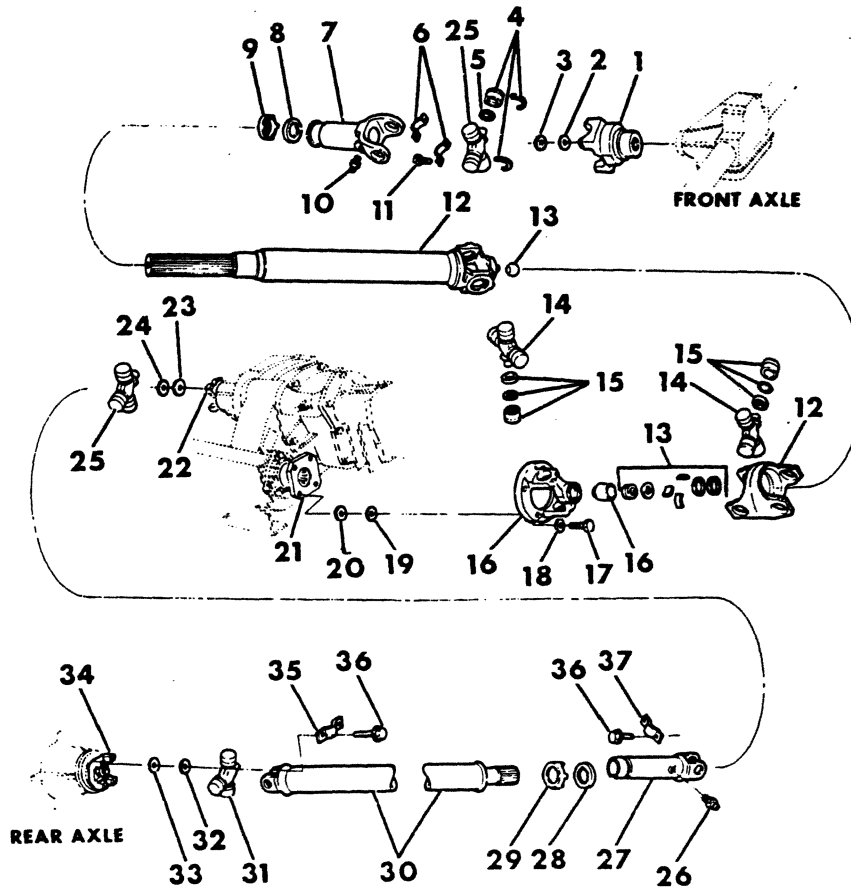
23	9411 244	AR	All	1/4-28 BRACKET, Center Bearing Mounting
	3893 756	1	All	w/435,445 Trans. (All Except as Shown Below)
	3497 995	1	All	w/ 131 W.B., w/435,445 Trans., 1978
	4115 603	1	D2	w/149 W.B., Crew Cab, w/435,445 Trans., 1979-80-81

<b>LIGHT</b>	A = All Sport Utility (Ramcharger).	B = All Compact Models.	D = Conventional Cab.
<b>DUTY</b>	AD = 2 Wheel Drive Only (Ramcharger).	CB-MB = Compact Front Section Only.	W = Conventional Cab 4 Wheel Drive.
<b>CODES:</b>	AW = 4 Wheel Drive Only (Ramcharger).	P = Forward Control Chassis.	M = Motor Home.
<b>MEDIUM-HEAVY CODES:</b> XNT = Low Cab Forward. D = Conventional Cab. S = School Bus. W = 4-Wheel Drive.			
AR=Use as Required		# = New Part Number	Printed in U.S.A.

# 1978-81 LIGHT DUTY TRUCK PARTS CATALOG

## PROPELLER SHAFT, 2 PIECE W1,2,3,4 (w/115,131,133,135 W.B.)

8316 700A



ITEM	PART NUMBER	QTY	MODEL	DESCRIPTION
<b>PROPELLER SHAFT, 2 PIECE W1,2,3,4 (w/115,131,133,135 W.B.)</b>				
1				<b>YOKE &amp; SLINGER, Front Axle</b>
	2952 894	1	W1,2	w/3500 Lb. Front Axle, 26 Spline, 2 1/8" Span
	4117 781	1	W2	w/4500 Lb. Front Axle, 29 Spline, 2 1/8" Span
	1791 574	1	W1,2	SLINGER, Yoke, w/3500 Lb. Front Axle
	4117 781	1	W3,4	
2				<b>WASHER, Front Axle Yoke</b>
	1791 576	1	W1,2	w/3500 Lb. Front Axle
	1795 175	1	W2,3,4	w/4500 Lb. Front Axle
3				<b>NUT, Front Axle Yoke</b>
	1791 575	1	W1,2	w/3500 Lb. Front Axle
	1795 173	1	W2,3,4	w/4500 Lb. Front Axle
4				<b>BUSHING, w/ROLLER (Serv. in Cross Pkg.)</b>
	3004 900	1	All	w/Grease Fitting Hole (7260)
	3780 250	1	All	w/o Grease Fitting Hole (7260)
5	857 999	4	All	SEAL, Dust
6	1828 824	2	All	CLAMP, U/Joint Cross Yoke
7	2237 264	1	All	YOKE, Frt. Prop. Shaft, Sliding
8	599 258	1	All	SEAL, Yoke Oil, Up To 11-15-78
	4117 049	1	All	After 11-15-78
9	4117 049	1	All	CAP, Oil Seal
10	9411 022	AR	All	NIPPLE, Grease 1/8-Pipe
	9411 244	AR	All	1/4-28
11	6029 562	4	All	SCREW, Clamp Attaching
12				<b>TUBE, Propeller Shaft Front Axle (7260)</b>
	3898 646	1	W1,2	w/3500 Lb. Front Axle, w/203 T/Case
	4164 692	1	W1,2	w/3500 Lb. Front Axle, w/208 T/Case, UP TO 10-1-1980
	4137 098	1	W1,2	AFTER 10-1-1980
	3898 647	1	W2,3,4	w/4500 Lb. Front Axle, w/203 T/Case
	4164 693	1	W2,3,4	w/4500 Lb. Front Axle, w/205 T/Case, UP TO 10-1-1980
	4137 099	1	W2,3,4	AFTER 10-1-1980
13	4049 697	1	All	KIT, Center Ball
14	4030 848	2	All	CROSS PACKAGE, Universal Joint
15	4030 850	4	All	BUSHING PACKAGE
16	4031 001	1	All	FLANGE
17	6030 269	4	All	BOLT
18	131 100	4	All	LOCKWASHER
19	3894 494	1	All	NUT, T/Case Frt. Yoke or Flange, w/203 T/Case
	4167 924	1	All	w/205,208 T/Case
20				<b>WASHER, T/Case Frt. Yoke or Flange</b>
	2070 117	1	All	Steel
	3822 840	1	All	Rubber
21	3898 688	1	All	YOKE, Transfer Case Front Output Shaft, w/203 T/Case
	4167 912	1	All	FLANGE, Transfer Case Front Output Shaft, w/205,208 T/Case
	4210 611	1	W1,2	SLINGER, T/Case Front Output Shaft Flange, w/208 T/Case
	4210 611	1	W2,3,4	GUARD, T/Case Front Output Shaft Flange, w/205 T/Case
22	2909 667	1	All	YOKE, Transfer Case Rear Output Shaft, w/203 T/Case
	3516 495	1	W1,2	w/208 T/Case
	2909 669	1	W2	w/205 T/Case, (7260)
	2909 670	1	W3,4	w/205 T/Case, (5380)

<b>LIGHT</b>	A = All Sport Utility (Ramcharger).	B = All Compact Models.	D = Conventional Cab.
<b>DUTY</b>	AD = 2 Wheel Drive Only (Ramcharger).	CB-MB = Compact Front Section Only.	W = Conventional Cab 4 Wheel Drive.
<b>CODES:</b>	AW = 4 Wheel Drive Only (Ramcharger).	P = Forward Control Chassis.	M = Motor Home.

**MEDIUM-HEAVY CODES:** XNT = Low Cab Forward. D = Conventional Cab. S = School Bus. W = 4-Wheel Drive.

AR=Use as Required

# = New Part Number

Printed in U.S.A.

June, 1982

# 1978-81 LIGHT DUTY TRUCK PARTS CATALOG

ITEM	PART NUMBER	QTY	MODEL	DESCRIPTION
<b>PROPELLER SHAFT, 2 PIECE</b> <b>W1,2,3,4 (w/115,131,133,135 W.B.)</b>				
23				<b>WASHER, Rear Output Shaft Yoke</b>
	578 994	1	All	Steel
	3822 839	1	All	Rubber
24	2954 140	1	All	<b>NUT, T/Case Rr. Yoke, w/203,205 T/Case</b>
	4167 924	1	All	w/208 T/Case
25				<b>CROSS PACKAGE, Universal Joint</b>
	3004 900	2	All	(7260), w/Grease Fitting
	3780 250	2	All	(7260), w/o Grease Fitting
26	9411 022	AR	All	<b>NIPPLE, Grease 1/8-Pipe</b>
	9411 244	AR	All	1/4-28
27	2237 264	1	All	<b>YOKE, Sliding, 16 Spline (7260)</b>
	2832 393	1	W3,4	16 Spline (5380)
28	599 258	1	All	<b>SEAL, Yoke Oil, Up to 11-15-1978</b>
	4117 049	1	All	After 11-15-1978
29	4117 049	1	All	<b>CAP, Oil Seal</b>
30				<b>TUBE, Propeller Shaft, Rear</b>
	4031 813	1	W1	w/115 W.B., w/9-1/4 Rear Axle (7260-7290)
	4089 609	1	W1	w/115 W.B., w/8-3/8 Rear Axle (7260)
	4112 946	1	W1	w/115 W.B., w/9-1/4 Rear Axle, w/208 T/Case (7260)
	4086 373	1	W1	w/131 W.B., w/9-1/4 Rear Axle (7260-7290)
	4089 611	1	W1	w/131 W.B., w/8-3/8 Rear Axle (7260)
	4112 947	1	W1	w/131 W.B., w/9-1/4 Rear Axle, w/208 T/Case (7260)
	3827 080	1	W1	w/133 W.B., w/9-1/4 Rear Axle (7260-7290)
	3827 088	1	W1	w/133 W.B., w/9-1/4 Rear Axle (7260) - 1979
	4112 948	1	W1	w/133 W.B., w/9-1/4 Rear Axle (7260)
	4030 452	1	W1	w/133 W.B., w/8-3/8 Rear Axle (7260)
	4089 106	1	W2	w/131 W.B., w/ Spicer 60, 5500 lb. Rear Axle, w/3.54:1 Ratio (7260-7290)
	4030 449	1	W2	w/131 W.B., w/Spicer 60, 5500 lb. Rear Axle, w/4.10:1 Ratio (7260)-1978-79
	3827 088	1	W2	w/131 W.B., w/Spicer 60, (7260) - 1980
	4030 452	1	W2	w/131 W.B., w/Spicer 60, (7260) - 1981
	4030 452	1	W3,4	w/135" W.B. (7260) - 1978-79
	3735 973	1	W3,4	w/135" W.B. (5380) - 1980-81
31				<b>CROSS PACKAGE, Universal Joint</b>
	3004 900	AR	All	(7260), w/Grease Fitting
	3780 250	AR	All	(7260), w/o Grease Fitting
	3634 563	AR	All	(7290), w/Grease Fitting
	4057 025	AR	All	(7290), w/o Grease Fitting
	4213 200	AR	All	(5380), w/Grease Fitting
	3780 272	AR	All	(5380), w/o Grease Fitting
32				<b>NUT, Rear Axle Yoke</b>
	6028 041	1	W1	
	1795 173	1	W2,3,4	
33				<b>WASHER, Rear Axle Yoke</b>
	2070 117	1	W1	
	1795 175	1	W2,3,4	
34				<b>YOKE, w/Slinger, Rear Axle</b>
	3723 251	1	W1	(7260), 27 Spline, 2 1/8" Span, 8-3/8 Axle

**LIGHT** A = All Sport Utility (Ramcharger). B = All Compact Models. D = Conventional Cab.  
**DUTY** AD = 2 Wheel Drive Only (Ramcharger). CB-MB = Compact Front Section Only. W = Conventional Cab 4 Wheel Drive.  
**CODES:** AW = 4 Wheel Drive Only (Ramcharger). P = Forward Control Chassis. M = Motor Home.

**MEDIUM-HEAVY CODES:** XNT = Low Cab Forward. D = Conventional Cab. S = School Bus. W = 4-Wheel Drive.

AR=Use as Required

# =New Part Number

Printed in U.S.A.

June, 1982

ITEM	PART NUMBER	QTY	MODEL	DESCRIPTION
<b>PROPELLER SHAFT, 2 PIECE</b>				
<b>W1,2,3,4 (w/115,131,133,135 W.B.)</b>				
	3432 485	1	W1	(7260) Flange, 29 Spline, 2 1/8" Span, 9-1/4 Axle
	3432 487	1	W1	(7290), 29 Spline, 2 5/8" Span, 9-1/4 Axle
	4117 781	1	W2,3,4	(7260), 29 Spline, 2 1/8" Span, Spicer 60
	3732 950	1	W2,3,4	(7290), 29 Spline, 2 5/8" Span, Spicer 60
	4164 132	1	W3,4	(5380), Spicer 70
	3516 070	1	W2,3,4	YOKE ONLY, (7290), 29 Spline, 2 5/8" Span
	2952 469	1	All	SLINGER, (7260-7290), w/Spicer Axle
35				CLAMP, U/Joint Cross Yoke
	2781 904	2	W1	(7290)
	1828 824	2	W2,3,4	(7260)
	1939 414	2	W3,4	(5380)
36	6029 562	8	All	SCREW, Clamp Attaching (7260-7290)
	1939 415	AR	W3,4	(5380)

**LIGHT** A = All Sport Utility (Ramcharger). B = All Compact Models. D = Conventional Cab.  
**DUTY** AD = 2 Wheel Drive Only (Ramcharger). CB-MB = Compact Front Section Only. W = Conventional Cab 4 Wheel Drive.  
**CODES:** AW = 4 Wheel Drive Only (Ramcharger). P = Forward Control Chassis. M = Motor Home.

**MEDIUM-HEAVY CODES:** XNT = Low Cab Forward. D = Conventional Cab. S = School Bus. W = 4-Wheel Drive.

AR=Use as Required

# =New Part Number

Printed in U.S.A.

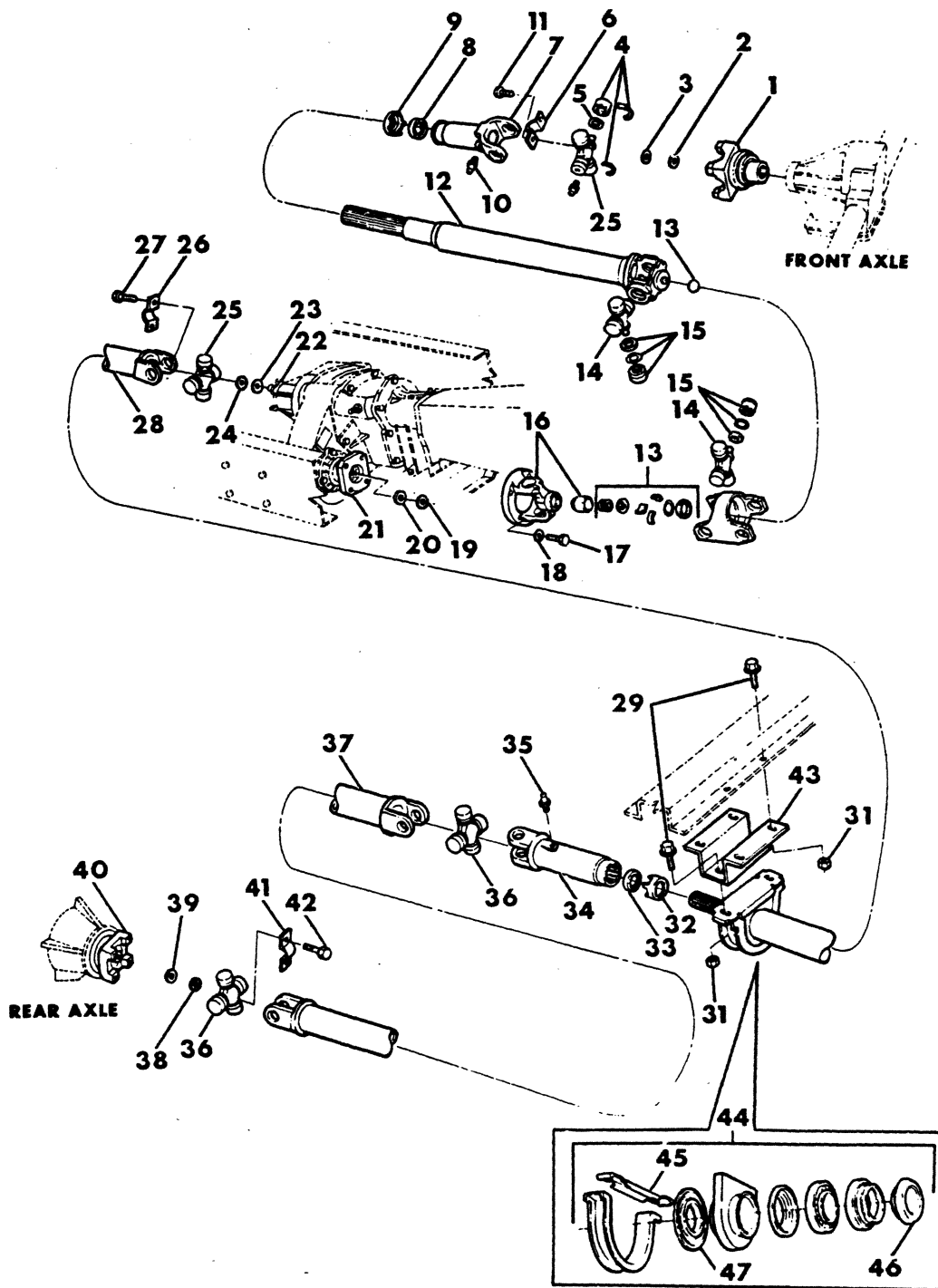
June, 1982

# 1978-81 LIGHT DUTY TRUCK PARTS CATALOG

PROP. SHAFT AND  
UNIVERSAL JOINT

PROPELLER SHAFT, 3 PIECE, W1,2 (w/149" W.B.)

8316 800



ITEM	PART NUMBER	QTY	MODEL	DESCRIPTION
<b>PROPELLER SHAFT, 3 PIECE, W1,2 (w/149" W.B.)</b>				
1				YOKE & SLINGER, Front Axle
	2952 894	1	W1,2	w/3500 Lb. Front Axle, 26 Spline, 2 1/8" Span
	4117 781	1	W2	w/4500 Lb. Front Axle, 29 Spline, 2 1/8" Span
	1791 574	1	W1,2	SLINGER, Yoke, w/3500 Lb. Front Axle
2				WASHER, Front Axle Yoke
	1791 576	1	W1,2	w/3500 Lb. Front Axle
	1795 175	1	W2	w/4500 Lb. Front Axle
3				NUT, Front Axle Yoke
	1791 575	1	W1,2	w/3500 Lb. Front Axle
	1795 173	1	W2	w/4500 Lb. Front Axle
4				BUSHING, w/ROLLER (Serv. in Cross Pkg.)
	3004 900	1	All	(7260), w/Grease Fitting
	3780 250	1	All	(7260), w/o Grease Fitting
5	857 999	4	All	SEAL, U/J Cross Roller Dust
6	1828 824	2	All	CLAMP, U/Joint Cross Yoke (7260)
7	2237 264	1	All	YOKE, Sliding, 16 Spline (7260)
8	599 258	1	All	SEAL, Oil, Up to 11-15-1978
	4117 049	1	All	After 11-15-1978
9	4117 049	1	All	CAP, Oil Seal
10	9411 022	AR	All	NIPPLE, Grease 1/8-Pipe
	9411 244	AR	All	1/4-28
11	6029 562	4	All	SCREW, Clamp Attaching
12				TUBE, Propeller Shaft, Front
	3898 646	1	W1,2	w/3500 Lb. Front Axle, w/203 T/Case
	4164 692	1	W1,2	w/3500 Lb., w/208 T/Case, UP TO 10-1-1980
	4137 098	1	W1,2	AFTER 10-1-1980
	3898 647	1	W2	w/4500 Lb. Front Axle, w/203 T/Case
	4164 693	1	W2	w/4500 Lb. Front Axle, w/205 T/Case, UP TO 10-1-1980
	4137 099	1	W2	AFTER 10-1-1980
13	4049 697	1	All	KIT, Center Ball
14	4030 848	2	All	CROSS PACKAGE
15	4030 850	4	All	BUSHING PACKAGE
16	4031 001	1	All	FLANGE
17	9417 471	4	All	BOLT
18	131 100	4	All	LOCKWASHER
19	3894 494	1	All	NUT, T/Case Frt. Yoke or Flange, w/203 T/Case
	4167 924	1	All	w/205,208 Transfer Case
20				WASHER, T/Case Frt. Yoke or Flange
	2070 117	1	All	Steel
	3822 840	1	All	Rubber
21	3898 688	1	All	YOKE, T/Case Front Output Shaft, w/203 T/Case
	4167 912	1	All	FLANGE, T/Case Front Output Shaft, w/205,208 T/Case
	4210 611	1	W1,2	SLINGER, T/Case Front Output Shaft Flange, w/208 T/Case
	4210 611	1	W2	GUARD, T/Case Front Output Shaft Flange, w/205 T/Case
22	2909 667	1	All	YOKE, T/Case Rear Output Shaft, w/203 T/Case, 32 Spl.
	3516 495	1	W1,2	w/208 T/Case
	2909 669	1	W2	w/205 T/Case, 32 Spline (7260)
23				WASHER, Rear Output Shaft
	578 994	1	All	Steel

**LIGHT** A = All Sport Utility (Ramcharger). B = All Compact Models. D = Conventional Cab.  
**DUTY** AD = 2 Wheel Drive Only (Ramcharger). CB-MB = Compact Front Section Only. W = Conventional Cab 4 Wheel Drive.  
**CODES:** AW = 4 Wheel Drive Only (Ramcharger). P = Forward Control Chassis. M = Motor Home.

**MEDIUM-HEAVY CODES:** XNT = Low Cab Forward. D = Conventional Cab. S = School Bus. W = 4-Wheel Drive.

AR=Use as Required

# = New Part Number

Printed in U.S.A.

June, 1982

# 1978-81 LIGHT DUTY TRUCK PARTS CATALOG

ITEM	PART NUMBER	QTY	MODEL	DESCRIPTION
<b>PROPELLER SHAFT, 3 PIECE, W1,2 (w/149" W.B.)</b>				
	3822 839	1	All	Rubber
24	2954 140	1	All	NUT, Yoke, w/203,205 T/Case, Rear
	4167 924	1	All	w/208 T/Case
25				CROSS PACKAGE, Universal Joint
	3004 900	2	All	(7260), w/Grease Fitting
	3780 250	2	All	(7260), w/o Grease Fitting
26	1828 824	2	All	CLAMP, U/Joint Cross Yoke (7260)
27	6029 562	4	All	SCREW, Clamp Attaching
28	3823 377	1	All	TUBE ONLY, Intermediate Propeller Shaft, w/o Center Brg., w/203 T/Case
	3823 376	1	All	TUBE ASSY., Intermediate w/Center Brg., w/203 T/Case
	4164 730	1	W1,2	w/Center Brg., w/208 T/Case
	4164 731	1	W2	w/Center Brg., w/205 T/Case
29		6	All	BOLT, 7/16-14 x 1 (not serviced)
30		2	All	WASHER, 7/16 (not serviced)
31		6	All	NUT, 7/16-14 (not serviced)
32	4117 049	1	All	CAP, Oil Seal
33	599 258	1	All	SEAL, Yoke Oil, Up To 11-15-1978
	4117 049	1	All	After 11-15-1978
34	2237 264	1	All	YOKE, Sliding, 16 Spline (7260)
35	9411 022	AR	All	NIPPLE, Grease 1/8-Pipe
	9411 244	AR	All	1/4-28
36				CROSS PACKAGE, Universal Joint
	3004 900	AR	All	(7260), w/Grease Fitting
	3780 250	AR	All	(7260), w/o Grease Fitting
	3634 563	AR	All	(7290) w/Grease Fitting
	4057 025	AR	All	(7290), w/o Grease Fitting
37				TUBE, Propeller Shaft, Rear
	3827 082	1	W1	w/9-1/4 Rear Axle (7260-7290)
	4089 613	1	W1	w/9-1/4 Rear Axle (7260)
	4089 109	1	W2	w/Spicer 60,5500 lb., Rear Axle, w/3.54:1 Ratio (7260-7290)
	4086 386	1	W2	w/Spicer 60,5500 lb., Rear Axle, w/4.10:1 Ratio (7260)
38				NUT, Rear Axle Yoke
	6028 041	1	W1	
	1795 173	1	W2	
39				WASHER, Rear Axle Yoke
	2070 117	1	W1	
	1795 175	1	W2	
40				YOKE, w/Slinger, Rear Axle
	3432 487	1	W1	(7290), 29 Spline, 2 5/8" Span, w/9-1/4 Axle
	3432 485	1	W1	(7260) Flange, 29 Spline, 2 1/8" Span, w/9-1/4 Axle
	4117 781	1	W2	(7260), 29 Spline, 2 1/8" Span, w/Spicer Axle
	2952 469	1	W2	SLINGER, (7260), w/Spicer Axle
41				CLAMP, U/Joint Cross Yoke
	2781 904	2	W1	(7290)
	1828 824	2	W2	(7260)
42	6029 562	8	All	SCREW, Clamp Attaching
43				BRACKET, Center Bearing Mounting
	4030 479	1	W1,2	Club Cab

**LIGHT DUTY CODES:** A = All Sport Utility (Ramcharger). B = All Compact Models. D = Conventional Cab.  
 AD = 2 Wheel Drive Only (Ramcharger). CB-MB = Compact Front Section Only. W = Conventional Cab 4 Wheel Drive.  
 AW = 4 Wheel Drive Only (Ramcharger). P = Forward Control Chassis. M = Motor Home.

**MEDIUM-HEAVY CODES:** XNT = Low Cab Forward. D = Conventional Cab. S = School Bus. W = 4-Wheel Drive.

AR=Use as Required

#=New Part Number

Printed in U.S.A.

June, 1982



ITEM	PART NUMBER	QTY	MODEL	DESCRIPTION
<b>PROPELLER SHAFT, 3 PIECE, W1,2 (w/149" W.B.)</b>				
	4030 480	1	W2	Crew Cab, 1978
	4115 602	1	W2	Crew Cab, 1979-80-81
44	3621 457	1	All	CENTER BEARING PACKAGE, w/Support and Insulator - 1978-79
	4117 147	1	All	1980-81
	3632 991	1	All	BEARING w/GREASE RETAINER, Center P/Shaft
45	3632 995	1	All	RETAINER, Center Bearing Insulator
46	3632 997	1	All	RETAINER, Center Bearing
47	3632 996	2	All	SLINGER, Center Bearing

<b>LIGHT</b>	A = All Sport Utility (Ramcharger).	B = All Compact Models.	D = Conventional Cab.
<b>DUTY</b>	AD = 2 Wheel Drive Only (Ramcharger).	CB-MB = Compact Front Section Only.	W = Conventional Cab 4 Wheel Drive.
<b>CODES:</b>	AW = 4 Wheel Drive Only (Ramcharger).	P = Forward Control Chassis.	M = Motor Home.

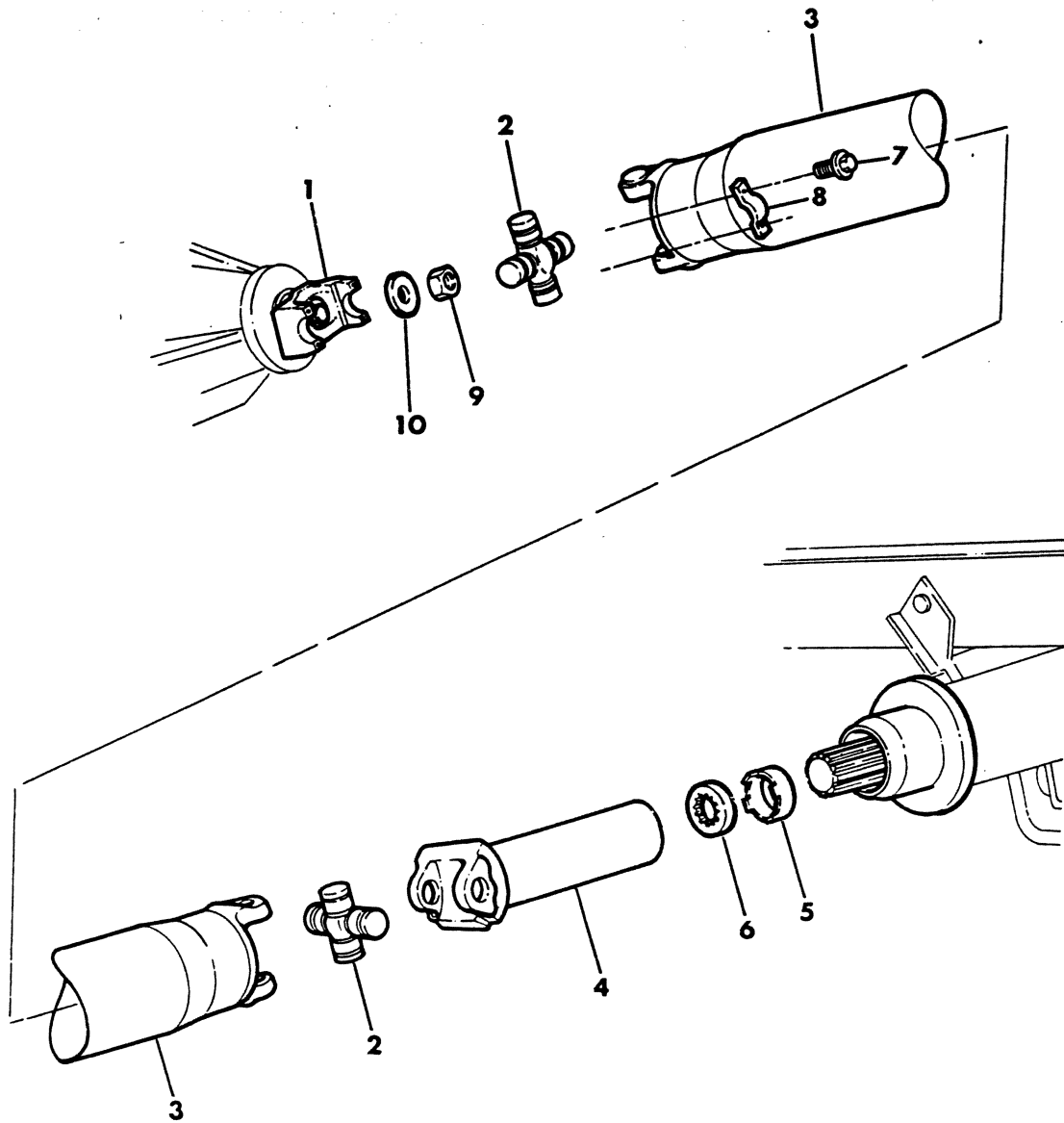
---

**MEDIUM-HEAVY CODES:** XNT = Low Cab Forward. D = Conventional Cab. S = School Bus. W = 4-Wheel Drive.

AR=Use as Required      # = New Part Number      Printed in U.S.A.      June, 1982

## PROPELLER SHAFT, SINGLE, M3 (w/104,125 W.B.)

8316 900



ITEM	PART NUMBER	QTY	MODEL	DESCRIPTION
<b>PROPELLER SHAFT, SINGLE, M3 (w/104,125 W.B.)</b>				
1				<b>YOKE &amp; SLINGER, Rear Axle</b>
	4117 781	1	M3	w/360 Eng., 29 Spline (7260)
	2910 944	1	M3	w/440 Eng., 29 Spline (5380)
	2910 945	1	M3	YOKE ONLY, 29 Spline (5380)
	2952 469	1	M3	SLINGER, (5380-7260)
2				<b>CROSS PACKAGE, Universal Joint</b>
	3004 900	AR	M3	(7260), w/Grease Fitting
	3780 250	AR	M3	(7260), w/o Grease Fitting
	4213 200	AR	M3	(5380), w/Grease Fitting
3				<b>TUBE, Propeller Shaft</b>
	3496 134	1	M3	w/104 W.B. w/360 Eng. (7260)
	3637 142	1	M3	w/125 W.B. w/360 Eng. (7260)
	4031 284	1	M3	w/125 W.B. w/440 Eng. (5380)
4				<b>YOKE, Sliding</b>
	2883 575	1	M3	w/3496134, 3637142 P/Shaft, 29 Spl. (7260)
	2781 932	1	M3	w/4031284 P/Shaft, 29 Spline (7290)
5				<b>CAP, Yoke Oil Seal</b>
	4117 049	1	M3	(7260)
	2832 395	1	M3	(5380), Up To 11-15-1978
	4117 050	1	M3	After 11-15-1978
6				<b>SEAL, Yoke Oil</b>
	599 258	1	M3	(7260), Up To 11-15-1978
	4117 049	1	M3	After 11-15-1978
	563 099	1	M3	(5380), Up To 11-15-1978
	4117 050	1	M3	After 11-15-1978
7				<b>SCREW, Clamp Attaching</b>
	6029 562	4	M3	(7260)
	1939 415	4	M3	(5380)
8				<b>CLAMP, U/Joint Cross Yoke</b>
	1828 824	2	M3	(7260)
	1939 414	2	M3	(5380)
9	1795 173	1	M3	NUT, Rear Axle Yoke
10	1795 175	1	M3	WASHER, Rear Axle Yoke

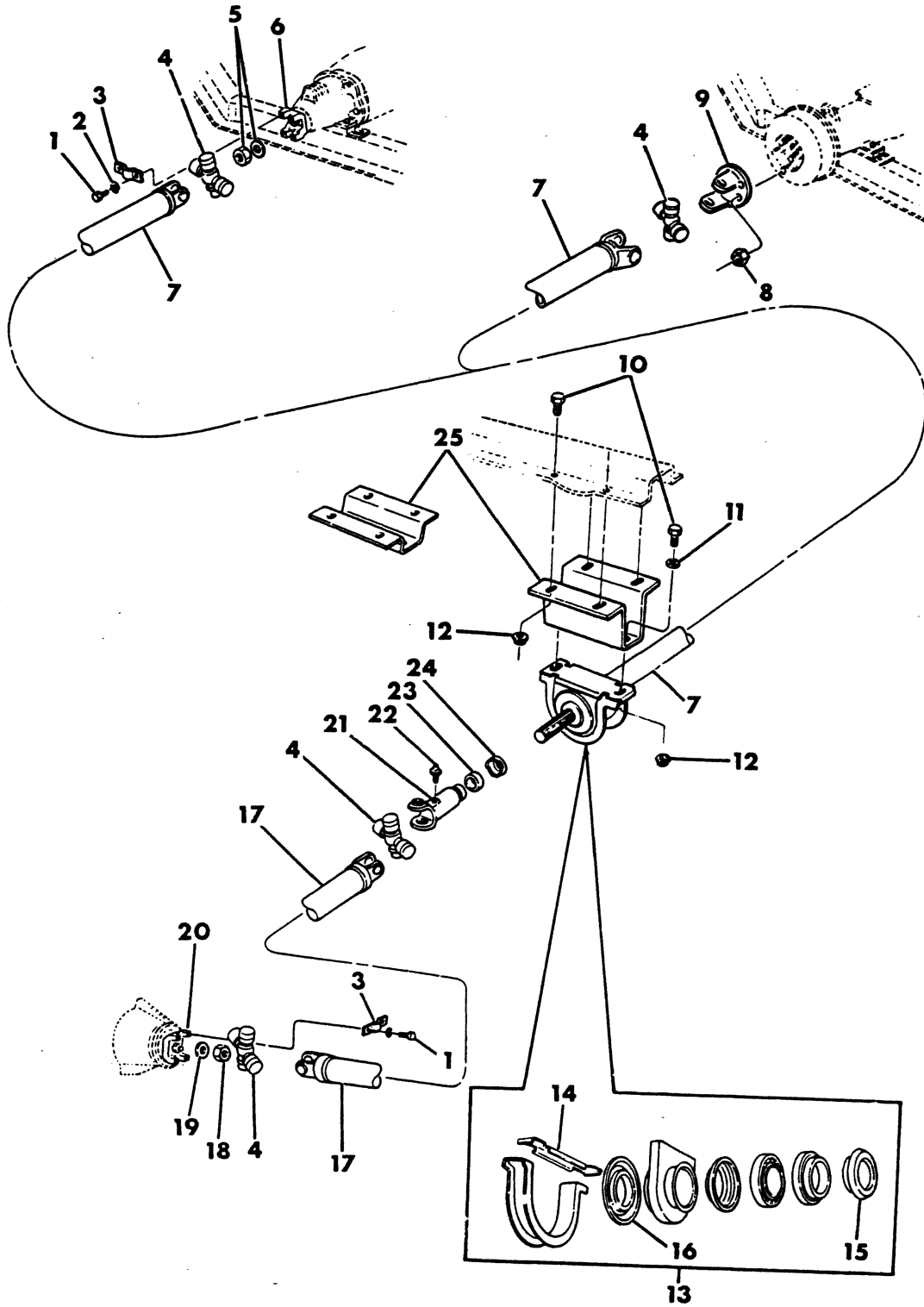
**LIGHT** A = All Sport Utility (Ramcharger). B = All Compact Models. D = Conventional Cab.  
**DUTY** AD = 2 Wheel Drive Only (Ramcharger). CB-MB = Compact Front Section Only. W = Conventional Cab 4 Wheel Drive.  
**CODES:** AW = 4 Wheel Drive Only (Ramcharger). P = Forward Control Chassis. M = Motor Home.

**MEDIUM-HEAVY CODES:** XNT = Low Cab Forward. D = Conventional Cab. S = School Bus. W = 4-Wheel Drive.

# 1978-81 LIGHT DUTY TRUCK PARTS CATALOG

8316 1000

PROPELLER SHAFT, 2 PIECE  
M3,4,5 (w/137,159,178 W.B.)



ITEM	PART NUMBER	QTY	MODEL	DESCRIPTION
<b>PROPELLER SHAFT, 2 PIECE M3,4,5 (w/137,159,178 W.B.)</b>				
1				<b>SCREW, Clamp Attaching</b>
	6029 562	AR	All	(7260)
	1939 415	AR	All	(5380)
2		AR	All	<b>WASHER, Lock 5/16 w/(5380)</b>
3				<b>CLAMP, U/Joint Cross Yoke</b>
	1828 824	AR	All	(7260)
	1939 414	AR	All	(5380)
4				<b>CROSS PACKAGE, Universal Joint</b>
	4213 200	AR	All	(5380) w/Grease Fitting
	3004 900	AR	All	(7260) w/Grease Fitting
	3780 250	AR	All	(7260) w/o Grease Fitting
5	2298 967	1	All	<b>NUT and WASHER PACKAGE, Trans. Output Shaft</b>
6				<b>YOKE, Trans. Output Shaft</b>
	2508 238	1	M3,4	(7260) 23 Spline
	2955 767	1	M3,4	(5380) 23 Spline
7				<b>TUBE, Propeller Shaft, Front</b>
	3641 655	1	M3	w/137 W.B. w/360,440 Eng. (5380) - 1978
	4112 348	1	M3	w/137 W.B. w/360,440 Eng. (5380)- 1979-80
	4112 954	1	M3	w/137 W.B., w/IHC Eng., w/Center Brg.
	3641 597	1	M4	w/137 W.B. w/360 Eng. (7260) - 1978
	4112 259	1	M4	w/137 W.B. w/360 Eng. (7260), w/o Center Brg. - 1979-80
	4112 203	1	M4	w/137 W.B. w/360 Eng. (7260), w/Center Brg. - 1979-80
	3641 655	1	M4	w/137 W.B. w/440 Eng. (5380) - 1978
	4112 348	1	M4	w/137 W.B. w/440 Eng. (5380) - 1979
	4112 204	1	M4	w/137 W.B. w/360 Eng. (5380) w/Center Brg. - 1980
	4112 954	1	M4	w/137 W.B., w/IHC Eng. (5380) w/Center Brg.
	3732 226	1	M4	w/159 W.B. w/360 Eng. (7260) w/o Center Brg. - 1978-79
	3732 225	1	M4	w/159 W.B. w/360 Eng. (7260) w/Center Brg. - 1978-79
	4164 728	1	M4	w/159 W.B. w/360 Eng. (7260) w/Center Brg. - 1980
	3641 659	1	M4	w/159 W.B. w/440 Eng. (5380)
	3641 658	1	M4	w/159 W.B. w/440 Eng. (5380), w/Center Brg.
	3641 658	1	M5	w/159 W.B. w/360 Eng. (5380), w/Center Brg. - 1980
	4112 990	1	M4,5	w/159 W.B., w/IHC Eng. (5380), w/Center Brg. - 1980
	2960 745	1	M5	w/159 W.B. w/440 Eng. (5380)
	3496 050	1	M5	w/159 W.B. w/440 Eng. (5380), w/Center Brg.
	4117 828	1	M5	w/159 W.B. w/IHC Eng. (5380), w/Center Brg.- 1979
	3733 746	1	M5	w/178 W.B. w/440 Eng. (5380)
	3733 747	1	M5	w/178 W.B. w/440 Eng. (5380), w/Center Brg.
	4112 991	1	M5	w/178 W.B. w/IHC Eng. (5380), w/Center Brg. - 1979
	4167 495	1	M5	w/178 W.B. w/IHC Eng. (5380), w/Center Brg. - 1980
8	152 345	4	M5	<b>NUT, Lock</b>
9	1930 010	1	M5	<b>YOKE, Trans. Brake Drum Flange (5380)</b>
	4130 832	1	M5	<b>YOKE, Trans. Output Shaft - 1980</b>
10		6	All	<b>BOLT, 7/16-14 x 1-1/4 (not serviced)</b>
11		6	All	<b>WASHER, 7/16 (not serviced)</b>
12		6	All	<b>NUT, 7/16-14 (not serviced)</b>
13	3621 457	1	All	<b>CENTER BEARING PACKAGE, w/Support and Insulator</b>
	3632 991	1	All	<b>BEARING w/GREASE RETAINER, Center P/Shaft</b>
14	3632 995	1	All	<b>RETAINER, Center Bearing Insulator</b>

**LIGHT** A = All Sport Utility (Ramcharger). B = All Compact Models. D = Conventional Cab.  
**DUTY** AD = 2 Wheel Drive Only (Ramcharger). CB-MB = Compact Front Section Only. W = Conventional Cab 4 Wheel Drive.  
**CODES:** AW = 4 Wheel Drive Only (Ramcharger). P = Forward Control Chassis. M = Motor Home.

**MEDIUM-HEAVY CODES:** XNT = Low Cab Forward. D = Conventional Cab. S = School Bus. W = 4-Wheel Drive.

AR=Use as Required

# = New Part Number

Printed in U.S.A.

June, 1982

# 1978-81 LIGHT DUTY TRUCK PARTS CATALOG

ITEM	PART NUMBER	QTY	MODEL	DESCRIPTION
------	-------------	-----	-------	-------------

**PROPELLER SHAFT, 2 PIECE  
 M3,4,5 (w/137,159,178 W.B.)**

15	3632 997	1	All	RETAINER, Center Bearing
16	3632 996	2	All	SLINGER, Center Bearing
17				TUBE, Propeller Shaft, Rear
	2832 363	1	M3	w/137 W.B. w/360,440 Eng. (5380) - 1978
	3733 750	1	M3	w/137 W.B., All Eng. (5380) - 1979-80
	2509 685	1	M4	w/137 W.B. w/360 Eng. (7260) - 1978
	3736 447	1	M4	w/137 W.B. w/360 Eng. (7260) - 1979-80
	2832 363	1	M4	w/137 W.B. w/440 Eng. (5380) - 1978
	3641 697	1	M4	w/159 W.B. w/360 Eng. (7260)
	3733 750	1	M4	w/159 W.B. w/440 Eng. (5380) - 1978
	3733 750	1	M5	w/159,178 W.B. W/440 Eng. (5380) - 1978
	3733 750	1	M4,5	All W.B., w/440 & IHC Eng. (5380) - 1979-80
18	1795 173	1	All	NUT, Rear Axle Yoke
19	1795 175	1	All	WASHER, Rear Axle Yoke
20				YOKE & SLINGER, Rear Axle
	4117 781	1	M4	(7260) 29 Spline
	4164 132	1	All	(5380) 29 Spline
	2910 945	1	All	YOKE ONLY, 29 Spline (5380)
	2952 469	1	All	SLINGER, (5380-7260)
21				YOKE, Sliding
	2237 264	1	All	w/2509685, 3641697 Tube, 16 Spline (7260)
	2832 393	1	All	w/2832363, 3733750 Tube, 16 Spline (5380)
22	9411 022	1	All	NIPPLE, Grease 1/8 Pipe
	9411 244	1	All	1/4-28
23				SEAL, Yoke Oil
	599 258	1	All	(7260), Up to 11-15-1978
	4117 049	1	All	(7260), After 11-15-1978
	563 099	1	All	(5380), Up to 11-15-1978
	4117 050	1	All	(5380), After 11-15-1978
24				CAP, Yoke Oil Seal
	4117 049	1	All	(7260)
	2832 395	1	All	(5380), Up To 11-15-1978
	4117 050	1	All	After, 11-15-1978
25				BRACKET, Center Bearing Mounting
	2960 657	1	All	w/137 W.B., Up to 3-15-78
	4115 021	1	All	From 3-15-78 to 1979
	4112 202	1	All	1979-80
	2955 018	1	All	w/159,178 W.B.

**LIGHT** A = All Sport Utility (Ramcharger). B = All Compact Models. D = Conventional Cab.  
**DUTY** AD = 2 Wheel Drive Only (Ramcharger). CB-MB = Compact Front Section Only. W = Conventional Cab 4 Wheel Drive.  
**CODES:** AW = 4 Wheel Drive Only (Ramcharger). P = Forward Control Chassis. M = Motor Home.

**MEDIUM-HEAVY CODES:** XNT = Low Cab Forward. D = Conventional Cab. S = School Bus. W = 4-Wheel Drive.

AR=Use as Required

# = New Part Number

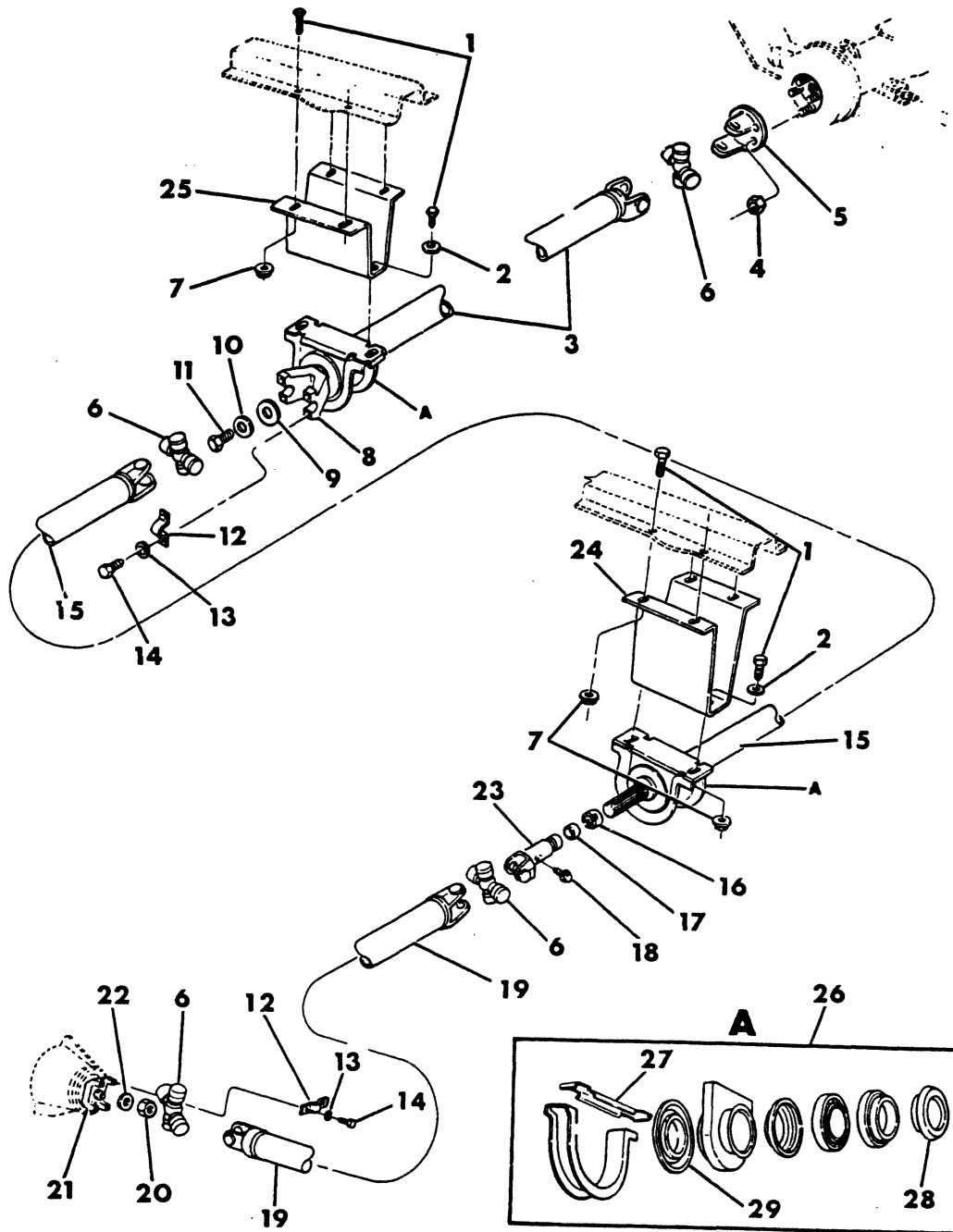
Printed in U.S.A.

June, 1982



8316 1100

## PROPELLER SHAFT, 3 PIECE, M6 (w/208" W.B.)



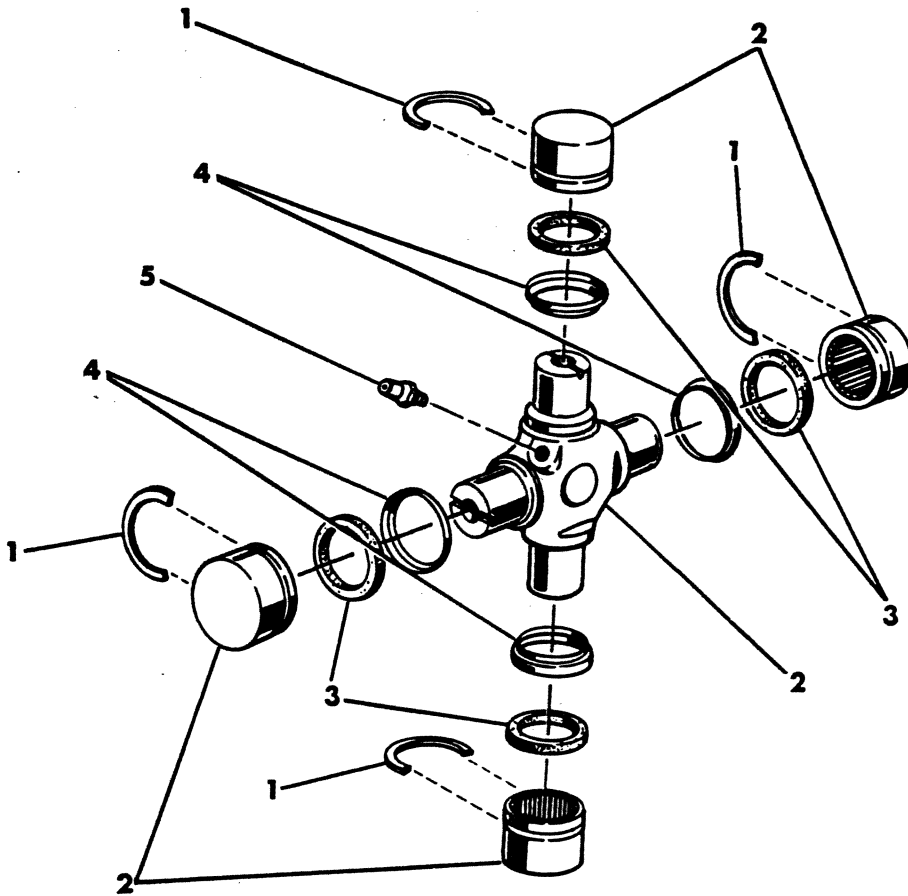


ITEM	PART NUMBER	QTY	MODEL	DESCRIPTION
<b>PROPELLER SHAFT, 3 PIECE, M6 (w/208" W.B.)</b>				
<b>NOTE: FOR CENTER BEARING, SEE INSERT A</b>				
1		12	All	BOLT, 7/16-14 x 1-1/4 (not serviced)
2		4	All	WASHER, Plain 7/16 (not serviced)
3	4030 280	1	All	TUBE, Propeller Shaft Front (5380)
	4030 244	1	All	w/Center Bearing
	4164 729	1	All	FRONT, w/Center Brg., w/228" W.B.
	4112 992	1	All	w/Center Bearing, w/IHC Engine
4	152 345	4	All	NUT, Lock
5	1930 010	1	All	YOKE, Trans. Brake Drum Flange
	4130 832	1	All	YOKE, Trans. Output Shaft - 1980
6	3780 272	AR	All	CROSS PACKAGE, Universal Joint (5380)- 1978-79
	4213 200	AR	All	(5380), w/Grease Fitting - 1980
7		12	All	NUT 7/16-14 (not serviced)
8	3004 660	1	All	YOKE, Frt. P/Shaft Ctr. Brg. - 1978-79
	1938 952	1	All	1980
	2240 668	1	All	YOKE PACKAGE
9		1	All	WASHER (not serviced)
10		1	All	WASHER (not serviced)
11	271 744	1	All	BOLT, Yoke Retaining
12	1939 414	4	All	CLAMP, U/Joint Cross Yoke (5380)
13		8	All	WASHER, Lock (not serviced)
14	1939 415	8	All	SCREW, Clamp Attaching
15	4030 283	1	All	TUBE, Propeller Shaft Intermediate (5380)
	4030 245	1	All	TUBE, P/Shaft Intermediate (5380) w/Ctr. Brg. -1980
16	2832 395	1	All	CAP, Yoke Oil Seal, Up To 11-15-1978
	4117 050	1	All	After 11-15-1978
17	563 099	1	All	SEAL, Yoke Oil, Up To 11-15-1978
	4117 050	1	All	After 11-15-1978
18	9411 022	1	All	NIPPLE, Grease 1/8 Pipe
	9411 244	1	All	1/4-28
19	2832 353	1	All	TUBE, Propeller Shaft Rear (5380)
20	3735 003	1	All	NUT, Rear Axle Yoke
21	4032 079	1	All	YOKE, Rear Axle
22	1390 355	1	All	WASHER, Rear Axle Yoke
23	2832 393	1	All	YOKE, Sliding, 16 Spline (5380)
24	4030 248	1	All	BRACKET, Center Bearing, Intermediate
25	4030 247	1	All	BRACKET, Center Bearing, Front
26	3621 457	2	All	CENTER BEARING PACKAGE, w/Support and Insulator
	3632 991	1	All	BEARING w/GREASE RETAINER, Center P/Shaft
27	3632 995	1	All	RETAINER, Center Bearing Insulator
28	3632 997	1	All	RETAINER, Center Bearing
29	3632 996	2	All	SLINGER, Center Bearing

<b>LIGHT</b>	A = All Sport Utility (Ramcharger).	B = All Compact Models.	D = Conventional Cab.
<b>DUTY</b>	AD = 2 Wheel Drive Only (Ramcharger).	CB-MB = Compact Front Section Only.	W = Conventional Cab 4 Wheel Drive.
<b>CODES:</b>	AW = 4 Wheel Drive Only (Ramcharger).	P = Forward Control Chassis.	M = Motor Home.
<b>MEDIUM-HEAVY CODES:</b>	XNT = Low Cab Forward.	D = Conventional Cab.	S = School Bus. W = 4-Wheel Drive.

8316 1700

UNIVERSAL JOINT IDENTIFICATION



# 1978-81 LIGHT DUTY TRUCK PARTS CATALOG

DESCRIPTION	SIZE/SERIES	SIZE/SERIES	SIZE/SERIES	SIZE/SERIES
	3.75/5380	2.875/7260	3.434/7290	2.97/1310

## UNIVERSAL JOINT IDENTIFICATION

1	RETAINER	AR	3893 478	858 006	858 006	
	w/Pull Tab	AR	3893 479		2781 923	
2	CROSS PACKAGE, Universal Joint (1-5)					
	w/o Grease Fitting	AR	3780272	3780250	4057025	3827046
	w/Grease Fitting	AR	4213200	3004900	3634563	
	Constant Velocity (3.375)	AR		4030848		
3	SEAL, Dust	AR		857999		
4	RETAINER, Dust Seal	AR		1739912		
5	FITTING, Grease					
	1/8 Pipe	AR	9411022	9411022	9411022	
	1/4-28	AR	9411244	9411244	9411244	
	10-32 Flush Head	AR	2232011	2232011	2232011	
	CLAMP (not shown)	AR	1939414	1828824	2781904	1122683
	SCREW, Clamp	AR	1939415	6029562	6029562	
	NUT, Clamp	AR				143438

<b>LIGHT</b>	A = All Sport Utility (Ramcharger).	B = All Compact Models.	D = Conventional Cab.
<b>DUTY</b>	AD = 2 Wheel Drive Only (Ramcharger).	CB-MB = Compact Front Section Only.	W = Conventional Cab 4 Wheel Drive.
<b>CODES:</b>	AW = 4 Wheel Drive Only (Ramcharger).	P = Forward Control Chassis.	M = Motor Home.

**MEDIUM-HEAVY CODES:** XNT = Low Cab Forward. D = Conventional Cab. S = School Bus. W = 4-Wheel Drive.

AR=Use as Required

# = New Part Number

Printed in U.S.A.

June, 1982

