

PAGE NUMBERING

Two-part page numbers are used throughout this catalog. The first part of the page designation indicates the major group or section. The second part indicates the actual page number in the group. For example:

- 1-1 indicates Group 1, Accessories, Page 1
- 2-1 indicates Group 2, Front Suspension, Page 1

In the maintenance of the Loose Leaf Parts Catalog Revision Service, it may become necessary to add information beyond the capacity of the page. In this event, an "A" page will be used. For example: If it becomes necessary, because of change, to add several part numbers to page 2-1 and space does not permit the addition, you will be given Page 2-1A. Page 2-1A should be filed immediately following page 2-1.

SYMBOLS USED IN THIS PARTS CATALOG

The following symbols are used in the Parts Catalog and revisions thereto:

(#) Preceding a part number indicates parts which have been added and not previously published.

AR - In the "Model Code" column means "Use as Required".

SPECIFYING INFORMATION

The following information is included in this Parts Catalog:

1. Part Type Code or illus Number Ref. (See Illustrations Inf. Section)
2. Part Name
3. Part Number
4. Model Application
5. Quantity used per vehicle
6. Effective points of series running changes by vehicle serial number, engine number and body number where applicable. When Serial Number effective points are not available, production dates are used.
7. Description and dimensions necessary for proper identification of parts where necessary.
8. Parts not previously listed in the Parts Catalog are designated by a (#) symbol preceding the part number.
9. No. of Cyl. column
6 indicates 6 cylinder models
8 indicates 8 cylinder models
Blank indicates both models
10. Parts designated as CANADA are available only in Canada for vehicles sold in Canada.

NUMERICAL INDEX

Reference to any part by part number is provided in the Numerical Index.

—NOTICE—

Indexing under the REF. heading is in two styles.

I. PART TYPE CODE

Indicates data that is found in the historically employed text format; e.g., 19-48-12. This reference is interpreted as:

19	48	12
GROUP	Major Code	Minor Code

II. ILLUSTRATION/LEGEND PAGE

Indicates data located in a Group which has been converted to the new format and which has been added to

computer files; e.g.: 24/1000/4. This reference is interpreted as:

24	/	1000	/	4
Group		Figure Number (Illustration)		Item Number

Currently, Group 9S = 6 Cylinder Engine and 21M = Manual Transmission

As additional Illustration/Legend data is added to computer files, the part numbers contained therein will be merged into this NU Index.

ILLUSTRATION INDEX

The first page of each group contains a listing of all illustrations within that group.

ALPHABETICAL INDEX

To locate a part by name, refer to the Alphabetical Index. This index indicates the group and illustration and item number where the part is located.

STANDARD PARTS

Standard Parts such as bolts, nuts, etc., are generally listed with the major parts which they attach. Standard Parts listed as Major Parts, such as fuses, bulbs, and bearings in the 100,000 - 499,999 and 9,000,000 part number series are assigned a parts group and listed within the group.

A comprehensive listing and description of the commonly used and serviced Standard Parts will be found in Group 18.

PRODUCT BULLETINS

Use of the PRODUCT BULLETINS assures each catalog subscriber up to date information. All catalogs should be noted and changed accordingly to remain current between revisions.

PRODUCT BULLETINS are issued when important changes are made in production or when corrections are to be made in the Parts Catalog between regular revisions.

PARTS CATALOG REVISION SERVICE

Subscribers to the Dodge Truck Parts Catalog Revision Service will be periodically provided with revised copy incorporating latest information. Revision may be provided by Group or complete book copy.

Proper interfiling of the revised copy will insure the subscriber a complete up-to-date Parts Catalog.

Accompanying each mailing of a set of revision copy is a covering letter which outlines the contents of the particular revision. It is recommended that the letter be read carefully to avoid elimination of copy which is still current.

VEHICLE MODEL CHART 1978
DODGE TRUCK — CHASSIS AND BODY MODEL CHART

MODEL	WHEELBASE	ENGINES		BODY CODE								
		DSL	GAS	1	2	3	4	5	6	7	8	9
COMPACT — VANS												
B1	109-127		6-8	1								
B2	109-127		6-8	1				5				
B3	109-127		6-8	1				5				
COMPACT — WAGONS (DODGE & PLYMOUTH)												
B1-PB1	109-127		6-8		2							
B2-PB2	109		6-8		2							
B2-PB2	127		6-8		2				6			
B3-PB3	127		6-8		2				6			
COMPACT — FRONT SECTION VEHICLES (14)												
MB3	109		6-8			3	4					
MB3	127		6-8			3	4					
MB4	127-145		6-8				4					
CB3	109		6-8									
CB3	127		6-8									
CB4	145		6-8									
CONVENTIONAL CAB												
D1	115-131		6-8	1		3	4					
D150	115-131	6	6-8	1		3	4					
D2	131	6	6-8	1		3	4					
RD2	131		6-8			3	4					
D3	131		6-8									
D3	135		6-8	1								
D3	159		6-8	1								
D5	133-157-175		6-8	1								
D5	157-175		6-8	1							7	
D5	157-175		6-8	1							7	
D6	133-145-157-175-181-197-211-221		6-8	1								7
D6	157-175-197-221-240		6-8	1								7
D7	133-145-157-175-181-197-211-221		6-8	1								
D8	133-145-157-175-181-197-211		6-8	1		3	4					
W1	115-131		6-8									
W150	115-131	6	6-8	1		3	4					
W2	131	6	6-8	1								
W3	135		6-8	1								
W4	135		6-8	1								
WM3	126		6-8								7	
W6	157-175		6-8	1								
CREW CAB												
D2	149	6	6-8		2			5	6			
D2	165	6	6-8		2			5	6			
D3	165	—	6-8		2							
W2	149	6	6-8		2			5	6			
CLUB CAB												
D1	133-149	6	6-8								7	
D2	149	6	6-8								7	
RD2	149		6-8									9
D3	149		6-8								7	8
W1	133-149		6-8								7	
W150	133-149	6	6-8								7	
W2	149	6	6-8								7	
SPORT UTILITY (DODGE & PLYMOUTH)												
AD1-PD1	106		6-8	1								
AW1-PW1	106		6-8	1								
LCF CAB												
XNT9	146,222		6-8	1								
FORWARD CONTROL CHASSIS												
P3	137		6									
SCHOOL BUS												
S6	(20)157-(20)175-197-221-240-258		8								7	
S7	240-258-279		8								7	
MOTOR HOME												
M3	104		8									
M3	125		8									
M4	137-159		8									
M5	137-159-178		8									
M6	208		8									

1978 — TRUCK BODY STYLE

- 1. - Tradesman Van, Cab & Chassis — Truck Type Vehicles*, Sport Utility
- 2. - Sportsman, Crew Cab, and Chassis
- 3. - Conv. Cab with Utiline, MB300 Low Line.
- 4. - Conv. Cab with Sweptline, MB300 High Line.

- 5. - Tradesman Van — Extended Body, Crew Cab w/Utiline
- 6. - Sportsman — Extended Body, Crew Cab w/Sweptline
- 7. - Flat Face Cowl, Club Cab with Sweptline.
- 8. - W/S Cowl, Club Cab, and Chassis.
- 9. - Club Cab and Utiline.

1979-80 MODEL CHART
 DODGE TRUCK - CHASSIS AND BODY MODEL CHART.

MODELS	WHEELBASE	ENGINES	BODY CODE								
			1	2	3	4	5	6	7	8	9
COMPACT - VANS											
B1 B2 B3	109-127 109-127 109-127	225-1, 318-1, MMC (21)225-1 , 318-1, 360-1, MMC (18)225-1, (19)318-1, 360-1, (19) MMC	1 1 1						5 5		
COMPACT - WAGONS (DODGE & PLYMOUTH)											
B1-PB1 B2-PB2 B2-PB2 B3-PB3	109-127 109 127 127	225-1, 318-1, MMC (21)225-1 , 318-1, 360-1, MMC (21)225-1 , 318-1, 360-1, MMC 318-1, 360-1, MMC		2 2 2						6 6	
COMPACT - FRONT SECTION VEHICLES (14)											
MB3 MB3 MB4 MB4 CB3 CB3 CB3 CB4	109 127 127-146 163 109 127 145 163	360-1 360-1, 440-1 360-1, 440-1 360-3, 440-3 (18)(11)225-1 , (11)318-1, 360-1 (21)225-1 , (11)318-1, 360-1 (21)225-1 , (11)318-1, 360-1 360-3				3 3 3	4 4 4				
CONVENTIONAL CAB											
D1 D15 D2 RD2 D3 D3 D3 D4 D6 D6 D8 W16 W2 W3 W4 WK3 W8	115-131 115-131 131 131 131 135 159 135-159 157-175 157-175-197-221 157-175-197 115-131 131 135 145 126 157-175	225-1, 318-1, MMC 318-1, 360-1, MMC (17) (18)225-1, 318-1, 360-1, MMC (17) 360-1 (21)225-1 , (11)318-1, 360-1 (21)225-1 , (11)318-1, 360-1 (21)225-1 , (11)318-1, 360-1 360-1 225-2, 318-3, 360-3 318-3, 360-3, 6-354 413-3 225-1, 318-1, 360-1, MMC (17) (21)(18)225-1 , 318-1, 360-1, MMC (17) (21)225-1 , 111318-1, 360-1 360-1 225-2 318-3, 360-3	1 1 1 1 1 1 1 1 1 1 1 1 1 1 1 1 1 1 1	(2) 1 (2) 1 (2) 1 3 3 3 3 3 3 3 3 3 3 3 3							4 4 4 4 4 4 4 4 4 4 4 4 4 4 4 4
CREW CAB											
D2 RD2 D3 W2	149-166 149 165 149	(11)(18)225-1, 318-1, 360-1, (18), MMC 360-1 (11)318-1, 360-1 (11)(18)225-1, 318-1, 360-1					2 2 2	(2) 1 (2) 1 (2) 1		5	6 6 6
CLUB CAB											
D15 D2 RD2 D3 W16 W2	133-149 149 149 149 133-149 149	225-1, 318-1, 360-1, MMC (17) (18)225-1, 318-1, 360-1, MMC (17) 360-1 (11)318-1, 360-1 (11)(18)225-1, 318-1, 360-1, MMC (17) (11)(18)225-1, 318-1, 360-1									7 7 7 7 7 7 8 9
SPORT UTILITY (DODGE & PLYMOUTH)											
AD1-PD1 AW1-PW1	106 106	225-1, 318-1, 360-1 318-1, 360-1	1 1								
LCF CAB											
XNT9	146, 222	NHC - 250	1								
SUB-COMPACT PICKUP											
SP27	109	2000 CC 2800 CC						4			
SCHOOL BUS											
S6 S7	157-175-197-221-240-258 240-258	318-3, 360-3, 6-354 360-3, 413-3									7 7
MOTOR HOME											
(20) M3 M4 M5 M6	125-137 137-159 159-178 228	360-3 360-3, 440-3 440-3 440-3									

1979 TRUCK BODY CODE

- 1 - 00000 Van, Cab & Chassis - Truck Type Vehicles, Sport Utility.
- 2 - Sportman, Crew Cab and Chassis.
- 3 - Conv. Cab with Utiline, MB300 Low Line.
- 4 - Conv. Cab with Swepline, MB300 High Line.
- 5 - 00000 Van - Extended Body, Crew Cab W/Utiline.
- 6 - Sportman - Extended Body Crew Cab W/Swepline.
- 7 - Flag Face Cowl, Club Cab with Swepline.
- 8 - W/S Cowl, Club Cab, and Chassis.
- 9 - Club Cab and Utiline

1981 DOMESTIC TRUCK, MULTIPURPOSE VEHICLE, BUS, AND INCOMPLETE VEHICLES VEHICLE IDENTIFICATION NO.

POSITION	1	2	3	4	5	6
	1st POSITION	2nd POSITION	3rd POSITION	4th POSITION	5th POSITION	6th POSITION
	COUNTRY	MAKE	VEHICLE TYPE	OTHER	LINE	SERIES
	1 - Built in U.S. 2 - Built in Can.	B - Dodge E - Fargo P - Plymouth	4 - Multipurpose Passenger Vehicle (MPV) 5 - Bus 6 - Incomplete Vehicle 7 - Truck	TRUCK or MPV WITH HYDRAULIC BRAKES D - 1 - 3000 E - 3001 - 4000 F - 4001 - 5000 G - 5001 - 6000 H - 6001 - 7000 J - 7001 - 8000 K - 8001 - 9000 L - 9001 - 10000 M - 10001 - 14000 N - 14001 - 16000 P - 16001 - 19000 R - 19001 - 26000 S - 26001 - 33000 T - 33001 & Above BUSES OR INCOMPLETE VEHICLES WITH HYDRAULIC BRAKES W	TRUCK B - Ram Van C - Ram Kary Van D - Ram Pickup 4 x 2 W - Power Ram Pickup 4 x 4 R - Railarama MPV B - Dodge Ram Wagon/Van Plymouth Voyager Wagon/Van D - Dodge Ramcharter 4 x 2 Plymouth Trailduster 4 x 2 W - Dodge Ramcharger 4 x 4 Plymouth Trailduster 4 x 4 BUS B - Dodge Ram Wagon Plymouth Voyager Wagon INCOMPLETE VEHICLE D - Ram Chassis Cab 4 x 2 W - Power Ram Chassis 4 x 4 C - Ram Commercial Front Section F - Ram Motor Home Front Section H - Ram Motor Home Chassis B - Ram Motor Wagon/Van R - Railarama	1 - 150 Job Rated Series 2 - 250 " " " 3 - 350 " " " 4 - 450 " " " 5 - 550 " " " 6 - 650 " " " 7 - 750 " " " 8 - 850 " " " 9 - 950 " " "

POSITION	7	8	9	10	11	12-17
	7th POSITION	8th POSITION	9th POSITION	10th POSITION	11th POSITION	12th thru 17th POSITION
	BODY STYLE	ENGINE**	CHK DIGIT***	MODEL YEAR	ASSY PLANT	SEQUENCE NO.
	1 - Wagon 2 - Sport Utility 3 - Van 4 - Conventional Cab 5 - Club Cab 6 - Crew Cab 7 - Stripped Chassis 8 - Front Section	E - 3.7 L gas 1 bbl S.D. P - 5.2 L gas 2 bbl S.D. R - 5.2 L gas 4 bbl H.D. S - 5.9 L gas 2 bbl S.D. T - 5.9 L gas 4 bbl S.D. U - 5.9 L gas 4 bbl H.D. (Single Exhaust) V - 5.9 L gas 4 bbl H.D. (Dual Exhaust)	0 1 2 3 4 5 6 7 8 9 X	A - 1980 B - 81 C - 82 D - 83 E - 84 F - 85 G - 86 H - 87 J - 88 K - 89 L - 1990 M - 91 N - 92 P - 93 R - 94 S - 95 T - 96 V - 97 W - 98 X - 99 Y - 2000 1 - 01	U.S. A - Lynch Road C - Jefferson D - Belvidere F - Newark G - St. Louis S - Warren # 1 T - Warren # 2 V - Warren # 3 X - Missouri CANADA J - Tecumseh Assy K - Pillette R - Windsor	START WITH 100001 EXCEPT WARREN # 2 START WITH 500001 WARREN # 1 START WITH 700001

● **EQUIPMENT IDENTIFICATION PLATE**

The equipment identification plate as shown in Figure 2, contains information regarding the vehicle: model, wheelbase, V.I.N. (Vehicle Identification Number), T.O.N. (Truck Order Number), and all production or special equipment on the vehicle when it was shipped from the factory. ALWAYS REFER TO THIS PLATE WHEN ORDERING PARTS. The location of the equipment identification plate for the Models is listed below.

EQUIPMENT IDENTIFICATION			
CODE NO.	DESCRIPTION	CODE NO.	DESCRIPTION

IF SPECIAL EQUIPMENT (IDENTIFIED BY 6 DIGIT CODE NO.) AFFECTS REPLACEMENT PARTS, INCLUDE "S" EQUIPMENT GROUP AND SPECIAL EQUIPMENT CODE NO. ON PARTS ORDER. **IMPORTANT - RETAIN THIS PLATE AS A PERMANENT RECORD**

MODEL REFERENCE	LOCATION ON VEHICLE
Conventional Cab	Hood Inner Surface
Conventional Cowl	Hood Inner Surface
Forward Control	Refer to Body Builder
Sport Utilities	Hood Inner Surface

● **VEHICLE IDENTIFICATION PLATE**

The vehicle identification plate as shown is attached to the Driver's Side Door Body Latch Post on all Models.

Vehicle Identification Plate

No. Cyl.	Cubic Inch Displacement	Engine Serial Location	Parts Replacement Information Location
6	225 cu. in.	Right side of block below #1 spark plug	Right side of block below #1 spark plug
8	318 cu. in.	Left front of block below cylinder head	Left front of block with engine number
8	360 cu. in.	Left front of block below cylinder head	Left front of block with engine number

● **VEHICLE CERTIFICATION LABEL**

The vehicle certification label, is located on the door opening side of the "B" post. The label includes an MDH number (Month, Day, Hour) build date. Use this label information when reporting deficiency conditions.

Vehicle Emission Control Information Label for sale and use in the United States are required to comply with the Federal Government's Exterior Noise Regulations. These vehicles can be identified by the Noise Emissions Control Label located in the operator's compartment.

Vehicle Certification Label

ENGINE IDENTIFICATION

The following chart and Figures 4, 5, 6, 7 and 8 describe location of engine serial number and parts replacement information.

No. Cyl.	Cubic Inch Displacement	Engine Serial Number Location	Parts Replacement Information Location
6	225 cu. in.	Right side of block below #1 spark plug	Right side of block below #1 spark plug
8	243 cu. in. **	Left side of block below #6 cylinder	Forward side of engine mounting bracket below injector pump
8	318 cu. in.	Left front of block below cylinder head	Left front of block with engine number
8	360 cu. in.	Left front of block below cylinder head	Left front of block with engine number
8	400 cu. in.	Right side of block adjacent to #2 cylinder bore	Right side of block adjacent to #2 cylinder bore
8	440 cu. in.	Left side of block adjacent to front tappet rail	Left side of block adjacent to front tappet rail

*Note: Any light duty truck engine used with a catalytic converter must use unleaded fuel.

**The 243 Diesel engine must use diesel fuel.

DETERMINE ENGINE IDENTIFICATION

225 Cubic Inch Engine

The 225 cubic inch engine assembly will carry an identification number as follows:

The first letter will designate the model year, (8).

The three numbers following the model year indicate the cubic inch displacement, (225).

The letter following the engine displacement designates the engine usage, (T)-Truck (LC)-Low Compression.

The numbers following the engine usage designate the shift built.

The four numbers following the shift built designate the build date. The first two digits designate the month and the last two digits designate the day of the month.

The letter or character following the build date indicates oversize or undersize component parts.

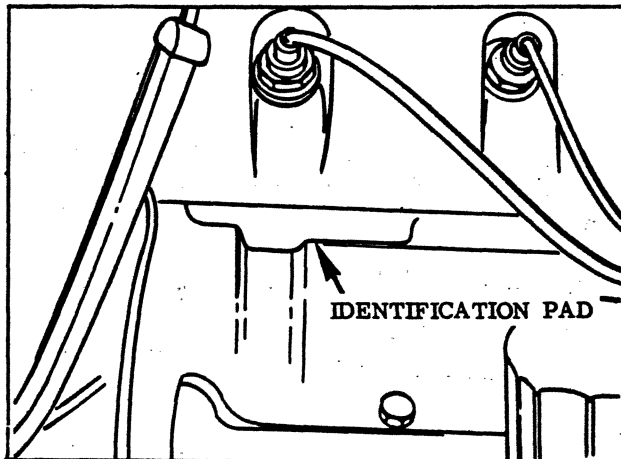
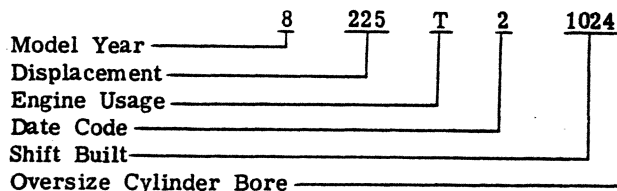


Fig. 4 - 225 Cubic Inch Engine Identification Location

225 ENGINE SERIAL NUMBER EXAMPLE



318 and 360 Cubic Inch Engines

The following identification will be included on engine serial number pad on 318 and 360 cubic engines.

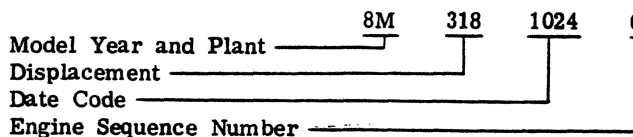
The first letter will designate the model year and second letter the manufacturing plant, (8M-Mound 1 318 CID Engine), (8W-Windsor 360 CID Engine).

The three numbers following the plant identification indicate the cubic inch displacement, (318-360).

The four numbers following the engine cubic displacement designate the build date. The first digits designate the month and the second two digits designate the day of the month.

The last four numbers (optional) following the build date are engine sequence numbers built that day.

318 and 360 ENGINE SERIAL NUMBER EXAMPLE



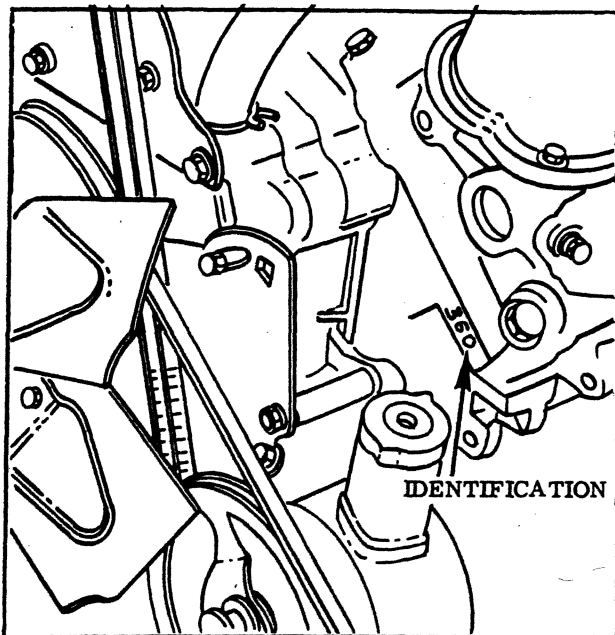


Fig. 5 - 318 and 360 Cubic Inch Engine Identification Location

400 and 440 Cubic Inch Engines

The 400 and 440 cubic inch engine assemblies will carry an identification number as follows:

The first letter will designate the model year and the second letter the manufacturing plant, (8t-Trenton).

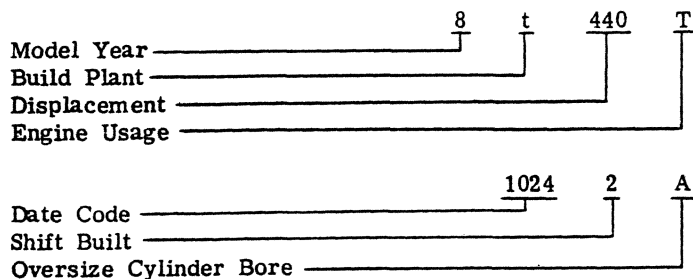
The three numbers following the plant identification indicate the cubic inch displacement, (400 and 440).

The letter following the engine displacement designates the engine model, (T-Truck), (LC-Low Compression).

The four numbers starting the second line designate the build date. The first two digits designate the month and the last two digits designate the day of the month.

The number following the build date designates the shift built. The letter or character following the shift built indicates oversize or undersize component parts.

400 AND 440 ENGINE SERIAL NUMBER EXAMPLE



TRANSMISSION IDENTIFICATION

Specific vehicles referred to in this manual can be identified as to Part Number, Model, and Build Date by information supplied on the Transmission Identification Tag.

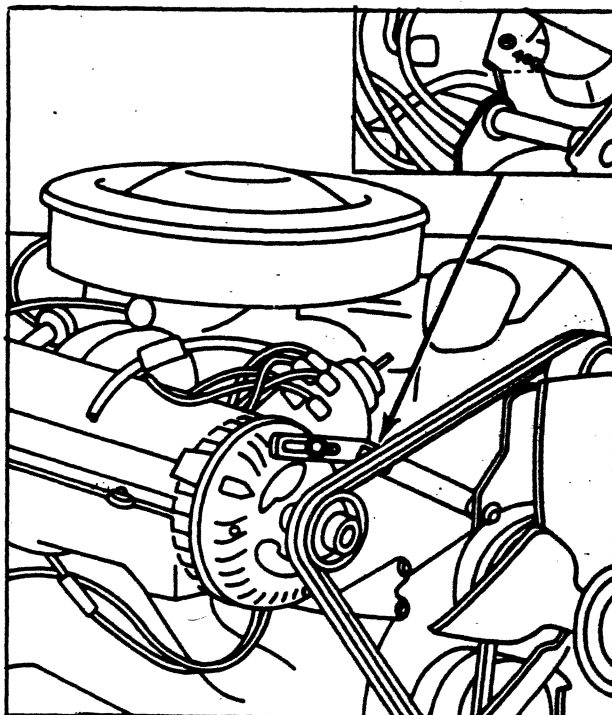


Fig. 6 - 400 Cubic Inch Engine Identification Location

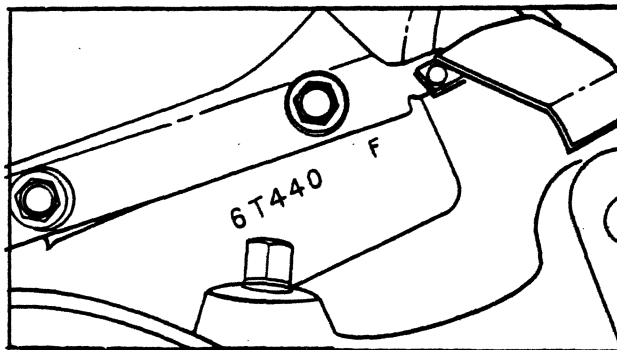


Fig. 7 - 440 Cubic Inch Engine Identification Location

Operation requirements are, in some instances, different for each vehicle and engine combination and some internal parts will be different to provide for this. Therefore, when replacing parts, refer to the number stamped on left side of the transmission oil pan flange.

See Group 21 of this Manual for additional information.

For manual transmissions, an aluminum Identification Tag has been provided and is secured by two bolts to the power take-off cover. Do not discard this tag in the event transmission power take-off cover is removed. On other transmission models, a blue metal Identification Tag is permanently attached to the left side of transmission case at the top near the case cover.

For automatic transmissions, a surface pad has been provided on the right side of the transmission case to supply identification.

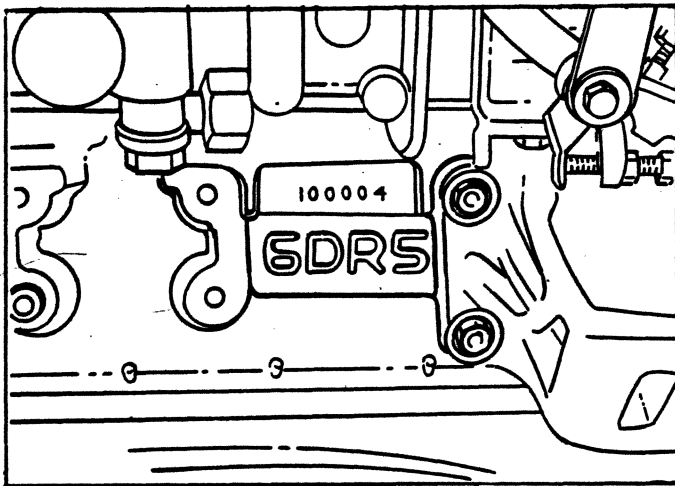


Fig. 8 — 243 Cubic Inch Diesel Engine Identification Location

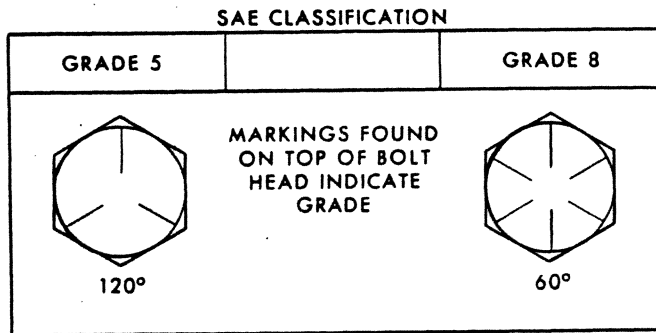


Fig. 9 — Bolt Head Identification

TORQUE REFERENCES

Head marking identification shall consist of lines on the top of the bolt head (Fig. 9).

BOLT TORQUE

Size	GRADE 5		GRADE 8	
	Ft-Lb	Newton Metres	Ft-Lb	Newton Metres
1/4-20	95 In-Lb	10.7	125 In-Lb	14.0
5/16-18	95 In-Lb	10.7	150 In-Lb	16.8
1/4-28	200 In-Lb	22.6	270 In-Lb	29.8
5/16-24	20	27.1	25	27.1
3/8-16	30	40.7	40	40.7
3/8-24	35	47.5	45	47.5
7/16-14	50	67.8	65	67.8
7/16-20	55	74.6	70	74.6
1/2-13	75	101.7	100	101.7
1/2-20	85	115.2	110	115.2
9/16-12	105	142.4	135	142.4
9/16-18	150	156.0	150	156.0
5/8-11	115	203.4	195	203.4
5/8-18	160	217.0	210	217.0
3/4-16	175	237.3	225	237.3

**ENGINE CODE
1981 TRUCK**

ENGINE CODES																
CALIFORNIA & BUX				49 STATES & BUX					CANADA					BUX		
225-1	318-1	360-1	360-3	225-1	318-1	318-1	360-1	360-3	225-1	318-1	318-1	360-1	360-1	360-3	225-1	318-1
1V	4V	4V	4V	1V	2V	4V	4V	4V	1V	2V	4V	2V	4V	4V	1V	2V
EA3	EC2	EC5	EC9	EA3	EC1	EC2	EC5	EC9	EA3	EC1	EC2	EC4	EC5	EC9	EA3	EC1
HGN																

EA3225-1
EC2318-1
EC5360-1
EC9360-3

EA3225-1
EC1318-1
EC2318-1
EC5360-1
EC9360-3

EA3225-1
EC1318-1
EC2318-1
EC4360-1
EC5360-1
EC9360-3

EA3225-1
EC1318-1
EC5360-1
EC2318-1

CHRYSLER BUILT MANUAL TRANSMISSION IDENTIFICATION

The Identification is Located on the Right Front Side of the Transmission Case and consists of Four Elements.

PLANT CODE

PP = New Process
PK = Kokomo

TRANSMISSION MODEL

BUILD DATE CODE

Based on 10,000 Day
Calendar.
See Correlation Table

SEQUENCE NUMBER

Begins with 0001
for each Days
Production.

CHRYSLER BUILT AUTOMATIC TRANSMISSION IDENTIFICATION

The Identification is Located on the Oil Pan Mounting Rail on the Lower Left Side adjacent to the Transmission Throttle Valve Housing and consists of Four Elements.

PLANT CODE

PK = Kokomo

PART NUMBER

Ex. 2953 688

BUILD DATE CODE

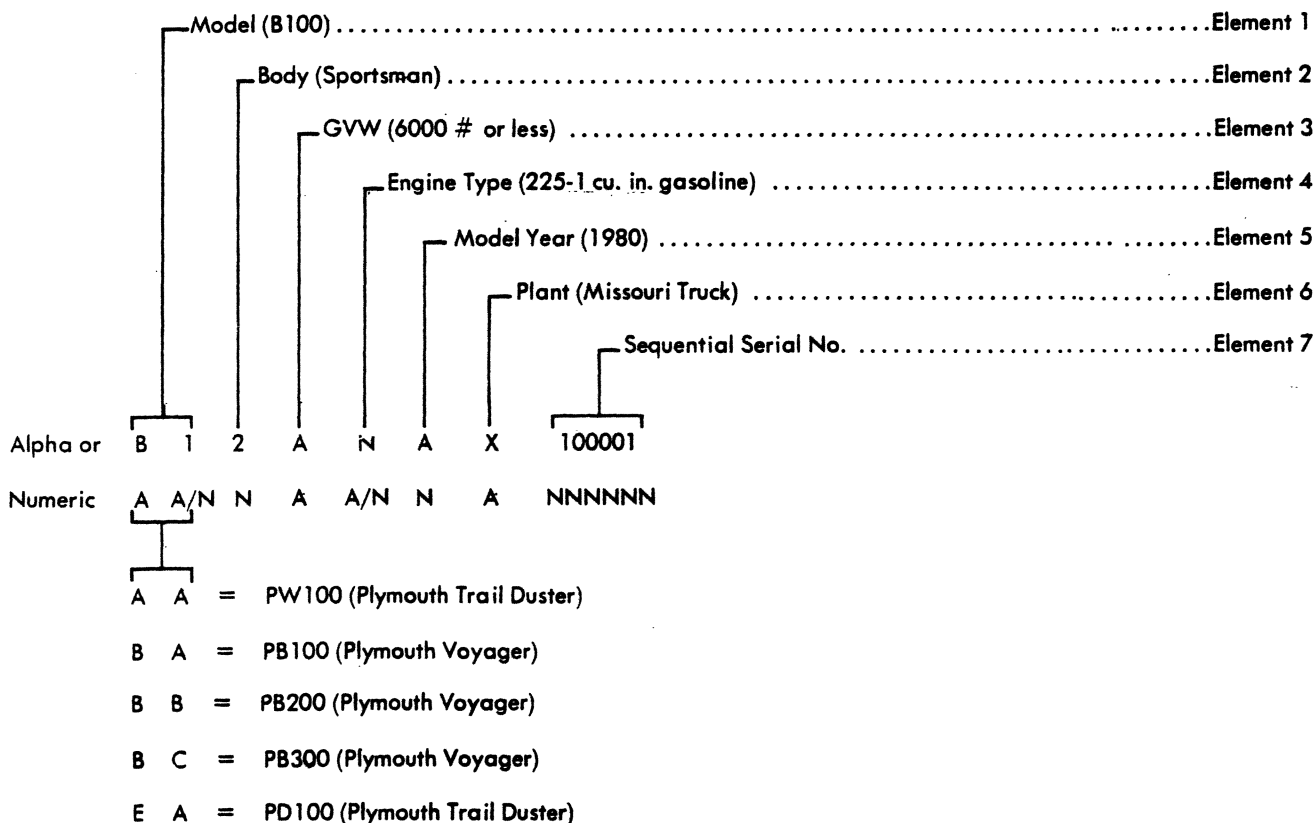
Based on 10,000 Day
Calendar
See Correlation Table

SEQUENCE NUMBER

Begins with 0001
for each Days
Production.

DOMESTIC TRUCKS

EXHIBIT # 1



NOTE: For 1979 M Models built in 1980 model year will have serial No. 500001 thru 509999. Use 1979 material when ordering parts for M3, M4, M5, M6 models.

10000 DAY DATE CORRELATION TABLES

1978 DAY NUMBER

DATE	JAN.	FEB.	MAR.	APR.	MAY	JUNE	JULY	AUG.	SEP.	OCT.	NOV.	DEC.
1	6001	6032	6060	6091	6121	6152	6182	6213	6244	6274	6305	6335
2	6002	6033	6061	6092	6122	6153	6183	6214	6245	6275	6306	6336
3	6003	6034	6062	6093	6123	6154	6184	6215	6246	6276	6307	6337
4	6004	6035	6063	6094	6124	6155	6185	6216	6247	6277	6308	6338
5	6005	6036	6064	6095	6125	6156	6186	6217	6248	6278	6309	6339
6	6006	6037	6065	6096	6126	6157	6187	6218	6249	6279	6310	6340
7	6007	6038	6066	6097	6127	6158	6188	6219	6250	6280	6311	6341
8	6008	6039	6067	6098	6128	6159	6189	6220	6251	6281	6312	6342
9	6009	6040	6068	6099	6129	6160	6190	6221	6252	6282	6313	6343
10	6010	6041	6069	6100	6130	6161	6191	6222	6253	6283	6314	6344
11	6011	6042	6070	6101	6131	6162	6192	6223	6254	6284	6315	6345
12	6012	6043	6071	6102	6132	6163	6193	6224	6255	6285	6316	6346
13	6013	6044	6072	6103	6133	6164	6194	6225	6256	6286	6317	6347
14	6014	6045	6073	6104	6134	6165	6195	6226	6257	6287	6318	6348
15	6015	6046	6074	6105	6135	6166	6196	6227	6258	6288	6319	6349
16	6016	6047	6075	6106	6136	6167	6197	6228	6259	6289	6320	6350
17	6017	6048	6076	6107	6137	6168	6198	6229	6260	6290	6321	6351
18	6018	6049	6077	6108	6138	6169	6199	6230	6261	6291	6322	6352
19	6019	6050	6078	6109	6139	6170	6200	6231	6262	6292	6323	6353
20	6020	6051	6079	6110	6140	6171	6201	6232	6263	6293	6324	6354
21	6021	6052	6080	6111	6141	6172	6202	6233	6264	6294	6325	6355
22	6022	6053	6081	6112	6142	6173	6203	6234	6265	6295	6326	6356
23	6023	6054	6082	6113	6143	6174	6204	6235	6266	6296	6327	6357
24	6024	6055	6083	6114	6144	6175	6205	6236	6267	6297	6328	6358
25	6025	6056	6084	6115	6145	6176	6206	6237	6268	6298	6329	6359
26	6026	6057	6085	6116	6146	6177	6207	6238	6269	6299	6330	6360
27	6027	6058	6086	6117	6147	6178	6208	6239	6270	6300	6331	6361
28	6028	6059	6087	6118	6148	6179	6209	6240	6271	6301	6332	6362
29	6029		6088	6119	6149	6180	6210	6241	6272	6302	6333	6363
30	6030		6089	6120	6150	6181	6211	6242	6273	6303	6334	6364
31	6031		6090		6151		6212	6243		6304		6365

1979 DAY NUMBER

DATE	JAN.	FEB.	MAR.	APR.	MAY	JUNE	JULY	AUG.	SEP.	OCT.	NOV.	DEC.
1	6366	6397	6425	6456	6486	6517	6547	6578	6609	6639	6670	6700
2	6367	6398	6426	6457	6487	6518	6548	6579	6610	6640	6671	6701
3	6368	6399	6427	6458	6488	6519	6549	6580	6611	6641	6672	6702
4	6369	6400	6428	6459	6489	6520	6550	6581	6612	6642	6673	6703
5	6370	6401	6429	6460	6490	6521	6551	6582	6613	6643	6674	6704
6	6371	6402	6430	6461	6491	6522	6552	6583	6614	6644	6675	6705
7	6372	6403	6431	6462	6492	6523	6553	6584	6615	6645	6676	6706
8	6373	6404	6432	6463	6493	6524	6554	6585	6616	6646	6677	6707
9	6374	6405	6433	6464	6494	6525	6555	6586	6617	6647	6678	6708
10	6375	6406	6434	6465	6495	6526	6556	6587	6618	6648	6679	6709
11	6376	6407	6435	6466	6496	6527	6557	6588	6619	6649	6680	6710
12	6377	6408	6436	6467	6497	6528	6558	6589	6620	6650	6681	6711
13	6378	6409	6437	6468	6498	6529	6559	6590	6621	6651	6682	6712
14	6379	6410	6438	6469	6499	6530	6560	6591	6622	6652	6683	6713
15	6380	6411	6439	6470	6500	6531	6561	6592	6623	6653	6684	6714
16	6381	6412	6440	6471	6501	6532	6562	6593	6624	6654	6685	6715
17	6382	6413	6441	6472	6502	6533	6563	6594	6625	6655	6686	6716
18	6383	6414	6442	6473	6503	6534	6564	6595	6626	6656	6687	6717
19	6384	6415	6443	6474	6504	6535	6565	6596	6627	6657	6688	6718
20	6385	6416	6444	6475	6505	6536	6566	6597	6628	6658	6689	6719
21	6386	6417	6445	6476	6506	6537	6567	6598	6629	6659	6690	6720
22	6387	6418	6446	6477	6507	6538	6568	6599	6630	6660	6691	6721
23	6388	6419	6447	6478	6508	6539	6569	6600	6631	6661	6692	6722
24	6389	6420	6448	6479	6509	6540	6570	6601	6632	6662	6693	6723
25	6390	6421	6449	6480	6510	6541	6571	6602	6633	6663	6694	6724
26	6391	6422	6450	6481	6511	6542	6572	6603	6634	6664	6695	6725
27	6392	6423	6451	6482	6512	6543	6573	6604	6635	6665	6696	6726
28	6393	6424	6452	6483	6513	6544	6574	6605	6636	6666	6697	6727
29	6394		6453	6484	6514	6545	6575	6606	6637	6667	6698	6728
30	6395		6454	6485	6515	6546	6576	6607	6638	6668	6699	6729
31	6396		6455		6516		6577	6608		6669		6730

10.000 Day Date Correlation Tables

1980 DAY NUMBER

DATE	JAN.	FEB.	MAR.	APR.	MAY	JUNE	JULY	AUG.	SEP.	OCT.	NOV.	DEC.
1	6731	6762	6791	6822	6852	6883	6913	6944	6975	7005	7036	7066
2	6732	6763	6792	6823	6853	6884	6914	6945	6976	7006	7037	7067
3	6733	6764	6793	6824	6854	6885	6915	6946	6977	7007	7038	7068
4	6734	6765	6794	6825	6855	6886	6916	6947	6978	7008	7039	7069
5	6735	6766	6795	6826	6856	6887	6917	6948	6979	7009	7040	7070
6	6736	6767	6796	6827	6857	6888	6918	6949	6980	7010	7041	7071
7	6737	6768	6797	6828	6858	6889	6919	6950	6981	7011	7042	7072
8	6738	6769	6798	6829	6859	6890	6920	6951	6982	7012	7043	7073
9	6739	6770	6799	6830	6860	6891	6921	6952	6983	7013	7044	7074
10	6740	6771	6800	6831	6861	6892	6922	6953	6984	7014	7045	7075
11	6741	6772	6801	6832	6862	6893	6923	6954	6985	7015	7046	7076
12	6742	6773	6802	6833	6863	6894	6924	6955	6986	7016	7047	7077
13	6743	6774	6803	6834	6864	6895	6925	6956	6987	7017	7048	7078
14	6744	6775	6804	6835	6865	6896	6926	6957	6988	7018	7049	7079
15	6745	6776	6805	6836	6866	6897	6927	6958	6989	7019	7050	7080
16	6746	6777	6806	6837	6867	6898	6928	6959	6990	7020	7051	7081
17	6747	6778	6807	6838	6868	6899	6929	6960	6991	7021	7052	7082
18	6748	6779	6808	6839	6869	6900	6930	6961	6992	7022	7053	7083
19	6749	6780	6809	6840	6870	6901	6931	6962	6993	7023	7054	7084
20	6750	6781	6810	6841	6871	6902	6932	6963	6994	7024	7055	7085
21	6751	6782	6811	6842	6872	6903	6933	6964	6995	7025	7056	7086
22	6752	6783	6812	6843	6873	6904	6934	6965	6996	7026	7056	7087
23	6753	6784	6813	6844	6874	6905	6935	6966	6997	7027	7058	7088
24	6754	6785	6814	6845	6875	6906	6936	6967	6998	7028	7059	7089
25	6755	6786	6815	6846	6876	6907	6937	6968	6999	7029	7060	7090
26	6756	6787	6816	6847	6877	6908	6938	6969	7000	7030	7061	7091
27	6757	6788	6817	6848	6878	6909	6939	6970	7001	7031	7062	7092
28	6758	6789	6818	6849	6879	6910	6940	6971	7002	7032	7063	7093
29	6759	6790	6819	6850	6880	6911	6941	6972	7003	7033	7064	7094
30	6760		6820	6851	6881	6912	6942	6973	7004	7034	7065	7095
31	6761		6821		6882		6943	6974		7035		7096

1981 DAY NUMBER

DATE	JAN.	FEB.	MAR.	APR.	MAY	JUNE	JULY	AUG.	SEPT.	OCT.	NOV.	DEC.
1	7097	7128	7156	7187	7217	7248	7278	7309	7340	7370	7401	7431
2	7098	7129	7157	7188	7218	7249	7279	7310	7341	7371	7402	7432
3	7099	7130	7158	7189	7219	7250	7280	7311	7342	7372	7403	7433
4	7100	7131	7159	7190	7220	7251	7281	7312	7343	7373	7404	7434
5	7101	7132	7160	7191	7221	7252	7282	7313	7344	7374	7405	7435
6	7102	7133	7161	7192	7222	7253	7283	7314	7345	7375	7406	7436
7	7103	7134	7162	7193	7223	7254	7284	7315	7346	7376	7407	7437
8	7104	7135	7163	7194	7224	7255	7285	7316	7347	7377	7408	7438
9	7105	7136	7164	7195	7225	7256	7286	7317	7348	7378	7409	7439
10	7106	7137	7165	7196	7226	7257	7287	7318	7349	7379	7410	7440
11	7107	7138	7166	7197	7227	7258	7288	7319	7350	7380	7411	7441
12	7108	7139	7167	7198	7228	7259	7289	7320	7351	7381	7412	7442
13	7109	7140	7168	7199	7229	7260	7290	7321	7352	7382	7413	7443
14	7110	7141	7169	7200	7230	7261	7291	7322	7353	7383	7414	7444
15	7111	7142	7170	7201	7231	7262	7292	7323	7354	7384	7415	7445
16	7112	7143	7171	7202	7232	7263	7293	7324	7355	7385	7416	7446
17	7113	7144	7172	7203	7233	7264	7294	7325	7356	7386	7417	7447
18	7114	7145	7173	7204	7234	7265	7295	7326	7357	7387	7418	7448
19	7115	7146	7174	7205	7235	7266	7296	7327	7358	7388	7419	7449
20	7116	7147	7175	7206	7236	7267	7297	7328	7359	7389	7420	7450
21	7117	7148	7176	7207	7237	7268	7298	7329	7360	7390	7421	7451
22	7118	7149	7177	7208	7238	7269	7299	7330	7361	7391	7422	7452
23	7119	7150	7178	7209	7239	7270	7300	7331	7362	7392	7423	7453
24	7120	7151	7179	7210	7240	7271	7301	7332	7363	7393	7424	7454
25	7121	7152	7180	7211	7241	7272	7302	7333	7364	7394	7425	7455
26	7122	7153	7181	7212	7242	7273	7303	7334	7365	7395	7426	7456
27	7123	7154	7182	7213	7243	7274	7304	7335	7366	7396	7427	7457
28	7124	7155	7183	7214	7244	7275	7305	7336	7367	7397	7428	7458
29	7125		7184	7215	7245	7276	7306	7337	7368	7398	7429	7459
30	7126		7185	7216	7246	7277	7307	7338	7369	7399	7430	7460
31	7127		7186		7247		7308	7339		7400		7461

1979-80 MODEL CHART
DODGE TRUCK - CHASSIS AND BODY MODEL CHART.

MODELS	WHEELBASE	ENGINES	BODY CODE								
			1	2	3	4	5	6	7	8	9
COMPACT - VANS											
B1	109-127	225-1, 318-1, MMC	1								
B2	109-127	(21)225-1, 318-1, 360-1, MMC	1				5				
B3	109-127	(18)225-1, (19)318-1, 360-1, (19) MMC	1				5				
COMPACT - WAGONS (DODGE & PLYMOUTH)											
B1-PB1	109-127	225-1, 318-1, MMC		2							
B2-PB2	109	(21)225-1, 318-1, 360-1, MMC		2							
B2-PB2	127	(21)225-1, 318-1, 360-1, MMC		2					6		
B3-PB3	127	318-1, 360-1, MMC		2					6		
COMPACT - FRONT SECTION VEHICLES (14)											
MB3	109	360-1				3	4				
MB3	127	360-1, 440-1				3	4				
MB4	127-146	360-1, 440-1				3	4				
MB4	163	360-3, 440-3					4				
CB3	109	(18)(11)225-1, (11)318-1, 360-1	1	2							
CB3	127	(21)225-1, (11)318-1, 360-1	1	2							
CB3	145	(21)225-1, (11)318-1, 360-1	1	2							
CB4	163	360-3	1	2							
CONVENTIONAL CAB											
D1	115-131	225-1, 318-1, MMC	1	(2)	1	3	4				
D15	115-131	318-1, 360-1, MMC (17)	1	(2)	1	3	4				
D2	131	(18)225-1, 318-1, 360-1, MMC (17)	1	(2)	1	3	4				
RD2	131	360-1	1			3					
D3	131	(21)225-1, (11)318-1, 360-1	1				4				
D3	135	(21)225-1, (11)318-1, 360-1	1								
D3	159	(21)225-1, (11)318-1, 360-1	1								
D4	135-159	360-1	1								
D6	157-175	225-2, 318-3, 360-3	1							7	
D6	157-175-197-221	318-3, 360-3, 6-354	1							7	
D8	157-175-197	413-3	1								
W16	115-131	225-1, 318-1, 360-1, MMC (17)	1	(2)	1	3	4				
W2	131	(21)(18)225-1, 318-1, 360-1, MMC (17)	1	(2)	1	3	4				
W3	135	(21)225-1, (11)318-1, 360-1	1								
W4	145	360-1	1								
WK3	126	225-2	1							7	
W6	157-175	318-3, 360-3	1								
CREW CAB											
D2	149-166	(11)(18)225-1, 318-1, 360-1, (18) MMC		2	(2)	1					
RD2	149	360-1		2			5			6	
D3	165	(11)318-1, 360-1								6	
W2	149	(11)(18)225-1, 318-1, 360-1		2	(2)	1				6	
CLUB CAB											
D15	133-149	225-1, 318-1, 360-1, MMC (17)								7	
D2	149	(18)225-1, 318-1, 360-1, MMC (17)								7	
RD2	149	360-1									8
D3	149	(11)318-1, 360-1								7	8
W16	133-149	(11)(18)225-1, 318-1, 360-1, MMC (17)								7	
W2	149	(11)(18)225-1, 318-1, 360-1								7	
SPORT UTILITY (DODGE & PLYMOUTH)											
AD1-PD1	106	225-1, 318-1, 360-1	1								
AW1-PW1	106	318-1, 360-1	1								
LCF CAB											
XNT9	146, 222	NHC - 250	1								
SUB-COMPACT PICKUP											
SP27	109	2000 CC 2800 CC					4				
SCHOOL BUS											
S6	157-175-197-221-240-258	318-3, 360-3, 6-354								7	
S7	240-258	360-3, 413-3								7	
MOTOR HOME											
(20) M3	125-137	360-3									
M4	137-159	360-3, 440-3									
M5	159-178	440-3									
M6	228	440-3									

1979 TRUCK BODY CODE

- 1 - Dodge Van, Cab & Chassis - Truck Type Vehicles, Sport Utility.
- 2 - Sportman, Crew Cab and Chassis.
- 3 - Conv. Cab with Utiline, MB300 Low Line.
- 4 - Conv. Cab with Sweptline, MB300 High Line.
- 5 - Dodge Van - Extended Body, Crew Cab W/Utiline.
- 6 - Sportman - Extended Body Crew Cab W/Sweptline.
- 7 - Flag Face Cowl, Club Cab with Sweptline.
- 8 - W/S Cowl, Club Cab, and Chassis.
- 9 - Club Cab and Utiline

MODEL SERIAL NUMBER CODING

The Vehicle Serial Number is comprised of 7 Elements consisting of a total of 13 Alpha and Numeric Characters:

Listed below are the elements that comprise the Vehicle Identification Number.

ELEMENT 1 — TRUCK MODEL DESIGNATION

AA = PW100	B1 = B100	D1 = D150	E1 = AD100	W1 = W150
BA = PB100	B2 = B200	D2 = D200	F3 = MB300	W2 = W200
BB = PB200	B3 = B300	R2 = RD200	F4 = MB400	W3 = W300
BC = PB300	C3 = CB300	D3 = D300	M3 = M300	W4 = W400
EA = PD100	C4 = CB400	D5* = D500	M4 = M400	W6* = W600
A1 = AW100	D1 = D100	D6* = D600	M5 = M500	S6* = S600
		D8* = D800	M6 = M600	S7* = S700

* Mexico Built (Export Only!)

ELEMENT 2 — BODY TYPE

- | | |
|---|--|
| 0 - Forward Control & Motor Home Chassis, Incomplete Chassis, CB300 Kary Van, CB400 Kary Van, Sport Utility Truck Type Vehicles | 4 - Conventional Cab W/Sweptline, MB3 Hi-Line, MB4 Hi-Line, Chassis, Cab Tractor |
| 1 - Tradesman Van, Conventional Cab & Chassis | 5 - Tradesman Maxi Van, Crew Cab W/Utiline |
| 2 - Sportsman, Crew Cab & Chassis (Step Van Canada Only, CB300 Cab & Chassis) | 6 - Sportsman Maxi Wagon, Crew Cab W/Sweptline |
| 3 - Conventional Cab W/Utiline, MB3 Low Line | 7 - Flat Face Cowl, Club Cab W/Sweptline |
| | 8 - Windshield Cowl, Club Cab |
| | 9 - Club Cab with Utiline Pickup |

ELEMENT 3 — GVW CLASS

A - 6,000 lbs or less	D - 14,001 lbs to 16,000 lbs
B - 6,001 lbs to 10,000 lbs	E - 16,001 lbs to 19,500 lbs
C - 10,001 lbs to 14,000 lbs	F - 19,501 lbs to 26,000 lbs
	G - 26,001 lbs to 33,000 lbs
	H - 33,001 lbs and up

ELEMENT 4 — ENGINE TYPE

NOTE =
For 80-81 Engine Type See INF Pg-12

GASOLINE ENGINE LEGEND 1978-79

A = 440-3 (4V)	F = 360-1 (2V)	R = 413-3 (4V)
B = 225-1 (2V)	G = 318-3 (2V)	S = 360 Hi Perf. (4V)
C = 225-2 (1V)	K = 360-3 (2V)	T = 360-1 (4V)
D = 440-1 (4V)	N = 225-1 (1V)	X = Special 6-cyl. Gasoline Engine
E = 318-1 (2V)	P = 318-1 (4V)	V = Special 8-cyl. Gasoline Engine

DIESEL ENGINE LEGEND

H = 243 Mitsubishi
9 = 6-354 Perkins 446 Eng.

ELEMENT 5 — YEAR BUILT 8 ("8" Series — 1978), ("9" Series), ("A" Series — 1980) (1981-"B" Series)

ELEMENT 6 — PLANT LOCATIONS

C = Jefferson Assy. Plt.	M = Toluca Assy. Plt. (Mexico)	T = Warren Truck # 2 (Sherwood)
K = Pillette Road Truck	N = Burt Road (KDX)	X = Missouri Truck
L = Lago Alberto Assy. Plt. (Mexico)	S = Warren Truck # 1	V = Warren Truck # 3 (Compact)

ELEMENT 7 — SEQUENTIAL SERIAL NUMBER

100001

Vehicle Sequential Number

"B" Series (1978) "9" Series (1979) ("A" Series—1980) For M Models see note bottom INF. pg-13. Production Model Year) ("B" Series-1981)

B 1 2 A B 8 X
A A/N,N A A/N N A

- A A = PW100 (Plymouth Trail Duster)
- B A = PB100 (Plymouth)
- B B = PB200 (Plymouth)
- B C = PB300 (Plymouth)
- E A = PD100 (Plymouth)

- 100001 at Warren Truck # 1 Missouri, Truck and Pillette Truck Plant
- 500001 at Warren Truck # 2 and Tecumseh Truck Plant.
- 700001 at Warren Truck # 3 Plant

1981 DOMESTIC TRUCK, MULTIPURPOSE VEHICLE, BUS, AND INCOMPLETE VEHICLES VEHICLE IDENTIFICATION NO.

<p>POSITION 1</p> <p>1st POSITION COUNTRY</p> <p>1 - Built in U.S. 2 - Built in Can.</p>	<p>POSITION 2</p> <p>2nd POSITION MAKE</p> <p>B - Dodge E - Fargo P - Plymouth</p>	<p>POSITION 3</p> <p>3rd POSITION VEHICLE TYPE</p> <p>4 - Multipurpose Passenger Vehicle (MPV) 5 - Bus 6 - Incomplete Vehicle 7 - Truck</p>	<p>POSITION 4</p> <p>4th POSITION OTHER</p> <p>TRUCK or MPV WITH HYDRAULIC BRAKES</p> <p>D - 1 - 3000 E - 3001 - 4000 F - 4001 - 5000 G - 5001 - 6000 H - 6001 - 7000 J - 7001 - 8000 K - 8001 - 9000 L - 9001 - 10000 M - 10001 - 14000 N - 14001 - 16000 P - 16001 - 19000 R - 19001 - 26000 S - 26001 - 33000 T - 33001 & Above</p> <p>BUSES OR INCOMPLETE VEHICLES WITH HYDRAULIC BRAKES</p> <p>W</p>	<p>POSITION 5</p> <p>5th POSITION LINE</p> <p>TRUCK</p> <p>B - Ram Van C - Ram Kary Van D - Ram Pickup 4 x 2 W - Power Ram Pickup 4 x 4 R - Railarama</p> <p>MPV</p> <p>B - Dodge Ram Wagon/Van Plymouth Voyager Wagon/Van D - Dodge Ramcharter 4 x 2 Plymouth Trailduster 4 x 2 W - Dodge Ramcharger 4 x 4 Plymouth Trailduster 4 x 4</p> <p>BUS</p> <p>B - Dodge Ram Wagon Plymouth Voyager Wagon</p> <p>INCOMPLETE VEHICLE</p> <p>D - Ram Chassis Cab 4 x 2 W - Power Ram Chassis 4 x 4 C - Ram Commercial Front Section F - Ram Motor Home Front Section H - Ram Motor Home Chassis B - Ram Motor Wagon/Van R - Railarama</p>	<p>POSITION 6</p> <p>6th POSITION SERIES</p> <p>1 - 150 Job Rated Series</p> <p>2 - 250 " " " 3 - 350 " " " 4 - 450 " " " 5 - 550 " " " 6 - 650 " " " 7 - 750 " " " 8 - 850 " " " 9 - 950 " " "</p>
--	--	---	---	---	---

<p>POSITION 7</p> <p>7th POSITION BODY STYLE</p> <p>1 - Wagon 2 - Sport Utility 3 - Van 4 - Conventional Cab 5 - Club Cab 6 - Crew Cab 7 - Stripped Chassis 8 - Front Section</p>	<p>POSITION 8</p> <p>8th POSITION ENGINE**</p> <p>E - 3.7 L gas 1 bbl S.D. P - 5.2 L gas 2 bbl S.D. R - 5.2 L gas 4 bbl H.D. S - 5.9 L gas 2 bbl S.D. T - 5.9 L gas 4 bbl S.D. U - 5.9 L gas 4 bbl H.D. (Single Exhaust) V - 5.9 L gas 4 bbl H.D. (Dual Exhaust)</p>	<p>POSITION 9</p> <p>9th POSITION CHK DIGIT***</p> <p>0 1 2 3 4 5 6 7 8 9 X</p>	<p>POSITION 10</p> <p>10th POSITION MODEL YEAR</p> <p>A - 1980 B - 81 C - 82 D - 83 E - 84 F - 85 G - 86 H - 87 J - 88 K - 89 L - 1990 M - 91 N - 92 P - 93 R - 94 S - 95 T - 96 V - 97 W - 98 X - 99 Y - 2000 1 - 01</p>	<p>POSITION 11</p> <p>11th POSITION ASSY PLANT</p> <p>U.S.</p> <p>A - Lynch Road C - Jefferson D - Belvidere F - Newark G - St. Louis S - Warren # 1 T - Warren # 2 V - Warren # 3 X - Missouri</p> <p>CANADA</p> <p>J - Tecumseh Assy K - Pillette R - Windsor</p>	<p>POSITION 12-17</p> <p>12th thru 17th POSITION SEQUENCE NO.</p> <p>START WITH 100001</p> <p>EXCEPT WARREN # 2 START WITH 500001 WARREN # 1 START WITH 700001</p>
---	--	---	---	---	--

● **EQUIPMENT IDENTIFICATION PLATE**

The equipment identification plate as shown in Figure 2, contains information regarding the vehicle: model, wheelbase, V.I.N. (Vehicle Identification Number), T.O.N. (Truck Order Number), and all production or special equipment on the vehicle when it was shipped from the factory. ALWAYS REFER TO THIS PLATE WHEN ORDERING PARTS. The location of the equipment identification plate for the Models is listed below.

EQUIPMENT IDENTIFICATION			
CODE NO.	DESCRIPTION	CODE NO.	DESCRIPTION

IF SPECIAL EQUIPMENT (IDENTIFIED BY 6 DIGIT CODE NO.) AFFECTS REPLACEMENT PARTS, INCLUDE "S" EQUIPMENT GROUP AND SPECIAL EQUIPMENT CODE NO. ON PARTS ORDER. **IMPORTANT - RETAIN THIS PLATE AS A PERMANENT RECORD**

MODEL REFERENCE	LOCATION ON VEHICLE
Conventional Cab	Hood Inner Surface
Conventional Cowl	Hood Inner Surface
Forward Control	Refer to Body Builder
Sport Utilities	Hood Inner Surface

● **VEHICLE IDENTIFICATION PLATE**

The vehicle identification plate as shown is attached to the Driver's Side Door Body Latch Post on all Models.

Dodge		Plymouth	
Fargo		GeSOTO	
MARCAS REG. TMN. REG. U.S. PAT. OFF.			
MAKE		MODEL	
V.I.N.		T.O.N.	
MAX. GVW*			
<small>GROSS VEHICLE WEIGHT (GVW) IS TOTAL WEIGHT OF THE VEHICLE INCLUDING OPTIONS, DRIVER, PASSENGERS, BODY & PAYLOAD. (SEE OPERATOR'S MANUAL PACKAGE FOR SPECIFIC EQUIPMENT REQUIRED FOR A GIVEN GVW RATING. WARRANTY VOID IF ANY RATINGS ARE EXCEEDED. FOR THE ACTUAL GVW & GAWR RATINGS OF THIS VEHICLE SEE THE SAFETY CERTIFICATION LABEL.)</small>			

Vehicle Identification Plate

No. Cyl.	Cubic Inch Displacement	Engine Serial Location	Parts Replacement Information Location
6	225 cu. in.	Right side of block below #1 spark plug	Right side of block below #1 spark plug
8	318 cu. in.	Left front of block below cylinder head	Left front of block with engine number
8	360 cu. in.	Left front of block below cylinder head	Left front of block with engine number

● **VEHICLE CERTIFICATION LABEL**

The vehicle certification label, is located on the door opening side of the "B" post. The label includes an MDH number (Month, Day, Hour) build date. Use this label information when reporting deficiency conditions.

VEHICLE NOISE EMISSION CONTROL INFORMATION	
	DATE OF VEHICLE MANUFACTURE 1980
<small>THIS VEHICLE CONFORMS TO U.S. EPA REGULATIONS FOR NOISE EMISSION APPLICABLE TO MEDIUM AND HEAVY DUTY TRUCKS.</small>	
<small>THE FOLLOWING ACTS OR THE CAUSING THEREOF BY ANY PERSON ARE PROHIBITED BY THE NOISE CONTROL ACT OF 1972: (A) THE REMOVAL OR RENDERING INOPERATIVE, OTHER THAN FOR PURPOSES OF MAINTENANCE, REPAIR, OR REPLACEMENT, OF ANY NOISE CONTROL DEVICE OR ELEMENT OF DESIGN (LISTED IN THE OWNERS MANUAL) INCORPORATED INTO THIS VEHICLE IN COMPLIANCE WITH THE NOISE CONTROL ACT; (B) THE USE OF THIS VEHICLE AFTER SUCH DEVICE OR ELEMENT OF DESIGN HAS BEEN REMOVED OR RENDERED INOPERATIVE.</small>	

Vehicle Emission Control Information Label for sale and use in the United States are required to comply with the Federal Government's Exterior Noise Regulations. These vehicles can be identified by the Noise Emissions Control Label located in the operator's compartment.

		GAWR FRONT	
DATE OF MFG		GAWR INTERMEDIATE	
GVWR		GAWR REAR	
VEHICLE NUMBER		3731907	
VEHICLE TYPE		MDH	

MFG BY		DATE OF MFG	GVWR
GAWR FRONT	WITH TIRES	RIMS AT	PSI CODE
GAWR REAR	WITH TIRES	RIMS AT	PSI CODE
SINGLE	DUAL	THIS VEHICLE CONFORMS TO ALL APPLICABLE FEDERAL MOTOR VEHICLE SAFETY STANDARDS IN EFFECT ON THE DATE OF MANUFACTURE. (GVWR, GVW, GAWR, RIMS AT, PSI CODE)	
VEHICLE NUMBER		VEHICLE TYPE	MDH

Vehicle Certification Label

ENGINE IDENTIFICATION

The following chart and Figures 4, 5, 6, 7 and 8 describe location of engine serial number and parts replacement information.

No. Cyl.	Cubic Inch Displacement	Engine Serial Number Location	Parts Replacement Information Location
6	225 cu. in.	Right side of block below #1 spark plug	Right side of block below #1 spark plug
8	243 cu. in. **	Left side of block below #6 cylinder	Forward side of engine mounting bracket below injector pump
8	318 cu. in.	Left front of block below cylinder head	Left front of block with engine number
8	360 cu. in.	Left front of block below cylinder head	Left front of block with engine number
8	400 cu. in.	Right side of block adjacent to #2 cylinder bore	Right side of block adjacent to #2 cylinder bore
8	440 cu. in.	Left side of block adjacent to front tappet rail	Left side of block adjacent to front tappet rail

*Note: Any light duty truck engine used with a catalytic converter must use unleaded fuel.

**The 243 Diesel engine must use diesel fuel.

DETERMINE ENGINE IDENTIFICATION

225 Cubic Inch Engine

The 225 cubic inch engine assembly will carry an identification number as follows:

The first letter will designate the model year, (8).

The three numbers following the model year indicate the cubic inch displacement, (225).

The letter following the engine displacement designates the engine usage, (T)-Truck (LC)-Low Compression.

The numbers following the engine usage designate the shift built.

The four numbers following the shift built designate the build date. The first two digits designate the month and the last two digits designate the day of the month.

The letter or character following the build date indicates oversize or undersize component parts.

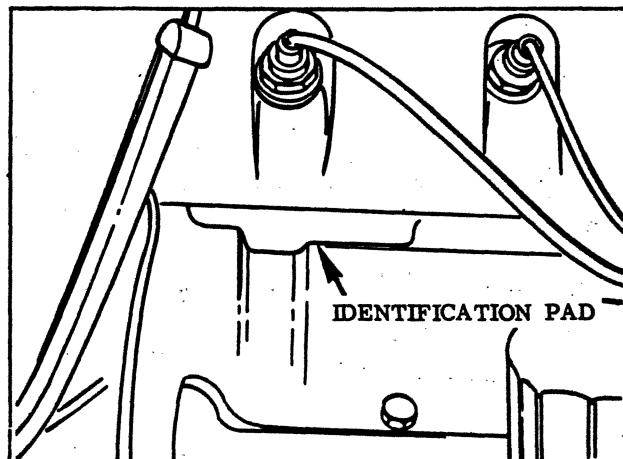
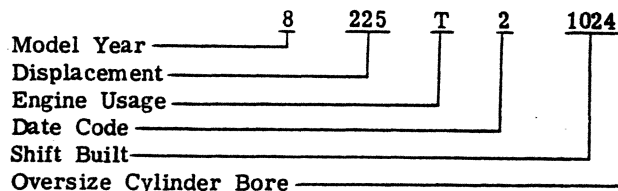


Fig. 4 - 225 Cubic Inch Engine Identification Location

225 ENGINE SERIAL NUMBER EXAMPLE



318 and 360 Cubic Inch Engines

The following identification will be included on engine serial number pad on 318 and 360 cubic engines.

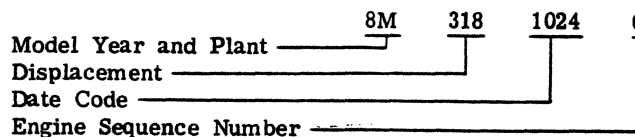
The first letter will designate the model year and second letter the manufacturing plant, (8M-Mound 1 318 CID Engine), (8W-Windsor 360 CID Engine).

The three numbers following the plant identification indicate the cubic inch displacement, (318-360).

The four numbers following the engine cubic displacement designate the build date. The first digits designate the month and the second two digits designate the day of the month.

The last four numbers (optional) following the build date are engine sequence numbers built that day.

318 and 360 ENGINE SERIAL NUMBER EXAMPLE



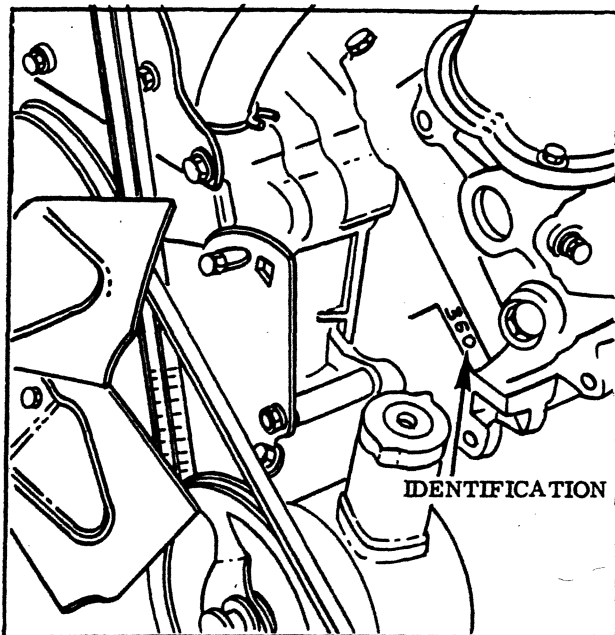


Fig. 5 - 318 and 360 Cubic Inch Engine Identification Location

400 and 440 Cubic Inch Engines

The 400 and 440 cubic inch engine assemblies will carry an identification number as follows:

The first letter will designate the model year and the second letter the manufacturing plant, (8t-Trenton).

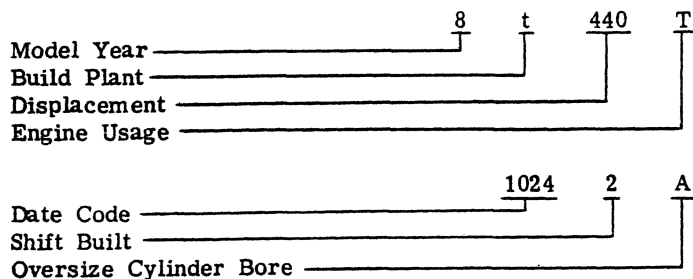
The three numbers following the plant identification indicate the cubic inch displacement, (400 and 440).

The letter following the engine displacement designates the engine model, (T-Truck), (LC-Low Compression).

The four numbers starting the second line designate the build date. The first two digits designate the month and the last two digits designate the day of the month.

The number following the build date designates the shift built. The letter or character following the shift built indicates oversize or undersize component parts.

400 AND 440 ENGINE SERIAL NUMBER EXAMPLE



TRANSMISSION IDENTIFICATION

Specific vehicles referred to in this manual can be identified as to Part Number, Model, and Build Date by information supplied on the Transmission Identification Tag.

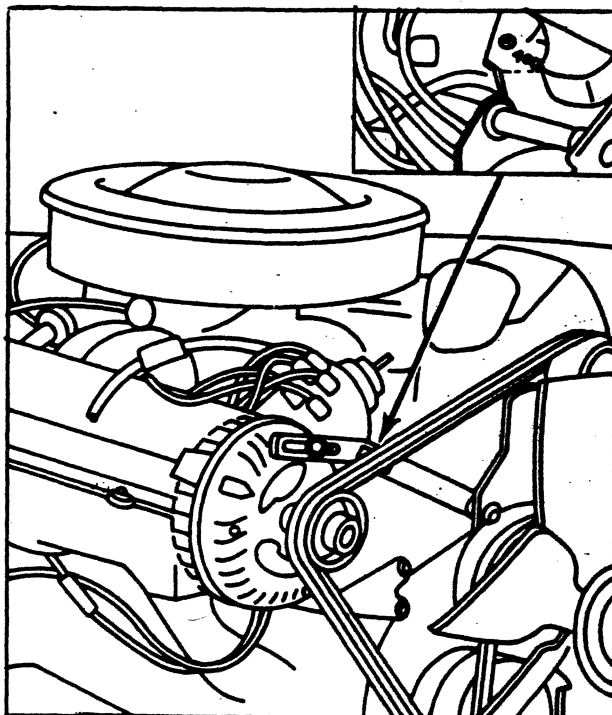


Fig. 6 - 400 Cubic Inch Engine Identification Location

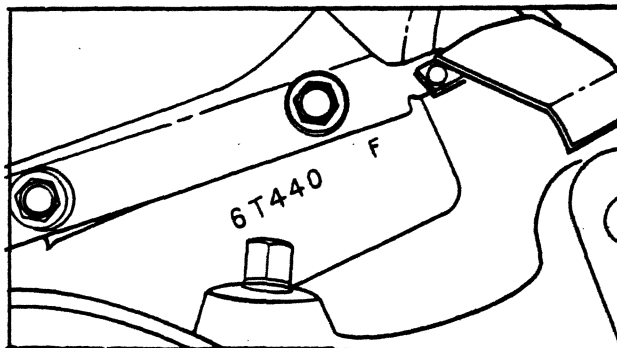


Fig. 7 - 440 Cubic Inch Engine Identification Location

Operation requirements are, in some instances, different for each vehicle and engine combination and some internal parts will be different to provide for this. Therefore, when replacing parts, refer to the number stamped on left side of the transmission oil pan flange.

See Group 21 of this Manual for additional information.

For manual transmissions, an aluminum Identification Tag has been provided and is secured by two bolts to the power take-off cover. Do not discard this tag in the event transmission power take-off cover is removed. On other transmission models, a blue metal Identification Tag is permanently attached to the left side of transmission case at the top near the case cover.

For automatic transmissions, a surface pad has been provided on the right side of the transmission case to supply identification.