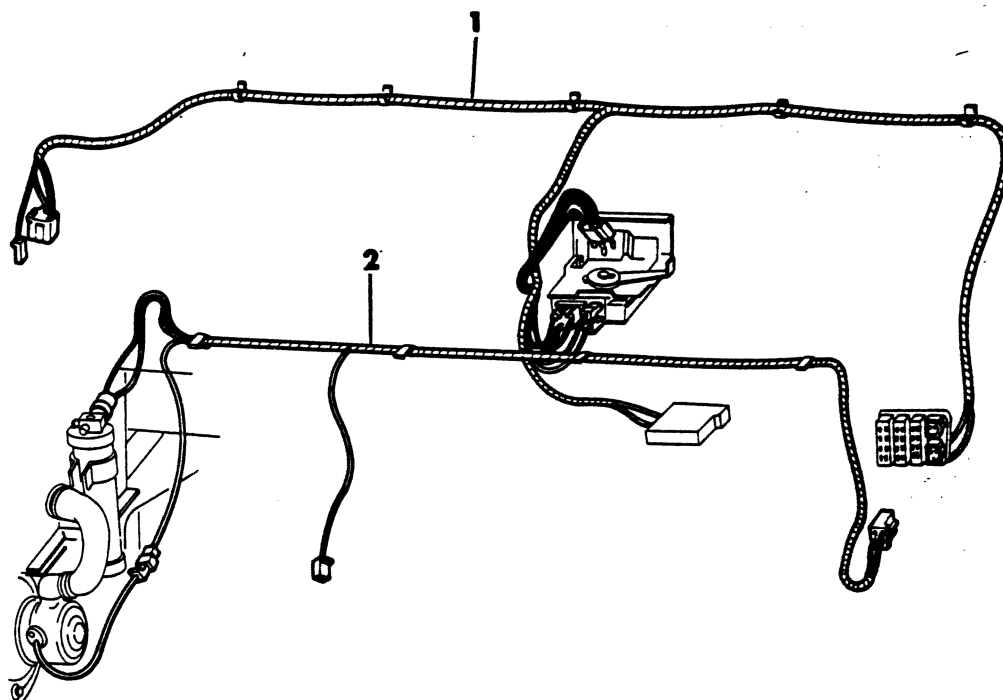


GROUP 24 - HEATER AND AIR

AIR CONDITIONING A-D-W-RD, 1981	Fig. 24-1110
AIR CONDITIONING AND DUCTS B-CB-MB 1978	Fig. 24-400
AIR CONDITIONING AND DUCTS B-CB-MB 1979-80-81	Fig. 24-425
AIR CONDITIONING AND HEATER PLUMBING B-CB-MB 1978	Fig. 24-200
AIR CONDITIONING AND HEATER PLUMBING B-CB-MB 1979-80-81	Fig. 24-250
AIR CONDITIONING AND HEATER PLUMBING A-D-W-RD	Fig. 24-1100
AIR CONDITIONING AND PLUMBING A-B-D-W-RD, 1981	Fig. 24-1105
AIR CONDITIONING CONDENSER & DISCHARGE HOSE A-B-D-W-RD	Fig. 24-700
AIR CONDITIONING DISTRIBUTION DUCTS A-D-W-RD	Fig. 24-1000
AIR CONDITIONING EVAPORATOR, CONTROLS, MOTOR AND HOUSING B-CB-MB 1978	Fig. 24-300
AIR CONDITIONING VACUUM PUMP DIESEL ENGINE D-W	Fig. 24-775
AUXILIARY REAR AIR AND HEATER PLUMBING B1-2-3	Fig. 24-550
COMPRESSOR AND CLUTCH - A/C 8 CYL A-B-D-W-RD 1978-79-80	Fig. 24-1300
COMPRESSOR AND PARTS - AIR CONDITIONING 225 AND MMC DIESEL ENGINE	Fig. 24-1400
COMPRESSOR MOUNTING A-B-D-W-RD, 1978-79-80	Fig. 24-1200
COMPRESSOR MOUNTING WITH 225 AND MMC DIESEL ENG. B-D-W, 1978-79-80	Fig. 24-1250
DUCTS AND CONTROLS A-D-W-RD 1981	Fig. 24-1005
HEATER AND AIR CONDITIONER A-D-W-RD 1978-79-80	Fig. 24-900
HEATER AND AIR CONDITIONING CONTROLS A-D-W-RD	Fig. 24-800
REAR AIR CONDITIONING AND HEATER B MODEL	Fig. 24-600
REAR COMPARTMENT AIR CONTIONING AND HEATER B-CB	Fig. 24-500
WIRING ASSEMBLY B-CB-MB	Fig. 24-100

8324 100

WIRING ASSEMBLY
B-CB-MB



ITEM	PART NUMBER	QTY	MODEL	DESCRIPTION
WIRING ASSEMBLY B-CB-MB				
1	4114 617	1		WIRING ASSY., Inst. Panel
2	4085 387	1		WIRING ASSY., Eng. Complete 1978
2	4162 594	1		WIRING ASSY., Eng. Complete 1979-80-81
	6003 464	1		CLIP, A/C & Htr. Temp. Control Cable Mtg. (not shown)
	6006 041	1		SCREW, A/C & Htr. Control P.Btn. Switch Mtg. (notshown)
	6015 778	1		CLIP, A/C & Htr. Vac. Cont. Hose Mtg. (not shown)

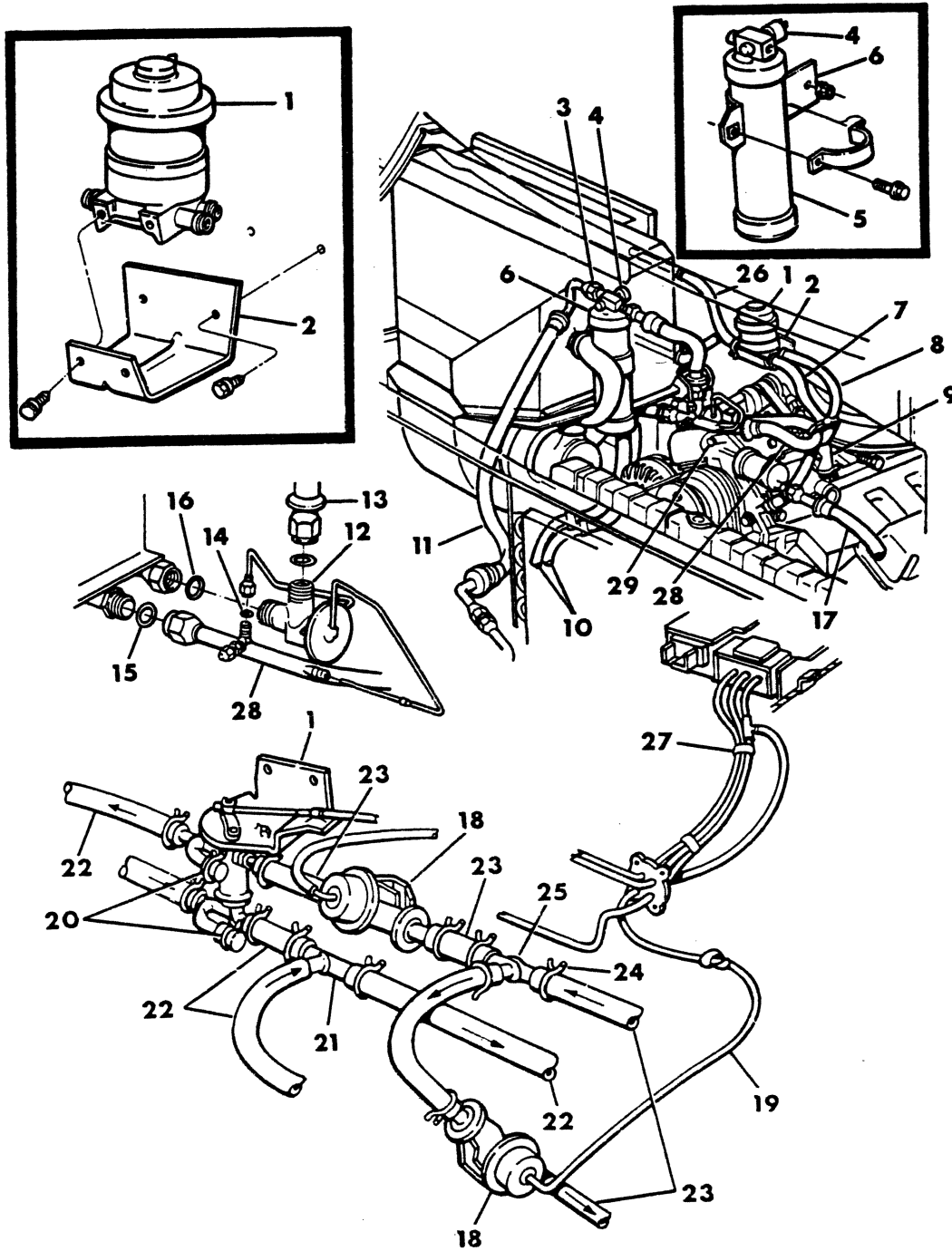
LIGHT DUTY CODES: A = All Sport Utility (Ramcharger). B = All Compact Models. D = Conventional Cab.
 AD = 2 Wheel Drive Only (Ramcharger). CB-MB = Compact Front Section Only. W = Conventional Cab 4 Wheel Drive.
CODES: AW = 4 Wheel Drive Only (Ramcharger). P = Forward Control Chassis. M = Motor Home.

MEDIUM-HEAVY CODES: XNT = Low Cab Forward. D = Conventional Cab. S = School Bus. W = 4-Wheel Drive.

AR=Use as Required # =New Part Number Printed in U.S.A. June, 1982

AIR CONDITIONING AND HEATER PLUMBING
B-CB-MB 1978

8324 200A



ITEM	PART NUMBER	QTY	MODEL	DESCRIPTION
AIR CONDITIONING AND HEATER PLUMBING				
B-CB-MB 1978				
1	3441 561	1		VALVE, Water w/360 Eng. (Except B100)
	3738 689	1		w/Man. Control
	3895 442	1		VALVE, A/C & Htr. Vac. Water, w/6 Hole Opening
2	2958 919	1		BRACKET, Water Valve Mounting
3	2219 383	1		"O" RING, Condenser to Rec. Drier Tube 1978
4	3879 432	1		SWITCH, Low Pressure Cut-Off
	3441 105	1		SEAL, Low Pressure Switch to Receiver Drier
5	3502 015	1		DRIER, Receiver
6	2958 928	1		BRACKET, Receiver Drier Mounting
	120 375	2		NUT, C/Wa., A/C & Htr. Rec. Drier Mtg.
7	1315 466	1		HOSE, Valve to Pump 5/8" I.D. (Serv. Roll Stock)
8	2936 388	1		HOSE, Valve to Engine 1/2" I.D. (Serv. Roll Stock)
9	5210 322	1		SLEEVE, 8 Cyl. Only
10	2097 131	2		HOSE, A/C & Htr. Drain
11	3635 258	1		HOSE, A/C to Receiver Drier
12	3703 651	1		VALVE w/SEAL, Expansion
13	3635 130	1		HOSE, Receiver Drier to Expansion Valve
	2219 383	1		"O" RING, Expansion Valve to Receiver Drier 1978
14	2277 190	1		"O" RING, Expansion Valve to Capillary Tube
15	2521 172	1		"O" RING, Compressor Suction Hose
16	2219 384	1		"O" RING, Expansion Valve to Air Cond.
17	4115 246	1		HOSE, Compressor Discharge
18	4034 436	1		VALVE, A/C & Htr. Aux. Water Vac. On-Off
19	3780 508	1		HOSE, Vacuum 1/8" I.D. (Serv. Roll Stock)
20	2128 425	1		CAP, Control Valve
21	2506 170	1		TEE, 5/8 x 5/8 x 5/8
22	1315 466	1		HOSE, 5/8" I.D. (Serv. Roll Stock)
23	2936 388	AR		HOSE, 1/2" I.D. (Serv. Roll Stock)
24	272 848	3		CLAMP, Hose
25	3489 421	1		TEE, 1/2 x 1/2 x 1/2
26	680 734	AR		HOSE, Valve to Heater Core
27	4085 899	1		HOSE w/CONNECTOR, Vacuum Control
28	4085 525	1		HOSE, Suction
29	4086 295	1		FITTING & MUFFLER, Discharge
	3846 885	1		SWITCH, A/C Temp. Sensing w/225 Eng. (Not Shown)

LIGHT A = All Sport Utility (Ramcharger). B = All Compact Models. D = Conventional Cab.
DUTY AD = 2 Wheel Drive Only (Ramcharger). CB-MB = Compact Front Section Only. W = Conventional Cab 4 Wheel Drive.
CODES: AW = 4 Wheel Drive Only (Ramcharger). P = Forward Control Chassis. M = Motor Home.

MEDIUM-HEAVY CODES: XNT = Low Cab Forward. D = Conventional Cab. S = School Bus. W = 4-Wheel Drive.

AR=Use as Required

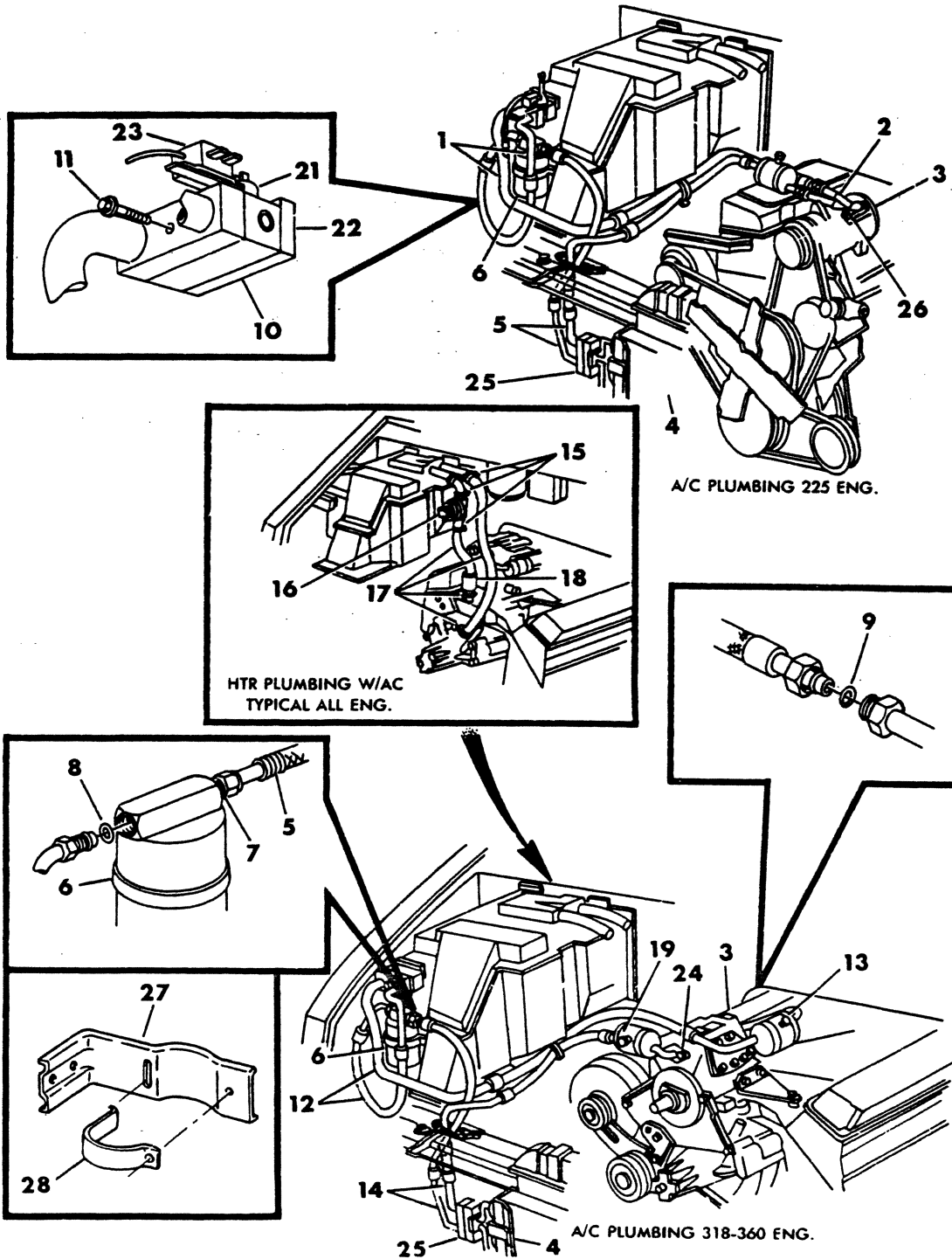
=New Part Number

Printed in U.S.A.

June, 1982

AIR CONDITIONING AND HEATER PLUMBING B-CB-MB 1979-80-81

8324 250B



ITEM	PART NUMBER	QTY	MODEL	DESCRIPTION
AIR CONDITIONING AND HEATER PLUMBING				
B-CB-MB 1979-80-81				
1	4085 800	1		HOSE w/SWITCH, Suction w/225 Eng. 78-79-80
	4163 978	1		HOSE w/SWITCH, Suction w/225 Eng. 1981
2	4114 165	1		TUBE, Suction, Compr. End 225 Eng.
3				COMPRESSOR (Refer to illus. 24-1300)
	4112 579	1		TUBE, Discharge, Compr. End w/225 Eng. 1980
	4163 923	1		HOSE w/MUFFLER, Discharge w/225 Eng. 1980
	3847 147	2		PILOT, Compr. Discharge Flange 1980-81
4				CONDENSER (Refer to illus. 24-700)
5	4085 801	1		HOSE w/MUFFLER, Discharge w/225 Eng. UP TO 6-2-1979
	4112 741	1		HOSE w/MUFFLER, Discharge w/225 Eng. AFTER 6-2-1979
	4163 912	1		HOSE, Discharge Line w/225 Eng. 1981
	3847 083	1		GSKT. Line Mtg. To Drier
	4163 990	1		MUFFLER, Discharge w/225 Eng. 1981
	3704 531	1		CAP, Muffler 79-80-81
	3847 576	1		VALVE, Disch. Line Check w/225 Eng. 79-80-81
6	3847 150	1		FILTER, Drier 79-80
	3847 829	1		FILTER, Drier 1981
7	2219 384			"O" RING, Discharge Hose
8	5210 380	1		"O" RING, Liquid Hose
9	2219 385	1		"O" RING, Suction Hose Compr. End w/225 Eng.
10	4177 000	1		H-VALVE, A/C Expansion 1979-80
	4176 999	1		H-VALVE, A/C Expansion 1981
11	6100 314	1		SCREW w/WA., (M8 x 1.18)
12	4085 799	1		HOSE, Suction & Liquid Unified 318-360 Eng. UP to 4-2-1979
	4114 747	1		w/318-360 Eng. AFTER 4-2-1979
	4085 799	1		w/Aux. A/C 440 Eng. 1979
	4162 407	1		w/o Aux. A/C w/318-360 Eng. 1980
	4114 170	1		w/Aux. A/C w/318-360 Eng. 1980
	4163 907	1		W/o Aux. A/c 318-360 Eng. 1981
	3846 567	1		GSKT., Suction Hose Flange 1979-80
13	3704 531	1		CAP, A/C Muffler Charging Valve
14	4085 802	1		HOSE w/MUFFLER, Discharge and Liquid Unified w/318-360 Eng. UP to 4-2-1979
	4164 205	1		CONNECTOR ASSY., Discharge Hose w/Muffler w/318-360 Eng. AFTER 4-2-1979
	4085 802	1		HOSE w/MUFFLER, Discharge and Liquid w/440 Eng. 1979
	4162 408	1		HOSE, Discharge and Liquid w/318-360 Eng. 1980
	4163 911	1		HOSE, Discharge and Liquid w/318-360 Eng. 1981
15	870 469	4		CLAMP, A/C and Htr. Hose
16	4085 474	1		VALVE, A/C and Htr. Water Vacuum
17	1315 466	1		HOSE, Heater and A/C 5/8" I.D. (Serv. Roll Stock)
	1779 258	AR		NIPPLE, Eng. Manif. A/C and Htr. Hose 3/8-18 x 2
	2936 757	AR		3/8-18 x 3
	3489 896	AR		TEE, A/C and Htr. Supply Hose 5/8 x 5/8 x 1/2
	2506 170	AR		Return Hose 5/8 x 5/8 x 5/8
18	5210 322	1		SLEEVE, Water Vacuum Valve Hose
	5210 322	1		Eng. to Water Valve Supply Hose
19	3847 576	1		VALVE, Discharge Line Check 1980
21	3879 432	1		SWITCH, Low Pressure Cut-Off 1978

LIGHT A = All Sport Utility (Ramcharger).

B = All Compact Models.

D = Conventional Cab.

DUTY AD = 2 Wheel Drive Only (Ramcharger).

CB-MB = Compact Front Section Only.

W = Conventional Cab 4 Wheel Drive.

CODES: AW = 4 Wheel Drive Only (Ramcharger).

P = Forward Control Chassis.

M = Motor Home.

MEDIUM-HEAVY CODES: XNT = Low Cab Forward. D = Conventional Cab. S = School Bus. W = 4-Wheel Drive.

AR=Use as Required

= New Part Number

Printed in U.S.A.

June, 1982

1978-81 LIGHT DUTY TRUCK PARTS CATALOG

ITEM	PART NUMBER	QTY	MODEL	DESCRIPTION
------	-------------	-----	-------	-------------

AIR CONDITIONING AND HEATER PLUMBING B-CB-MB 1979-80-81

	5210 377	1		1979-80-81
	3441 105	1		SEAL, Low Pressure Switch
22	3846 836	1		GASKET, Expansion Valve Mtg. 2 Hole
	3846 834	1		3 Hole
23	4106 143	1		SWITCH, A/C Temperature Sensing w/225 Eng.
24	3846 272	1		GASKET, Compr. Muffler and Discharge Fitting Flange
25	3846 835	1		GASKET, Disch. & Liq. Line Plate to Condenser 225, 318, 360 Eng.
26	3847 081	1		GASKET, Discharge Line Flange to Compr. (Rubber Coated) 1980-81
27	4085 809	1		BRACKET, Filter Drier Strap Mtg. UP to 6-1-1979
	4114 754	1		AFTER 6-1-1979
28	3846 134	1		STRAP, Filter Drier Mtg.
	4026 132	AR		HOSE, A/C 13/32" I.D., 7/8" O.D. (Serv. in 50 Ft Roll)
	4026 131	AR		1/2" I.D., 1" O.D. (Serv. in 50 Ft Roll)
	4117 031	1		CONNECTOR, Unified Line 225 Eng. (Not Shown)

LIGHT A = All Sport Utility (Ramcharger). B = All Compact Models. D = Conventional Cab.
DUTY AD = 2 Wheel Drive Only (Ramcharger). CB-MB = Compact Front Section Only. W = Conventional-Cab 4 Wheel Drive.
CODES: AW = 4 Wheel Drive Only (Ramcharger). P = Forward Control Chassis. M = Motor Home.

MEDIUM-HEAVY CODES: XNT = Low Cab Forward. D = Conventional Cab. S = School Bus. W = 4-Wheel Drive.

AR=Use as Required

=New Part Number

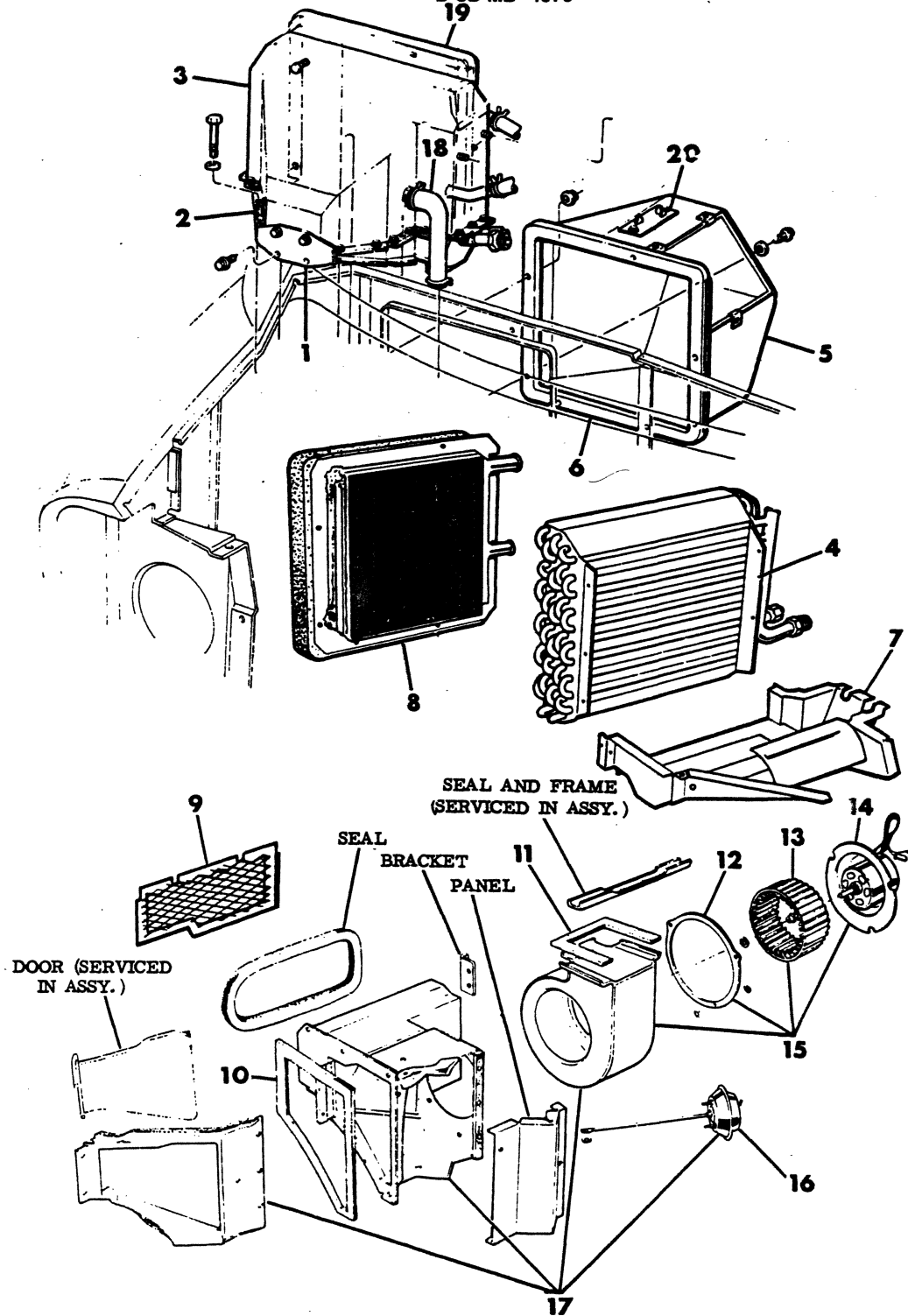
Printed in U.S.A.

June, 1982

8324 300A

AIR CONDITIONING EVAPORATOR, CONTROLS, MOTOR AND HOUSING

B-CB-ME 1978



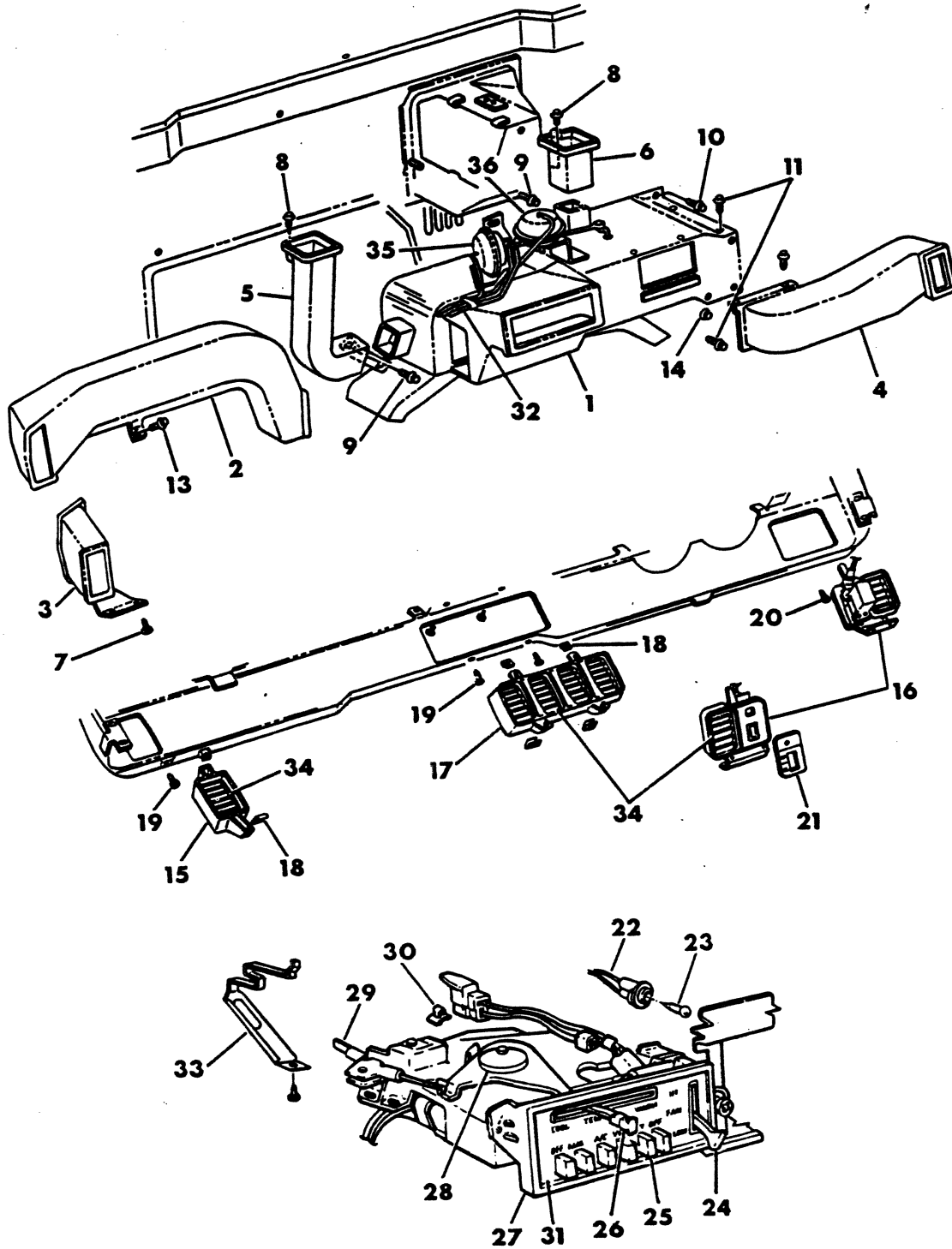
ITEM	PART NUMBER	QTY	MODEL	DESCRIPTION
AIR CONDITIONING EVAPORATOR, CONTROLS, MOTOR AND HOUSING B-CB-MB 1978				
1	3489 300	1		BRACKET and Seal
2	3441 868	1		RELAY w/SEAL, Vacuum Time Delay
3	3895 793	1		HOUSING ASSY, Evaporator Upper
4	2911 114	1		COIL, Evaporator
5	4085 546	1		DUCT Assy
6	2911 161	1		SEAL, Unit Mtg. (to Dash)
	3489 208	1		SEAL, A/C & Htr. Duct to Dash (Not Shown)
7	2911 185	1		HOUSING, Lower
8	3489 270	1		CORE, Air Cond. and Heater
9	3489 277	1		GRILLE, Recir.
10	2911 162	1		SEAL, Unit Mtg. (to Cowl)
11	2911 170	1		SEAL, Blower Housing Mtg.
12	2911 171	1		SEAL, Blower Motor Mtg.
13	3420 614	1		WHEEL, Heater Blower
14	3514 382	1		MOTOR, Blower
15	2911 165	1		BLOWER ASSY.
	2837 680	1		CLAMP, Blower Motor Mtg. (not shown)
	2521 305	1		SEAL, Housing to Scroll
16	2911 177	1		ACTUATOR, Fresh Air and Recir. Door Vac.
17	2911 116	1		BLOWER and Fresh Air Pkg. Complete
	2911 200	1		HOUSING ASSY., Fresh Air and Recir.
18	3489 273	1		TUBE
19	3489 262	1		SPACER, A/C and Heater Mtg. to Dash
	2097 131	1		HOSE, A/C and Htr. Drain (not Shown)
	4085 252	1		RESISTOR, Blower Motor
	2837 632	1		SEAL, Recirc. Hsg. to Scroll (Not Shown)

LIGHT	A = All Sport Utility (Ramcharger).	B = All Compact Models.	D = Conventional Cab.
DUTY	AD = 2 Wheel Drive Only (Ramcharger).	CB-MB = Compact Front Section Only.	W = Conventional Cab 4 Wheel Drive.
CODES:	AW = 4 Wheel Drive Only (Ramcharger).	P = Forward Control Chassis.	M = Motor Home.
MEDIUM-HEAVY CODES:	XNT = Low Cab Forward.	D = Conventional Cab.	S = School Bus. W = 4-Wheel Drive.

AR=Use as Required # =New Part Number Printed in U.S.A. June, 1982

8324 400A

AIR CONDITIONING AND DUCTS B-CB-MB 1978



ITEM	PART NUMBER	QTY	MODEL	DESCRIPTION
AIR CONDITIONING AND DUCTS				
B-CB-MB 1978				
1	4085 415	1		DUCT ASSY.
2	4085 551	1		DUCT w/SEAL, Left
3	4085 552	1		Left, Extension
4	4085 553	1		Right
5	4085 058	1		TUBE, A/C and Htr. Defrost, LT.
6	4034 733	1		TUBE, A/C and Htr. Defrost, RT.
7		2		SCREW (8 - 18 x 1/2)
8		2		SCREW (10 - 16 x 1/2)
9	6030 039	2		SCREW (1/4 - 14 x 5/8)
10		2		SCREW (10 - 16 x 1 1/2)
11		2		SCREW (10 - 16 x 5/8)
12		2		SCREW (10 - 16 x 1/2)
13		2		SCREW (8 - 18 x 5/8)
14	6025 002	2		NUT w/WA. (10 - 24)
15	4034 352	2		OUTLET, A/C Assy. RT.
16	4034 881	1		OUTLET, A/C Assy. LT. (Inter. Wipe)
17	4034 350	1		OUTLET, A/C Assy. Center
	4114 167	1		SEAL, A/C and Htr. Outlet, Center
18	6028 430	1		NUT (8 - 18)
19		1		SCREW (8 - 18 x 3/8)
20	9414 712	1		SCREW (8 - 18 x 1/2)
21		1		INSERT (Refer to Group 8)
22	3502 266	1		SOCKET ASSY., Control Illum.
23	273 987	1		BULB, Socket
24	3846 303	1		SWITCH, A/C and Htr. Blower Control
25	3846 091	1		SWITCH, Cont. Vacuum, 6 P/Button
26	3846 082	1		KNOB, Control Lever
	3846 338	1		LEVER, A/C and Htr. Temp. Control
27	3846 345	1		CONTROL ASSY., A/C and Heater
28	2820 453	1		CLIP, Lever Retaining
29	4085 420	1		CABLE, Temp. Control
	6031 132	1		CLIP, A/C and Htr. Temp. Control Cable
30	6003 464	1		CLIP, Control Cable
31	4034 243	1		INSERT, Control Bezel
	4085 065	1		BEZEL, Control
32	3780 508	1		HOSE, 1/8" I.D. (Serv. Roll Stock)
	6015 778	1		CLIP, Vac. Supply Hose Ext.
	3780 794	1		TUBE (Rough Stock)
33		1		BRACKET, Control Mtg.
34	3503 739	AR		LOUVERS, A/C Outlet
	1960 130	1		BUMPER, A/C and Defroster Door
	4034 730	1		SHAFT, Defroster Door
35	4034 734	1		ACTUATOR, A/C Door Vacuum
36	4034 735	1		ACTUATOR, Defroster Door Vacuum
	3846 885	1		SWITCH, A/C Temp. Sensing
37	3846 992	1		RESISTOR, A/C and Htr. Blower Mtr., 4 Prong

LIGHT A = All Sport Utility (Ramcharger).

B = All Compact Models.

D = Conventional Cab.

DUTY AD = 2 Wheel Drive Only (Ramcharger).

CB-MB = Compact Front Section Only.

W = Conventional Cab 4 Wheel Drive.

CODES: AW = 4 Wheel Drive Only (Ramcharger).

P = Forward Control Chassis.

M = Motor Home.

MEDIUM-HEAVY CODES: XNT = Low Cab Forward. D = Conventional Cab. S = School Bus. W = 4-Wheel Drive.

AR=Use as Required

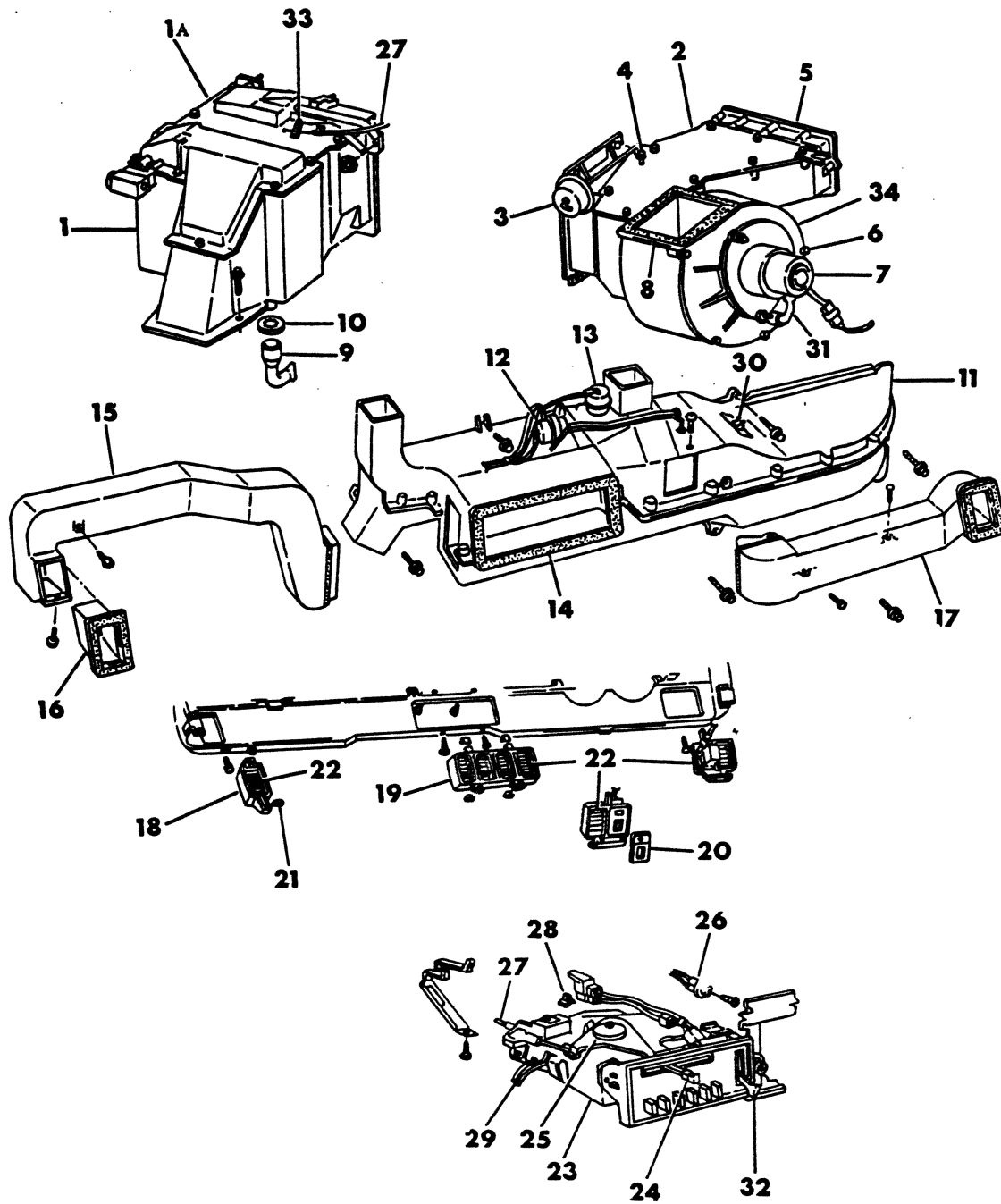
= New Part Number

Printed in U.S.A.

June, 1982

8324 425A

AIR CONDITIONING AND DUCTS
B-CB-MB 1979-80-81



ITEM	PART NUMBER	QTY	MODEL	DESCRIPTION
AIR CONDITIONING AND DUCTS				
B-CB-MB 1979-80-81				
1		1		EVAPORATOR COIL, HOUSING ASSY. (Service Component Parts)
Contains Following:				
	4114 060	1		HOUSING, A/C Evaporator Coil
1A	4114 053	1		COVER w/SEAL, Evaporator Housing
	4106 138	1		CORE, A/C and Heater
	4114 051	1		SEAL, A/C Evap. Coil Hsg. to Dash
	4114 067	1		COIL, A/C Evaporator
	3847 116	1		SEAL, A/C Evaporator Coil, Ret Bend End
	3503 948	2		SEAL, A/C Evaporator Coil, Hair Pin End
2	4114 036	1		HOUSING w/STUD, A/C Recirculating
	4114 033	1		COVER w/SEAL, Recirc. Housing
3	4114 038	1		ACTUATOR, A/C Recirc. Door
	4114 039	1		DOOR w/SEAL, A/C Recirculator
4	219 462	1		NUT, A/C Recirc. Door Lever Ret.
	4114 095	1		LEVER, A/C Recirc. Door
5	4114 096	1		SEAL, A/C Recirc. Hsg. to Dash
6	6025 402	3		NUT, A/C Motor Mtg.
	6006 065	6		BUSHING, A/C Motor Mtg.
7	4131 479	1		MOTOR ASSY., A/C Blower
	4055 018	1		INSULATOR, A/C Motor Terminal
	3843 386	1		TERMINAL, A/C Motor
	3503 036	1		SEAL, A/C Motor to Scroll Cover
	3503 859	1		WHEEL, A/C Scroll
	2837 680	1		CLAMP, A/C Wheel to Motor
8	4114 052	1		SEAL, A/C Evap. Coil Hsg. to Recirc. Hsg.
9	3503 133	1		TUBE, A/C Unit Drain
10	6028 944	1		RETAINER, A/C Unit Drain Tube
11	4085 769	1		DUCT ASSY., A/C and Htr. Dist. Comp.
	4114 451	1		DOOR, A/C Blend Air
	6003 464	1		CLIP, Blend Air Door Control Cable Mtg.
	4114 087	1		LEVER w/PIN, A/C Blend Air Door Control
	120 375	1		NUT, A/C Blend Air Door Lvr. Ret.
	6029 586	1		U-NUT, Duct Upper Assy. to Lwr. Mtg.
	9415 163	1		SCREW, Duct, U-Nut Assy. to Lwr. Mtg.
12	4114 382	1		ACTUATOR, A/C and Htr. A/C Door Vac.
13	4085 786	1		ACTUATOR, A/C and Htr. Defr. Door Vac.
14	4114 167	1		SEAL, A/C and Htr. Outlet Center
15	4085 933	1		DUCT w/SEAL, A/C Outlet, LT.
16	4085 931	1		DUCT w/SEAL, A/C Outlet, LT. Ext.
17	4085 932	1		DUCT w/SEAL, A/C Outlet, RT.
18	4034 352	1		BEZEL, A/C Outlet, RT.
19	4034 350	1		BEZEL, A/C Outlet, center
20	4114 235	1		BEZEL, A/C Outlet, w/Wiper and Washer
	9414 712	6		SCREW, A/C Outlet Assy. Mtg.
21	6028 430	6		U-NUT, A/C Outlet Assy. Mtg.
22	3503 739	6		LOUVER, A/C Outlet
23		1		CONTROL, A/C and Htr.
	3847 136	1		CONTROL, Base w/Air. Cond. And Htr. 1979-80
	3847 669	1		1981

LIGHT A = All Sport Utility (Ramcharger).

B = All Compact Models.

D = Conventional Cab.

DUTY AD = 2 Wheel Drive Only (Ramcharger).

CB-MB = Compact Front Section Only.

W = Conventional Cab 4 Wheel Drive.

CODES: AW = 4 Wheel Drive Only (Ramcharger).

P = Forward Control Chassis.

M = Motor Home.

MEDIUM-HEAVY CODES: XNT = Low Cab Forward. D = Conventional Cab. S = School Bus. W = 4-Wheel Drive.

AR=Use as Required

= New Part Number

Printed in U.S.A.

June, 1982

1978-81 LIGHT DUTY TRUCK PARTS CATALOG

HEATER AND AIR

ITEM	PART NUMBER	QTY	MODEL	DESCRIPTION
AIR CONDITIONING AND DUCTS				
B-CB-MB 1979-80-81				
	3846 825	1		SWITCH, A/C and Htr. 6 P/Button Control 1979
	4163 937	1		1980
	3847 742	1		1981
	6006 041	1		SCREW, P/Button Control Switch Mtg.
24	3847 014	1		LEVER, A/C and Htr. Temp. Control
	3846 082	1		KNOB,Temp. Control Lever 1979-80
	3847 447	1		1981
25	2820 453	1		CLIP, Temp. Control Lever
	3503 317	2		PIN, Air Cond. And Htr. Cont. Temp Lever 1980-81
26	4131 388	1		SOCKET, A/C and Htr. Control Illum.
	4055 018	1		INSULATOR
	9415 969	1		BULB, Control Illum. Socket
27	4114 450	1		CABLE, Temp. Control
	4114 450	1		W/AUX. Air Cond. and RR. Htr.
28	6029 889	1		RETAINER, Temp. Control Cable, Control End
29	4085 823	1		HOSE w/CONN., A/C and Htr. Vac. Control
	3780 508	1		HOSE, Vacuum 1/8" (Serv. Roll Stock)
	3441 609	1		CHECK VALVE, A/C & Htr. Vacuum Hose Extension (Not Shown)
	6015 778	2		CLIP, Vacum Control Hose Mtg.
30	4114 599	1		RESISTOR, A/C and Htr. Blower Motor, 5 Prong
31	3503 040	1		TUBE, A/C Motor Cooling
32	3846 303	1		SWITCH, A/C and Htr. Blower Control
	4176 100	1		1981
	3847 786	1		KNOB,Blower Switch 1981
33	6031 132	1		CLIP, Temp. Control Cable
34	4114 044	1		BACK PLATE, A/C Recirc. Motor
	4106 143	1		SWITCH, A/C Temp. Sensing w/225 Eng. (Refer to Illus. 24-250)

LIGHT	A = All Sport Utility (Ramcharger).	B = All Compact Models.	D = Conventional Cab.
DUTY	AD = 2 Wheel Drive Only (Ramcharger).	CB-MB = Compact Front Section Only.	W = Conventional Cab 4 Wheel Drive.
CODES:	AW = 4 Wheel Drive Only (Ramcharger).	P = Forward Control Chassis.	M = Motor Home.

MEDIUM-HEAVY CODES: XNT = Low Cab Forward. D = Conventional Cab. S = School Bus. W = 4-Wheel Drive.

AR=Use as Required

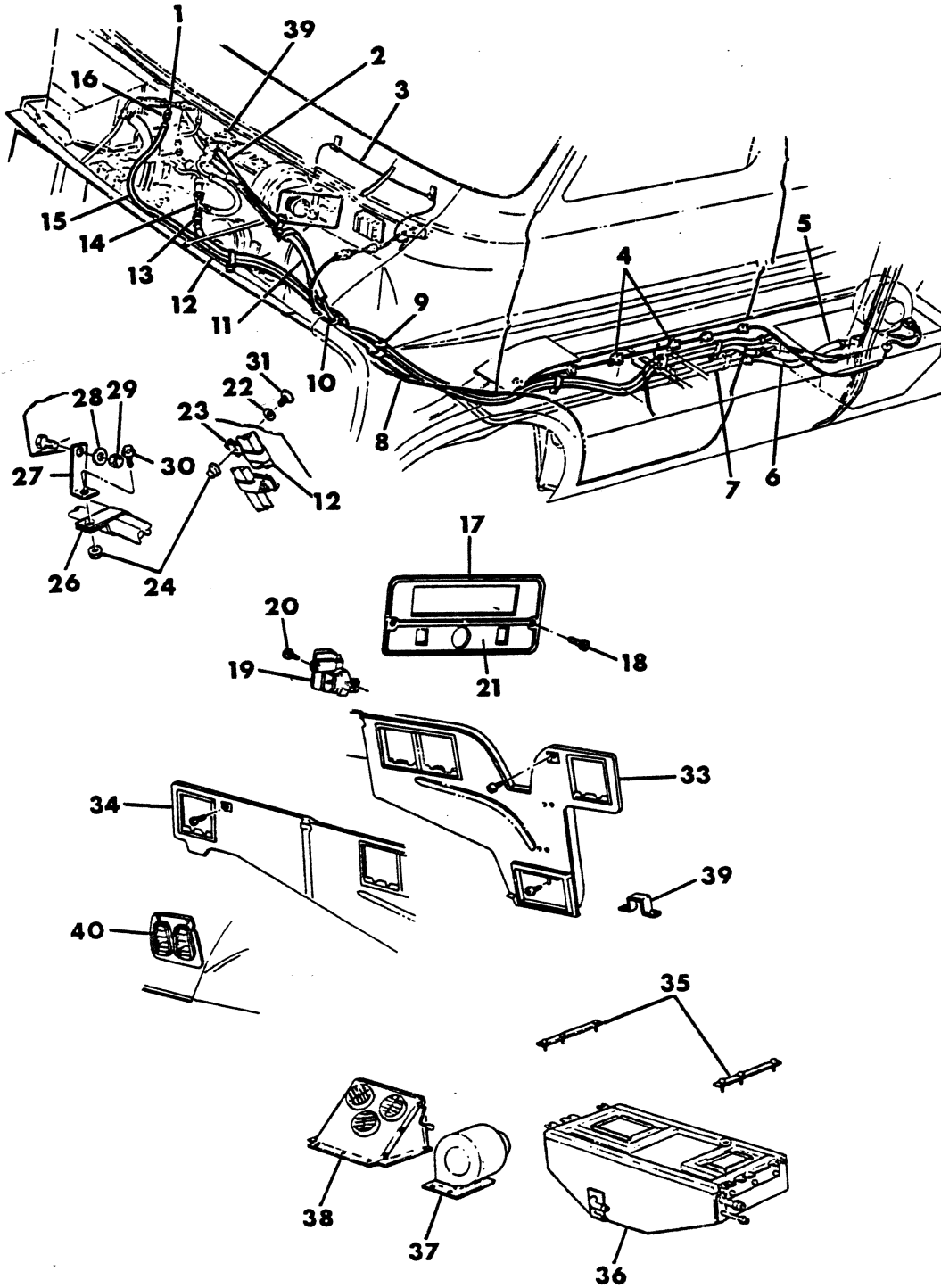
=New Part Number

Printed in U.S.A.

June, 1982

REAR COMPARTMENT AIR CONTIONING AND HEATER B-CB

8324 500



ITEM	PART NUMBER	QTY	MODEL	DESCRIPTION
REAR COMPARTMENT AIR CONTIONING AND HEATER B-CB				
1	3895 427			TEE, A/C Liquid
2				HOSE, 32" Long, Htr. Plumbing
3	4034 774			WIRING ASSY., Instr. Panel 1978
	4114 190	1		1979-80
4		6		CLIPS
5	1315 466			HOSE, 20" x 5/8 Dia. (Serv. Roll Stock)
6	2936 388			HOSE, 20" x 1/2 Dia. (Serv. Roll Stock)
7				TUBE ASSY.
8				WIRING ASSY.
9				CLAMP
10				CLAMP
11	2936 388			HOSE, 32"x 1/2 Dia. (Serv. Roll Stock)
12	3895 358			HOSE ASSY. A/C Suction 1978
13	2219 385			"O" RING, A/C Suction Hose to Suction Tube
14	3895 711			TEE, A/C Suction Hose 1978
	3895 695			CLAMP, Suction Hose to Tee 1978
15	3895 359	1		HOSE ASSY., A/C Liquid 1978
16	2219 383			"O" RING, A/C Liquid Hose
17	4085 065	1		BEZEL, A/C and Htr. w/Cig. Lighter 1978
	4085 067	1		BEZEL, A/C and Htr. w/Rr. A/C Switch and Cig. Lighter 1978
	4085 821	1		BEZEL, A/C and Htr. w/Cig. Lighter 1979-80
	4085 827	1		BEZEL, Rr. A/C and Htr. w/Cig. Lighter 1979-80
	4085 978			BEZEL, Rr. Defroster and Cig. Lighter 1979-80
	4085 979			BEZEL, Rr. A/C and Htr., Rr. Defro. and Cig. Lighter 1979-80
18		2		SCREW (8 - 32 x 1/2)
19	4034 364	1		SWITCH, Blwr. Aux. A/C and Htr.
20	9414 712	3		SCREW (8 - 18 x 1/2)
21	4034 243	1		INSERT, Bezel w/Cig. Lighter 1978
	4034 427	1		INSERT, Bezel w/Cig. Lighter, A/C or Htr. 1978
22		1		WASHER
23	6024 217	1		RETAINER
24	118 614	1		NUT (5/16 - 18)
26		1		CLAMP
27	2832 449	1		BRACKET
28		1		WASHER
29	152 344	1		NUT (3/8 - 16)
30	181 064	1		BOLT (5/16 - 18 x 5/8)
31	6022 282	1		SCREW (5/16 - 18)
33	4034 359	1		DUCT w/SEAL, UP to 6-1-1979
	4114 737	1		AFTER 6-1-1979
34	4085 061	1		DUCT, Extension (15 Passenger Wagon) UP to 6-1-1979
	4114 738	1		AFTER 6-1-1979
35	3895 417	2		PLATE, Mtg.
	6028 040	4		NUT, Mounting Plate Retg.
36		1		AUXILIARY, A/C and Htr. (Refer to Illus. 24- 600)
37	4085 586	1		BLOWER AND MOTOR ASSY. (Refer to Illus. 24- 600)
38	4034 786	1		FLOOR REGISTOR ASSY., Aux. Rear A/C
39		1		SHIELD
40	3502 934	AR		LOUVER ASSY.

LIGHT A = All Sport Utility (Ramcharger).

B = All Compact Models.

D = Conventional Cab.

DUTY AD = 2 Wheel Drive Only (Ramcharger).

CB-MB = Compact Front Section Only.

W = Conventional Cab 4 Wheel Drive.

CODES: AW = 4 Wheel Drive Only (Ramcharger).

P = Forward Control Chassis.

M = Motor Home.

MEDIUM-HEAVY CODES: XNT = Low Cab Forward. D = Conventional Cab. S = School Bus. W = 4-Wheel Drive.

AR=Use as Required

=New Part Number

Printed in U.S.A.

June, 1982

1978-81 LIGHT DUTY TRUCK PARTS CATALOG

HEATER AND AIR

ITEM	PART NUMBER	QTY	MODEL	DESCRIPTION
REAR COMPARTMENT AIR CONTIONING AND HEATER B-CB				
	153 459	6		SCREW, Outlet Bezel And Louver Mtg.
	4085 528	AR		BEZEL w/SEAL, Aux. A/C Outlet
	6031 529	6		CLIP, U-Type Aux. A/C Outlet Mtg.
	4114 219	1		PLATE, Aux. A/C and Htr. Unit Bottom
	2958 954	1		SEAL, Aux. A/C and Htr. Tubing Clamp Pkg.

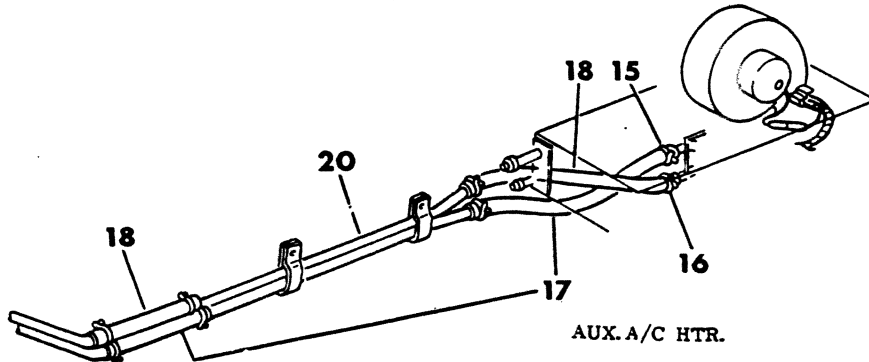
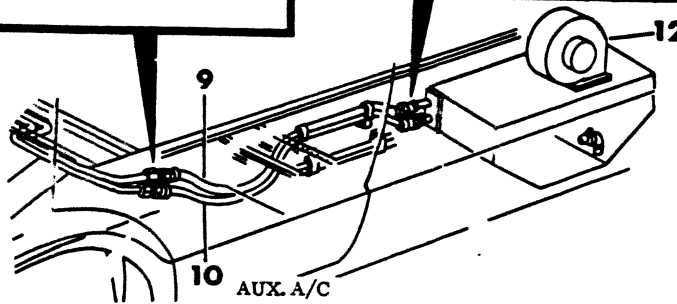
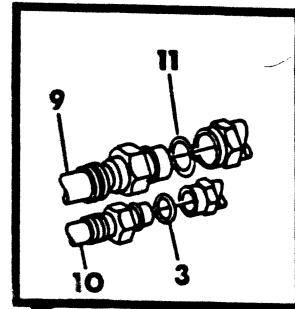
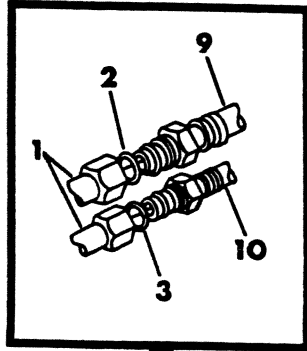
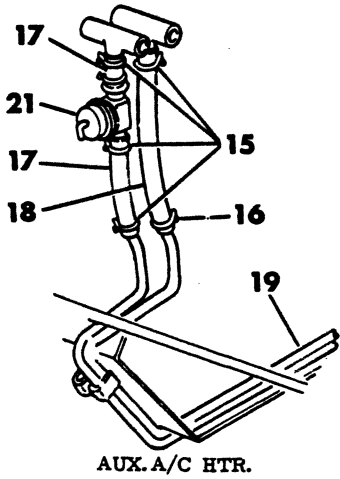
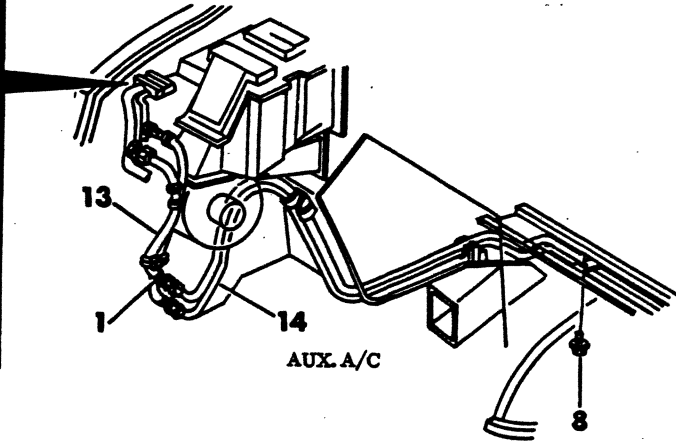
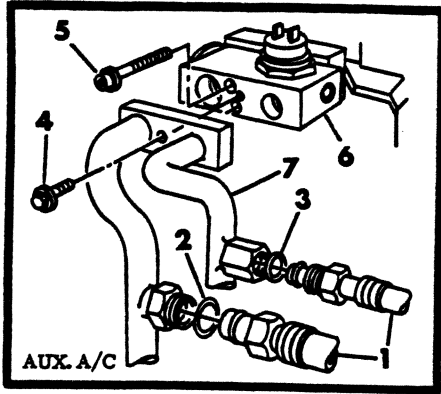
LIGHT	A = All Sport Utility (Ramcharger).	B = All Compact Models.	D = Conventional Cab.
DUTY	AD = 2 Wheel Drive Only (Ramcharger).	CB-MB = Compact Front Section Only.	W = Conventional Cab 4 Wheel Drive.
CODES:	AW = 4 Wheel Drive Only (Ramcharger).	P = Forward Control Chassis.	M = Motor Home.

MEDIUM-HEAVY CODES: XNT = Low Cab Forward. D = Conventional Cab. S = School Bus. W = 4-Wheel Drive.

AR=Use as Required # = New Part Number Printed in U.S.A. June, 1982

8324 550A

AUXILIARY REAR AIR AND HEATER PLUMBING B1-2-3



ITEM	PART NUMBER	QTY	MODEL	DESCRIPTION
AUXILIARY REAR AIR AND HEATER PLUMBING				
B1-2-3				
1	4114 743	1		TUBE AND HOSE ASSY., A/C Suction and Liquid
	4085 813	1		HOSE, A/C Suction and Liquid
2	2219 385	2		"O" RING, Suction Hose
3	5210 380	3		"O" RING, LIQUID Hose
4	6100 314	1		SCREW w/WA. (M8 x 1.18")
5	6030 267	2		SCREW w/WA. (1/4-20 x 2")
6	4177 000	1		"H" VALVE, A/C Expansion 1979-80
	4176 999	1		1981
7	4114 170	1		HOSE ASSY., A/C Suction and Liquid (Unified)
	4163 908			1981
8	9413 953	2		SCREW (10-16 x 5/8")
9	4085 815	1		HOSE ASSY., A/C Suction, Rear 1979-80
	4163 983	1		1981
10	4085 817	1		HOSE ASSY., A/C Liquid, Rear 1979-80
	4163 984	1		1981
11	2521 172	1		"O" RING, Suction Hose
12				AUX. A/C and Htr., (Refer to Illus. 24- 600)
13	4085 814	1		HOSE ASSY., A/C Suction, Front
14	4085 816	1		HOSE ASSY. A/C Liquid, Front 1978-79
	4114 746	1		1980
15	272 848	AR		CLAMP, Hose 1/2"
16	870 469	AR		CLAMP, Hose 5/8"
17	2936 388	1		HOSE, A/C and Htr. 1/2" (Serv. Roll Stock)
18	1315 466	1		HOSE, A/C and Htr. 5/8" (Serv. Roll Stock)
19	4085 857	1		TUBE ASSY., A/C and Htr., Front 1979-80
	4163 985	1		1981
20	4114 172	1		TUBE ASSY., A/C and Htr., Rear
21	4034 436	1		VALVE, A/C and Htr. Water (Vac. On-Off) (up to 1-2-80)
	4163 906	1		(After 1-2-80)
	4114 651	1		TUBING, Aux. Air Cond. Liquid (Not Shown)
	4106 143	1		SWITCH, A/C Temp Sensing w/ 225 Eng. 1981
	5210 377	1		SWITCH, Low Pressure Cut off
	3441 105	1		SEAL, Low Pressure Switch

LIGHT	A = All Sport Utility (Ramcharger).	B = All Compact Models.	D = Conventional Cab.
DUTY	AD = 2 Wheel Drive Only (Ramcharger).	CB-MB = Compact Front Section Only.	W = Conventional Cab 4 Wheel Drive.
CODES:	AW = 4 Wheel Drive Only (Ramcharger).	P = Forward Control Chassis.	M = Motor Home.
MEDIUM-HEAVY CODES:	XNT = Low Cab Forward.	D = Conventional Cab.	S = School Bus. W = 4-Wheel Drive.

AR=Use as Required

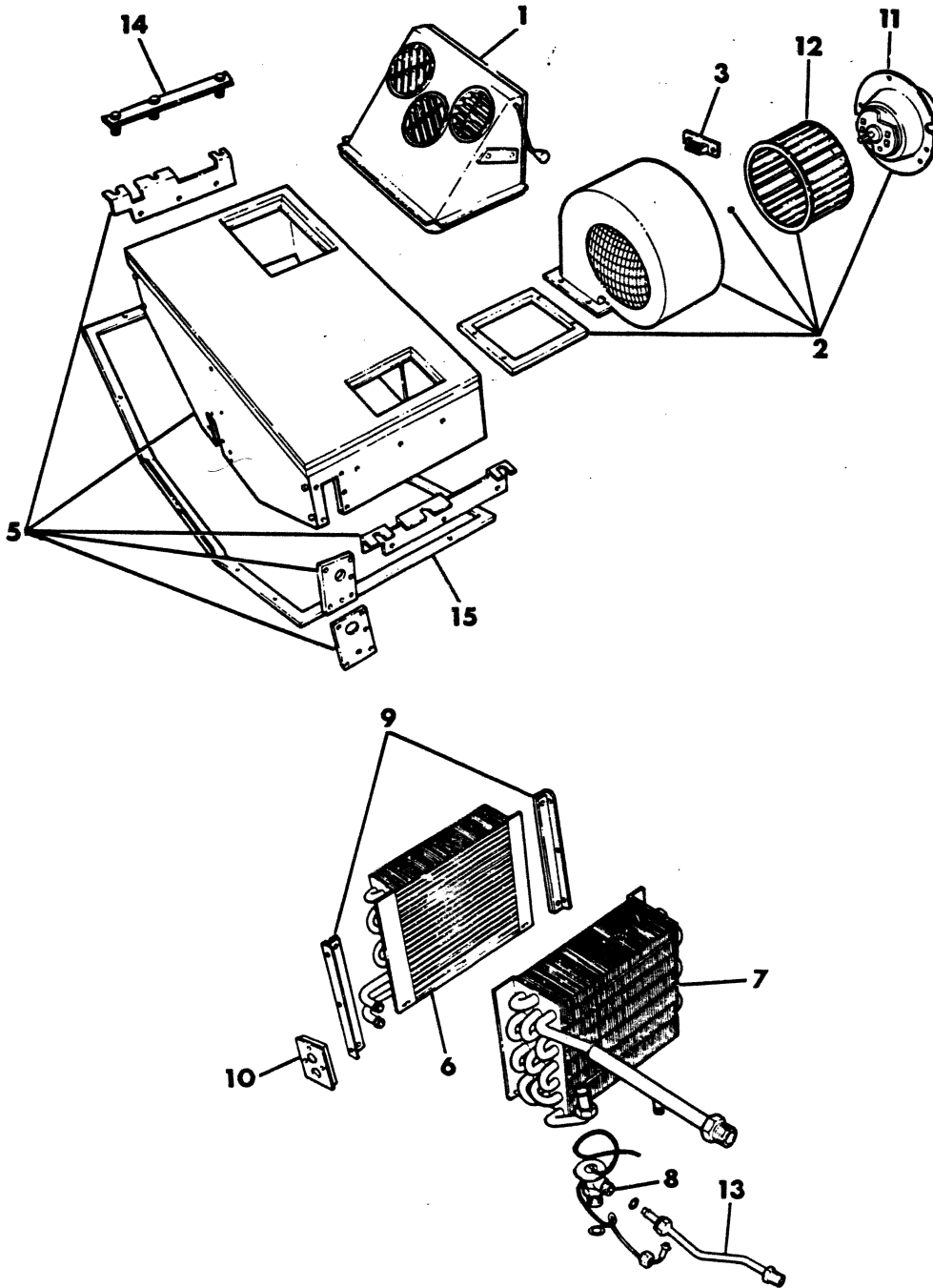
=New Part Number

Printed in U.S.A.

June, 1982

8324 600B

REAR AIR CONDITIONING AND HEATER
B MODEL



ITEM	PART NUMBER	QTY	MODEL	DESCRIPTION
REAR AIR CONDITIONING AND HEATER B MODEL				
1	4034 786	1		FLOOR REGISTER ASSY., Aux. A/C
2	4085 586	1		MOTOR ASSY., Blower
3	3895 890	1		RESISTOR, Blower Motor
5	4114 218	1		HOUSING, A/C and Htr. Unit
6	3895 362	1		CORE, Aux. Heater
7	3895 418	1		COIL, Aux. A/C and Evaporator
8	3895 425	1		VALVE ASSY., Expansion
	4163 770	1		1981
9		1		BRACKET, Heater Core (Not Serviced)
10		1		COVER, Housing (Not Serviced)
11	3895 797	1		MOTOR, Aux. A/C and Htr., Blower (Only)
12	3895 891	1		WHEEL (Only)
13	4114 651	1		TUBE, Rr. A/C Expansion Valve, 7-1/2" Lg.
	2936 926	1		TUBE, Aux. A/C and Heater Drain (Not Shown)
	2448 770	1		CLAMP
14	3895 417	2		PLATE, Aux. Unit Mtg.
15	4114 219	1		COVER, Aux. A/C and Htr. Hsg., Bottom

LIGHT	A = All Sport Utility (Ramcharger).	B = All Compact Models.	D = Conventional Cab.
DUTY	AD = 2 Wheel Drive Only (Ramcharger).	CB-MB = Compact Front Section Only.	W = Conventional Cab 4 Wheel Drive.
CODES:	AW = 4 Wheel Drive Only (Ramcharger).	P = Forward Control Chassis.	M = Motor Home.
MEDIUM-HEAVY CODES: XNT = Low Cab Forward. D = Conventional Cab. S = School Bus. W = 4-Wheel Drive.			

AR=Use as Required

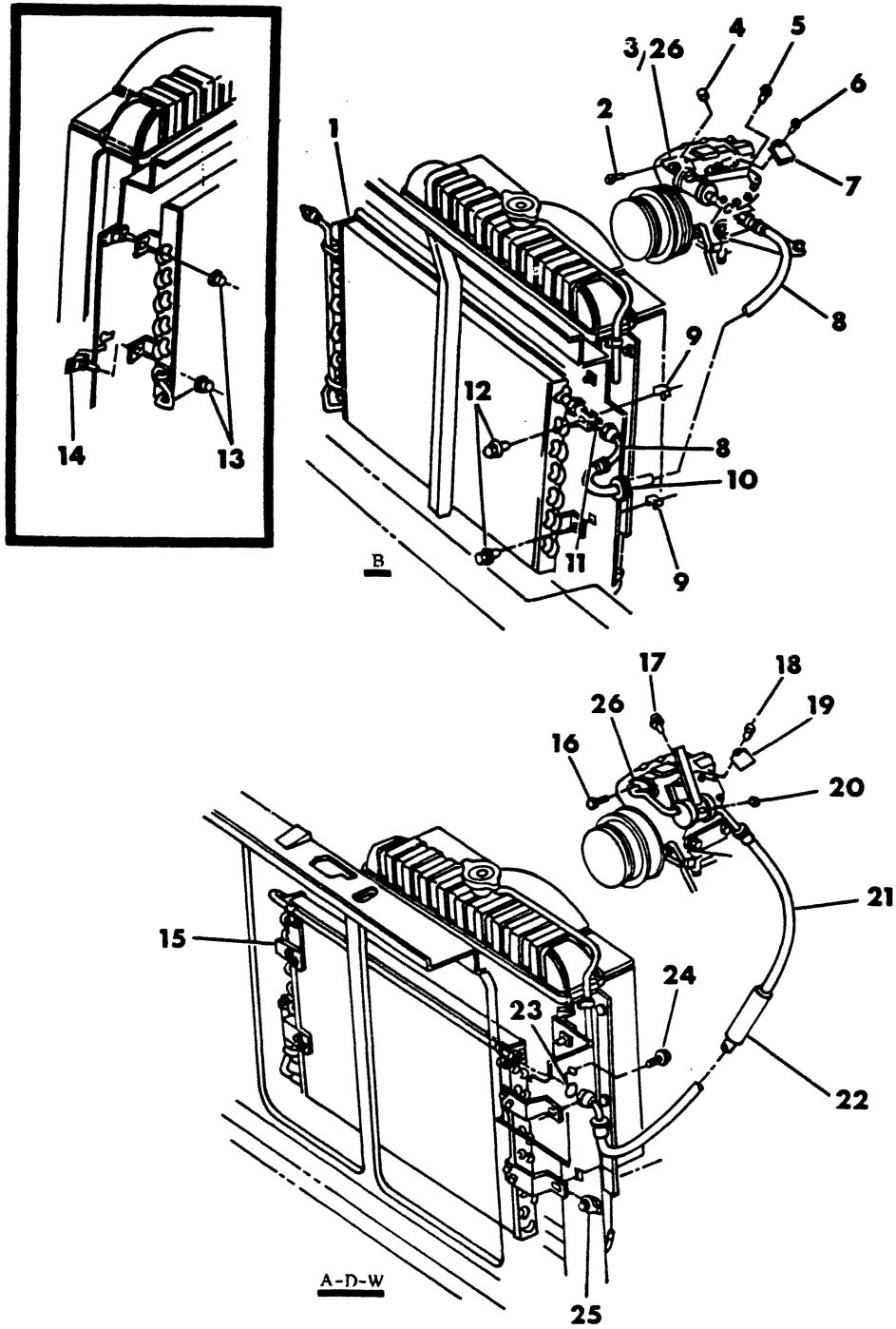
=New Part Number

Printed in U.S.A.

June, 1982

8324 700B

AIR CONDITIONING CONDENSER & DISCHARGE HOSE A-B-D-W-RD



ITEM	PART NUMBER	QTY	MODEL	DESCRIPTION
AIR CONDITIONING CONDENSER & DISCHARGE HOSE A-B-D-W-RD				
1	4031 287	1	B-CB-MB	CONDENSER 1978
	4114 112	1	B-CB-MB	1979
	4163 924	1	B-CB-MB	1980
	4163 920	1	B-CB-MB	1981
2		2	B-CB-MB	SCREW
3	4086 295	1	B-CB-MB	MUFFLER w/FITTING, Discharge
4	3704 531	1	B-CB-MB	CAP, Muffler w/400-440 Eng. 1978-79
	3704 531	1	B-CB-MB	All Eng. 1980-81
	3847 576	1	B-CB-MB	VALVE, A/C Discharge Line Check (Not Shown)
5		1	B-CB-MB	SCREW (3/8-16 x .88)
6		1	B-CB-MB	SCREW (8-24 x 1/4)
7		1	B-CB-MB	PLATE
8	4115 246	1	B-CB-MB	HOSE ASSY., Discharge 1978
9		AR	B-CB-MB	NUT, Clinch
10		1	B-CB-MB	GROMMET
11	2219 384	2	B-CB-MB	"O" RING, Discharge Hose
12	181 063	AR	B-CB-MB	SCREW (1/4-20 x 3/4)
13	6025 004	2	B-CB-MB	NUT (1/4-20)
14	6030 223	2	B-CB-MB	BOLT (1/4-20 x 7/8)
15	4036 693	1	A-D-W-RD	CONDENSER, A/C 1978
	4088 791	1	A-D-W-RD	1979-80
	4112 576	1	A-D-W-RD	1981
	4115 447	1	D-W	w/DIESEL Eng.
	4039 596	1	A-D-W-RD	HOSE, A/C Condenser to Rec. Drier
16		2	A-D-W-RD	SCREW
17	181 112	1	A-D-W-RD	SCREW (3/8-16 x 7/8)
18		1	A-D-W-RD	SCREW (8-32 x 25)
19		1	A-D-W-RD	PLATE, Spec.
20	3704 531	1	A-D-W-RD	CAP, Muffler Charging Valve
	3847 576	1	A-D-W-RD	VALVE, A/C Discharge Line Check (Not Shown)
21	4089 377	1	A-D-W-RD	HOSE ASSY., Discharge All Eng. 1978
	4089 377	1	A-D-W-RD	w/318-360-440 Eng. 1979-80
	4085 803	1	A-D-W	w/225 Eng. 1979
	4163 923	1	A-D-W	1980
	3847 147	2	A-B-D-W	PILOT, Air Cond. Compressor Disch. Fitting 1979-80-81
22	5210 322	1	A-D-W-RD	SLEEVE, Hose
23	181 065	1	A-D-W-RD	SCREW (1/4-20 x 7/8)
24	2219 384	1	A-D-W-RD	"O" RING, Discharge Hose
25	152 454	4	A-D-W-RD	U-NUT
26	3846 272	1	A-B-D-W-RD	GASKET, Muffler and Discharge Fitting Flange
	4115 448	2	D-W	BRACKET, A/C Condenser Mtg. w/DIESEL Eng.
	4086 333	2	D-W	SPACER, A/C Condenser Mtg. Brk., w/DIESEL Eng.

LIGHT	A = All Sport Utility (Ramcharger).	B = All Compact Models.	D = Conventional Cab.
DUTY	AD = 2 Wheel Drive Only (Ramcharger).	CB-MB = Compact Front Section Only.	W = Conventional Cab 4 Wheel Drive.
CODES:	AW = 4 Wheel Drive Only (Ramcharger).	P = Forward Control Chassis.	M = Motor Home.

MEDIUM-HEAVY CODES: XNT = Low Cab Forward. D = Conventional Cab. S = School Bus. W = 4-Wheel Drive.

AR=Use as Required

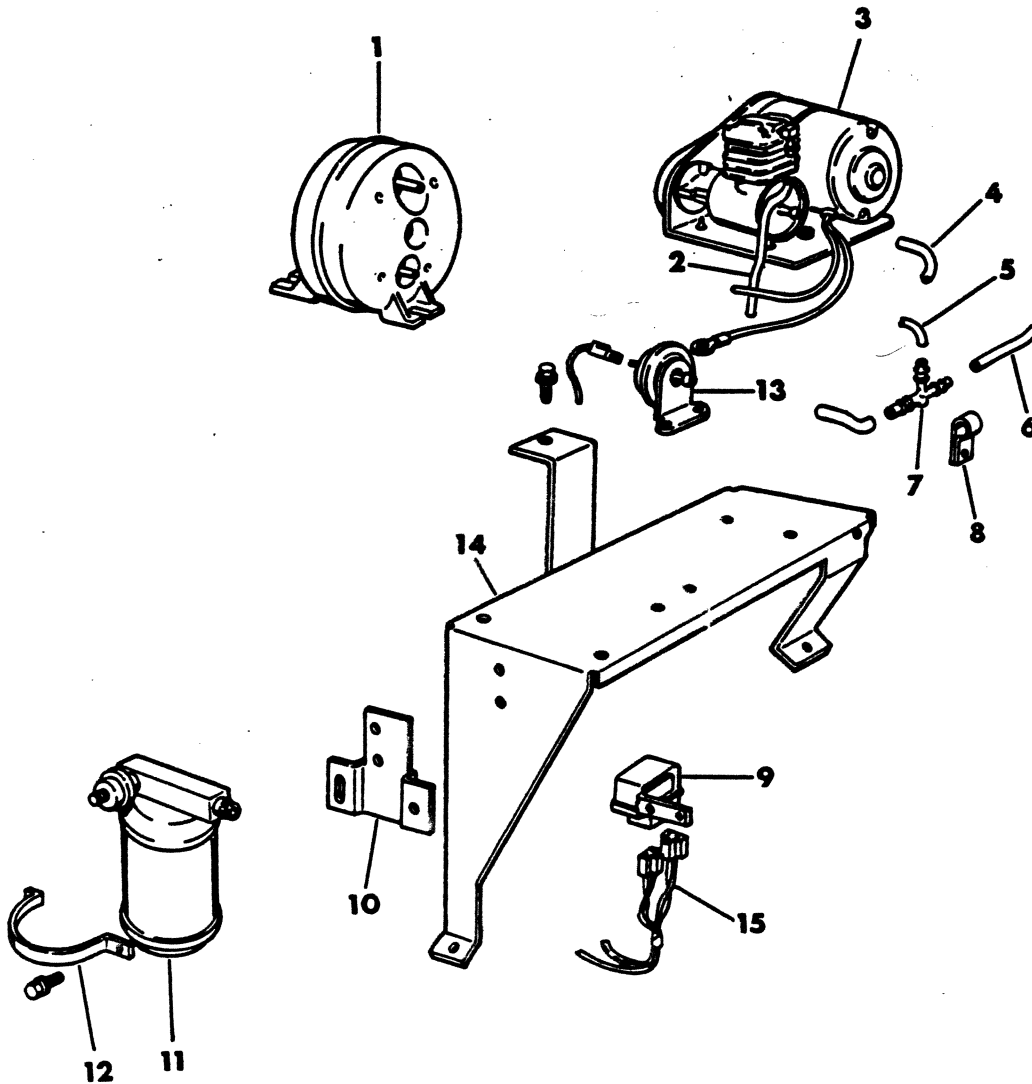
=New Part Number

Printed in U.S.A.

June, 1982

8324 775A

AIR CONDITIONING VACUUM PUMP
DIESEL ENGINE D-W



ITEM	PART NUMBER	QTY	MODEL	DESCRIPTION
AIR CONDITIONING VACUUM PUMP DIESEL ENGINE D-W				
1	2837 314	1	D-W	RESERVOIR, A/C Vac. Pump
2	4026 128	1	D-W	HOSE, Silencer 15"
3	4085 195	1	D-W	PUMP ASSY., A/C Vacuum
4	3744 936	AR	D-W	HOSE, 3/16" (Serv. Roll Stock)
5	3780 508	AR	D-W	HOSE, 1/8" (Serv. Roll Stock)
6	3780 508	AR	D-W	HOSE, 1/8" (Serv. Roll Stock)
7	3635 134	1	D-W	TEE, Connector
8	9413 545	1	D-W	CLIP, Suction Hose
9	3738 109	1	D-W	RELAY, Vac. Pump Switch 1978
	4111 576	1	D-W	1979
10	4114 133	1	D-W	BRACKET, Filter Drier Mtg.
11	3847 150	1	D-W	FILTER, Drier Assy.
12	3846 134	1	D-W	STRAP, Filter Mtg.
13	4114 679	1	D-W	SWITCH, A/C Vacuum Pump
14	4114 631	1	D-W	PLATE, Vacuum Pump Mtg.
15	4114 678	1	D-W	WIRING, Vac. Switch to Relay
	4114 630	1	D-W	RESTRICTOR, Vac. Pump Switch to Tee (Not Shown)
	4114 448	1	D-W	ADAPTER, Filter (Not Shown)
	4114 670	1	D-W	WIRING ASSY., A/C and Vac. Pump (Not Shown)

LIGHT	A = All Sport Utility (Ramcharger).	B = All Compact Models.	D = Conventional Cab.
DUTY	AD = 2 Wheel Drive Only (Ramcharger).	CB-MB = Compact Front Section Only.	W = Conventional Cab 4 Wheel Drive.
CODES:	AW = 4 Wheel Drive Only (Ramcharger).	P = Forward Control Chassis.	M = Motor Home.

MEDIUM-HEAVY CODES: XNT = Low Cab Forward. D = Conventional Cab. S = School Bus. W = 4-Wheel Drive.

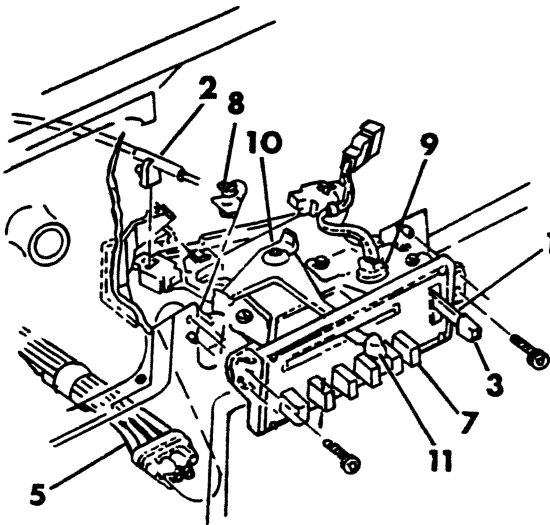
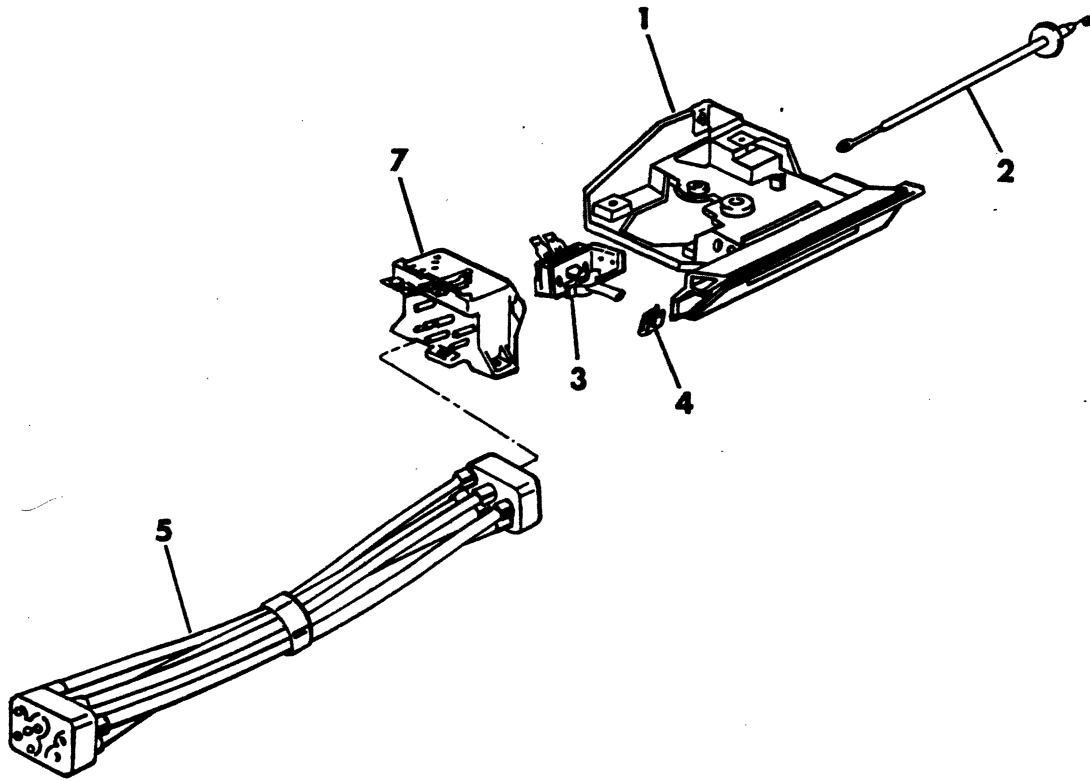
AR=Use as Required

= New Part Number

Printed in U.S.A.

June, 1982

HEATER AND AIR CONDITIONING CONTROLS
A-D-W-RD



ITEM	PART NUMBER	QTY	MODEL	DESCRIPTION
------	-------------	-----	-------	-------------

**HEATER AND AIR CONDITIONING CONTROLS
A-D-W-RD**

1	3635 788		A-D-W-RD	CONTROL ASSY., A/C and Htr.
1	3847 665			CONTROL BASE, w/A/C, HTR. and BI-LEVEL 1981
2	2809 041	1		CABLE w/Hsg., Temp. Control 1978
	4085 896	1		1979-80
	4163 955	1		1981
	2197 678	1		RETAINER, Temp. Cont. Cable, Water Valve End 1978
	6031 132	1		1979-80-81
	6029 889	1		RETAINER, Temp. Cont. Cable, Control End
	2884 656	1		CLIP, Control Cable Mtg.
3	3489 677	1		SWITCH, A/C and Htr. Blower Cont. 78-79-80
	4176 100	1		1981
4				CLIP (Not Serviced)
5	4034 473	1		EXTENSION, Vacuum Hose 78-79-80
	3847 622	1		1981
	3441 609	1		VALVE, Vacuum Hose Extension (Not Shown)
	4034 474	1		HOSE w/CONNECTOR, Control Vacuum
7	3502 414	1		SWITCH, A/C and Htr. Vac. Control 1978-79-80
	3847 512	1		W/6 Push Buttons W/Chrome
	3846 091	1		W/6 Push Buttons W/O Chrome
	2820 453	1		CLIP, A/C and Htr. Control Lever Pivot Pin
	3846 885	1		SWITCH, A/C Temp. Sensing w/225 and DIESEL Eng. 1978
	4106 143	1		1979-80-81
8	6029 889	1		RETAINER, Temp Cont Cable End 1981
9	4131 388	1		SOCKET, Lamp 1981
9	4055 018	1		INSULATOR, 1981
10	3847 014	1		LEVER, Cont. 1981
	2820 453	1		CLIP, Lever Retaining 1981
	3503 317	1		PIN, Lever Pivot 1981
11	3847 447	1		KNOB, Cont. Lever 1981

LIGHT	A = All Sport Utility (Ramcharger).	B = All Compact Models.	D = Conventional Cab.
DUTY	AD = 2 Wheel Drive Only (Ramcharger).	CB-MB = Compact Front Section Only.	W = Conventional Cab 4 Wheel Drive.
CODES:	AW = 4 Wheel Drive Only (Ramcharger).	P = Forward Control Chassis.	M = Motor Home.

MEDIUM-HEAVY CODES: XNT = Low Cab Forward. D = Conventional Cab. S = School Bus. W = 4-Wheel Drive.

AR=Use as Required

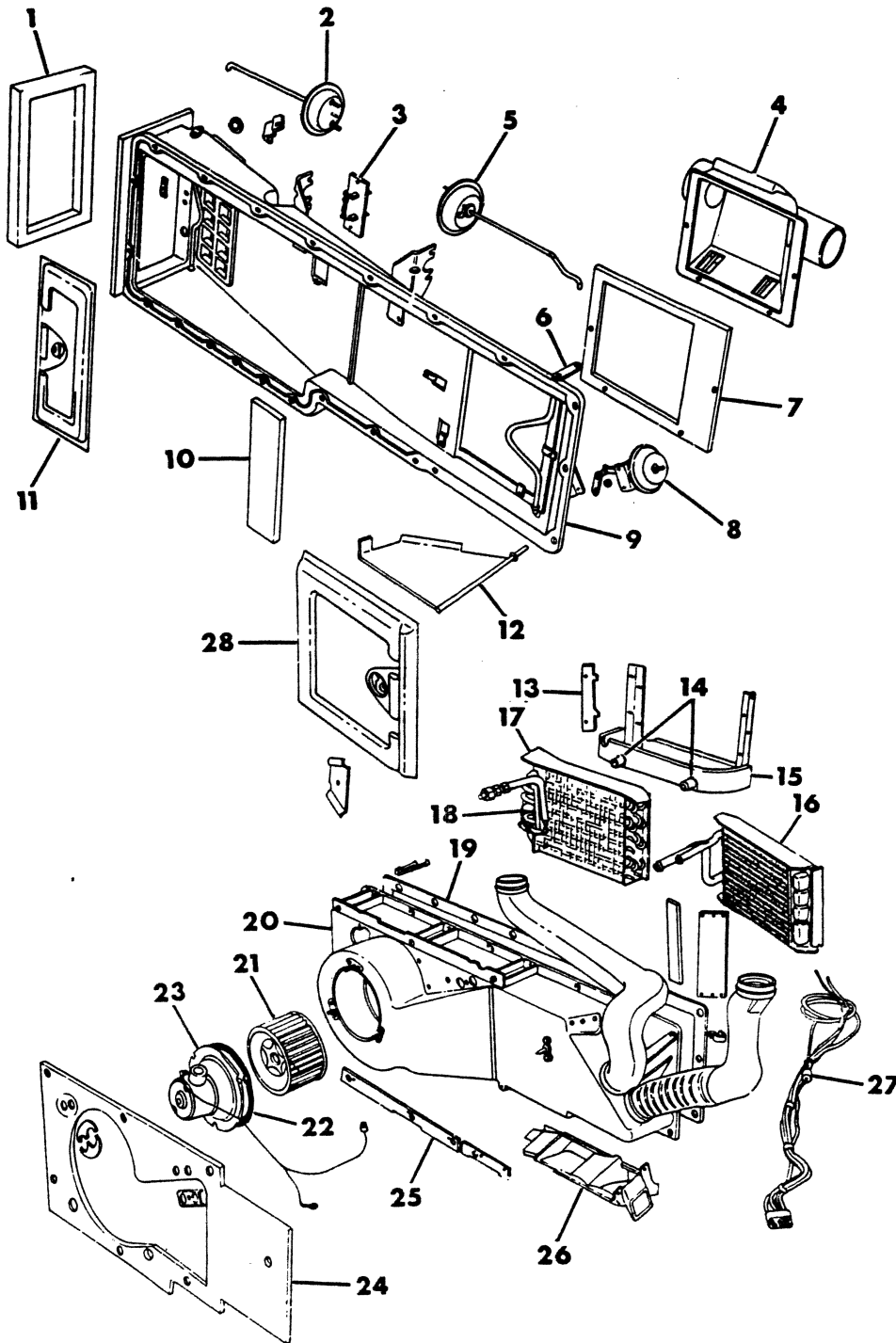
#=New Part Number

Printed in U.S.A.

June, 1982

HEATER AND AIR CONDITIONER
A-D-W-RD 1978-79-80

8324 900B



ITEM	PART NUMBER	QTY	MODEL	DESCRIPTION
	HEATER AND AIR CONDITIONER A-D-W-RD 1978-79-80			
1	3556 671			SEAL, Air Inlet to Side Cowl
2	3556 605			ACTUATOR, Recirculation Vacuum
	6008 145			CLIP, Door Link to Actuator Shaft
3	4085 981			RESISTOR, Blower Mtr.
4	3556 697			HOUSING, Air Distribution
5	3556 604			ACTUATOR, Heat or Cool Vacuum
6				PLATE (Serviced in Assy.)
7				SEAL (Serviced in Assy.)
8	3556 722			ACTUATOR, Heat-Defroster Vacuum
9	3704 579			HOUSING, Rear
10				SEAL (Serviced in Assy.)
11	3556 624			DOOR w/SEAL, Fresh Air
12	3703 660			DOOR w/SEAL, A/C Heat and Defroster
13				SUPPORT (Serviced in Assy.)
14	2936 926			TUBE, Drain
15	3773 054			PAN
16	3556 667			CORE w/SEAL, Heater
17	3556 677			SEAL, Coil Cowl
18	3556 607			COIL, A/C
19	3556 676			SEAL, Frt. Hsg. to Rr. Hsg.
20	3773 426			HOUSING, Front
21	3503 037			WHEEL, Blower Mtr.
22	2911 081			SEAL, Blower Mtr. Mtg.
23	4094 016			MOTOR, A/C and Htr. Blower
	6025 002			NUT, Blower Mtr. Mtg.
24	3556 675			SEAL, to Dash
25				SUPPORT (Serviced in Assy.)
26	3703 658			HOUSING, Heat Distribution
	6028 393			NUT, Htr. Distribution Hsg. Right
27	4034 474			HOSE w/CONNECTOR, Control Vacuum
	3780 794	AR		TUBE, Vacuum 1/8" O.D. (Serv. Roll Stock)
	3489 851			WIRING, A/C and Htr. Inst. Panel (Not Shown)
28				DOOR, Heat and Cool (Serv. in Assy.)

LIGHT	A = All Sport Utility (Ramcharger).	B = All Compact Models.	D = Conventional Cab.
DUTY	AD = 2 Wheel Drive Only (Ramcharger).	CB-MB = Compact Front Section Only.	W = Conventional Cab 4 Wheel Drive.
CODES:	AW = 4 Wheel Drive Only (Ramcharger).	P = Forward Control Chassis.	M = Motor Home.

MEDIUM-HEAVY CODES: XNT = Low Cab Forward. D = Conventional Cab. S = School Bus. W = 4-Wheel Drive.

AR=Use as Required

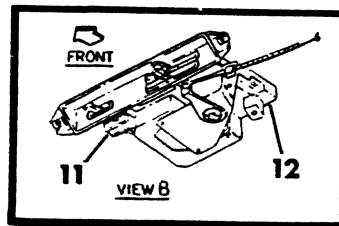
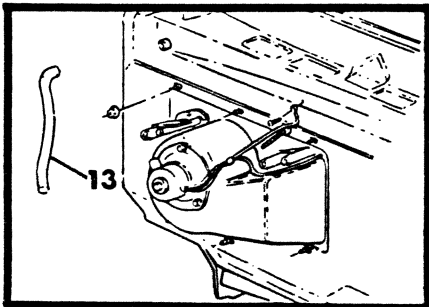
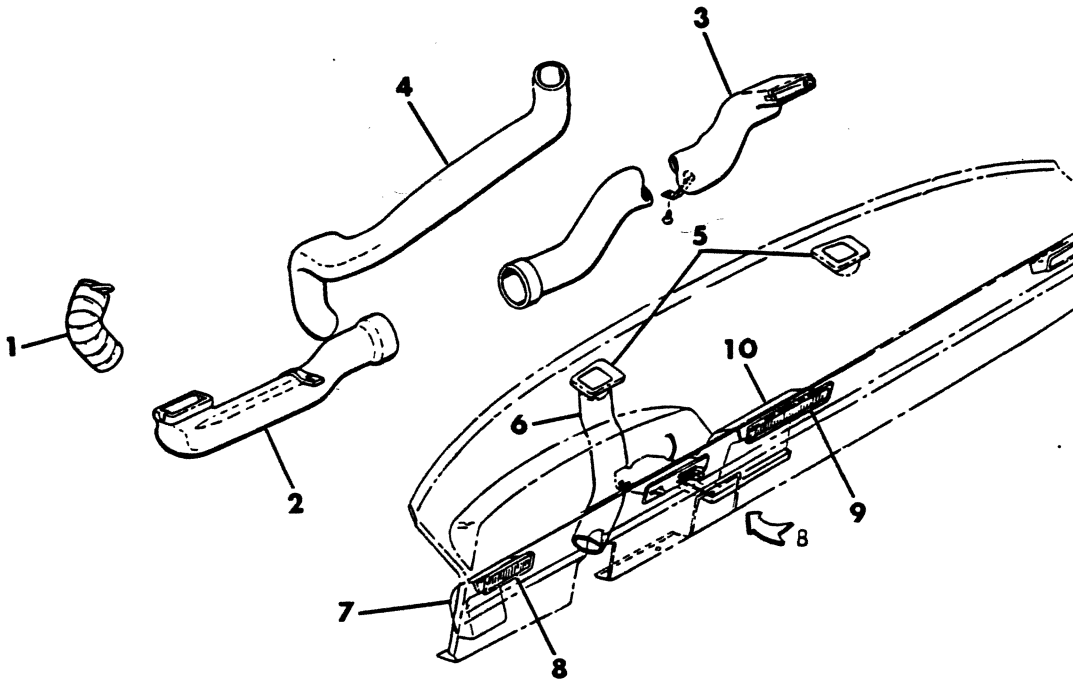
=New Part Number

Printed in U.S.A.

June, 1982

8324 1000

AIR CONDITIONING DISTRIBUTION DUCTS
A-D-W-RD



ITEM	PART NUMBER	QTY	MODEL	DESCRIPTION
AIR CONDITIONING DISTRIBUTION DUCTS A-D-W-RD				
1	3635 051	1		TUBE, Defroster, Left
	3502 677	1		GUIDE, Defroster Tube (Not Shown)
2	3738 255	1		SPOT COOLER, Lower Left Tube, UP TO 5-1-1979
	4114 763	1		AFTER 5-1-1979
3	3489 782	1		DUCT, Right Outlet Housing
4	3489 736	1		DUCT, Defroster Outlet Tube, Right
5				GRILLE, Htr. Defroster Tube
	3730 844	AR		Black
	3730 845	AR		Blue
	3635 287	AR		Tan
	3730 846	AR		Green
	3738 127	AR		Gold
6	3738 540	1		TUBE, Defroster, Left, 1978-79
	4163 939	1		1980
7	3635 079	1		HOUSING, Left Upper Outlet
8	3489 653	1		OUTLET ASSY, Spot Cooler, Right and Left
9	3489 654	1		LOUVER, Center
10	3489 868	1		DUCT, Center Housing
11	3489 677	1		SWITCH, A/C and Htr. Control Blower
12	3635 788	1		CONTROL ASSY., A/C and Htr.
13	3635 582	1		TUBE, Blower Motor Cooling
	870 469	AR		CLIP, Blower Motor Tube Retaining
	2521 729	AR		CLIP, A/C Duct Mtg. (Not Shown)
	9414 764	2		SCREW, A/Cond. And Htr. Control Mtg.
	6013 082	3		NUT, A/Cond. And Htr. Control Mtg.

LIGHT	A = All Sport Utility (Ramcharger).	B = All Compact Models.	D = Conventional Cab.
DUTY	AD = 2 Wheel Drive Only (Ramcharger).	CB-MB = Compact Front Section Only.	W = Conventional Cab 4 Wheel Drive.
CODES:	AW = 4 Wheel Drive Only (Ramcharger).	P = Forward Control Chassis.	M = Motor Home.

MEDIUM-HEAVY CODES: XNT = Low Cab Forward. D = Conventional Cab. S = School Bus. W = 4-Wheel Drive.

AR=Use as Required

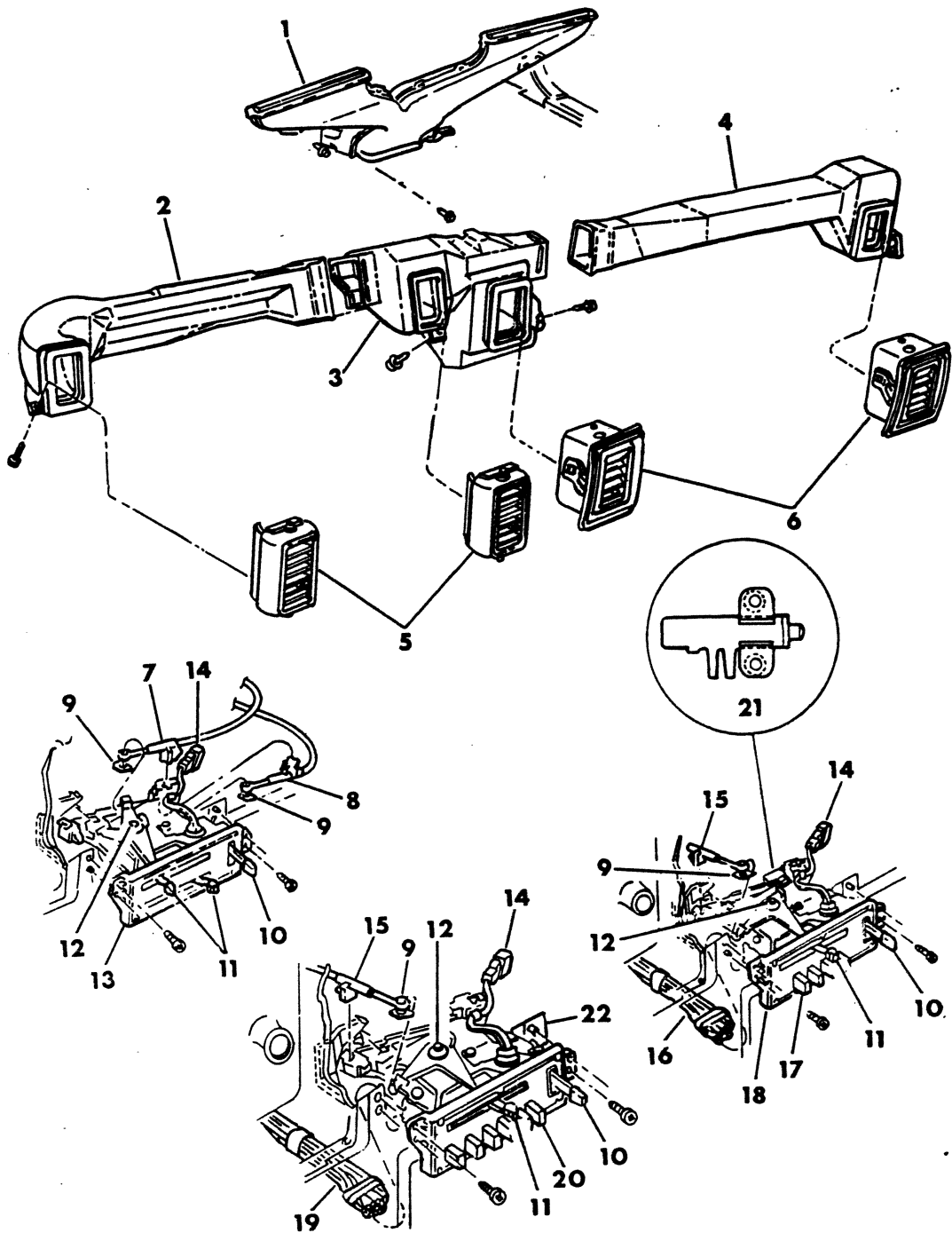
= New Part Number

Printed in U.S.A.

June, 1982

8324 1005

DUCTS AND CONTROLS A-D-W-RD 1981



ITEM	PART NUMBER	QTY	MODEL	DESCRIPTION
DUCTS AND CONTROLS				
A-D-W-RD 1981				
1	4162 148	1		DUCT, DEFROSTER
2	4163 927	1		DUCT, OUTLET LT.
3	4163 928	1		DUCT, Outlet Center
4	4163 926	1		DUCT, Outlet Rt.
5	3846 592	2		LOUVERS, Left
6	4162 095	2		LOUVERS, Right
7	4163 953	1		CABLE, Temp
8	4163 954	1		CABLE, Mode
9	6029 889	AR		CLIP
10	4176 100	1		SWITCH
11	3847 447	1		LEVER
12	3503 317	1		PIN
	2820 453	AR		Clip
13	5210 413	1		BASE
14	4131 388	1		SOCKET ASSY.
	9415 969	1		Bulb
15	4163 955	1		CABLE
16	4261 301	1		VACUUM EXTENSION
17	3847 510	1		SWITCH, 4 Button
18	3847 667	1		BASE
19	3847 522	1		VACUUM EXTENSION
20	3846 825	1		SWITCH, 6 Button
21	3846 895	1		SWITCH, By-Level
22	3847 669	1		BASE

LIGHT	A = All Sport Utility (Ramcharger).	B = All Compact Models.	D = Conventional Cab.
DUTY	AD = 2 Wheel Drive Only (Ramcharger).	CB-MB = Compact Front Section Only.	W = Conventional Cab 4 Wheel Drive.
CODES:	AW = 4 Wheel Drive Only (Ramcharger).	P = Forward Control Chassis.	M = Motor Home.

MEDIUM-HEAVY CODES: XNT = Low Cab Forward. D = Conventional Cab. S = School Bus. W = 4-Wheel Drive.

AR=Use as Required

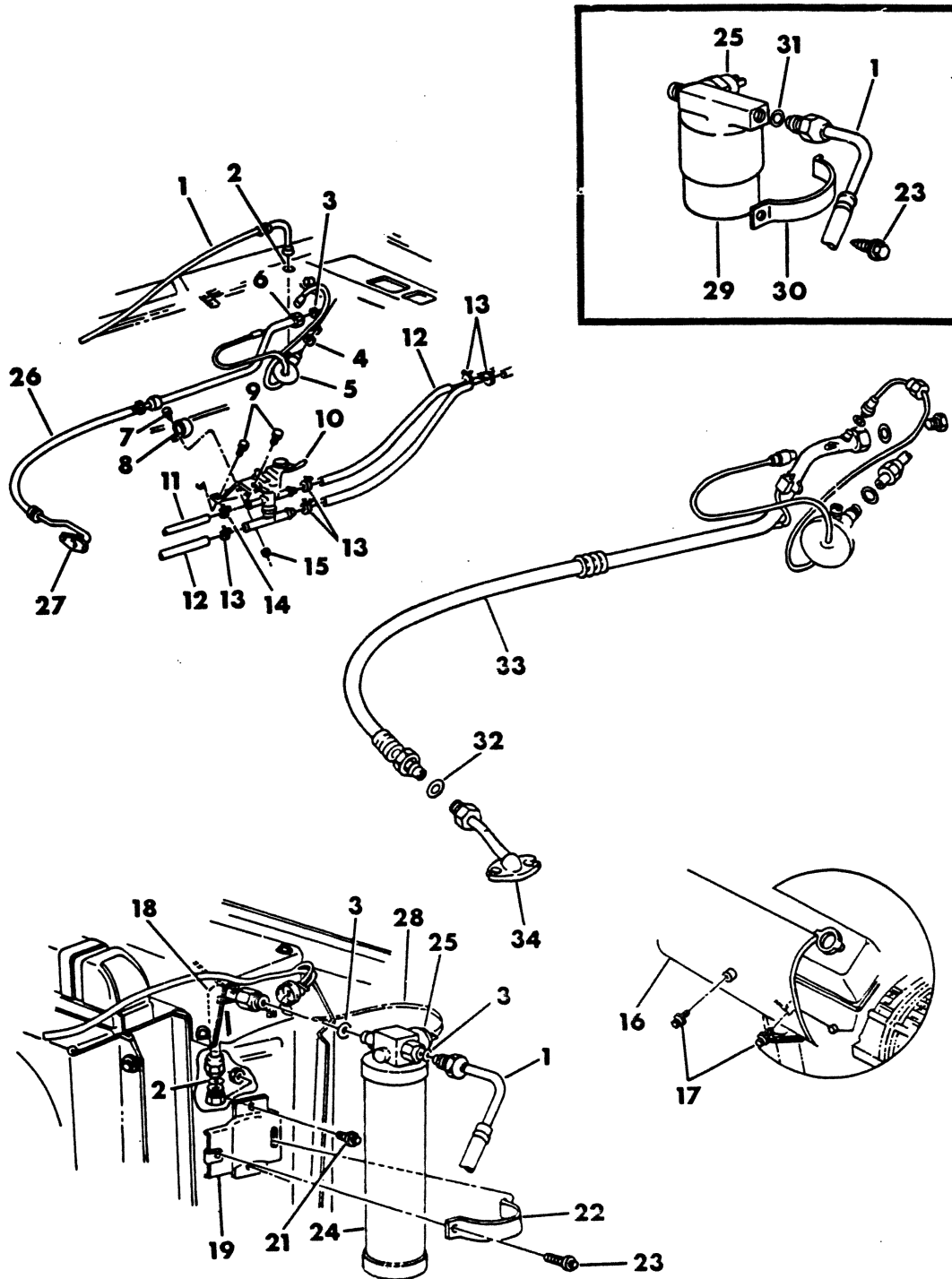
=New Part Number

Printed in U.S.A.

June, 1982

8324 1100D

AIR CONDITIONING AND HEATER PLUMBING A-D-W-RD



ITEM	PART NUMBER	QTY	MODEL	DESCRIPTION
AIR CONDITIONING AND HEATER PLUMBING A-D-W-RD				
1	3635 119	1		HOSE, A/C Reciever Drier to Exp. Valve
2	5210 380	1		"O" RING, Reciever Drier
3	2521 172	1		"O" RING, Suction Hose
4	2219 384	1		"O" RING, Discharge Hose
5	3703 651	1		VALVE, Expansion
6	2277 190	1		"O" RING, Exp. Valve Capillary Tube
7	152 792	1		SCREW
8	9413 545	1		CLIP, Suction Hose
9		1		SCREW (1/4-14 x 1/2)
10	3502 714	1		VALVE, Water
	4240 422	1		1981
11	2936 388	AR		HOSE, 1/2" (Serv. Roll Stock)
12	1315 466	AR		HOSE, 5/8" (Serv. Roll Stock)
13	870 469	6		CLAMP, 5/8" Hose
14	272 848	2		CLAMP, 1/2" Hose
15	6030 820	2		NUT w/Wa.
16	3730 590	1		SHIELD, Heat w/400-440 Eng.
17	180 018	2		SCREW (1/4-20 x 5/8)
18	4039 596	1		Hose, Extension, A/C Condenser to Filter Drier
19	4034 439	1		BRACKET, Drier Mtg., Up to 4-1-1978
	4114 133	1		After 4-1-1978
20	118 613	2		NUT (1/4 x 20)
21	180 018	2		BOLT (1/4-20 x 5/8)
22		1		STRAP, Reciever Drier Mtg. 1978
23	180 024	1		SCREW (1/4-20 x 1-1/4)
24	3502 015	1		RECIEVER DRIER, 1978
25	3879 432	1		SWITCH, Low Pressure Cut-Off
	3441 105	1		SEAL, Low Pressure Switch
26	4085 175	1		HOSE, Suction, All Eng., UP TO 4-2-1979
	4114 769	1		w/318-360 Eng., AFTER 4-2-1979
	4162 409	1		w/318-360 Eng. 1980
	4085 175	1		w/225 and DIESEL Eng., UP TO 4-2-1979
	4114 770	1		AFTER 4-2-1979
27	3846 567	1		GASKET, Suction Hose Flange
28	3843 398	1		WIRING, Low Pressure Cut-Off Switch
29	3879 547	1		FILTER, Drier 1979-80
30	3846 134	1		STRAP, Filter Drier Mtg. 1979-80
31	5210 380	1		"O" RING, Hose Drier End
32	2219 385	1		"O" RING, Suction Hose to Suction Tube
33	4114 615	1		HOSE, Suction Evaporator End w/225 and DIESEL Eng.

FOLLOWING ITEMS NOT SHOWN

	4114 448	1	ADAPTER, A/C Filter Drier Mtg. Brkt. w/DIESEL Eng.
34	4085 812	1	TUBE w/FLANGE, Suction. Compr. End w/225 Eng.
	3502 123	1	NIPPLE, Screened, Htr. Hose to Eng.

LIGHT	A = All Sport Utility (Ramcharger).	B = All Compact Models.	D = Conventional Cab.
DUTY	AD = 2 Wheel Drive Only (Ramcharger).	CB-MB = Compact Front Section Only.	W = Conventional Cab 4 Wheel Drive.
CODES:	AW = 4 Wheel Drive Only (Ramcharger).	P = Forward Control Chassis.	M = Motor Home.
MEDIUM-HEAVY CODES:	XNT = Low Cab Forward.	D = Conventional Cab.	S = School Bus. W = 4-Wheel Drive.

AR=Use as Required

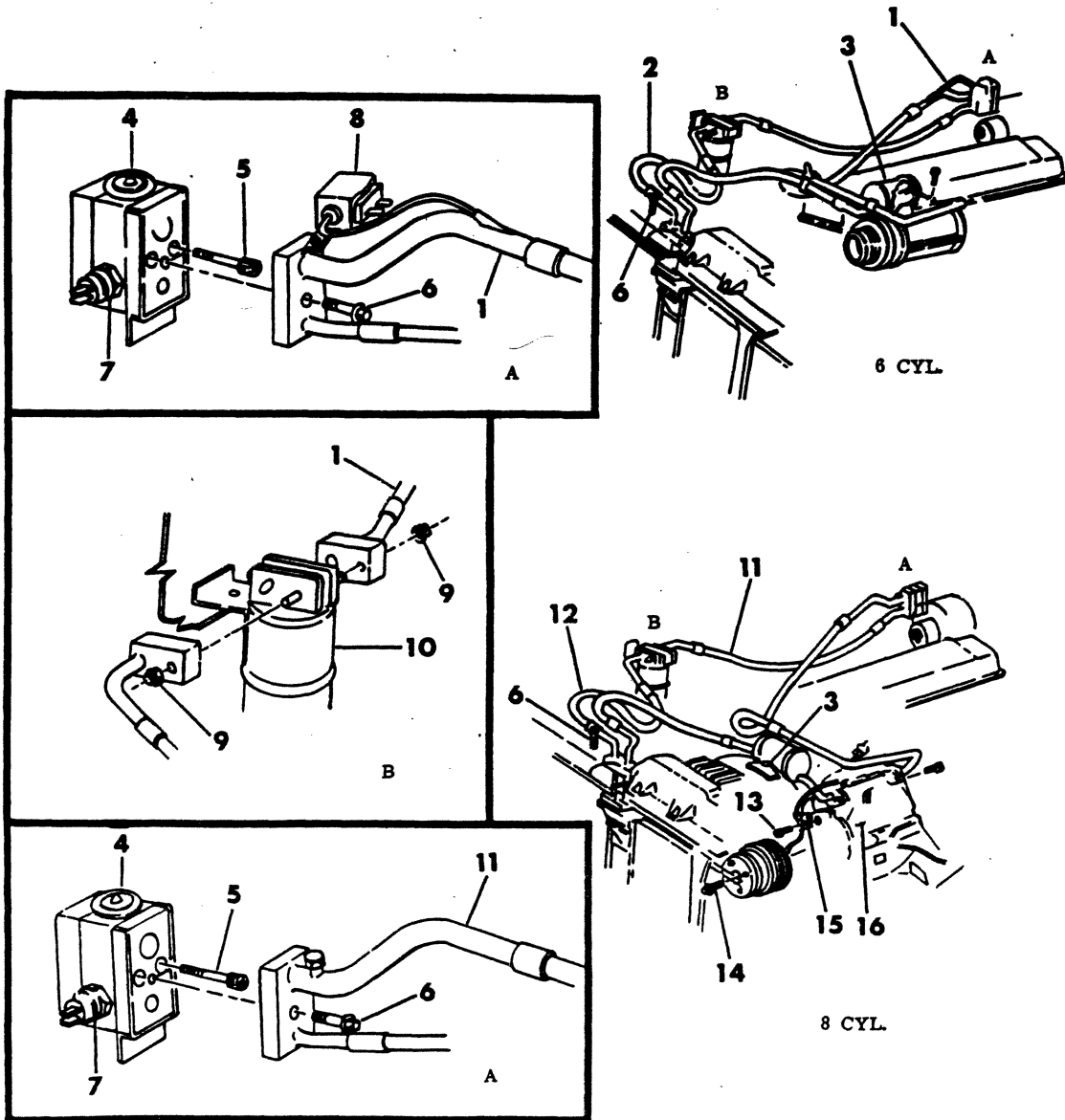
= New Part Number

Printed in U.S.A.

June, 1982

AIR CONDITIONING AND PLUMBING
A-B-D-W-RD, 1981

8324 1105

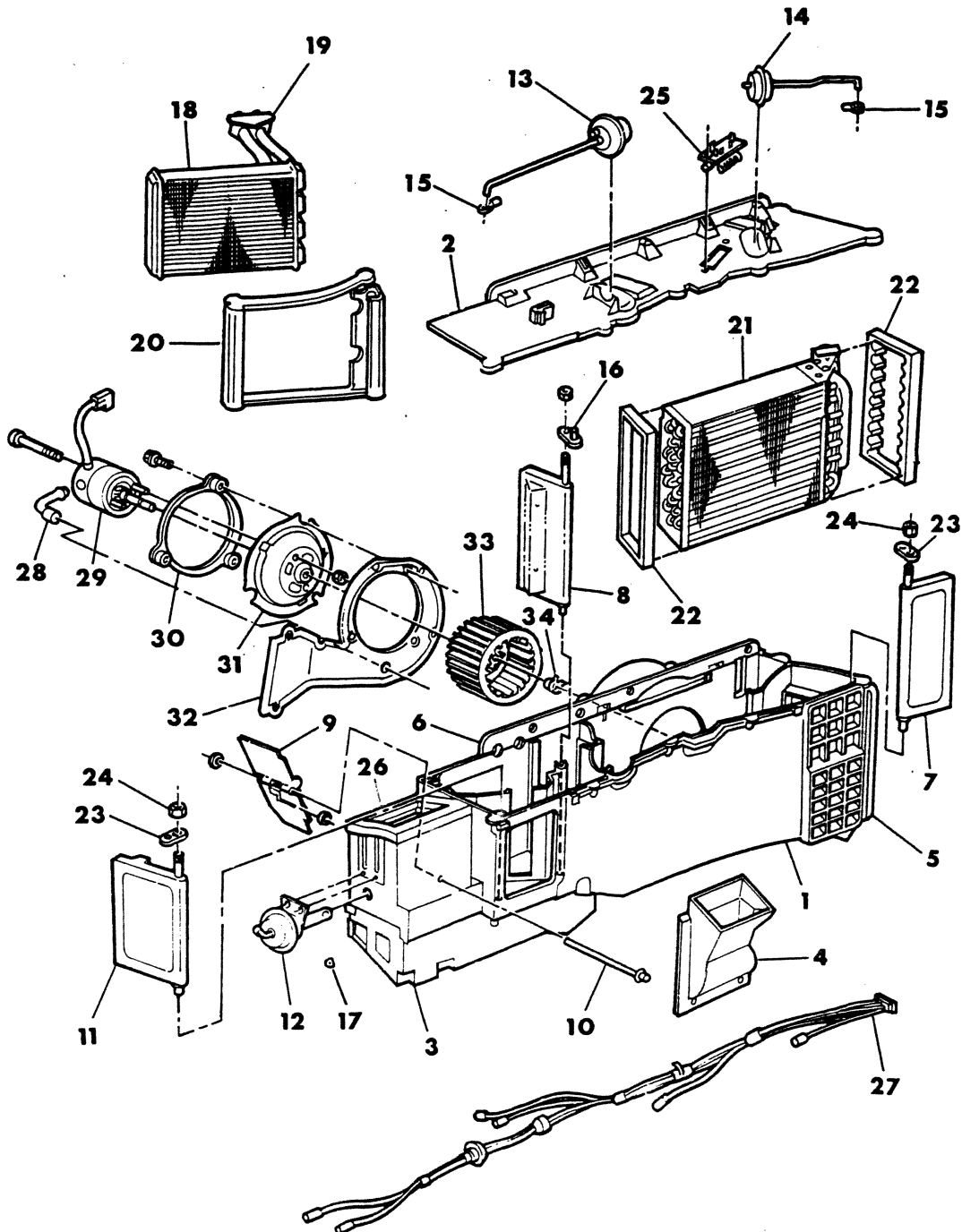


ITEM	PART NUMBER	QTY	MODEL	DESCRIPTION
AIR CONDITIONING AND PLUMING				
A-B-D-W-RD, 1981				
1	4163 999	1		HOSE, Suction and Liquid w/225 Eng. w/o switch
	3847 083	1		GSKT. Suction line mtg. to drier
	3847 083	1		GSKT. Suction line plate to expansion valve.
2	4163 919	1		HOSE, Discharge and liquid w/225 End.
	3847 083	1		GSKT. Discharge line
3	3704 531	1		CAP, Muffler
4	4162 499	1		VALVE, Expansion
5	6030 267	2		SCREW, (1/4-20x2)
6	6100 314	2		SCREW and Washer
7	5210 377	1		SWITCH, Low pressure cutoff
	3441 105	1		SEAL, Switch
8	4106 143	1		SWITCH, Suction line temp.
9	118 614	2		NUT and Washer
10	4163 951	1		FILTER DRIER and brkt.
11	4163 916	1		HOSE, Suction w/318,360 end.
	3847 083	1		GSKT. Suction line to mtg. drier
12	4163 918	1		HOSE, Discharge line w/318,360
	3847 083	1		GSKT. Discharge line to mtg to drier
	3847 083	1		GSKT. Discharge line to mtg to condenser
13	9414 023	1		SCERW,(10-24x1/4)
14	6031 092	1		SCERW,(5/16-24)
15	6015 795	1		CLIP
16	3846 631	1		COMPRESSOR

LIGHT	A = All Sport Utility (Ramcharger).	B = All Compact Models.	D = Conventional Cab.
DUTY	AD = 2 Wheel Drive Only (Ramcharger).	CB-MB = Compact Front Section Only.	W = Conventional Cab 4 Wheel Drive.
CODES:	AW = 4 Wheel Drive Only (Ramcharger).	P = Forward Control Chassis.	M = Motor Home.
MEDIUM-HEAVY CODES:	XNT = Low Cab Forward.	D = Conventional Cab.	S = School Bus. W = 4-Wheel Drive.
AR=Use as Required	# =New Part Number	Printed in U.S.A.	June, 1982

AIR CONDITIONING
A-D-W-RD, 1981

8324 1110



ITEM	PART NUMBER	QTY	MODEL	DESCRIPTION
AIR CONDITIONING				
A-D-W-RD, 1981				
1	4163 707	1		HOUSING w/stud
2	4163 709	1		COVER w/seal
3	4163 752	1		DEVERTER w/stud
4	4163 753	1		HOUSING w/seal
5	4163 653	1		SEAL, Unit to side cowl
6	4163 703	1		SEAL, Unit to dash
7	4163 715	1		DOOR w/seal, side cowl
8	4163 727	1		DOOR w/seal, air blend
9	4163 733	1		DOOR, Defroster
10	4163 735	1		SHAFT, Defroster door
11	4163 721	1		DOOR w/seal, mode door
12	4163 731	1		ACTUATOR, Defroster door
13	4163 719	1		ACTUATOR, Air blend door
14	4163 713	1		ACTUATOR, Side cowl door
15	6008 144	2		CLIP, Actuators
16	4163 725	1		LEVER w/pin
17	2197 678	1		CLIP, Actuator
18	4205 834	1		CORE, Heater
19	4163 736	1		SEAL, Unit to dash
20	4163 672	1		SEAL, Heater core
21	4163 738	1		COIL, Evap.
22		2		SEAL, Coil sides
23	4163 714	2		LEVER
24	120 375	2		NUT
25	4163 761	1		RESISTOR, Heater
26	4163 657	1		SEAL, Unit to dash
27	4163 702	1		HOSE
28	3503 040	1		TUBE
29	4186 986	1		MOTOR
30		1		RING, Mounting
31		1		PLATE, Mounting
32	4163 704	1		PLATE, Back Housing Mounting
33	3503 037	1		WHEEL, Blower
34	2837 680	1		CLAMP, Motor Shaft

LIGHT	A = All Sport Utility (Ramcharger).	B = All Compact Models.	D = Conventional Cab.
DUTY	AD = 2 Wheel Drive Only (Ramcharger).	CB-MB = Compact Front Section Only.	W = Conventional Cab 4 Wheel Drive.
CODES:	AW = 4 Wheel Drive Only (Ramcharger).	P = Forward Control Chassis.	M = Motor Home.

MEDIUM-HEAVY CODES: XNT = Low Cab Forward. D = Conventional Cab. S = School Bus. W = 4-Wheel Drive.

AR=Use as Required

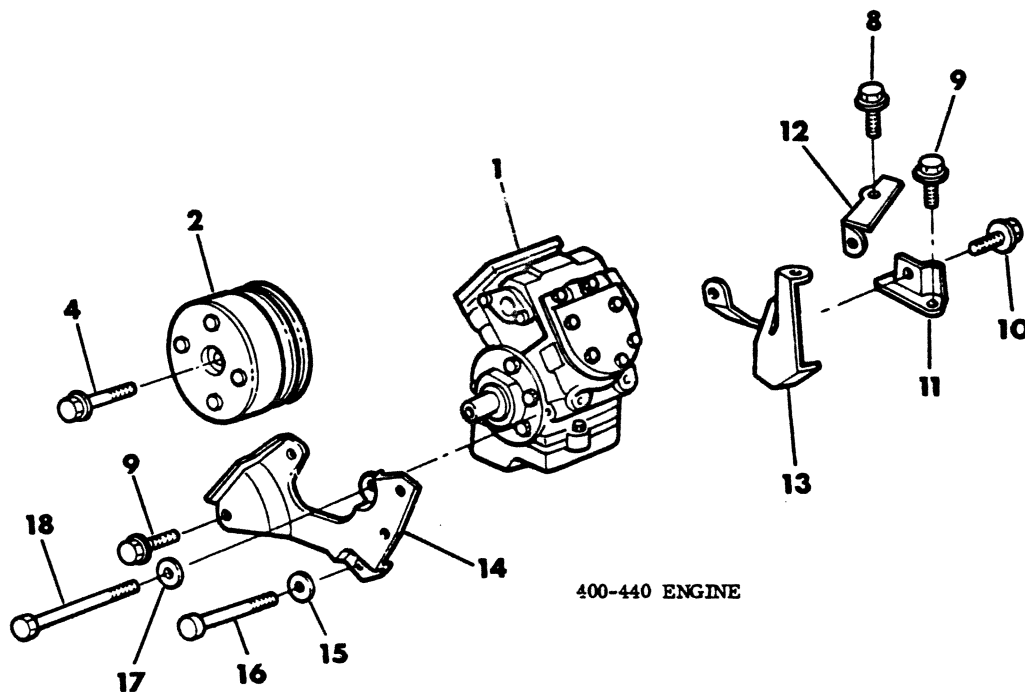
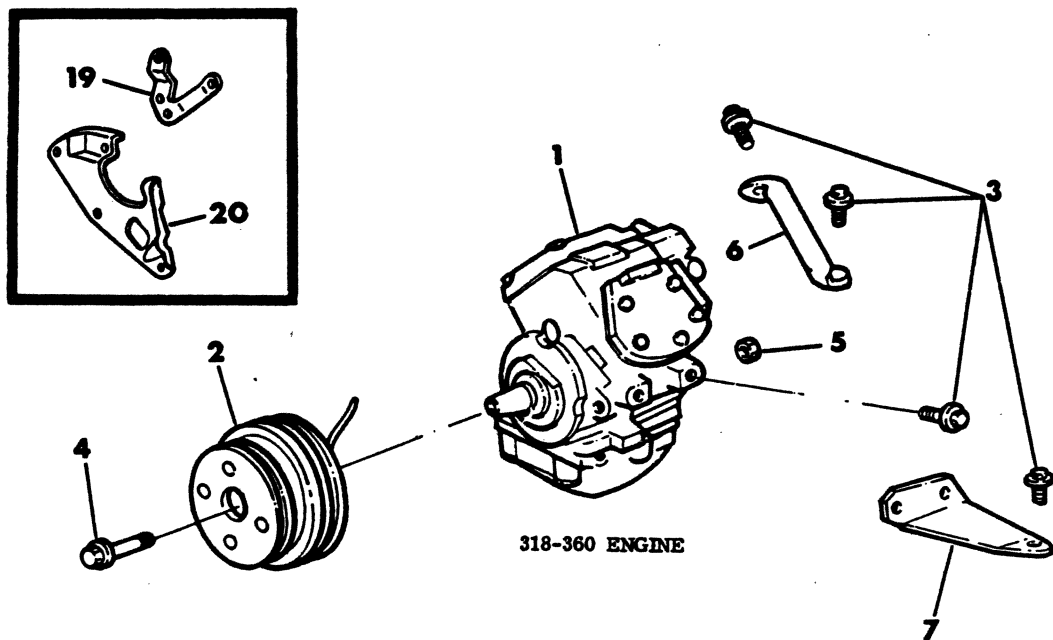
= New Part Number

Printed in U.S.A.

June, 1982

8324 1200B

COMPRESSOR MOUNTING
A-B-D-W-RD, 1978-79-80



ITEM	PART NUMBER	QTY	MODEL	DESCRIPTION
COMPRESSOR MOUNTING				
A-B-D-W-RD, 1978-79-80				
1	3846 631	1	A-B-D-W-RD	COMPRESSOR ASSY.
2		1	A-B-D-W-RD	CLUTCH AND HUB (Serv. Component Parts)
3	180 121	1	A-B-D-W-RD	SCREW (3/8-16 x .88)
4	6031 092	1	A-B-D-W-RD	SCREW (5/16-24)
5	271 502	1	A-B-D-W-RD	NUT (7/16-14)
6	3751 243	1	A-B-D-W-RD	SUPPORT, Right Rear
7	3418 261	1	A-B-D-W-RD	BRACKET, Comp. Supt. Lt. 1978
	4100 499	1	A-B-D-W-RD	1979-80
8	181 086	1	A-B-D-W-RD	SCREW, (5/16-18 x .75)
9	181 085	1	A-B-D-W-RD	SCREW, (1/4-20 x 1)
10	6022 250	1	A-B-D-W-RD	SCREW, (3/8-16 x .75)
11	3698 993	1	A-B-D-W-RD	BRACKET, Rear Center
12	3698 954	1	A-B-D-W-RD	SUPPORT, Rear Right, w/400 Eng.
	3698 956	1	A-B-D-W-RD	440 Eng.
13	3698 948	1	A-B-D-W-RD	BRACKET, Rear Center, w/400 Eng.
	3698 950	1	A-B-D-W-RD	440 Eng.
	3769 370	1	A-D-W-RD	BRACKET, Compr. to Water Pump Hsg., Left
14	3698 664	1	A-B-D-W-RD	BRACKET, Front
15	181 112	1	A-B-D-W-RD	WASHER, Coned
16	433 105	1	A-B-D-W-RD	SCREW, (3/8-16 x 3-1/2)
17	6025 705	1	A-B-D-W-RD	WASHER, Coned
18	9419 197	1	A-B-D-W-RD	SCREW, (7/16-14 x 5-1/4)
19	4071 733	1	A-B-D-W-RD	BRACKET, Compr. and Alternator Mtg., Rear
20	3830 155	1	A-B-D-W-RD	BRACKET, Compr. and Alternator Mtg., Front 1978
	4037 613	1	A-B-D-W-RD	1979-80
	4116 856	1	A-B-D-W-RD	SUPPORT, Compr. to Altr. Mtg. Brkt., Frt. w/100 Amp. Altr. (Not Shown)

LIGHT	A = All Sport Utility (Ramcharger).	B = All Compact Models.	D = Conventional Cab.
DUTY	AD = 2 Wheel Drive Only (Ramcharger).	CB-MB = Compact Front Section Only.	W = Conventional Cab 4 Wheel Drive.
CODES:	AW = 4 Wheel Drive Only (Ramcharger).	P = Forward Control Chassis.	M = Motor Home.
MEDIUM-HEAVY CODES:	XNT = Low Cab Forward.	D = Conventional Cab.	S = School Bus. W = 4-Wheel Drive.

AR=Use as Required

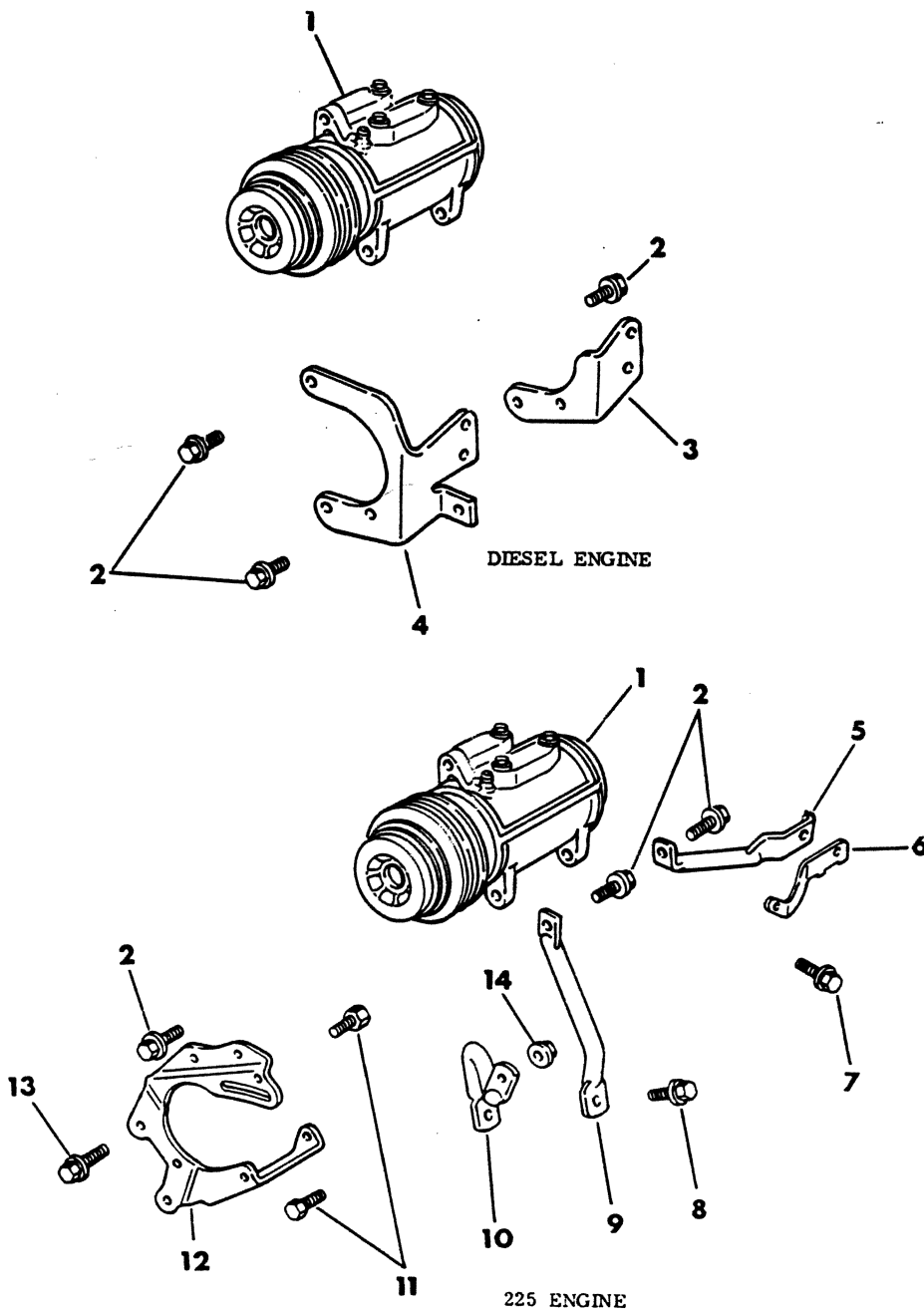
#=New Part Number

Printed in U.S.A.

June, 1982

8324 1250

COMPRESSOR MOUNTING WITH 225 AND MMC DIESEL ENG.
B-D-W, 1978-79-80



ITEM	PART NUMBER	QTY	MODEL	DESCRIPTION
COMPRESSOR MOUNTING WITH 225 AND MMC DIESEL ENG. B-D-W, 1978-79-80				
1	4176 028	1		COMPRESSOR ASSY.
2	6100 231	AR		SCREW, Compr. Mtg. (M10-1.50 x 35)
3	4115 838	1		BRACKET, Compr. Mtg., Rear
4	4115 837	1		BRACKET, Compr. Mtg., Front
	6100 320	1		SCREW, Compr. Mtg. (M10-1.50 x 20) DIESEL Eng. (Not Shown)
	6100 321	4		SCREW, Compr. Mtg. (M10-1.50 x 25) DIESEL Eng. (Not Shown)
5	4089 596	1		SUPPORT, Compr. Rear to Eng. Manifold
6				BRACKET, (Refer to Group 14)
7	6022 258	1		SCREW, Supt. Mtg. (3/8-16 x 1.50)
8	6024 031	1		SCREW, Supt. Rear to Eng. Mtg.
9	4089 598	1		SUPPORT, Compr. to Eng. Mtg.
10	4088 509	1		SUPPORT, Compr. to Eng. Mtg. Lower
11	181 112	3		BOLT, (3/8-16 x 1.00)
12	4089 595	1		BRACKET, Compr. and Air Pump Mtg.
13	6022 266	3		SCREW, (3/8-16 x 1.50)
14	6025 020	3		NUT, (3/8-16)

LIGHT	A = All Sport Utility (Ramcharger).	B = All Compact Models.	D = Conventional Cab.
DUTY	AD = 2 Wheel Drive Only (Ramcharger).	CB-MB = Compact Front Section Only.	W = Conventional Cab 4 Wheel Drive.
CODES:	AW = 4 Wheel Drive Only (Ramcharger).	P = Forward Control Chassis.	M = Motor Home.
MEDIUM-HEAVY CODES:	XNT = Low Cab Forward.	D = Conventional Cab.	S = School Bus. W = 4-Wheel Drive.

AR=Use as Required

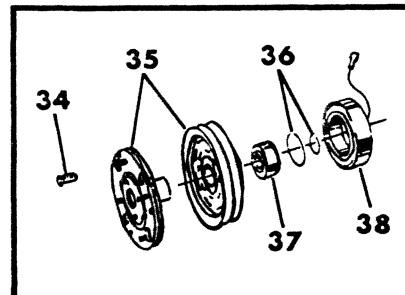
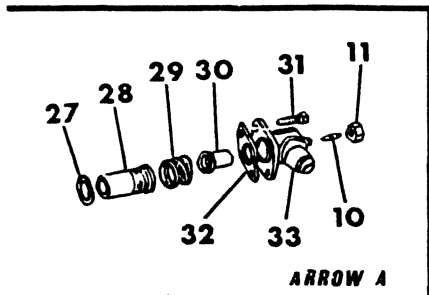
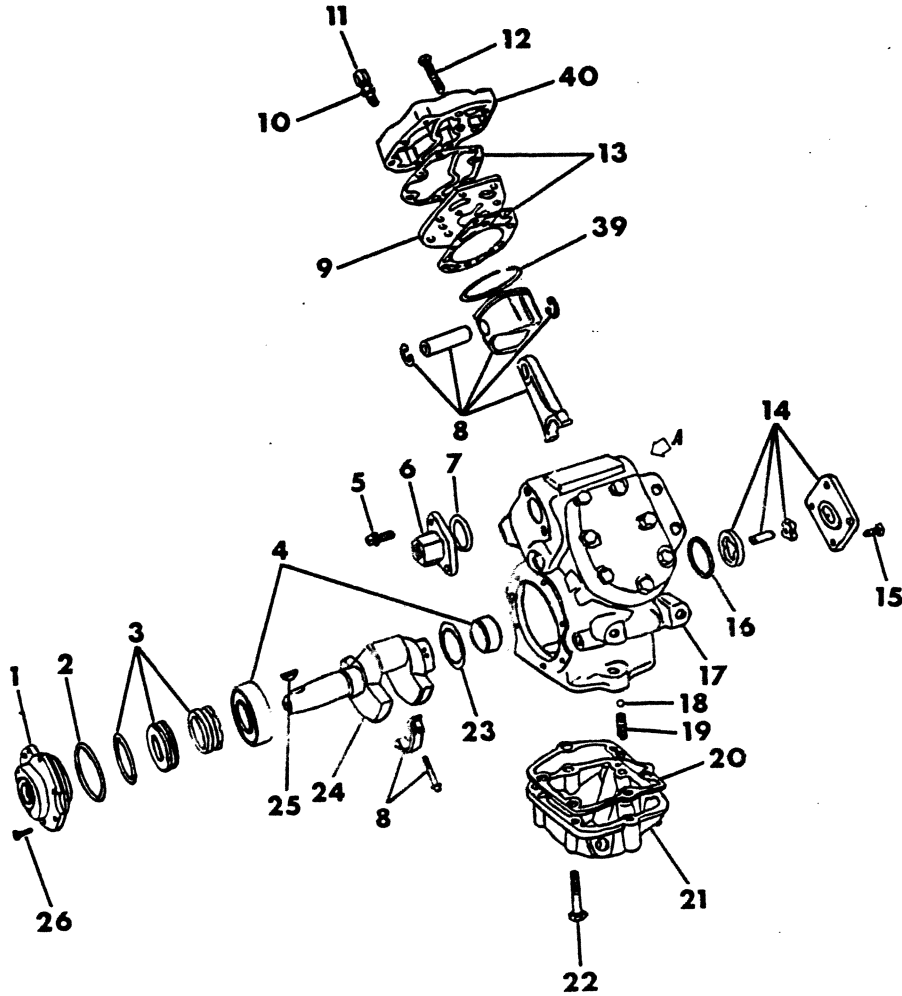
=New Part Number

Printed in U.S.A.

June, 1982

COMPRESSOR AND CLUTCH - A/C 8 CYL A-B-D-W-RD 1978-79-80

8324 1300A



ITEM	PART NUMBER	QTY	MODEL	DESCRIPTION
COMPRESSOR AND CLUTCH - A/C 8 CYL A-B-D-W-RD 1978-79-80				
	3846 631	1		COMPRESSOR, A/C
1	3420 916	1		HOUSING PKG., C/Shaft Brg.
2	1982 542	1		SEAL, Brg. Housing (Square)
	3704 597	1		FLAT
3	1426 501	1		SEAL PKG., Crankshaft Gas
4	3704 448	1		BEARING, Crankshaft Ball
		1		Rear Main (3704479 Serv. Vendor)
5		1		BOLT
6	3492 435	1		FITTING, Muffler and Discharge
	2537 992	1		SLEEVE, Discharge Hose, w/Pwr. Strg.
	3846 272	1		GASKET, Fitting Flange
7	3441 513	1		SEAL, Compr. Discharge Fitting
8	4049 751	1		PISTON and CONNECTION ROD PKG.
9	2275 204-5	1		PLATE PKG., Valve
10	1992 947	1		VALVE, Compr. Suction Fitting
	3847 576	1		VALVE, A/C Discharge Line Check 1980 (Not Shown)
11	3704 531	1		CAP, Suction Fitting
12		1		BOLT
13	3664 519	1		GASKET, Cylinder Head
14	2021 191	1		PUMP PKG., Oil
15		1		BOLT
16	1747 988	1		SEAL, Crankshaft Oil Pump Cover
17		1		HOUSING (Serv. in Assy)
18		1		BALL
19		1		SPRING
20	3703 672	1		GASKET
21	4049 780	1		SUMP AND GSKT. PKG., Oil
22		1		BOLT
23	1747 982	1		WASHER, Crankshaft Thrust
24	4094 014	1		CRANKSHAFT PKG., Compressor
25		1		KEY
26		1		BOLT
27	1994 410	1		SEAL, Suction
28	3879 347	1		VALVE
29	1994 408	1		SPRING, Pressure Reg. Valve Spacer
30	3484 412	1		SCREEN, Suction
31		1		BOLT
32	3773 546	1		GASKET, Suction Fitting 1978
	3846 567	1		1979-80
33	3484 440	1		FITTING, Suction Muffler w/Compr. 3492202-1, 3512711, 3502611, 3502612
	3484 438	1		w/Compr. 3462351-2, 3512710, 3502609,
	3408 425	1		w/Compr. 3497382, 3641238,
	3664 478	1		w/Compr. 3846630 3773416, 3773417
34	1819 843			SCREW, A/C Compr. Clutch
	2097 102			WASHER
	6031 092			SCREW w/WA
35	3846 523	1		PULLEY AND HUB, A/C Compr. Clutch
36	2097 101	1		RING, Inner

LIGHT A = All Sport Utility (Ramcharger).

B = All Compact Models.

D = Conventional Cab.

DUTY AD = 2 Wheel Drive Only (Ramcharger).

CB-MB = Compact Front Section Only.

W = Conventional Cab 4 Wheel Drive.

CODES: AW = 4 Wheel Drive Only (Ramcharger).

P = Forward Control Chassis.

M = Motor Home.

MEDIUM-HEAVY CODES: XNT = Low Cab Forward. D = Conventional Cab. S = School Bus. W = 4-Wheel Drive.

AR=Use as Required

= New Part Number

Printed in U.S.A.

June, 1982

1978-81 LIGHT DUTY TRUCK PARTS CATALOG

HEATER AND AIR

ITEM	PART NUMBER	QTY	MODEL	DESCRIPTION
COMPRESSOR AND CLUTCH - A/C 8 CYL A-B-D-W-RD 1978-79-80				
	2097 103	1		RING, Outer
37	1769 318	1		BEARING, A/C Compr. Pulley Hub
38	3846 638	1		COIL, A/C Compr. Clutch Field 1978
	3846 977	1		1979-80
	6015 795	1		CLIP, Clutch Field Coil Wire Mtg.
	3764 856	1		INSULATOR, Clutch Field Coil
	3513 692	1		TERMINAL, Clutch Field Coil
39	4049 752	1		RING PKG., Piston
40	3773 104	1		HEAD, Right
	3604 299	1		Left

LIGHT	A = All Sport Utility (Ramcharger).	B = All Compact Models.	D = Conventional Cab.
DUTY	AD = 2 Wheel Drive Only (Ramcharger).	CB-MB = Compact Front Section Only.	W = Conventional Cab 4 Wheel Drive.
CODES:	AW = 4 Wheel Drive Only (Ramcharger).	P = Forward Control Chassis.	M = Motor Home.

MEDIUM-HEAVY CODES: XNT = Low Cab Forward. D = Conventional Cab. S = School Bus. W = 4-Wheel Drive.

AR=Use as Required

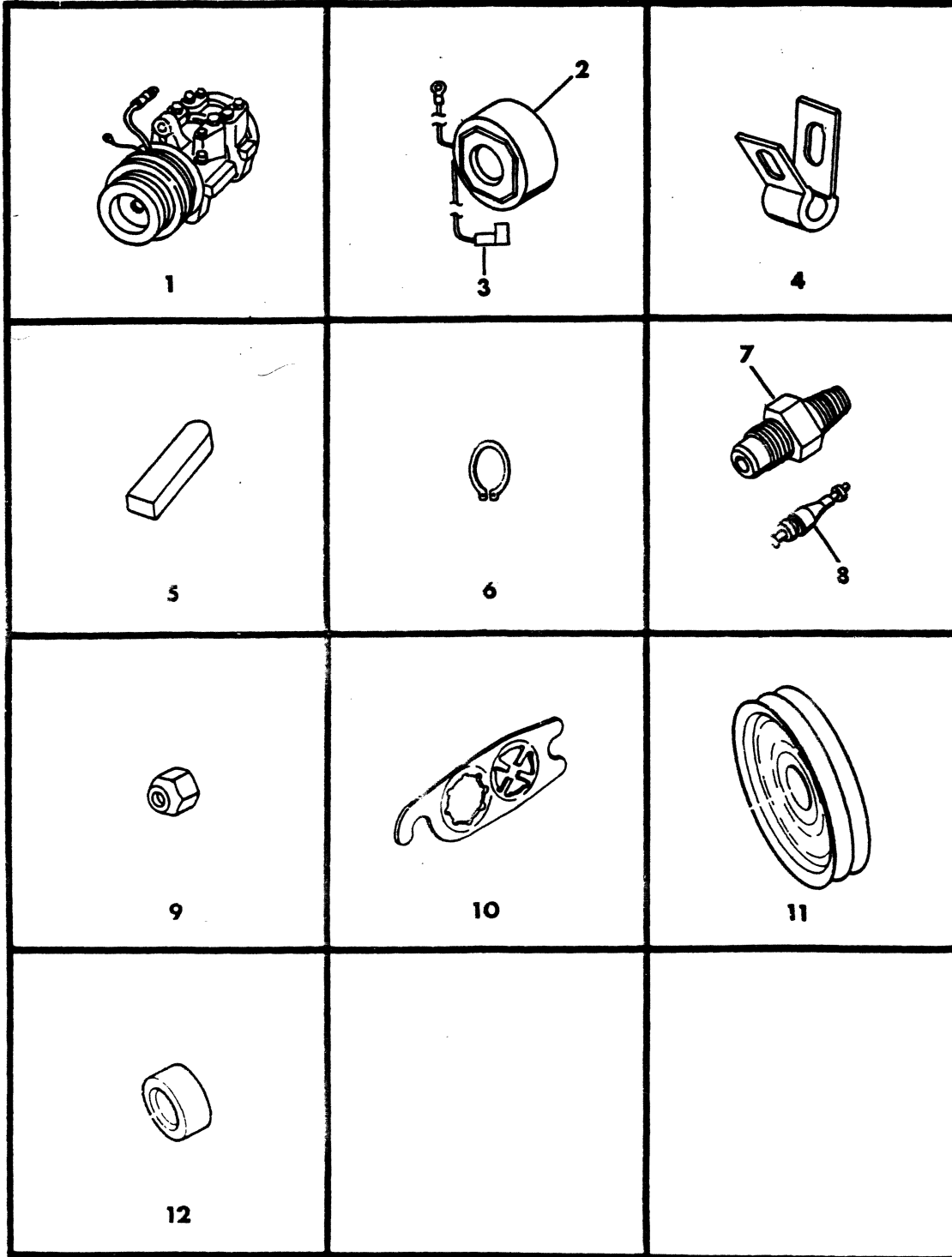
= New Part Number

Printed in U.S.A.

June, 1982

COMPRESSOR AND PARTS - AIR CONDITIONING 225 AND MMC DIESEL ENGINE

8324 1400



ITEM	PART NUMBER	QTY	MODEL	DESCRIPTION
COMPRESSOR AND PARTS - AIR CONDITIONING 225 AND MMC DIESEL ENGINE				
	3847 180	1	All	SHIM PKG. A/C Compr. Drive Clutch Consists Of: 5—Shims
	3847 178	1	all	PACKAGE, Pulley Bearing And Armature A/C Comp. Clutch Drive 225 Eng. Single Groove
	3847 179	1	all	225 Eng. Double Groove Consists Of: 1—Pulley and Bearing 1—Armature
1	4176 028	1	All	COMPRESSOR, A/C Less Clutch 1981
2	3846 845	1	All	COIL A/C Compr(Drive Clutch Field)
3	3843 386	1	All	TERMINAL, A/C Field Coil Lead
	3843 753	1	All	INSULATOR, A/C Field Coil Lead Term.
4	6015 968	1	All	CLIP, A/C Compr (Clutch Field Coil Mtg)
5	3846 680	1	All	KEY, A/C Compr (Shaft Drive)
6	6031 415	1	All	RING, A/C Compr. (Drive Cl. Coil Ext.) 1.832 I.D. 1078-79
	6500 411	1	All	(.078") 1980
	6031 416	1	All	A/C Compr.(Drive Clutch Pulley Ext.) 1.456 I.D.
7	3846 722	1	All	FITTING, A/C Compr. Check Valve
8	1992 947	1	All	CORE, A/C Compr. Check Valve
9	3704 531	1	All	CAP, A/C Compr. Check Valve
	9425 178	1	All	SCREW, A/C Compr.(Clutch Field Coil Ground)
	6100 218	1	All	NUT, A/C Compr. (Drive Clutch Mtg.)
	6100 141	1	All	WASHER, A/C Compr.(Drive Clutch Mtg. Lock)
10	3847 081	1	All	GASKET, A/C Suction Flange To Compr. (Rubber Coated)
	3847 081	1	All	GASKET, A/C Discharge Line Flange to Compr. (Rubber Coat.d)
12	1769 318	1	All	BEARING, A/C Compr. Clutch

LIGHT	A = All Sport Utility (Ramcharger).	B = All Compact Models.	D = Conventional Cab.
DUTY	AD = 2 Wheel Drive Only (Ramcharger).	CB-MB = Compact Front Section Only.	W = Conventional Cab 4 Wheel Drive.
CODES:	AW = 4 Wheel Drive Only (Ramcharger).	P = Forward Control Chassis.	M = Motor Home.

MEDIUM-HEAVY CODES: XNT = Low Cab Forward. D = Conventional Cab. S = School Bus. W = 4-Wheel Drive.

AR=Use as Required

=New Part Number

Printed in U.S.A.

June, 1982

