

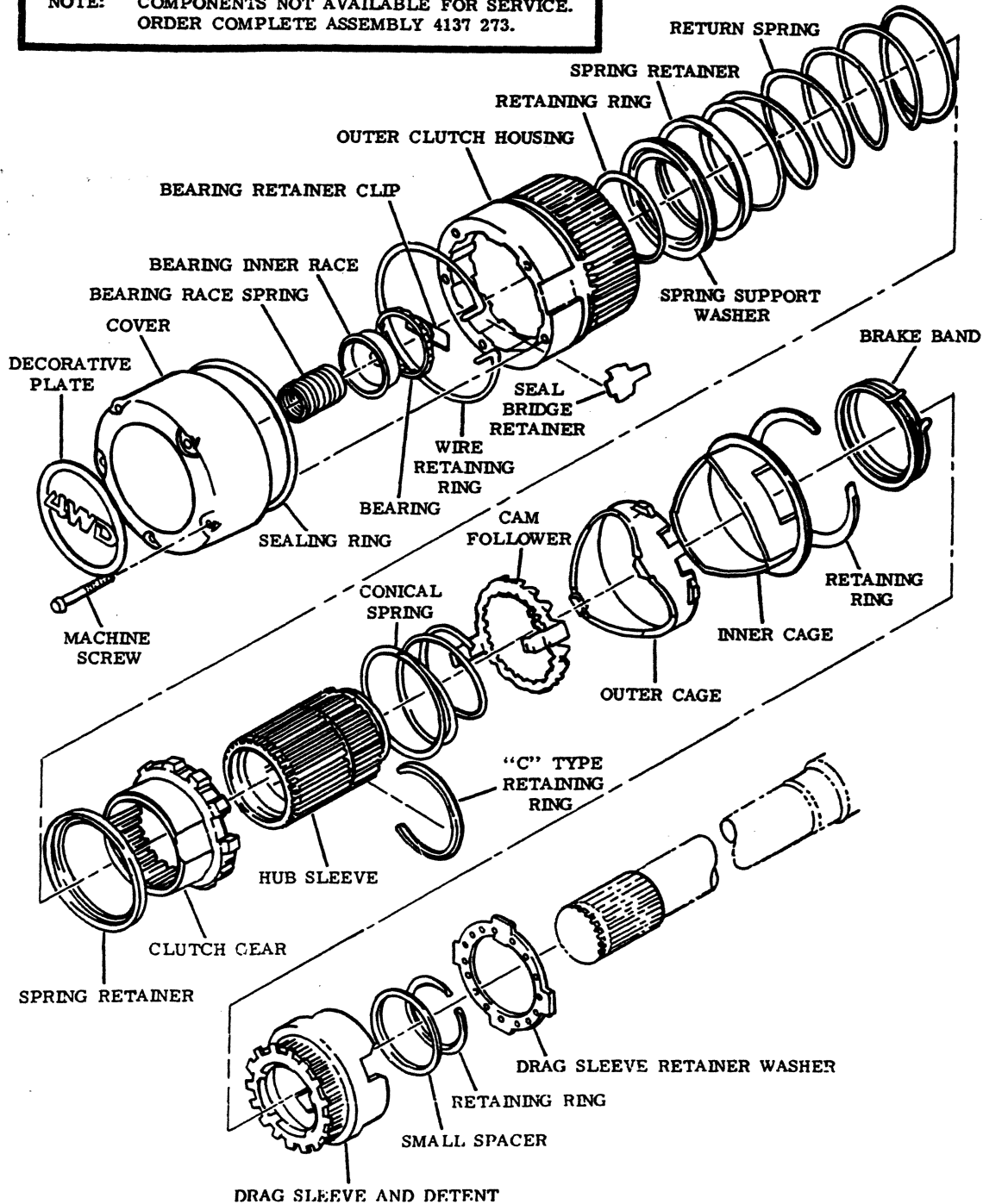
GROUP 2 - FRONT SUSPENSION

AXLE COMPONENTS,FRONT M3-4-5-6	Fig. 2-1500
AXLE, FRONT SPICER 44F-BJ,3500 LB. W1-2, AW1, RD2, 1980-81	Fig. 2-270
AXLE,FRONT SPICER 44F-BJ,3500 LB. W1, AW1, 1978-9	Fig. 2-100
AXLE,FRONT Spicer 44F-BJ,3500 LB. W2, RD2, 1978-9	Fig. 2-200
AXLE,FRONT SPICER 60-4500 LB. W2-3-4	Fig. 2-300
AXLE,FRONT M3-4-5,1978	Fig. 2-1425
AXLE,FRONT M6,1978	Fig. 2-1450
AXLE,FRONT M3-4-5-6 1979-80	Fig. 2-1475
BORG WARNER AUTOMATIC LOCKING HUB SPICER 44BJ-3500 LB AW1,W1-2,1980-81	Fig. 2-25
CASE KIT,DIFFERENTIAL SPICER 44F-BJ,3500 LB. W1-2, AW1, 1980-81	Fig. 2-280
DIFFERENTIAL CASE KIT SPICER 44F-BJ,3500 LB. W1,AW1-2, 1978-9	Fig. 2-250
DIFFERENTIAL CASE KIT Spicer 60-4500 LB. W2-3-4	Fig. 2-750
DIFFERENTIAL PARTS KIT SPICER 44F-BJ,3500 LB. W1-2, AW1, 1978-9	Fig. 2-265
DIFFERENTIAL PARTS KIT SPICER 44F-BJ,3500 LB. W1-2, AW1, 1980-81	Fig. 2-290
DIFFERENTIAL,FRONT AXLE SPICER 44F-BJ,3500 LB. W1-2, AW1, 1978-9	Fig. 2-240
DIFFERENTIAL,FRONT AXLE SPICER 44F-BJ,3500 LB. W1-2, AW1, 1980-81	Fig. 2-275
DIFFERENTIAL,FRONT AXLE Spicer 60-4500 LB. W2-3-4	Fig. 2-600
GEAR & LINKAGE,POWER STEERING M3-4-5	Fig. 2-1325
GEAR & LINKAGE,POWER STEERING M600	Fig. 2-1350
GEAR & LINKAGE,STEERING CB,MB,B1-2-3,1978	Fig. 2-1100
GEAR & LINKAGE,STEERING CB,MB,B1-2-3,1979-80-81	Fig. 2-1150
GEAR & LINKAGE,STEERING AD1,D1-2-3-4	Fig. 2-1200
GEAR & LINKAGE,STEERING RD2,AW1,W1-2-3-4	Fig. 2-1300
GEAR & PINION KIT SPICER 44F-BJ,3500 LB. W1-2, AW1, 1978-9	Fig. 2-260
GEAR & PINION KIT Spicer 60-4500 LB. W2-3-4	Fig. 2-950
GEAR & PINION KIT,DRIVE SPICER 44F-BJ,3500 LB. W1-2, AW1, 1980-81	Fig. 2-285
HUBS & COMPONENTS,LOCKING SPICER 3500 LB. & 4500 LB. AW1-W1,2,3,4 - 1980-81	Fig. 2-50
STABLIZER OR DAMPER,STEERING M3-4-5-6	Fig. 2-1600

8302 025

BORG WARNER AUTOMATIC LOCKING HUB SPICER 44BJ-3500 LB AW1,W1-2,1980-81

**NOTE: COMPONENTS NOT AVAILABLE FOR SERVICE.
ORDER COMPLETE ASSEMBLY 4137 273.**



ITEM	PART NUMBER	QTY	MODEL	DESCRIPTION
------	-------------	-----	-------	-------------

**BORG WARNER AUTOMATIC LOCKING HUB
SPICER 44BJ-3500 LB
AW1,W1-2,1980-81**

NOTE: COMPONENTS NOT AVAILABLE FOR SERVICE. ORDER COMPLETE ASSEMBLY 4137273

--	4137 273	2	AW1-W1,2	HUB, Borg Warner Automatic Locking-(Comple)-3500 Lb. Axle ("4WD")
	6025 668	2	W1,2,3-AW1	RING, Locking Hub Body External Retaining
	6031 996	2	W1,2,3-AW1	WASHER, Frt. Axle Shaft Stop
	4219 120	2	W1,2,3-AW1	Drag Sleeve Retainer Washer
--	4137 701	2	AW1-W1,2,3	KIT, AUTO LOCKING HUB CONSIST OF: Drag Sleeve Detent Washer & Brake Band Assy. (1) Cage - Outer (1) Instruction Sheet (1)
--	4137 704	2	AW1-W1,2,3	KIT, AUTO LOCKING HUB CONSIST OF: Bearing Race & Cup Assy. (1) Spring, Bearing Race (1)
--	4137 707	2	AW1-W1,2,3	SEAL KIT, AUTO LOCKING HUB CONSIST OF: Screws & "O" Ring Assy. Sealing Ring (1)

LIGHT	A = All Sport Utility (Ramcharger).	B = All Compact Models.	D = Conventional Cab.
DUTY	AD = 2 Wheel Drive Only (Ramcharger).	CB-MB = Compact Front Section Only.	W = Conventional Cab 4 Wheel Drive.
CODES:	AW = 4 Wheel Drive Only (Ramcharger).	P = Forward Control Chassis.	M = Motor Home.
MEDIUM-HEAVY CODES:	XNT = Low Cab Forward.	D = Conventional Cab.	S = School Bus. W = 4-Wheel Drive.

AR=Use as Required

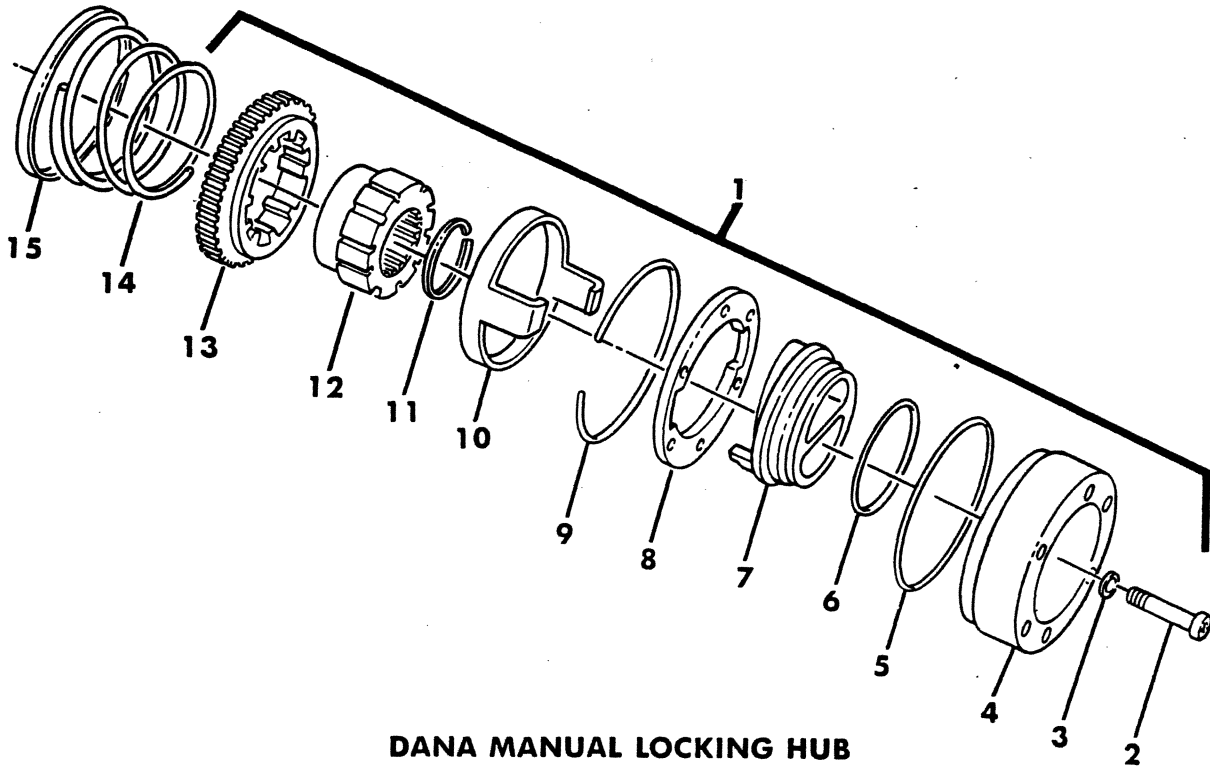
=New Part Number

Printed in U.S.A.

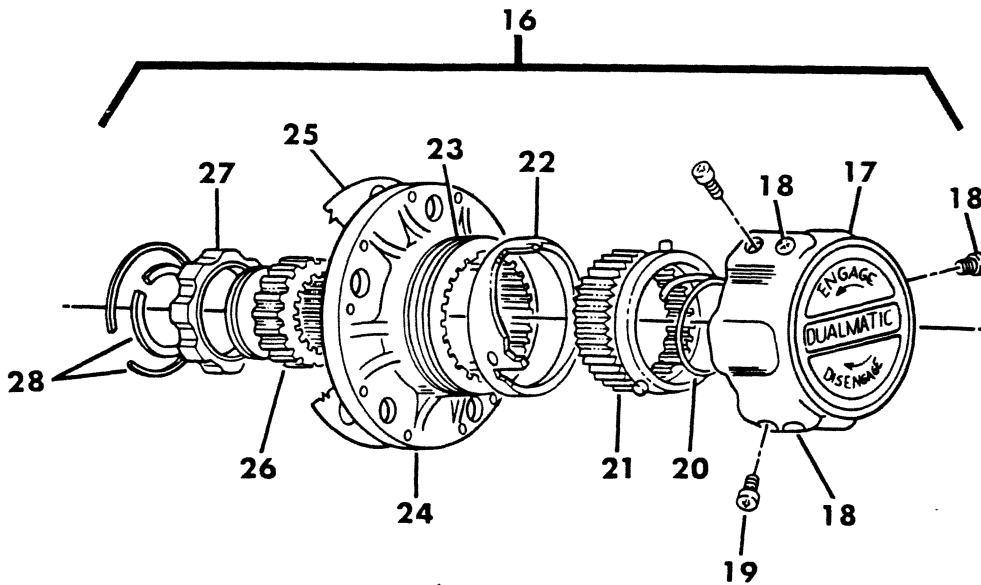
June, 1982

8302 050A

HUBS & COMPONENTS, LOCKING
SPICER 3500 LB. & 4500 LB.
AW1-W1,2,3,4 - 1980-81



DANA MANUAL LOCKING HUB



DUALMATIC LOCKING HUB (DISASSEMBLED)

ITEM	PART NUMBER	QTY	MODEL	DESCRIPTION
HUBS & COMPONENTS, LOCKING SPICER 3500 LB. & 4500 LB. AW1-W1,2,3,4 - 1980-81				
1	4164 860	2	AW1,W1-2	HUB, Dana Manual Locking(Complete)-3500 lb. Axle
2	2954 179	12	AW1,W1-2	BOLT, Retaining (Also Serviced in 4164861)
3	2954 182	12	AW1-W1,2	WASHER, Retaining Bolt (Also Serviced in 4164861)
RETAINER KNOB, Hub Ring (Serviced in 4164861)				
5		2	AW1-W1,2	"O" RING, Retainer Knob (Serviced in 4164861)
6		2	AW1,W1-2	"O" RING, Actuator (Serviced in 4164861)
7		2	AW1,W1-2	KNOB, Actuator (Serviced in 4164861)
8		2	AW1,W1-2	RING, Outer Clutch Retaining (Serviced in 4176800)
9	2954 158	2	AW1,W1-2	SNAP RING, Internal
10		2	AW1,W1-2	CAM BODY, Actuating (Serviced in 4176800)
11	2228 241	2	AW1,W1-2	SNAP RING, Axle Shaft Outer
12		2	AW1,W1-2	SLEEVE & RING, Axle Shaft (Serviced in 4176800)
13		2	AW1,W1-2	DRIVE GEAR RING, (Serviced in 4176800)
14	2906 306	2	AW1-W1,2	SPRING, Pressure
15	2953 963	2	AW1-W1,2	PLATE, Manual Locking Hub Spring
--	4164 861	AR	AW1-W1,2	HUB, CAP & COVER ASSY.
--	4176 800	AR	AW1-W1,2	REPAIR PKG., Dana Locking Hub CONSIST OF: CLUTCH RING - Outer CLUTCH GEAR - Axle Shaft CAM BODY - Actuating
16	4089 021	2	W2,3,4	HUB, Dualmatic Manual Locking (Complete) - 4500 Lb.
17	4219 116	2	W2,3,4	HANDLE ASSY., Dualmatic Lock Hub
18		6	W2,3,4	SCREW, Cam (Serviced in 4219118 Kit)
19		6	W2,3,4	SCREW, Shift Knob Retaining (Serviced in 4219118 Kit)
20		2	W2,3,4	SPRING, (Service in Assy.)
21		2	W2,3,4	GEAR, Sliding (Service in Assy.)
22		2	W2,3,4	CAM, (Service in Assy.)
23		4	W2,3,4	"O" RING, (Serviced in 4219118 Kit)
24	4219 117	2	W2,3,4	BASE ASSY., Dualmatic Lock Hub
25		2	W2,3,4	GASKET, (Serviced in 4219118 Kit)
26		2	W2,3,4	GEAR, Drive Shaft (Service in Assy.)
27		2	W2,3,4	BUSHING, (Service in Assy.)
28		4	W2,3,4	SNAP RING, (Service in Assy.)
..... consists of: 2----- gaskets 2----- o-rings 4----- screws 12----- locking clips				
--	4219 118	AR	W2,3,4	KIT, Dualmatic Lock Hub CONSIST OF: GASKET (2) "O" RINGS (2) SCREWS (4) LOCKING CLIPS (12)

LIGHT A = All Sport Utility (Ramcharger). B = All Compact Models. D = Conventional Cab.
DUTY AD = 2 Wheel Drive Only (Ramcharger). CB-MB = Compact Front Section Only. W = Conventional Cab 4 Wheel Drive.
CODES: AW = 4 Wheel Drive Only (Ramcharger). P = Forward Control Chassis. M = Motor Home.

MEDIUM-HEAVY CODES: XNT = Low Cab Forward. D = Conventional Cab. S = School Bus. W = 4-Wheel Drive.

AR=Use as Required

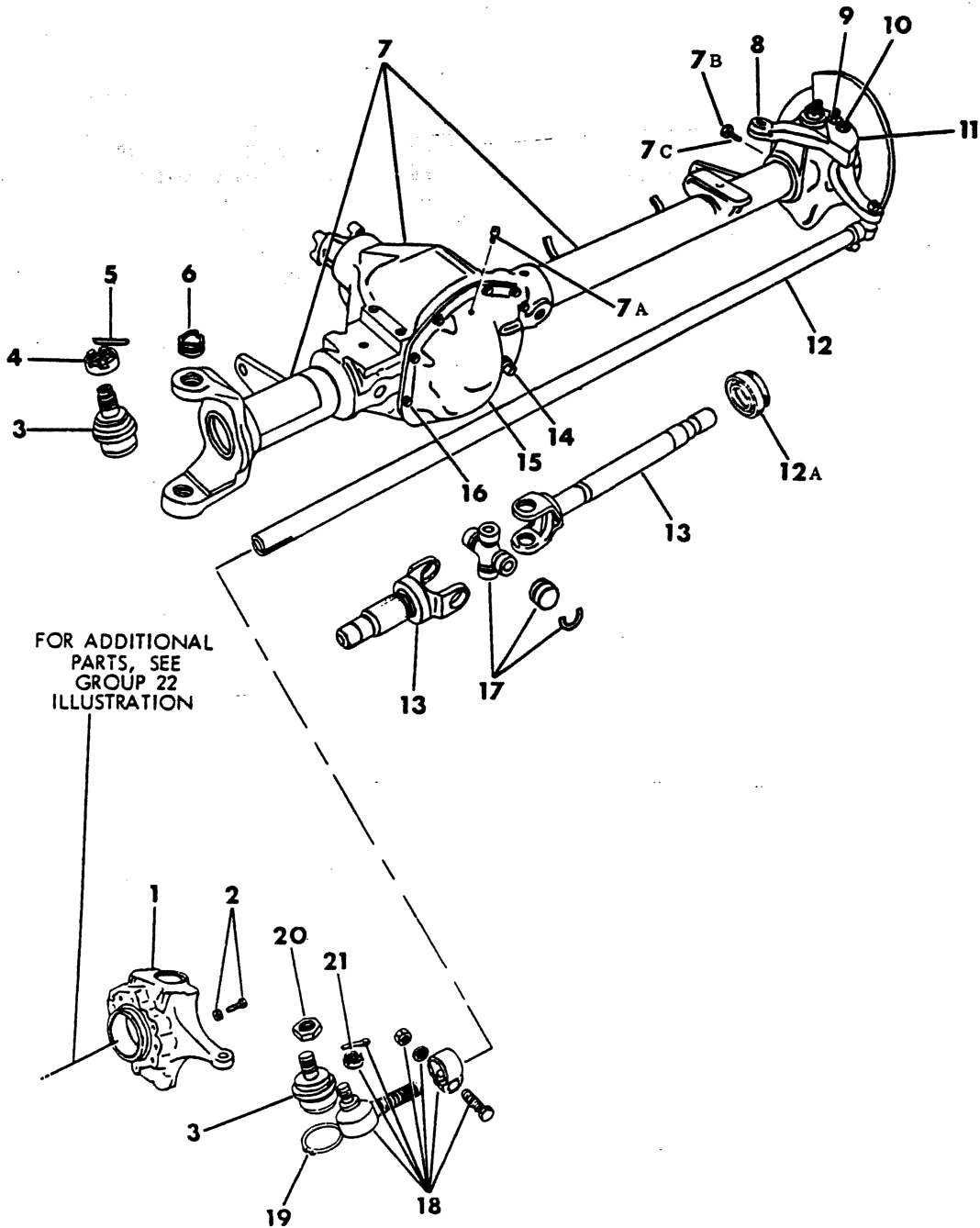
=New Part Number

Printed in U.S.A.

June, 1982

8302 100B

AXLE, FRONT
SPICER 44F-BJ, 3500 LB.
W1, AW1, 1978-9



ITEM	PART NUMBER	QTY	MODEL	DESCRIPTION
AXLE,FRONT				
SPICER 44F-BJ,3500 LB.				
W1, AW1, 1978-9				
NOTE:Front Axle Assy With Hub And Rotor-(COMPLETE)				
	4036 851	1	AW1,W1	Spicer-(610027-2),44BF-3500 LB.,3.54 Ratio-1978-79
1	4031 942	1		KNUCKLE KIT,Front Axle Steering-Right Consists Of: 1----- Knuckle 1-3634268 RING,Knuckle Socket 1-3634269 NUT,Knuckle Socket Ring 1-3634267 NUT,Knuckle Socket AR----- PIN,Cotter
	4031 943	1		KNUCKLE KIT,Front Axle Steering,Left Consists Of: 1----- KNUCKLE and ARM 1-3634268 RING,Knuckle Socket 1-3634269 NUT,Knuckle Socket Ring 1-3634267 NUT,Knuckle Socket AR----- PIN,Cotter 3-3634278 STUD,Knuckle Arm 3-3634270 NUT,Knuckle Arm Stud 3-3634277 ADAPTER,Knuckle Arm Stud
2	3822 818	2		SCREW,Steering Knuckle Stop
3	3894 976	2		SOCKET KIT,Front Axle Steering Knuckle Consists Of: 1----- SOCKET,Upper 1----- SOCKET,Lower 1-3634268 RING,Knuckle Socket 1-3634269 NUT,Knuckle Socket Ring 1-3634267 NUT,Knuckle Socket AR----- PIN,Cotter 2-3634266 RETAINER,Knuckle Socket Lower
4	3634 269	2		NUT,Steering Socket Adjusting Upper
5		AR		PIN,Cotter
6	3634 268	2		RING,Steering Socket Adjusting Upper
7	4131 252	1		HOUSING and Tube PACKAGE,Front Axle Repair Consists Of: 1----- Housing and Tube 1-4036856 PLATE,Spring Clip Seat 2-4036857 Clip,Spring
7A	1791 653	1		BREATHER,Diff.Carrier Cover
7B	3822 818	2		SCREW,Steering Knuckle Stop
7C	124 925	2		NUT,steering knuckle stop screw-not serviced
8	3894 977	1		ARM KIT,Steering Knuckle Consists Of: 1 ARM,Steering Knuckle

LIGHT A = All Sport Utility (Ramcharger).

B = All Compact Models.

D = Conventional Cab.

DUTY AD = 2 Wheel Drive Only (Ramcharger).

CB-MB = Compact Front Section Only.

W = Conventional Cab 4 Wheel Drive.

CODES: AW = 4 Wheel Drive Only (Ramcharger).

P = Forward Control Chassis.

M = Motor Home.

MEDIUM-HEAVY CODES: XNT = Low Cab Forward. D = Conventional Cab. S = School Bus. W = 4-Wheel Drive.

AR=Use as Required

= New Part Number

Printed in U.S.A.

June, 1982

1978-81 LIGHT DUTY TRUCK PARTS CATALOG

FRONT SUSPENSION

ITEM	PART NUMBER	QTY	MODEL	DESCRIPTION
AXLE,FRONT				
SPICER 44F-BJ,3500 LB.				
W1, AW1, 1978-9				
	3634 277	3		ADAPTER,Knuckle Arm Stud
	3634 270	3		NUT,Knuckle Arm Stud
9	3634 270	3		NUT,Knuckle Arm Stud
10	3634 278	3		STUD,Steering Knuckle Arm
11	3634 277	3		ADAPTER,Strg.Knuckle Arm Stud
12	4031 963	1		TUBE,Strg.Knuckle Tie Rod
12A	4116 366	2		SEAL & GUIDE,drive shaft
13	3822 805	1		SHAFT,Front Axle Drive-Inner-Right-16 7/8" Long
13	3822 806	1		SHAFT,Front Axle Drive-Inner-Left-37 1/8" Long
13	3822 807	2		SHAFT,Front Axle Drive-Outer
14				PLUG,Cover-(Serviced In Cover)
15	3893 985	1		COVER KIT,Differential Carrier-1978
				Consists Of:
				1----- Cover Assy.
				1-3634984 Gasket,Cover
				10-2954031 Bolt,Carrier Cover
	4210 964	1		COVER KIT,Diff. Carrier-1979
				Consists Of:-(Components Not Available At This Printing)
16	2954 031	10		BOLT,Diff. Carrier Cover
17	3744 918	2		CROSS PACKAGE,Drive Shaft
				CONSISTS OF:
				8----- BEARING,Cross
				8-3822808 RING,Cross Snap
18	4026 832	1		END PACKAGE,Tie Rod-Right
18	4026 833	1		END PACKAGE,Tie Rod-Left
19	3634 266	2		RETAINER,Strg. Knuckle Socket
20	3634 267	2		NUT,Strg. Knuckle Socket,Lower
21	1791 668	2		NUT,Knuckle Tie Rod Socket

LIGHT DUTY CODES: A = All Sport Utility (Ramcharger). B = All Compact Models. D = Conventional Cab.
 AD = 2 Wheel Drive Only (Ramcharger). CB-MB = Compact Front Section Only. W = Conventional Cab 4 Wheel Drive.
 AW = 4 Wheel Drive Only (Ramcharger). P = Forward Control Chassis. M = Motor Home.

MEDIUM-HEAVY CODES: XNT = Low Cab Forward. D = Conventional Cab. S = School Bus. W = 4-Wheel Drive.

AR=Use as Required

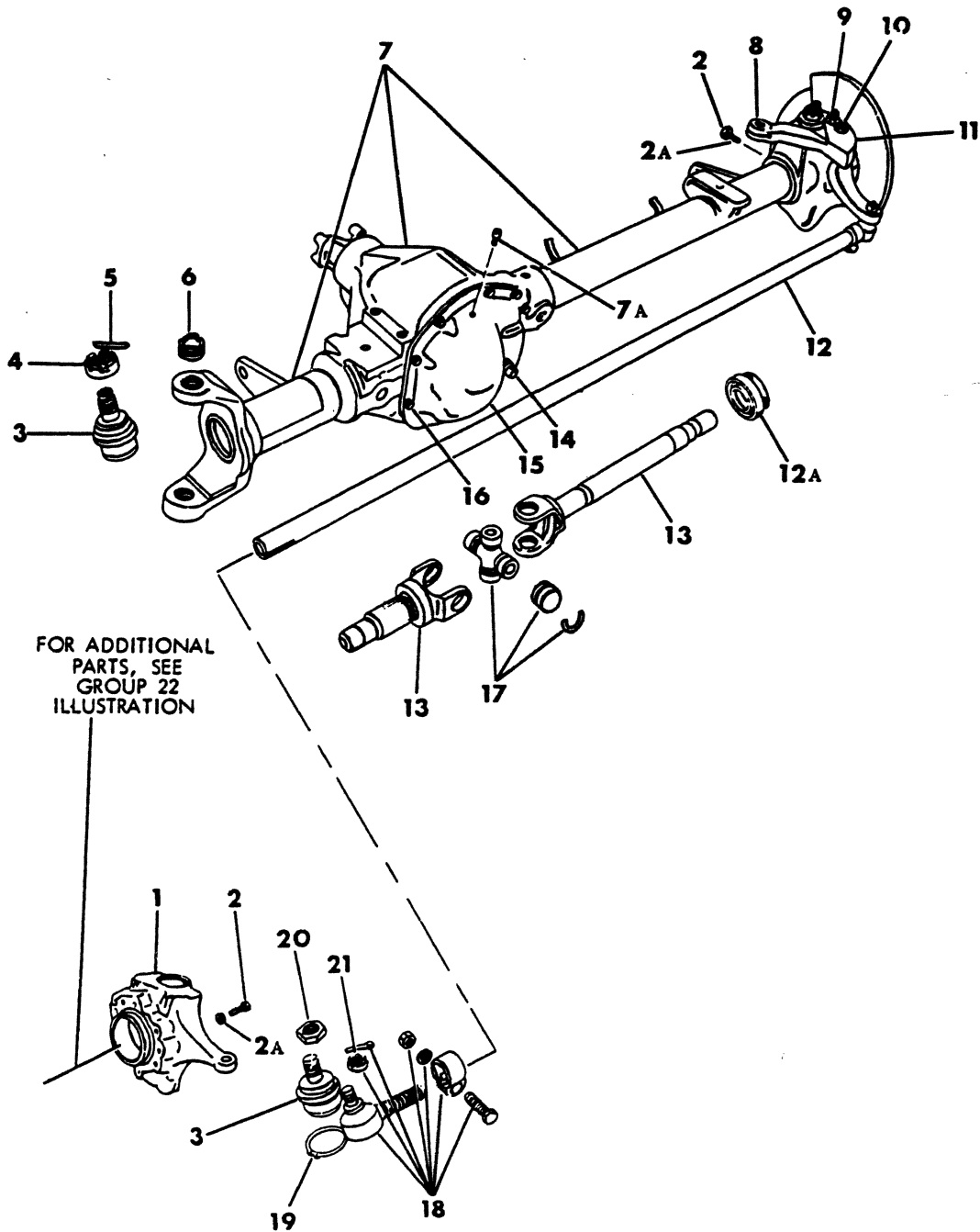
=New Part Number

Printed in U.S.A.

June, 1982

8302 200C

AXLE, FRONT
Spicer 44F-BJ, 3500 LB.
W2, RD2, 1978-9



ITEM	PART NUMBER	QTY	MODEL	DESCRIPTION
AXLE,FRONT				
Spicer 44F-BJ,3500 LB.				
W2, RD2, 1978-9				
1	4031 930		RD2,W2	KNUCKLE KIT,Front Axle Steering-Right
				Consists Of:
		1		Knuckle
	3634 268	1		Ring,Knuckle Socket
	3634 269	1		Nut,Knuckle Socket Ring
	3634 267	1		Nut,Knuckle Socket
		AR		PIN,Knuckle Socket Nut Cotter
	4031 928		W2	KNUCKLE KIT,Front Axle Steering-Left
				Consists Of:
		1		KNUCKLE and ARM
	3634 268	1		RING,Knuckle Socket
	3634 269	1		NUT,Knuckle Socket Ring
	3634 267	1		NUT,Knuckle Socket
		AR		PIN,Cotter
	3634 278	3		STUD,Knuckle Arm
	3634 270	3		NUT,Knuckle Arm Stud
	3634 277	3		ADAPTER,Knuckle Arm Stud
	4086 645	1	RD2	KNUCKLE KIT,Front Axle Steering-Left
				Consists Of:
		1		Knuckle
	3634 268	1		Ring,Adjusting
	3634 269	1		NUT,Hexagon Slotted
		1		PIN,Cotter
	3634 267	1		NUT,Hexagon Lock Jam
		1		ARM,Steering-Refer To Steering Arm Kit-Item 8
	3634 277	3		ADAPTER,Stud
	3634 270	3		NUT,Stud
2	3822 818	2	W2	SCREW,Steering Knuckle Stop
2	3634 979	2	RD2	SCREW,Steering Knuckle Stop
2A	124 925	2	RD2	NUT,Knuckle Stop-Not Serviced
3	3894 976	2		SOCKET KIT,Front Axle Strg.Knuckle-Upper & Lower
				Consists Of:
		1		SOCKET,Upper
		1		SOCKET,Lower
	3634 268	1		RING,Knuckle Socket
	3634 269	1		NUT,Knuckle Socket Ring
	3634 267	1		NUT,Knuckle Socket
		AR		PIN,Cotter
	3634 266	2		RETAINER,Knuckle Socket Lower
4	3634 269	2		NUT,Steering Socket Adjusting Upper
5		AR		PIN,Cotter
6	3634 268	2		RING,Steering Socket Adjusting Upper
7	4131 253	1	W2	HOUSING and Tube PACKAGE,Front Axle Repair
				Consists Of:
				1----- Housing and Tube
				1-4036856 Plate,Spring Clip
				2-4036857 CLIP,Spring
	4086 642	1	RD2	HOUSING and Tube,Front Axle
7A	1791 653	1	W2	BREATHER,Diff.Carrier Cover

LIGHT A = All Sport Utility (Ramcharger).

B = All Compact Models.

D = Conventional Cab.

DUTY AD = 2 Wheel Drive Only (Ramcharger).

CB-MB = Compact Front Section Only.

W = Conventional Cab 4 Wheel Drive.

CODES: AW = 4 Wheel Drive Only (Ramcharger).

P = Forward Control Chassis.

M = Motor Home.

MEDIUM-HEAVY CODES: XNT = Low Cab Forward. D = Conventional Cab. S = School Bus. W = 4-Wheel Drive.

AR=Use as Required

= New Part Number

Printed in U.S.A.

June, 1982

1978-81 LIGHT DUTY TRUCK PARTS CATALOG

FRONT SUSPENSION

ITEM	PART NUMBER	QTY	MODEL	DESCRIPTION
AXLE,FRONT				
Spicer 44F-BJ,3500 LB.				
W2, RD2, 1978-9				
8	3894 977	1	W2	ARM KIT,Steering Knuckle Consists Of:
		1		ARM,Steering Knuckle
	3634 277	3		ADAPTER,Knuckle Arm Stud
	3634 270	3		NUT,Knuckle Arm Stud
	4086 646	1	RD2	ARM KIT,Steering Knuckle Consists Of:
		1		ARM,Steering Knuckle
9	3634 270	3		NUT,Knuckle Arm Stud
10	3634 278	3		STUD,Steering Knuckle Arm
11	3634 277	3		ADAPTER,Strg.Knuckle Arm Stud
12	4031 965	1	W2	TUBE,Strg.Knuckle Tie Rod
	4036 132	1	RD2	TUBE,Strg.Knuckle Tie Rod
12A	4116 366	2		SEAL and Guide,Drive Shaft
13	3893 992	1		SHAFT,Front Axle Drive,Inner,Right,16-1/8"Long
	3893 993	1		SHAFT,Front Axle Drive-Inner-Left-36-1/2"Long
	3822 807	2		SHAFT,Front Axle Drive-Outer
14				PLUG,Cover-(Serviced In Cover)
15	3893 985	1	W2	COVER KIT,Diff. Carrier-(w/Thd.Pipe Filler Plug)-1978 Consists Of:
		1		COVER and Threaded Plug
	3634 984	1		GASKET,Carrier Cover
	2954 031	10		BOLT,Carrier Cover
	4210 964	1		COVER KIT,Diff. Carrier-1979 Consists Of-(Components Not Available At This Printing)
16	2954 031	10		BOLT,differential carrier cover
17	3744 918	2		CROSS PACKAGE,Drive Shaft Consists Of:
		8		BEARING,Cross-Now Serviced In Pkg.
	3822 808	8		RING,Cross Snap
18	4026 832	1		END PACKAGE,Tie Rod-Right
18	4026 833	1		END PACKAGE,Tie Rod-Left
19	3634 266	1		RETAINER,steering knuckle socket
20	3634 267	2		NUT,strg knuckle socket-lower
21	1791 668	2		NUT,tie rod socket

LIGHT A = All Sport Utility (Ramcharger). B = All Compact Models. D = Conventional Cab.
DUTY AD = 2 Wheel Drive Only (Ramcharger). CB-MB = Compact Front Section Only. W = Conventional Cab 4 Wheel Drive.
CODES: AW = 4 Wheel Drive Only (Ramcharger). P = Forward Control Chassis. M = Motor Home.

MEDIUM-HEAVY CODES: XNT = Low Cab Forward. D = Conventional Cab. S = School Bus. W = 4-Wheel Drive.

AR=Use as Required

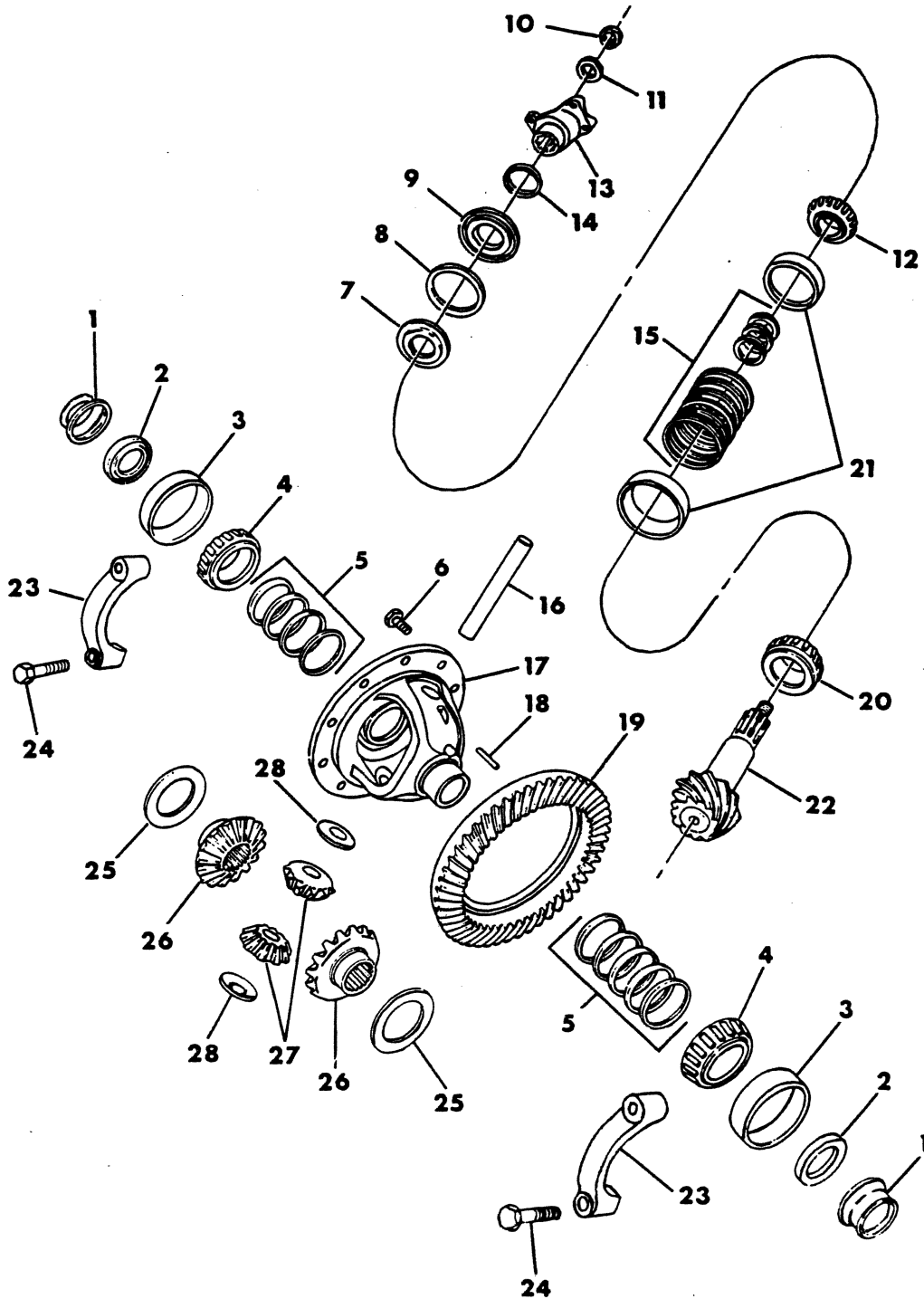
=New Part Number

Printed in U.S.A.

June, 1982

8302 240

DIFFERENTIAL, FRONT AXLE
SPICER 44F-BJ, 3500 LB.
W1-2, AW1, 1978-9



ITEM	PART NUMBER	QTY	MODEL	DESCRIPTION
DIFFERENTIAL,FRONT AXLE SPICER 44F-BJ,3500 LB. W1-2, AW1, 1978-9				
1	4116 366	2		GUIDE & SEAL, Drive Shaft
2		2		SEAL, Drive Shaft Guide Oil-Use Item 1
3	1793 510	2		CUP, Diff. Bearing
4	1790 523	2		CONE, Diff. Bearing
5				SHIM, Diff. Bearing Adjusting
	1791 568	AR		.003
	1791 569	AR		.005
6	1791 564	10		SCREW, Drive Gear
7	4031 974	1		SLINGER, Drive Pinion Oil
8		1		GASKET-Serviced In Item 9
9	2961 190	1		SEAL, Gasket & Oil
10				NUT, Pinion-Refer To Group 16
11				WASHER,Pinion Refer To Group 16
12	1793 516	1		CONE,Drive Pinion Bearing,Front
13				YOKE-Refer To Group 16
14				SLINGER-refer to group 16
15				SHIM,drive pinion bearing adjusting-front
	1791 583	AR		.003
	1791 584	AR		Front-.005
	1791 586	AR		Rear-.003
	1791 587	AR		Rear-.005
16	1935 851	1		SHAFT,Differential Pinion
17				CASE-Refer to Figure 2-250
18	1791 563	1		PIN,Pinion Shaft Lock
19		1	AW1,W1	GEAR-Refer To Figure 2-260
20	1793 513	1		CONE,Drive Pinion Bearing ,Rear
21	698 413	1		CUP,Drive Pinion Bearing ,Front
21	854 617	1		Cup,drive pinion bearing rear
22		1		PINION-Refer to Figure 2-260
23		2	AW1,W1	CAP,Serviced In Housing & Tube Assy.-4131252
23		2	W2	CAP,Serviced In Housing & Tube Assy.-3893988
24		4		SCREW,Carrier Housing Cap
25	3491 680	2		WASHER,Diff. Side Gear Thrust
26	2954 032	2		GEAR,Diff. Side
27	1791 560	2		PINION,differential
28	1791 561	2		WASHER,Diff.Pinion Thrust
NOTE: The Following Parts Are Not Illustrated.				
	3893 982	AR		SLINGER,Pinion Brg.Inner

LIGHT	A = All Sport Utility (Ramcharger).	B = All Compact Models.	D = Conventional Cab.
DUTY	AD = 2 Wheel Drive Only (Ramcharger).	CB-MB = Compact Front Section Only.	W = Conventional Cab 4 Wheel Drive.
CODES:	AW = 4 Wheel Drive Only (Ramcharger).	P = Forward Control Chassis.	M = Motor Home.
MEDIUM-HEAVY CODES:	XNT = Low Cab Forward.	D = Conventional Cab.	S = School Bus. W = 4-Wheel Drive.

AR=Use as Required

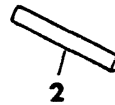
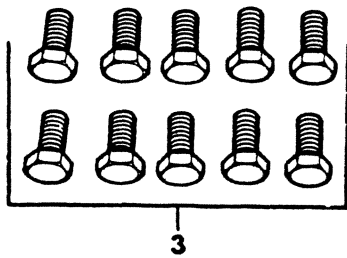
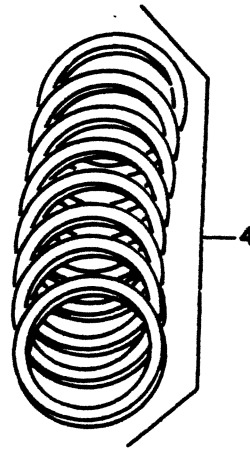
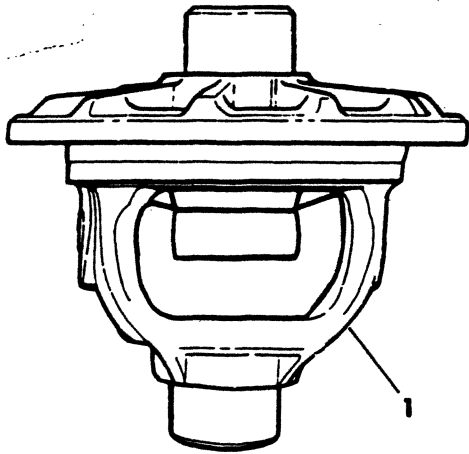
=New Part Number

Printed in U.S.A.

June, 1982

8302 250

DIFFERENTIAL CASE KIT
SPICER 44F-BJ, 3500 LB.
W1, AW1-2, 1978-9



ITEM	PART NUMBER	QTY	MODEL	DESCRIPTION
------	-------------	-----	-------	-------------

**DIFFERENTIAL CASE KIT
SPICER 44F-BJ,3500 LB.
W1,AW1-2, 1978-9**

CASE Kit ASSY, DIFFERENTIAL

3893 984 1
3893 983 1

2.94,3.23,3.54 ratio
4.09 ratio

CASE KIT ASSY.-consists of:

- 1----- case
- 1-1935851 Shaft, pinion
- 2-3491680 Washer, side gear thrust
- 2-1791560 Pinion, differential
- 2-1791561 Washer, diff. pinion thrust
- 1-1791563 Pin, lock
- 1-2954032 Gear, side

CASE Kit, Differential

4089 271 1 W1,AW1
4089 272 1 W1,AW1
4089 271 1 W2

3.23,3.54 Ratio
3.92 Ratio
3.54 Ratio

Case Kit-consists of:

- | | |
|---|--|
| 1 | 1----- CASE, Differential |
| 2 | 1-1791563 PIN, Shaft |
| 3 | 10-1791564 SCREW, Drive Gear |
| 4 | 1----- SHIM Kit, Diff. Bearing Adj.-See Note 1 |

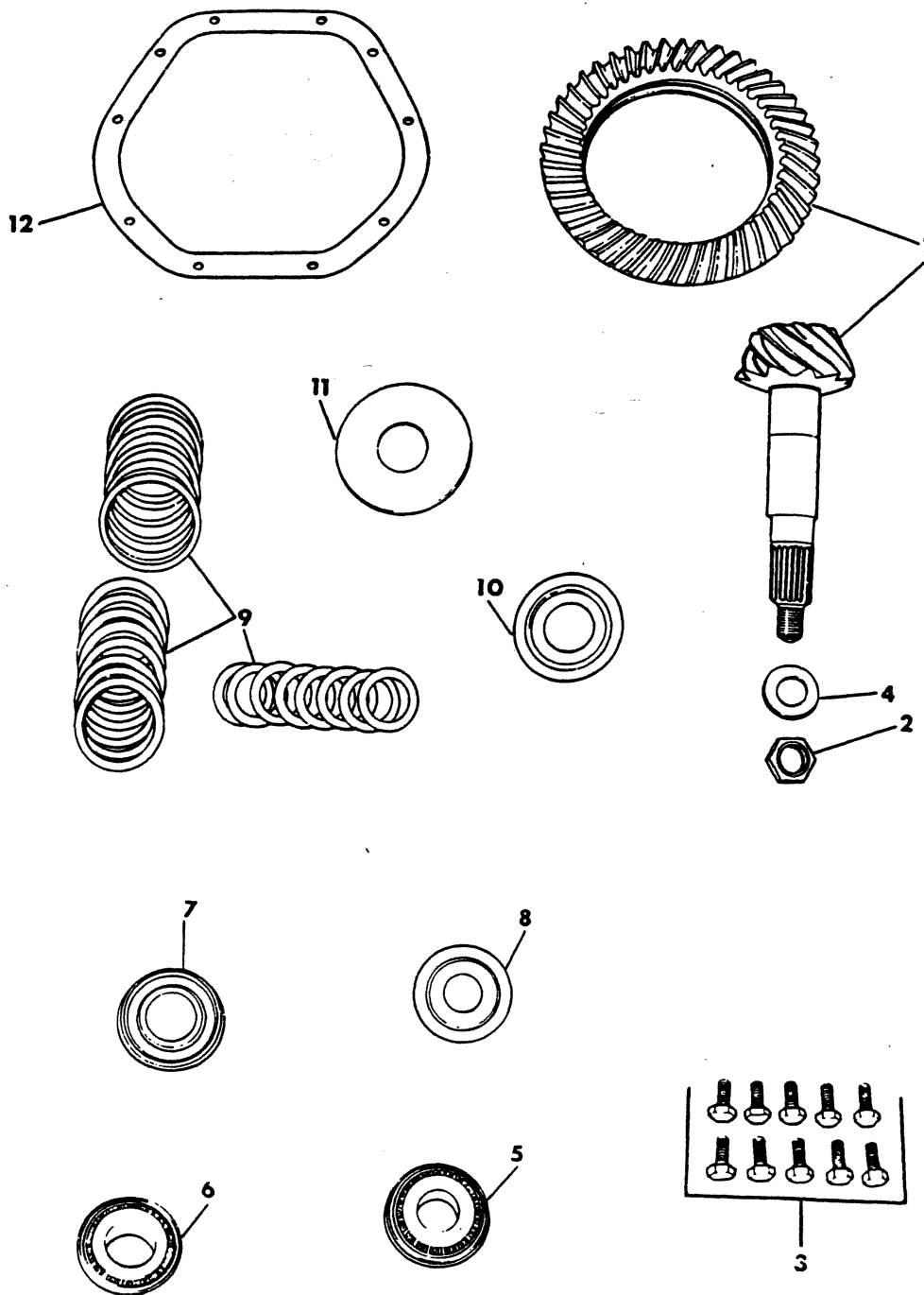
NOTE:1-SHIM KIT

- consists of:
AR 1791568 Shim-.003
AR 1791569 Shim-.005

LIGHT	A = All Sport Utility (Ramcharger).	B = All Compact Models.	D = Conventional Cab.
DUTY	AD = 2 Wheel Drive Only (Ramcharger).	CB-MB = Compact Front Section Only.	W = Conventional Cab 4 Wheel Drive.
CODES:	AW = 4 Wheel Drive Only (Ramcharger).	P = Forward Control Chassis.	M = Motor Home.
MEDIUM-HEAVY CODES: XNT = Low Cab Forward. D = Conventional Cab. S = School Bus. W = 4-Wheel Drive.			
AR=Use as Required		# = New Part Number	Printed in U.S.A. June, 1982

8302 260

GEAR & PINION KIT
SPICER 44F-BJ, 3500 LB.
W1-2, AW1, 1978-9



ITEM	PART NUMBER	QTY	MODEL	DESCRIPTION
------	-------------	-----	-------	-------------

**GEAR & PINION KIT
SPICER 44F-BJ,3500 LB.
W1-2, AW1, 1978-9**

ITEM	PART NUMBER	QTY	MODEL	DESCRIPTION
				GEAR & PINION KITS,drive
	3822 825	1	AW1,W1	3.23 Ratio
	3822 809	1	AW1,W1	3.54 Ratio
	3822 810	1	AW1,W1	3.92 Ratio
	3893 986	1	W2	4.09 Ratio
				consists of:items 1 thru 12
1				Gear & Pinion-3.23,3.54,4.09 ratio-only serviced in kits
1	3633 935	1		Gear & Pinion SET-(3.92 ratio only)
2		1		NUT,Pinion
3	1791 564	10		SCREW,Drive Gear
4	1791 576	1		WASHER,Pinion Nut
5				BEARING,Drive Pinion Rear-See Note:1
6				BEARING,Drive Pinion Front-See Note:1
7	2961 190	1		SEAL,Pinion Bearing
8	4031 974	1		SLINGER,Pinion Bearing Front
9		1		SHIM KIT,Drive Pinion Bearing-See Note:2
10	3893 982	1		SLINGER,Pinion Bearing Rear
11	3893 981	1		BAFFLE,Pinion Bearing
12	3634 984	1		GASKET,Carrier Cover

NOTE:(1)
DRIVE PINION BEARING

consists of:
CUP,Rear Bearing
CONE,Rear Bearing
CUP,Front Bearing
CONE,Front Bearing

	854 617	1	
	1793 513	1	
	698 413	1	
	1793 516	1	

NOTE: (2)
SHIM KIT,PINION

consists of:
SHIM-.003-Front Drive Pinion Bearing
SHIM-.005-Front Drive Pinion Bearing
SHIM-.003-Rear Drive Pinion Bearing
SHIM-.005-Rear Drive Pinion Bearing

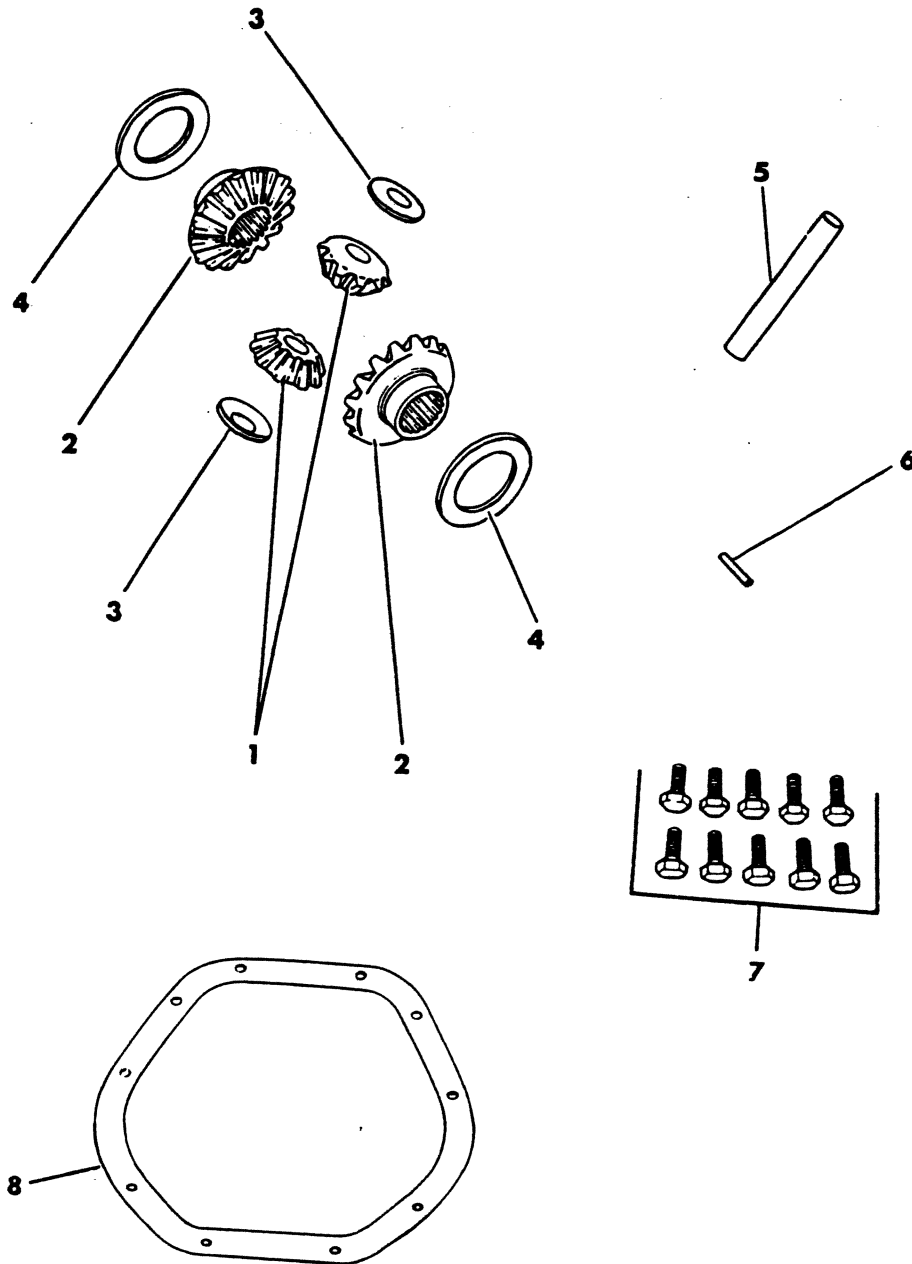
	1791 583	AR	
	1791 584	AR	
	1791 586	AR	
	1791 587	AR	

LIGHT DUTY CODES:	A = All Sport Utility (Ramcharger).	B = All Compact Models.	D = Conventional Cab.
	AD = 2 Wheel Drive Only (Ramcharger).	CB-MB = Compact Front Section Only.	W = Conventional Cab 4 Wheel Drive.
	AW = 4 Wheel Drive Only (Ramcharger).	P = Forward Control Chassis.	M = Motor Home.

MEDIUM-HEAVY CODES:	XNT = Low Cab Forward.	D = Conventional Cab.	S = School Bus.	W = 4-Wheel Drive.
AR=Use as Required	#=New Part Number			

3302 265

DIFFERENTIAL PARTS KIT
SPICER 44F-BJ, 3500 LB.
W1-2, AW1, 1978-9



ITEM	PART NUMBER	QTY	MODEL	DESCRIPTION
DIFFERENTIAL PARTS KIT SPICER 44F-BJ,3500 LB. W1-2, AW1, 1978-9				
	4089 273	1	AW1,W1-2	PARTS KIT,DIFFERENTIAL 3.23,3.54,3.92,4.09 Ratio
				Consists Of:
2	2954 025	2		Pinion,differential
2	2954 032	2		GEAR,Diff.Side
3	1791 561	2		WASHER,Diff. Pinion Thrust
4	3491 680	2		WASHER,Diff.Gear Thrust
5	1935 851	1		SHAFT,Diff.
6	1791 563	1		PIN,Diff.Shaft Lock
7	1791 564	10		BOLT,Drive Gear
8	3634 984	1		GASKET,Carrier Cover

LIGHT	A = All Sport Utility (Ramcharger).	B = All Compact Models.	D = Conventional Cab.
DUTY	AD = 2 Wheel Drive Only (Ramcharger).	CB-MB = Compact Front Section Only.	W = Conventional Cab 4 Wheel Drive.
CODES:	AW = 4 Wheel Drive Only (Ramcharger).	P = Forward Control Chassis.	M = Motor Home.

MEDIUM-HEAVY CODES: XNT = Low Cab Forward. D = Conventional Cab. S = School Bus. W = 4-Wheel Drive.

AR=Use as Required

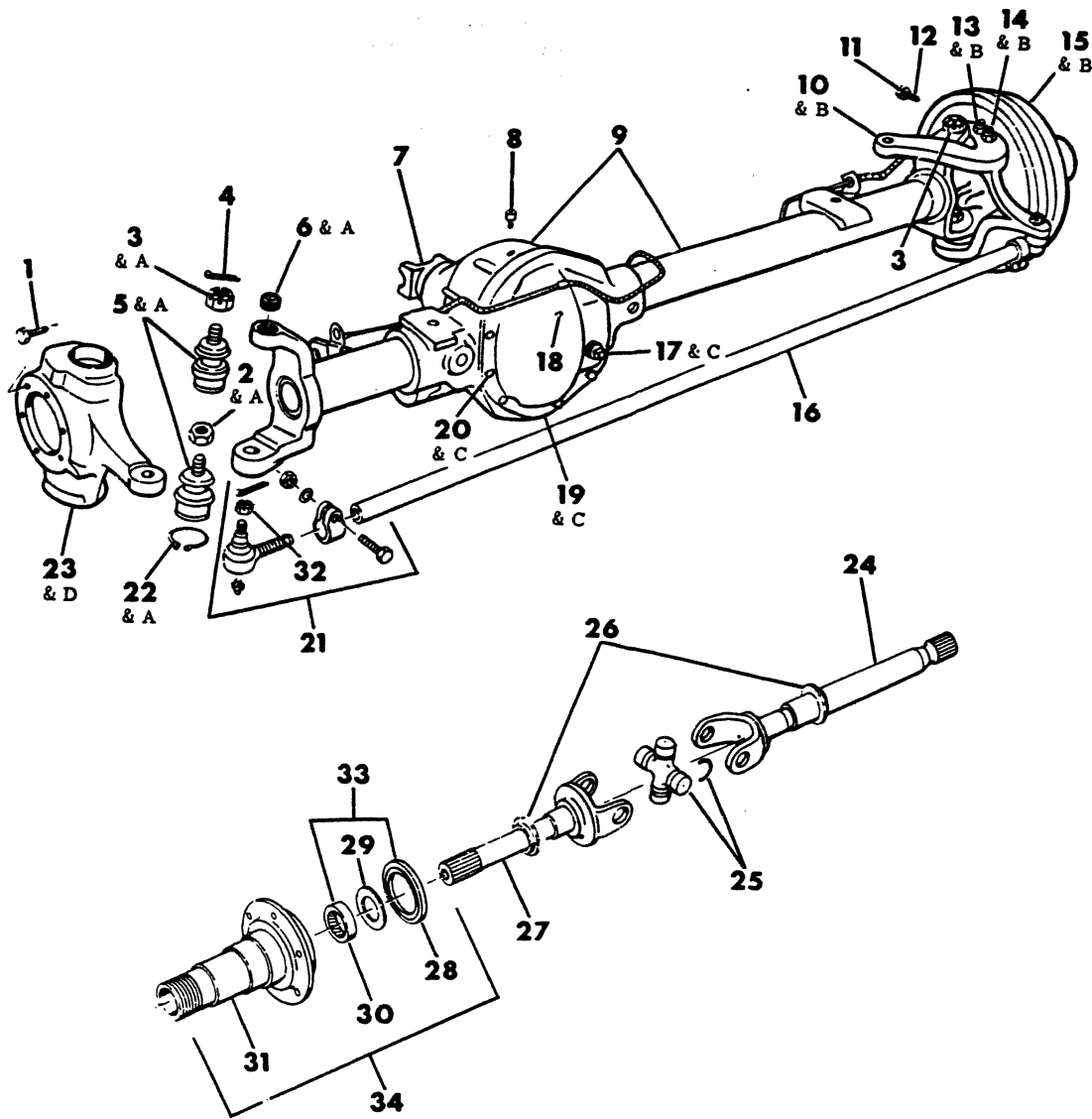
=New Part Number

Printed in U.S.A.

June, 1982

8302 270C

AXLE, FRONT
SPICER 44F-BJ, 3500 LB.
W1-2, AW1, RD2, 1980-81



ITEM	PART NUMBER	QTY	MODEL	DESCRIPTION
AXLE, FRONT SPICER 44F-BJ,3500 LB. W1-2, AW1, RD2, 1980-81				
1				BOLT, refer to group 5
2 & A	3634 267	2		NUT, knuckle socket lower
3 & A	3634 269	2		NUT, knuckle socket upper
4				PIN, cotter
5 & A				SOCKET, steering knuckle-serviced in item A
6 & A	3634 268	1		Ring, socket adjusting
7				Yoke, refer to group 16
8	3898 449	1		Vent, axle breather
9	4213 215	1	AW1, W1	Housing & Tube
9	4210 962	1	W2	Housing & Tube
9	4210 518	1	RD2	Housing & Tube
10 & B				Arm, steering knuckle-serviced in item B
11			AW, W	Nut, stop screw-not serviced
11			RD2	Nut, stop screw-not serviced
12			AW, W	Screw, stop-not serviced
12	3634 979	2	RD2	Screw, stop
13 & B	3634 270	3		Nut, knuckle arm stud
14 & B	3634 278	3		Stud, knuckle arm
15 & B	3634 277	3		Adapter, knuckle arm stud
16	4031 963	1	AW1, W1	Tube, knuckle tie rod
16	4031 965	1	W2	Tube, knuckle tie rod
16	4036 132	1	RD2	Tube, knuckle tie rod
17 & C				Plug, cover-serviced in item C
18	3898 449	1		BREATHER, Diff. Carrier Cover
19 & C				Cover-serviced in item C
20 & C	2954 031	10		Bolt, diff. carrier cover
21	4026 832	1		END PACKAGE, tie rod-right consists of: 1— End, 3/4-12-right hand side-(coarse thread) 1— Clamp 1— Pin 1— Clamp 1— Bolt 1-0272235 Nut 1— Locknut
21	4026 833	1		End Package, tie rod-left consists of: 1— End, 3/4-18-l.h side-(fine thread) 1— Clamp 1— Pin 1— Clamp 1— Bolt 1-0272235 Nut 1— Lockwasher
22 & A	3634 266	2		Retainer, socket-lower
23 & D	4210 520	1	AW1, W1	KNUCKLE, steering-right, also serviced in item D
23 & D	4219 003	1	AW1, W1	KNUCKLE with STUD, steering-left
23 & D	4210 520	1	RD2, W2	KNUCKLE, steering-right
23 & D	4219 002	1	RD2, W2	KNUCKLE with STUD, steering left

LIGHT A = All Sport Utility (Ramcharger). B = All Compact Models. D = Conventional Cab.
DUTY AD = 2 Wheel Drive Only (Ramcharger). CB-MB = Compact Front Section Only. W = Conventional Cab 4 Wheel Drive.
CODES: AW = 4 Wheel Drive Only (Ramcharger). P = Forward Control Chassis. M = Motor Home.

MEDIUM-HEAVY CODES: XNT = Low Cab Forward. D = Conventional Cab. S = School Bus. W = 4-Wheel Drive.

AR=Use as Required

=New Part Number

Printed in U.S.A.

June, 1982

1978-81 LIGHT DUTY TRUCK PARTS CATALOG

FRONT SUSPENSION

ITEM	PART NUMBER	QTY	MODEL	DESCRIPTION
AXLE, FRONT				
SPICER 44F-BJ,3500 LB.				
W1-2, AW1, RD2, 1980-81				
23 & D	4210 953	1	RD2	KNUCKLE,steering left
24	4210 956	1	AW1,W1	Shaft,drive-inner-right
24	4210 957	1	AW1,W1	Shaft,drive-inner-left
24	3893 992	1	W2	Shaft,drive-inner-right
24	3893 993	1	W2	Shaft,drive-inner-left
25	3744 918	AR		Cross Package,u-joint consists of: 1----- Cross 4----- Bearing 4-3822808 Snap ring
26	4210 959	2		Slinger,drive shaft
27	4210 958	2		Shaft,drive-outer
28	4210 530	2		Seal,spindle oil
29	3732 174	2		SPACER, Bearing Spindle
30				Bearing,spindle-serviced in item 33 & 34
31	4210 524	1		SPINDLE,front wheel-(spindle only)
32	1791 668	2		NUT,tie rod socket
33	4210 968	1	AW1,W1-2	BEARING & SEAL KIT,front wheel consists of: 1-4210530 Seal,oil 1-----Bearing,needle
34	4210 963	1	AW1,W1-2	SPINDLE ASSY.,front wheel bearing consists of: 1-4210524 Spindle 1-4210530 Seal,oil 1----- Bearing needle
NOTE: the following parts are not illustrated.				
	4210 967	1	AW1,W1-2	SPINDLE KIT,front wheel bearing-1980 consists of: 1----- spindle 1----- needle bearing 1----- v-oil seal 1----- spacer 1----- face seal
	4219 121	1	AW,W1-2	SPINDLE KIT,front wheel bearing-1981 consists of: 1----- spindle 1----- needle bearing 1----- v-oil seal 1----- spacer 1----- face seal
	4210 523	2	RD2	Spindle & Plug,front wheel
	4210 525	2	RD2	Plug,front wheel spindle
	4210 527	12		NUT,spindle & splash shield to knuckle bolt
	4210 528	12		WASHER,spindle & splash shield to knuckle bolt
	3865 307	12		BOLT,spindle & splash shield to knuckle
A	3894 976	1		SOCKET KIT,steering knuckle consists of: 1----- socket-upper

LIGHT A = All Sport Utility (Ramcharger). B = All Compact Models. D = Conventional Cab.
DUTY AD = 2 Wheel Drive Only (Ramcharger). CB-MB = Compact Front Section Only. W = Conventional Cab 4 Wheel Drive.
CODES: AW = 4 Wheel Drive Only (Ramcharger). P = Forward Control Chassis. M = Motor Home.

MEDIUM-HEAVY CODES: XNT = Low Cab Forward. D = Conventional Cab. S = School Bus. W = 4-Wheel Drive.

AR=Use as Required

=New Part Number

Printed in U.S.A.

June, 1982

ITEM	PART NUMBER	QTY	MODEL	DESCRIPTION
AXLE, FRONT				
SPICER 44F-BJ,3500 LB.				
W1-2, AW1, RD2, 1980-81				
				1----- socket-lower
				1-3634268 Ring,socket adjusting
				1-3634269 Nut,socket adjusting ring
				1----- Pin,cotter
				1-3634266 Retainer,socket-lower
				1-3634267 Nut,knuckle socket
B	3894 977	1	AW1,W1-2	ARM KIT,steering knuckle
B	4086 646	1	RD2	ARM KIT,steering knuckle
				consists of:
				1----- Arm
				3-3634277 Adapter
				3-3634270 Nut,stud
C	4210 964	1	AW1,W1-2	COVER KIT,differential carrier
				consists Of:-(components not available)
D	4210 965	1	AW1,W1	KNUCKLE KIT,steering-right
				consists of:-(components not available)
D	4210 966	1	AW1,W1	KNUCKLE KIT,steering-left
				consists of:-(components not available)
D	4210 535	1	W2	KNUCKLE KIT,steering-right-1980-81
				consists of:-(components not available)
D	4219 033	1	W2	KNUCKLE KIT,steering-left-1980
				consists of:-(components not available)
D	4219 043	1	W2	KNUCKLE KIT,steering-left-1981
				consists of:-(components not available)
D	4210 535	1	RD2	Knuckle Kit,Steering-Right
				consists of:(components not available)
D	4210 536	1	RD2	Knuckle Kit,Steering-Left
				consists of:(components not available)
E	4210 463	1	RD2	SPINDLE KIT,front wheel-1980

LIGHT	A = All Sport Utility (Ramcharger).	B = All Compact Models.	D = Conventional Cab.
DUTY	AD = 2 Wheel Drive Only (Ramcharger).	CB-MB = Compact Front Section Only.	W = Conventional Cab 4 Wheel Drive.
CODES:	AW = 4 Wheel Drive Only (Ramcharger).	P = Forward Control Chassis.	M = Motor Home.

MEDIUM-HEAVY CODES: XNT = Low Cab Forward. D = Conventional Cab. S = School Bus. W = 4-Wheel Drive.

AR=Use as Required

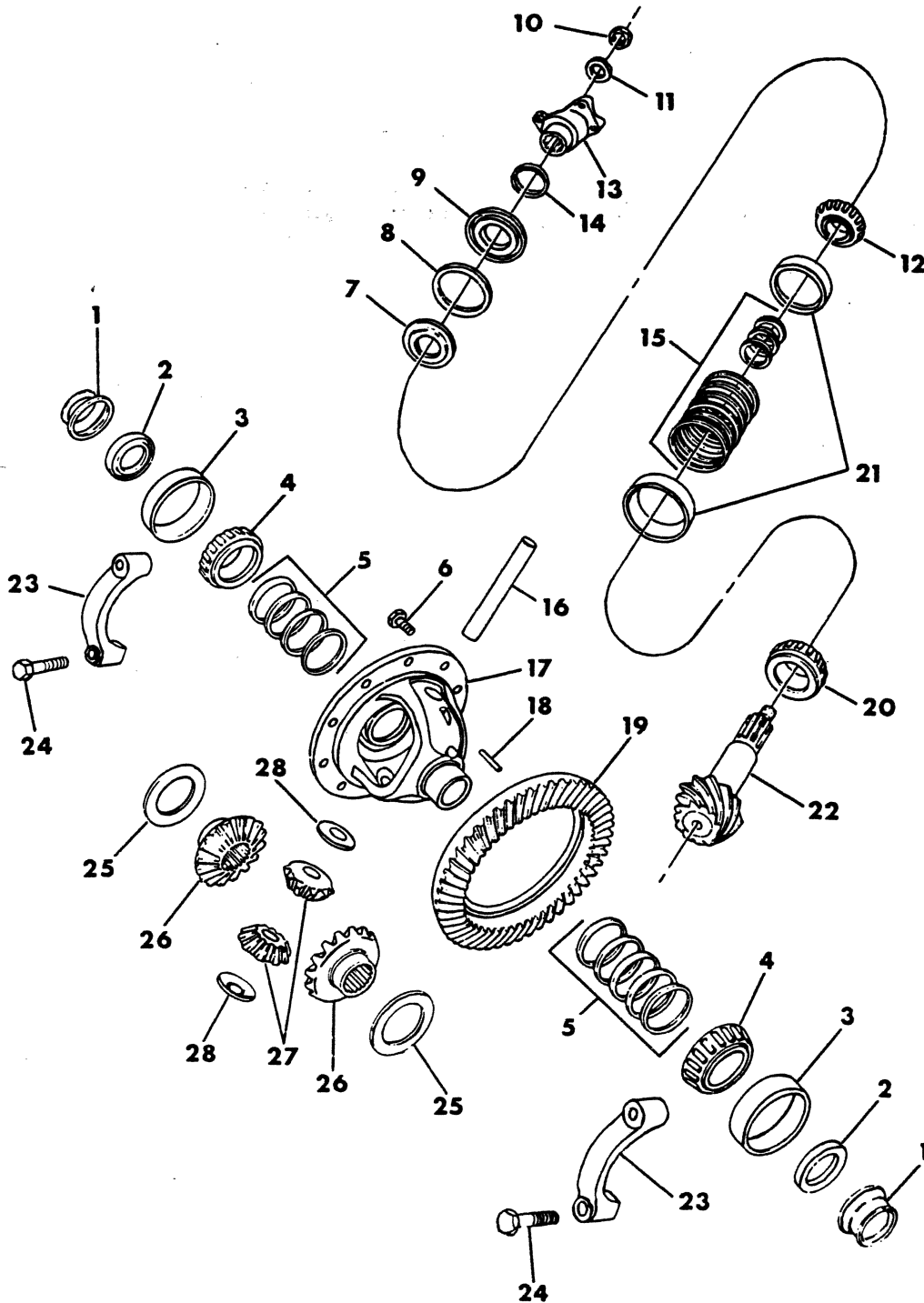
=New Part Number

Printed in U.S.A.

June, 1982

8302 275

DIFFERENTIAL, FRONT AXLE SPICER 44F-BJ, 3500 LB. W1-2, AW1, 1980-81



ITEM	PART NUMBER	QTY	MODEL	DESCRIPTION
DIFFERENTIAL,FRONT AXLE				
SPICER 44F-BJ,3500 LB.				
W1-2, AW1, 1980-81				
1	4116 366	2		GUIDE & SEAL,drive shaft
2				SEAL,drive shaft guide oil-use item 1
3	1793 510	2		Cup,differential bearing
4	1790 523	2		Cone,differential bearing
5				
6	1791 564	10		SCREW,drive gear
7	4031 974	1		Slinger,drive pinion bearing oil seal-front
8				
9	4213 202	1		Seal,drive pinion bearing oil
10				Nut,refer to group 16
11				Washer,refer to group 16
12	1793 516	1		Cone,drive pinion bearing-front
13				Yoke,refer to group 16
14				Slinger-refer to group 16
15				
16	1935 851	1		Shaft,differential pinion
17				
18	1791 563	1		Pin,lock
19				Gear-refer to figure 2-285
20	1793 513	1		Cone,drive pinion bearing-rear
21	698 413	1		Cup,drive pinion bearing-front
21	854 617	1		Cup,drive pinion bearing-rear
22				Pinion-refer to figure 2-285
23				Cap-serviced in 4210962 housing & tube
24				Screw,cap-not serviced
25	3491 680	2		Washer,diff. gear thrust
26	2954 032	2		Gear,differential side
27	1791 560	2		Pinion,differential
28	1791 561	2		Washer,differential pinion thrust

LIGHT	A = All Sport Utility (Ramcharger).	B = All Compact Models.	D = Conventional Cab.
DUTY	AD = 2 Wheel Drive Only (Ramcharger).	CB-MB = Compact Front Section Only.	W = Conventional Cab 4 Wheel Drive.
CODES:	AW = 4 Wheel Drive Only (Ramcharger).	P = Forward Control Chassis.	M = Motor Home.

MEDIUM-HEAVY CODES: XNT = Low Cab Forward. D = Conventional Cab. S = School Bus. W = 4-Wheel Drive.

AR=Use as Required

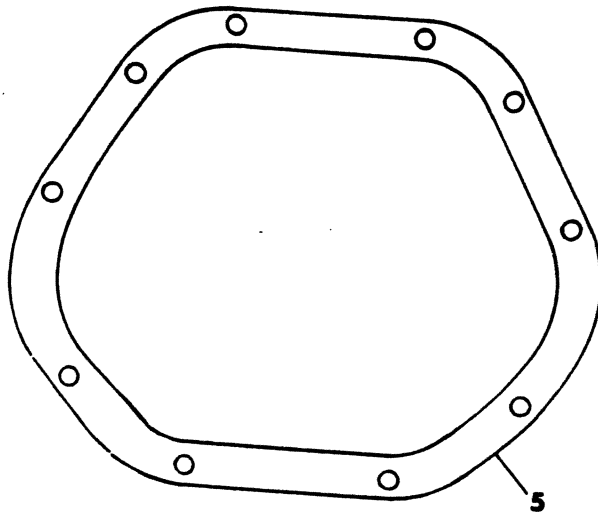
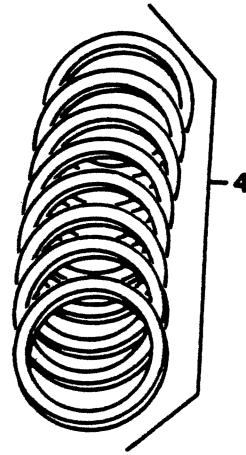
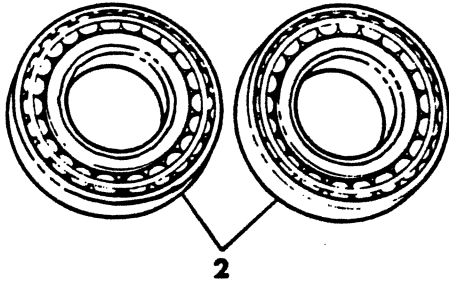
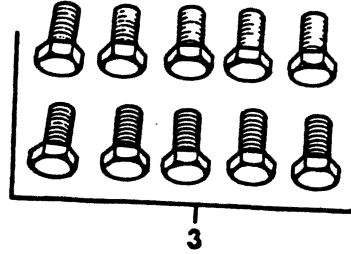
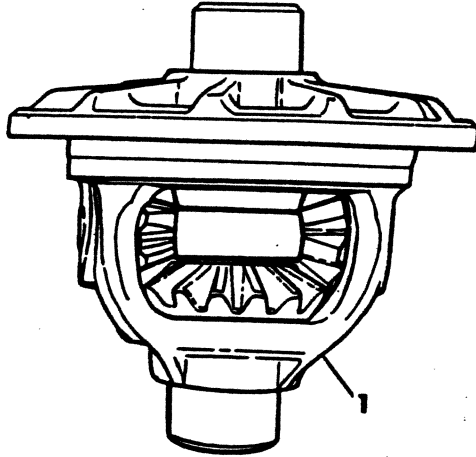
= New Part Number

Printed in U.S.A.

June, 1982

8302 280

CASE KIT, DIFFERENTIAL
SPICER 44F-BJ, 3500 LB.
W1-2, AW1, 1980-81



ITEM	PART NUMBER	QTY	MODEL	DESCRIPTION
CASE KIT,DIFFERENTIAL SPICER 44F-BJ,3500 LB. W1-2, AW1, 1980-81				
1				Case Kit Assy.,Differential
	3893 984	1		2.94,3.23,3.54 Ratio
	3893 983	1		4.09 ratio
				consists of:
				1----- Case
				1-1935851 Shaft,pinion
				2-3491680 Washer,side gear thrust
				2-1791560 pinion,diff.
				2-1791561 Washer,diff.pinion thrust
				1-1791563 Pin,lock
				2-2954032 Gear,side
1				CASE KIT,Differential
	4089 271	1		2.94,3.23,3.54 Ratio
	4089 272	1		4.09 ratio
				consists of:
				1----- Case-(case only)
				010-1791564 Screw
				1----- Shim kit
				1-1791563 Pin,lock
2				Bearing Kit,differential
				consists of:
				2-1790523 Cone & Roller
				2-1793510 Cup
3	1791 564	10		Screw,drive gear
4				Shim KIT,diff.
				consists of:
				Ar 1791568 Shim-.003
				Ar 1791569 Shim-.005
5	3634 984	1		Gasket,carrier cover

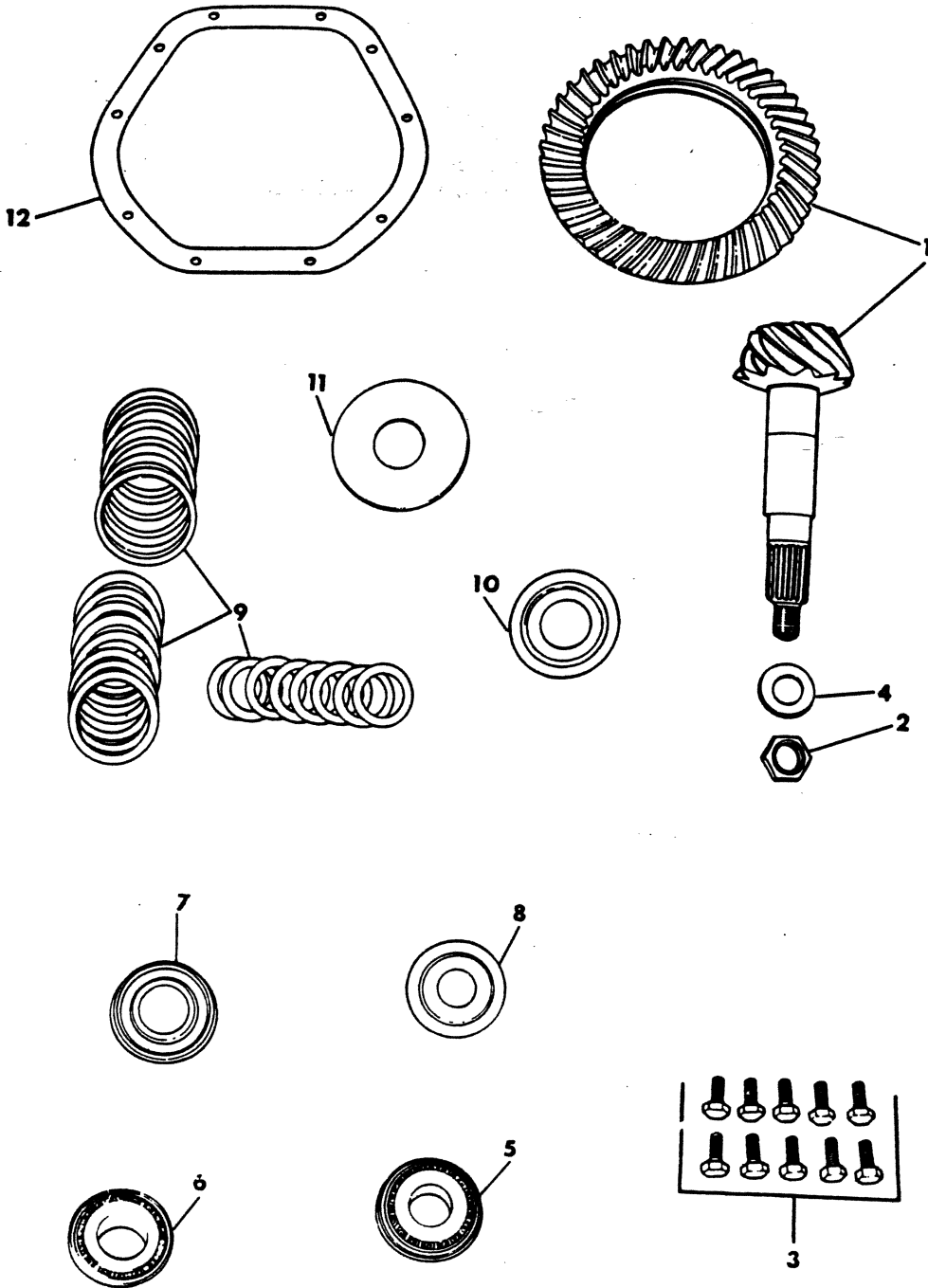
LIGHT DUTY CODES: A = All Sport Utility (Ramcharger). B = All Compact Models. D = Conventional Cab.
 AD = 2 Wheel Drive Only (Ramcharger). CB-MB = Compact Front Section Only. W = Conventional Cab 4 Wheel Drive.
 AW = 4 Wheel Drive Only (Ramcharger). P = Forward Control Chassis. M = Motor Home.

MEDIUM-HEAVY CODES: XNT = Low Cab Forward. D = Conventional Cab. S = School Bus. W = 4-Wheel Drive.

AR=Use as Required # =New Part Number Printed in U.S.A. June, 1982

8302 285

GEAR & PINION KIT, DRIVE
SPICER 44F-BJ, 3500 LB.
W1-2, AW1, 1980-81



ITEM	PART NUMBER	QTY	MODEL	DESCRIPTION
GEAR & PINION KIT,DRIVE SPICER 44F-BJ,3500 LB. W1-2, AW1, 1980-81				
GEAR & PINION KITS,drive				
	4213 222	1		2.94 Ratio
	3822 825	1		3.23 Ratio
	3822 809	1		3.54 Ratio
	3893 986	1		4.09 Ratio
consists of: item 1 thru 12				
1				1----- gear & pinion
2				1----- Nut,pinion
3				10-1791564 Screw,drive gear
4				1-1791576 Washer,pinion nut
5				1----- Bearing,drive pinion rear-see note 1
6				1----- Bearing,drive pinion front-see note 1
7				1-2961190 Seal,pinion bearing
8	4031 974	1		1-4031974 Slinger,pinion bearing front
9		1		Shim Kit,drive pinion bearing-see note:1
10				1-3893982 Slinger,pinion bearing rear
11	3893 981	1		Baffle,pinion bearing
12	3634 984	1		Gasket,carrier cover

Note:1-Drive Pinion Bearing

consists of:

1-0854617 Cup,rear bearing
 1-1793513 Cone,rear bearing
 1-0698413 Cup,front bearing
 1-1793516 Cone,front bearing

Note:2-Pinion Shim Kit

consists of:

AR-1791583 Shim,front drive pinion bearing-.003
 AR-1791584 Shim,front drive pinion bearing-.005
 AR-1791586 Shim,rear drive pinion bearing-.003
 AR-1791587 Shim,rear drive pinion bearing-.005

LIGHT DUTY CODES:	A = All Sport Utility (Ramcharger).	B = All Compact Models.	D = Conventional Cab.
	AD = 2 Wheel Drive Only (Ramcharger).	CB-MB = Compact Front Section Only.	W = Conventional Cab 4 Wheel Drive.
	AW = 4 Wheel Drive Only (Ramcharger).	P = Forward Control Chassis.	M = Motor Home.

MEDIUM-HEAVY CODES: XNT = Low Cab Forward. D = Conventional Cab. S = School Bus. W = 4-Wheel Drive.

AR=Use as Required

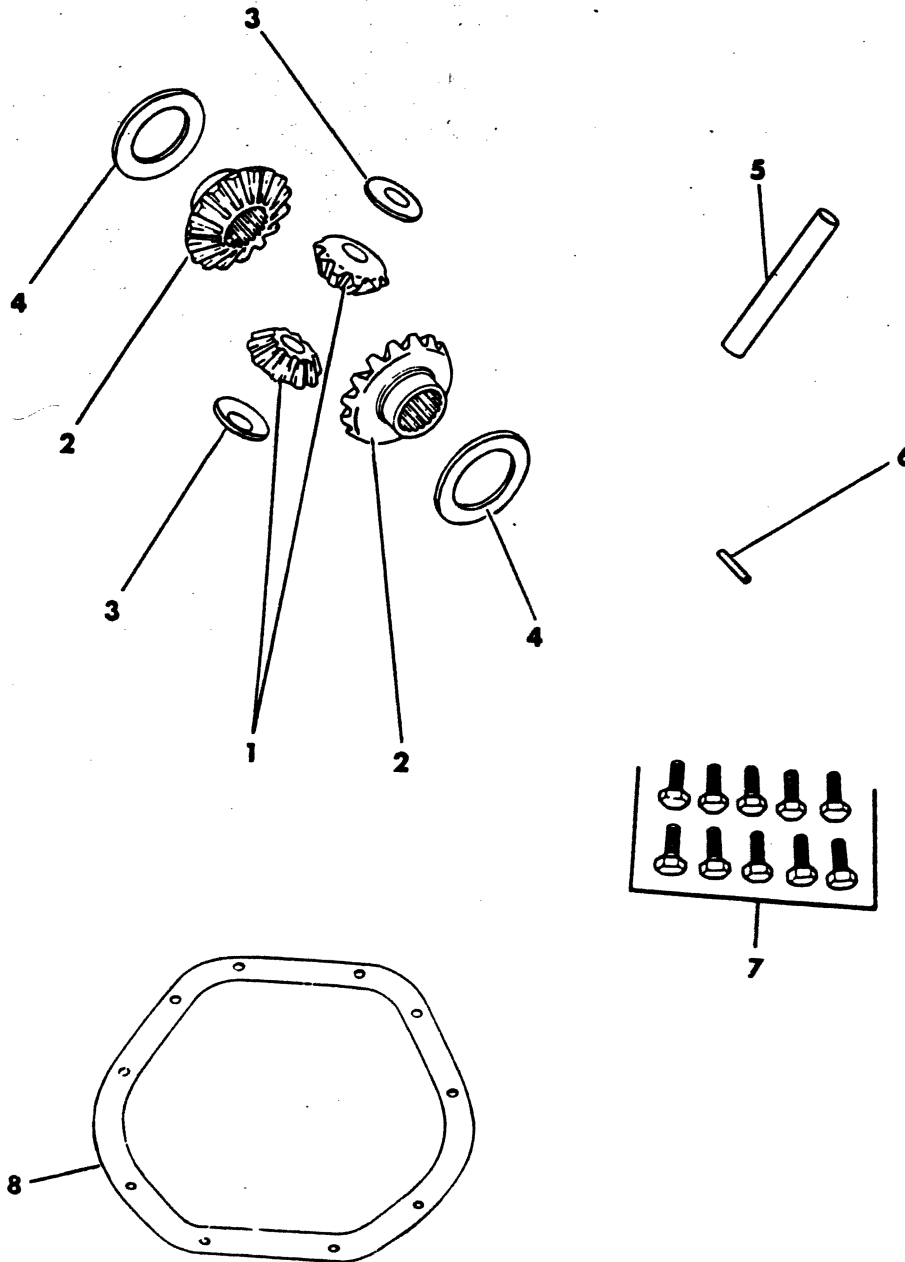
= New Part Number

Printed in U.S.A.

June, 1982

8302 290

DIFFERENTIAL PARTS KIT
SPICER 44F-BJ, 3500 LB.
W1-2, AW1, 1980-81



ITEM	PART NUMBER	QTY	MODEL	DESCRIPTION
DIFFERENTIAL PARTS KIT SPICER 44F-BJ,3500 LB. W1-2, AW1, 1980-81				
	4089 273	1		Parts Kit,Differential 3.23,3.54,4.09 Ratio
				consists of:
1				2-1791560 Pinion,differential
2				2-2954032 Gear,differential side
3				2-1791561 Washer,differential pinion thrust
4				2-3491680 Washer,differential gear thrust
5				1-1935851 Shaft,differential
6				1-1791563 Pin,differential shaft lock
7				10-1791564 Bolt,drive gear
8				1-3634984 Gasket,carrier cover

LIGHT A = All Sport Utility (Ramcharger).

B = All Compact Models.

D = Conventional Cab.

DUTY AD = 2 Wheel Drive Only (Ramcharger).

CB-MB = Compact Front Section Only.

W = Conventional Cab 4 Wheel Drive.

CODES: AW = 4 Wheel Drive Only (Ramcharger).

P = Forward Control Chassis.

M = Motor Home.

MEDIUM-HEAVY CODES: XNT = Low Cab Forward. D = Conventional Cab. S = School Bus. W = 4-Wheel Drive.

AR=Use as Required

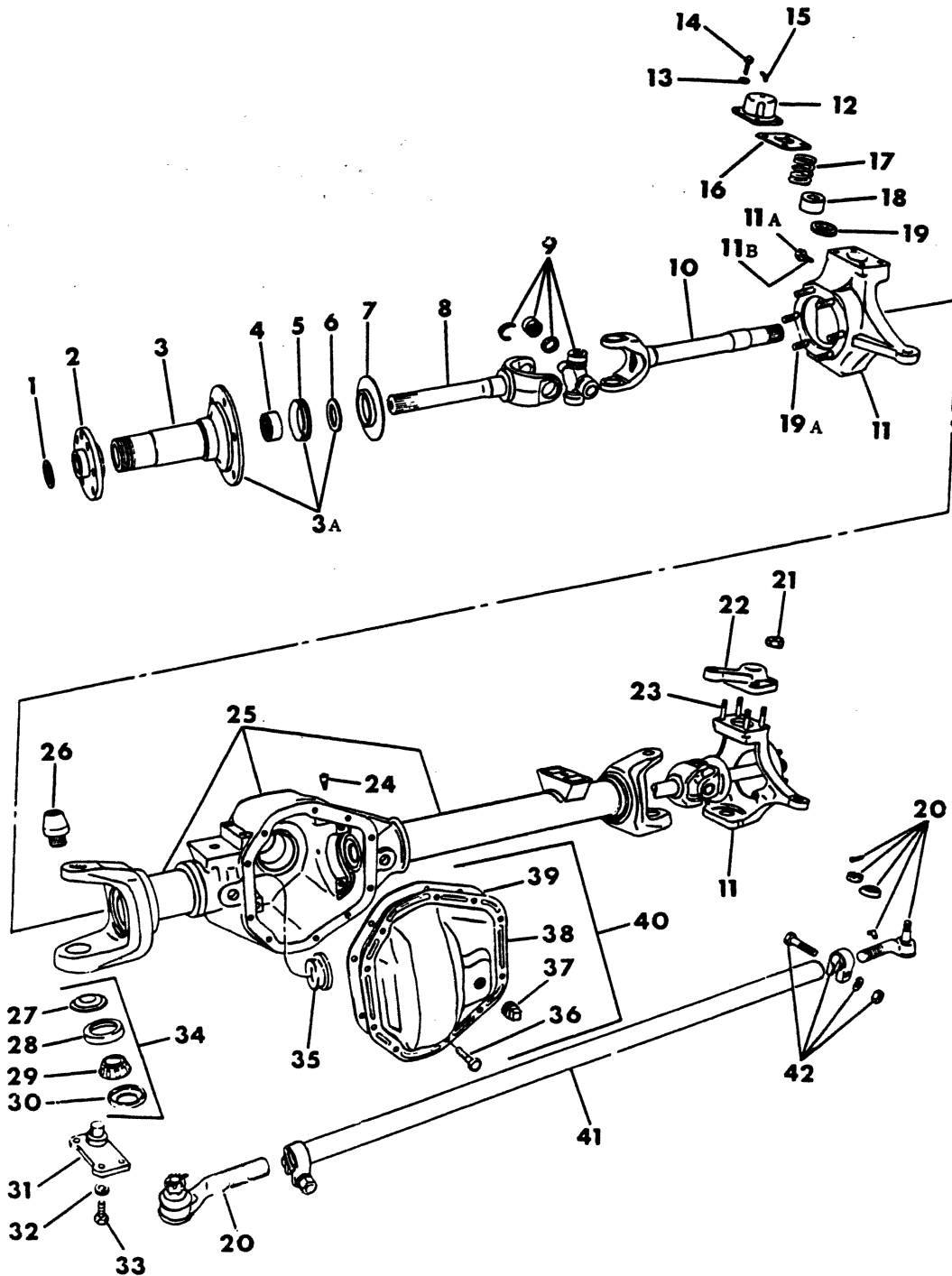
=New Part Number

Printed in U.S.A.

June, 1982

8302 300A

AXLE, FRONT
SPICER 60-4500 LB.
W2-3-4



ITEM	PART NUMBER	QTY	MODEL	DESCRIPTION
AXLE,FRONT SPICER 60-4500 LB. W2-3-4				
1	6030 766	2		RING,drive flange retaining
2	3894 148	2		FLANGE,Drive Shaft
3				SPINDLE-Refer To Item 43-in 4086640 kit-1978-79
3	4089 295	2		SPINDLE,front wheel bearing-1980-81
3A				SPINDLE KIT-Refer To Item 43-in 4086640 kit
4				BEARING-refer to item 43-in 4086641 kit
5				SEAL-refer to item 43-in 4086640 kit
6				SPACER-refer to item 43-in 4086640 kit
7	3894 111	2		SLINGER,front axle drive shaft
8	3894 165	2		SHAFT,front axle drive-outer
9	3837 585	2		CROSS PACKAGE,front axle drive shaft consists of: 4-3822808 ring,snap 4----- bearing race,cross 1----- cross
10	3894 166	1		SHAFT,Front Axle Drive-inner right
10	3894 167	1		SHAFT,Front Axle Drive-inner left
11	3894 122	1		KNUCKLE,front axle steering-right
11	3894 123	1		KNUCKLE,front axle steering-left
11A	3634 979	2		SCREW,steering knuckle stop
11B		2		NUT-not serviced
12	4089 298	1		CAP Without ARM,upper
13	3894 142	4		LOCKWASHER,Upper Cap Screw
14	3894 961	4		SCREW,Upper Cap-Right
15	3894 130	4		FITTING,Grease
16	3894 145	2		GASKET,Front Axle Steering Arm
17	3894 136	2		SPRING,King Pin Compression
18	3894 137	2		BUSHING,King Pin Upper
19				SEAL,king pin upper-serviced in item 34
19A	4032 086	12		BOLT,Front Axle Steering Knuckle
20	4026 830	1		END PACKAGE,Tie Rod-Right consists of: 1----- socket
20	4026 831	1		END PACKAGE,Tie Rod-Left consists of: 1----- cross
21	3894 128	4		NUT,Upper Cap Arm Stud-1978-79-80
21	1795 574	4		NUT,Upper Cap Arm Stud-1981
22	3894 129	1		ARM & CAP,Strg. Knuckle-Upper
23		4		STUD,front axle upper cap and arm-serviced in assy
24	3898 449	1		VENT,Front Axle Hsg. Breather
25	3894 110	1		Housing and Tube
26	3894 138	2		KING PIN,Upper
27				RETAINER,king pin grease lower-in item 34
28				CUP-in item 34
29				CONE-in item 34
30				SEAL, Lower - IN Item 34 - Lower
31	3894 139	2		CAP and KING PIN,Lower
32	3894 142	12		LOCKWASHER,Lower Cap Screw

LIGHT A = All Sport Utility (Ramcharger).

B = All Compact Models.

D = Conventional Cab.

DUTY AD = 2 Wheel Drive Only (Ramcharger).

CB-MB = Compact Front Section Only.

W = Conventional Cab 4 Wheel Drive.

CODES: AW = 4 Wheel Drive Only (Ramcharger).

P = Forward Control Chassis.

M = Motor Home.

MEDIUM-HEAVY CODES: XNT = Low Cab Forward. D = Conventional Cab. S = School Bus. W = 4-Wheel Drive.

AR=Use as Required

=New Part Number

Printed in U.S.A.

June, 1982

1978-81 LIGHT DUTY TRUCK PARTS CATALOG

FRONT SUSPENSION

ITEM	PART NUMBER	QTY	MODEL	DESCRIPTION
------	-------------	-----	-------	-------------

**AXLE,FRONT
 SPICER 60-4500 LB.
 W2-3-4**

33	3894 141	12		SCREW,Lower Cap
34	3894 964	1		KING PIN PARTS KIT,steering knuckle Consists Of: 1-4115851 SEAL,knuckle upper 1-3894147 SEAL,knuckle lower 1-3894148 RETAINER,knuckle lower 1----- CUP,knuckle bearing 1----- CONE,knuckle bearing
35	3894 131	2		SEAL,drive shaft oil inner
35	3894 121	2		SEAL,drive shaft oil outer
36	2952 474	10		BOLT,Diff.Carrier Cover
37		1		PLUG,differential cover-serviced in item 40
38		1		COVER,differential-serviced in item 40
39	3634 985	1		GASKET,Diff. Cover
40	3894 116			COVER KIT,Differential Carrier-1978 Contains Items 36,37,38,39
40	4210 618	1		COVER KIT,Diff. Carrier-1979-80 Consists Of:-(components not available)
40	4219 104	1		COVER KIT,differential carrier-1981 Consists Of:-(components not available)
41	4031 960	1		TUBE,Tie Rod
42	3736 094	2		Clamp Package,tie rod consists of: 1----- clamp 1----- bolt 1----- nut 1----- lockwasher
43	4086 640	1		SPINDLE KIT,Wheel Bearing Consists Of: 1-3894133 Spindle,Wheel Bearing 1-3894144 SPACER,Wheel Spindle 1-3894121 SEAL,Drive Shaft Oil
	4086 641	1		BEARING and SEAL KIT,Front Wheel Consists Of: 1----- Needle Bearing,Spindle 1-3894144-SPACER,Wheel Spindle 1-3894121 SEAL,Drive Shaft Oil-Outer 1-----SEAL,y-block or spindle bearing
NOTE: The Following Parts Are Not Illustrated.				
	4115 852	2		RETAINER,King Pin Compression Spring-1979-80-81
	4112 001	1		SEAL ASSY.,fрт.axle drive pinion brg.oil-1980-81
	4112 001	1		SEAL ASSY.,front axle drive pinion bearing-1980

LIGHT	A = All Sport Utility (Ramcharger).	B = All Compact Models.	D = Conventional Cab.
DUTY	AD = 2 Wheel Drive Only (Ramcharger).	CB-MB = Compact Front Section Only.	W = Conventional Cab 4 Wheel Drive.
CODES:	AW = 4 Wheel Drive Only (Ramcharger).	P = Forward Control Chassis.	M = Motor Home.
MEDIUM-HEAVY CODES:	XNT = Low Cab Forward.	D = Conventional Cab.	S = School Bus. W = 4-Wheel Drive.

AR=Use as Required

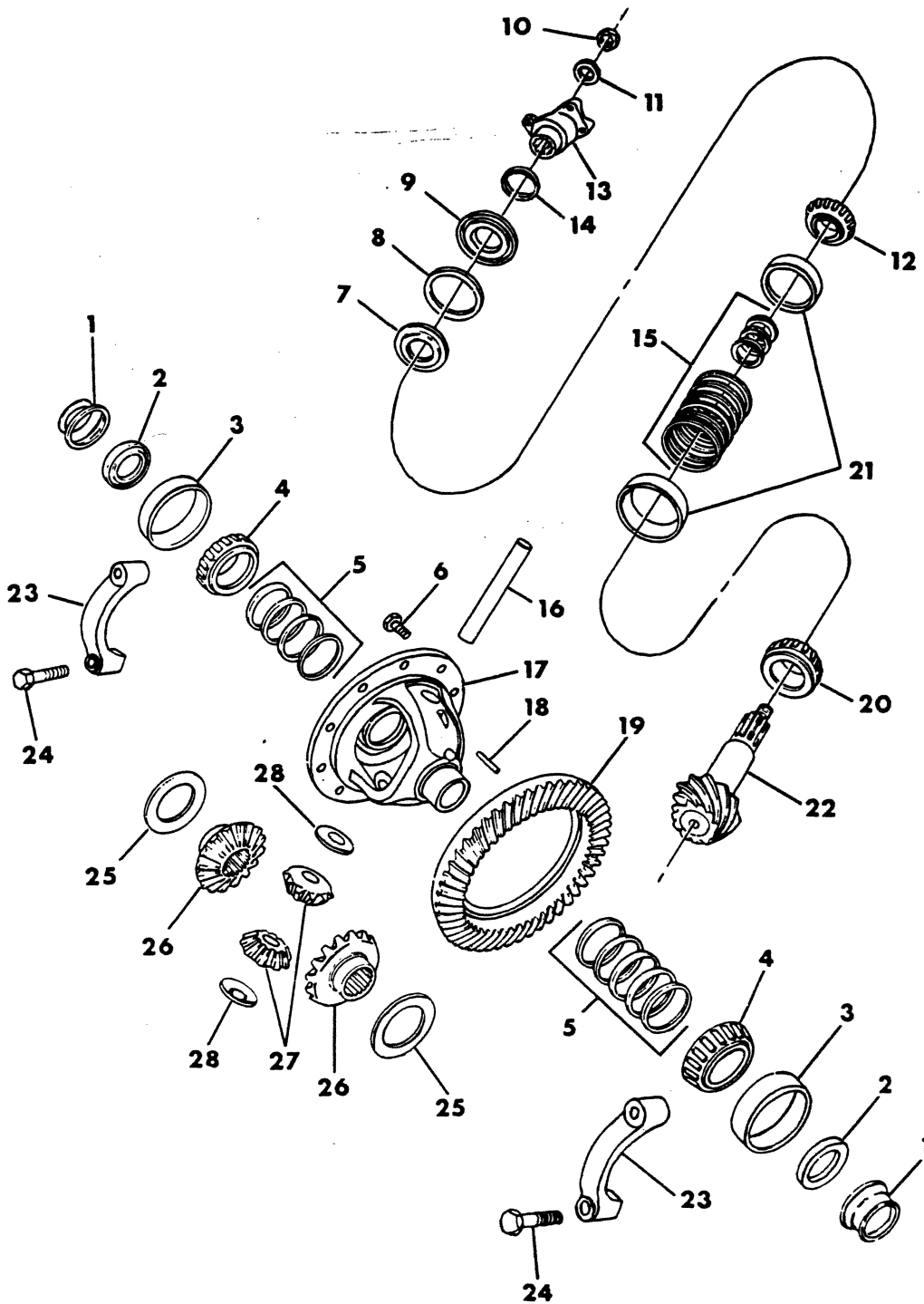
=New Part Number

Printed in U.S.A.

June, 1982

DIFFERENTIAL, FRONT AXLE Spicer 60-4500 LB. W2-3-4

8302 600



ITEM	PART NUMBER	QTY	MODEL	DESCRIPTION
DIFFERENTIAL,FRONT AXLE				
Spicer 60-4500 LB.				
W2-3-4				
1				GUIDE,drive shaft-part not used-refer to item 2
2	3894 121	2		SEAL,drive shaft guide oil outer
2	3894 131	2		SEAL,drive shaft guide oil inner
3				CUP-Refer To Figure 2-750
4				CONE-Refer To Figure 2-750
5	1795 152	AR		SHIM,Diff. Bearing Adjusting-.003
5	1795 153	AR		SHIM,Diff. Bearing Adjusting-.005
6	1795 170	12		SCREW,Drive Gear
7	1795 193	1		SLINGER,Drive Pinion Oil
8				GASKET-Serviced In Item 9
9	4112 001	1		SEAL,Gasket and Oil
10	1795 173	1		NUT,Pinion
11	1795 175	1		WASHER,Pinion
12				CONE-Refer To Figure 2-950
13				YOKE-Refer To Group 16
14				SHIELD-Refer To Group 16
15	1795 185	AR		SHIM,Drive Pinion Brg.Adjusting-Front-.003
15	1795 186	AR		SHIM,Drive Pinion Brg.Adjusting-Front-.005
15	1922 314	AR		SHIM,Drive Pinion Brg.Adjusting-Rear-.003
15	1922 315	AR		SHIM,Drive Pinion Brg.Adjusting-Rear-.005
16	1922 276	1		SHAFT,Diff. Pinion
17				CASE-Refer To Figure 2-750
18	9432 419	1		PIN,Pinion Shaft Lock
19				GEAR-Refer To Figure 2-950
20				CONE-Refer To Figure 2-950
21				CUP,Front-Refer to Figure 2-950
21				CUP,Rear-Refer To Figure 2-950
22				PINION-Refer To Figure 2-950
23				CAP-serviced in (3894110) housing & tube assy.,refer to figure 2-300
24	180 183	4		SCREW,Carrier Hsg. Cap
25	2961 848	2		WASHER,Diff. Side Gear Thrust
26				GEAR,Diff.Side-Refer To Figure 2-750
27	2908 520	2		PINION,Diff.
28	3507 543	2		WASHER,Diff. Pinion Thrust

LIGHT	A = All Sport Utility (Ramcharger).	B = All Compact Models.	D = Conventional Cab.
DUTY	AD = 2 Wheel Drive Only (Ramcharger).	CB-MB = Compact Front Section Only.	W = Conventional Cab 4 Wheel Drive.
CODES:	AW = 4 Wheel Drive Only (Ramcharger).	P = Forward Control Chassis.	M = Motor Home.

MEDIUM-HEAVY CODES: XNT = Low Cab Forward. D = Conventional Cab. S = School Bus. W = 4-Wheel Drive.

AR=Use as Required

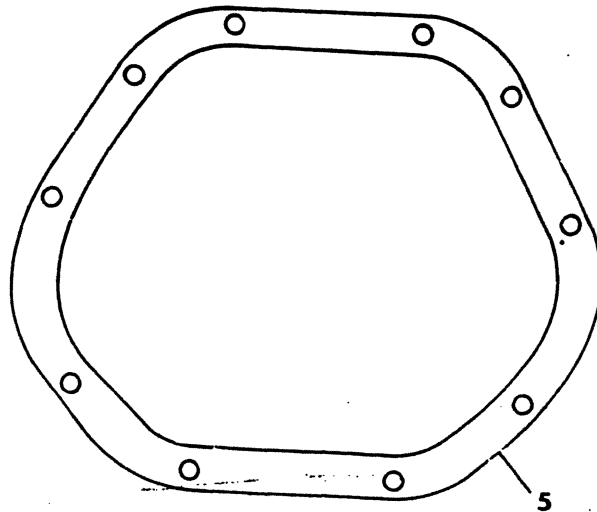
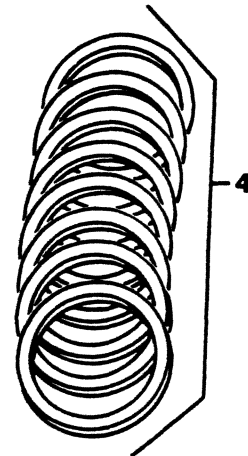
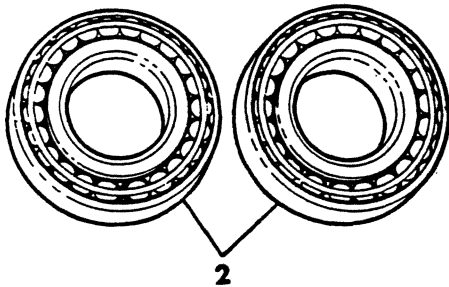
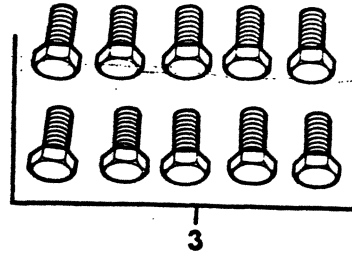
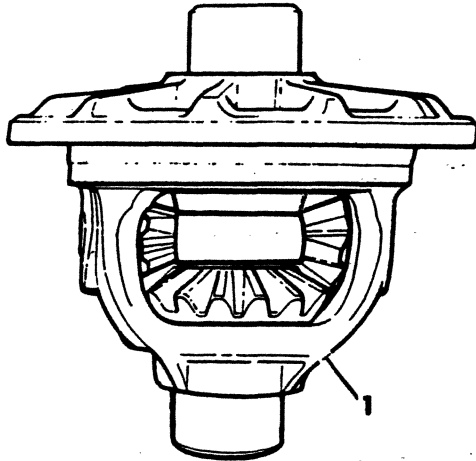
=New Part Number

Printed in U.S.A.

June, 1982

8302 750

DIFFERENTIAL CASE KIT
Spicer 60-4500 LB.
W2-3-4



ITEM	PART NUMBER	QTY	MODEL	DESCRIPTION
------	-------------	-----	-------	-------------

DIFFERENTIAL CASE KIT
Spicer 60-4500 LB.
W2-3-4

ITEM	PART NUMBER	QTY	MODEL	DESCRIPTION
				CASE KIT,Differential
	3894 114	1		4.10 Ratio
	3894 115	1		4.56,4.88 ratio
				Case Kit Consists Of:
1		1		CASE ASSY.,Differential-See Note:1
2		1		BEARING KIT,Differential-See Note:2
3	1795 170	12		SCREWS,Drive Gear
4		1		SHIM KIT,differential bearing adjusting-see note:3
5	3634 985	1		GASKET,Carrier Cover

Note:1-differential case assy.

consists of:

	1922 271	1		CASE-Used In 3894114 Kit
	1922 355	1		CASE-Used In 3894115 Kit
	1922 276	1		SHAFT,Pinion
	2961 848	2		WASHER,Side Gear Thrust
	2908 520	2		PINION
	3507 543	2		Washer,differential pinion thrust
	9432 419	1		PIN,Lock
		2		GEAR,Side

Note:2-differential bearing kit

consists of:

	1799 295	2		CUP,Differential Bearing
	1799 296	2		CONE,Differential Bearing

Note:3-differential bearing adjusting shim kit

consists of:

	1795 152	AR		SHIM-.003
	1795 153	AR		SHIM-.005

LIGHT	A = All Sport Utility (Ramcharger).	B = All Compact Models.	D = Conventional Cab.
DUTY	AD = 2 Wheel Drive Only (Ramcharger).	CB-MB = Compact Front Section Only.	W = Conventional Cab 4 Wheel Drive.
CODES:	AW = 4 Wheel Drive Only (Ramcharger).	P = Forward Control Chassis.	M = Motor Home.
MEDIUM-HEAVY CODES:	XNT = Low Cab Forward.	D = Conventional Cab.	S = School Bus. W = 4-Wheel Drive.

AR=Use as Required

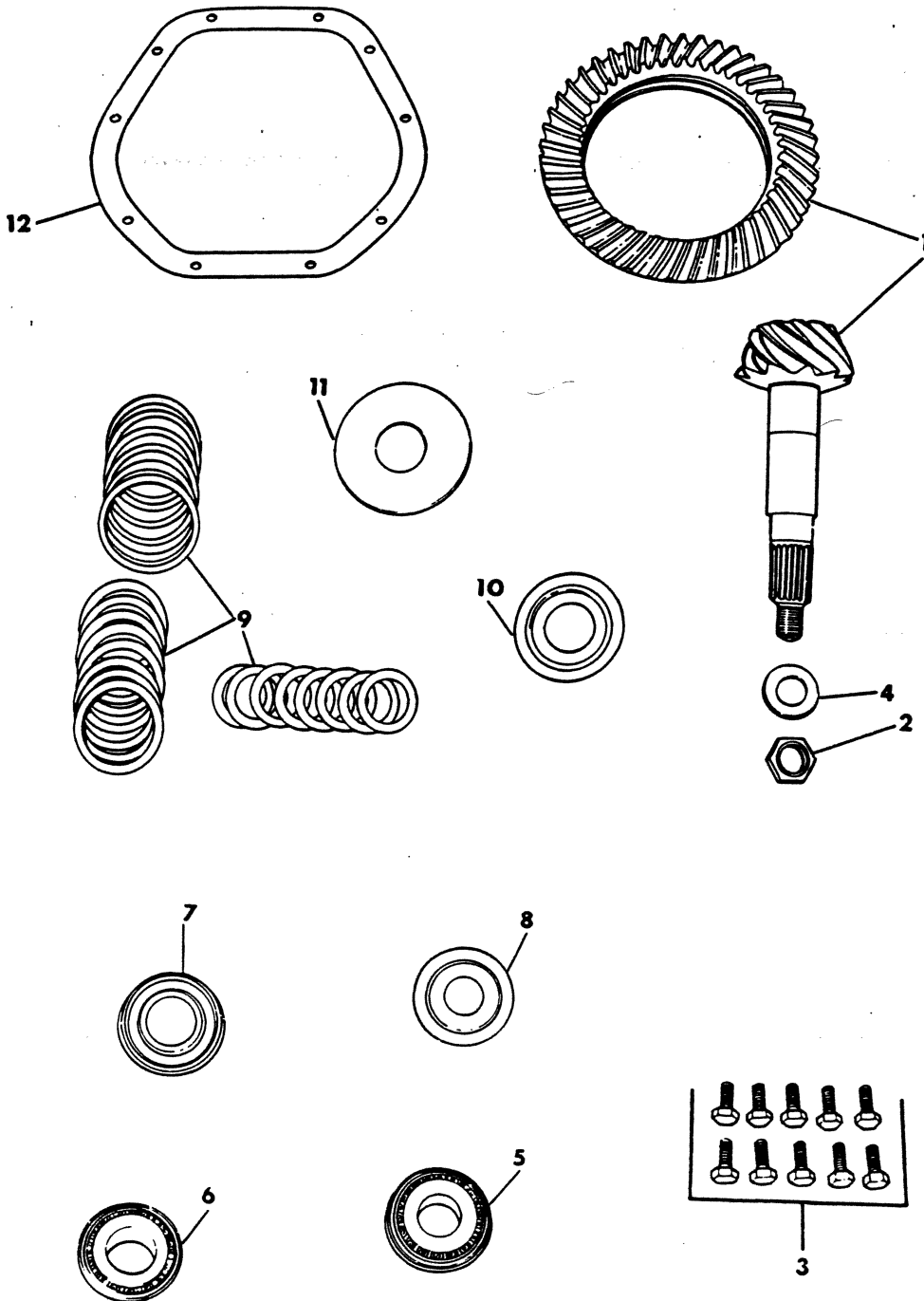
= New Part Number

Printed in U.S.A.

June, 1982

8302 950A

GEAR & PINION KIT
Spicer 60-4500 LB.
W2-3-4



ITEM	PART NUMBER	QTY	MODEL	DESCRIPTION
------	-------------	-----	-------	-------------

GEAR & PINION KIT
Spicer 60-4500 LB.
W2-3-4

DRIVE GEAR & PINION KIT

	3894 117	1	W2-3-4	4.10 ratio
	3894 118	1	W2-3-4	4.88 ratio
	4210 619	1	W3-4	4.56 ratio-1980-81

Gear & Pinion Kit**consists of:**

1				1----- Gear & Pinion
2				1-1795173 Nut, pinion
3				12-1795170 SCREW, drive gear
4				1-1795175 WASHER, pinion nut
5				1----- BEARING, drive pinion-rear
6				1----- BEARING, drive pinion-front
7				1-2961188 SEAL, pinion bearing
8				1-1795193 SLINGER, pinion bearing
9				1----- SHIM KIT, drive pinion-see note 1
10				1-3893982 SLINGER, pinion bearing-inner
11				1-3732949 BAFFLE, pinion bearing
12				1-3634985 GASKET, carrier cover

NOTE: 1-Pinion Shim Kit Consists Of:

1795 185	AR	SHIM-.003-Front Drive Pinion Bearing
1795 186	AR	SHIM-.005-Front Drive Pinion Bearing
1922 314	AR	SHIM-.003-Rear Drive Pinion Bearing
1922 315	AR	SHIM-.005-Rear Drive Pinion Bearing

LIGHT A = All Sport Utility (Ramcharger). B = All Compact Models. D = Conventional Cab.
DUTY AD = 2 Wheel Drive Only (Ramcharger). CB-MB = Compact Front Section Only. W = Conventional Cab 4 Wheel Drive.
CODES: AW = 4 Wheel Drive Only (Ramcharger). P = Forward Control Chassis. M = Motor Home.

MEDIUM-HEAVY CODES: XNT = Low Cab Forward. D = Conventional Cab. S = School Bus. W = 4-Wheel Drive.

AR=Use as Required

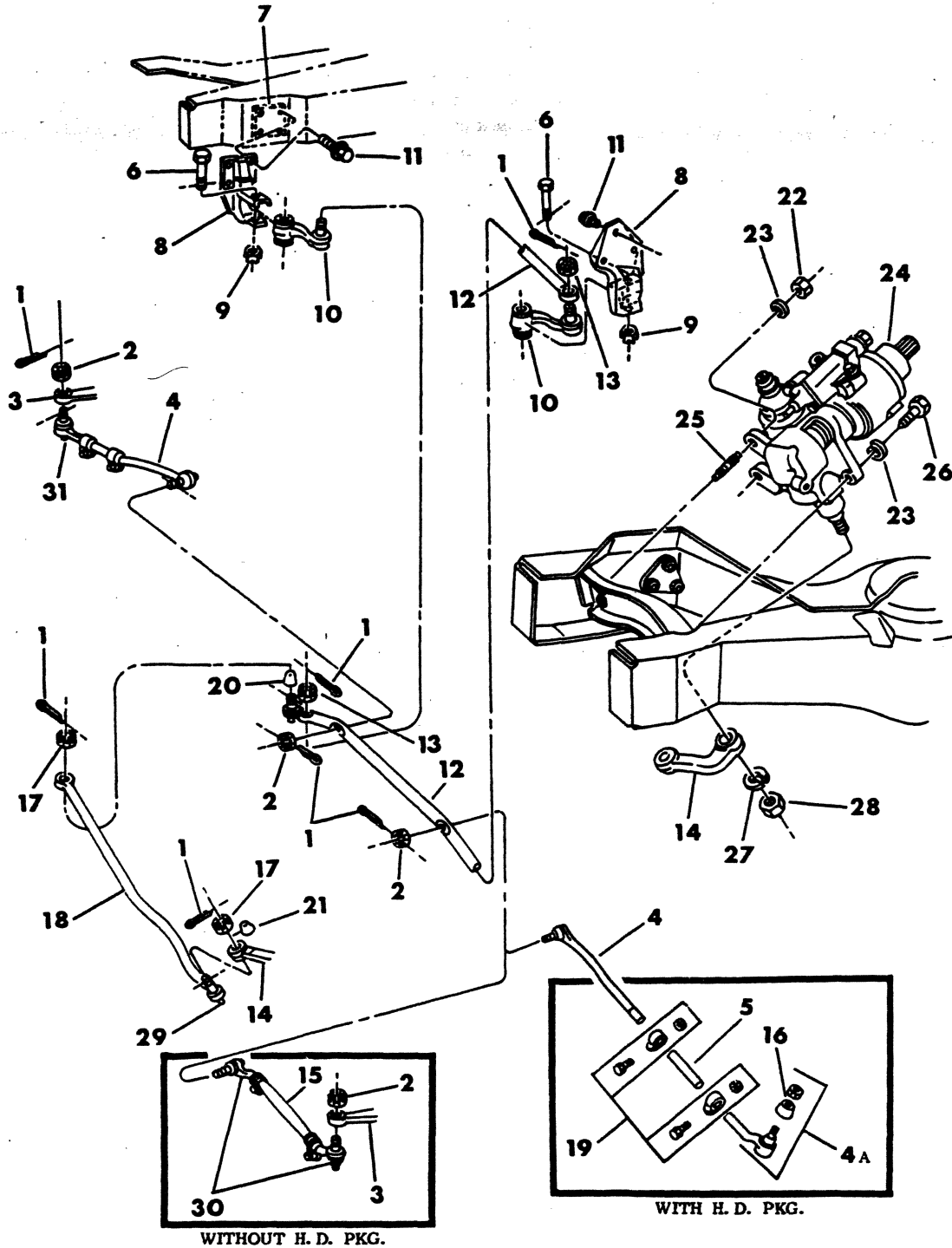
= New Part Number

Printed in U.S.A.

June, 1982

GEAR & LINKAGE, STEERING CB, MB, B1-2-3, 1978

8302 1100D



ITEM	PART NUMBER	QTY	MODEL	DESCRIPTION
GEAR & LINKAGE,STEERING				
CB,MB,B1-2-3,1978				
1		AR		PIN
2	1263 946	AR		NUT-5/8-18-With H.D. Pkg.
	128 178	AR		NUT-9/16-18-Without H.D. Pkg.
3	3733 190-1	1	B3	ARM,Strg. Knuckle,w/H.D. Pkg.,1725 Lb Spring
	3634 920-1	1	B3	ARM,Strg. Knuckle-Without H.D. Pkg.& 1725 Lb. Spring
	3634 920-1	1	B1-2	ARM,Steering Knuckle
4	3744 944	1		END PACKAGE,Tie Rod-Inner-Right-With H.D. Pkg.
4	3744 945	1		END PACKAGE,Tie Rod-Inner Left-With H.D. Pkg.
4A	3744 942	2		END PACKAGE,Tie Rod-Outer-With H.D. Pkg.
5	3491 696-7	1	B1-2-3-CB3	TUBE,w/Clamp,Strg. Knuckle Tie Rod
	3735 346-7	1	B3	w/H.D.Pkg.,4000 Lb. Axle
	3491 696-7	1	B1-2-3	With Clamp-Without H.D.Pkg.
6	3004 805	2		BOLT,Idler Arm
7				PLATE,Idler Bracket Mounting
8	4031 286	1		BRACKET,Idler Arm-Right
	3732 607	1		Left
9	6030 448	AR		NUT-9/16-12
10	2960 253	2		ARM,Steering Idler
11	6029 746	AR		SCREW and WASHER-3/8-16 x 1.50
12	3579 504	1	B1-2	LINK PACKAGE,Center
	3579 504	1	B3	w/3300 Lb. Front Axle
	3579 504	1	CB3	w/109,127" W.B.
	3579 504	1	MB3	Without H.D Package
	3733 187	1	B3	LINK,Center-With 4000 Lb.Axle
	3733 187	1	CB3	w/145" W.B.
13	9425 132	AR		BOLT-1/2-20
14	2960 288	1		ARM,Power Steering Gear
	2960 251	1		ARM,Manual Steering Gear
15	3897 413	2		TUBE w/o CLAMP,Tie Rod,w/o H.D.Pkg.-15.15"Lg.
16	3897 412	AR		SEAL,Tie Rod End
17	9424 798	4		NUT,Tie Rod Ball-9/16-18
18	3491 690	1		LINK,Drag
19	4031 288	AR	ALL	CLAMP ASSY.Tie Rod Tube-without H.D.Pkg.
				Consists Of:
				1-9422727 Bolt
				1-0152342 Nut
				1----- Clamp
20	3492 143	AR		COVER,Center Link Ball
21	3492 143	AR		COVER,Drag Link Ball Dust
22	219 467	AR		NUT
23	6028 762	3		WASHER,Manual Steering Gear To Frame
23	6028 087	3		WASHER,Power Steering
24				GEAR,Manual Steering-Refer To Figure 19-1300
24				GEAR,Power Steering-Refer To Figure 19-1300
25	6030 443	AR		STUD
26	6028 193	2		SCREW,Steering Gear To Frame
27	6028 088	1		WASHER,Steering Gear Arm
28	6029 964	1		NUT,Steering Gear Arm
29	6030 099	2		NIPPLE,Grease

LIGHT A = All Sport Utility (Ramcharger). B = All Compact Models. D = Conventional Cab.
DUTY AD = 2 Wheel Drive Only (Ramcharger). CB-MB = Compact Front Section Only. W = Conventional Cab 4 Wheel Drive.
CODES: AW = 4 Wheel Drive Only (Ramcharger). P = Forward Control Chassis. M = Motor Home.

MEDIUM-HEAVY CODES: XNT = Low Cab Forward. D = Conventional Cab. S = School Bus. W = 4-Wheel Drive.

AR=Use as Required

=New Part Number

Printed in U.S.A.

June, 1982

1978-81 LIGHT DUTY TRUCK PARTS CATALOG

FRONT SUSPENSION

ITEM	PART NUMBER	QTY	MODEL	DESCRIPTION
------	-------------	-----	-------	-------------

GEAR & LINKAGE,STEERING
CB,MB,B1-2-3,1978

30	3879 946	2		END PACKAGE,Tie Rod-R.H.Thd.-Without H.D. Pkg.
30	3879 947	2		END PACKAGE,Tie Rod-L.H.Thd.-Without H.D. Pkg.
NOTE: The Following Parts Are Not Illustrated.				
	2835 895	2	ALL	SEAL,Steering Idler Arm Socket
—	9424 798	AR		NUT,Drag Link Ball-9/16-18

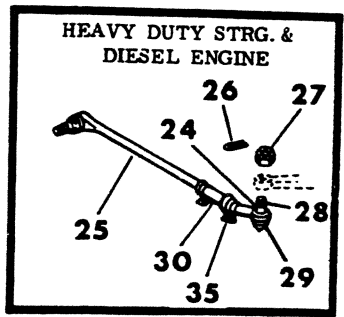
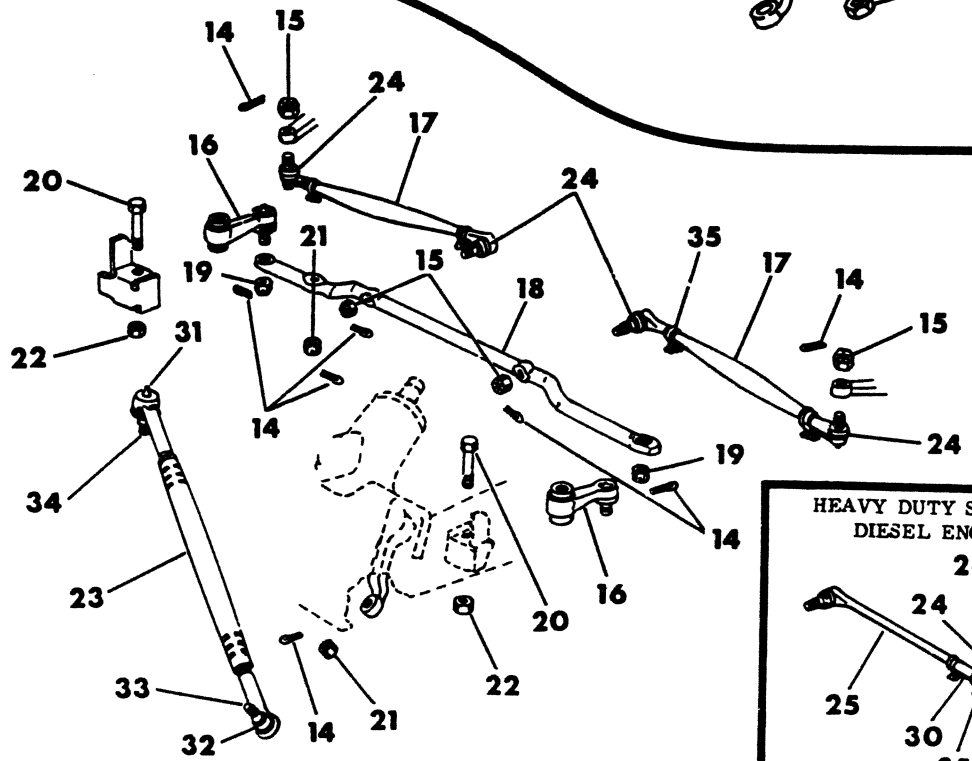
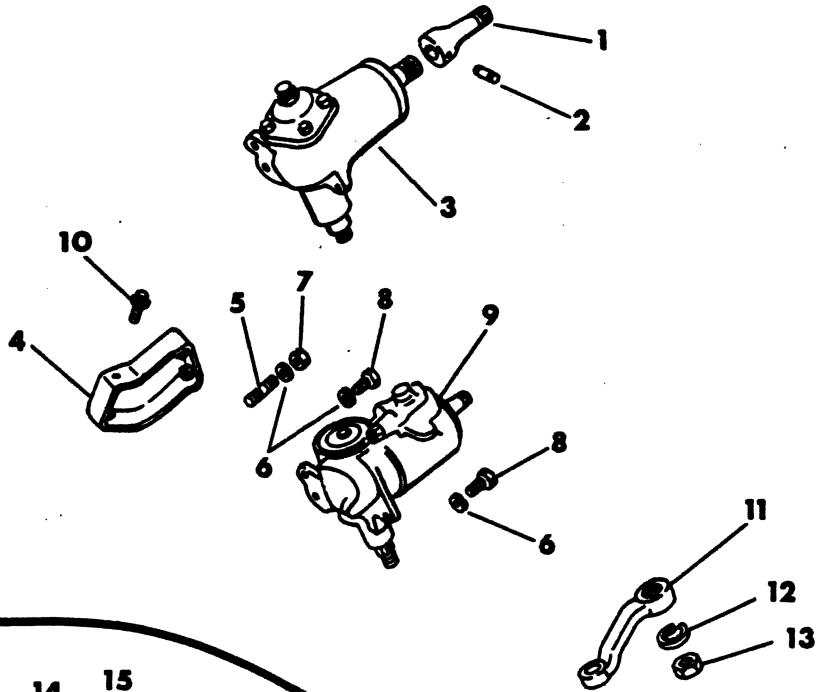
LIGHT	A = All Sport Utility (Ramcharger).	B = All Compact Models.	D = Conventional Cab.
DUTY	AD = 2 Wheel Drive Only (Ramcharger).	CB-MB = Compact Front Section Only.	W = Conventional Cab 4 Wheel Drive.
CODES:	AW = 4 Wheel Drive Only (Ramcharger).	P = Forward Control Chassis.	M = Motor Home.

MEDIUM-HEAVY CODES: XNT = Low Cab Forward. D = Conventional Cab. S = School Bus. W = 4-Wheel Drive.

AR=Use as Required # =New Part Number Printed in U.S.A. June, 1982

8302 1150A

GEAR & LINKAGE, STEERING
CB, MB, B1-2-3, 1979-80-81



ITEM	PART NUMBER	QTY	MODEL	DESCRIPTION
GEAR & LINKAGE,STEERING				
CB,MB,B1-2-3,1979-80-81				
1	4037 651	1		EXTENSION,Manual Steering Gear
2	6028 750	1		PIN,Extension Spring
3				GEAR,Manual Steering-Refer To Figure 19-1300
4	4037 177	1		SUPPORT,Steering Gear Mounting Bracket
4				REINFORCEMENT,s/gear mtg.-serviced in underbody side rail
5	6031 165	AR		STUD,Strg.Gear To Bracket-Up To Approx.5-1-79
5	6031 757	AR		STUD,Strg.Gear To Bracket-After Approx.5-1-79
5	6031 757	1		STUD,Steering Gear To Bracket-1980
6	6028 087	AR		WASHER,Lock
7	219 467	AR		NUT,Strg.Gear To Bracket Stud-Up To Approx.5-1-79
7	6031 758	AR		NUT,Strg.Gear To Bracket Stud-After Approx.5-1-79
8	6031 659	2		SCREW,Steering Gear Mounting-Up TO Approx.2-15-79
8	6031 669	2		SCREW,Steering gear Mounting-After Approx.2-15-79
9				GEAR,Power Steering-Refer To Figure 19-1300
10	9416 171	AR		BOLT
11	4089 350	1		ARM,Steering Gear
12	6028 088	1		WASHER,Steering Gear Arm
13	6029 964	1		NUT,Steering Gear Arm
14				PIN
15	1263 946	4		NUT,Tie Rod End-Outer-With 4000 Lb. Axle
16	4088 946	2		ARM,Steering Idler
17	4089 385	2		TUBE ASSY.,Tie Rod-With 3300,3600 Lb.Axle
18	4089 398	1		LINK,Center-With 3300,3600 Lb.Axle
18A	4089 399	1		LINK,Center-With 4000 Lb.Axle
19	9425 132	2		NUT,Idler Arm Stud
20	3004 805	2		BOLT,Idler Arm
21	9424 798	AR		NUT,Steering Linkage Tie Rod Ball
22	6030 448	2		NUT,Idler Arm Bolt
23	4037 718	1		LINK with ENDS,drag-without diesel eng.-up to approx.10-1-80
23	4237 963	1		LINK with ENDS,drag-without diesel eng.-after approx.10-1-80
23	4089 338	1		LINK,Drag-With Diesel Eng.
24	4131 302	1		END PACKAGE,Tie Rod-R.H.Thd.-W/3300,3600 Lb.Axle
24	4131 303	1		END PACKAGE,Tie Rod-L.H.Thd.-W/3300,3600 Lb. Axle
25	4186 008	1		END PACKAGE,Tie Rod-Inner Right-With 4000 Lb. Axle
25	4186 009	1		END PACKAGE,Tie Rod-Inner Left-With 4000 Lb. Axle
26				PIN-Not Serviced
27	1263 946	4		NUT,Tie Rod End
28	4186 007	2		END PACKAGE,Tie Rod-Outer-With 4000 Lb. Axle
29	3897 412	4		SEAL,Tie Rod End Dust-W/3300,3600 Lb. Axle-1979-80
29	4116 441	2		SEAL,Tie Rod End Dust-With 4000 Lb. Axle-1979-80
29	3897 412	4		SEAL,Tie Rod End Dust-W/3300,3600,4000 lb. axle-1981
29	4116 441	2		SEAL,Tie Rod End assy.-w/4000 lb. axle-1981
30	4112 842-3	1		TUBE ASSY.,Tie Rod-With 4000 Lb. Axle
31	6030 099	AR		NIPPLE,Grease
32	3897 412	2		SEAL,Drag Link End Stud
33	4131 302	1		END PACKAGE,Drag Link-R.H.Thd.-up to approx.10-1-80
34	4131 303	1		END PACKAGE,Drag Link-L.H.Thd.-up to approx.10-1-80
35	4031 288	1		CLAMP PACKAGE,Tie Rod Tube
Consists Of:				

LIGHT	A = All Sport Utility (Ramcharger).	B = All Compact Models.	D = Conventional Cab.
DUTY	AD = 2 Wheel Drive Only (Ramcharger).	CB-MB = Compact Front Section Only.	W = Conventional Cab 4 Wheel Drive.
CODES:	AW = 4 Wheel Drive Only (Ramcharger).	P = Forward Control Chassis.	M = Motor Home.

MEDIUM-HEAVY CODES: XNT = Low Cab Forward. D = Conventional Cab. S = School Bus. W = 4-Wheel Drive.

AR=Use as Required

=New Part Number

Printed in U.S.A.

June, 1982

1978-81 LIGHT DUTY TRUCK PARTS CATALOG

FRONT SUSPENSION

ITEM	PART NUMBER	QTY	MODEL	DESCRIPTION
------	-------------	-----	-------	-------------

GEAR & LINKAGE,STEERING
CB,MB,B1-2-3,1979-80-81

1-9422727 Bolt
 1-0152342 NUT
 1----- CLAMP

NOTE: The Following Parts Are Not Illustrated.

2835 895

2

SEAL Steering Idler Arm Socket

LIGHT A = All Sport Utility (Ramcharger). B = All Compact Models. D = Conventional Cab.
DUTY AD = 2 Wheel Drive Only (Ramcharger). CB-MB = Compact Front Section Only. W = Conventional Cab 4 Wheel Drive.
CODES: AW = 4 Wheel Drive Only (Ramcharger). P = Forward Control Chassis. M = Motor Home.

MEDIUM-HEAVY CODES: XNT = Low Cab Forward. D = Conventional Cab. S = School Bus. W = 4-Wheel Drive.

AR=Use as Required

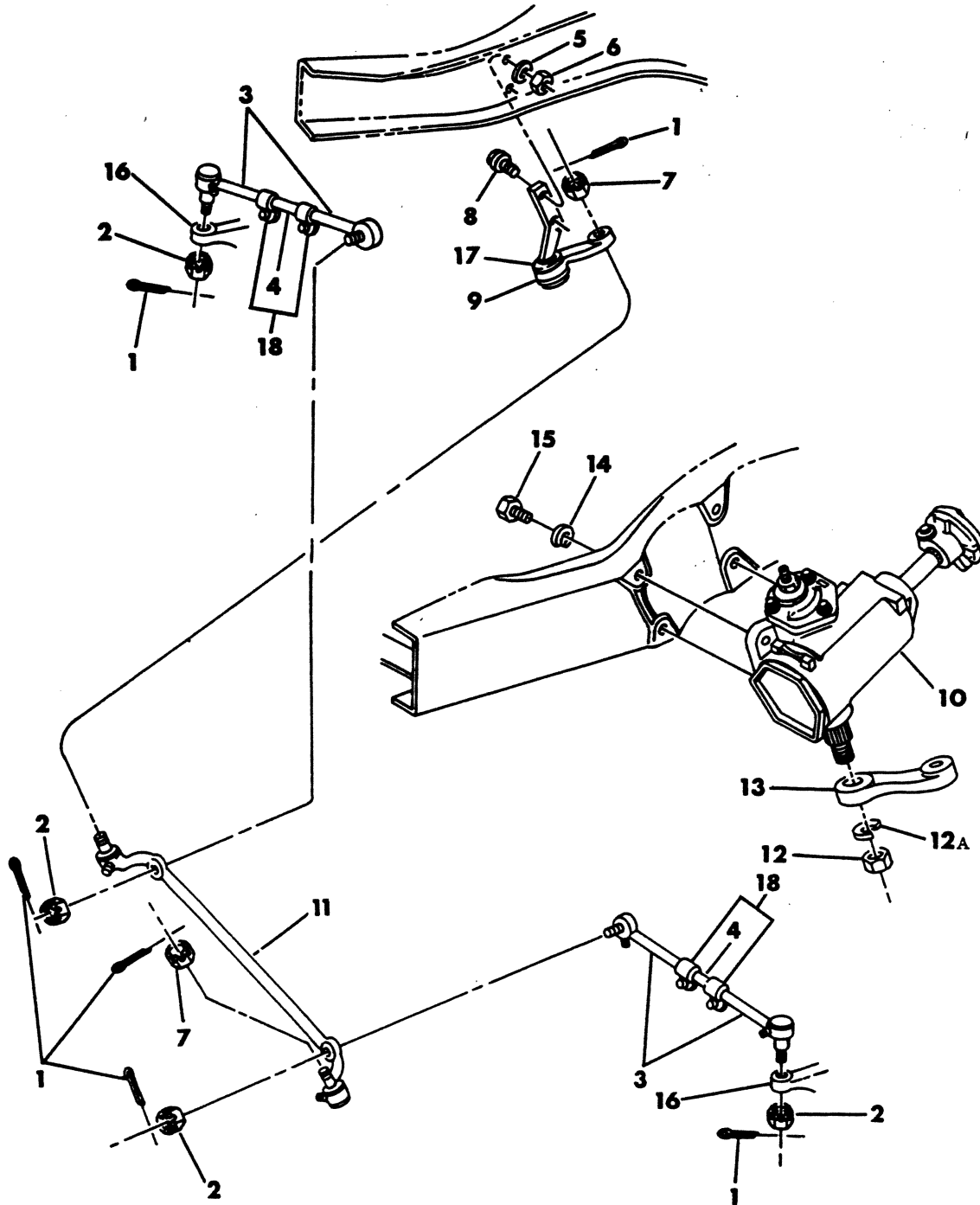
= New Part Number

Printed in U.S.A.

June, 1982

GEAR & LINKAGE, STEERING
AD1, D1-2-3-4

3302 1200D



ITEM	PART NUMBER	QTY	MODEL	DESCRIPTION
GEAR & LINKAGE,STEERING AD1,D1-2-3-4				
1		AR		PIN
2	9424 798	4		NUT,Tie Rod Ball-1/2-20-With 3300,3600 Lb. Axle
2		AR	D3	NUT-9/16-18
3	3497 702	2	AD1,D1	END Pkg.,Tie Rod ,Right Hand Thread-11/16-18-1978
	3497 703	2	AD1,D1	Left Hand Thread-11/16-18-1978
	3492 964	2	D2	R.H.Thd.-3/4-16 w/H.D.Pkg.-131,149" W.B.-1978
	3492 965	2	D2	L.H.Thd.-3/4-16 w/H.D.Pkg.-131,149" W.B.-1978
	3497 702	2	D2	R.H.Thd.-11/16-18 Except H.D.Pkg.-131,149" W.B.-1978
	3497 703	2	D2	L.H.Thd.-11/16-18 Except H.D.Pkg.-131,149" W.B.-1978
	3492 964	2	D2	R.H.Thd.-3/4-16,165" W.B.-1978
	3492 965	2	D2	L.H.Thd.-3/4-16,165" W.B.-1978
	3492 964	2	D3-4	R.H.Thd.-3/4-16-1978
	3492 965	2	D3-4	L.H.Thd.-3/4-16-1978
	4131 302	1		END PACKAGE,Tie R.H.Thread-3000,3300,4000 Lb. Axle-1979-80-81
	4131 303	1		END PACKAGE,tie rod-l.h.thread-3000,3300,4000 lb.-1979-80-81
4	3497 704	2	AD1-D1	ROD w/CLAMP,Strg. Knuckle Tie-3000 Lb. Axle-1978
	3492 966	2	D2	131,149" W.B.,w/ H.D.Pkg.-1978
	3497 704	2	D2	131,149" W.B.,w/o H.D.Pkg.-1978
	3492 966	2	D2	165" W.B.-1978
	3492 966	2	D3-4	All W.B.-1978
	4031 743	2		TUBE,Strg.Linkage Tie Rod-With 3000,3300,3600 Lb. Axle-1979-80-81
5	6023 188	2	AD1,D1-2-3	WASHER,Coned
6	152 346	2	AD1,D1-2-3	NUT,Lock-7/16-14
7		2	AD1,D1-2-3	NUT,Center Link-9/16-18
8	9418 275	2	AD1,D1-2-3	BOLT,Idler Arm Bracket
9	3496 507	1		ARM and BRACKET,Idler
10				GEAR,Saginaw Power Steering-Refer To Figure 19-1300
10				GEAR,Saginaw Manual Steering-Refer To Figure 19-1300
11	3497 546	1	AD1,D1	LINK,Center-1978
11	3492 134	1	D2	LINK,Center-131,149" W.B.,With H.D. Pkg.-1978
11	3497 546	1	D2	LINK,Center-131,149" W.B.,Without H.D.Pkg.-1978
11	3492 134	1	D2-3-4	LINK,Center-All W.B.-1978
11	3492 134	1		LINK,Center-1979-80-81
12	3491 339	1		NUT,steering gear arm
12A	3633 423	1		WASHER,steering gear arm
13	3492 214	1		ARM,Power Steering Gear
13	3492 213	1		ARM,Manual Steering Gear
14		AR		WASHER,Steering Gear To Frame
15	6030 269	AR		SCREW,Steering Gear To Frame
16				ARM,Steering Knuckle-Refer To Figure 17-055
17	3496 506	1		COVER,Strg.Idler Arm Dust
18	4031 288	1		CLAMP PACKAGE,tie rod tube consists of: 1----- clamp 1-9422727 bolt 1-0152342 nut

LIGHT A = All Sport Utility (Ramcharger).
DUTY AD = 2 Wheel Drive Only (Ramcharger).
CODES: AW = 4 Wheel Drive Only (Ramcharger).

B = All Compact Models.
 CB-MB = Compact Front Section Only.
 P = Forward Control Chassis.

D = Conventional Cab.
 W = Conventional Cab 4 Wheel Drive.
 M = Motor Home.

MEDIUM-HEAVY CODES: XNT = Low Cab Forward. D = Conventional Cab. S = School Bus. W = 4-Wheel Drive.

AR=Use as Required

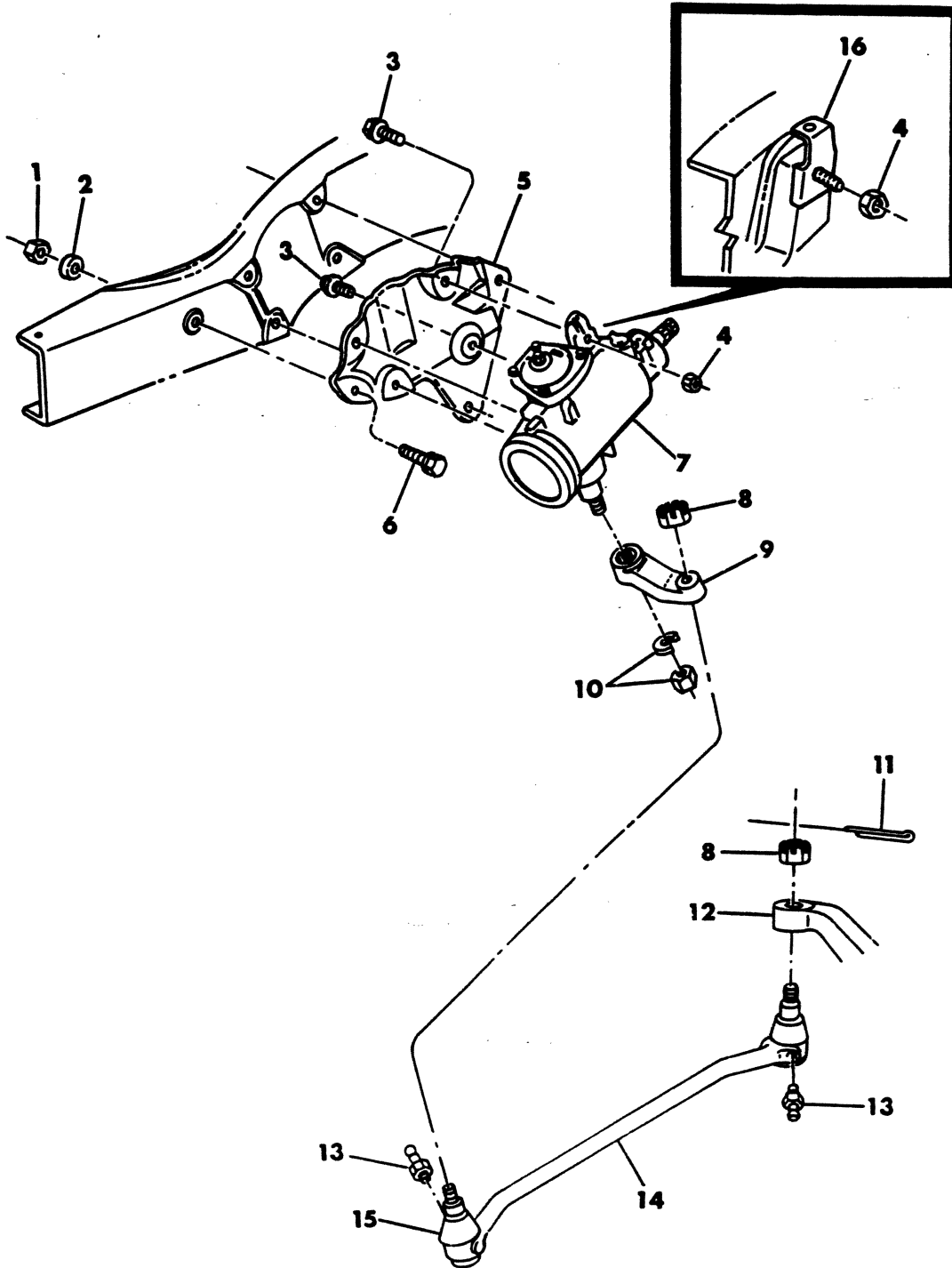
=New Part Number

Printed in U.S.A.

June, 1982

8302 1300A

GEAR & LINKAGE, STEERING
RD2,AW1,W1-2-3-4



ITEM	PART NUMBER	QTY	MODEL	DESCRIPTION
GEAR & LINKAGE,STEERING				
RD2,AW1,W1-2-3-4				
1	152 348	3		NUT,Gear Bracket To Frame
2	123 174	AR		WASHER, Lock
3	6030 475	1	W-AW	SCREW,Bracket To Steering Gear (7/16-14 x 1.62)
	6031 585	3	W-AW	SCREW,Bracket To Steering Gear (7/16-14 x 1.25)
	6030 475	4	RD2	SCREW,Bracket To Steering Gear (7/16-14 x 1.62)
4	152 348	3		NUT, (7/16-14)
5	4088 041	1		BRACKET,Steering Gear To Frame
6	6031 586	3		BOLT,Steering Gear Bracket To Frame
7				GEAR-Manual Steering-Refer To Figure 19-2400
7				GEAR-Power Steering-Refer To Figure 19-2100
8	1263 946	2		NUT,Drag Link Ball
9	4088 044	1	AW-W	ARM,Manual Steering Gear
9	4088 045	1	AW-W	ARM,Power Steering Gear
9	4089 063	1	RD2	ARM,Power Steering Gear
10	3491 339	1		NUT,steering gear arm
10	3633 423	1		WASHER,steering gear arm
11				PIN-Not Serviced
12			AW1-W1	KNUCKLE,Steering-Refer To Figure 2-100
12			W2-RD2	KNUCKLE,Steering-3500 LB. Axle-Refer To Figure 2-200
12			W2-3-4	KNUCKLE,Steering-4500 LB. Axle-Refer To Figure 2-300
13	9411 022	2		FITTING,Grease
14	4106 178	1		LINK PACKAGE,drag
				consists of:
				1—— LINK,drag
				2—— PIN,cotter
				2—— NIPPLE,grease
15	2960 055	1		COVER-Serviced In Item 14
18	4167 293	1		BRACKET

NOTE:tie rod end packages are shown on front axle illustrations.

NOTE: The Following Packages Are Not Illustrated.

			 Tie Rod End Packages-are shown on front axle illustration
	3633 913	1		ARM,steering knuckle-4500 Lb. Axle
	3736 094	2	W2-3-4	CLAMP PACKAGE-Tie Rod End-4500 Lb. Axle
	4031 963	1	AW1-W1-2	Tube without CLAMP-3500 Lb. Axle
	3633 916	1	W2-3-4	Tube With End-4500 Lb. Axle-45 5/8" Long
	1263 946	AR	W2-3-4	NUT,Tie Rod End-5/8-18
	3633 423	1		WASHER,steering gear arm

LIGHT	A = All Sport Utility (Ramcharger).	B = All Compact Models.	D = Conventional Cab.
DUTY	AD = 2 Wheel Drive Only (Ramcharger).	CB-MB = Compact Front Section Only.	W = Conventional Cab 4 Wheel Drive.
CODES:	AW = 4 Wheel Drive Only (Ramcharger).	P = Forward Control Chassis.	M = Motor Home.

MEDIUM-HEAVY CODES: XNT = Low Cab Forward. D = Conventional Cab. S = School Bus. W = 4-Wheel Drive.

AR=Use as Required

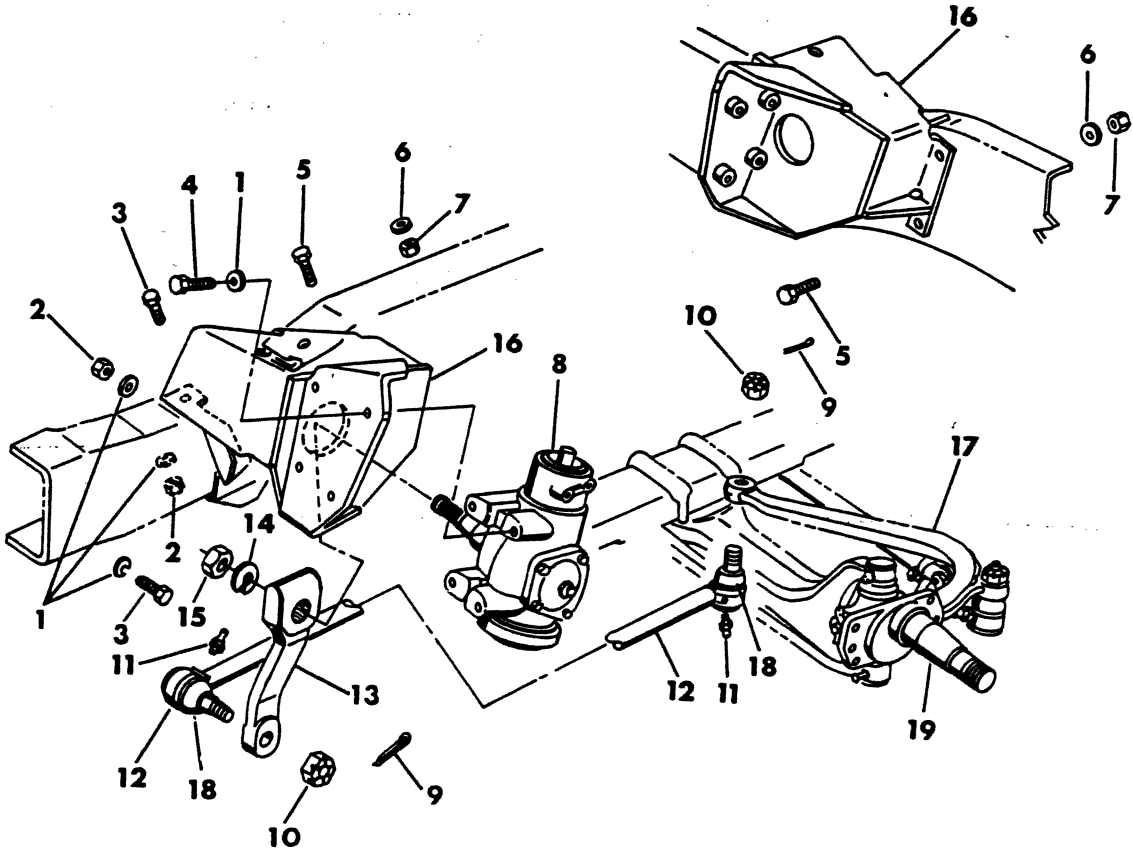
= New Part Number

Printed in U.S.A.

June, 1982

8302 1325

GEAR & LINKAGE, POWER STEERING M3-4-5



ITEM	PART NUMBER	QTY	MODEL	DESCRIPTION
GEAR & LINKAGE, POWER STEERING				
M3-4-5				
1	6025 705	AR		WASHER
2	271 507	2		NUT
3	6029 720	2		BOLT, steering gear bracket front
4	6030 270	AR		SCREW, strg. gear to bracket
5	6029 723	3		BOLT, strg. gear bracket rear
6	6028 762	AR		WASHER
7	115 731	AR		NUT
8				GEAR, steering-refer to figure 19-1800
9				PIN-not serviced
10	1263 946	2		NUT, drag link ball-1979-80
11	9411 022	AR		NIPPLE
12	4026 505	1		LINK, drag-1978
12	4131 309	1		LINK, drag-1979-80
13	3638 419	1		ARM, steering gear-1978
13	4089 717	1		ARM, steering gear-1979-80
14				WASHER-serviced on gear assy.
15				NUT-refer to figure 19-2200
16	3827 882	1		BRACKER, steering gear
17				ARM-refer to figure 2-2200
18	4115 717	2		COVER, drag link ball dust -1979-80
19				KNUCKLE, steering-refer to figure 2-1500

LIGHT	A = All Sport Utility (Ramcharger).	B = All Compact Models.	D = Conventional Cab.
DUTY	AD = 2 Wheel Drive Only (Ramcharger).	CB-MB = Compact Front Section Only.	W = Conventional Cab 4 Wheel Drive.
CODES:	AW = 4 Wheel Drive Only (Ramcharger).	P = Forward Control Chassis.	M = Motor Home.

MEDIUM-HEAVY CODES: XNT = Low Cab Forward. D = Conventional Cab. S = School Bus. W = 4-Wheel Drive.

AR=Use as Required

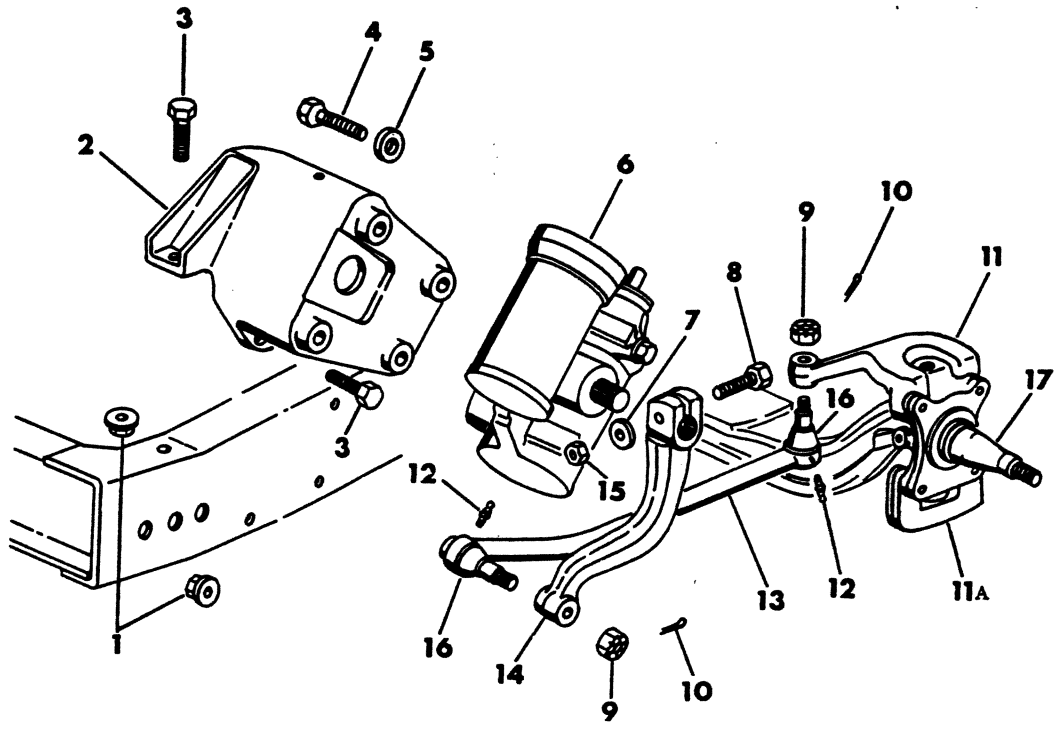
= New Part Number

Printed in U.S.A.

June, 1982

8302 1350

GEAR & LINKAGE, POWER STEERING
M600



ITEM	PART NUMBER	QTY	MODEL	DESCRIPTION
GEAR & LINKAGE, POWER STEERING				
M600				
1	6025 022	4		NUT & WASHER,s/gear mounting bracket to frame
2	4031 296	1		BRACKET,steering gear
3	9418 507	4		BOLT,s/gear mounting bracket to frame
4	6031 114	4		SCREW,gear to bracket-1978
4	6500 304	4		SCREW,gear to bracket-metric-1979-80
5	6028 776	4		WASHER,gear to bracket
6				GEAR,steering-refer to figure 19-1800
7				WASHER-not serviced
8	271 887	1		BOLT,steering gear arm
9	1263 946	2		NUT,drag link ball-1979-80
10				PIN-not serviced
11				ARM,drag link-refer to figure 2-1450 or 2-1475
11A				ARM,tie rod-refer to figure 2-1450 or 2-1475
12A	9411 027	AR		NIPPLE,grease
13	4026 841	1		LINK,drag-1978
13	4131 308	1		LINK,drag-1979-80
14	4032 124	1		ARM,steering gear
15	219 469	1		NUT,steering gear arm bolt
16	4115 717	2		COVER,drag link ball dust-1979-80
17				KNUCKLE,steering-refer to figure 2-1500

LIGHT	A = All Sport Utility (Ramcharger).	B = All Compact Models.	D = Conventional Cab.
DUTY	AD = 2 Wheel Drive Only (Ramcharger).	CB-MB = Compact Front Section Only.	W = Conventional Cab 4 Wheel Drive.
CODES:	AW = 4 Wheel Drive Only (Ramcharger).	P = Forward Control Chassis.	M = Motor Home.

MEDIUM-HEAVY CODES: XNT = Low Cab Forward. D = Conventional Cab. S = School Bus. W = 4-Wheel Drive.

AR=Use as Required

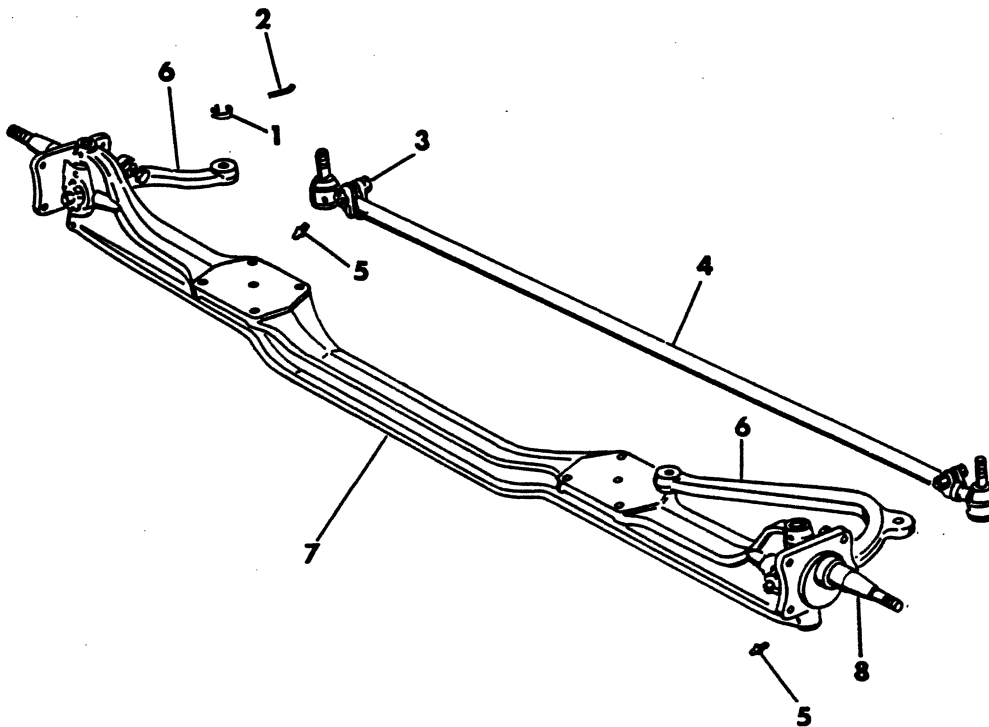
=New Part Number

Printed in U.S.A.

June, 1982

AXLE, FRONT
M3-4-5, 1978

8302 1425A



ITEM	PART NUMBER	QTY	MODEL	DESCRIPTION
AXLE,FRONT				
M3-4-5,1978				
1	9424 798	AR		NUT-4500 Lb. Axle
	1263 946	2		NUT-5000 Lb. Axle
2				PIN-Not Serviced
3				BOLT,Serviced In Tie Rod Package
4				TUBE,Tie Rod-Refer To Figure 2-1500
5	9411 022	AR		Fitting,Grease
6				ARM,Steering Knuckle Tie Rod
	1394 146	1	M3	RIGHT
	1926 118	1	M4-5	RIGHT
	4030 618	1	M3	LEFT
	3735 344	1	M4-5	LEFT
7				I-BEAM,Front Axle
7	3640 310	1	M3	4500 LB.Axle
7	1932 167	1	M4-5	5000 LB.Axle
8				KNUCKLE,steering-refer to figure 2-1500
NOTE: The Following Parts Are Not Illustrated				
			M3-4-5-6	PACKAGE,Tie Rod End-Refer To Figure 2-1500
	1194 863	2	M4-5	CLAMP,Tie Rod End

LIGHT	A = All Sport Utility (Ramcharger).	B = All Compact Models.	D = Conventional Cab.
DUTY	AD = 2 Wheel Drive Only (Ramcharger).	CB-MB = Compact Front Section Only.	W = Conventional Cab 4 Wheel Drive.
CODES:	AW = 4 Wheel Drive Only (Ramcharger).	P = Forward Control Chassis.	M = Motor Home.

MEDIUM-HEAVY CODES: XNT = Low Cab Forward. D = Conventional Cab. S = School Bus. W = 4-Wheel Drive.

AR=Use as Required

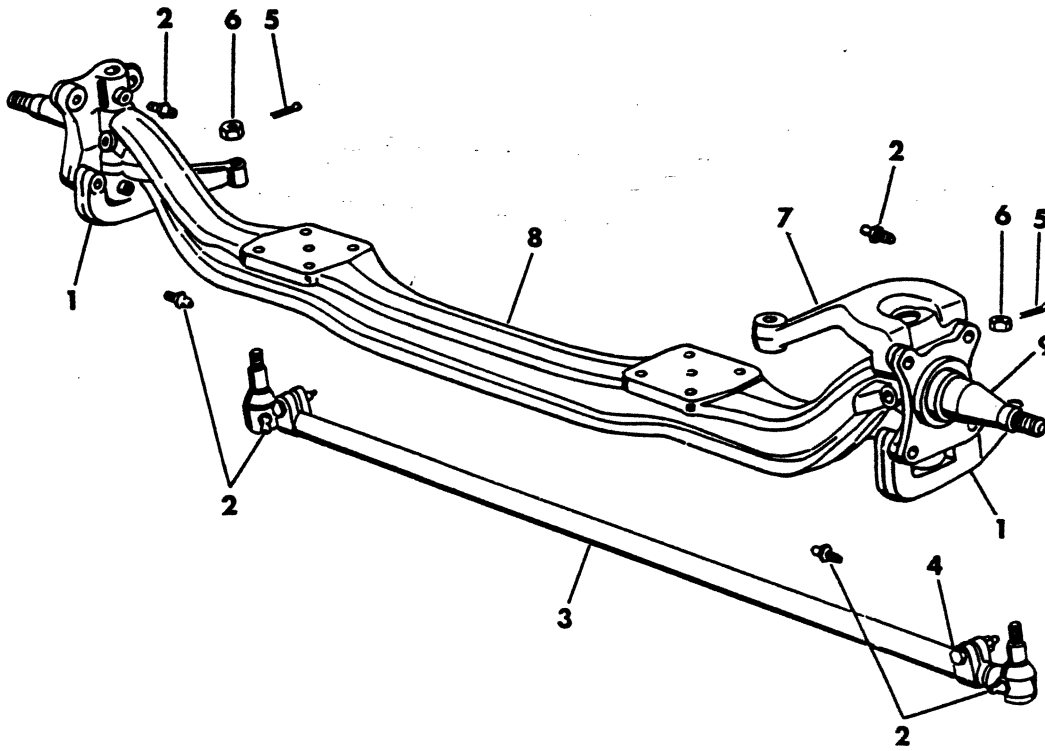
=New Part Number

Printed in U.S.A.

June, 1982

AXLE,FRONT
M6,1978

8302 1450A



ITEM	PART NUMBER	QTY	MODEL	DESCRIPTION
AXLE,FRONT				
M6,1978				
1	3732 202	1		ARM,Steering Knuckle Tie Rod-Right
1	3732 203	1		ARM,Steering Knuckle Tie Rod-Left
2	9411 022	AR		Fitting,Grease
3				TUBE,Tie Rod-Refer To Figure 2-1500
4				BOLT-Serviced In Tie Rod Package
5				PIN-Not Serviced
6	1263 946	2		NUT,Tie Rod End Ball
7	4117 631	1		ARM,Drag Link-Left
8	3641 528	1		I-BEAM-6000 Lb.
9				KNUCKLE,steering-refer to figure 2-1500

LIGHT	A = All Sport Utility (Ramcharger).	B = All Compact Models.	D = Conventional Cab.
DUTY	AD = 2 Wheel Drive Only (Ramcharger).	CB-MB = Compact Front Section Only.	W = Conventional Cab 4 Wheel Drive.
CODES:	AW = 4 Wheel Drive Only (Ramcharger).	P = Forward Control Chassis.	M = Motor Home.

MEDIUM-HEAVY CODES: XNT = Low Cab Forward. D = Conventional Cab. S = School Bus. W = 4-Wheel Drive.

AR=Use as Required

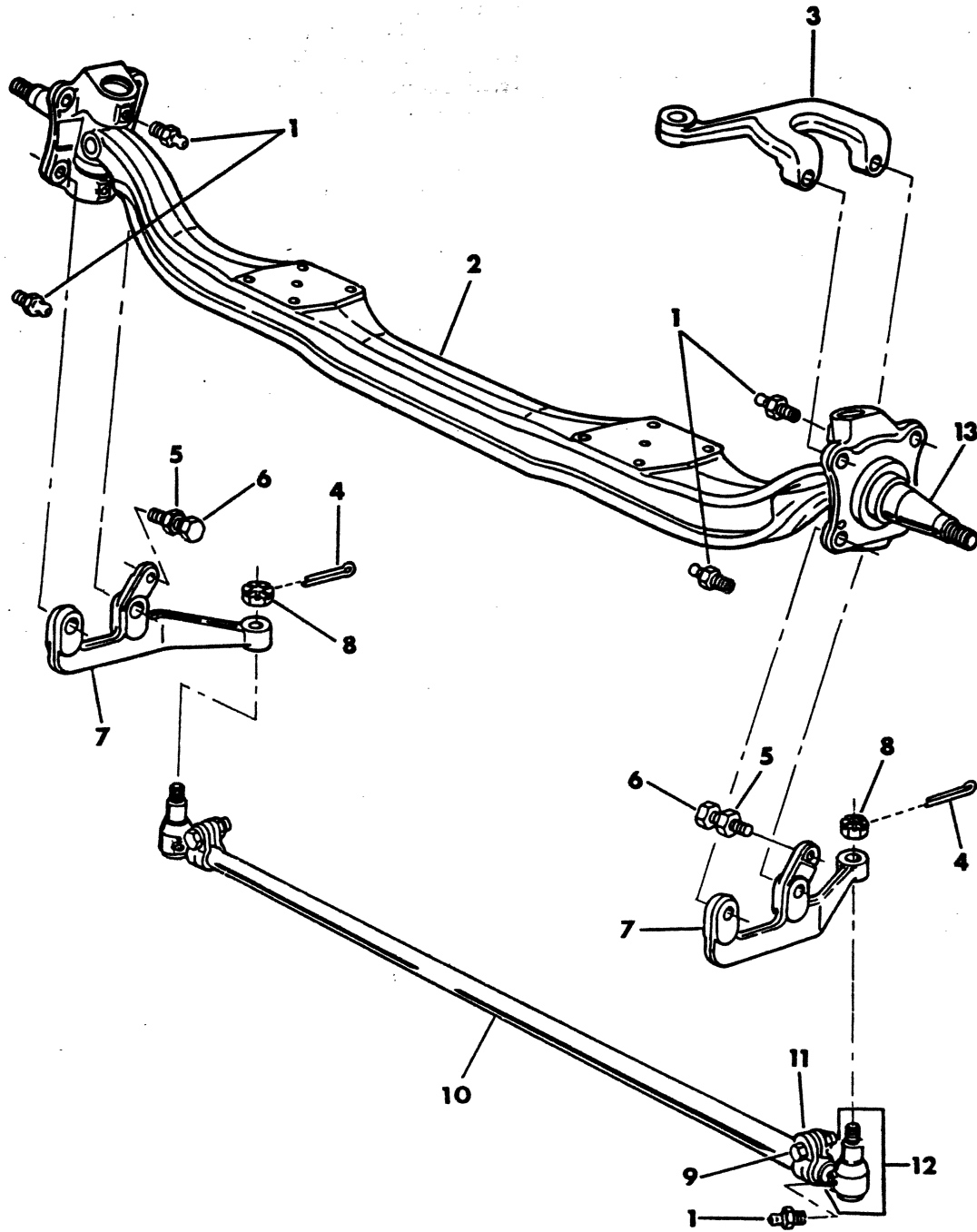
= New Part Number

Printed in U.S.A.

June, 1982

AXLE,FRONT
M3-4-5-6
1979-80

302 1475C



ITEM	PART NUMBER	QTY	MODEL	DESCRIPTION
AXLE,FRONT				
M3-4-5-6				
1979-80				
1	9411 022	AR		NIPPLE,grease
2	4089 701	1	M3-4-5	I-BEAM,front axle-4500,5000 lb. axle
2	4115 453	1	M6	I-BEAM,front axle-6000 lb.-1979
2	3641 528	1	M6	I-BEAM,front axle-6000 lb. axle-1980
3	4117 631	1	ALL	ARM,drag link-left 1979-80
4				PIN,cotter
5	271 502	2		NUT,Lock-7/16-14
6	6030 323	2		SCREW,Knuckle Arm Stop-7/16-14 X 1.75
7	4089 706-7	1	M3-4-5	ARM,tie rod-1979-80
7	3732 202-3	1	M6	ARM,steering knuckle tie rod-1979-80
8		2		NUT,Tie Rod Stud
9				BOLT & NUT,Tie Rod Clamp
10	4131 315	1		TUBE,Tie Rod
11	3736 079	2	ALL	CLAMP ASSY.,tie rod-1979-80
12				END ASSY.,tie rod-refer to figure 2-1500
13				KNUCKLE,steering-refer to figure 2-1500

LIGHT	A = All Sport Utility (Ramcharger).	B = All Compact Models.	D = Conventional Cab.
DUTY	AD = 2 Wheel Drive Only (Ramcharger).	CB-MB = Compact Front Section Only.	W = Conventional Cab 4 Wheel Drive.
CODES:	AW = 4 Wheel Drive Only (Ramcharger).	P = Forward Control Chassis.	M = Motor Home.

MEDIUM-HEAVY CODES: XNT = Low Cab Forward. D = Conventional Cab. S = School Bus. W = 4-Wheel Drive.

AR=Use as Required

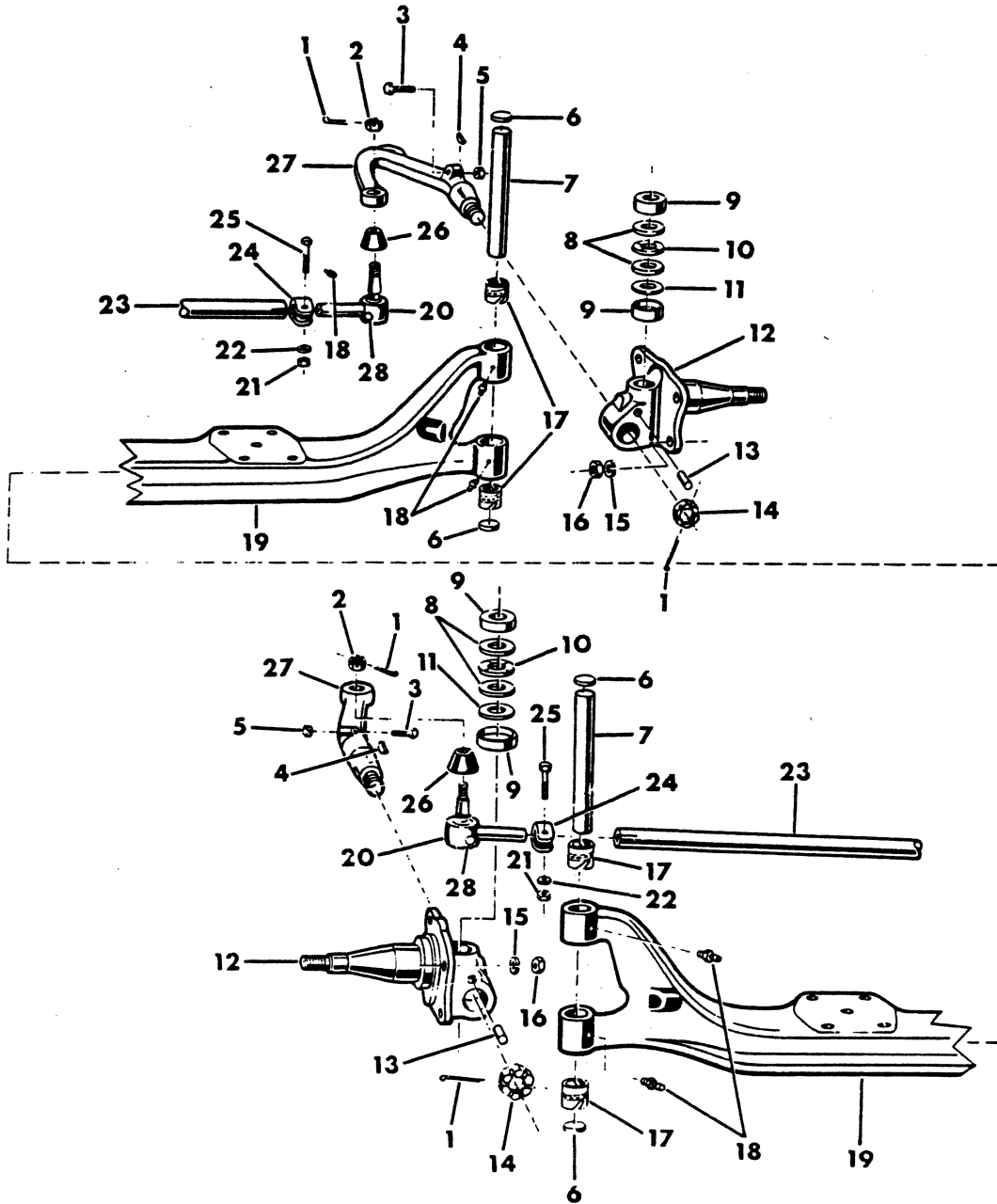
= New Part Number

Printed in U.S.A.

June, 1982

AXLE COMPONENTS, FRONT M3-4-5-6

8302 1500A



ITEM	PART NUMBER	QTY	MODEL	DESCRIPTION
AXLE COMPONENTS,FRONT				
M3-4-5-6				
1	137 254	AR	ALL	PIN,Cotter
2	9424 798	2	M3	NUT,Tie Rod End Ball-1978
2	1263 946	2	M4-5-6	NUT,Tie Rod End Ball-1978
2	1263 946	2	M3-4-5-6	NUT,tie rod end ball-1979-80
3	6030 557	2	M3-4-5	SCREW,Knuckle Arm Stop-1978
3	6030 323	2	M6	SCREW,Knuckle Arm Stop-1978
3	6030 323	2	ALL	SCREW,Knuckle arm stop-1979-80
4	120 051	2	M3	KEY,Knuckle or Tie Rod Arm
4	178 879	2	M4-5	
5	271 501	2	ALL	NUT,Stop Screw
6	106 517	4	M3	PLUG,Strg.Knuckle Pivot Oil Seal-1978
6	117 923	4	M4-5	PLUG,Strg.Knuckle Pivot Oil Seal-1978
6	103 896	4	M6	PLUG,Strg.Knuckle Pivot Oil Seal-1978
6	103 896	4	ALL	PLUG,strg.knuckle pivot oil seal-1979-80
7	2275 522	2	M3	KING PIN PACKAGE-1978
7	4026 848	2	M4-5	1978
7	3780 538	2	M6	1978
7	3780 538	2	ALL	1979-80
8	1666 251	4	M3	WASHER,Knuckle Thrust-4500 Lb. Axle
8	4030 446	2	M4-5	WASHER,Knuckle Thrust-5000 Lb. Axle
9	1666 250	2	M3	CUP,Knuckle Thrust Bearing-Upper
9	1666 454	2	M4-5	Upper
9	1666 253	2	M3	Lower
9	1666 457	2	M4-5	Lower
10			All	BEARING,Strg.Knuckle Thrust-In Item 7
11	594 805	AR	M3	SHIM,Strg.Knuckle Thrust-Thick
11	595 617	AR	M4-5	Thick
11	595 616	AR	M4-5	Thin
11	2514 616	AR		.005
11	2514 617	AR		.010
11	571 005	AR		.016
11	1923 858	AR		.024
12	3638 546-7	1	M3	KNUCKLE,Steering-4500 Lb. Axle-1978
12	3640 136-7	1	M4	KNUCKLE,Steering-5000 Lb. Axle-1978
12	1790 502-3	1	M5	KNUCKLE,Steering-5000 Lb. Axle-1978
12	3733 188	2	M6	KNUCKLE,Steering-1978
12	4117 637	2		KNUCKLE,steering-1979-80
13			ALL	LOCK PIN-Serviced In Item 7
14	1506 149	2	ALL	NUT,Strg. Knuckle Arm
15	6028 762	2	M6	LOCKWASHER,Strg. Knuckle Pivot Pin
16	118 617	2	M6	NUT,Strg. Knuckle Pivot Pin
17	3736 917	4	M3	BUSHING,I-Beam-1978
17	3736 918	4	M4-5	BUSHING,I-Beam-1978
17	1789 523	4	M6	BUSHING,S/Knuckle-Also In 3780538 Pkg.,Item 7-1978
17	1789 523	4	M3-4-5-6	BUSHING,S/Knuckle-Also In 3780538 Pkg.-Item 7-1979-80
18	9411 022	4	M3-4-5	NIPPLE,Pivot Pin Grease
19			M3-4-5	I-BEAM-Refer To Figure 2-1425
19			M6	I-BEAM-Refer To Figure 2-1450
20	1879 443	1	M3	END PACKAGE,Tie Rod-R.H.Thd.-1978

LIGHT A = All Sport Utility (Ramcharger).

B = All Compact Models.

D = Conventional Cab.

DUTY AD = 2 Wheel Drive Only (Ramcharger).

CB-MB = Compact Front Section Only.

W = Conventional Cab 4 Wheel Drive.

CODES: AW = 4 Wheel Drive Only (Ramcharger).

P = Forward Control Chassis.

M = Motor Home.

MEDIUM-HEAVY CODES: XNT = Low Cab Forward. D = Conventional Cab. S = School Bus. W = 4-Wheel Drive.

AR=Use as Required

=New Part Number

Printed in U.S.A.

June, 1982

1978-81 LIGHT DUTY TRUCK PARTS CATALOG

FRONT SUSPENSION

ITEM	PART NUMBER	QTY	MODEL	DESCRIPTION
AXLE COMPONENTS,FRONT				
M3-4-5-6				
	1311 175	1	M3	END PACKAGE,Tie Rod-L.H.Thread-1978
	1238 395	1	M4-5	END PACKAGE,Tie Rod-R.H. Thd.-1978
	1238 394	1	M4-5	END PACKAGE,Tie Rod-L.H. Thd.-1978
20	4131 318	1	M6	END PACKAGE,Tie Rod-R.H. Thd.-1978
20	4131 319	1	M6	END PACKAGE,Tie Rod-L.H.Thd.-1978
20	4131 318	1	M3-4-5-6	END PACKAGE,tie rod-r.h.thd.-1979-80
20	4131 319	1	M3-4-5-6	END PACKAGE,tie rod-l.h.thd.-1979-80
21		AR		NUT
22		AR		LOCKWASHER
23	2914 389	1	M3	TUBE without CLAMP,Tie Rod-1978
23	1932 170	1	M4-5	TUBE WITHOUT CLAMP,Tie Rod-1978
23	3780 535	1	M6	TUBE WITHOUT CLAMP,Tie Rod-1978
23	4131 315	1	M3-4-5-6	TUBE,tie rod-1979-80
24	3736 079	2	M6	CLAMP-Also in 3838006-7 Pkg.,Item 20-1978
24				CLAMP-Refer To Figure 2-1475-1979-80
25		AR		BOLT
26	1261 187	2	M3	COVER,Tie Rod End Dust-1978
26	1194 871	2	M4-5	COVER,Tie Rod End Dust-1978
26	3736 087	2	M6	COVER,End Dust-Also in 3838006 Pkg.-Item 20-1978
26	4115 718	2	M3-4-5-6	COVER,tie rod end dust-1979-80
27				ARM,Strg. Knuckle Drag Link
27	1394 146	1	M3	RIGHT,4500 Lb. Axle-1978
27	4030 618	1	M3	LEFT,4500 Lb. Axle-1978
27	1926 118	1	M4-5	RIGHT,5000 Lb Axle-1978
27	3735 344	1	M4-5	LEFT,5000 Lb Axle-1978
27	4030 203	1	M6	5000,6000 Lb. Axle-1978
27				ARM,Tie Rod -Refer To Figure 2-1475-1979-80
27				ARM,Drag Link-Refer To Figure 2-1475-1979-80
28	9411 027	AR	M3	NIPPLE,Tie Rod End Grease
NOTE: The Following Parts Are Not Illustrated				
	4115 454	2	ALL	SEAL,Steering Knuckle Thrust Bearing
	4115 455	4	ALL	SEAL,Steering Knuckle Bushing

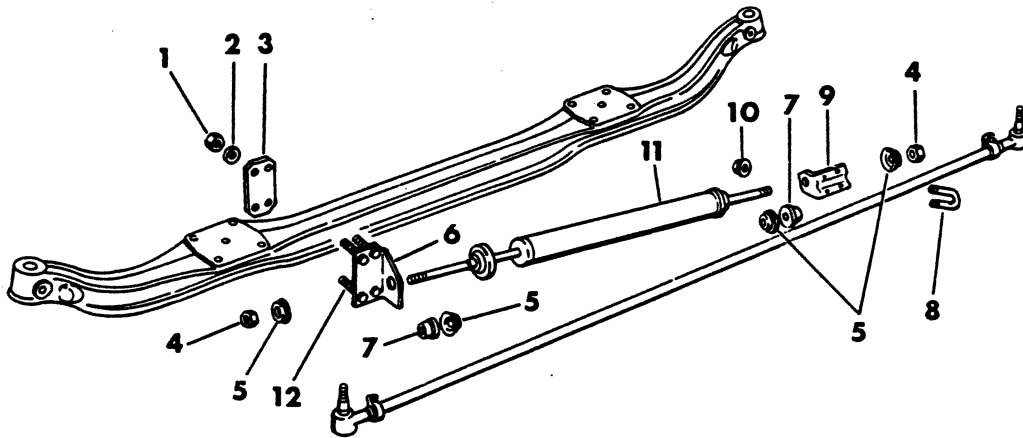
LIGHT A = All Sport Utility (Ramcharger). B = All Compact Models. D = Conventional Cab.
DUTY AD = 2 Wheel Drive Only (Ramcharger). CB-MB = Compact Front Section Only. W = Conventional Cab 4 Wheel Drive.
CODES: AW = 4 Wheel Drive Only (Ramcharger). P = Forward Control Chassis. M = Motor Home.

MEDIUM-HEAVY CODES: XNT = Low Cab Forward. D = Conventional Cab. S = School Bus. W = 4-Wheel Drive.

AR=Use as Required # =New Part Number Printed in U.S.A. June, 1982

8302 1600

STABILIZER OR DAMPER,STEERING
M3-4-5-6



ITEM	PART NUMBER	QTY	MODEL	DESCRIPTION
STABILIZER OR DAMPER, STEERING				
M3-4-5-6				
1	115 731	4		NUT, Mounting Bracket Bolt
2	6028 762	4		WASHER
3	4116 918	1		PLATE, Damper Mounting
4	114 942	2		LOCK-NUT, Retainer
5	2206 925	4		RETAINER, Damper
6	4116 925	1	M3-4-5	BRACKET ASSY., I-Beam Damper Mounting-1978
6	4116 915	1	M3-4-5	BRACKET ASSY., I-Beam Damper Mounting-1979
6	4116 915	1	M6	BRACKET ASSY., I-Beam Damper Mounting
7	2206 923	2		BUSHING, Damper
8		2		U-BOLT-Not Serviced
9	4116 914	1		BRACKET, Tie Rod Damper Mounting
10	6023 118	4		NUT & WASHER, U-Bolt
11	4116 920	1		SHOCK ABSORBER, Front Wheel Damper
12	4116 917	4		BOLT, Damper Mounting

NOTE: The Following Parts Are Not Illustrated.

4186 012	1	M3-4-5-6	DAMPER & PARTS PACKAGE, Front Wheel-1979 Consists Of Items 1 Thru 12
----------	---	----------	---

LIGHT	A = All Sport Utility (Ramcharger).	B = All Compact Models.	D = Conventional Cab.
DUTY	AD = 2 Wheel Drive Only (Ramcharger).	CB-MB = Compact Front Section Only.	W = Conventional Cab 4 Wheel Drive.
CODES:	AW = 4 Wheel Drive Only (Ramcharger).	P = Forward Control Chassis.	M = Motor Home.

MEDIUM-HEAVY CODES:	XNT = Low Cab Forward.	D = Conventional Cab.	S = School Bus.	W = 4-Wheel Drive.
----------------------------	------------------------	-----------------------	-----------------	--------------------

AR=Use as Required

= New Part Number

Printed in U.S.A.

June, 1982

