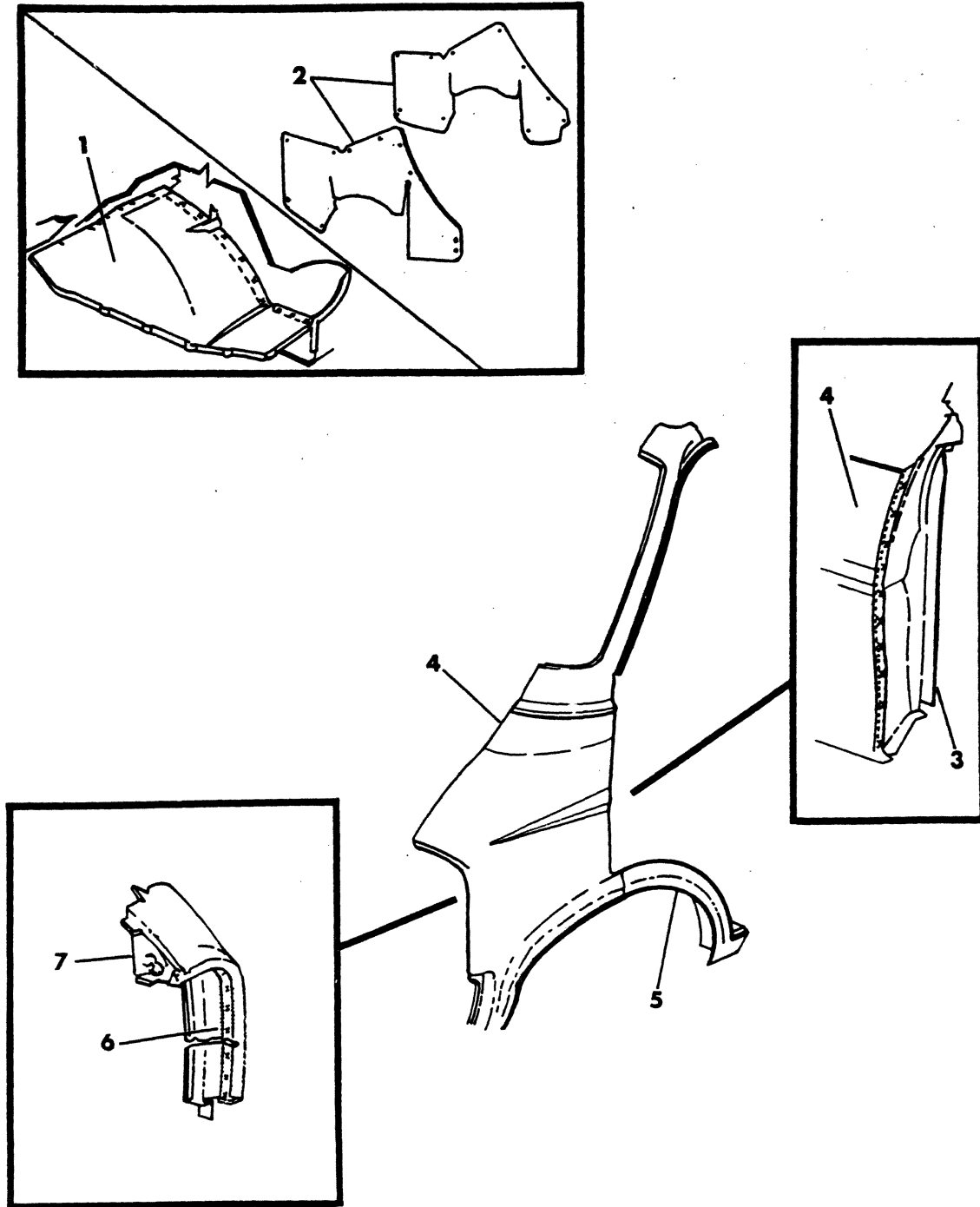


**GROUP 12 - FRONT FENDERS**

FENDER & RUNNING BOARD, REAR D-W100-200-300 ..... Fig. 12-300  
FENDER, FRONT B, CB, MB 1979-80-81 ..... Fig. 12-150  
FENDER, FRONT AD-AW, D-W1,2,3 ..... Fig. 12-200  
FENDER, FRONT - B, CB, MB - 1978 ..... Fig. 12-100

8312 100

FENDER, FRONT - B, CB, MB - 1978



ITEM	PART NUMBER	QTY	MODEL	DESCRIPTION
<b>FENDER, FRONT - B, CB, MB - 1978</b>				
1	2956 516-7	1		PANEL, Frt. Wheelhouse Splash Shield, Upper
	4083 487	1		Lower, w/Sound Pkg., Lt.
	3493 239	1		S/SHIELD, Frt. Wheelhouse, Rr. w/Sound Pkg.,Lt.(Not Shown)
	3493 999	1		BRACKET, Rr. Splash Shield To Dash, Left (Not Shown)
	4113 184	1		BRACKET, Rr. Splash Shield To U/Body, Left (Not Shown)
	2405 049	1		CLIP (Not Shown)
2	3493 238-9	1		EXTENSION, Front Wheelhouse, Rear
3	2956 136-7	1		EXTENSION, Frt. Fender Pnl. to Hinge Pillar, Lower
4	4083 352-3	1		PANEL, Front Fender, Front
5	4087 440-1	1		PANEL, Front Fender, Rear
6	2956 138-9	1		EXTENSION, Frt. Fender to Headlamp Panel
7	2956 810-1	1		FILLER, Frt. Fender to Headlamp

**LIGHT** A = All Sport Utility (Ramcharger). B = All Compact Models. D = Conventional Cab.  
**DUTY** AD = 2 Wheel Drive Only (Ramcharger). CB-MB = Compact Front Section Only. W = Conventional Cab 4 Wheel Drive.  
**CODES:** AW = 4 Wheel Drive Only (Ramcharger). P = Forward Control Chassis. M = Motor Home.

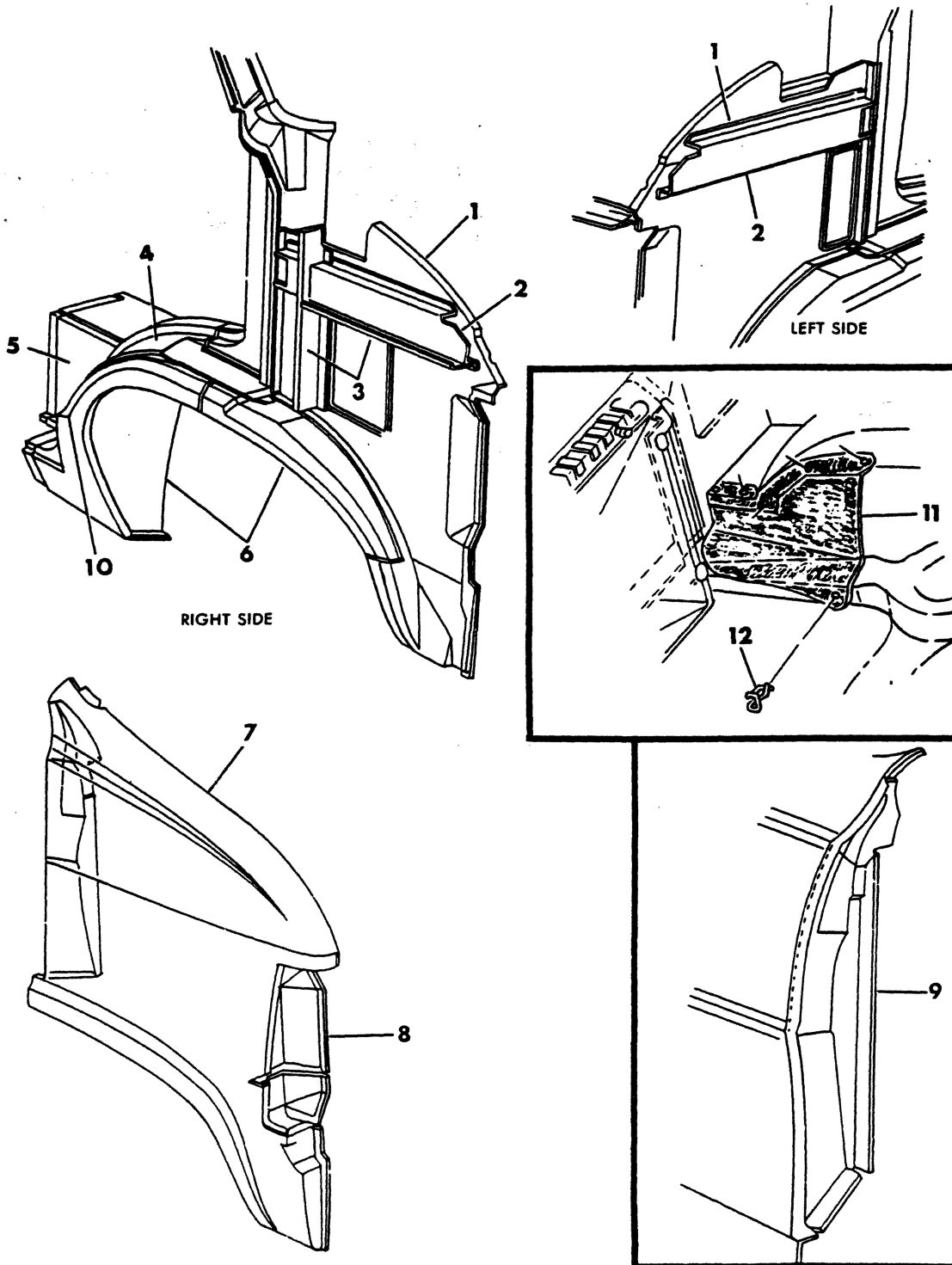
---

**MEDIUM-HEAVY CODES:** XNT = Low Cab Forward. D = Conventional Cab. S = School Bus. W = 4-Wheel Drive.

AR=Use as Required # =New Part Number Printed in U.S.A. June, 1982

8312 150A

FENDER, FRONT  
B, CB, MB  
1979-80-81



ITEM	PART NUMBER	QTY	MODEL	DESCRIPTION
<b>FENDER, FRONT</b>				
<b>B, CB, MB</b>				
<b>1979-80-81</b>				
1	4087 514	1		PANEL, Cowl Side, w/o Air Cond., Rt. Up TO 5-1-79
	4166 924	1		After 5-1-79
	4087 510	1		w/Air Cond., Rt. Up To 3-15-79
	4166 920	1		After 3-15-79
	4113 575	1		Left, Up To 4-19-79
	4166 921	1		After 4-19-79
2	4080 444-5	1		BEAM, Side Impact
3	4113 446	2		SHIELD, Cowl Side Water - Up To 11-23-78
	4113 921	2		After 11-23-78
4	4087 526-7	1		EXTENSION, w/House Inner Upper Rear - Up To 3-1-79
	4113 916-7	1		After 3-1-79
	4212 556-7	1		1981, After 9-11-80
5	2956 526	1		REINFORCEMENT, Side Stepsill, Right
	4084 913	1		Left
6	4087 522-3	1		PANEL, Side Front Splash Shield - Up To 10-6-78
	4113 914-5	1		After 10-6-78
7	4080 002-3	1		PANEL, Fender, Up To 1-10-79
	4166 916-7	1		After 1-10-79
8	4087 582-3	1		EXTENSION, Fndr. Pnl. To H/Lamp Support, 1979-80
	4211 980-1	1		1981
9	4087 518-9	1		EXTENSION, Fender Panel to Hinge Pillar
10	4080 006-7	1		PANEL, Fender Rear - Up To 3-1-79
	4113 910-1	1		After 3-1-79
	4211 982-3	1		1981, After 8-5-80
--	2405 049	8		CLIP, Frt. W/Hse. S/Sheild Attach.(Not Shown)
11	4113 900	1		S/SHIELD, Alternator, Right
12	6029 886	6		RETAINER, S/Shield

<b>LIGHT</b>	A = All Sport Utility (Ramcharger).	B = All Compact Models.	D = Conventional Cab.
<b>DUTY</b>	AD = 2 Wheel Drive Only (Ramcharger).	CB-MB = Compact Front Section Only.	W = Conventional Cab 4 Wheel Drive.
<b>CODES:</b>	AW = 4 Wheel Drive Only (Ramcharger).	P = Forward Control Chassis.	M = Motor Home.

**MEDIUM-HEAVY CODES:** XNT = Low Cab Forward. D = Conventional Cab. S = School Bus. W = 4-Wheel Drive.

AR=Use as Required

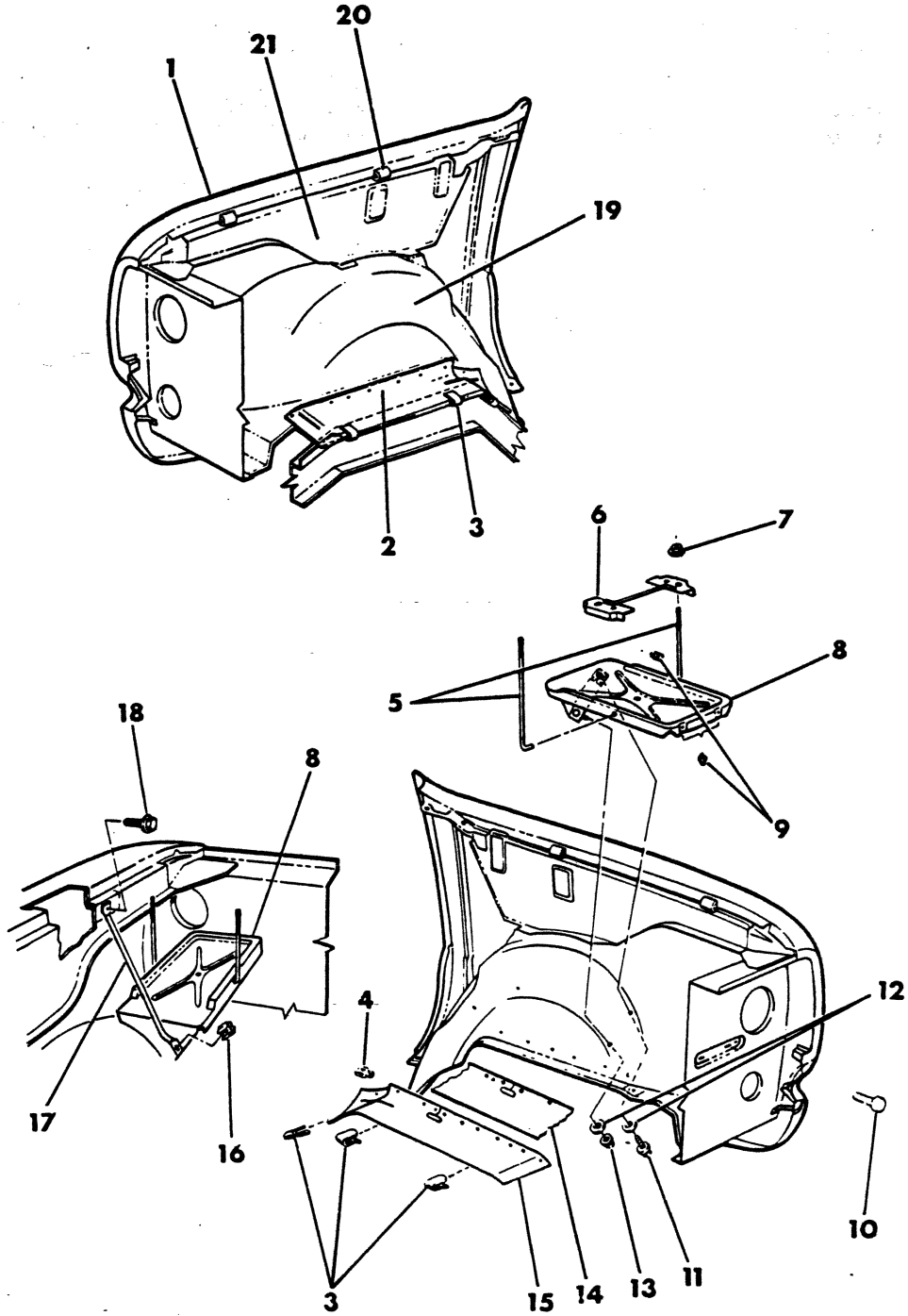
# = New Part Number

Printed in U.S.A.

June, 1982

8312 200

FENDER, FRONT  
AD-AW, D-W1,2,3



ITEM	PART NUMBER	QTY	MODEL	DESCRIPTION	
<b>FENDER, FRONT AD-AW, D-W1,2,3</b>					
1	4033 358-9	1		HOUSING, Frt. Fender, 1978-9	
	4215 510	1		Right - 1980	
	4033 359	1		Left - 1980	
	4215 532-3	1		PANEL ASSY., Frt. Fender Complete - 1981	
	3731 328-9	1		REINFORCEMENT, Fndr. Hsg. RR. Flange, Lower (Not Shown)	
	4215 608-9	1		REINFORCEMENT, Frt. Fender W/Opening To Upper Flange- 1981	
	4215 610-1	1		REINFORCEMENT, Frt. Fender Panel Frt. Flange, Lower -1981	
	4033 152-3	1		REINFORCEMENT, Fndr. Hsg. RR. Lwr. Reinf. to Whl. Opening Flange - 1978-79-80	
	4215 616-7	1		1981	
	2	4038 948	1		EXTENSION, Splash Shield, Right, 1978-9
		4166 370	1		1980, Up To 11-1-79
		4215 530	1		After 11-1-79
		4215 536	1		1981
	3	6003 351	AR		RETAINER, Frt. Fndr. Hsg. s/Shield Ext.
4	6029 886	AR		RETAINER , 1978-9	
4	6031 390	AR		1980	
5	6029 652	2		BOLT, Battery	
6	3906 801	1		STRAP, Battery	
7	219 462	2		NUT, w/Washer	
8	4087 422	1		TRAY, Battery, 1978-79-80	
	4211 597	1		1981	
9	152 454	3		U - NUT	
10	181 063	3		SCREW, w/Washer	
11	181 063	3		SCREW, w/Washer	
12		AR		WASHER (Do Not Service)	
13	219 462	3		NUT, w/Washer	
14	4087 375	1	AD,AW,D	EXTENSION, Splash Shield, Left, 1978-9	
	4166 371	1	AD,AW,D	1980, Up To 11-1-79	
	4215 531	1	AD,AW,D	After 11-1-79	
15	4087 269	1	W200	EXTENSION, Splash Shield, Left	
16	271 023	1		C/NUT	
17	3636 612	1		BRACE, Battery Tray	
18	6025 325	2		SCREW, w/Washer	
19	3731 972	1		SPLASH SHIELD, Right, 1978-9	
	4211 068	1		Right - 1980	
	4211 926	1		Right - 1981	
	4087 271	1		Left, 1978-9-0	
	4211 927	1		Left, 1981	
	3731 604-5	1		REINFORCEMENT, Frt. Fndr. Hsg. S/Shield Lower Frt.	
	20	2898 588	4		BUMPER, Fender to Hood
		3495 370	1		SUPPORT, (Serviced in Fender Hsg.)
21	4211 918	1		GUSSET, Frt. Fndr. Hsg. to Rad. Grl. Supt. Rt., 1978-79-80 (Not Shown)	
	4087 163	1		Right, 1981	
	4211 919	1		Left, 1978-79-80 Left, 1981	

LIGHT A = All Sport Utility (Ramcharger).

B = All Compact Models.

D = Conventional Cab.

DUTY AD = 2 Wheel Drive Only (Ramcharger).

CB-MB = Compact Front Section Only.

W = Conventional Cab 4 Wheel Drive.

CODES: AW = 4 Wheel Drive Only (Ramcharger).

P = Forward Control Chassis.

M = Motor Home.

MEDIUM-HEAVY CODES: XNT = Low Cab Forward. D = Conventional Cab. S = School Bus. W = 4-Wheel Drive.

AR=Use as Required

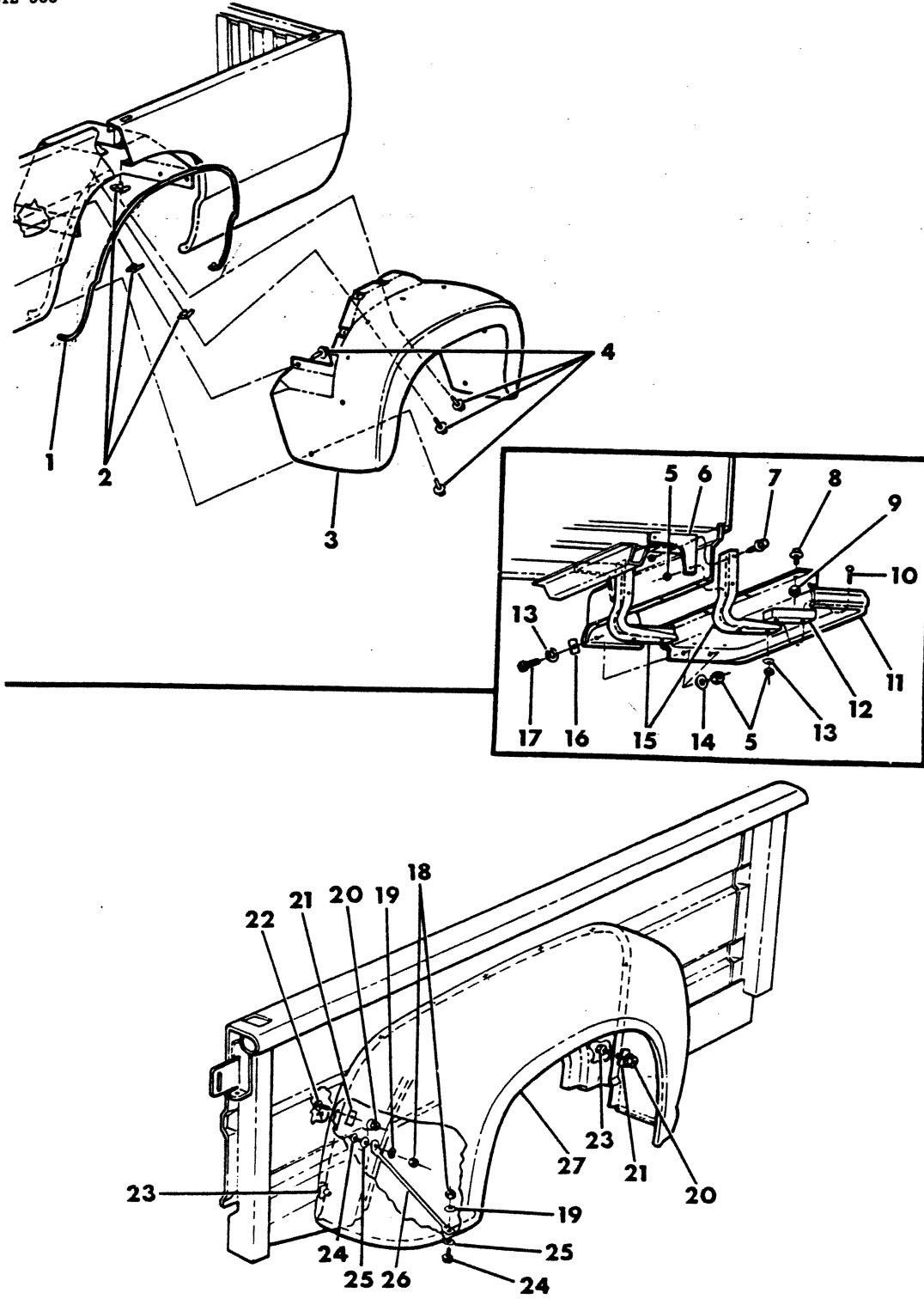
# = New Part Number

Printed in U.S.A.

June, 1982

FENDER & RUNNING BOARD, REAR  
D-W100-200-300

8312 300





ITEM	PART NUMBER	QTY	MODEL	DESCRIPTION
<b>FENDER &amp; RUNNING BOARD, REAR D-W100-260-300</b>				
1	3739 012	2		WELT, Rear Fender to Side Panel, Outer
2	152 454	38		U-NUT, Fender to Side Panel
3	3739 772-3	1	SWEPTLINE	FENDER, Rear, w/Dual Rear Wheels
4	181 063	38		BOLT, Fender to Side Panel,(1/4-20x3/4)
5	118 615	AR		NUT, Support Bolt, (3/8-16)
6	1781 546	AR		BRACE, Express Body Running Board Support
7	180 138	AR		SCREW, w/Washer
8	181 665	AR		SCREW, w/washer,running board to support
9	120 375	AR		NUT, Running Board to Support, (1/4-20)
10	6031 632	AR		BOLT, Running Board to Support, (3/8-16)
11	1781 525	1		RUNNING BOARD, ALL W/Base, Right - Up To 6-23-80
	4212 708	1		Right - After 6-23-80
	4211 660	1		Right - 1981
	2517 510	1		Left - Up To 6-23-80
	4212 709	1		Left - After 6-23-80
	4211 661	1		Left - 1981
	2503 144-5	1		131"W.B.Cab & 165"W.B.Crew Cab Utiline, Up To 8-2-80
	4212 802-3	1		After 8-2-80
	1781 537-8	1		135" W.B. Cab Utiline, 33" Long
	2980 213	1		115" W.B., Utiline Pickup, Chrome plated - Left
	2980 214	1		Right
	4087 173	1		SUPPORT ASSY, R/Board Stop
	4087 171	1		BRACKET, R/Board Supt., 1978-79-80
	4211 659	1		1981
12	1781 544	AR		SPACER, Running Board Support
13	6013 072	AR		LOCKWASHER, Support Bolt
14	120 394	4		WASHER, Plain, Running Board to Fender
15	1095 537	AR		SUPPORT,Running Board - 1978-79-80
	4262 044-5	1		1981
16	2221 103	4		SPACER, Running Board to Fender
17	181 112	4		BOLT, Fender to Running Board, (3/8-16)
18	118 614	4		NUT, Brace
19	6013 038	4		LOCKWASHER, Brace
20	118 614	18		NUT, w/Washer, Fender to Side Panel Screw
21	2221 103	18		SPACER, Fender to Side Panel
22	6022 282	14		SCREW, Fender to Side Panel, (5/16-18)
23	180 078	4		BOLT, Fender to Side Panel, (5/16-18)
24	181 086	4		SCREW, Brace, (5/16-18)
25	446 363	2		FLAT WASHER, brace
26	1780 718	2		BRACE, Rear Fender to Body
27	1396 730-1	1	UTILINE	FENDER, Rear, 1978-79-80
	4212 706-7	1	UTILINE	1981
	1398 694	AR	UTILINE	FILLER, Rear Fender to Body
	3739 278	2		SHIELD, Front Splash, Rubber

LIGHT A = All Sport Utility (Ramcharger).

B = All Compact Models.

D = Conventional Cab.

DUTY AD = 2 Wheel Drive Only (Ramcharger).

CB-MB = Compact Front Section Only.

W = Conventional Cab 4 Wheel Drive.

CODES: AW = 4 Wheel Drive Only (Ramcharger).

P = Forward Control Chassis.

M = Motor Home.

MEDIUM-HEAVY CODES: XNT = Low Cab Forward. D = Conventional Cab. S = School Bus. W = 4-Wheel Drive.

AR=Use as Required

# = New Part Number

Printed in U.S.A.

June, 1982