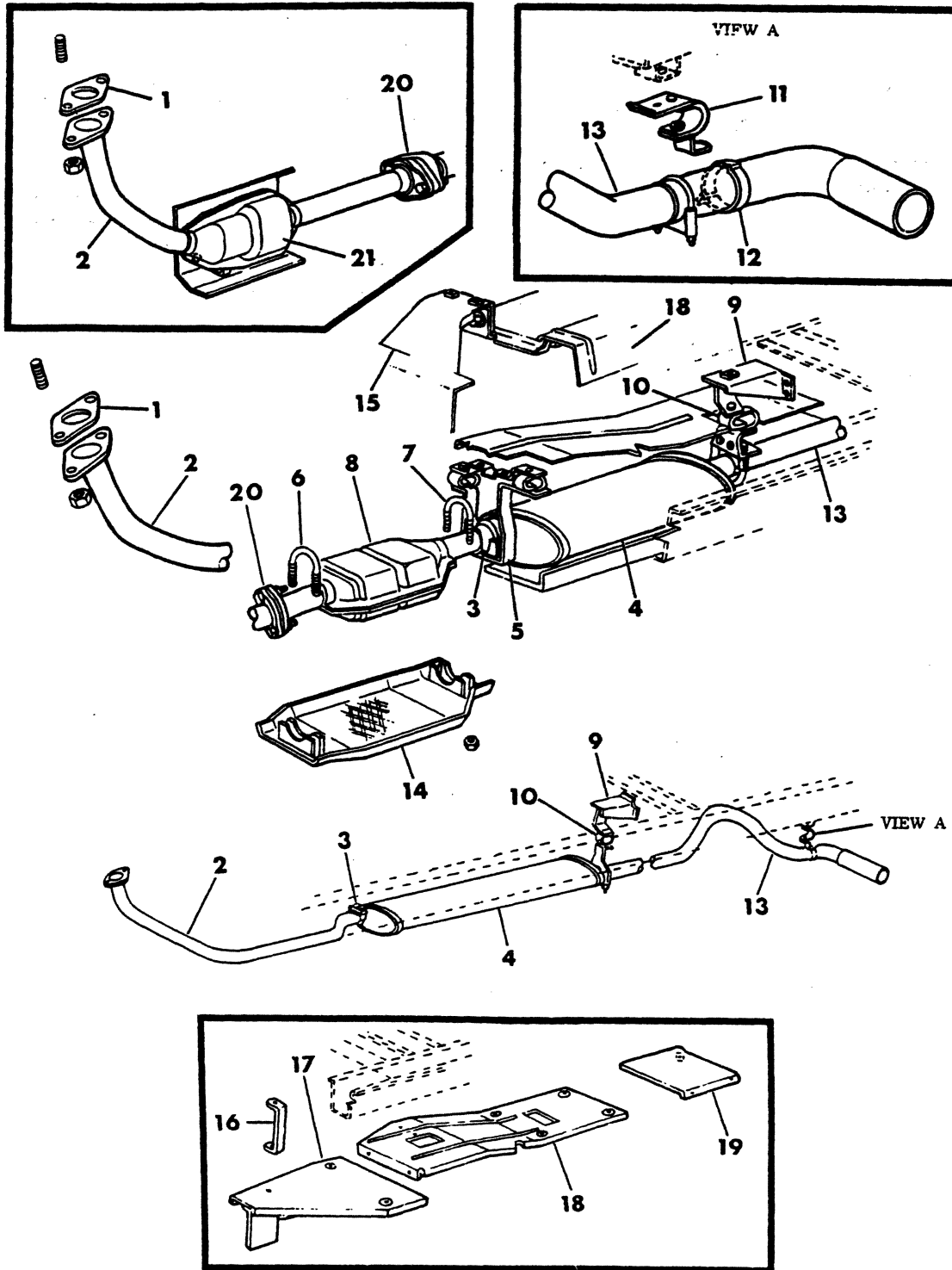


GROUP 11 - EXHAUST

EXHAUST SYSTEM B-CB-MB 6 CYLINDER ENGINE	Fig. 11-100
EXHAUST SYSTEM B-CB-MB 8 CYLINDER ENGINE	Fig. 11-125
EXHAUST SYSTEM D - W LIGHT DUTY 8 CYLINDER	Fig. 11-500
EXHAUST SYSTEM B1-2-3 DIESEL ENGINE-1979	Fig. 11-550
EXHAUST SYSTEM D-W1,2 - DIESEL ENGINE	Fig. 11-560
EXHAUST SYSTEM 360 ENGINE - LITTLE RED EXPRESS TRUCK	Fig. 11-575
EXHAUST SYSTEM MOTOR HOME	Fig. 11-600
EXHAUST SYSTEM P300	Fig. 11-800
EXHAUST SYSTEM - AD - AW With out Catalytic Convertor	Fig. 11-200
EXHAUST SYSTEM - AD - AW With Catalytic Convertor	Fig. 11-300
EXHAUST SYSTEM - (CONT) 6 CYLINDER D - W	Fig. 11-450
EXHAUST SYSTEM - EXHAUST PIPE HANGER 8 CYLINDER D - W	Fig. 11-525
EXHAUST SYSTEM M3-4-5-6 -IHC 446 ENG	Fig. 11-650
EXHAUST SYSTEM-6 CYLINDER D-W	Fig. 11-400

EXHAUST SYSTEM
B-CB-MB 6 CYLINDER ENGINE

8311 100B



EXHAUST

1978-81 LIGHT DUTY TRUCK PARTS CATALOG

ITEM	PART NUMBER	QTY	MODEL	DESCRIPTION
EXHAUST SYSTEM				
B-CB-MB 6 CYLINDER ENGINE				
1	2465 391	1		GASKET, Exh. Pipe Flange
	152 346	2		NUT, Exh. Pipe To Manif. Fig. Stud
2	3497 242	1		PIPE, Exhaust w/o Catalytic Converter 1978
	4116 458	1		1979
	4117 405	1	B1-2,3,CB3	1980-81
	4116 454	1		w/Catalytic Converter 1978
	4116 930	1		PLUG
	4116 454	1		1979
	4117 401	1	B1-2	w/o Med. Duty Cycle 1980
	4117 401	1	B1-2	w/Heavy Duty Cycle 1981
	4210 716	1	B2	w/Medium Duty Cycle 1980
	4218 017	1	B2-2	w/Emission Reduction System 1981
3	3404 298	AR		CLAMP Assy.
	4004 525	AR		CLAMP Assy. Muffler, And Tail Pipe 2 1/4" Dia.
	4004 959	AR		2" Dia. 1981
	4004 445	AR		2 1/2" Dia. 1980-81
	1843 008	AR		2 1/8 Dia. 1979-80-81
4	3733 806	1		MUFFLER 1978
	4115 381	1		1979
	4112 523	1		1980-81
5	4112 644	1		INSULATOR, Muffler Front
	181 086	2		SCREW, Insulator Supt. (5/16 - 18 .75)
6	4004 050	1		U-BOLT, Front
7	4004 049	1		U-BOLT, Rear
8	3898 205	1		CATALYTIC CONVERTOR, w/o Calif. Emission 1978-9
	4117 416	1	B1-2	w/o Medium Duty Cycle 1980
	4117 416	1	B1-2	w/Lite Duty Cycle w/or Emission Reduc. Sys.1981
	4213 146	1	B2	w/Medium Duty Cycle 1980
	4089 462	1		w/ calif. emission 1978
	4115 379	1		w/ calif. emission 1979
	4218 019	1		w/ calif. emission 1980-81
9	4032 957	1		BRACKET, Muffler Rear Support
10	3893 401	1		INSULATOR, Muffler Rear Supt.1978
	4112 646	1		1979
	4167 865	1		1980-81
11	3638 334	1		INSULATOR, Tail Pipe Rear 1978-79
	4167 426	1		1980-81
12	2585 698	1		CLAMP, Tail Pipe Extension
13	4032 891	1		PIPE, tail 109" w.b. 1978
	4032 892	1		127" w.b. 1978
	4032 895	1		109" w.b. 1979
	4167 334	1	B1-2	1980
	4117 446	1	B1-2	109" W.B. w/o Sound Control 1981
	4117 450	1	B1-2	109" W.B. w/Sound Control 1981
	4032 896	1		127" w.b. 1979
	4032 896	1	B1-2-3	1980
	4117 447	1	B1-2-3	127" W.B. w/o Sound Control 1981
	4117 451	1	B1-2-3	127" W.B. w/Sound Control 1981
	4032 897	1	CB-MB	145" w.b. 1979

LIGHT A = All Sport Utility (Ramcharger). B = All Compact Models. D = Conventional Cab.
DUTY AD = 2 Wheel Drive Only (Ramcharger). CB-MB = Compact Front Section Only. W = Conventional Cab 4 Wheel Drive.
CODES: AW = 4 Wheel Drive Only (Ramcharger). P = Forward Control Chassis. M = Motor Home.

MEDIUM-HEAVY CODES: XNT = Low Cab Forward. D = Conventional Cab. S = School Bus. W = 4-Wheel Drive.

AR=Use as Required

= New Part Number

Printed in U.S.A.

June, 1982

1978-81 LIGHT DUTY TRUCK PARTS CATALOG

EXHAUST

ITEM	PART NUMBER	QTY	MODEL	DESCRIPTION
------	-------------	-----	-------	-------------

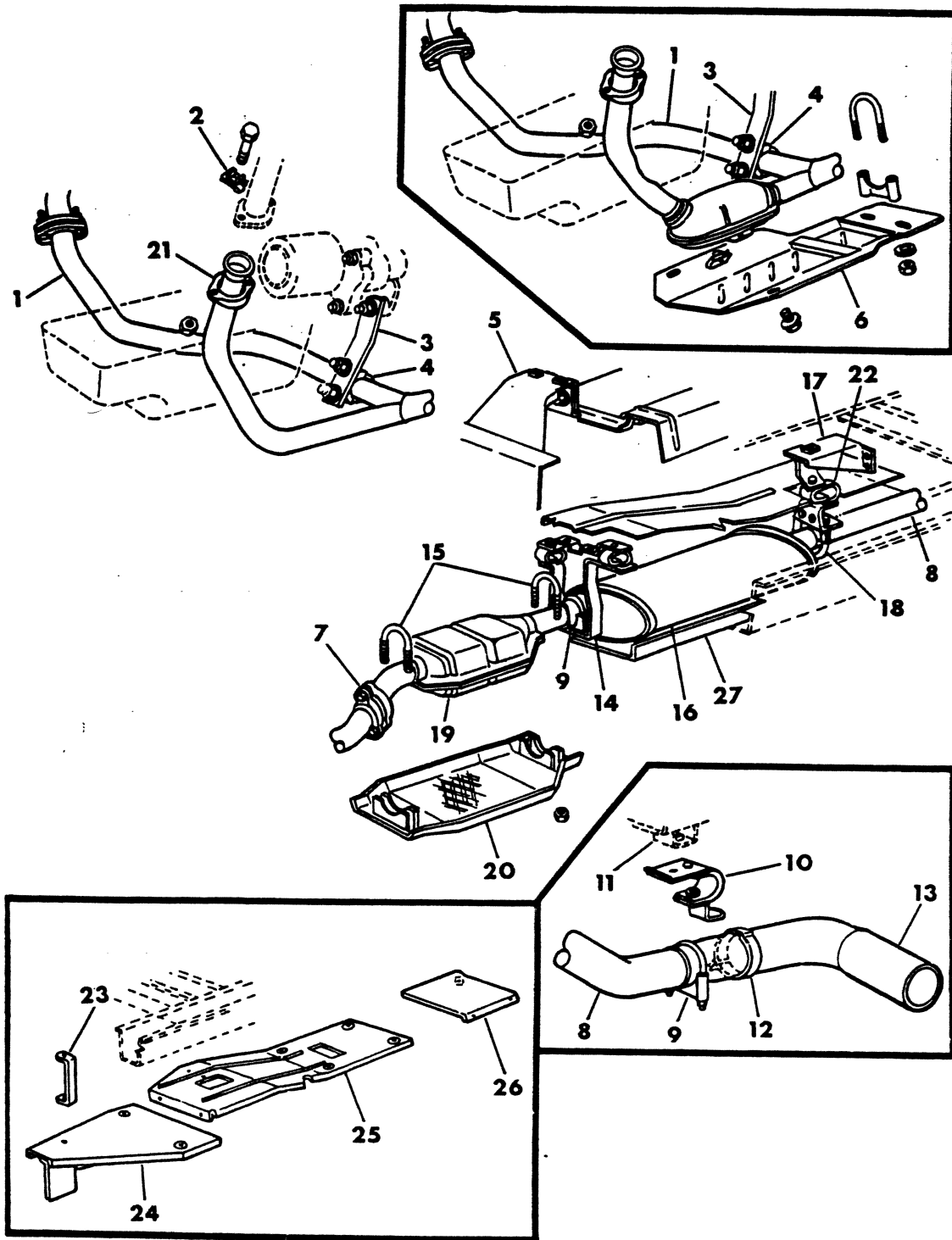
EXHAUST SYSTEM B-CB-MB 6 CYLINDER ENGINE

	4167 335	1	CB3,MB3-4	127" w.b 1980
	4117 684	1	B1-2-3	EXTENSION, Muff. Tail Pipe 1980-81
14	4004 384	1		SHIELD, Heat Converter Lower w/o Calif. Emission 1978-79
	4004 384	1	B1-2	w/Emission Reduction Sys. Calif. 1981
	4004 009	1		w/Calif. Emission 1978
15	4031 280	1		SUPPORT, upper heat shield
16	3893 717	1		SUPPORT, cata. conv. upper shield
17	3893 249	1		SHIELD, Cata. Conv. Upper 1978-79
	4117 439	1		1980
18	4039 355	1		SHIELD, Muffler Heat 1978-79
	4117 440	1	B1-2-3	1980
	4150 452	1	B1-2-3,MB2	w/o Emission Reduc. Sys. Calif. 1981
	4218 024	1	B2	w/Emission Reduction System Calif. (Aft 5-12-80)
	4140 723	1	B2	SHIELD, Frt. Exh. Pipe Starter Mtr. Ht. 1980
	4140 720	1	B1-2	w/Lite Duty Cycle w/10" Clutch 1980-81
19	4032 719	1		SHIELD, Tail Pipe Heat 1978-79
	4117 783	1		1980-81
20	1946 639	1		FLANGE, Cata. Conv. Frt. Pipe 1978-79
21	4210 716	1		CONVERTOR, Mini Ox w/Calif. Emission
	6031 148	1		PLUG, Mini Ox Analyzer Adapt. 1978-79
	4004 818	1	B2	SHIELD, Heat Mini-Ox Upr. And Lwr. 1980-81
	4210 717	1	B2	SUPPORT, Exh. Pipe Steady Rest w/Med. Duty Cycle w/Auto Trans. w/Mini-Ox 1980
	4210 717	1	B1-2	w/Emission Red. Sys. w/Auto. Trans. w/Mini Ox 1981
	4218 025	1	B1-2	w/o Emission Reduc. Sys. w/Auto Trans. w/Mini Ox 1981
	4210 718	1	B2	w/Med. Duty Cycle w/Man. Trans. w/o Mini Ox 1980
	4210 718	1	B1-2	w/Emission Red. Sys. w/Man. Trans. w/o Mini Ox 1981
	4218 026	1	B1-2	w/o Emission Red. Sys. w/Man. Trans. w/o Mini Ox 1981

LIGHT	A = All Sport Utility (Ramcharger).	B = All Compact Models.	D = Conventional Cab.
DUTY	AD = 2 Wheel Drive Only (Ramcharger).	CB-MB = Compact Front Section Only.	W = Conventional Cab 4 Wheel Drive.
CODES:	AW = 4 Wheel Drive Only (Ramcharger).	P = Forward Control Chassis.	M = Motor Home.
MEDIUM-HEAVY CODES: XNT = Low Cab Forward. D = Conventional Cab. S = School Bus. W = 4-Wheel Drive.			
AR=Use as Required		# =New Part Number	Printed in U.S.A.
			June, 1982

EXHAUST SYSTEM
B-CB-MB 8 CYLINDER ENGINE

8311 125



EXHAUST

1978-81 LIGHT DUTY TRUCK PARTS CATALOG

ITEM	PART NUMBER	QTY	MODEL	DESCRIPTION
EXHAUST SYSTEM				
B-CB-MB 8 CYLINDER ENGINE				
1	3828 443	1		PIPE, Exhaust 318,360 w/o Cata. Conv. 1978-79
	4117 406	1		1980-81
	3898 902	1		318,360 w/Cata. Conv. w/o Mini Ox 1978-79
	4117 403	1		1980-81
	4088 795	1	B1	318 Eng. w/Mini Ox 1979
	4117 404	1	B1-2-3	318,360 Eng. w/Cata. Conv. w/Mini Ox 1981
	4030 241	1		400 Eng. 1978
	4031 232	1		440 Eng. w/o Cata. Conv. 1978-79
	4037 288	1		440 Eng. w/Cata. Conv. 1978
	4112 538	1	CB,MB3-4	PIPE, Exh. Front 360-3 Eng. RT 1980-81
	4112 539	1		Left 1980-81
	4112 541	2	CB,MB3-4	PIPE, Exh. Rear 360-3 Eng. 1980-81
2	4004 001	4		RETAINER, exh. pipe flange
	181 127	4		BOLT, Exh. Pipe Flange
3	3893 792	1		SUPPORT, Exh. Pipe w/318-360 Eng.
	4037 715	1		400,440 Eng. 1978
	4112 526	1	CB,MB3-4	BRACKET, Exh. Pipe Supt. 360-3 Eng. 1980-81
4	1603 365	1		SADDLE, Exh. Supt. 318,360 Eng. 2 5/8
	1843 008	1		318-360 Eng. 2 1/8 1980-81
	1603 364	1		400,440 Eng. 2"
	1603 364	1	CB,MB3-4	360-3 Eng. 1980-81
5	4031 280	1		SUPPORT, Heat Shield (Up To 5-12-80)
	4150 451	1		(Aft.5-12-80)
6	4088 798	1		SHIELD, Mini Ox Conv. Heat 1978-79-80-81
7	1946 639	1		FLANGE, Cata. Conv. Frt. Pipe 1978-79
	1946 648	AR		NUT, Flange
8	4032 895	1	CB,MB3	PIPE, Tail 318,360 Eng. w/o Sound Control (HK4) 109" w.b. 1979
	4117 581	1	B1-2-3	All Eng. 109 W.B 1979
	4117 446	1	B1-2-3	All Eng. 109 W.B. 1980-81
	4167 334	1	MB3	109" W.B 1980-81
	4213 036	1	MB3	PIPE, Tail 360-3 Eng. 109" W.B. RT 1980-81
	4167 327	1		Left 1980
	4167 334	1		Left 1981
	4167 334	1	MB3	PIPE, Tail 360-4 Eng. 109 W.B. 1980
	4167 327	1	MB3	360-4 Eng. w/Sound Control 109" W.B.1980-81
	4032 896	1	CB,MB	360 Eng. 127 W.B. 1979
	4032 896	1	CB3	225,318 Eng. 127 W.B. 1979
	4117 582	1	B1-2-3	All Eng. B1 w/318-360 Eng. B2-3 127 W.B. 1979
	4167 335	1	CB,MB	127" W.B. 318,360 Eng. 1980-81
	4117 447	1	B1-2-3	127" W.B. 225-318-360 Eng. 1980-81
	4213 037	1	CB3,MB3-4	PIPE, TAIL 360-3 Eng. 127" W.B. RT 1980-81
	4167 328	1		Left 1980
	4167 335	1		Left 1981
	4032 897	1		145" W.B. 1978-79
	4167 336	1		360-3 Eng. 145 W.B. 1980
	4032 951	1		360-1, 400,440 eng. w/ sound control (HK4) 109"w.b.1978
	4112 933	1	CB,MB3	360 Eng. w/Sound Cont. 109 W.B. 1979
	4117 585	1	B2-3	360 Eng. w/Sound Cont. 109 W.B. 1979
	4117 585	1	B1-2	318 Eng. 1980

LIGHT DUTY CODES: A = All Sport Utility (Ramcharger). B = All Compact Models. D = Conventional Cab.
AD = 2 Wheel Drive Only (Ramcharger). CB-MB = Compact Front Section Only. W = Conventional Cab 4 Wheel Drive.
CODES: AW = 4 Wheel Drive Only (Ramcharger). P = Forward Control Chassis. M = Motor Home.

MEDIUM-HEAVY CODES: XNT = Low Cab Forward. D = Conventional Cab. S = School Bus. W = 4-Wheel Drive.

AR=Use as Required

=New Part Number

Printed in U.S.A.

June, 1982

1978-81 LIGHT DUTY TRUCK PARTS CATALOG

ITEM	PART NUMBER	QTY	MODEL	DESCRIPTION
EXHAUST SYSTEM				
B-CB-MB 8 CYLINDER ENGINE				
	4117 450	1	B2	360 ENG. 109" W.B. w/Sound Control 1980
	4117 450	1	B2	All Eng. 1981
	4167 327	1	MB3	360 ENG. 109" W.B. w/Sound Control 1980
	4032 952	1		127" w.b. 1978
	4112 934	1	CB,MB	360 Eng. w/Sound Cont. 127 W.B. 1979
	4117 586	1	B2-3	1979
	4117 451	1	B2-3	127" W.B. 360 Eng. w/Sound Control 1980
	4117 451	1	B2-3	All Eng. 1981
	4117 451	1	B1-2	127" W.B. 318 Eng. 1980
	4167 328	1	CB,MB	127" W.B. 318-360 Eng. 1980
	4032 953	1		145" w.b. 1978
	4213 038	1	CB3,MB4	360-3 Eng. 145"W.B. RT 1980-81
	4167 329	1		Left 1980
	4167 336	1		Left 1981
	4167 336	1	CB3,MB4	318,360 Eng. 145" W.B. w/o Sound Cont. 1980-81
	4167 329	1	CB3,MB4	318,360 Eng. 145" W.B. w/Sound Cont. 1981
	4036 365	1		360-3, 400,440 Eng. 163" w.b. 1978
	4112 934	1	B2-3	127" w.b. 1979
	4167 328	1	CB3,MB3-4	360 Eng. 127" w.b w/Sound Control 1980
	4112 934	1	MB3-4	440 eng. 1979
	4112 935	1	CB3,MB4	360 eng. 145" w.b. w/ sound control 1979
	4167 329	1	CB3,MB4	1980
	4112 935	1	MB4	145" w.b. 1979
	4167 329	1	MB4	1980
	4167 329	1	CB3,MB4	360-3 Eng. 145" w.b. w/Sound Control 1980
	4112 936	1	MB4	163" w.b. 1979
	4112 936	1	CB4	All 1979
	4213 039	1	CB,MB4	360-3 Eng. 163" W.B. Rt 1980-81
	4167 330	1		Left 1980
	4167 337	1		Left 1981
	4167 337	1	CB3	360-4 Eng. 163 W.B. w/o Sound Control 1980-81
	4167 330	1	CB3	360-4 Eng. 163 W.B. w/Sound Control 1980-81
9	4004 445	1		CLAMP, 360,400,440 Eng. 1978-79
	4004 445	1		318,360 Eng. 1980-81
	4004 445	1	CB,MB3-4	CLAMP, Tail Pipe Ext. Lt 360-3 Eng. 1981
10	3638 334	1		INSULATOR, Assy (Up To 9-20-78)
	4167 426	1		(After 9-20-78)
	4164 389	1	CB,MB3-4	INSULATOR, w/Brkt. And Support Tail Pipe Restrictor 360-3 Eng. (Not Shown) 1980-81
11	3493 606	1		BRACKET, Tail Pipe Supt.
	3820 043	2	CB,MB3-4	BRACKET, Tail Pipe Ext. Shpg. Purposes Only
	1394 152	AR		SPACER, Supt. Brkt. Insulator
	3493 605	AR	CB,MB	BRACKET, u/body c/mbr. tail pipe
12	2585 698	1		CLAMP- 318,360-1 eng. w/o sound control (HK4) or cata. conv.
	2585 698	1		360-3 Eng. 1981
	4004 237	1		360-1, 360-3, 400,440 Eng. w/ Sound Control (HK4) or Cata. Conv. (Up To 9-21-78)
	3466 652	1		(After 9-21-78)
	4004 237	1		318,360 Eng. w/Sound Cont. w/Dual Rr Whls. 1981

LIGHT A = All Sport Utility (Ramcharger). B = All Compact Models. D = Conventional Cab.
DUTY AD = 2 Wheel Drive Only (Ramcharger). CB-MB = Compact Front Section Only. W = Conventional Cab 4 Wheel Drive.
CODES: AW = 4 Wheel Drive Only (Ramcharger). P = Forward Control Chassis. M = Motor Home.

MEDIUM-HEAVY CODES: XNT = Low Cab Forward. D = Conventional Cab. S = School Bus. W = 4-Wheel Drive.

AR=Use as Required

#=New Part Number

Printed in U.S.A.

June, 1982

EXHAUST

1978-81 LIGHT DUTY TRUCK PARTS CATALOG

ITEM	PART NUMBER	QTY	MODEL	DESCRIPTION
EXHAUST SYSTEM				
B-CB-MB 8 CYLINDER ENGINE				
13	4030 210	1		EXTENSION, Tail Pipe 360,400,440 Eng. (Up To 9-21-78)
	4117 591	1		(After 9-21-78)
	4117 684	1	B2-3	360 Eng. w/Sound Control 1980-81
	4117 684	1	B1-2	318 Eng. 1980-81
	4167 331	1	CB,MB3	360-3 Eng. 127,109 W.B. w/Dual Wheels Lt. 1980
	4167 331	1	CB,MB3	318-360 Eng. w/Sound Control 1980
	4213 040	1	CB,MB3-4	360-3 Eng. w/o Sound Control 1980-81
	4036 012	1		w/ Dual Wheels 1978-79
	4167 332	1	CB3,MB3-4	318-360 Eng. w/Sound Cont. And Dual Wheels 1980-81
	4167 332	1	CB3,MB3-4	360-3 Eng. All W.B. w/Dual Rr Wheels 1980
14	4112 644	1		INSULATOR, Muffler Front Lt.
	4164 043	1		Rt. 1980-81
	4112 644	1		w/Single Exh. 1981
	3828 379	1		SUPPORT, Insulator Muffler Front
15	4004 050	2		U-BOLT
	4150 155	2	B3,CB,MB3-4	w/Heavy Duty Cycle 1980
16	3828 445	1		MUFFLER 318 eng. 1978
	4115 382	1		W/Cata. Conv W/Mini Ox 318 Eng 1979
	4112 524	1	B1-2-3,CB3	318 Engine All Trans. w/o Sound Cont. 1980
	3894 085	1		360 Eng. w/o Sound Control (HK4) 1978
	4039 796	1		360 Eng. w/Sound Control (HK4) 1978
	4115 384	1	CB,MB	360-3 Eng. 1979
	4218 036	2	CB,MB	360-3 Eng. w/127" W.B. 1980
	4213 125	2	CB,MB3-4	360-3 Eng. w/109,145,163 W.B. (Up To 10-15-79)
	4218 036	2	CB,MB3-4	(Aft 10-15-79)
	4218 036	2	CB,MB3-4	All Eng. CB-4, CB3,MB3,4 360-3 Eng. All W.B. 1981
	4115 384	1		360 Eng. 1979
	4112 525	1	B2-3,CB3	318 Eng. All Trans. W/Sound Cont. 1980
	4112 525	1	B2-3,CB,MB	360 Eng. All Trans. w/Sound Cont. 1980
	4112 525	1	B,CB3,MB	318,360 Eng. All Trans. w/o Sound Cont.1981
	3898 336	1		400,440 Eng. 1978
	4115 383	1	CB,MB	400,440 Eng. 1979
17	4032 956	1		BRACKET, u/body c/mbr. Tail Pipe 109" w.b. 1978-79-80
	4032 957	1		127" w.b.
18	4004 525	1		CLAMP, Tail Pipe 318,360-1 Eng. w/o Sound Control (HK4) 2 1/4" Dia.
	4004 445	1		360-1, 400,440 Eng. w/ Sound Control (HK4) 2 1/2" Dia. 1978-79-80
	4004 445	1		360-2, 360-4 Eng. 1980
19	3894 099	1		CATALYTIC CONVERTOR 318 Eng. (360 eng. calif) 1978-79
	4117 418	1	B2-3	360 Eng. w/Medium Duty Cycle 1980
	4117 418	1	B2-3	318 Eng. (Up To 11-12-79)
	4210 923	1	B2-3	(Aft 11-12-79)
	4210 923	1	B1-2-3	318,360 Eng. w/Lite Duty Cycle w/Emission Reduc. System 1981
	4030 352	1		360 Eng. w/o Calif Emission
	4164 221	1	B3,CB,MB3-4	318-360-4 Eng. w/Heavy Duty Cycle 1980-81
	4164 221	1	B1-2-3	318 Eng. w/Air Pump 1980-81
	4117 417	1	B1-2-3	318-360 Eng. w/Light Duty Cycle 1980
	4117 417	1	B1-2-3	318-2,360 Eng. 318-1 Eng. w/Aspirator 1981
	4150 457	1	CB,MB3-4	360-3 Eng. w/Emission System 2 1980
	4150 457	1	CB,MB3-4	360-3 Eng. w/o Emission System 2 1981

LIGHT DUTY CODES: A = All Sport Utility (Ramcharger). B = All Compact Models. D = Conventional Cab.
AD = 2 Wheel Drive Only (Ramcharger). CB-MB = Compact Front Section Only. W = Conventional Cab 4 Wheel Drive.
AW = 4 Wheel Drive Only (Ramcharger). P = Forward Control Chassis. M = Motor Home.

MEDIUM-HEAVY CODES: XNT = Low Cab Forward. D = Conventional Cab. S = School Bus. W = 4-Wheel Drive.

AR=Use as Required

=New Part Number

Printed in U.S.A.

June, 1982

1978-81 LIGHT DUTY TRUCK PARTS CATALOG

EXHAUST

ITEM	PART NUMBER	QTY	MODEL	DESCRIPTION
------	-------------	-----	-------	-------------

EXHAUST SYSTEM B-CB-MB 8 CYLINDER ENGINE

	3894 099	1		440 Eng. 1978-79
20	4004 385	1		SHIELD, Heat Conv. Lower w/318-360-3 Eng. 1978-79-80
	4150 165	1	B,CB3,MB3-4	318-360-4 Eng. w/Heavy Duty Cycle 1980-81
	4150 165	1	B1-2-3	318 Eng. w/Air Pump 1980
	4114 050	2		U-BOLT, Cata. Conv. Lwr. Ht. Shield w/Light Duty Cycle 1980
	4150 155	2		w/Heavy Duty Cycle 1980-81
21	3466 230	1		FLANGE, Exh. Pipe 360 Eng. 1978
22	3497 444	1		INSULATOR, 318,360 Eng. w/o Sound Control (HK4) or Cata. Conv. 1978
	3820 811	1		360-1 Eng. w/ Sound Control (HK4) or Cata. Conv. 1978
	3820 811	1		360-3, 400,440 Eng. 1978
	4112 646	1		1979
	4167 865	1		318, 360 Eng. 1979-80-81
23	3893 717	1		SUPPORT, heat shield
24	3893 249	1		SHIELD, Heat Upper 1978-79
	4117 439	1		1980
	4164 036	1	CB,MB3-4	SHIELD, Cata. Conv. Heat Upper RT 360-3 Eng. w/Emission System
				2 1980-81
	4164 035	1		Left 1980-81
25	4039 355	1		SHIELD, Muffler Heat Upper 1978-79
26	4032 719	1		SHIELD, Tail Pipe Heat Upper 1978
	4117 783	1	B1-2-3	1979-80-81
	4117 783	1	MB3-4	440 Eng. 1979
	4117 783	1	CB,MB3-4	SHIELD, U/Body Rr Fir. Panel Heat Lt. 360-3 Eng. 1980-81
	4164 469	1		RT.
27	3897 947	1		SHIELD, Muffler Heat Lower 1978-79
	4117 594	1		SHIELD, Fuel Filler Heat 1979 (Not Shown)
	4164 386	1	CB,MB3-4	SHIELD, Fuel Tank Heat w/360 Eng. Rt 1980-81
	4164 387	1	B1-2-3 CB,MB	Left 1980
	4164 034	1	CB,MB3-4	SHIELD, Muffler Heat w/360-3 Eng. RT Up To 5-12-80
	4150 454	1		Aft 5-12-80
	4117 440	1		Left (Up TO 5-12-80)
	4150 452	1		Left (Aft 5-12-80)
	4117 440	1	B,CB,MB	CB 360-2-4 MB 360-4 127,145 W. B. (Up To 5-12-80)
	4150 452	1	B,CB,MB	(Aft 5-12-80)
	4117 440	1	CB3	318 Eng. (Up TO 5-12-80)
	4150 452	1	CB3	(Aft 5-12-80)

LIGHT	A = All Sport Utility (Ramcharger).	B = All Compact Models.	D = Conventional Cab.
DUTY	AD = 2 Wheel Drive Only (Ramcharger).	CB-MB = Compact Front Section Only.	W = Conventional Cab 4 Wheel Drive.
CODES:	AW = 4 Wheel Drive Only (Ramcharger).	P = Forward Control Chassis.	M = Motor Home.

MEDIUM-HEAVY CODES: XNT = Low Cab Forward. D = Conventional Cab. S = School Bus. W = 4-Wheel Drive.

AR=Use as Required

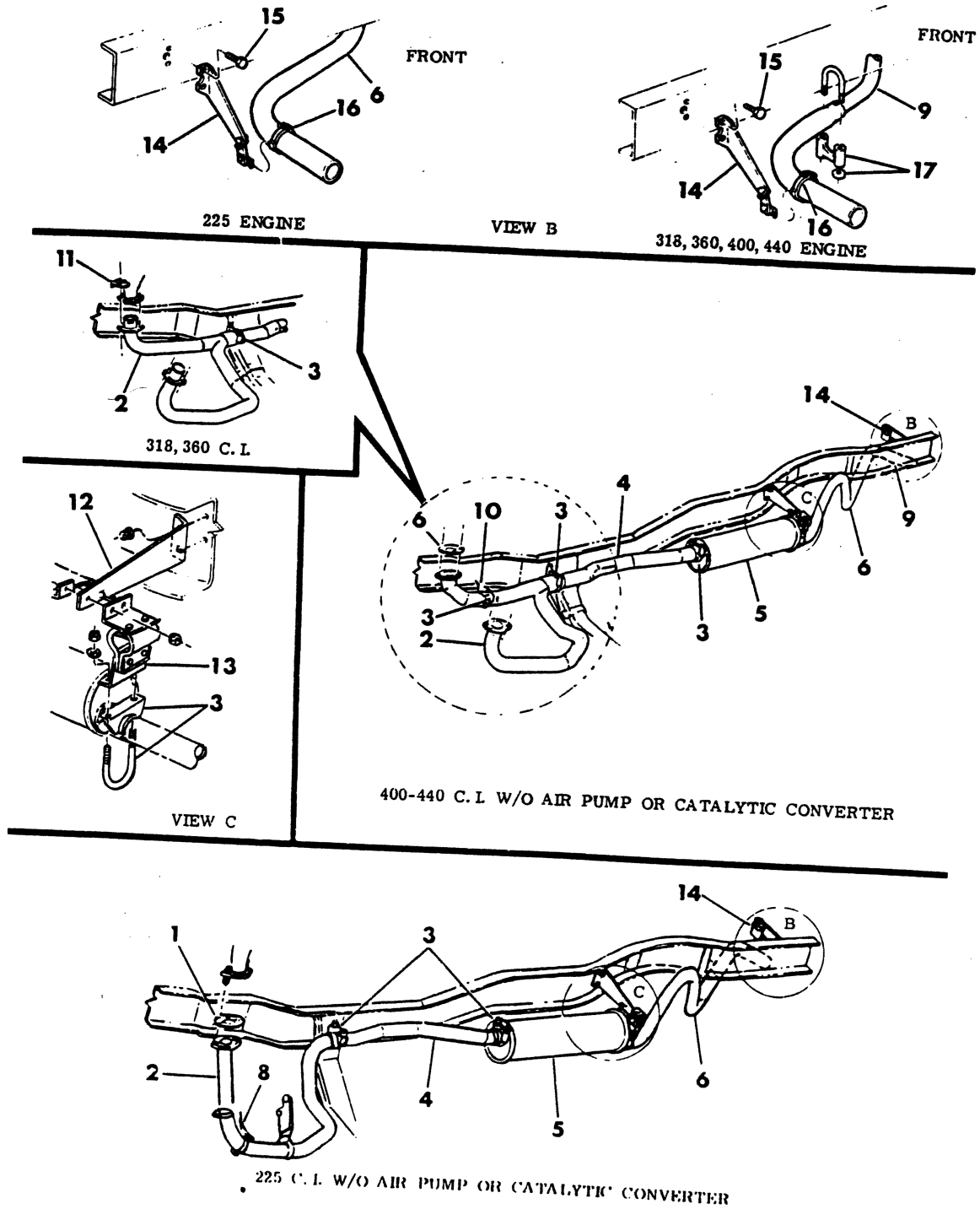
=New Part Number

Printed in U.S.A.

June, 1982

8311 200A

EXHAUST SYSTEM - AD - AW With out Catalytic Converter



EXHAUST

1978-81 LIGHT DUTY TRUCK PARTS CATALOG

ITEM	PART NUMBER	QTY	MODEL	DESCRIPTION
EXHAUST SYSTEM - AD - AW				
With out Catalytic Converter				
1	2465 391	1	A	GASKET, Exh Pipe Flange
2				PIPE, Exh Frt.
	3496 843	1	AD	225 Eng.
	3823 780	1	AW	225 Eng.
	3828 907	1	AW	318,360 Eng. 1978
	3898 902	1	AD	318,360 Eng. 1978
	3823 800	1	AW	400 Eng.
	3828 908	1	AD	318,360 Eng. w/ Hvy Duty Cyle Eng.
	4030 576	1	AD	400 Eng.
	3823 784	1	AW	440 Eng.
	3898 903	1	AD	225 eng. 1979
	3898 904	1	AD	318, 360 Eng. 1979
	4117 410	1		1980
	3898 905	1	AW	318, 360 Eng. 1979
	4117 411	1		1980-81
3	1843 009	AR		CLAMP PKG. (1- 15/16")
	1603 364	AR		2"
	1843 008	AR		2 1/8"
	4004 445	AR		2 1/2"
	1603 365	AR		2 - 5/8"
	4004 525	AR		2 - 1/4"
	1843 010	1		SADDLE, Muffler & Exh Pipe
	4004 401	1		U-BOLT
	4004 525	1		CLAMP assy. muffler and tail pipe
4				PIPE, Exh Rear
	3823 786	1	AW	225 Eng.
	3893 709	1	AD	225 Eng. 1978
	3823 790	1	AW	318,360,400 Eng 1978
	4115 404	1	AW	1979
	4117 434	1	AW	1980-81
	3893 710	1	AD	318,360 Eng w/ hvy. duty eng. 1978
	4115 406	1	AD	1979
	4164 124	1		1980
	4030 447	1	AD	400 Eng 1978
5				MUFFLER
	3827 418	1		225 Eng. 1978
	4115 381	1	AD	1979
	4112 523	1	AD	1980
	4036 881	1		318, 360 Eng. 1978
	4115 382	1		318 Eng. 1979
	4112 524	1		All Trans. w/o Sound Cont. 1980
	4115 384	1		360 Eng. 1979
	4112 525	1	AD,AW1	All Trans. w/Sound Cont. 1980
	4218 021	1	AW1	318-2,360-4 Eng. w/Emission Reduction System 1981
	4036 882	1		400,440 Eng. 1978
6				PIPE, Tail
	3898 459	1		225 Eng. w/o HK4 (Sound Control) 1978
	4115 409	1		1979
	3898 466	1		225 Eng. w/ HK4 (Sound Control) 1978

LIGHT	A = All Sport Utility (Ramcharger).	B = All Compact Models.	D = Conventional Cab.
DUTY	AD = 2 Wheel Drive Only (Ramcharger).	CB-MB = Compact Front Section Only.	W = Conventional Cab 4 Wheel Drive.
CODES:	AW = 4 Wheel Drive Only (Ramcharger).	P = Forward Control Chassis.	M = Motor Home.

MEDIUM-HEAVY CODES: XNT = Low Cab Forward. D = Conventional Cab. S = School Bus. W = 4-Wheel Drive.

AR=Use as Required

=New Part Number

Printed in U.S.A.

June, 1982

1978-81 LIGHT DUTY TRUCK PARTS CATALOG

EXHAUST

ITEM	PART NUMBER	QTY	MODEL	DESCRIPTION
EXHAUST SYSTEM - AD - AW				
With out Catalytic Converter				
	3898 466	1		318,360 Eng. 1978
	4115 414	1	AD	225 eng. w/ sound control (HK4) 1979
	4115 414	1	AD-AW	318,360 Eng. 1979
	4117 460	1		1980-81
	3898 478	1		400,440 Eng. 1978
9				EXTENSION, Tail Pipe
	3898 746	1		318 Eng., 225 Eng. (w/sound control HK4) 1978-79
	4164 134	1		318 Eng. 1980
	3898 748	1		360, 400, 440 Eng. 1978-79
	4164 136	1		360-2-360-4 Eng. w/Sound Control HK4 1980
10		1		BRACKET (Not Serviced)
11	4004 001	4		RETAINER, Exh Pipe Bolt
12	4030 907	1		BRACKET, Tail Pipe Insulator
13	4030 398	1		Up TO 4-2-79
	4164 253	1		From 2-1-80
	4213 335	1		After 2-1-80
14	4167 427	1		SUPPORT, Tail Pipe
15	1810 884	2		SCREW 5/16 - 18 X 1/2
16				CLAMP
	2240 312	1		225 Eng. 1978-79
	3466 652	1		318 Eng.
	4004 237	1		360, 400, 440 Eng. 1978-79
	4004 237	1		360-2,360-4 Eng. 1980-81
17	4004 445	1		CLAMP Assy. 2 1/2" Dia.
FOLLOWING ITEMS NOT SHOWN.				
	4088 798	1	AD	SHIELD, Mini Ox. Conv. Heat 318 Eng. 1978-79
	2240 312	1	AD1	CLAMP, Tail Pipe w/225 Eng. 1980

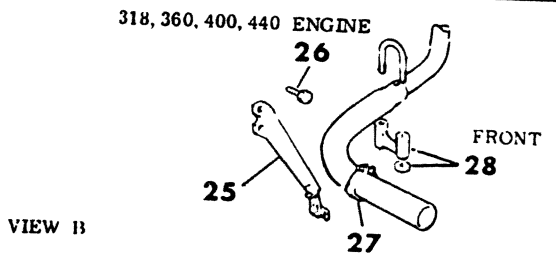
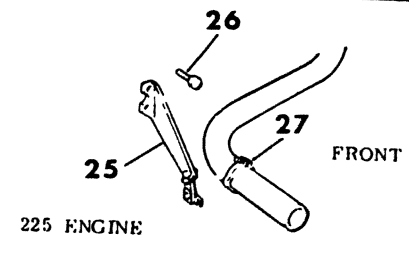
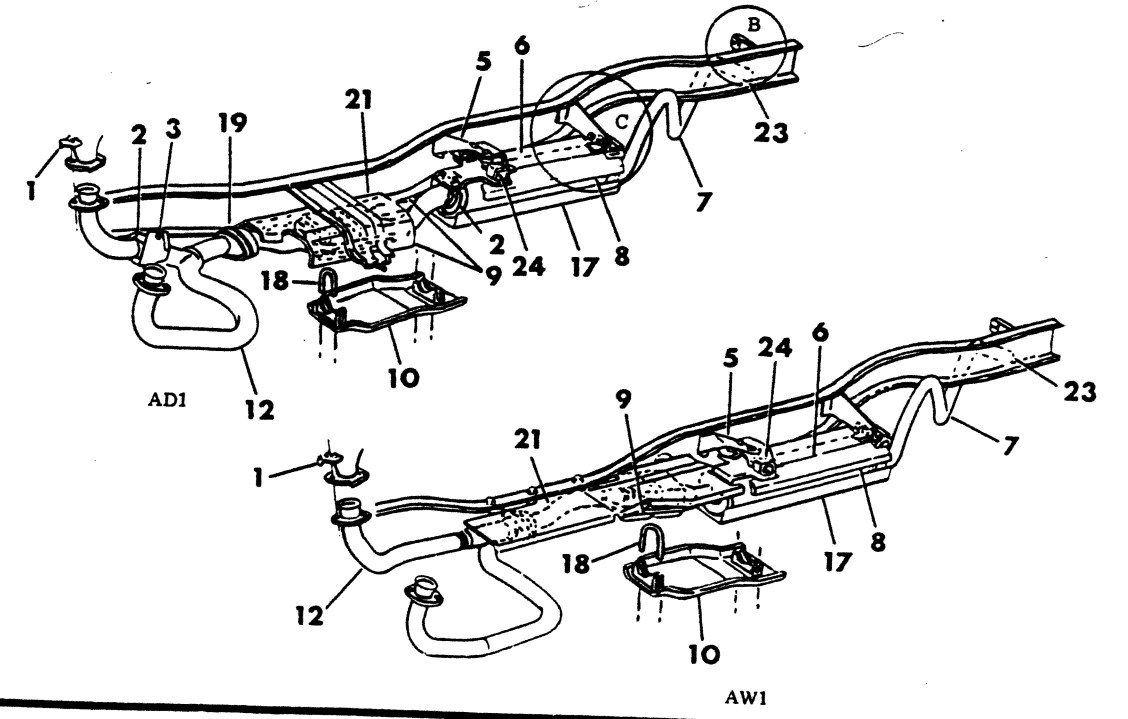
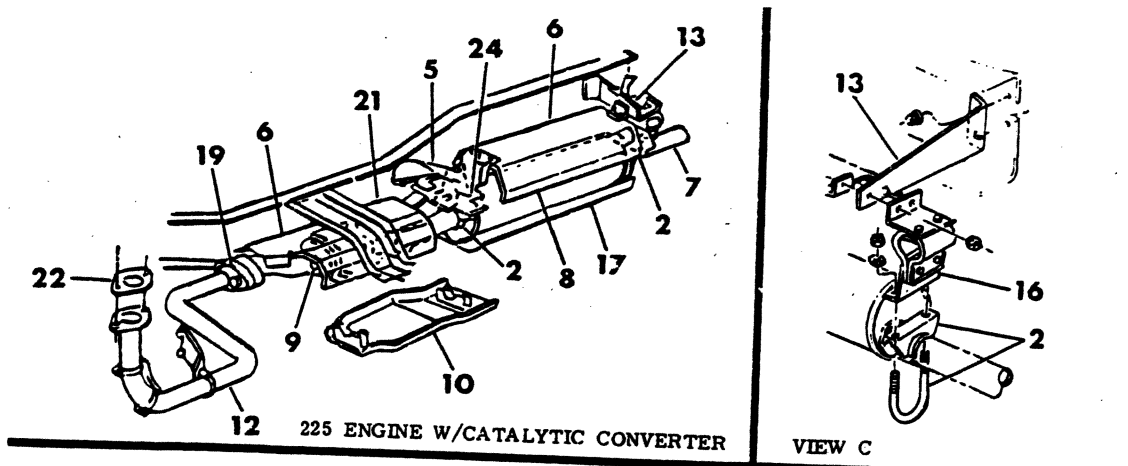
LIGHT	A = All Sport Utility (Ramcharger).	B = All Compact Models.	D = Conventional Cab.
DUTY	AD = 2 Wheel Drive Only (Ramcharger).	CB-MB = Compact Front Section Only.	W = Conventional Cab 4 Wheel Drive.
CODES:	AW = 4 Wheel Drive Only (Ramcharger).	P = Forward Control Chassis.	M = Motor Home.

MEDIUM-HEAVY CODES: XNT = Low Cab Forward. D = Conventional Cab. S = School Bus. W = 4-Wheel Drive.

AR=Use as Required # =New Part Number Printed in U.S.A. June, 1982

8311 300

EXHAUST SYSTEM - AD - AW
 With Catalytic Converter



ITEM	PART NUMBER	QTY	MODEL	DESCRIPTION
EXHAUST SYSTEM - AD - AW With Catalytic Converter				
1	4004 001	4		RETAINER, Exh Pipe Bolt
2				CLAMP Pkg.
	1843 009	AR		1 - 15/16"
	1603 364	AR		2"
	1843 008	AR		2 - 1/8"
	1603 365	AR		2 - 5/8"
	4004 525	AR	AD	CLAMP Muffler & Tail Pipe 225 Eng.
	4004 445	1	AD	CLAMP, Muffler & Tail Pipe 318, 360 Eng. 2 1/2" Dia.
	4004 525	AR		2 1/4" Dia.
3				SUPPORT, Exh Pipe
	3898 272	1	AD	318, Eng, Man. Trans. 1978
	4032 413	1	AD	1979
	3898 273	1	AD	318, 360, Eng. Auto. Trans.
	4039 350	1	AW	400,440, Eng. 1978
	3633 183	1	AD	400,440, Eng. 1978
	4213 091	1	AD,AW	BRACKET, Exh. Pipe And Muff. Supt. 318,360 Eng. 1981
5	3823 394	1		BRACKET, Heat Shield Supt. 1978
	4112 635	1	AD	1979-80
	4112 636	1	AW	1979
6	3828 428	1		SHIELD, Muffler Heat Upper
7				PIPE, Tail
	3898 466	1		225 Eng. w/ HK4 (Sound Control) 1978
	3898 459	1		w/O Sound Control 1978
	3898 466	1		318, 360 Eng. 1978
	4115 414	1		1979
	4117 460	1		1980-81
	3898 478	1	AW	400 Eng. 1978
8				MUFFLER,
	3827 418	1		225 Eng. w/o HK4 (Sound Control) 1978
	4089 194	1		w/Sound Control 1978
	4115 381	1		1979 w/ Calif. Emmission
	4036 881	1		318, 360 Eng. 1978
	4115 382	1		318 Eng. 1979
	4112 524	1	AD1	318 Eng. 1980
	4213 062	1	AW1	318 Eng. 1980
	4115 384	1		360 Eng. 1979
	4112 525	1		360 Eng. 1980
	4112 525	1		318,360 Eng. 1981
	4036 882	1	AW	440 Eng.
9				CONVERTOR, Catalytic
	4030 987	1	AD	225 Eng. 1978
	4115 391	1	AD	1979
	4117 419	1		1980
	3894 202	1	AW	318, Eng. 360 (Calif), 440 Eng. 1978
	4115 388	1	AW	1979
	4116 549	1	AW1	360-4 Eng. 1980
	4116 549	1	AW1	318, 360-4 Eng. w/Lite Duty Cycle 1981
	4213 053	1	AW1	318-1 Eng. 1980
	4164 219	1	AW1	318-1 Eng. w/Air Pump 1981

LIGHT A = All Sport Utility (Ramcharger).

B = All Compact Models.

D = Conventional Cab.

DUTY AD = 2 Wheel Drive Only (Ramcharger).

CB-MB = Compact Front Section Only.

W = Conventional Cab 4 Wheel Drive.

CODES: AW = 4 Wheel Drive Only (Ramcharger).

P = Forward Control Chassis.

M = Motor Home.

MEDIUM-HEAVY CODES: XNT = Low Cab Forward. D = Conventional Cab. S = School Bus. W = 4-Wheel Drive.

AR=Use as Required

=New Part Number

Printed in U.S.A.

June, 1982

1978-81 LIGHT DUTY TRUCK PARTS CATALOG

EXHAUST

ITEM	PART NUMBER	QTY	MODEL	DESCRIPTION
EXHAUST SYSTEM - AD - AW				
With Catalytic Converter				
	4118 022	1	AW1	318-2, 360-4 Eng. w/Emission Reduc. System 1981
	3894 205	1	AD	318, Eng. 360 (Calif) Eng. 1978
	4115 389	1	AD	1979
	4164 162	1		1980-81
	4030 355	1	AD	360 Eng. w/o Calif Emmissions
	4030 354	1	AW	360 Eng. w/o Calif Emmissions
	4088 794	1	AD	CONVERTOR w/PIPE, Mini-Ox 318-2 Eng. (Not Shown) 1978-79
	4116 541	1		1980
10	SHIELD, Converter Heat Lower			
	4004 384	1	AD	225 Eng.
	4004 016	1	AD	225 Eng. w/ calif. emmission 1979
	4032 958	1	AW	225 Eng. 1978
	4004 385	1	AD	318, 360 Eng. 1978-79
	4004 385	1	AD	318-1 Eng. w/Lite Duty Cycle 1981
	4032 959	1	AW	318, 360, 440 Eng. 1978
	4032 959	1	AD,AW	318, 360 Eng. 1980
	4032 959	1	AW	318,360 Eng. w/Lite Duty Cycle 1981
	4004 385	1	AW	1979
	4088 798	1	AD1	318-2 Eng. w/Mini-Ox 1978-79
	4088 798	1	AW1	318-2, 360-4 Eng. w/Mini Ox 1981
12	PIPE, Exhaust			
	3898 903	1	AD	225 Eng. 1978
	4116 453	1	AD	1979
	4117 407	1		1980
	3898 905	1	AW	318,360 Eng. 1978-79
	4117 411	1		1980-81
	3898 904	1	AD	318,360 Eng. 1978-79
	4117 410	1		1980-81
	4037 292	1	AW	440 Eng. 1978
13	4030 907	1		SUPPORT, Muffler Rear (Up To 2-1-80)
	4213 334	1		(After 2-1-80)
16	4030 398	1		INSULATOR, Muffler & Tail Pipe Supt. Up To 4-2-79
	4164 253	1		Aft 4-2-79
17	3879 926	1		SHIELD, Muffler Heat Lower 1978
	3897 930	1		STRAP, Muffler Heat Lower
	3897 929	1		225 Eng. 1978
	4004 050	1		318,360,440 Eng. 1978
18	4150 155	1	AD	U-BOLT, Cata. Conv. Shield Front
	4004 049	1	AW	Rear 1980
19	1946 639	1		FLANGE, Cata. Conv. Front Pipe 1978-79
	1946 648	AR		NUT, Conv. Frt. Pipe Flange
21	SHIELD, Cata. Conv. Upper			
	3827 818	1	AD	225,318,360 Eng. 1978-79
	4117 464	1		1980-81
	3897 988	1	AW	318,360,440 Eng. 1978-79
	4164 778	1	AW	318,360 Eng. 1980-81
22	2465 391	1		GASKET, Exh. Pipe Flange 1978-79-80
23	EXTENSION, Tail Pipe			

LIGHT DUTY CODES:	A = All Sport Utility (Ramcharger).	B = All Compact Models.	D = Conventional Cab.
	AD = 2 Wheel Drive Only (Ramcharger).	CB-MB = Compact Front Section Only.	W = Conventional Cab 4 Wheel Drive.
	AW = 4 Wheel Drive Only (Ramcharger).	P = Forward Control Chassis.	M = Motor Home.

MEDIUM-HEAVY CODES: XNT = Low Cab Forward. D = Conventional Cab. S = School Bus. W = 4-Wheel Drive.

AR=Use as Required # =New Part Number Printed in U.S.A. June, 1982

ITEM	PART NUMBER	QTY	MODEL	DESCRIPTION
EXHAUST SYSTEM - AD - AW				
With Catalytic Converter				
	3898 746	1		318 Eng. 1978-79
	4164 134	1		1980-81
	3898 748	1		360,400,440 Eng. 1978-79
	4164 136	1		360 Eng. 1980-81
24				INSULATOR, Muffler Supt.
	3827 440	1		225 Eng. 1978
	3823 886	1		318, 360, 440 Eng. 1978
	4115 424	1		All Eng. 1979
	4213 063	1	AW1	318 Eng. 1980
25	4167 427	1		SUPPORT, Tail Pipe
27	2240 311	1		CLAMP, 225 Eng. 1978-79
	3466 652	1		318 Eng.
	4004 237	1		360,400,440 Eng. 1978-79
	4004 237	1		360-2,360-4 Eng. 1980-81
28	4004 445	1		CLAMP Assy. 2 1/2" Dia.

LIGHT	A = All Sport Utility (Ramcharger).	B = All Compact Models.	D = Conventional Cab.
DUTY	AD = 2 Wheel Drive Only (Ramcharger).	CB-MB = Compact Front Section Only.	W = Conventional Cab 4 Wheel Drive.
CODES:	AW = 4 Wheel Drive Only (Ramcharger).	P = Forward Control Chassis.	M = Motor Home.

MEDIUM-HEAVY CODES: XNT = Low Cab Forward. D = Conventional Cab. S = School Bus. W = 4-Wheel Drive.

AR=Use as Required

=New Part Number

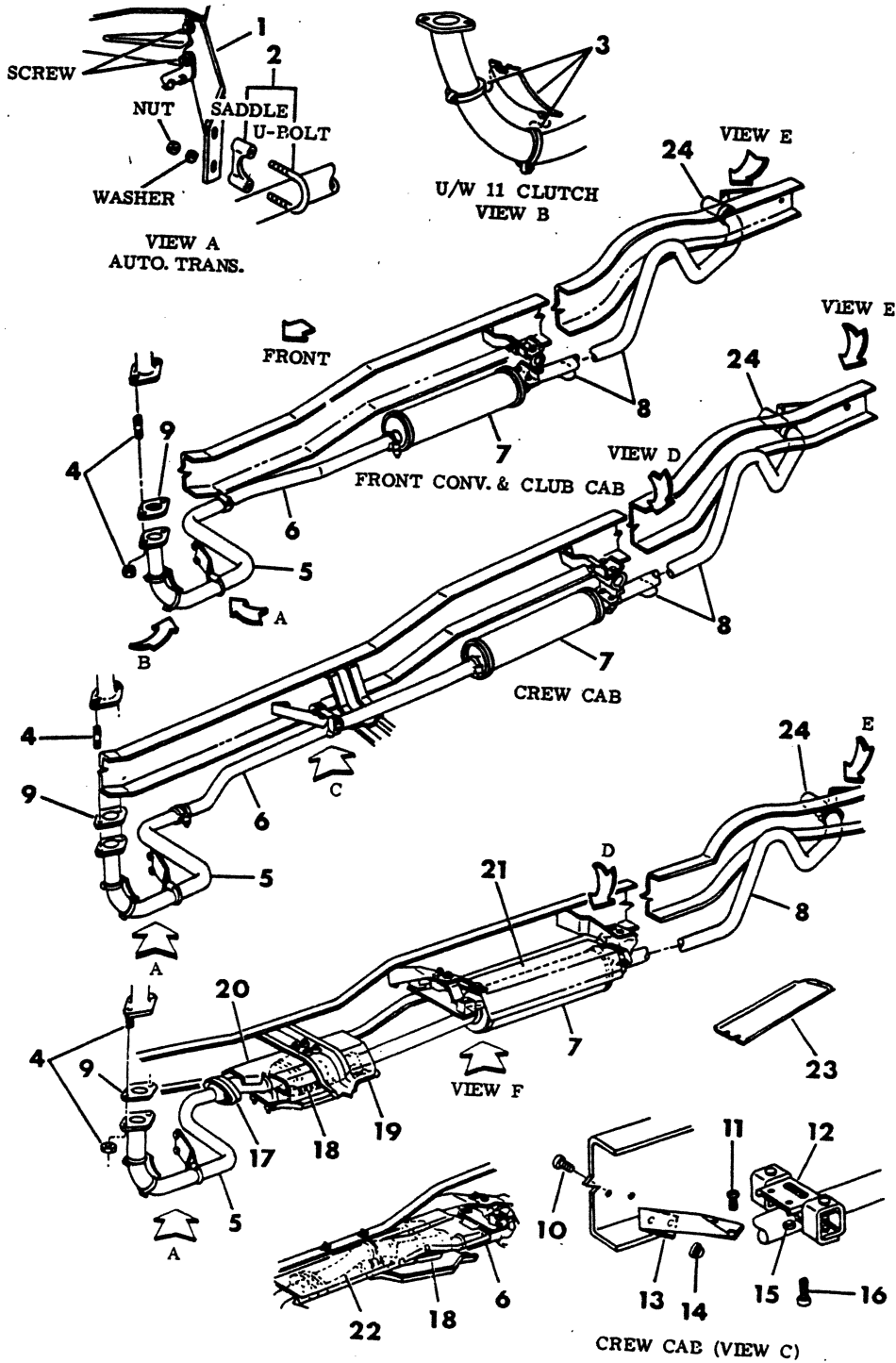
Printed in U.S.A.

June, 1982

1978-81 LIGHT DUTY TRUCK PARTS CATALOG

8311 400A

EXHAUST SYSTEM-6 CYLINDER D-W



ITEM	PART NUMBER	QTY	MODEL	DESCRIPTION
EXHAUST SYSTEM-6 CYLINDER D-W				
1	4210 737	1		SUPPORT, Exh. Pipe 1978
2	1843 009	AR		CLAMP PKG. 1-5/16"
	1603 364	AR		2"
	1843 008	AR		2-1/8"
	1603 365	AR		2-5/8"
3	3633 108	1		SHIELD, Starter Motor Heat w/11" Clutch
	4140 723	1	D1	w/Med Duty Cycle 1980
	4140 720	1	D1-2,W1	w/Lite Duty Cycle 1981
	2448 763	2		CLAMPS
	6024 380	2		STUD, 7/16-14
4	152 346	2		NUT, 7/16-14
	3496 843	1	D	PIPE, Exhaust Front 1978
5	3823 780	1	W	Exhaust Front 1978
	3898 903	1	D	w/Cat. Converter w/o Air Pump Tube Flange 1978
	4116 453	1	D	w/Air Pump Tube Flange 1979
	4117 407	1	D1	w/Light Duty Cycle 1980-81
	4117 407	1	D2-3,AD1	All Trans. 1980-81
	4167 841	1	D1	w/Medium Duty Cycle 1980
	4218 018	1	D1	w/Emission Reduction Sys. 1981
	3827 442	1	W	w/Cat. Converter 1978
	4116 456	1	W	1979
	4117 408	1	W	1980-81
	4115 862	1	W2	PIPE, Exhaust Intern. Crew Cab (Not Shown) 1979
	4117 437	1	W2	1980
	4115 398	1	W2	w/Conv. and Club Cab 1979
	4117 431	1	W1,2,3	1980-81
	4115 866	1	D2-3	PIPE, Exhaust Intern. Crew Cab (Not Shown) 1979
4164 139	1	D2-3	1980	
6	4030 572	1	D	PIPE, Exhaust Rear, Short 1978
	4115 394	1	D	1979
	4117 429	1	D	1980-81
	4030 573	1	D	w/Crew Cab, Long Pipe 1978
	4115 399	1	D2-3	1979
	4164 104	1	D2-3	1980
	3823 787	1	W	Short Pipe
	3823 788	1	W	Long Pipe 1978
	4115 399	1	W2	1979
	3827 439	1	W	w/Cat.Conv.
	4115 395	1	W	PIPE, Exh. Rear 1979
	4117 436	1	W	1980-81
7	3827 418	1	D-W	MUFFLER,w/o Sound Control (HK4) 1978
	4089 194	1	D-W	w/ Sound Control (HK4) 1978
	4115 381	1	D-W	All 1979
	4112 523	1	D-W	1980-81
1980				
PIPE, MUFFLER TAIL 1978				
8	3898 459	1	D-W1,2	PIPE,Tail 115-149" W.B. Crew Cab
	3898 461	1	D1,2,3	131-165" W.B.
	3820 069	1	D3	135-159-165" W.B. Short Pipe

LIGHT A = All Sport Utility (Ramcharger).

B = All Compact Models.

D = Conventional Cab.

DUTY AD = 2 Wheel Drive Only (Ramcharger).

CB-MB = Compact Front Section Only.

W = Conventional Cab 4 Wheel Drive.

CODES: AW = 4 Wheel Drive Only (Ramcharger).

P = Forward Control Chassis.

M = Motor Home.

MEDIUM-HEAVY CODES: XNT = Low Cab Forward. D = Conventional Cab. S = School Bus. W = 4-Wheel Drive.

AR=Use as Required

= New Part Number

Printed in U.S.A.

June, 1982

1978-81 LIGHT DUTY TRUCK PARTS CATALOG

EXHAUST

ITEM	PART NUMBER	QTY	MODEL	DESCRIPTION
EXHAUST SYSTEM-6 CYLINDER				
D-W				
	3898 461	1	D-W1	133" W.B. Club Cab
	3898 462	1	D-W1,2	149" W.B. Club Cab
	3898 462	1	D3	149" W.B.
	3898 461	1	W1,2	131" W.B. Conv. Cab
	3820 069	1	W2,3	Conv. Cab Short Pipe
	3898 466	1	W1	115" W.B. All w/ Sound Control (HK4)
	3898 466	1	W2,D1,2	149" W.B. Crew Cab w/ Sound Control (HK4)
	3898 468	1	D-W1,2,3	131" W.B. D2 w/165" w/ Sound Control (HK4)
	3898 470	1	D-W1	133" W.B. w/ Sound Control (HK4)
	3898 472	1	D-W1,2	149" W.B. Club Cab w/ Sound Control (HK4)
	3898 472	1	D3	All w/ Sound Control (HK4)
PIPE, MUFFLER TAIL 1979-80				
	4115 409	1	D,W1	115" w.b. w/o sound control (HK4)
	4117 455	1	D,W1	1980-81
	4115 409	1	D,W2	149" w.b. w/o sound control (HK4), crew cab
	4117 455	1	D,W2	1980-81
	4115 410	1	D,W1-2	131", 165" w.b. w/o sound control HK4
	4117 456	1	D1-2-3,W1-2	1980-81
	4115 411	1	D,W1	133" w.b. w/o sound control (HK4), crew cab
	4117 457	1	D,W1	1980-81
	4115 412	1	D,W1-2	149" w.b. w/o sound control (HK4), crew cab
	4117 458	1	D,W1-2	1980
	4112 863	1	D3,W2	w/ crew cab
	4164 138	1	D3	135,159 w.b. 1980-81
	4112 863	1	W3	All
	4164 138	1	D4,W2-3	All 1980-81
	4115 414	1	D,W1-2	115" w.b. (149" w.b. w/ crew cab) w/ sound control HK4
	4115 416	1	D,W1	133" w.b. w/ crew cab w/ sound control HK4
	4115 417	1	D,W1-2	149" w.b. w/ crew cab w/ sound control HK4
9	2465 391	1	D-W	GASKET, Exh. Pipe
10	181 112	AR	D-W	BOLT, 3/8-16x1.00
	152 346	4	D-W	NUT, Exh. Pipe To Manif. Flange Stud
11	181 063	AR	D-W	BOLT, 1/4-20x.75
12	3466 984	1	D-W	SUPPORT, Exh. Pipe Crew Cab
13		1	D-W	BRACKET
14	6025 020	AR	D-W	NUT, 3/8-16
15	6025 004	2	D-W	NUT, 1/4-20
16	181 098	2	D-W	SCREW, 5/16-18-2.25
17	1946 639	1	D-W	FLANGE, Cat. Conv.
	1946 648	AR	D-W	NUT, 3/8-16x1-3/8
	6023 187	2		Scr. & Wa. Exh. pipe to interm. pipe flange
18	4030 570	1	D1	CATALYTIC CONVERTOR 1978
	4115 385	1	D1-2	1979
	4117 420	1	D1-2	1980
	4117 420	1	D1-2	w/ Lite Duty Cycle w/o Emission Reduc. System 1981
	4213 147	1	D1	w/ Med. Duty Cycle 1980
	4218 020	1	D1	w/ Emission Reduction System 1981
	4089 464	1	W1	1978

LIGHT	A = All Sport Utility (Ramcharger).	B = All Compact Models.	D = Conventional Cab.
DUTY	AD = 2 Wheel Drive Only (Ramcharger).	CB-MB = Compact Front Section Only.	W = Conventional Cab 4 Wheel Drive.
CODES:	AW = 4 Wheel Drive Only (Ramcharger).	P = Forward Control Chassis.	M = Motor Home.

MEDIUM-HEAVY CODES: XNT = Low Cab Forward. D = Conventional Cab. S = School Bus. W = 4-Wheel Drive.

AR=Use as Required

= New Part Number

Printed in U.S.A.

June, 1982

ITEM	PART NUMBER	QTY	MODEL	DESCRIPTION
EXHAUST SYSTEM-6 CYLINDER D-W				
	4115 390	1	W1	1979
	4117 422	1	W1	1980-81
	4089 463	1	D1-2	225 Eng. (Effective 9-10-77)
19	4004 384	1	D1-2-W1	SHIELD, Converter Lower 1978-79
	4004 384	1	D1-2	1980-81
	4164 960	1	W1	1980-81
	4004 385	1	D2	Crew Cab w/Lite Duty Cycle 1979
	4004 385	1	D1-2	1981
	4032 958	1	W1-2,AW1	1978
	4004 050	1	D1 2-W1	U-BOLT, Converter Frt.
	4004 049	1	D1-2-W1	Rear
20	3827 818	1	D	SHIELD, Heat Frt. Upper
	4117 464	1	D	1980-81
	3897 988	1	W	SHIELD, Heat Frt. Upper 1978-79
	4164 778	1	W1	w/Light Duty Cycle 1980
	4164 778	1	W2-3	w/Heavy Duty Cycle 1980
	4164 778	1	W1-2-3	w/All Trans. 1981
21	3879 927	1	D-W	SHIELD, Muffler Upper 1978
	4115 423	1	D-W	1979-80
22	3879 927	1	W	SHIELD, Heat Frt. Upper 1978
23	4026 834	1		SHIELD, Heat Lower 1978
24	3898 746	1		EXTENSION, Tail Pipe 1978

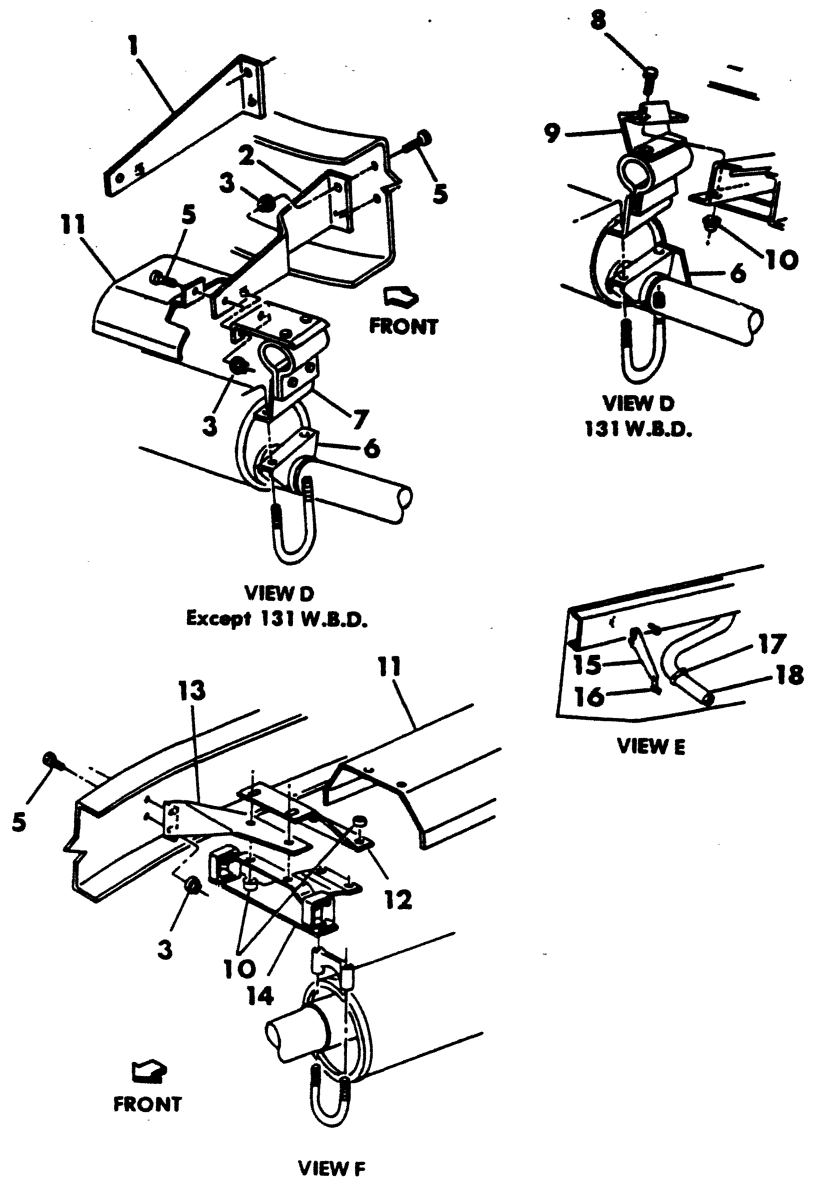
FOLLOWING ITEMS NOT SHOWN

6031 148	1		PLUG, mini-ox
4004 818	1	D1	SHIELD, Heat Mini-Ox Upr. and Lwr. 1980-81
4210 759	1	D1	SUPPORT, Exh. Pipe Frt. w/Med Duty Cycle w/Man. Trans. 1980-81
4210 760	1	D1	w/Med. Duty Cycle W/Auto. Trans. 1980-81
6025 004	4		NUT Cata. Conv. Lwr. Ht. Shield U-Bolt 1979-80

LIGHT	A = All Sport Utility (Ramcharger).	B = All Compact Models.	D = Conventional Cab.
DUTY	AD = 2 Wheel Drive Only (Ramcharger).	CB-MB = Compact Front Section Only.	W = Conventional Cab 4 Wheel Drive.
CODES:	AW = 4 Wheel Drive Only (Ramcharger).	P = Forward Control Chassis.	M = Motor Home.
MEDIUM-HEAVY CODES: XNT = Low Cab Forward. D = Conventional Cab. S = School Bus. W = 4-Wheel Drive.			
AR=Use as Required	# = New Part Number	Printed in U.S.A.	June, 1982

EXHAUST SYSTEM - (CONT) 6 CYLINDER D - W

8311 450B



ITEM	PART NUMBER	QTY	MODEL	DESCRIPTION
EXHAUST SYSTEM - (CONT) 6 CYLINDER				
D - W				
1	3820 054	1		SUPPORT, Muffler w/ 149" W.B. Club Cab 1978-79
2	4030 907	1		SUPPORT, Muffler except 149" W.B. Club Cab 1978-79
	4030 907	1		All (Up To 2-1-80)
	4213 334	1		(After 2-1-80)
3	6025 020	AR		NUT (3/8 - 16)
5	181 112	AR		BOLT (3/8 - 16 x 1.00)
6	1843 009	AR		CLAMP Assy 1 5/16"
	1603 364	AR		2" 1979-80
	4004 959	AR		2" 1981
	4004 525	AR		2 1/4"
	1843 008	AR		2 1/8"
	1643 365	AR		2 5/8"
7	4030 398	1		INSULATOR Up To 4-2-79
	4164 253	1		(From 2-1-80)
	4213 335	1		(After 2-1-80)
8	1510 365	AR	D	BOLT (5/16 - 18 x .75)
9	4031 250	1	D	INSULATOR w/ 131" W.B. 1978
	4164 253	1	D	All W.B. 1979
10	118 614	1	D	NUT (5/16 - 18)
11	3879 927	1		SHIELD, Muffler Upper 1978
	4115 423	1		1979-80
12	3893 782	1		SUPPORT, Heat Shield
13	3823 394	1		BRACKET 1978
	4112 636	1	W1-2	1979-80-81
	4112 635	1	D1-2-3	1979-80-81
14	3827 440	1		INSULATOR 1978
	4115 424	1		1979-80-81
15	4167 427	1		SUPPORT, Tail Pipe
16	3822 558	1		INSULATOR, Tail Pipe
17	2240 311	1		CLAMP Rear Suppt. 1 3/4 Dia. 1978-79
	2240 312	1		CLAMP Pkg. 2" Dia.
	3466 652	1		CLAMP, Tail Pipe w/Sound Control (HK4) 1978
18	3898 746	1		EXTENSION, Tail Pipe 1978-79

LIGHT	A = All Sport Utility (Ramcharger).	B = All Compact Models.	D = Conventional Cab.
DUTY	AD = 2 Wheel Drive Only (Ramcharger).	CB-MB = Compact Front Section Only.	W = Conventional Cab 4 Wheel Drive.
CODES:	AW = 4 Wheel Drive Only (Ramcharger).	P = Forward Control Chassis.	M = Motor Home.

MEDIUM-HEAVY CODES: XNT = Low Cab Forward. D = Conventional Cab. S = School Bus. W = 4-Wheel Drive.

AR=Use as Required

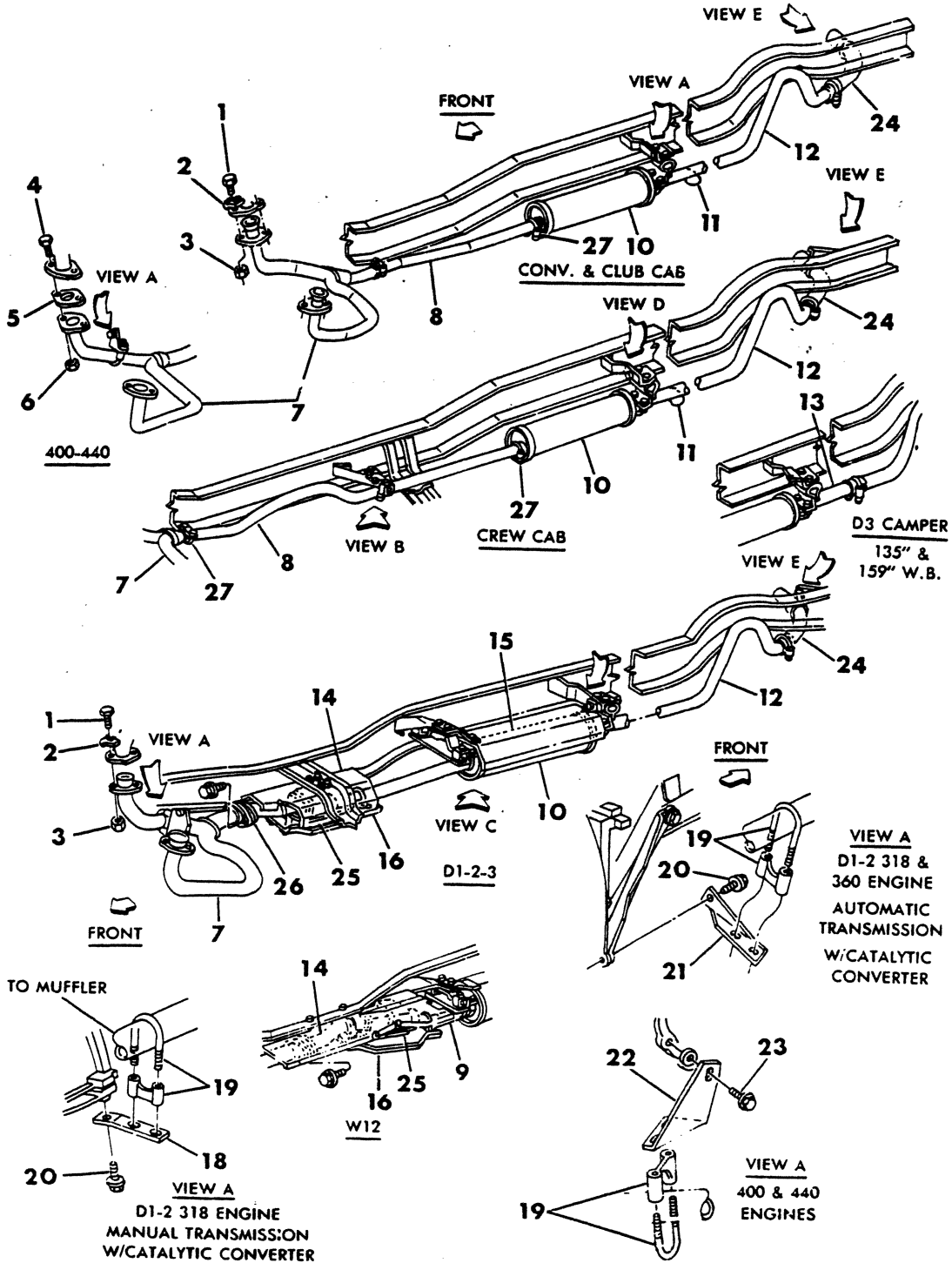
=New Part Number

Printed in U.S.A.

June, 1982

EXHAUST SYSTEM D - W LIGHT DUTY 8 CYLINDER

8311 500C



ITEM	PART NUMBER	QTY	MODEL	DESCRIPTION
EXHAUST SYSTEM				
D - W LIGHT DUTY 8 CYLINDER				
1	181 127	4		BOLT 3/8 - 16 X 2.25
2	4004 001	4		RETAINER
3	152 344	4		NUT, Lock 3/8 - 16
4	9426 559	4		BOLT, 7/16 - 14 x 1.62
5	2465 391	2		GASKET
6	152 346	4		NUT, Lock 7/16 - 14
	6031 210	1	D1	STUD, Exh. Pipe Flange w/318 Eng.
7				PIPE, Exh. Front
	3828 907	1	W	318-360 Eng. w/o Cata. Conv. W/o Flange 1978
	3898 904	1	D,W	W/Flange 1979
	3828 908	1	D,RD	318-360 Eng. Hvy. Dty. Cycle eng. w/o Cata. Conv. w/o Flange 1978
	3898 904	1	D-RD2	318 -360 w/ Cata. Conv. w/Flange 1978-79
	4117 410	1	D-RD2	Up To 11-12-79
	4116 541	1	D1-2	318,360 Eng. w/Mini Ox Aft 11-12-79
	3898 905	1	W	318 - 360 w/ Cata. Conv. w/Flange 1978
	3898 905	1	W	ALL w/Flange 1979
	4117 411	1	W,AW1	318-1, 360 Eng. 1980
	4117 411	1	W1	318-2 Eng. (Up To 11-12-79)
	4167 393	1	W1	(After 11-12-79)
	4167 393	1	W1-2	318,360 Eng. w/Emission Reduc. System 1981
	4030 576	1	D	400 Eng.
	3823 800	1	W	400 Eng.
	3735 291	1	D	440 Eng. w/o Cata. Conv.
	4037 290	1	D	440 Eng. w/ Cata. Conv.
	3735 291	1	D3-4	440 Eng.
	3823 784	1	W	440 Eng. w/o Cata. Conv.
	4037 292	1	W	440 Eng. w/ Cata. Conv.
8				PIPE, Exh. Rear
	4030 574	1	D4-RD2	360 Eng. w/o Sound Control (HK4) 1978
	4030 574	1	D3-4	318, 360 Exc. Crew Cab w/o HK4 (Sound Control) 1978
	4031 380	1	D-RD2	318,360 Eng. w/Sound Control (HK4) 1978
	4030 575	1	D	318, 360 w/ Crew Cab w/o HK4 (Sound Control) 1978
	4031 381	1	D	w/ HK4 (Sound Control) 1978
	3823 792	1	W	318, 360 Eng. 149" W.B. Crew Cab 1978
	3823 791	1	W	318, 360,400,440Eng. Conv. or Club Cab 1978
	4037 299	1	D	318, 360, 400, 440 Eng. Crew Cab w/ Cata Converter 1978
	4037 299	1	RD	360 Eng. Crew Cab 1978
	3898 819	1	D	400, 440 Eng. exc. Crew Cab w/o Cata. Conv. 1978
	3898 819	1	D4	440 Eng. 1978
	3898 825	1	D	400, 440 Eng. Crew Cab w/o Cata. Conv. 1978
	4115 401	1	D1	318-360 Eng. w/Heavy Duty Cycle 1979
	4117 433	1	D1	1980
	4117 433	1	D1-2-3-4	318,360 Eng. w/o Heavy Duty Cycle 1981
	4115 401	1	D1	318-2 Eng. 1979
	4117 433	1	D1	1980
	4117 433	1	RD2	360-4 Eng. w/o Heavy Duty Cycle 1981
	4115 401	1	RD2-D2,3	318-360 Eng. w/Hvy. Duty Cycle w/o Crew Cab 1979
	4117 433	1	RD2-D2,3	1980
	4115 401	1	D4	ALL 1979

LIGHT	A = All Sport Utility (Ramcharger).	B = All Compact Models.	D = Conventional Cab.
DUTY	AD = 2 Wheel Drive Only (Ramcharger).	CB-MB = Compact Front Section Only.	W = Conventional Cab 4 Wheel Drive.
CODES:	AW = 4 Wheel Drive Only (Ramcharger).	P = Forward Control Chassis.	M = Motor Home.

MEDIUM-HEAVY CODES: XNT = Low Cab Forward. D = Conventional Cab. S = School Bus. W = 4-Wheel Drive.

AR=Use as Required

#=New Part Number

Printed in U.S.A.

June, 1982

1978-81 LIGHT DUTY TRUCK PARTS CATALOG

EXHAUST

ITEM	PART NUMBER	QTY	MODEL	DESCRIPTION
EXHAUST SYSTEM				
D - W LIGHT DUTY 8 CYLINDER				
	4117 433	1	D4	ALL 1980
	4115 405	1	D-W-RD2,3	318,360 Eng. Crew Cab 1979
	4117 435	1	D-W-RD2,3	w/Heavy Duty Cycle 1980-81
	4115 404	1	W	PIPE, Exh. Intern. w/o Crew Cab (not shown) 1979
	4117 434	1	W	w/Heavy Duty Cycle 1980
	4117 434	1	W	w/o Heavy Duty Cycle 1981
	4115 862	1	W2	PIPE, exh. intern. w/ crew cab (not shown) 1979
	4117 437	1	W2	1980-81
	4115 866	1	D-RD2	PIPE, Exh. Intern. w/ Crew Cab 1979 (Not Shown)
	4164 139	1	D2-3,RD2	1980-81
9				PIPE, Exh. Rear
	3823 885	1	W1-2	400, 440 Eng. Except Crew Cab 1978
	3823 885	1	W1-2-3-4	318,360 Eng. 1979
	4117 438	1	W1-2-3-4	318,360 Eng. 1980-81
	4039 354	1	W1-2	400, 440 Eng. Crew Cab
10				MUFFLER
	4036 879	1	D3-4, RD2	318, 360 Eng. w/o HK4 (Sound Control) 1978
	4036 879	1	D1-2-3	318, 360 Eng. w/ Hvy. Dty. Cycle Eng. 1978
	4036 881	1	D3	318, 360 Eng. w/ HK4 (Sound Control) 1978
	4036 881	1	D1-2	318, 360 Eng. w/ Cata. Conv. 1978
	4036 881	1	W1-2	318, 360 Eng. 1978
	4036 881	1	W3-4	318, 360 Eng. w/o Sound Control (HK4) 1978
	3898 618	1	W1-2-3	318, 360 Eng. 1978
	4036 882	1	D - W	400, 440 Eng. 1978
	4115 294	1	D	360, Hi. Performance 1978-79-80
	4115 382	1	D-W	318 Eng. 1979
	4112 524	1	D-W	All Trans. w/o Sound Cont. 1980
	4115 384	1	D-W	360 Eng. 1979
	4112 525	1	D,W,RD2	All Trans. w/Sound Cont. 1980
	4112 525	1	D,W,RD2	All Trans. w/o Sound Cont. 1981
11				PIPE, Tail w/o Camper (Short Pipe) 1978
	3820 070	1	D,W	360 Eng. 1-1-78
	4115 634	1	D4,W3-4	318,360 eng. Crew Cab 1-1-78
	4115 634	1	W2	318 Eng. w/o Camper Pkg. 1978
	4115 634	1	W2-3	318-360 Eng. 135,159,165 W.B Exc. Camper Pkg. 1979
	4112 863	1	D3-W2	318-360 Eng. 135,159 W.b 1980-81
	4164 138	1	D3	318,360 Eng. 1979
	4112 863	1	W3	ALL 1979
	4112 863	1	D4,W4	ALL 1980-81
	4164 138	1	D4,W2-3-4	PIPE, Tail
12				PIPE, Tail
	3898 466	1	D1-W1	115" W.B. 318,360 Eng. 1978
	3898 466	1	D2-W2	149" W.B. 318,360 Eng. w/ Crew Cab 1978
	3898 470	1	D1-2-3 W1-2	131" W.B. 318,360 Eng. 1978
	3898 470	1	D1-W1	133" W.B. 318,360 Eng. 1978
	3898 470	1	D2-3	165" W.B. 318, 360 Eng. w/ Camper Pkg. 1978
	3898 472	1	D1-2-3 W1-2	149" W.B. 318, 360 Eng. Club Cab 1978
	3898 470	1	D3	165" W.B. 318, 360 Eng. Crew Cab w/ Camper 1978
	3898 478	1	D1-W1	115" W.B. 400, 440 Eng.
	3898 478	1	D2-W2	149" W.B. 400, 440 Eng. Crew Cab

LIGHT	A = All Sport Utility (Ramcharger).	B = All Compact Models.	D = Conventional Cab.
DUTY	AD = 2 Wheel Drive Only (Ramcharger).	CB-MB = Compact Front Section Only.	W = Conventional Cab 4 Wheel Drive.
CODES:	AW = 4 Wheel Drive Only (Ramcharger).	P = Forward Control Chassis.	M = Motor Home.

MEDIUM-HEAVY CODES: XNT = Low Cab Forward. D = Conventional Cab. S = School Bus. W = 4-Wheel Drive.

AR=Use as Required

=New Part Number

Printed in U.S.A.

June, 1982

EXHAUST

1978-81 LIGHT DUTY TRUCK PARTS CATALOG

ITEM	PART NUMBER	QTY	MODEL	DESCRIPTION
EXHAUST SYSTEM				
D - W LIGHT DUTY 8 CYLINDER				
	3898 482	1	D1-2-3 W1-2	131" W.B. 400, 440 Eng.
	3898 482	1	D2-3	165" W.B. 400, 440 Eng. (D3 w/ Camper)
	3898 482	1	W2	131" W.B. 400, 440 Eng. w/ Camper Pkg.
	3898 484	1	D1-2 W1-2	149" W.B. 400, 440 Eng. Club Cab
	3898 484	1	D3	149" W.B. 400, 440 Eng.
	3898 282	1	D3	135", 159", 165" W.B. 400,440 Eng. exc Camper Pkg.
	3898 282	1	W2	w/ Club Cab. 400,440 Eng.
	3898 282	1	W3-4	ALL
	4115 299	2	D1	Pipe, Muffler tail Rear 360 Hi. Performance 1979-80
	4115 414	1	D,W1	318,360 Eng. 115" W.B. 1979
	4117 460	1	D,W1	1980-81
	4115 414	1	D,W2	318,360 Eng. 149" W.B. Crew Cab 1979
	4117 460	1	D,W2,RD2	1980-81
	4115 415	1	D,W1-2-3	318,360 Eng. 131" W.B. 1979
	4117 461	1	D,W1,2,3,RD2	1980-81
	4115 415	1	D2	318,360 Eng. 165" W.B. 1979
	4117 461	1		1980-81
	4115 415	1	D3	318,360 Eng. 165" W.B. w/ Trailer Tow. Pkg. 1979
	4117 461	1		1980
	4115 415	1	D3	360 Eng. 135", 159" w.b. w/ Trailer Tow Pkg. 1979
	4117 461	1		1980
	4115 416	1	D,W1	318,360 Eng. 133" W.B.
	4117 462	1		1980-81
	4115 417	1	D,W1-2	318,360 Eng. 149" W.B. Club Cab
	4117 463	1	D1-2-3,W1-2	1980-81
13				EXTENSION, Tail Pipe
	3898 474	1	D,W	135" W.B. 318, 360 Eng. 1978-79
	4164 171	1	D3	135" W.B. 318, 360 Eng. w/9000# Camper Pkg. 1980
	3898 476	1	D,W	159" W.B. 318, 360 Eng. 1978-79
	4164 172	1	D3	159" W.B. 318, 360 Eng. w/9000# Camper Pkg. 1980
	3898 486	1	D,W	135" W.B. 400, 440 Eng. 1978
	3898 488	1	D-W	159" W.B. 400, 440 Eng. 1978
	4039 359	1	RD	318, 360 Eng. 1978-79
	4164 307	1	RD2	1980-81
14	3827 818	1	D	SHIELD, Cata. Conv. Heat Front Upper 1978-79
	4117 464	1	D,RD2	1980-81
	3897 988	1	W	Upper 1978-79
	4164 778	1		1980-81
15	3879 927	1	D-W	SHIELD, Muffler Heat Upper 1978
	4115 423	1	D-W	1979-80
	4213 336	1	D-W	1981
16	4004 385	1	D	SHIELD, Cata. Conv. Heat Lower
	4150 151	1	D2	318,360-4 w/Heavy Duty Cycle 1980
	4150 151	1	D1-2	318,360-4 Eng. w/Emission Reduc. Sys. w/Lite Duty Cycle 1981
	4150 151	1	D3-4,RD2	318-2, 360-4 1980
	4032 959	1	W	Lower 1980-81
	4032 959	1	W2	318,360 Eng. w/Light Duty Cycle 1980
	4032 959	1	W1	318,360 Eng. w/Aspirator 1981
	4150 151	1	W2-3-4	318,360 Eng. w/Heavy Duty Cycle 1980-81

LIGHT A = All Sport Utility (Ramcharger). B = All Compact Models. D = Conventional Cab.
DUTY AD = 2 Wheel Drive Only (Ramcharger). CB-MB = Compact Front Section Only. W = Conventional Cab 4 Wheel Drive.
CODES: AW = 4 Wheel Drive Only (Ramcharger). P = Forward Control Chassis. M = Motor Home.

MEDIUM-HEAVY CODES: XNT = Low Cab Forward. D = Conventional Cab. S = School Bus. W = 4-Wheel Drive.

AR=Use as Required

=New Part Number

Printed in U.S.A.

June, 1982

1978-81 LIGHT DUTY TRUCK PARTS CATALOG

EXHAUST

ITEM	PART NUMBER	QTY	MODEL	DESCRIPTION
EXHAUST SYSTEM				
D - W LIGHT DUTY 8 CYLINDER				
	4150 151	1	W1	318 Eng. w/Heavy Duty Cycle 1980-81
	4150 151	1	D1-2	318 Eng. w/Air Pump 1980-81
	4004 050	2		U-BOLT, Cata. Conv. Lwr. Ht. Shield w/Light Duty Cycle 1980-81
	4150 155	2		w/Heavy Duty Cycle 1980-81
17	4026 834	1	D-W	SHIELD, Muffler Heat Lower 1978
	4115 295	1	D1	SHIELD, Muffler Heat 360 Hi. Performance Eng. 1979
18	3898 272	1	D	BRACKET, Exh. Pipe Except w/ A 833 Trans. 1978
	4032 413	1	D	w/ A 833 Trans. 1978
	4032 413	1	D-AD	318-360 Eng. w/Cat. Converter 1979-80-81
19				CLAMP Pkg.
	1843 009	AR		1 - 15/16"
	1603 364	AR		2"
	1843 008	AR		2 - 1/8"
	1603 365	AR		2 - 5/8"
20	6022 245	AR		SCREW (5/16 - 18 x 1.50) Man. Trans.
	6029 735	AR		(7/16 - 14 x 1.25) Auto Trans.
21	3898 273	1	D-W	BRACKET, Exh Pipe Auto Trans.
	3898 273	1	RD	318,360 Eng. 1980-81
22	3735 294	1	D	BRACKET, Exh Pipe 400, 440 Eng.
	4039 350	1	W	400, 440 Eng.
23	6026 550	1	D-W	SCREW Assy. (7/16 - 14 x 2.25)
24	3898 746	1	D-W	EXTENSION, Tail Pipe 318 Eng. 1978-79
	4164 134	1		1980-81
	3898 748	1	D-W	360, 400, 440 Eng. (318 w/ sound control) 1978-79
	4164 136	1		360-2,360-4 Eng. 1980-81
	4039 359	1	RD	Extension, Tail Pipe 1978-79
25	4030 354	1	W1	Conv. & Pipe Assy. 360 Eng. w/o Calif. Emissions 1978
	4030 571	1	D1-2	440 eng. 1978
	4030 571	1	D1,2	318,360-2 Eng. 1978
	4115 865	1	D2	1979
	4164 312	1	D2,RD2	318-2,360-4 Eng. w/Heavy Duty Cycle Crew Cab 1980-81
	4164 312	1	D3	360-4 Eng. 1981
	4030 571	1	D1	318,360-2 eng. w/calif. emmission 1978
	4030 353	1	D1	360-2 eng. w/o calif. emmission 1978
	4115 386	1	D1	318,360-2 Eng. 1979
	4117 424	1		1980-81
	4115 386	1	D2	318,360-2 Eng. w/o Crew Cab 1979
	4117 424	1		1980-81
	4115 386	1	D1	318-2 eng. w/ light duty cycle and calif. emmission 1979
	4115 387	1	D1-2	360-4 Eng. 1979
	4117 427	1		1980
	4117 427	1	D1-2	318 Eng. (Up To 11-12-79)
	4210 924	1	D1-2	(After 11-12-79)
	4210 924	1	D1-2	318,360-4 Eng. w/Emission Reduc. Sys. w/Lite Duty Cycle 1981
	4115 387	1	D1-2	318-2 Eng. w/Heavy Duty Cycle Eng. 1979
	4117 427	1		1980
	4115 387	1	D2	318-2 eng. 1979
	4115 861	1	W2	318,360 Eng. w/Crew Cab 1979
	4164 313	1		1980-81

LIGHT A = All Sport Utility (Ramcharger). B = All Compact Models. D = Conventional Cab.
DUTY AD = 2 Wheel Drive Only (Ramcharger). CB-MB = Compact Front Section Only. W = Conventional Cab 4 Wheel Drive.
CODES: AW = 4 Wheel Drive Only (Ramcharger). P = Forward Control Chassis. M = Motor Home.

MEDIUM-HEAVY CODES: XNT = Low Cab Forward. D = Conventional Cab. S = School Bus. W = 4-Wheel Drive.

AR=Use as Required

=New Part Number

Printed in U.S.A.

June, 1982

ITEM	PART NUMBER	QTY	MODEL	DESCRIPTION
EXHAUST SYSTEM				
D - W LIGHT DUTY 8 CYLINDER				
	4115 865	1	D2	318,360 Eng. w/Light Duty Eng. and Crew Cab 1979
	4164 218	1		318-2,360-4 Eng. w/Heavy Duty Cycle Except Crew Cab 1980-81
	3894 202	1	W1-2	318,360,440 Eng. 1978
	4115 388	1	W1-2	1979
	4116 549	1	W1-2,AW1	360 Eng. 1980
	4116 549	1	W1	318 Eng. (Up to 11-12-79)
	4210 925	1	W1	(After 11-12-79)
	4210 925	1	W1-2	318-2,360-4 Eng. w/Lite Duty Cyc. w/Emission Reduc. System 1981
	4116 549	1	W1-2	318-1 Eng. w/Aspirator 318-2,360-4 Eng. w/Lite Duty Cyc. 1981
	4164 219	1	W2-3-4	318-360 Eng. w/Heavy Duty Cycle 1980-81
	4164 219	1	W1-2	318 Eng. w/Air Pump 1980-81
	4030 353	1	D1	360 Eng. w/o Calif. Emissions 1978
	4164 218	1	D1-2	318 Eng. w/Air Pump 1980-81
	4164 218	1	D3-4	360-4 Eng. W/Heavy Duty Cycle 1980
	4164 218	1	D2-3	318 Eng. w/Heavy Duty Cycle 1980
	4164 218	1	D2	318-2,360-4 Eng. w/Heavy Duty Cycle 1981
	4164 218	1	RD2	318,360 Eng. w/Heavy Duty Cycle 1980-81
	4164 218	1	D2-4	360-4 Eng. w/Emission Reduction Sys. 1980
26	1946 639	1	D-W-RD	Flange, Interm Exh Pipe 1978-79
	1946 648	2	D-W	Nut, interm exh pipe
	6023 187	2	D-W	Scr. & washer exh pipe to interm pipe flange
27	4004 445	2	D-W	C;amp, Rr. exh pipe

FOLLOWING ITEMS NOT SHOWN

4088 798		D	SHIELD, Mini-Ox Conv. Heat 1979-80-81
4088 794	1	D	CONVERTOR & PIPE, Mini-Ox 1979
4116 541	1	D	318-2 Eng. 1980
4140 720	1	D3-4	SHIELD, Exh. Pipe Starter Mtr. Ht. w/360-4 Eng. 1981

LIGHT	A = All Sport Utility (Ramcharger).	B = All Compact Models.	D = Conventional Cab.
DUTY	AD = 2 Wheel Drive Only (Ramcharger).	CB-MB = Compact Front Section Only.	W = Conventional Cab 4 Wheel Drive.
CODES:	AW = 4 Wheel Drive Only (Ramcharger).	P = Forward Control Chassis.	M = Motor Home.

MEDIUM-HEAVY CODES: XNT = Low Cab Forward. D = Conventional Cab. S = School Bus. W = 4-Wheel Drive.

AR=Use as Required

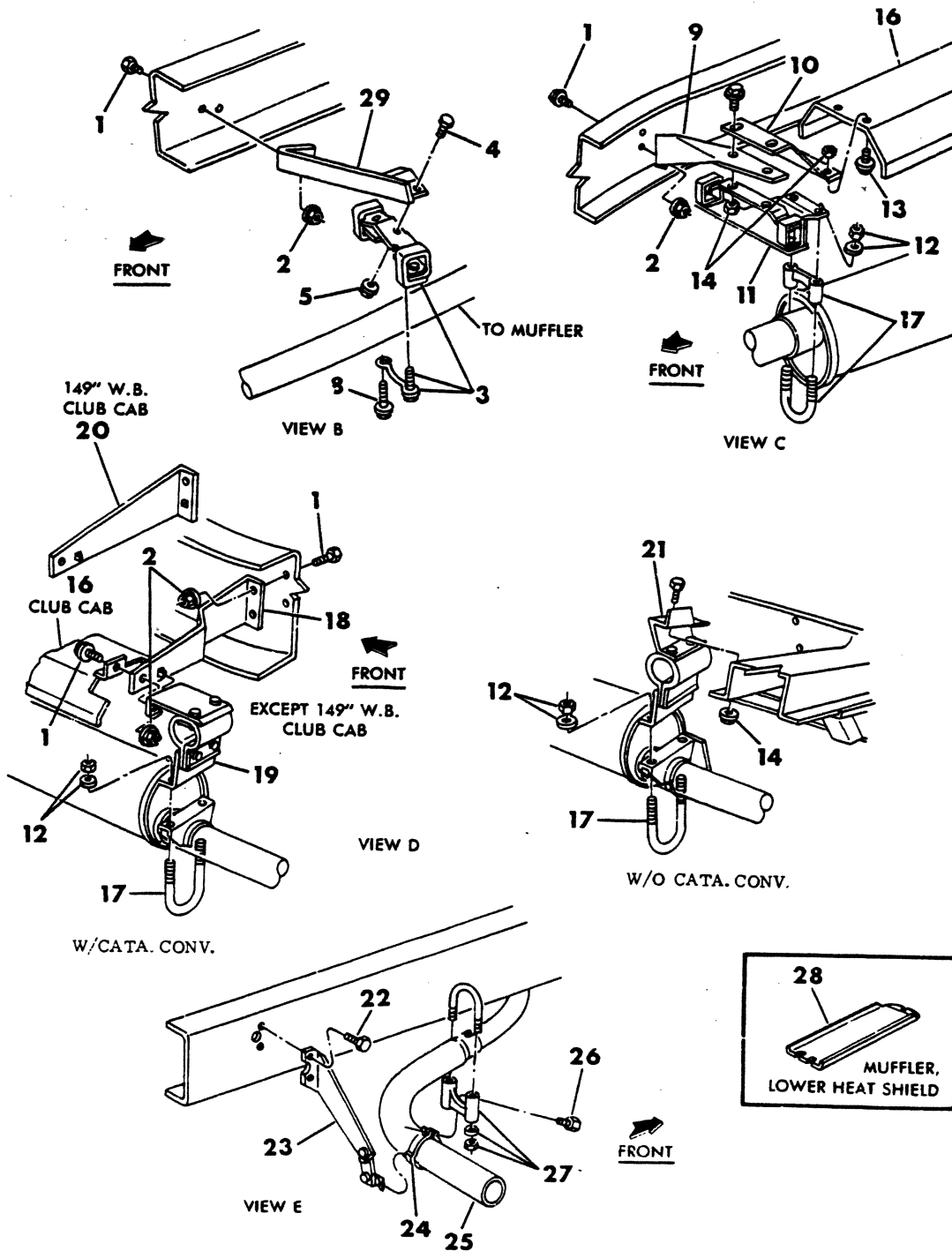
=New Part Number

Printed in U.S.A.

June, 1982

EXHAUST SYSTEM - EXHAUST PIPE HANGER 8 CYLINDER D - W

8311 525B



ITEM	PART NUMBER	QTY	MODEL	DESCRIPTION
EXHAUST SYSTEM - EXHAUST PIPE HANGER 8 CYLINDER D - W				
1	181 112	2		BOLT (3/8 - 16 x 1.00)
2	6025 020	2		NUT (3/8 - 16)
3	3466 646	1		BRACKET, Exh Fr. Crew Cab
4	181 063	2		BOLT (1/4 - 20 x 3/4)
5	6025 004	2		NUT (1/4 - 20)
8	6022 243	AR		SCREW Assy (5/16 - 18 x 1.25)
9	3823 394	1		BRACKET, Muffler & Exh. Pipe 1978
	4112 635	1	D,RD	1979-80-81
	4112 636	1	W	1979-80-81
10	3893 782	1		SUPPORT, Heat Shield 1978
11	3823 886	1		INSULATOR Assy. 1978
	4115 424	1	D,W,RD	1979-80-81
12		2		NUT, Lock (5/16 - 18)
13	181 086	2		BOLT (5/16 - 18 x .50)
14	118 614	2		NUT. (5/16 - 18)
16	3879 927	1		SHIELD, Muffler Heat Upper 1978
17	1843 009	AR		CLAMP Pkg. 1 5/16"
	1603 364	AR		2"
	1843 008	AR		2 1/8"
	1603 365	AR		2 5/8"
	4004 525	AR		Clamp, Muffler and Tailpipe 2 1/4"
18	4030 907	1		BRACKET, Except 149" W.B. Club Cab 1978-79
	4030 907	1	D,W,RD	ALL 1980
	4213 334	1		ALL 1981
19	4030 398	1		INSULATOR Assy Up to 4-2-79
	4164-253	1		From 2-1-80
	4213 335	1		After 2-1-80
20	3820 054	1		BRACKET w/ 149" W.B. Club Cab 1978
21	4031 250	1		INSULATOR Assy 1978
	4112 652	1		1979
22	181 088	1		SCREW (5/16 - 18 x 1/2)
23	4167 427	1	D-W	SUPPORT, Tail Pipe Ext.
	4039 360	1	RD	SUPPORT, And Insulator Tail Pipe 1979
	4167 428	1	RD2	1980-81
	4167 426	1	RD2	BRACKET, Tail Pipe Insul. Clamp 1980-81
24	3466 652	1		CLAMP 318 Eng.
	4004 237	1		360,400,440 Eng.
	4004 525	1		318,360 Eng.
	4004 237	1		360-2,360-4 Eng. 1980-81
	2585 698	1	RD2	ALL 1980-81
25	3898 746	1		EXTENSION, Tail Pipe 318 Eng. 1978-79
	3898 748	1		360,400,440 Eng. 1978-79
	4039 359	1	RD	ALL 1978-79
26		1		SCREW (1/4 - 20 x 1.25)
27	4004 445	1		CLAMP Assy. 2 1/2" Dia.
	4004 525	1		CLAMP, Assy Muffler And Tail Pipe 2 1/4" Dia.
	4004 525	1	D3	318,360 Eng. w/135,159 W.B. w/Camper 9000# Pkg.1980
28	4029 834	1		SHIELD, Muffler Lower 1978
29	3820 058	1		Supt, Exh. pipe Fr. w/ crew cab

LIGHT A = All Sport Utility (Ramcharger).

B = All Compact Models.

D = Conventional Cab.

DUTY AD = 2 Wheel Drive Only (Ramcharger).

CB-MB = Compact Front Section Only.

W = Conventional Cab 4 Wheel Drive.

CODES: AW = 4 Wheel Drive Only (Ramcharger).

P = Forward Control Chassis.

M = Motor Home.

MEDIUM-HEAVY CODES: XNT = Low Cab Forward. D = Conventional Cab. S = School Bus. W = 4-Wheel Drive.

AR=Use as Required

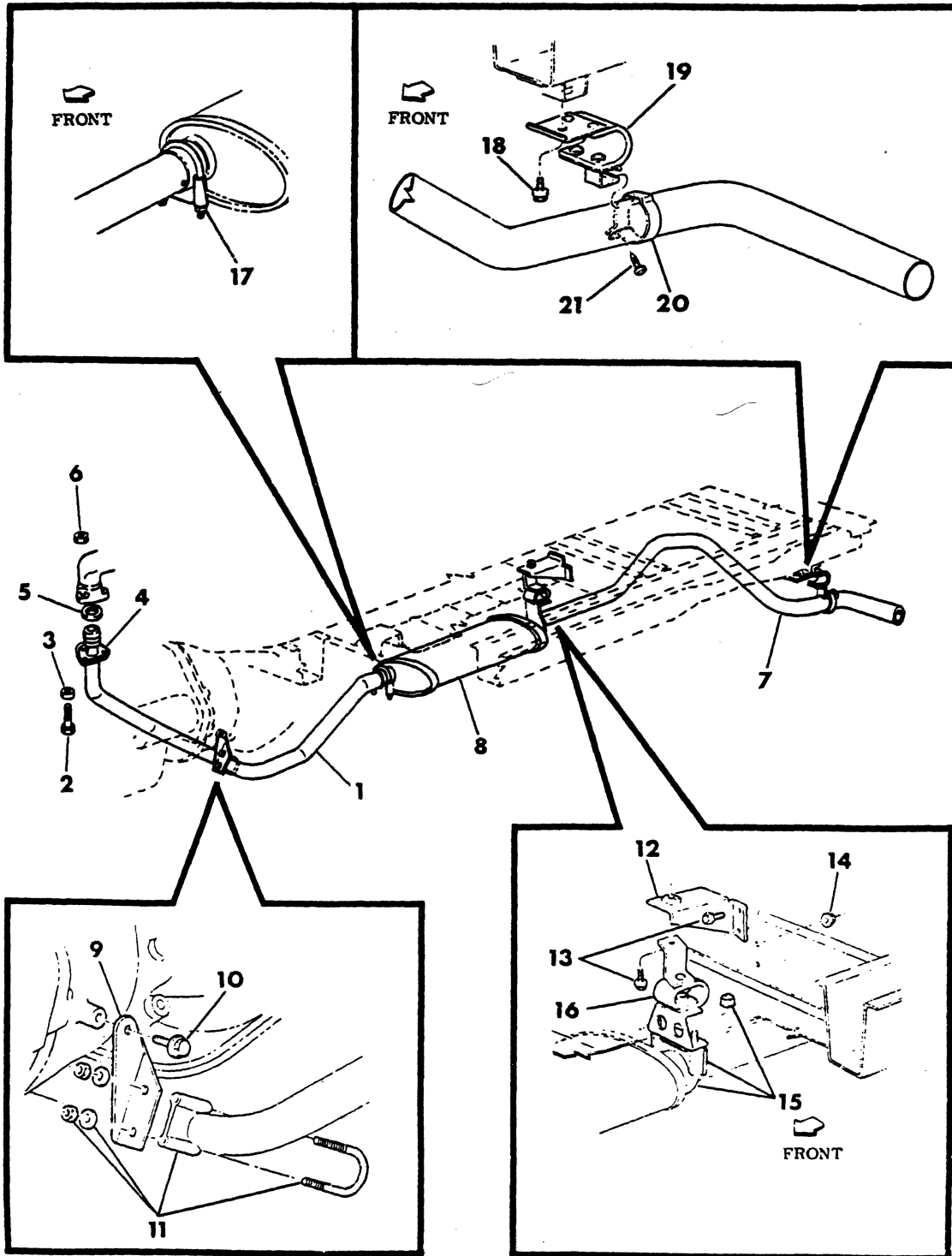
= New Part Number

Printed in U.S.A.

June, 1982

EXHAUST SYSTEM B1-2-3 DIESEL ENGINE-1979

8311 550A



ITEM	PART NUMBER	QTY	MODEL	DESCRIPTION
EXHAUST SYSTEM				
B1-2-3 DIESEL ENGINE-1979				
1	4036 363	1		PIPE, Exhaust Front
2	181 120	3		BOLT, Exh. Flange (3/8-16x1 3/4)
3	6024 682	3		SPACER, Exh. Pipe Flange
6	152 344	3		NUT, Lock (3/8-16)
7	4117 581	1		PIPE, Tail, w/109" W.B.
	4117 582	1		w/127" W.B.
8	4116 874	1		MUFFLER, Exhaust
10	181 086	1		SCREW (5/16-18x3/4)
11	4004 525	1		CLAMP PKG., Exhaust Pipe (2.25 Dia.)
12	4032 957	1		BRACKET, Muffler Support
13	181 086	2		BOLT (5/16-18x3/4)
14	219 462	2		SCREW (5/16-18x3/4)
16	4112 646	1		INSULATOR, Muffler Support, Rear
18	6022 225	1		SCREW (5/16-18x3/4)
19	3638 334	1		INSULATOR, Tail Pipe Support
20	2585 698	1		CLAMP, Tail Pipe Support
21		1		SCREW (Not Serviced)

LIGHT	A = All Sport Utility (Ramcharger).	B = All Compact Models.	D = Conventional Cab.
DUTY	AD = 2 Wheel Drive Only (Ramcharger).	CB-MB = Compact Front Section Only.	W = Conventional Cab 4 Wheel Drive.
CODES:	AW = 4 Wheel Drive Only (Ramcharger).	P = Forward Control Chassis.	M = Motor Home.

MEDIUM-HEAVY CODES: XNT = Low Cab Forward. D = Conventional Cab. S = School Bus. W = 4-Wheel Drive.

AR=Use as Required

=New Part Number

Printed in U.S.A.

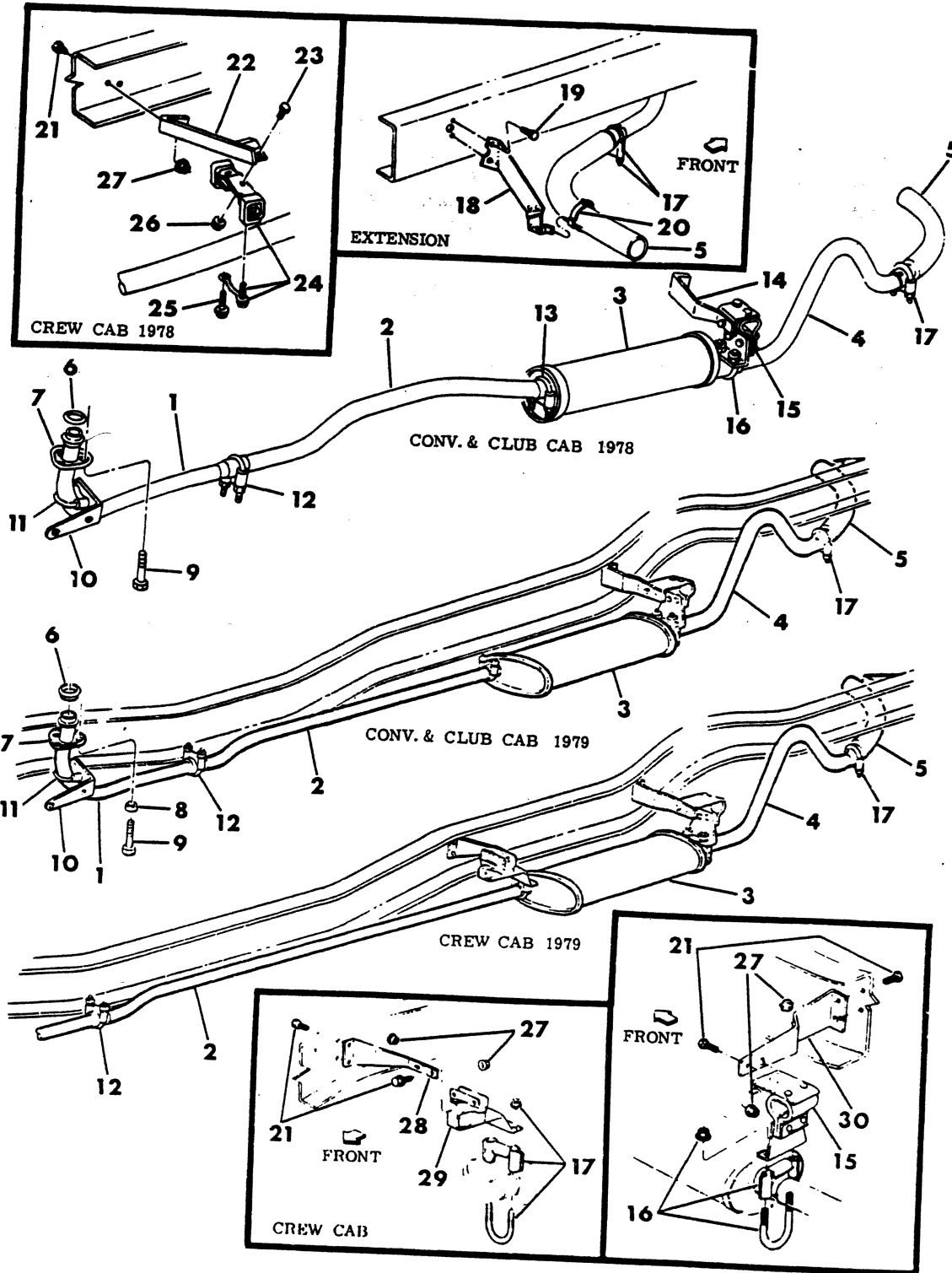
June, 1982

1978-81 LIGHT DUTY TRUCK PARTS CATALOG

EXHAUST

8311 560

EXHAUST SYSTEM D-W1,2 - DIESEL ENGINE



EXHAUST

1978-81 LIGHT DUTY TRUCK PARTS CATALOG

ITEM	PART NUMBER	QTY	MODEL	DESCRIPTION
EXHAUST SYSTEM				
D-W1,2 - DIESEL ENGINE				
1	4089 739	1	D1-2	PIPE, Exhaust, Front, 1978
	4037 999	1	D1-2	1979
	4117 414	1		1980
	4089 738	1	W1-2	1978
	4038 000	1	W1-2	1979
2	4030 574	1	D1-2	PIPE, Exhaust, Rear, Except Crew Cab, 1978
	4115 058	1	D1-2	1979
	4164 304	1		1980
	4030 575	1	D2	Crew Cab, 1978
	4115 059	1	D2	Crew Cab, 1979
	3823 791	1	W1-2	1978
	4115 060	1	W1-2	1979
	4164 306	1		1980
3	4036 881	1	D-W	MUFFLER, Exhaust, 1978
	4116 874	1	D-W	1979
	4112 524	1		1980
4	3898 466	1	D-W1	PIPE, Tail, w/115" W.B., Conv. Cab, 1978
	4115 414	1	D-W1	w/115" W.B., Conv. Cab, 1979
	4115 414	1	D2,W2	w/149" W.B. Crew Cab 1979
	4117 460	1	D1-2,W1	w/115",149" W.B. 1980
	3898 470	1	D-W1	w/131"-133" W.B., Conv. & Club Cab, 1978
	3898 470	1		w/165" W.B., Crew Cab, 1978
	4115 415	1	D1-2	w/131" & 165" Conv. & Crew Cab, 1979
	4115 415	1	W2	w/131" W.B., Conv. Cab, 1979
	4115 416	1	D-W1	w/133" W.B., Club Cab, 1979
	3898 472	1	D1-2, W1	w/149" W.B., Club Cab, 1978
	4115 417	1	D1-2, W1	w/149" W.B., Club Cab, 1979
5	3898 746	1	D-W	EXTENSION, Tail Pipe, 1978-79
	4164 134	1	W	1980
6	4115 450	1	D-W	SEAL, Exhaust Pipe
7	2232 653	1	D-W	FLANGE, Exhaust Pipe
8	6024 682	1	D-W	SPACER, Exhaust Pipe Flange
9	181 120	3	D-W	BOLT, Exhaust Pipe Flange (3/-16x1 3/4)
10	4037 998	1	D-W	SUPPORT, Exhaust Pipe
11	4004 951	1	D-W	CLAMP PKG., Exhaust Pipe Support
12	4004 525	1	D1-2	CLAMP PKG., Front to Rear Exhaust (2 1/4")
	4004 445	1	W1-2	(2.50 Dia.)
13	4004 525	1	D1-2	CLAMP PKG., Muffler, Front (2 1/4")
	4004 445	1	W1-2	(2.50 Dia.)
14	4030 907	1	D-W	SUPPORT, Muffler, Rear, Except 149" W.B. Club Cab, 1978
	4030 907	1	D-W	1980
	3820 054	1	D-W	w/149" W.B. Club Cab,1978
15	4112 650	1	D-W	INSULATOR, Muffler Support, Rear, Except 131"-165" W.B., 1978
	4112 652	1	D-W	w/131"-165" W.B., 1978
	4112 650	1	D-W	1979
	4030 398	1	D-W	INSULATOR, Muffler And Tail Pipe All Up to 4-2-79
	4164 253	1		Aft. 4-2-79
16	4004 525	1	D-W	CLAMP PKG., Muffler, Rear, (2 1/4")
17	4004 445	1	D-W	CLAMP PKG.

LIGHT	A = All Sport Utility (Ramcharger).	B = All Compact Models.	D = Conventional Cab.
DUTY	AD = 2 Wheel Drive Only (Ramcharger).	CB-MB = Compact Front Section Only.	W = Conventional Cab 4 Wheel Drive.
CODES:	AW = 4 Wheel Drive Only (Ramcharger).	P = Forward Control Chassis.	M = Motor Home.

MEDIUM-HEAVY CODES: XNT = Low Cab Forward. D = Conventional Cab. S = School Bus. W = 4-Wheel Drive.

AR=Use as Required

=New Part Number

Printed in U.S.A.

June, 1982

1978-81 LIGHT DUTY TRUCK PARTS CATALOG

EXHAUST

ITEM	PART NUMBER	QTY	MODEL	DESCRIPTION
EXHAUST SYSTEM				
D-W1,2 - DIESEL ENGINE				
18	4089 650	1	D-W	SUPPORT, Tail Pipe Extension
	4167 427	1	D-W	SUPPORT, And Insulator Tail Pipe 1980
19	181 088	2	D-W	SCREW (5/16-18x1/2)
20	3466 652	1	D-W	CLAMP, Tail Pipe Extension
21	181 112	2	D2	BOLT (3/8-16x1.00)
22	3820 058	1	D-W2	SUPPORT, Exhaust Pipe, Rear, w/Crew Cab, 1978
23	181 083	2	D2	BOLT (1/4-20x3/4)
	1803 364	1	D1-2	SADDLE, Exh. Pipe 2" Dia. 1980 (Not Shown)
24	3466 646	1	D-W2	SUPPORT w/INSULATOR, Exhaust Pipe, Rear, w/Crew Cab, 1978
25	6022 243	1	D2	SCREW (5/16-18x1.25)
26	6025 004	2	D2	NUT (1/4-20)
27	6025 020	2	D2	NUT (3/8-16)
28	4112 635	1	D2	BRACKET, Muffler Front Support, w/Crew Cab, 1979
	4112 636	1	W2	
29	4115 424	1	D-W2	HANGER, Muffler, Front, w/Crew Cab, 1979
30	4030 907	1	D-W	SUPPORT, Muffler, Rear, w/149" W.B. Club Cab, 1979
6A	152 344	3	B1-2-3	NUT, Lock Exh Pipe Flange (3/8-16) 1979

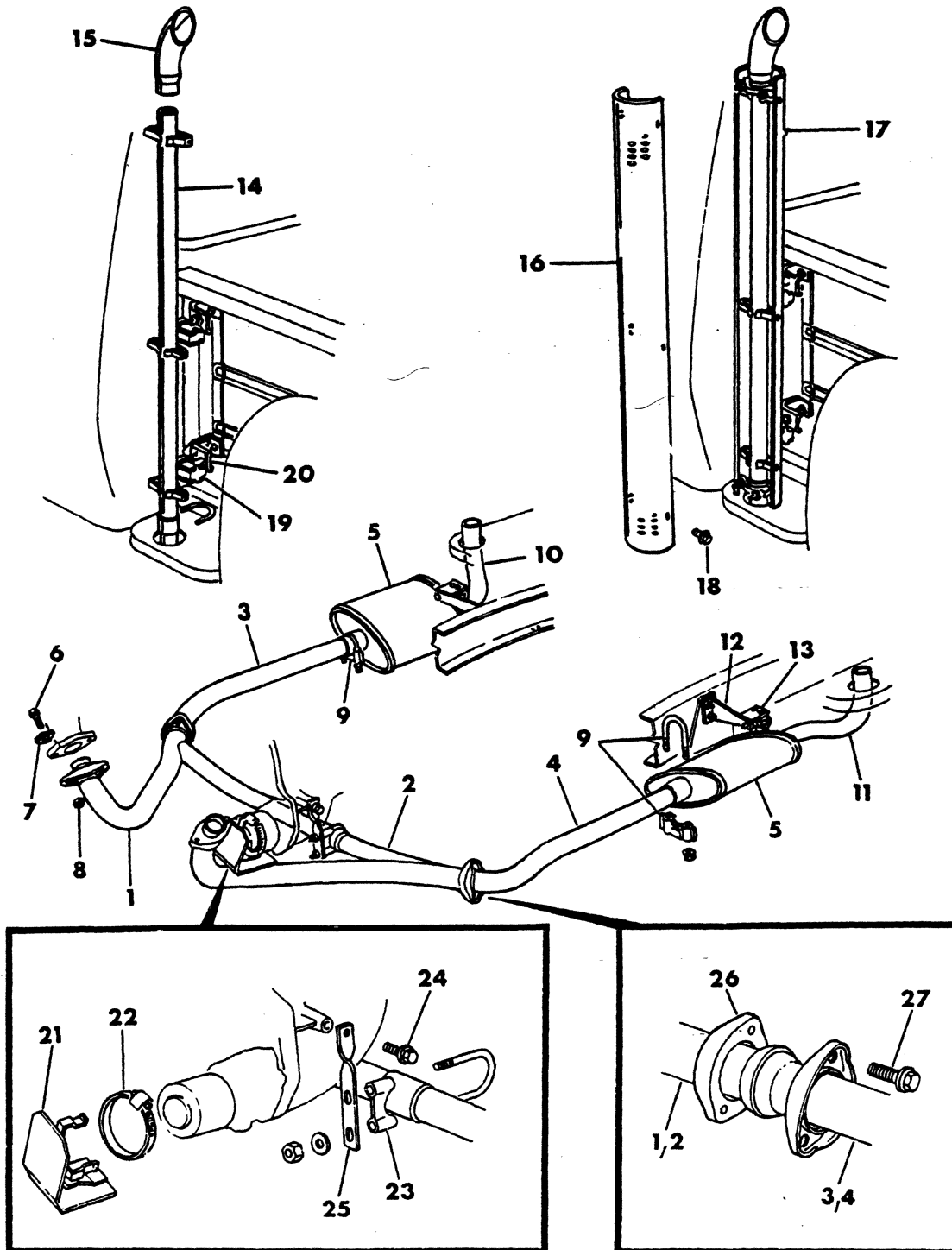
LIGHT	A = All Sport Utility (Ramcharger).	B = All Compact Models.	D = Conventional Cab.
DUTY	AD = 2 Wheel Drive Only (Ramcharger).	CB-MB = Compact Front Section Only.	W = Conventional Cab 4 Wheel Drive.
CODES:	AW = 4 Wheel Drive Only (Ramcharger).	P = Forward Control Chassis.	M = Motor Home.

MEDIUM-HEAVY CODES: XNT = Low Cab Forward. D = Conventional Cab. S = School Bus. W = 4-Wheel Drive.

AR=Use as Required # =New Part Number Printed in U.S.A. June, 1982

EXHAUST SYSTEM 360 ENGINE - LITTLE RED EXPRESS TRUCK

8311 575



ITEM	PART NUMBER	QTY	MODEL	DESCRIPTION
EXHAUST SYSTEM				
360 ENGINE - LITTLE RED EXPRESS TRUCK				
1	4115 292	1		PIPE, Exh. Right Front 1979-80
2	4115 291	1		Left, Front 1979-80
3	4115 288	1		Right, rear 1978
4	4115 289	1		Left, rear 1978
5	4115 294	2		MUFFLER
	4115 284-5	1		CONVERTER, And Pipe 360 Hi-Perf. 1979
	4115 295	2		SHIELD, Muffler Heat
6	181 127	4		BOLT, (3/8 - 16 x 2.25)
7	4004 001	4		RETAINER 1978-79
	6026 648	4		1980
8	152 344	4		NUT, lock (3/8 - 16)
9	4004 525	2		CLAMP (2 1/4")
10	4115 282	1		PIPE, Tail Pipe Right front
11	4115 283	1		Left front
12	4115 319	2		SUPPORT, muffler & tail pipe
13	4115 318	2		SUPPORT, muffler rear
	181 112	AR		BOLT, (3/8 - 16 x 1.00)
	4004 525	2		CLAMP Assy. (3/8 - 16 nut)
14	4115 279	2		PIPE, tail interm.
15	4115 299	2		PIPE, tail extension
16	4186 825	2		SHIELD, Heat Outer
17	4115 342	2		inner
	4164 592	2		BOLT, Tail Pipe Heat Shield
18				SCREW (5/16 - 18 x .62)
19	3642 500	4		INSULATOR
20	4113 174	1		BRACKET, Right 1978-79
	4113 175	1		BRACKET, Left 1978-79
	4113 174	4		BRACKET 1980
	181 086	AR		SCREW, (5/16 - 18 x .75)
21	1934 547	1		SHIELD, heat
22	1928 293	1		CLAMP, Assy. 1978-79
23	1603 364	1		SADDLE
24	181 086	1		SCREW (5/16 - 18 x .75)
25	4115 293	1		SUPPORT
26	1946 639	1		FLANGE
27	6023 187	1		SCREW (3/8 - x 1.38)
	4115 296	2		SHIELD, Cata. Conv. Heat 1979 (Not Shown)

LIGHT	A = All Sport Utility (Ramcharger).	B = All Compact Models.	D = Conventional Cab.
DUTY	AD = 2 Wheel Drive Only (Ramcharger).	CB-MB = Compact Front Section Only.	W = Conventional Cab 4 Wheel Drive.
CODES:	AW = 4 Wheel Drive Only (Ramcharger).	P = Forward Control Chassis.	M = Motor Home.

MEDIUM-HEAVY CODES: XNT = Low Cab Forward. D = Conventional Cab. S = School Bus. W = 4-Wheel Drive.

AR=Use as Required

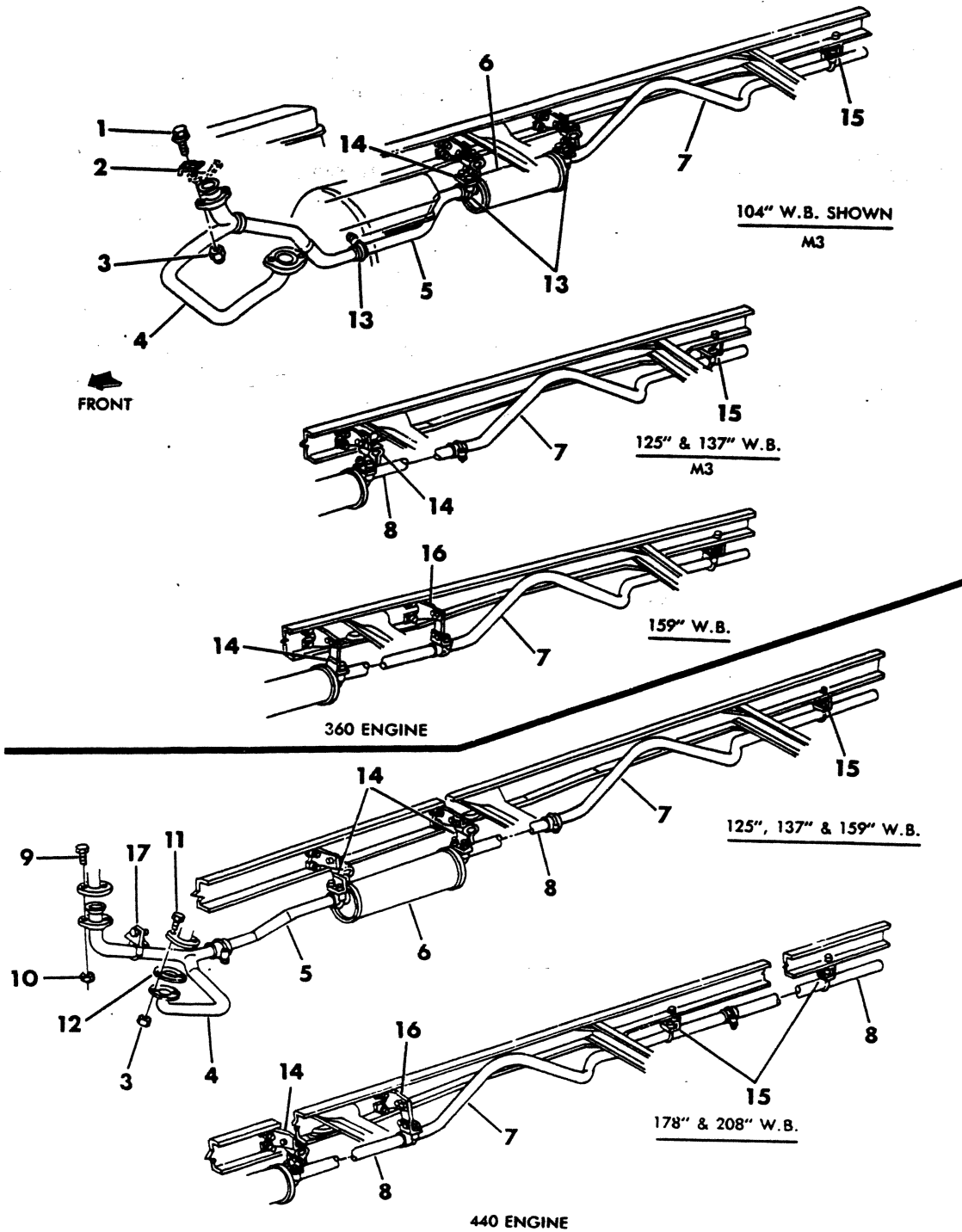
= New Part Number

Printed in U.S.A.

June, 1982

EXHAUST SYSTEM MOTOR HOME

8311 600B



EXHAUST

1978-81 LIGHT DUTY TRUCK PARTS CATALOG

ITEM	PART NUMBER	QTY	MODEL	DESCRIPTION
EXHAUST SYSTEM MOTOR HOME				
1	9426 559	4		BOLT,3/8-16x2.25
2	4004 001	4		RETAINER,Exh.Pipe Flange
	3404 043	4		360 eng.
3	152 346	4		NUT,3/8-16
4	4039 683	1		PIPE,Exh.Frt.360 Eng. 1978-79
	4164 967	1		1980
	4039 686	1		440 Eng.
5	4039 691	1		PIPE,Exh.Rear 360 Eng.
	4039 692	1		440 Eng.
6	4039 291	1		MUFFLER 1978
	4117 114	1		1979-80
7	3822 334	1		PIPE,Tail
	4210 551	1	M3-4	360-3 Eng. 1980
	4210 757	1	M6	PIPE, Frt. Rr Axle Kick Up Tail 228 W.B 1980
	4210 758	1	M6	PIPE, Rear Rr Axle Kick Up Tail 228 W.B 1980
8	3638 129	1		PIPE,Tail 360-3 , 440-3 Eng.
9	181 127	1		BOLT,3/8-16x2-1/4
10	152 344	1		NUT,3/8-16
11	9420 124	2		BOLT,7/16-14x1.75
12	2465 391	1		GASKET,Left Side
13	4004 445	2		CLAMP,Assy.
14	4039 681	1		SUPPORT,Insulator Except 208" W.B.
	4039 682	1		w/208" W.B.
	4115 451	1	M6	Support, Muffler & Tailpipe 1978
	4164 968	1	M5-6	1979-80
	3733 819	1		BRACKET, Muff. And Tail Pipe Supt. 1979-80
15	3638 587	1		SUPPORT 1979
	4210 742	1		1980
	4210 741	1		HANGER, Support 1980
16	4039 681	1		SUPPORT
17	3733 659	1		Bracket, exh. pipe supt.
				FOLLOWING ITEMS NOT SHOWN
	2465 391	1		Gasket, Exh. pipe flange
	4030 217	1	M6	Pipe, Tail frt. 1979
	4150 151	1	M3-4	SHIELD, Cata. Conv. Heat 360-3 w/Emission Reduction 1980
	4164 778	1	M6-4	w/Tag Axle 1980
	1603 364	1		SADDLE, Exh. Pipe To Supt. 2" Dia. 1980
	4164 754	1		CONV. And Pipe Assy w/Emission Reduction 360-3 Eng. 1980
	4150 155	2	M3-4	U/Bolt Cata. Conv. Lwr. Ht. Shield 1980
	3638 129	1	M3-4	PIPE, Muffler Tail Frt. 137 W.B.1980
	3638 129	1	M4	360-3 Eng. 159 W.B. 1980
	4210 552	1	M3-4	EXTENSION, Muff. Tail Pipe 360-3 Eng. 1980

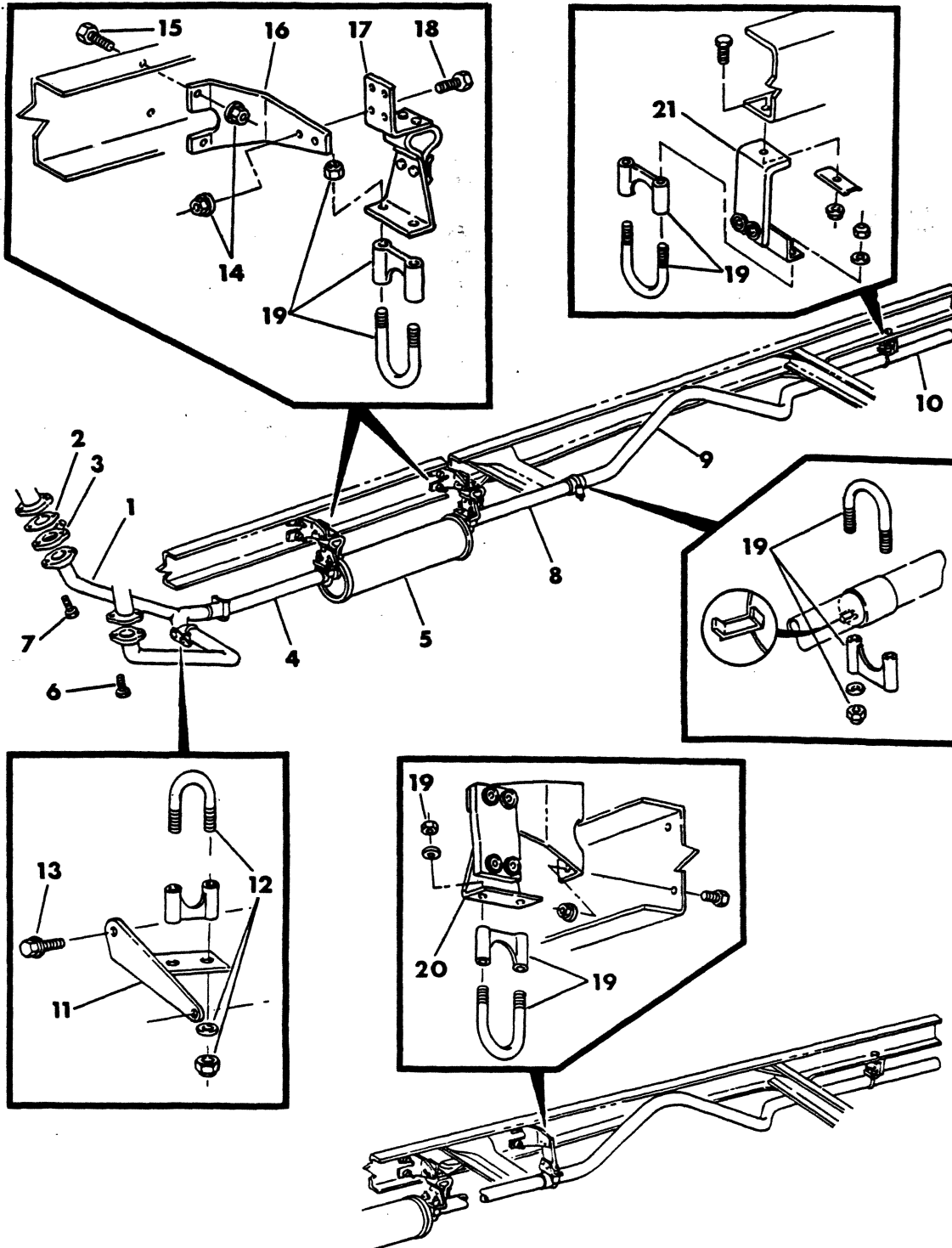
LIGHT DUTY CODES: A = All Sport Utility (Ramcharger). B = All Compact Models. D = Conventional Cab.
AD = 2 Wheel Drive Only (Ramcharger). CB-MB = Compact Front Section Only. W = Conventional Cab 4 Wheel Drive.
CODES: AW = 4 Wheel Drive Only (Ramcharger). P = Forward Control Chassis. M = Motor Home.

MEDIUM-HEAVY CODES: XNT = Low Cab Forward. D = Conventional Cab. S = School Bus. W = 4-Wheel Drive.

AR=Use as Required # = New Part Number Printed in U.S.A. June, 1982

EXHAUST SYSTEM M3-4-5-6 -IHC 446 ENG

8311 650



EXHAUST

1978-81 LIGHT DUTY TRUCK PARTS CATALOG

ITEM	PART NUMBER	QTY	MODEL	DESCRIPTION
EXHAUST SYSTEM M3-4-5-6 -IHC 446 ENG				
1	4164 779	1		PIPE, Exhaust Frt. 1979-80
	4167 301	1		w/Emission Reduction 1980
2	4112 529	1		GASKET, Flange To RT Manifold
	4117 076	1		SEAL, Exh. Pipe To RT Manif. Ring 1980-81 (Not Shown)
3	4117 056	1		VALVE, Heat Riser RT Side Only 1979-80
4	4039 692	1		PIPE, Exh. Rear 1979
	4164 780	1		1980
	4164 780	1		w/Heavy Duty Cycle 1981
5	4164 791	1		MUFFLER 1979-80
	4164 791	1		w/Heavy Duty Cycle 1981
6	9421 218	2		SCREW, Exh. Pipe Flange LT (3/8 - 16 x 1 1/2) 1979-80
7	181 127	2		RIGHT (3/8 - 16 x 2)
	180 075	2		SCREW, And Wa. Exh. Pipe Supt. Mtg.
8	4164 787	1	M3-4	PIPE, Muff. Tail Frt 137 WB 34 1/2" Long 1979-80
	4164 788	1	M4-5	159 WB 56" Long 1979-80
	4164 789	1	M5	178 WB 75 1/2" Long 1979-80
	4164 790	1	M6	All WB 105" Long 1979-80
9	4117 732	1	M3-4-5	PIPE, Muff. Tail Rear M5 159 WB M3-4 All 1980
	4117 732	1	M4-5	All W.B. 1981
	4164 298	1	M3-4-5	M3 137 WB M4 ALL M5 159 WB 1979-80
	4164 298	1		PIPE, Muffler Tail Inter. 1979-80
	4210 757	1	M6	PIPE, Frt. Rr Axle Kick-Up Tail 228 W.B 1980
	4210 758	1	M6	PIPE, Rear Rr Axle Kick-Up Tail 228 W.B 1980
10	4164 996	1	M5	PIPE, Tail Rear 178 WB 61" Long 1979
	4117 732	1	M3-4-5	1980
	4164 997	1	M6	208 WB 75" Long 1979
	4164 405	1	M6	1980-81
	4039 682	1	M4	SUPPORT, Muffler And Tail Pipe 159 WB 1979
	4164 968	1	M4	159 W.B. 1980-81
	4039 682	1	M5	ALL
	4164 784	1	M4	137 W.B. All Trans. 1981
11	4112 540	1		BRACKET, Exhaust Pipe Supt.
12	1603 364	1		CLAMP, Pkg. 2"
	4004 525	1		2 1/4"
13	1947 593	2		SCREW (5/16-18x1.00)
14	118 614	2		NUT, And Washer (5/16-18)
15	181 088	AR		BOLT (5/16-18x1.00)
16	3733 819	1		SUPPORT, Muffler And Exh. Pipe
17	4164 782	1		SUPPORT, Muffler And Exh. Pipe 1979-80
	4164 782	1		w/Heavy Duty Cycle 1981
18	181 086	2		BOLT (5/16-18x.75)
19	4176 390	1		CLAMP PKG.
20	4112 764	1	M4	SUPPORT, Tail Pipe 159 W.B. 1979-80
	4112 764	1	M5-6	ALL 1979-80
	4164 446	1	M3-4-5	M3,4 All M5 w/159 W.B. 1980
21	4112 763	1	M3-5	INSULATOR, Tail Pipe Supt. 137-159-178 WB 1979
	4112 763	1	M4-6	ALL
	4210 742	1	M3-4-5-6	M5-159-178 WB M3-4-6 All WB 1980
22	6025 020	AR		NUT (3/8-16)

LIGHT A = All Sport Utility (Ramcharger). B = All Compact Models. D = Conventional Cab.
DUTY AD = 2 Wheel Drive Only (Ramcharger). CB-MB = Compact Front Section Only. W = Conventional Cab 4 Wheel Drive.
CODES: AW = 4 Wheel Drive Only (Ramcharger). P = Forward Control Chassis. M = Motor Home.

MEDIUM-HEAVY CODES: XNT = Low Cab Forward. D = Conventional Cab. S = School Bus. W = 4-Wheel Drive.

AR=Use as Required

=New Part Number

Printed in U.S.A.

June, 1982

1978-81 LIGHT DUTY TRUCK PARTS CATALOG

EXHAUST

ITEM	PART NUMBER	QTY	MODEL	DESCRIPTION
------	-------------	-----	-------	-------------

EXHAUST SYSTEM M3-4-5-6 -IHC 446 ENG

	4112 758	2		FLANGE, Exh. Pipe (Not Shown) 1979-80
--	----------	---	--	---------------------------------------

LIGHT	A = All Sport Utility (Ramcharger).	B = All Compact Models.	D = Conventional Cab.
DUTY	AD = 2 Wheel Drive Only (Ramcharger).	CB-MB = Compact Front Section Only.	W = Conventional Cab 4 Wheel Drive.
CODES:	AW = 4 Wheel Drive Only (Ramcharger).	P = Forward Control Chassis.	M = Motor Home.
MEDIUM-HEAVY CODES: XNT = Low Cab Forward. D = Conventional Cab. S = School Bus. W = 4-Wheel Drive.			
AR=Use as Required		#=New Part Number	Printed in U.S.A.
			June, 1982

8311 800

EXHAUST SYSTEM
P300ILLUSTRATION
TO
FOLLOW

ITEM	PART NUMBER	QTY	MODEL	DESCRIPTION
	2907 931	1		PIPE, exhaust
	2465 391	1		GASKET exh. pipe flange
	2909 479	1		SUPPORT, exh. pipe
	2228 099	1		PIPE, muffler tail
	1928 000	1		INSULATOR assy. muffler & tail pipe
	2509 901	1		SUPPORT, muffler & tail pipe
	2832 807	1		BRACKET, tail pipe supt. clamp
	1394 152	1		SPACER, tail pipe supt. brkt. insul.
	2228 066	1		INSULATOR, tail pipe supt. brkt.

LIGHT	A = All Sport Utility (Ramcharger).	B = All Compact Models.	D = Conventional Cab.
DUTY	AD = 2 Wheel Drive Only (Ramcharger).	CB-MB = Compact Front Section Only.	W = Conventional Cab 4 Wheel Drive.
CODES:	AW = 4 Wheel Drive Only (Ramcharger).	P = Forward Control Chassis.	M = Motor Home.
MEDIUM-HEAVY CODES:	XNT = Low Cab Forward.	D = Conventional Cab.	S = School Bus. W = 4-Wheel Drive.

AR=Use as Required

= New Part Number

Printed in U.S.A.

June, 1982

