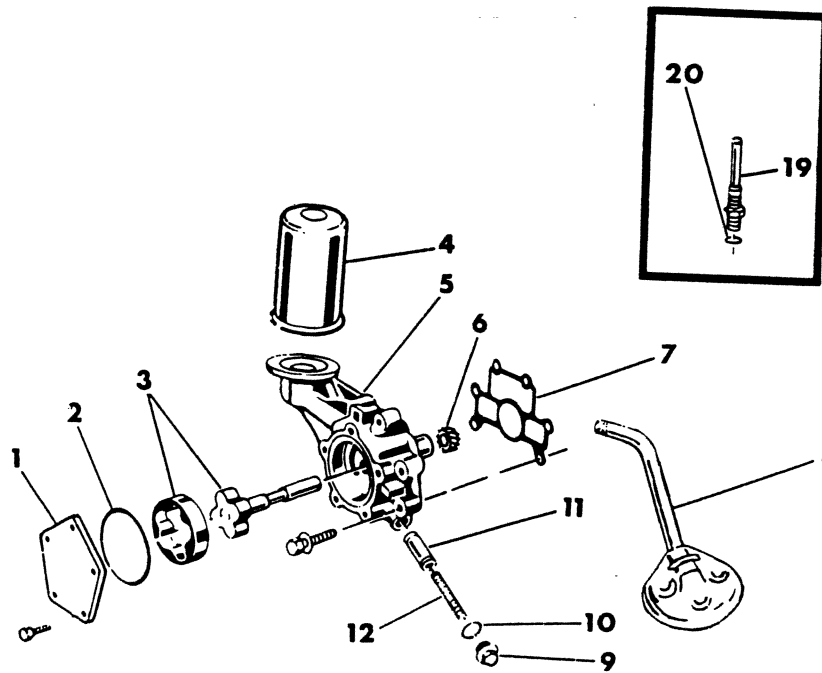
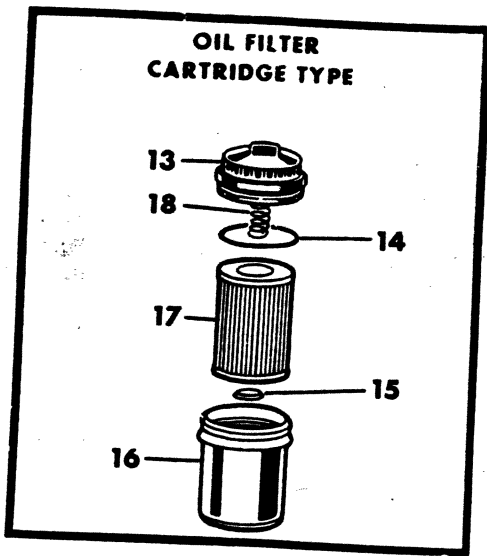


**GROUP 10 - ENGINE OILING**

|   |             |
|---|-------------|
| BREATHER MMC DIESEL .....                                     | Fig. 10-600 |
| OIL FILLER TUBE .....   | Fig. 10-295 |
| OIL PAN & INDICATOR .....                                     | Fig. 10-400 |
| OIL PAN AND INDICATOR MMC DIESEL .....                        | Fig. 10-500 |
| OIL PAN, INDICATOR & FILTER MOTOR HOME .....                  | Fig. 10-410 |
| OIL PUMP AND FILTER 225 ENGINE .....                          | Fig. 10-100 |
| OIL PUMP AND FILTER 318 - 360 ENGINE .....                    | Fig. 10-125 |
| OIL PUMP AND FILTER 400 - 440 ENGINE .....                    | Fig. 10-150 |
| OIL PUMP AND FILTER MMC DIESEL .....                          | Fig. 10-175 |
| OIL PUMP, PAN, INDICATOR & FILTER 446 ENGINE MOTOR HOME ..... | Fig. 10-420 |

8310 100A

## OIL PUMP AND FILTER 225 ENGINE

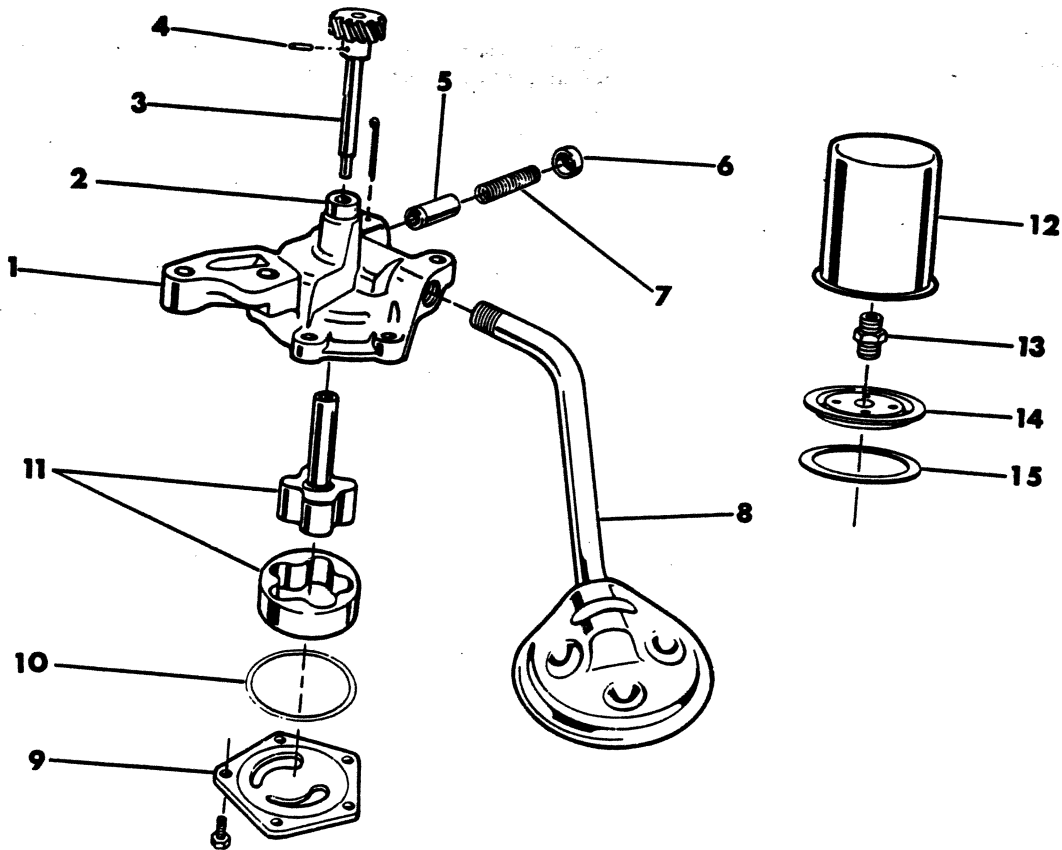


| ITEM                                      | PART NUMBER | QTY | MODEL | DESCRIPTION                              |
|---|-------------|-----|-------|--|
| <b>OIL PUMP AND FILTER<br/>225 ENGINE</b> |             |     |       |  |
| 1   |             |     |       | COVER (serviced in Ref.5)                |
| 2   | 2268 921    | 1   |       | GASKET, Oil Pump Cover                   |
| 3   |             |     |       | SHAFT & ROTOR PKG.                       |
|   | 2084 415    | 1   |       | 1978-79                                  |
|   | 4186 183    | 1   |       | 1980-81                                  |
|   | 3837 648    | 1   |       | ROTOR, Oil Pump - Outer 1980-81          |
| 4   | 3549 957    | 1   |       | FILTER, Oil (Sealed Type)                |
| 5   |             |     |       | PUMP, Oil                                |
|   | 4106 047    | 1   |       | 1978-79                                  |
|   | 4186 182    | 1   |       | 1980-81                                  |
| 6   | 1947 225    | 1   |       | GEAR, Oil Pump Drive                     |
| 7   | 4095 863    | 1   |       | GASKET, Oil Pump Body                    |
| 8   | 3671 584    | 1   |       | STRAINER, Oil Pump Suction               |
|   | 2128 657    | 1   | P3    |  |
| 9   | 618 621     | 1   |       | CAP, Oil Pressure Relief Valve           |
| 10  | 618 622     | 1   |       | GASKET, Oil Pressure Relief Cap          |
| 11  | 2120 764    | 1   |       | PLUNGER, Oil Pressure Relief Valve       |
| 12  | 1737 742    | 1   |       | SPRING, Oil Pressure Relief Valve        |
| 13  | 2806 671    | 1   |       | COVER, Oil Filter (Cartridge Type)       |
| 14  | 2532 754    | 1   |       | GASKET, Oil Filter Cover                 |
| 15  | 2532 753    | 1   |       | GASKET, Oil Filter Body (Cartridge Type) |
| 16  |             | 1   |       | FILTER (not serviced)                    |
| 17  | 2532 752    | 1   |       | CARTRIDGE, Oil Filter (Cartridge Type)   |
| 18  |             | 1   |       | SPRING (not serviced)                    |
| 19  | 3577 848    | 1   |       | VALVE w/PIPE, Oil Filter Stand           |
| 20  | 2120 017    | 1   |       | GASKET, Oil Filter Stand Pipe            |

|  |                                       |                                     |                                     |
|--|---------------------------------------|-------------------------------------|-------------------------------------|
| <b>LIGHT</b>   | A = All Sport Utility (Ramcharger).   | B = All Compact Models.             | D = Conventional Cab.               |
| <b>DUTY</b>  | AD = 2 Wheel Drive Only (Ramcharger). | CB-MB = Compact Front Section Only. | W = Conventional Cab 4 Wheel Drive. |
| <b>CODES:</b>  | AW = 4 Wheel Drive Only (Ramcharger). | P = Forward Control Chassis.        | M = Motor Home.                     |
| <b>MEDIUM-HEAVY CODES:</b> XNT = Low Cab Forward. D = Conventional Cab. S = School Bus. W = 4-Wheel Drive. |                                       |                                     |                                     |
| AR=Use as Required   | # = New Part Number                   | Printed in U.S.A.                   | June, 1982                          |

8310 125A

OIL PUMP AND FILTER  
318 - 360 ENGINE



| ITEM  | PART NUMBER | QTY | MODEL | DESCRIPTION                                 |
|---|-------------|-----|-------|---|
| <b>OIL PUMP AND FILTER<br/>318 - 360 ENGINE</b> |             |     |       |   |
| 1   | 2806 270    | 1   |       | PUMP, Oil                                   |
| 2   | 2863 584    | 1   |       | BUSHING, Oil Pump & Distributor Drive Shaft |
| 3   | 4095 260    | 1   |       | SHAFT, Oil Pump & Distributor Drive         |
| 4   | 103 726     | 1   |       | PIN, Oil Pump & Distributor Drive Gear      |
| 5   | 2843 208    | 1   |       | PLUNGER, Oil Pressure Relief Valve          |
| 6   | 2806 273    | 1   |       | CAP, Oil Pressure Relief Valve Plunger      |
| 7   | 2402 473    | 1   |       | SPRING, Oil Pressure Relief Valve           |
| 8   | 3462 337    | 1   |       | STRAINER, Oil Pump Suction Pipe             |
|   | 2208 200    | 1   |       | 360-3 Eng.                                  |
| 9   | 4071 043    | 1   |       | COVER, Oil Pump                             |
| 10  | 2268 921    | 1   |       | GASKET, Oil Pump Cover                      |
| 11  |             |     |       | DRIVE SHAFT & ROTOR PKG., Oil Pump          |
|   | 3837 648    | 1   |       | 318 Eng.                                    |
|   | 4049 307    | 1   |       | 360 Eng.                                    |
| 12  | 3549 957    | 1   |       | FILTER, Oil                                 |
| 13  | 3671 602    | 1   |       | ADAPTER, Oil Filter to Cylinder Block       |
| 14  | 2402 103    | 1   |       | PLATE, Oil Filter Adapter                   |
| 15  | 3671 314    | 1   |       | GASKET, Oil Filter Adapter Plate            |

|               |                                       |                                     |                                     |
|---------------|---------------------------------------|-------------------------------------|-------------------------------------|
| <b>LIGHT</b>  | A = All Sport Utility (Ramcharger).   | B = All Compact Models.             | D = Conventional Cab.               |
| <b>DUTY</b>   | AD = 2 Wheel Drive Only (Ramcharger). | CB-MB = Compact Front Section Only. | W = Conventional Cab 4 Wheel Drive. |
| <b>CODES:</b> | AW = 4 Wheel Drive Only (Ramcharger). | P = Forward Control Chassis.        | M = Motor Home.                     |

**MEDIUM-HEAVY CODES:** XNT = Low Cab Forward. D = Conventional Cab. S = School Bus. W = 4-Wheel Drive.

AR=Use as Required

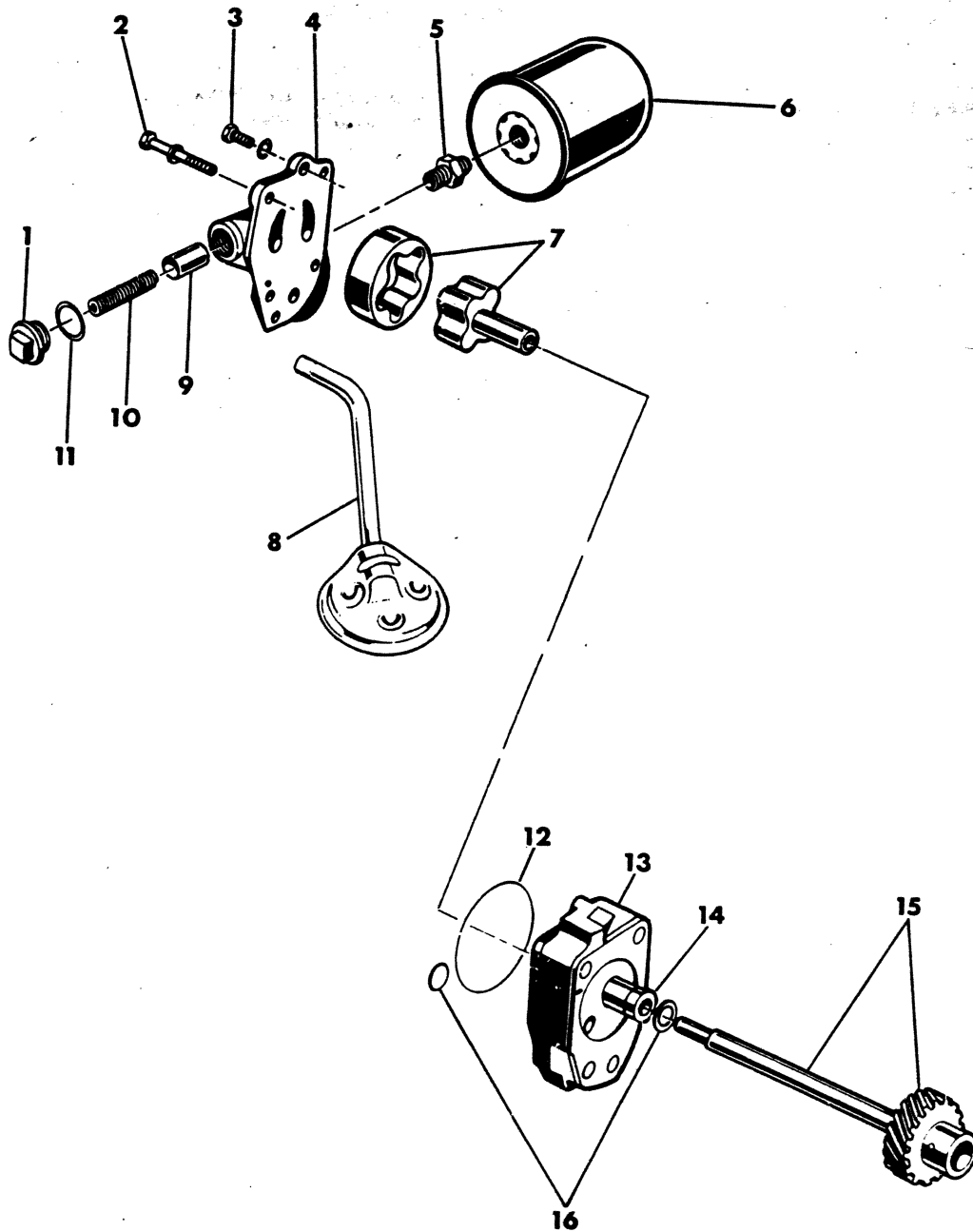
# =New Part Number

Printed in U.S.A.

June, 1982

8310 150

## OIL PUMP AND FILTER 400 - 440 ENGINE



| ITEM  | PART NUMBER | QTY | MODEL | DESCRIPTION                                 |
|---|-------------|-----|-------|---|
| <b>OIL PUMP AND FILTER<br/>400 - 440 ENGINE</b> |             |     |       |   |
| 1   | 618 621     | 1   |       | CAP, Oil Pressure Relief Valve              |
| 2   | 9420 892    | 3   |       | SCREW, Oil Pump Attaching 3/8 x 2 5/8       |
|   | 433 116     | 1   |       | 3/8 x 4 1/4                                 |
| 3   | 181 086     | 1   |       | SCREW, Oil Pump Cover 5/16 x 3/4            |
| 4   | 4095 286    | 1   |       | COVER, Oil Pump & Oil Filter Base           |
| 5   | 4095 283    | 1   |       | ADAPTER, Oil Pump Cover to Oil Filter Base  |
| 6   | 3549 957    | 1   |       | FILTER, Oil                                 |
| 7   | 2084 354    | 1   |       | SHAFT & ROTOR PKG., Oil Pump Drive          |
| 8   | 4027 238    | 1   |       | STRAINER, Oil Pump Suction Pipe             |
|   | 2806 838    | 1   |       | 440-3 Eng.                                  |
| 9   | 2120 764    | 1   |       | PLUNGER, Oil Pressure Relief Valve          |
| 10  | 2406 677    | 1   |       | SPRING, Oil Pressure Relief Valve           |
| 11  | 618 622     | 1   |       | GASKET, Oil Pressure Relief Valve Cap       |
| 12  | 2268 921    | 1   |       | GASKET, Oil Pump Cover - Large              |
| 13  | 4186 189    | 1   |       | PUMP, Oil                                   |
| 14  | 2863 584    | 1   |       | BUSHING, Oil Pump & Distributor Drive Shaft |
| 15  | 1739 604    | 1   |       | SHAFT, Oil Pump Distributor Drive           |
| 16  | 2084 355    | 1   |       | GASKET & SEAL PKG., Oil Pump                |

|               |                                       |                                     |                                     |
|---------------|---------------------------------------|-------------------------------------|-------------------------------------|
| <b>LIGHT</b>  | A = All Sport Utility (Ramcharger).   | B = All Compact Models.             | D = Conventional Cab.               |
| <b>DUTY</b>   | AD = 2 Wheel Drive Only (Ramcharger). | CB-MB = Compact Front Section Only. | W = Conventional Cab 4 Wheel Drive. |
| <b>CODES:</b> | AW = 4 Wheel Drive Only (Ramcharger). | P = Forward Control Chassis.        | M = Motor Home.                     |

**MEDIUM-HEAVY CODES:** XNT = Low Cab Forward. D = Conventional Cab. S = School Bus. W = 4-Wheel Drive.

AR=Use as Required

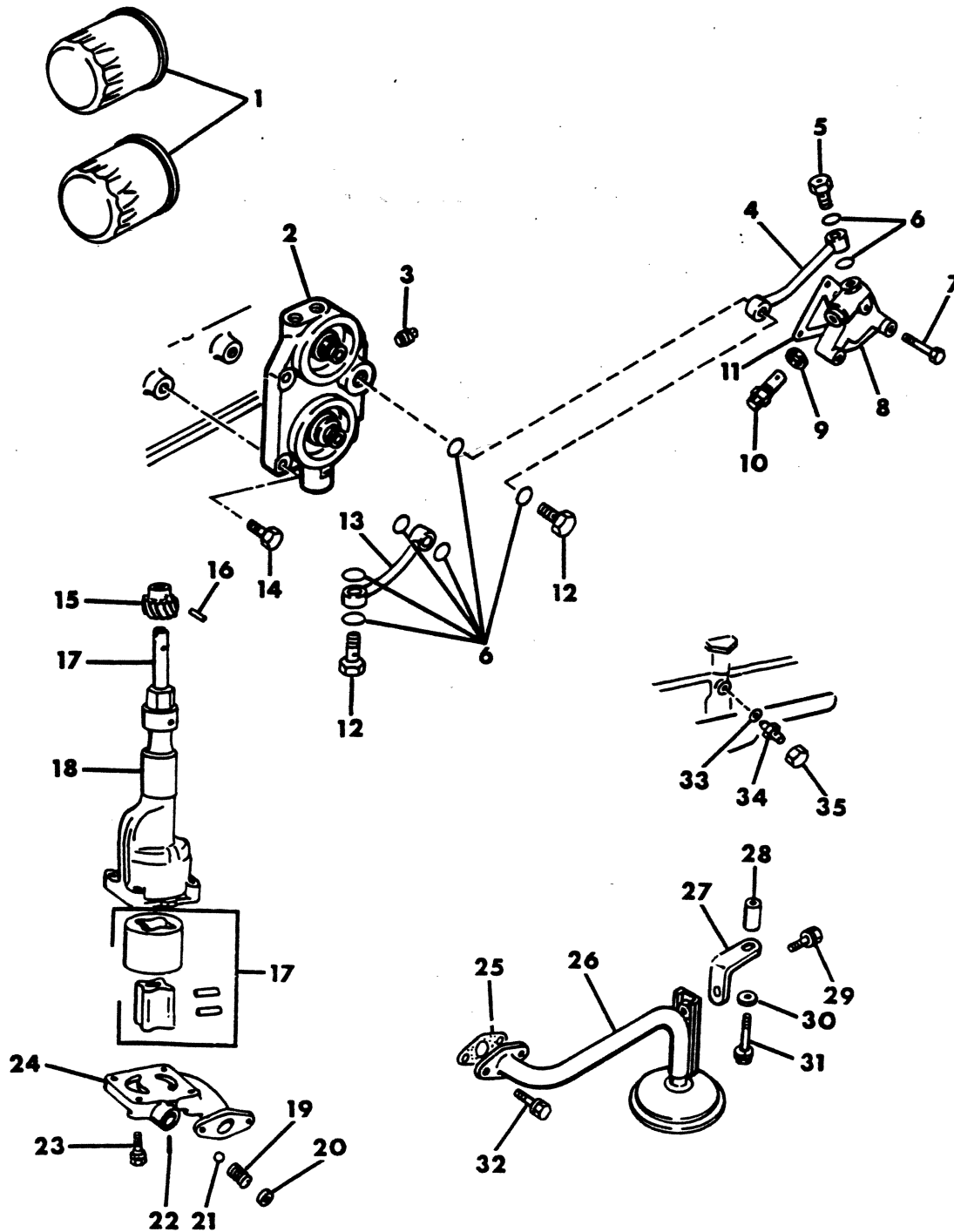
# = New Part Number

Printed in U.S.A.

June, 1982

8310 175

## OIL PUMP AND FILTER MMC DIESEL





| ITEM                                      | PART NUMBER | QTY | MODEL | DESCRIPTION   |
|---|-------------|-----|-------|---|
| <b>OIL PUMP AND FILTER<br/>MMC DIESEL</b> |             |     |       |   |
| 1   | 3549 957    | 2   |       | FILTER, Oil   |
| 2   | ME00 7259   | 1   |       | HEAD, Oil Filter  |
| 3   | ME66 5143   | 1   |       | PLUG  |
| 4   | ME00 7256   | 1   |       | PIPE, Oil B   |
| 5   | ME00 7258   | 1   |       | BOLT, Eye   |
| 6   | MH03 5091   | 8   |       | O-RING  |
| 7   | MF30 0011   | 3   |       | BOLT 10 x 50  |
| 8   | ME00 7253   | 1   |       | CASE, Relief Valve                                      |
| 9   | ME00 7081   | 1   |       | GASKET, Relief Valve                                    |
| 10  | ME00 7080   | 1   |       | VALVE, Relief   |
| 11  | ME00 7079   | 1   |       | GASKET, Relief Valve Case                               |
| 12  | ME00 7252   | 2   |       | BOLT, Eye   |
| 13  | ME00 7255   | 1   |       | PIPE, Oil A   |
| 14  | MF24 1555   | 4   |       | BOLT w/WASHER 10 x 35                                   |
| 15  | ME00 7075   | 1   |       | GEAR, Pump Drive  |
| 16  | ME00 7076   | 1   |       | PIN   |
| 17  | ME00 7243   | 1   |       | SHAFT, Oil Pump   |
| 18  | ME00 7250   | 1   |       | PUMP & COVER, Oil (Includes #'s 15,16,17,18,19,20 & 24) |
|   | ME00 7244   | 1   |       | CASE, Oil Pump  |
| 19  | ME03 4013   | 1   |       | SPRING  |
| 20  | ME03 4014   | 1   |       | SEAT, Spring  |
| 21  | MF54 0014   | 1   |       | BALL  |
| 22  | MF47 2085   | 1   |       | PIN   |
| 23  | MF24 1277   | 2   |       | BOLT w/WASHER 6 x 20                                    |
|   | MF24 1231   | 2   |       | BOLT w/WASHER 6 x 30                                    |
| 24  | ME00 7249   | 1   |       | COVER & VALVE (Includes #'s 19,20 & 24)                 |
| 25  | ME02 0663   | 1   |       | GASKET, Oil Strainer                                    |
| 26  | ME00 7257   | 1   |       | STRAINER, Oil   |
| 27  | ME93 0231   | 1   |       | STAY, Oil Strainer                                      |
| 28  | ME92 0041   | 1   |       | SPACER  |
| 29  | MF24 4851   | 1   |       | BOLT w/WASHER 8 x 20                                    |
| 30  | ME00 7184   | 1   |       | WASHER  |
| 31  | MF24 1262   | 1   |       | BOLT w/WASHER 8 x 45                                    |
| 32  | MF24 1555   | 2   |       | BOLT w/WASHER 8 x 25                                    |
| 33  | ME00 7077   | 1   |       | GASKET, Bolt Joint                                      |
| 34  | MH03 7231   | 1   |       | BOLT, Joint   |
| 35  | ME00 7078   | 1   |       | NUT, Cap  |

|               |                                       |                                     |                                     |
|---------------|---------------------------------------|-------------------------------------|-------------------------------------|
| <b>LIGHT</b>  | A = All Sport Utility (Ramcharger).   | B = All Compact Models.             | D = Conventional Cab.               |
| <b>DUTY</b>   | AD = 2 Wheel Drive Only (Ramcharger). | CB-MB = Compact Front Section Only. | W = Conventional Cab 4 Wheel Drive. |
| <b>CODES:</b> | AW = 4 Wheel Drive Only (Ramcharger). | P = Forward Control Chassis.        | M = Motor Home.                     |

**MEDIUM-HEAVY CODES:** XNT = Low Cab Forward. D = Conventional Cab. S = School Bus. W = 4-Wheel Drive.

AR=Use as Required

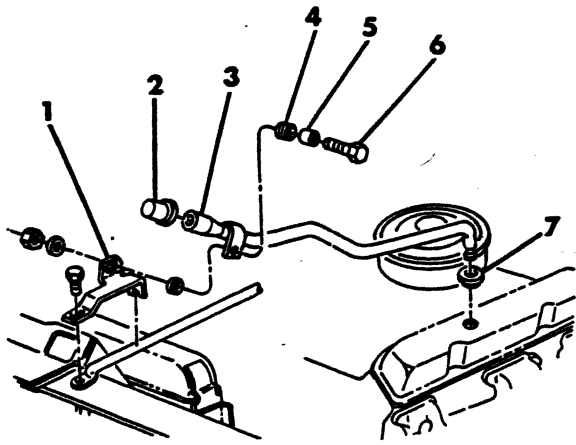
# =New Part Number

Printed in U.S.A.

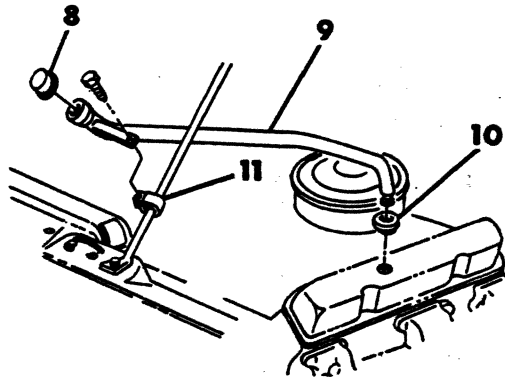
June, 1982

8310 295B

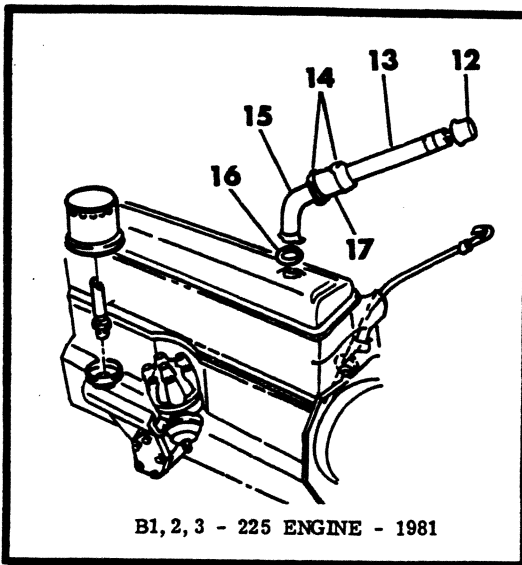
OIL FILLER TUBE



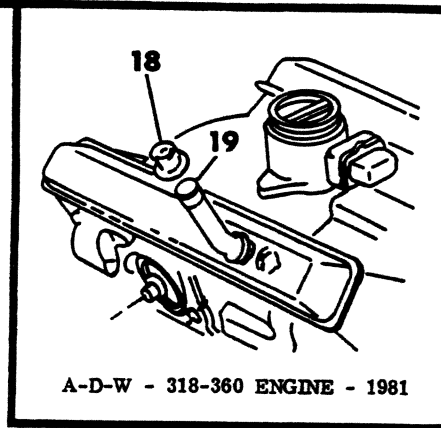
B-CB-MB - 1978



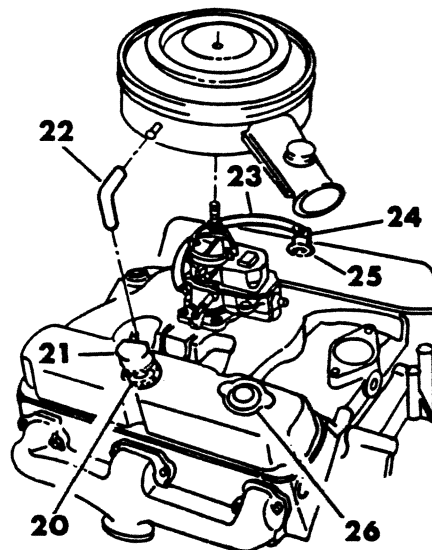
B-CB-MB - 1979-80-81



B1, 2, 3 - 225 ENGINE - 1981



A-D-W - 318-360 ENGINE - 1981



| ITEM                   | PART NUMBER | QTY | MODEL | DESCRIPTION                                  |
|------------------------|-------------|-----|-------|--|
| <b>OIL FILLER TUBE</b> |             |     |       |  |
| 1                      | 4032 455    | 1   |       | BRACKET, Filler Pipe Support                 |
| 2                      | 2960 622    | 1   |       | CAP, Oil Filler Pipe                         |
| 3                      |             |     |       | TUBE, Oil Filler                             |
|                        | 4039 016    | 1   |       | 318 & 360 Eng. 1978                          |
|                        | 4089 366    | 1   |       | 400 & 440 Eng. 1978                          |
| 4                      | 1540 181    | 1   |       | GROMMET                                      |
| 5                      |             | 1   |       | SPACER (not serviced)                        |
| 6                      | 181 065     | 1   |       | BOLT, 1/4 - 20 x 1.00                        |
| 7                      | 2946 079    | 1   |       | GROMMET, Oil Filler Tube                     |
| 8                      | 2960 622    | 1   |       | CAP, Oil Filler Pipe                         |
| 9                      |             |     |       | TUBE, Oil Filler                             |
|                        | 4089 625    | 1   |       | 318 & 360 Eng. 1979-80                       |
|                        | 4210 080    | 1   |       | 1981   |
|                        | 4089 627    | 1   | MB3,4 | 440 Eng. 1979                                |
| 10                     | 2946 079    | 1   |       | GROMMET, Oil Filler Tube                     |
| 11                     | 4112 292    | 1   |       | CLAMP  |
| 12                     | 2960 622    | 1   |       | CAP, Oil Filler Pipe                         |
| 13                     | 5214 871    | 1   |       | TUBE, Oil Filler - Upper                     |
| 14                     | 5214 878    | 2   |       | CLAMP, Oil Filler Tube Hose                  |
| 15                     | 5214 873    | 1   |       | TUBE, Oil Filler - Lower                     |
| 16                     | 5214 876    | 1   |       | GASKET, Oil Filler Tube                      |
| 17                     | 5214 874    | 1   |       | HOSE, Oil Filler Tube                        |
| 18                     | 2960 622    | 1   |       | CAP, Oil Filler Tube                         |
| 19                     | 4173 223    | 1   |       | TUBE, Oil Filler                             |
| 20                     | 2946 079    | 1   |       | GROMMET, C/Case Vent Air Cleaner             |
| 21                     | 5214 561    | 1   |       | AIR CLEANER, C/Case Vent                     |
| 22                     |             |     |       | HOSE, C/Case Air Cleaner to Eng. Air Cleaner |
|                        | 3512 778    | 1   |       | 1978-79-80                                   |
|                        | 4026 146    | 1   |       | 225 Eng. 1981                                |
|                        | 3830 209    | 1   |       | 318 & 360 Eng. 1981                          |
| 23                     | 4026 136    | 1   |       | HOSE, C/Case Vent Valve to Carb.             |
| 24                     | 3671 076    | 1   |       | VALVE, Closed Vent System (PCV)              |
| 25                     | 3751 510    | 1   |       | GROMMET, Vent Valve                          |
| 26                     | 2946 051    | 1   |       | CAP, Cyl. Head Cover Oil Filler              |
|                        | 2946 052    | 1   | D1    | 360 Eng. Hi Perf. (Chrome)                   |

|               |                                       |                                     |                                     |
|---------------|---------------------------------------|-------------------------------------|-------------------------------------|
| <b>LIGHT</b>  | A = All Sport Utility (Ramcharger).   | B = All Compact Models.             | D = Conventional Cab.               |
| <b>DUTY</b>   | AD = 2 Wheel Drive Only (Ramcharger). | CB-MB = Compact Front Section Only. | W = Conventional Cab 4 Wheel Drive. |
| <b>CODES:</b> | AW = 4 Wheel Drive Only (Ramcharger). | P = Forward Control Chassis.        | M = Motor Home.                     |

**MEDIUM-HEAVY CODES:** XNT = Low Cab Forward. D = Conventional Cab. S = School Bus. W = 4-Wheel Drive.

AR=Use as Required

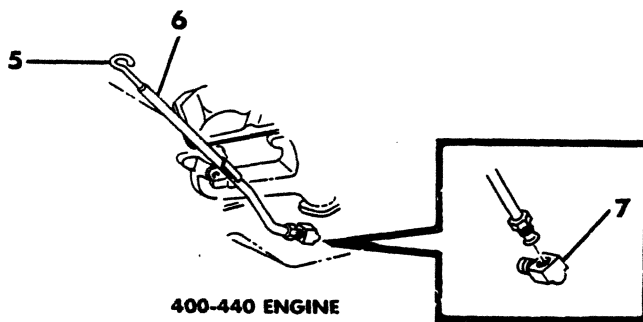
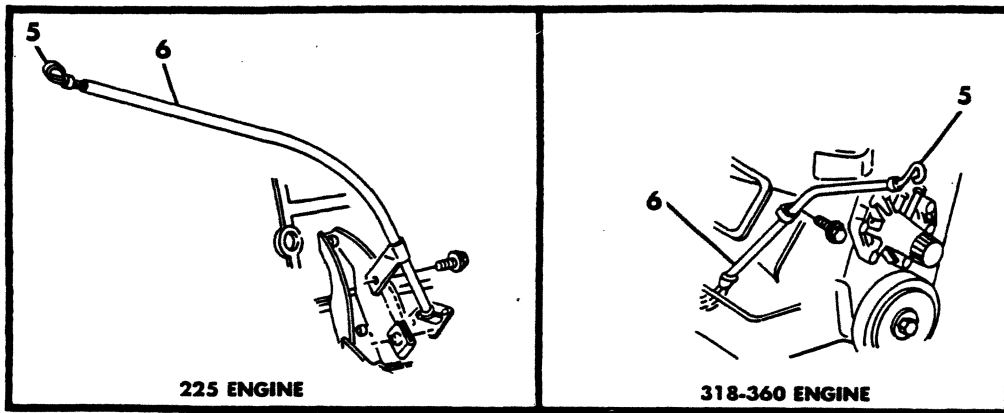
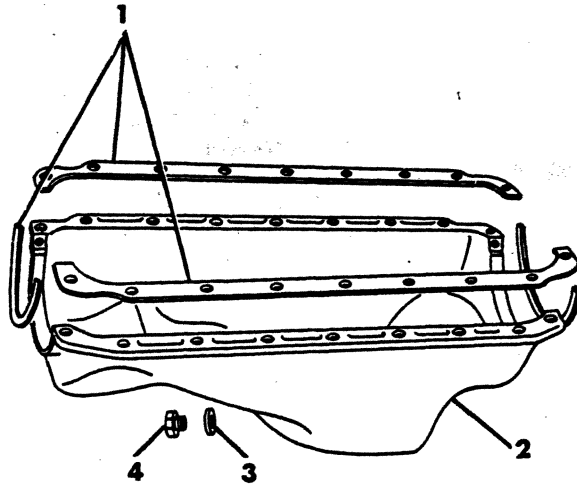
# =New Part Number

Printed in U.S.A.

June, 1982

OIL PAN & INDICATOR

8310 4G1A



| ITEM                           | PART NUMBER | QTY | MODEL      | DESCRIPTION  |
|--------------------------------|-------------|-----|------------|--|
| <b>OIL PAN &amp; INDICATOR</b> |             |     |            |  |
| 1                              |             |     |            | <b>GASKET SET</b>                                    |
|                                | 4049 287    | 1   |            | 225 Eng.   |
|                                | 3780 200    | 1   |            | 318 Eng.   |
|                                | 3549 388    | 1   |            | 360 Eng.   |
|                                | 2658 685    | 1   |            | 400 & 440 Eng.                                       |
| 2                              |             |     |            | <b>PAN, Oil</b>                                      |
|                                | 3462 328    | 1   |            | 225 Eng.   |
|                                | 3462 334    | 1   |            | 318 Eng.   |
|                                | 3577 803    | 1   |            | 360 Eng.   |
|                                | 4027 236    | 1   |            | 400 & 440 Eng.                                       |
|                                | 6031 413    | AR  |            | <b>SCREW w/WASHER, Oil Pan Attaching</b>             |
|                                | 180 078     | 6   |            | 225 Eng. - Long                                      |
|                                | 6022 271    | 18  |            | 400 & 440 Eng.                                       |
|                                | 6028 581    | 18  |            | 440-3 Eng.   |
|                                | 3751 286    | 1   |            | <b>BAFFLE, Pan Scraper 440-3 Eng. (not shown)</b>    |
| 3                              | 3769 935    | 1   |            | <b>GASKET, Drain Plug</b>                            |
| 4                              | 4095 544    | 1   |            | <b>PLUG, Drain</b>                                   |
| 5                              |             |     |            | <b>INDICATOR, Oil Level</b>                          |
|                                | 3497 030    | 1   | B1,2,3-CB3 | 225 Eng. 1978  |
|                                | 3496 958    | 1   | A-D-W      | 225 Eng. 1978  |
|                                | 3497 030    | 1   |            | 225 Eng. 1979-80-81                                  |
|                                | 3497 031    | 1   | B-CB-MB    | 318 & 360 Eng.                                       |
|                                | 3496 960    | 1   | A-D-W      | 318 & 360 Eng.                                       |
|                                | 4089 656    | 1   | B-CB-MB    | 400 & 440 Eng. 1978                                  |
|                                | 3496 958    | 1   | A-D-W      | 400 & 440 Eng. 1978                                  |
|                                | 4089 656    | 1   | MB3,4      | 440 Eng. 1979  |
| 6                              |             |     |            | <b>TUBE, Oil Level Indicator</b>                     |
|                                | 3462 511    | 1   | B1,2,3-CB3 | 225 Eng. 1978  |
|                                | 3496 957    | 1   | A-D-W      | 225 Eng. 1978  |
|                                | 4117 672    | 1   |            | 225 Eng. 1979-80-81                                  |
|                                | 4036 346    | 1   | B-CB-MB    | 318 & 360 Eng. 1978-79                               |
|                                | 4241 267    | 1   | B-CB-MB    | 1980-81  |
|                                | 3496 959    | 1   | A-D-W      | 318 & 360 Eng.                                       |
|                                | 3822 877    | 1   | B-CB-MB    | 400 & 440 Eng. 1978                                  |
|                                | 3735 103    | 1   | A-D-W      | 400 & 440 Eng. 1978                                  |
|                                | 3827 877    | 1   | MB3,4      | 440 Eng. 1979  |
| 7                              | 137 423     | 1   |            | <b>ELBOW, Indicator Tube Mtg. 400 &amp; 440 Eng.</b> |

|               |                                       |                                     |                                     |
|---------------|---------------------------------------|-------------------------------------|-------------------------------------|
| <b>LIGHT</b>  | A = All Sport Utility (Ramcharger).   | B = All Compact Models.             | D = Conventional Cab.               |
| <b>DUTY</b>   | AD = 2 Wheel Drive Only (Ramcharger). | CB-MB = Compact Front Section Only. | W = Conventional Cab 4 Wheel Drive. |
| <b>CODES:</b> | AW = 4 Wheel Drive Only (Ramcharger). | P = Forward Control Chassis.        | M = Motor Home.                     |

**MEDIUM-HEAVY CODES:** XNT = Low Cab Forward. D = Conventional Cab. S = School Bus. W = 4-Wheel Drive.

AR=Use as Required

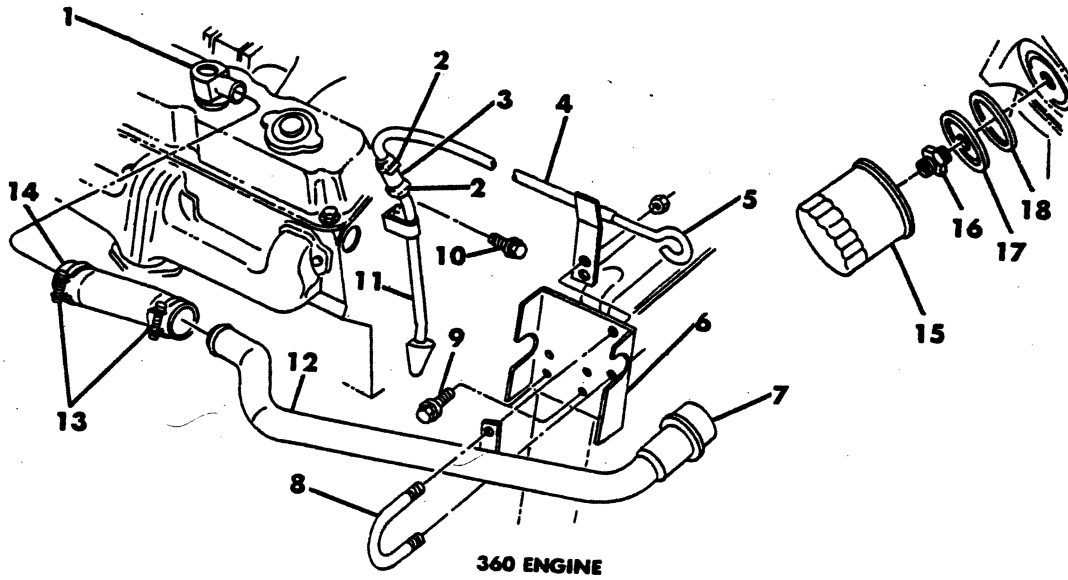
#=New Part Number

Printed in U.S.A.

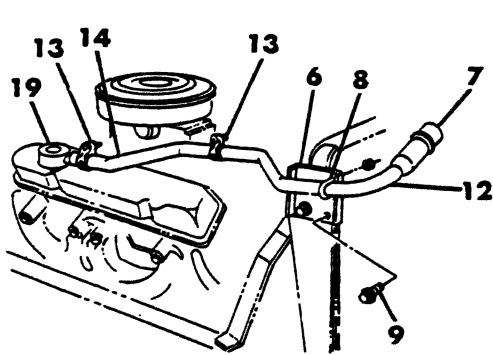
June, 1982

OIL PAN, INDICATOR & FILTER  
MOTOR HOME

8310 410

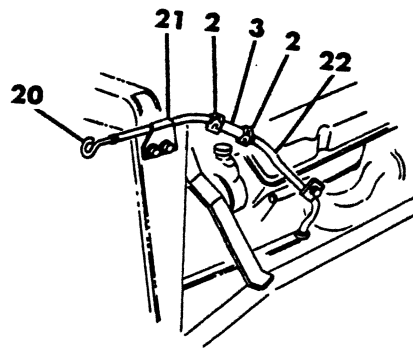


360 ENGINE

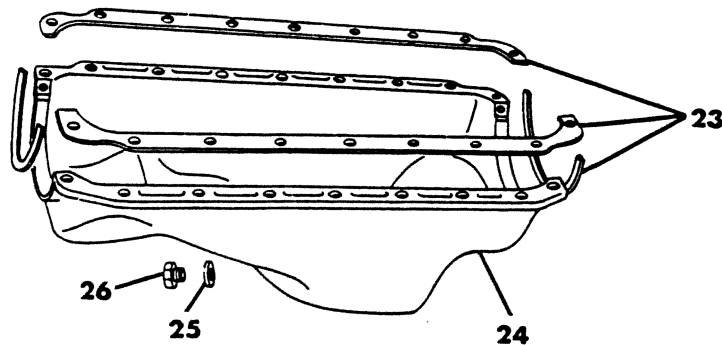


RIGHT

440 ENGINE



LEFT



| ITEM  | PART NUMBER | QTY | MODEL | DESCRIPTION                                       |
|---|-------------|-----|-------|---|
| <b>OIL PAN, INDICATOR &amp; FILTER<br/>MOTOR HOME</b> |             |     |       |   |
| 1   | 4031 127    | 1   |       | ADAPTOR, Oil Filler & C/Case Air Cleaner 360 Eng. |
| 2   | 2448 770    | 2   |       | CLAMP, Oil Level Indicator Tube Hose              |
| 3   | 3780 796    | 1   |       | HOSE, Oil Level Indicator Tube                    |
| 4   | 3736 868    | 1   |       | TUBE, Oil Level Indicator - Upper - 360 Eng.      |
| 5   | 3821 256    | 1   |       | INDICATOR, Oil Level - 360 Eng.                   |
| 6   | 3733 696    | 1   |       | BRACKET, Oil Filler Pipe                          |
| 7   | 2960 622    | 1   |       | CAP, Oil Filler Pipe                              |
| 8   | 6030 259    | 1   |       | U-BOLT  |
| 9   | 181 063     | 2   |       | SCREW   |
| 10  | 6025 250    | 1   |       | SCREW   |
| 11  | 3736 867    | 1   |       | TUBE, Oil Level Indicator - Lower - 360 Eng.      |
| 12  | 4112 898    | 1   |       | PIPE, Oil Filler                                  |
|   | 2946 079    | 1   |       | GROMMET, Oil Filler Pipe                          |
| 13  | 870 469     | 2   |       | CLAMP   |
| 14  | 3640 982    | 1   |       | HOSE, Oil Filler Pipe to Adapter                  |
| 15  | 3549 957    | 1   |       | FILTER, Oil                                       |
| 16  | 3671 602    | 1   |       | ADAPTOR - 360 Eng.                                |
| 17  | 2402 103    | 1   |       | PLATE, Adaptor - 360 Eng.                         |
| 18  | 3671 314    | 1   |       | GASKET, Oil Filter - 360 Eng.                     |
| 19  | 3640 980    | 1   |       | ADAPTOR, Oil Filler C/Case Air Cleaner - 440 Eng. |
| 20  | 3821 259    | 1   |       | INDICATOR, Oil Level - 440 Eng.                   |
| 21  | 3733 737    | 1   |       | TUBE, Oil Level Indicator - Upper - 440 Eng.      |
| 22  | 3733 736    | 1   |       | TUBE, Oil Level Indicator - Lower - 440 Eng.      |
| 23  |             |     |       | GASKET SET  |
|   | 3549 388    | 1   |       | 360 Eng.  |
|   | 2658 685    | 1   |       | 440 Eng..   |
| 24  |             |     |       | PAN, Oil  |
|   | 4095 055    | 1   |       | 360 Eng.  |
|   | 4095 060    | 1   |       | 440 Eng.  |
|   | 6031 413    | AR  |       | SCREW w/WASHER, Oil Pan Attaching - 360 Eng.      |
|   | 6025 926    | AR  |       |   |
|   | 6028 581    | AR  |       | 440 Eng.  |
| 25  | 3769 935    | 1   |       | GASKET, Drain Plug                                |
| 26  | 4095 544    | 1   |       | PLUG, Drain                                       |

|               |                                       |                                     |                                     |
|---------------|---------------------------------------|-------------------------------------|-------------------------------------|
| <b>LIGHT</b>  | A = All Sport Utility (Ramcharger).   | B = All Compact Models.             | D = Conventional Cab.               |
| <b>DUTY</b>   | AD = 2 Wheel Drive Only (Ramcharger). | CB-MB = Compact Front Section Only. | W = Conventional Cab 4 Wheel Drive. |
| <b>CODES:</b> | AW = 4 Wheel Drive Only (Ramcharger). | P = Forward Control Chassis.        | M = Motor Home.                     |

**MEDIUM-HEAVY CODES:** XNT = Low Cab Forward. D = Conventional Cab. S = School Bus. W = 4-Wheel Drive.

AR=Use as Required

# = New Part Number

Printed in U.S.A.

June, 1982

**OIL PUMP, PAN, INDICATOR & FILTER  
446 ENGINE  
MOTOR HOME**

**ILLUSTRATION NOT AVAILABLE AT TIME OF PUBLICATION**



| ITEM | PART NUMBER | QTY | MODEL | DESCRIPTION |
|------|-------------|-----|-------|-------------|
|------|-------------|-----|-------|-------------|

**OIL PUMP, PAN, INDICATOR & FILTER  
446 ENGINE  
MOTOR HOME**

NOTE: Parts not specified are serviced by International Harvester.

|    |          |    |  |                                   |
|----|----------|----|--|-----------------------------------|
| 1  |          | 1  |  | PUMP, Oil                         |
|    | 181 088  | 2  |  | BOLT, Oil Pump Mtg.               |
|    | 121 367  | 2  |  | WASHER, Oil Pump Mtg. Bolt        |
| 2  |          | 2  |  | PIN, Oil Pump Dowel               |
| 3  | 4167 227 | 1  |  | PIPE, Oil Return                  |
|    |          | 1  |  | GASKET, Oil Return Pipe           |
| 4  |          | 1  |  | VALVE, Oil Relief                 |
| 5  |          | 1  |  | SPRING, Relief Valve              |
| 6  |          | 1  |  | GASKET, Oil Pump Cover            |
| 7  |          | 1  |  | COVER (serv. in Oil Pump Assy.)   |
| 8  | 4167 367 | 1  |  | ELBOW, Oil Filler Tube            |
| 9  | 2448 763 | 2  |  | CLAMP                             |
| 10 | 4167 364 | 1  |  | TUBE, Engine Oil Filler           |
| 11 |          | 1  |  | CAP, Oil Filler Pipe              |
| 12 | 4167 368 | 1  |  | INDICATOR, Oil Level              |
| 13 | 4167 365 | 1  |  | TUBE, Oil Lever Indicator - Upper |
| 14 | 2448 770 | 2  |  | CLAMP                             |
| 15 | 4203 421 | 1  |  | HOSE, Oil Lever Indicator         |
| 16 | 4167 366 | 1  |  | TUBE, Oil Lever Indicator - Lower |
| 17 | 4167 338 | 1  |  | TUBE & GASKET, Oil Filler         |
| 18 |          | 1  |  | GASKET, Oil Pan                   |
| 19 | 4167 224 | 1  |  | PAN, Oil                          |
|    |          | 22 |  | BOLT, Oil Pan Attaching           |
| 20 |          | 1  |  | PLUG, Oil Pan Drain               |
| 21 |          | 1  |  | GASKET, Oil Pan Drain Plug        |
| 22 |          | 1  |  | PLUG, 1/4 Sq. Head (not serviced) |
| 23 |          | 1  |  | GASKET, Oil Filter Base           |
| 24 |          | 1  |  | PLUG 1/2                          |
| 25 |          | 1  |  | BASE, Oil Filter                  |
| 26 |          | 1  |  | FILTER, Oil                       |
| 27 |          | 1  |  | CONNECTOR, Oil Filter             |
| 28 |          | 1  |  | VALVE, PCV                        |
| 29 |          | 1  |  | GROMMET, PCV Valve                |

|               |                                       |                                     |                                     |
|---------------|---------------------------------------|-------------------------------------|-------------------------------------|
| <b>LIGHT</b>  | A = All Sport Utility (Ramcharger).   | B = All Compact Models.             | D = Conventional Cab.               |
| <b>DUTY</b>   | AD = 2 Wheel Drive Only (Ramcharger). | CB-MB = Compact Front Section Only. | W = Conventional Cab 4 Wheel Drive. |
| <b>CODES:</b> | AW = 4 Wheel Drive Only (Ramcharger). | P = Forward Control Chassis.        | M = Motor Home.                     |

**MEDIUM-HEAVY CODES:** XNT = Low Cab Forward. D = Conventional Cab. S = School Bus. W = 4-Wheel Drive.

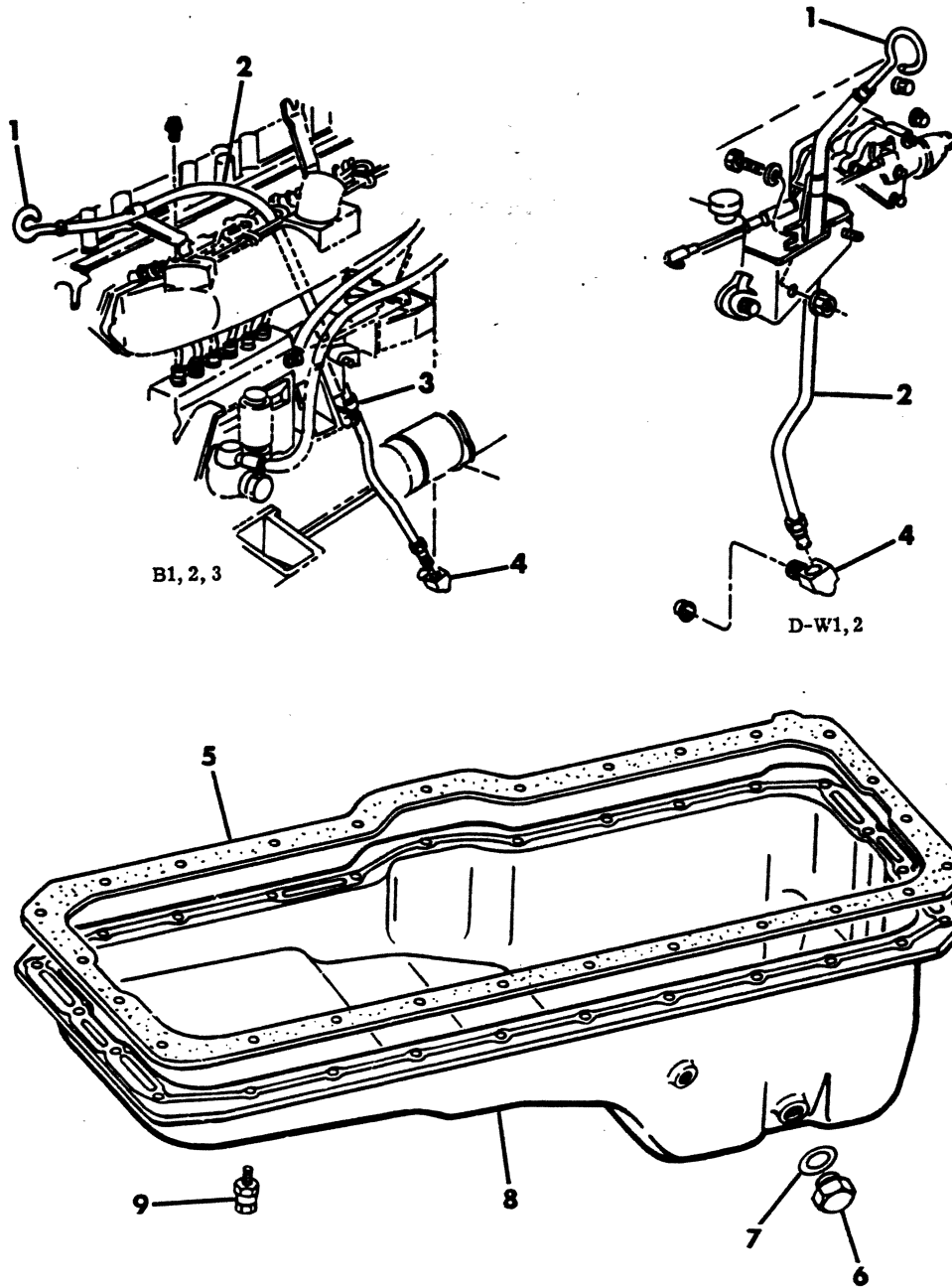
AR=Use as Required

# = New Part Number

Printed in U.S.A.

June, 1982

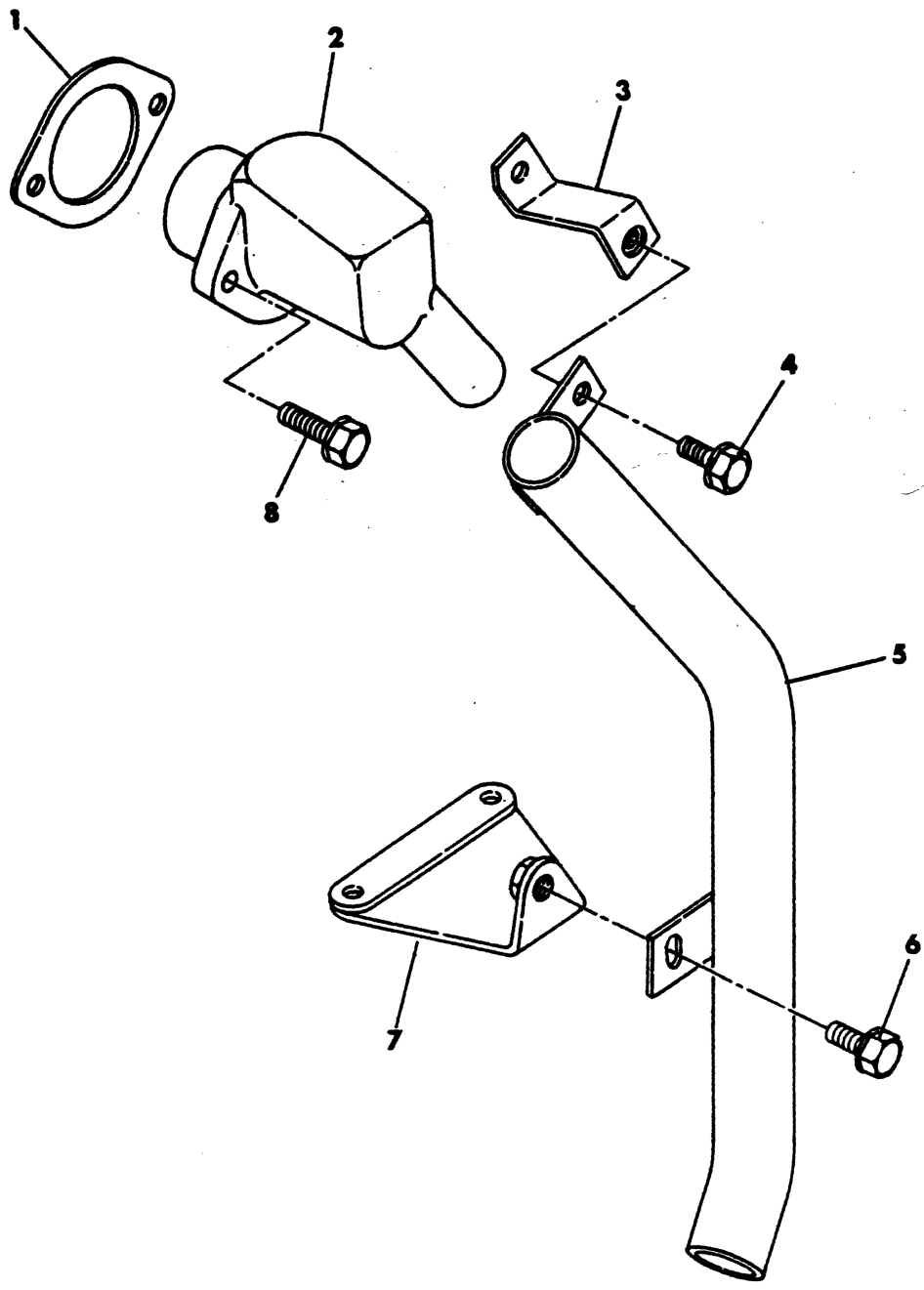
OIL PAN AND INDICATOR  
MMC DIESEL



| ITEM  | PART NUMBER | QTY | MODEL  | DESCRIPTION               |
|---|-------------|-----|--------|---------------------------|
| <b>OIL PAN AND INDICATOR<br/>MMC DIESEL</b> |             |     |        |                           |
| 1   | 4088 455    | 1   | B1,2,3 | INDICATOR, Oil Level      |
|   | 4086 489    | 1   | D-W1,2 | 1978-79                   |
|   | 4167 863    | 1   | D-W1,2 | 1980                      |
| 2   | 4088 456    | 1   | B1,2,3 | TUBE, Oil Level Indicator |
|   | 4088 098    | 1   | D-W1,2 | 1978                      |
|   | 4118 000    | 1   | D-W1,2 | 1979-80                   |
| 3   | 4112 887    | 1   | B1,2,3 | CLIP                      |
| 4   | 137 423     | 1   |        | ELBOW, Oil Level Tube     |
| 5   | ME00 7217   | 1   |        | GASKET, Oil Pan           |
| 6   | MH03 7126   | 1   |        | PLUG, Drain               |
| 7   | MH03 5018   | 1   |        | GASKET, Drain Plug        |
| 8   | ME00 7216   | 1   |        | PAN, Oil                  |
| 9   | MS24 0211   | 3   |        | BOLT w/WASHER 8x25        |
|   | MF24 1253   | 23  |        | BOLT w/WASHER 8x20        |

|  |                                       |                                     |                                     |
|--|---------------------------------------|-------------------------------------|-------------------------------------|
| <b>LIGHT</b>   | A = All Sport Utility (Ramcharger).   | B = All Compact Models.             | D = Conventional Cab.               |
| <b>DUTY</b>  | AD = 2 Wheel Drive Only (Ramcharger). | CB-MB = Compact Front Section Only. | W = Conventional Cab 4 Wheel Drive. |
| <b>CODES:</b>  | AW = 4 Wheel Drive Only (Ramcharger). | P = Forward Control Chassis.        | M = Motor Home.                     |
| <b>MEDIUM-HEAVY CODES:</b> XNT = Low Cab Forward. D = Conventional Cab. S = School Bus. W = 4-Wheel Drive. |                                       |                                     |                                     |
| AR=Use as Required   |                                       | # = New Part Number                 | Printed in U.S.A.                   |
|  |                                       |                                     | June, 1982                          |

## BREATHER MMC DIESEL



| ITEM | PART NUMBER | QTY | MODEL | DESCRIPTION |
|------|-------------|-----|-------|-------------|
|------|-------------|-----|-------|-------------|

**BREATHER  
MMC DIESEL**

|   |           |   |  |                        |
|---|-----------|---|--|------------------------|
| 1 | ME00 7082 | 1 |  | GASKET, Breather       |
| 2 | ME00 7261 | 1 |  | BREATHER               |
| 3 | ME93 0203 | 1 |  | STAY, Breather Pipe    |
| 4 | MF24 1253 | 1 |  | BOLT w/WASHER 8x20     |
| 5 | ME00 7262 | 1 |  | PIPE, Breather         |
| 6 | MF24 3651 | 1 |  | BOLT w/WASHER 8x20     |
| 7 | ME00 7263 | 1 |  | BRACKET, Breather Pipe |
| 8 | MF24 0057 | 2 |  | BOLT w/WASHER 8x30     |

|               |                                       |                                     |                                     |
|---------------|---------------------------------------|-------------------------------------|-------------------------------------|
| <b>LIGHT</b>  | A = All Sport Utility (Ramcharger).   | B = All Compact Models.             | D = Conventional Cab.               |
| <b>DUTY</b>   | AD = 2 Wheel Drive Only (Ramcharger). | CB-MB = Compact Front Section Only. | W = Conventional Cab 4 Wheel Drive. |
| <b>CODES:</b> | AW = 4 Wheel Drive Only (Ramcharger). | P = Forward Control Chassis.        | M = Motor Home.                     |

---

**MEDIUM-HEAVY CODES:** XNT = Low Cab Forward. D = Conventional Cab. S = School Bus. W = 4-Wheel Drive.

---

AR=Use as Required      # =New Part Number      Printed in U.S.A.      June, 1982

