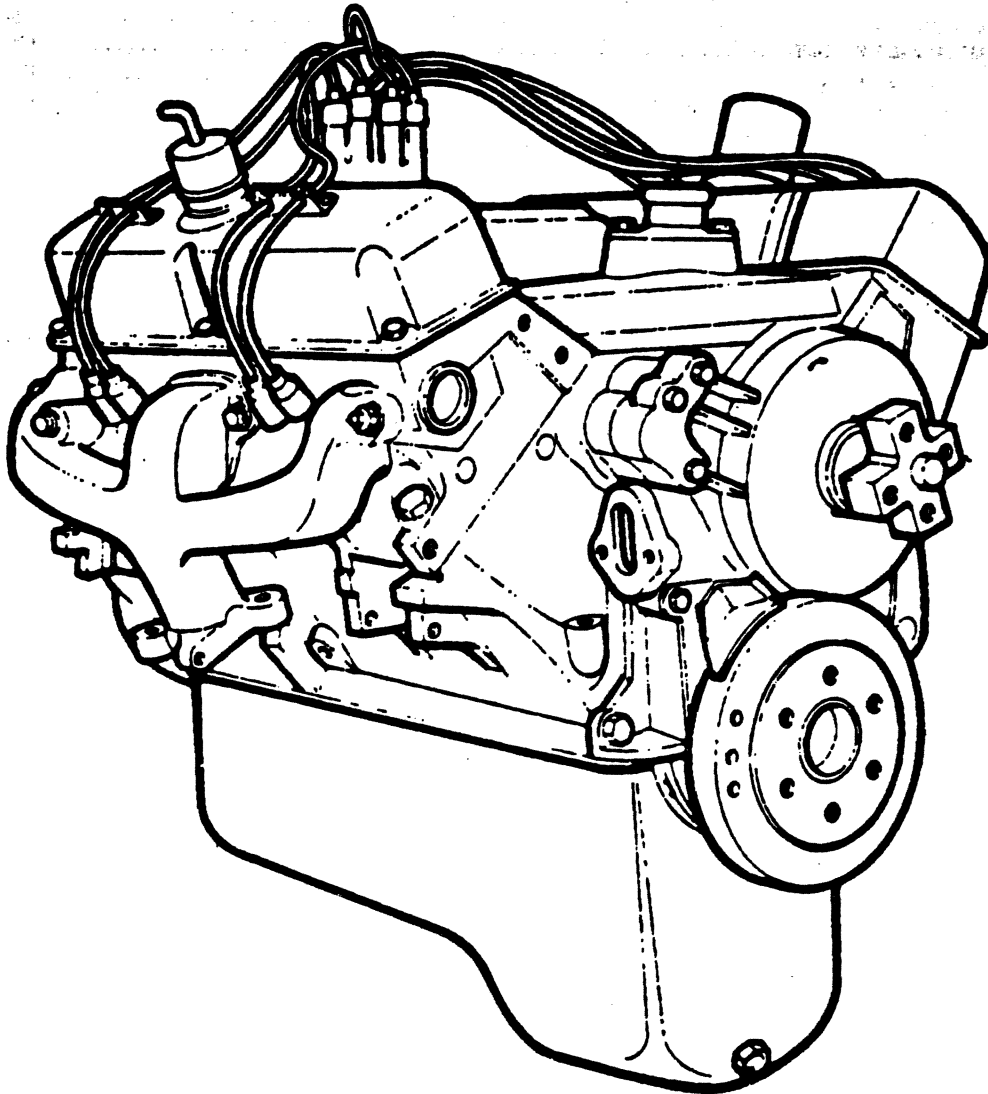


**GROUP 9C - ENGINE, 8 CYLINDER**

|  |             |
|--|-------------|
| CAMSHAFT, VALVES, ROCKER SHAFT, TIMING CHAIN .....             | Fig. 9C-500 |
| CRANKCASE, CAMSHAFT & TORQUE CONVERTER 446 ENGINE M4,5,6 ..... | Fig. 9C-910 |
| CRANKSHAFT, CONN. RODS, PISTONS, RINGS 446 ENGINE M4,5,6 ..... | Fig. 9C-930 |
| CRANKSHAFT, PISTONS AND RINGS .....                            | Fig. 9C-400 |
| CYLINDER HEAD & RELATED PARTS 446 ENGINE M4,5,6 .....          | Fig. 9C-920 |
| ENGINE ASSEMBLIES .....  | Fig. 9C-100 |
| ENGINE MOUNTINGS B-CB-MB .....                                 | Fig. 9C-700 |
| ENGINE MOUNTINGS A-D-W MODEL .....                             | Fig. 9C-725 |
| ENGINE MOUNTINGS 360 - 440 ENGINE MOTOR HOME .....             | Fig. 9C-730 |
| ENGINE MOUNTINGS 446 ENGINE M 4,5,6 .....                      | Fig. 9C-940 |
| EXTERNAL ENGINE .....  | Fig. 9C-200 |
| INTAKE & EXHAUST MANIFOLD 446 ENGINE M4,5,6 .....              | Fig. 9C-935 |
| MANIFOLD WITH HEAT CONTROL .....                               | Fig. 9C-300 |
| TIMING INDICATOR .....   | Fig. 9C-750 |
| TIMING INDICATOR MOTOR HOME .....                              | Fig. 9C-775 |
| TRANS. AUXILIARY OIL COOLER & LINES B-CB-MB 1978-79 .....      | Fig. 9C-875 |
| TRANS. AUXILIARY OIL COOLER & LINES A-D-W MODEL 1978-79 .....  | Fig. 9C-885 |
| TRANS. AUXILIARY OIL COOLER & LINES 1980-81 .....              | Fig. 9C-895 |
| TRANS. AUXILIARY OIL COOLER & LINES MOTOR HOME .....           | Fig. 9C-896 |

ENGINE ASSEMBLIES

8300 100



| DESCRIPTION  | 318 ENG. | 360 ENG. | 400 ENG. | 440 ENG. |
|--|----------|----------|----------|----------|
| <b>ENGINE ASSEMBLIES</b>   |          |          |          |          |
| <b>ENGINE ASSEMBLY AS SHIPPED: More complete than an E.L.A. Contains Int. Manifold, Exh. Manifold, Distributor, Flywheel or Torque Converter, Water Pump Housing and Water Pump, Spark Plugs &amp; Secondary Wiring.</b> |          |          |          |          |
| <b>ENGINE LESS ACCESSORIES: Contains Short Engine Assy., Cyl. Head, Camshaft and Lifters, Timing Chain and Cover.</b>  |          |          |          |          |
| <b>SHORT ENGINE ASSY.: Cyl. Block w/Pistons, Rings and Connecting Rods, Crankshaft &amp; Camshaft Bearings.</b>  |          |          |          |          |
| <b>FITTED CASE: Cyl. Block w/Pistons, Rings &amp; Connecting Rods. Crankshaft Not Included.</b>  |          |          |          |          |
| <b>ENGINE AS SHIPPED</b>   |          |          |          |          |
| B1 w/727 Trans. 1979   | 1        | 4088 252 |          |          |
| D1-AD1 w/727 Trans. w/Cat. Conv. & Torq. Conv. Lock Up<br>1979   | 1        | 4088 252 |          |          |
| 360-1 Eng. 4 Bbl. 1979   | 1        |          | 4167 796 |          |
| 360-3 Eng. 1979  | 1        |          | 4088 248 |          |
| 440-3 Eng. 1979  | 1        |          |          | 4088 271 |
| <b>ENGINE SHORT</b>  |          |          |          |          |
| 1978-79  | 1        | 4027 501 |          | 4095 085 |
| 1980   | 1        | 5214 643 |          |          |
| 1981   | 1        | 4227 897 |          |          |
| 360 Eng.   | 1        |          | 4201 303 |          |
| 360-3 Eng.   | 1        |          | 4201 304 |          |
| w/Auto. Trans.   | 1        |          |          | 4027 506 |
| w/Man. Trans.  | 1        |          |          | 3769 401 |
| 440-3 Eng. 1978-79   | 1        |          |          | 4027 511 |
| <b>Low Compression</b>   |          |          |          |          |
| 1978-79  | 1        | 4027 502 |          |          |
| 1980   | 1        | 4201 301 |          |          |
| 360-3 Eng. 1978-79   | 1        |          | 4027 505 |          |
| 1980   | 1        |          | 4201 305 |          |
| <b>ENGINE FITTED CASE</b>  |          |          |          |          |
| 1978-79  | 1        | 4071 653 | 4071 655 | 4071 657 |
| 1980   | 1        | 5214 644 |          |          |
| 1981   | 1        | 4227 895 |          |          |
| 1980-81  | 1        |          | 4201 307 |          |
| 440-3 Eng. 1978-79   | 1        |          |          | 4071 658 |
| <b>Low Compression</b>   |          |          |          |          |
| 1978-79  | 1        | 4071 654 |          |          |
| 1980   | 1        | 4201 306 |          |          |
| 1981   | 1        | 4105 991 |          |          |

**LIGHT** A = All Sport Utility (Ramcharger).

B = All Compact Models.

D = Conventional Cab.

**DUTY** AD = 2 Wheel Drive Only (Ramcharger).

CB-MB = Compact Front Section Only.

W = Conventional Cab 4 Wheel Drive.

**CODES:** AW = 4 Wheel Drive Only (Ramcharger).

P = Forward Control Chassis.

M = Motor Home.

**MEDIUM-HEAVY CODES:** XNT = Low Cab Forward. D = Conventional Cab. S = School Bus. W = 4-Wheel Drive.

AR=Use as Required

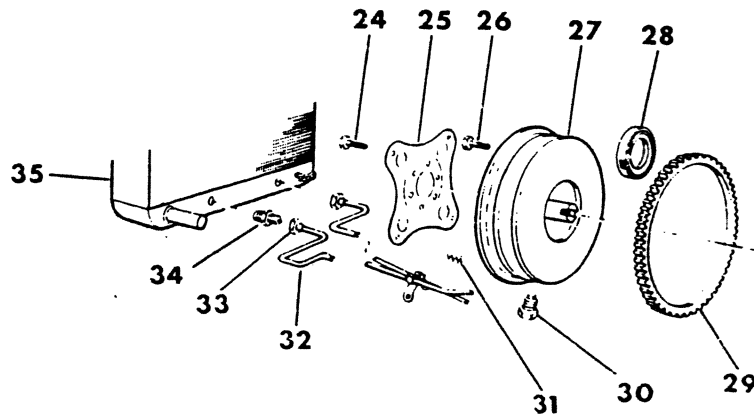
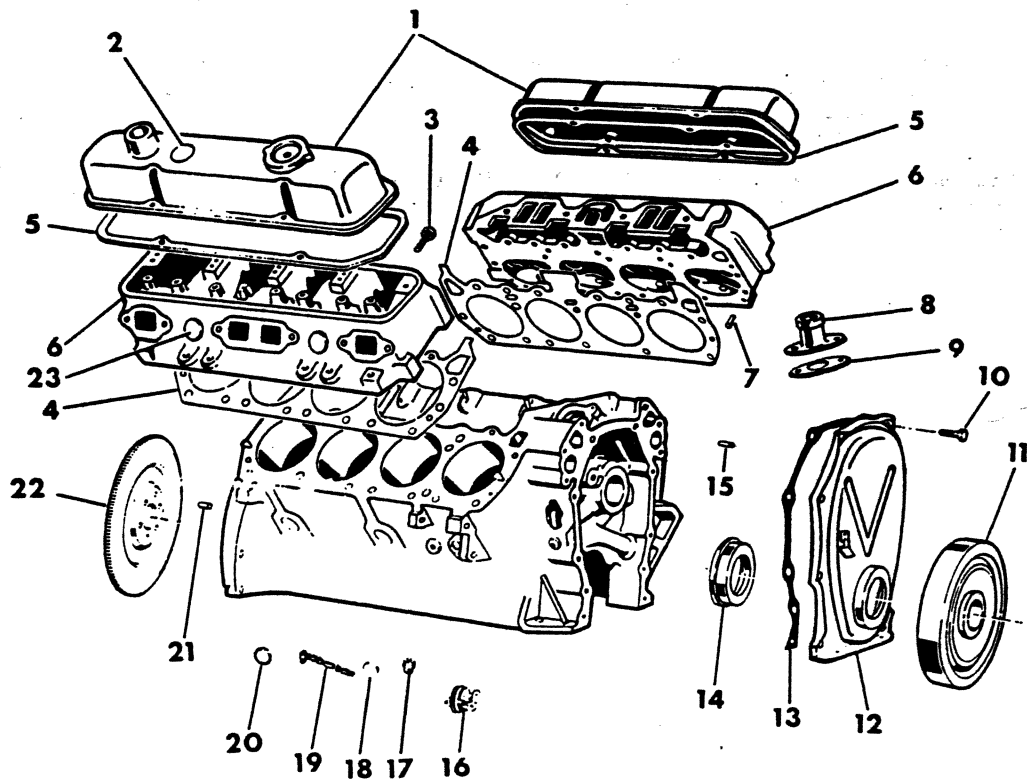
# =New Part Number

Printed in U.S.A.

June, 1982

## EXTERNAL ENGINE

8309 200A



| DESCRIPTION                                      | 318 ENG. | 360 ENG. | 400 ENG. | 440 ENG. |
|--|----------|----------|----------|----------|
| <b>EXTERNAL ENGINE</b>                           |          |          |          |          |
| GASKET SET, Engine - Upper                       | 1        | 4049 264 |          |          |
| Consists of:                                     |          |          |          |          |
| GASKET, Cyl. Head                                |          |          |          |          |
| GASKET, Cyl. Head Cover                          |          |          |          |          |
| GASKET, Exhaust Pipe Flange                      |          |          |          |          |
| SHIELD, Valve Stem Oil                           |          |          |          |          |
| SHIELD, Valve Stem Oil                           |          |          |          |          |
| SEAL, Valve Guide - Intake                       |          |          |          |          |
| GASKET SET, Engine - Upper                       | 1        | 4049 265 |          |          |
| Consists of:                                     |          |          |          |          |
| GASKET, Cyl. Head                                |          |          |          |          |
| GASKET, Cyl. Head Cover                          |          |          |          |          |
| GASKET, Cyl. Head Cover Oil Filler Pipe          |          |          |          |          |
| GASKET, Exhaust Pipe Flange                      |          |          |          |          |
| SHIELD, Valve Stem Oil - Exhaust                 |          |          |          |          |
| SEAL, Valve Guide - Intake                       |          |          |          |          |
| GASKET SET, Engine - Lower                       | 1        | 3837 644 | 3837 644 |          |
| Consists of:                                     |          |          |          |          |
| GASKET, Chain Case Cover                         |          |          |          |          |
| GASKET, Cyl. Water Outlet                        |          |          |          |          |
| GASKET, Water Pump Body                          |          |          |          |          |
| GASKET, Fuel Pump Flange                         |          |          |          |          |
| GASKET, Ignition Distributor                     |          |          |          |          |
| SEAL, Chain Case Cover Oil                       |          |          |          |          |
| O-RING, Ignition Distributor Housing             |          |          |          |          |
| GASKET, Intake Manifold                          | 1        | 3420027  |          |          |
| 3577303 - SEAL, Crankshaft Brg. Oil              | 2        | 3549392  |          |          |
| 1401336 - SEAL, Crankshaft Brg. Cap #5 Oil - Rt. |          |          |          |          |
| 1618681 - GASKET, Oil Pan                        | 2        | 3514157  |          |          |
| 3462386 - GASKET, Oil Pan End                    | 2        |          |          |          |
| GASKET SET, Engine - Upper                       | 1        |          | 3683 818 |          |
| Consists of:                                     |          |          |          |          |
| GASKET, Cyl. Head                                |          |          |          |          |
| GASKET, Cyl. Head Cover                          |          |          |          |          |
| GASKET, Exhaust Pipe Flange                      |          |          |          |          |
| SEAL, Exhaust Valve Guide                        |          |          |          |          |
| SEAL, Intake Valve Guide                         |          |          |          |          |
| GASKET SET, Engine - Upper                       | 1        |          |          | 3780 161 |
| Consists of:                                     |          |          |          |          |
| GASKET, Cyl. Head                                |          |          |          |          |
| GASKET, Cyl. Head Cover                          |          |          |          |          |
| GASKET, Exhaust Pipe Flange                      |          |          |          |          |
| SEAL, Exhaust Valve Guide                        |          |          |          |          |
| SEAL, Intake Valve Guide                         |          |          |          |          |
| GASKET SET, Engine - Lower                       | 1        |          | 3837 645 | 3837 645 |
| Consists of:                                     |          |          |          |          |
| GASKET, Chain Case Cover                         |          |          |          |          |
| GASKET, Cyl. Water Outlet Elbow                  |          |          |          |          |
| GASKET, Water Pump Body                          |          |          |          |          |

LIGHT A = All Sport Utility (Ramcharger).

B = All Compact Models.

D = Conventional Cab.

DUTY AD = 2 Wheel Drive Only (Ramcharger).

CB-MB = Compact Front Section Only.

W = Conventional Cab 4 Wheel Drive.

CODES: AW = 4 Wheel Drive Only (Ramcharger).

P = Forward Control Chassis.

M = Motor Home.

MEDIUM-HEAVY CODES: XNT = Low Cab Forward. D = Conventional Cab. S = School Bus. W = 4-Wheel Drive.

AR=Use as Required

# =New Part Number

Printed in U.S.A.

June, 1982

# 1978-81 LIGHT DUTY TRUCK PARTS CATALOG

ENGINE, 8 CYLINDER

| DESCRIPTION                           |  | 318 ENG. | 360 ENG. | 400 ENG. | 440 ENG. |
|---------------------------------------|--|----------|----------|----------|----------|
| <b>EXTERNAL ENGINE</b>                |  |          |          |          |          |
| GASKET, Water Pump to Cyl. Block      |  |          |          |          |          |
| GASKET, Fuel Pump Flange              |  |          |          |          |          |
| GASKET, Ignition Distributor          |  |          |          |          |          |
| GASKET, Oil Pump Body                 |  |          |          |          |          |
| SEAL, Oil Pump Body                   |  |          |          |          |          |
| GASKET, Oil Pressure Relief Valve Cap |  |          |          |          |          |
| GASKET, Oil Pan                       |  |          |          |          |          |
| SEAL, Chain Case Cover Oil            |  |          |          |          |          |
| O-RING, Ignition Distributor Housing  |  |          |          |          |          |
| 1                                     | COVER, Cylinder Head                                       |          |          |          |          |
|                                       | Right  | 1        | 4100 558 | 4100 558 |          |
|                                       | Left   | 1        | 4006 302 | 4006 302 |          |
|                                       | 360 Eng. Hi Perf. (Chrome Plated) Right                    | 1        |          | 4115 271 |          |
|                                       | 360 Eng. Hi Perf. (Chrome Plated) Left                     | 1        |          | 4115 272 |          |
|                                       | 360-3 Eng. CB-MB4 Left                                     | 1        |          | 4006 302 |          |
|                                       | 360-3 Eng. M3,4 Left                                       | 1        |          | 4006 304 |          |
|                                       | B-CB-MB3 Right   | 1        |          | 3830 165 | 3830 165 |
|                                       | B-CB-MB3 Left  | 1        |          | 3830 164 | 3830 164 |
|                                       | A-D-W Right  | 1        |          | 4006 309 | 4006 309 |
|                                       | A-D-W Left   | 1        |          | 4006 311 | 4006 311 |
|                                       | 440-3 Eng. CB-MB4 Right                                    | 1        |          |          | 3830 165 |
|                                       | 440-3 Eng. CB-MB4 Left                                     | 1        |          |          | 3830 164 |
|                                       | 440-3 Eng. M3,4,5,6 Right                                  | 1        |          |          | 4006 309 |
|                                       | 440-3 Eng. M3,4,5,6 Left                                   | 1        |          |          | 4006 311 |
|                                       | SCREW, Cylinder Head Cover                                 | 10       | 6031 688 | 6031 688 |          |
| 2                                     | PLUG, Cyl. Head Cover A-D-W                                | 1        | 3640 339 | 3640 339 |          |
| 3                                     | BOLT, Cylinder Head  |          |          |          |          |
|                                       | 1/2 x 1 1/8  | 10       | 6031 045 | 6031 045 |          |
|                                       | 1/2 x 3 5/8  | 8        | 6031 101 | 6031 101 |          |
|                                       | 1/2 x 4 5/8  | 2        | 2463 260 | 2463 260 |          |
|                                       | 7/16 x 1 27/32   | 24       |          | 1739 605 | 1739 605 |
|                                       | 7/16 x 3 7/8   | 10       |          | 1739 606 | 1739 606 |
| 4                                     | GASKET, Cylinder Head                                      | 2        | 4131 142 | 4131 141 | 3614 824 |
|                                       | 440-3 Eng.   | 2        |          |          | 3751 218 |
| 5                                     | GASKET, Cylinder Head Cover                                | 2        | 2951 267 | 2951 267 | 4027 092 |
| 6                                     | HEAD, Cylinder   |          |          |          |          |
|                                       | w/Calif. 1978  | 2        | 4027 591 | 4027 594 |          |
|                                       | w/o Calif. 1978  | 2        | 4041 001 | 4041 003 |          |
|                                       | 1979-80-81   | 2        | 4100 405 | 4100 408 |          |
|                                       | 318 Eng. 4 Bbl. B3-CB3-D2,3-W2 HDC 1980-81                 | 2        | 5203 775 |          |          |
|                                       | 360 Eng. 4 Bbl. B3-CB3-MB3,4-D-W2,3,4 w/Calif. HDC 1980-81 | 2        |          | 4100 409 |          |
|                                       | 360 Eng. Hi Perf.  | 2        |          | 4041 003 |          |
|                                       | 360-3 Eng. w/Calif. CB-MB-M3,4                             | 2        |          | 3751 855 |          |
|                                       | 360-3 Eng. w/o Calif. CB-MB-M3,4                           | 2        |          | 3830 925 |          |
|                                       | 400-1 & 440-1 Eng.   | 2        |          | 3769 954 | 3769 954 |
|                                       | 440-3 Eng. CB-MB4-M3,4,5,6                                 | 2        |          |          | 3870 551 |
| 7                                     | DOWEL, Cyl. Block to Cyl. Head                             | 4        | 141 215  | 141 215  | 141 195  |
| 8                                     | CONNECTOR, Cyl. Water Outlet 1978                          | 1        | 3698 565 | 3698 565 | 3698 565 |

**LIGHT** A = All Sport Utility (Ramcharger). B = All Compact Models. D = Conventional Cab.  
**DUTY** AD = 2 Wheel Drive Only (Ramcharger). CB-MB = Compact Front Section Only. W = Conventional Cab 4 Wheel Drive.  
**CODES:** AW = 4 Wheel Drive Only (Ramcharger). P = Forward Control Chassis. M = Motor Home.

**MEDIUM-HEAVY CODES:** XNT = Low Cab Forward. D = Conventional Cab. S = School Bus. W = 4-Wheel Drive.

AR=Use as Required

# = New Part Number

Printed in U.S.A.

June, 1982

| DESCRIPTION            |   | 318 ENG. | 360 ENG. | 400 ENG. | 440 ENG. |
|------------------------|---|----------|----------|----------|----------|
| <b>EXTERNAL ENGINE</b> |   |          |          |          |          |
|                        | 1979-80-81  | 1        | 4100 490 | 4100 490 |          |
|                        | 440-3 Eng. MB4-M4,5,6                                     | 1        |          |          | 3751 958 |
| 9                      | GASKET, Cyl. Water Outlet Connector 1978                  | 1        | 3830 016 | 3830 016 | 3630 016 |
|                        | 1979-80-81  | 1        | 4173 461 | 4173 461 | 3830 016 |
| 10                     | SCREW, Chain Case Cover                                   |          |          |          |          |
|                        | 3/8 x 1   | 3        | 181 112  | 181 112  |          |
|                        |   | 1        | 9420 892 | 9420 892 |          |
|                        | 5/16 x 3/4  | 4        |          |          | 181 086  |
|                        | 3/4 x 3/4   | 4        |          |          | 181 086  |
| 11                     | DAMPER, Crank Vibration                                   |          |          |          |          |
|                        | 318 Eng.  | 1        | 4173 443 |          |          |
|                        | 360 Eng. w/Man. Trans. 1978                               | 1        |          | 3830 480 |          |
|                        | 1979-80-81  | 1        |          | 4173 445 |          |
|                        | 360 Eng. w/Auto. Trans. 1978                              | 1        |          | 4095 632 |          |
|                        | 1979-80-81  | 1        |          | 4173 447 |          |
|                        | 360-3 Eng. CB-MB4-M3,4 1978                               | 1        |          | 4095 632 |          |
|                        | 1979-80-81  | 1        |          | 4173 447 |          |
|                        | 400 Eng. w/Man. Trans. D-W-AW1                            | 1        |          |          | 3830 183 |
|                        | 400 Eng. w/Auto. Trans.                                   | 1        |          |          | 3830 184 |
|                        | 440 Eng. w/Auto. Trans.                                   | 1        |          |          | 3830 482 |
| 12                     | COVER, Chain Case   | 1        | 3769 964 | 3769 964 | 4100 436 |
| 13                     | GASKET, Chain Case Cover                                  | 1        | 2129 012 | 2129 012 | 3462 436 |
| 14                     | SEAL, Chain Case Cover Oil                                | 1        | 3830 109 | 3830 109 | 3830 109 |
| 15                     | DOWEL, Cyl. Block to Chain Case Cover                     | 2        |          |          | 141 195  |
| 16                     | HEATER, Engine Block                                      | 1        | 3755 677 | 3755 677 | 3755 677 |
| 17                     | PLUG, Cyl. Block Oil Line                                 | 1        | 3462 871 | 3462 871 |          |
|                        | Rear  | 2        |          |          | 6028 668 |
|                        | PLUG, Cyl. Block Oil Hole                                 | 1        | 3751 818 | 3751 818 |          |
| 18                     | PLUG, Cyl. Block Core Hole                                |          |          |          |          |
|                        | 1.635   | 9        | 2406 356 | 2406 356 |          |
|                        | 1.2585  | 1        | 3698 639 | 3698 639 |          |
|                        | 1.695   | AR       | 2406 575 | 2406 575 |          |
|                        | 1.635   | 6        |          |          | 2406 356 |
|                        | 1.695 440-3 Eng.  | AR       |          |          | 2406 575 |
| 19                     | CORD, Engine Block Heater                                 | 1        | 3614 314 | 3614 314 | 3614 314 |
| 20                     | O-RING, Engine Heater                                     | AR       | 6027 513 | 6027 513 | 6027 513 |
| 21                     | DOWEL, Cyl. Block to Clutch Hsg. or Torque Converter Hsg. |          |          |          |          |
|                        | Std.  | 2        | 1122 532 | 1122 532 | 1122 532 |
|                        | .007 over Center  | 2        | 1736 347 | 1736 347 | 1736 347 |
|                        | .014 over Center  | 2        | 1736 348 | 1736 348 | 1736 348 |
|                        | .021 over Center  | 2        | 1736 353 | 1736 353 | 1736 353 |
| 22                     | FLYWHEEL w/RING GEAR                                      |          |          |          |          |
|                        | 10 1/2" Clutch B1,2-D1                                    | 1        | 2264 597 |          |          |
|                        | 11" Clutch  | 1        | 2843 211 |          |          |
|                        | 11" Clutch P3   | 1        | 2952 847 |          |          |
|                        | 11" Clutch w/Calif.                                       | 1        |          | 3640 411 |          |
|                        | 11" Clutch w/o Calif.                                     | 1        |          | 3515 497 |          |
|                        | 12" Clutch D-W-AW1  | 1        |          |          | 2843 211 |
|                        | BOLT, Flywheel  | 6        | 6030 536 | 6030 536 | 6030 536 |

LIGHT A = All Sport Utility (Ramcharger).

B = All Compact Models.

D = Conventional Cab.

DUTY AD = 2 Wheel Drive Only (Ramcharger).

CB-MB = Compact Front Section Only.

W = Conventional Cab 4 Wheel Drive.

CODES: AW = 4 Wheel Drive Only (Ramcharger).

P = Forward Control Chassis.

M = Motor Home.

MEDIUM-HEAVY CODES: XNT = Low Cab Forward. D = Conventional Cab. S = School Bus. W = 4-Wheel Drive.

AR=Use as Required

#=New Part Number

Printed in U.S.A.

June, 1982

# 1978-81 LIGHT DUTY TRUCK PARTS CATALOG

ENGINE, 8 CYLINDER

| DESCRIPTION            |  | 318 ENG. | 360 ENG. | 400 ENG. | 440 ENG. |
|------------------------|--|----------|----------|----------|----------|
| <b>EXTERNAL ENGINE</b> |  |          |          |          |          |
| 23                     | PLUG, Cyl. Head Core Hole                            |          |          |          |          |
|                        | 1.2605   | 4        | 3698 639 | 3698 639 | 3698 639 |
|                        | 1.074  | AR       |          | 2899 097 | 2899 097 |
|                        | 1.012  | 4        |          | 2806 018 | 2806 018 |
|                        | 1.3280   | AR       |          | 2463 042 | 2463 042 |
| 24                     | SCREW, Drive Plate to Crank                          | 6        | 1949 424 | 1949 424 | 1949 424 |
| 25                     | PLATE, Torque Converter Drive                        | 1        | 4058 429 | 4058 429 | 4058 429 |
| 26                     | SCREW, Torque Converter Drive Plate                  | 4        | 1949 765 | 1949 765 | 1949 765 |
| 27                     | TORQUE CONVERTER                                     |          |          |          |          |
|                        | w/Torque Converter Stamped 488, 489, 385 or 386      | 1        | 4106 564 |          |          |
|                        | w/Torque Converter Stamped 408, 409, 506, 507 or 711 | 1        | 4106 573 |          |          |
|                        | w/Torque Converter Stamped 016, 017, 406 or 407      | 1        | 4186 051 |          |          |
|                        | w/Torque Converter Stamped 379 or 380                | 1        | 4106 563 | 4106 563 |          |
|                        | w/Torque Converter Stamped 415, 416, 494, 495 or 505 | 1        |          | 4106 572 |          |
|                        | w/Torque Converter Stamped 413, 414, 855 or 856      | 1        |          | 4186 877 |          |
|                        | w/Torque Converter Stamped 417, 418, 692 or 693      | 1        |          | 4106 576 |          |
|                        | w/Torque Converter Stamped 508, 509 or 581           | 1        |          | 4106 571 | 4106 571 |
| 28                     | SEAL, Torque Converter Impeller Hub                  |          |          |          |          |
|                        | w/727 Trans.   | 1        | 3515 137 | 3515 137 | 3515 137 |
|                        | w/904 & 908 Trans.                                   | 1        | 3515 138 | 3515 138 | 3515 138 |
| 29                     | GEAR, Flywheel Ring                                  |          |          |          |          |
|                        | 10 1/2" Clutch B1,2-D1                               | 1        | 1941 648 |          |          |
|                        | 11" Clutch   | 1        | 2843 214 | 2843 214 |          |
|                        | 12" Clutch D-W-AW1                                   | 1        |          | 2843 214 |          |
|                        | RING, Torque Converter Starter                       | 1        | 3515 203 | 3515 203 | 3515 203 |
| 30                     | PLUG, Drain  | 1        | 6030 035 | 6030 035 | 6030 035 |
| 31                     | SPRING, Torque Converter Overrunning Clutch Roller   | 8        | 2808 673 | 2808 673 | 2808 673 |
| 32                     | TUBE, Trans. Oil Cooler                              | AR       | 1843 253 | 1843 253 | 1843 253 |
| 33                     | NUT, Trans. Oil Cooler Tube                          | AR       | 1941 667 | 1941 667 | 1941 667 |
| 34                     | CONNECTOR, Trans. Oil Cooler Tube                    | AR       | 118 749  | 118 749  | 118 749  |
| 35                     | COOLER, Radiator Lower Trans. Oil                    |          |          |          |          |
|                        | w/Inc. Cooling 1978-79                               | 1        | 3781 804 | 3781 804 |          |
|                        | 1980-81  | 1        | 4140 381 | 4140 381 |          |
|                        | w/o Inc. Cooling 1978-79                             | 1        | 2998 996 | 2998 996 |          |
|                        | 1980   | 1        | 4140 383 | 4140 383 |          |
|                        | 1981   | 1        | 4140 382 | 4140 382 |          |
|                        | 360-3 Eng.   | 1        |          | 3781 804 |          |
|                        | 400 & 440 Eng.                                       | 1        |          | 3781 804 | 3781 804 |
|                        | P3   | 1        | 1903 791 |          |          |

**LIGHT** A = All Sport Utility (Ramcharger). B = All Compact Models. D = Conventional Cab.  
**DUTY** AD = 2 Wheel Drive Only (Ramcharger). CB-MB = Compact Front Section Only. W = Conventional Cab 4 Wheel Drive.  
**CODES:** AW = 4 Wheel Drive Only (Ramcharger). P = Forward Control Chassis. M = Motor Home.

**MEDIUM-HEAVY CODES:** XNT = Low Cab Forward. D = Conventional Cab. S = School Bus. W = 4-Wheel Drive.

AR=Use as Required

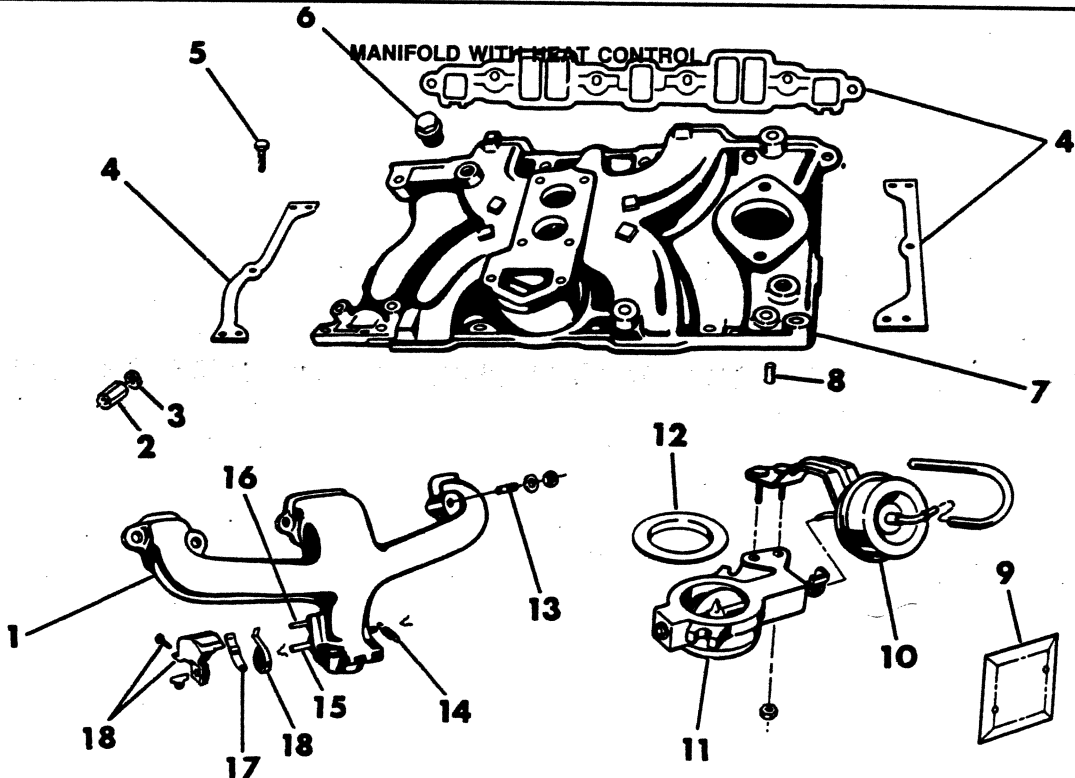
# = New Part Number

Printed in U.S.A.

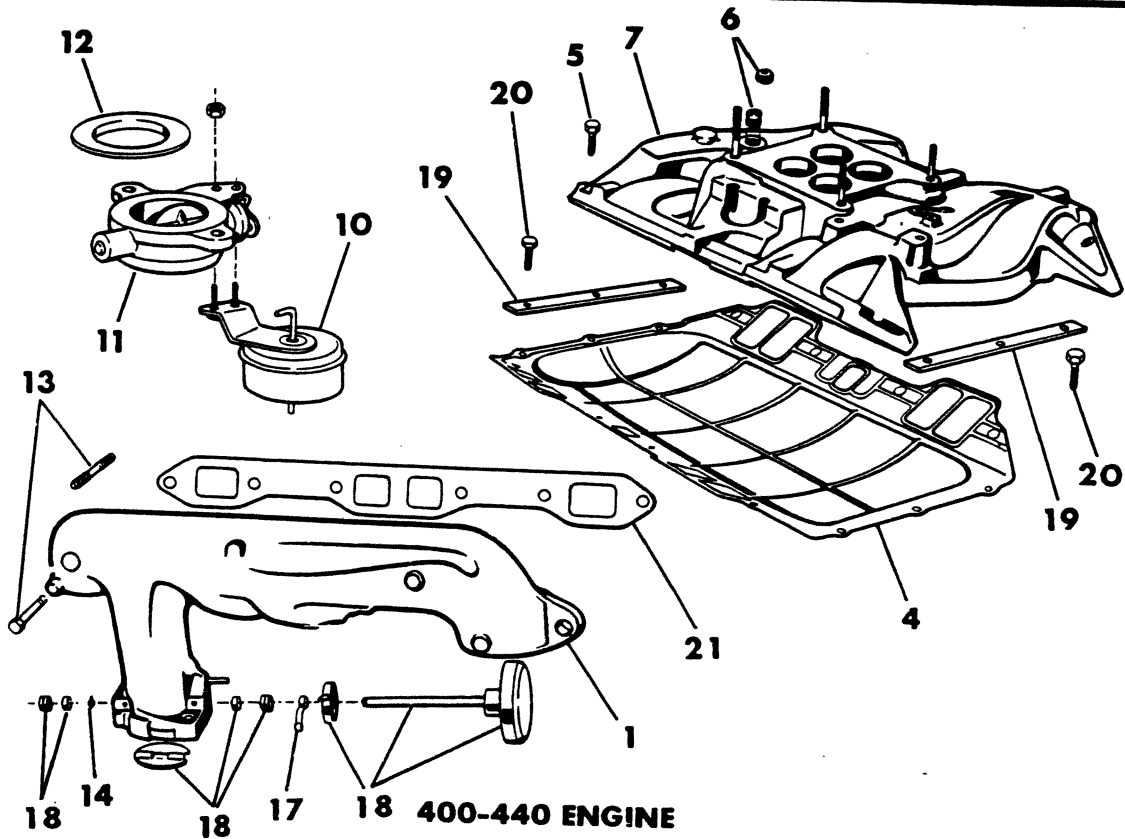
June, 1982







318-360 ENGINE



400-440 ENGINE

| DESCRIPTION   | 318 ENG. | 360 ENG. | 400 ENG. | 440 ENG. |          |
|---|----------|----------|----------|----------|----------|
| <b>MANIFOLD WITH HEAT CONTROL</b>                                     |          |          |          |          |          |
| <b>1 MANIFOLD, EXHAUST</b>  |          |          |          |          |          |
| 318 Eng. 2 Bbl. w/o Calif. A-D-W1,2 1978 - Rt.                        | 1        | 4049 317 |          |          |          |
| 318 Eng. 2 Bbl. CB-MB3-D-W3 1978 - Rt.                                | 1        | 4049 317 |          |          |          |
| 360 Eng. 2 Bbl. w/Air Pump HDC B3-MB3,4-D2,3,4-W3,4<br>1978 - Rt.     | 1        |          | 3879 721 |          |          |
| 360 Eng. 2 Bbl. w/Air Pump w/o Cat. Conv. B1 1978 - Rt.               | 1        |          | 3879 721 |          |          |
| 360 Eng. 2 Bbl. w/Air Pump w/o Cat. Conv. LDC D1-AD1<br>1978 - Rt.    | 1        |          | 3879 721 |          |          |
| 360 Eng. 2 Bbl. w/o Calif. CB3-MB3,4-A-D-W 1978 - Rt.                 | 1        |          | 4049 317 |          |          |
| 360 Eng. 4 Bbl. Hi Perf. D1 1978 - Rt.                                | 1        |          | 4049 317 |          |          |
| 318 & 360 Eng. 2 Bbl. w/Air Pump B1 1978 - Rt.                        | 1        | 3879 721 | 3879 721 |          |          |
| 318 & 360 Eng. 2 Bbl. w/Air Pump MDC B2,3-A-D-W1,2<br>1978 - Rt.      | 1        | 3879 721 | 3879 721 |          |          |
| 318 & 360 Eng. 2 Bbl. w/Air Pump LDC D1 1978 - Rt.                    | 1        | 3879 721 | 3879 721 |          |          |
| 318 & 360 Eng. 2 Bbl. w/o Calif. B1,2,3 1978 - Rt.                    | 1        | 4049 317 | 4049 317 |          |          |
| 318 Eng. 2 Bbl. w/o Calif. A-D-W1,2 1978 - Lt.                        | 1        | 4071 606 |          |          |          |
| 318 Eng. 2 Bbl. CB-MB3-D-W3 1978 - Lt.                                | 1        | 4071 606 |          |          |          |
| 360 Eng. 2 Bbl. w/Air Pump HDC<br>B3-CB3-MB3,4-D2,3,4-W3,4 1978 - Lt. | 1        |          | 3879 720 |          |          |
| 360 Eng. 2 Bbl. w/Air Pump w/o Cat. Conv. B1 1978 - Lt.               | 1        |          | 3879 720 |          |          |
| 360 Eng. 2 Bbl. w/Air Pump w/o Cat. Conv. LDC D1-AD1<br>1978 - Lt.    | 1        |          | 3879 720 |          |          |
| 360 Eng. 2 Bbl. w/o Calif. CB3-MB3,4-A-D-W 1978 - Lt.                 | 1        |          | 4071 606 |          |          |
| 360 Eng. 4 Bbl. Hi Perf. D1 1978 - Lt.                                | 1        |          | 4071 606 |          |          |
| 318 & 360 Eng. 2 Bbl. w/Air Pump B1 1978 - Lt.                        | 1        | 3879 720 | 3879 720 |          |          |
| 318 & 360 Eng. 2 Bbl. w/Air Pump MDC B2,3-A-D-W1,2<br>1978 - Rt.      | 1        | 3879 720 | 3879 720 |          |          |
| 318 & 360 Eng. 2 Bbl. w/Air Pump LDC D1 1978 - Lt.                    | 1        | 3879 720 | 3879 720 |          |          |
| 318 & 360 Eng. 2 Bbl. w/o Calif. B1,2,3 1978 - Lt.                    | 1        | 4071 606 | 4071 606 |          |          |
| 360-3 Eng. w/Air Pump CB-MB4-M3,4 1978                                | 2        |          | 3879 720 |          |          |
| 360-3 Eng. w/o Air Pump CB-MB4-M3,4 1978                              | 2        |          | 4071 606 |          |          |
| 400-1 Eng. B1 1978 - Rt.  | 1        |          |          | 4049 318 |          |
| 400-1 Eng. AD1 1978 - Rt.   | 1        |          |          | 3769 107 |          |
| 400-1 & 440-1 Eng. B2,3-CB3-MB3,4 1978 - Rt.                          | 1        |          |          | 4049 318 | 4049 318 |
| 400-1 & 440-1 Eng. D-W-AW1 1978 - Rt.                                 | 1        |          |          | 3769 107 | 3769 107 |
| 440-3 Eng. CB-MB4-M3,4,5,6 1978 - Rt.                                 | 1        |          |          |          | 4071 609 |
| 400-1 Eng. B1 1978 - Lt.  | 1        |          |          | 3830 246 |          |
| 400-1 Eng. AD1 1978 - Lt.   | 1        |          |          | 3769 109 |          |
| 400-1 & 440-1 Eng. B2,3-CB3-MB3,4 1978 - Lt.                          | 1        |          |          | 3830 246 | 3830 246 |
| 400-1 & 440-1 Eng. D-W-AW1 1978 - Lt.                                 | 1        |          |          | 3769 109 | 3769 109 |
| 440-3 Eng. CB-MB4 1978 - Lt.  | 1        |          |          |          | 3830 246 |
| 440-3 Eng. M3,4,5,6 1978 - Lt.  | 1        |          |          |          | 3769 109 |
| 318 Eng. 2 Bbl. B1,2,3-CB3-A-D-W 1979 - Rt.                           | 1        | 4100 458 |          |          |          |
| 318 Eng. 4 Bbl. w/Calif. LDC B1-D1-AD1 1979 - Rt.                     | 1        | 4041 261 |          |          |          |
| 318 Eng. 4 Bbl. w/Air Pump w/o Cat. Conv. B1 1979 - Rt.               | 1        | 3879 721 |          |          |          |
| 318 Eng. 4 Bbl. w/Air Pump w/o Cat. Conv. LDC D1-AD1<br>1979 - Rt.    | 1        | 3879 721 |          |          |          |
| 360 Eng. 2 Bbl. LDC B2,3-A-D-W1,2 1979 - Rt.                          | 1        |          | 3879 721 |          |          |
| 360 Eng. 2 Bbl. B2,3-A-D-W1,2 1979 - Rt.                              | 1        |          | 4049 317 |          |          |

LIGHT A = All Sport Utility (Ramcharger).

B = All Compact Models.

D = Conventional Cab.

DUTY AD = 2 Wheel Drive Only (Ramcharger).

CB-MB = Compact Front Section Only.

W = Conventional Cab 4 Wheel Drive.

CODES: AW = 4 Wheel Drive Only (Ramcharger).

P = Forward Control Chassis.

M = Motor Home.

MEDIUM-HEAVY CODES: XNT = Low Cab Forward. D = Conventional Cab. S = School Bus. W = 4-Wheel Drive.

AR=Use as Required

#=New Part Number

Printed in U.S.A.

June, 1982

# 1978-81 LIGHT DUTY TRUCK PARTS CATALOG

ENGINE, 8 CYLINDER

| DESCRIPTION  | 318 ENG. | 360 ENG. | 400 ENG. | 440 ENG. |
|--|----------|----------|----------|----------|
| <b>MANIFOLD WITH HEAT CONTROL</b>                                  |          |          |          |          |
| 360 Eng. 4 Bbl. HDC B3-D1,2-W3,4 1979 - Rt.                        | 1        |          | 3879 721 |          |
| 360 Eng. 4 Bbl. CB3-MB3,4-D3,4 1979 - Rt.                          | 1        |          | 3879 721 |          |
| 360 Eng. 4 Bbl. Hi Perf. D1 1979 - Rt.                             | 1        |          | 4100 458 |          |
| 318 & 360 Eng. 4 Bbl. B2,3-W1,2-AW1 1979 - Rt.                     | 1        | 3879 721 | 3879 721 |          |
| 318 & 360 Eng. 4 Bbl. MDC D1,2-AD1 1979 - Rt.                      | 1        | 3879 721 | 3879 721 |          |
| 318 & 360 Eng. 4 Bbl. HDC AD1 1979 - Rt.                           | 1        | 3879 721 | 3879 721 |          |
| 318 Eng. 2 Bbl. B1,2,3-CB3-A-D-W 1979 - Lt.                        | 1        | 4071 606 |          |          |
| 318 Eng. 4 Bbl. w/Calif. LDC B1-D1-AD1 1979 - Lt.                  | 1        | 3879 720 |          |          |
| 318 Eng. 4 Bbl. w/Air Pump w/o Cat. Conv. B1 1979 - Lt.            | 1        | 3879 720 |          |          |
| 318 Eng. 4 Bbl. w/Air Pump w/o Cat. Conv. LDC D1-AD1 1979 - Lt.    | 1        | 3879 720 |          |          |
| 360 Eng. 2 Bbl. LDC B2,3-A-D-W1,2 1979 - Lt.                       | 1        |          | 3879 720 |          |
| 360 Eng. 2 Bbl. B2,3-A-D-W1,2 1979 - Lt.                           | 1        |          | 4071 606 |          |
| 360 Eng. 4 Bbl. HDC B3-D1,2-W3,4 1979 - Lt.                        | 1        |          | 3879 720 |          |
| 360 Eng. 4 Bbl. CB-MB3,4-D3,4 1979 - Lt.                           | 1        |          | 3879 720 |          |
| 360 Eng. 4 Bbl. Hi Perf. D1 1979 - Lt.                             | 1        |          | 4071 606 |          |
| 318 & 360 Eng. 4 Bbl. B2,3-W1,2-AW1 1979 - Lt.                     | 1        | 3879 720 | 3879 720 |          |
| 318 & 360 Eng. 4 Bbl. MDC D1,2-AD1 1979 - Lt.                      | 1        | 3879 720 | 3879 720 |          |
| 318 & 360 Eng. 4 Bbl. HDC AD1 1979 - Lt.                           | 1        | 3879 720 | 3879 720 |          |
| 360-3 Eng. CB-MB4-M3,4 1979  | 2        |          | 3879 720 |          |
| 440-1 Eng. MB3,4 1979 - Rt.  | 1        |          |          | 4049 318 |
| 440-3 Eng. MB4-M4,5,6 1979 - Rt.                                   | 1        |          |          | 4071 609 |
| 440-1 Eng. MB3,4 1979 - Lt.  | 1        |          |          | 3830 246 |
| 440-3 Eng. MB4 1979 - Lt.  | 1        |          |          | 3830 246 |
| 440-3 Eng. M4,5,6 1979 - Lt.                                       | 1        |          |          | 3769 109 |
| 318 Eng. 2 Bbl. LDC B2,3-D-W1,2-AW1 1980 - Rt.                     | 1        | 4227 638 |          |          |
| 318 Eng. 2 Bbl. w/o Air Pump LDC B1,2-D1-AD1 1980 - Rt.            | 1        | 4227 638 |          |          |
| 318 Eng. 2 Bbl. Canada & Export HDC B1,2,3-CB3-A-D-W 1980 - Rt.    | 1        | 4227 638 |          |          |
| 318 Eng. 4 Bbl. LDC B1-D1-AD1 1980 - Rt.                           | 1        | 3879 721 |          |          |
| 318 Eng. 4 Bbl. MDC B2,3-D1,2-W1 1980 - Rt.                        | 1        | 4041 261 |          |          |
| 318 Eng. 4 Bbl. HDC B3-CB3-D2,3-W2 1980 - Rt.                      | 1        | 3879 721 |          |          |
| 360 Eng. 2 Bbl. HDC B2,3-CB3-D-W 1980 - Rt.                        | 1        |          | 4227 638 |          |
| 360 Eng. 4 Bbl. LDC W1,2-AW1 1980 - Rt.                            | 1        |          | 4227 638 |          |
| 360 Eng. 4 Bbl. MDC & HDC B2,3-D-W1,2-AW1 1980 - Rt.               | 1        |          | 3879 721 |          |
| 360 Eng. 4 Bbl. HDC CB3-MB3,4-D-W3,4 1980 - Rt.                    | 1        |          | 3879 721 |          |
| 360 Eng. 4 Bbl. w/Leaded Fuel HDC AD1 1980 - Rt.                   | 1        |          | 3879 721 |          |
| 360 Eng. 4 Bbl. w/Lock Up Torq. Conv. LDC B2,3-D1,2-AD1 1980 - Rt. | 1        |          | 4227 638 |          |
| 360 Eng. 4 Bbl. w/o Lock Up Torq. Conv. LDC B2,3-D1,2 1980 - Rt.   | 1        |          | 4227 638 |          |
| 360 Eng. 4 Bbl. Hi Perf. D1 1980 - Rt.                             | 1        |          | 4227 638 |          |
| 318 Eng. 2 Bbl. LDC B2,3-D-W1,2-AW1 1980 - Lt.                     | 1        | 4227 650 |          |          |
| 318 Eng. 2 Bbl. w/o Air Pump LDC B1,2-D1-AD1 1980 - Lt.            | 1        | 4227 650 |          |          |
| 318 Eng. 2 Bbl. Canada & Export HDC B1,2,3-CB3-A-D-W 1980 - Lt.    | 1        | 4227 650 |          |          |
| 318 Eng. 4 Bbl. LDC B1-D1-AD1 1980 - Lt.                           | 1        | 3879 720 |          |          |
| 318 Eng. 4 Bbl. MDC B2,3-D1,2-W1 1980 - Lt.                        | 1        | 3879 720 |          |          |
| 318 Eng. 4 Bbl. HDC B3-CB3-D2,3-W2 1980 - Lt.                      | 1        | 3879 720 |          |          |

**LIGHT DUTY CODES:** A = All Sport Utility (Ramcharger). B = All Compact Models. D = Conventional Cab.  
 AD = 2 Wheel Drive Only (Ramcharger). CB-MB = Compact Front Section Only. W = Conventional Cab 4 Wheel Drive.  
 AW = 4 Wheel Drive Only (Ramcharger). P = Forward Control Chassis. M = Motor Home.

**MEDIUM-HEAVY CODES:** XNT = Low Cab Forward. D = Conventional Cab. S = School Bus. W = 4-Wheel Drive.

AR=Use as Required

#=New Part Number

Printed in U.S.A.

June, 1982

|                                   | DESCRIPTION   | 318 ENG. | 360 ENG. | 400 ENG. | 440 ENG.          |
|-----------------------------------|---|----------|----------|----------|-------------------|
| <b>MANIFOLD WITH HEAT CONTROL</b> |   |          |          |          |                   |
|                                   | 360 Eng. 2 Bbl. HDC B2,3-CB3-D-W 1980 - Lt.                           | 1        |          | 4227 650 |                   |
|                                   | 360 Eng. 4 Bbl. LDC W1,2-AW1 1980 - Lt.                               | 1        |          | 4227 650 |                   |
|                                   | 360 Eng. 4 Bbl. MDC & HDC B2,3-D-W1,2-AW1 1980 - Lt.                  | 1        |          | 3879 720 |                   |
|                                   | 360 Eng. 4 Bbl. HDC CB3-MB3,4-D-W3,4 1980 - Lt.                       | 1        |          | 3879 720 |                   |
|                                   | 360 Eng. 4 Bbl. w/Leaded Fuel HDC AD1 1980 - Lt.                      | 1        |          | 3879 720 |                   |
|                                   | 360 Eng. 4 Bbl. w/Lock Up Torq. Conv. LDC B2,3-D1,2-AD1<br>1980 - Lt. | 1        |          | 4227 650 |                   |
|                                   | 360 Eng. 4 Bbl. w/o Lock Up Torq. Conv. LDC B2,3-D1,2<br>1980 - Lt.   | 1        |          | 4227 650 |                   |
|                                   | 360 Eng. 4 Bbl. Hi Perf. D1 1980 - Lt.                                | 1        |          | 4227 650 |                   |
|                                   | 360-3 Eng. HDC CB-MB-M3,4 1980  | 2        |          | 3879 720 |                   |
|                                   | 318 Eng. 2 Bbl. LDC B1,2,3-A-D-W1,2 1981 - Rt.                        | 1        | 4227 638 |          |                   |
|                                   | 318 Eng. 2 Bbl. HDC B2,3-D-W-AW1 1981 - Rt.                           | 1        | 4227 638 |          |                   |
|                                   | 318 Eng. 4 Bbl. w/Calif. LDC B1,2,3-D-W1,2-AW1 1981 - Rt.             | 1        | 4041 261 |          |                   |
|                                   | 318 Eng. 4 Bbl. w/o Calif. LDC B1,2,3-D-W1,2-AW1 1981 -<br>Rt.        | 1        | 4227 638 |          |                   |
|                                   | 318 Eng. 4 Bbl. Canada LDC B1-D1 1981 - Rt.                           | 1        | 3879 721 |          |                   |
|                                   | 318 Eng. 4 Bbl. HDC B3-CB3-MB2,3-D2,3-W2 1981 - Rt.                   | 1        | 3879 721 |          |                   |
|                                   | 360 Eng. 2 Bbl. HDC B2,3-D-W-AW1 1981 - Rt.                           | 1        |          | 4227 638 |                   |
|                                   | 360 Eng. 4 Bbl. w/Calif. LDC B2,3-D-W1,2-AW1 1981 - Rt.               | 1        |          | 4041 261 |                   |
|                                   | 360 Eng. 4 Bbl. w/o Calif. LDC B2,3-D-W1,2-AW1 1981 - Rt.             | 1        |          | 4227 638 |                   |
|                                   | 360 Eng. 4 Bbl. HDC B2,3-CB3-MB3,4-D-W-AW1 1981 - Rt.                 | 1        |          | 3879 721 |                   |
|                                   | 318 Eng. 2 Bbl. LDC B1,2,3-A-D-W1,2 1981 - Lt.                        | 1        | 4227 650 |          |                   |
|                                   | 318 Eng. 2 Bbl. HDC B2,3-D-W-AW1 1981 - Lt.                           | 1        | 4227 650 |          |                   |
|                                   | 318 Eng. 4 Bbl. w/Calif. LDC B1,2,3-D-W1,2-AW1 1981 - Lt.             | 1        | 3879 720 |          |                   |
|                                   | 318 Eng. 4 Bbl. w/o Calif. LDC B1,2,3-D-W1,2-AW1 1981 -<br>Lt.        | 1        | 4227 650 |          |                   |
|                                   | 318 Eng. 4 Bbl. Canada LDC B2,3-D-W1,2-AW1 1981 - Lt.                 | 1        | 3879 720 |          |                   |
|                                   | 318 Eng. 4 Bbl. HDC B3-CB3-MB2,3-D2,3-W2 1981 - Lt.                   | 1        | 3879 720 |          |                   |
|                                   | 360 Eng. 2 Bbl. HDC B2,3-D-W-AW1 1981 - Lt.                           | 1        |          | 4227 650 |                   |
|                                   | 360 Eng. 4 Bbl. w/Calif. LDC B2,3-D-W1,2-AW1 1981 - Lt.               | 1        |          | 3879 720 |                   |
|                                   | 360 Eng. 4 Bbl. w/o Calif. LDC B2,3-D-W1,2-AW1 1981 - Lt.             | 1        |          | 4227 650 |                   |
|                                   | 360 Eng. 4 Bbl. HDC B2,3-CB3-MB3,4-D-W-AW1 1981 - Lt.                 | 1        |          | 3879 720 |                   |
|                                   | 360-3 Eng. HDC CB-MB-M3,4,5 1981                                      | 2        |          | 3879 720 |                   |
|                                   | 361-2 Eng. HDC M3,4 1981  | 2        |          | 3879 720 |                   |
| 2                                 | NUT, Exhaust Manifold End   | 1        | 6031 179 | 6031 179 |                   |
| 3                                 | WASHER, Exhaust Manifold End  | 4        | 2121 223 | 2121 223 |                   |
| 4                                 | GASKET, Intake Manifold   |          |          |          |                   |
|                                   | 2 Bbl.  | 1        | 3837 605 | 3837 605 |                   |
|                                   | 4 Bbl.  | 2        | 3514 187 | 3514 187 |                   |
|                                   |   | 1        |          |          | 3671 874 3671 933 |
| 5                                 | BOLT, Intake Manifold   |          |          |          |                   |
|                                   | 3/8 x 1 5/8   | 12       | 454 467  | 454 467  |                   |
|                                   | 3/8 x 1 1/2   | 8        |          |          | 6029 757 6029 757 |
| 6                                 | JET, Intake Manifold Floor  |          |          |          |                   |
|                                   | LDC & MDC   | 1        | 4041 067 | 4041 067 |                   |
|                                   | 318 & 360 Eng. 4 Bbl. & 360-3 Eng. HDC                                | 1        | 3830 987 | 3830 987 |                   |
|                                   |   | 1        |          |          | 3830 987 4041 023 |
| 7                                 | MANIFOLD, Intake  |          |          |          |                   |

LIGHT A = All Sport Utility (Ramcharger).

B = All Compact Models.

D = Conventional Cab.

DUTY AD = 2 Wheel Drive Only (Ramcharger).

CB-MB = Compact Front Section Only.

W = Conventional Cab 4 Wheel Drive.

CODES: AW = 4 Wheel Drive Only (Ramcharger).

P = Forward Control Chassis.

M = Motor Home.

MEDIUM-HEAVY CODES: XNT = Low Cab Forward. D = Conventional Cab. S = School Bus. W = 4-Wheel Drive.

AR=Use as Required

# = New Part Number

Printed in U.S.A.

June, 1982

# 1978-81 LIGHT DUTY TRUCK PARTS CATALOG

ENGINE, 8 CYLINDER

| DESCRIPTION                       |  | 318 ENG. | 360 ENG. | 400 ENG. | 440 ENG. |
|-----------------------------------|--|----------|----------|----------|----------|
| <b>MANIFOLD WITH HEAT CONTROL</b> |  |          |          |          |          |
|                                   | 2 Bbl. 1978  | 1        | 3870 021 | 3870 022 |          |
|                                   | 4 Bbl. 1978  | 1        |          | 3870 023 |          |
|                                   | 360-3 Eng. CB-MB4-M3,4 1978                                      | 1        |          | 3870 498 |          |
|                                   | 400 & 440 Eng. 1978  | 1        |          | 3870 024 | 3830 732 |
|                                   | 2 Bbl. 1979  | 1        | 4201 135 | 4100 332 |          |
|                                   | 4 Bbl. 1979  | 1        | 4100 338 | 4100 338 |          |
|                                   | 440 Eng. 1979  | 1        |          |          | 3830 732 |
|                                   | 2 Bbl. 1980  | 1        | 4201 135 | 4100 332 |          |
|                                   | 4 Bbl. 1980  | 1        | 4179 457 | 4179 457 |          |
|                                   | 2 Bbl. 1981  | 1        | 4179 456 | 4100 332 |          |
|                                   | 4 Bbl. 1981  | 1        | 4179 457 | 4179 457 |          |
|                                   | <b>PLUG, Intake Manifold</b>                                     |          |          |          |          |
|                                   | Heater Hole  | 1        | 1859 127 | 1859 127 |          |
|                                   | Oil Return Hole  | 1        | 1859 127 | 1859 127 |          |
| 8                                 | DOWEL, Intake Manifold Gasket                                    | 2        | 4006 583 | 4006 583 |          |
| 9                                 | SHIELD, Intake Manifold Heat                                     | 1        | 3698 458 | 3698 458 |          |
| 10                                | ACTUATOR, Power Heat Valve 318 Eng. 4 Bbl. w/Calif.<br>B1-D1-AD1 | 1        | 4179 478 |          |          |
| 11                                | VALVE, Power Heat 318 Eng. 4 Bbl. w/Calif. B1-D1-AD1             | 1        | 4173 933 |          |          |
|                                   | TUBE, Power Heat Valve   | 1        | 4041 530 |          |          |
| 12                                | GASKET, Power Heat Valve   | 1        | 4041 278 |          |          |
| 13                                | STUD, Exhaust Manifold   |          |          |          |          |
|                                   | Right & Left   | 1        | 6030 622 | 6030 622 |          |
|                                   | End  | 4        | 117 713  | 117 713  |          |
|                                   |  | 12       |          |          | 6030 409 |
|                                   | NUT, Exhaust Manifold Stud                                       | 4        |          | 4041 150 | 4041 150 |
|                                   | NUT, Exhaust Manifold Stud                                       | 2        |          | 4041 123 | 4041 123 |
|                                   | NUT, Exhaust Manifold Stud                                       | 6        |          | 6030 310 | 6030 310 |
|                                   | WASHER, Exhaust Manifold Stud Nut                                | 6        |          | 6030 064 | 6030 064 |
| 14                                | SPRING, Exhaust Manifold Heat Control Valve Shaft                | 1        | 2951 626 | 2951 626 | 2951 870 |
| 15                                | PIN, Exhaust Manifold Heat Control Valve                         | 1        | 2951 627 | 2951 627 | 1639 597 |
| 16                                | PIN, Exhaust Manifold Heat Control Valve Stop                    | 1        | 9409 667 | 9409 667 | 141 162  |
| 17                                | STOP, Exhaust Manifold Heat Control Valve                        | 1        | 2946 083 | 2946 083 | 2946 083 |
| 18                                | HEAT CONTROL PKG.  | 1        | 3683 947 | 3683 947 | 3837 632 |
| 19                                | REINFORCEMENT, Intake Manifold Gasket End                        | 2        |          | 1859 332 | 1851 665 |
| 20                                | SCREW, Reinforcement End   | 2        |          | 181 065  | 181 065  |
|                                   |  | 4        |          | 181 063  | 181 063  |
| 21                                | GASKET, Exhaust Manifold   | 1        |          | 4095 786 | 4095 786 |

**LIGHT DUTY CODES:**  
 A = All Sport Utility (Ramcharger).      B = All Compact Models.      D = Conventional Cab.  
 AD = 2 Wheel Drive Only (Ramcharger).      CB-MB = Compact Front Section Only.      W = Conventional Cab 4 Wheel Drive.  
 AW = 4 Wheel Drive Only (Ramcharger).      P = Forward Control Chassis.      M = Motor Home.

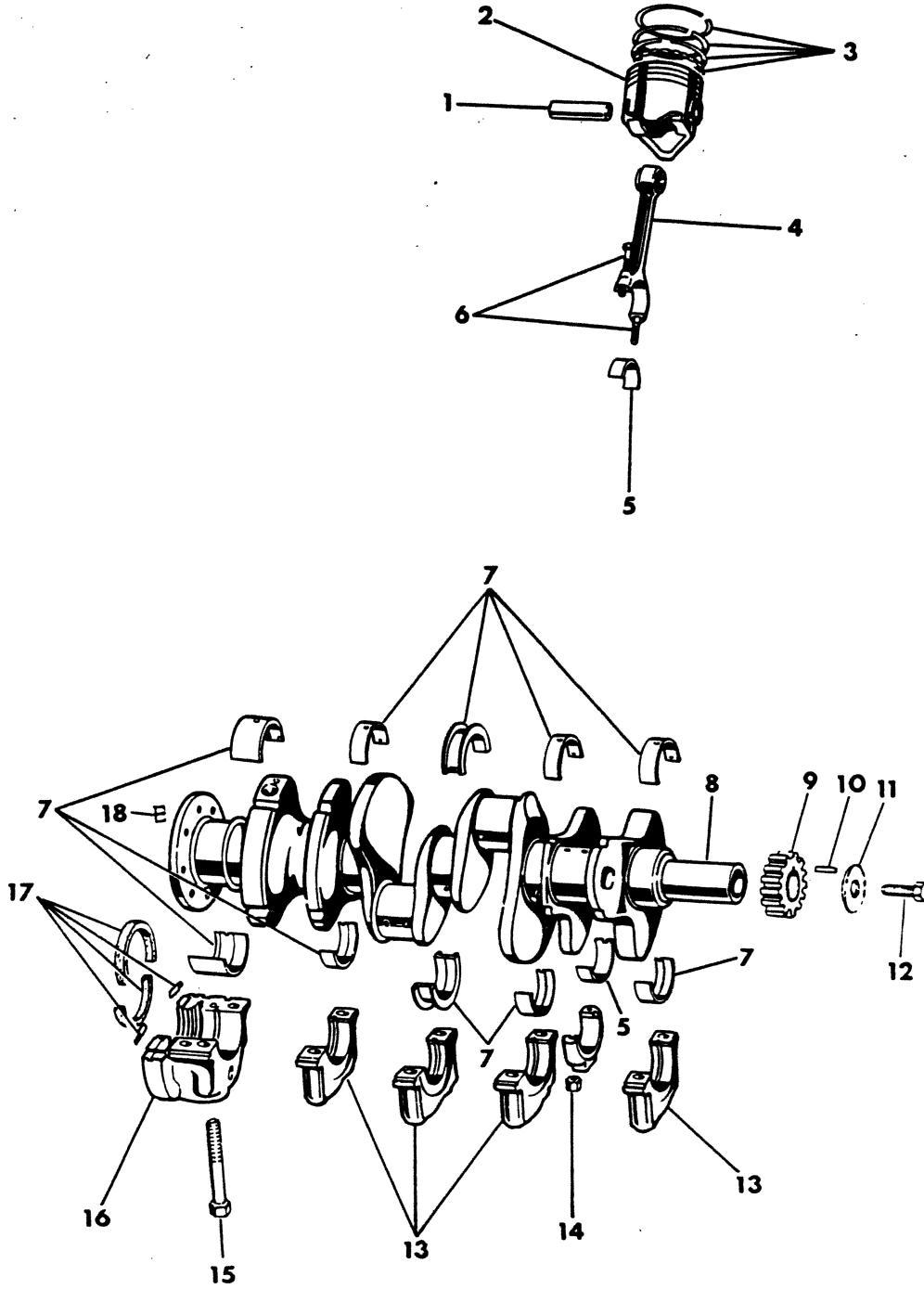
**MEDIUM-HEAVY CODES:**    XNT = Low Cab Forward.    D = Conventional Cab.    S = School Bus.    W = 4-Wheel Drive.

AR = Use as Required      # = New Part Number



CRANKSHAFT, PISTONS AND RINGS

8309 400A





| DESCRIPTION                          |                                      | 318 ENG. | 360 ENG. | 400 ENG. | 440 ENG.          |
|--------------------------------------|--------------------------------------|----------|----------|----------|-------------------|
| <b>CRANKSHAFT, PISTONS AND RINGS</b> |                                      |          |          |          |                   |
| 1                                    | <b>PIN, Piston</b>                   |          |          |          |                   |
|                                      | Std.                                 | 8        | 2658 878 | 2658 878 |                   |
|                                      | .003 o/s                             | 8        | 2658 879 | 2658 879 |                   |
|                                      | .008 o/s                             | 8        | 2658 880 | 2658 880 |                   |
| 2                                    | <b>PISTON w/PIN</b>                  |          |          |          |                   |
|                                      | Std.                                 | 8        | 3685 751 | 4026 451 | 3621 356 3579 047 |
|                                      | .020 o/s                             | 8        | 3685 753 | 4026 453 | 3621 358 3579 049 |
|                                      | <b>Low Compression</b>               |          |          |          |                   |
|                                      | Std.                                 | 8        | 2808 650 | 4026 472 |                   |
|                                      | .005 o/s                             | 8        | 2808 651 |          |                   |
|                                      | .020 o/s                             | 8        | 2808 652 |          |                   |
| 3                                    | <b>RING SET, Piston (1 Piston)</b>   |          |          |          |                   |
|                                      | Std. to .009 o/s                     | 8        | 3780 007 | 3780 016 | 3780 028 3780 117 |
|                                      | .020 to .029 o/s                     | 8        | 3780 008 | 3780 017 | 3780 029 3780 118 |
|                                      | .040 to .049 o/s                     | 8        | 3780 009 | 3780 018 | 3780 030 3780 119 |
|                                      | <b>Set (All Pistons)</b>             |          |          |          |                   |
|                                      | Std. to .009 o/s                     | 1        | 2808 553 | 3579 044 | 3685 683 3780 123 |
|                                      | .020 to .029 o/s                     | 1        | 2808 554 | 3579 045 | 3685 684 3780 124 |
|                                      | .040 to .049 o/s                     | 1        | 2808 555 | 3579 046 | 3685 685 3780 125 |
|                                      | <b>360-3 Eng. (1 Piston)</b>         |          |          |          |                   |
|                                      | Std. to .009 o/s                     | 8        |          | 4049 158 |                   |
|                                      | .020 to .029 o/s                     | 8        |          | 4049 159 |                   |
|                                      | .040 to .049 o/s                     | 8        |          | 4049 160 |                   |
| 4                                    | <b>ROD, Connecting</b>               | 8        | 3751 015 | 3751 015 | 1737 690 4027 096 |
| 5                                    | <b>BEARING PKG., Connecting Rod</b>  |          |          |          |                   |
|                                      | Std. 1978                            | 8        | 1879 617 |          |                   |
|                                      | .001 u/s 1978                        | 8        | 1879 618 |          |                   |
|                                      | Std.                                 | 8        | 4186 118 | 2421 305 | 1881 794 1881 794 |
|                                      | .001 u/s                             | 8        | 4186 119 | 2421 306 | 1881 795 1881 795 |
|                                      | .002 u/s                             | 8        | 4186 120 | 2421 307 | 1881 796 1881 796 |
|                                      | .003 u/s                             | 8        | 4186 121 | 2421 308 | 2275 413 2275 413 |
|                                      | .010 u/s                             | 8        | 4186 122 | 2121 309 | 1881 797 1881 797 |
|                                      | .012 u/s                             | 8        | 4186 123 | 2421 310 | 2275 414 2275 414 |
| 6                                    | <b>BOLT, Connecting Rod Brg. Cap</b> | 16       | 3830 614 | 3830 614 | 3830 615 3830 615 |
| 7                                    | <b>BEARING PKG., Crankshaft</b>      |          |          |          |                   |
|                                      | <b>No. 1,2,4</b>                     |          |          |          |                   |
|                                      | Std.                                 | 3        | 2084 005 | 4026 487 |                   |
|                                      | .001 u/s                             | 3        | 2084 006 | 4026 488 |                   |
|                                      | .002 u/s                             | 3        | 2084 007 | 4026 489 |                   |
|                                      | .003 u/s                             | 3        | 2275 387 | 4026 490 |                   |
|                                      | .010 u/s                             | 3        | 2084 008 | 4026 491 |                   |
|                                      | .012 u/s                             | 3        | 2275 338 | 4026 492 |                   |
|                                      | <b>No. 3</b>                         |          |          |          |                   |
|                                      | Std.                                 | 1        | 3780 075 | 3780 094 |                   |
|                                      | .001 u/s                             | 1        | 3780 076 | 3780 095 |                   |
|                                      | .002 u/s                             | 1        | 3780 077 | 3780 096 |                   |
|                                      | .003 u/s                             | 1        | 3780 078 | 3780 097 |                   |
|                                      | .010 u/s                             | 1        | 3780 079 | 3780 098 |                   |
|                                      | .012 u/s                             | 1        | 3780 080 | 3780 099 |                   |

**LIGHT DUTY CODES:** A = All Sport Utility (Ramcharger). B = All Compact Models. D = Conventional Cab.  
AD = 2 Wheel Drive Only (Ramcharger). CB-MB = Compact Front Section Only. W = Conventional Cab 4 Wheel Drive.  
CODES: AW = 4 Wheel Drive Only (Ramcharger). P = Forward Control Chassis. M = Motor Home.

**MEDIUM-HEAVY CODES:** XNT = Low Cab Forward. D = Conventional Cab. S = School Bus. W = 4-Wheel Drive.

AR=Use as Required

# = New Part Number

Printed in U.S.A.

June, 1982

# 1978-81 LIGHT DUTY TRUCK PARTS CATALOG

ENGINE, 8 CYLINDER

| DESCRIPTION                          |                                     | 318 ENG. | 360 ENG. | 400 ENG. | 440 ENG. |
|--------------------------------------|-------------------------------------|----------|----------|----------|----------|
| <b>CRANKSHAFT, PISTONS AND RINGS</b> |                                     |          |          |          |          |
| <b>NO. 5</b>                         |                                     |          |          |          |          |
|                                      | Std.                                | 1        | 3514 151 | 3780 100 |          |
|                                      | .001 u/s                            | 1        | 3514 152 | 3780 101 |          |
|                                      | .002 u/s                            | 1        | 3514 153 | 3780 102 |          |
|                                      | .003 u/s                            | 1        | 3514 154 | 3780 103 |          |
|                                      | .010 u/s                            | 1        | 3514 155 | 3780 104 |          |
|                                      | .012 u/s                            | 1        | 3514 156 | 3780 105 |          |
| <b>No. 1,2,4,5</b>                   |                                     |          |          |          |          |
|                                      | Std.                                | 4        |          | 3837 633 | 3420 009 |
|                                      | .001 u/s                            | 4        |          | 3837 634 | 3420 010 |
|                                      | .002 u/s                            | 4        |          | 3837 635 | 3420 011 |
|                                      | .003 u/s                            | 4        |          | 3837 636 | 3420 012 |
|                                      | .010 u/s                            | 4        |          | 3837 637 | 3420 013 |
|                                      | .012 u/s                            | 4        |          | 3830 638 | 3420 014 |
| <b>No. 3</b>                         |                                     |          |          |          |          |
|                                      | Std.                                | 1        |          | 3780 081 | 3780 087 |
|                                      | .001 u/s                            | 1        |          | 3780 082 | 3780 088 |
|                                      | .002 u/s                            | 1        |          | 3780 083 | 3780 089 |
|                                      | .003 u/s                            | 1        |          | 3780 084 | 3780 090 |
|                                      | .010 u/s                            | 1        |          | 3780 085 | 3780 091 |
|                                      | .012 u/s                            | 1        |          | 3780 086 | 3780 092 |
| 8                                    | CRANKSHAFT                          | 1        | 3751 831 | 3751 602 |          |
|                                      | 360-3 Eng.                          | 1        |          | 4095 019 |          |
|                                      | w/Man. Trans. D-W-AW1               | 1        |          |          | 3751 881 |
|                                      | w/Auto. Trans.                      | 1        |          |          | 3781 886 |
| 9                                    | SPROCKET, Crankshaft                | 1        | 2483 385 | 2463 385 | 2532 491 |
|                                      | 360-3 Eng.                          | 1        |          | 1637 657 |          |
|                                      | 440-3 Eng.                          | 1        |          |          | 2205 568 |
| 10                                   | KEY, Crankshaft Sprocket            | 1        | 6029 411 | 6029 411 | 6029 411 |
| 11                                   | WASHER, Crankshaft Screw            | 1        | 1855 561 | 1855 561 |          |
| 12                                   | SCREW, Crankshaft                   | 1        | 1821 414 | 1821 414 | 1731 525 |
| 13                                   | CAP, Crankshaft Bearing             |          |          |          |          |
|                                      | <b>No. 1,2,4</b>                    | 3        | 2863 854 | 3614 232 | 2206 315 |
|                                      | <b>No. 3</b>                        | 1        | 2463 582 | 3614 233 | 3769 343 |
|                                      | <b>No. 5</b>                        | 1        |          | 3614 234 | 2206 315 |
|                                      | 1978                                | 1        | 2863 902 |          |          |
|                                      | 1979-80-81                          | 1        | 4173 189 |          |          |
| 14                                   | NUT, Connecting Rod Brg. Cap Bolt   | 16       | 1737 695 | 1737 695 | 1737 695 |
| 15                                   | SCREW, Crankshaft Bearing Cap       | 10       | 1618 695 | 6027 264 | 1406 867 |
| 16                                   | RETAINER, Crankshaft Brg. Seal      | 1        |          |          | 1945 473 |
|                                      | SCREW                               | 2        |          |          | 9418 005 |
| 17                                   | OIL SEAL PKG., Crankshaft Rear Brg. | 2        | 3549 392 | 3549 395 | 3549 394 |
| 18                                   | BUSHING, Crankshaft Trans. Pilot    | 1        | 53 298   | 53 298   | 53 298   |

**LIGHT** A = All Sport Utility (Ramcharger). B = All Compact Models. D = Conventional Cab.  
**DUTY** AD = 2 Wheel Drive Only (Ramcharger). CB-MB = Compact Front Section Only. W = Conventional Cab 4 Wheel Drive.  
**CODES:** AW = 4 Wheel Drive Only (Ramcharger). P = Forward Control Chassis. M = Motor Home.

**MEDIUM-HEAVY CODES:** XNT = Low Cab Forward. D = Conventional Cab. S = School Bus. W = 4-Wheel Drive.

AR=Use as Required

# = New Part Number

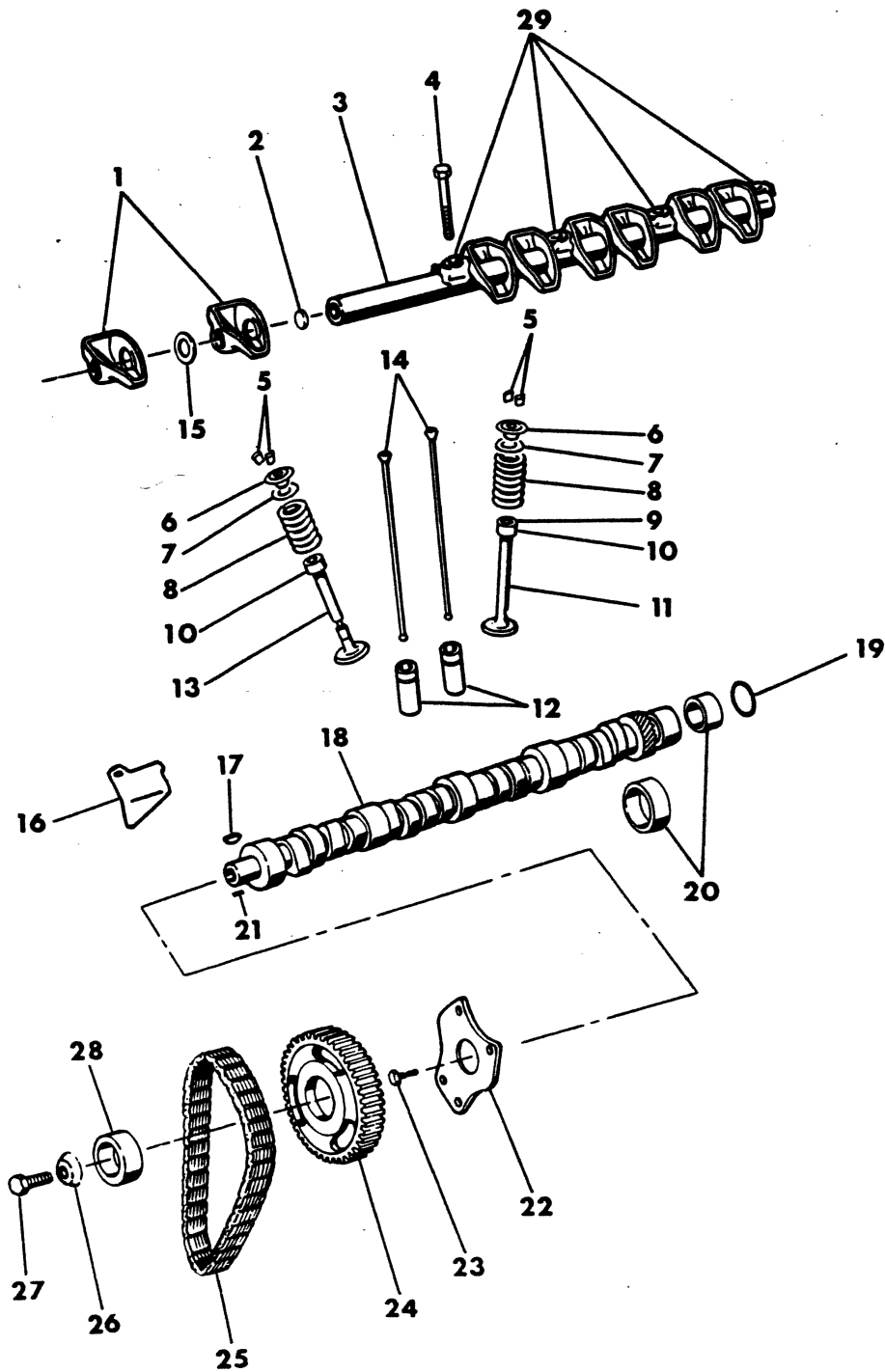
Printed in U.S.A.

June, 1982



8309 500B

## CAMSHAFT, VALVES, ROCKER SHAFT, TIMING CHAIN



| DESCRIPTION   |  | 318 ENG. | 360 ENG. | 400 ENG. | 440 ENG. |
|---|--|----------|----------|----------|----------|
| <b>CAMSHAFT, VALVES, ROCKER SHAFT, TIMING CHAIN</b> |  |          |          |          |          |
| 1   | <b>ROCKER, Valve</b>                                       |          |          |          |          |
|   | Right  | 8        | 3418 425 | 3418 425 | 3004 718 |
|   | Left   | 8        | 3418 424 | 3418 424 | 3004 719 |
|   | 360 Eng. Hi Perf. Right                                    | 8        |          | 4100 774 |          |
|   | Left   | 8        |          | 4100 775 |          |
|   | w/Cat. Conv. LDC & MDC Right                               | 8        | 4095 708 | 4095 708 |          |
|   | Left   | 8        | 4095 709 | 4095 709 |          |
| 2   | <b>PLUG, Valve Rocker Shaft</b>                            | 4        | 1324 268 | 1324 268 | 1324 268 |
| 3   | <b>SHAFT, Valve Rocker</b>                                 | 2        | 2532 149 | 2532 149 | 2465 850 |
| 4   | <b>SCREW, Valve Rocker Shaft Retainer</b>                  | 10       | 181 096  | 181 096  |          |
|   | Ends & Center  | 8        |          |          | 186 632  |
|   | Intermediate   | 4        |          |          | 181 128  |
| 5   | <b>LOCK, Intake &amp; Exhaust Valve Spring Retainer</b>    | 16       | 381 875  | 381 875  |          |
|   | w/Cat. Conv. LDC & MDC                                     | 16       | 1614 666 | 1614 666 |          |
|   | 360 Eng. Hi Perf.  | 16       |          | 1614 666 |          |
|   | 400-1 & 440-1 Eng. - Intake                                | 16       |          |          | 381 875  |
|   | Exhaust  | 16       |          |          | 1614 666 |
|   | 440-3 Eng. - Intake & Exhaust                              | 16       |          |          | 381 875  |
| 6   | <b>RETAINER, Intake &amp; Exhaust Valve Spring ROTATOR</b> | AR       | 2402 045 | 2402 045 | 2402 045 |
|   |  | 8        | 3751 659 | 3751 659 |          |
| 7   | <b>SPACER, Valve Spring</b>                                | 16       | 1859 144 | 1859 144 | 1859 144 |
| 8   | <b>SPRING, Intake &amp; Exhaust Valve</b>                  | AR       | 1739 534 | 1739 534 | 4007 000 |
|   | Exhaust Valve w/Rotators                                   | 8        | 3751 091 | 3751 091 |          |
|   | 360 Eng. Hi Perf.  | 16       |          | 2863 439 |          |
|   | 440-1 Eng.   | 16       |          |          | 4007 000 |
|   | 440-3 Eng.   | 8        |          |          | 4007 000 |
|   | 440-3 Eng.   | 8        |          |          | 3751 694 |
|   | SPRING, Valve & Damper (Exhaust) 1979-80-81                | 8        | 4100 687 | 4100 687 |          |
| 9   | <b>SEAL, Valve Guide - Intake &amp; Exhaust</b>            | 8        | 4095 543 | 4095 543 | 4095 543 |
| 10  | <b>SHIELD, Exhaust Valve Stem Oil</b>                      | 8        | 4071 006 | 4071 006 | 4071 006 |
| 11  | <b>VALVE, Intake</b>                                       |          |          |          |          |
|   | Std.   | 8        | 2465 335 | 3683 801 | 3549 979 |
|   | .005 o/s   | 8        | 2465 336 | 3683 802 | 3459 980 |
|   | .015 o/s   | 8        | 2465 337 | 3683 803 | 3549 981 |
|   | .030 o/s   | 8        | 2465 338 | 3683 804 | 3549 982 |
|   | 360-3 Eng.   |          |          |          |          |
|   | Std.   | 8        |          | 3549 963 |          |
|   | .005 o/s   | 8        |          | 3459 964 |          |
|   | .015 o/s   | 8        |          | 3549 965 |          |
|   | .030 o/s   | 8        |          | 3549 966 |          |
|   | 440-3 Eng.   |          |          |          |          |
|   | Std.   | 8        |          |          | 3751 617 |
|   | .005 o/s   | 8        |          |          | 3751 618 |
|   | .015 o/s   | 8        |          |          | 3751 619 |
|   | .030 o/s   | 8        |          |          | 3751 620 |
| 12  | <b>TAPPET, Valve</b>                                       |          |          |          |          |
|   | Std.   | 16       | 4049 338 | 4049 338 | 3004 647 |
|   | .001 o/s   | 16       | 4049 339 | 4049 339 | 3004 648 |
|   | .008 o/s   | 16       | 4049 340 | 4049 340 | 3004 649 |

LIGHT A = All Sport Utility (Ramcharger).

B = All Compact Models.

D = Conventional Cab.

DUTY AD = 2 Wheel Drive Only (Ramcharger).

CB-MB = Compact Front Section Only.

W = Conventional Cab 4 Wheel Drive.

CODES: AW = 4 Wheel Drive Only (Ramcharger).

P = Forward Control Chassis.

M = Motor Home.

MEDIUM-HEAVY CODES: XNT = Low Cab Forward. D = Conventional Cab. S = School Bus. W = 4-Wheel Drive.

AR=Use as Required

# = New Part Number

Printed in U.S.A.

June, 1982

# 1978-81 LIGHT DUTY TRUCK PARTS CATALOG

ENGINE, 8 CYLINDER

| DESCRIPTION   |  | 318 ENG. | 360 ENG. | 400 ENG. | 440 ENG.          |
|---|--|----------|----------|----------|-------------------|
| <b>CAMSHAFT, VALVES, ROCKER SHAFT, TIMING CHAIN</b> |  |          |          |          |                   |
|   | .030 o/s   | 16       | 4049 341 | 4049 341 | 3004 650 3004 650 |
| 13  | VALVE, Exhaust                                   |          |          |          |                   |
|   | w/o Rotator w/Cat. Conv. LDC & MDC 1978          |          |          |          |                   |
|   | Std.   | 8        | 3830 705 | 3751 673 |                   |
|   | .005 o/s   | 8        | 3830 706 | 3751 674 |                   |
|   | .015 o/s   | 8        | 3830 707 | 3751 675 |                   |
|   | .030 o/s   | 8        | 3830 708 | 3751 676 |                   |
|   | w/Rotator w/o Cat. Conv. LDC & MDC 1978          |          |          |          |                   |
|   | Std.   | 8        | 3769 226 | 3769 317 |                   |
|   | .005 o/s   | 8        | 3769 227 | 3769 318 |                   |
|   | .015 o/s   | 8        | 3769 228 | 3769 319 |                   |
|   | .030 o/s   | 8        | 3769 229 | 3769 320 |                   |
|   | 1979-80-81                                       |          |          |          |                   |
|   | Std.   | 8        | 4100 367 | 4100 382 |                   |
|   | .005 o/s   | 8        | 4100 368 | 4100 383 |                   |
|   | .015 o/s   | 8        | 4100 369 | 4100 384 |                   |
|   | .030 o/s   | 8        | 4100 370 | 4100 385 |                   |
|   | 318 Eng. 4 Bbl. B3-CB3-MB3,4-D2,3-W2 HDC 1980-81 |          |          |          |                   |
|   | Std.   | 8        | 4100 382 |          |                   |
|   | .005 o/s   | 8        | 4100 383 |          |                   |
|   | .015 o/s   | 8        | 4100 384 |          |                   |
|   | .030 o/s   | 8        | 4100 385 |          |                   |
|   | 360 Eng. Hi Perf. 1978                           |          |          |          |                   |
|   | Std.   | 8        |          | 3751 673 |                   |
|   | .005 o/s   | 8        |          | 3751 674 |                   |
|   | .015 o/s   | 8        |          | 3751 675 |                   |
|   | .030 o/s   | 8        |          | 3751 676 |                   |
|   | 360 Eng. Hi Perf. 1979-80                        |          |          |          |                   |
|   | Std.   | 8        |          | 4104 402 |                   |
|   | .005 o/s   | 8        |          | 4104 403 |                   |
|   | .015 o/s   | 8        |          | 4104 404 |                   |
|   | .030 o/s   | 8        |          | 4104 405 |                   |
|   | 360-3 Eng. 1978-79                               |          |          |          |                   |
|   | Std.   | 8        |          | 4006 781 |                   |
|   | .005 o/s   | 8        |          | 4006 782 |                   |
|   | .015 o/s   | 8        |          | 4006 783 |                   |
|   | .030 o/s   | 8        |          | 4006 784 |                   |
|   | 360-3 Eng. w/Calif. 1980-81                      |          |          |          |                   |
|   | Std.   | 8        |          | 4105 061 |                   |
|   | .005 o/s   | 8        |          | 4105 062 |                   |
|   | .015 o/s   | 8        |          | 4105 063 |                   |
|   | .030 o/s   | 8        |          | 4105 064 |                   |
|   | 360-3 Eng. w/o Calif. 1980-81                    |          |          |          |                   |
|   | Std.   | 8        |          | 4006 781 |                   |
|   | .005 o/s   | 8        |          | 4006 782 |                   |
|   | .015 o/s   | 8        |          | 4006 783 |                   |
|   | .030 o/s   | 8        |          | 4006 784 |                   |
|   | 400-1 & 440-1 Eng.                               |          |          |          |                   |
|   | Std.   | 8        |          | 3830 721 | 3830 721          |

**LIGHT DUTY CODES:** A = All Sport Utility (Ramcharger). B = All Compact Models. D = Conventional Cab.  
 AD = 2 Wheel Drive Only (Ramcharger). CB-MB = Compact Front Section Only. W = Conventional Cab 4 Wheel Drive.  
 AW = 4 Wheel Drive Only (Ramcharger). P = Forward Control Chassis. M = Motor Home.

**MEDIUM-HEAVY CODES:** XNT = Low Cab Forward. D = Conventional Cab. S = School Bus. W = 4-Wheel Drive.

AR=Use as Required

# = New Part Number

Printed in U.S.A.

June, 1982

| DESCRIPTION   |                                   | 318 ENG. | 360 ENG. | 400 ENG. | 440 ENG. |
|---|-----------------------------------|----------|----------|----------|----------|
| <b>CAMSHAFT, VALVES, ROCKER SHAFT, TIMING CHAIN</b> |                                   |          |          |          |          |
|   | .005 o/s                          | 8        |          | 3830 722 | 3830 722 |
|   | .015 o/s                          | 8        |          | 3830 723 | 3830 723 |
|   | .030 o/s                          | 8        |          | 3830 724 | 3830 724 |
|   | 440-3 Eng.                        |          |          |          |          |
|   | Std.                              | 8        |          |          | 3751 622 |
|   | .005 o/s                          | 8        |          |          | 3751 623 |
|   | .015 o/s                          | 8        |          |          | 3751 624 |
|   | .030 o/s                          | 8        |          |          | 3751 625 |
| 14  | ROD, Valve Push                   | 16       | 4095 291 | 4095 291 | 2899 594 |
|   | 360 Eng. Hi Perf.                 | 16       |          | 2899 567 |          |
| 15  | SPACER, Valve Rocker              | 8        |          |          | 1737 756 |
| 16  | TAB, Timing Chain Oil             | 1        | 3671 649 | 3671 649 |          |
| 17  | KEY, Camshaft Sprocket            | 1        | 106 751  | 106 751  |          |
| 18  | CAMSHAFT                          |          |          |          |          |
|   | 1978-79                           | 1        | 3512 635 | 4042 000 |          |
|   | 1980-81                           | 1        | 4179 768 | 5214 658 |          |
|   | 360 Eng. Hi Perf. 1978-79         | 1        |          | 4041 998 |          |
|   | 1980                              | 1        |          | 5214 671 |          |
|   | 360-3 Eng., 1978-79               | 1        |          | 3830 650 |          |
|   | 1980-81                           | 1        |          | 5214 724 |          |
|   | 400 - 440 Eng.                    | 1        |          |          | 4071 085 |
| 19  | PLUG, Camshaft Rear Bearing       | 1        | 1821 722 | 1821 722 | 2402 905 |
| 20  | BEARING, Camshaft                 |          |          |          |          |
|   | 1978-79                           |          |          |          |          |
|   | No. 1                             | 1        | 3830 603 | 3830 603 | 3830 604 |
|   | No. 2                             | 1        | 1632 523 | 1632 523 | 1821 772 |
|   | No. 3                             | 1        | 1632 524 | 1632 524 | 1821 773 |
|   | No. 4                             | 1        | 1632 525 | 1632 525 | 1821 774 |
|   | No. 5                             | 1        | 1632 526 | 1632 526 | 1821 775 |
|   | 1980-81                           |          |          |          |          |
|   | No. 1                             | 1        | 3830 603 | 3830 603 |          |
|   | No. 2                             | 1        | 4179 776 | 4179 776 |          |
|   | No. 3                             | 1        | 4179 777 | 4179 777 |          |
|   | No. 4                             | 1        | 4179 778 | 4179 778 |          |
|   | No. 5                             | 1        | 1632 526 | 1632 526 |          |
| 21  | DOWEL, Camshaft Sprocket          | 1        |          |          | 141 195  |
| 22  | PLATE, Camshaft Sprocket Thrust   | 1        | 1618 670 | 1618 670 |          |
| 23  | SCREW, Thrust Plate               | 3        | 191 674  | 191 674  |          |
| 24  | SPROCKET, Camshaft                | 1        | 2843 610 | 2843 610 | 2532 490 |
|   | 360 Eng. Hi Perf. & 360-3 Eng.    | 1        |          | 2899 556 |          |
|   | 440-3 Eng.                        | 1        |          |          | 2463 037 |
| 25  | CHAIN, Timing                     | 1        | 3514 182 | 3514 182 | 3420 053 |
|   | 360-3 Eng.                        | 1        |          | 1327 319 |          |
|   | 440-3 Eng.                        | 1        |          |          | 2205 569 |
| 26  | WASHER, Sprocket Retainer Screw   | 1        | 1618 732 | 1618 732 | 6023 053 |
| 27  | SCREW, Camshaft Sprocket Retainer | 1        | 6029 735 | 6029 735 |          |
| 28  | ECCENTRIC, Camshaft               | 1        | 2843 661 | 2843 661 |          |
| 29  | RETAINER, Valve Rocker Shaft      |          |          |          |          |
|   | Ends & Center                     | 6        | 2463 322 | 2463 322 | 2463 282 |

LIGHT A = All Sport Utility (Ramcharger).

B = All Compact Models.

D = Conventional Cab.

DUTY AD = 2 Wheel Drive Only (Ramcharger).

CB-MB = Compact Front Section Only.

W = Conventional Cab 4 Wheel Drive.

CODES: AW = 4 Wheel Drive Only (Ramcharger).

P = Forward Control Chassis.

M = Motor Home.

MEDIUM-HEAVY CODES: XNT = Low Cab Forward. D = Conventional Cab. S = School Bus. W = 4-Wheel Drive.

AR=Use as Required

# = New Part Number

Printed in U.S.A.

June, 1982

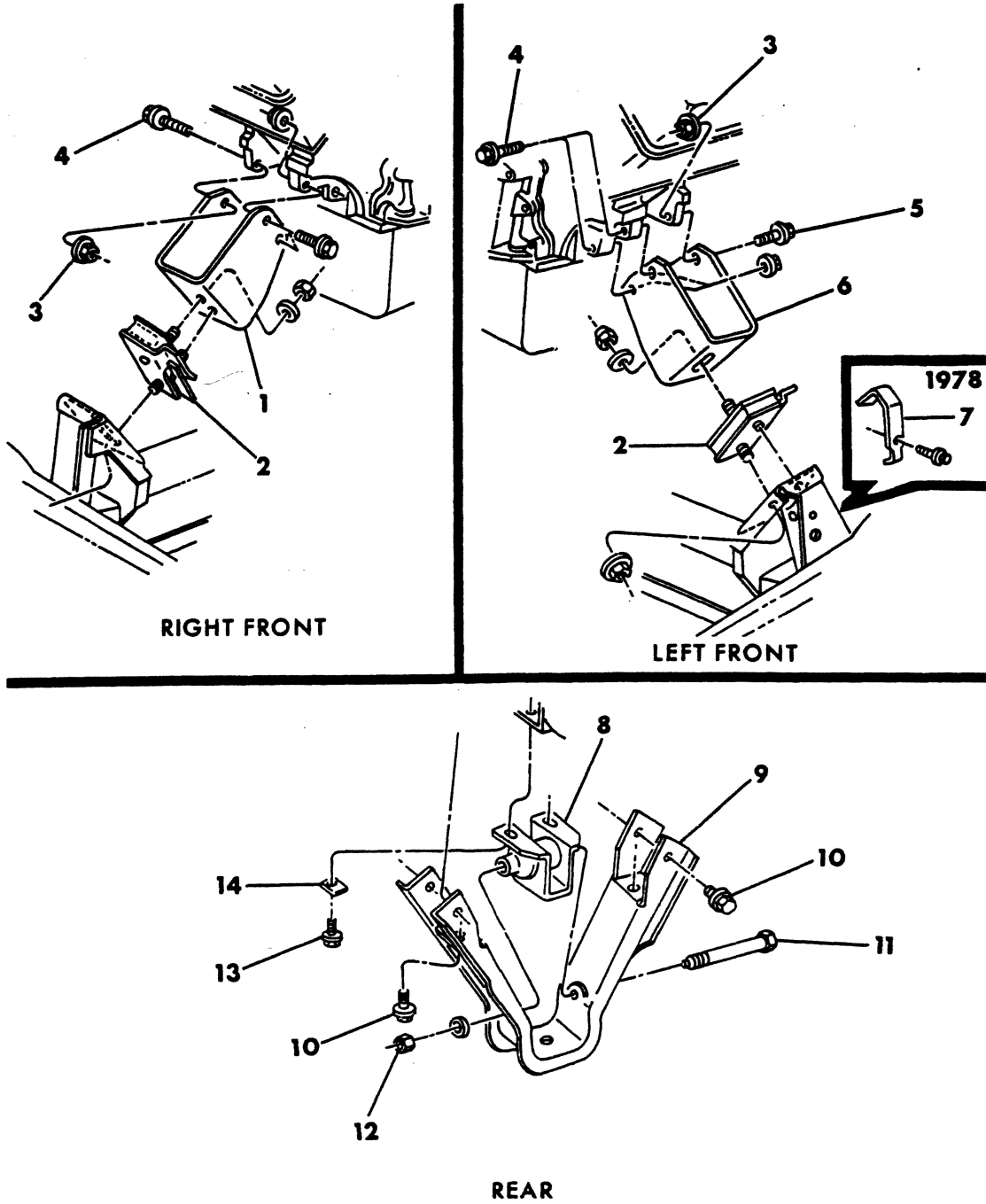






ENGINE MOUNTINGS  
B-CB-MB

8309 700A

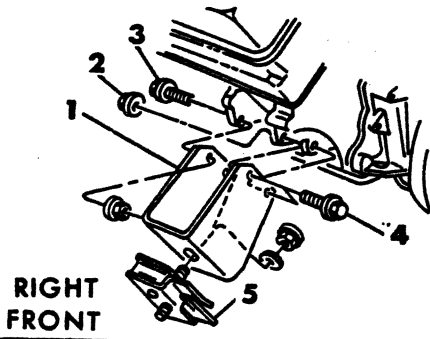


| ITEM                    | PART NUMBER | QTY | MODEL | DESCRIPTION                                  |
|-------------------------|-------------|-----|-------|--|
| <b>ENGINE MOUNTINGS</b> |             |     |       |  |
| <b>B-CB-MB</b>          |             |     |       |  |
| 1                       |             |     |       | BRACKET, Eng. Front Support - Right          |
|                         | 3894 712    | 1   |       | 318 - 360 Eng. 1978                          |
|                         | 3897 272    | 1   |       | 318 - 360 Eng. 1979-80-81                    |
|                         | 3898 710    | 1   |       | 400 - 440 Eng. 1978                          |
|                         | 4032 048    | 1   |       | 440 Eng. 1979                                |
| 2                       |             |     |       | INSULATOR, Eng. Front Support                |
|                         | 3632 998    | 2   |       | 1978   |
|                         | 4088 033    | 2   |       | 1979-80-81                                   |
| 3                       |             | 3   |       | NUT (not serviced)                           |
| 4                       |             | 4   |       | BOLT   |
| 5                       | 6030 713    | 2   |       | BOLT   |
| 6                       |             |     |       | BRACKET, Eng. Front Support - Left           |
|                         | 4112 853    | 1   |       | 318 Eng.                                     |
|                         | 3497 409    | 1   |       | 360 Eng.                                     |
|                         | 3823 407    | 1   |       | 400 - 440 Eng.                               |
| 7                       | 3827 147    | 1   |       | STRAP 1978                                   |
| 8                       | 4032 295    | 1   |       | INSULATOR, Eng. Rear Support                 |
| 9                       |             |     |       | SUPPORT, Eng. Rear                           |
|                         | 2955 694    | 1   |       | 318 - 360 Eng.                               |
|                         | 3821 620    | 1   |       | 400 - 440 Eng.                               |
| 10                      | 9416 171    | 6   |       | SCREW  |
| 11                      | 6028 237    | 1   |       | BOLT   |
| 12                      | 152 348     | 1   |       | NUT  |
| 13                      | 6029 770    | 2   |       | SCREW  |
| 14                      | 3410 700    | 2   |       | SPACER, Eng. Rear Support Insul. Brkt. Screw |

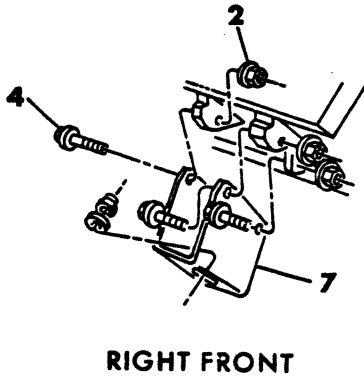
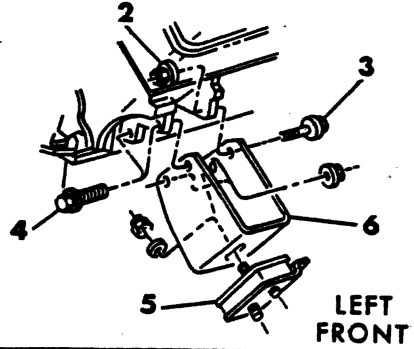
|  |                                       |                                     |                                     |
|--|---------------------------------------|-------------------------------------|-------------------------------------|
| <b>LIGHT</b>   | A = All Sport Utility (Ramcharger).   | B = All Compact Models.             | D = Conventional Cab.               |
| <b>DUTY</b>  | AD = 2 Wheel Drive Only (Ramcharger). | CB-MB = Compact Front Section Only. | W = Conventional Cab 4-Wheel Drive. |
| <b>CODES:</b>  | AW = 4 Wheel Drive Only (Ramcharger). | P = Forward Control Chassis.        | M = Motor Home.                     |
| <b>MEDIUM-HEAVY CODES:</b> XNT = Low Cab Forward. D = Conventional Cab. S = School Bus. W = 4-Wheel Drive. |                                       |                                     |                                     |
| AR=Use as Required   | # = New Part Number                   | Printed in U.S.A.                   | June, 1982                          |

ENGINE MOUNTINGS  
A-D-W MODEL

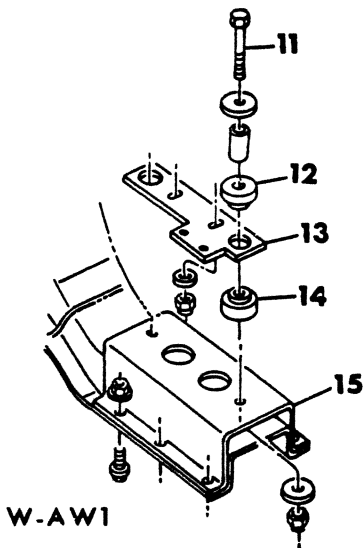
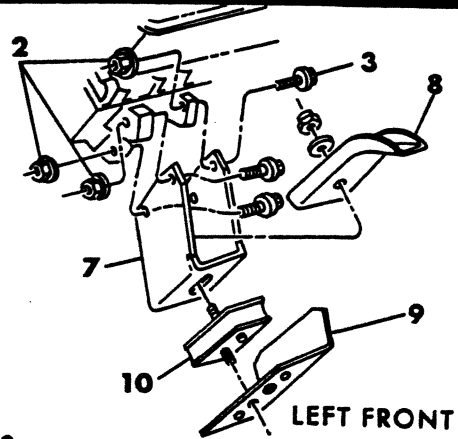
8309 725



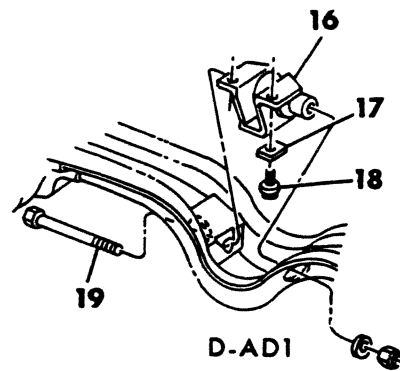
318-360



400-440



REAR



| ITEM                                    | PART NUMBER | QTY | MODEL    | DESCRIPTION                                  |
|---|-------------|-----|----------|--|
| <b>ENGINE MOUNTINGS<br/>A-D-W MODEL</b> |             |     |          |  |
| 1                                       | 3894 712    | 1   | D-AD     | BRACKET, Eng. Front Support - Right          |
|   | 3897 272    | 1   | W-AW-RD2 |  |
|   | 3894 704    | 1   | D2,3     | w/RHD  |
| 2                                       |             | 6   |          | NUT (not serviced)                           |
| 3                                       | 6030 713    | 2   |          | BOLT   |
| 4                                       |             | 4   |          | BOLT   |
| 5                                       |             |     |          | INSULATOR, Eng. Front Support                |
|   | 3632 998    | 2   |          | 1978   |
|   | 4088 033    | 2   |          | 1979-80-81                                   |
|   | 3637 939    | 2   | D2,3     | w/RHD  |
| 6                                       |             |     |          | BRACKET, Eng. Front Support - Left           |
|   | 4112 853    | 1   |          | 318 Eng.                                     |
|   | 3497 409    | 1   |          | 360 Eng.                                     |
| 7                                       |             |     |          | BRACKET, Eng. Mtg.                           |
|   | 3496 899    | 2   | D-AD     |  |
|   | 3897 274    | 1   | W-AW     | Right  |
|   | 3823 215    | 1   | W-AW     | Left   |
| 8                                       | 3735 084    | 1   | D-AD     | RESTRICTOR, Roll - Left                      |
| 9                                       | 3736 607    | 2   | D-AD     | SHIELD, Heat                                 |
| 10                                      | 3632 998    | 2   |          | INSULATOR                                    |
| 11                                      | 271 885     | 2   | W-AW     | BOLT   |
| 12                                      | 3820 921    | 2   | W-AW     | INSULATOR - Upper                            |
| 13                                      |             |     |          | PLATE, Rear Support Trans. Insul. Mtg.       |
|   | 3820 924    | 1   | W-AW     | 1979   |
|   | 4213 374    | 1   | W-AW     | 1980-81                                      |
| 14                                      | 4089 127    | 1   | W-AW     | INSULATOR - Lower                            |
| 15                                      | 3821 225    | 1   | W-AW     | ADAPTER, w/7" Rail w/133" & 149" W/B         |
| 16                                      | 3491 835    | 1   | D-AD     | INSULATOR, Eng. Rear Support                 |
| 17                                      | 3410 700    | 1   | D-AD     | SPACER, Eng. Rear Support Insul. Brkt. Screw |
| 18                                      | 6029 770    | 2   | D-AD     | SCREW  |
| 19                                      | 6028 237    | 1   | D-AD     | BOLT   |

**LIGHT DUTY CODES:**  
 A = All Sport Utility (Ramcharger).  
 AD = 2 Wheel Drive Only (Ramcharger).  
 AW = 4 Wheel Drive Only (Ramcharger).

B = All Compact Models.  
 CB-MB = Compact Front Section Only.  
 P = Forward Control Chassis.

D = Conventional Cab.  
 W = Conventional Cab 4 Wheel Drive.  
 M = Motor Home.

**MEDIUM-HEAVY CODES:** XNT = Low Cab Forward. D = Conventional Cab. S = School Bus. W = 4-Wheel Drive.

AR=Use as Required

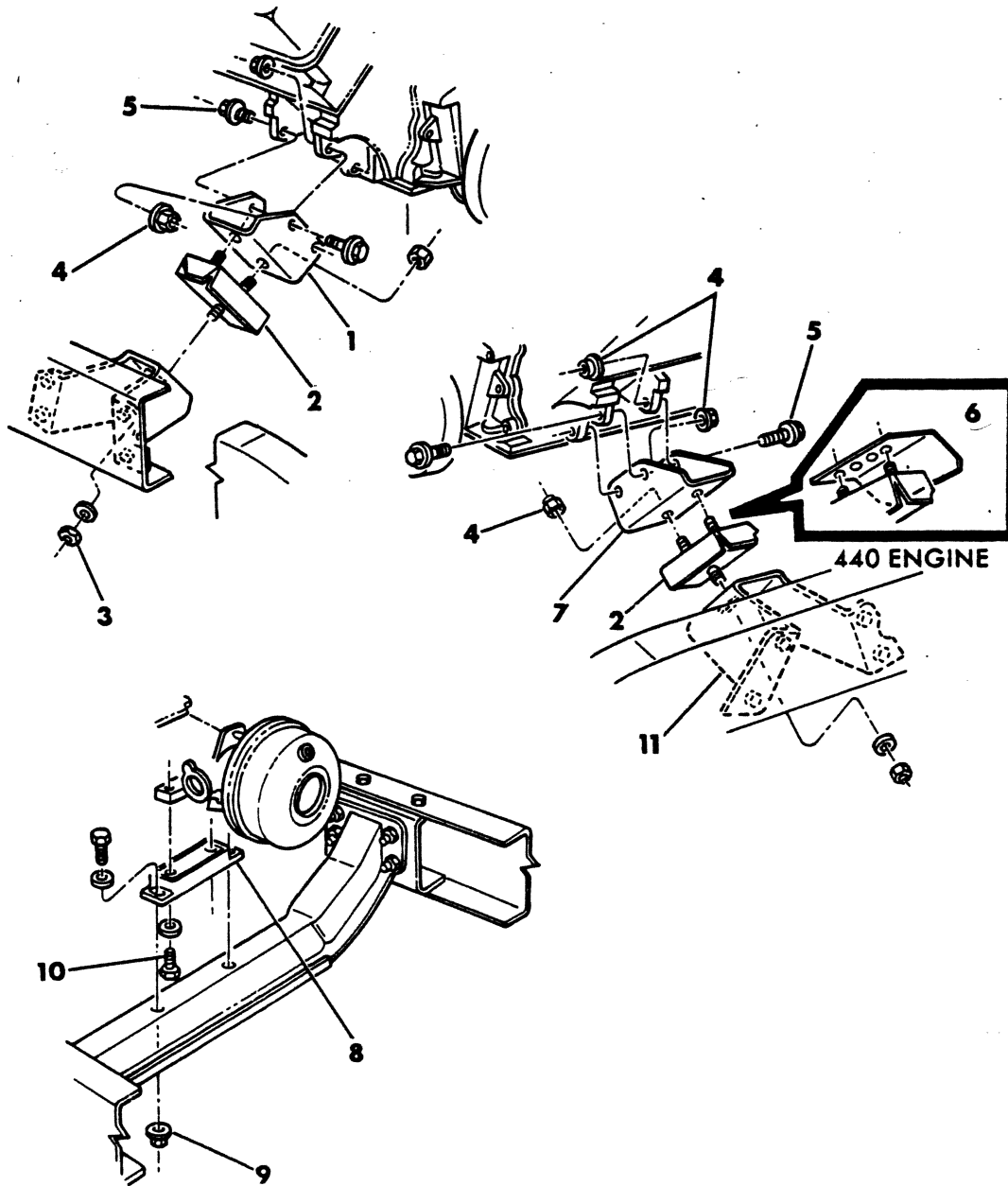
# = New Part Number

Printed in U.S.A.

June, 1982

8309 730A

ENGINE MOUNTINGS  
360 - 440 ENGINE  
MOTOR HOME



| ITEM                    | PART NUMBER | QTY | MODEL | DESCRIPTION                         |
|-------------------------|-------------|-----|-------|-------------------------------------|
| <b>ENGINE MOUNTINGS</b> |             |     |       |                                     |
| <b>360 - 440 ENGINE</b> |             |     |       |                                     |
| <b>MOTOR HOME</b>       |             |     |       |                                     |
| 1                       |             |     |       | BRACKET, Eng. Front Support - Right |
|                         | 4036 002    | 1   |       | 360 Eng.                            |
|                         | 3894 718    | 1   |       | 440 Eng.                            |
| 2                       | 4037 692    | 2   |       | INSULATOR, Eng. Front Support       |
| 3                       | 152 348     | 2   |       | NUT                                 |
| 4                       |             | 6   |       | NUT (not serviced)                  |
| 5                       | 6030 713    | 2   |       | BOLT                                |
| 6                       | 3736 607    | 1   |       | SHIELD, Heat 440 Eng.               |
| 7                       |             |     |       | BRACKET, Eng. Front Support - Left  |
|                         | 4036 001    | 1   |       | 360 Eng.                            |
|                         | 3894 719    | 1   |       | 440 Eng.                            |
| 8                       | 3637 751    | 1   | M3    | INSULATOR, Eng. Rear Support        |
|                         | 3637 751    | 1   | M4    | w/137" W.B.                         |
|                         | 3632 984    | 1   | M4    | w/159" W.B.                         |
|                         | 3632 984    | 1   | M5,6  | All Engines                         |
| 9                       |             | 2   |       | SCREW (not serviced)                |
| 10                      | 181 114     | 2   |       | BOLT                                |
| 11                      | 4033 000    | 2   |       | BRACKET, Frame Eng. Front Support   |

|  |                                       |                                     |                                     |
|--|---------------------------------------|-------------------------------------|-------------------------------------|
| <b>LIGHT</b>   | A = All Sport Utility (Ramcharger).   | B = All Compact Models.             | D = Conventional Cab.               |
| <b>DUTY</b>  | AD = 2 Wheel Drive Only (Ramcharger). | CB-MB = Compact Front Section Only. | W = Conventional Cab 4 Wheel Drive. |
| <b>CODES:</b>  | AW = 4 Wheel Drive Only (Ramcharger). | P = Forward Control Chassis.        | M = Motor Home.                     |
| <b>MEDIUM-HEAVY CODES:</b> XNT = Low Cab Forward. D = Conventional Cab. S = School Bus. W = 4-Wheel Drive. |                                       |                                     |                                     |

AR=Use as Required

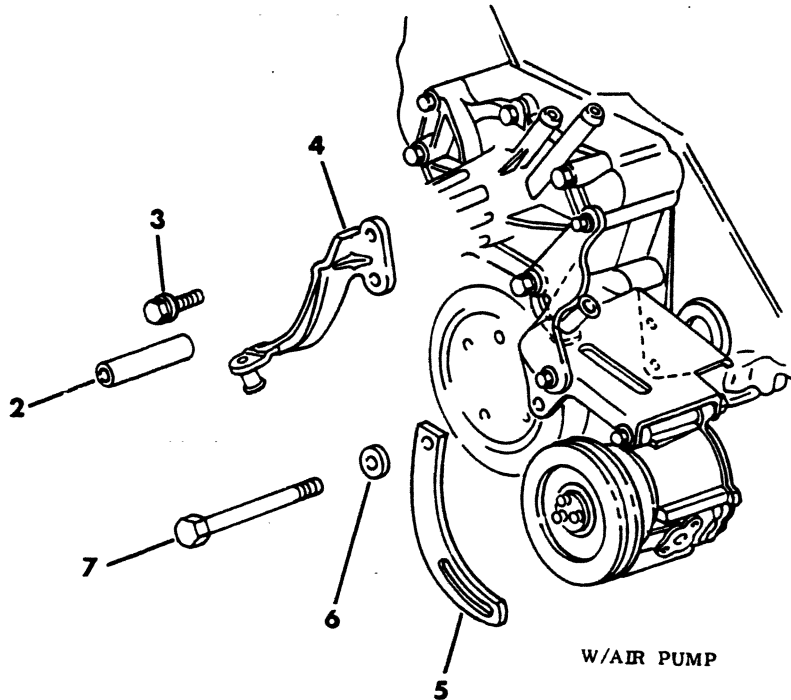
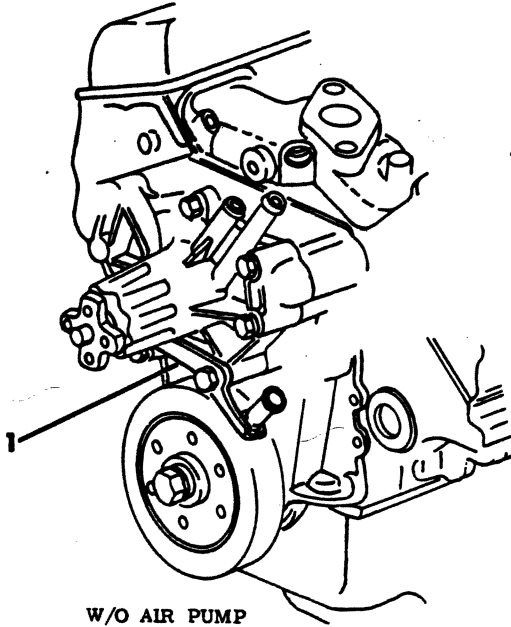
# =New Part Number

Printed in U.S.A.

June, 1982

TIMING INDICATOR

8309 750B





| ITEM                    | PART NUMBER | QTY | MODEL | DESCRIPTION                   |
|-------------------------|-------------|-----|-------|-------------------------------|
| <b>TIMING INDICATOR</b> |             |     |       |                               |
| 1                       |             |     |       | BRACKET w/INDICATOR - Upper   |
|                         | 4027 008    | 1   |       | 318 Eng.                      |
|                         | 4095 625    | 1   |       | 360 Eng.                      |
|                         | 4095 499    | 1   |       | 400 - 440 Eng.                |
| 2                       | 4112 979    | 1   |       | SPACER, Long                  |
| 3                       | 6029 713    | 1   |       | SCREW                         |
| 4                       |             |     |       | BRACKET w/INDICATOR - Lower   |
|                         | 4089 726    | 1   |       | 318 Eng. - Red I.D.           |
|                         | 4089 727    | 1   |       | 360 Eng. - Green I.D.         |
| 5                       |             | 1   |       | STRAP, Air Pump Adjust (Ref.) |
| 6                       | 6022 190    | 1   |       | WASHER                        |
| 7                       | 9427 342    | 1   |       | SCREW                         |

**LIGHT**    A = All Sport Utility (Ramcharger).                    B = All Compact Models.                    D = Conventional Cab.  
**DUTY**      AD = 2 Wheel Drive Only (Ramcharger).                    CB-MB = Compact Front Section Only.                    W = Conventional Cab 4 Wheel Drive.  
**CODES:**    AW = 4 Wheel Drive Only (Ramcharger).                    P = Forward Control Chassis.                    M = Motor Home.

**MEDIUM-HEAVY CODES:** XNT = Low Cab Forward. D = Conventional Cab. S = School Bus. W = 4-Wheel Drive.

AR=Use as Required

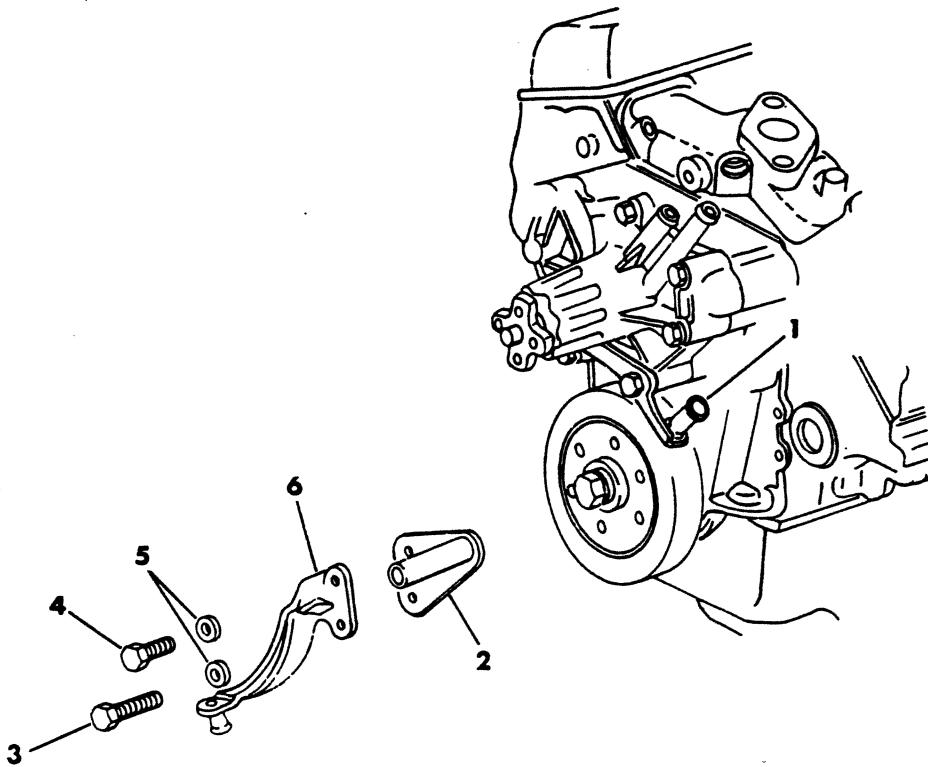
# =New Part Number

Printed in U.S.A.

June, 1982

8309 775

TIMING INDICATOR  
MOTOR HOME



| ITEM                                   | PART NUMBER | QTY | MODEL | DESCRIPTION                          |
|--|-------------|-----|-------|--------------------------------------|
| <b>TIMING INDICATOR<br/>MOTOR HOME</b> |             |     |       |                                      |
| 1                                      |             |     |       | BRACKET w/INDICATOR - Upper          |
|  | 4095 625    | 1   |       | 360 Eng.                             |
|  | 4095 499    | 1   |       | 440 Eng.                             |
| 2                                      | 4031 483    | 1   |       | BRACKET                              |
| 3                                      | 181 118     | 1   |       | SCREW                                |
| 4                                      | 2121 588    | 1   |       | SCREW                                |
| 5                                      | 6022 190    | AR  |       | WASHER                               |
| 6                                      | 4089 727    | 1   |       | BRACKET w/INDICATOR - Lower 360 Eng. |

|  |                                       |                                     |                                     |
|--|---------------------------------------|-------------------------------------|-------------------------------------|
| <b>LIGHT</b>   | A = All Sport Utility (Ramcharger).   | B = All Compact Models.             | D = Conventional Cab.               |
| <b>DUTY</b>  | AD = 2 Wheel Drive Only (Ramcharger). | CB-MB = Compact Front Section Only. | W = Conventional Cab 4 Wheel Drive. |
| <b>CODES:</b>  | AW = 4 Wheel Drive Only (Ramcharger). | P = Forward Control Chassis.        | M = Motor Home.                     |
| <b>MEDIUM-HEAVY CODES:</b> XNT = Low Cab Forward. D = Conventional Cab. S = School Bus. W = 4-Wheel Drive. |                                       |                                     |                                     |

AR=Use as Required

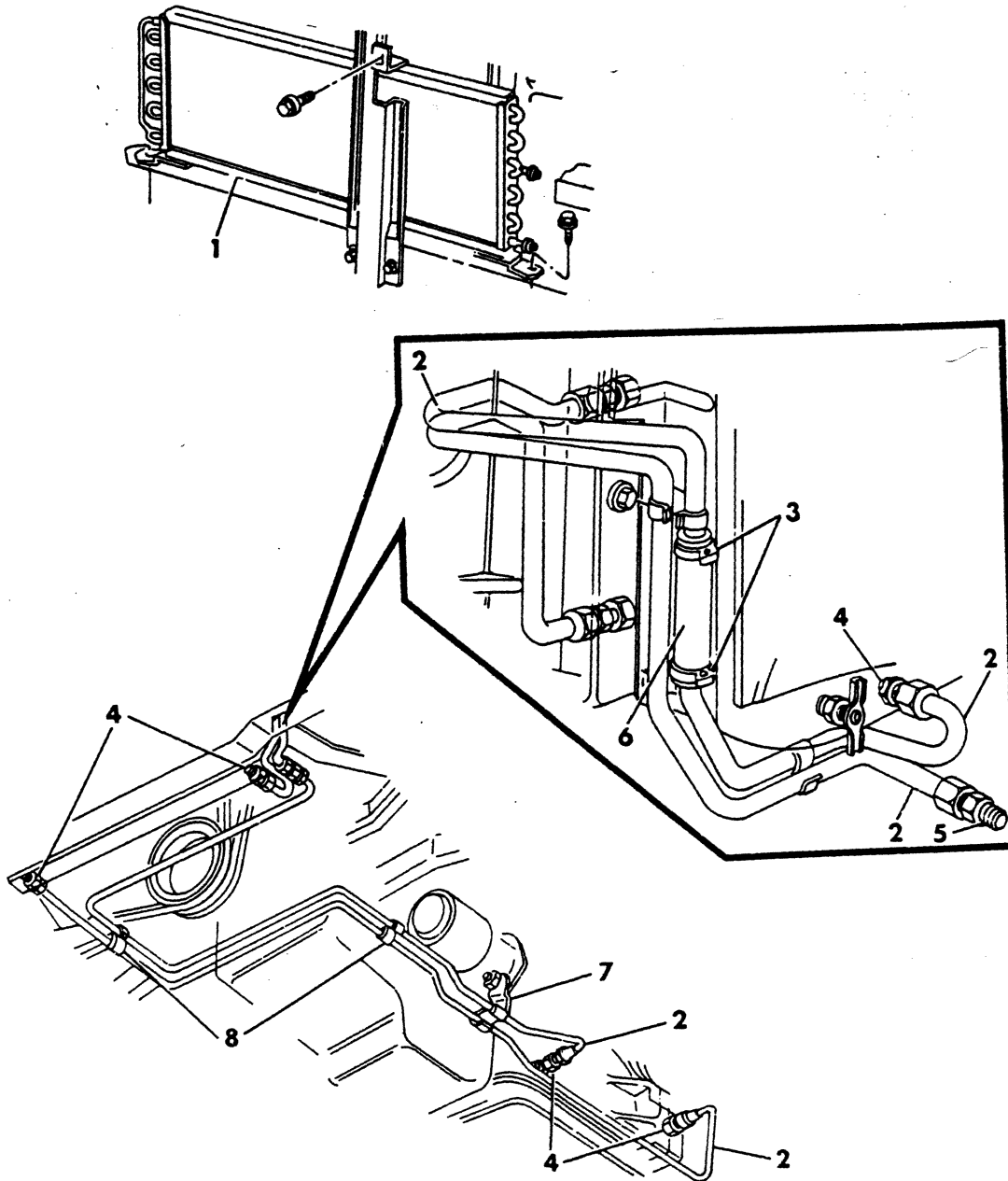
# = New Part Number

Printed in U.S.A.

June, 1982

TRANS. AUXILIARY OIL COOLER & LINES  
B-CB-MB  
1978-79

8309 875



| ITEM   | PART NUMBER | QTY | MODEL | DESCRIPTION                          |
|--|-------------|-----|-------|--------------------------------------|
| <b>TRANS. AUXILIARY OIL COOLER &amp; LINES</b> |             |     |       |                                      |
| <b>B-CB-MB</b>                                 |             |     |       |                                      |
| <b>1978-79</b>                                 |             |     |       |                                      |
| 1  | 4116 344    | 1   |       | COOLER, Trans. Oil                   |
| 2  | 1843 253    | AR  |       | TUBING, Steel (serv. in 25 ft. roll) |
| 3  | 2463 937    | 2   |       | CLAMP                                |
| 4  | 118 749     | AR  |       | ADAPTER                              |
| 5  | 118 801     | AR  |       | UNION                                |
| 6  | 4026 139    | 1   |       | HOSE                                 |
| 7  |             |     |       | BRACKET, Tube Mtg.                   |
|  | 3698 463    | 1   |       | 225 Eng.                             |
|  | 3698 668    | 1   |       | 318 & 360 Eng.                       |
|  | 3698 463    | 1   |       | 400 & 440 Eng.                       |
| 8  |             | AR  |       | CLIP, S-Type (not serviced)          |

|               |                                       |                                     |                                     |
|---------------|---------------------------------------|-------------------------------------|-------------------------------------|
| <b>LIGHT</b>  | A = All Sport Utility (Ramcharger).   | B = All Compact Models.             | D = Conventional Cab.               |
| <b>DUTY</b>   | AD = 2 Wheel Drive Only (Ramcharger). | CB-MB = Compact Front Section Only. | W = Conventional Cab 4 Wheel Drive. |
| <b>CODES:</b> | AW = 4 Wheel Drive Only (Ramcharger). | P = Forward Control Chassis.        | M = Motor Home.                     |

**MEDIUM-HEAVY CODES:** XNT = Low Cab Forward. D = Conventional Cab. S = School Bus. W = 4-Wheel Drive.

AR=Use as Required

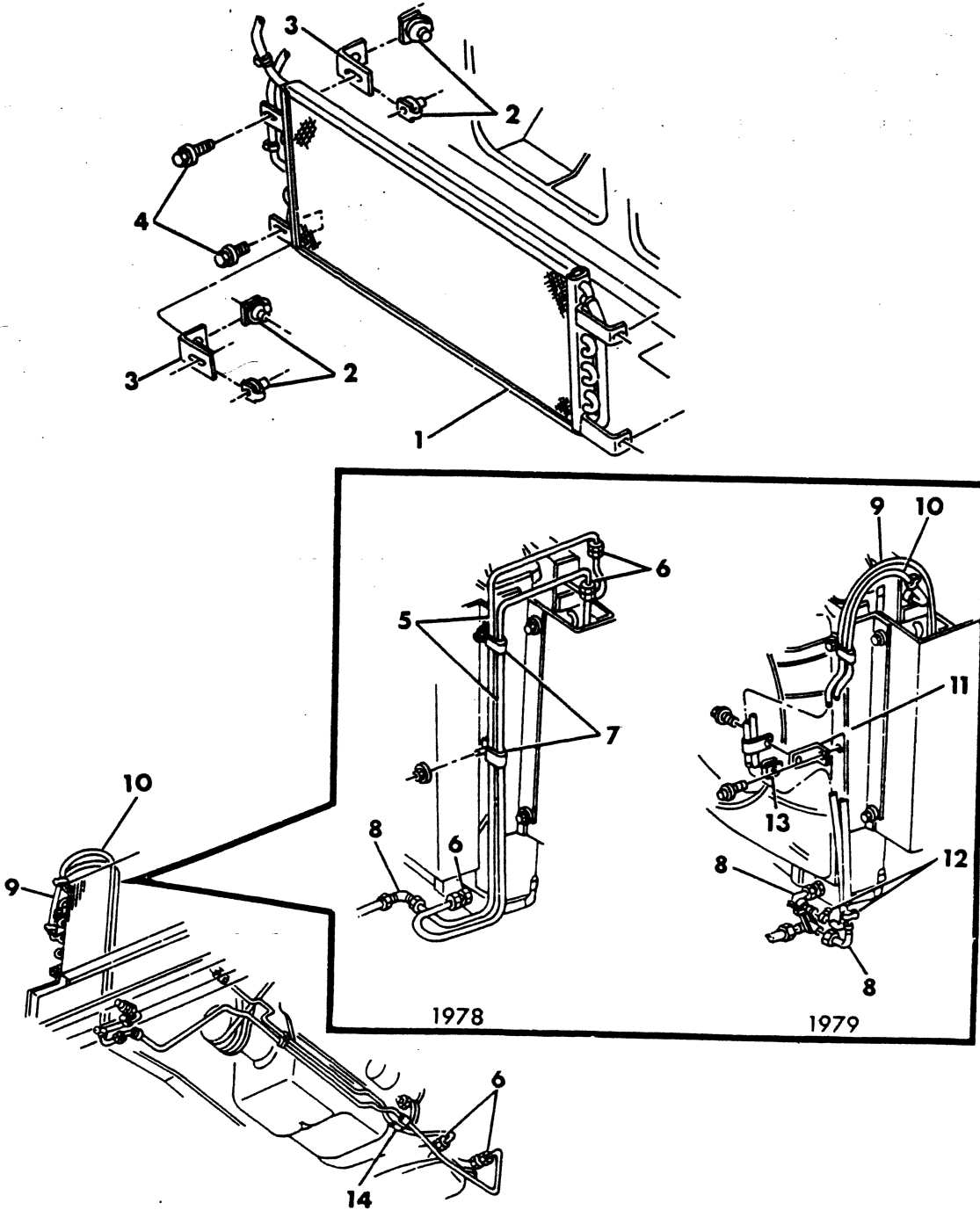
#=New Part Number

Printed in U.S.A.

June, 1982

TRANS. AUXILIARY OIL COOLER & LINES  
A-D-W MODEL  
1978-79

8309 885



| ITEM   | PART NUMBER | QTY | MODEL | DESCRIPTION                          |
|--|-------------|-----|-------|--------------------------------------|
| <b>TRANS. AUXILIARY OIL COOLER &amp; LINES</b> |             |     |       |                                      |
| <b>A-D-W MODEL</b>                             |             |     |       |                                      |
| <b>1978-79</b>                                 |             |     |       |                                      |
| 1  | 4086 460    | 1   |       | COOLER, Trans. Oil                   |
| 2  |             | 6   |       | U-NUT, 1/4 - 20 (not serviced)       |
| 3  |             | 2   |       | BRACKET (not serviced)               |
| 4  | 6022 202    | 6   |       | SCREW, 1/4 - 20 x .625               |
| 5  | 1843 253    | AR  |       | TUBING, Steel (serv. in 25 ft. roll) |
| 6  | 118 749     | AR  |       | ADAPTER                              |
| 7  | 4071 095    | 2   |       | CLIP                                 |
| 8  |             | 1   |       | ELBOW, Return (not serviced)         |
| 9  | 4026 139    | 1   |       | HOSE, Pressure - 33" Long            |
| 10   | 4026 139    | 1   |       | HOSE, Return - 25" Long              |
| 11   | 2832 449    | 1   |       | BRACKET                              |
| 12   | 153 456     | AR  |       | CLAMP                                |
| 13   | 152 454     | 1   |       | U-NUT                                |
| 14   | 3698 668    | 1   |       | BRACKET, Rear                        |

**LIGHT** A = All Sport Utility (Ramcharger). B = All Compact Models. D = Conventional Cab.  
**DUTY** AD = 2 Wheel Drive Only (Ramcharger). CB-MB = Compact Front Section Only. W = Conventional Cab 4 Wheel Drive.  
**CODES:** AW = 4 Wheel Drive Only (Ramcharger). P = Forward Control Chassis. M = Motor Home.

**MEDIUM-HEAVY CODES:** XNT = Low Cab Forward. D = Conventional Cab. S = School Bus. W = 4-Wheel Drive.

AR=Use as Required

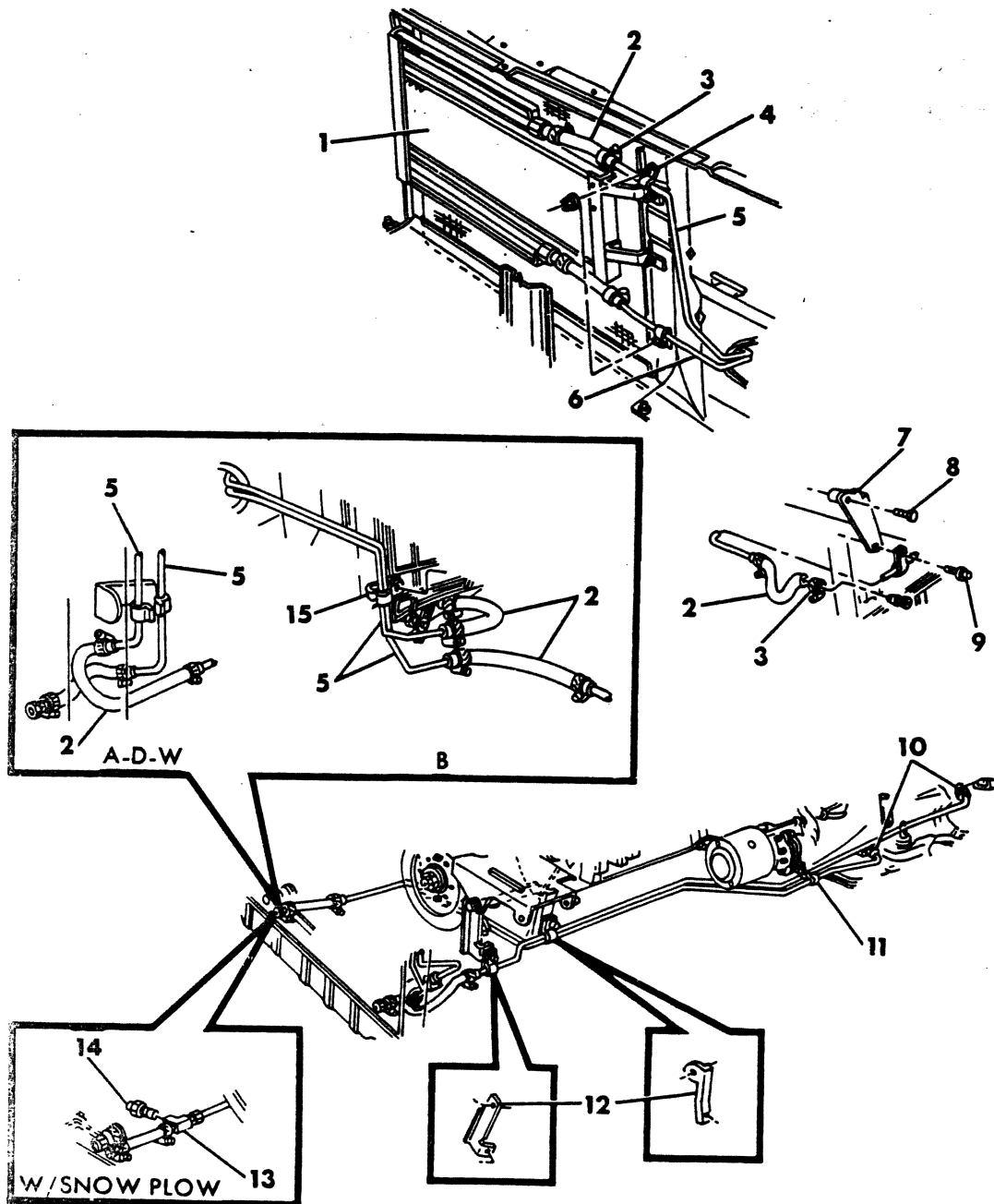
# = New Part Number

Printed in U.S.A.

June, 1982

TRANS. AUXILIARY OIL COOLER & LINES  
1980-81

8309 895A





| ITEM   | PART NUMBER | QTY | MODEL    | DESCRIPTION   |
|--|-------------|-----|----------|---|
| <b>TRANS. AUXILIARY OIL COOLER &amp; LINES</b> |             |     |          |   |
| <b>1980-81</b>                                 |             |     |          |   |
| 1  | 4167 478    | 1   | B        | COOLER, Trans. Oil                                  |
|  | 4210 594    | 1   | A-D-W    | 1980  |
|  | 4140 590    | 1   | A-D-W    | 1981  |
| 2  | 4026 139    | AR  |          | HOSE, Trans. Oil Cooler Tube (serv. in 50 ft. roll) |
| 3  | 153 456     | AR  |          | CLAMP   |
| 4  |             | AR  |          | CLIP (not serviced)                                 |
| 5  | 1843 253    | AR  |          | TUBING, Steel (serv. in 25 ft. roll)                |
| 6  | 4140 564    | 1   | B        | TUBE & HOSE, Pressure                               |
| 7  | 4140 414    | 1   |          | BRACKET, Tube Mtg. - Rt.                            |
| 8  | 181 126     | 1   |          | BOLT, 3/8 - 16 x 1 7/8                              |
| 9  |             | 2   |          | SCREW, 10 - 24 x .75 (not serviced)                 |
| 10   | 118 749     | AR  |          | ADAPTER   |
| 11   |             |     |          | BRACKET, Tube Mtg.                                  |
|  | 3698 668    | 1   |          | 1980  |
|  | 4266 066    | 1   |          | 1981  |
| 12   |             |     |          | BRACKET, Tube Mtg. - Lt.                            |
|  | 4116 709    | 1   |          | w/Air Pump  |
|  | 4140 415    | 1   |          | w/o Air Pump  |
| 13   |             |     |          | TEE BLOCK, Trans. Oil Temp. Switch w/Snowplow       |
|  | 6031 859    | 1   | W1,2-AW1 | 1980  |
|  | 6032 034    | 1   | W1,2-AW1 | 1981  |
|  | 6032 034    | 1   | B-CB-MB  | w/Auto. Trans. w/Electronic Monitor 1981            |
| 14   | 4162 816    | 1   |          | SWITCH, Trans. Oil Temp. w/Snowplow                 |
| 15   | 3404 625    | 1   |          | CLIP  |

|               |                                       |                                     |                                     |
|---------------|---------------------------------------|-------------------------------------|-------------------------------------|
| <b>LIGHT</b>  | A = All Sport Utility (Ramcharger).   | B = All Compact Models.             | D = Conventional Cab.               |
| <b>DUTY</b>   | AD = 2 Wheel Drive Only (Ramcharger). | CB-MB = Compact Front Section Only. | W = Conventional Cab 4 Wheel Drive. |
| <b>CODES:</b> | AW = 4 Wheel Drive Only (Ramcharger). | P = Forward Control Chassis.        | M = Motor Home.                     |

**MEDIUM-HEAVY CODES:** XNT = Low Cab Forward. D = Conventional Cab. S = School Bus. W = 4-Wheel Drive.

AR=Use as Required

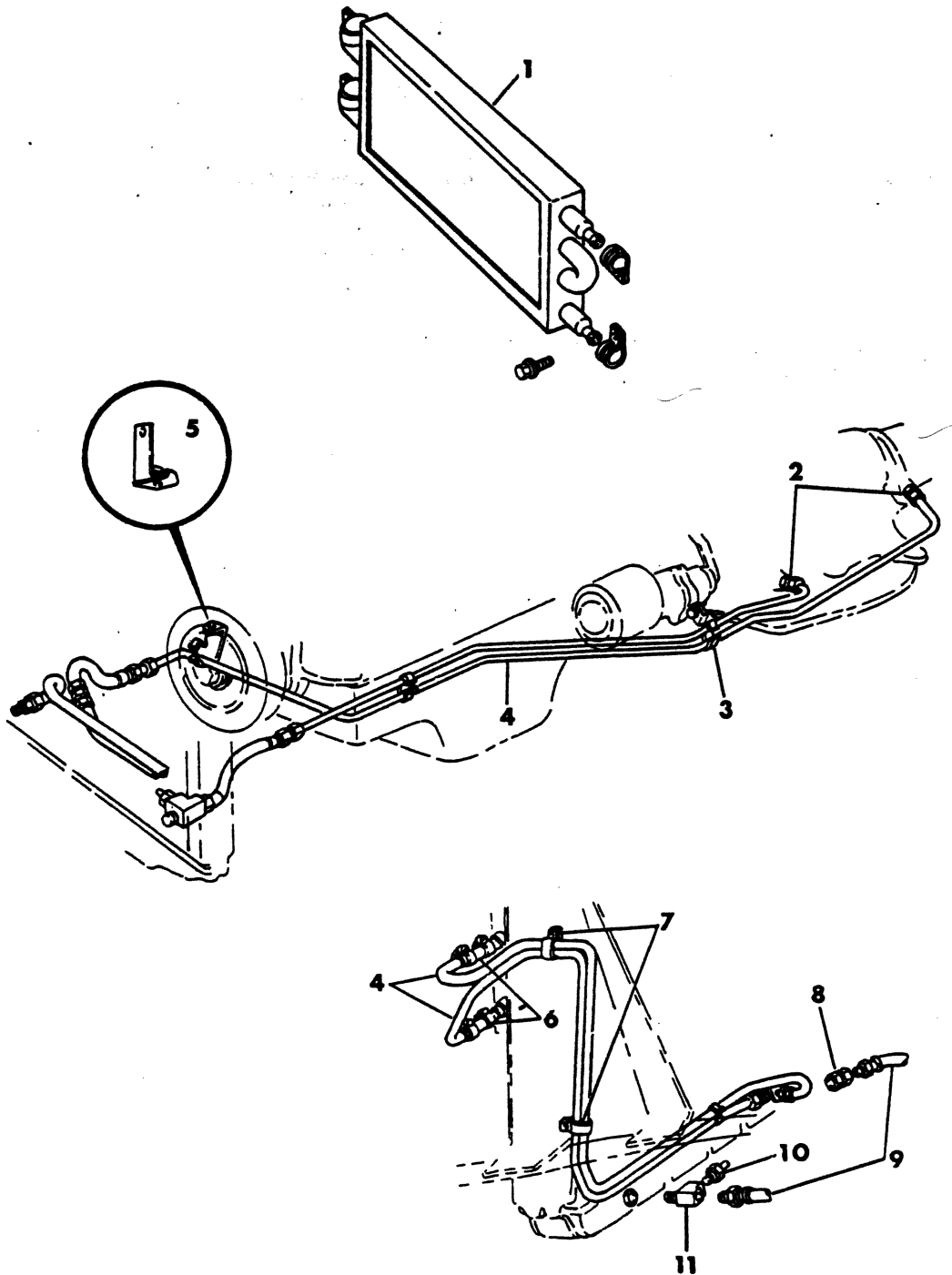
# = New Part Number

Printed in U.S.A.

June, 1982

TRANS. AUXILIARY OIL COOLER & LINES  
MOTOR HOME

8309 896



| ITEM  | PART NUMBER | QTY | MODEL | DESCRIPTION                          |
|---|-------------|-----|-------|--------------------------------------|
| <b>TRANS. AUXILIARY OIL COOLER &amp; LINES<br/>MOTOR HOME</b> |             |     |       |                                      |
| 1   | 4167 534    | 1   |       | COOLER, Trans. Oil                   |
| 2   | 118 749     | 2   |       | ADAPTER                              |
| 3   | 3698 668    | 1   |       | BRACKET, Tube Mtg. 360 - 440 Eng.    |
| 4   | 1843 253    | 1   |       | TUBING, Steel (serv. in 25 ft. roll) |
| 5   | 2832 449    | 1   |       | BRACKET, Tube Mtg. Front 446 Eng.    |
| 6   | 4026 139    | 2   |       | HOSE                                 |
| 7   | 3404 625    | 2   |       | CLIP                                 |
| 8   | 191 559     | 2   |       | ADAPTER, Tube Return                 |
| 9   | 2910 761    | 2   |       | HOSE, Oil Cooler Tube                |
| 10  | 4075 003    | 1   |       | SENDING UNIT                         |
| 11  | 4031 888    | 1   |       | TEE, Temp. Sensor                    |

|               |                                       |                                     |                                     |
|---------------|---------------------------------------|-------------------------------------|-------------------------------------|
| <b>LIGHT</b>  | A = All Sport Utility (Ramcharger).   | B = All Compact Models.             | D = Conventional Cab.               |
| <b>DUTY</b>   | AD = 2 Wheel Drive Only (Ramcharger). | CB-MB = Compact Front Section Only. | W = Conventional Cab 4 Wheel Drive. |
| <b>CODES:</b> | AW = 4 Wheel Drive Only (Ramcharger). | P = Forward Control Chassis.        | M = Motor Home.                     |

---

**MEDIUM-HEAVY CODES:** XNT = Low Cab Forward. D = Conventional Cab. S = School Bus. W = 4-Wheel Drive.

AR=Use as Required      # = New Part Number      Printed in U.S.A.      June, 1982

**CRANKCASE, CAMSHAFT & TORQUE CONVERTER  
446 ENGINE  
M4,5,6**

**ILLUSTRATION NOT AVAILABLE AT TIME OF PUBLICATION**

| ITEM | PART NUMBER | QTY | MODEL | DESCRIPTION |
|------|-------------|-----|-------|-------------|
|------|-------------|-----|-------|-------------|

**CRANKCASE, CAMSHAFT & TORQUE CONVERTER  
446 ENGINE  
M4,5,6**

NOTE: Parts not specified are serviced by International Harvester.

|    |          |    |  |  |
|----|----------|----|--|--|
|    |          | 1  |  | SHORT ENGINE                                   |
|    |          | 1  |  | GASKET SET                                     |
| 1  |          | 1  |  | SCREW, Timing Gear Mtg.                        |
| 2  |          | 1  |  | WASHER, Timing Gear Screw                      |
| 3  |          | 1  |  | GEAR SET, Timing                               |
| 4  |          | 1  |  | CAM, Fuel Pump Push Rod                        |
| 5  |          | 1  |  | GEAR, Front Distributor Drive                  |
| 6  |          | 1  |  | FLANGE, Thrust                                 |
|    |          | 1  |  | BOLT, Camshaft Thrust Flange                   |
|    |          | 1  |  | WASHER, Thrust Flange Bolt                     |
| 7  |          |    |  | BEARING, Camshaft                              |
|    |          | 1  |  | Front  |
|    |          | 4  |  | #2, 3, 4 and Rear                              |
| 8  |          | 1  |  | CAMSHAFT                                       |
| 9  |          | 1  |  | COVER, Cylinder Block Front w/Timing Indicator |
|    |          | 5  |  | BOLT, Front Cover                              |
| 10 |          | 1  |  | GASKET, Front Cover                            |
| 11 |          | 4  |  | DOWEL, Chain Case Cover 5/16 x 5/8             |
| 12 |          | 1  |  | BALL, Oil Level Ind. Hole - Chrome             |
| 13 |          | 3  |  | PLUG, Cylinder Block Drain 3/8                 |
| 14 |          | 8  |  | PLUG, Cylinder Block Core Hole Expansion       |
| 15 |          | 1  |  | GASKET, Rear Cover                             |
| 16 | 4167 125 | 1  |  | COVER, Cylinder Block - Rear                   |
|    |          | 6  |  | BOLT, Rear Cover                               |
|    | 4167 127 | 1  |  | SCREW, Rear Cover                              |
| 17 |          | 1  |  | SEAL, Rear Cover                               |
| 18 |          | 4  |  | DOWEL, Sleeve                                  |
| 19 |          | 2  |  | DOWEL, 3/8 x 1 (not serviced)                  |
| 20 |          |    |  | PLUG   |
|    |          | 1  |  | Pipe Sq. Soc. Head 1/2                         |
|    |          | 3  |  | Drain 3/8                                      |
|    |          | 2  |  | Drain 1/4                                      |
|    |          | 6  |  | Pipe Sq. Head 1/8                              |
|    |          | 2  |  | Pipe Sq. Head 1/4                              |
| 21 |          | 2  |  | PLUG, Cylinder Block Cup 1/2                   |
| 22 | 4210 790 | 1  |  | PLATE, Ring Gear & Drive                       |
| 23 | 6031 767 | 10 |  | BOLT, T/Conv. Drive Plate to Crank             |
| 24 | 4186 859 | 1  |  | TORQUE CONVERTER                               |
|    | 3515 137 | 1  |  | SEAL, T/Conv. Impeller Hub                     |
| 25 | 4167 376 | 1  |  | PLATE, Crankshaft Bolt Backing                 |
| 26 | 1949 765 | 4  |  | BOLT, Torque Converter Drive Plate             |
| 27 | 4210 792 | 1  |  | ADAPTER, Crankshaft                            |
|    | 4162 460 | 1  |  | HEATER, Engine Block (not shown)               |
|    | 4162 565 | 1  |  | CORD, Engine Block Heater Wiring (not shown)   |

|               |                                       |                                     |                                     |
|---------------|---------------------------------------|-------------------------------------|-------------------------------------|
| <b>LIGHT</b>  | A = All Sport Utility (Ramcharger).   | B = All Compact Models.             | D = Conventional Cab.               |
| <b>DUTY</b>   | AD = 2 Wheel Drive Only (Ramcharger). | CB-MB = Compact Front Section Only. | W = Conventional Cab 4 Wheel Drive. |
| <b>CODES:</b> | AW = 4 Wheel Drive Only (Ramcharger). | P = Forward Control Chassis.        | M = Motor Home.                     |

**MEDIUM-HEAVY CODES:** XNT = Low Cab Forward. D = Conventional Cab. S = School Bus. W = 4-Wheel Drive.

AR=Use as Required

#=New Part Number

Printed in U.S.A.

June, 1982

**CYLINDER HEAD & RELATED PARTS  
446 ENGINE  
M4,5,6**

**ILLUSTRATION NOT AVAILABLE AT TIME OF PUBLICATION**

| ITEM  | PART NUMBER | QTY | MODEL | DESCRIPTION                   |
|---|-------------|-----|-------|-------------------------------|
| <b>CYLINDER HEAD &amp; RELATED PARTS</b>                                  |             |     |       |                               |
| <b>446 ENGINE</b>   |             |     |       |                               |
| <b>M4,5,6</b>   |             |     |       |                               |
| <b>NOTE: Parts not specified are serviced by International Harvester.</b> |             |     |       |                               |
|   |             | 1   |       | GASKET SET, Cylinder Head     |
| 1   |             |     |       | COVER, Valve                  |
|   |             | 1   |       | Right                         |
|   |             | 1   |       | Left                          |
| 2   |             | 20  |       | WASHER, Valve Cover           |
| 3   |             | 2   |       | GASKET, Valve Cover           |
| 4   |             | 16  |       | BOLT, Rocker Arm              |
| 5   |             | 16  |       | POST, Rocker Arm              |
| 6   |             | 16  |       | ARM, Rocker                   |
| 7   |             | 32  |       | KEY, Valve Stem               |
| 8   |             | 16  |       | RETAINER, Valve Spring        |
| 9   |             | 16  |       | SHIELD, Valve Stem Oil        |
| 10  |             | 16  |       | SPRING, Valve                 |
| 11  |             | 8   |       | ROTATOR, Exhaust Valve        |
| 12  |             | 16  |       | GUIDE, Exhaust Valve          |
| 13  |             |     |       | HEAD, Cylinder                |
|   |             | 2   |       | w/Valves                      |
|   |             | 2   |       | w/Air Injection               |
|   |             | 20  |       | BOLT, Cylinder Head           |
|   |             | 20  |       | WASHER, Cylinder Head Bolt    |
|   |             | 2   |       | PIN, Locating                 |
| 14  |             |     |       | INSERT, Exhaust Valve Seat    |
|   |             | 8   |       | Std.                          |
|   |             | 8   |       | .002 o/s                      |
|   |             | 8   |       | .015 o/s                      |
|   |             | 8   |       | .030 o/s                      |
| 15  |             | 8   |       | VALVE, Exhaust                |
| 16  |             | 8   |       | VALVE, Intake                 |
| 17  |             |     |       | SEAT, Intake Valve            |
|   |             | 8   |       | Std.                          |
|   |             | 8   |       | .030 o/s                      |
| 18  |             | 2   |       | GASKET, Cylinder Head         |
| 19  |             |     |       | PLUG, Cylinder Head           |
|   |             | 4   |       | 1/4                           |
|   |             | AR  |       | 1/2                           |
| 20  |             | 16  |       | TAPPET, Hydraulic Valve       |
| 21  |             | 2   |       | PLUG, Cylinder Head Expansion |
| 22  |             |     |       | PLUG, Cylinder Head           |
|   |             | 4   |       | 1/4                           |
|   |             | AR  |       | Sq. Soc. Head 1/2             |
|   |             | AR  |       | Hex. Head 1/2                 |
|   |             | AR  |       | Hex. Soc. Special 1/2         |
| 23  |             | 16  |       | ROD, Lifter                   |
| 24  |             | 8   |       | SEAT, Intake Valve Spring     |

**LIGHT DUTY CODES:** A = All Sport Utility (Ramcharger).  
AD = 2 Wheel Drive Only (Ramcharger).  
AW = 4 Wheel Drive Only (Ramcharger).

B = All Compact Models.  
CB-MB = Compact Front Section Only.  
P = Forward Control Chassis.

D = Conventional Cab.  
W = Conventional Cab 4 Wheel Drive.  
M = Motor Home.

**MEDIUM-HEAVY CODES:** XNT = Low Cab Forward. D = Conventional Cab. S = School Bus. W = 4-Wheel Drive.

AR=Use as Required

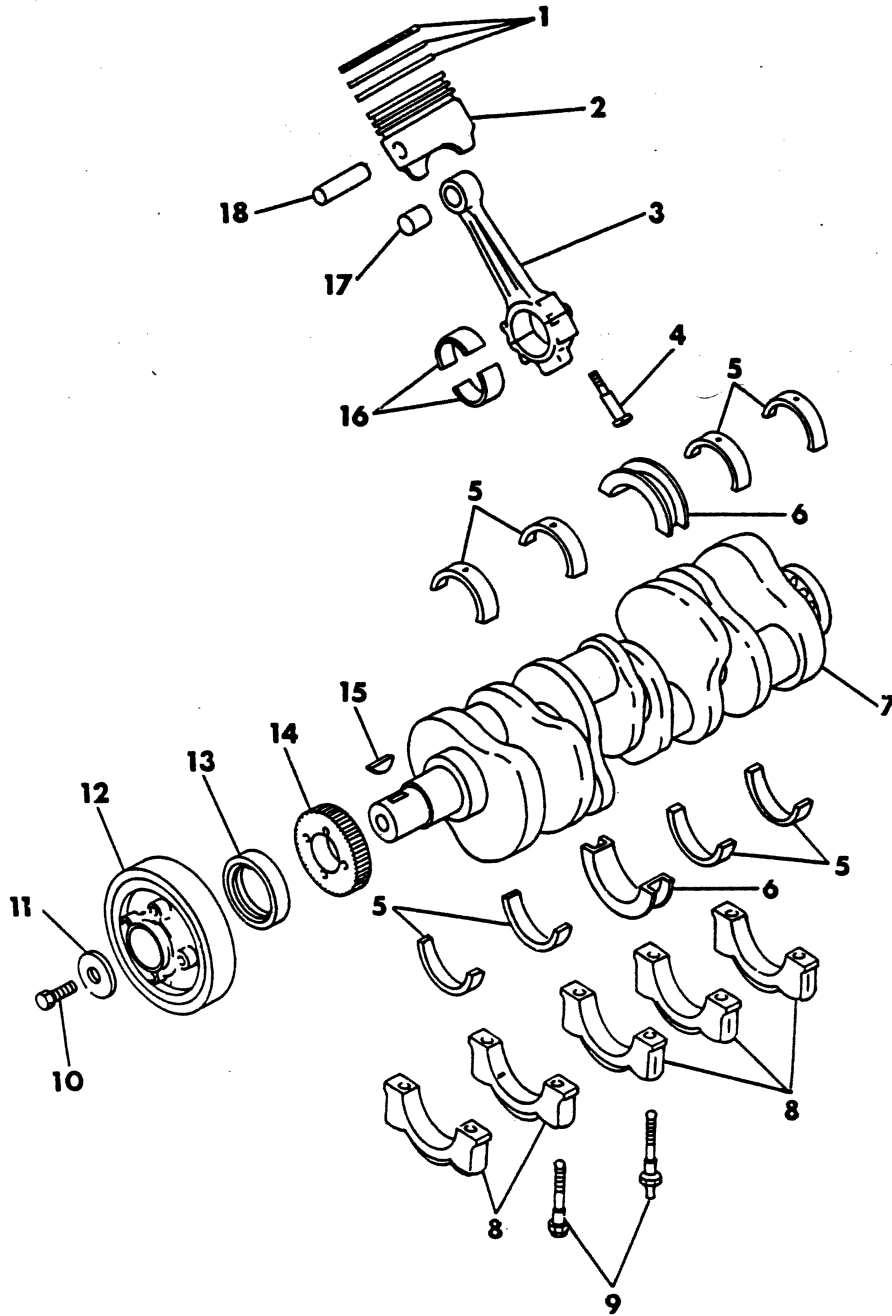
#=New Part Number

Printed in U.S.A.

June, 1982

8309 930

## CRANKSHAFT, CONN. RODS, PISTONS, RINGS 446 ENGINE M4,5,6





| ITEM | PART NUMBER | QTY | MODEL | DESCRIPTION |
|------|-------------|-----|-------|-------------|
|------|-------------|-----|-------|-------------|

**INTAKE & EXHAUST MANIFOLD  
446 ENGINE  
M4,5,6**

NOTE: Parts not specified are serviced by International Harvester.

|   |          |    |  |                                   |
|---|----------|----|--|-----------------------------------|
| 1 |          | 1  |  | PLATE, Choke Opening              |
|   |          | 4  |  | SCREW, Choke Opening Plate        |
| 2 |          | 1  |  | GASKET, Choke Opening Plate       |
| 3 | 4167 231 | 1  |  | MANIFOLD, Intake                  |
|   |          | 4  |  | BOLT, Intake Manifold 3/8 x 3 1/4 |
|   |          | 8  |  | BOLT, Intake Manifold 3/8 x 2     |
|   |          | 12 |  | L. W. Intake Manifold 3/8         |
| 4 |          |    |  | MANIFOLD, Exhaust                 |
|   | 4167 236 | 1  |  | Right                             |
|   | 4167 237 | 1  |  | Left                              |
|   |          | 1  |  | GASKET, Exhaust Manifold          |
|   |          | 16 |  | RAMP LOCK, Exhaust Manifold       |
| 5 |          | 1  |  | GASKET, Intake Manifold           |
| 6 |          | 2  |  | SEAL, Intake Manifold             |
| 7 |          | 2  |  | PLUG, Intake Manifold Sq. Hd. 3/4 |
|   |          | 2  |  | Sq. Hd. 3/8 (not serviced)        |
| 8 | 4117 225 | 1  |  | SHROUD, Exhaust Manifold Heat     |

|               |                                       |                                     |                                     |
|---------------|---------------------------------------|-------------------------------------|-------------------------------------|
| <b>LIGHT</b>  | A = All Sport Utility (Ramcharger).   | B = All Compact Models.             | D = Conventional Cab.               |
| <b>DUTY</b>   | AD = 2 Wheel Drive Only (Ramcharger). | CB-MB = Compact Front Section Only. | W = Conventional Cab 4 Wheel Drive. |
| <b>CODES:</b> | AW = 4 Wheel Drive Only (Ramcharger). | P = Forward Control Chassis.        | M = Motor Home.                     |

**MEDIUM-HEAVY CODES:** XNT = Low Cab Forward. D = Conventional Cab. S = School Bus. W = 4-Wheel Drive.

AR=Use as Required

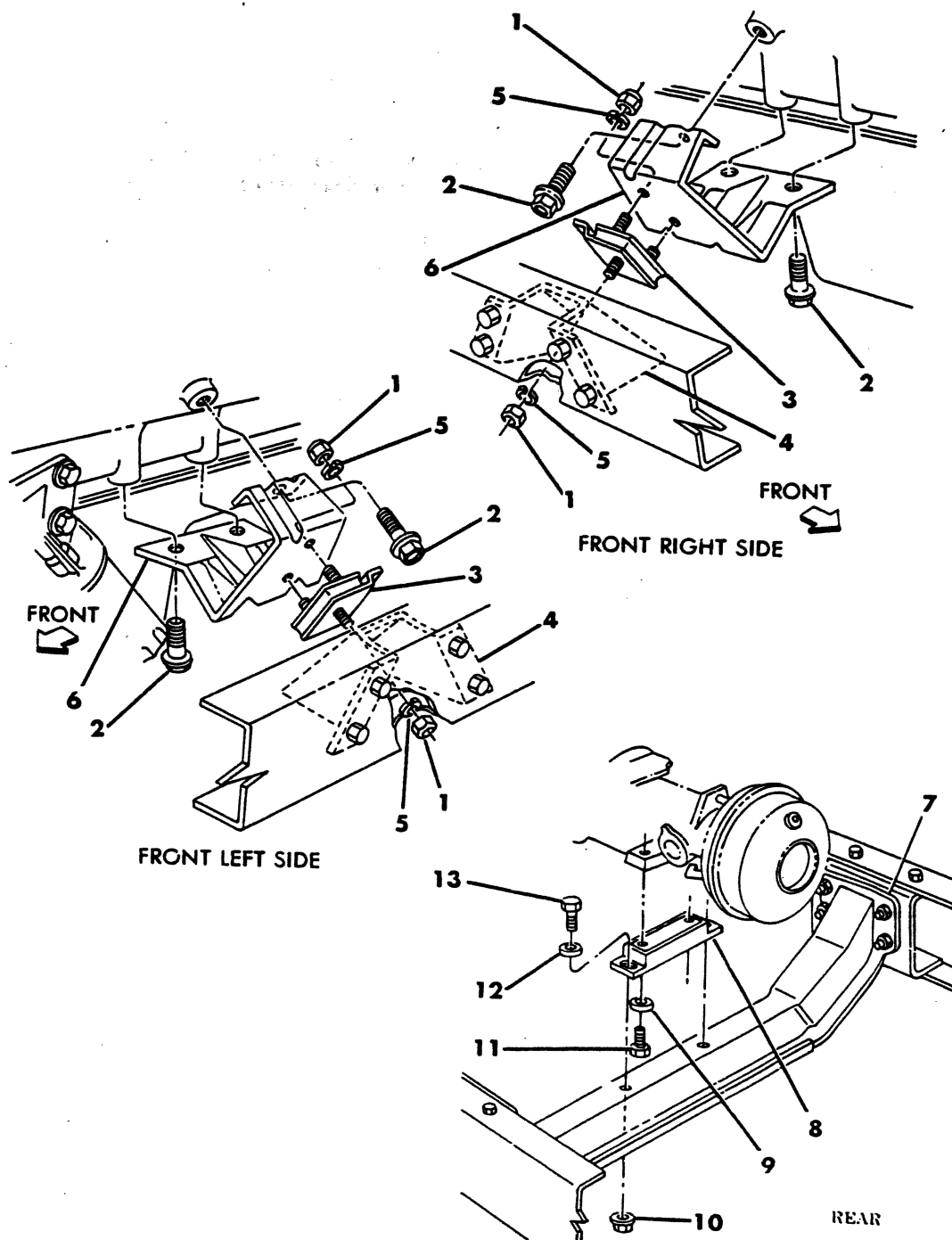
# = New Part Number

Printed in U.S.A.

June, 1982

8309 940

## ENGINE MOUNTINGS 446 ENGINE M 4,5,6



| ITEM                    | PART NUMBER | QTY | MODEL  | DESCRIPTION                         |
|-------------------------|-------------|-----|--------|-------------------------------------|
| <b>ENGINE MOUNTINGS</b> |             |     |        |                                     |
| <b>446 ENGINE</b>       |             |     |        |                                     |
| <b>M 4,5,6</b>          |             |     |        |                                     |
| 1                       | 152 348     | 4   |        | NUT                                 |
| 2                       | 6024 043    | 6   |        | SCREW                               |
| 3                       | 4088 033    | 2   |        | INSULATOR, Eng. Front Support       |
| 4                       |             |     |        | BRACKET, Frame Eng. Front Support   |
|                         | 4167 784    | 1   |        | Right                               |
|                         | 4167 785    | 1   |        | Left                                |
| 5                       | 2128 774    | 4   |        | WASHER                              |
| 6                       | 4116 278    | 2   |        | BRACKET, Front Support              |
| 7                       |             |     |        | BRACKET, Rear Support Crossmember   |
|                         |             |     |        | w/ 159" WB.                         |
|                         | 4117 206    | 1   | M4     | Right                               |
|                         | 4117 207    | 1   | M4     | Left                                |
|                         |             |     |        | w/ 137" WB.                         |
|                         | 4164 064    | 1   | M3,4   | Right                               |
|                         | 4164 065    | 1   | M3,4   | Left                                |
| 8                       | 3637 751    | 1   | M3     | INSULATOR                           |
|                         | 3632 984    | 1   | M4,5,6 |                                     |
| 9                       | 6025 705    | 2   |        | WASHER                              |
| 10                      | 6025 020    | 2   |        | NUT                                 |
| 11                      |             |     |        | SCREW, 7/16 - 14 x 1 (not serviced) |
| 12                      |             |     |        | WASHER, (not serviced)              |
| 13                      | 9416 171    | 2   |        | BOLT                                |

|               |                                       |                                     |                                     |
|---------------|---------------------------------------|-------------------------------------|-------------------------------------|
| <b>LIGHT</b>  | A = All Sport Utility (Ramcharger).   | B = All Compact Models.             | D = Conventional Cab.               |
| <b>DUTY</b>   | AD = 2 Wheel Drive Only (Ramcharger). | CB-MB = Compact Front Section Only. | W = Conventional Cab 4 Wheel Drive. |
| <b>CODES:</b> | AW = 4 Wheel Drive Only (Ramcharger). | P = Forward Control Chassis.        | M = Motor Home.                     |

**MEDIUM-HEAVY CODES:** XNT = Low Cab Forward. D = Conventional Cab. S = School Bus. W = 4-Wheel Drive.

AR=Use as Required

# = New Part Number

Printed in U.S.A.

June, 1982

