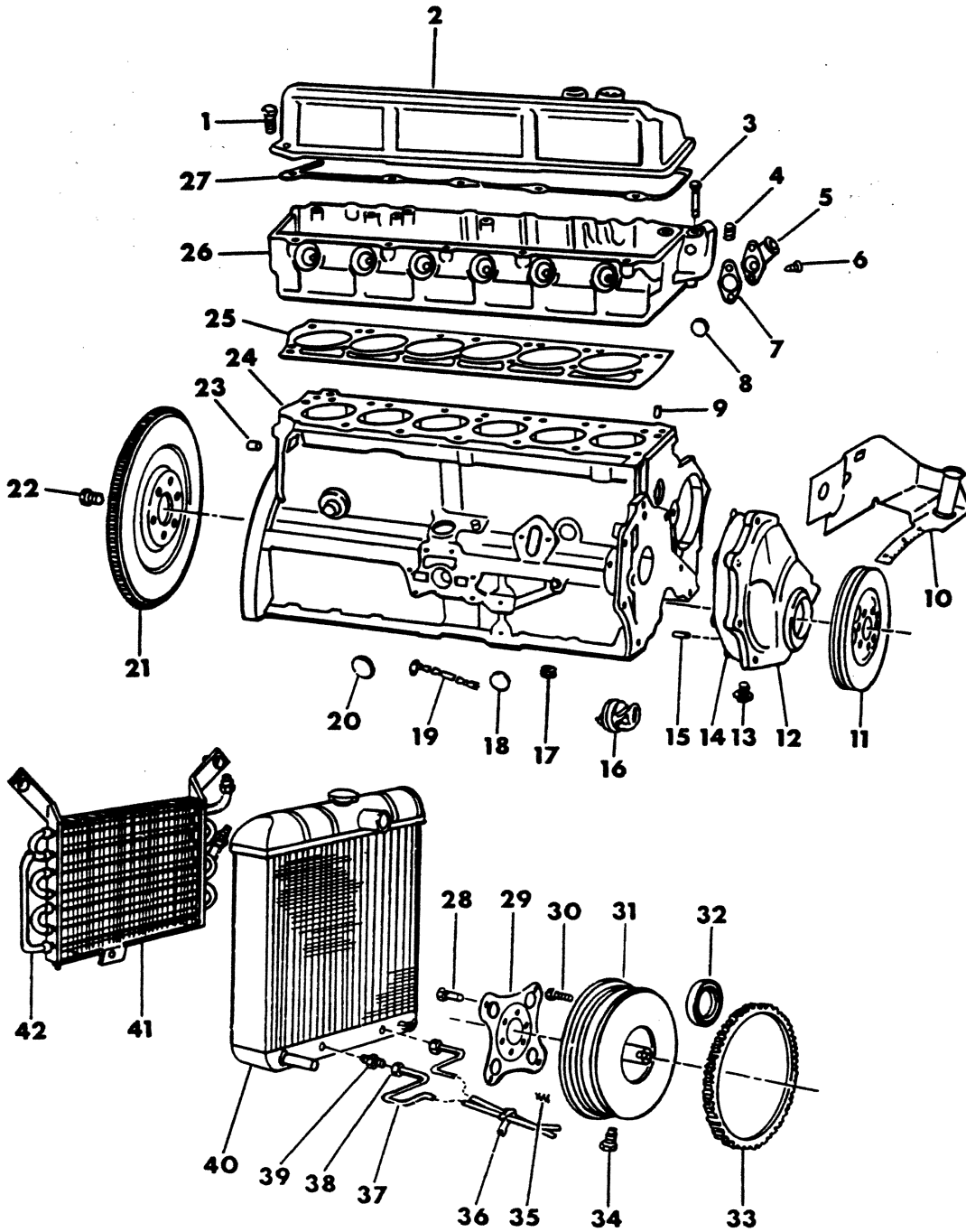


GROUP 9B - ENGINE, SIX CYLINDER

CAMSHAFT & VALVE MECHANISM (MMC DIESEL)	Fig. 9B-800
CAMSHAFT, VALVES, ROCKER, CHAIN, SPROCKET (6 CYLINDER ENGINE)	Fig. 9B-225
CONTROL,ENGINE (MMC DIESEL)	Fig. 9B-2400
CONTROL, IDLE (MMC DIESEL)	Fig. 9B-2700
COOLER LINES,TRANS.OIL (MMC DIESEL)	Fig. 9B-2800
COOLING SYSTEM (MMC DIESEL)	Fig. 9B-1300
CRANKCASE & ENGINE MTG. (MMC DIESEL)	Fig. 9B-500
CRANKSHAFT-PISTON-CONNECTING ROD & BEARINGS (MMC DIESEL)	Fig. 9B-700
ENGINE - (6 CYLINDER)	Fig. 9B-100
ENGINE MOUNTINGS - 6 CYLINDER B-CB-MB	Fig. 9B-300
ENGINE MOUNTINGS - 6 CYLINDER A-D-W MODEL	Fig. 9B-325
FILTER FUEL (MMC DIESEL)	Fig. 9B-1600
FLYWHEEL & HOUSING (MMC DIESEL)	Fig. 9B-1000
FUEL SYSTEM (MMC DIESEL)	Fig. 9B-2500
HEAD,CYLINDER & COVER (MMC DIESEL)	Fig. 9B-600
HEATER,ENGINE BLOCK (MMC DIESEL)	Fig. 9B-3000
INTAKE AND EXHAUST MANIFOLD (6 CYLINDER ENGINE)	Fig. 9B-250
KIT,GASKET (MMC DIESEL)	Fig. 9B-550
MANIFOLD,INTAKE & EXHAUST (MMC DIESEL)	Fig. 9B-900
MOUNTING,ENGINE FRONT (MMC DIESEL)	Fig. 9B-2900
NOZZLE (MMC DIESEL)	Fig. 9B-1700
PISTONS, CRANKSHAFT, CONNECTING RODS (6 CYLINDER ENGINE)	Fig. 9B-200
PUMP WATER (MMC DIESEL)	Fig. 9B-1200
STARTER (MMC DIESEL)	Fig. 9B-2200
TIMING GEAR & CASE (MMC DIESEL)	Fig. 9B-1100
VALVE,HEAT BOOST VALVE & CONTROL	Fig. 9B-2600

8356 100C

ENGINE - (6 CYLINDER)



ITEM	PART NUMBER	QTY	MODEL	DESCRIPTION
ENGINE - (6 CYLINDER)				
GASKET SET				
	3683 827	1		Upper 1978-79-80
	4267 187	1		1981
	4106 048	1		Lower
1	6022 202	8		SCREW w/WASHER, Cylinder Head Cover
2				COVER, Cylinder Head
	4071 077	1		1978-79-80
	4095 780	1		1981
3	1947 687	14		BOLT, Cylinder Head 7/16 x 4 3/8
4	1859 127	1		PLUG, Cylinder Head Heater Hole
5	2121 524	1		ELBOW, Cylinder Head Water Outlet
6	180 124	2		BOLT, Water Outlet Elbow
7	1947 671	1		GASKET, Water Outlet Elbow
8	6029 497	2		PLUG, Cylinder Head Cup
9	141 195	2		DOWEL, Block to Cylinder Head
10	4100 777	1		INDICATOR, Timing
11				DAMPER, Vibration
	4095 525	1		10" Clutch 1978
	4095 220	1		Auto. Trans. 1978
	4173 184	1		10" Clutch 1979-80-81
	4095 220	1		11" Clutch
	4095 527	1		Auto. Trans.
	4105 203	1	B1,2-D-W	SHIELD, Vibration Damper Dust w/10" & 11" Clutch w/o Air Cond. 1981 (not shown)
12				COVER, Chain Case w/Timing Indicator
	4095 546	1		1978
	4100 422	1		1979-80-81
13	181 086	6		SCREW, Chain Case Cover
	6024 246	1		5/16 x 3/4
14	1947 554	1		GASKET, Chain Case Cover
15	141 195	2		DOWEL, Block to Chain Case Cover
16	3755 677	1		HEATER, Engine Block
17	6028 668	1		PLUG, Cylinder Block Oil Line
18	2406 356	5		PLUG, Cylinder Block Core Hole
19	3614 282	1		CORD, Engine Heater
20	6027 513	1		"O" RING, Engine Heater
21				FLYWHEEL
	2863 402	1		w/Ring Gear 10" Clutch
	2863 475	1		11" Clutch
	2952 847	1	P3	11" Clutch 1978
22	6030 536	6		BOLT, Flywheel
23				DOWEL, Cylinder Block to Clutch Housing or Torque Converter
	1122 532	2		STD.
	1736 347	2		.007 Over Center
	1736 348	2		.014 Over Center
	1736 353	2		.021 Over Center
24				ENGINE
	4088 207	1		As Shipped w/11" Clutch 1979 Short

LIGHT	A = All Sport Utility (Ramcharger).	B = All Compact Models.	D = Conventional Cab.
DUTY	AD = 2 Wheel Drive Only (Ramcharger).	CB-MB = Compact Front Section Only.	W = Conventional Cab 4 Wheel Drive.
CODES:	AW = 4 Wheel Drive Only (Ramcharger).	P = Forward Control Chassis.	M = Motor Home.

MEDIUM-HEAVY CODES: XNT = Low Cab Forward. D = Conventional Cab. S = School Bus. W = 4-Wheel Drive.

AR=Use as Required

= New Part Number

Printed in U.S.A.

June, 1982

1978-81 LIGHT DUTY TRUCK PARTS CATALOG

ENGINE, SIX CYLINDER

ITEM	PART NUMBER	QTY	MODEL	DESCRIPTION
ENGINE - (6 CYLINDER)				
	4100 697	1		Std. Compression 1978-79
	4201 308	1		1980
	4227 917	1		1981
	4100 698	1		Low Compression 1978-79
	4071 652	1		Fitted Case 1978
	4100 699	1		1979
	4201 311	1		1980
	4227 893	1		1981
25				GASKET, Cylinder Head
	2843 182	1		1978-79-80
	4201 149	1		1981
26				HEAD, Cylinder
	3698 448	1		1978
	3830 329	1		1978 w/o Air Pump
	4104 363	1		1979-80
	4095 776	1		1981
27				GASKET, Cylinder Head Cover
	2899 250	1		1978-79-80
	4095 784	1		1981
28	1949 765	4		SCREW, Drive Plate to Torque Converter
29	4058 428	1		PLATE, Torque Converter Drive
30	1949 424	6		SCREW, Drive Plate to Crankshaft
31				TORQUE CONVERTER
	4106 573	1		w/Torque Converter Stamped 506, 507 or 511
	4186 053	1		w/Torque Converter Stamped 849
	4186 876	1		w/Torque Converter Stamped 404, 405, 860 or 861
	4106 563	1		w/Torque Converter Stamped 290, 379 or 380
	4106 564	1		w/Torque Converter Stamped 385 or 386
32	3515 137	1		SEAL, Torque Converter Hub
33				RING GEAR
	2121 196	1		w/10" Clutch
	2843 214	1		w/11" Clutch
	3515 203	1		Torque Converter w/A727 Trans.
	2121 196	1		w/A904 Trans.
34				PLUG, Torque Converter Drain (not serviced)
35	1942 187	8		SPRING, Torque Converter Overrunning Clutch
36	3577 170	1		BRACKET, Trans. Oil Cooler Tube Mtg. 1978-79
	4112 482	1		1980-81
	4041 703	1		BRACKET, Oil Cooler Tube to Engine - Left Front 1980
	4286 064	1		1981
37	1843 253	AR		TUBING, Steel (serv. in 25 ft. roll)
38	1941 667	AR		NUT
39	118 749	AR		ADAPTER, Trans. Oil Cooler Tube
	6032 034	1	B1,2,3	TEE, Trans. Oil Cooler Temp. Sensor 1981
40				COOLER, Trans. Oil - Lower
	2998 996	1		w/Increased Cooling or Air Conditioning 1978-79
	4140 383	1		1980-81
	4016 626	1		w/o Increased Cooling or Air Conditioning 1978-79
	4140 380	1		1980-81

LIGHT DUTY CODES: A = All Sport Utility (Ramcharger). B = All Compact Models. D = Conventional Cab.
 AD = 2 Wheel Drive Only (Ramcharger). CB-MB = Compact Front Section Only. W = Conventional Cab 4 Wheel Drive.
 AW = 4 Wheel Drive Only (Ramcharger). P = Forward Control Chassis. M = Motor Home.

MEDIUM-HEAVY CODES: XNT = Low Cab Forward. D = Conventional Cab. S = School Bus. W = 4-Wheel Drive.

ITEM	PART NUMBER	QTY	MODEL	DESCRIPTION
	4140 382	1	B1,2,3-CB3	w/Max. Cooling 1980-81
	6032 034	1	B1,2,3	TEE, Trans. Oil Cooler Temp. Sensor 1981
41	4086 460	1		COOLER, Trans. Auxiliary Oil 1978
42	3893 198	1		TUBE, Trans. Auxiliary Oil Cooler 1978

ENGINE - (6 CYLINDER)

LIGHT	A = All Sport Utility (Ramcharger).	B = All Compact Models.	D = Conventional Cab.
DUTY	AD = 2 Wheel Drive Only (Ramcharger).	CB-MB = Compact Front Section Only.	W = Conventional Cab 4 Wheel Drive.
CODES:	AW = 4 Wheel Drive Only (Ramcharger).	P = Forward Control Chassis.	M = Motor Home.
MEDIUM-HEAVY CODES:	XNT = Low Cab Forward.	D = Conventional Cab.	S = School Bus. W = 4-Wheel Drive.

AR=Use as Required

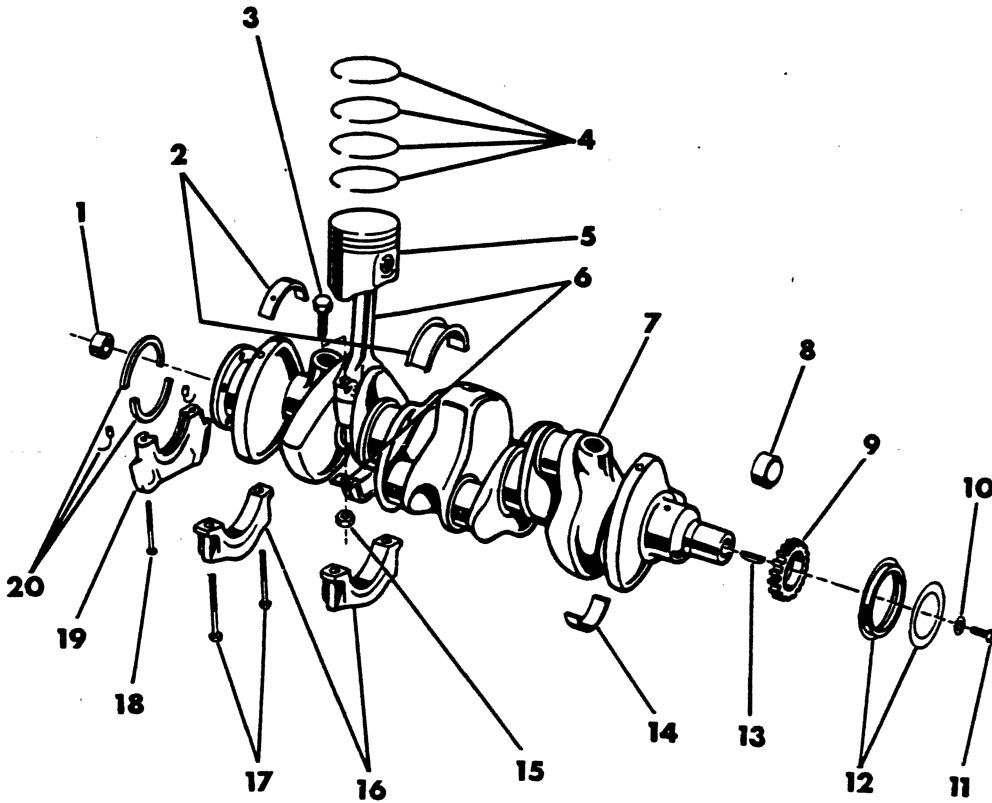
= New Part Number

Printed in U.S.A.

June, 1982

PISTONS, CRANKSHAFT, CONNECTING RODS
(6 CYLINDER ENGINE)

8309 200A



ITEM	PART NUMBER	QTY	MODEL	DESCRIPTION
PISTONS, CRANKSHAFT, CONNECTING RODS (6 CYLINDER ENGINE)				
1	5 3298	1		BUSHING, Crankshaft Trans. Pilot
2				BEARING PKG., Crankshaft # 1, 2, 4
	4049 242	3		STD.
	4049 243	3		.001 u/s
	4049 244	3		.002 u/s
	4049 245	3		.003 u/s
	4049 246	3		.010 u/s
	4049 247	3		.011 u/s
	4049 248	3		.012 u/s
				# 3
	4049 249	3		STD.
	4049 250	3		.001 u/s
	4049 251	3		.002 u/s
	4049 252	3		.003 u/s
	4049 253	3		.010 u/s
	4049 254	3		.011 u/s
	4049 255	3		.012 u/s
3	3830 614	12		BOLT, Connecting Rod Cap
4				RING SET, Piston (1 Piston)
	4131 214	6		STD. to .009 o/s
	4131 215	6		.020 to .029 o/s
				Set (All Pistons)
	4131 212	1		STD. to .009 o/s
	4131 213	1		.020 to .029 o/s
5				PISTON w/PIN
	2084 384	6		STD.
	2084 385	6		.005 o/s
	2084 386	6		.020 o/s
				LOW COMPRESSION
	2084 388	6		Std.
	2084 390	6		.020 o/s
6	4041 994	6		ROD, Connecting
7				CRANKSHAFT
	3751 036	1		1978
	4100 646	1		10" Clutch and Auto. Trans. 1979-80-81
	3751 036	1		11" Clutch 1979-80-81
8	3751 037	1		PLUG, Crankshaft
9	2128 912	1		SPROCKET, Crankshaft
10	1855 561	1		WASHER, Crankshaft Screw
11	6025 547	1		SCREW, Crankshaft
12	3830 108	1		OIL SEAL, Chain Case Cover
13	6029 411	1		KEY, Crankshaft Sprocket
14				BEARING PKG., Connecting Rod
	4049 256	6		STD.
	4049 257	6		.001 u/s
	4049 258	6		.002 u/s
	4049 259	6		.003 u/s
	4049 260	6		.010 u/s
	4049 261	6		.012 u/s

LIGHT A = All Sport Utility (Ramcharger).

B = All Compact Models.

D = Conventional Cab.

DUTY AD = 2 Wheel Drive Only (Ramcharger).

CB-MB = Compact Front Section Only.

W = Conventional Cab 4 Wheel Drive.

CODES: AW = 4 Wheel Drive Only (Ramcharger).

P = Forward Control Chassis.

M = Motor Home.

MEDIUM-HEAVY CODES: XNT = Low Cab Forward. D = Conventional Cab. S = School Bus. W = 4-Wheel Drive.

AR = Use as Required

= New Part Number

Printed in U.S.A.

June, 1982

1978-81 LIGHT DUTY TRUCK PARTS CATALOG

ENGINE, SIX CYLINDER

ITEM	PART NUMBER	QTY	MODEL	DESCRIPTION
PISTONS, CRANKSHAFT, CONNECTING RODS (6 CYLINDER ENGINE)				
15	1737 695	12		NUT, Rod Cap Bolt
16				CAP, Crankshaft Bearing
	4027 425	1		# 1
	4027 426	1		# 2
	4027 427	1		# 3
	4027 428	1		# 4
17	1618 695	8		SCREW, Crankshaft Bearing Cap
18	9418 004	2		SCREW, Crankshaft Bearing Seal
19	1947 557	1		RETAINER, Crankshaft Bearing Oil Seal
20	4049 266	1		OIL SEAL PKG., Crankshaft Rear Bearing

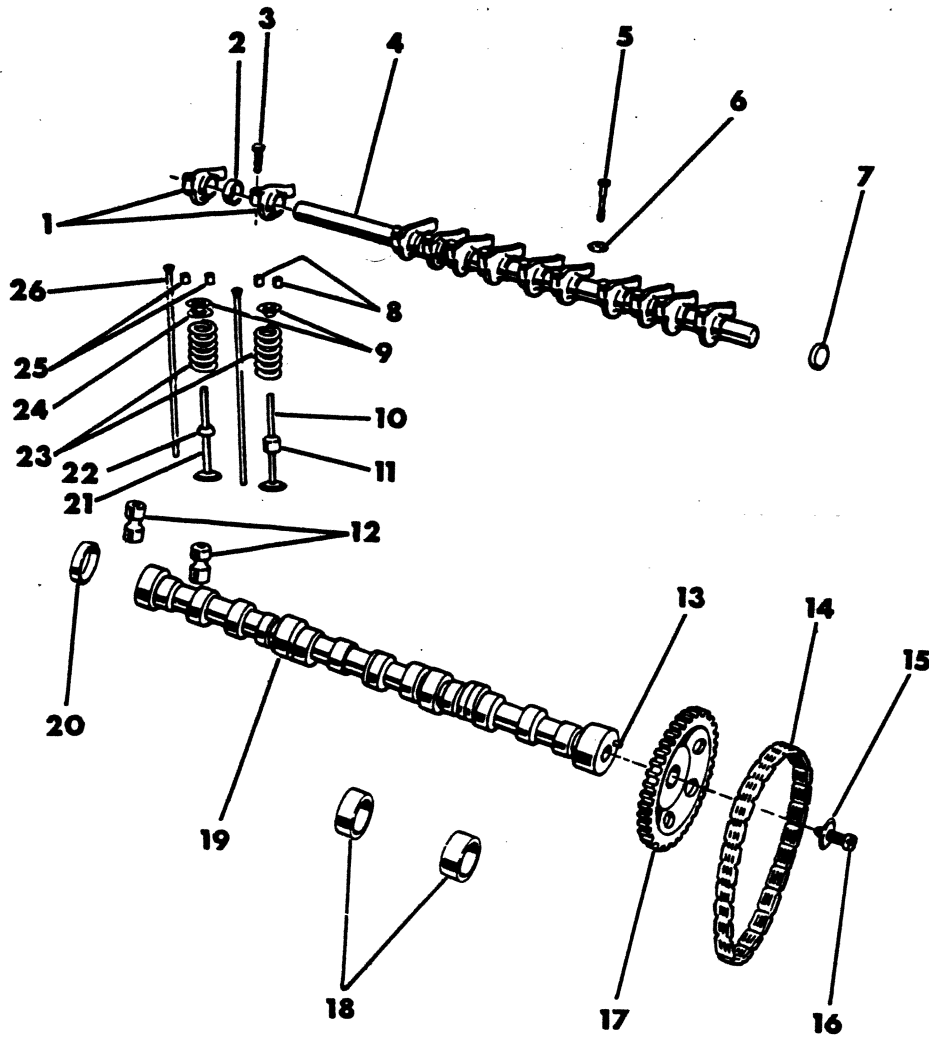
LIGHT	A = All Sport Utility (Ramcharger).	B = All Compact Models.	D = Conventional Cab.
DUTY	AD = 2 Wheel Drive Only (Ramcharger).	CB-MB = Compact Front Section Only.	W = Conventional Cab 4 Wheel Drive.
CODES:	AW = 4 Wheel Drive Only (Ramcharger).	P = Forward Control Chassis.	M = Motor Home.

MEDIUM-HEAVY CODES: XNT = Low Cab Forward. D = Conventional Cab. S = School Bus. W = 4-Wheel Drive.

AR=Use as Required # = New Part Number Printed in U.S.A. June, 1982

8309 225

CAMSHAFT, VALVES, ROCKER, CHAIN, SPROCKET
(6 CYLINDER ENGINE)



ITEM	PART NUMBER	QTY	MODEL	DESCRIPTION
CAMSHAFT, VALVES, ROCKER, CHAIN, SPROCKET (6 CYLINDER ENGINE)				
1				ROCKER, Valve
	1947 594	1		1978-79-80
	4173 909	12		1981
2	2120 694	6		SPACER, Valve Rocker
3	1855 238	12		SCREW, Rocker Adjusting 1978-79-80
4	1947 614	1		SHAFT, Rocker 1978-79-80
	4100 397	1		1981
5	3870 322	1		SCREW, Rocker Shaft Retainer 5/16 x 3/4. Also 6 of 3/8 x 1 3/4 (not serviced)
6	1947 616	6		RETAINER, Rocker Shaft End and Intermediate
	1947 617	1		Center
7	1324 268	2		PLUG, Rocker Shaft
8				LOCK, Exhaust Valve Spring
	381 875	12		225-2 Eng. 1978
	1614 666	12		225-1 Eng.
9				RETAINER, Valve Spring
	1551 002	6		225-2 Eng. 1978
	3751 659	6		
	2402 045	12		225-1 Eng.
10				VALVE, Exhaust
	3698 590	6		225-1 STD.
	3698 591	6		.005 o/s
	3698 592	6		.015 o/s
	3698 593	6		.030 o/s
	2202 961	6		225-2 STD. 1978
	2202 962	6		.005 o/s 1978
	2202 963	6		.015 o/s 1978
	2202 964	6		.030 o/s 1978
11	4071 006	6		SHIELD, Exhaust Valve Stem Oil
12				TAPPET, Valve
	4186 155	12		STD. 1978-79-80
	4186 156	12		.001 o/s 1978-79-80
	4186 157	12		.008 o/s 1978-79-80
	4186 158	12		.030 o/s 1978-79-80
	4106 028	12		Std. 1981
13	141 195	1		DOWEL, Camshaft Sprocket
14	3514 866	1		CHAIN, Timing
15				WASHER, Sprocket Retainer Screw (not serviced)
16	9418 275	1		SCREW, Sprocket Retainer
17	2806 945	1		SPROCKET, Camshaft
18				BEARING, Camshaft
	3830 601	1		# 1 STD. 1978
	1821 772	1		# 2 STD. 1978
	2121 726	1		# 3 STD. 1978
	2121 727	1		# 4 STD. 1978
	3830 602	1		# 1 .010 o/s 1978
	2205 512	1		# 2 .010 o/s 1978
	2205 514	1		# 3 .010 o/s 1978
	2205 516	1		# 4 .010 o/s 1978

LIGHT A = All Sport Utility (Ramcharger).

B = All Compact Models.

D = Conventional Cab.

DUTY AD = 2 Wheel Drive Only (Ramcharger).

CB-MB = Compact Front Section Only.

W = Conventional Cab 4 Wheel Drive.

CODES: AW = 4 Wheel Drive Only (Ramcharger).

P = Forward Control Chassis.

M = Motor Home.

MEDIUM-HEAVY CODES: XNT = Low Cab Forward. D = Conventional Cab. S = School Bus. W = 4-Wheel Drive.

AR=Use as Required

= New Part Number

Printed in U.S.A.

June, 1982

1978-81 LIGHT DUTY TRUCK PARTS CATALOG

ENGINE, SIX CYLINDER

ITEM	PART NUMBER	QTY	MODEL	DESCRIPTION
CAMSHAFT, VALVES, ROCKER, CHAIN, SPROCKET (6 CYLINDER ENGINE)				
	4100 754	1		# 1 STD. 1979-80-81
	4100 755	1		# 2 STD. 1979-80-81
	4100 756	1		# 3 STD. 1979-80-81
	2121 727	1		# 4 STD. 1979-80-81
	4100 762	1		# 1 .010 o/s 1979-80
	4100 763	1		# 2 .010 o/s 1979
	4100 764	1		# 3 .010 o/s 1979
	2205 516	1		# 4 .010 o/s 1979
19	CAMSHAFT			
	3512 639	1		1978
	4104 437	1		1979
	3512 639	1		1980
	4105 275	1		1981
20	2402 905	1		PLUG, Camshaft Rear Bearing
21	VALVE, Intake			
	1947 623	6		STD.
	2121 578	6		.005 o/s
	2121 579	6		.015 o/s
	2121 580	6		.030 o/s
22	4095 543	6		SHIELD, Intake Valve Stem Oil
23	SPRING			
	1739 534	6		Intake Valve 225-2 Eng. 1978
	2899 525	6		Exhaust Valve 225-2 Eng. 1978
	1739 534	12		Intake and Exhaust Valve
24	1859 144	12		SPACER, Valve Spring
25	381 875	12		LOCK, Intake Valve Spring
26	ROD, Valve Push			
	2120 514	12		1978-79-80
	4173 482	12		1981

LIGHT DUTY CODES:
 A = All Sport Utility (Ramcharger). B = All Compact Models. D = Conventional Cab.
 AD = 2 Wheel Drive Only (Ramcharger). CB-MB = Compact Front Section Only. W = Conventional Cab 4 Wheel Drive.
 CODES: AW = 4 Wheel Drive Only (Ramcharger). P = Forward Control Chassis. M = Motor Home.

MEDIUM-HEAVY CODES: XNT = Low Cab Forward. D = Conventional Cab. S = School Bus. W = 4-Wheel Drive.

AR=Use as Required

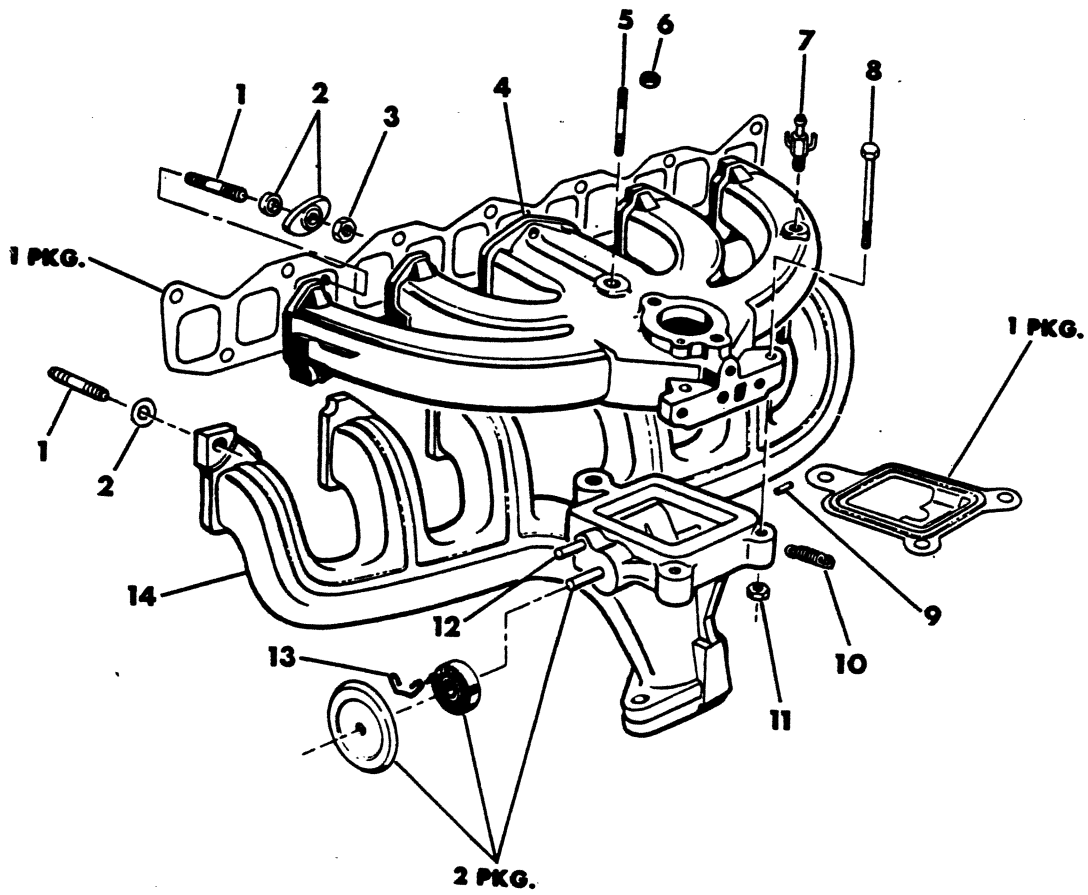
#=New Part Number

Printed in U.S.A.

June, 1982

INTAKE AND EXHAUST MANIFOLD
(6 CYLINDER ENGINE)

8309 250



ITEM	PART NUMBER	QTY	MODEL	DESCRIPTION
INTAKE AND EXHAUST MANIFOLD (6 CYLINDER ENGINE)				
1 PKG.				PKG., Intake and Exhaust Manifold Gasket
	4094 877	1		1978
	4186 180	1		1979-80-81
2 PKG.	3420 047	1		PKG., Heat Control Valve
1				STUD
	6030 209	1		Intake Manifold
	6030 209	2		Exhaust Manifold
	6030 209	10		Intake and Exhaust Manifold
	6024 380	2		Exhaust Manifold Outlet
2				WASHER
	2121 223	1		Intake Manifold Stud
	3751 837	2		Exhaust Manifold Stud
	3751 636	10		Intake and Exhaust Manifold Stud
3				NUT
	115 729	1		Intake Manifold Stud
	6030 210	2		Exhaust Manifold Stud
	115 729	10		Intake and Exhaust Manifold Stud
4				MANIFOLD, Intake
	4104 579	1		1 Bbl.
	4104 594	1		2 Bbl.
5	152 568	1		STUD, Intake to Exhaust Manifold
6	6025 020	1		NUT w/WASHER, Intake to Exhaust Manifold Stud
7				CONNECTOR, (Refer to group 25)
8	6030 003	2		BOLT, Intake to Exhaust Manifold 1978
	6031 330	2		1979-80-81
9	1639 597	1		PIN, Heat Control Valve Shaft spring
10	3462 514	1		SPRING, Heat Control Valve Shaft
11	6025 020	1		NUT, Intake to Exhaust Manifold Bolt
12	141 162	1		PIN, Heat Control Valve Stop
13	2946 107	1		STOP, Heat Control Valve
14	3744 827	1		MANIFOLD, Exhaust 1978-79
	4186 239	1		1980-81

LIGHT DUTY CODES: A = All Sport Utility (Ramcharger). B = All Compact Models. D = Conventional Cab.
AD = 2 Wheel Drive Only (Ramcharger). CB-MB = Compact Front Section Only. W = Conventional Cab 4 Wheel Drive.
AW = 4 Wheel Drive Only (Ramcharger). P = Forward Control Chassis. M = Motor Home.

MEDIUM-HEAVY CODES: XNT = Low Cab Forward. D = Conventional Cab. S = School Bus. W = 4-Wheel Drive.

AR=Use as Required

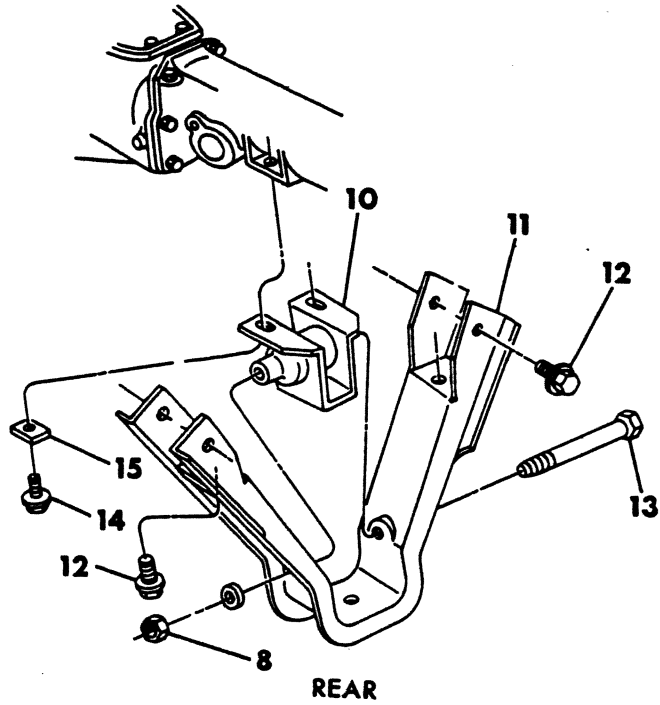
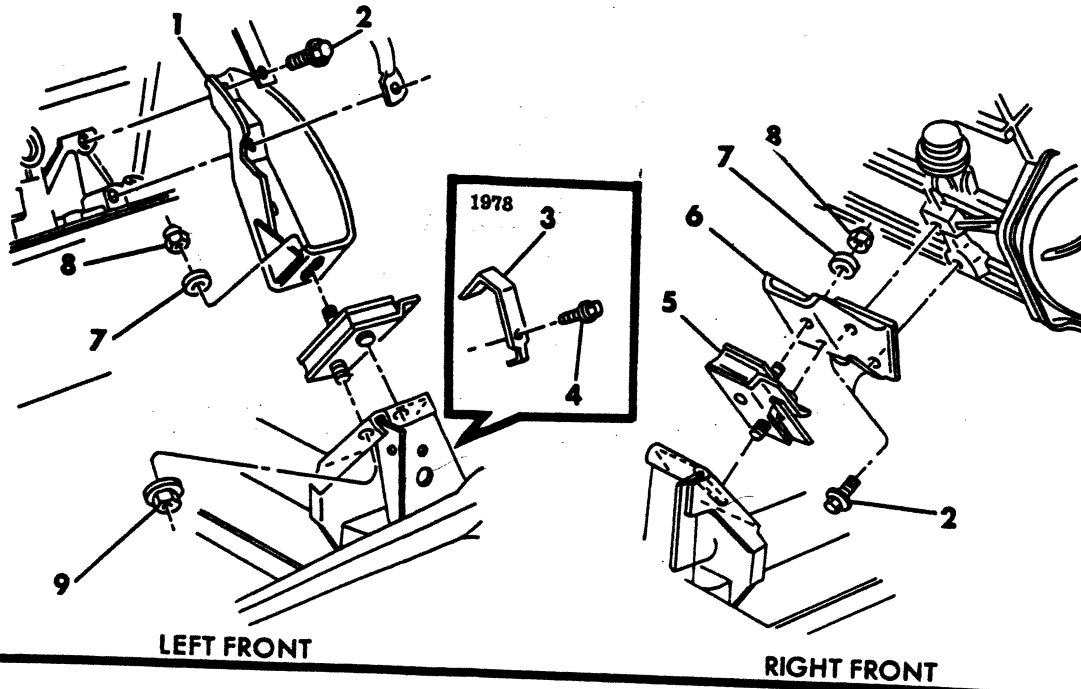
=New Part Number

Printed in U.S.A.

June, 1982

8356 300A

ENGINE MOUNTINGS - 6 CYLINDER
B-CB-MB

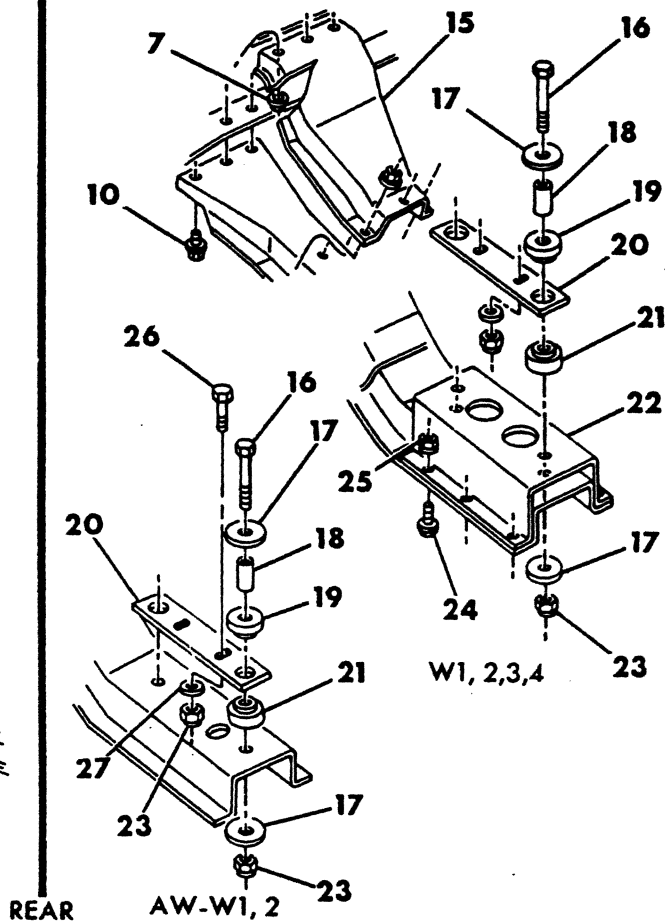
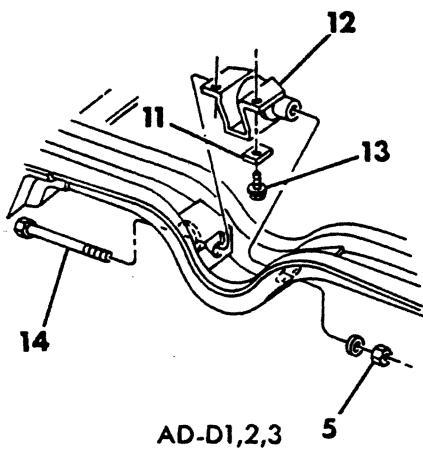
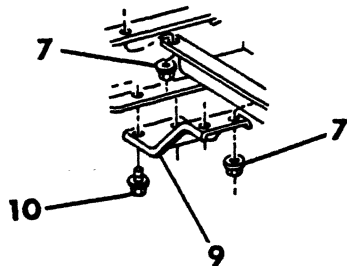
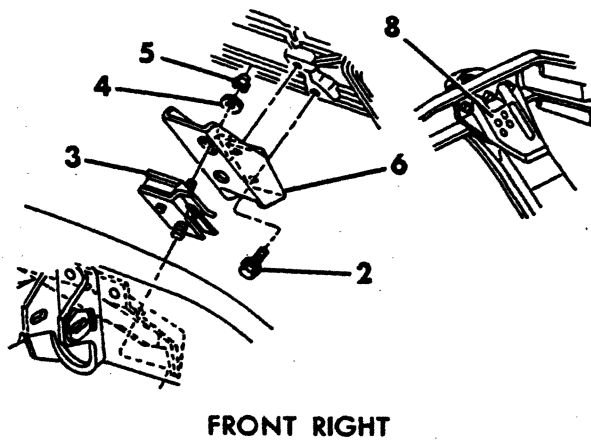
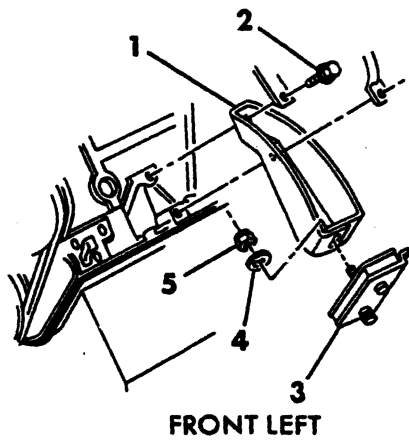


ITEM	PART NUMBER	QTY	MODEL	DESCRIPTION
ENGINE MOUNTINGS - 6 CYLINDER B-CB-MB				
1	3496 599	1		BRACKET, Eng. Front Support - Left
2		4		SCREW, 7/16 - 14 x 1.25 - 1978 (not serviced)
	6025 677	4		7/16 - 14 x 1.38 - 1979-80-81
3	3827 147	1		STRAP 1978
4				SCREW, 5/16 - 18 (not serviced)
5				INSULATOR, Eng. Front Support
	3496 819	2		1978
	4116 442	2		1979-80-81
6				BRACKET, Eng. Front Support - Right
	3641 868	1		1978
	3897 270	1		1979-80-81
7	2128 774	2		WASHER
8	152 348	2		NUT
9	6025 022	2		NUT
10	4032 295	1		INSULATOR, Eng. Rear Support
11	2955 694	1		SUPPORT, Eng. Rear
12	9416 171	6		SCREW
13	6028 237	1		BOLT, 1/2 - 13 x 5.12
14	6029 770	2		SCREW, 7/16 - 14 x 1.25
15	3410 700	2		SPACER, Eng. Rear Sup. Insul. Brkt. Screw

LIGHT	A = All Sport Utility (Ramcharger).	B = All Compact Models.	D = Conventional Cab.
DUTY	AD = 2 Wheel Drive Only (Ramcharger).	CB-MB = Compact Front Section Only.	W = Conventional Cab 4 Wheel Drive.
CODES:	AW = 4 Wheel Drive Only (Ramcharger).	P = Forward Control Chassis.	M = Motor Home.
MEDIUM-HEAVY CODES: XNT = Low Cab Forward. D = Conventional Cab. S = School Bus. W = 4-Wheel Drive.			
AR = Use as Required	# = New Part Number	Printed in U.S.A.	June, 1982

8356 325

ENGINE MOUNTINGS - 6 CYLINDER A-D-W MODEL



ITEM	PART NUMBER	QTY	MODEL	DESCRIPTION
ENGINE MOUNTINGS - 6 CYLINDER A-D-W MODEL				
1	3496 599	1		BRACKET, Eng. Front Sup. - Left
2		4		SCREW, 7/16 - 14 x 1.25 - 1978 (not serviced)
	6025 677	4		7/16 - 14 x 1.38 - 1979-80-81
3				INSULATOR, Eng. Front Support
	3496 819	2	AD-D1,2,3	1978
	3632 998	2	AW-W1,2,3	1978
	4116 442	2	AD-D1,2,3	1979-80-81
	4088 033	2	AW-W1,2,3	1979-80-81
	3637 939	2	RD1,2,3	1979-80
	4037 692	2	P3	Insulator
4	2128 774	2		WASHER
5	152 348	2		WASHER
6				BRACKET, Eng. Front Support - Right
	3641 868	1	AD-D1,2,3	
	3897 270	1	AW-W1,2,3	
	3638 105	1	RD1,2,3	
7		AR		NUT, 7/16 - 4 (not serviced)
8				BRACKET, Frame Eng. Front Support
	3822 890	1	AD-D1,2,3	Right
	3822 891	1	AD-D1,2,3	Left
	2832 539	1	P3	
9				BRACE, Frame Eng. Rear Support Crossmember
	3822 893	2	AD1	w/6" Rail w/Heavy Duty Package
	3822 893	2	D1	w/115 & 131" W.B.
	3822 893	2	D2	w/131" W.B.
	4039 654	2	D1,3,4	w/7" Rail
	4039 654	2	D2	w/145 & 165" W.B.
10		AR		BOLT, 7/16 - 14 x 1.25 (not serviced)
11	3410 700	1		SPACER
12	3491 835	1		INSULATOR, Eng. Rear Support
13	6029 770	2		SCREW
14	6028 237	1		BOLT, 1/2 - 13 x 5.12
15				BRACE, Frame Eng. Rear Support Crossmember
	3823 355	1	AW-W1	w/6" Rail
	3823 355	1	W2	w/131" W.B.
	4039 653	2	W3,4	w/7" Rail
	4039 653	2	W1	w/133 & 149" W.B.
	4039 653	2	W2	w/149" W.B.
16	271 885	2		BOLT, 5/8 - 11 x 3.25
17				WASHER, Flat (not serviced)
18				SPACER (not serviced)
19	3820 921	2		INSULATOR, Eng. Rear Sup. Trans. - Upper
20	3820 924	1		PLATE
21	4106 710	2		INSULATOR, Eng. Rear Sup. Trans. - Lower
22	3821 225	1	W1,2,3,4	ADAPTER, Frame Eng. Rear Sup. Crossmember w/7" Rail w/133 & 149" W.B.
23	152 372	4		NUT
24		6		BOLT, 7/16 - 14 x 1.25 (not serviced)
25				NUT, 7/16 - 14 (not serviced)

LIGHT A = All Sport Utility (Ramcharger). B = All Compact Models. D = Conventional Cab.
DUTY AD = 2 Wheel Drive Only (Ramcharger). CB-MB = Compact Front Section Only. W = Conventional Cab 4 Wheel Drive.
CODES: AW = 4 Wheel Drive Only (Ramcharger). P = Forward Control Chassis. M = Motor Home.

MEDIUM-HEAVY CODES: XNT = Low Cab Forward. D = Conventional Cab. S = School Bus. W = 4-Wheel Drive.

AR=Use as Required

=New Part Number

Printed in U.S.A.

June, 1982

1978-81 LIGHT DUTY TRUCK PARTS CATALOG

ENGINE, SIX CYLINDER

ITEM	PART NUMBER	QTY	MODEL	DESCRIPTION
------	-------------	-----	-------	-------------

ENGINE MOUNTINGS - 6 CYLINDER A-D-W MODEL

26		2		BOLT, 5/8 - 11 x 2.50 (not serviced)
27	6028 778	2		WASHER

LIGHT	A = All Sport Utility (Ramcharger).	B = All Compact Models.	D = Conventional Cab.
DUTY	AD = 2 Wheel Drive Only (Ramcharger).	CB-MB = Compact Front Section Only.	W = Conventional Cab 4 Wheel Drive.
CODES:	AW = 4 Wheel Drive Only (Ramcharger).	P = Forward Control Chassis.	M = Motor Home.

MEDIUM-HEAVY CODES: XNT = Low Cab Forward. D = Conventional Cab. S = School Bus. W = 4-Wheel Drive.

AR=Use as Required

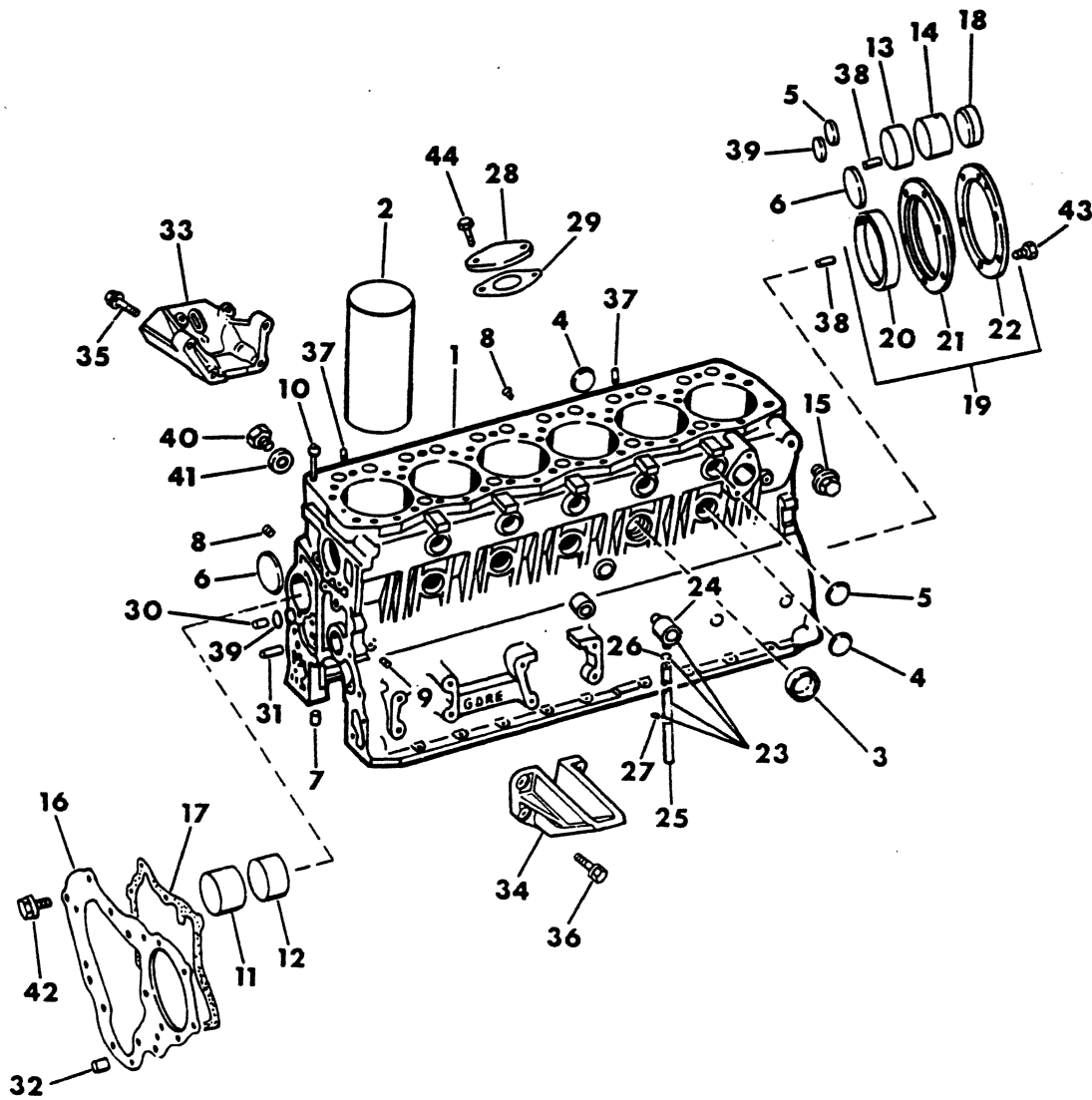
= New Part Number

Printed in U.S.A.

June, 1982

CRANKCASE & ENGINE MTG. (MMC DIESEL)

8356 500



ITEM	PART NUMBER	QTY	MODEL	DESCRIPTION
CRANKCASE & ENGINE MTG. (MMC DIESEL)				
1	ME00 7301	1		ENGINE, Short
	ME00 7309	1		KIT, Gasket
	4037 494	1		ENGINE, As Shipped
	ME00 7209	1		CRANKCASE
2	ME00 7132	6		SLEEVE - Std.
	ME00 7133	6		o/s
3		1		CAP, Sealing (not serviced)
4	MS66 6109	10		PLUG, Expansion
5	ME00 7117	6		PLUG, Expansion
6	MS66 6113	2		PLUG, Expansion
7	ME00 7040	4		PLUG
8	MH03 7135	5		PLUG, Taper
9	MH03 7237	2		PLUG, Taper
10	ME00 7174	1		PIPE,Oil
11	ME00 7134	1		BUSHING,Camshaft #1
12	ME00 7041	1		BUSHING,Camshaft #2
13	ME00 7043	1		BUSHING,Camshaft #3
14	ME00 7110	1		BUSHING,Camshaft #4
15	ME04 0252	1		HANGER,Rear
16	ME00 7047	1		PLATE,Frt.
17	ME00 7045	1		GASKET,Frt.Plate
18	ME00 0024	1		CAP,Sealing
19	ME00 7204	1		SEAL,Oil Pkg.
20	ME00 7205	1		SEAL,Oil
21	ME00 7048	1		SLEEVE,Oil Seal
22	ME00 7046	1		PLATE,Washer
23	ME00 7203	1		Cock,Drain Pkg.
24	ME03 1455	1		Cock,Water Drain
25	ME02 4205	1		PIPE,Drain
26	MS66 6040	1		CLAMP
27	MH02 1013	1		CLAMP
28	ME00 7302	1		COVER,Tachometer
30	MH00 7001	1		PIN,Dowel
31	MH00 7002	1		PIN
32	MH00 7001	1		PIN
33	ME00 7219	1		BRACKET,Mtg.Frt.Lt.
34	ME00 7220	1		BRACKET,Mtg.Frt.Rt.
35	MF30 0846	4		BOLT
36	MF30 0856	4		BOLT
37	MF47 2587	2		PIN,Spring
38	MF47 2446	2		PIN,Dowel
39	MF66 5505	2		PLUG,Expansion
40	MF66 5007	1		PLUG,Screw
41	MF66 0068	1		GASKET
42	MF24 0052	2		BOLT,w/Washer
43	MF24 0024	6		BOLT,w/Washer
44	MF10 0053	2		BOLT

LIGHT A = All Sport Utility (Ramcharger).

B = All Compact Models.

D = Conventional Cab.

DUTY AD = 2 Wheel Drive Only (Ramcharger).

CB-MB = Compact Front Section Only.

W = Conventional Cab 4 Wheel Drive.

CODES: AW = 4 Wheel Drive Only (Ramcharger).

P = Forward Control Chassis.

M = Motor Home.

MEDIUM-HEAVY CODES: XNT = Low Cab Forward. D = Conventional Cab. S = School Bus. W = 4-Wheel Drive.

AR=Use as Required

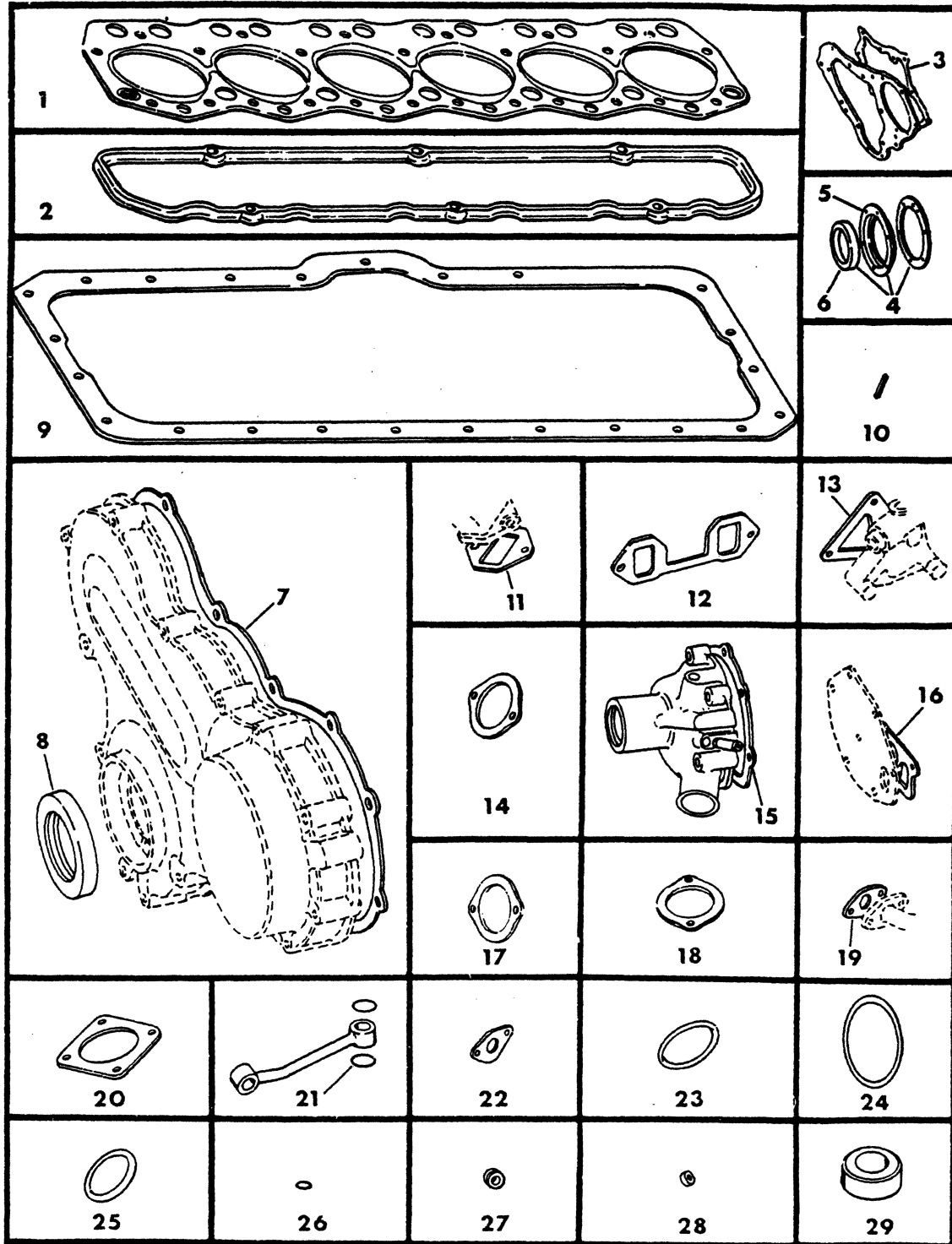
=New Part Number

Printed in U.S.A.

June, 1982

8356 550

KIT,GASKET (MMC DIESEL)



ITEM	PART NUMBER	QTY	MODEL	DESCRIPTION
KIT,GASKET (MMC DIESEL)				
	ME00 7309	1		KIT,GASKET
1	ME00 7183	1		GASKET,Cyl.Head
2	ME00 7197	1		GASKET,Rocker Case
3	ME00 7045	1		GASKET,Front Plate
4	ME00 7204	1		SEAL,Oil Assy.
5	ME00 7205	1		SEAL,Oil Rear
6	ME00 7048	1		SLEEVE,Oil Seal
7	ME00 7064	1		GASKET,Timing Gear Case
8	ME00 7062	1		SEAL,Oil Front
9	ME00 7217	1		GASKET,Oil Pan
10	ME00 7036	4		SEAL,Side
11	ME00 7073	6		GASKET,Inlet Manifold
12	ME00 7074	3		GASKET,Exh. Manifold
13	ME00 7079	1		GASKET,Relief Valve Case
14	ME00 7082	1		GASKET,Breather
15	ME00 7175	1		GASKET,Water Pump Case
16	ME00 7083	1		GASKET,Water Pump Assy.
17	ME00 7084	1		GASKET,Thermostat Case
18	ME00 7273	1		GASKET,Thermostat Cover
19	ME02 0663	1		GASKET,Oil Strainer
20	ME02 1976	1		GASKET,Inlet Coupler
21	MH03 5091	8		O-RING,Oil Pipe
22	ME00 7182	6		GASKET,Water Outlet Pipe
23	MF52 0030	6		O-RING,Fuel Control Motor Kit
24	MH03 5098	6		O-RING,Flange Plate
25	ME00 7085	1		O-RING,Flange Plate
26	MH03 5133	1		O-RING
27	ME00 7018	6		GASKET,Nozzle Tip
28	ME00 7017	6		GASKET,Glow Plug
29	ME00 7031	12		SEAL,Rubber

LIGHT	A = All Sport Utility (Ramcharger).	B = All Compact Models.	D = Conventional Cab.
DUTY	AD = 2 Wheel Drive Only (Ramcharger).	CB-MB = Compact Front Section Only.	W = Conventional Cab 4 Wheel Drive.
CODES:	AW = 4 Wheel Drive Only (Ramcharger).	P = Forward Control Chassis.	M = Motor Home.

MEDIUM-HEAVY CODES: XNT = Low Cab Forward. D = Conventional Cab. S = School Bus. W = 4-Wheel Drive.

AR=Use as Required

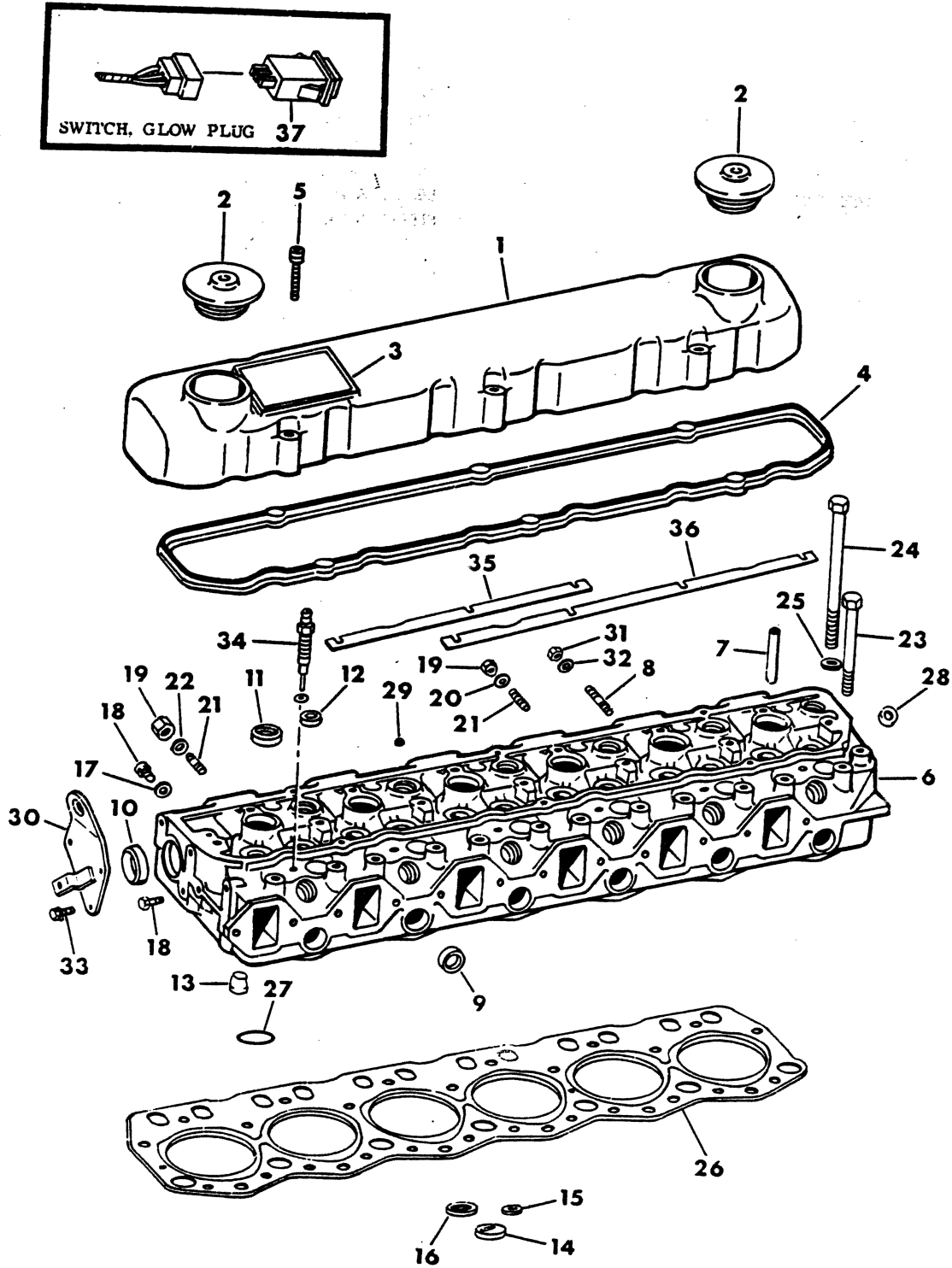
= New Part Number

Printed in U.S.A.

June, 1982

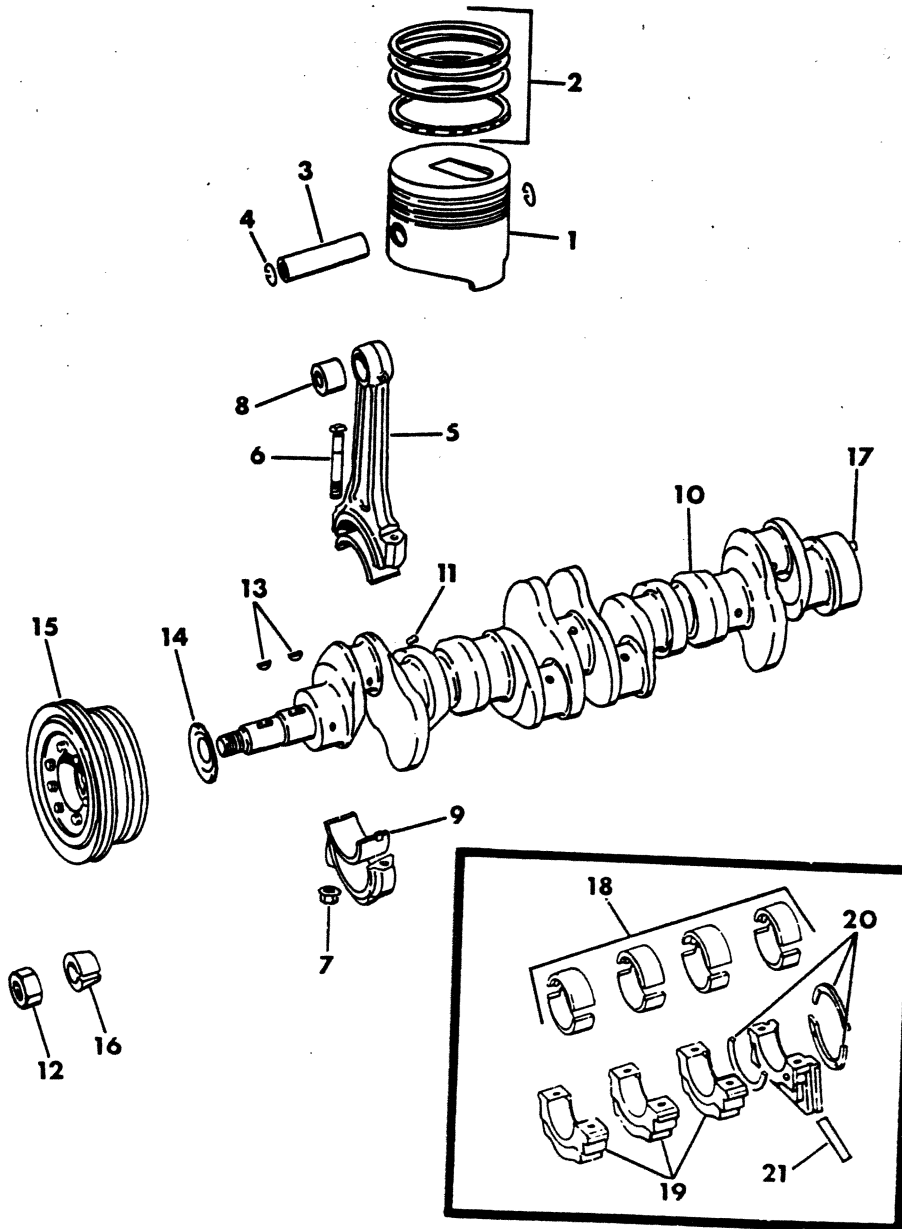
HEAD, CYLINDER & COVER (MMC DIESEL)

8356 600A



CRANKSHAFT-PISTON-CONNECTING ROD & BEARINGS (MMC DIESEL)

8356 7003



ITEM	PART NUMBER	QTY	MODEL	DESCRIPTION
HEAD,CYLINDER & COVER (MMC DIESEL)				
1	ME00 7200	1		COVER,Chaincase
2	ME00 0009	2		CAP,Oil Filter
3	ME00 7298	1		LABEL,78 E.P.A.
4	ME00 7197	1		GASKET,Rocker Cover
5	MH00 1012	6		SCREW
6	ME00 7299	1		HEAD,Cylinder
7	ME00 7013	12		GUIDE,Valve
8	MH00 2105	12		STUD,Water Outlet
9	MS66 6137	6		CAP,Sealing
10	MS66 6140	3		CAP,Sealing
11	MS66 6139	6		CAP,Sealing
12	MS66 6136	12		CAP,Sealing
13	ME00 7011	7		DIRECTOR
14	ME00 7118	6		JET,Combustion Std.
	ME00 7119	6		JET,Combustion o/s.
15	ME00 7007	6		INSERT,Valve Seat Exh.Finish
	ME00 7010	6		INSERT,Valve Seat Exh.Finish o/s.
16	ME00 7005	6		INSERT,Valve Seat Inlet Finish
	ME00 7009	6		INSERT,Valve Seat Inlet Finish o/s
17	MH03 5113	1		GASKET
18	MF10 0051	3		BOLT
19	MH00 4007	6		NUT,Exh.Manif.
20	MF45 0006	4		WASHER,Plain
21	MF40 7006	6		STUD
22	MF00 7173	2		WASHER,Exh.Manif.
23	ME00 7012	18		BOLT,Cyl.Head
24	ME00 7015	7		BOLT,Cyl.Head
25	ME00 7018	7		WASHER,Cyl.Head
26	ME00 7193	1		GASKET,Cyl.Head
27	MH03 5133	1		O-RING
28	ME00 7016	6		GASKET,Nozzel Tip
29	ME00 7017	6		GASKET,Glow Plug
30	ME00 7207	1		HANGER
31	MF43 0005	12		NUT
32	MF45 0405	12		WASHER,Spring
33	MF24 1251	3		BOLT,w/Washer
34	ME00 7092	6		PLUG,Glow
35	ME00 7116	1		PLATE,Connection
36	ME00 7091	1		PLATE,Connection
37	4114 195	1		SWITCH, Glow Plug

LIGHT A = All Sport Utility (Ramcharger).

B = All Compact Models.

D = Conventional Cab.

DUTY AD = 2 Wheel Drive Only (Ramcharger).

CB-MB = Compact Front Section Only.

W = Conventional Cab 4 Wheel

CODES: AW = 4 Wheel Drive Only (Ramcharger).

P = Forward Control Chassis.

M = Motor Home.

MEDIUM-HEAVY CODES: XNT = Low Cab Forward. D = Conventional Cab. S = School Bus. W = 4-Wheel Drive.

AR=Use as Required

= New Part Number

Printed in U.S.A.

ITEM	PART NUMBER	QTY	MODEL	DESCRIPTION
CRANKSHAFT-PISTON-CONNECTING ROD & BEARINGS (MMC DIESEL)				
1	ME00 7136	6		PISTON,Std.
	ME00 7363	6		.25 o/s.
	ME00 7364	6		.50 o/s.
	ME00 7365	6		.75 o/s.
	ME00 7366	6		1.00o/s.
2	ME00 7221	1		RING SET,Std.
	ME00 7222	1		.25 o/s.
	ME00 7223	1		.50 o/s.
	ME00 7224	1		.75 o/s.
	ME00 7225	1		1.00o/s.
3	ME00 7156	6		PIN,Piston
4	ME00 7157	12		RING,Snap
5	ME00 7158	6		ROD,Connecting
6	ME00 7160	12		BOLT
7	ME00 7065	12		NUT
8	ME00 7161	6		BUSHING
9	ME00 7164	12		BEARING,Conn.Rod Std.
	ME00 7165	12		.25 u/s.
	ME00 7166	12		.50 u/s.
	ME00 7167	12		.75 u/s.
10	ME00 7229	1		CRANKSHAFT
11	MH03 7236	6		PLUG
12	MH00 4045	1		NUT
13	MS47 6137	1		KEY,Woodruff
14	ME00 7066	1		PLATE,Baffle
15	ME00 7228	1		PULLEY,Crankshaft
16	ME00 7227	1		CONE
17	MF47 2446	1		PIN,Dowel
18	ME00 7112	1		BEARING Set,Main Std.
	ME00 7113	1		.25 u/s.
	ME00 7114	1		.50 u/s.
	ME00 7115	1		.75 u/s.
19	ME00 7037	1		CAP,Bearing NO.1
	ME00 7038	1		NO.2
	ME00 7039	1		NO.3
	ME00 7106	1		NO.4
	ME00 7107	1		NO.5
	ME00 7108	1		NO.6
	ME00 7109	1		NO.7
20	ME00 7049	3		PLATE,Thrust-Std.
	ME00 7050	3		0.15 o/s.
	ME00 7051	3		0.30 o/s.
	ME00 7052	3		0.45 o/s.
21	ME00 7036	4		SEAL,Side

LIGHT A = All Sport Utility (Ramcharger).

B = All Compact Models.

D = Conventional Cab.

DUTY AD = 2 Wheel Drive Only (Ramcharger).

CB-MB = Compact Front Section Only.

W = Conventional Cab 4 Wheel Drive.

CODES: AW = 4 Wheel Drive Only (Ramcharger).

P = Forward Control Chassis.

M = Motor Home.

MEDIUM-HEAVY CODES: XNT = Low Cab Forward. D = Conventional Cab. S = School Bus. W = 4-Wheel Drive.

AR=Use as Required

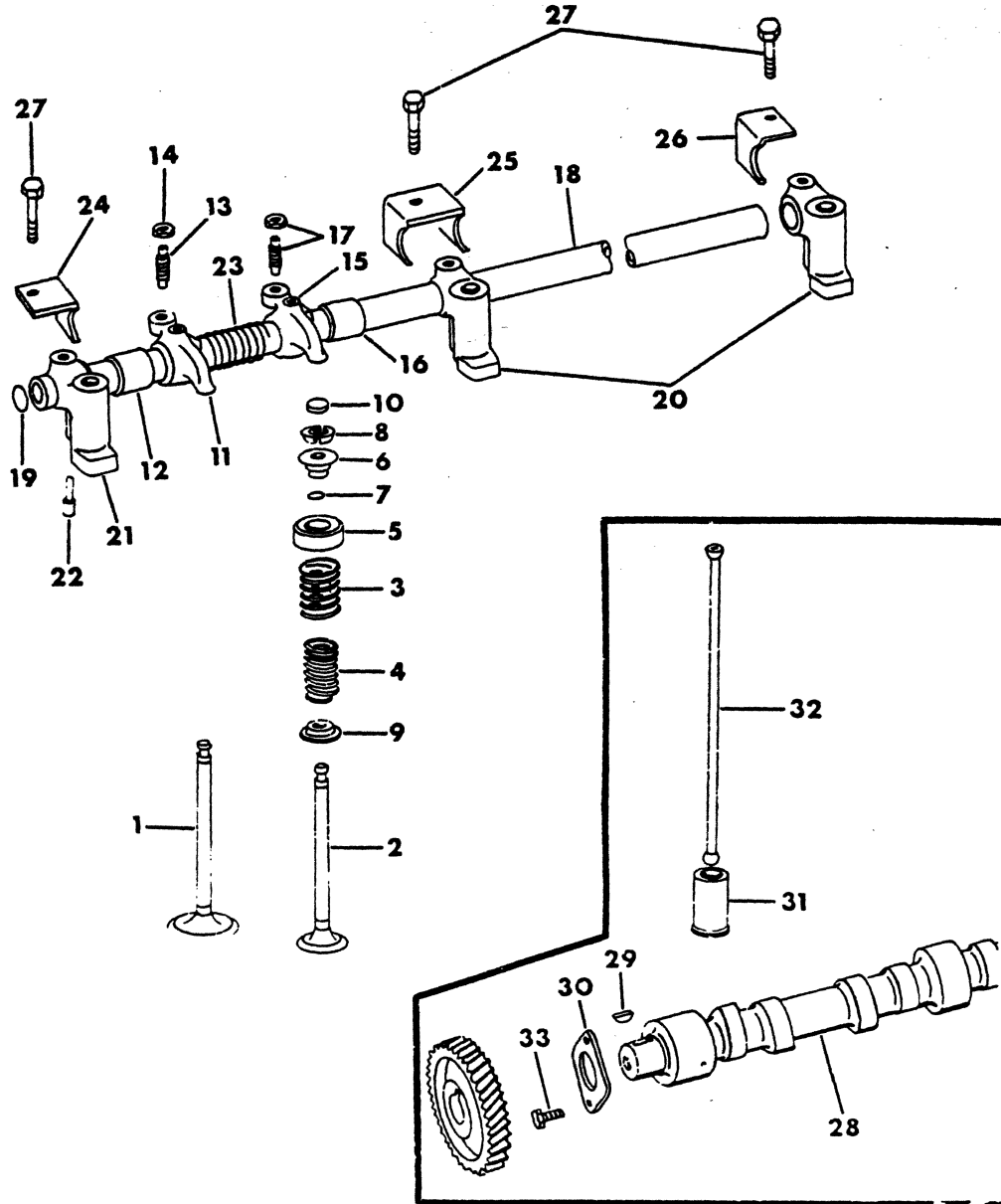
#=New Part Number

Printed in U.S.A.

June, 1982

CAMSHAFT & VALVE MECHANISM (MMC DIESEL)

8356 800A



ITEM	PART NUMBER	QTY	MODEL	DESCRIPTION
CAMSHAFT & VALVE MECHANISM (MMC DIESEL)				
1	ME00 7020	6		VALVE,Intake
2	ME00 7025	6		VALVE,Exhaust
3	ME00 7028	12		SPRING,Valve Outer
4	ME00 7021	12		SPRING,Valve Inner
5	ME00 7122	6		CAP,Valve Spring
6	ME00 7022	12		RETAINER,Upper
7	ME00 7031	12		SEAL,Rubber
8	ME00 7029	24		VALVE,Cotter
9	ME00 7023	12		RETAINER,Lower
10	ME00 7030	12		CAP
11	ME00 7123	6		ROCKER,Inlet
12	ME00 7125	6		BUSHING
13	MH00 1002	6		SCREW,Adjusting
14	MF43 0841	12		NUT
15	ME00 7124	6		ROCKER,Exhaust
16	ME00 7125	6		BUSHING
17	MH00 1002	6		SCREW,Adjusting
18	ME00 7199	1		SHAFT,Rocker
19	ME00 7026	2		PLUG,Expansion
20	ME00 7120	6		BRACKET,Rocker Shaft
21	ME00 7121	1		BRACKET,Rocker Shaft
22	ME00 7035	1		SCREW,Set
23	ME00 7027	6		SPRING,Rocker
24	ME00 7032	1		RETAINER,Front
25	ME00 7033	5		RETAINER,Mid
26	ME00 7034	1		RETAINER,Rear
27	MF24 0057	7		BOLT,w/Washer
28	ME00 7202	1		CAMSHAFT
29	MS47 6137	1		KEY,Woodruff
30	ME00 7129	1		PLATE,Thrust
31	ME02 3171	12		TAPPET
32	ME00 7130	12		ROD,Push
33	MF24 1252	2		BOLT,w/Washer

LIGHT	A = All Sport Utility (Ramcharger).	B = All Compact Models.	D = Conventional Cab.
DUTY	AD = 2 Wheel Drive Only (Ramcharger).	CB-MB = Compact Front Section Only.	W = Conventional Cab 4 Wheel Drive.
CODES:	AW = 4 Wheel Drive Only (Ramcharger).	P = Forward Control Chassis.	M = Motor Home.

MEDIUM-HEAVY CODES: XNT = Low Cab Forward. D = Conventional Cab. S = School Bus. W = 4-Wheel Drive.

AR=Use as Required

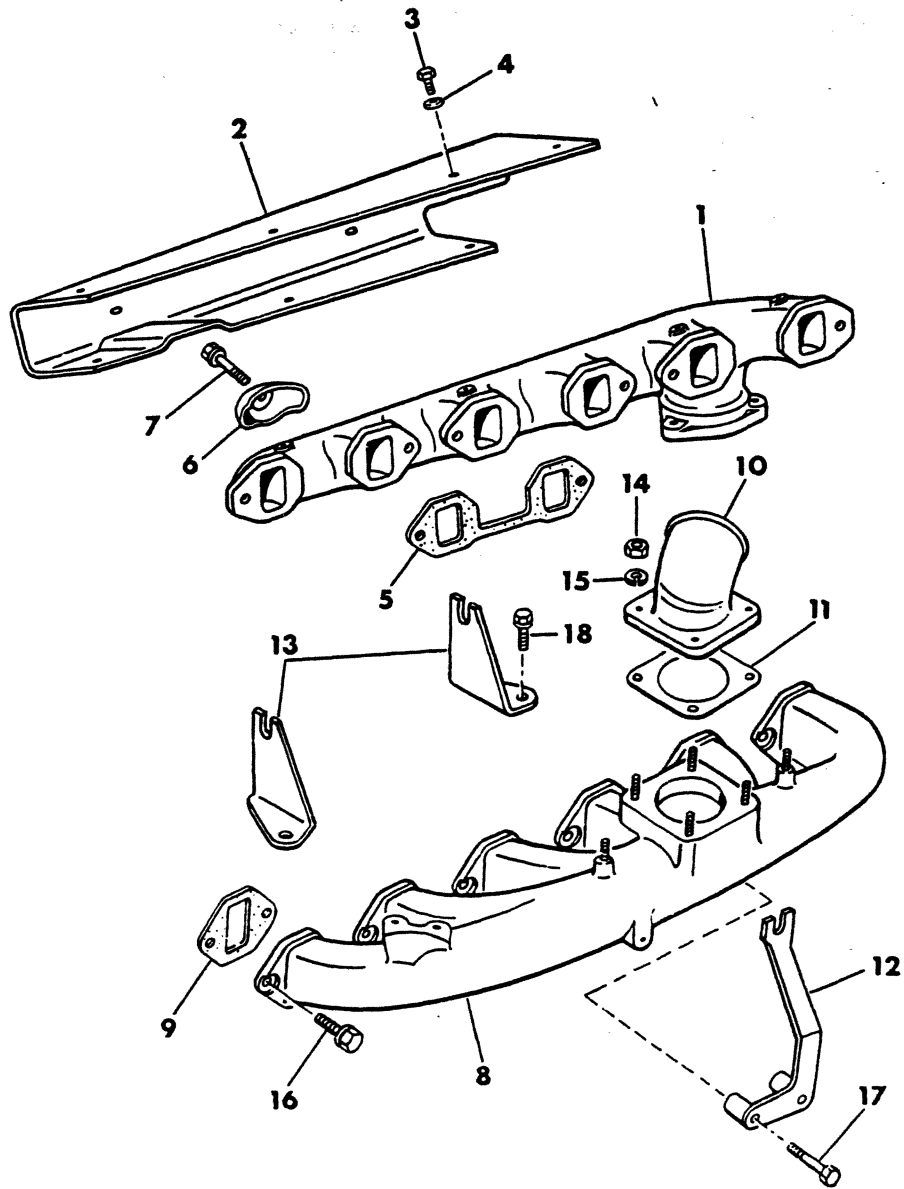
=New Part Number

Printed in U.S.A.

June, 1982

MANIFOLD,INTAKE & EXHAUST (MMC DIESEL)

8356 900



ITEM	PART NUMBER	QTY	MODEL	DESCRIPTION
MANIFOLD,INTAKE & EXHAUST (MMC DIESEL)				
1	ME00 7242	1		MANIFOLD,Exhaust
2	ME00 7241	1		SHIELD,Heat
3	ME00 0025	9		BOLT
4	MF45 0005	9		WASHER,Plain
5	ME00 7074	3		GASKET,Exhaust Manif.
6	ME02 0535	3		BRIDGE
7	MH00 0245	3		BOLT
8	ME00 7313	1		MANIFOLD,Int.
9	ME00 7073	6		GASKET,Int.Manif.
10	ME00 7240	1		COUPLER
11	ME02 1976	1		GASKET
12	ME00 7236	1		BRACKET,Air Cleaner
13	ME00 7305	2		BRACKET,Air Cleaner
14	MF43 0005	6		NUT
15	MF45 0405	6		WASHER,Spring
16	MF24 3653	10		BOLT,w/Washer
17	MF24 0064	2		BOLT,w/Washer
18	MF24 0053	2		BOLT,w/Washer

LIGHT A = All Sport Utility (Ramcharger).
DUTY AD = 2 Wheel Drive Only (Ramcharger).
CODES: AW = 4 Wheel Drive Only (Ramcharger).

B = All Compact Models.
 CB-MB = Compact Front Section Only.
 P = Forward Control Chassis.

D = Conventional Cab.
 W = Conventional Cab 4 Wheel Drive.
 M = Motor Home.

MEDIUM-HEAVY CODES: XNT = Low Cab Forward. D = Conventional Cab. S = School Bus. W = 4-Wheel Drive.

AR=Use as Required

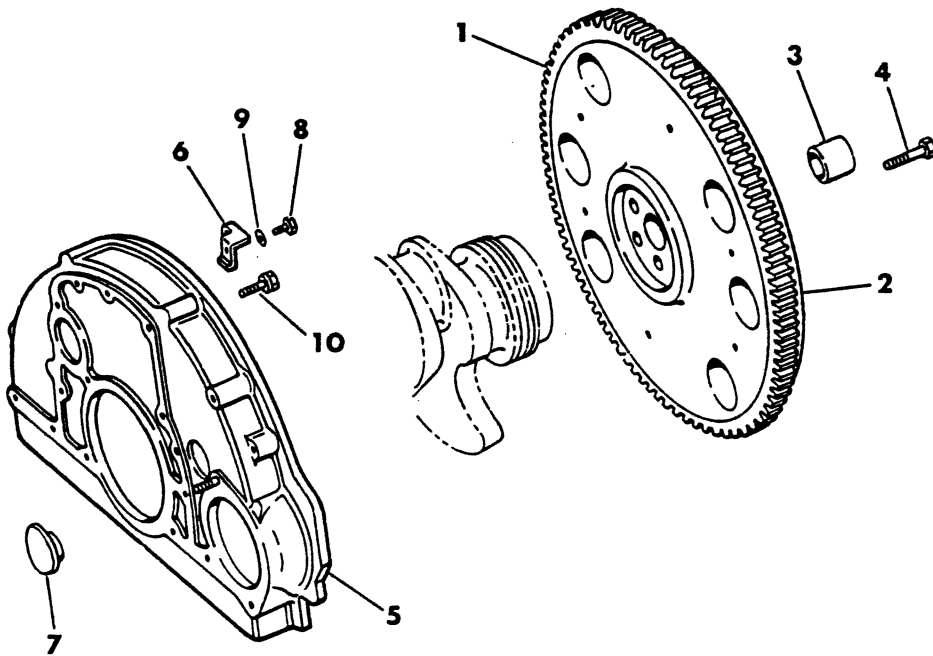
=New Part Number

Printed in U.S.A.

June, 1982

FLYWHEEL & HOUSING (MMC DIESEL)

8356 1000

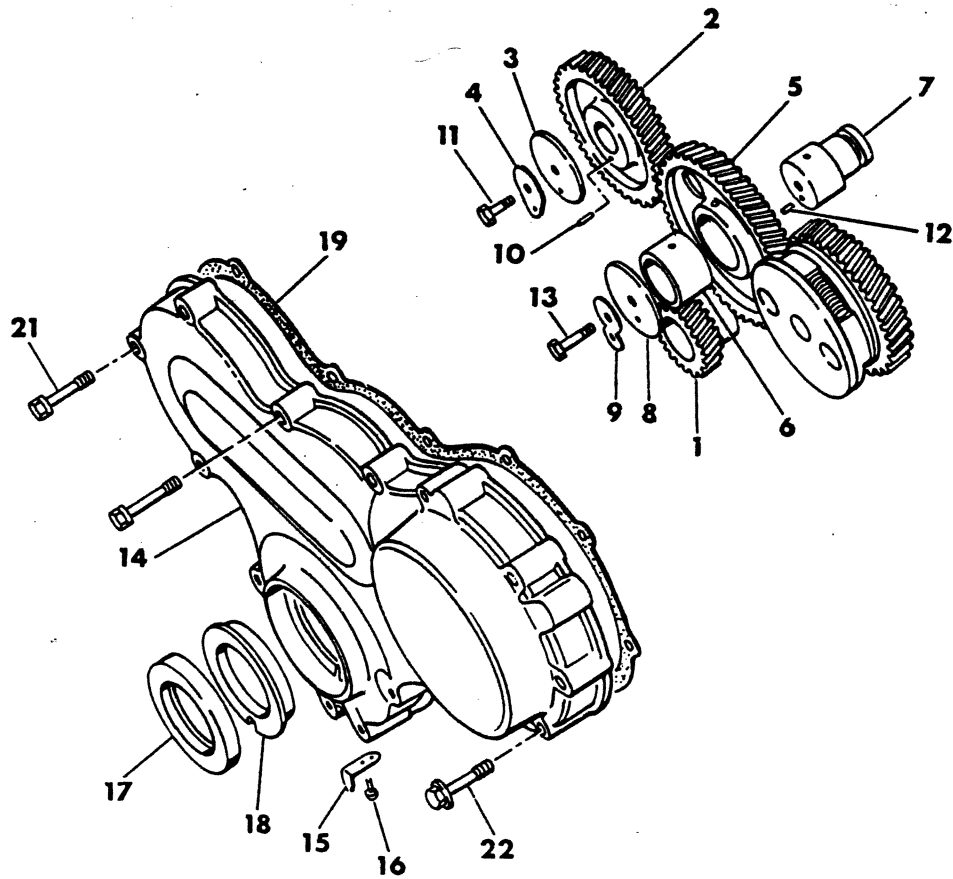


ITEM	PART NUMBER	QTY	MODEL	DESCRIPTION
FLYWHEEL & HOUSING (MMC DIESEL)				
1	ME00 7230	1		FLYWHEEL,w/Auto.Trans.
	4086 433	1		FLYWHEEL,w/Std.Trans.
2	ME00 7231	1		GEAR,Ring
3	ME00 7232	1		BUSHING,Flywheel
4	MH00 0290	6		BOLT,Flywheel
5	ME00 7306	1		HOUSING,Flywheel
	1736 536	AR		DOWEL, Flywheel Hsg. to Clutch Hsg.
6	ME00 7208	1		POINTER
7	ME00 7215	1		PLUG,Dust
8	MF10 0001	1		BOLT
9	MF45 0403	1		WASHER, Spring
10	MF30 0845	11		BOLT,w/Washer
	405 8428	1		PLATE, Drive
	410 6575	1		CONVERTOR, Torque
	191 641	6		SCREW

LIGHT	A = All Sport Utility (Ramcharger).	B = All Compact Models.	D = Conventional Cab.
DUTY	AD = 2 Wheel Drive Only (Ramcharger).	CB-MB = Compact Front Section Only.	W = Conventional Cab 4 Wheel Drive.
CODES:	AW = 4 Wheel Drive Only (Ramcharger).	P = Forward Control Chassis.	M = Motor Home.
MEDIUM-HEAVY CODES: XNT = Low Cab Forward. D = Conventional Cab. S = School Bus. W = 4-Wheel Drive.			
AR=Use as Required	# =New Part Number	Printed in U.S.A.	June, 1982

8356 1100

TIMING GEAR & CASE (MMC DIESEL)



ITEM	PART NUMBER	QTY	MODEL	DESCRIPTION
TIMING GEAR & CASE (MMC DIESEL)				
1	ME00 7067	1		GEAR,Crankshaft
2	ME00 7068	1		GEAR,Camshaft
3	ME00 7169	1		WASHER,Camshaft
4	ME00 7168	1		WASHER,Camshaft Lock
5	ME00 7069	1		IDLER
6	ME02 0488	1		BUSHING,Idler
7	ME00 7170	1		SHAFT,Idler
8	ME02 0491	1		PLATE,Thrust
9	ME00 7171	1		WASHER
10	MF47 2551	1		PIN,Spring
11	MF13 8114	1		BOLT
12	MF47 2569	1		PIN,Spring
13	MF10 1282	1		BOLT
14	ME00 7211	1		CASE,Gear
15	ME00 7210	1		POINTER
16	MS46 8101	2		RIVET
17	ME00 7062	1		SEAL,Oil
18	ME00 7061	1		PLATE,Oil Seal
19	ME00 7064	1		GASKET,Timing Gear Case
20	MF24 1264	11		BOLT,w/Washer
21	MF24 1262	1		BOLT,w/Washer
22	MF24 1266	3		BOLT,w/Washer

LIGHT	A = All Sport Utility (Ramcharger).	B = All Compact Models.	D = Conventional Cab.
DUTY	AD = 2 Wheel Drive Only (Ramcharger).	CB-MB = Compact Front Section Only.	W = Conventional Cab 4 Wheel Drive.
CODES:	AW = 4 Wheel Drive Only (Ramcharger).	P = Forward Control Chassis.	M = Motor Home.

MEDIUM-HEAVY CODES: XNT = Low Cab Forward. D = Conventional Cab. S = School Bus. W = 4-Wheel Drive.

AR=Use as Required

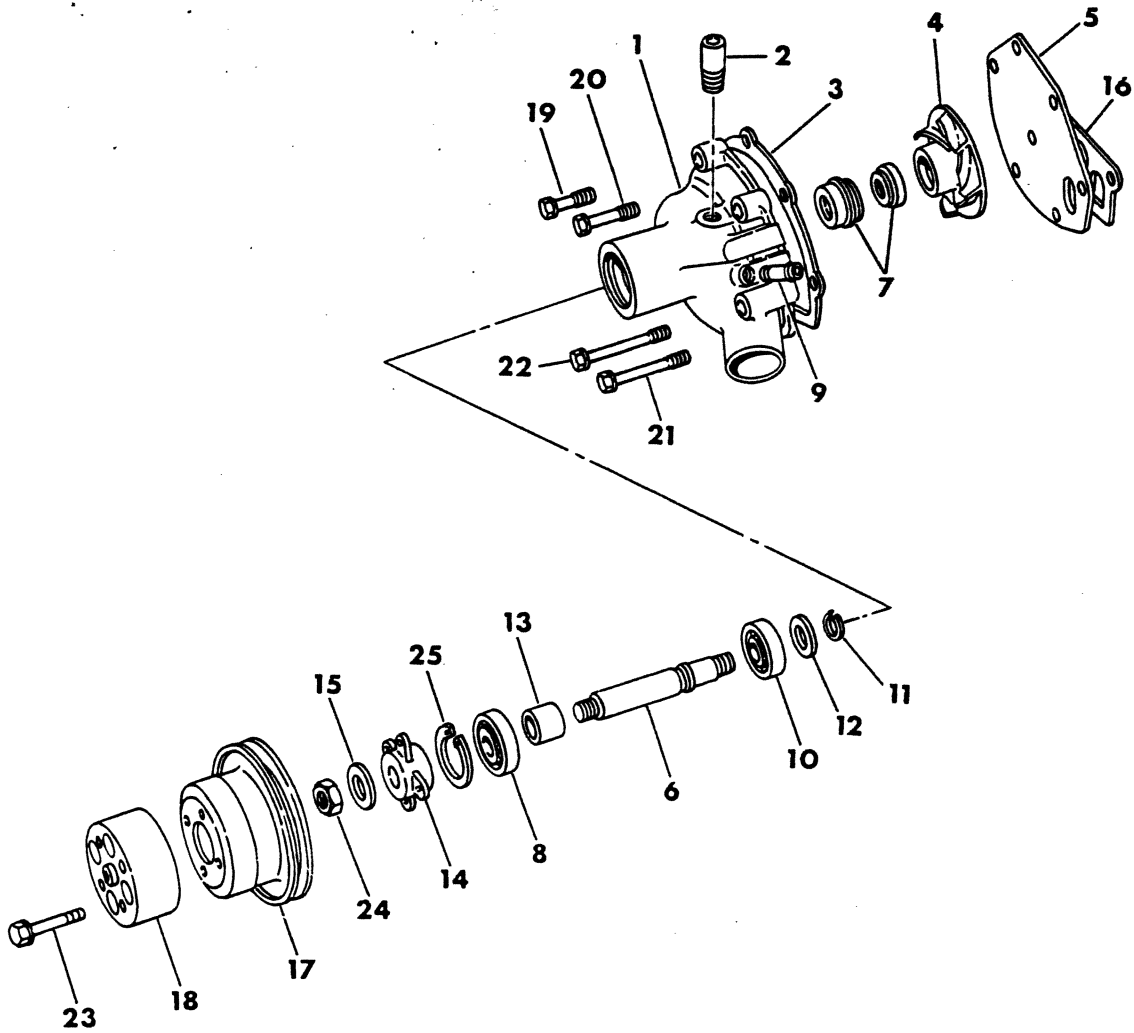
= New Part Number

Printed in U.S.A.

June, 1982

PUMP WATER (MMC DIESEL)

8356 1200



ITEM	PART NUMBER	QTY	MODEL	DESCRIPTION
	ME00 7264	1		PUMP Water Pump Assy.
1	ME00 7265	1		CASE,Water Pump
2	ME00 7003	1		PIPE,By-Pass
3	ME00 7175	1		GASKET,Pump Case
4	ME00 7180	1		IMPELLER
5	ME00 7176	1		COVER
6	ME00 7181	1		SHAFT,Pump
7	MH03 4043	1		SEAL,Unit
8	MS55 6183	1		BEARING,Ball
9	ME00 7267	1		JOINT,Heater
10	MS55 6063	1		BEARING,Ball
11	ME00 7177	1		RING,Snap
12	MH00 5045	1		WASHER
13	ME00 7178	1		SPACER
14	ME00 7179	1		FLANGE
15	MH00 5012	1		WASHER
16	ME00 7083	1		GASKET
17	ME00 7266	1		PULLEY,Water Pump
18	ME00 7315	1		SPACER,Fan
19	MF24 0059	2		BOLT,w/Washer
20	MF24 0062	2		BOLT,w/Washer
21	MF24 0065	1		BOLT,w/Washer
22	MF24 0067	1		BOLT,w/Washer
23	MS24 6300	4		BOLT,w/Washer
24	MF43 0008	1		NUT
25	MF52 2228	1		RING,Snap

LIGHT	A = All Sport Utility (Ramcharger).	B = All Compact Models.	D = Conventional Cab.
DUTY	AD = 2 Wheel Drive Only (Ramcharger).	CB-MB = Compact Front Section Only.	W = Conventional Cab 4 Wheel Drive.
CODES:	AW = 4 Wheel Drive Only (Ramcharger).	P = Forward Control Chassis.	M = Motor Home.

MEDIUM-HEAVY CODES: XNT = Low Cab Forward. D = Conventional Cab. S = School Bus. W = 4-Wheel Drive.

AR=Use as Required

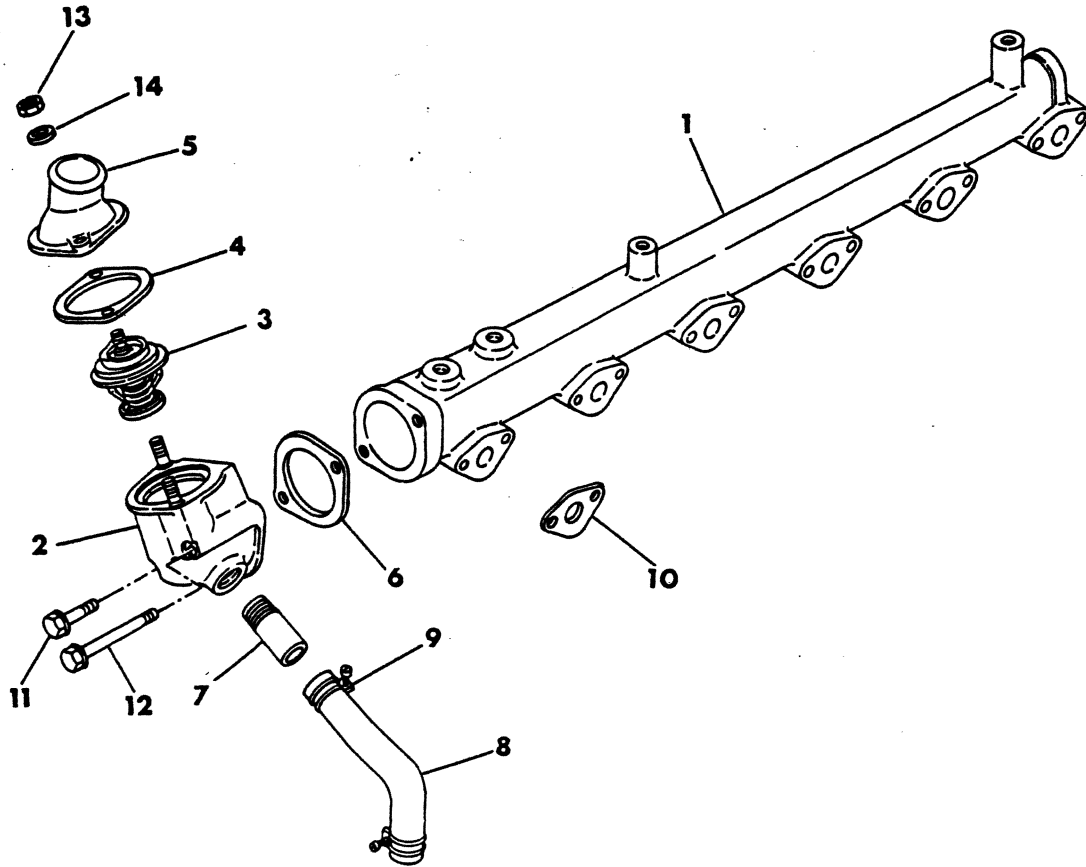
= New Part Number

Printed in U.S.A.

June, 1982

COOLING SYSTEM (MMC DIESEL)

8356 1300



ITEM	PART NUMBER	QTY	MODEL	DESCRIPTION
------	-------------	-----	-------	-------------

COOLING SYSTEM (MMC DIESEL)

	ME00 7269	1		PIPE,Assy. Water Outlet
1	ME00 7270	1		PIPE,Water Outlet
2	ME00 7271	1		CASE,Thermostat
3	ME00 7183	1		THERMOSTAT
4	ME00 7273	1		GASKET
5	ME00 7274	1		COVER,Thermostat
6	ME00 7084	1		GASKET
7	ME00 7003	1		PIPE
8	ME00 7272	1		HOSE,By-Pass
9	MS66 6012	2		CLAMP,Hose
10	ME00 7182	6		GASKET
11	MF24 0059	1		BOLT,w/Washer
12	MF24 0068	1		BOLT,w/Washer
13	MF43 0005	2		NUT
14	MF45 0405	2		WASHER,Spring

LIGHT A = All Sport Utility (Ramcharger). B = All Compact Models. D = Conventional Cab.
DUTY AD = 2 Wheel Drive Only (Ramcharger). CB-MB = Compact Front Section Only. W = Conventional Cab 4 Wheel Drive.
CODES: AW = 4 Wheel Drive Only (Ramcharger). P = Forward Control Chassis. M = Motor Home.

MEDIUM-HEAVY CODES: XNT = Low Cab Forward. D = Conventional Cab. S = School Bus. W = 4-Wheel Drive.

AR=Use as Required

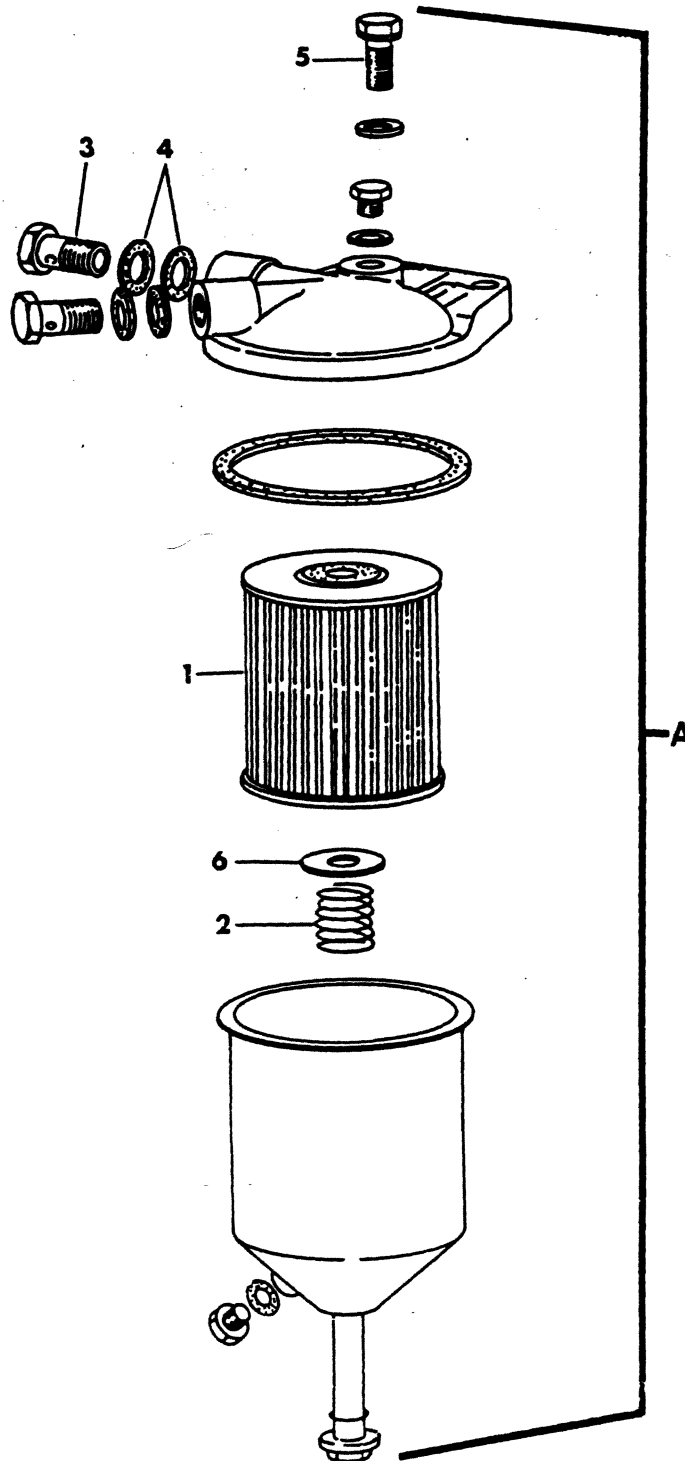
=New Part Number

Printed in U.S.A.

June, 1982

FILTER FUEL (MMC DIESEL)

8356 1600A

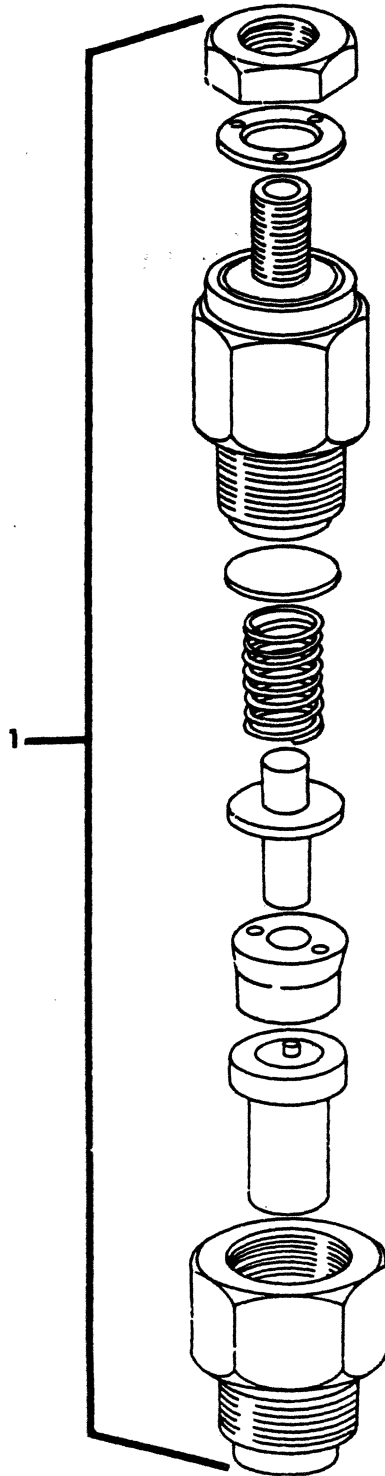


ITEM	PART NUMBER	QTY	MODEL	DESCRIPTION
FILTER FUEL (MMC DIESEL)				
A	ME00 7314	1		FILTER,Fuel Assy.
1	ME00 7318	1		ELEMENT,Assy.
2	ME00 0017	1		SPRING,Set
3	MH03 7087	2		BOLT,Connector
4	MH03 5069	4		GASKET
5	MF00 7319	AR		DRAINCOCK
6	MF45 0006	2		WASHER,Plain
	ME00 7320	1		FILTER,SEAL & O-RING

LIGHT	A = All Sport Utility (Ramcharger).	B = All Compact Models.	D = Conventional Cab.
DUTY	AD = 2 Wheel Drive Only (Ramcharger).	CB-MB = Compact Front Section Only.	W = Conventional Cab 4 Wheel Drive.
CODES:	AW = 4 Wheel Drive Only (Ramcharger).	P = Forward Control Chassis.	M = Motor Home.
MEDIUM-HEAVY CODES: XNT = Low Cab Forward. D = Conventional Cab. S = School Bus. W = 4-Wheel Drive.			
AR=Use as Required		# =New Part Number	Printed in U.S.A.

8356 1700A

NOZZLE (MMC DIESEL)



ITEM	PART NUMBER	QTY	MODEL	DESCRIPTION
------	-------------	-----	-------	-------------

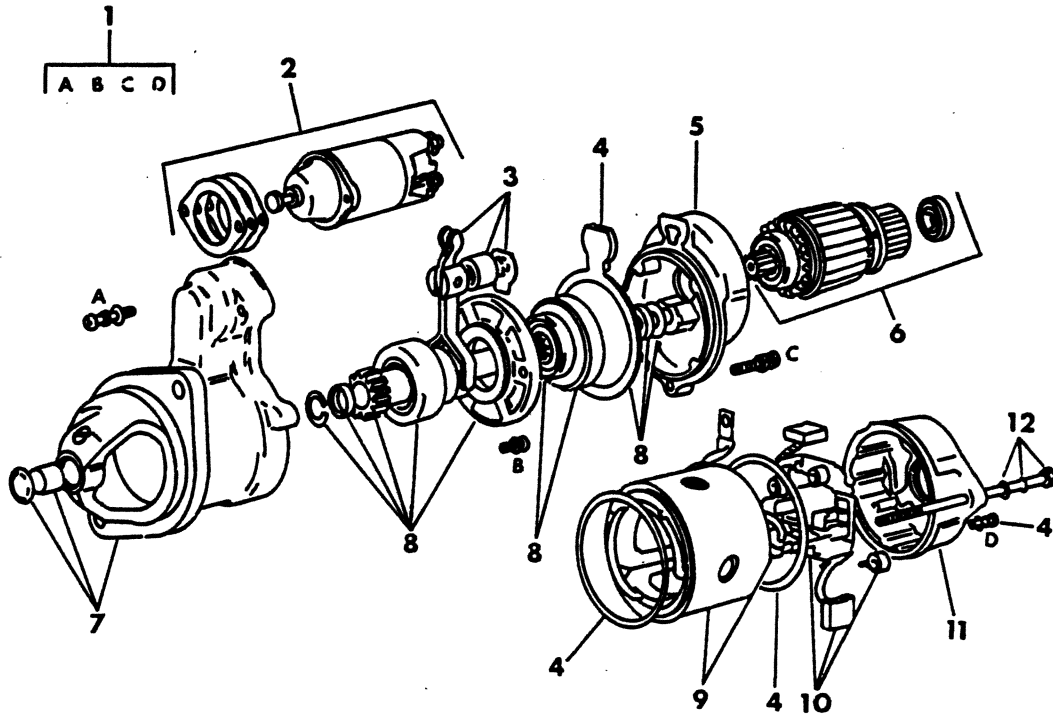
NOZZLE (MMC DIESEL)

	ME00 7089	6		NOZZLE Assy.
--	-----------	---	--	--------------

LIGHT	A = All Sport Utility (Ramcharger).	B = All Compact Models.	D = Conventional Cab.
DUTY	AD = 2 Wheel Drive Only (Ramcharger).	CB-MB = Compact Front Section Only.	W = Conventional Cab 4 Wheel Drive.
CODES:	AW = 4 Wheel Drive Only (Ramcharger).	P = Forward Control Chassis.	M = Motor Home.
MEDIUM-HEAVY CODES: XNT = Low Cab Forward. D = Conventional Cab. S = School Bus. W = 4-Wheel Drive.			
AR=Use as Required	# =New Part Number	Printed in U.S.A.	June, 1982

STARTER (MMC DIESEL)

8356 22G0



ITEM	PART NUMBER	QTY	MODEL	DESCRIPTION
STARTER (MMC DIESEL)				
	ME00 7293	1		STARTER,Assy.
1	ME00 9223	1		SCREW SET
2	ME00 9214	1		SWITCH,Assy.
3	ME00 9213	1		LEVER,Assy.
4	ME00 9224	1		PACKING SET
5	ME00 9220	1		BRACKET,Center
6	ME00 9221	1		ARMATURE SET
7	ME00 9218	1		BRACKET Assy,Front
8	ME00 9219	1		SHAFT ASSY.,Gear
9	ME00 9222	1		YOKE ASSY.
10	ME00 9217	1		BRUSH HOLDER ASSY.
11	ME00 9216	1		BRACKET,Rear
12	ME00 9215	1		BOLT SET

LIGHT	A = All Sport Utility (Ramcharger).	B = All Compact Models.	D = Conventional Cab.
DUTY	AD = 2 Wheel Drive Only (Ramcharger).	CB-MB = Compact Front Section Only.	W = Conventional Cab 4 Wheel Drive.
CODES:	AW = 4 Wheel Drive Only (Ramcharger).	P = Forward Control Chassis.	M = Motor Home.

MEDIUM-HEAVY CODES: XNT = Low Cab Forward. D = Conventional Cab. S = School Bus. W = 4-Wheel Drive.

AR=Use as Required

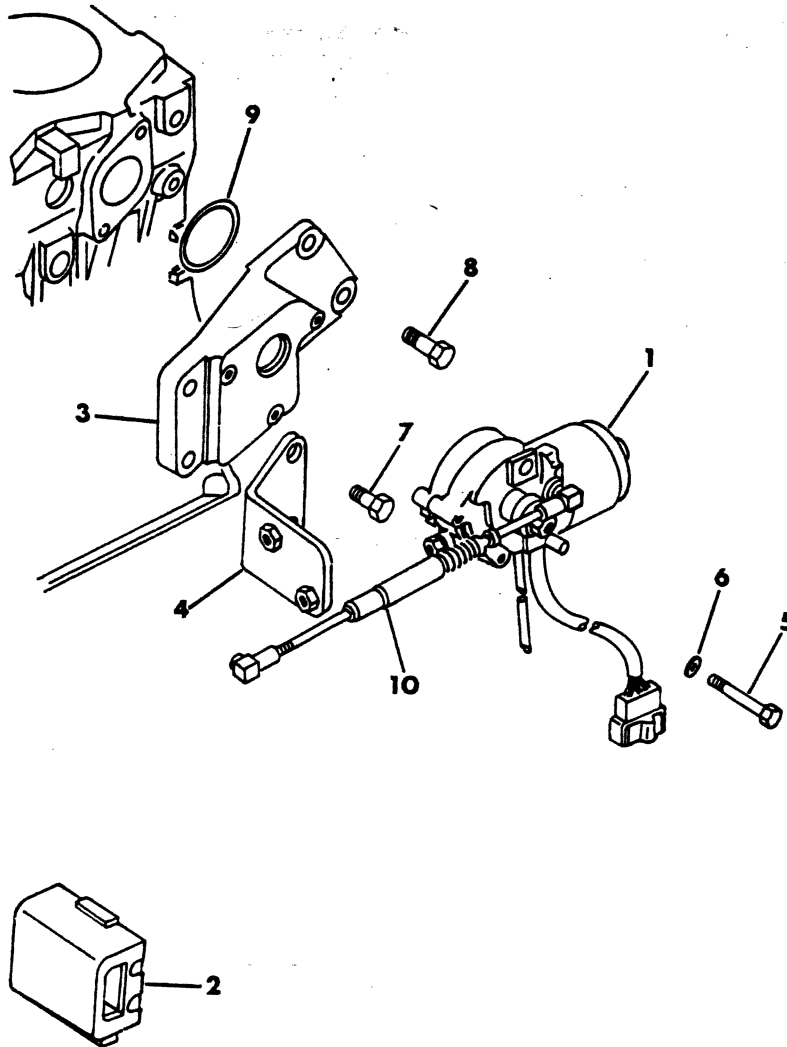
= New Part Number

Printed in U.S.A.

June, 1982

CONTROL,ENGINE (MMC DIESEL)

8356 2400A

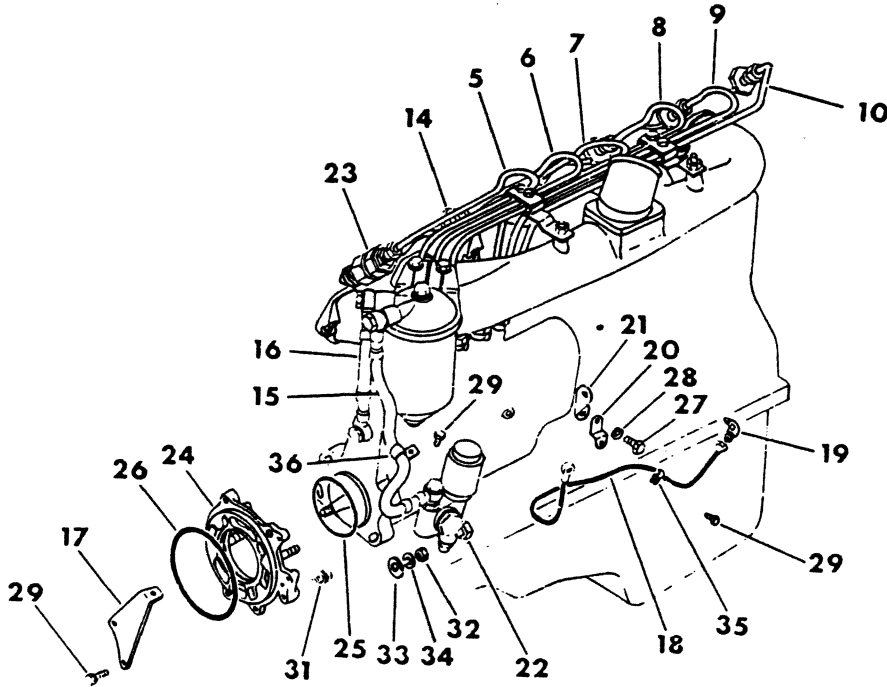
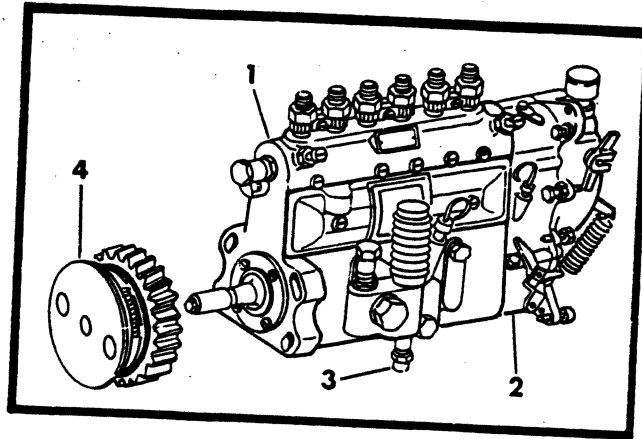
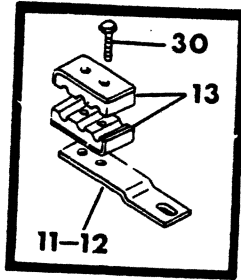


ITEM	PART NUMBER	QTY	MODEL	DESCRIPTION
CONTROL,ENGINE (MMC DIESEL)				
1	ME00 7294	1		CONTROL, Motor Assy.
2	ME00 7295	1		RELAY, Fuel Control
3	ME00 7296	1		BRACKET, Fuel Control Motor
4	ME00 7297	1		BRACKET, Accel. Linkage
5	MF10 1240	3		BOLT
6	MF45 0404	3		WASHER, Spring
7	MF30 0842	2		BOLT, w/Washer
8	MF30 0845	3		BOLT, w/Washer
9	MF52 0030	1		O-RING
	4114 209	1		BRACKET, Fuel Control Mtg.
10	ME00 7312	1		ROD

LIGHT	A = All Sport Utility (Ramcharger).	B = All Compact Models.	D = Conventional Cab.
DUTY	AD = 2 Wheel Drive Only (Ramcharger).	CB-MB = Compact Front Section Only.	W = Conventional Cab 4 Wheel Drive.
CODES:	AW = 4 Wheel Drive Only (Ramcharger).	P = Forward Control Chassis.	M = Motor Home.
MEDIUM-HEAVY CODES: XNT = Low Cab Forward. D = Conventional Cab. S = School Bus. W = 4-Wheel Drive.			
AR = Use as Required	# = New Part Number	Printed in U.S.A.	June, 1982

FUEL SYSTEM (MMC DIESEL)

8356 2500



ITEM	PART NUMBER	QTY	MODEL	DESCRIPTION
FUEL SYSTEM (MMC DIESEL)				
	ME00 7291	1		PUMP,Injection Assy.& Governor
3	ME02 9078	1		PUMP,Feed Assy.
4	ME00 7278	1		TIMER,Assy.
	ME00 7284	1		PIPE INJECTION,ASSY.
5	ME00 7285	1		PIPE,Injection No.1
6	ME00 7286	1		PIPE,Injection No.2
7	ME00 7287	1		PIPE,Injection No.3
8	ME00 7288	1		PIPE,Injection No.4
9	ME00 7289	1		PIPE,Injection No.5
10	ME00 7290	1		PIPE,Injection No.6
	ME00 7277	1		PIPE,Injection Straight
11	ME93 0264	1		STAY,"A"
12	ME93 0265	1		STAY,"B"
13	ME00 7276	4		CLAMP
14	ME00 7303	1		PIPE,Fuel Leak Off "A"
15	ME91 0177	1		HOSE,Fuel Feed "A"
16	ME91 0145	1		HOSE,Fuel Feed "B"
17	ME00 7283	1		BRACKET,Fuel Hose
18	ME00 7282	1		PIPE,Oil
19	MH03 7316	1		CONNECTOR
20	ME93 0208	1		STAY,Oil Pipe
21	ME93 0263	1		STAY
22	MH03 7363	1		NIPPLE,Swivel
23	ME00 7089	6		NOZZLE,Assy.
	ME00 7087	1		FLANGE PLATE ASSY.
24	ME00 7086	1		PLATE,Flange
25	ME00 7085	1		O-RING
26	MH03 5098	1		O-RING
27	MF12 9671	1		BOLT
28	MF45 0407	1		WASHER,Spring
29	MF24 0023	4		BOLT,w/Washer
30	MF24 0029	4		BOLT,w/Washer
31	MF24 3653	1		BOLT,w/Washer
32	MF43 0006	4		NUT
33	MF45 0006	4		WASHER,Plain
34	MF45 0406	4		WASHER,Plain
35	MF47 7022	1		CLIP
36	MH02 0806	3		CLIP

LIGHT A = All Sport Utility (Ramcharger).

B = All Compact Models.

D = Conventional Cab.

DUTY AD = 2 Wheel Drive Only (Ramcharger).

CB-MB = Compact Front Section Only.

W = Conventional Cab 4 Wheel Drive.

CODES: AW = 4 Wheel Drive Only (Ramcharger).

P = Forward Control Chassis.

M = Motor Home.

MEDIUM-HEAVY CODES: XNT = Low Cab Forward. D = Conventional Cab. S = School Bus. W = 4-Wheel Drive.

AR=Use as Required

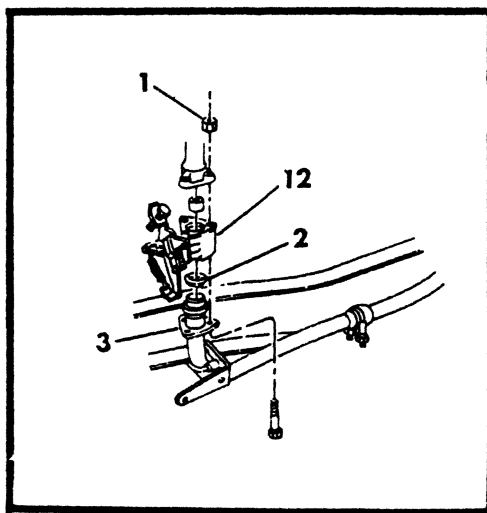
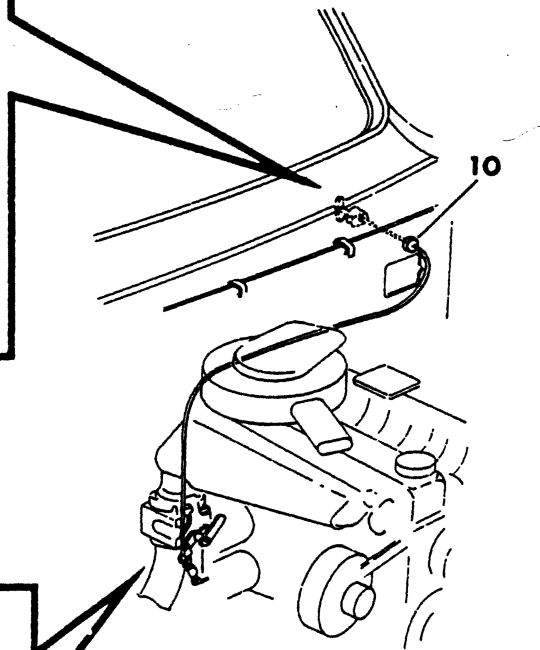
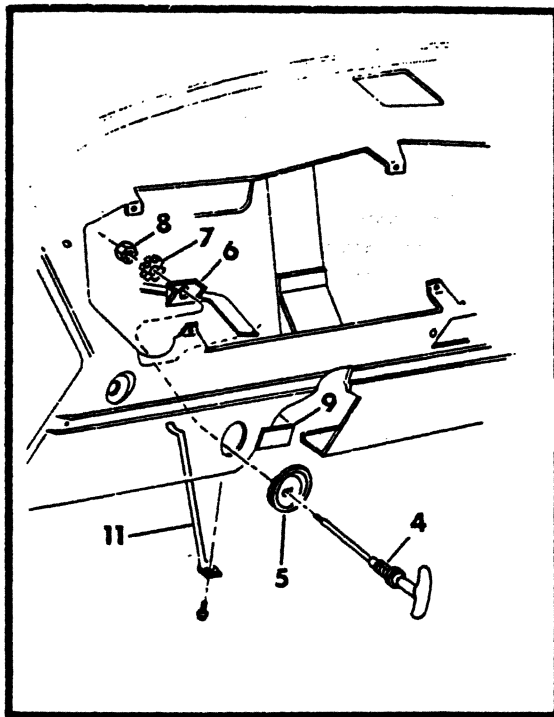
= New Part Number

Printed in U.S.A.

June, 1982

VALVE, HEAT BOOST VALVE & CONTROL

8353 2600



ITEM	PART NUMBER	QTY	MODEL	DESCRIPTION
------	-------------	-----	-------	-------------

VALVE,HEAT BOOST VALVE & CONTROL

1	152 364	3		NUT,Lock
2	4115 450	2		SEAL,Exhaust Pipe
3	2232 653			FLANGE,Exhaust Pipe
4	3730 524			CABLE,Control 65"
5	3489 744			BEZEL
6				BRACKET,(Not Serv.)
7	138 498			WASHER,Lock
8	124 934			NUT,9/16-18
9	4114 163			DECAL
10	3695 100			GROMMET
11	3635 520			BRACKET,Reinf.
12	ME00 7350			VALVE,Heat Boost

LIGHT	A = All Sport Utility (Ramcharger).	B = All Compact Models.	D = Conventional Cab.
DUTY	AD = 2 Wheel Drive Only (Ramcharger).	CB-MB = Compact Front Section Only.	W = Conventional Cab 4 Wheel Drive.
CODES:	AW = 4 Wheel Drive Only (Ramcharger).	P = Forward Control Chassis.	M = Motor Home.
MEDIUM-HEAVY CODES: XNT = Low Cab Forward. D = Conventional Cab. S = School Bus. W = 4-Wheel Drive.			

AR=Use as Required

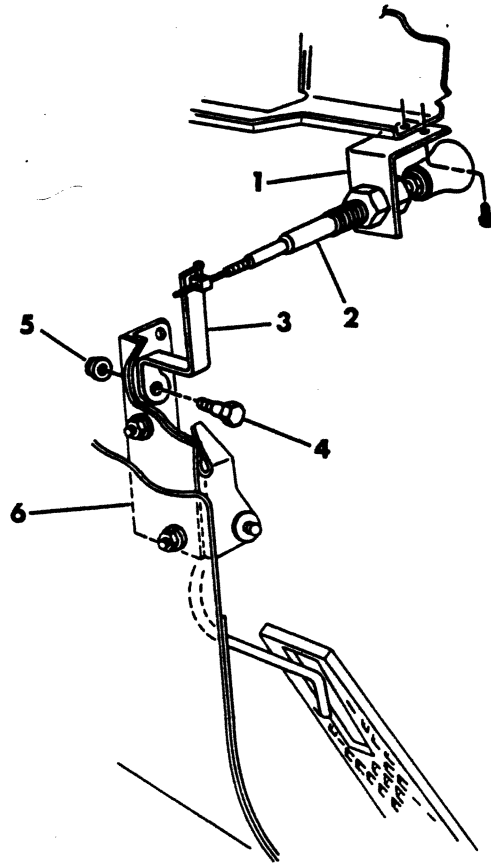
#=New Part Number

Printed in U.S.A.

June, 1982

CONTROL, IDLE (MMC DIESEL)

8356 2700A



ITEM	PART NUMBER	QTY	MODEL	DESCRIPTION
------	-------------	-----	-------	-------------

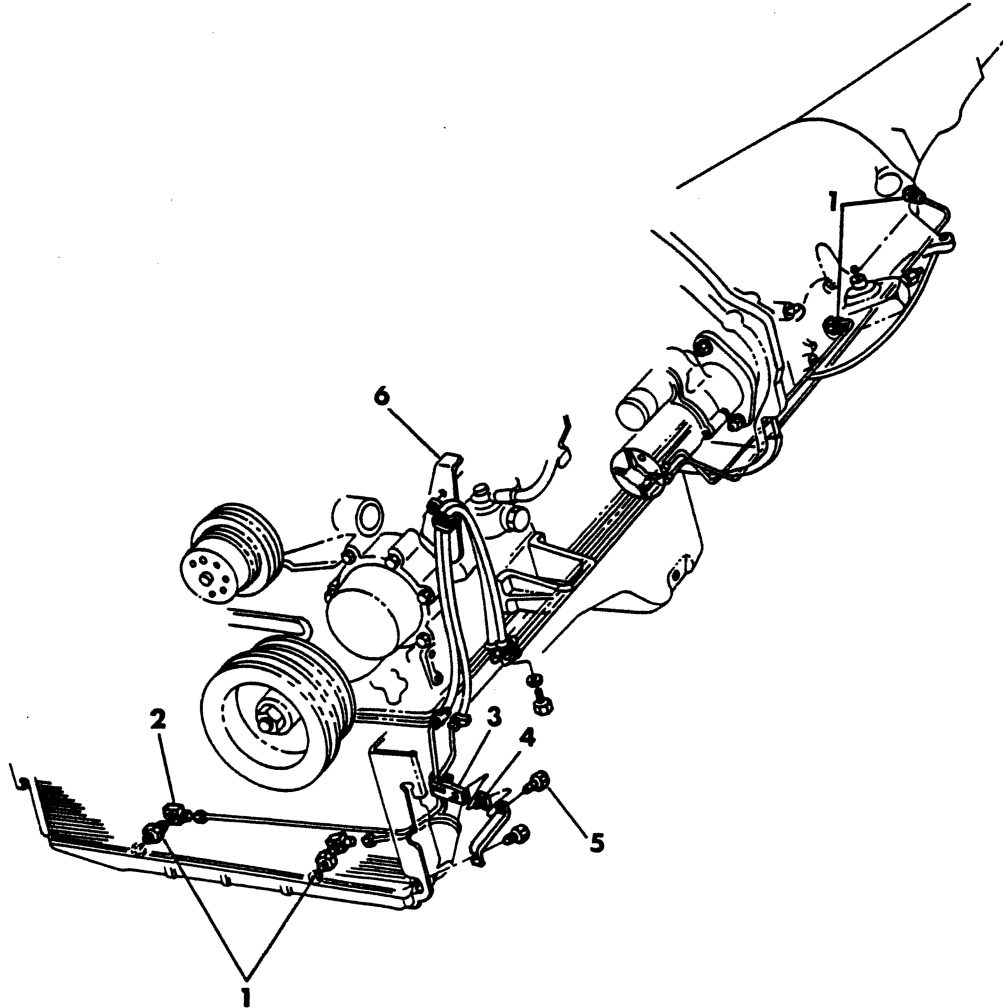
CONTROL, IDLE (MMC DIESEL)

1	4114 201			BRACKET
2	4114 200			CONTROL, Vernier Idle
3	4114 207			LEVER
4	3489 636			BOLT, Shoulder
5	6025 004			NUT
6	4114 206			LEVER & BRACKET

LIGHT	A = All Sport Utility (Ramcharger).	B = All Compact Models.	D = Conventional Cab.
DUTY	AD = 2 Wheel Drive Only (Ramcharger).	CB-MB = Compact Front Section Only.	W = Conventional Cab 4 Wheel Drive.
CODES:	AW = 4 Wheel Drive Only (Ramcharger).	P = Forward Control Chassis.	M = Motor Home.
MEDIUM-HEAVY CODES: XNT = Low Cab Forward. D = Conventional Cab. S = School Bus. W = 4-Wheel Drive.			
AR = Use as Required	# = New Part Number	Printed in U.S.A.	June, 1982

COOLER LINES, TRANS.OIL (MMC DIESEL)

8356 2800A



ITEM	PART NUMBER	QTY	MODEL	DESCRIPTION
COOLER LINES,TRANS.OIL (MMC DIESEL)				
1	118 749	4		CONNECTORS
2	137 422	2		ELBOW
3	3404 625			CLIP,Tube
4	152 449			U-NUT
6	ME00 7283	1		BRACKET 1978
	4112 868	1		1979-80

LIGHT	A = All Sport Utility (Ramcharger).	B = All Compact Models.	D = Conventional Cab.
DUTY	AD = 2 Wheel Drive Only (Ramcharger).	CB-MB = Compact Front Section Only.	W = Conventional Cab 4 Wheel Drive.
CODES:	AW = 4 Wheel Drive Only (Ramcharger).	P = Forward Control Chassis.	M = Motor Home.

MEDIUM-HEAVY CODES: XNT = Low Cab Forward. D = Conventional Cab. S = School Bus. W = 4-Wheel Drive.

AR=Use as Required

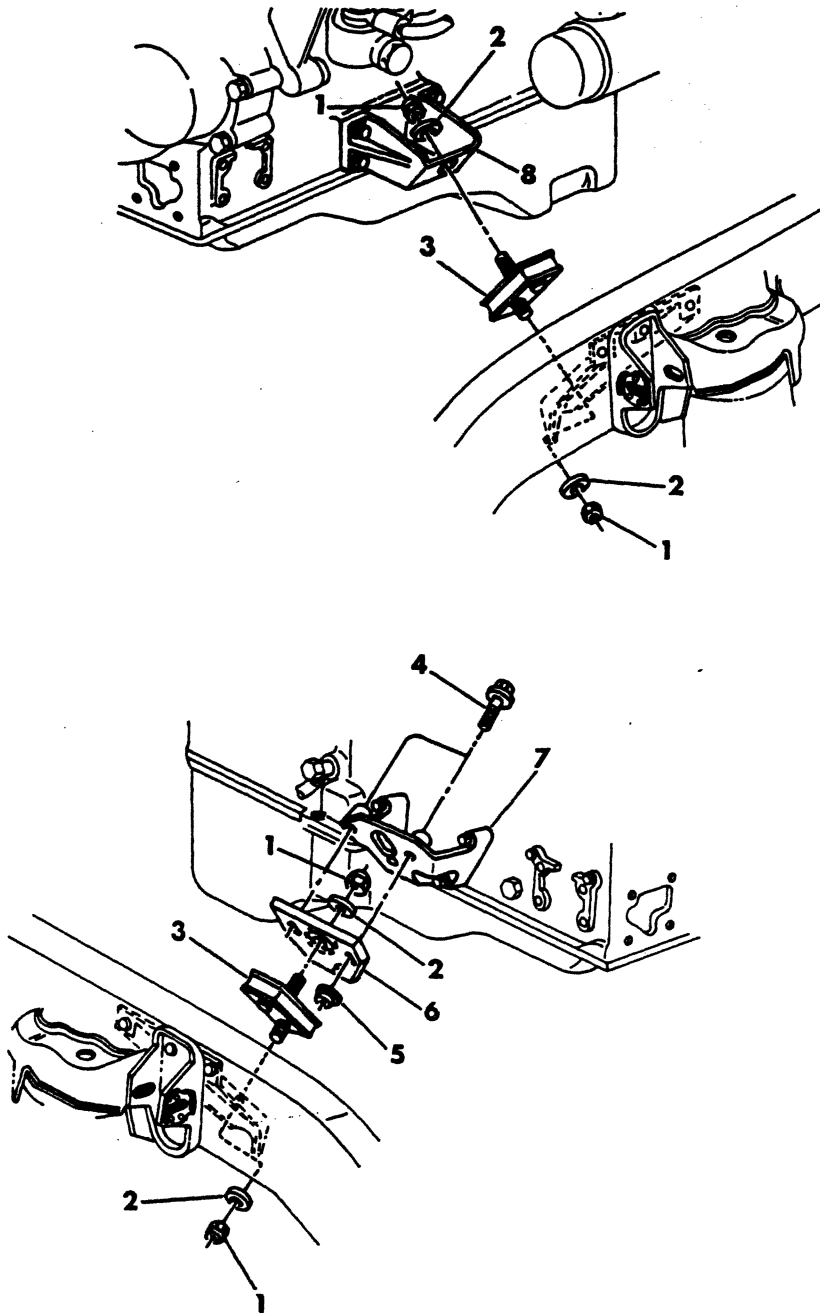
=New Part Number

Printed in U.S.A.

June, 1982

MOUNTING,ENGINE FRONT (MMC DIESEL)

8356 2900

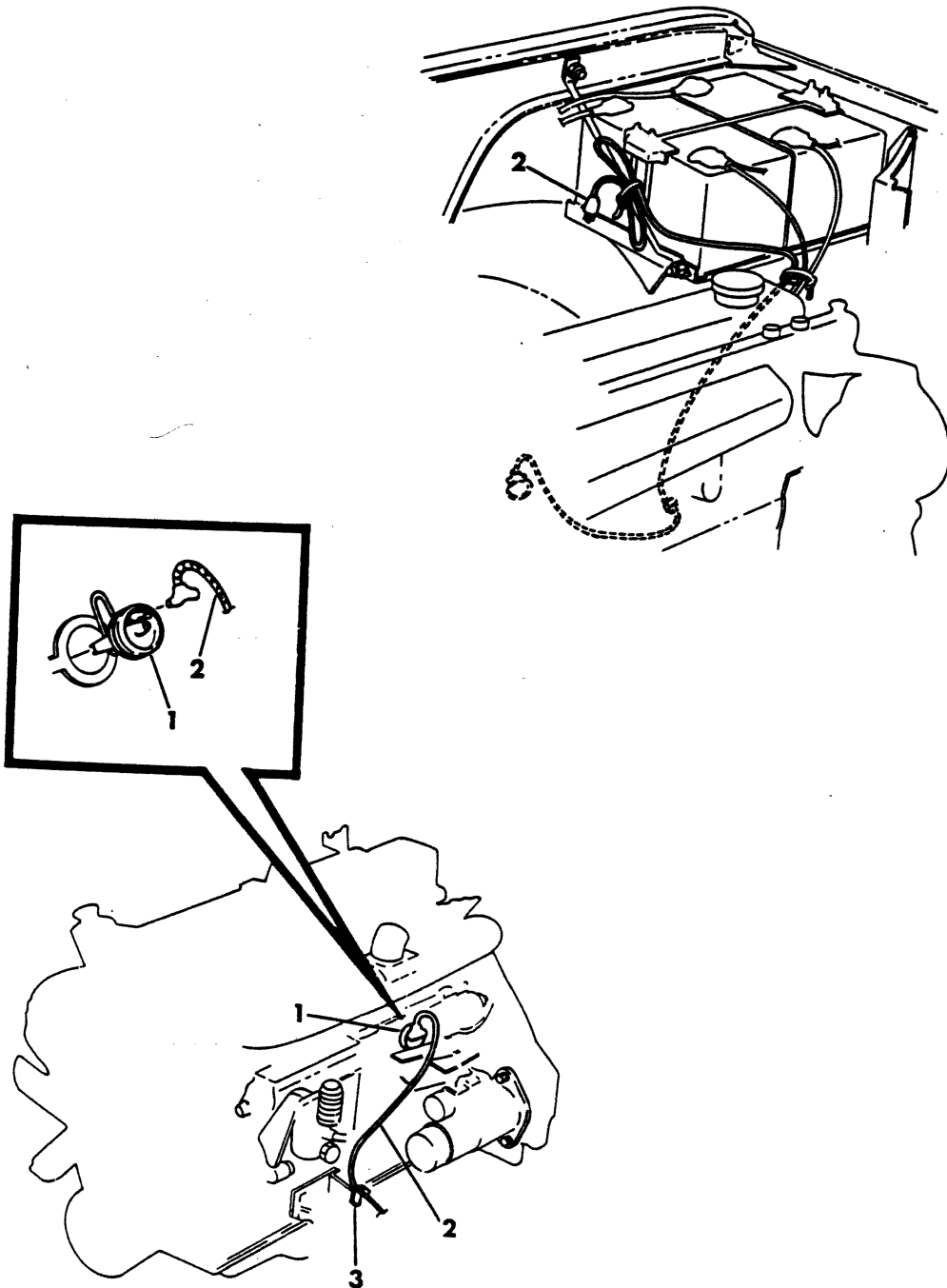


ITEM	PART NUMBER	QTY	MODEL	DESCRIPTION
MOUNTING,ENGINE FRONT (MMC DIESEL)				
1	152 348	4		NUT,Lock
2	2128 774	4		WASHER,Plain
3	4039 800	2		INSULATOR, 1978
	4088 033	2		1979
4	6031 274	2		BOLT
5	152 476	2		NUT,Lock
6	4112 256			SPACER 1978
	4039 592			1979-80
7	ME00 7219	1		BRACKET,Mtg.Left
8	ME00 7220	1		BRACKET,Mtg.Right

LIGHT	A = All Sport Utility (Ramcharger).	B = All Compact Models.	D = Conventional Cab.
DUTY	AD = 2 Wheel Drive Only (Ramcharger).	CB-MB = Compact Front Section Only.	W = Conventional Cab 4 Wheel Drive.
CODES:	AW = 4 Wheel Drive Only (Ramcharger).	P = Forward Control Chassis.	M = Motor Home.
MEDIUM-HEAVY CODES: XNT = Low Cab Forward. D = Conventional Cab. S = School Bus. W = 4-Wheel Drive.			
AR=Use as Required	# =New Part Number	Printed in U.S.A.	June, 1982

HEATER,ENGINE BLOCK (MMC DIESEL)

8356 3000



ITEM	PART NUMBER	QTY	MODEL	DESCRIPTION
------	-------------	-----	-------	-------------

HEATER,ENGINE BLOCK (MMC DIESEL)

1	4114 210			HEATER,Engine Block
2	3614 282			CORD,Engine Block
3	6015 412			CLIP
4	6015 756	2		STRAP

LIGHT	A = All Sport Utility (Ramcharger).	B = All Compact Models.	D = Conventional Cab.
DUTY	AD = 2 Wheel Drive Only (Ramcharger).	CB-MB = Compact Front Section Only.	W = Conventional Cab 4 Wheel Drive.
CODES:	AW = 4 Wheel Drive Only (Ramcharger).	P = Forward Control Chassis.	M = Motor Home.
MEDIUM-HEAVY CODES: XNT = Low Cab Forward. D = Conventional Cab. S = School Bus. W = 4-Wheel Drive.			
AR=Use as Required		#=New Part Number	Printed in U.S.A. June, 1982

1978-81 LIGHT DUTY TRUCK PARTS CATALOG

ENGINE, SIX CYLINDER