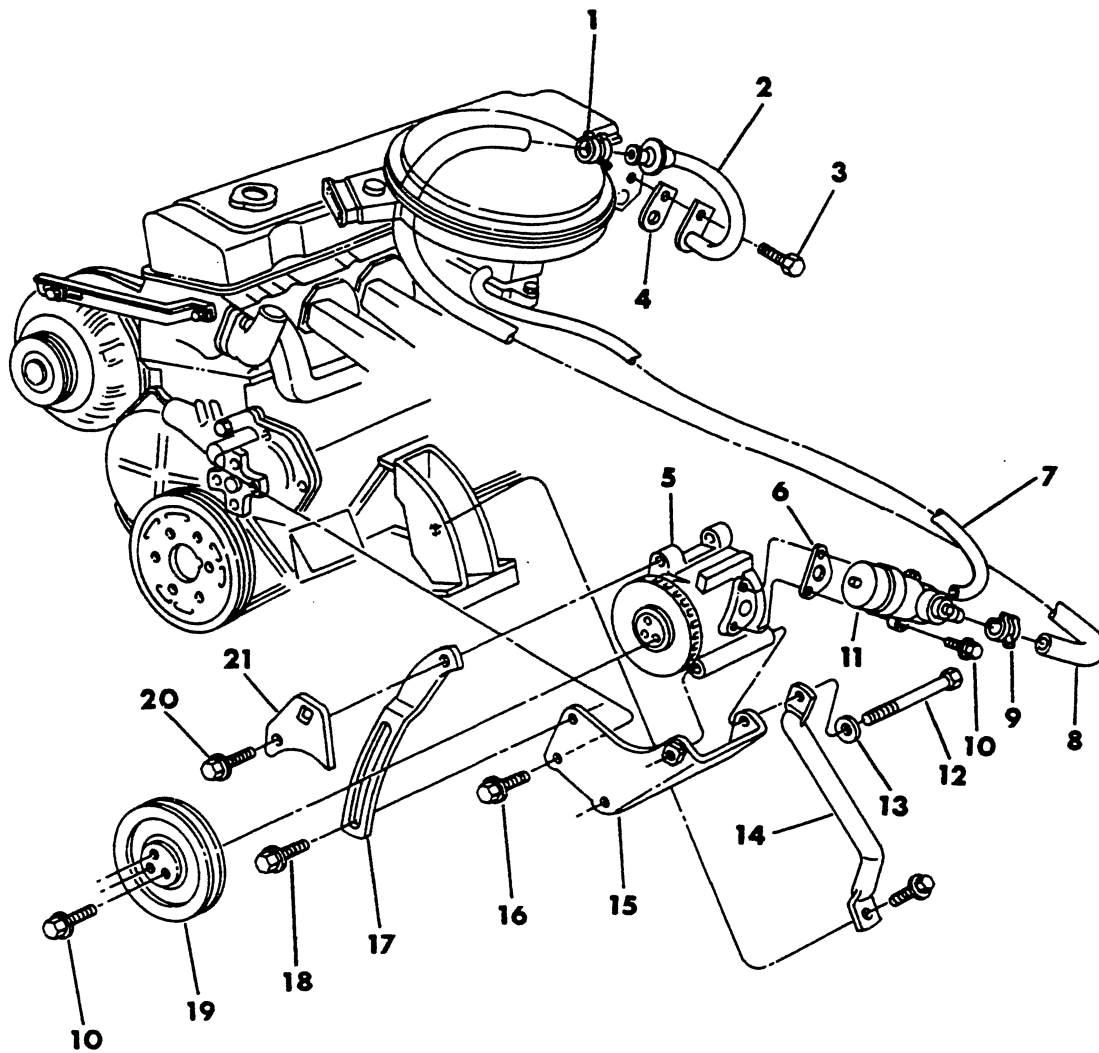


GROUP 25 - EMISSION SYSTEMS

AIR PUMP 225 ENGINE 1978 B1,2,3-D1,2	Fig. 25-20
AIR PUMP 225 ENGINE 1979-80-81	Fig. 25-25
AIR PUMP 318 - 360 ENGINE B-CB-MB	Fig. 25-50
AIR PUMP 318 - 360 ENGINE A-D-W w/o SNOWPLOW	Fig. 25-60
AIR PUMP 318 - 360 ENGINE W1,2-AW1 w/SNOWPLOW	Fig. 25-65
AIR PUMP 360 ENGINE MOTOR HOME 1978-79	Fig. 25-80
AIR PUMP 360 ENGINE MOTOR HOME 1980	Fig. 25-83
AIR PUMP & DIVERTER VALVE 446 ENGINE MOTOR HOME	Fig. 25-86
AIR PUMP TUBING 318 - 360 ENGINE B-CB-MB 1979-80	Fig. 25-55
AIR PUMP TUBING 318 - 360 ENGINE B-CB-MB 1981	Fig. 25-57
AIR PUMP TUBING 318 - 360 ENGINE A-D-W w/o SNOWPLOW 1979-80	Fig. 25-61
AIR PUMP TUBING 318 - 360 ENGINE A-D-W w/o SNOWPLOW 1981	Fig. 25-63
AIR PUMP TUBING w/AIR SWITCHING VALVE 225 ENGINE	Fig. 25-30
AIR PUMP TUBING w/o AIR SWITCHING VALVE 225 ENGINE	Fig. 25-40
ASPIRATOR	Fig. 25-90
EMISSION CONTROLS & SWITCHES	Fig. 25-700
EMISSION WIRING	Fig. 25-905
EXHAUST GAS RECIRCULATION SYSTEM (EGR) 225 ENGINE	Fig. 25-425
EXHAUST GAS RECIRCULATION SYSTEM (EGR) 318 - 360 ENGINE	Fig. 25-450
EXHAUST GAS RECIRCULATION SYSTEM (EGR) 400 - 440 ENGINE	Fig. 25-475
EXHAUST GAS RECIRCULATION SYSTEM (EGR) 360 - 440 ENGINE MOTOR HOME	Fig. 25-477
EXHAUST GAS RECIRCULATION SYSTEM (EGR) 446 ENGINE	Fig. 25-480
OSAC SPARK ADVANCE SYSTEM & TIDC VALVE	Fig. 25-800
VACUUM SUPPLY CONNECTORS	Fig. 25-520
VAPOR CANISTER - DUAL B-CB-MB	Fig. 25-530
VAPOR CANISTER - DUAL A-D-W	Fig. 25-560
VAPOR CANISTER - DUAL & TRIPLE MOTOR HOME	Fig. 25-575
VAPOR CANISTER - SINGLE B-CB-MB	Fig. 25-525
VAPOR CANISTER - SINGLE A-D-W	Fig. 25-550

8325 020

AIR PUMP
225 ENGINE 1978
B1,2,3-D1,2



ITEM	PART NUMBER	QTY	MODEL	DESCRIPTION
AIR PUMP				
225 ENGINE 1978				
B1,2,3-D1,2				
1	2448 761	1		CLAMP
2	4027 269	1		TUBE, Air Inj. & Exh. Check Valve
3		1		SCREW (not serviced)
4	3671 142	1		GASKET, Air Injection Tube
5	4131 105	1		PUMP, Air
6	3671 084	1		GASKET, Diverter Valve
7	3744 936	1		HOSE, Diverter Valve Vacuum Control
8	4039 734	1		HOSE, Diverter Valve to Exh. Check Valve
9	3870 465	1		CLAMP
10	181 063	AR		SCREW
11	3830 959	1		VALVE, Diverter
12	9421 897	1		BOLT
13		1		WASHER, Coned (not serviced)
14	3637 703	1		SUPPORT, Air Pump Mtg. Brkt.
15	3671 481	1		BRACKET, Air Pump Mounting
16	6022 266	2		SCREW
17	3671 478	1		STRAP, Air Pump Adjust
18	6029 799	1		SCREW
19	4071 720	1		PULLEY, Air Pump
20	9416 171	1		SCREW
21	3512 308	1		PLATE, Air Pump Adjust

LIGHT	A = All Sport Utility (Ramcharger).	B = All Compact Models.	D = Conventional Cab.
DUTY	AD = 2 Wheel Drive Only (Ramcharger).	CB-MB = Compact Front Section Only.	W = Conventional Cab 4 Wheel Drive.
CODES:	AW = 4 Wheel Drive Only (Ramcharger).	P = Forward Control Chassis.	M = Motor Home.

MEDIUM-HEAVY CODES: XNT = Low Cab Forward. D = Conventional Cab. S = School Bus. W = 4-Wheel Drive.

AR=Use as Required

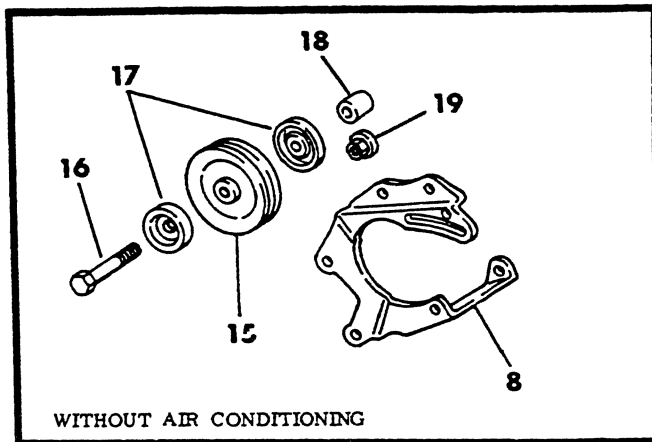
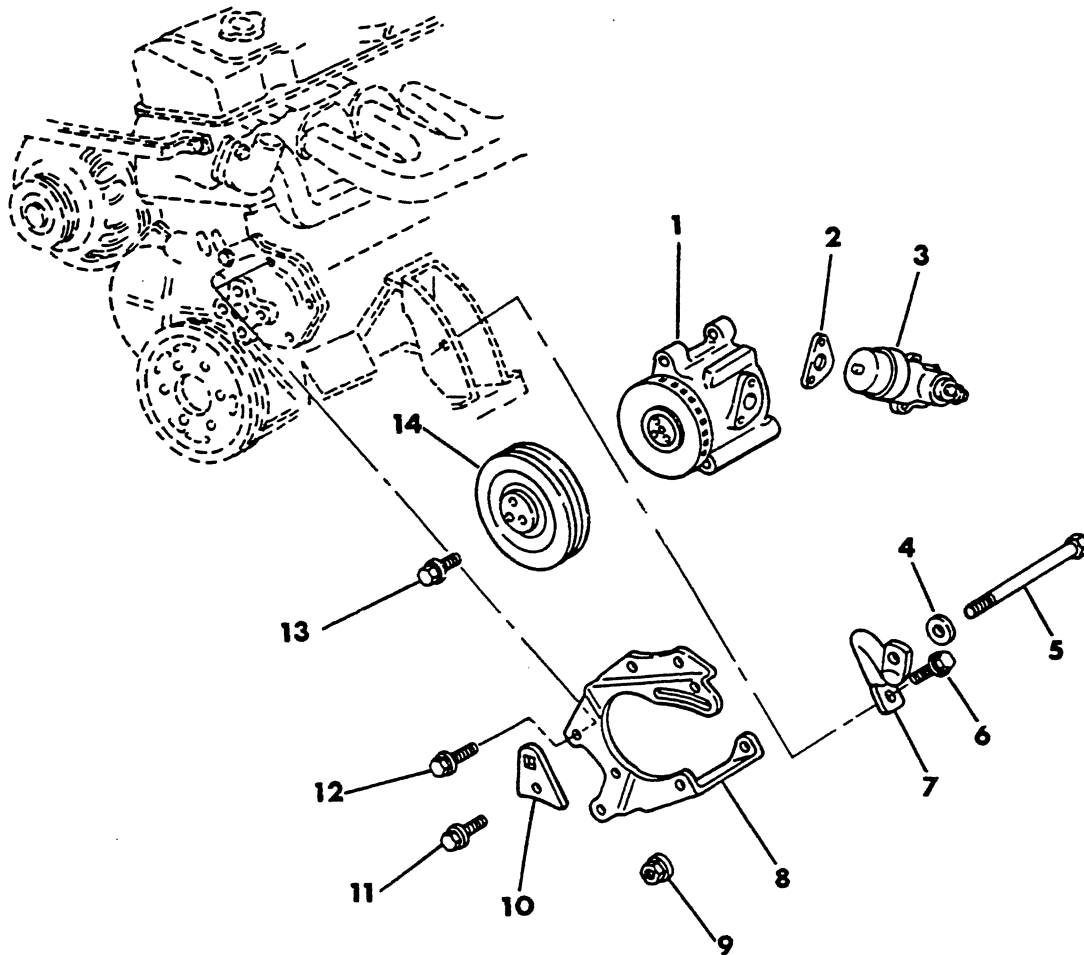
= New Part Number

Printed in U.S.A.

June, 1982

AIR PUMP 225 ENGINE 1979-80-81

8325 025B



ITEM	PART NUMBER	QTY	MODEL	DESCRIPTION
AIR PUMP				
225 ENGINE				
1979-80-81				
1				PUMP, Air
	4173 136	1		1979
	4179 454	1	B1-D2-W1-AD1	1980
	5203 782	1	B2-D1	1980 w/Calif.
	4179 454	1	B2-D1	1980 w/o Calif.
	4179 926	1		1981 Up to 5-25-81
	4268 963	1		After 5-25-81
2				GASKET, Diverter Valve
	3671 084	1		1979
	4179 700	1		1980-81
3				VALVE, Diverter
	3830 959	1		1979
	4179 720	1		1980
	4179 720	1	B1,2-D1	1981 w/Calif.
	4268 575	1	B1,2-D1	1981 w/o Calif.
	4268 575	1	D2-W1	1981
4		1		WASHER (not serviced)
5		1		BOLT (not serviced)
6		1		SCREW (not serviced)
7				SUPPORT, Air Pump to Engine Mount
	4116 459	1		w/Calif.
	4088 509	1		w/o Calif.
8				BRACKET, Air Pump Mtg.
	4089 595	1		1979
	4164 192	1	B1-D2-W1-AD1	1980
	4213 315	1	B2-D1	1980 w/Calif.
	4164 192	1	B2-D1	1980 w/o Calif.
	4213 315	1		1981 Up to 10-1-80
	4089 595	1		After 10-1-80
9	6025 020	1		NUT
10	4116 953	1		PLATE, Air Pump Adjust
11	9416 171	1		SCREW
12	6022 266	3		SCREW
13	181 063	3		SCREW
14				PULLEY, Air Pump
	3671 030	1		1978-79-80
	3671 030	1	B1,2-D1	1981 w/Calif. Up to 10-27-80
	4268 416	1	B1,2-D1	After 10-27-80
	3870 088	1	B1,2-D1	1981 w/o Calif. Up to 8-18-80
	5214 754	1	B1,2-D1	After 8-18-80
	3870 088	1	D2-W1	1981 Up to 8-18-80
	5214 754	1	D2-W1	After 8-18-80
15	3830 197	1		PULLEY, Air Pump Idler
16	6031 723	1		BOLT
17	5214 065	2		SHIELD, Air Pump Idler Pulley
18	6031 724	1		SPACER, Idler Pulley
19	6025 020	1		NUT

LIGHT A = All Sport Utility (Ramcharger).

B = All Compact Models.

D = Conventional Cab.

DUTY AD = 2 Wheel Drive Only (Ramcharger).

CB-MB = Compact Front Section Only.

W = Conventional Cab 4 Wheel Drive.

CODES: AW = 4 Wheel Drive Only (Ramcharger).

P = Forward Control Chassis.

M = Motor Home.

MEDIUM-HEAVY CODES: XNT = Low Cab Forward. D = Conventional Cab. S = School Bus. W = 4-Wheel Drive.

AR=Use as Required

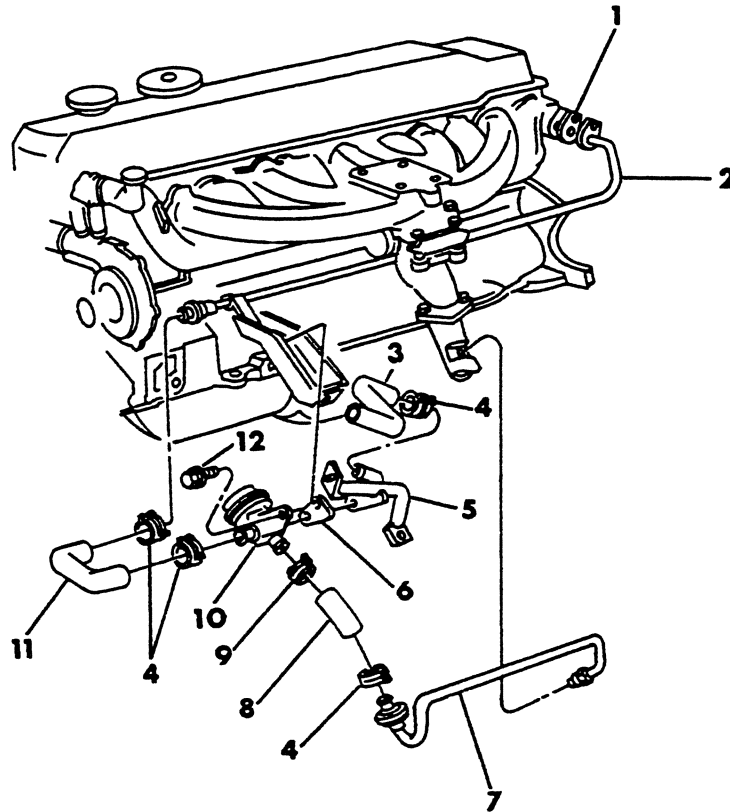
=New Part Number

Printed in U.S.A.

June, 1982

AIR PUMP TUBING w/AIR SWITCHING VALVE
225 ENGINE

8325 030A



ITEM	PART NUMBER	QTY	MODEL	DESCRIPTION
AIR PUMP TUBING w/AIR SWITCHING VALVE 225 ENGINE				
1	3671 142	1		GASKET, Air Injection Tube
	3751 249	1		COVER, Exhaust Manifold
2				TUBE, Air Injection
	4027 269	1		1978
	4117 007	1		1979-80-81
3				HOSE, Diverter Valve to Air Switching Valve
	4116 461	1		1979
	4116 461	1		1980-81 w/Calif.
	4164 502	1		1980-81 w/o Calif.
4	2448 761	4		CLAMP
5	4116 459	1		BRACKET, Air Switching Valve
6	3671 084	1		GASKET, Air Switching Valve
7				TUBE, Air Injection to Exhaust Pipe
	4116 912	1	D2-W1-AD1	1979
	4116 913	1	B1,2-CB3	1979
	4210 630	1		1980-81 w/Mini-Ox
8	4116 460	1		HOSE, Air Switching Valve to Exhaust Pipe
9	3870 465	2		CLAMP
10	4041 397	1		VALVE, Air Switching 1979-80
	4095 480	1		1981
11	4116 462	1		HOSE, Air Switching Valve to Injection Tube
12	181 065	1		SCREW

LIGHT DUTY CODES: A = All Sport Utility (Ramcharger). B = All Compact Models. D = Conventional Cab.
AD = 2 Wheel Drive Only (Ramcharger). CB-MB = Compact Front Section Only. W = Conventional Cab 4 Wheel Drive.
AW = 4 Wheel Drive Only (Ramcharger). P = Forward Control Chassis. M = Motor Home.

MEDIUM-HEAVY CODES: XNT = Low Cab Forward. D = Conventional Cab. S = School Bus. W = 4-Wheel Drive.

AR=Use as Required

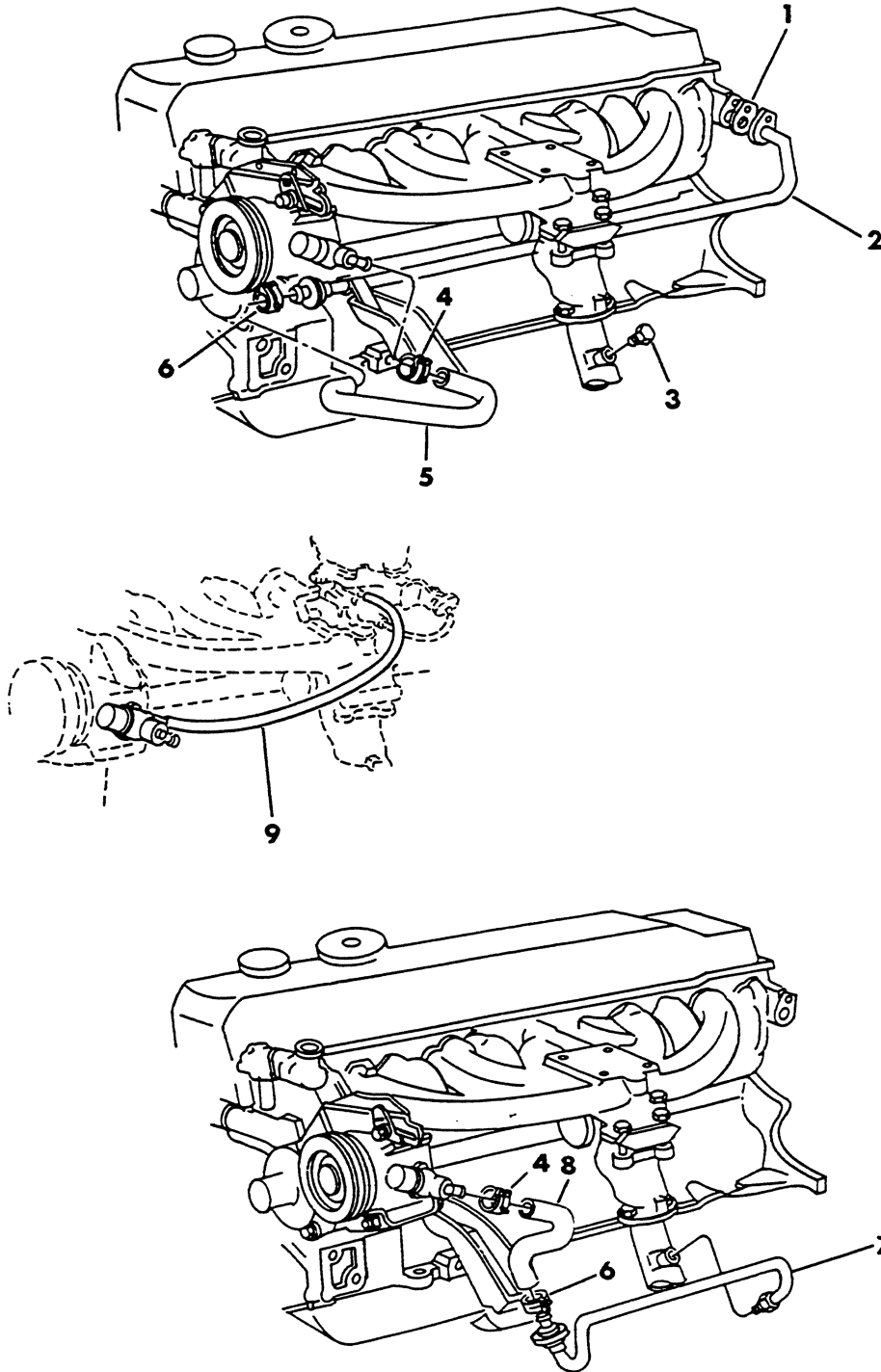
#=New Part Number

Printed in U.S.A.

June, 1982

8325 040

AIR PUMP TUBING w/o AIR SWITCHING VALVE
225 ENGINE

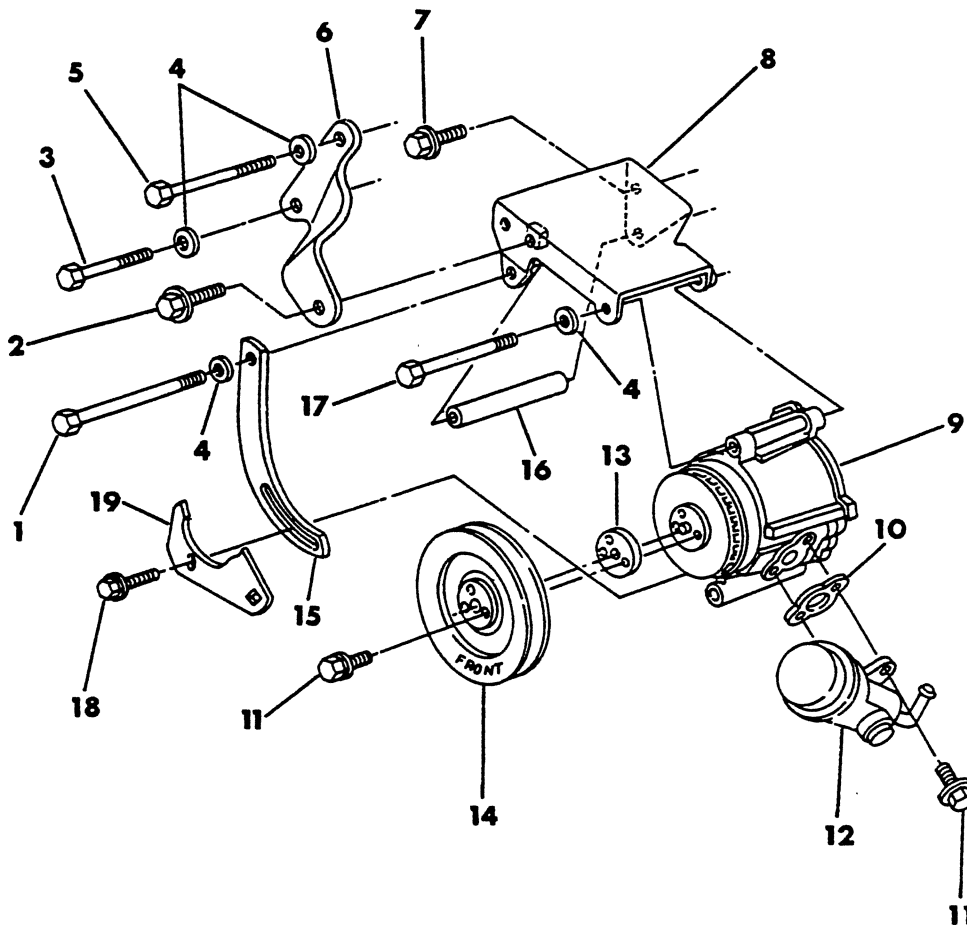


ITEM	PART NUMBER	QTY	MODEL	DESCRIPTION
AIR PUMP TUBING w/o AIR SWITCHING VALVE 225 ENGINE				
1	3671 142	1		GASKET, Air Injection Tube
	3751 249	2		COVER, Exhaust Manifold
2				TUBE, Air Injection
	4027 269	1		1978
	4117 007	1		1979-80-81
3	4116 930	1		PLUG
4	2448 761	AR		CLAMP
5	4117 006	1		HOSE, Diverter Valve to Exhaust Check Valve
6	3870 465	AR		CLAMP
7	4116 913	1	B1,2-CB3	TUBE, Air Injection to Exhaust Pipe
	4116 912	1	D2-W1-AD1	
8	4116 463	1		HOSE, Diverter Valve to Exhaust Check Valve
9	3477 936	1		HOSE, Diverter Valve Vacuum Control

LIGHT	A = All Sport Utility (Ramcharger).	B = All Compact Models.	D = Conventional Cab.
DUTY	AD = 2 Wheel Drive Only (Ramcharger).	CB-MB = Compact Front Section Only.	W = Conventional Cab 4 Wheel Drive.
CODES:	AW = 4 Wheel Drive Only (Ramcharger).	P = Forward Control Chassis.	M = Motor Home.
MEDIUM-HEAVY CODES: XNT = Low Cab Forward. D = Conventional Cab. S = School Bus. W = 4-Wheel Drive.			
AR=Use as Required	# =New Part Number	Printed in U.S.A.	June, 1982

8325 050A

AIR PUMP
318 - 360 ENGINE
B-CB-MB



ITEM	PART NUMBER	QTY	MODEL	DESCRIPTION
AIR PUMP				
318 - 360 ENGINE				
B-CB-MB				
1	9418 276	1		SCREW
2	6029 799	1		SCREW
3	2129 379	1		SCREW
4		1		WASHER (not serviced)
5	6028 166	1		SCREW
6	3822 874	1		SUPPORT, Air Pump Mtg. Bracket
7	6029 713	1		SCREW
8				BRACKET, Air Pump Mounting
	4088 850	1		1978-79
	4210 560	1		1980-81
9				PUMP, Air
	3870 305	1		1978
	4131 198	1		1979
	4186 318	1		1980
	4186 318	1		1981 Up to 5-4-81
	4268 973	1		After 5-4-81
10				GASKET, Diverter Valve
	3671 084	1		1978-79
	4179 700	1		1980-81
11	181 063	AR		SCREW
12				VALVE, Diverter
	3830 996	1		1978-79
	4179 741	1		1980-81
	4241 874	1	B1,2,3	VALVE, Air Switch & Relief 318 & 360 Eng. 4 Bbl. w/Calif. 1981
13	4116 954	1		SPACER, Air Pump Pulley 360-1 Eng. 1979
14				PULLEY, Air Pump
	3698 944	1		w/Air Cond. 1978
	3870 088	1		w/o Air Cond. LDC & MDC 1978
	3698 944	1		w/o Air Cond. HDC 1978
	3698 944	1		w/Air Cond. 2 Bbl. Carb. 1979
	3870 088	1		w/o Air Cond. 2 Bbl. Carb. 1979
	4027 343	1		4 Bbl. Carb. 1979
	3870 088	1		w/Cat. Conv. except HDC 1980-81
	3671 345	1		w/Cat. Conv. w/HDC 1980-81
	3671 309	1	CB-MB4	360-3 Eng.
15	3638 864	1		STRAP, Air Pump Adjust
16				SPACER
	3735 269	1		1978
	4112 979	1		1979
	4112 979	1		1980-81 w/Man. Trans.
	4213 291	1		1980-81 w/Auto. Trans.
17		1		BOLT, 3/8 - 16 x 4.75 (not serviced)
18	9416 171	1		SCREW
19	3823 444	1		PLATE, Air Pump Adjust

LIGHT A = All Sport Utility (Ramcharger).

B = All Compact Models.

D = Conventional Cab.

DUTY AD = 2 Wheel Drive Only (Ramcharger).

CB-MB = Compact Front Section Only.

W = Conventional Cab 4 Wheel Drive.

CODES: AW = 4 Wheel Drive Only (Ramcharger).

P = Forward Control Chassis.

M = Motor Home.

MEDIUM-HEAVY CODES: XNT = Low Cab Forward. D = Conventional Cab. S = School Bus. W = 4-Wheel Drive.

AR=Use as Required

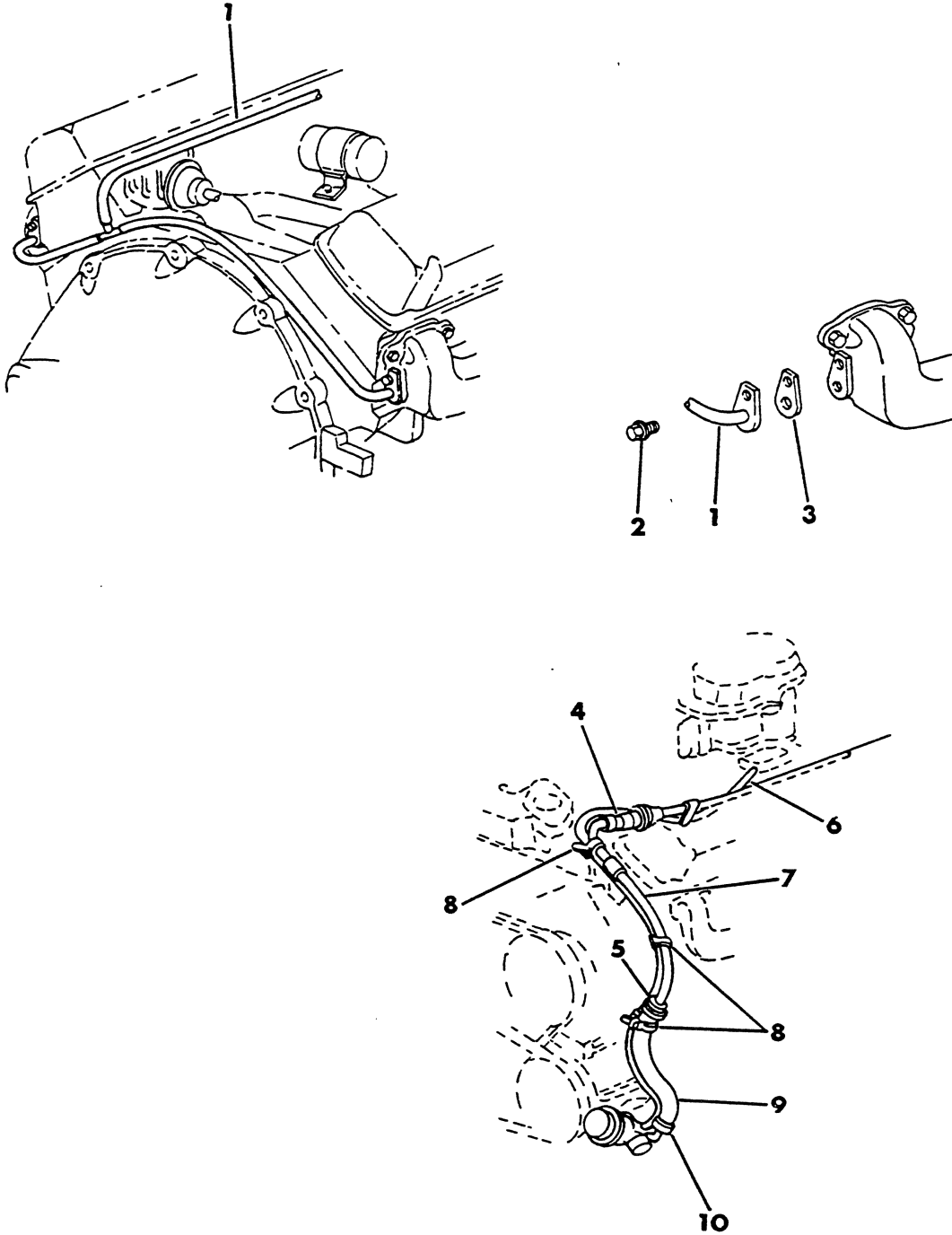
= New Part Number

Printed in U.S.A.

June, 1982

8325 055

AIR PUMP TUBING
318 - 360 ENGINE
B-CB-MB 1979-80



ITEM	PART NUMBER	QTY	MODEL	DESCRIPTION
AIR PUMP TUBING				
318 - 360 ENGINE				
B-CB-MB 1979-80				
1	4086 676	1		VALVE, Crossover Tube & Check
	4167 429	1		TUBE, Downstream Air Injection 1980-81
2		2		SCREW (not serviced)
3	3671 142	2		GASKET, Air Injection Tube
	3751 249	2		COVER, Exh. Manifold Air Inj.
4	3744 913	1		HOSE, Diverter Valve to Exhaust Check Valve
5	2448 761	3		CLAMP
6	3744 936	1		HOSE, Diverter Valve Control
7	4031 509	1		TUBE, Diverter Valve to Exhaust Check Valve
8		3		STRAP (not serviced)
9				HOSE, Diverter Valve to Exhaust Check Valve
	4031 512	1		1978-79
	4210 721	1		1980
10	3870 465	1		CLAMP

LIGHT	A = All Sport Utility (Ramcharger).	B = All Compact Models.	D = Conventional Cab.
DUTY	AD = 2 Wheel Drive Only (Ramcharger).	CB-MB = Compact Front Section Only.	W = Conventional Cab 4 Wheel Drive.
CODES:	AW = 4 Wheel Drive Only (Ramcharger).	P = Forward Control Chassis.	M = Motor Home.
MEDIUM-HEAVY CODES: XNT = Low Cab Forward. D = Conventional Cab. S = School Bus. W = 4-Wheel Drive.			

AR=Use as Required

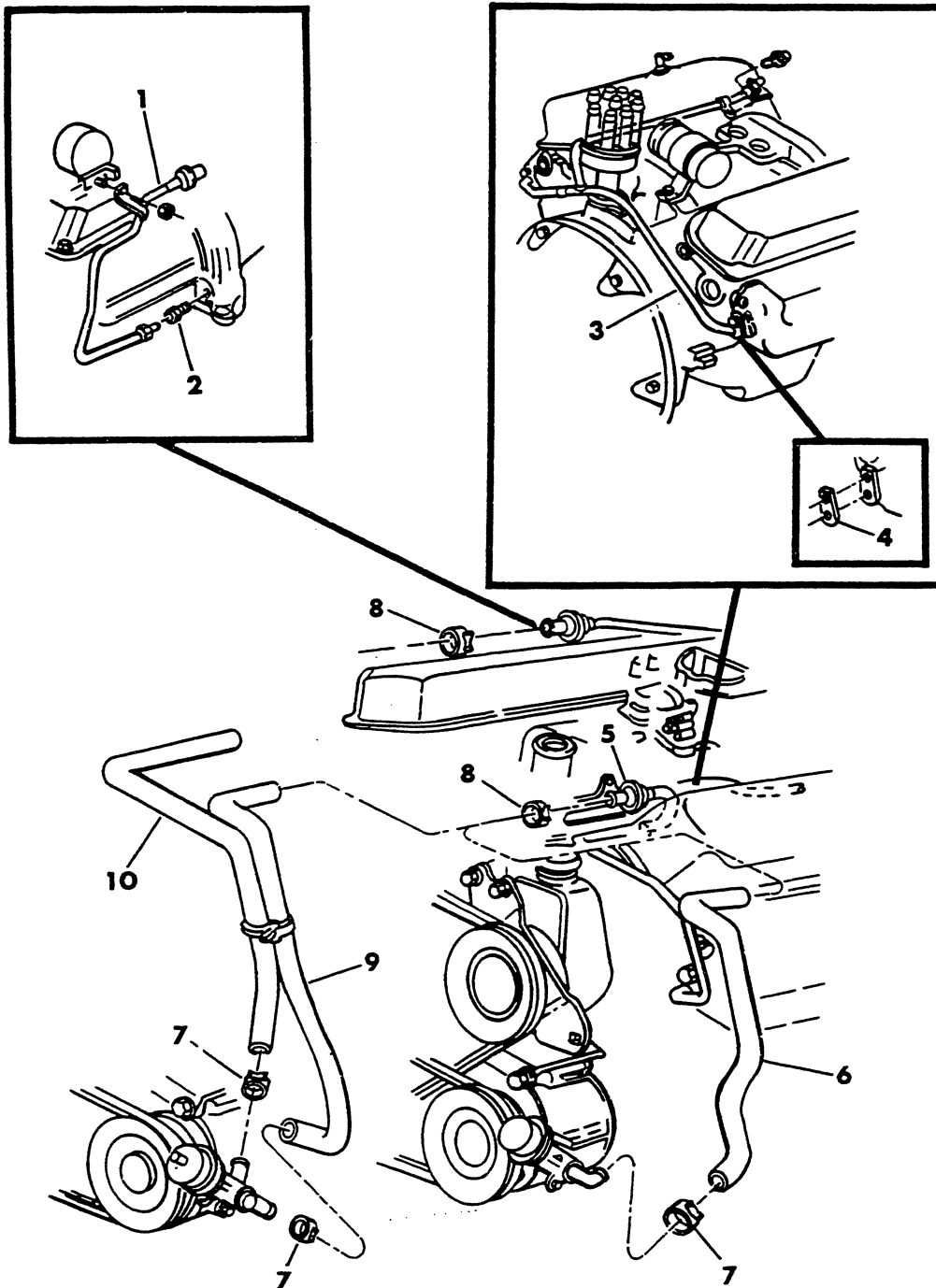
=New Part Number

Printed in U.S.A.

June, 1982

8325 057

AIR PUMP TUBING
318 - 360 ENGINE
B-CB-MB 1981



ITEM	PART NUMBER	QTY	MODEL	DESCRIPTION
AIR PUMP TUBING				
318 - 360 ENGINE				
B-CB-MB 1981				
1	4210 202	1		TUBE, Exhaust Manifold Inj.
2	6031 726	1		CONNECTOR
3	4086 676	1		TUBE, Crossover Tube and Check w/o Calif. exc. LDC
4	3671 142	AR		GASKET, Air Inj. Tube
	3751 249	AR		COVER, Exh. Manifold Air Inj.
5	4167 429	1		TUBE, Downstream Air Inj. w/o Calif. LDC
6	4210 721	1		HOSE, Diverter Valve to Exhaust Check Valve w/Calif. exc. LDC
7	3870 465	AR		CLAMP
8	2448 761	AR		CLAMP
9	4210 200	1		HOSE, Air Switch & Relief Valve to Crossover Tube w/Calif. LDC
10	4210 203	1		HOSE, Air Switch & Relief Valve to Exh. Man. Inj. Tube w/Calif. LDC

LIGHT DUTY CODES:	A = All Sport Utility (Ramcharger).	B = All Compact Models.	D = Conventional Cab.
	AD = 2 Wheel Drive Only (Ramcharger).	CB-MB = Compact Front Section Only.	W = Conventional Cab 4 Wheel Drive.
	AW = 4 Wheel Drive Only (Ramcharger).	P = Forward Control Chassis.	M = Motor Home.

MEDIUM-HEAVY CODES: XNT = Low Cab Forward. D = Conventional Cab. S = School Bus. W = 4-Wheel Drive.

AR=Use as Required

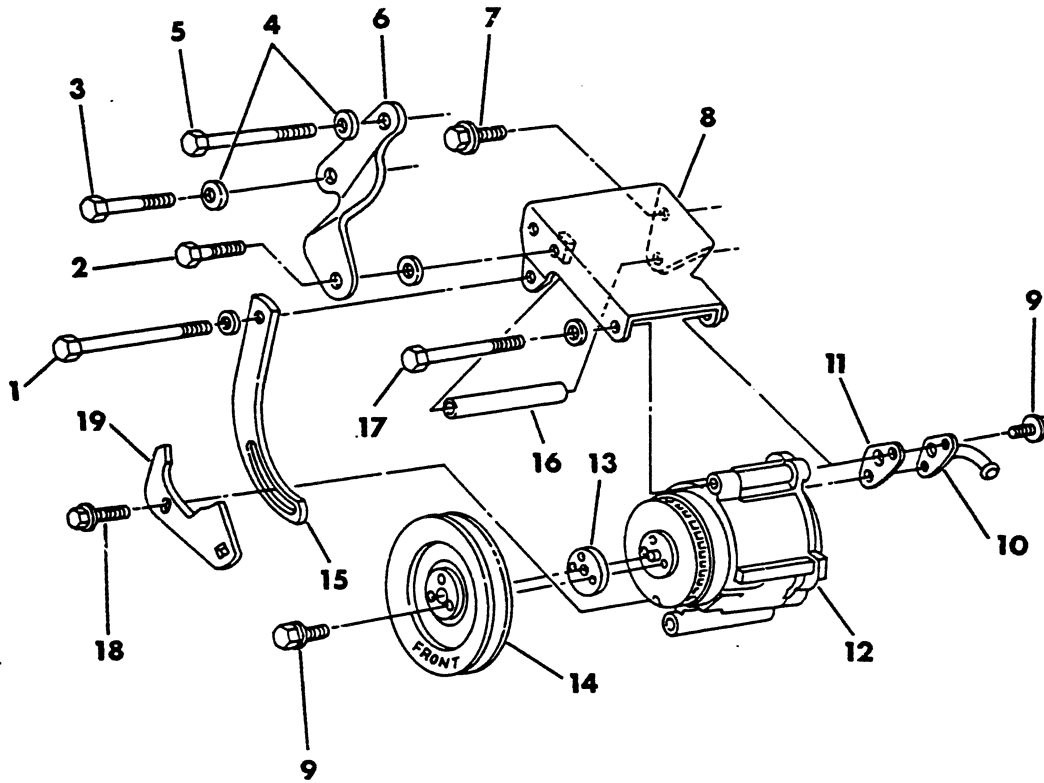
=New Part Number

Printed in U.S.A.

June, 1982

8325 060A

AIR PUMP
318 - 360 ENGINE
A-D-W w/o SNOWFLOW



ITEM	PART NUMBER	QTY	MODEL	DESCRIPTION
AIR PUMP				
318 - 360 ENGINE				
A-D-W w/o SNOWFLOW				
1	9418 276	1		SCREW
2	6029 799	1		SCREW
3	2129 379	1		SCREW
4		1		WASHER (not serviced)
5	6028 166	1		SCREW
6	3822 874	1		SUPPORT, Air Pump Bracket
7	6029 713	1		SCREW
8				BRACKET, Air Pump Mounting
	4088 850	1		1978-79
	4210 560	1		1980-81
9	181 063	AR		SCREW
10				ELBOW, Adapter
	3733 202	1		1978-79
	4210 719	1		1980
	4213 674	1		1981
11				GASKET, Diverter Valve
	3671 084	1		1978-79
	4179 700	2		1980-81
12				PUMP, Air
	3837 646	1		1978-79
	4186 319	1		1980
	4186 319	1		1981 Up to 5-18-81
	4268 961	1		After 5-18-81
13	4116 954	1		SPACER, Air Pump Pulley 360-1 Eng.
14				PULLEY, Air Pump
	3698 944	1		w/Air Cond. 1978
	3870 088	1		w/o Air Cond. LDC & MDC 1978
	3698 944	1		w/o Air Cond. HDC 1978
	3698 944	1		w/Air Cond. 2 Bbl. Carb. 1979
	3870 088	1		w/o Air Cond. 2 Bbl. Carb. 1979
	4027 343	1		4 Bbl. Carb. 1979
	3780 088	1		w/Cat. Conv. except HDC 1980-81
	3671 345	1		w/Cat. Conv. w/HDC 1980-81
15	3638 864	1		STRAP, Air Pump Adjust
16				SPACER
	3735 269	1		1978-79
	4112 979	1		1980-81 w/Man. Trans.
	4213 291	1		1980-81 w/Auto. Trans.
17		1		SCREW, 3/8 - 16 x 4.75 (not serviced)
18	9416 171	1		SCREW
19	3823 444	1		PLATE, Air Pump Adjust
NOTE: The following part is not illustrated.	4213 674	1		ELBOW, Air Pump Outlet Hose 1981

LIGHT A = All Sport Utility (Ramcharger).

B = All Compact Models.

D = Conventional Cab.

DUTY AD = 2 Wheel Drive Only (Ramcharger).

CB-MB = Compact Front Section Only.

W = Conventional Cab 4 Wheel Drive.

CODES: AW = 4 Wheel Drive Only (Ramcharger).

P = Forward Control Chassis.

M = Motor Home.

MEDIUM-HEAVY CODES: XNT = Low Cab Forward. D = Conventional Cab. S = School Bus. W = 4-Wheel Drive.

AR=Use as Required

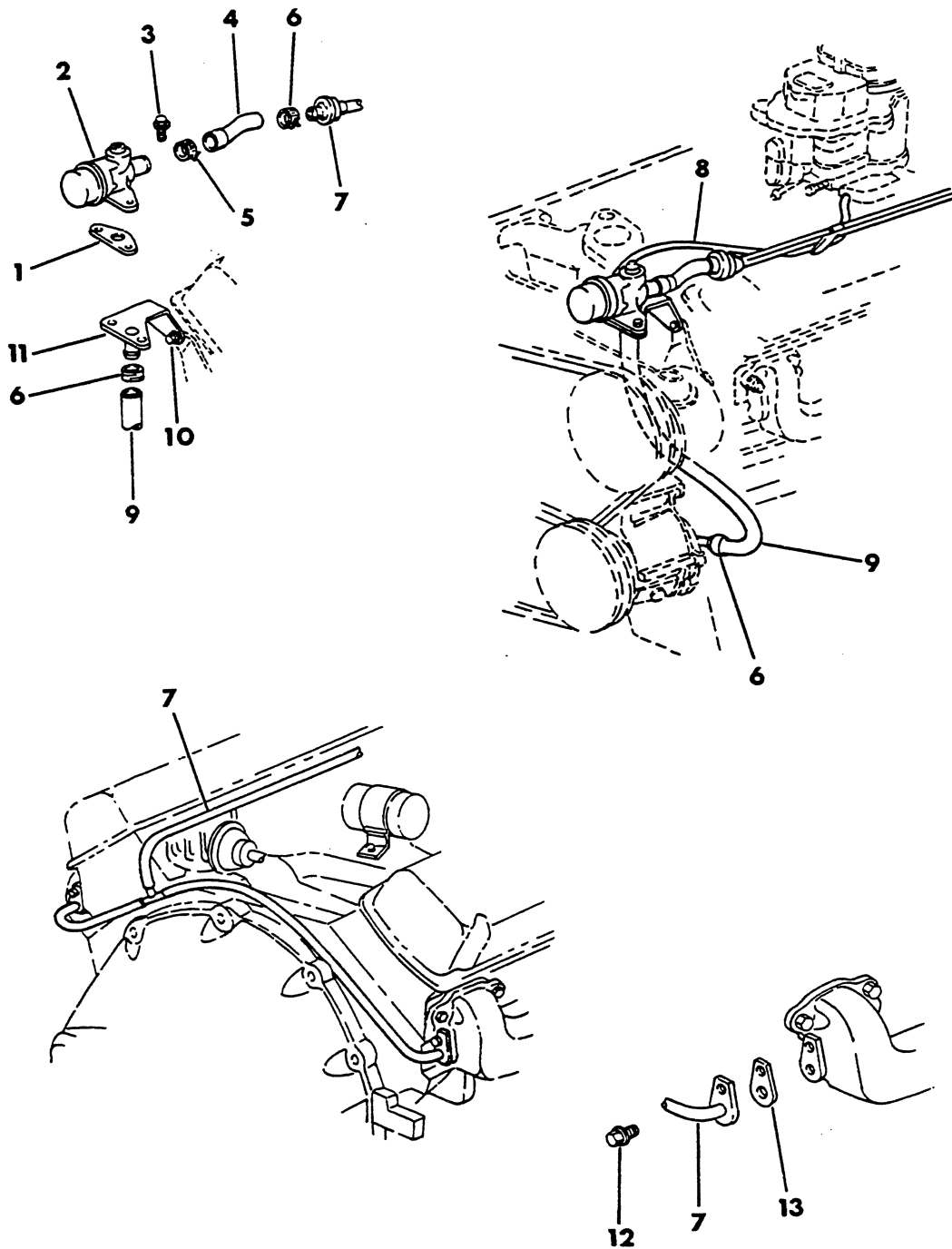
=New Part Number

Printed in U.S.A.

June, 1982

8325 061

AIR PUMP TUBING
318 - 360 ENGINE
A-D-W w/o SNOWPLOW 1979-80



ITEM	PART NUMBER	QTY	MODEL	DESCRIPTION
AIR PUMP TUBING				
318 - 360 ENGINE				
A-D-W w/o SNOWPLOW 1979-80				
1	3671 084	1		GASKET, Diverter Valve
2				VALVE, Diverter
	3830 959	1		1978-79
	4179 720	1		1980
3	181 065	2		SCREW
4	4117 030	1		HOSE, Diverter Valve to Exhaust Check Valve
5	3870 465	1		CLAMP
6	2448 761	3		CLAMP
7	4086 676	1		VALVE, Crossover Tube & Check
	4167 429	1		TUBE, Downstream Air Injection 1980
8	3744 936	1		HOSE, Diverter Valve Control
9				HOSE, Air Pump to Diverter Valve
	3733 200	1		1978-79
	4210 720	1		1980
10	6029 799	1		SCREW
11	4116 928	1		TUBE, Diverter Valve Mounting
12		2		SCREW (not serviced)
13	3671 142	2		GASKET, Air Injection Tube
	3751 249	2		COVER, Exh. Manifold Air Inj.

LIGHT	A = All Sport Utility (Ramcharger).	B = All Compact Models.	D = Conventional Cab.
DUTY	AD = 2 Wheel Drive Only (Ramcharger).	CB-MB = Compact Front Section Only.	W = Conventional Cab 4 Wheel Drive.
CODES:	AW = 4 Wheel Drive Only (Ramcharger).	P = Forward Control Chassis.	M = Motor Home.
MEDIUM-HEAVY CODES:	XNT = Low Cab Forward.	D = Conventional Cab.	S = School Bus. W = 4-Wheel Drive.

AR=Use as Required

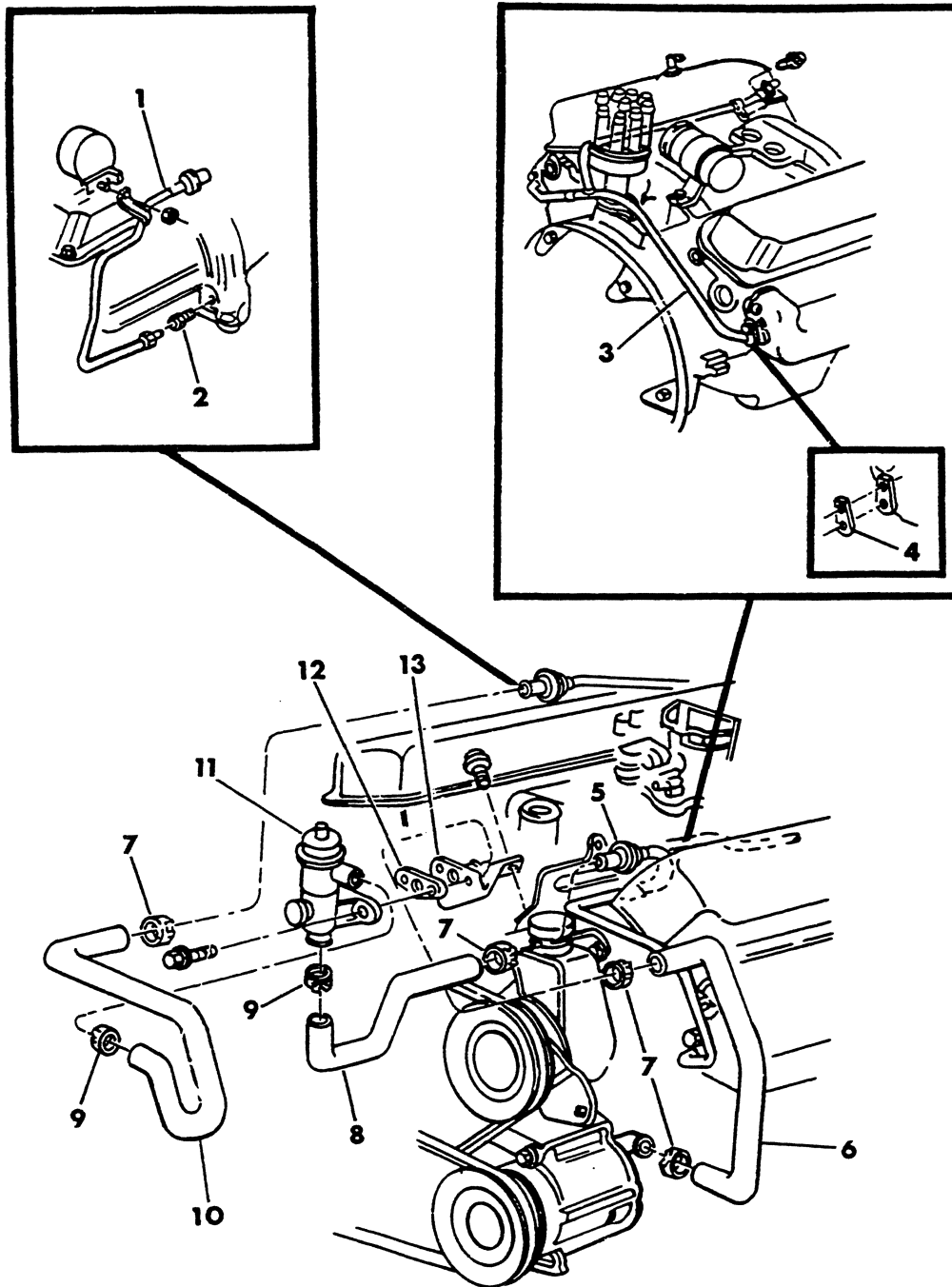
= New Part Number

Printed in U.S.A.

June, 1982

8325 063

AIR PUMP TUBING
318 - 360 ENGINE
A-D-W w/o SNOWPLOW 1981



ITEM	PART NUMBER	QTY	MODEL	DESCRIPTION
AIR PUMP TUBING				
318 - 360 ENGINE				
A-D-W w/o SNOWPLOW 1981				
1	4210 202	1		TUBE, Exhaust Manifold Inj. w/Calif. LDC
2	6031 726	1		CONNECTOR, Exh. Man. Inj. Tube w/Calif. LDC
3	4086 676	1		VALVE, Crossover Tube & Check w/o Calif. exc. LDC
4	3671 142	AR		GASKET, Air Inj. Tube
	3751 249	AR		COVER, Exh. Manifold Air Inj.
5	4167 429	1		TUBE, Downstream Air Inj. w/o Calif. LDC
6	4210 206	1		HOSE, Air Pump Elbow to Air Switch Valve
7	3671 264	4		CLAMP
8	4210 198	1		HOSE, Diverter Valve to Air Inj. Tube
9	3870 465	2		CLAMP
10	4210 204	1		HOSE, Air Switch & Relief Valve to Exh. Man. Inj. Tube w/Calif. LDC
11				VALVE, Air Switch & Relief
	4241 874	1	D-W1,2-AW1	318 - 360 Eng. 4 Bbl. w/Calif. LDC
	4179 720	1	D-W1,2-AW1	318 Eng. 4 Bbl. w/o Calif. LDC
	4268 575	1	D-W1,2-AW1	360 Eng. 4 Bbl. w/o Calif. LDC
	4179 720	1	D-W1,2-AW1	VALVE, Diverter 318 Eng. 2 Bbl.
	4179 720	1	D2,3-W2	318 Eng. 4 Bbl. HDC
	4179 720	1	D-W-AW1	360 Eng. 4 Bbl. HDC
	4179 720	1	W3	360 Eng. 4 Bbl.
12	4179 700	1		GASKET, Air Switch or Diverter Valve
13	4210 197	1		BRACKET, Valve Mtg.

LIGHT	A = All Sport Utility (Ramcharger).	B = All Compact Models.	D = Conventional Cab.
DUTY	AD = 2 Wheel Drive Only (Ramcharger).	CB-MB = Compact Front Section Only.	W = Conventional Cab 4 Wheel Drive.
CODES:	AW = 4 Wheel Drive Only (Ramcharger).	P = Forward Control Chassis.	M = Motor Home.
MEDIUM-HEAVY CODES:	XNT = Low Cab Forward.	D = Conventional Cab.	S = School Bus. W = 4-Wheel Drive.

AR=Use as Required

=New Part Number

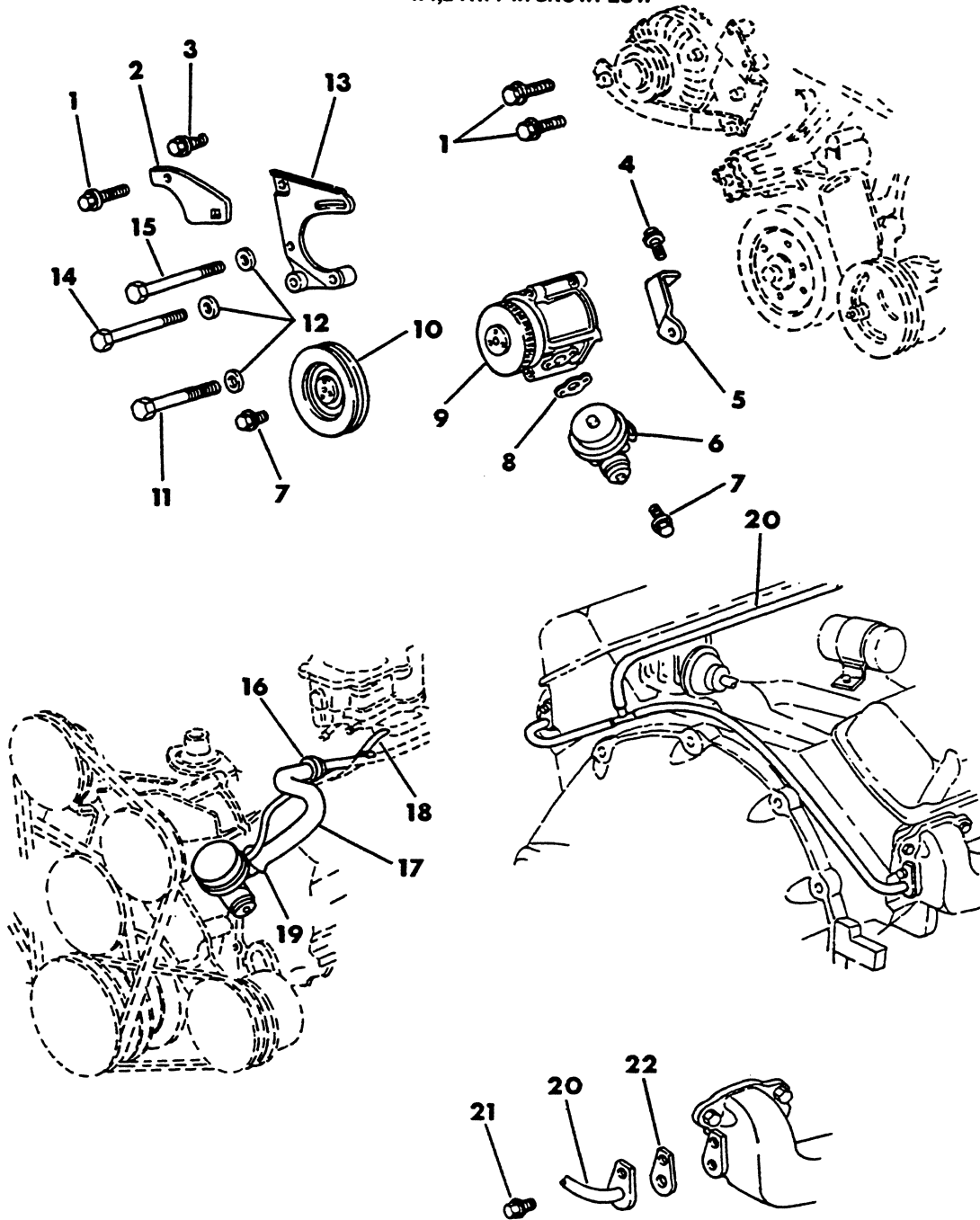
Printed in U.S.A.

June, 1982

1978-81 LIGHT DUTY TRUCK PARTS CATALOG

8325 065

AIR PUMP 318 - 360 ENGINE W1,2-AW1 w/SNOWPLOW



ITEM	PART NUMBER	QTY	MODEL	DESCRIPTION
AIR PUMP				
318 - 360 ENGINE				
W1,2-AW1 w/SNOWFLOW				
1	9416 171	3		SCREW
2	4117 548	1		PLATE, Air Pump Adjust
3	6022 250	AR		SCREW
4		1		SCREW (not serviced)
5	4117 547	1		BRACKET, Air Pump Mtg. - Rear
6				VALVE, Diverter
	3830 996	1		1979
	4179 741	1		1980
7	181 063	AR		SCREW
8				GASKET, Diverter Valve
	3671 084	1		1979
	4179 700	1		1980
9				PUMP, Air
	4173 136	1		1979
	4179 926	1		1980
10				PULLEY, Air Pump
	3870 088	1		360 Eng. 2 Bbl. 1979
	4027 343	1		318 - 360 Eng. 4 Bbl. 1979
	3870 088	1		w/Cat. Conv. except HDC 1980
	3671 345	1		w/Cat. Conv. w/HDC 1980
11		1		SCREW, 3/8 - 16 x 4.75 (not serviced)
12		3		WASHER (not serviced)
13	4117 546	1		BRACKET, Air Pump Mounting
14	9411 859	1		SCREW
15	9418 276	1		SCREW
16	2448 761	1		CLAMP
17				HOSE, Diverter Valve to Exhaust Check Valve
	4117 459	1		1979
	4210 599	1		1980-81
18	3744 936	1		HOSE, Diverter Valve Control
19	3870 465	1		CLAMP
20	4086 676	1		VALVE, Crossover Tube & Check
21		2		SCREW (not serviced)
22	3671 142	2		GASKET, Air Injection Tube
	3751 249	2		COVER, Exhaust Manifold

LIGHT A = All Sport Utility (Ramcharger).

B = All Compact Models.

D = Conventional Cab.

DUTY AD = 2 Wheel Drive Only (Ramcharger).

CB-MB = Compact Front Section Only.

W = Conventional Cab 4 Wheel Drive.

CODES: AW = 4 Wheel Drive Only (Ramcharger).

P = Forward Control Chassis.

M = Motor Home.

MEDIUM-HEAVY CODES: XNT = Low Cab Forward. D = Conventional Cab. S = School Bus. W = 4-Wheel Drive.

AR=Use as Required

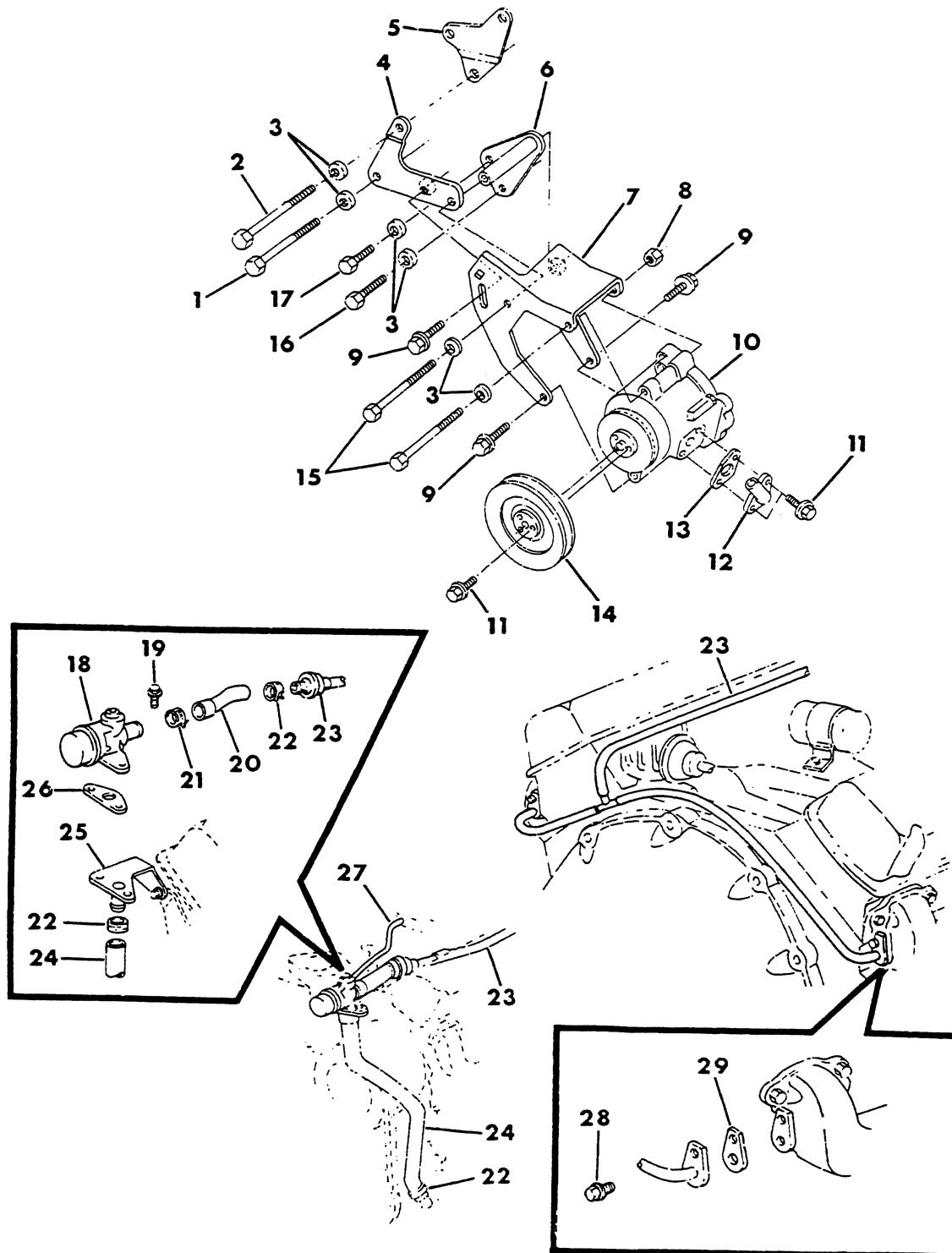
=New Part Number

Printed in U.S.A.

June, 1982

8325 080L

AIR PUMP 360 ENGINE MOTOR HOME 1978-79



ITEM	PART NUMBER	QTY	MODEL	DESCRIPTION
AIR PUMP 360 ENGINE MOTOR HOME 1978-79				
1	2129 379	1		SCREW
2	6028 166	1		SCREW
3		6		WASHER (not serviced)
4	4031 481	1		BRACKET, Air Pump - Eng. Front
5				BRACKET, Power Steering Pump (refer to group 19)
6	4031 483	1		BRACKET, Air Pump - Eng. Rear
7	4071 616	1		BRACKET, Air Pump Mounting
8	118 615	1		NUT
9	6029 799	3		SCREW
10				PUMP, Air
	3870 305	1		1978
	4131 198	1		1979
11	181 063	2		SCREW
12	4006 431	1		ELBOW, Air Pump Outlet Hose
13	3671 084	1		GASKET, Diverter Valve
14	4027 343	1		PULLEY, Air Pump
15		2		SCREW 3/8 - 16 x 4.75 (not serviced)
16	9421 218	1		SCREW
17	2121 588	1		SCREW
18	3830 959	1		VALVE, Diverter
19	181 065	2		SCREW
20				HOSE, Diverter Valve to Exhaust Check Valve
	4037 159	1		1978
	4117 030	1		1979
21	3870 465	1		CLAMP
22	2448 761	3		CLAMP
23	4086 676	1		VALVE, Crossover Tube & Check
24	3744 936	1		HOSE, Diverter Valve Control
25	4036 036	1		HOSE, Air Pump to Diverter Valve
26	4116 928	1		TUBE, Diverter Valve Mounting
27	3671 084	1		GASKET, Diverter Valve
28		2		SCREW (not serviced)
29	3671 142	2		GASKET, Air Injection Tube
	3751 249	2		COVER, Exhaust Manifold

LIGHT	A = All Sport Utility (Ramcharger).	B = All Compact Models.	D = Conventional Cab.
DUTY	AD = 2 Wheel Drive Only (Ramcharger).	CB-MB = Compact Front Section Only.	W = Conventional Cab 4 Wheel Drive.
CODES:	AW = 4 Wheel Drive Only (Ramcharger).	P = Forward Control Chassis.	M = Motor Home.
MEDIUM-HEAVY CODES: XNT = Low Cab Forward. D = Conventional Cab. S = School Bus. W = 4-Wheel Drive.			

AR=Use as Required

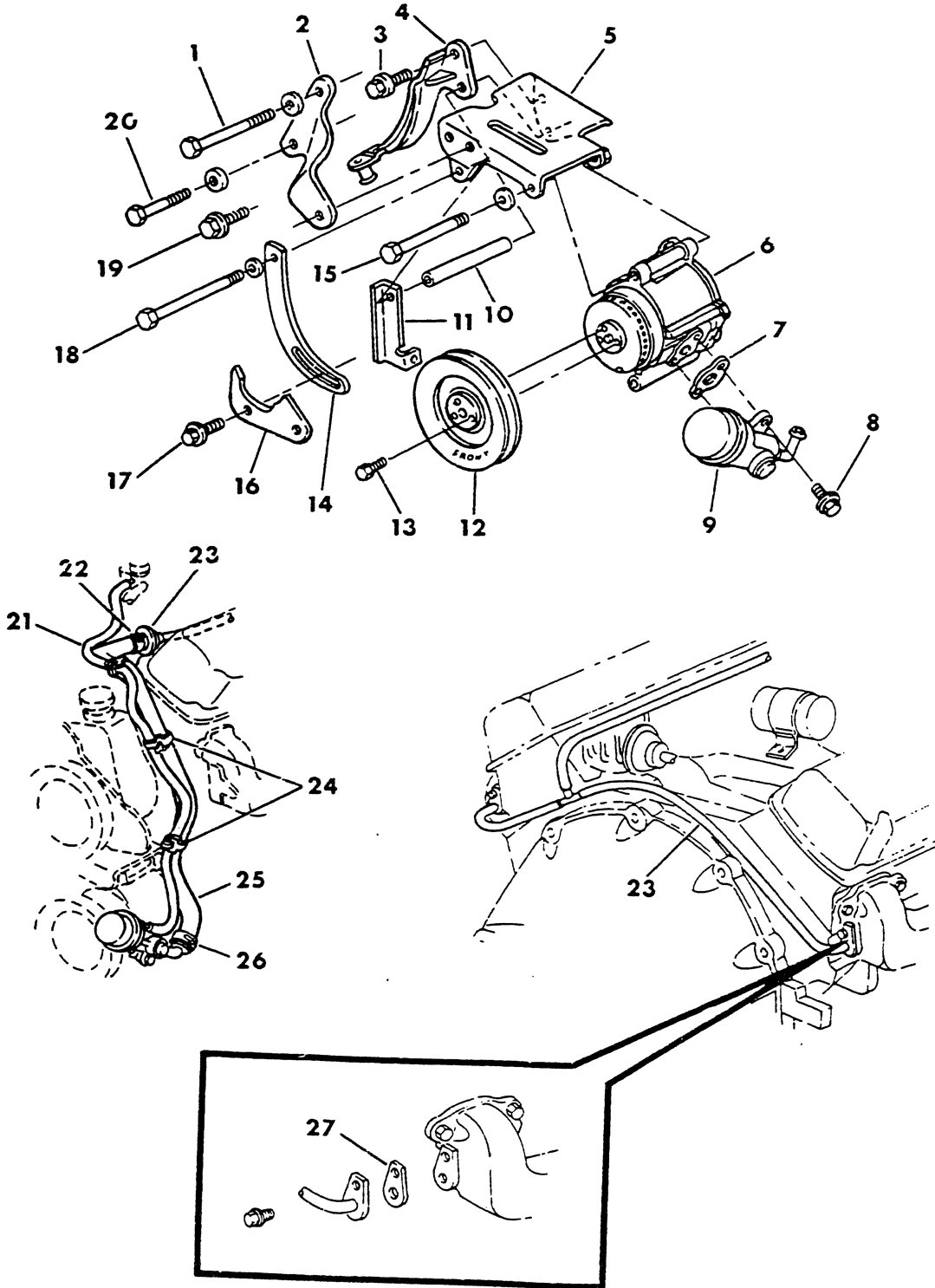
=New Part Number

Printed in U.S.A.

June, 1982

8325 J83

AIR PUMP 360 ENGINE MOTOR HOME 1980



ITEM	PART NUMBER	QTY	MODEL	DESCRIPTION
AIR PUMP 360 ENGINE MOTOR HOME 1980				
1	6028 166	1		SCREW, Long 3/8 - 16 x 5.25
2	3822 874	1		SUPPORT, Air Pump Mtg. Bracket
3	6029 713	1		SCREW, 3/8 - 16 x 1.25
4				PROBE, Magnetic Timing (refer to Illus. 9C-750)
5	4210 560	1		BRACKET, Air Pump Mtg.
6	4186 318	1		PUMP, Air
7	4179 700	1		GASKET, Diverter Valve
8	6101 243	2		SCREW
9	4179 741	1		VALVE, Diverter
10				SPACER, Long
	4112 979	1		w/Man. Trans.
	4213 291	1		w/Auto. Trans.
11	2832 449	1		BRACKET, Trans. Oil Cooler Line
12				PULLEY, Air Pump
	3870 088	1		w/Cat. Conv. HDC
	3671 345	1		w/Cat. Conv. HDC
13	6100 265	3		SCREW
14	3638 864	1		STRAP, Air Pump Adjust
15	9421 897	1		SCREW, 3/8 - 16 x 4.75
16	3823 444	1		PLATE, Air Pump Adjust
17	6101 052	1		SCREW
18	9418 276	1		SCREW, 3/8 - 16 x 6.50
19	6029 799	1		SCREW, 3/8 - 16 x 1.00
20	2129 379	1		SCREW, Short 3/8 - 16 x 2.75
21	3744 936	1		HOSE, Diverter Valve Control
22	2448 761	1		CLAMP
23	4086 676	1		VALVE, Crossover Tube & Check
24		3		STRAP (not serviced)
25	4210 721	1		HOSE, Diverter Valve to Exhaust Check Valve
26	3870 465	1		CLAMP
27	3671 142	2		GASKET, Air Injection Tube
	3751 249	2		COVER, Exhaust Manifold

LIGHT	A = All Sport Utility (Ramcharger).	B = All Compact Models.	D = Conventional Cab.
DUTY	AD = 2 Wheel Drive Only (Ramcharger).	CB-MB = Compact Front Section Only.	W = Conventional Cab 4 Wheel Drive.
CODES:	AW = 4 Wheel Drive Only (Ramcharger).	P = Forward Control Chassis.	M = Motor Home.

MEDIUM-HEAVY CODES: XNT = Low Cab Forward. D = Conventional Cab. S = School Bus. W = 4-Wheel Drive.

AR=Use as Required

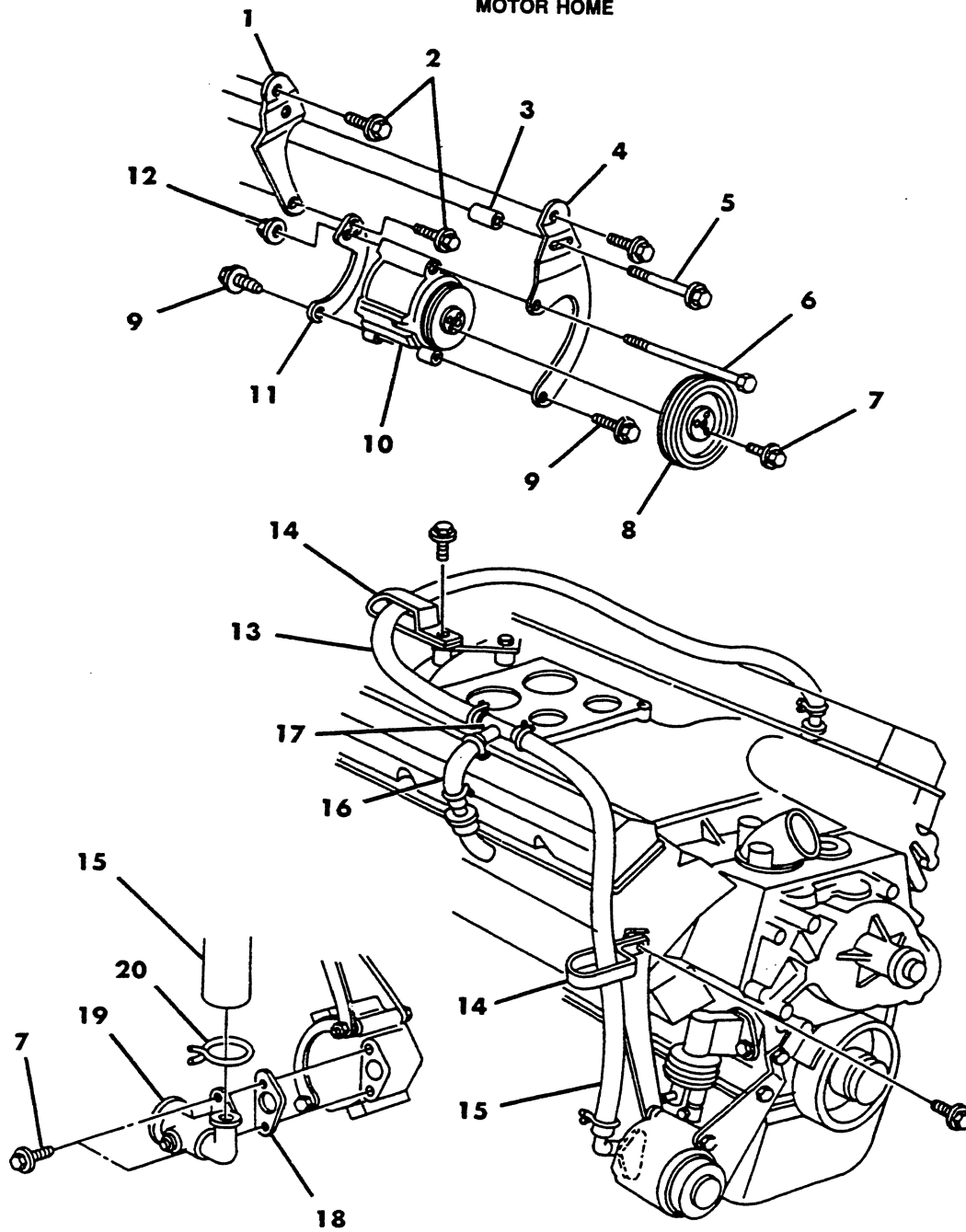
=New Part Number

Printed in U.S.A.

June, 1982

8325 086

AIR PUMP & DIVERTER VALVE 446 ENGINE MOTOR HOME



ITEM	PART NUMBER	QTY	MODEL	DESCRIPTION
AIR PUMP & DIVERTER VALVE				
446 ENGINE				
MOTOR HOME				
1	4115 119	1		BRACKET, Support Mounting - Rear
2	6022 250	3		SCREW
3	4167 482	1		SPACER
4	4112 710	1		MOUNTING BRACKET, Front
5				SCREW, 1/2 - 13 x 2.25 (not serviced)
6				BOLT, 3/8 - 16 x 4.75 (not serviced)
7	181 063	AR		SCREW
8	4117 201	1		PULLEY, Single Groove
9	6029 799	2		SCREW
10	4104 206	1		PUMP, Air 1979
	4179 739	1		1980
11	4167 470	1		MOUNTING BRACKET, Rear
12	6025 020	1		NUT
13	4126 156	1		HOSE
				CLAMP, (not serviced)
14				CLIP, (not serviced)
15	4026 157	1		HOSE
16	4167 575	1		HOSE, Formed 90°
17	4167 542	1		TEE
18	3671 084	1		GASKET, Diverter Valve 1979
	4179 700	1		1980
19	3830 996	1		VALVE, Diverter 1979
	4179 741	1		1980
20	3870 465	1		CLAMP

LIGHT A = All Sport Utility (Ramcharger). B = All Compact Models. D = Conventional Cab.
DUTY AD = 2 Wheel Drive Only (Ramcharger). CB-MB = Compact Front Section Only. W = Conventional Cab 4 Wheel Drive.
CODES: AW = 4 Wheel Drive Only (Ramcharger). P = Forward Control Chassis. M = Motor Home.

MEDIUM-HEAVY CODES: XNT = Low Cab Forward. D = Conventional Cab. S = School Bus. W = 4-Wheel Drive.

AR=Use as Required

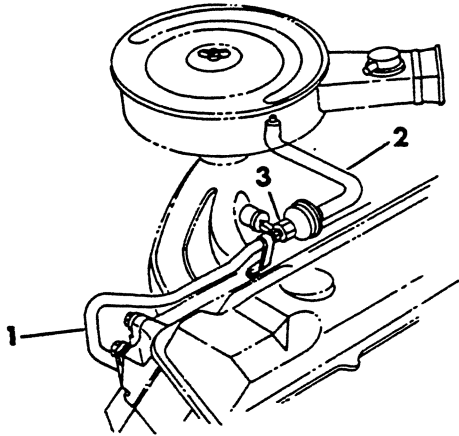
= New Part Number

Printed in U.S.A.

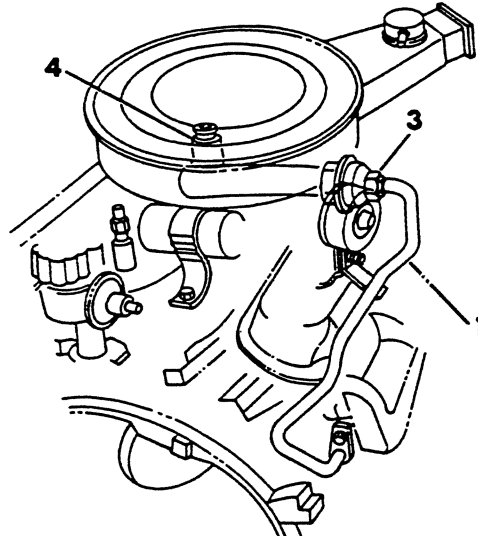
June, 1982

8325 090A

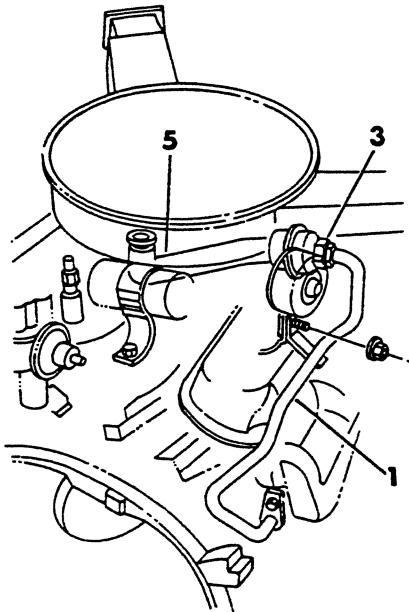
ASPIRATOR



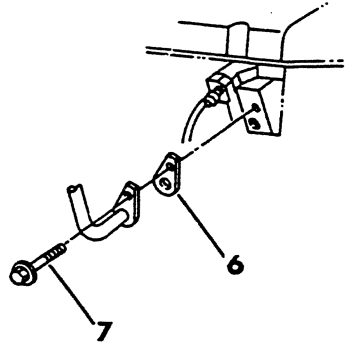
225 ENG.



318 ENG. 2 BBL.



D1-LITTLE RED TRUCK
360-HIGH PERF.



ITEM	PART NUMBER	QTY	MODEL	DESCRIPTION
ASPIRATOR				
1				TUBE, Aspirator
	4104 430	1		225 Eng.
	4115 360	1		318 Eng. & 360 Eng. Hi Perf.
2	4104 501	1		HOSE, Aspirator to Air Cleaner - 225 Eng.
3				VALVE, Aspirator
	4041 966	1		225 & 318 Eng.
	4001 966	1	D1	360 Eng. Hi Perf.
4				HOSE, Aspirator to Air Cleaner - 318 Eng.
	4112 666	1	B1,2,3	1978-79
	4115 361	1	A-D-W1,2	1978-79
	4112 666	1		1980-81
5	4115 362	1	D1	HOSE, Air Cleaner Nipple to Aspirator Valve - 360 Eng. Hi Perf.
6	3671 142	1		GASKET, Aspirator Tube
7		AR		SCREW, 5/16 - 18 x .75 (not serviced)

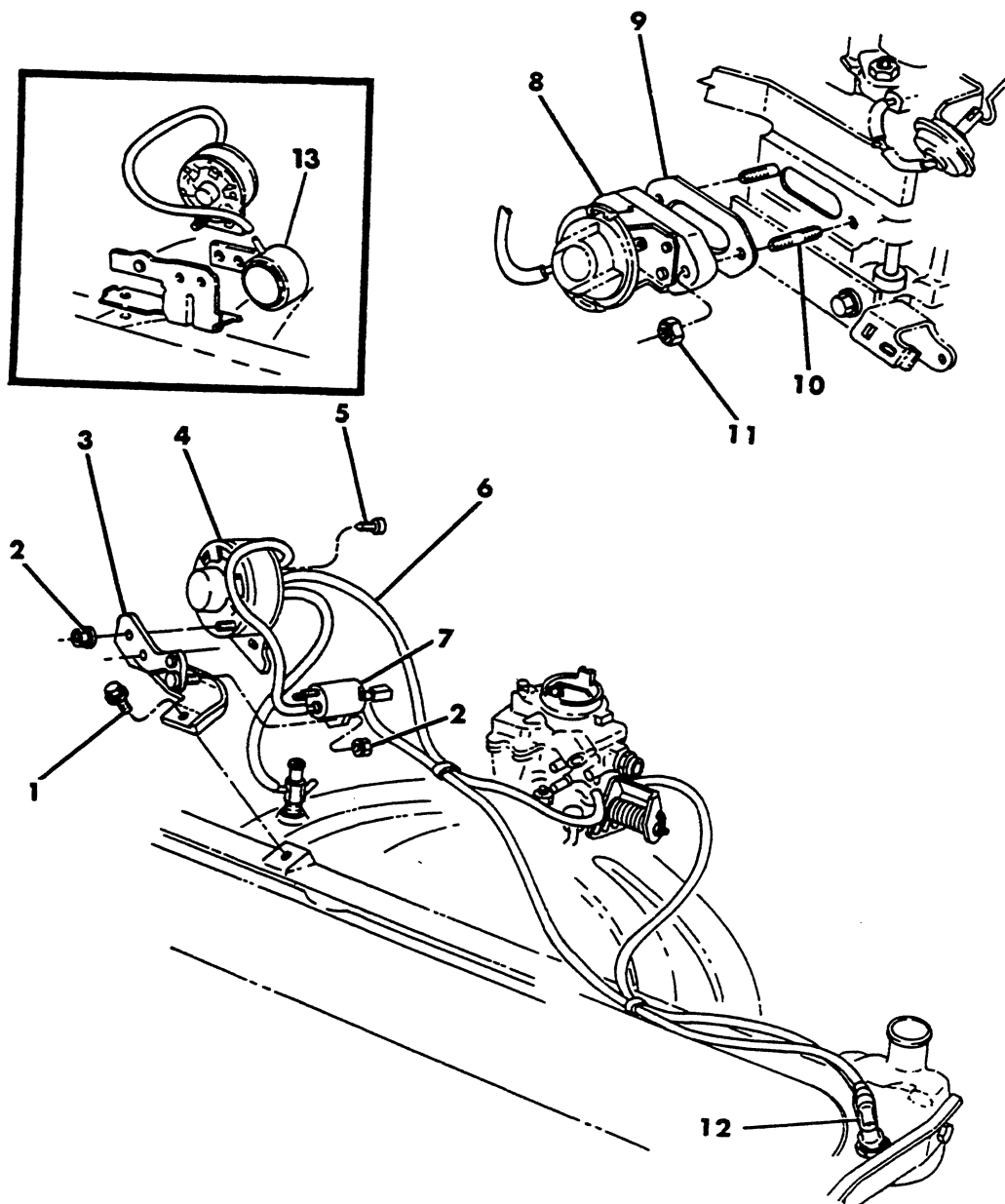
LIGHT A = All Sport Utility (Ramcharger). B = All Compact Models. D = Conventional Cab.
DUTY AD = 2 Wheel Drive Only (Ramcharger). CB-MB = Compact Front Section Only. W = Conventional Cab 4 Wheel Drive.
CODES: AW = 4 Wheel Drive Only (Ramcharger). P = Forward Control Chassis. M = Motor Home.

MEDIUM-HEAVY CODES: XNT = Low Cab Forward. D = Conventional Cab. S = School Bus. W = 4-Wheel Drive.

AR=Use as Required # = New Part Number Printed in U.S.A. June, 1982

EXHAUST GAS RECIRCULATION SYSTEM (EGR) 225 ENGINE

8325 425A



ITEM	PART NUMBER	QTY	MODEL	DESCRIPTION
EXHAUST GAS RECIRCULATION SYSTEM (EGR) 225 ENGINE				
1	6022 250	1		SCREW
2	6025 004	AR		NUT
3				BRACKET, Amplifier Mtg.
	4041 508	1		1978
	4027 783	1		1979
	4041 889	1		1980-81
4				AMPLIFIER, Vacuum
	4041 732	1		stamped 4041732
	4041 733	1		stamped 4041733
	4041 737	1		stamped 4041737
5				SCREW, 8 - 18 x .75 (not serviced)
6		1		HARNESSE, Hose (not serviced)
7				SOLENOID, EGR Vacuum
	4049 776	1		stamped 3874882
	4026 308	1		stamped 3874027
	4026 309	1		stamped 3874030
	4145 127	1		stamped 4145127
	3656 381	1		stamped 3656381
	4145 181	1		stamped 4145181
8				VALVE, EGR (stamped)
	4106 035	1		w/ 4104080, 4105080
	4186 145	1		w/ 4104115, 4105115
	4131 100	1		w/ 4104096, 4105096
	4131 054	1		w/ 4104007, 4105007
	4131 104	1		w/ 4104082, 4105082
	4186 238	1		w/ 4104006, 4105006
	4106 036	1		w/ 4104083, 4105083
	4094 899	1		w/ 4104008, 4105008
	4094 898	1		w/ 4104009, 4105009
	4094 895	1		w/ 4104017, 4105017
	4094 894	1		w/ 4104021, 4105021
	4240 134	1		w/ 4104146, 4105146
	4240 133	1		w/ 4104145, 4105145
	4094 897	1		w/ 4104011, 4105011
	4240 066	1		w/ 4104105, 4105105
	4094 896	1		w/ 4104012, 4105012
9				GASKET, EGR Valve Flange
	3671 425	1		1978
	4173 167	1		1979-80-81
	3671 447	1		COVER, Intake Manifold EGR Valve Flange
10	6029 996	2		STUD
11	143 438	1		NUT
12				SWITCH, Coolant Controlled EGR
	3837 622	1		stamped 3870652 - Blue
	4049 277	1		stamped 4030351 - Black
	3879 736	1		stamped 3870549 - Yellow
	4041 235	1		stamped 4041235 - Lt. Blue
13	4006 692	1		RESEVOIR, EGR Vacuum w/Auto. Trans.

NOTE: The following part is not illustrated.

LIGHT	A = All Sport Utility (Ramcharger).	B = All Compact Models.	D = Conventional Cab.
DUTY	AD = 2 Wheel Drive Only (Ramcharger).	CB-MB = Compact Front Section Only.	W = Conventional Cab 4 Wheel Drive.
CODES:	AW = 4 Wheel Drive Only (Ramcharger).	P = Forward Control Chassis.	M = Motor Home.
MEDIUM-HEAVY CODES:	XNT = Low Cab Forward.	D = Conventional Cab.	S = School Bus. W = 4-Wheel Drive.

AR=Use as Required

#=New Part Number

Printed in U.S.A.

June, 1982

1978-81 LIGHT DUTY TRUCK PARTS CATALOG

EMISSION SYSTEMS

ITEM	PART NUMBER	QTY	MODEL	DESCRIPTION
------	-------------	-----	-------	-------------

EXHAUST GAS RECIRCULATION SYSTEM (EGR) 225 ENGINE

ITEM	PART NUMBER	QTY	MODEL	DESCRIPTION
	4095 316	1	B1,2-D1	VALVE, Vac. Delay w/Man. Trans. w/Calif.

LIGHT	A = All Sport Utility (Ramcharger).	B = All Compact Models.	D = Conventional Cab.
DUTY:	AD = 2 Wheel Drive Only (Ramcharger).	CB-MB = Compact Front Section Only.	W = Conventional Cab 4 Wheel Drive.
CODES:	AW = 4 Wheel Drive Only (Ramcharger).	P = Forward Control Chassis.	M = Motor Home.

MEDIUM-HEAVY CODES: XNT = Low Cab Forward. D = Conventional Cab. S = School Bus. W = 4-Wheel Drive.

AR=Use as Required

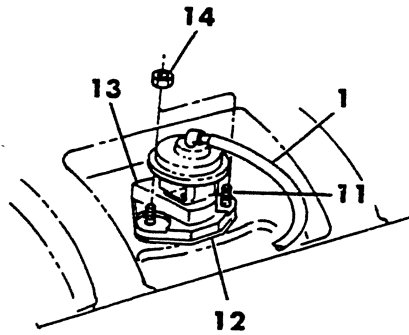
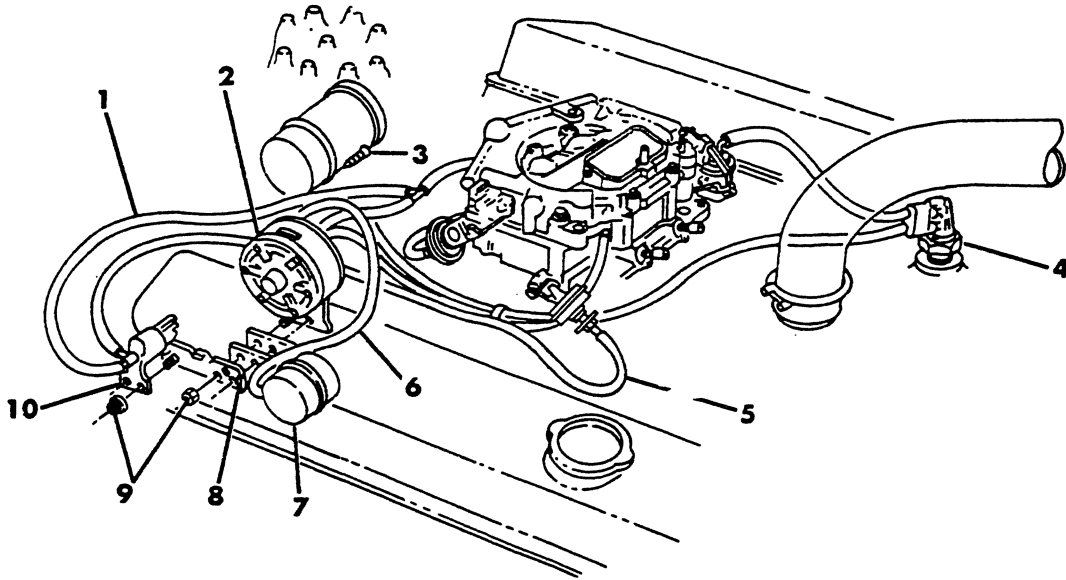
= New Part Number

Printed in U.S.A.

June, 1982

EXHAUST GAS RECIRCULATION SYSTEM (EGR)
318 - 360 ENGINE

8325 450A



ITEM	PART NUMBER	QTY	MODEL	DESCRIPTION
EXHAUST GAS RECIRCULATION SYSTEM (EGR)				
318 - 360 ENGINE				
1				HARNES, Hose (not serviced)
2				AMPLIFIER, Vacuum
	4041 727	1		stamped 4041727
	4041 730	1		stamped 4041730
	4041 731	1		stamped 4041731
	4041 732	1		stamped 4041732
	4041 737	1		stamped 4041737
3		1		SCREW (not serviced)
4				SWITCH, Coolant Controlled EGR
	3879 736	1		stamped 3870549 - Yellow
	4095 231	1		stamped 4095231 - Red
	3837 622	1		stamped 3870652 - Blue
	4049 276	1		stamped 3830429 - Green
	4041 235	1		stamped 4041235 - Lt. Blue
	4268 707	1		stamped 4268707
5	3744 936	1		HOSE, 360 Engine 4 Bbl.
6	3780 508	1		HOSE, 360 Engine 4 Bbl.
7	4006 692	1		RESEVOIR, EGR Amplifier Vacuum, 360 Engine 4 Bbl.
8	4027 487	1		BRACKET, Amplifier Mtg.
	4213 380	1	B	1980-81
9	6025 004	AR		NUT
10				SOLENOID, EGR Vacuum
	4026 308	1		stamped 3874027
	4026 309	1		stamped 3874030
	3738 591	1		stamped 3738591
	3656 381	1		stamped 3656381
	4145 181	1		stamped 4145181
	4145 127	1		stamped 4145127
11	6029 997	2		STUD
12	3751 714	1		GASKET, EGR Valve
	3671 448	1		COVER, Intake Manifold EGR Valve Flange
13				VALVE, EGR (stamped)
	3879 729	1		w/ 4104085, 4105085
	4131 224	1		w/ 4104106, 4105106
	4094 889	1		w/ 4104033, 4105033
	4186 143	1		w/ 4104041, 4105041
	4186 168	1		w/ 4104114, 4105114
	3879 729	1		w/ 4104031, 4105031
	4186 115	1		w/ 4104030, 4105030
	4131 056	1		w/ 4104095, 4105095
	4186 113	1		w/ 4104111, 4105111
	4186 144	1		w/ 4104118, 4105118
	4186 142	1		w/ 4104039, 4105039
	4131 051	1		w/ 4104090, 4105090
	4186 114	1		w/ 4104108, 4105108
	4186 184	1		w/ 4104037, 4105037
	4094 893	1		w/ 4104024, 4105024
	4106 038	1		w/ 4104084, 4105084
	4131 226	1		w/ 4104089, 4105089

LIGHT A = All Sport Utility (Ramcharger).

B = All Compact Models.

D = Conventional Cab.

DUTY AD = 2 Wheel Drive Only (Ramcharger).

CB-MB = Compact Front Section Only.

W = Conventional Cab 4 Wheel Drive.

CODES: AW = 4 Wheel Drive Only (Ramcharger).

P = Forward Control Chassis.

M = Motor Home.

MEDIUM-HEAVY CODES: XNT = Low Cab Forward. D = Conventional Cab. S = School Bus. W = 4-Wheel Drive.

AR=Use as Required

= New Part Number

Printed in U.S.A.

June, 1982

1978-81 LIGHT DUTY TRUCK PARTS CATALOG

EMISSION SYSTEMS

ITEM	PART NUMBER	QTY	MODEL	DESCRIPTION
------	-------------	-----	-------	-------------

EXHAUST GAS RECIRCULATION SYSTEM (EGR) 318 - 360 ENGINE

	4131 171	1		w/ 4104104, 4105104
	4094 892	1		w/ 4104026, 4105026
	4094 891	1		w/ 4104027, 4105027
	4131 055	1		w/ 4104075, 4105075
	4106 002	1		w/ 4104079, 4105079
	4094 886	1		w/ 4104077, 4105077
	4094 890	1		w/ 4104028, 4105028
	4131 071	1		w/ 4104029, 4105029
	4186 246	1		w/ 4104036, 4105036
	4186 281	1		w/ 4104128, 4105128
	4106 046	1		w/ 4104086, 4105086
	4186 265	1		w/ 4104125, 4105125
	4106 002	1		w/ 4104079, 4105079
	4186 337	1		w/ 4104130, 4105130
	4186 338	1		w/ 4104132, 4105132
	4186 264	1		w/ 4104122, 4105122
	4240 067	1		w/ 4104110, 4105110
	4240 068	1		w/ 4104144, 4105144
	4240 069	1		w/ 4104142, 4105142
	4240 128	1		w/ 4104151, 4105151
	4240 129	1		w/ 4104149, 4105149
	4240 130	1		w/ 4104148, 4105148
	4240 131	1		w/ 4104150, 4105150
	4240 132	1		w/ 4104147, 4105147
	4186 280	1		w/ 4104127, 4105127
	4186 139	1		w/ 4104112, 4105112
	4240 151	1		w/ 4104152, 4105152
	4094 896	1		w/ 4104012, 4105012
	4240 166	1		w/ 4104158, 4105158
	4240 167	1		w/ 4104159, 4105159
	4131 200	1		w/ 4104040, 4105040
14	143 438	AR		NUT

NOTE: The following parts are not illustrated.

	4241 895	1	D-W1,2-AW1	BRACKET, EGR Vacuum Time Delay Sol. Mtg. 360 Eng. 4 Bbl. w/o Calif. 1981
	3751 777	1	B2,3-D1,2-W1	ADAPTER, CCEVS Switch 318 Eng. 4 Bbl. MDC 1981
	4095 316	1	B2,3-D1,2-W1	DELAY, 3/16 x 3/16 318 Eng. 4 Bbl. MDC 1980
	4241 297	1		DELAY, 3/16 x 3/16 318 & 360 Eng. 4 Bbl.
	4241 362	1		TEE, EGR Hose Harness 318 Eng. 4 Bbl. w/Calif. LDC 1981

LIGHT	A = All Sport Utility (Ramcharger).	B = All Compact Models.	D = Conventional Cab.
DUTY	AD = 2 Wheel Drive Only (Ramcharger).	CB-MB = Compact Front Section Only.	W = Conventional Cab 4 Wheel Drive.
CODES:	AW = 4 Wheel Drive Only (Ramcharger).	P = Forward Control Chassis.	M = Motor Home.

MEDIUM-HEAVY CODES: XNT = Low Cab Forward. D = Conventional Cab. S = School Bus. W = 4-Wheel Drive.

AR=Use as Required

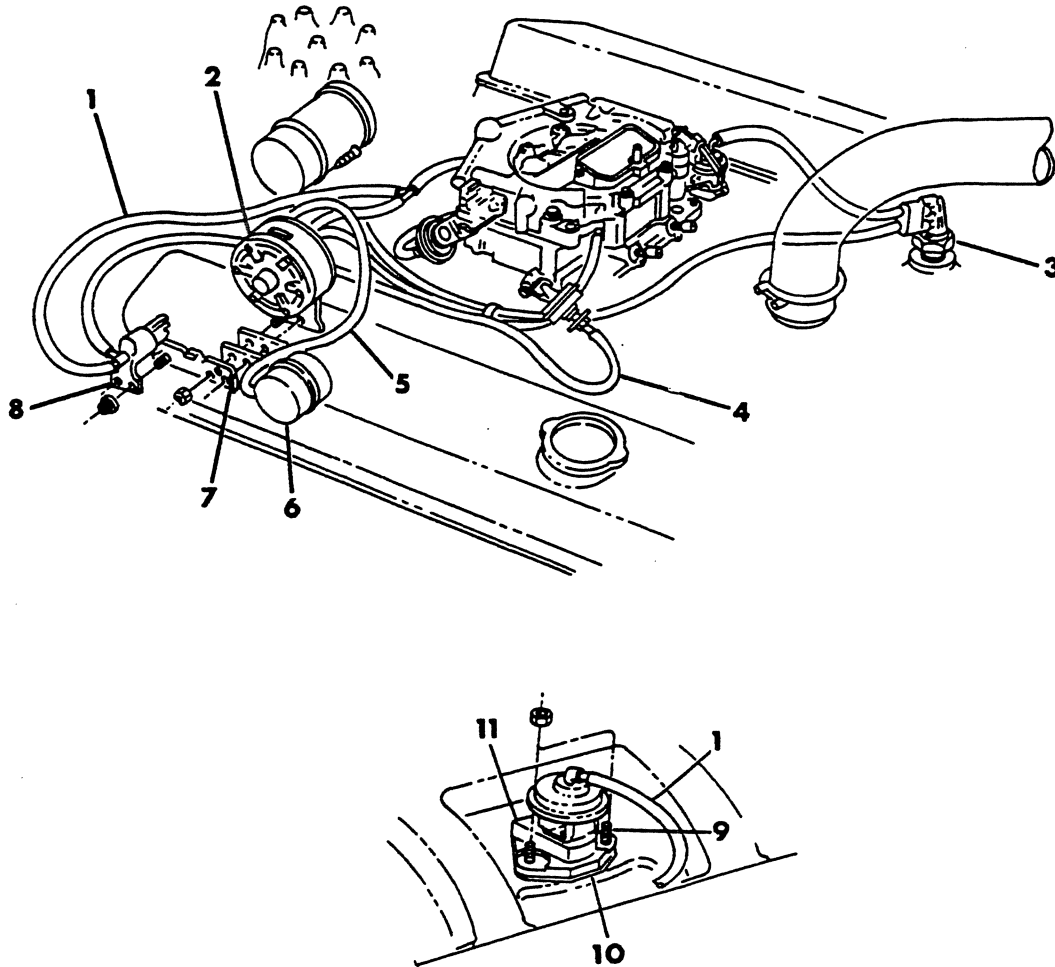
=New Part Number

Printed in U.S.A.

June, 1982

EXHAUST GAS RECIRCULATION SYSTEM (EGR)
360 - 440 ENGINE
MOTOR HOME

8325 477



ITEM	PART NUMBER	QTY	MODEL	DESCRIPTION
EXHAUST GAS RECIRCULATION SYSTEM (EGR)				
360 - 440 ENGINE				
MOTOR HOME				
1		1		HARNES, Hose (not serviced)
2				AMPLIFIER, Vacuum
	4041 727	1		stamped 4041727
	4041 730	1		stamped 4041730
	4041 731	1		stamped 4041731
3				SWITCH, Coolant Controlled EGR
	4049 277	1		stamped 4030351 - Black
	4095 231	1		stamped 4095231 - Red
4	3744 936	1		HOSE 360 Eng. 4 Bbl.
5	3780 508	1		HOSE
6	4006 692	1		RESEVOIR, EGR Amplifier Vacuum
7				BRACKET, Amplifier Mtg.
	4027 487	1		360 Eng.
	3671 414	1		440 Eng.
8	3738 591	1		SOLENIOD, EGR Vacuum
9	6029 997	1		STUD
10				GASKET, EGR Valve
	3751 714	1		360 Eng.
	3698 887	1		440 Eng.
	3671 448	1		COVER, Intake Manifold EGR Valve Flange
11				VALVE, EGR (stamped)
	4094 892	1		w/ 4104026, 4105026
	4104 059	1		w/ 4104059
	4186 114	1		w/ 4104108, 4105108
	4104 062	1		w/ 4104062
	4131 051	1		w/ 4104090, 4105090

LIGHT	A = All Sport Utility (Ramcharger).	B = All Compact Models.	D = Conventional Cab.
DUTY	AD = 2 Wheel Drive Only (Ramcharger).	CB-MB = Compact Front Section Only.	W = Conventional Cab 4 Wheel Drive.
CODES:	AW = 4 Wheel Drive Only (Ramcharger).	P = Forward Control Chassis.	M = Motor Home.

MEDIUM-HEAVY CODES: XNT = Low Cab Forward. D = Conventional Cab. S = School Bus. W = 4-Wheel Drive.

AR=Use as Required

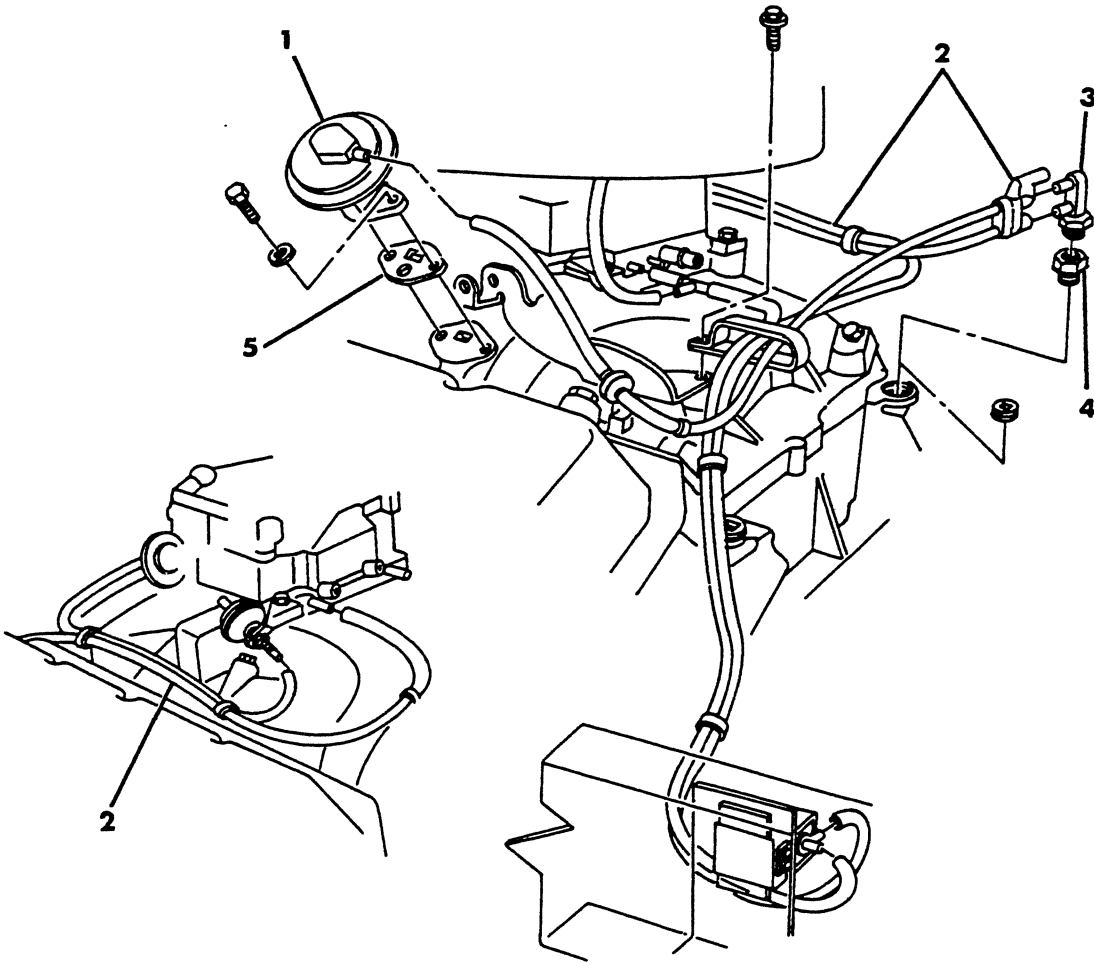
=New Part Number

Printed in U.S.A.

June, 1982

EXHAUST GAS RECIRCULATION SYSTEM (EGR)
446 ENGINE

8325 480A



ITEM	PART NUMBER	QTY	MODEL	DESCRIPTION
------	-------------	-----	-------	-------------

**EXHAUST GAS RECIRCULATION SYSTEM (EGR)
446 ENGINE**

1	4104 117	1		VALVE, EGR
2				HOSE HARNESS (not serviced)
3	4095 231	1		VALVE, Coolant Controlled EGR
4	444 035	1		BUSHING, Reducer
5	4164 271	1		GASKET, EGR Valve

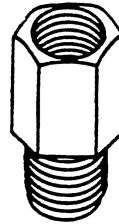
LIGHT	A = All Sport Utility (Ramcharger).	B = All Compact Models.	D = Conventional Cab.
DUTY	AD = 2 Wheel Drive Only (Ramcharger).	CB-MB = Compact Front Section Only.	W = Conventional Cab 4 Wheel Drive.
CODES:	AW = 4 Wheel Drive Only (Ramcharger).	P = Forward Control Chassis.	M = Motor Home.
MEDIUM-HEAVY CODES: XNT = Low Cab Forward. D = Conventional Cab. S = School Bus. W = 4-Wheel Drive.			
AR=Use as Required		# =New Part Number	Printed in U.S.A.
			June, 1982

8325 520A

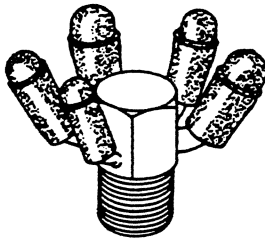
VACUUM SUPPLY CONNECTORS



1



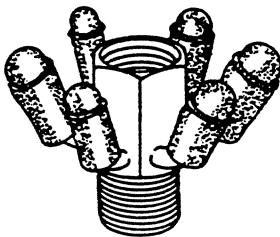
2



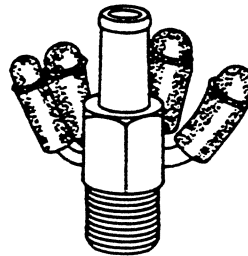
3



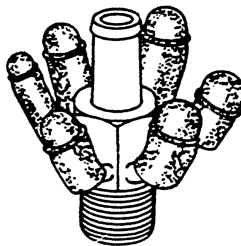
4



5



6



7



8

ITEM	PART NUMBER	QTY	MODEL	DESCRIPTION
------	-------------	-----	-------	-------------

VACUUM SUPPLY CONNECTORS

1	1944 154	1		CONNECTOR, Vacuum Supply
2	3732 753	1		CONNECTOR, Vacuum Supply
3	3870 543	1		CONNECTOR, Vacuum Supply
4	4094 872	1		CONNECTOR, Vacuum Supply
5	3699 038	1		CONNECTOR, Vacuum Supply
6	3732 754	1		CONNECTOR, Vacuum Supply
7	4026 117	1		CONNECTOR, Vacuum Supply
8	1859 127	1		PLUG
	4210 580	1		CONNECTOR, Vacuum Supply 1980-81 (not shown)

LIGHT A = All Sport Utility (Ramcharger). B = All Compact Models. D = Conventional Cab.
DUTY AD = 2 Wheel Drive Only (Ramcharger). CB-MB = Compact Front Section Only. W = Conventional Cab 4 Wheel Drive.
CODES: AW = 4 Wheel Drive Only (Ramcharger). P = Forward Control Chassis. M = Motor Home.

MEDIUM-HEAVY CODES: XNT = Low Cab Forward. D = Conventional Cab. S = School Bus. W = 4-Wheel Drive.

AR=Use as Required

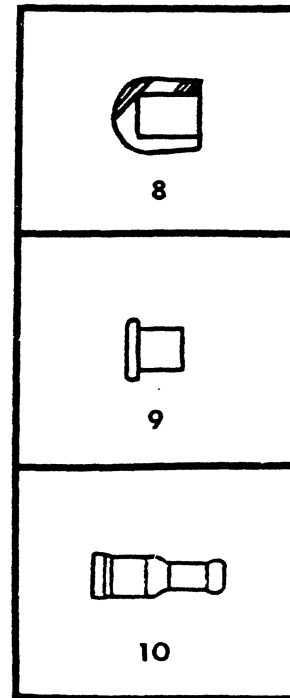
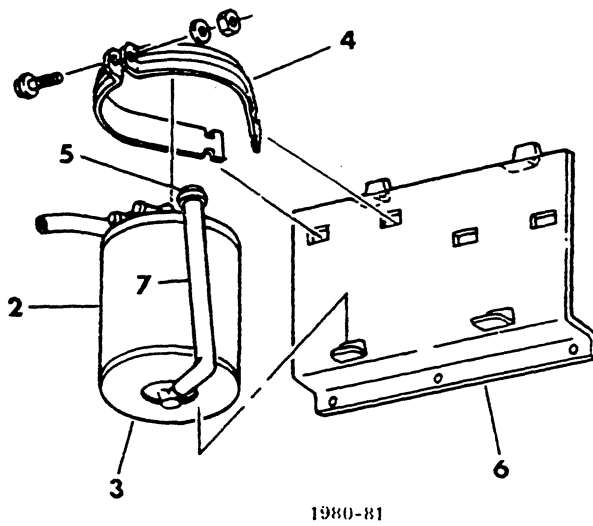
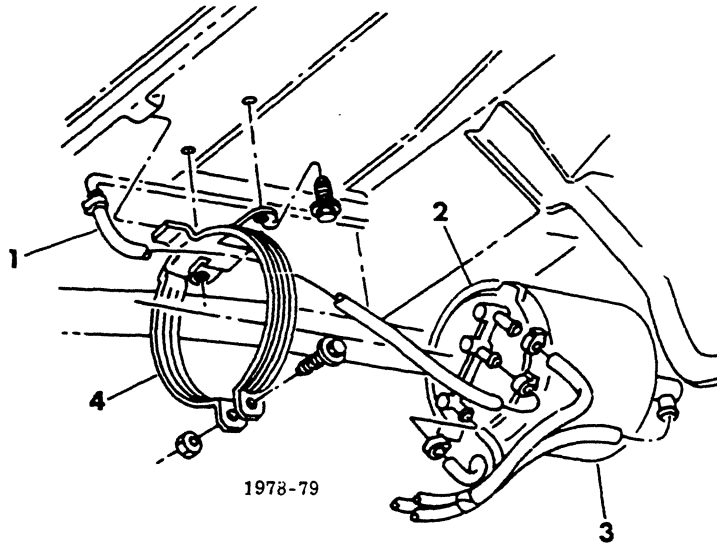
= New Part Number

Printed in U.S.A.

June, 1982

8325 525C

VAPOR CANISTER - SINGLE
B-CB-MB



ITEM	PART NUMBER	QTY	MODEL	DESCRIPTION
VAPOR CANISTER - SINGLE B-CB-MB				
1	4002 886	1		HOSE, Fuel Tank ECS
2				CANISTER, Vapor
	3577 595	1		1978-79
	4095 823	1		1980
	4241 838	1		1981
3	4115 437	1		CAP, Vapor Canister Filter
	3577 586	1		FILTER, Vapor Canister
4				BRACKET & STRAP, Canister Mtg.
	3577 596	1		1978-79
	4167 722	2		1980-81
5	4041 910	1		CAP, Standpipe
6				SUPPORT, Vapor Canister Mtg.
	4167 723	1		1980
	4241 070	1		1981
7	4041 909	1		STANDPIPE
8	3820 667	1		PLUG, Fuel Tank Vent
9	3733 285	1		PLUG, Carb. Bowl Vent
10	4095 825	1		ADAPTER, Canister Nipple
NOTE: The following part is not illustrated.				
	4241 846	1		TUBE, Formed Bowl Vent

LIGHT	A = All Sport Utility (Ramcharger).	B = All Compact Models.	D = Conventional Cab.
DUTY	AD = 2 Wheel Drive Only (Ramcharger).	CB-MB = Compact Front Section Only.	W = Conventional Cab 4 Wheel Drive.
CODES:	AW = 4 Wheel Drive Only (Ramcharger).	P = Forward Control Chassis.	M = Motor Home.

MEDIUM-HEAVY CODES: XNT = Low Cab Forward. D = Conventional Cab. S = School Bus. W = 4-Wheel Drive.

AR=Use as Required

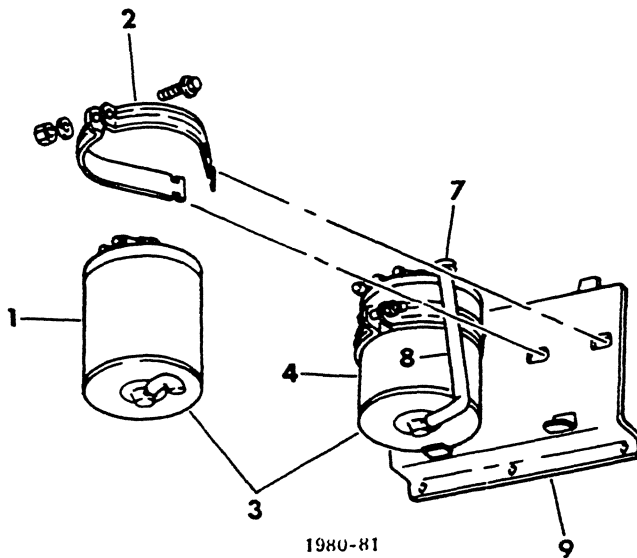
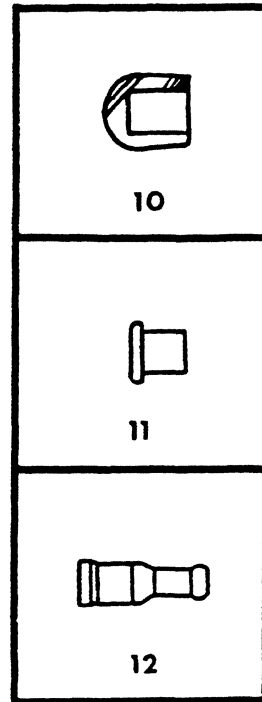
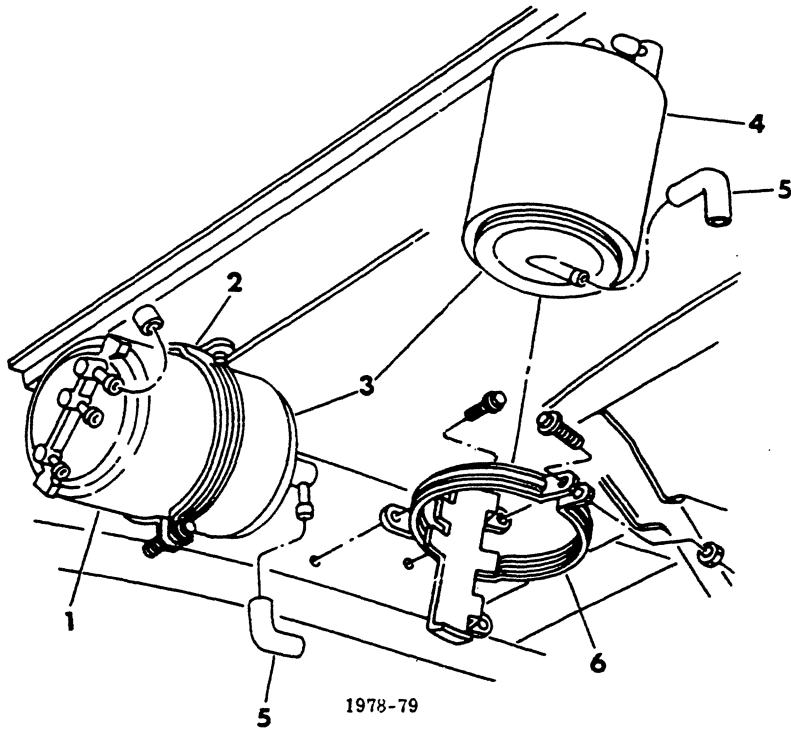
= New Part Number

Printed in U.S.A.

June, 1982

8325 530

VAPOR CANISTER - DUAL
B-CB-MB



ITEM	PART NUMBER	QTY	MODEL	DESCRIPTION
VAPOR CANISTER - DUAL B-CB-MB				
1				CANISTER, Vapor - Primary
	3577 595	1		1978-79
	4184 353	1	B1,2,3	1980 w/36 Gal. Fuel Tank LDC
	4041 226	1	B2,3-CB-MB	1980 w/Calif.
	4241 838	1		1981
2				BRACKET & STRAP, Canister Mtg.
	3577 596	1		1978-79
	4167 722	4		1980-81
3				CAP, Vapor Canister Filter
	4115 437	1		
	3577 586	1		FILTER, Vapor Canister
4				CANISTER, Vapor - Secondary
	4240 095	1	B1	225 Eng. w/36 Gal. Fuel Tank w/Calif. 1978
	4089 188	1	B1	225 Eng. w/36 Gal. Fuel Tank w/o Calif. 1978
	4240 095	1	B2	225 Eng. w/36 Gal. Fuel Tank MDC 1978
	4240 095	1	B1,2,3	318 & 360 Eng. w/36 Gal. Fuel Tank w/Man. Trans. 1978
	4089 188	1	B1,2,3	318 & 360 Eng. w/36 Gal. Fuel Tank w/Auto. Trans. 1978
	3577 584	1	B3	360 Eng. 2 Bbl. & 440-1 Eng. w/36 Gal. Fuel Tank w/Calif. HDC 1978
	4089 188	1	B1	400 & 440 Eng. w/36 Gal. Fuel Tank 1978
	3577 584	1	CB3-MB3,4	w/36 Gal. Fuel Tank w/Calif. 1978
	4116 877	1		1979
	4095 823	1	B1,2,3	w/22 Gal. Fuel Tank LDC 1980
	4095 824	1	B1,2,3	w/36 Gal. Fuel Tank LDC 1980
	4041 226	1	B2,3-CB-MB	w/Calif. 1980
	4241 838	1		1981
5	3822 906	1		HOSE, Canister Drain 1978-79
6	3834 722	1		BRACKET & STRAP, Secondary Canister Mtg. 1978-79
7	4041 910	1		CAP, Standpipe
8	4041 909	1		STANDPIPE
9	4167 723	1		SUPPORT, Canister Mtg. 1980-81
10	3820 667	1		PLUG, Fuel Tank Vent
11	3733 285	1		PLUG, Carb. Bowl Vent
12	4095 825	1		ADAPTER, Canister Nipple
NOTE: The following part is not illustrated.				
	4241 846	1		TUBE, Formed Bowl Vent

LIGHT A = All Sport Utility (Ramcharger).

B = All Compact Models.

D = Conventional Cab.

DUTY AD = 2 Wheel Drive Only (Ramcharger).

CB-MB = Compact Front Section Only.

W = Conventional Cab 4 Wheel Drive.

CODES: AW = 4 Wheel Drive Only (Ramcharger).

P = Forward Control Chassis.

M = Motor Home.

MEDIUM-HEAVY CODES: XNT = Low Cab Forward. D = Conventional Cab. S = School Bus. W = 4-Wheel Drive.

AR=Use as Required

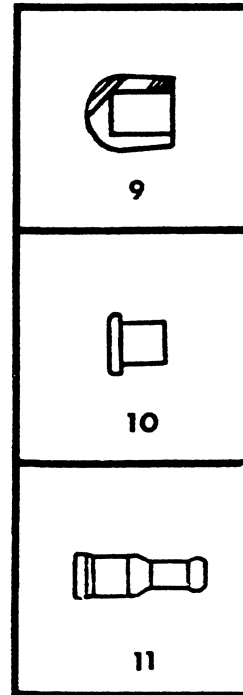
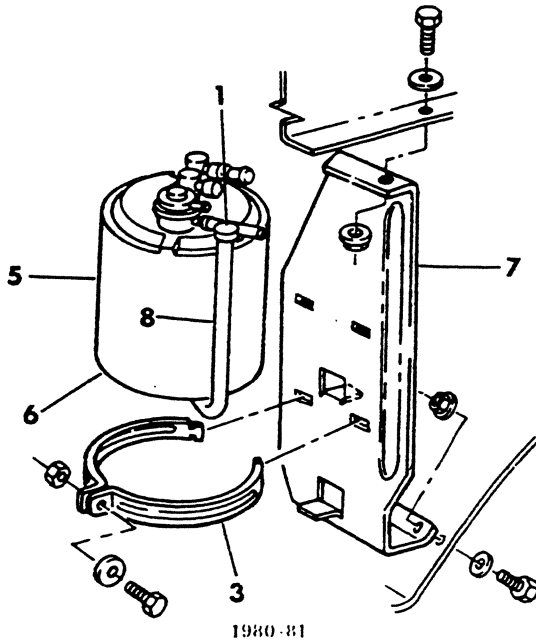
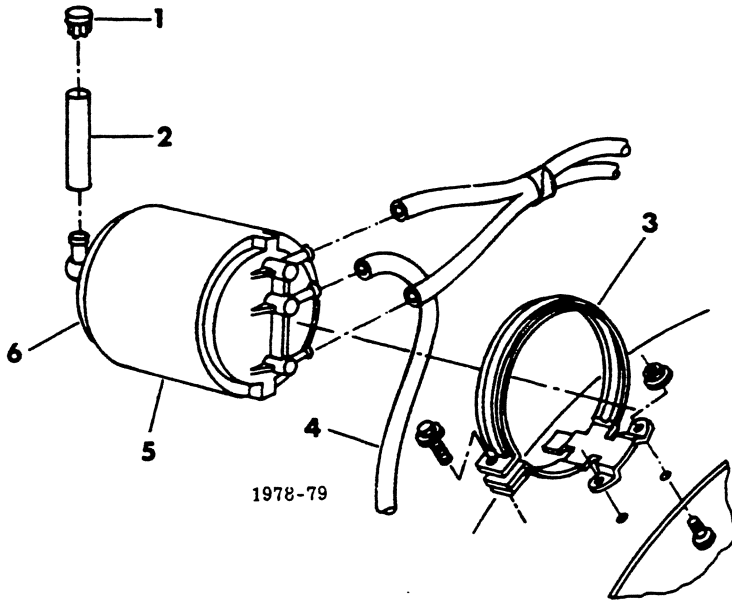
= New Part Number

Printed in U.S.A.

June, 1982

8325 55013

VAPOR CANISTER - SINGLE A-D-W



ITEM	PART NUMBER	QTY	MODEL	DESCRIPTION
VAPOR CANISTER - SINGLE A-D-W				
1	4041 910	1		CAP, Standpipe
2	3733 597	1		HOSE, Standpipe
3				BRACKET & STRAP, Canister Mtg.
	4027 284	1		1978-79
	4167 722	2		1980
	4027 284	2		1981
4				HOSE, Fuel Tank ECS
	4203 316	1		1978
	4002 886	1	D-W	1979
	4203 316	1	AD-AW	1979
5				CANISTER, Vapor
	3577 595	1		1978-79
	4095 823	1		1980
	4179 917	1	D1	1980 Hi Perf.
	4241 838	1		1981
6	4115 437	1		CAP, Vapor Canister Filter
	3577 586	1		FILTER, Vapor Canister
7	4167 481	1		BRACKET, Canister Mtg. 1980
8	4041 909	1		STANDPIPE
	5214 560	1	D1	Hi Perf.
9	3820 667	1		PLUG, Fuel Tank Vent
10	3733 285	1		PLUG, Carb. Bowl Vent
11	4095 825	1		ADAPTER, Canister Nipple
	4241 846	1		TUBE, Formed - Bowl Vent

NOTE: The following part is not illustrated.

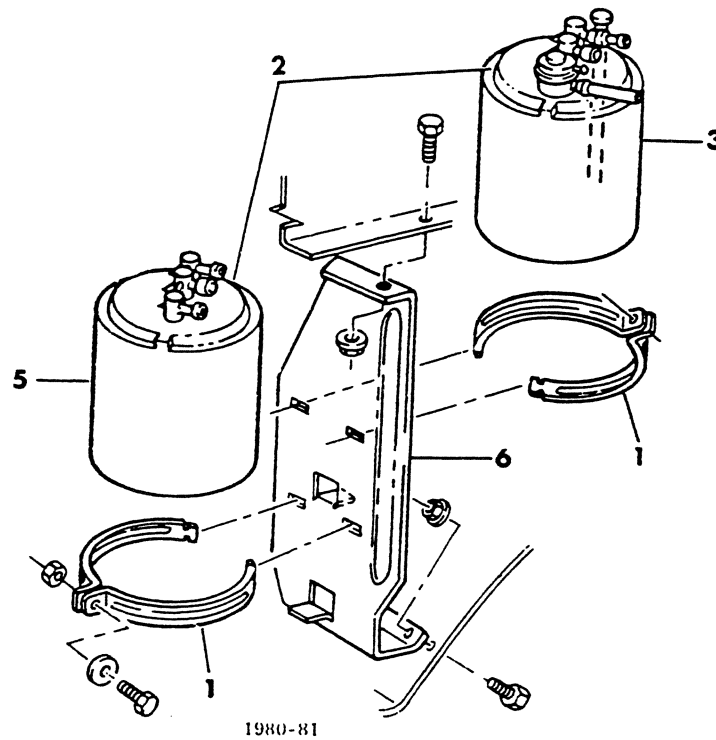
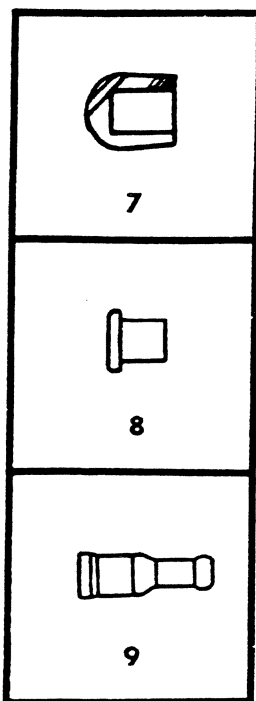
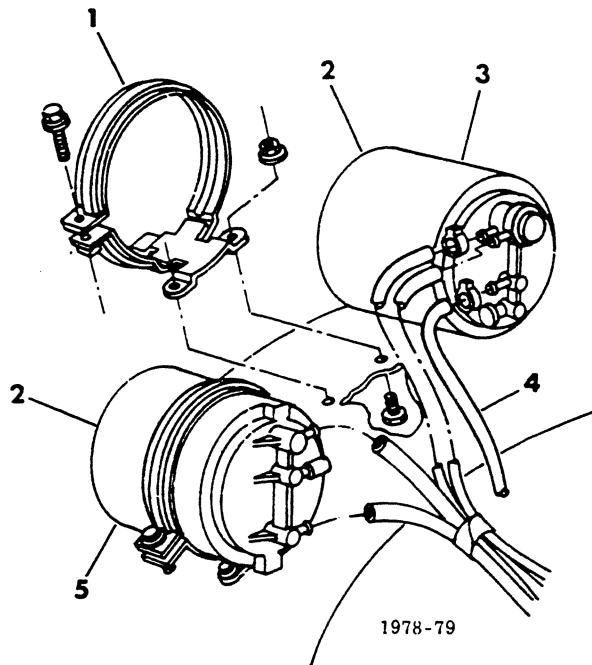
LIGHT	A = All Sport Utility (Ramcharger).	B = All Compact Models.	D = Conventional Cab.
DUTY	AD = 2 Wheel Drive Only (Ramcharger).	CB-MB = Compact Front Section Only.	W = Conventional Cab 4 Wheel Drive.
CODES:	AW = 4 Wheel Drive Only (Ramcharger).	P = Forward Control Chassis.	M = Motor Home.

MEDIUM-HEAVY CODES: XNT = Low Cab Forward. D = Conventional Cab. S = School Bus. W = 4-Wheel Drive.

AR=Use as Required # =New Part Number Printed in U.S.A. June, 1982

8325 560

VAPOR CANISTER - DUAL
A-D-W



ITEM	PART NUMBER	QTY	MODEL	DESCRIPTION
VAPOR CANISTER - DUAL A-D-W				
1				BRACKET & STRAP, Canister Mtg.
	4027 284	2		1978-79
	4167 722	4		1980
	4027 284	2		1981
2	4115 437	1		CAP, Vapor Canister Filter
	3577 586	1		FILTER, Vapor Canister
3				CANISTER, Vapor - Secondary
	4089 188	1		1978
	4116 877	1		1979
	4095 823	1	D1,2-W1	225 Eng. w/Cat. Conv. LDC & HDC 1980
	4095 823	1	D-W1,2	318 Eng. 2 Bbl. w/18 Gal. Fuel Tank LDC 1980
	4095 823	1	D2	318 Eng. 2 Bbl. w/21 Gal. Fuel Tank LDC 1980
	4095 823	1	D1	318 Eng. 4 Bbl. LDC 1980
	4095 823	1	D-W1,2-AW1	360 Eng. 4 Bbl. LDC 1980
	4095 823	1	AD	225 Eng. LDC 1980
	4095 823	1	AD-AW	318 Eng. 2 Bbl. w/24 Gal. Fuel Tank LDC 1980
	4095 823	1	AD	318 & 360 Eng. 4 Bbl. LDC 1980
	4095 824	1	D-W1,2	318 Eng. 2 Bbl. w/Dual Fuel Tanks LDC 1980
	4095 824	1	AD-AW	318 Eng. 2 Bbl. w/36 Gal. Fuel Tank LDC 1980
	4041 226	1		w/Calif. 1980
	4241 838	1		1981
4				HOSE, Fuel Tank ECS
	4203 316	1		1978
	4002 886	1	D-W	1979
	4203 316	1	AD-AW	1979
5				CANISTER, Vapor - Primary
	3577 595	1		1978-79
	4164 353	1		1980
	4041 226	1		1980 w/Calif.
	4241 838	1		1981
6	4167 481	1		BRACKET, Canister Mtg. 1980
7	3820 667	1		PLUG, Fuel Tank Vent
8	3733 285	1		PLUG, Carb. Bowl Vent
9	4095 825	1		ADAPTER, Canister Nipple
NOTE: The following part is not illustrated.				
	4241 846	1		TUBE, Formed - Bowl Vent

LIGHT	A = All Sport Utility (Ramcharger).	B = All Compact Models.	D = Conventional Cab.
DUTY	AD = 2 Wheel Drive Only (Ramcharger).	CB-MB = Compact Front Section Only.	W = Conventional Cab 4 Wheel Drive.
CODES:	AW = 4 Wheel Drive Only (Ramcharger).	P = Forward Control Chassis.	M = Motor Home.

MEDIUM-HEAVY CODES: XNT = Low Cab Forward. D = Conventional Cab. S = School Bus. W = 4-Wheel Drive.

AR=Use as Required

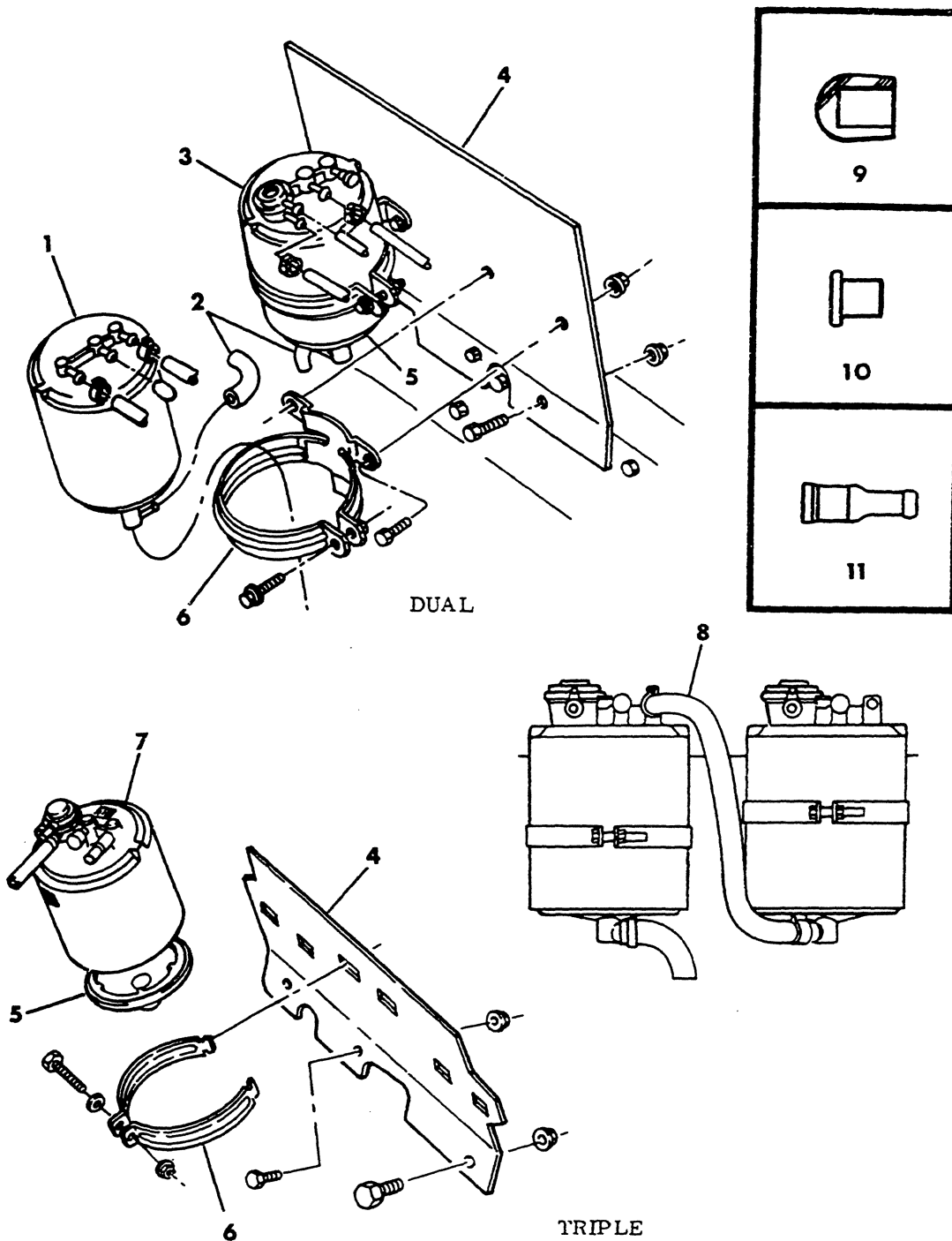
=New Part Number

Printed in U.S.A.

June, 1982

8325 575B

VAPOR CANISTER - DUAL & TRIPLE
MOTOR HOME



ITEM	PART NUMBER	QTY	MODEL	DESCRIPTION
VAPOR CANISTER - DUAL & TRIPLE MOTOR HOME				
1	3577 595	1		CANISTER, Vapor - Dual - Primary
2	3822 906	2		HOSE, Canister Drain
3				CANISTER, Vapor - Dual - Secondary
	3577 584	1		1978
	4116 877	1		1979-80
4				PLATE, Canister Mtg.
	4089 027	1		Dual Up to 5-11-79
	4117 221	1		After 5-11-79
	4167 721	1		Triple
5	4115 437	1		CAP, Canister Filter
	3577 586	1		FILTER, Vapor Canister
6				BRACKET & STRAP, Canister Mtg.
	4027 284	2		Dual 1978-79-80
	4167 722	6		Triple 1980
7	4041 226	3		CANISTER, Vapor - Triple
8				HOSE, Jump - Triple Canister
	4167 224	1		Canister 1 & 2
	4210 989	1		Canister 2 & 3
				HOSE, Fuel Tank ECS - Dual Canister (not shown)
	4026 155	1		1978
	4002 886	1		1979-80
9	3820 667	1		PLUG, Fuel Tank Vent
10	3733 285	1		PLUG, Carb. Bowl Vent
11	4095 825	1		ADAPTER, Canister Nipple

LIGHT A = All Sport Utility (Ramcharger).

B = All Compact Models.

D = Conventional Cab.

DUTY AD = 2 Wheel Drive Only (Ramcharger).

CB-MB = Compact Front Section Only.

W = Conventional Cab 4 Wheel Drive.

CODES: AW = 4 Wheel Drive Only (Ramcharger).

P = Forward Control Chassis.

M = Motor Home.

MEDIUM-HEAVY CODES: XNT = Low Cab Forward. D = Conventional Cab. S = School Bus. W = 4-Wheel Drive.

AR=Use as Required

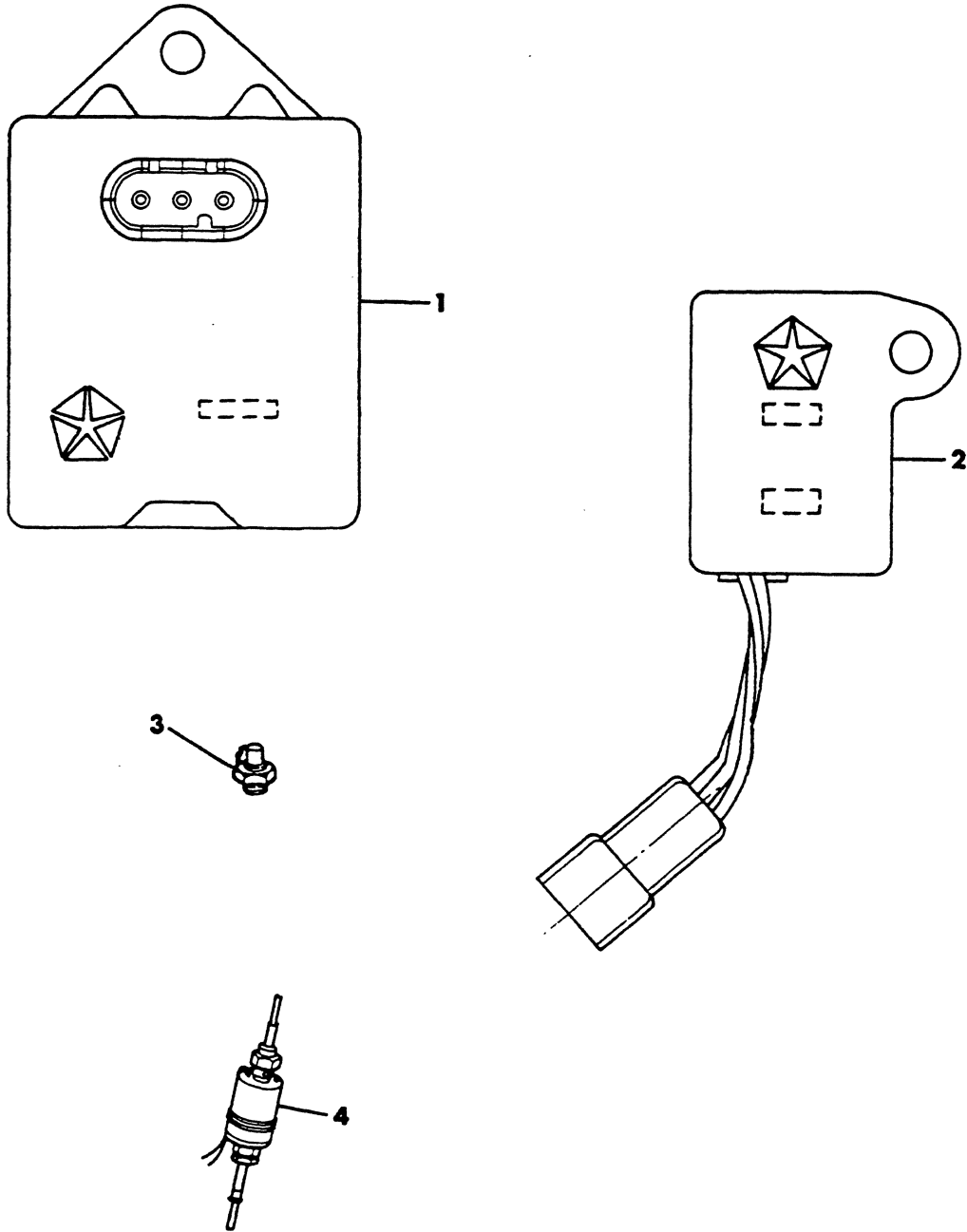
=New Part Number

Printed in U.S.A.

June, 1982

EMISSION CONTROLS & SWITCHES

8325 700A



ITEM	PART NUMBER	.QTY	MODEL	DESCRIPTION
------	-------------	------	-------	-------------

EMISSION CONTROLS & SWITCHES

1				CONTROL, EGR Time Delay
	3874 310	1		stamped 3874310
	4091 242	1		stamped 4091242
	3874 300	1		stamped 3874300
	4111 179	1		stamped 4111179
	4111 180	1		stamped 4111180
	4111 481	1		stamped 4111481
				SWITCH, Electric Speed
	3874 128	1		6 Cyl.
	3874 129	1		8 Cyl. 1978-79
	4111 925	1		8 Cyl. 1980-81
				CONTROL, Electronic Throttle
	4111 828	1		stamped 4111828
2	4162 462	1		MODULATOR, Deceleration Throttle stamped 4162462
3	4111 482	1		SWITCH, Charge Temperature
4	4114 425	1		SWITCH, Emission Maintenance Lamp

LIGHT DUTY CODES: A = All Sport Utility (Ramcharger). B = All Compact Models. D = Conventional Cab.
 AD = 2 Wheel Drive Only (Ramcharger). CB-MB = Compact Front Section Only. W = Conventional Cab 4 Wheel Drive.
 AW = 4 Wheel Drive Only (Ramcharger). P = Forward Control Chassis. M = Motor Home.

MEDIUM-HEAVY CODES: XNT = Low Cab Forward. D = Conventional Cab. S = School Bus. W = 4-Wheel Drive.

AR=Use as Required

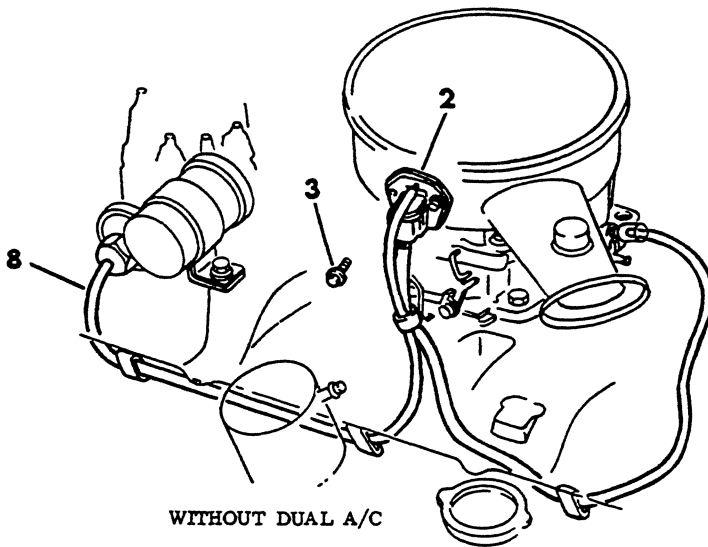
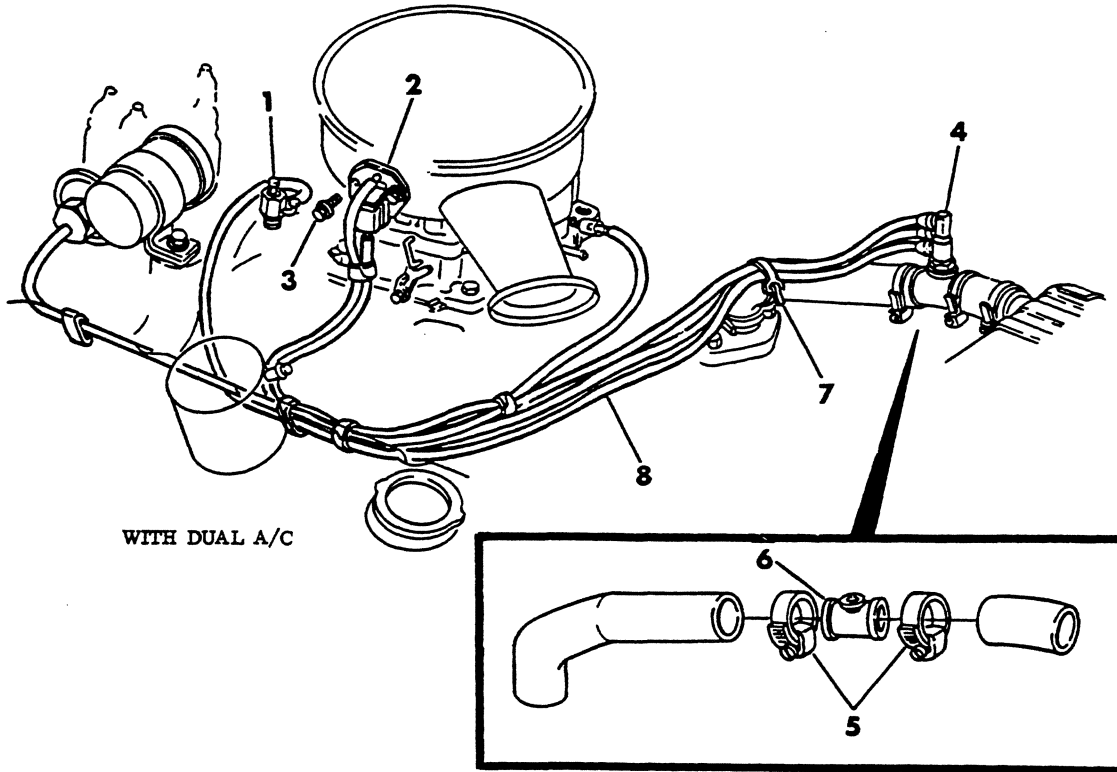
=New Part Number

Printed in U.S.A.

June, 1982

OSAC SPARK ADVANCE SYSTEM & TIDC VALVE

8325 800A



ITEM	PART NUMBER	QTY	MODEL	DESCRIPTION
OSAC SPARK ADVANCE SYSTEM & TIDC VALVE				
1				CONNECTOR (refer to Illus. 520)
2				VALVE, OSAC
	4091 994	1		Hot Pink Decal
	3755 582	1		Lt. Green Decal
	3755 600	1		White Decal 1978
	4111 202	1		White Decal 1979-80-81
	4111 935	1		Black Decal
	3755 711	1		Blue Decal
	3755 727	1		Orange Decal
	3656 646	1		COVER, OSAC Valve (not shown)
3	6022 834	2		SCREW, 1/4 - 20 x .75
4	3780 126	1	B1,2,3	VALVE, TIDC 318 & 360 Eng.
5	2448 763	2		CLAMP
6	3751 777	1	B1,2,3	ADAPTER, TIDC Valve 318 & 360 Engine
7				STRAP (not serviced)
8		1		HARNES, Hose (not serviced)

LIGHT	A = All Sport Utility (Ramcharger).	B = All Compact Models.	D = Conventional Cab.
DUTY	AD = 2 Wheel Drive Only (Ramcharger).	CB-MB = Compact Front Section Only.	W = Conventional Cab 4 Wheel Drive.
CODES:	AW = 4 Wheel Drive Only (Ramcharger).	P = Forward Control Chassis.	M = Motor Home.

MEDIUM-HEAVY CODES: XNT = Low Cab Forward. D = Conventional Cab. S = School Bus. W = 4-Wheel Drive.

AR=Use as Required

=New Part Number

Printed in U.S.A.

June, 1982

EMISSION WIRING

ILLUSTRATION NOT AVAILABLE AT TIME OF PUBLICATION

ITEM	PART NUMBER	QTY	MODEL	DESCRIPTION
EMISSION WIRING				
	4085 238	1		WIRING, EGR Timer & Elec. Choke 1978
			D1-AD1	318 Eng. 2 Bbl. w/Air Pump
			D2-W1,2	318 Eng. 2 Bbl. w/Calif.
			AW1	318 Eng. 2 Bbl. MDC
			D1-AD1	360 Eng. 2 Bbl. w/Air Pump LDC & MDC
			D2-W1,2-AW1	360 Eng. 2 Bbl. MDC
			D1	400 Eng. LDC
			D-W1,2-AW1	440-1 Eng. MDC
	4114 184	1		WIRING, EGR Timer, Vacuum Solenoid, Elec. Choke & Purge Switch (tagged 4034716) 1978
			B1,2,3	318 Eng. 2 Bbl. w/Calif w/A 230 Trans. w/36 Gal. Fuel Tank
			B1,2,3	318 Eng. 2 Bbl. w/Air Pump w/o Calif w/A 230 Trans. w/36 Gal. Fuel Tank
			B1	360 Eng. 2 Bbl. w/Air Pump LDC
			B2,3	360 Eng. 2 Bbl. w/Air Pump MDC
			B1	400 Eng. LDC
			B2,3	440-1 Eng. MDC
	4034 042	1		WIRING, Throttle Kicker Speed Switch 1978
			B2,3-CB3	225 Eng. 2 Bbl. HDC
			B2,3-CB3-MB	360 Eng. 2 Bbl. HDC
			CB4	360-3 Eng. w/Calif. HDC
			B2,3-CB3-MB	440-1 Eng. w/Calif. HDC
			CB-MB4	440-3 Eng. w/Calif. HDC
			M4,5,6	440-3 Eng. w/Calif. HDC
	4034 059	1		WIRING, Throttle Kicker Speed Switch 1978
			A-D-W	225 Eng. 2 Bbl. HDC
			D1	360 Eng. 4 Bbl. Hi Perf.
			D-W-AW1	440-1 Eng. w/Calif. HDC
	4114 589	1		WIRING, EGR & Elec. Choke (tagged 4114593) 1979
			B1,3	225 Eng. LDC
			D1,2-W1-AD1	225 Eng. LDC
	4114 594	1		WIRING, EGR & Elec. Choke (tagged 4114590) 1979
			B1,2,3	318 Eng. 2 Bbl. LDC
			B2,3	360 Eng. 2 Bbl. LDC
			B2,3	318 & 360 Eng. 4 Bbl. MDC
			A-D-W1,2	318 & 360 Eng. 2 Bbl. LDC
			A-D-W1,2	318 & 360 Eng. 4 Bbl. MDC
			D1	360 Eng. 4 Bbl. Hi Perf.
	4114 557	1		WIRING, EGR Maintenance Lamp 1979
			B3	All Eng. HDC
			CB-MB	All Eng.
	4114 559	1		WIRING, EGR Maintenance Lamp 1979
			D-W2,3,4	All Eng.
	4114 591	1		WIRING, Throttle Kicker (tagged 4114592) 1979
			B2,3-CB3-A-D	360 Eng. HDC
			MB3	360 Eng. 4 Bbl.
			CB-MB4-D-W4	All Eng.
			MB3	440-1 Eng.
			W1,2	360 Eng. 2 Bbl. HDC

LIGHT	A = All Sport Utility (Ramcharger).	B = All Compact Models.	D = Conventional Cab.
DUTY	AD = 2 Wheel Drive Only (Ramcharger).	CB-MB = Compact Front Section Only.	W = Conventional Cab 4 Wheel Drive.
CODES:	AW = 4 Wheel Drive Only (Ramcharger).	P = Forward Control Chassis.	M = Motor Home.

MEDIUM-HEAVY CODES: XNT = Low Cab Forward. D = Conventional Cab. S = School Bus. W = 4-Wheel Drive.

AR=Use as Required

= New Part Number

Printed in U.S.A.

June, 1982

1978-81 LIGHT DUTY TRUCK PARTS CATALOG

EMISSION SYSTEMS

ITEM	PART NUMBER	QTY	MODEL	DESCRIPTION
EMISSION WIRING				
			W1,2,3	360 Eng. 4 Bbl. HDC
			M3,4	360-3 Eng.
			M4,5,6	440-3 Eng.
4162 685	1			WIRING, EMR Lamp 1980
			B3-CB-MB	360 Eng. 4 Bbl. w/o Cat. Conv. HDC
			CB-MB	360-3 Eng. w/o Cat. Conv. HDC
4162 686	1			WIRING, EMR Lamp 1980
			D-W2,3,4	360 Eng. 4 Bbl. w/o Cat. Conv. HDC
4162 684	1			WIRING, EMR Lamp 1980
			M3,4	360-3 Eng. w/o Cat. Conv. HDC
4162 601	1			WIRING, Emissions (tagged 4162610) 1980
			B1,2	225 Eng. LDC
			D1,2-W1-AD1	225 Eng. LDC
4162 602	1			WIRING, Emissions (tagged 4162611) 1980
			B1-D1-AD1	225 Eng. LDC
			B2-D1,2-W1	225 Eng. HDC
4162 605	1			WIRING, Emissions 1980
			CB-MB	360-3 Eng. w/Calif. HDC
4162 613	1			WIRING, Emissions (tagged 4162604 or 4162618) 1980
			B1,2,3	318 Eng. 2 Bbl. LDC
			B1,2,3	360 Eng. 4 Bbl. LDC
			A-D-W1,2	318 Eng. 2 Bbl. LDC
			A-D-W1,2	360 Eng. 4 Bbl. LDC
			D1-AD1	318 Eng. 4 Bbl. LDC
			D1	360 Eng. 4 Bbl. Hi Perf.
4162 616	1			WIRING, Emissions (tagged 4162607 or 4162609) 1980
			B1	318 Eng. 4 Bbl. LDC
			B2,3-D1,2-W1	318 & 360 Eng. 4 Bbl. MDC
			W1,2-AW1	360 Eng. 4 Bbl. MDC
4162 872	1			WIRING, Emissions (tagged 4162873) 1980
			B2-D1	225 Eng. w/Calif.
4162 790	1			WIRING, Emissions 1980
			B3-CB	318 Eng. 4 Bbl. HDC
			B3	360 Eng. HDC
			B2	360 Eng. 4 Bbl. Canada & Export HDC
			CB-MB	360 Eng. 4 Bbl. HDC
			CB-MB	360-3 Eng. HDC
4162 791	1			WIRING, Emissions (tagged 4162792) 1980
			D-W2,3,4	318 & 360 Eng. 4 Bbl. HDC
			D-W-AW1	360 Eng. 2 Bbl. HDC
			M3,4	360-3 Eng. HDC
4114 557	1			WIRING, EGR Maintenance Lamp 1980
			B3-CB-MB	360 Eng. 4 Bbl. w/Calif. w/o Cat. Conv. HDC
			CB-MB	360-3 Eng. w/Calif. w/o Cat. Conv. HDC
4114 559	1			WIRING, EGR Maintenance Lamp 1980
			D-W2,3,4	360 Eng. 4 Bbl. w/Calif. w/o Cat. Conv. HDC
4162 710	1			WIRING, Emissions 1981
			B1,2,3	318 Eng. 2 Bbl. LDC
			B2,3	318 Eng. 4 Bbl. w/Auto Trans. w/o Calif. LDC

LIGHT A = All Sport Utility (Ramcharger). B = All Compact Models. D = Conventional Cab.
DUTY AD = 2 Wheel Drive Only (Ramcharger). CB-MB = Compact Front Section Only. W = Conventional Cab 4 Wheel Drive.
CODES: AW = 4 Wheel Drive Only (Ramcharger). P = Forward Control Chassis. M = Motor Home.

MEDIUM-HEAVY CODES: XNT = Low Cab Forward. D = Conventional Cab. S = School Bus. W = 4-Wheel Drive.

AR=Use as Required

=New Part Number

Printed in U.S.A.

June, 1982

ITEM	PART NUMBER	QTY	MODEL	DESCRIPTION
			D1-AD1	318 Eng. Canada LDC
			B2,3	360 Eng. 4 Bbl. w/o Calif. LDC
	4162 713	1		WIRING, Emissions 1981
			B1,2,3	318 & 360 Eng. 4 Bbl. w/Calif. LDC
			D-W1,2-AW1	318 & 360 Eng. 4 Bbl. w/Calif. LDC
	4162 714	1		WIRING, Emissions 1981
			B2,3-MB2,3	318 Eng. 4 Bbl. HDC
			B2,3-CB-MB	360 Eng. 4 Bbl. HDC
			CB-MB	360-3 Eng. HDC
	4162 986	1		WIRING, Emissions 1981
			D-W2,3,4	360 Eng. 4 Bbl. w/o Cat. Conv. HDC
	4162 679	1		WIRING, Emissions 1981
			D2,3-W2,3,4	318 Eng. 4 Bbl. HDC
			D-W2,3,4	360 Eng. 4 Bbl. HDC
			D-W1-AW1	360 Eng. 4 Bbl. Export HDC
	4162 733	1		WIRING, Emissions 1981
			M3,4,5	360-3 Eng.
	4162 678	1		WIRING, Emissions 1981
			A-D-W1,2	318 Eng. 2 Bbl. LDC
			D-W1,2-AW1	318 Eng. 4 Bbl. w/Auto. Trans. w/o Calif. LDC
			D-W1,2	360 Eng. 4 Bbl. w/o Calif. LDC

LIGHT	A = All Sport Utility (Ramcharger).	B = All Compact Models.	D = Conventional Cab.
DUTY	AD = 2 Wheel Drive Only (Ramcharger).	CB-MB = Compact Front Section Only.	W = Conventional Cab 4 Wheel Drive.
CODES:	AW = 4 Wheel Drive Only (Ramcharger).	P = Forward Control Chassis.	M = Motor Home.

MEDIUM-HEAVY CODES: XNT = Low Cab Forward. D = Conventional Cab. S = School Bus. W = 4-Wheel Drive.

AR=Use as Required

= New Part Number

Printed in U.S.A.

June, 1982