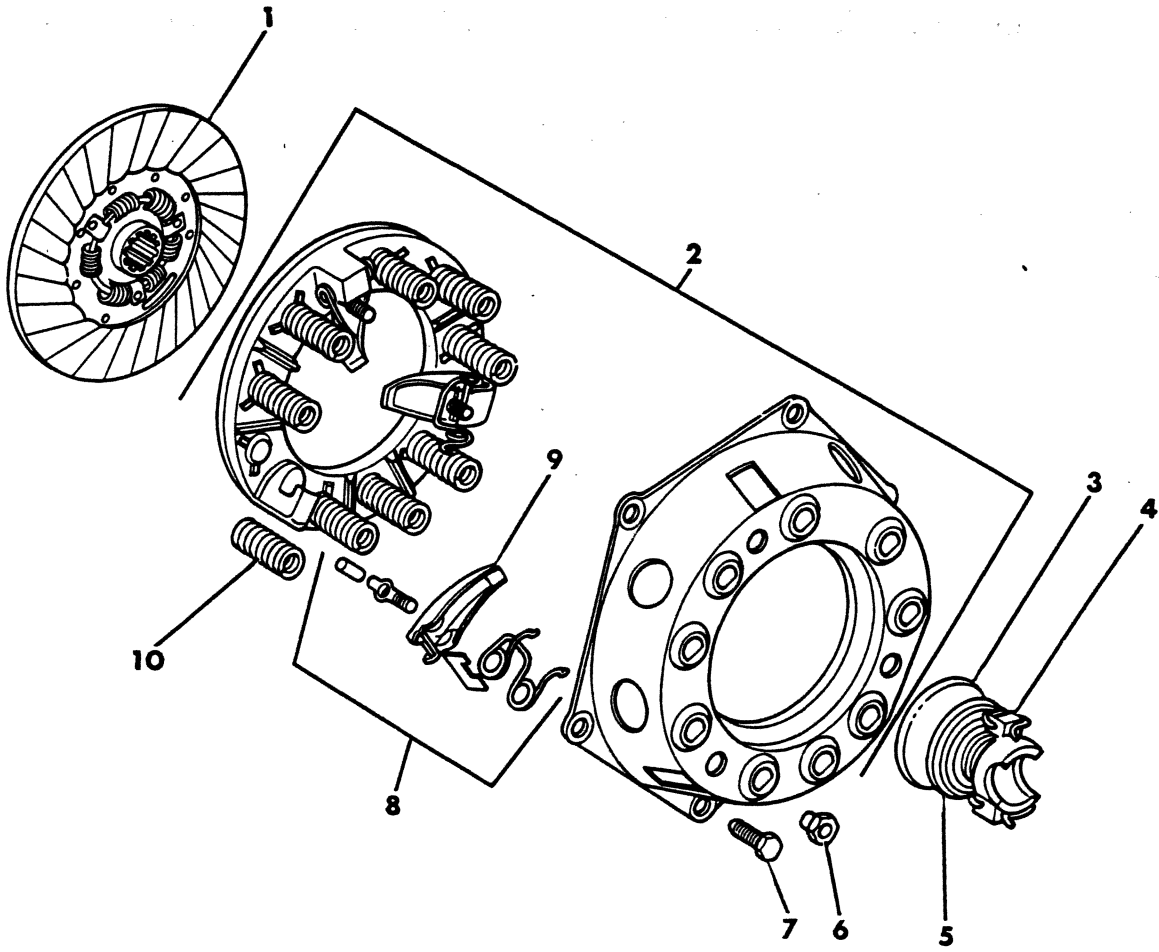


**GROUP 6 - CLUTCH**

CLUTCH CONTROLS D1,2,3,4-W1,2,3,4-AD1-AW1 - WITH 225 ENGINE .....	Fig. 6-400
CLUTCH CONTROLS - B1,2,3-CB3-MB2 .....	Fig. 6-700
CLUTCH CONTROLS - D1,2,3,4-W1,2,3,4-AD1-AW1 WITH 318,360,400,440 AND MMC DIESEL ENGINE .....	Fig. 6-500
CLUTCH HOUSING AND PAN A-B-D-W1,2,3,4-CB3-MB2 .....	Fig. 6-200
CLUTCH PEDAL D1,2,3,4-W1,2,3,4-AD1-AW1 .....	Fig. 6-300
CLUTCH PEDAL - B1,2,3-CB3-MB2 .....	Fig. 6-600
CLUTCH, 10",11",12" LIGHT DUTY .....	Fig. 6-100

8306 100

CLUTCH, 10",11",12"  
LIGHT DUTY



ITEM	PART NUMBER	QTY	MODEL	DESCRIPTION
<b>CLUTCH, 10",11",12" LIGHT DUTY</b>				
	2495 052	1	All	LEVER PACKAGE Consists Of: 3 -- Levers 3 -- Strut 3 -- Pin 3 -- Eyebolt 3 -- Spring 3 -- Nut
1	2908 473	1	B1,2-D1	CLUTCH DISC, 10" Clutch, w/225 Eng.
	3743 424	1	B-D-W1,2	10-1/2" Clutch, w/318 and MMC DIESEL Eng.
	3743 424	1	MB2	10-1/2" Clutch, All Engines - 1981
	2908 400	1	A-B-D-W-CB	11" Clutch, w/225 Eng.
	2909 451	1	A-B-D-W	11" Clutch, w/318 Eng.
	3633 883	1	A-B-D-W-CB	11" Clutch, w/360 Eng.
	2909 452	1	AW-D-W	12" Clutch, w/400,440 Eng.
2	2239 683	1	B1,2-D1	CLUTCH*COVER w/PLATE, 10" Clutch, w/225 Eng.
	3681 615	1	B-D-W1,2	10-1/2" Clutch, w/318 and MMC DIESEL Eng.
	3681 615	1	MB2	10-1/2" Clutch, All Engines - 1981
	3496 815	1	ALL	11" Clutch, w/225,318,360 Eng.
	3633 836	1	AW-D-W	12" Clutch, w/400,440 Eng.
3	658 998	1	All	BEARING, Clutch Release
4	2073 687	2	All	SPRING, Bearing Pull Back
5	2405 077	1	All	BEARING w/SLEEVE, Clutch Release
6				NUT (Serviced in Item 8)
7	6029 060	6	B1,2-D1	SCREW, Cover to Flywheel, 10" Clutch
	314 926	6	A-B-D-W-MB	10-1/2", 11" Clutch
	6029 071	6	AW-D-W	12" Clutch
8	2495 052	1	All	LEVER PACKAGE, w/10",11",12" Clutch
9	3733 484	3	AW-D-W	LEVER, 12" Clutch, w/400,440 Eng.
	3410 993	3	All	EYE BOLT, Clutch Pressure Spring
10				SPRING, Clutch Pressure,
	864 397	6	B1,2-D1	10" Clutch, w/225 Eng., Color Orange
	1936 137	3	B1,2-D1	10" Clutch, w/225 Eng., Color Black
	3410 983	6	A-B-D-W	11" Clutch, w/225 Eng., Color Red
	3410 982	3	A-B-D-W	11" Clutch, w/225 Eng., Color Green
	3410 983	9	A-B-D-W	11" Clutch, w/318,360 Eng., Color Red
	864 397	3	A-B-D-W	11" Clutch, w/318,360 Eng., Color Orange
	1936 137	6	AW-D-W	12" Clutch, w/400,440 Eng., Color Black
	864 397	6	AW-D-W	12" Clutch, w/400,440 Eng., Color Orange

<b>LIGHT</b>	A = All Sport Utility (Ramcharger).	B = All Compact Models.	D = Conventional Cab.
<b>DUTY</b>	AD = 2 Wheel Drive Only (Ramcharger).	CB-MB = Compact Front Section Only.	W = Conventional Cab 4 Wheel Drive.
<b>CODES:</b>	AW = 4 Wheel Drive Only (Ramcharger).	P = Forward Control Chassis.	M = Motor Home.

**MEDIUM-HEAVY CODES:** XNT = Low Cab Forward. D = Conventional Cab. S = School Bus. W = 4-Wheel Drive.

AR=Use as Required

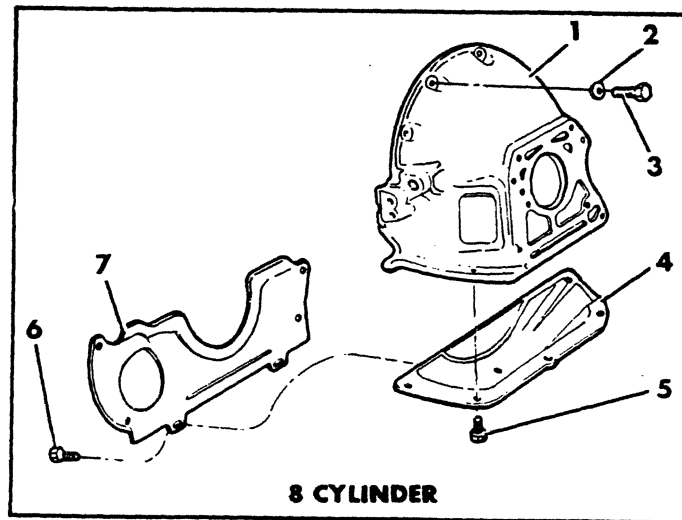
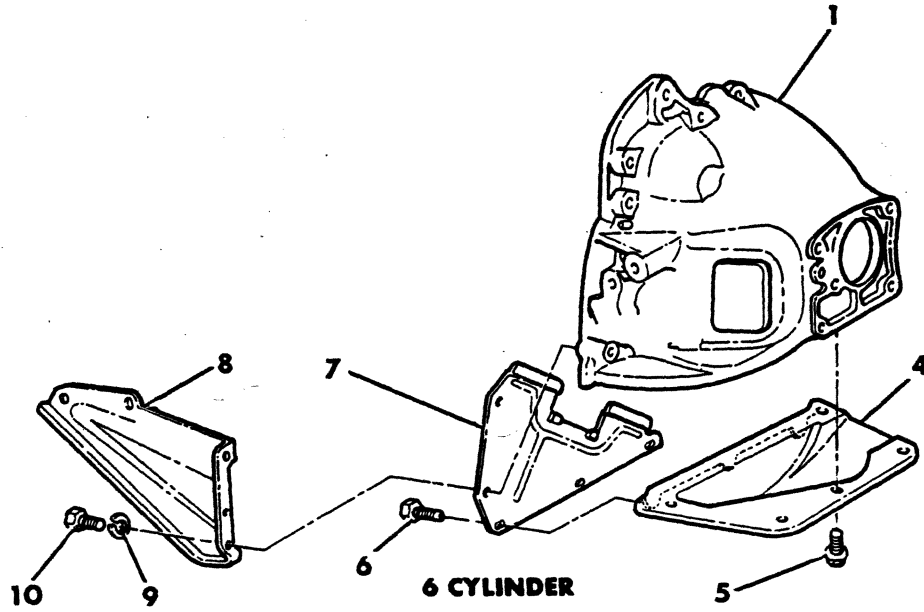
# = New Part Number

Printed in U.S.A.

June, 1982

8306 200

CLUTCH HOUSING AND PAN  
A-B-D-W1,2,3,4-CB3-MB2



ITEM	PART NUMBER	QTY	MODEL	DESCRIPTION	
<b>CLUTCH HOUSING AND PAN</b>					
<b>A-B-D-W1,2,3,4-CB3-MB2</b>					
1	3743 645	1	B1,2-D1	CLUTCH HOUSING, 10" Clutch, w/225 Eng. - 1978-79-80	
	4210 706	1	B1,2-D1	1981	
	3743 857	1	B1,2-D1	10-1/2" Clutch, w/318 Eng. - 1978-79-80	
	4210 711	1	B1,2-D1-MB2	10-1/2" Clutch, All Engines - 1981	
	4039 319	1	D-W1,2	10-1/2" Clutch, w/MMC DIESEL Eng.	
	3743 627	1	A-B-D-W-CB	11" Clutch, w/225 Eng. - 1978-79-80	
	4210 707	1	D-W1,2,3	1981	
	3893 729	1	A-B-D-W-CB	11" Clutch, w/318,360 Eng. - 1978-79-80	
	4210 710	1	AW-D-W	1981	
	3491 637	1	AW-D-W	12" Clutch, w/400,440 Eng.	
	4026 540	AR	D-W1,2	SHIM, Cl. Hsg. Alignment, w/10-1/2" Cl., w/MMC DIESEL Eng.	
	2		AR	All	WASHER, 3/8" (Not Serviced)
				All	BOLT, Clutch Hsg. to Cyl. Block
	3	9416 171	AR		3/8-16 x 1-1/4"
		6027 865	AR		3/8-16 x 1-3/8"
		6022 266	AR		3/8-16 x 1-1/2"
		454 467	AR		3/8-16 x 1-3/4"
9419 882		AR		3/8-16 x 2"	
181 143		AR		7/16-14 x 1-3/4"	
9425 686		AR		7/16-14 x 2"	
181 146		AR		7/16-14 x 2-1/4"	
181 151		AR		7/16-14 x 3-1/4"	
				SCREW, Clutch Hsg. to Trans. Case	
181 186		AR		9/16-12 x 1-1/2"	
181 188	AR		9/16-12 x 1-3/4"		
9418 275	AR		9/16-12 x 2"		
4	2129 885	1	B1,2-D1	PAN, Housing, w/10" Clutch, w/225 Eng.	
	2843 892	1	B1,2-D1-MB2	10-1/2" Clutch, w/318 Eng.	
	4037 873	1	D-W1,2	10-1/2" Clutch, w/MMC DIESEL Eng.	
	2863 480	1	All	11" Clutch, All Engines	
	2780 602	1	AW-D-W	12" Clutch	
5	6031 413	5	All	SCREW, w/WASHER	
6	187 058	AR		SCREW, 1/4-20 x 3/8"	
	6023 092	AR		1/4-20 x 1/2"	
	6028 581	AR		5/16-18 x 5/8"	
7	4028 186	1	B1,2-D1	SEAL, Pan Dust, w/10" Clutch, w/225 Eng.	
	2892 911	1	B1,2-D1-MB2	10-1/2" Clutch, w/318 Eng.	
	2955 217	1	All	11" Clutch, w/225 Eng.	
	2955 218	1	A-B-D-W	11" Clutch, w/318-360 Eng.	
8	4058 205	1	B1,2-D1	STRUT, 10" Clutch, w/225 Eng.	
9	6023 050	2	B1,2-D1	WASHER, 7/16"	
10	181 140	2	B1,2-D1	BOLT, 7/16-14 x 1-3/8"	

LIGHT A = All Sport Utility (Ramcharger).

B = All Compact Models.

D = Conventional Cab.

DUTY AD = 2 Wheel Drive Only (Ramcharger).

CB-MB = Compact Front Section Only.

W = Conventional Cab 4 Wheel Drive.

CODES: AW = 4 Wheel Drive Only (Ramcharger).

P = Forward Control Chassis.

M = Motor Home.

MEDIUM-HEAVY CODES: XNT = Low Cab Forward. D = Conventional Cab. S = School Bus. W = 4-Wheel Drive.

AR=Use as Required

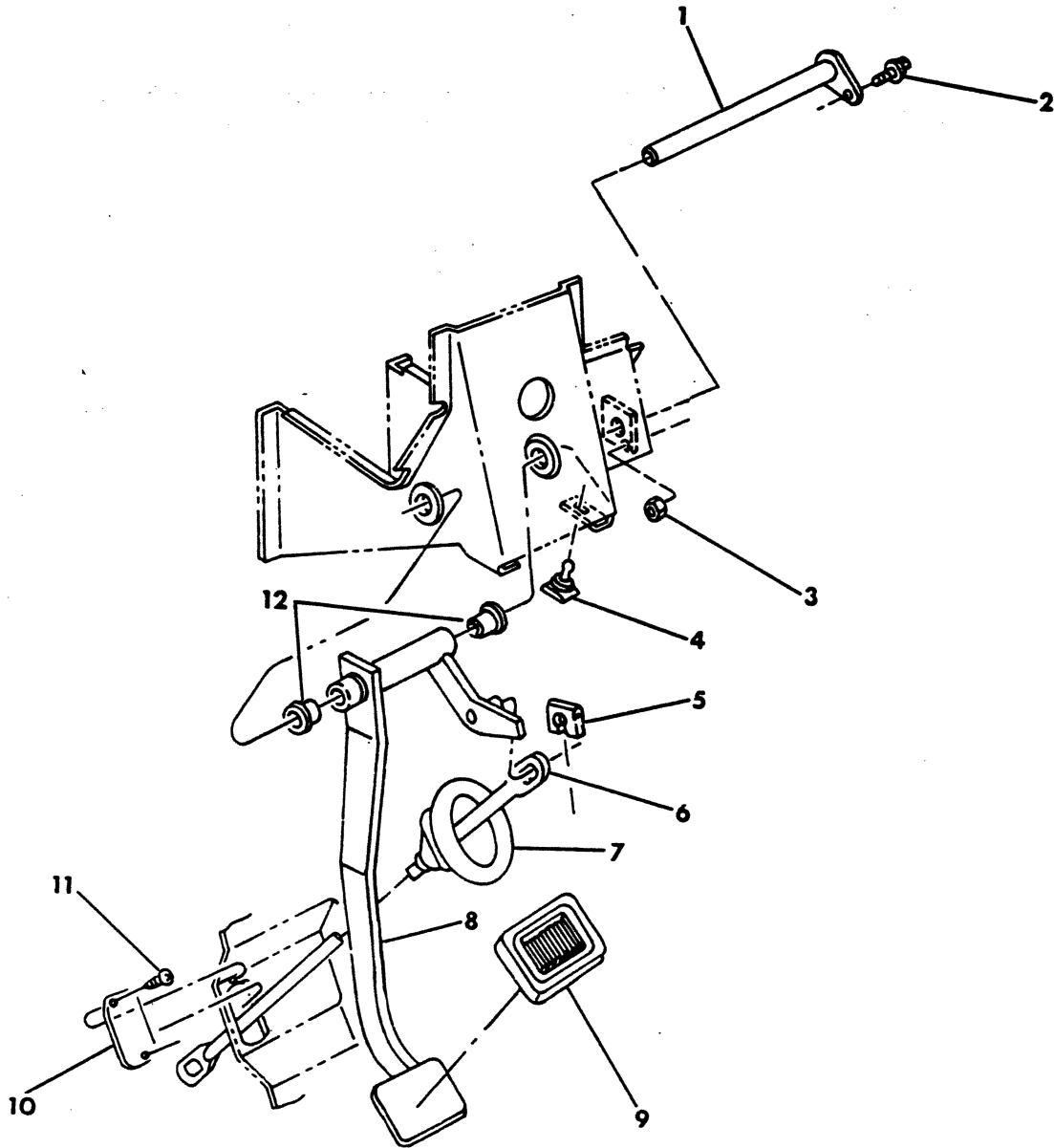
# = New Part Number

Printed in U.S.A.

June, 1982

8306 300

CLUTCH PEDAL  
D1,2,3,4-W1,2,3,4-AD1-AW1



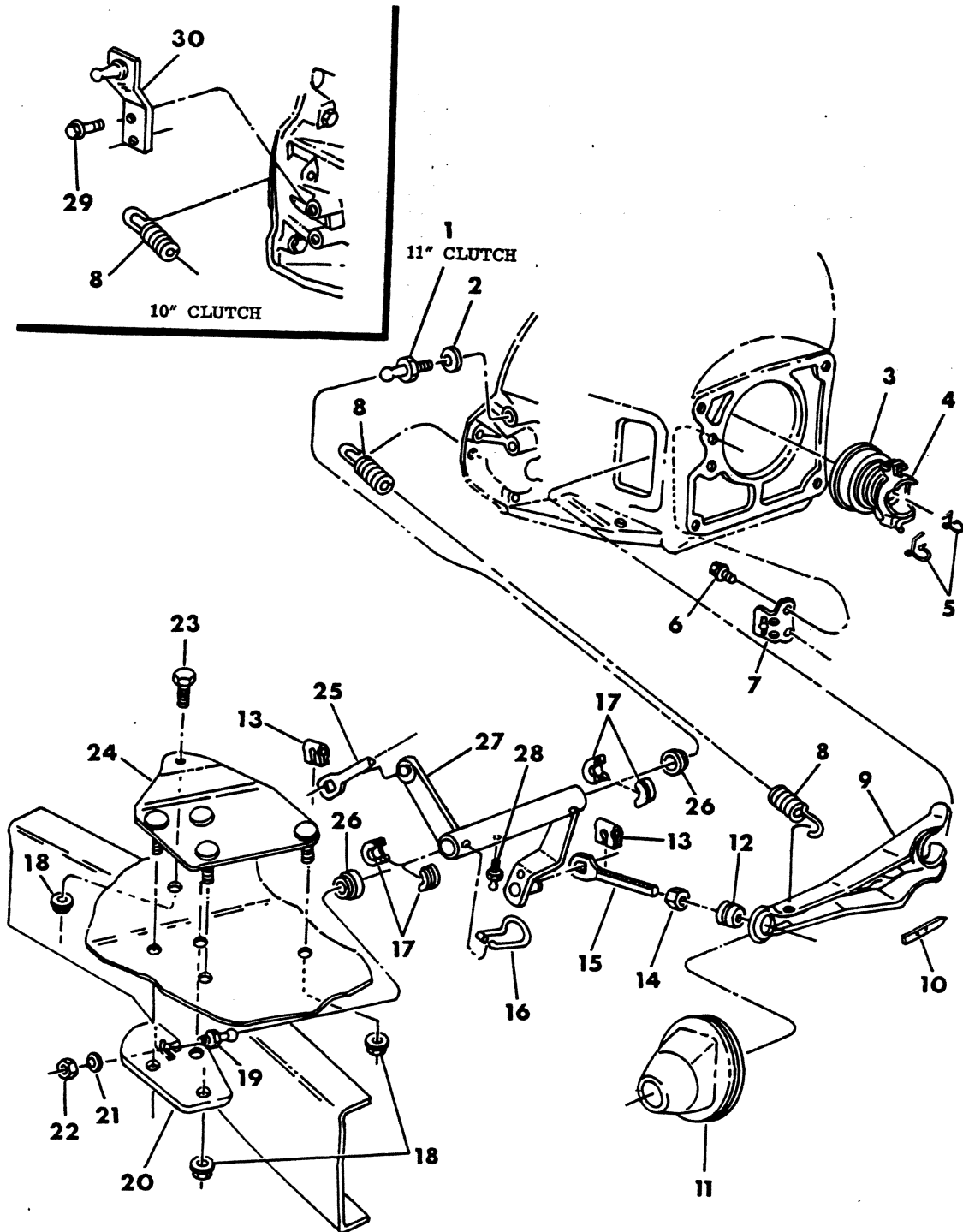
ITEM	PART NUMBER	QTY	MODEL	DESCRIPTION
<b>CLUTCH PEDAL</b>				
<b>D1,2,3,4-W1,2,3,4-AD1-AW1</b>				
1	3491 621	1	All	SHAFT, Clutch Pedal
2	6024 067	1	All	SCREW, 10-24 x 3/4"
3				NUT, Lock (Not Serviced)
4	2266 820	1	All	BUMPER, Clutch Pedal
5	2405 085	1	All	WASHER, Lever Rod Spring
6	3491 626	1	All	ROD, Clutch Pedal - 1978-79-80
	4210 694	1	All	1981
7	3732 938	1	All	BOOT, Clutch Pedal Rod
8	4030 963	1	All	PEDAL, Clutch - 1978-79-80
	4210 684	1	All	1981
9	3492 833	1	All	PAD, Clutch Pedal
10				PLATE, Cover, u/w Auto. Trans. (Not Serviced)
11	9414 712	2	All	SCREW, Cover 8-32 x 1/2"
12	1799 558	2	All	BUSHING, Clutch Pedal Hub
13	2220 653	1	All	EXTENSION, Cowl Plenum Panel Support To Panel Bracket

<b>LIGHT</b>	A = All Sport Utility (Ramcharger).	B = All Compact Models.	D = Conventional Cab.
<b>DUTY</b>	AD = 2 Wheel Drive Only (Ramcharger).	CB-MB = Compact Front Section Only.	W = Conventional Cab 4 Wheel Drive.
<b>CODES:</b>	AW = 4 Wheel Drive Only (Ramcharger).	P = Forward Control Chassis.	M = Motor Home.
<b>MEDIUM-HEAVY CODES:</b> XNT = Low Cab Forward. D = Conventional Cab. S = School Bus. W = 4-Wheel Drive.			
AR=Use as Required	# =New Part Number	Printed in U.S.A.	June, 1982

CLUTCH CONTROLS

D1,2,3,4-W1,2,3,4-AD1-AW1 - WITH 225 ENGINE

8305 400





ITEM	PART NUMBER	QTY	MODEL	DESCRIPTION
<b>CLUTCH CONTROLS</b>				
<b>D1,2,3,4-W1,2,3,4-AD1-AW1 - WITH 225 ENGINE</b>				
1	2461 766	1		STUD, Pivot, w/11" Clutch
2	6028 776	1	All	WASHER, Pivot Stud, Coned 9/16
3	658 998	1	All	BEARING, Clutch Release
4	2405 077	1	All	BEARING w/SLEEVE, Cl. Release, Up To 3-1-1979
	4130 643	1	All	After 3-1-1979
5	2073 687	2	All	SPRING, Cl. Release Brg. Pull Back
6	181 086	2	All	SCREW, 5/16-18 x 3/4"
7	3743 930	1		PIVOT, Release Fork, w/10" clutch - 1978
	4058 872	1		1979-80
	2961 312	1		w/11" Clutch - 1978-79-80
	4210 695	1		w/10" Clutch - 1981
8	2516 771	1	All	SPRING, Cl. Release Fork Return - 1978-79-80
	4202 859	1	All	1981
9	3743 998	1	All	FORK w/SPRING, Clutch Release - 1978-79-80
	4210 697	1	All	1981
10	2823 559	1	All	SPRING, Cl. Release Fork - 1978-79-80
	2200 349	1	All	1981
	6023 660	2	All	RIVET, Cl. Release Fork Spring
11	3515 300	1	All	SEAL, Cl. Release Fork
12	2401 740	1	All	SWIVEL, Cl. Release Fork Rod
13	2405 085	2	All	WASHER, Fork Rod Spring
14	6030 979	1	All	NUT, Cl. Release Fork Adj.
15	3491 954	1	All	ROD, Cl. Release Fork - 1978-79-80
	4210 699	1	All	1981
16	2401 910	1	All	SNAP RING, Pivot Bearing
17	2265 938	4	All	BEARING, Cl. Torque Shaft Pivot - 1978-79-80
	4210 690	4	All	1981
18	6025 020	5	All	NUT, 3/8-16
19	2461 766	1	All	STUD, Pivot, Frame End
20	3828 281	1	All	BRACKET, Pivot Stud, Frame End, Up To 3-1-1979
	4094 150	1	All	BRACKET PACKAGE, Torque Shaft Mtg., Consists Of: (Item No. 18, 19, 20, 21, 24) Up To 3-1-1979
	4116 425	1	All	w/o Stud, After 3-1-1979
	2461 766	1	All	STUD, Brkt. Pivot, Frame End, After 3-1-1979
21	6028 776	1	All	WASHER, Coned, 9/16
22	118 618	1	All	NUT, 9/16-12
23	181 108	1	All	BOLT, 3/8-16 x 3/4"
24	3735 425	1	All	PLATE, Bracket Reinf.
25	3491 626	1	All	ROD, Clutch Pedal - 1978-79-80
	4210 694	1	All	1981
26	2265 942	2	All	SEAL, Cl. Torque Shaft
27	3491 627	1	All	SHAFT w/LEVERS, Clutch Torque, Up To 3-1-1979
	4117 677	1	All	After 3-1-1979
	4205 989	1	All	1980
	4210 692	1	All	1981
28	9411 022	1	All	FITTING, Grease
29	9418 275	2	All	SCREW, 7/16-14 x 1-1/2"
30	3491 634	1		BRACKET w/STUD, w/10" Clutch, Eng. End - 1978-79-80
	4210 688	1		1981

LIGHT A = All Sport Utility (Ramcharger).

B = All Compact Models.

D = Conventional Cab.

DUTY AD = 2 Wheel Drive Only (Ramcharger).

CB-MB = Compact Front Section Only.

W = Conventional Cab 4 Wheel Drive.

CODES: AW = 4 Wheel Drive Only (Ramcharger).

P = Forward Control Chassis.

M = Motor Home.

MEDIUM-HEAVY CODES: XNT = Low Cab Forward. D = Conventional Cab. S = School Bus. W = 4-Wheel Drive.

AR=Use as Required

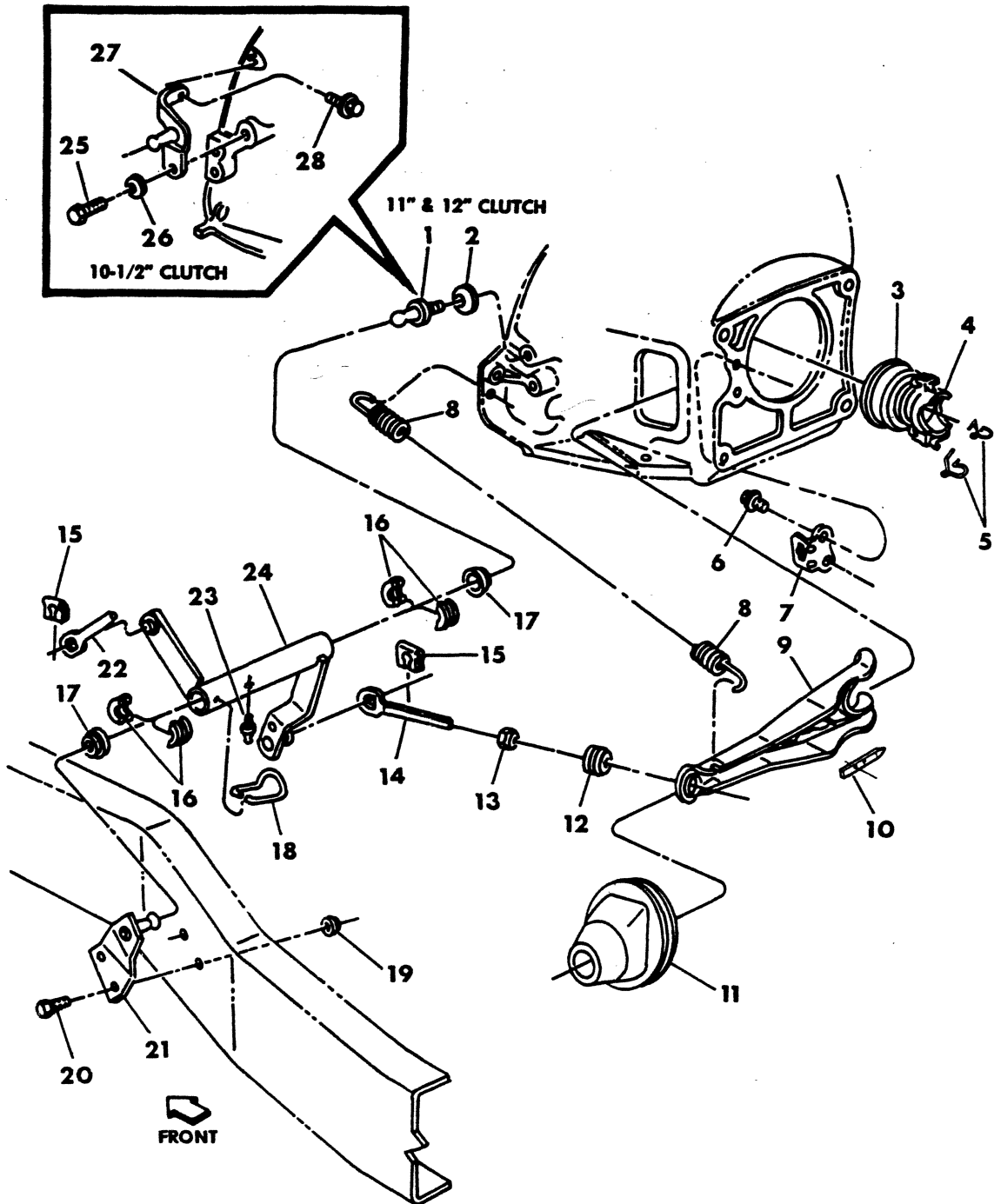
# = New Part Number

Printed in U.S.A.

June, 1982

8306 500

CLUTCH CONTROLS - D1,2,3,4-W1,2,3,4-AD1-AW1  
WITH 318,360,400,440 AND MMC DIESEL ENGINE



ITEM	PART NUMBER	QTY	MODEL	DESCRIPTION
<b>CLUTCH CONTROLS - D1,2,3,4-W1,2,3,4-AD1-AW1 WITH 318,360,400,440 AND MMC DIESEL ENGINE</b>				
1	2461 766	1		STUD, Pivot, w/11" and 12" Clutch
2	6028 776	1	All	WASHER, Pivot Stud, Coned 9/16
3	658 998	1	All	BEARING, Clutch Release
4	2405 077	1	All	BEARING w/SLEEVE, Cl. Release, Up To 3-1-1979
	4130 643	1	All	After 3-1-1979
5	2073 687	2	All	SPRING, Cl. Release Brg. Pull Back
6	181 086	2	All	SCREW, 5/16-18 x 3/4"
7	3743 930	1		PIVOT, Release Fork, w/10-1/2" Clutch - 1978
	4058 872	1		1979-80
	2961 312	1		w/11" and 12" Clutch - 1978-79-80
	4210 695	1		w/10" and 11" Clutch - 1981
8	2516 771	1	All	SPRING, Cl. Release Fork Return - 1978-79-80
	4202 859	1	All	1981
9	3743 998	1	All	FORK w/SPRING, Cl. Release - 1978-79-80
	4210 697	1	All	1981
10	2823 559	1	All	SPRING, Cl. Release Fork - 1978-79-80
	4202 858	1	All	1981
	6023 660	2	All	RIVET, Cl. Release Fork Spring
11	3515 300	1	All	SEAL, Cl. Release Fork
12	2401 740	1	All	SWIVEL, Cl. Release Fork Rod
13	6030 979	1	All	NUT, Fork Adjusting
14	3491 954	1	All	ROD, Cl. Release Fork Rod - 1978-79-80
	4210 699	1	All	1981
15	2405 085	2	All	WASHER, Fork Rod Spring
	120 395	2	All	WASHER, Torque Shaft Lever Pin, 7/16" Flat
16	2265 938	4	All	BEARING, Cl. Torque Shaft Pivot - 1978-79-80
	4210 690	4	All	1981
17	2265 942	2	All	SEAL, Cl. Torque Shaft
18	2401 910	1	All	SNAP RING, Pivot Bearing
19	6025 020	2	All	NUT, 3/8-16
20	181 112	2	All	BOLT, 3/8-16 x 1"
	181 116	2	All	3/8-16 x 1-1/2"
21	3893 789	1	All	BRACKET w/STUD, Frame End, Up To 3-1-1979
	4116 425	1	All	w/o Stud, After 3-1-1979
	2461 766	1	All	STUD, Brkt. Pivot, Frame End, After 3-1-1979
22	3491 626	1	All	ROD, Clutch Pedal - 1978-79-80
	4210 694	1	All	1981
23	9411 022	1	All	FITTING, Grease
24	3491 627	1	All	SHAFT w/LEVERS, Clutch Torque, Up To 3-1-1979
	4117 677	1	All	After 3-1-1979
	4205 989	1	All	1980
	4210 692	1	All	1981
25	181 182	1	All	SCREW, 9/16-12 x 1"
26	6024 691	1	All	WASHER, Coned
27	4036 816	1	D1	BRACKET w/STUD, 10-1/2" Clutch, Eng. End - 1978-79-80
	4210 689	1	D1	w/318 Eng., w/A833 Trans. - 1981
28		1		SCREW, (P/O Eng. Assy.)
	3735 425	1		PLATE, Brkt. Reinf., After 3-1-1979

<b>LIGHT DUTY CODES:</b>	A = All Sport Utility (Ramcharger).	B = All Compact Models.	D = Conventional Cab.
	AD = 2 Wheel Drive Only (Ramcharger).	CB-MB = Compact Front Section Only.	W = Conventional Cab 4 Wheel Drive.
	AW = 4 Wheel Drive Only (Ramcharger).	P = Forward Control Chassis.	M = Motor Home.

**MEDIUM-HEAVY CODES:** XNT = Low Cab Forward. D = Conventional Cab. S = School Bus. W = 4-Wheel Drive.

AR=Use as Required

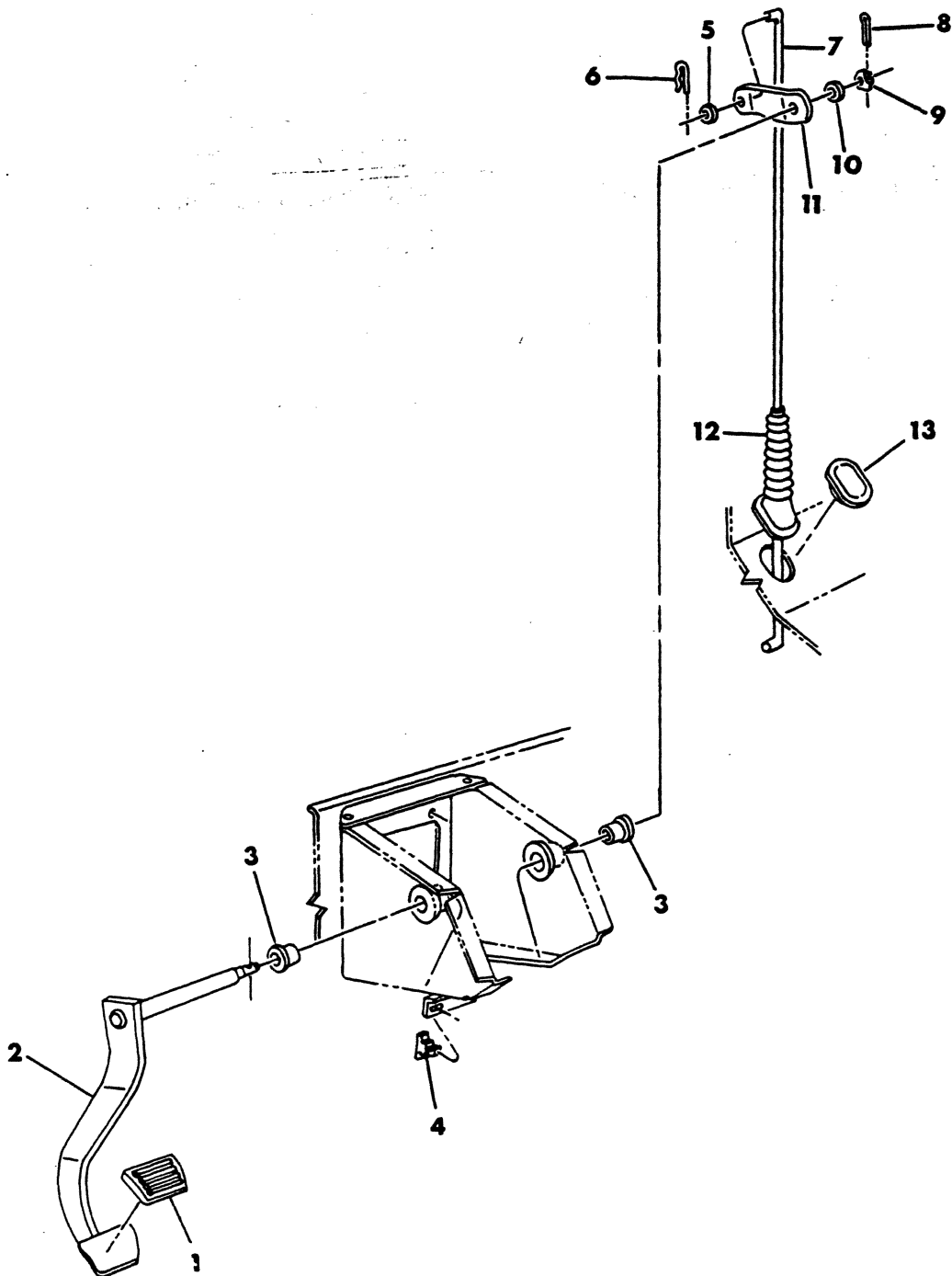
# = New Part Number

Printed in U.S.A.

June, 1982

8306 600

CLUTCH PEDAL - B1,2,3-CB3-MB2



ITEM	PART NUMBER	QTY	MODEL	DESCRIPTION
<b>CLUTCH PEDAL - B1,2,3-CB3-MB2</b>				
1	2955 312	1	All	PAD, Clutch Pedal - 1978
	4089 163	1	All	1979-80-81
2	2955 325	1	All	PEDAL, Clutch - 1978
	4036 411	1	All	1979-80-81
3	1799 558	2	All	BUSHING, Clutch Pedal Shaft
4	2266 820	1	All	BUMPER, Clutch Pedal
5	120 393	1	All	WASHER, Plain 5/16
6	6027 983	1	All	CLIP, Hair Pin
7	4032 404	1	All	ROD, Clutch Release, Upper - 1978
	4115 630	1	All	1979-80-81
8				PIN, Cotter (Not Serviced)
9	125 237	1	All	NUT, 3/8-24
10	120 394	1	All	WASHER, 3/8
11	2955 468	1	All	LEVER, Clutch Pedal - 1978
	4036 413	1	All	1979-80-81
12	2961 307	1	All	BOOT, Clutch Pedal Rod
13	3491 398	1	All	COVER, Rod Hole, u/w Automatic Trans.- 1978
	4118 613	1	All	1979-80-81

<b>LIGHT</b>	A = All Sport Utility (Ramcharger).	B = All Compact Models.	D = Conventional Cab.
<b>DUTY</b>	AD = 2 Wheel Drive Only (Ramcharger).	CB-MB = Compact Front Section Only.	W = Conventional Cab 4 Wheel Drive.
<b>CODES:</b>	AW = 4 Wheel Drive Only (Ramcharger).	P = Forward Control Chassis.	M = Motor Home.

**MEDIUM-HEAVY CODES:** XNT = Low Cab Forward. D = Conventional Cab. S = School Bus. W = 4-Wheel Drive.

AR=Use as Required

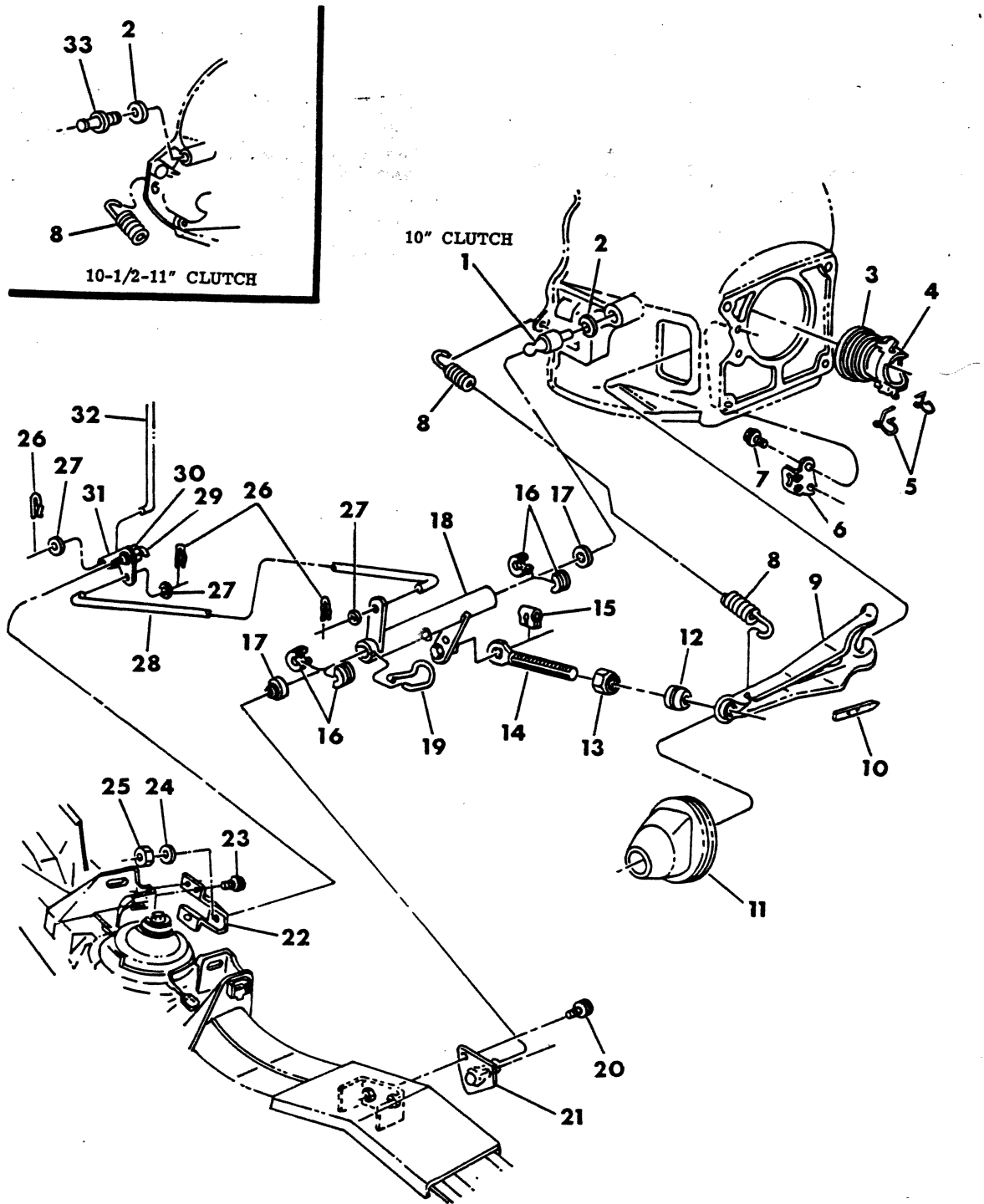
# =New Part Number

Printed in U.S.A.

June, 1982

CLUTCH CONTROLS - B1,2,3-CB3-MB2

8306 700



ITEM	PART NUMBER	QTY	MODEL	DESCRIPTION
<b>CLUTCH CONTROLS - B1,2,3-CB3-MB2</b>				
1	2830 857	1		STUD, w/10" Clutch, w/225 Eng., Eng End
2	6028 776	1	All	WASHER, Pivot Stud, Coned 9/16
3	658 998	1	All	BEARING, Clutch Release
4	2405 077	1	All	BEARING w/SLEEVE, Cl. Release, UP to 3-1-1979
	4130 643	1	All	AFTER 3-1-1979
5	2073 687	2	All	SPRING, Brg. Pull Back
6	3743 930	1		PIVOT, w/10" and 10-1/2" Clutch - 1978
	4058 872	1		1979-80
	2961 312	1		w/11" Clutch - 1978-79-80
	4210 695	1		w/10" and 11" Clutch - 1981
7	181 086	2	All	SCREW, Pivot 5/16-18 x 3/4"
8	2516 771	1	All	SPRING, Cl. Release Fork Return - 1978-79-80
	4202 859	1	All	1981
9	3743 998	1	All	FORK w/SPRING, Cl. Release - 1978-79-80
	4210 697	1	All	1981
10	2823 559	1	All	SPRING, Cl. Release Fork Pivot - 1978-79-80
	4202 858	1	All	1981
11	3515 300	1	All	BOOT, Cl. Release Fork
12	2401 740	1	All	SWIVEL, Cl. Release Fork Rod
13	6030 979	1	All	NUT, Cl. Release Fork Adjusting
14	3491 954	1	All	ROD, Cl. Release Fork - 1978-79-80
	4210 699	1	All	1981
15	2405 085	2	All	WASHER, Cl. Release Fork Rod Spring
16	2265 938	4	All	BEARING, Cl. Torque Shaft Pivot - 1978-79-80
	4210 690	4	All	1981
17	2265 942	2	All	SEAL, Cl. Torque Shaft
18	2955 478	1	All	SHAFT w/LEVERS, Cl. Release Torque - 1978-79-80
	4213 317	1	All	1981
19	2401 910	1	All	SNAP RING, Cl. Torque Shaft Pivot Brg.
20	181 112	2	All	SCREW, 3/8-16 x 1"
21	2960 042	1	All	BRACKET w/STUD, Cl. Torque Shaft Pivot, Frame End
22	4036 849	1	All	BRACKET, Cl. Release Idler Lever Mtg. - 1978
	4115 631	1	All	1979-80-81
23	6030 466	3	All	SCREW, Brkt., 5/16-18 x 1" - 1978
	181 112	2	All	3/8-16 x 1" - 1979-80-81
24	6028 762	1	All	WASHER, Idler Shaft
25	1825 449	1	All	NUT, Idler Shaft - 1978
	6029 335	1	All	NUT w/Wa., 1/2"-20 - 1979-80-81
26	6027 983	3	All	CLIP, Rod Retaining Hair Pin
27	120 393	3	All	WASHER, Plain 5/16
28	4032 403	1	All	ROD, Cl. Release, Lower
29	9411 017	1	All	FITTING, Grease
30	2955 472	1	All	SHAFT, Cl. Release Idler Lever
31	2955 473	1	All	LEVER, Cl. Release Idler - 1978
	4115 628	1	All	1979-80-81
32	4032 404	1	All	ROD, Cl. Release, Upper - 1978
	4115 630	1	All	1979-80-81
33	2461 766	1	All	STUD, Cl. Torque Shaft Pivot, w/10-1/2" and 11" Clutch, Eng. End

**LIGHT DUTY CODES:**  
 A = All Sport Utility (Ramcharger).  
 AD = 2 Wheel Drive Only (Ramcharger).  
 AW = 4 Wheel Drive Only (Ramcharger).

B = All Compact Models.  
 CB-MB = Compact Front Section Only.  
 P = Forward Control Chassis.

D = Conventional Cab.  
 W = Conventional Cab 4 Wheel Drive.  
 M = Motor Home.

**MEDIUM-HEAVY CODES:** XNT = Low Cab Forward. D = Conventional Cab. S = School Bus. W = 4-Wheel Drive.

AR=Use as Required

# = New Part Number

Printed in U.S.A.

June, 1982

