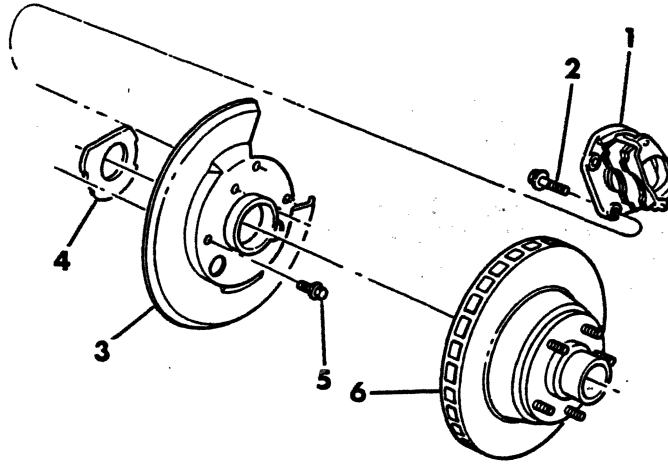


GROUP 5 - BRAKE, SERVICE

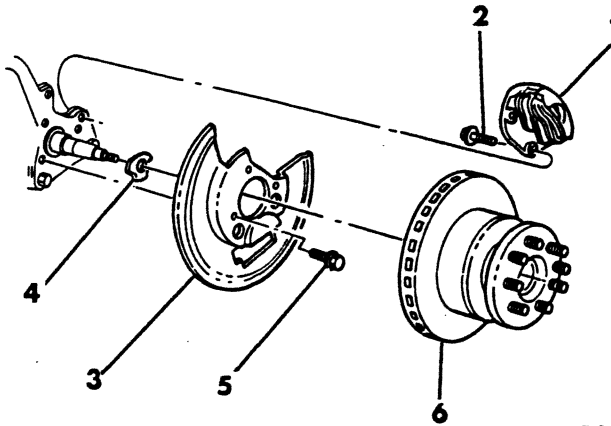
BOOSTER - MASTER CYLINDER AND MOUNTING A - D - W - RD2	Fig. 5-1800
BOOSTER - MASTER CYLINDER AND MOUNTING M 3-4-5-6	Fig. 5-1850
BOOSTER, HYDRO-BOOSTER, MASTER CYLINDER & MOUNTING B, CB, MB	Fig. 5-1825
BRAKE, REAR HYDRAULIC - 15 x 4 M500-600	Fig. 5-700
BRAKE, REAR, 13 X 3.5 CB-300 CB-MB400	Fig. 5-650
BRAKES, REAR, HYDRAULIC A - B - D - W 10 X 2.5 - 11 X 2.5 - 12.12 X 2	Fig. 5-500
BRAKES, REAR, HYDRAULIC 12 X 2.5" - 12 X 3" B - D - W - M	Fig. 5-600
CLIP CHART, BRAKE	Fig. 5-6000
CONTROLS, BRAKE M3-4-5-6	Fig. 5-800
DISC BRAKES, FRONT AD, D, B, CB, MB	Fig. 5-100
DISC BRAKES, FRONT AW, W, RD2	Fig. 5-200
DISC BRAKES, FRONT MOTOR HOME	Fig. 5-300
ELBOWS AND CONNECTORS, BRAKE	Fig. 5-5700
HYDRO BOOSTER COMPONENTS, B - D - M	Fig. 5-900
LINES AND HOSE, BRAKE, FRONT M3-4-5-6	Fig. 5-1600
LINES AND HOSES, BRAKE B-CB-MB	Fig. 5-1300
LINES AND HOSES, BRAKE AD1, AW1, D1-2-3-4, W1-2-3-4, RD2	Fig. 5-1400
LINES AND HOSES, BRAKE, REAR M3-4-5-6	Fig. 5-1700
NYLON TUBING CONNECTOR CHART	Fig. 5-5650
PEDAL, BRAKE B1-2-3, MB3-4, CB3-4	Fig. 5-1000
PEDAL, BRAKE AD-AW1, D1-2-3-4, W1-2-3-4, RD2	Fig. 5-1100
TEES, ELBOWS, BLOCKS AND CONNECTORS, BRAKE	Fig. 5-6200
VACUUM CONNECTORS AND HOSE, BOOSTER	Fig. 5-5600

8305 100A

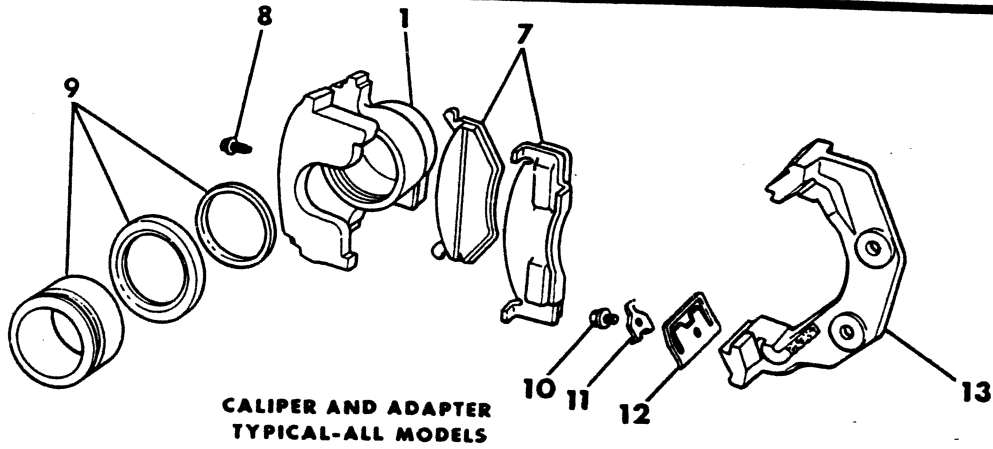
DISC BRAKES, FRONT
AD, D, B, CB, MB



AD-D-B100-200



D200-300-400
B-CB300, MB300-400



CALIPER AND ADAPTER
TYPICAL-ALL MODELS

ITEM	PART NUMBER	QTY	MODEL	DESCRIPTION
DISC BRAKES, FRONT				
AD, D, B, CB, MB				
1	4037 968-9	1	All	HOUSING, Caliper
	4213 136-7	1	All	1981
2	6030 784	4	All	SCREW, Housing Mounting, Except 4000 lb. Front Axle
	6029 925	4	All	w/4000 lb. Front Axle
3	3637 562-3	1	A-D1,B1-2	SHIELD, Splash
	3637 564-5	1	B3,CB-MB	
	3637 564-5	1	D2-3-4	
4	3497 930	2	All	SEAL, Splash Shield to Knuckle, w/3300 lb. Front Axle
5	181 084	6	All	SCREW, Splash Shield to Knuckle
6	4086 356	2	A-D1,B1-2	HUB and DISC ASSEMBLY
	3880 686	2	D1,B1-2	w/3300 lb. Frt.Axle Single Rears,1980-81
	4037 875	2	B3,CB-MB3	w/3300 lb. Front Axle, w/Single Rears, 1978
	4037 875	2	D2	w/3300 lb. Front Axle, w/Single Rears, 1978
	4037 876	2	MB3	w/3300 lb. Front Axle, w/Dual Rears, 1978
	4086 830	2	D2	w/3300 lb. Front Axle,8 Stud Rotor,1979-80-81
	4086 830	2	B3,CB-MB3	w/3600 lb. Front Axle, w/Single Rears, 1979-80-81
	4086 832	2	MB3	3600 lb. Front Axle, w/Dual Rears, 1979-80-81
	3637 626	2	B3,CB-MB3	w/4000 lb. Front Axle, w/Single Rears, 1978
	3637 626	2	D2-3	w/4000 lb. Front Axle, w/Single Rears, 1978
	3637 626	2	B3,D3,MB3	4000 lb. Frt.Axle,w/Single Rears, w/ 5/8" Studs,1979-80-81
	4116 932	2	B3,MB3,D3	w/4000 lb. Front Axle, w/Single Rears, w/ 1/2" Studs, 1979-80-81
	3820 186	2	CB,MB3-4	w/4000 lb. Front Axle, w/Dual Rears
	3820 186	2	D3-4	w/4000 lb. Front Axle, w/Dual Rears
7	4094 111	1	A-D1,B1-2	PAD W/LINING, Axle Set
	3683 963	1	B3,CB-MB	
	3683 963	1	D2-3-4	
8	3780 788	2	All	SCREW, Bleeder
9	4186 987	2	All	SEAL, BOOT AND PISTON PACKAGE
	4049 695	2	All	BOOT AND SEAL PACKAGE
10	6029 930	2	All	SCREW AND WASHER, Retainer
11	3580 823	2	All	SPRING, Retainer
12	3580 824	2	All	RETAINER AND PLATE
13	3699 992	2	All	ADAPTER, Except 4000 lb. Front Axle
	4117 532	2	All	w/4000 lb. Front Axle

LIGHT A = All Sport Utility (Ramcharger).

B = All Compact Models.

D = Conventional Cab.

DUTY AD = 2 Wheel Drive Only (Ramcharger).

CB-MB = Compact Front Section Only.

W = Conventional Cab 4 Wheel Drive.

CODES: AW = 4 Wheel Drive Only (Ramcharger).

P = Forward Control Chassis.

M = Motor Home.

MEDIUM-HEAVY CODES: XNT = Low Cab Forward. D = Conventional Cab. S = School Bus. W = 4-Wheel Drive.

AR=Use as Required

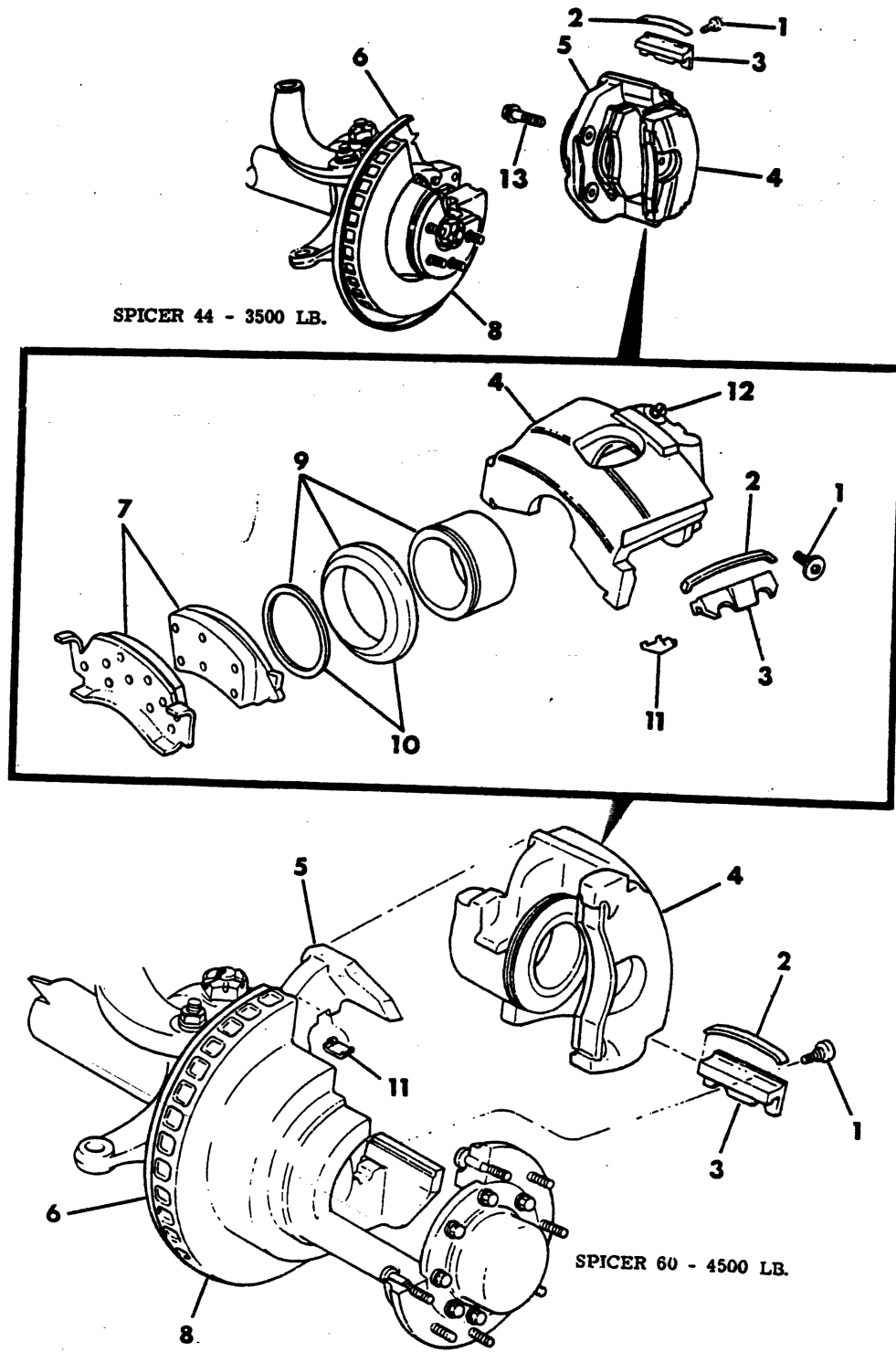
=New Part Number

Printed in U.S.A.

June, 1982

DISC BRAKES, FRONT
AW, W, RD2

8305 200A



ITEM	PART NUMBER	QTY	MODEL	DESCRIPTION
DISC BRAKES, FRONT AW, W, RD2				
1				SCREW AND WASHER, Retainer
	6029 930	2	AW,W1-2,RD2	w/3500 lb. Front Axle
	3893 684	2	W2-3-4	w/4500 lb. Front Axle
2	3580 823	2	AW,W1-2,RD2	SPRING, Retainer, w/3500 lb. Front Axle
	3893 685	2	W2-3-4	w/4500 lb. Front Axle
3	3580 824	2	AW,W1-2,RD2	RETAINER, w/3500 lb. Front Axle
	3893 683	2	W2-3-4	w/4500 lb. Front Axle
4	4037 968-9	1	AW,W1-2,RD2	HOUSING, Caliper, w/3500 lb. Front Axle
	4213 136-7	1	All	1981
	3898 144-5	1	W2-3-4	w/4500 lb. Front Axle
5	3736 757	2	AW,W1-2,RD2	ADAPTER, w/3500 lb. Front Axle
	4117 266	2	AW,W1-2,RD2	1980
	3821 530	1	W2-3-4	w/4500 lb. Front Axle RT.
	3821 531	1	W2-3-4	w/4500 lb. Front Axle LT.
6	3736 760	2	AW,W1-2,RD2	SHIELD, Splash, w/3500 lb. Front Axle
	3821 520-1	1	W2-3-4	w/4500 lb. Front Axle
	4210 526	1	W1-2-3	w/3500 lb. Front Axle 1981
	3898 450	6	AW,W1-2,RD2	BOLT, Shield to Hub, w/3500 lb. Front Axle
7	4094 111	1	AW,W1	PAD W/LINING, Axle Set, w/3500 lb. Front Axle
	3683 963	1	W2,RD2	w/3500 lb. Front Axle
	3893 687	1	W2-3-4	w/4500 lb. Front Axle
8	4089 274	2	AW,W1	HUB W/DISC, w/3500 lb. Front Axle
	4117 575	2	AW,W1	1980-81 (w/Locking Hubs)
	4089 275	2	W2	w/3500 lb. Front Axle
	4116 203	2	W2,RD2	1980-81
	3821 532	2	W2	w/4500 lb. Front Axle
	3821 533	2	W3	w/4500 lb. Front Axle, w/Single Rears
	3821 534	2	W3-4	w/4500 lb. Front Axle, w/Dual Rears
	4031 972	2	RD2	
9	4186 995	1	AW,W1-2,RD2	PISTON,BOOT & SEAL PKG.,w/3500 lb. Frt.Axle 1980
	4186 987	1	AW,W1-2,RD2	PISTON,BOOT & SEAL PKG.,w/3500 lb. Frt.Axle 1981
	4094 106	1	W2-3-4	w/4500 lb. Front Axle
10	4094 107	1	W2-3-4	SEAL AND BOOT PKG., w/4500 lb. Front Axle
11	3893 686	2	All	CLIP, Anti-Rattle
12	3780 788	2	AW,W1-2,RD2	SCREW, Bleeder, w/3500 lb. Front Axle
	1924 376	2	W2-3-4	w/4500 lb. Front Axle
13	6030 784	4	AW1,W1-2	BOLT, Adapter to Knuckle, w/3500 lb. Front Axle

LIGHT A = All Sport Utility (Ramcharger).

B = All Compact Models.

D = Conventional Cab.

DUTY AD = 2 Wheel Drive Only (Ramcharger).

CB-MB = Compact Front Section Only.

W = Conventional Cab 4 Wheel Drive.

CODES: AW = 4 Wheel Drive Only (Ramcharger).

P = Forward Control Chassis.

M = Motor Home.

MEDIUM-HEAVY CODES: XNT = Low Cab Forward. D = Conventional Cab. S = School Bus. W = 4-Wheel Drive.

AR=Use as Required

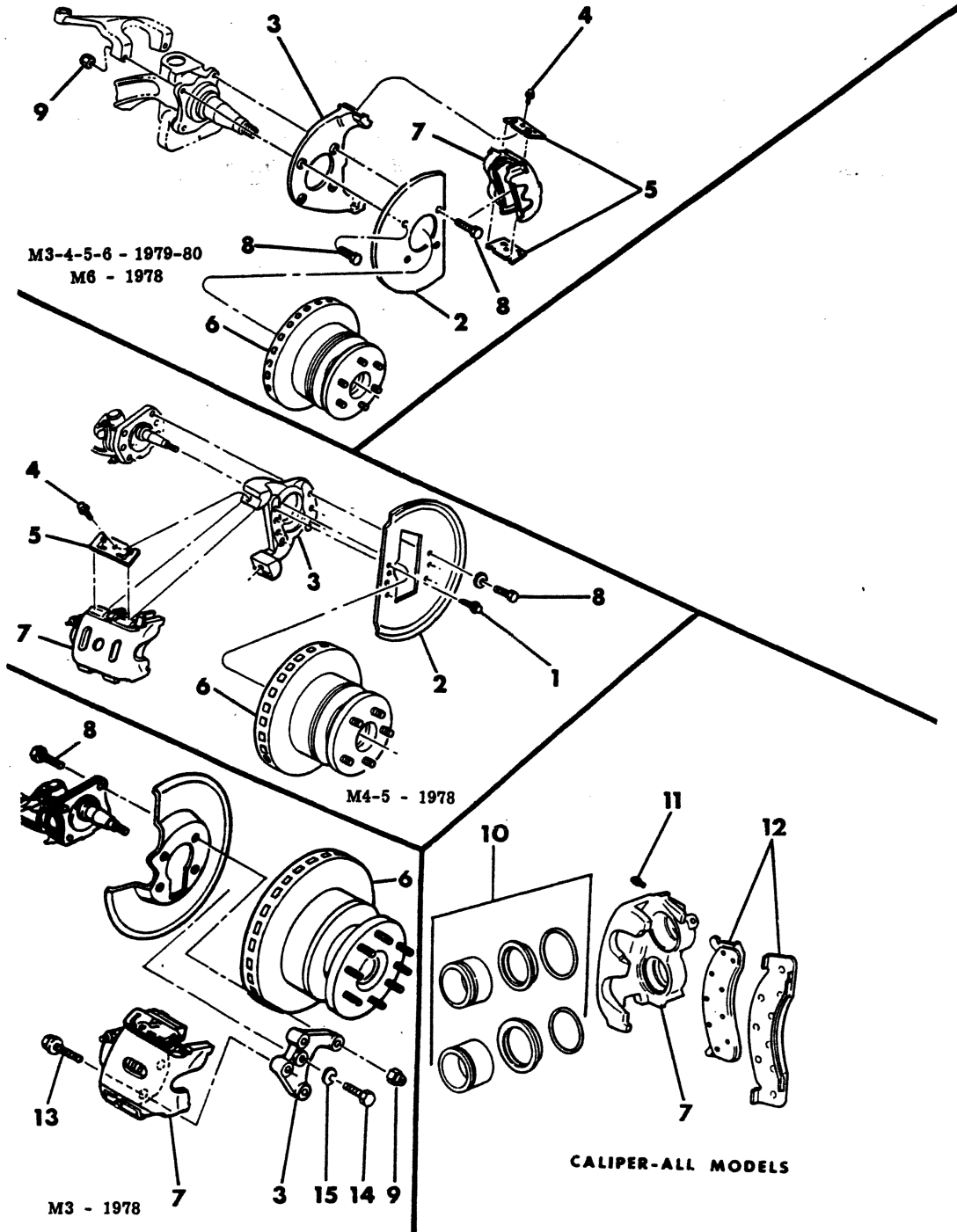
= New Part Number

Printed in U.S.A.

June, 1982

8305 300B

DISC BRAKES, FRONT MOTOR HOME



ITEM	PART NUMBER	QTY	MODEL	DESCRIPTION
DISC BRAKES, FRONT MOTOR HOME				
1	6023 092	12	M3-4	SCREW AND WASHER, Shield, 1978
2	3634 554-5	1	M3	SHIELD, Splash, 1978
	3638 576-7	1	M4	1978
	3638 578-9	1	M5	1978
	3733 418	2	M6	1978
3	3733 418	2	M3-4-5-6	1979
	4086 432	2	M3	ADAPTER, Disc Brake, 1978
	3638 554-5	1	M4	1978
	3638 556-7	1	M5	1978
	3733 428-9	1	M6	1978
	3733 372-3	1	M3-4	1979-80
	3733 428-9	1	M5-6	1979-80
4	3638 548-9	1	M3	Disc Brake to Steering Knuckle, 1978
	6029 930	4	M3	SCREW AND WASHER, Retainer, 1978
	4036 981	4	M4-5-6	1978
	4036 981	4	M3-4-5-6	1979-80
5	3580 824	4	M3	RETAINER AND PLATE, 1978
	4049 686	4	M4-5-6	1978
	4049 686	4	M3-4-5-6	1979-80
	3580 823	2	M3	Spring, Retainer
6	3820 188	2	M3	HUB W/DISC, 1978
	3638 561	2	M3	1979-80
	3638 561	2	M4	1978-79-80
	3638 564-5	1	M5	1978-79-80
	3898 976-7	1	M6	1978-79-80
7	4037 968-9	1	M3,4,5	HOUSING, Caliper, 1978
	4117 806-7	1	M3-4	1979-80
	4032 969	1	M6	Right, 1978
	4032 969	1	M5-6	Right, 1979-80
	4032 968	1	M6	Left, 1978
	4032 968	1	M5-6	Left, 1979-80
8	4213 136-7	1	M	1981
	9424 033	AR	M3	BOLT, Adapter to Knuckle, 1978
	6031 382	AR	M4-5	w/Washer, 1978
	6030 154	2	M6	Short, 5/8-18x3.00, 1978
	6030 154	2	M3-4-5-6	1979-80
	6030 322	6	M6	Long, 5/8-18x4.00, 1978
9	6030 322	6	M3-4-5-6	1979-80
	152 349	4	M3	NUT, Adapter to Knuckle Bolt, 1978
	152 353	8	M6	1978
10	152 353	8	M3-4-5-6	1979-80
	4026 122	1	M3	SEAL, BOOT AND PISTON PACKAGE, 1978 & 80
	3744 499	1	M4-5-6	1978
	3744 499	1	M3-4-5-6	1979
	4049 695	1	M3	BOOT AND SEAL PACKAGE, 1978
11	4094 108	1	M4-5-6	1978
	4094 108	1	M3-4-5-6	1979
	3780 788	2	M3-4-5-6	SCREW, Bleeder
12	3683 963	1	M3	PAD W/LINING, Axle Set, 1978

LIGHT	A = All Sport Utility (Ramcharger).	B = All Compact Models.	D = Conventional Cab.
DUTY	AD = 2 Wheel Drive Only (Ramcharger).	CB-MB = Compact Front Section Only.	W = Conventional Cab 4 Wheel Drive.
CODES:	AW = 4 Wheel Drive Only (Ramcharger).	P = Forward Control Chassis.	M = Motor Home.

MEDIUM-HEAVY CODES: XNT = Low Cab Forward. D = Conventional Cab. S = School Bus. W = 4-Wheel Drive.

AR=Use as Required

= New Part Number

Printed in U.S.A.

June, 1982

1978-81 LIGHT DUTY TRUCK PARTS CATALOG

BRAKE, SERVICE

ITEM	PART NUMBER	QTY	MODEL	DESCRIPTION
DISC BRAKES, FRONT MOTOR HOME				
	3744 500	1	M4-5-6	1978
	3744 500	1	M3-4-5-6	1979-80
13	6029 925	4	M3	SCREW, 5/8-18x2.5, 1978
14	182 796	2	M3	BOLT, 9/16-18x1.12, 1978
15		2	M3	WASHER (Not Serviced), 1978

LIGHT DUTY CODES: A = All Sport Utility (Ramcharger). B = All Compact Models. D = Conventional Cab.
 AD = 2 Wheel Drive Only (Ramcharger). CB-MB = Compact Front Section Only. W = Conventional Cab 4 Wheel Drive.
 CODES: AW = 4 Wheel Drive Only (Ramcharger). P = Forward Control Chassis. M = Motor Home.

MEDIUM-HEAVY CODES: XNT = Low Cab Forward. D = Conventional Cab. S = School Bus. W = 4-Wheel Drive.

AR=Use as Required

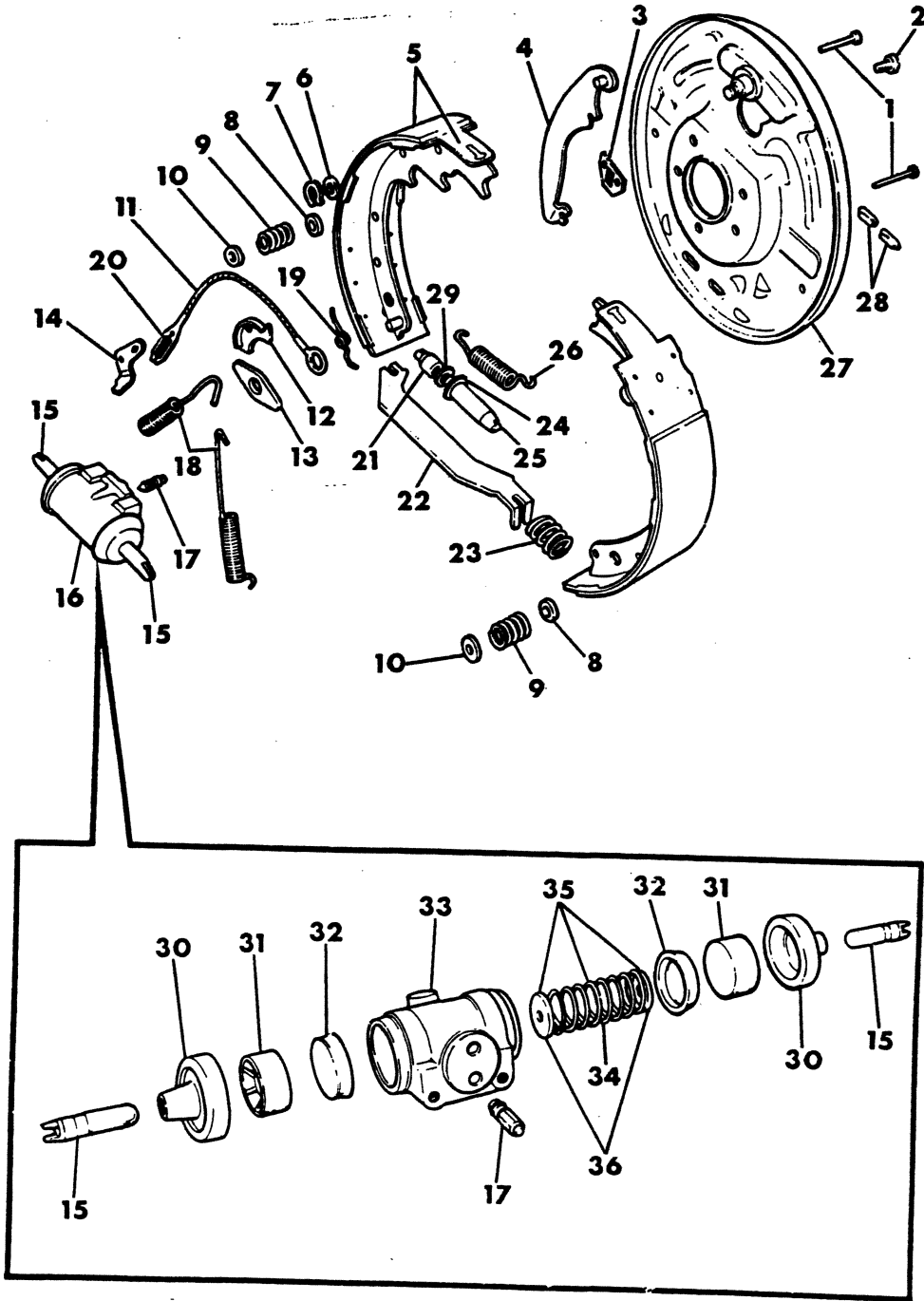
=New Part Number

Printed in U.S.A.

June, 1982

8305 500A

BRAKES, REAR, HYDRAULIC
A - B - D - W
10 X 2.5 - 11 X 2.5 - 12.12 X 2



ITEM	PART NUMBER	QTY	MODEL	DESCRIPTION
BRAKES, REAR, HYDRAULIC				
A - B - D - W				
10 X 2.5 - 11 X 2.5 - 12.12 X 2				
1				PIN, Shoe Hold Down
	2260 548	4	All	w/10x2.5 and 11x2.5 Brakes
	1664 539	4	All	w/12.12x2 Brakes
2				SCREW, Wheel Cylinder Mounting
	6028 921	4	All	w/10x2.5 and 11x2.5 Brakes
	181 082	4	All	w/12.12x2 Brakes
3				SEAL, Wheel Cylinder to Support
	2534 663	2	All	w/10x2.5 and 11x2.5 Brakes
4		2	All	LEVER, Parking Brake (Refer to Group 4)
5				SHOE W/LINING, Axle Set
	4049 682	1	All	w/10x2.5 Brakes
	4026 647	1	All	w/11x2.5 Brakes
	4088 890	1	All	w/12.12x2 Brakes
6		2	All	WASHER (Refer to Group 4)
7		2	All	LOCK (Refer to Group 4)
8				SEAT, Shoe Hold Down Spring
	2260 792	4	All	w/10x2.5 and 11x2.5 Brakes
9	2260 791	4	All	SPRING, Shoe Hold Down
10	2260 792	8	All	RETAINER, Shoe Hold Down Spring
11				CABLE, Automatic Adjusting
	3461 663	2	All	w/10x2.5 Brakes
	3461 664	2	All	w/11x2.5 Brakes
	4088 888	2	All	w/12.12x2 Brakes
12	2260 793	2	All	GUIDE, Automatic Adjusting Cable
13				PLATE, Shoe Guide
	2267 045	2	All	w/10x2.5 Brakes
	2260 788	2	All	w/11x2.5 Brakes
	1664 580	2	All	w/12.12x2 Brakes
14				LEVER, Automatic Adjusting
	3461 665	2	All	w/10x2.5 and 11x2.5 Brakes
	2238 524-5	1	All	w/12.12x2 Brakes
				PIN, Automatic Adjusting Lever (Not Shown)
	4049 681	2	All	w/10x2.5 and 11x2.5 Brakes
15	2260 787	4	All	ROD, Shoe Push
16				REPAIR PACKAGE, Wheel Cylinder
	3780 524	1		w/10x2.5 and 11x2.5 Brakes
17				SCREW, Cylinder Bleeder
	3766 674	2	All	w/10x2.5 and 11x2.5 Brakes
	1924 376	2	All	w/12.12x2 Brakes
18				SPRING, Shoe Return
	2260 835	4	All	w/10x2.5 Brakes
	2260 789	4	All	w/11x2.5 Brakes
	1664 538	4	All	w/12.12x2 Brakes
19				SPRING, Adjusting Lever
	2944 580-1	1	All	w/10x2.5 and 11x2.5 Brakes
20				SPRING, Adjusting Cable
	3461 660	2	All	w/10x2.5 and 11x2.5 Brakes
21				SOCKET, Adjusting Screw
	2944 586	2	All	w/10x2.5 and 11x2.5 Brakes

LIGHT A = All Sport Utility (Ramcharger).

B = All Compact Models.

D = Conventional Cab.

DUTY AD = 2 Wheel Drive Only (Ramcharger).

CB-MB = Compact Front Section Only.

W = Conventional Cab 4 Wheel Drive.

CODES: AW = 4 Wheel Drive Only (Ramcharger).

P = Forward Control Chassis.

M = Motor Home.

MEDIUM-HEAVY CODES: XNT = Low Cab Forward. D = Conventional Cab. S = School Bus. W = 4-Wheel Drive.

AR = Use as Required

= New Part Number

Printed in U.S.A.

June, 1982

1978-81 LIGHT DUTY TRUCK PARTS CATALOG

BRAKE, SERVICE

ITEM	PART NUMBER	QTY	MODEL	DESCRIPTION
BRAKES, REAR, HYDRAULIC				
A - B - D - W				
10 X 2.5 - 11 X 2.5 - 12.12 X 2				
	2265 068	2	All	w/12.12x2 Brakes
22		2	All	STRUT (Refer to Group 4)
23		2	All	SPRING (Refer to Group 4)
24				SCREW, Adjusting
	2881 686-7	1	All	w/10x2.5 and 11x2.5 Brakes
	2237 580-1	1	All	w/12.12x2 Brakes
25				NUT, Adjusting Screw Pivot
	2944 692-3	1	All	w/10x2.5 and 11x2.5 Brakes
	2953 976-7	1	All	w/12.12x2 Brakes
26				SPRING, Automatic Adjusting
	3766 574	2	All	w/10x2.5 Brakes
	2880 555	2	All	w/11x2.5 Brakes
	2237 594	2	All	w/12.12x2 Brakes
27				SUPPORT, Brake
	3699 601	2	All	w/10x2.5 Brakes
	3699 603	2	All	w/11x2.5 Brakes
	2955 664-5	1	All	w/12.12x2 Brakes
28				COVER, Adjusting Hole
	2072 614	4	All	w/10x2.5 and 11x2.5 Brakes
	3492 669	4	All	w/12.12x2 Brakes
29				WASHER, Adjusting Screw Socket
	6027 559	2	All	w/10x2.5 and 11x2.5 Brakes
	2266 271	2	All	w/12.12x2 Brakes
30				BOOT, Wheel Cylinder
	2881 618	4	All	w/10x2.5 and 11x2.5 Brakes
	2260 846	4	All	w/12.12x2 Brakes
31				PISTON, Wheel Cylinder
	2534 922	4	All	w/12.12x2 Brakes
	2260 843	4	All	w/10x2.5 and 11x2.5 Brakes
32				CUP, Wheel Cylinder
		4		w/10x2.5 Brakes (Serviced in Ref. #16)
	2534 923	4	All	w/11x2.5 Brakes
	4088 896	4	All	w/12.12x2 Brakes
33				CYLINDER, Wheel
	3780 525	2	All	w/10x2.5 and 11x2.5 Brakes
	4088 892-3	1	All	w/12.12x2 Brakes
34				SPRING, Cylinder Piston
		2		w/10x2.5 and 11x2.5 Brakes (Serviced in Ref. #16)
35				SPRING AND EXPANDER ASSY.
	4088 891	2	All	w/12.12x2 Brakes
36				EXPANDER, Piston
		4	All	w/10x2.5 Brakes (Serviced in Ref. #16)
	4088 895	4	All	w/12.12x2 Brakes

LIGHT DUTY CODES: A = All Sport Utility (Ramcharger). B = All Compact Models. D = Conventional Cab.
 AD = 2 Wheel Drive Only (Ramcharger). CB-MB = Compact Front Section Only. W = Conventional Cab 4 Wheel Drive.
 AW = 4 Wheel Drive Only (Ramcharger). P = Forward Control Chassis. M = Motor Home.

MEDIUM-HEAVY CODES: XNT = Low Cab Forward. D = Conventional Cab. S = School Bus. W = 4-Wheel Drive.

AR=Use as Required

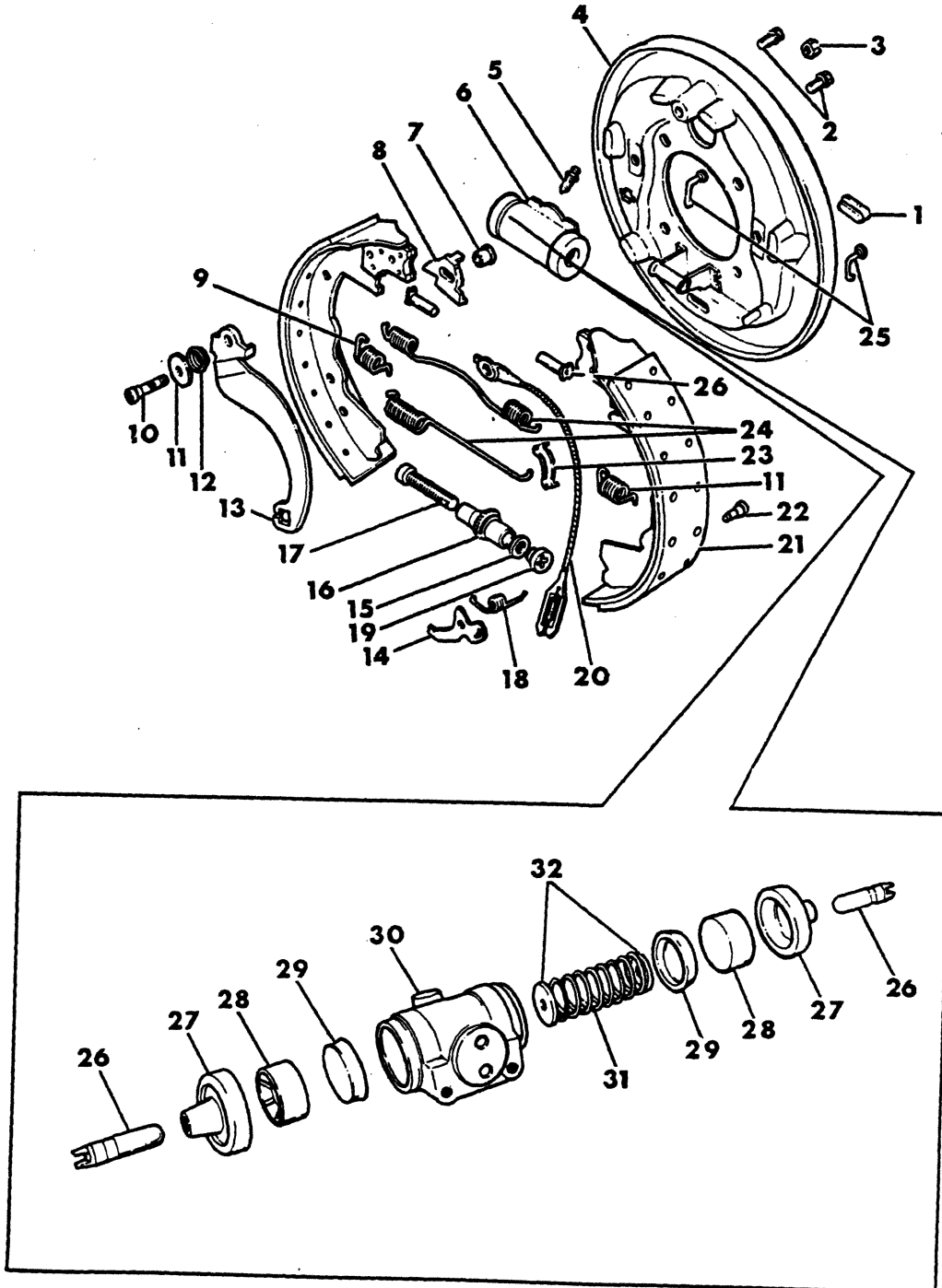
= New Part Number

Printed in U.S.A.

June, 1982

8305 600

BRAKES, REAR, HYDRAULIC
12 X 2.5" - 12 X 3"
B - D - W - M



ITEM	PART NUMBER	QTY	MODEL	DESCRIPTION
BRAKES, REAR, HYDRAULIC				
12 X 2.5" - 12 X 3"				
B - D - W - M				
1	3492 669	4	All	COVER, Adjusting Hole
2	181 082	4	All	SCREW, Cylinder Mounting
3		2	All	NUT (Refer to Group 4)
4	3492 632-3	1	All	SUPPORT, Brake
	3496 180	8	All	BOLT, Support to Axle, w/12x2.5 Brakes
	1664 518	8	All	w/12x3 Brakes
	9422 661	8	All	NUT, Support Bolt, w/12x2.5 Brakes
	152 349	8	All	w/12x3 Brakes
5	1924 376	2	All	SCREW, Bleeder
6		2		CYLINDER, Wheel (Refer to Item #30)
7		2	All	BUSHING (Refer to Group 4)
8		2	All	PLATE (Refer to Group 4)
9	3492 663	4	All	SPRING, Shoe Hold Down
10		2	All	BOLT (Refer to Group 4)
11		2	All	WASHER (Refer to Group 4)
12		2	All	SPRING (Refer to Group 4)
13		2	All	LEVER (Refer to Group 4)
14	3492 672	2	All	LEVER, Automatic Adjusting
15	3492 652	2	All	WASHER, Adjusting Screw Socket
16	3492 644-5	1	All	NUT, Adjusting Screw Pivot
17	3492 646-7	1	All	SCREW, Adjusting
18	3492 666-7	1	All	SPRING, Adjusting Lever
19	3492 643	2	All	SOCKET, Adjusting Screw
20	3492 651	2	All	CABLE, Adjusting
21	4088 904	1	All	SHOE W/LINING, Axle Set, w/12x2.5 Brakes
	4088 907	1	All	w/12x3 Brakes
22	3492 671	2	All	PIN, Adjusting Lever
23	3492 664	2	All	GUIDE, Adjusting Cable
24	3496 235	2	All	SPRING, Shoe Return, Upper
	3492 668	2	All	Lower
25	3492 662	4	All	PIN, Shoe Hold Down Spring
26	3827 775	4	All	ROD, Shoe Push
27	2260 846	4	All	BOOT, Cylinder
28	2534 922	4	All	PISTON, Cylinder, w/ 7/8" Cylinder
	4088 902	4	All	w/ 1" Cylinder
	4088 914	4	All	w/ 1 1/16" Cylinder
29	4088 896	4	All	CUP, Cylinder, w/ 7/8" Cylinder
	4088 903	4	All	w/ 1" Cylinder
	4088 915	4	All	w/ 1 1/16" Cylinder
30	4088 892-3	1	All	CYLINDER, Wheel, 7/8" Diameter
	4088 898-9	1	All	1" Diameter
	4219 048-9	1	All	1981
	4088 910-1	1	All	1 1/16" Diameter
31			All	SPRING, Cylinder
		2	All	w/ 7/8" and 1" Cylinder Refer to Ref. #32
	4086 516	2	All	w/ 1 1/16" Cylinder
32	4088 891	2	All	SPRING AND EXPANDER PKG., w/ 7/8" Cylinder
	4088 897	2	All	w/ 1" Cylinder
	4088 909	2	All	w/ 1 1/16" Cylinder

LIGHT A = All Sport Utility (Ramcharger).

B = All Compact Models.

D = Conventional Cab.

DUTY AD = 2 Wheel Drive Only (Ramcharger).

CB-MB = Compact Front Section Only.

W = Conventional Cab 4 Wheel Drive.

CODES: AW = 4 Wheel Drive Only (Ramcharger).

P = Forward Control Chassis.

M = Motor Home.

MEDIUM-HEAVY CODES: XNT = Low Cab Forward. D = Conventional Cab. S = School Bus. W = 4-Wheel Drive.

AR=Use as Required

= New Part Number

Printed in U.S.A.

June, 1982

1978-81 LIGHT DUTY TRUCK PARTS CATALOG

ITEM	PART NUMBER	QTY	MODEL	DESCRIPTION
------	-------------	-----	-------	-------------

**BRAKES, REAR, HYDRAULIC
12 X 2.5" - 12 X 3"
B - D - W - M**

NOTE:--7/8" Wheel Cylinder is used with 12x2.5 Brakes Only. 1" Wheel Cylinder is used with both 12x2.5 and 12x3 Brakes. 1 1/16" Wheel Cylinder is used with 12x3 Brakes Only.

LIGHT A = All Sport Utility (Ramcharger). B = All Compact Models. D = Conventional Cab.
DUTY AD = 2 Wheel Drive Only (Ramcharger). CB-MB = Compact Front Section Only. W = Conventional Cab 4 Wheel Drive.
CODES: AW = 4 Wheel Drive Only (Ramcharger). P = Forward Control Chassis. M = Motor Home.

MEDIUM-HEAVY CODES: XNT = Low Cab Forward. D = Conventional Cab. S = School Bus. W = 4-Wheel Drive.

AR=Use as Required

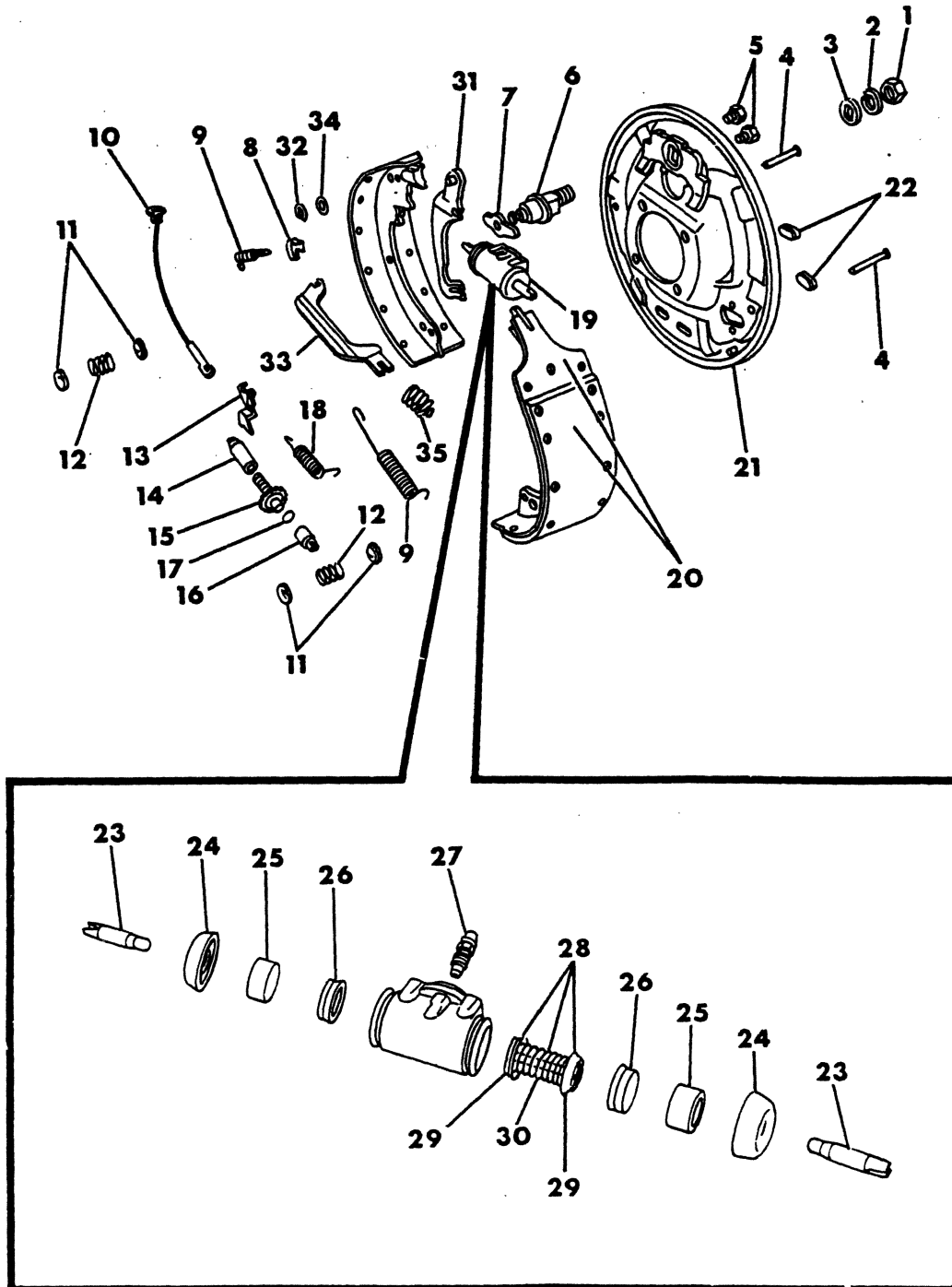
=New Part Number

Printed in U.S.A.

June, 1982

8305 650

BRAKE, REAR, 13 X 3.5
CB-300 CB-MB400



ITEM	PART NUMBER	QTY	MODEL	DESCRIPTION
BRAKE, REAR, 13 X 3.5 CB-300 CB-MB400				
1	427 363	2		NUT, Shoe Anchor Pin
2	1664 574	2		LOCKWASHER, Shoe Anchor Pin
3	1664 573	2		WASHER, Shoe Anchor Pin
4	4086 510	4		PIN, Shoe Hold Down Spring
5	181 082	4		SCREW, Cylinder Mounting
6	2960 550	2		PIN, Shoe Anchor
7	1664 580	2		PLATE, Shoe Guide
8	2260 793	2		GUIDE, Automatic Adjusting Cable
9	1664 562	4		SPRING, Shoe Anchor
10	2953 875	2		CABLE, Automatic Adjusting
11	2260 792	8		CUP, Shoe Hold Down Spring
12	2260 791	4		SPRING, Shoe Hold Down
13	2908 658-9	1		LEVER, Automatic Adjusting
14	2953 868-9	1		PIVOT, Shoe Adjusting Screw
15	2953 866-7	1		SCREW, Shoe Adjusting
16	2953 881	2		SOCKET, Shoe Adjusting Screw
17	2953 877	2		WASHER, Shoe Adjusting Screw
18	4086 512	2		SPRING, Automatic Adjusting Lever
19	4086 502-3	1		CYLINDER, Wheel, 1 1/8" Dia.
20	4086 513	2		SHOE AND LINING PACKAGE
	4086 514	1		LINING PACKAGE, Standard
21	4086 504-5	1		SUPPORT, Brake
22	2072 614	4		COVER, Adjusting Screw Hole
23	3633 898	4		LINK, Cylinder Connecting
24	2953 999	4		BOOT, Wheel Cylinder
25	2953 998	4		PISTON, Wheel Cylinder
26	4086 519	4		CUP, Wheel Cylinder
27	1924 376	2		SCREW, Cylinder Bleeder
28	4086 516	2		SPRING AND EXPANDER ASSY., Cylinder
29		4		CUP, Expander (Serv. in Ref. #28)
30	4086 517	2		SPRING, Cylinder Cup
31		1		LEVER (Refer to Group 4)
32		2		RETAINER (Refer to Group 4)
33		1		STRUT (Refer to Group 4)
34		2		WASHER (Refer to Group 4)
35		2		SPRING (Refer to Group 4)

LIGHT	A = All Sport Utility (Ramcharger).	B = All Compact Models.	D = Conventional Cab.
DUTY	AD = 2 Wheel Drive Only (Ramcharger).	CB-MB = Compact Front Section Only.	W = Conventional Cab 4 Wheel Drive.
CODES:	AW = 4 Wheel Drive Only (Ramcharger).	P = Forward Control Chassis.	M = Motor Home.

MEDIUM-HEAVY CODES: XNT = Low Cab Forward. D = Conventional Cab. S = School Bus. W = 4-Wheel Drive.

AR=Use as Required

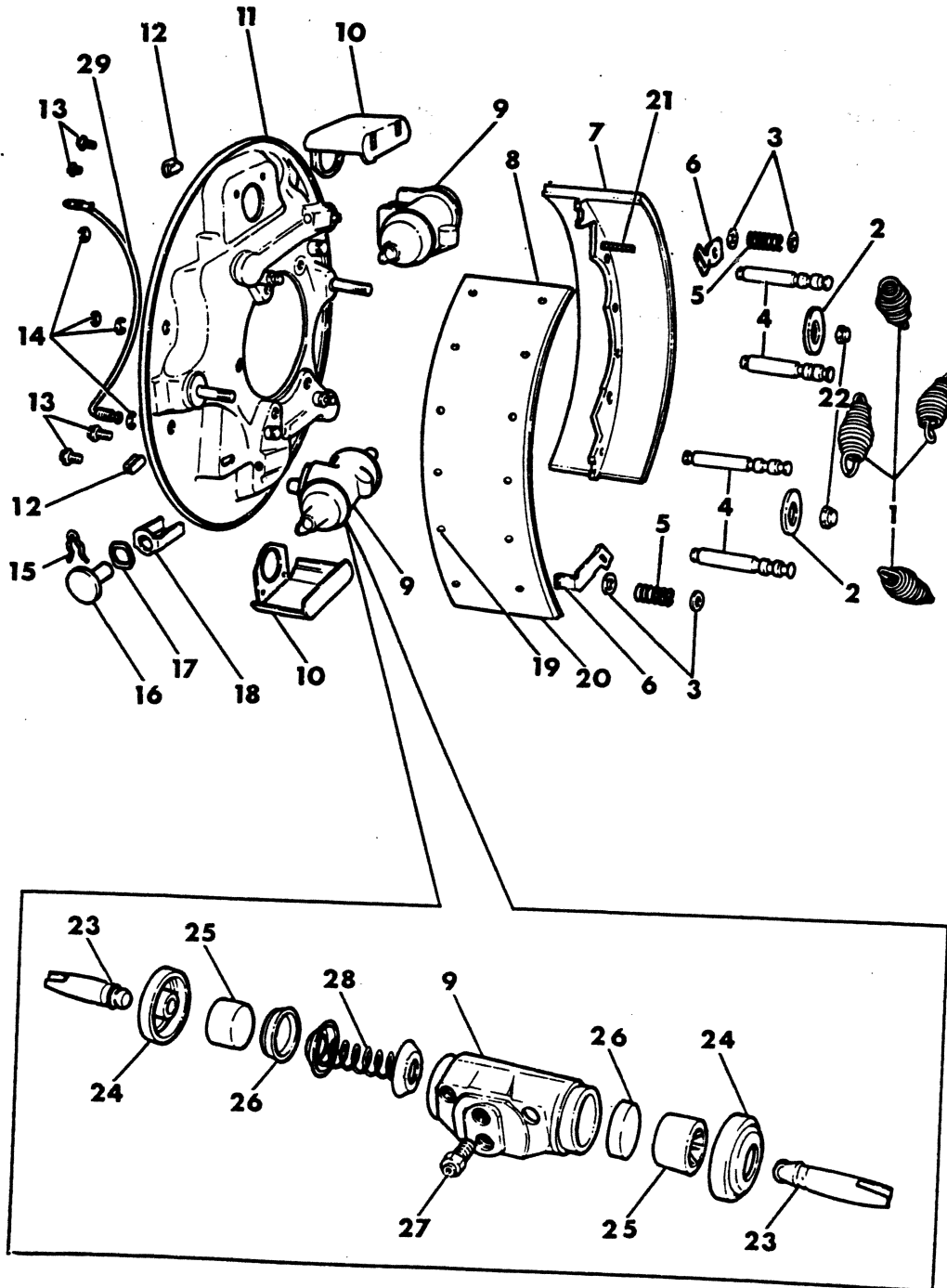
=New Part Number

Printed in U.S.A.

June, 1982

8305 700

BRAKE, REAR HYDRAULIC - 15 x 4
M500-600



ITEM	PART NUMBER	QTY	MODEL	DESCRIPTION
BRAKE, REAR HYDRAULIC - 15 x 4 M500-600				
1	2825 508	8		SPRING, Shoe Return
2	1788 386	4		WASHER, Shoe Hold Down Stud
3	2910 103	8		SEAT, Automatic Adjusting Lever Spring
4	2825 516	8		PIN, Shoe Return Spring
5	2909 518	4		SPRING, Automatic Adjusting Retaining
6	2909 516	2		LEVER, Automatic Adjusting, Right
	2909 517	2		Left
7	4026 636	1		SHOE W/Lining, Axle Set
8	2910 139	4		SHOE, w/o Lining
9				CYLINDER PACKAGE, Wheel
	3641 892	2		Upper, 1-3/8" Dia.
	3641 893	2		Lower, 1-3/8" Dia.
	2954 347	2		Upper, 1-1/2" Dia.
	2954 348	2		Lower, 1-1/2" Dia.
10	1788 383	4		COVER, Wheel Cylinder
11	2910 136-7	1		SUPPORT, Brake
	1797 021	8		BOLT, Support to Axle, Long
	6030 332	8		Short
	120 371	8	M5	NUT, Support Bolt
	6023 019	8	M6	
12	2072 614	4		COVER, Adjusting Hole
13	2825 505	8		SCREW, Cylinder Mounting
14	2829 293	8		RING, Pin Retaining
15	2909 514	4		SPRING, Adjusting Screw Hold Down
16	2909 512-3	2		SCREW, Adjusting
17	2955 819	4		WASHER, Adjusting Screw
18	2909 511	4		CLIP, Adjusting Screw Spring
19	1798 877	56		RIVET, Lining
20	2808 451	1		LINING PACKAGE
21	2909 515	4		PIN, Adjusting Lever
22	2825 506	4		LOCK NUT, Hold Down Stud
23	2952 421	8		ROD, Shoe Push
24	2825 513	8		BOOT, Cylinder
25	2910 430	8		PISTON, Cylinder, w/1-3/8" Dia. Cyl.
	2825 509	8		w/1-1/2" Dia. Cyl.
26	2910 431	8		CUP, Cylinder, w/1-3/8" Dia. Cyl.
	2232 007	8		w/1-1/2" Dia. Cyl.
27	1797 265	4		SCREW, Bleeder
28	2910 411	4		SPRING, Cylinder
29	3822 780	2		TUBE, Wheel Cylinder

LIGHT A = All Sport Utility (Ramcharger).

B = All Compact Models.

D = Conventional Cab.

DUTY AD = 2 Wheel Drive Only (Ramcharger).

CB-MB = Compact Front Section Only.

W = Conventional Cab 4 Wheel Drive.

CODES: AW = 4 Wheel Drive Only (Ramcharger).

P = Forward Control Chassis.

M = Motor Home.

MEDIUM-HEAVY CODES: XNT = Low Cab Forward. D = Conventional Cab. S = School Bus. W = 4-Wheel Drive.

AR=Use as Required

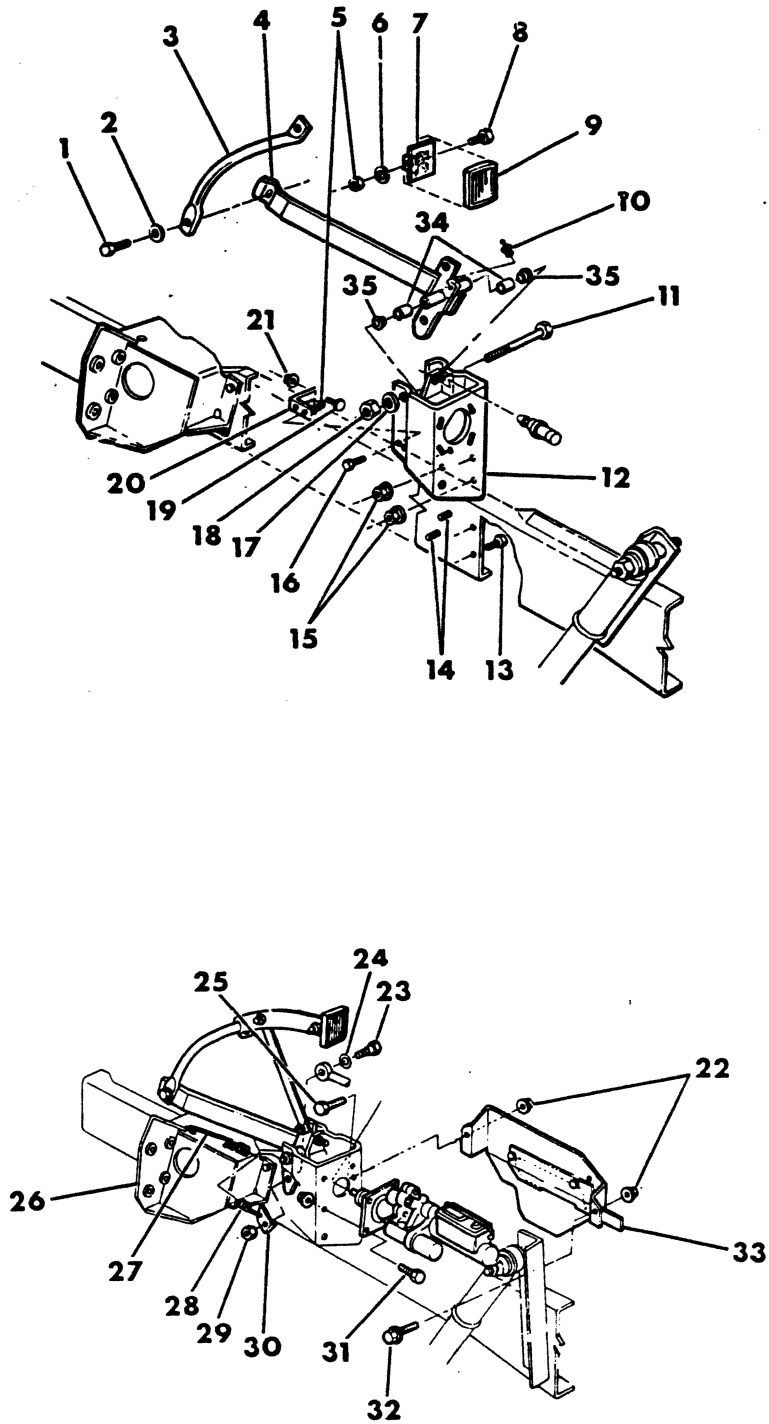
= New Part Number

Printed in U.S.A.

June, 1982

8305 800A

CONTROLS, BRAKE M3-4-5-6



ITEM	PART NUMBER	QTY	MODEL	DESCRIPTION
CONTROLS, BRAKE				
M3-4-5-6				
1	6030 505	1	All	SCREW
2	6025 705	1	All	WASHER
3	3633 212	1	M3-4-5	PEDAL, Upper Half
	4030 347	1	M6	
4	3633 685	1	M3	PEDAL, Lower Half, 1978
	3641 055	1	M4-5	1978
	4112 293	1	M3-4-5	1979
	4167 544	1	M3-4-5	1980
	4030 350	1	M6	1978
	4112 294	1	M6	1979
	4167 545	1	M6	1980
	3633 742	1	M3,4,5,6	EXTENSION, Brake Pedal
5	120 376	2	All	NUT
6	138 485	1	All	WASHER
7		1	All	PLATE (Serviced in Ref. 9)
8	6029 832	1	All	BOLT, Pedal Pad
9	2910 966	1	All	PAD AND PLATE, Pedal
10	9411 022	1	All	FITTING, Grease
11	3497 657	1	All	BOLT OR SHAFT, Brake Pedal Pivot, 1978
	4112 300	1	All	1979-80
12	3633 686	1	All	BRACKET, Brake Pedal, 1978
	4112 299	1	All	1979, up to 2-15-79
	4117 220	1	All	after 2-15-79
13	6029 723	1	All	BOLT
14	6029 726	2	All	BOLT
15	6029 335	4	All	NUT
16	180 079	1	All	BOLT
17	6024 691	1	All	WASHER
18	121 358	1	All	NUT
19	1936 846	1	M3	STOP, Pedal, 1978
	3827 107	1	M4-5-6	1978
	3827 107	1	All	1979-80
20	3633 451	1	M3	BRACKET, Stop, 1978
	3827 108	1	M4-5-6	1978
	3827 108	1	All	1979-80
21	6025 004	1	All	NUT
22	118 614	2	All	NUT
23	2460 609	1	All	BOLT w/"O" Ring, Brake Pedal
24		1	All	"O" RING (Not Serviced)
25	181 088	1	All	BOLT
26		1		BRACKET, Steering Gear (Refer to Group 19)
27	3641 516	1	M3-4-5	SPRING, Extension, 5-1/2"
	4030 266	1	M6	4-1/4"
28	563 753	1	All	SPRING, Brake Lever
29	6023 110	1	All	NUT
30	3634 529	1	M3	BRACKET, Spring, 1978
	3640 913	1	M4-5-6	1978
	3640 913	1	All	1979-80
31	181 112	1	All	BOLT

LIGHT A = All Sport Utility (Ramcharger).

B = All Compact Models.

D = Conventional Cab.

DUTY AD = 2 Wheel Drive Only (Ramcharger).

CB-MB = Compact Front Section Only.

W = Conventional Cab 4 Wheel Drive.

CODES: AW = 4 Wheel Drive Only (Ramcharger).

P = Forward Control Chassis.

M = Motor Home.

MEDIUM-HEAVY CODES: XNT = Low Cab Forward. D = Conventional Cab. S = School Bus. W = 4-Wheel Drive.

AR=Use as Required

=New Part Number

Printed in U.S.A.

June, 1982

1978-81 LIGHT DUTY TRUCK PARTS CATALOG

BRAKE, SERVICE

ITEM	PART NUMBER	QTY	MODEL	DESCRIPTION
CONTROLS, BRAKE				
M3-4-5-6				
32	181 088	1	All	BOLT
33	3638 641	1	All	SHIELD, Heat
	4167 832	1	All	w/IHC Eng.
34	4112 297	2	All	BUSHING, Brake Pedal, 1979-80
35	4112 298	2	All	SEAL, Brake Pedal Bushing, 1979-80

LIGHT	A = All Sport Utility (Ramcharger).	B = All Compact Models.	D = Conventional Cab.
DUTY	AD = 2 Wheel Drive Only (Ramcharger).	CB-MB = Compact Front Section Only.	W = Conventional Cab 4 Wheel Drive.
CODES:	AW = 4 Wheel Drive Only (Ramcharger).	P = Forward Control Chassis.	M = Motor Home.

MEDIUM-HEAVY CODES: XNT = Low Cab Forward. D = Conventional Cab. S = School Bus. W = 4-Wheel Drive.

AR=Use as Required

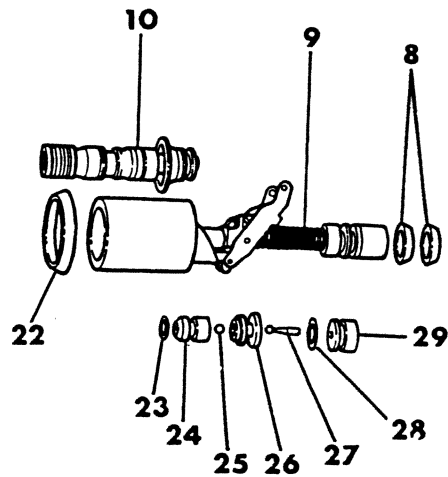
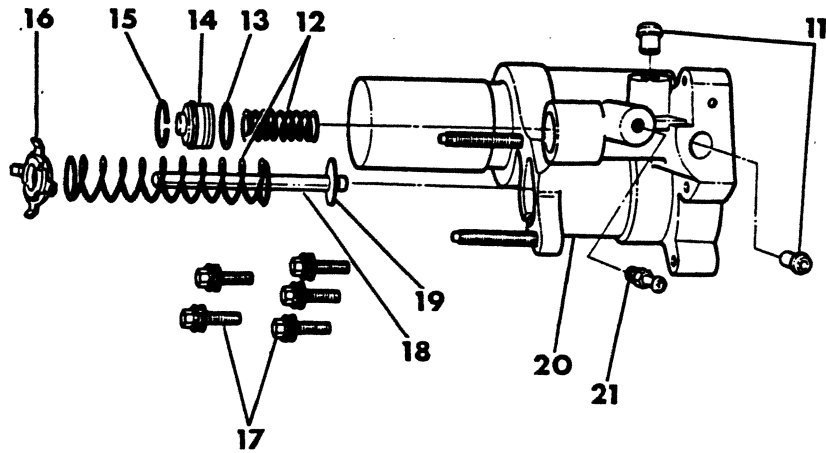
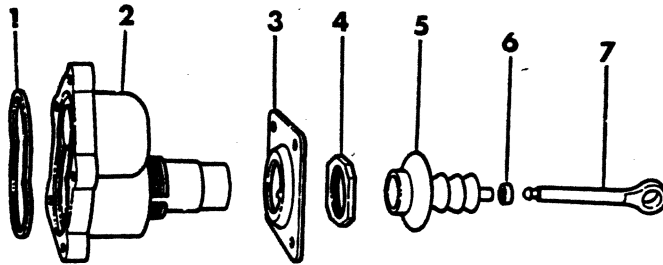
= New Part Number

Printed in U.S.A.

June, 1982

8305 900

HYDRO BOOSTER COMPONENTS, B - D - M



ITEM	PART NUMBER	QTY	MODEL	DESCRIPTION
				HYDRO BOOSTER COMPONENTS, B - D - M
	4117 566	1	M-CB-MB-B3	SERVICE KIT - General Seal
	4089 229	1	D-W,B1-2-3	
	4089 232	1	D-W	SERVICE KIT, Spool Plug Seal
	4086 464	1	All	SERVICE KIT - Accumulator Valve
	4089 231	1	D-W	SERVICE KIT - Accumulator Cap Seal
	4089 230	1	D-W	SERVICE KIT - Power Piston
1		1		SEAL (Serviced in Seal Kit)
2		1		COVER (Serviced in Assy.)
3	4031 356	1	M-CB-MB	BRACKET
4	4031 357	1	All	NUT
5	4031 354	1	M-CB-MB	BOOT (Also in Seal Kit)
6	4031 353	1	M-CB-MB	GROMMET (Also in Seal Kit)
7	4031 355	1	M-CB-MB	ROD
8		1		SEALS (Serviced in Seal Kit)
9		1		ROD and PISTON, Input (Serviced in Assy.)
10		1		SPOOL and SLEEVE ASSY. (Serviced in Assy.)
11		1		SEAT, Tube (Serviced in Seal Kit)
12		1		SPRING (Serviced in Assy.)
	4032 855	1	M-CB-MB	Piston Return
13		1		SEAL (Serviced in Seal Kit)
14		1		PLUG (Serviced in Assy.)
15		1		RING, Retainer (Serviced in Assy.)
16	4036 957	1	M-CB-MB	BAFFLE
	4032 853	1	M-CB-MB	RETAINER, Baffle
17		5		SCREWS (Serviced in Assy.)
18	4032 489	1	M-CB-MB	ROD, Push
19	4036 451	1	M-CB-MB	RETAINER, Push Rod
20		1		HOUSING (Serviced in Assy.)
21		1		"O" RING (Not Serviced)
22		1		SEAL (Serviced in Seal Kit)
23		1		SEAL (Not Serviced)
24		1		VALVE, Check (Serviced in Valve Kit)
25		1		BALL (Serviced in Valve Kit)
26		1		SPACER (Not Serviced)
27		1		PLUNGER (Serviced in Valve Kit)
28		1		SEAL (Serviced in Valve Kit)
29		1		SEAT and GUIDE ASSY., Plunger (Serviced in Valve Kit)

LIGHT A = All Sport Utility (Ramcharger).

B = All Compact Models.

D = Conventional Cab.

DUTY AD = 2 Wheel Drive Only (Ramcharger).

CB-MB = Compact Front Section Only.

W = Conventional Cab 4 Wheel Drive.

CODES: AW = 4 Wheel Drive Only (Ramcharger).

P = Forward Control Chassis.

M = Motor Home.

MEDIUM-HEAVY CODES: XNT = Low Cab Forward. D = Conventional Cab. S = School Bus. W = 4-Wheel Drive.

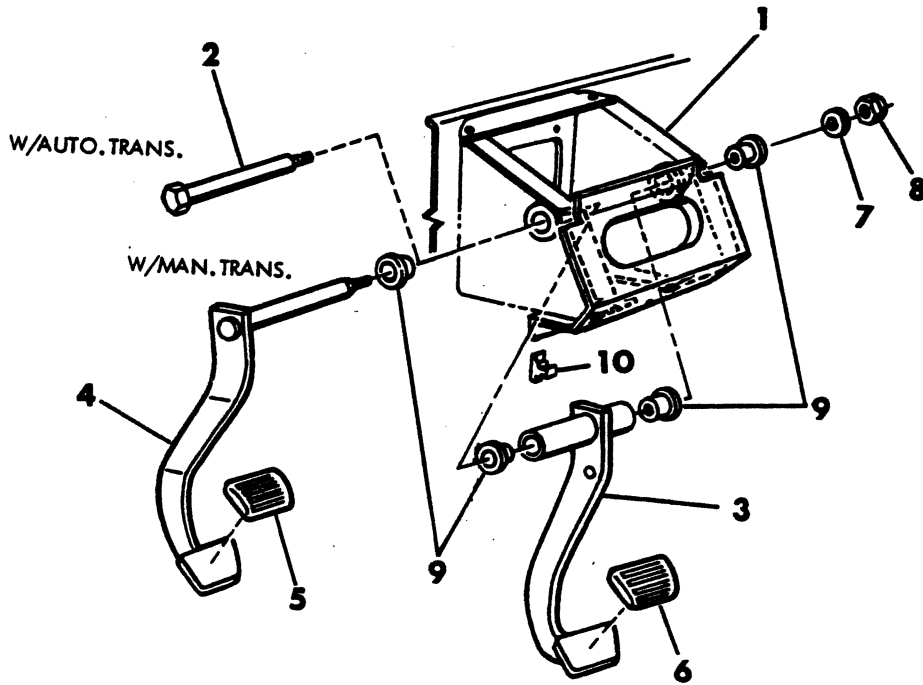
AR=Use as Required

= New Part Number

Printed in U.S.A.

June, 1982

PEDAL, BRAKE
B1-2-3, MB3-4, CB3-4



ITEM	PART NUMBER	QTY	MODEL	DESCRIPTION
PEDAL, BRAKE				
B1-2-3, MB3-4, CB3-4				
1	4083 361	1		SUPPORT, Pedal, 1978
	4080 620	1		1979
	4168 972	1		1980
	4262 005	1		1981
2	2955 315	1		SHAFT, Pedal, w/Auto. Trans.
3	3637 753	1		PEDAL W/BUSHING, w/Man. Brakes, 1978
	4088 821	1		w/Man. Brakes, 1979-80-81
	4086 754	1		w/Power Brakes, 1978
	4036 443	1		w/Power Brks. w/3600 lb. Front Axle, 1979-80-81
	4036 441	1		w/Power Brakes, w/3600 lb. Front Axle, w/Aux. Battery, 1979-80-81
	4036 441	1		w/Power Brakes, w/4000 lb. Front Axle, 1979-80
	4036 441	1		w/Diesel, 1979
	4036 587	1		w/Power Brakes, Auto. Trans.
4		1		PEDAL (Refer to Group 6)
5		1		PAD (Refer to Group 6)
6	2955 312	1		PAD, Pedal, 1978
	4089 163	1		1979-80 w/o Pwr.Brks.
	4089 130	1		w/ Pwr.Brks.
7	2128 774	2		WASHER OR SPACER, Pedal Shaft
8	152 349	1		NUT, Pedal Shaft
9	1799 558	2		BUSHING, Pedal Shaft
10	2266 820	1		BUMPER OR STOP, Pedal

LIGHT	A = All Sport Utility (Ramcharger).	B = All Compact Models.	D = Conventional Cab.
DUTY	AD = 2 Wheel Drive Only (Ramcharger).	CB-MB = Compact Front Section Only.	W = Conventional Cab 4 Wheel Drive.
CODES:	AW = 4 Wheel Drive Only (Ramcharger).	P = Forward Control Chassis.	M = Motor Home.

MEDIUM-HEAVY CODES: XNT = Low Cab Forward. D = Conventional Cab. S = School Bus. W = 4-Wheel Drive.

AR=Use as Required

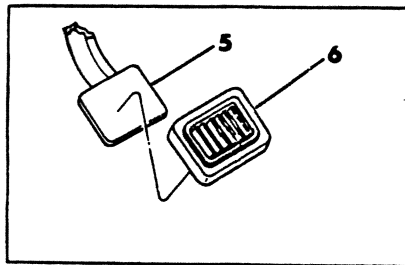
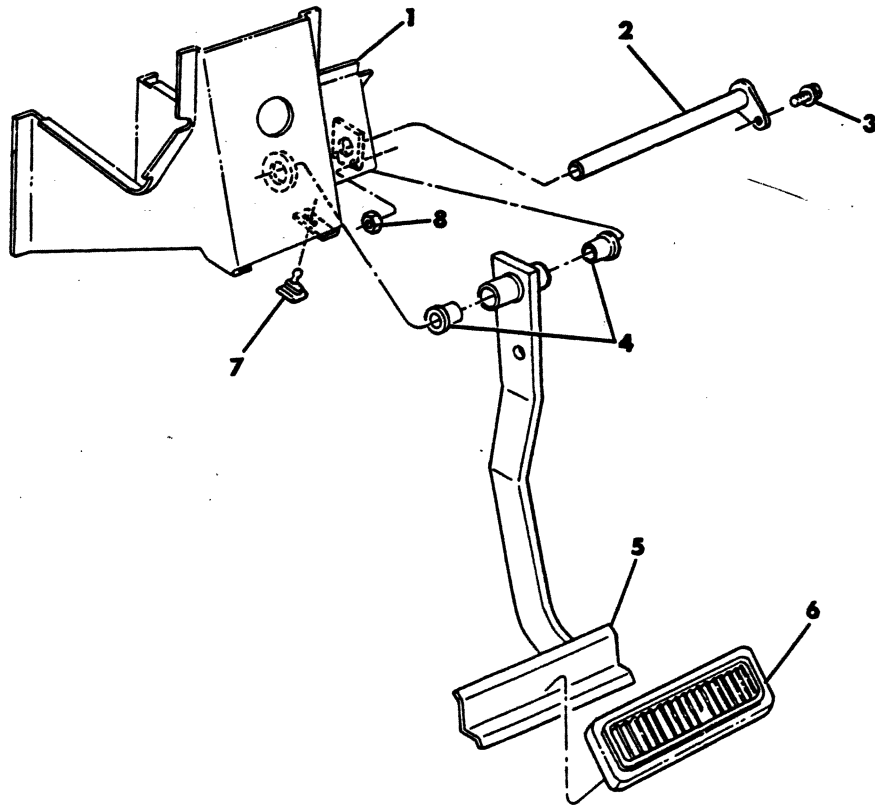
= New Part Number

Printed in U.S.A.

June, 1982

8305 1100

PEDAL, BRAKE
AD-AW1, D1-2-3-4, W1-2-3-4, RD2



WITH MANUAL TRANSMISSION

ITEM	PART NUMBER	QTY	MODEL	DESCRIPTION
PEDAL, BRAKE				
AD-AW1, D1-2-3-4, W1-2-3-4, RD2				
1	3729 373	1	All	SUPPORT, Brake Pedal, 1978
	4087 962	1	All	1979-80
	4160 432	1	All	1981
2	3491 621	1	All	SHAFT, Brake Pedal
3	6024 067	1	All	SCREW, 10-24 x 3/4
4	1799 558	2	All	BUSHING, Pedal Shaft
5				PEDAL, Brake, W/MANUAL TRANS.
	3491 618	1	D1	w/o Power Brakes, 1978
	4088 193	1	D1	w/o Power Brakes, 1979-80-81
	3491 618	1	D2-3-4	w/Power Brakes
	3491 618	1	A-D-W1	w/Power Brakes, 1979-80-81
	3491 618	1	W2	w/Power Brakes, w/3500 lb. Front Axle
	3637 758	1	AD-D-W1	w/Power Brakes, 1978
	3637 758	1	AW1	w/Power Brakes, Except 440 Eng., 1978
	3637 758	1	W2-3-4	w/Power Brakes, w/4500 lb. Front Axle
	4037 979	1	D,W1-2	w/Power Brakes, w/Diesel
				W/AUTOMATIC TRANS.
	3496 930	1	D1	w/o Power Brakes, 1978
	4088 195	1	D1	w/o Power Brakes, 1979-80-81
	3496 930	1	D2-3-4	w/Power Brakes
	3496 930	1	W2	w/Power Brakes, w/3500 lb. Front Axle
	3496 930	1	A-D-W1	w/Power Brakes, w/440 Eng., 1978 & 80
	3496 930	1	RD2	w/Power Brakes
	3637 759	1	A-D-W1	w/Power Brakes, Except 440 Eng., 1978
	3496 930	1	A-D-W1	w/Power Brakes, 1979-80-81
	3637 759	1	W2-3-4	w/Power Brakes, w/4500 lb. Front Axle
	4037 978	1	D,W1-2	w/Power Brakes, w/Diesel
6	3492 837	1	All	PAD, Auto. Trans.
	3492 833	1	All	Man. Trans.
7	2266 820	1	All	BUMPER, Brake Pedal
8		1	All	NUT, 10-24 (Not Serviced)

LIGHT A = All Sport Utility (Ramcharger). B = All Compact Models. D = Conventional Cab.
DUTY AD = 2 Wheel Drive Only (Ramcharger). CB-MB = Compact Front Section Only. W = Conventional Cab 4 Wheel Drive.
CODES: AW = 4 Wheel Drive Only (Ramcharger). P = Forward Control Chassis. M = Motor Home.

MEDIUM-HEAVY CODES: XNT = Low Cab Forward. D = Conventional Cab. S = School Bus. W = 4-Wheel Drive.

AR=Use as Required

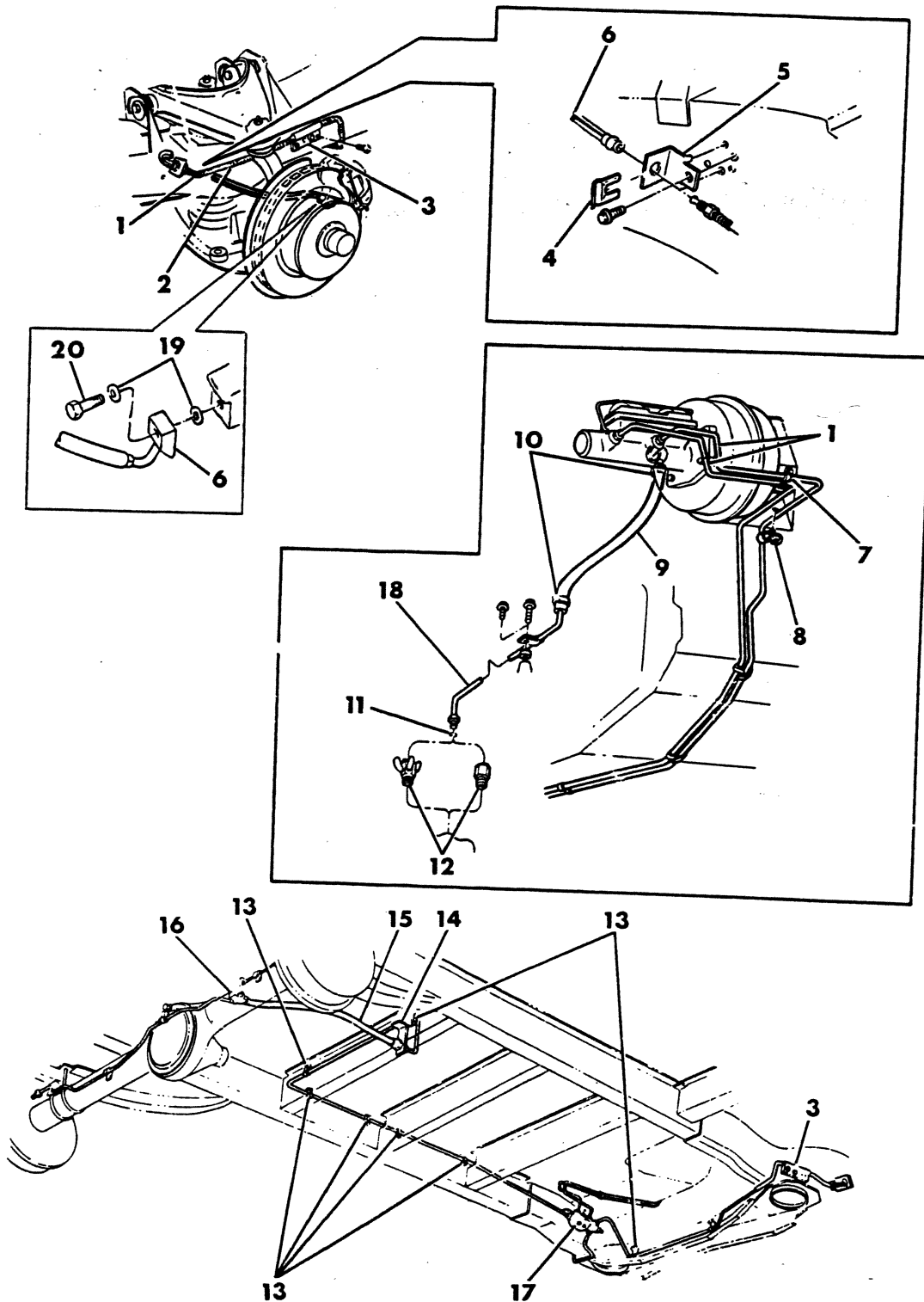
= New Part Number

Printed in U.S.A.

June, 1982

8305 1300

LINES AND HOSES, BRAKE
B-CB-MB



ITEM	PART NUMBER	QTY	MODEL	DESCRIPTION
LINES AND HOSES, BRAKE B-CB-MB				
1	1843 251	AR	All	TUBING, Brake Line, 25 Ft. Roll, 3/16" O.D.
	1843 252	AR	All	1/4" O.D.
	1843 253	AR	All	5/16" O.D.
	1843 254	AR	All	3/8" O.D.
2	3879 283	AR	All	COVER, Tubing, 25 Ft. Roll, 3/16" O.D.
	3879 284	AR	All	1/4" O.D.
	4026 140	AR	All	3/8" O.D.
3	3640 629	2	All	BRACKET, Tube (Shield)
4	2208 893	AR	All	LOCK, Brake Hose
5	4039 702	1	All	BRACKET, Front Hose Anchor, Right
	4039 701	1	All	Left
6	4176 785	2	All	HOSE, Front, w/Bracket, 1978
	4086 748-9	1	All	w/Bracket, up to 5-15-79
	4210 866-7	1	All	after 5-15-79
7	2465 517	1	All	CLIP
8	3641 830	1	All	CLIP
9	3879 277	AR	All	HOSE, 11/16", 50 Ft. Roll
10		2	All	CLAMP, (Not Serviced)
11	2219 383	1	All	"O" RING, Tube
12		1	All	CONNECTOR, Vacuum (See Chart)
13	3492 980	AR	All	CLIP, Tubing
14	2914 615	1	All	BRACKET, Tube
15	4037 711	1	All	HOSE W/TEE, Rear, 1978
	4115 557	1	All	1979-80
	4164 537	1	All	1981
16		1	All	TEE, Brake Hose (Not Serviced)
17	4131 254	1	B,CB,MB3-4	VALVE, Metering and Warning, 1978
	4131 280	1	B,CB,MB3-4	1979-80-81
	4094 118	1	B1-2	1978
	4131 281	1	B1-2	1979-80-81
	3620 790	1		SWITCH, Metering & Warning
18	3641 560	1	All	TUBE, Booster Vacuum, w/225 Eng., Up to 2-15-79
	4164 231	1	All	After 2-15-79
	3641 561	1	All	w/318-360 Eng., w/2 Bbl. Carb.
	4086 704	1	All	w/318-360 Eng., w/4 Bbl. Carb.
	3828 419	1	All	w/400 Eng., Up to Approx. 6-1-78
	4112 888	1	All	w/400 Eng., After Approx. 6-1-78
	3898 995	1	All	w/440 Eng.
19	6030 084	4	All	GASKET, Brake Hose
20	6030 026	2	All	SCREW, Brake Hose

LIGHT A = All Sport Utility (Ramcharger).

B = All Compact Models.

D = Conventional Cab.

DUTY AD = 2 Wheel Drive Only (Ramcharger).

CB-MB = Compact Front Section Only.

W = Conventional Cab 4 Wheel Drive.

CODES: AW = 4 Wheel Drive Only (Ramcharger).

P = Forward Control Chassis.

M = Motor Home.

MEDIUM-HEAVY CODES: XNT = Low Cab Forward. D = Conventional Cab. S = School Bus. W = 4-Wheel Drive.

AR=Use as Required

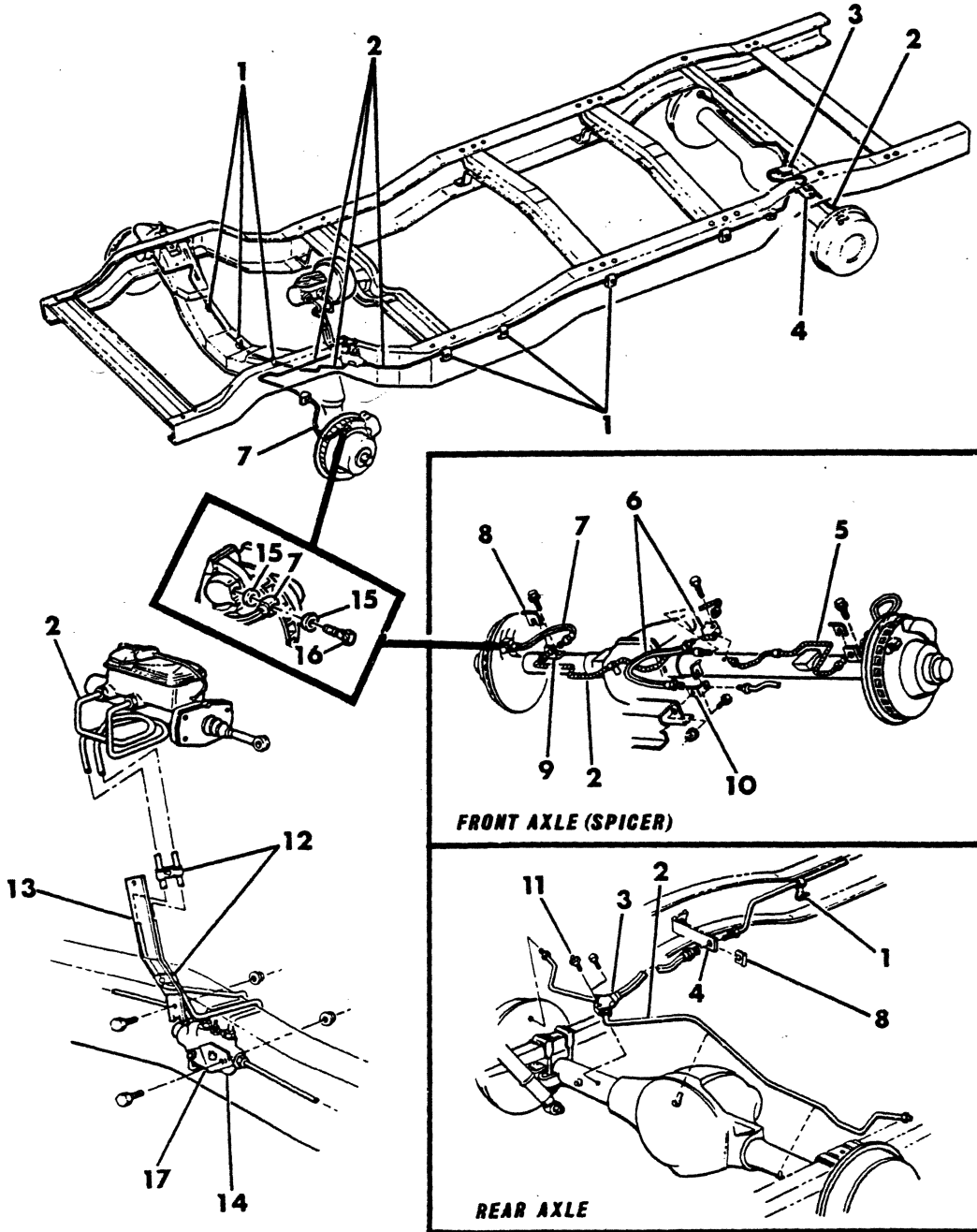
= New Part Number

Printed in U.S.A.

June, 1982

8305 1400B

LINES AND HOSES, BRAKE AD1, AW1, D1-2-3-4, W1-2-3-4, RD2



ITEM	PART NUMBER	QTY	MODEL	DESCRIPTION
LINES AND HOSES, BRAKE				
AD1, AW1, D1-2-3-4, W1-2-3-4, RD2				
1	3633 586	AR	A, D, W	CLIP, Brake Hose
2	1843 251	AR	All	TUBING, Brake Line, 25 Ft. Roll, 3/16" O.D.
	1843 252	AR	All	1/4" O.D.
	1843 253	AR	All	5/16" O.D.
	1843 254	AR	All	3/8" O.D.
3	4031 299	1	A,D,W	HOSE W/TEE, Rear, 1978
	4115 556	1	A,D,W	1979-80-81
4	4030 242	1	A, D, W	BRACKET, Hose, Rear
5	3879 283	AR	All	COVER, Brake Tube, 25 Ft. Roll, 3/16" O.D.
	3879 284	AR	All	1/4" O.D.
6	3898 996	1	AW, W, RD2	HOSE W/TEE, Front, 1978
	4112 325	1	AW, W, RD2	1979-80-81
7	4030 474	2	AW, W	HOSE, Front, w/3500 lb. Axle, 1978
	4115 552	2	AW, W	1979-80-81
	4031 150	2	W2-3-4	w/4500 lb. Axle, Up to 1-3-78
	4036 450	2	AD, D	
	4115 559	2	RD2	w/Bracket, 1978-79-80-81
	4089 496-7	1	W2-3-4	w/ Bracket, w/4500 lb. Axle, After 1-3-78
	4115 622-3	1	W2-3-4	w/Bracket, w/4500 lb. Axle, 1979-80-81
8	2208 893	AR	ALL	LOCK, Brake Hose
9	3823 036	2	AW-W1,2	BRACKET, Inner
10	4030 399	1	AW, W, RD2	BRACKET, On C/Member
11	4032 798	1	A, D, W	SCREW AND VENT, w/Spicer Axle
	182 753	1	A, D, W	Screw, w/Chrysler Axle
12	3641 830	2	A, D, W	CLIP, Brake Tube
13	3634 316	1	A, D, W	BRACKET, Tube Support
14	4131 254	1	D,W2-3-4,RD2	VALVE, Metering and Warning, 1978
	4131 280	1	D,W2-3-4,RD2	1979-80-81
	4094 118	1	A, D, W1	1978
	4131 281	1	A, D, W1	1979-80-81
15	6030 084	4	All	GASKET, Hose Screw
16	6030 026	2	AW-W	SCREW, Hose, w/3500 lb. Axle
	6030 230	2	W	w/4500 lb. Axle
	6030 026	2	AD-D	
17	4112 696	1	D-W3	BRACKET, Valve Mounting, w/Frame Reinforcement, 1979-80
	4238 022	1	D-W3	1981
	4115 839	1	All	w/o Frame Reinforcement, 1979-80-81
	4112 938	1	D3	CLIP, Valve to Front Axle Tube, w/Frame Reinforcement, 1979-80-81

LIGHT A = All Sport Utility (Ramcharger).

B = All Compact Models.

D = Conventional Cab.

DUTY AD = 2 Wheel Drive Only (Ramcharger).

CB-MB = Compact Front Section Only.

W = Conventional Cab 4 Wheel Drive.

CODES: AW = 4 Wheel Drive Only (Ramcharger).

P = Forward Control Chassis.

M = Motor Home.

MEDIUM-HEAVY CODES: XNT = Low Cab Forward. D = Conventional Cab. S = School Bus. W = 4-Wheel Drive.

AR=Use as Required

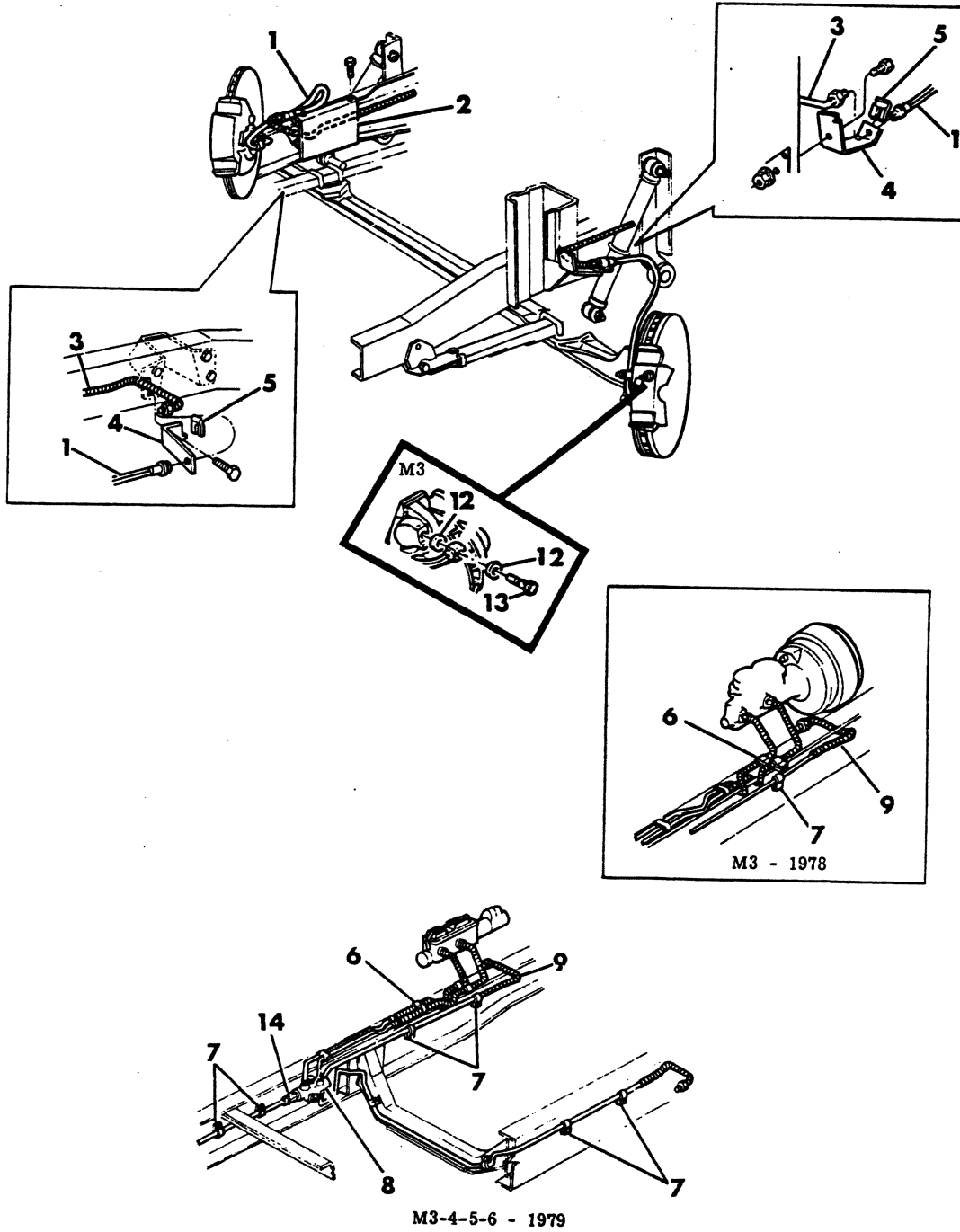
= New Part Number

Printed in U.S.A.

June, 1982

8305 1600B

LINES AND HOSE, BRAKE, FRONT M3-4-5-6



ITEM	PART NUMBER	QTY	MODEL	DESCRIPTION
LINES AND HOSE, BRAKE, FRONT				
M3-4-5-6				
1	4086 810-1	1	M3	HOSE, Front, 1978
	3894 749	2	M4-5	1978
	4030 310	2	M6	1978
	4117 541	2	M3-4-5-6	1979-80
	4115 584	2	M5-6	1979-80
2		1		SHIELD, Heat (Not Serviced)
3	1843 251	AR	All	TUBING, Brake Line, 25 Ft. Roll, 3/16" O.D.
	1843 252	AR	All	1/4" O.D.
	1843 253	AR	All	5/16" O.D.
	1843 254	AR	All	3/8" O.D.
4	4086 810-1	1	M3	BRACKET, Hose Anchor, w/Hose, 1978
	3640 586	1	M4-5-6	w/o Hose, Right, 1978
	3640 586	1	M3-4-5-6	w/o Hose, Right, 1979-80
	3735 441	1	M4-5	w/o Hose, Left, 1978
	4030 309	1	M6	w/o Hose, Left, 1978
	4030 309	1	M3-4-5-6	w/o Hose, Left, 1979-80
5	2208 893	AR	All	LOCK, Hose Anchor
6	1163 805	2	All	CLIP
7	3638 731	11	All	CLIP
8	4131 254	1	All	VALVE, Metering and Warning
9	3879 283	AR	All	COVER, Brake Tube, (Spring) 25 Ft. Roll, 3/16" O.D.
	3879 284	AR	All	1/4" O.D.
10	4032 046	1	M3	AIR CLEANER, Booster
11		AR	All	HOSE (Service Roll Stock 5/8")
12	6030 084	4	All	GASKET, Bolt to Caliper
13	6030 230	2	M3	BOLT, Hose to Caliper, 1978
14	3820 904	1	M4-5-6	VALVE, Brake Line Residual, 1978
	3820 904	1	All	1979-80

LIGHT	A = All Sport Utility (Ramcharger).	B = All Compact Models.	D = Conventional Cab.
DUTY	AD = 2 Wheel Drive Only (Ramcharger).	CB-MB = Compact Front Section Only.	W = Conventional Cab 4 Wheel Drive.
CODES:	AW = 4 Wheel Drive Only (Ramcharger).	P = Forward Control Chassis.	M = Motor Home.

MEDIUM-HEAVY CODES: XNT = Low Cab Forward. D = Conventional Cab. S = School Bus. W = 4-Wheel Drive.

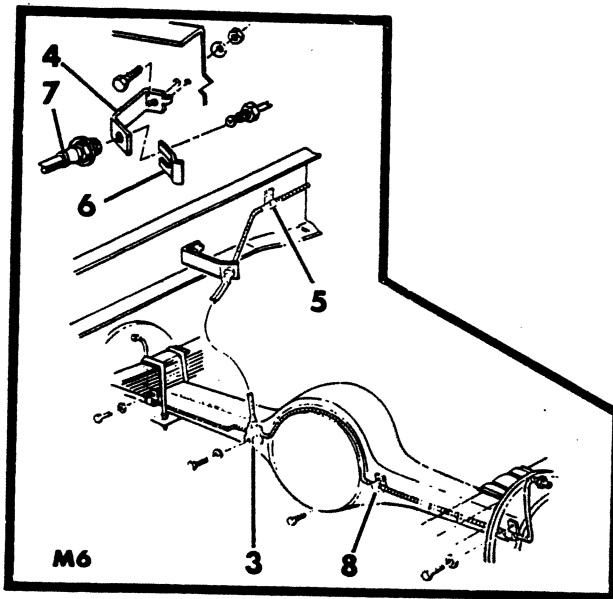
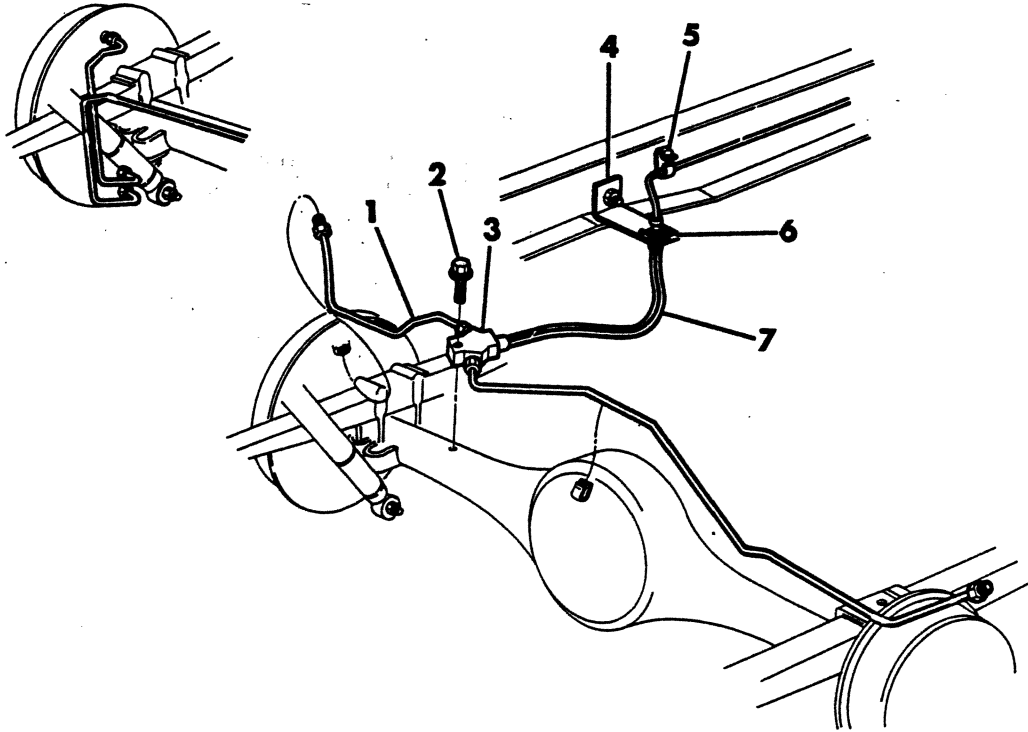
AR=Use as Required

= New Part Number

Printed in U.S.A.

June, 1982

LINES AND HOSES, BRAKE, REAR
M3-4-5-6



ITEM	PART NUMBER	QTY	MODEL	DESCRIPTION
LINES AND HOSES, BRAKE, REAR				
M3-4-5-6				
1	1843 251	AR	All	TUBING, Brake Line, 25 Ft. Roll, 3/16" O.D.
	1843 252	AR	All	1/4" O.D.
	1843 253	AR	All	5/16" O.D.
	1843 254	AR	All	3/8" O.D.
2	4032 798	1	M3-4-6	SCREW, Vent
	3735 100	1	M5	
3	3638 722	1	M5-6	TEE, Brake Line
4	3633 225	1	All	BRACKET, Tube and Hose Union, 1978
	3633 225	1	M3-4-5	1979-80
5	3638 731	AR	All	CLIP, Brake Tube
6	2208 893	1	All	LOCK, Brake Hose
7	3894 751	1	M5	HOSE, Brake, Rear, 1978
	4115 565	1	M5	1979-80
	3894 752	1	M6	1978
	4115 566	1	M6	1979-80
	3894 729	1	M3-4	w/Tee, 1978
	4115 561	1	M3-4	1979-80
8	1263 079	1	M6	CLIP, Tubing

LIGHT A = All Sport Utility (Ramcharger). B = All Compact Models. D = Conventional Cab.
DUTY AD = 2 Wheel Drive Only (Ramcharger). CB-MB = Compact Front Section Only. W = Conventional Cab 4 Wheel Drive.
CODES: AW = 4 Wheel Drive Only (Ramcharger). P = Forward Control Chassis. M = Motor Home.

MEDIUM-HEAVY CODES: XNT = Low Cab Forward. D = Conventional Cab. S = School Bus. W = 4-Wheel Drive.

AR=Use as Required

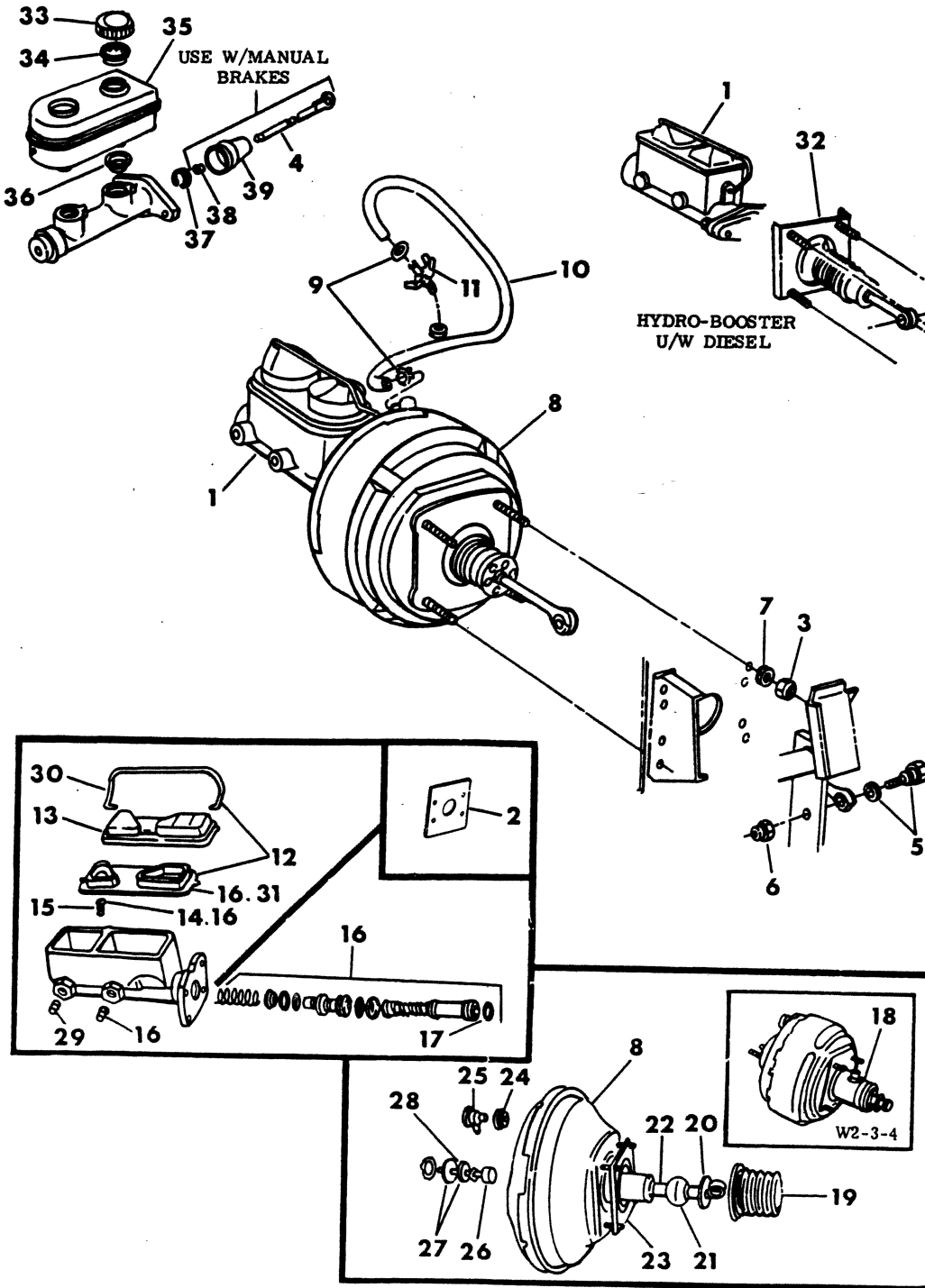
=New Part Number

Printed in U.S.A.

June, 1982

8305 1800E

BOOSTER - MASTER CYLINDER AND MOUNTING A - D - W - RD2



ITEM	PART NUMBER	QTY	MODEL	DESCRIPTION
BOOSTER - MASTER CYLINDER AND MOUNTING				
A - D - W - RD2				
1				CYLINDER, Master
	3699 241	1	A-D-W100	w/o 440 Eng., w/Power Disc, 1978
	4089 212	1	A-D-W100	w/440 Eng., w/Power Disc, 1978
	3766 183	1	A-D-W100	All Engines, Aluminum Type, 1979-80
	3699 241	1	A-D-W100	All Engines, Cast Iron Type, 1979
	4089 212	1	D2-3-4	1978
	3766 183	1	D2-3-4 W-RD2	Aluminum Type, 1979-80
	4213 241	1	A-D-W RD2	1981 w/Pwr.Brks.
	4089 212	1	W2, RD2	w/3500 lb. Front Axle, 1978
	3699 241	1	D100	w/Manual Disc, 1978
	3766 201	1	D100	w/Manual Disc, Aluminum Type, 1979
	4213 242	1	D100	w/Manual Disc, Aluminum Type, 1980-81
	4089 222	1	W 2-3-4	w/4500 lb. Front Axle, 1978
	4112 654	1	W 2-3-4	w/4500 lb. Front Axle, 1979-80-81
	4089 223	1	D, W100-200	w/Hydro-Booster, u/w Diesel
2	3638 184	1	D100	SEAL, Dash, 1978
	4088 819	1	D100	1979-80-81
	4088 818	1	D100	ADAPTER PLATE, M/Cylinder to Dash
3	118 614	4	D100	NUT, M/Cylinder Mounting, 5/16 - 18
	152 344	4	All	B/Cylinder Mounting, 3/8 - 16
4	3491 601	1	D100	ROD, Primary Piston Push, 1978
	4088 834	1	D100	1979-80-81
5	2460 609	1	All	BOLT, w/"O" Ring
6	6023 110	1	All	NUT, Lock
7				WASHER (Not Serviced)
8				CYLINDER, Booster
	4094 149	1	A-D-W100	w/o 440 Eng., 1978
	4115 079	1	A-D-W100	w/440 Eng., 1978
	4088 828	1	A-D-W100	All Engines, w/Aluminum M/Cylinder, 1979-80
	4238 008	1	A-D-W100	1981 w/Pwr.Brks.
	4094 149	1	A-D-W100	All Engines, w/Cast Iron M/Cylinder, 1979
	4115 079	1	D2-3-4	1978
	4088 832	1	D2-3-4 W-RD2	1979-80-81 3500 Frt.Axle
	4115 079	1	W2, RD2	w/3500 lb. Front Axle, 1978
	3893 594	1	W 2-3-4	w/4500 lb. Front Axle
	4116 423	1	D, W100-200	Hydro-Booster, u/w Diesel, 1978-79-80
9				CLAMP (Not Serviced)
10	3879 277	AR	All	HOSE, Vacuum (Roll Stock)
11				CONNECTOR, Vacuum (See Connector Chart)
12				GASKET AND CLAMP PACKAGE
	4049 652	1		w/3699241 M/Cyl.
	4049 658	1		w/4089222 & 4112654 M/Cyl.
13				COVER, Master Cylinder
	3699 113	1		w/3699241 M/Cyl.
	3733 461	1		w/4089222 & 4112654 M/Cyl.
	4089 219	1		w/4089212 and 4089223 M/Cyl.
14				SCREW, Piston Stop
	6029 516	1		w/3699241 M/Cyl.
	3893 593	1		w/4089222 & 4112654 M/Cyl.

LIGHT A = All Sport Utility (Ramcharger).

B = All Compact Models.

D = Conventional Cab.

DUTY AD = 2 Wheel Drive Only (Ramcharger).

CB-MB = Compact Front Section Only.

W = Conventional Cab 4 Wheel Drive.

CODES: AW = 4 Wheel Drive Only (Ramcharger).

P = Forward Control Chassis.

M = Motor Home.

MEDIUM-HEAVY CODES: XNT = Low Cab Forward. D = Conventional Cab. S = School Bus. W = 4-Wheel Drive.

AR=Use as Required

= New Part Number

Printed in U.S.A.

June, 1982

1978-81 LIGHT DUTY TRUCK PARTS CATALOG

BRAKE, SERVICE

ITEM	PART NUMBER	QTY	MODEL	DESCRIPTION
BOOSTER - MASTER CYLINDER AND MOUNTING				
A - D - W - RD2				
15				*O* RING, Stop Screw (Not Serviced)
16				REPAIR PACKAGE, Master Cylinder
	4049 655	1		w/3699241 M/Cyl.
	3879 253	1		w/4089222 & 4112654 M/Cyl.
	4131 272	1		w/4089212 M/Cyl.
	4131 271	1		w/4089223 M/Cyl.
	4176 773	1		w/3766183 M/Cyl., 1979-80
	4205 975	1		1981 w/Pwr.Brks.
	4176 774	1		w/3766201 M/Cyl., 1979-80
	4205 976	1		1981 w/Man.Brks.
17				STOP, Primary Piston
	6029 170	1		w/3699241 M/Cyl.
18				RETAINER, Housing Gasket
	3633 546	1		w/3893594 Booster
	3633 547	1		Fastener, Retainer, w/3893594 Booster
19				BOOT, Push Rod
	3633 324	1		w/4094149-4088828 Booster, Bendix
	3461 001	1		w/4094149 Booster, Midland
	3633 548	1		w/3893594 Booster
	4089 227	1		w/4089224 Booster
	2534 349	1		w/4088832 Booster
20				FILTER, Push Rod
	3461 291	1		w/4094149 Booster, Bendix
	3461 003	1		w/4094149 Booster, Midland
	3893 599	1		w/3893594 Booster
	2401 882	1		w/4088828 Booster
21				SILENCER, Valve
	3461 302	1		w/4094149-4088828-4088832 Booster, Bendix
	3461 302	1		w/4089221 & 4115079 Booster
	3893 595	1		w/3893594 Booster
	3893 596	1		RETAINER, Silencer, w/3893594 Booster
	2823 377	1		w/4088828 Booster
	2954 728	1		w/4088832 Booster
22				ROD, Booster Push
	4089 228	1		w/4089224 Hydro-Booster
23				GASKET, Mounting Spacer
	2954 726	1		w/4094149 Booster, Bendix
	3894 771	1		w/4094149 Booster, Midland
	2954 726	1		w/3893594 Booster
	2954 726	1		w/4089221 & 4115079 Booster
	4088 816	1		w/4088828 & 4088832 Booster
24				GROMMET, Check Valve
	2823 377	1		w/4094149-4088828-4088832 Booster, Bendix
	2467 576	1		w/4094149 Booster, Midland
25				VALVE, Check
	3420 128	1		w/4094149-4088828-4088832 Booster, Bendix
	3420 974	1		w/4094149 Booster, Midland (w/Grommet)
	3420 128	1		w/3893594 Booster
	3420 128	1		w/4089221 & 4115079 Booster

LIGHT A = All Sport Utility (Ramcharger). B = All Compact Models. D = Conventional Cab.
DUTY AD = 2 Wheel Drive Only (Ramcharger). CB-MB = Compact Front Section Only. W = Conventional Cab 4 Wheel Drive.
CODES: AW = 4 Wheel Drive Only (Ramcharger). P = Forward Control Chassis. M = Motor Home.

MEDIUM-HEAVY CODES: XNT = Low Cab Forward. D = Conventional Cab. S = School Bus. W = 4-Wheel Drive.

AR=Use as Required

=New Part Number

Printed in U.S.A.

June, 1982

ITEM	PART NUMBER	QTY	MODEL	DESCRIPTION
BOOSTER - MASTER CYLINDER AND MOUNTING				
A - D - W - RD2				
	2944 127	1		Cap, Check Valve, w/4094149 Booster, Midland
	2534 349	1		Boot, Valve Body, w/4089221 Booster
26				ROD, Master Cylinder Push
	2944 499	1		w/4094149 Booster, Midland
	2660 776	1		Screw, Rod, w/4094149 Booster, Midland
27				PLATE AND SEAL, Booster
	2401 894	1		w/4094149 Booster, Bendix
	3841 870	1		w/3893594-4088832 Booster
	4116 367	1		w/4088828 Booster
28				SEAL, Booster Front Shell
	2401 128	1		w/4089221 & 4115079 Booster
29				INSERT, Secondary Tube
	2072 678	1		w/4089212 & 223 M/Cyl.
30				CLAMP, M/Cylinder
	3821 722	1		w/4089212 & 223 M/Cyl.
31				GASKET, M/Cylinder Cover
	2881 512	1		w/4089212 & 223 M/Cyl.
32	4089 225	1	D,W1-2	BRACKET AND STUDS, Hydro-Booster Mounting
33	5204 056	2		CAP, Reservoir
34	5204 057	2		DIAPHRAGM, Cap
35	3766 449	1		RESERVOIR
36	5204 059	2		GROMMET, Reservoir
	5204 149	2		1980-81
37	6031 392	1		SNAP RING, Piston Stop
38	2074 960	1		RING, Push Rod Retaining
39	5204 051	1		BOOT, Push Rod

LIGHT	A = All Sport Utility (Ramcharger).	B = All Compact Models.	D = Conventional Cab.
DUTY	AD = 2 Wheel Drive Only (Ramcharger).	CB-MB = Compact Front Section Only.	W = Conventional Cab 4 Wheel Drive.
CODES:	AW = 4 Wheel Drive Only (Ramcharger).	P = Forward Control Chassis.	M = Motor Home.

MEDIUM-HEAVY CODES: XNT = Low Cab Forward. D = Conventional Cab. S = School Bus. W = 4-Wheel Drive.

AR=Use as Required

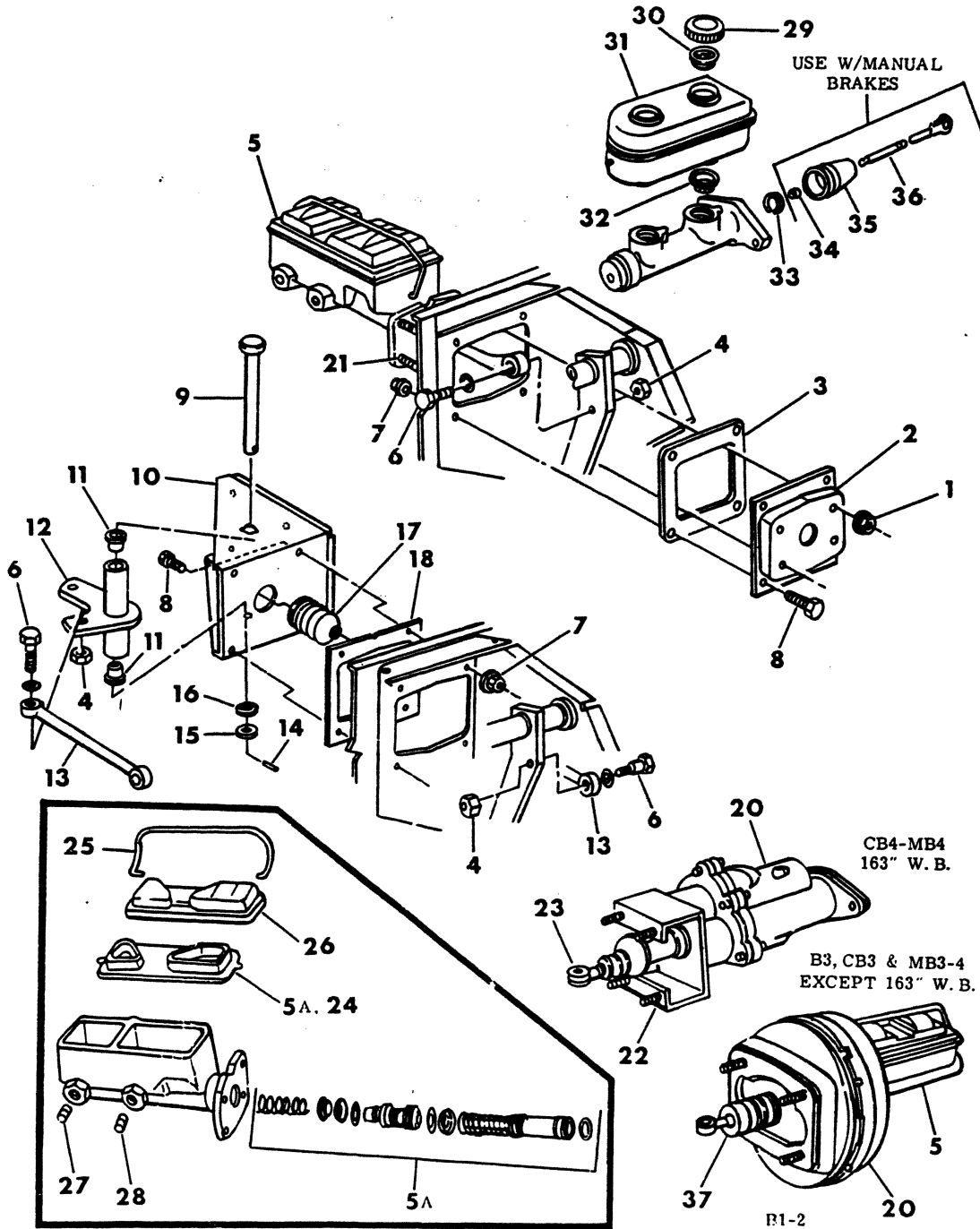
= New Part Number

Printed in U.S.A.

June, 1982

8305 1825E

BOOSTER, HYDRO-BOOSTER, MASTER CYLINDER & MOUNTING B, CB, MB



ITEM	PART NUMBER	QTY	MODEL	DESCRIPTION
BOOSTER, HYDRO-BOOSTER, MASTER CYLINDER & MOUNTING B, CB, MB				
1	118 614	4	B1	NUT, Stud, 5/16 - 18
2	3638 296	1	B1	BRACKET, Master Cylinder Mounting
3	3638 281	1	B1	SEAL, Bracket, 1978
	4088 819	1	B1	1979-80-81
	4088 818	1	B1	ADAPTER PLATE, M/Cylinder to Dash
4	6023 110	AR	B1	NUT, Lock, 7/16 - 20
5	3699 241	1	B1	CYLINDER, Master, w/Manual Disc, 1978
	3766 201	1	B1	Aluminum Type, w/Manual Disc, 1979-80-81
	3699 241	1	B1-2	w/Power Disc, 1978
	3766 183	1	B1-2-3	w/Power Disc, Aluminum Type, 1979-80
	4213 241	1	B1-2-3	1981 w/Pwr.Brks.
	4213 242	1	B1-2-3	1981 w/Man.Brks.
	4089 223	1	B1-2-3	w/Diesel, 1979
	4089 212	1	B3,CB,MB3-4	w/Power Disc, Except 163" W.B., 1978
	3766 183	1	CB,MB3-4	w/Power Disc, Except 163" W.B., Aluminum Type, 1979-80
	4031 345	1	CB4, MB4	w/Hydro-Booster, w/163" W.B.
5A				REPAIR PACKAGE, Master Cylinder
	4049 655	1	B1-2	w/3699241 Assy.
	4131 272	1	B,CB,MB3-4	w/4089212 Assy.
	4131 271	1	B1-2-3	w/4089223 Assy., w/Diesel, 1979
	4049 657	1	CB4, MB4	w/4031345 Assy.
	4176 773	1	B,CB,MB3-4	w/3766183 Assy., 1979-80-81
	4176 774	1	B1	w/3766201 Assy., 1979-80-81
6	2460 609	AR	All	BOLT, w/"O" Ring
7	6025 020	AR	B1	NUT, 3/8 - 16
8	6029 799	AR	B1	BOLT, 3/8 - 16 x .75
9	6029 987	1	All	SHAFT, Bellcrank, 1978
	4088 817	1	All	1979-80-81
10	3637 748	1	All	BRACKET, Booster Mounting, Except 163" W.B., 1978
	4088 815	1	All	1979-80-81
	4115 613	1	All	w/163" W.B.
11	2467 770	2	All	BUSHING, Bellcrank
12	3637 750	1	All	BELLCRANK, 1978
	4088 813	1	All	1979-80-81
13	2955 318	1	All	ROD, Pedal to Bellcrank, 1978
	4036 823	1	All	1979-80-81
14	9417 507	1	All	PIN, Spring
15		1	All	WASHER (Not Serviced)
16	905 206	1	All	WASHER, Spring
17	2955 739	1	All	BOOT, Push Rod
18	3637 749	1	All	GASKET, Mounting Bracket, 1978
	4088 816	1	All	1979-80-81
	4115 207	1	All	PLATE, Mounting Bracket, 1979-80-81 (Not Shown)
19	152 344	4	All	NUT, 3/8 - 16
20	3744 424	1	B1-2	CYLINDER, Booster, 1978
	4088 803	1	B1-2	w/o Diesel, 1979-80
	4238 051	1	B1-2	1981
	3632 657	1	B,CB,MB3-4	Except 163" W.B., 1978
	4088 807	1	B,CB,MB3-4	w/3600 lb. Front Axle, 1979-80-81

LIGHT	A = All Sport Utility (Ramcharger).	B = All Compact Models.	D = Conventional Cab.
DUTY	AD = 2 Wheel Drive Only (Ramcharger).	CB-MB = Compact Front Section Only.	W = Conventional Cab 4 Wheel Drive.
CODES:	AW = 4 Wheel Drive Only (Ramcharger).	P = Forward Control Chassis.	M = Motor Home.

MEDIUM-HEAVY CODES: XNT = Low Cab Forward. D = Conventional Cab. S = School Bus. W = 4-Wheel Drive.

AR=Use as Required

= New Part Number

Printed in U.S.A.

June, 1982

1978-81 LIGHT DUTY TRUCK PARTS CATALOG

BRAKE, SERVICE

ITEM	PART NUMBER	QTY	MODEL	DESCRIPTION
BOOSTER, HYDRO-BOOSTER, MASTER CYLINDER & MOUNTING B, CB, MB				
	4088 810	1	B,CB,MB3-4	w/3600,4000 Lb.Frt.Axle Transverse Mtg. w/Aux. Battery, 1979-80-81
	4086 467	1	CB4, MB4	Hydro-Booster, w/163" W.B., 1978
	4116 350	1	CB4, MB4	Hydro-Booster, w/163" W.B., 1978-79-80
	4210 816	1	CB,MB4,B3	Hydro-Boost 1978-79-80-81
SEAL, Booster to Dash				
	4088 816	1	All	w/4088803-4088807-4088810 Assy.
	2954 728	1		RETAINER, Valve Silencer, w/3632657-4088810 Assy.
	2823 377	1		w/4088803-4088807 Assy.
	3461 290	1		w/3744424 Assy.
SEAL AND PLATE, Front Shell, w/3632657 Assy.				
	2401 128	1		
	3841 870	1		w/3744424-4088810 Assy.
	4116 367	1		w/4088803 & 4088807 Assy.
VALVE, Check, Except Hydro-Booster				
	3420 128	1	All	
GROMMET, Check Valve, Except Hydro-Booster				
	2823 377	1	All	
FILTER, w/3744424 Assy.				
	3823 379	1		
	2401 882	1		w/4088803-4088807 Assy.
GUARD, Valve Body, w/3744424 Assy.				
	3491 490	1		
SILENCER, Booster Cylinder Valve				
	3461 302	1	All	
SPACER, Valve, w/3744424 Assy.				
	2954 725	1		
21	6031 077	4	B1	BOLT, Master Cylinder Mounting
22	4031 356	1	CB4, MB4	BRACKET AND STUDS, Hydro-Booster Mounting
23	4032 489	1	CB4, MB4	ROD, Hydro-Booster Push
24	2881 512	1		GASKET, Cover, w/4089212 & 223 M/Cyl.
	4049 652	1		GASKET AND CLAMP PKG., w/3699241 M/Cyl.
	4049 658	1		w/4031345 M/Cyl.
25	2944 381	1		CLAMP, Cover, w/4089212 & 223 M/Cyl.
		1		w/3699241 & 4031345 M/Cyl. (See Ref. # 24)
26	4089 219	1		COVER, w/4089212 & 223 M/Cyl.
	3733 461	1		w/4031345 M/Cyl.
	3699 113	1		w/3699241 M/Cyl.
27	2072 678	1		INSERT, Secondary Tube, w/4089212 M/Cyl.
28		1		INSERT, Primary Tube (Serviced in Assy.)
29	5204 056	2		CAP, Reservoir
30	5204 057	2		DIAPHRAGM, Cap
31	3766 449	1		RESERVOIR
32	5204 059	2		GROMMET, Reservoir
	5204 149	2		1980-81
33	6031 392	1		SNAP RING, Piston Stop
34	2074 960	1		RING, Push Rod Retaining
35	1828 388	1		BOOT, Push Rod, 1978
	5204 051	1		1979-80-81
36	3640 407	1		ROD, Push, 1978
	4240 505	1		ROD & RING PKG. 1979-80-81
37				BOOT, Booster Cylinder Push Rod
	3633 324	1		w/4088803-4088807 Booster
	2534 349	1		w/4088810 Booster

LIGHT A = All Sport Utility (Ramcharger). B = All Compact Models. D = Conventional Cab.
DUTY AD = 2 Wheel Drive Only (Ramcharger). CB-MB = Compact Front Section Only. W = Conventional Cab 4 Wheel Drive.
CODES: AW = 4 Wheel Drive Only (Ramcharger). P = Forward Control Chassis. M = Motor Home.

MEDIUM-HEAVY CODES: XNT = Low Cab Forward. D = Conventional Cab. S = School Bus. W = 4-Wheel Drive.

AR=Use as Required

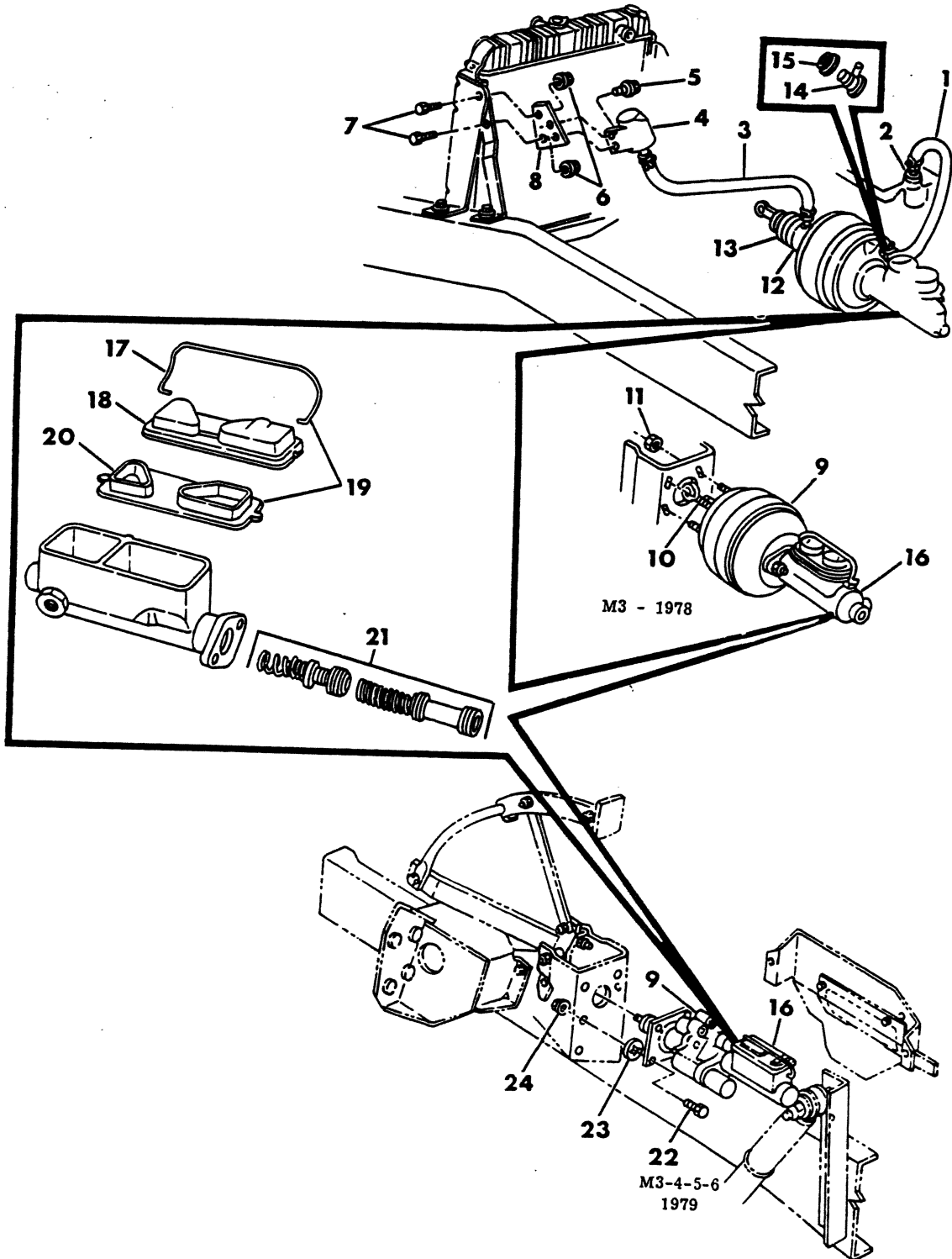
= New Part Number

Printed in U.S.A.

June, 1982

BOOSTER - MASTER CYLINDER AND MOUNTING M 3-4-5-6

8305 1850C



ITEM	PART NUMBER	QTY	MODEL	DESCRIPTION
BOOSTER - MASTER CYLINDER AND MOUNTING				
M 3-4-5-6				
1		AR	All	HOSE, Vacuum (Service Roll Stock)
2				CONNECTOR, Vacuum (See Connector Chart)
3	1315 466	AR	All	HOSE, Air Cleaner (5/8" Roll Stock)
4	4032 046	1	M3	CLEANER, Booster Air
5				SCREW, Tapping, 5/16 - 18 x .75 (Not Serviced)
6	6025 020	2	M3	NUT, 3/8 - 16
7	181 112	2	M3	BOLT, 3/8 - 16 x 1.0
8	4032 469	1	M3	BRACKET, Air Cleaner Mounting
9	3732 195	1	M3	CYLINDER, Booster, 1978
	4086 467	1	M4-5-6	Hydro-Booster, 1978
	4116 349	1	M3-4-5-6	Hydro-Booster, 1979-80
	4210 815	1	M3-4-5-6	KIT, SERV.1980
	2954 726	1	M3	GASKET, Mounting Spacer
	3641 870	1	M3	PLATE AND SEAL, Booster
	2959 424	1	M3	SILENCER, Valve
	2954 728	1	M3	RETAINER, Silencer
10	3632 582	1	M3	END, Push Rod
11	152 344	4	M3	NUT, Lock, 3/8 - 16
12	3633 546	1	M3	HOUSING AND TUBE, Booster
	3633 547	1	M3	FASTENER, Housing and Tube, Push On
13	3633 548	1	M3	BOOT, Push Rod
14	3420 128	1	M3	VALVE, Check
15	2823 377	1	M3	GROMMET, Check Valve
16	4089 212	1	M3	CYLINDER, Master, 1978
	4031 345	1	M4-5-6	1978
	4031 345	1	M3-4-5-6	1979-80
17	2944 381	1	M3	CLAMP, Master Cylinder Cover
18	4089 219	1	M3	COVER, Master Cylinder, 1978
	3733 461	1	M4-5-6	1978
	3733 461	1	M3-4-5-6	1979-80
19	4049 658	1	M4-5-6	GASKET AND CLAMP PACKAGE, Master Cylinder, 1978
	4049 658	1	M3-4-5-6	1979-80
20	2881 512	1	M3	GASKET, Master Cylinder Cover
21	4049 657	1	M4-5-6	REPAIR PACKAGE, Master Cylinder, 1978
	4049 657	1	M3-4-5-6	1979-80
	4131 272	1	M3	1978
22	181 112	4	M4-5-6	BOLT, 3/8 - 16 x 1.5
23	6026 648	4	M4-5-6	RETAINER
24	6025 020	4	M4-5-6	NUT, 3/8 - 16

LIGHT DUTY CODES:	A = All Sport Utility (Ramcharger).	B = All Compact Models.	D = Conventional Cab.
	AD = 2 Wheel Drive Only (Ramcharger).	CB-MB = Compact Front Section Only.	W = Conventional Cab 4 Wheel Drive.
	AW = 4 Wheel Drive Only (Ramcharger).	P = Forward Control Chassis.	M = Motor Home.
MEDIUM-HEAVY CODES:	XNT = Low Cab Forward.	D = Conventional Cab.	S = School Bus.
		W = 4-Wheel Drive.	

AR=Use as Required

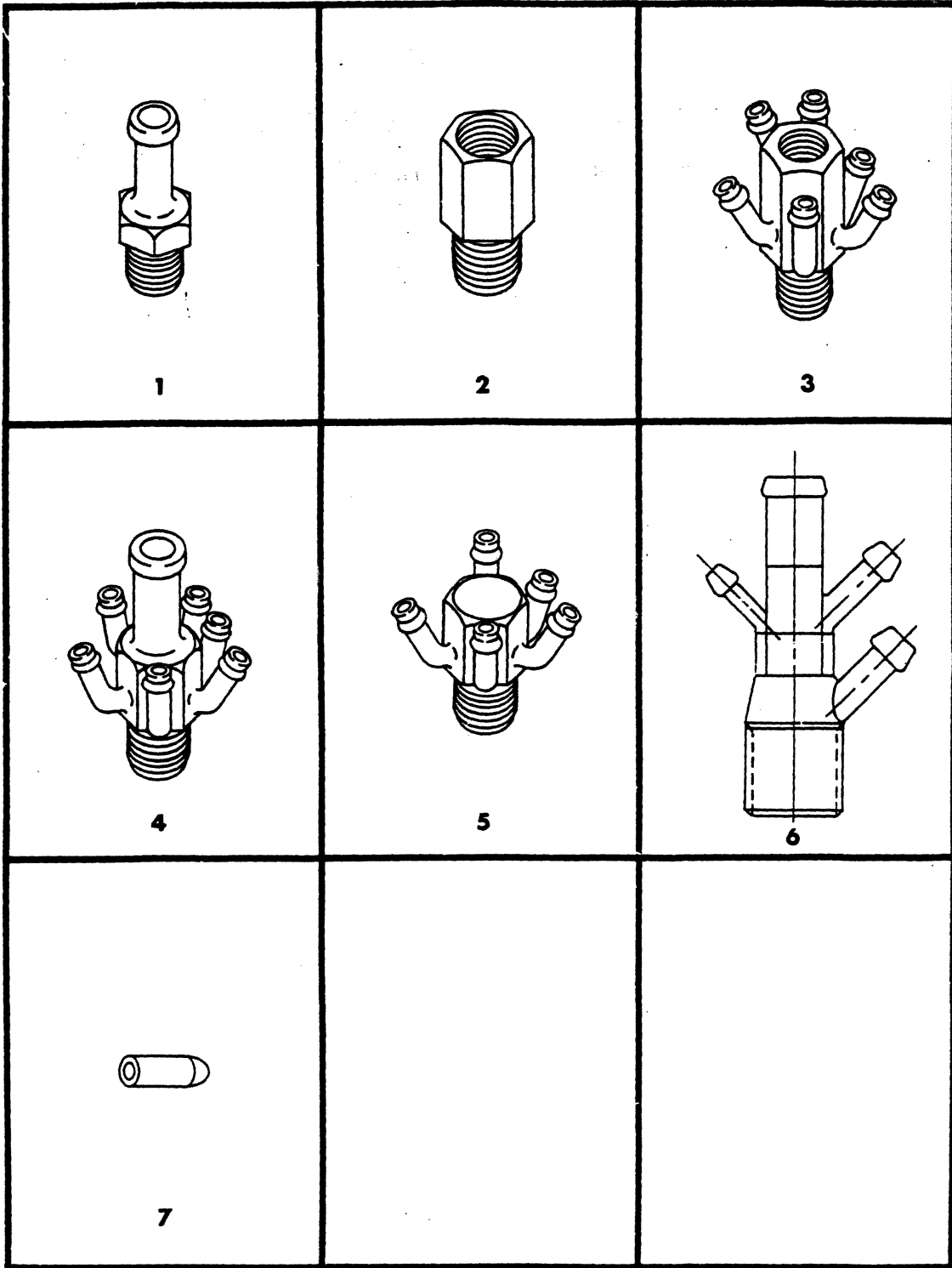
=New Part Number

Printed in U.S.A.

June, 1982

8305 5600B

VACUUM CONNECTORS AND HOSE, BOOSTER



ITEM	PART NUMBER	QTY	MODEL	DESCRIPTION
------	-------------	-----	-------	-------------

VACUUM CONNECTORS AND HOSE, BOOSTER

1	1944 154	1	All	CONNECTOR, Booster Vacuum, Port Top
2	3732 753	1	All	CONNECTOR, Booster Vacuum, Open Top, No Ports
3	3699 038	1	All	CONNECTOR, Booster Vacuum, Open Top, 6 Side Ports
4	4026 117	1	All	CONNECTOR, Booster Vacuum, Port Top, 6 Side Ports
5	4094 872	1	All	CONNECTOR, Booster Vacuum, Closed Top, 5 Side Ports
6	4026 117	1	All	CONNECTOR, Booster Vacuum, Port Top, 3 Side Ports
7	3580 170	1	All	CAP, Booster Vacuum Connector Port, 1/8"
	3580 171	1	All	3/16"
	3580 172	1	All	1/4"

NOTE:--Use Booster Vacuum Hose PN 4026127, 23/32" I.D. or PN 3879277, 11/32" I.D., 50' Roll, with above Connectors.

LIGHT	A = All Sport Utility (Ramcharger).	B = All Compact Models.	D = Conventional Cab.
DUTY	AD = 2 Wheel Drive Only (Ramcharger).	CB-MB = Compact Front Section Only.	W = Conventional Cab 4 Wheel Drive.
CODES:	AW = 4 Wheel Drive Only (Ramcharger).	P = Forward Control Chassis.	M = Motor Home.
MEDIUM-HEAVY CODES:	XNT = Low Cab Forward.	D = Conventional Cab.	S = School Bus. W = 4-Wheel Drive.

AR=Use as Required

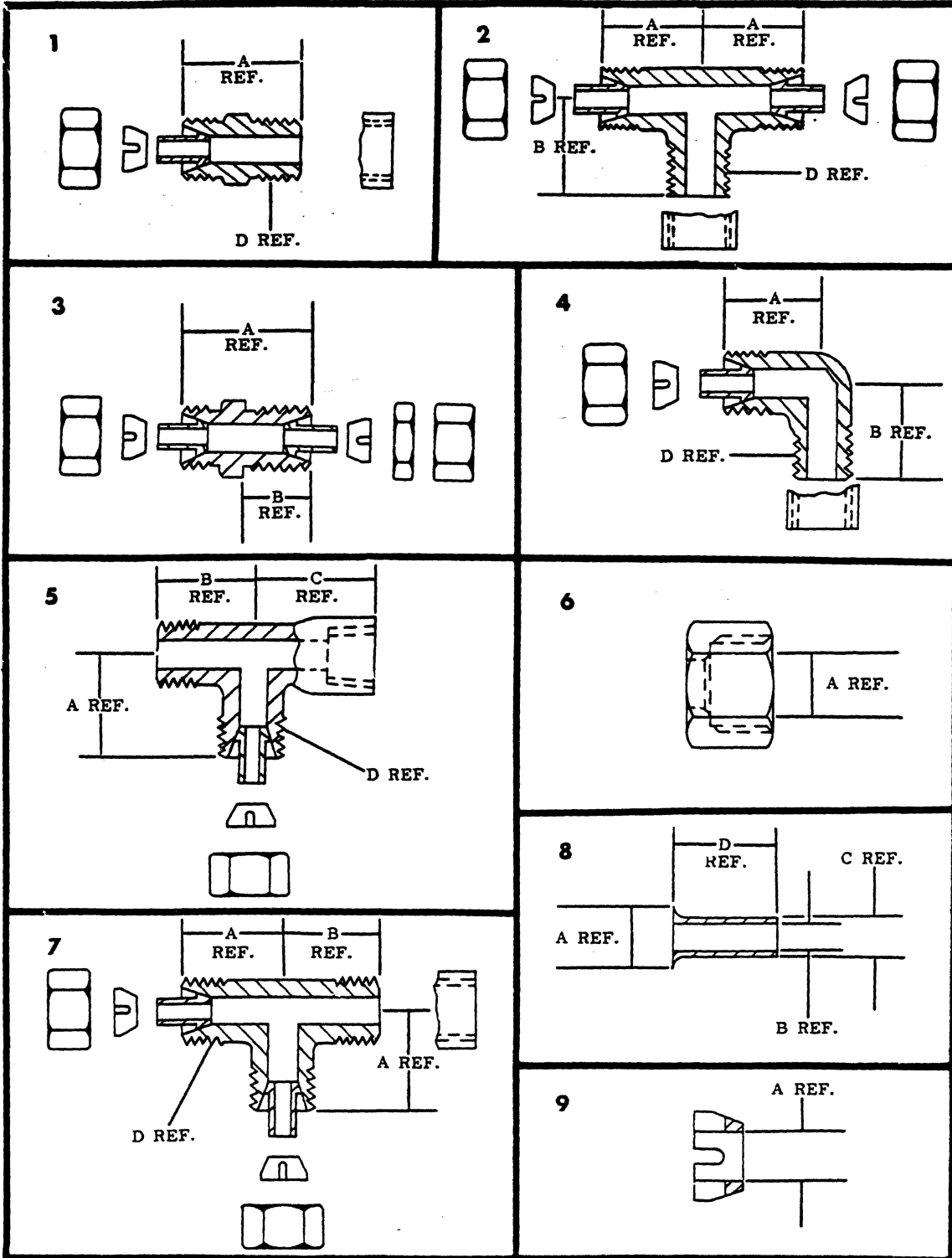
=New Part Number

Printed in U.S.A.

June, 1982

NYLON TUBING CONNECTOR CHART

8305 5650



PART NUMBER	TUBE SIZE	A REF.	B REF.	C REF.	D REF.
-------------	-----------	--------	--------	--------	--------

NYLON TUBING CONNECTOR CHART

1	3638596	.125 AR	.780			1/16
	2910792	.125 AR	.780			1/8
	3894408	.250 AR	.860			1/8
	3894409	.250 AR	1.070			1/4
	3894410	.250 AR	.781			1/8
	3894425	.375 AR	.940			1/8
	3894423	.375 AR	1.140			1/4
	3894424	.375 AR	1.156			3/8
	3894449	.625 AR	1.500			1/2
	3894438	.500 AR	1.280			3/8
	3894439	.500 AR	1.460			1/2
2	4031192	.500 AR	.88	1.000		3/8
3	3894411	.250 AR	1.171	.750		
	3894427	.375 AR	1.343	.750		
	3897804	.500 AR				
	3897805	.625 AR				
4	3638589	.125 AR	.625	.750		1/16
	2910791	.125 AR	.562	.750		1/8
	3894412	.250 AR	.687	.750		1/8
	3894413	.250 AR	.718	.94		1/4
	3894428	.375 AR	.88	1.06		1/4
	3894429	.375 AR	.812	1.00		3/8
	3894430	.375 AR	.875	.921		1/8
	3894452	.625 AR	1.10	1.25		1/2
	3894451	.625 AR	1.10	1.25		3/8
	3894442	.500 AR	.910	1.25		1/2
	3894441	.500 AR	.910	1.03		3/8
5	3894415	.250 AR	.656	.718	.750	1/8
	3894433	.375 AR	.88	.910	.750	1/4
6	2914037	.125 AR	.131			
	2909126	.250 AR	.265			
	2909439	.375 AR	.390			
	3897322	.625 AR	.640			
	4030860	.500 AR				
7	3894414	.250 AR	.687	.750		1/8
	3894432	.375 AR	.781	.968		1/4
8	2909128	.250 AR	.225	.141	.167	.467
	2909409	.375 AR	.343	.213	.245	.547
	3637258	.625 AR	.557	.380	.432	.780
	4030859	.500 AR	.500	.328	.374	.717
9	2914038	.125 AR	.130			
	2909127	.250 AR	.257			
	2909438	.375 AR	.383			
	3897323	.625 AR	.633			
	4030861	.500 AR				

NOTE: Use Nylon Tubing 3780512 - 3/8" I.D., 3897287 - 1/2" I.D., 3897268 - 5/8" I.D., sold in 50' Rolls, with above Connectors.

LIGHT	A = All Sport Utility (Ramcharger).	B = All Compact Models.	D = Conventional Cab.
DUTY	AD = 2 Wheel Drive Only (Ramcharger).	CB-MB = Compact Front Section Only.	W = Conventional Cab 4 Wheel Drive.
CODES:	AW = 4 Wheel Drive Only (Ramcharger).	P = Forward Control Chassis.	M = Motor Home.

MEDIUM-HEAVY CODES: XNT = Low Cab Forward. D = Conventional Cab. S = School Bus. W = 4-Wheel Drive.

AR=Use as Required

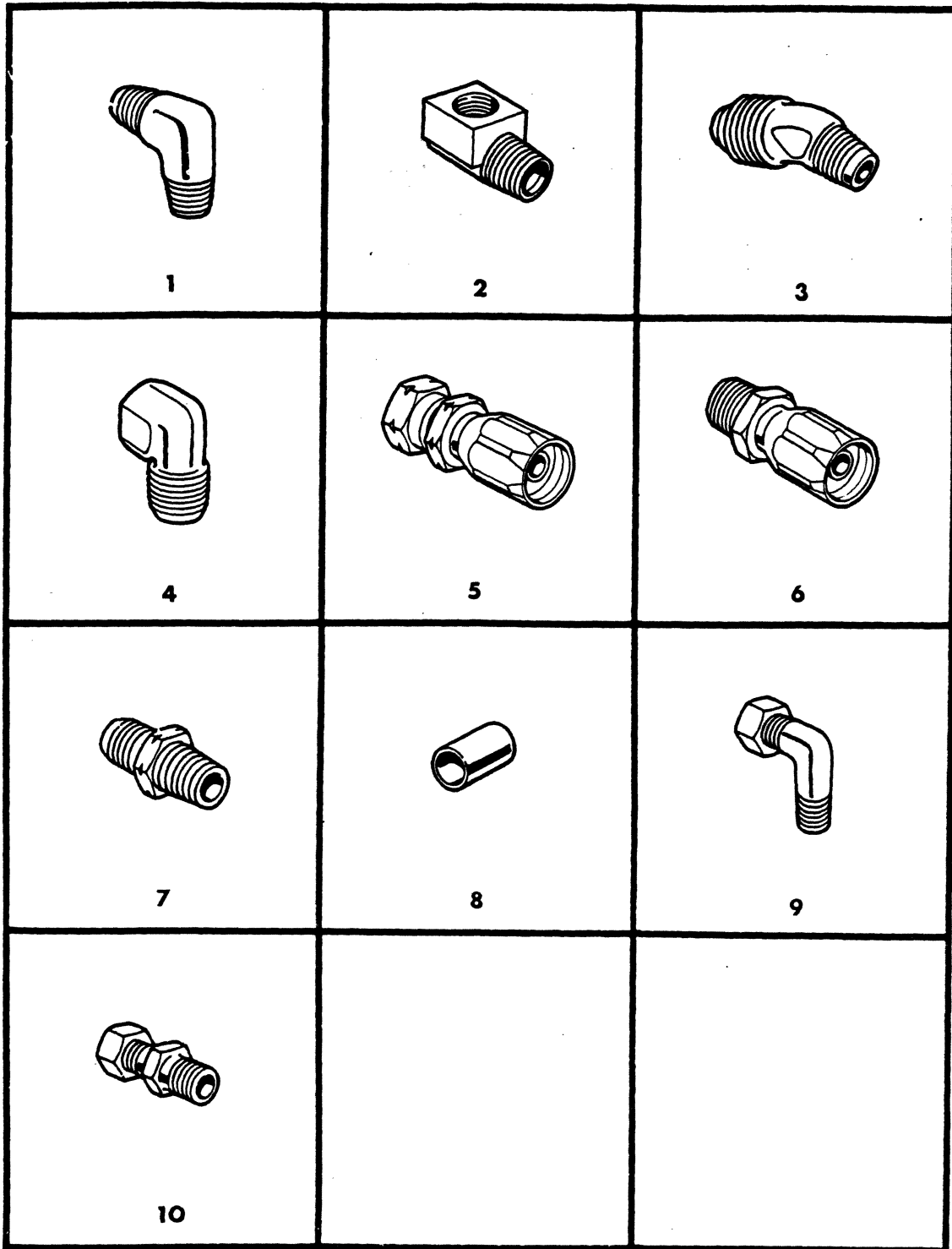
=New Part Number

Printed in U.S.A.

June, 1982

ELBOWS AND CONNECTORS, BRAKE

8305 5700B



ITEM	PART NUMBER	QTY	MODEL	DESCRIPTION
ELBOWS AND CONNECTORS, BRAKE				
1	2508 530	AR		ELBOW, Male Pipe, 3/8-5/8
2	2239 854	AR		ELBOW, 90 Degree, 1/8-1/8
3	2507 531	AR		ELBOW, 45 Degree, 3/8-1/4
4	2237 396	AR		ELBOW, 90 Degree, 1/4
5	3894 463	AR		CONNECTOR, Female Swivel, 5/8
	3894 458	AR		7/16
	2506 027	AR		7/8
6	3894 460	AR		CONNECTOR, Male Swivel, 1/4
7	2514 786	AR		ADAPTER, Male Pipe, 7/16-1/4
8	1394 152	AR		SPACER, Hose, 1/2 O.D., 3/4 Length
9	2907 682	AR		CONNECTOR, 1/4 Tube, 1/8 Thread
	2907 683	AR		1/4 Tube, 1/4 Thread
	2909 407	AR		3/8 Tube, 1/4 Thread
	2955 955	AR		3/8 Tube, 1/8 Thread
10	2909 125	AR		CONNECTOR, 1/4 Tube, 1/4 Thread
	2909 133	AR		1/4 Tube, 1/8 Thread
	2909 410	AR		3/8 Tube, 1/4 Thread
	2959 649	AR		3/8 Tube, 3/8 Thread

LIGHT	A = All Sport Utility (Ramcharger).	B = All Compact Models.	D = Conventional Cab.
DUTY	AD = 2 Wheel Drive Only (Ramcharger).	CB-MB = Compact Front Section Only.	W = Conventional Cab 4 Wheel Drive.
CODES:	AW = 4 Wheel Drive Only (Ramcharger).	P = Forward Control Chassis.	M = Motor Home.
MEDIUM-HEAVY CODES: XNT = Low Cab Forward. D = Conventional Cab. S = School Bus. W = 4-Wheel Drive.			

AR=Use as Required

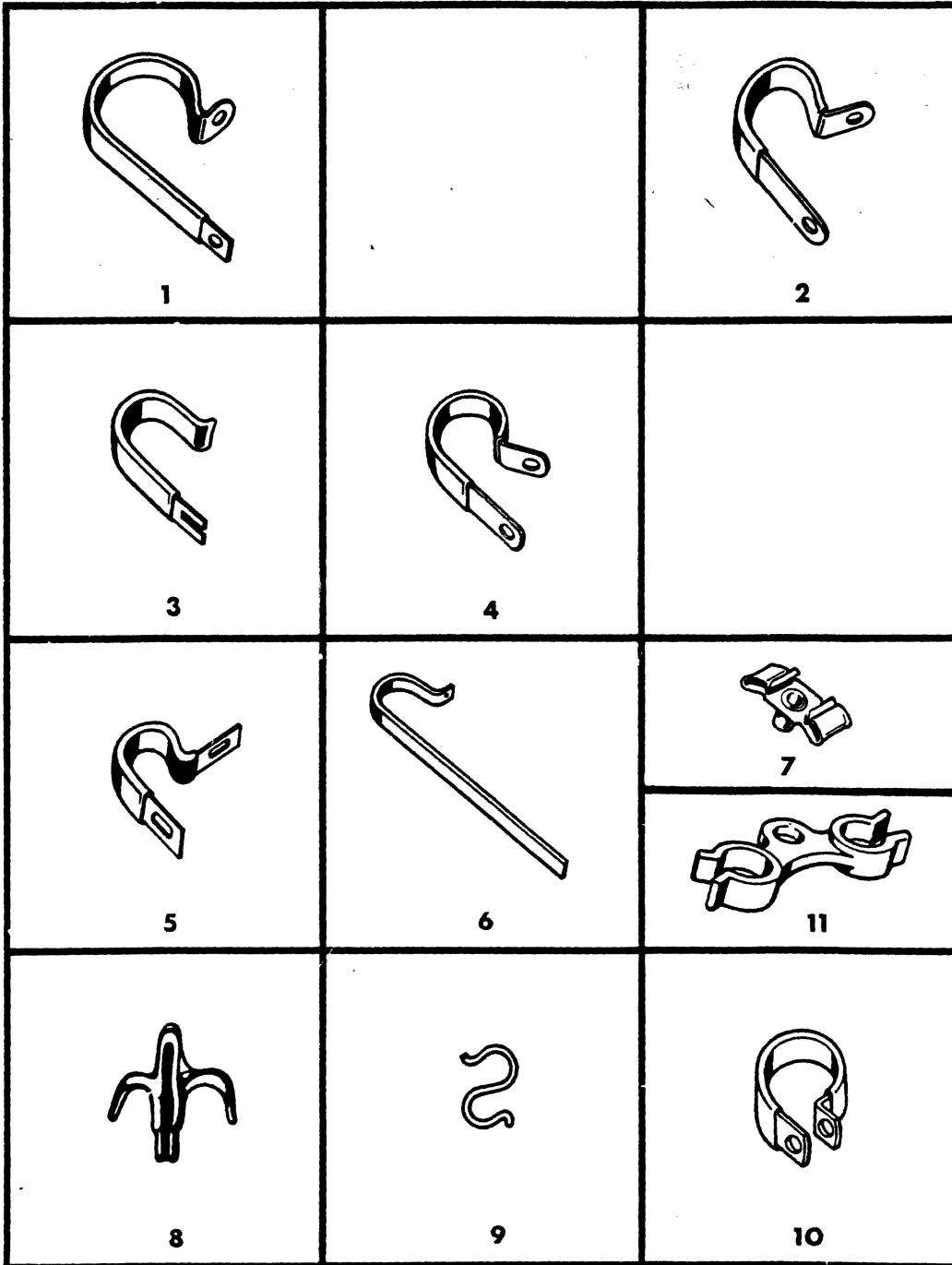
= New Part Number

Printed in U.S.A.

June, 1982

CLIP CHART, BRAKE

8305 6000B



ITEM	PART NUMBER	QTY	MODEL	DESCRIPTION
1	1302 783	AR		CLIP, Brake Tube
2	1163 806	AR		CLIP, Brake Tube
3	1263 079	AR		CLIP, Brake Tube
4	1163 808	AR		CLIP, Brake Tube
5	2954 520	AR		CLIP, Brake Tube
6	581 523	AR		CLIP, Brake Tube
7	3633 586	AR		CLIP, Brake Tube
8	2954 538	AR		CLIP, Brake Tube
9	2465 517	AR		CLIP, Brake Tube
10	1163 801	AR		CLIP, Brake Tube
11	2516 373	AR		SPACER, Air Brake Hose

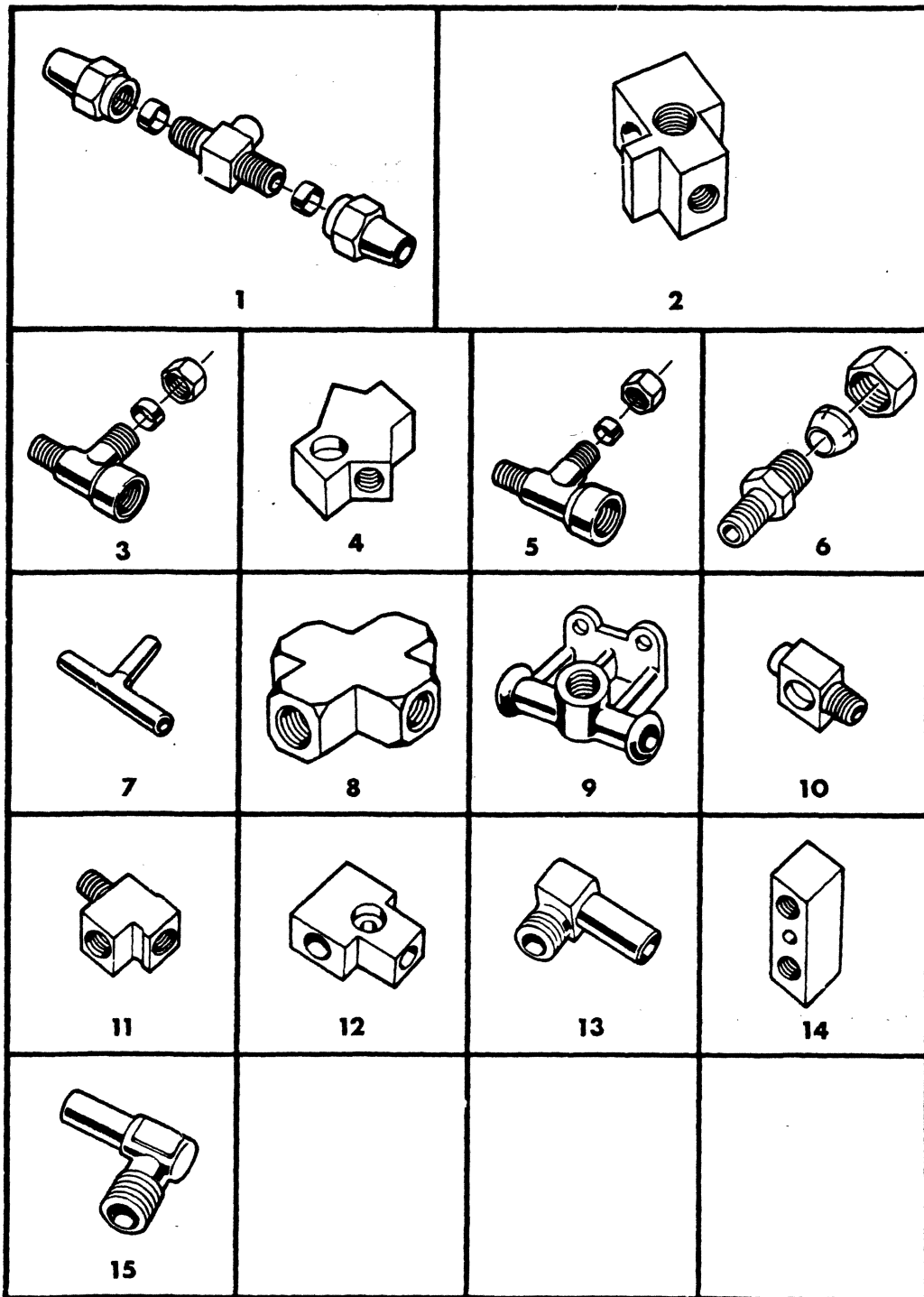
CLIP CHART, BRAKE

LIGHT DUTY CODES:	A = All Sport Utility (Ramcharger).	B = All Compact Models.	D = Conventional Cab.
	AD = 2 Wheel Drive Only (Ramcharger).	CB-MB = Compact Front Section Only.	W = Conventional Cab 4 Wheel Drive.
	AW = 4 Wheel Drive Only (Ramcharger).	P = Forward Control Chassis.	M = Motor Home.
MEDIUM-HEAVY CODES:	XNT = Low Cab Forward.	D = Conventional Cab.	S = School Bus.
		W = 4-Wheel Drive.	

AR=Use as Required # = New Part Number Printed in U.S.A. June, 1982

TEES, ELBOWS, BLOCKS AND CONNECTORS, BRAKE

8305 6200B



ITEM	PART NUMBER	QTY	MODEL	DESCRIPTION
TEES, ELBOWS, BLOCKS AND CONNECTORS, BRAKE				
1	2830 746	AR		TEE, Brake, 5/8-5/8-1/2
2	3638 722	AR		TEE, R/A Brake, 7/16-7/16
3	2959 648	AR		TEE, Brake, 1/8-1/8-1/8
4	1940 621	AR		TEE, R/A Brake, 7/16-3/8-3/8
5	2955 957	AR		TEE, Brake, 1/4-1/4-1/4
6	2955 649	AR		CONNECTOR, 3/8 Pipe
7	2829 743	AR		TEE, Booster Check Valve to Cylinder Hose
8	2235 796	AR		BLOCK, 3/8 Pipe-4 Sides
9	2825 579	AR		TEE, R/A Brake Hose
10	586 805	AR		ELBOW, 3/8 Thread, 1/8 Pipe, 5/8 Pipe
11	1090 447	AR		TEE, 1/8-1/8-7/16 Pipe
12	925 524	AR		TEE, R/A Brake Tube
13	2910 175	AR		ELBOW, Vacuum Supply Tank to Booster
14	2830 647	AR		BLOCK, Junction, 1/4-1/4
15	1923 304	AR		ELBOW, Vacuum Valve to Vacuum Chamber

LIGHT	A = All Sport Utility (Ramcharger).	B = All Compact Models.	D = Conventional Cab.
DUTY	AD = 2 Wheel Drive Only (Ramcharger).	CB-MB = Compact Front Section Only.	W = Conventional Cab 4 Wheel Drive.
CODES:	AW = 4 Wheel Drive Only (Ramcharger).	P = Forward Control Chassis.	M = Motor Home.
MEDIUM-HEAVY CODES: XNT = Low Cab Forward. D = Conventional Cab. S = School Bus. W = 4-Wheel Drive.			
AR=Use as Required		# =New Part Number	Printed in U.S.A.

