

GROUP 4 - BRAKE, PARKING

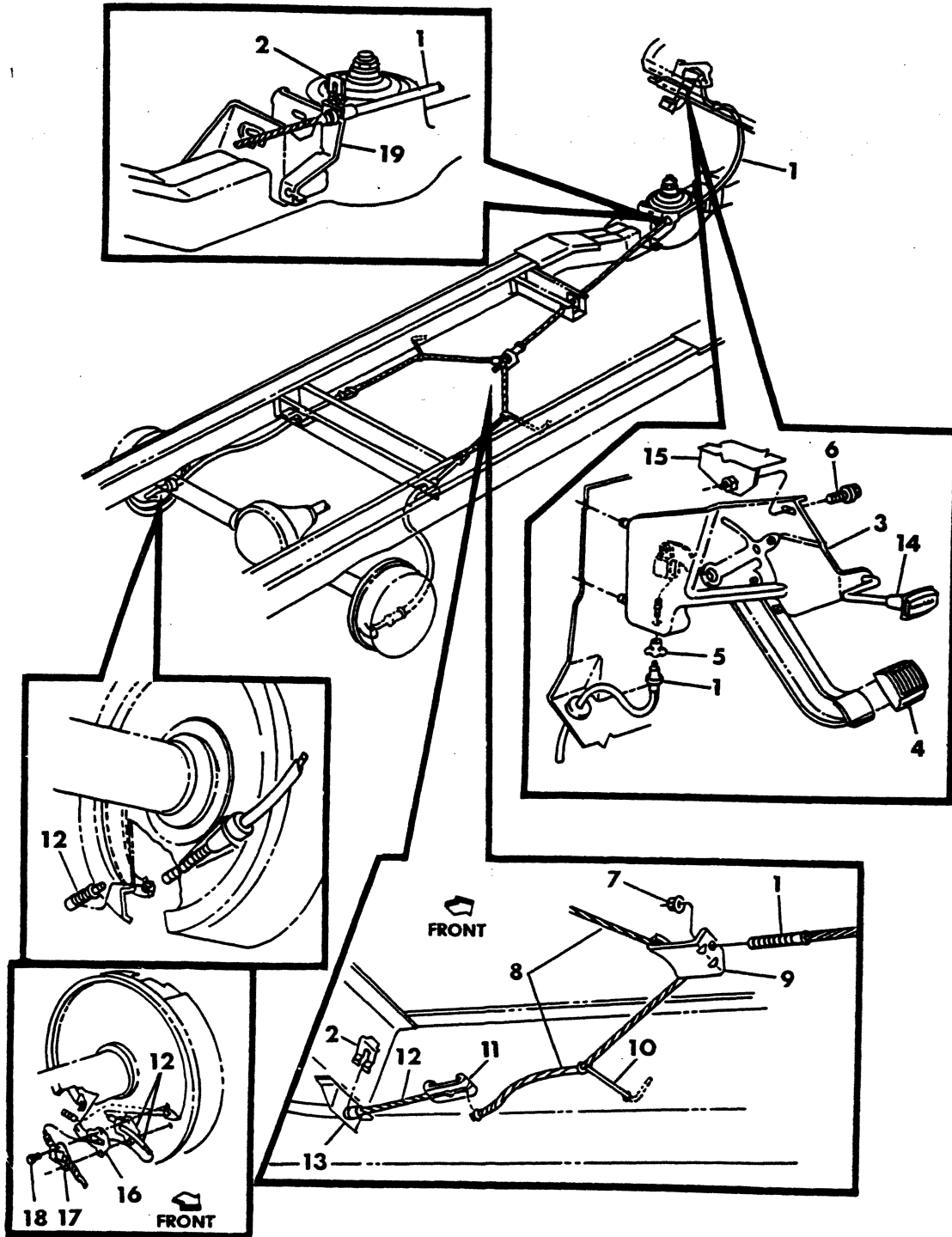
PARKING BRAKE B3-CB-MB3,4 - D-W2,3,4 - RD2	Fig. 4-600
PARKING BRAKE B1,2- D1,2- W1- AD-AW1- MB2	Fig. 4-800
PARKING BRAKE CABLE SYSTEM B1,2 CB-MB4 (W/163" W.B.) - 1978-79	Fig. 4-100
PARKING BRAKE CABLE SYSTEM B1,2-MB2 CB-MB3,4 (w/163" W.B.) - 1980-81	Fig. 4-150
PARKING BRAKE CABLE SYSTEM B300 CB3,4-MB3,4 (EXCEPT 163" W.B.)	Fig. 4-200
PARKING BRAKE SYSTEM AD-AW1	Fig. 4-300
PARKING BRAKE SYSTEM D1,2,3,4-W1,2,3,4-RD2	Fig. 4-400
PARKING BRAKE SYSTEM - REAR WHEEL M300 - M400	Fig. 4-1100
PARKING BRAKE SYSTEM WITH TRANSMISSION BRAKE M500 - M600 - 1978-79	Fig. 4-1000
PARKING BRAKE SYSTEM WITH TRANSMISSION BRAKE M500 - M600 - 1980	Fig. 4-1050
PARKING BRAKE, CB-MB3,4 - w/13 x 3.5 BRAKE	Fig. 4-900
TRANSMISSION PARKING LOCK (A727)	Fig. 4-1900

8304 100A

PARKING BRAKE CABLE SYSTEM

B1,2

CB-MB4 (W/163" W.B.) - 1978-79



ITEM	PART NUMBER	QTY	MODEL	DESCRIPTION
PARKING BRAKE CABLE SYSTEM				
B1,2				
CB-MB4 (W/163" W.B.) - 1978-79				
1	4032 942	1	B1-2	CABLE, Front 109"-127" W.B., 91" Lg.
	4032 942	1	CB-MB4	163" W.B., 91" Lg.
2	2201 467	2		CLIP, Cable Retaining
3	4036 655	1		LEVER ASSY., Parking Brake
4	3497 222	1		PAD, Foot Lever
5	3467 924	1		RETAINER, Cable
6	181 086	1		SCREW, 5/16-18 x .75
7	6030 607	1		NUT, Cable Adjusting, 5/16-18
8	3897 999	1		CABLE, Intermediate, w/109" W.B., 76.96" Lg.
	3898 000	1		w/127" W.B., 112.88" Lg.
	4115 550	1	CB-MB4	w/163" W.B., 178.75" Lg.
9	2961 439	1		EQUALIZER, Cable
10	3633 086	2		GUIDE, Cable
11	2961 441	2		LINK, Cable
12	3467 928	2		CABLE, Rear, w/10 x 2.5 Brakes
	3641 755	2		w/11 x 2.5 Brakes
	2909 795	2	CB-MB4	w/13 x 3.5 Brakes 43.31" Lg. - 1979
13	2961 442	2		BRACKET, Rear
14	4086 497	1		HANDLE, Release Rod
15	4080 993	1		BRACKET, Cowl Panel - 1978
	4087 598	1		1979
16	2952 690	2	CB-MB4	GASKET, Cap, w/163" W.B.
17	2952 689	2	CB-MB4	CAP, w/163" W.B.
18		4	CB-MB4	SCREW, 5/16-18 x 5/8 (Not Serviced)
19	4036 848	1		BRACKET, Front Cable Anchor - 1978
	4086 902	1		1979

LIGHT	A = All Sport Utility (Ramcharger).	B = All Compact Models.	D = Conventional Cab.
DUTY	AD = 2 Wheel Drive Only (Ramcharger).	CB-MB = Compact Front Section Only.	W = Conventional Cab 4 Wheel Drive.
CODES:	AW = 4 Wheel Drive Only (Ramcharger).	P = Forward Control Chassis.	M = Motor Home.

MEDIUM-HEAVY CODES: XNT = Low Cab Forward. D = Conventional Cab. S = School Bus. W = 4-Wheel Drive.

AR=Use as Required

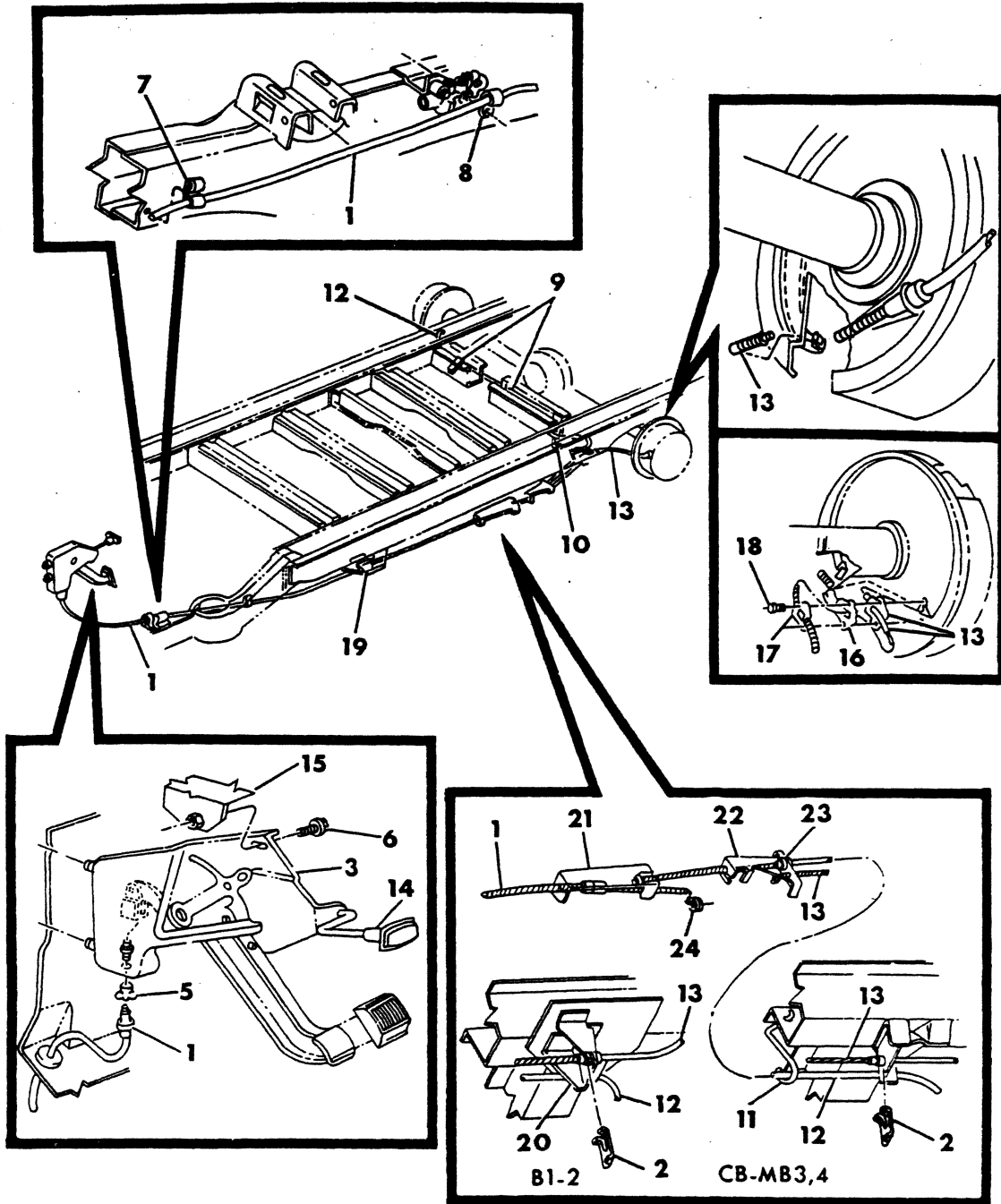
= New Part Number

Printed in U.S.A.

June, 1982

PARKING BRAKE CABLE SYSTEM B1,2-MB2 CB-MB3,4 (w/163" W.B.) - 1980-81

8304 150



ITEM	PART NUMBER	QTY	MODEL	DESCRIPTION
PARKING BRAKE CABLE SYSTEM				
B1,2-MB2				
CB-MB3,4 (w/163" W.B.) - 1980-81				
1				CABLE, Parking Brake, Front
	4213 258	1	B1,2	w/109" W.B., 111.00" Lg., Up To 3-3-1980
	4238 016	1	B1,2-MB2	w/109" W.B., 111.00" Lg., After 3-3-1980
	4116 690	1	B1,2	w/127" W.B., 129.75" Lg., Up To 3-3-1980
	4238 018	1	B1,2-MB2	w/127" W.B., 129.75" Lg., After 3-3-1980
	4116 691	1	CB-MB3,4	w/163" W.B., 167.00" Lg., Up To 3-3-1980
	4238 021	1	CB-MB3,4	w/163" W.B., 167.00" Lg., After 3-3-1980
2	2201 467	1		CLIP, Cable Retaining
3	4036 655	1		LEVER ASSY., Parking Brake
4	3497 222	1		PAD, Foot Lever
5	3467 924	1		RETAINER, Cable
6	181 086	1		SCREW, 5/16-18 x 3/4"
7	3492 980	AR		CLIP, Cable Retaining, Front
8		AR		CLIP, Cable Retaining (Not Serviced)
9	2516 998	2		CLIP, Cable Retaining Rear C/Membr.
10	4116 867	1		GUIDE, Cable, C/Mbr., Wire Type, UP To APPROX. 9-1-1980
	4238 183	1		AFTER APPROX. 9-1-1980
11	4210 918	1	CB-MB3,4	GUIDE, Cable, Side Rail
12	4116 692	1	B1,2-MB2	CABLE, Rear Right, 83.12" Lg.
	4116 694	1	CB-MB3,4	CABLE, Rear Right, 89.00" Lg., w/13 x 3.5 Brks.
13	4116 693	1	B1,2-MB2	CABLE, Rear Left, 43.00" Lg.
	4210 919	1	CB-MB3,4	CABLE, Rear Left, 44.31" Lg., w/13 x 3.5 Brks.
14	4086 497	1		HANDLE, Release Rod
15	4087 598	1		BRACKET, Cowl Panel
16	2952 690	2	CB-MB3,4	GASKET, Cap, w/163" W.B.
17	2952 689	2	CB-MB3,4	CAP, w/163" W.B.
18		4	CB-MB3,4	SCREW, 5/16-18 x 5/8" (Not Serviced)
19	4112 019	1		BRACKET, Front Cable Anchor
20	4112 018	1	B1,2	BRACKET, Rear Cable Anchor
21	3575 604	1		CONNECTOR, Brake Cable Adjusting
22	3575 605	1		CONNECTOR, Rear Cable
23	3467 939	1		RETAINER, Right Rear Cable
24	6030 607	1		NUT, Cable Adjusting, 5/16-18

LIGHT	A = All Sport Utility (Ramcharger).	B = All Compact Models.	D = Conventional Cab.
DUTY	AD = 2 Wheel Drive Only (Ramcharger).	CB-MB = Compact Front Section Only.	W = Conventional Cab 4 Wheel Drive.
CODES:	AW = 4 Wheel Drive Only (Ramcharger).	P = Forward Control Chassis.	M = Motor Home.

MEDIUM-HEAVY CODES: XNT = Low Cab Forward. D = Conventional Cab. S = School Bus. W = 4-Wheel Drive.

AR=Use as Required

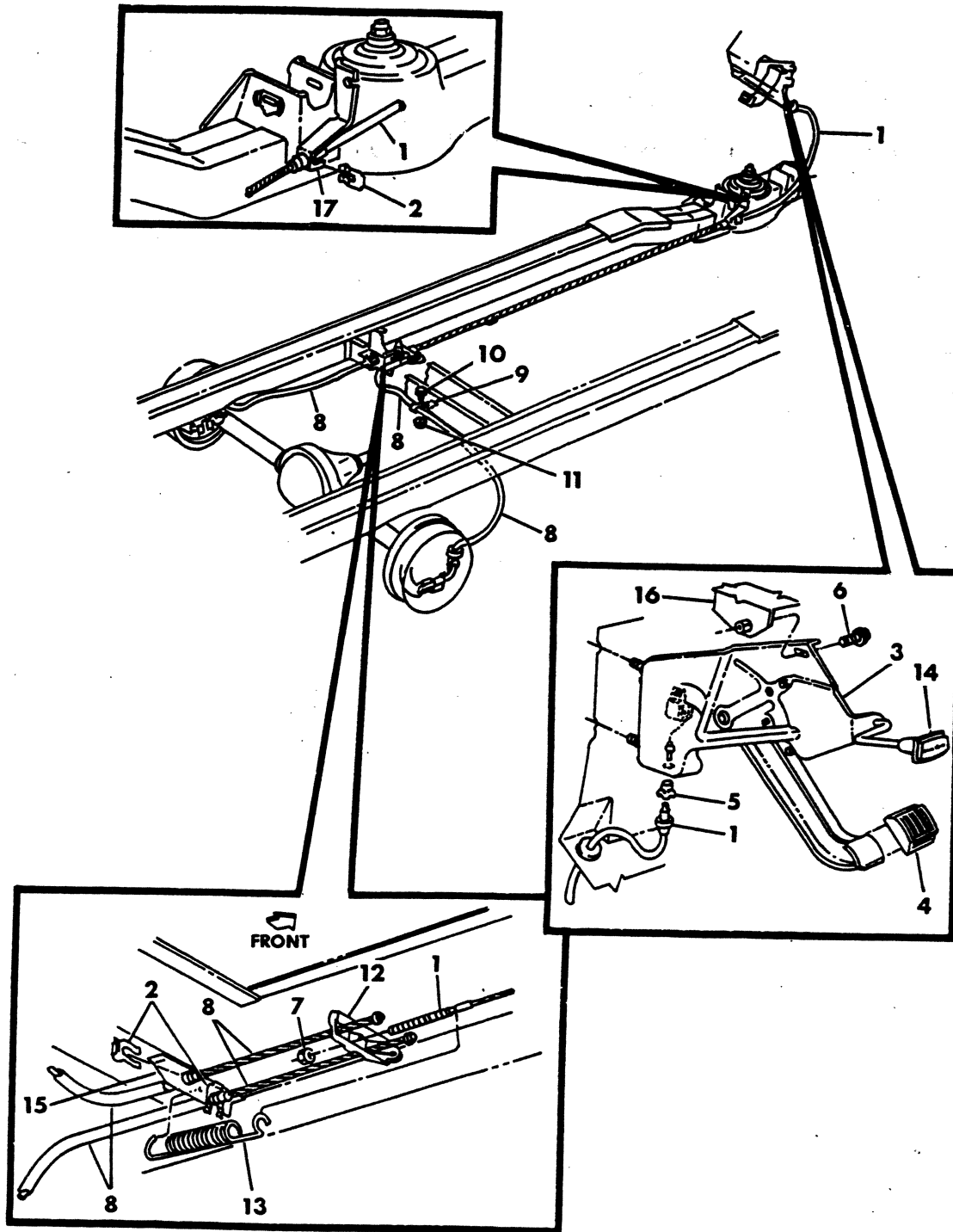
= New Part Number

Printed in U.S.A.

June, 1982

PARKING BRAKE CABLE SYSTEM B300 CB3,4-MB3,4 (EXCEPT 163" W.B.)

8304 200A



ITEM	PART NUMBER	QTY	MODEL	DESCRIPTION
PARKING BRAKE CABLE SYSTEM				
B300				
CB3,4-MB3,4 (EXCEPT 163" W.B.)				
1	4032 943	1	B-CB-MB3	CABLE, Front, w/109" W.B., 119.50" Lg. - 1978-79
	4116 698	1	MB3	w/109" W.B., 117.75" Lg., Up To 3-3-1980
	4238 017	1	MB3	After 3-3-1980
	4032 944	1	B-CB-MB3,4	w/127" W.B., 137.50" Lg. - 1978-79
	4116 699	1	B-CB-MB3,4	w/127" W.B., 135.50" Lg., Up To 3-3-1980
	4238 019	1	B-CB-MB3,4	After 3-3-1980
	4032 945	1	CB3-MB4	w/145" W.B., 155.50" Lg. - 1978-79
	4116 700	1	CB3-MB4	w/145" W.B., 153.50" Lg., Up To 3-3-1980
	4238 020	1	CB3-MB4	After 3-3-1980
2	2201 467	AR	All	CLIP, Cable Retaining
	3492 980	1	All	Cable Retaining, Front - 1980-81
	2516 998	2	All	Cable Retaining, Rear
3	4036 655	1	All	LEVER ASSY., Parking Brake
4	3497 222	1	All	PAD, Foot Lever
5	3467 924	1	All	RETAINER, Cable
6	181 086	1	All	SCREW, 5/16-18 x .75
7	6030 607	1	All	NUT, Cable Adjusting, 5/16-18
8	3491 013	1	B3	CABLE, Rear, Left, Except School Bus, 44" Lg.
	3898 231	1	B3	School Bus, 44" Lg.
	3491 013	1	CB3-MB3,4	Except 163" W.B., 44" Lg.
	3491 012	1	B3	Right, Except School Bus, 78" Lg. - 1978-79
	4210 920	1	B3, CB-MB3,4	127" W.B., 82" Lg. - 1980-81
	3898 232	1	B3	School Bus, 78" Lg. - 1978-79
	4210 922	1	B3	School Bus - 1980-81
	3491 012	1	CB3-MB3,4	Except 163" W.B., 78" Lg.
	4210 918	1	B3	GUIDE, Cable Side Rail, w/Aux. A/C & Htr. (Wire Type)
9	2516 998	1	All	CLIP, Cable
10	181 088	1	All	BOLT, 5/16-18 x 1
11	181 614	1	All	NUT, 5/16-18
12	2401 768	1	All	EQUALIZER, Cable - 1978-79
	4036 907	1	All	1980-81
13	2509 796	1	All	SPRING, Equalizer
14	4086 497	1	All	HANDLE, Release Rod
15	3491 009	1	All	BRACKET, Rear Cable Anchor
	4112 022	1	B3	1980-81
16	4080 993	1	All	BRACKET, Cowl Panel - 1978
	4087 598	1	All	1979-80-81
17	4036 848	1	All	BRACKET, Front Cable Anchor - 1978
	4086 902	1	All	1979
	4112 019	1	All	1980-81

LIGHT	A = All Sport Utility (Ramcharger).	B = All Compact Models.	D = Conventional Cab.
DUTY	AD = 2 Wheel Drive Only (Ramcharger).	CB-MB = Compact Front Section Only.	W = Conventional Cab 4 Wheel Drive.
CODES:	AW = 4 Wheel Drive Only (Ramcharger).	P = Forward Control Chassis.	M = Motor Home.
MEDIUM-HEAVY CODES: XNT = Low Cab Forward. D = Conventional Cab. S = School Bus. W = 4-Wheel Drive.			

AR=Use as Required

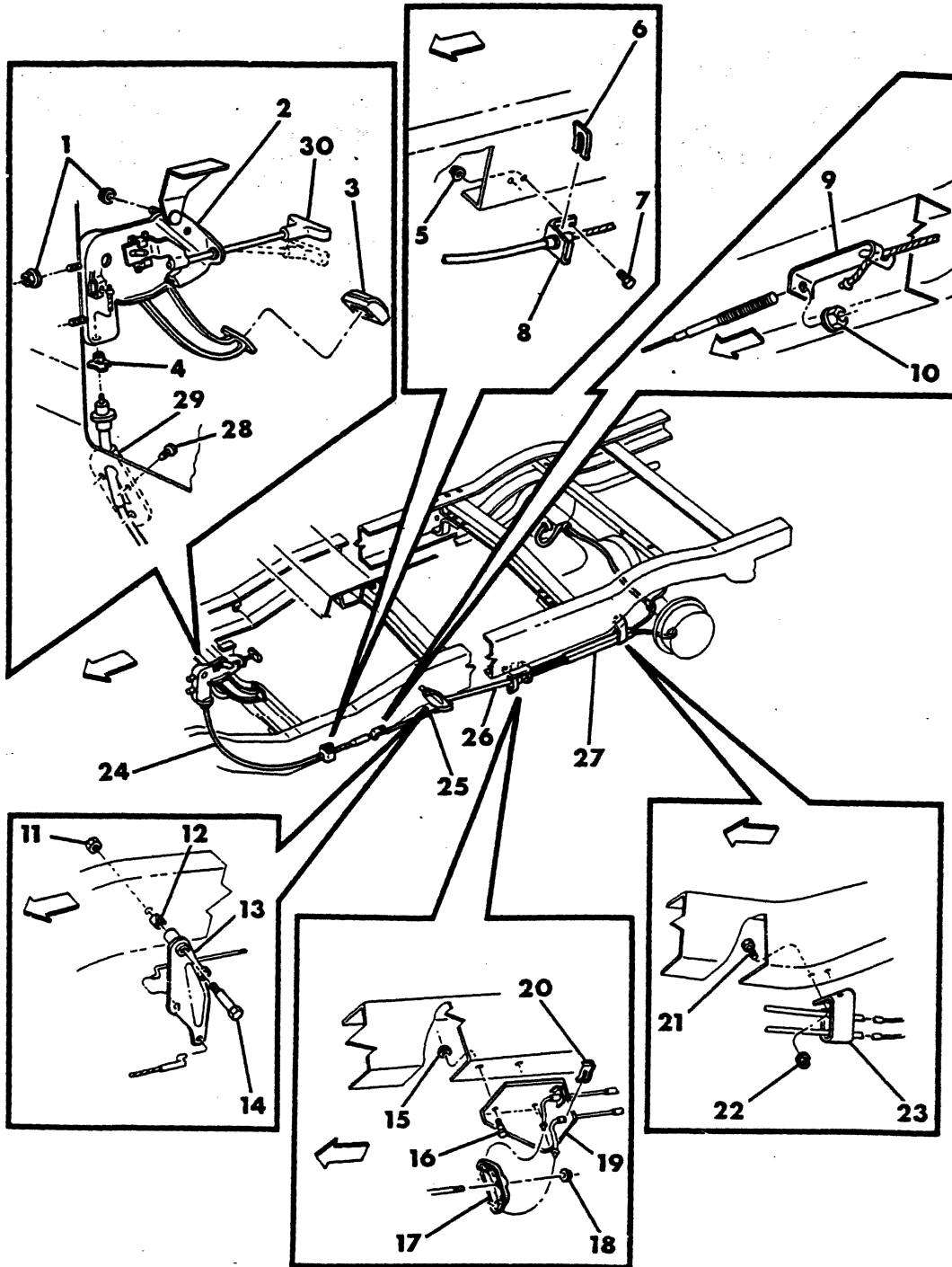
#=New Part Number

Printed in U.S.A.

June, 1982

8304 300

PARKING BRAKE SYSTEM AD-AW1



ITEM	PART NUMBER	QTY	MODEL	DESCRIPTION
PARKING BRAKE SYSTEM AD-AW1				
1	120 376	3		NUT, Lever Mtg., 5/16-18
2	3621 924	1		LEVER ASSY., P/Brake Foot - 1978-79-80
	4213 350	1		1981
	3494 696	1		SUPPORT, Cowl Plenum P/Brake Mtg.
3	3497 222	1		PAD, Foot Lever
4	3467 924	1		RETAINER, Cable
5	6025 020	2		NUT, 3/8-16
6	2201 467	1		CLIP, Cable Retaining
7	181 112	2		BOLT, 3/8-16 x 1"
8	4030 313	1		BRACKET, Front Cable Anchor - 1978-79-80
	4210 905	1		1981
9	3897 472	1		LINK, Cable Adjusting - 1978-79
	3575 604	1		CONNECTOR, Cable Adjusting - 1980-81
10	6030 607	1		NUT, Lock, 5/16-18
11	152 345	1		NUT, Lock, 3/8-24
12	3897 476	2		BUSHING, Ratio Lever
13	4032 780	1		LEVER, Ratio
14	6030 885	1		BOLT
15	6025 020	2		NUT, 3/8-16
16	181 112	2		BOLT, 3/8-16 x 1"
17	4036 907	1		EQUALIZER, Front to Rear Cable
18	6030 607	1		NUT, Adjusting, 5/16-18
19	4089 662	1		BRACKET, Rear Cable
20	2201 467	2		CLIP, Rear Cable
21	181 065	2		BOLT, 1/4-20 x 1"
22	120 375	2		NUT, 1/4-20
23	4031 231	1		BRACKET, Guide, Up to Approx. 11-20-1978
	4116 867	1		GUIDE, Wire Type, After Approx. 11-20-1978
24	3897 391	1		CABLE, Front, 53.50" Lg. - 1978-79.
	4164 329	1		62.70" Lg. - 1980-81
25	4032 779	1		CABLE, Intermediate, 10.65" Lg. - 1978-79
	4210 921	1		8.50" Lg. - 1980
	4032 779	1		10.65" Lg. - 1981
26	4036 492	1		ROD, Adjusting, Rear
27	4238 198	1		CABLE, Rear, Right w/10 x 2.5 Brakes, 81.62" Lg.
	4030 362	1		Rear, Right w/11 x 2.5 Brakes, 81.62" Lg.
	4030 361	1		CABLE, Rear, Left w/10 x 2.5 Brakes, 40.62" Lg.
	4030 363	1		Rear, Left w/11 x 2.5 Brakes, 40.62" Lg.
28	9414 712	3		SCREW
29	2259 118	1		SEAL, Cable to Floor Pan
30	3641 500	1		HANDLE, P/Brake Lever - 1978-79-80
	4213 415	1		1981

LIGHT	A = All Sport Utility (Ramcharger).	B = All Compact Models.	D = Conventional Cab.
DUTY	AD = 2 Wheel Drive Only (Ramcharger).	CB-MB = Compact Front Section Only.	W = Conventional Cab 4 Wheel Drive.
CODES:	AW = 4 Wheel Drive Only (Ramcharger).	P = Forward Control Chassis.	M = Motor Home.

MEDIUM-HEAVY CODES: XNT = Low Cab Forward. D = Conventional Cab. S = School Bus. W = 4-Wheel Drive.

AR=Use as Required

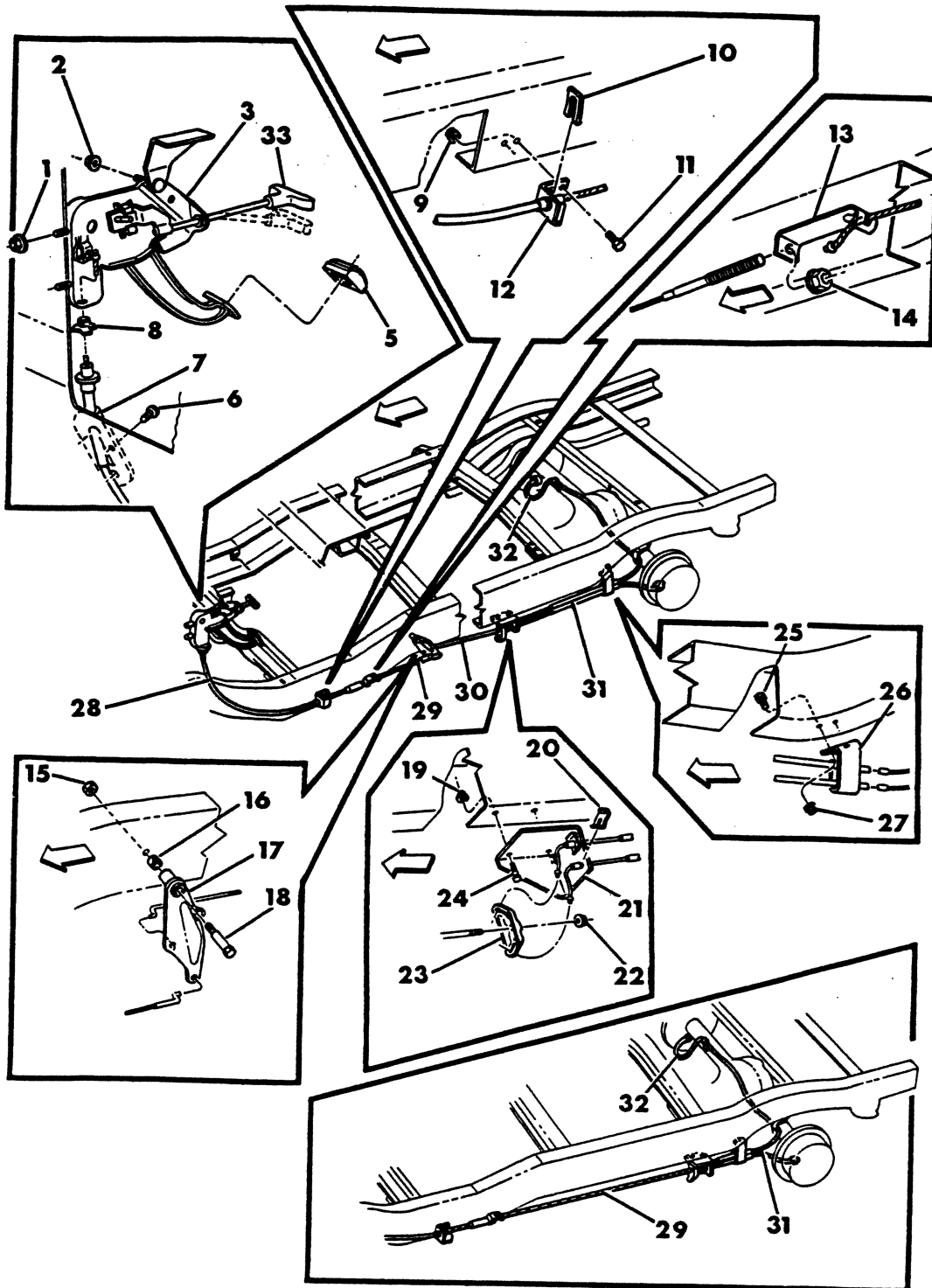
= New Part Number

Printed in U.S.A.

June, 1982

8304 400A

PARKING BRAKE SYSTEM D1,2,3,4-W1,2,3,4-RD2



ITEM	PART NUMBER	QTY	MODEL	DESCRIPTION		
PARKING BRAKE SYSTEM						
D1,2,3,4-W1,2,3,4-RD2						
1	120 376	2	All	NUT, Front Mounting, 5/16-18		
2	120 376	1	All	NUT, Rear Mounting, 5/16-18		
3	3621 924	1	All	LEVER ASSY., Foot - 1978-79-80		
	4213 350	1	All	1981		
	3494 696	1		SUPPORT, Cowl Plenum P/Brake Mtg.		
5	3497 222	1	All	PAD, Foot Lever		
6	9414 712	3	All	SCREW, 8-18 x 1/2"		
7	2259 118	1	All	SEAL, Cable to Floor Pan		
8	3467 924	1	All	RETAINER, Cable		
9	6025 020	2	All	NUT, 3/8-16		
10	2201 467	1	All	CLIP, Cable Retaining		
11	181 112	2	All	BOLT, Bracket, 3/8-16 x 1"		
12	4030 313	1	All	BRACKET, Front Cable Anchor		
13	3897 472	1	All	LINK, Cable Adjusting - 1978-79		
	3575 604	1	All	CONNECTOR, Cable Adjusting - 1980-81		
14	6030 607	1	All	NUT, Adjusting, 5/16-18		
15	152 345	1	All	NUT, Lock, 3/8-24		
16	3897 476	2	All	BUSHING, Ratio Lever		
17	4032 780	1	All	LEVER, Ratio		
18	6030 885	1	All	BOLT		
19	6025 020	2	All	NUT, 3/8-16		
20	2201 467	2	All	CLIP, Cable Retaining		
21	4089 662	1	All	BRACKET, Rear Cable Mounting		
22	6030 607	1	All	NUT, Cable Adjusting, 5/16-18		
23	4036 907	1	All	EQUALIZER, Rear Cable		
24	181 112	2	All	BOLT, 3/8-16 x 1"		
25	181 065	2	All	BOLT, 1/4-20 x 1"		
26	4031 231	1	All	BRACKET, Rear Cable Guide		
27	120 375	2	All	NUT, 1/4-20		
28	3897 391	1	All	CABLE, Front, w/o Frame Reinforcement, 53.50" Lg. - 1978-79		
	4164 326	1	D-W1	67.82" Lg. - 1980-81		
	4112 233	1	D-W2,3,4	w/Frame Reinforcement, 81.00" Lg. - 1978-79		
	4164 323	1	All	87.38" Lg. - 1980-81		
29	4032 775	1	D-W1	CABLE, Intermediate, w/115" W.B., 19.65 Lg. - 1978-79		
	4164 328	1	D,W1	w/115" W.B., 10.00" Lg. - 1980-81		
	4089 488	1	D-W1	w/131" W.B., 35.65 Lg. - 1978-79		
	4164 332	1	D-W1	w/131" W.B., 26.00" Lg. - 1980-81		
	4089 488	1	D2	w/131" W.B., w/12.12 x 2 Brakes, 35.65 Lg. - 1978-79		
	4164 332	1	D2	26.00" Lg. - 1980		
	4036 494	1	All	w/131" W.B., w/o Frame Reinf., 42.88" Lg. - 1978-79		
	4112 234	1	D2,3-W2-RD2	w/131" W.B., w/Frame Reinf., 14.00" Lg. - 1979-80-81		
	4032 777	1	All	w/133" W.B., 37.65 Lg. - 1978-79		
	4164 331	1	D1,2-W1	w/133" W.B., 28.00" Lg. - 1980-81		
	4036 495	1	All	w/135" W.B., w/o Frame Reinf., 46.88" Lg. - 1978-79		
	4112 235	1	D-W3,4	w/135" W.B., w/Frame Reinf., 18.00" Lg. - 1979-80-81		
	4089 489	1	D-W1	w/149" W.B., 53.65 Lg. - 1978-79		
	4164 330	1	D,W1	w/149" W.B., 44.00" Lg. - 1980-81		
	4089 489	1	D2	w/149" W.B., w/12.12 x 2 Brakes, 53.65 Lg.		
	4036 496	1	D2,3-W2	w/149" W.B., w/12 x 2.5 & 3.0 Brakes, w/o Frame Reinf., 60.88" Lg. - 1978-79		
LIGHT	A = All Sport Utility (Ramcharger).		B = All Compact Models.		D = Conventional Cab.	
DUTY	AD = 2 Wheel Drive Only (Ramcharger).		CB-MB = Compact Front Section Only.		W = Conventional Cab 4 Wheel Drive.	
CODES:	AW = 4 Wheel Drive Only (Ramcharger).		P = Forward Control Chassis.		M = Motor Home.	
MEDIUM-HEAVY CODES: XNT = Low Cab Forward. D = Conventional Cab. S = School Bus. W = 4-Wheel Drive.						
AR=Use as Required			# = New Part Number		Printed in U.S.A.	
June, 1982						

1978-81 LIGHT DUTY TRUCK PARTS CATALOG

BRAKE, PARKING

ITEM	PART NUMBER	QTY	MODEL	DESCRIPTION
PARKING BRAKE SYSTEM				
D1,2,3,4-W1,2,3,4-RD2				
	4112 236	1	D2,3-W2-RD2	w/149" W.B., 32.00" Lg., w/Frame Reinf. - 1979-80-81
	4036 497	1	D3,4	w/159" W.B., w/o Frame Reinf., 70.88" Lg. - 1978-79
	4036 494	1	D3,4-W3	w/159" W.B., w/Frame Reinf., 41.88" Lg. - 1979-80-81
	4036 498	1	D2,3	w/165" W.B., 76.88 Lg. - 1978-79
	4164 325	1	D2,3	w/165" W.B., 48.00" Lg. - 1980-81
30	4036 492	1	A-D1,2-W1	ROD, Adjusting
31	4030 361	1	D-W1	CABLE, Rear, Left, w/10 x 2.5 Brakes, 40.62 Lg.
	4030 363	1	D-W1	w/11 x 2.5 Brakes, 40.62 Lg.
	4030 363	1	D2	w/12.12 x 2 Brakes, 40.62 Lg. - 1978-79
	4210 913	1	D2	42.62" Lg. - 1980
	4030 359	1	D-W2	w/12 x 2.5 Brakes, 43.83 Lg.
	4030 289	1	D2,3-RD2	w/12 x 3.0 Brakes, 40.38 Lg.
	4030 359	1	D-W3,4	w/12 x 3.0 Brakes, 43.83 Lg.
32	4238 198	1	D-W1	CABLE, Rear, Right, w/10 x 2.5 Brakes, 81.62 Lg.
	4030 362	1	D-W1	w/11 x 2.5 Brakes, 81.62 Lg.
	4030 290	1	D2	w/12.12 x 2 Brakes, 81.62 Lg. - 1978-79
	4210 912	1	D2	83.62" Lg. - 1980
	4238 196	1	D-W2,3,4-RD2	w/12 x 2.5 & 3.0 Brakes, 88.38 Lg.
33	3641 500	1	All	HANDLE, P/Brake Lever - 1978-79-80
	4213 415	1	All	1981

LIGHT DUTY CODES: A = All Sport Utility (Ramcharger). B = All Compact Models. D = Conventional Cab.
 AD = 2 Wheel Drive Only (Ramcharger). CB-MB = Compact Front Section Only. W = Conventional Cab 4 Wheel Drive.
 AW = 4 Wheel Drive Only (Ramcharger). P = Forward Control Chassis. M = Motor Home.

MEDIUM-HEAVY CODES: XNT = Low Cab Forward. D = Conventional Cab. S = School Bus. W = 4-Wheel Drive.

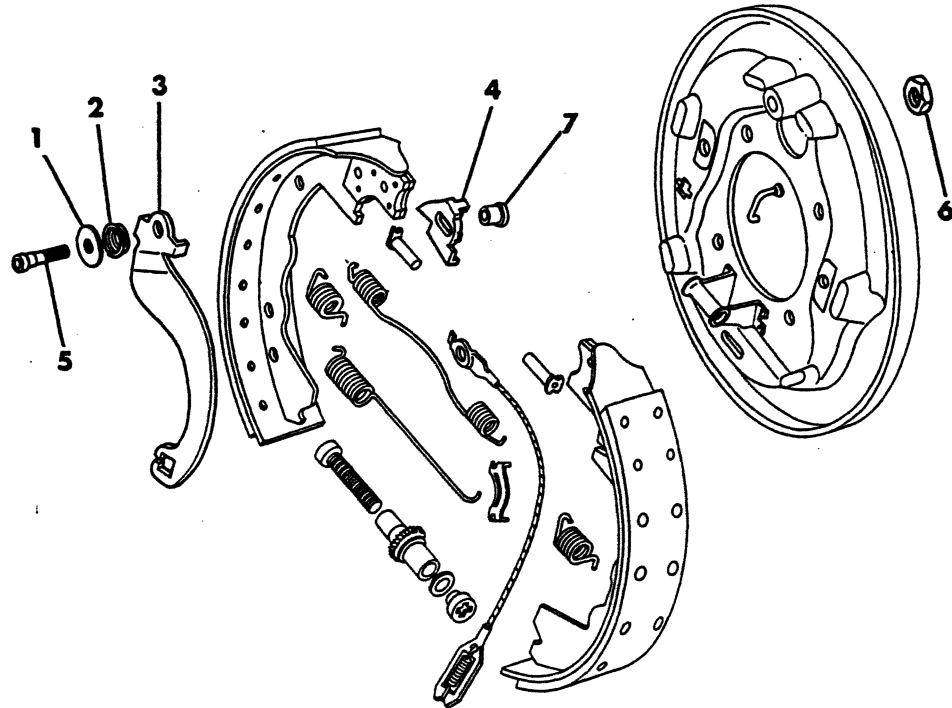
AR=Use as Required

=New Part Number

Printed in U.S.A.

June, 1982

8304 600

PARKING BRAKE
B3-CB-MB3,4 - D-W2,3,4 - RD2

ITEM	PART NUMBER	QTY	MODEL	DESCRIPTION
1	3492 670	2		WASHER, Parking Brake Lever Anti-Rattle Spring
2	3492 656	2		SPRING, Parking Brake Lever Anti-Rattle
3	3492 658-9	1		LEVER, Parking Brake
4	3492 660-1	1		PLATE, Parking Brake Lever Anchor
5	3492 653	2		BOLT, Parking Brake Lever Anchor
6	3492 655	2		NUT, Parking Brake Lever Anchor
7	3492 654	2		BUSHING, Bolt

LIGHT A = All Sport Utility (Ramcharger). B = All Compact Models. D = Conventional Cab.
DUTY AD = 2 Wheel Drive Only (Ramcharger). CB-MB = Compact Front Section Only. W = Conventional Cab 4 Wheel Drive.
CODES: AW = 4 Wheel Drive Only (Ramcharger). P = Forward Control Chassis. M = Motor Home.

MEDIUM-HEAVY CODES: XNT = Low Cab Forward. D = Conventional Cab. S = School Bus. W = 4-Wheel Drive.

AR=Use as Required

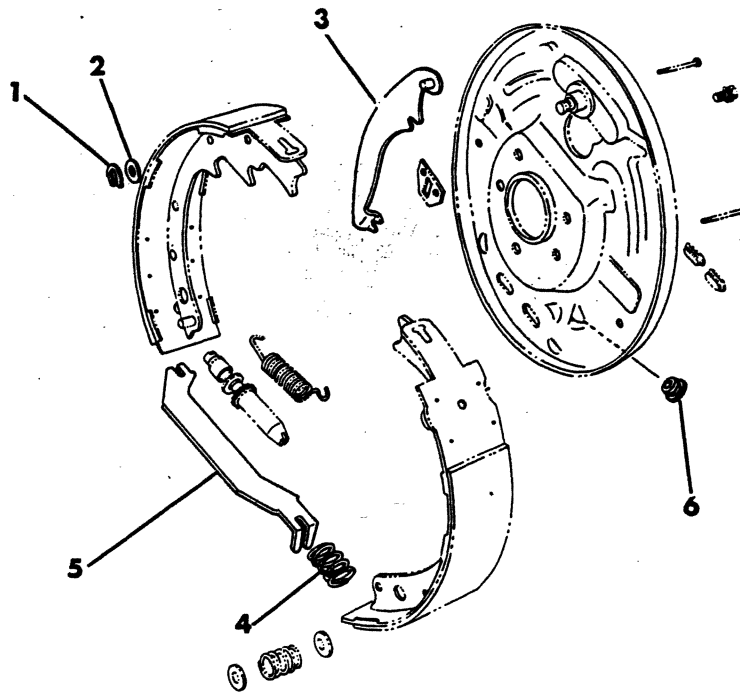
= New Part Number

Printed in U.S.A.

June, 1982

8304 800A

PARKING BRAKE
B1,2- D1,2- W1- AD-AW1- MB2



ITEM	PART NUMBER	QTY	MODEL	DESCRIPTION
1	2072 644	2	All	RETAINER, P/Brake Lever Pin Lock
2	2072 643	2	All	WASHER, P/Brake Lever Pin
3	3880 628-9	1	All	LEVER W/PIN, P/Brake, w/10 x 2.5 Brake
	3880 630-1	1	All	w/11 x 2.5 Brake
	1925 748-9	1	D2	w/12.12 x 2 Brake
4	2533 822	2	All	SPRING, P/Brake Lever Strut, w/10 & 11 x 2.5 Brakes
	1925 732	2	D2	w/12.12 x 2 Rear Brake
5	2409 823	2	All	STRUT, P/Brake Lever, w/10 x 2.5 Brake - 1978-79
	4126 576-7	1	All	1980-81
	3880 756-7	1	All	w/11 x 2.5 Brake
	2910 224-5	1	D2	w/12.12 x 2 Brake
6	3699 549	2		PLUG, P/Brake Cable Hole

LIGHT A = All Sport Utility (Ramcharger). B = All Compact Models. D = Conventional Cab.
DUTY AD = 2 Wheel Drive Only (Ramcharger). CB-MB = Compact Front Section Only. W = Conventional Cab 4 Wheel Drive.
CODES: AW = 4 Wheel Drive Only (Ramcharger). P = Forward Control Chassis. M = Motor Home.

MEDIUM-HEAVY CODES: XNT = Low Cab Forward. D = Conventional Cab. S = School Bus. W = 4-Wheel Drive.

AR=Use as Required

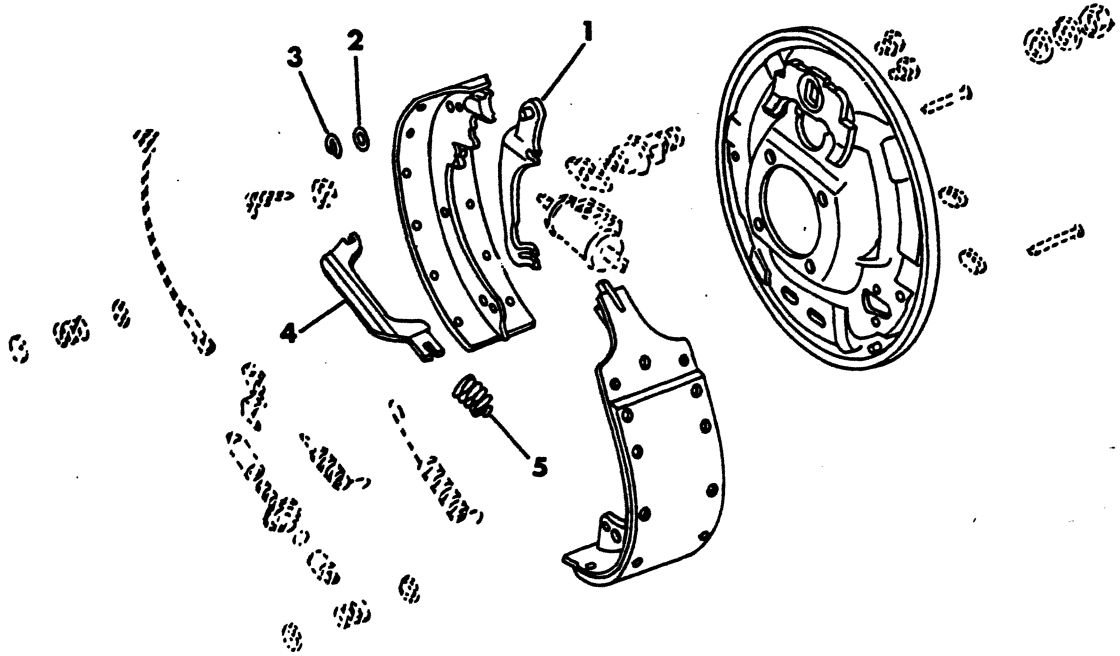
= New Part Number

Printed in U.S.A.

June, 1982

8304 900

PARKING BRAKE, CB-MB3,4 - w/13 x 3.5 BRAKE



ITEM	PART NUMBER	QTY	MODEL	DESCRIPTION
1	4086 506-7	1		LEVER, Parking Brake
2	2072 643	2		SPRING WASHER, Anti-Rattle
3	2072 644	2		RETAINER, Lever Pin
4	4086 508-9	1		STRUT, Parking Brake Lever
5	4086 511	2		SPRING, Shoe to Strut
	4089 242	2		WASHER, Shoe to Strut Spring
	1925 732	2		SPRING, Lever Strut

LIGHT A = All Sport Utility (Ramcharger).

B = All Compact Models.

D = Conventional Cab.

DUTY AD = 2 Wheel Drive Only (Ramcharger).

CB-MB = Compact Front Section Only.

W = Conventional Cab 4 Wheel Drive.

CODES: AW = 4 Wheel Drive Only (Ramcharger).

P = Forward Control Chassis.

M = Motor Home.

MEDIUM-HEAVY CODES: XNT = Low Cab Forward. D = Conventional Cab. S = School Bus. W = 4-Wheel Drive.

AR=Use as Required

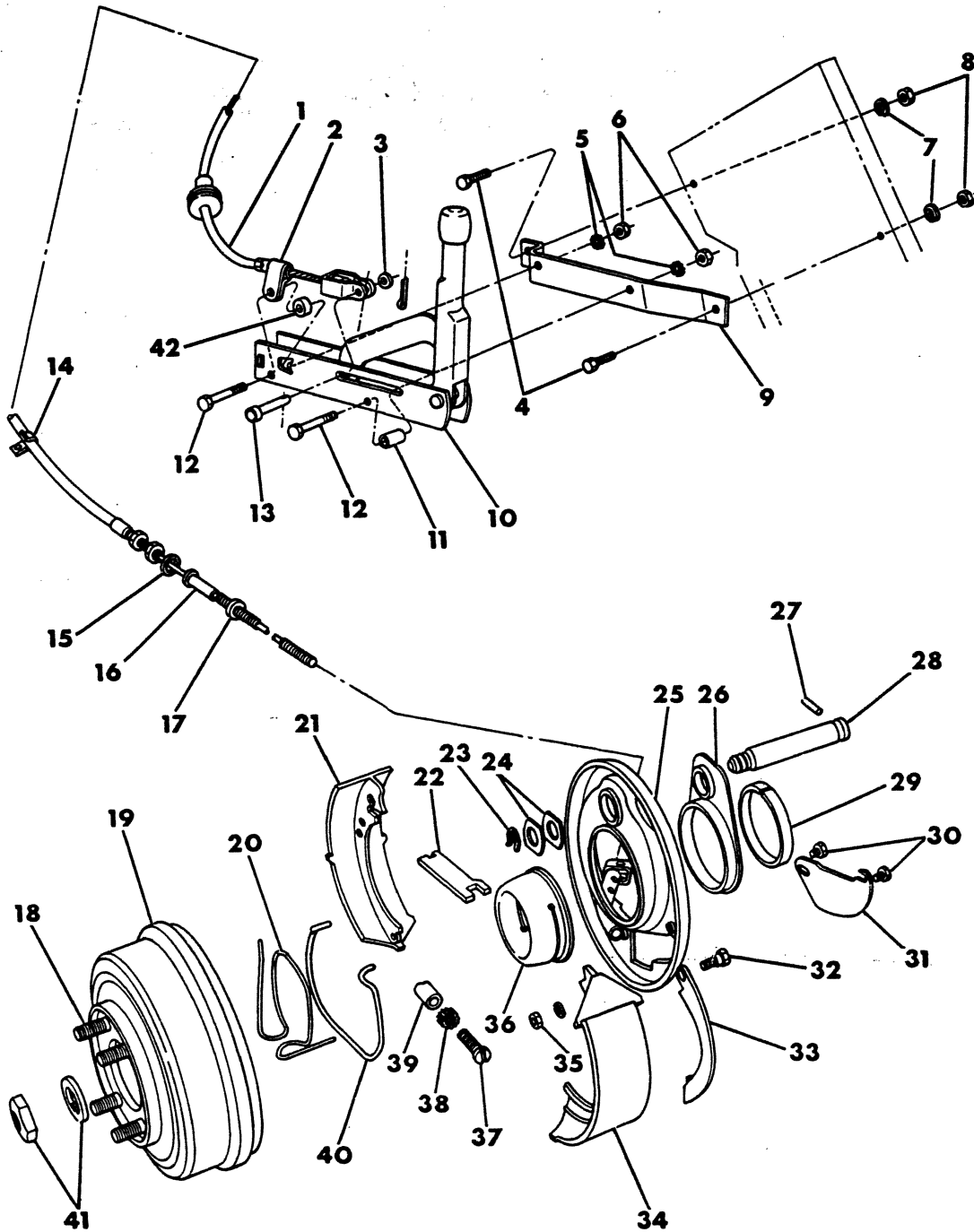
=New Part Number

Printed in U.S.A.

June, 1982

8304 1000

PARKING BRAKE SYSTEM WITH TRANSMISSION BRAKE M500 - M600 - 1978-79



ITEM	PART NUMBER	QTY	MODEL	DESCRIPTION
PARKING BRAKE SYSTEM WITH TRANSMISSION BRAKE M500 - M600 - 1978-79				
1	3637 721	1		CABLE, Parking Brake, 100" Lg. - 1978
	4167 460	1		106" Lg. - 1979
2	1660 563	1		CLIP, Cable To Lever Retaining
	2516 998	1		CLIP, Cable Holding Front
3	120 393	1		WASHER, Plain, 5/16
4	181 112	2		BOLT, 3/8-16 x 1"
5	138 485	2		WASHER, Ext. Tooth Lock, 5/16
6	118 614	2		NUT, 5/16-18
7	131 099	2		WASHER, Lock 3/8
8	118 615	2		NUT, 3/8-16
9	1664 486	1		BRACKET, Lever Mounting
10	4086 381	1		LEVER ASSY., Parking Brake Hand
11	1794 459	1		SPACER, P/Brake Lever
12	181 094	2		BOLT, Lever Spacer, 5/16-18 x 1-3/4"
13	1793 586	1		PIN, Clevis
14	1302 455	1		CLIP, Cable
15	1406 976	1		WASHER, Cable, Outer
16	1406 964	1		BUSHING, P/Brake Cable
17	1406 975	1		WASHER, Cable, Inner
18	1946 283	4		BOLT, P/Brake Drum
19	1949 579	1		DRUM, Parking Brake
20	1530 775	1		SPRING, Shoe Guide
21	2240 637	2		SHOE w/LINING, Parking Brake
22	1406 677	1		LINK, P/Brake Lever
23	600 983	1		WASHER, P/Brake Anchor
24	1403 574	2		GUIDE, P/Brake Anchor
25	1738 221	1		SUPPORT, P/Brake
26	1488 889	1		SPACER, P/Brake Anchor
27	141 160	1		PIN, Anchor Dowel, 3/16 x 1-1/8"
28	1488 884	1		ANCHOR, P/Brake
29	1488 890	1		SLEEVE, P/Brake Spacer
30	181 561	2		SCREW w/WA., Cover, 1/4-28 x 1/2"
31	1317 858	1		COVER, P/Brake Support
32	1929 685	1		BOLT, P/Brake Shoe Lever, Up to 1-15-1979
	6031 715	1		After 1-15-1979
33	2227 695	1		LEVER, P/Brake Shoe, Up to 1-15-1979
	4186 954	1		After 1-15-1979
34	2240 637	1		SHOE w/LINING, Parking Brake
35	6023 027	1		NUT, P/Brake Lever Shoe Bolt, Up to 1-15-1979
		1		After 1-15-1979 (Not Serviced)
36	1488 901	1		SHIELD, Grease
37	1314 478	1		SCREW, Shoe Adjusting
38	1314 477	1		NUT, Shoe Adjusting
39	1314 476	1		SLEEVE, Shoe Adjusting
40	1403 611	1		SPRING, Shoe Return
41	2298 967	1		NUT AND WA. PACKAGE, Transmission Flange
42	1660 564	1		SPACER, Parking Brake Lever
43	2228 345	1		GROMMET, Cable

LIGHT A = All Sport Utility (Ramcharger).

B = All Compact Models.

D = Conventional Cab.

DUTY AD = 2 Wheel Drive Only (Ramcharger).

CB-MB = Compact Front Section Only.

W = Conventional Cab 4 Wheel Drive.

CODES: AW = 4 Wheel Drive Only (Ramcharger).

P = Forward Control Chassis.

M = Motor Home.

MEDIUM-HEAVY CODES: XNT = Low Cab Forward. D = Conventional Cab. S = School Bus. W = 4-Wheel Drive.

AR=Use as Required

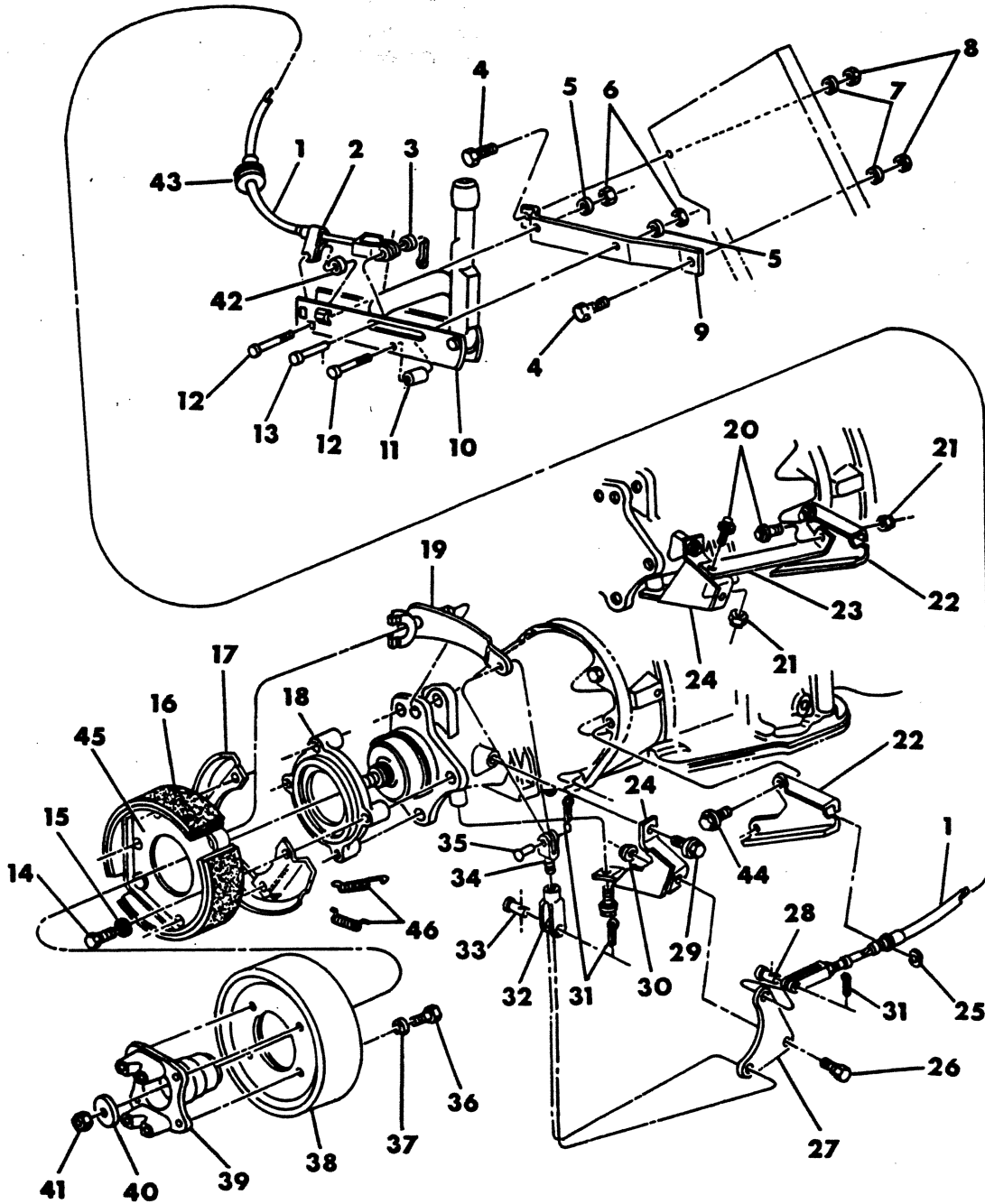
= New Part Number

Printed in U.S.A.

June, 1982

PARKING BRAKE SYSTEM WITH TRANSMISSION BRAKE M500 - M600 - 1980

8304 1050



ITEM	PART NUMBER	QTY	MODEL	DESCRIPTION
PARKING BRAKE SYSTEM WITH TRANSMISSION BRAKE				
M500 - M600 - 1980				
1	4164 234	1	All	CABLE, Parking Brake, 107.33" Lg.
2	1660 563	1	All	CLIP, Cable To Lever Retaining
	2516 998	1	All	CLIP, Cable Holding Front
3	120 393	1	All	WASHER, Plain, 5/16
4	181 112	2	All	BOLT, 3/8-16 x 1"
5	138 485	2	All	WASHER, Ext. Tooth Lock, 5/16
6	118 614	2	All	NUT, 5/16-18
7	131 099	2	All	WASHER, Lock, 3/8
8	118 615	2	All	NUT, 3/8-16
9	1664 486	1	All	BRACKET, Lever Mounting
10	4086 381	1	All	LEVER ASSY., Parking Brake Hand
11	1794 459	1	All	SPACER, Lever
12	181 094	2	All	BOLT, Lever Spacer, 5/16-18 x 1-3/4"
13	1793 586	1	All	PIN, Clevis
14		4	All	SCREW, 1/2-13 x 2-1/2"
15	6023 762	4	All	WASHER, Coned, 1/2"
16	3638 271	1	All	SHOE w/LINING, Parking Brake, Kit
	3638 272	1	All	LINING & RIVET, Kit
17	3736 786	1	All	SHIELD, Dust
18	4130 831	1	All	ADAPTER, Brake w/9" Drum
19	4164 694	1	All	LEVER, Brake Cam Shaft
20	181 065	2	All	BOLT, 1/4-20 x 1"
21	152 360	2	All	NUT, 1/4-20
22	4164 233	1	All	BRACKET, Cable Anchor
23	4210 778	1	All	BRACE
24	4164 232	1	All	BRACKET, Cable Bell Crank
25	1922 183	1	All	RING, Cable Retaining
26	6025 779	1	All	BOLT, 3/8-16 x 1-1/8"
27	3733 109	1	All	BELL CRANK
28	9428 579	1	All	PIN, Bell Crank Cable
29	6024 023	2	All	SCREW, 7/16-14 x 1"
30	6025 020	1	All	NUT, 3/8-16
31			All	COTTER PIN
32	116 536	1	All	CLEVIS, Cam Shaft Lever
33	608 240	1	All	PIN, Clevis
34	2974 007	1	All	ROD, Actuating
35	608 240	1	All	PIN, Actuating Rod
36		4	All	SCREW, 1/2-13 x 7/8"
37	123 174	4	All	WASHER, Lock
38	2975 152	1	All	DRUM, Parking Brake
39	4130 832	1	All	YOKE, Transmission
40	2298 967	1	All	WASHER, (Serv. in Nut & Wa. Pkg.)
41	2298 967	1	All	NUT, 3/4-16 (Serv. in Nut & Wa. Pkg.)
42	1660 564	1	All	SPACER, Lever
43	2228 345	1	All	GROMMET, Cable
44	6027 150	2	All	SCREW, 3/8-16 x 1-1/8"
45	3638 095	1	All	SUPPORT PLATE, Drum Brake Shoe
46	3638 096	2	All	SPRING, Brake Shoe Return Actuating End
	3638 097	1	All	SPRING, Brake Anchor End

LIGHT	A = All Sport Utility (Ramcharger).	B = All Compact Models.	D = Conventional Cab.
DUTY	AD = 2 Wheel Drive Only (Ramcharger).	CB-MB = Compact Front Section Only.	W = Conventional Cab 4 Wheel Drive.
CODES:	AW = 4 Wheel Drive Only (Ramcharger).	P = Forward Control Chassis.	M = Motor Home.

MEDIUM-HEAVY CODES: XNT = Low Cab Forward. D = Conventional Cab. S = School Bus. W = 4-Wheel Drive.

AR = Use as Required

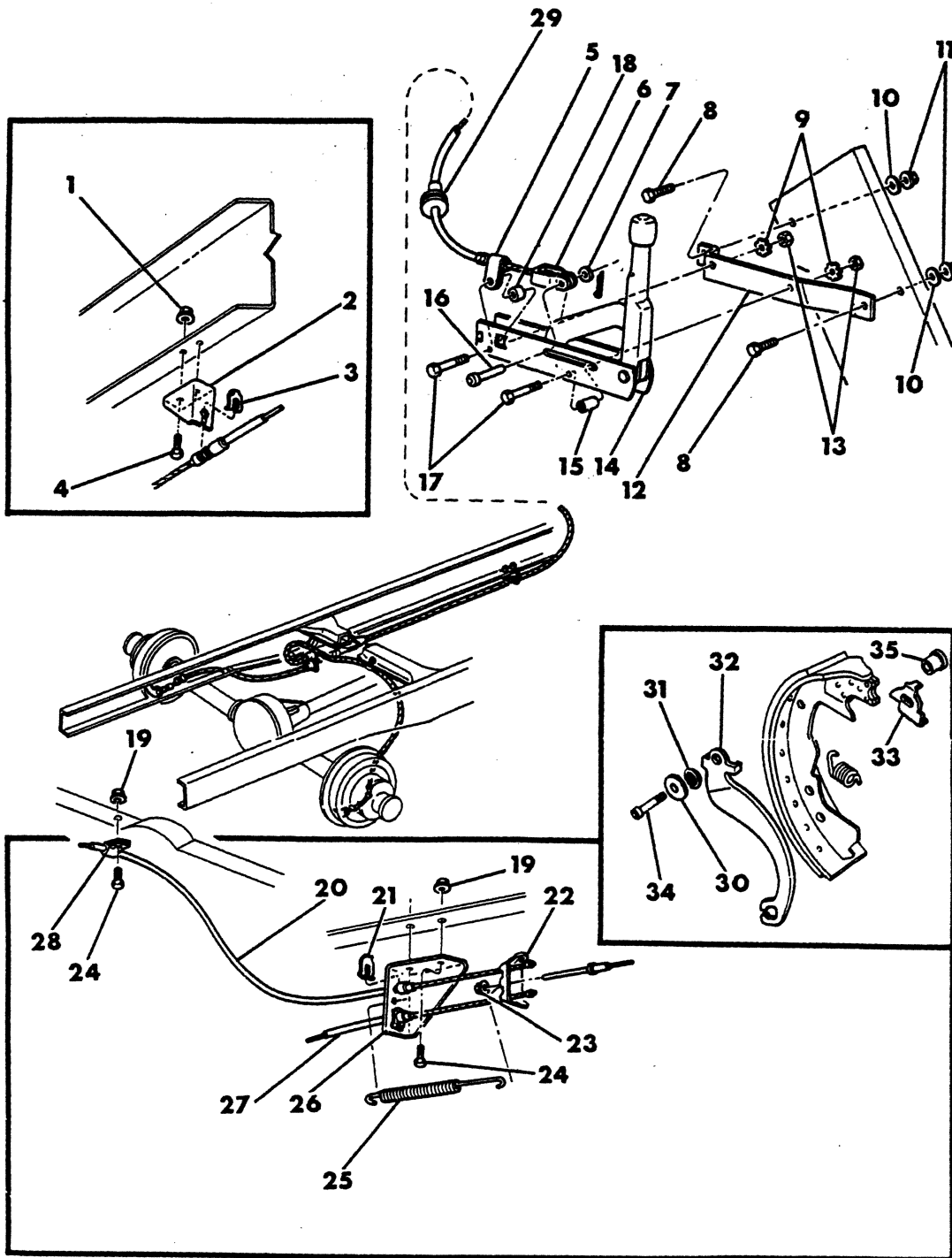
= New Part Number

Printed in U.S.A.

June, 1982

8304 1100A

PARKING BRAKE SYSTEM - REAR WHEEL M300 - M400



ITEM	PART NUMBER	QTY	MODEL	DESCRIPTION
PARKING BRAKE SYSTEM - REAR WHEEL				
M300 - M400				
1	6025 020	2		NUT, 3/8-16
2	2909 793	1		BRACKET, Cable Anchor, Front
3	2201 467	1		CLIP
4	181 112	2		BOLT, 3/8-16 x 1"
5	1660 563	1		CLIP, Lever to Cable
6		1		CABLE, Front
	3004 965	1	M3	w/125" W.B. - 1978
	4131 284	1	M3	w/125" W.B., 173.28" Lg. - 1979
	3004 964	1	M3,4	w/137" W.B., 171.28" Lg. - 1978-79-80
	4131 285	1	M3,4	w/137" W.B., 185.28" Lg. - 1979
	3744 473	1	M4	w/159" W.B., 192.78" Lg. - 1978-79-80
	4131 286	1	M4	w/159" W.B., 206.78" Lg. - 1979
7	120 393	1		WASHER, Plain, 5/16
8	181 112	2		BOLT, 3/8-16 x 1"
9	138 485	2		WASHER, Ext. Tooth Lock, 5/16
10	131 099	2		WASHER, Lock, 3/8
11	118 615	2		NUT, 3/8-16
12	1664 486	1		BRACKET, Lever Mounting
13	118 614	2		NUT, 5/16-18
14	4086 381	1		LEVER, P/Brake Hand
15	1794 459	1		SPACER, Lever
16	1793 586	1		PIN, Clevis
17	181 094	2		BOLT, 5/16-18 x 1-3/4"
18	1660 564	1		SPACER, Lever to Cable Clip
19	6025 020	3		NUT, 3/8-16
20	3491 013	AR	M3,4	CABLE, Rear, Right, 44" Lg.
	3497 997	AR	M3,4	86" Lg.
21	2201 467	2		CLIP, Cable Retaining
22	2401 768	1		EQUALIZER, Cable - 1978-79
	4036 907	1		1980-81
23	6030 607	1		NUT, Cable Adjusting, 5/16-18
24	181 112	3		BOLT, 3/8-16 x 1"
25	2509 796	1		SPRING, Retainer
26	3736 649	1		BRACKET, Rear Anchor
27	3491 013	AR	M3,4	CABLE, Rear, Left, 44" Lg.
	3497 997	AR	M3,4	86" Lg.
28	2516 998	1		CLIP, Cable Retaining
29	2228 345	1		GROMMET
30	3492 670	2		WASHER, P/Brake Lever Pin
31	3492 656	2		SPRING, Anti-Rattle
32	3492 658-9	1		LEVER
33	3492 660-1	1		PLATE, Anchor
34	3492 653	2		BOLT, Lever
35	3492 654	2		BUSHING, Lever Bolt

LIGHT A = All Sport Utility (Ramcharger).

B = All Compact Models.

D = Conventional Cab.

DUTY AD = 2 Wheel Drive Only (Ramcharger).

CB-MB = Compact Front Section Only.

W = Conventional Cab 4 Wheel Drive.

CODES: AW = 4 Wheel Drive Only (Ramcharger).

P = Forward Control Chassis.

M = Motor Home.

MEDIUM-HEAVY CODES: XNT = Low Cab Forward. D = Conventional Cab. S = School Bus. W = 4-Wheel Drive.

AR=Use as Required

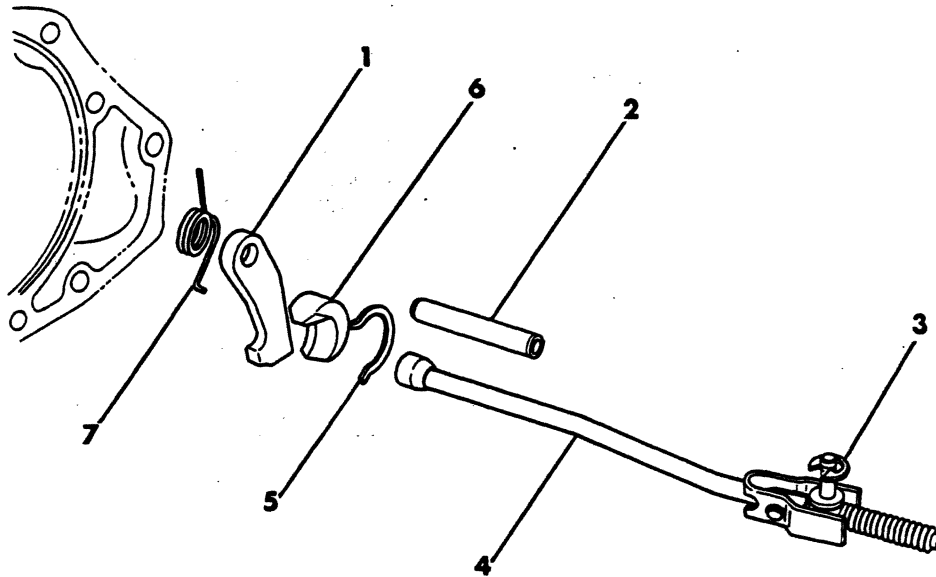
= New Part Number

Printed in U.S.A.

June, 1982

8304 1900

TRANSMISSION PARKING LOCK
 (A727)



ITEM	PART NUMBER	QTY	MODEL	DESCRIPTION
1	2801 157	1		SPRAG, Parking
2	2466 892	1		SHAFT, Parking Sprag
3	1626 749	1		E-RING, Rod Swivel Retainer
4	2466 894	1		ROD, Parking Sprag
5	2538 034	1		SNAP RING, Sprag Reaction Plug
6	2538 042	1		PLUG, W/PIN, Sprag Reaction
	9417 504	1		PIN, Sprag Reaction Plug, 5/32 x 7/16"
7	2466 909	1		SPRING, Parking Sprag

LIGHT A = All Sport Utility (Ramcharger). B = All Compact Models. D = Conventional Cab.
DUTY AD = 2 Wheel Drive Only (Ramcharger). CB-MB = Compact Front Section Only. W = Conventional Cab 4 Wheel Drive.
CODES: AW = 4 Wheel Drive Only (Ramcharger). P = Forward Control Chassis. M = Motor Home.

MEDIUM-HEAVY CODES: XNT = Low Cab Forward. D = Conventional Cab. S = School Bus. W = 4-Wheel Drive.

AR=Use as Required # =New Part Number Printed in U.S.A. June, 1982