

**1970-71**

**PASSENGER CAR**

**ILLUSTRATION SECTION**

***FINAL REVISION***

***DECEMBER 1971***

**LOOSE-LEAF  
PARTS  
CATALOG**



This publication contains parts information for "F" Series (1970) and "G" Series (1971) Vehicles.

In the event replacement parts are required which are not listed, they may be ordered by description or Part Type Code, giving the model and vehicle serial number, and Trim Code (when applicable) of the vehicle.

The use of this Parts Catalog and the arrangement of information herein is explained in the General Information Section.

**INDEX TO INFORMATION PAGES**

- ABBREVIATIONS.....INF - 10
- ALPHABETICAL INDEX.....INF - 3
- AUTOMATIC TRANSMISSION IDENTIFICATION..... INF - 8
- CODE PLATE INTERPRETATION..... INF - 6
- BUILD DATE MO. AND YR. ....INF - 6
- CAR LINE INFORMATION.....INF - 6
- COLOR CODE INFORMATION.....INF - 2
- ENGINE IDENTIFICATION.....INF - 8
- ENGINE IDENTIFICATION NUMBERS.....INF - 9
- HOW TO LOCATE PARTS.....INF - 2
- ILLUSTRATIONS.....INF - 3
- MODEL CHART.....INF - 7
- NUMERICAL INDEX.....INF - 3
- PAGE NUMBERING.....INF - 3
- PARTS CATALOG REVISION SERVICE.....INF - 4
- PARTS PACKAGES.....INF - 3
- PART TYPE CODE SYSTEM.....INF - 2
- PRODUCT BULLETINS.....INF - 4
- PRICE CLASS INFORMATION.....INF - 6
- SPECIFYING INFORMATION.....INF - 4
- STANDARD PARTS.....INF - 3
- SYMBOLS USED IN THIS CATALOG.....INF - 4
- TRANSMISSION IDENTIFICATION.....INF - 8
- TRIM CODE AND BODY PAINT CODES.....INF - 6
- VEHICLE IDENTIFICATION.....INF - 5

PAGES	
INF-1	GENERAL INFORMATION
PK-1	PARTS PACKAGES
PT-1	POLICE - TAXI
1-1	GROUP 1 ACCESSORIES
2-1	GROUP 2 FRONT SUSPENSION
3-1	GROUP 3 AXLE - REAR
4-1	GROUP 4 BRAKE - PARKING
5-1	GROUP 5 BRAKE - SERVICE
6-1	GROUP 6 CLUTCH
7-1	GROUP 7 COOLING
8-1	GROUP 8 ELECTRICAL
9-1	GROUP 9 ENGINE - 6 CYLINDER
9-1	GROUP 9 ENGINE - 8 CYLINDER
10-1	GROUP 10 ENGINE OILING
11-1	GROUP 11 EXHAUST
12-1	GROUP 12 FENDERS & SHEET METAL
13-1	GROUP 13 FRAME
14-1	GROUP 14 FUEL
15-1	GROUP 15 HOOD
16-1	GROUP 16 PROP. SHAFT & UNIV. JT.
17-1	GROUP 17 SPRINGS
18-1	GROUP 18 STANDARD PARTS
19-1	GROUP 19 STEERING - STANDARD
19-1	GROUP 19 STEERING - POWER
21-1	GROUP 21 TRANSMISSION - MANUAL
21-1	GROUP 21 TRANSMISSION - AUTO.
22-1	GROUP 22 WHEELS
23-1	GROUP 23 BODY
1T-1	GROUP 23 INTERIOR TRIM
24-1	GROUP 24 AIR CONDITIONING
AL-1	ALPHABETICAL INDEX
NU-1	NUMERICAL INDEX

## HOW TO LOCATE PARTS

This Parts Catalog is divided into Groups (Part Type Codes) with a tab index to separate the Major Groups.

Page INF - 1 lists the various Group names and numbers. To locate a part by number, refer to the Numerical Index which indicates the Part Type Code in which the number is located. To locate a part by name, refer to the Alphabetical Index which will indicate the Part Type Code a part number for specific nomenclature is listed.

In cases where only the location of the part on the vehicle is known, refer to the Illustrations for that group in which the part is located. The illustration will identify the part and provide Part Type Code information from which the part listing may be located. Parts are listed in Part Type Code sequence within the group, and reference to the proper group will determine the part number.

## PART TYPE CODE SYSTEM

To simplify the listing and location of individual parts, a system of Part Codes is used in this Parts Catalog.

To illustrate, a Type of Part will be indicated as:

2-03-3      KNUCKLE, w/BUSHING

This code is broken down as follows:

- 2-      Indicates the Major Group: "Group 2 -- Front Suspension"
- 03-    Indicates the Sub-Group: "03 -- Steering Knuckle"
- 3      Indicates the Code for the specific name of the part: "Knuckle, w/  
BUSHING"

Part Type Code 2-03-3 will always appear as "KNUCKLE, w/BUSHING."

## COLOR CODED OR MIXED PART NUMBERS

Appearing throughout this catalog are part numbers containing both letters and numbers. For example: 6700FX9. These are good serviceable part numbers. The combination of letters and numbers merely indicates the parts are keyed to the interior color of the vehicles on which they are used.

## INTERIOR TRIM

Refer to the trim section of the catalog for information relative to this section.

## PAGE NUMBERING

Two-part page numbers are used throughout this catalog. The first part of the page designation indicates the major group or section. The second part indicates the actual page number in the group. For example:

1-1 indicates Group 1, Accessories, Page 1

2-1 indicates Group 2, Front Suspension, Page 1

In the maintenance of the Loose Leaf Parts Catalog Revision Service, it may become necessary to add information beyond the capacity of the page. In this event, an "A" page will be used. For example: If it becomes necessary, because of change, to add several part numbers to page 2-1 and space does not permit the addition, you will be given Page 2-1A. Page 2-1A should be filed immediately following page 2-1.

## ILLUSTRATIONS

Refer to illustration index or also special illustration index in Group 8 and Group 23 for page reference for specific illustrations.

## ALPHABETICAL INDEX

To locate a part by name, refer to the Alphabetical Index. This index indicates the Part Type Code in which various parts may be located.

## NUMERICAL INDEX

Reference to any part by part number is provided in the Numerical Index. This index indicates the Part Type Code in which the number is listed.

## PARTS PACKAGES

Service Parts Packages, containing all parts needed for a specific service operation, are listed in their respective groups with related parts. The listing will show adaptability and model application. The PARTS PACKAGE Section of the catalog contains a secondary listing of most major packages and respective contents of each. The listing sequence is numerical within Part Type Code.

## STANDARD PARTS

Standard Parts such as bolts, nuts, etc., are listed under the major parts which they attach and are not coded. Standard Parts listed as Major Parts, such as fuses, bulbs, and bearings in the 100,000-499,999 part number series are assigned a Part Type Code and coded within the group in which they are listed.

A comprehensive listing and description of the most commonly used Standard Parts will be found under Group 18.

## SPECIFYING INFORMATION

The following information is included in this Parts Catalog:

- |  |   |
|--|---|
| <ol style="list-style-type: none"> <li>1. Part Type Code</li> <li>2. Part Name</li> <li>3. Part Number</li> <li>4. Model Applications</li> <li>5. Quantity used per vehicle</li> <li>6. Effective points of series running changes by vehicle serial number, engine number and body number where applicable.</li> <li>7. Description and dimensions necessary for proper identification of parts where necessary.</li> </ol> | <ol style="list-style-type: none"> <li>8. Parts not previously listed in the Parts Catalog are designated by a (#) symbol preceding the part number.</li> <li>9. No. of Cyl. column<br/>6 indicates 6 cylinder models<br/>8 indicates 8 cylinder models<br/>Blank indicates dual usage</li> <li>10. Parts designated as "CANADA" are applicable to Canadian vehicles only. They are not available in U.S.A.</li> <li>11. 70 or 71 in the description field indicates the year applicable for the part. BLANK INDICATES DUAL USAGE.</li> </ol> |
|--|---|

## SYMBOLS USED IN THIS PARTS CATALOG

The following symbols are used in the Parts Catalog and revisions thereto:

- \* - An asterisk preceding a part number indicates a change or addition.
- # - Preceding a part number indicates parts which have been added and not previously published.
- AR - In the "Model Code" column means "use as required".

## PRODUCT BULLETINS

PRODUCT BULLETINS are issued when important changes are made in production or when corrections are to be made in the Parts Catalog between regular revisions.

Use of the PRODUCT BULLETIN assures each catalog subscriber up to date information. All catalogs should be noted and changed accordingly to remain current between revisions.

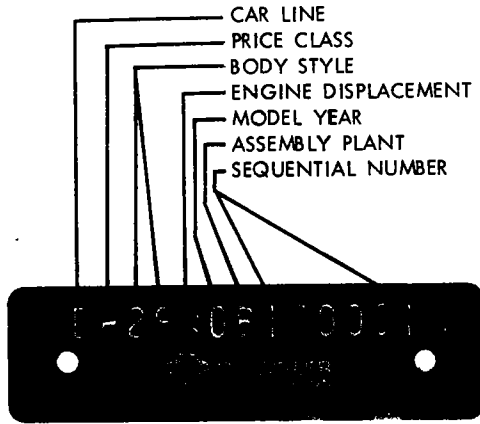
## PARTS CATALOG REVISION SERVICE

Subscribers to the Passenger Car Parts Catalog Revision Service will be periodically provided with revision copy incorporating latest information. Revision may be provided by Group or complete book copy.

Proper interfiling of the revision copy will insure the subscriber a complete up-to-date Parts Catalog.

Accompanying each mailing of a set of revision copy is a covering letter which outlines the contents of the particular revision. It is recommended that the letter be read carefully to avoid elimination of copy which is still current.

VEHICLE IDENTIFICATION PLATE



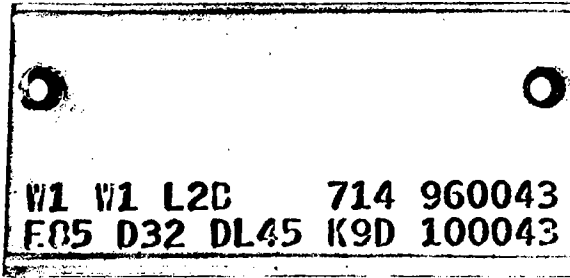
All assembly plants use a uniform method for assigning vehicle serial numbers. This number consists of 13 digits and is shown on the Vehicle Identification Plate which is located on the instrument panel - visible thru the windshield. (Always specify the vehicle serial number when ordering parts by description). A listing and description of serial numbers follows:

VEHICLE IDENTIFICATION PLATE INTERPRETATION

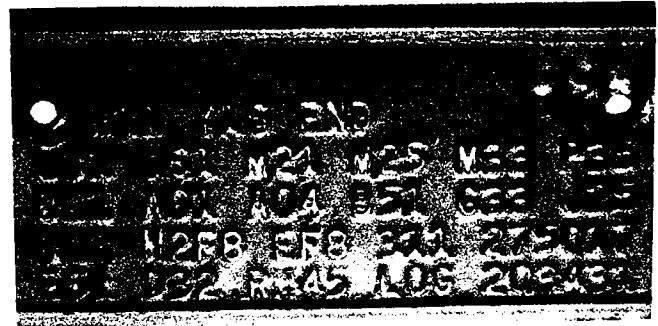
A diagram showing a 13-digit vehicle identification plate with lines connecting each digit position to the corresponding column in the table below. The labels are: 1st Digit, 2nd Digit, 3rd & 4th Digits, 5th Digit, 6th Digit, 7th Digit, and 8th - 13th Digits.

CAR LINE	PRICE CLASS	BODY TYPE	ENG. DISPLACE.	MODEL YEAR	ASSEMBLY PLANT	SEQUENCE NUMBER
V - Valiant	E - Economy	21 - 2 Dr. Sed.	B - 198 Cu. In.	0 - 1970	A - Lynch Rd.	100001
L - Dart	H - High	23 - 2 Dr. H/Top	C - 225 Cu. In.	1 - 1971	B - Hamtramck	100001
B - Baracuda	K - Police	27 - Conv. Cpe.	E - Spl. 6 Cyl.		C - Jefferson	100001
J - Challenger	L - Low	29 - 2 Dr. Sports H/Top	G - 318 Cu. In.		D - Belvedere	100001
R - Belvedere Satellite	M - Medium	41 - 4 Dr. Sed.	H - 340 Cu. In.		E - Los Angeles	100001
W - Coronet Charger	P - Premium	43 - 4 Dr. H/Top	J - 340 Cu. In. 6 Bbl.		F - Newark	100001
P - Fury	S - Special	45 - 6 Pass. Wagon	K - 360 Cu. In.		G - St. Louis	100001
D - Dodge	T - Taxi	46 - 9 Pass. Wagon	L - 383 Cu. In.		R - Windsor	100001
C - Chrysler	X - Fast Top		N - 383 Hi. Perf.			
X - Charger			R - 426 Cu. In.			
Y - Imperial			T - 440 Cu. In.			
			U - 440 Hi. Perf.			
			V - 440-6 Bbl. 8 Cyl.			
			Z - Spl. 8 Cyl.			

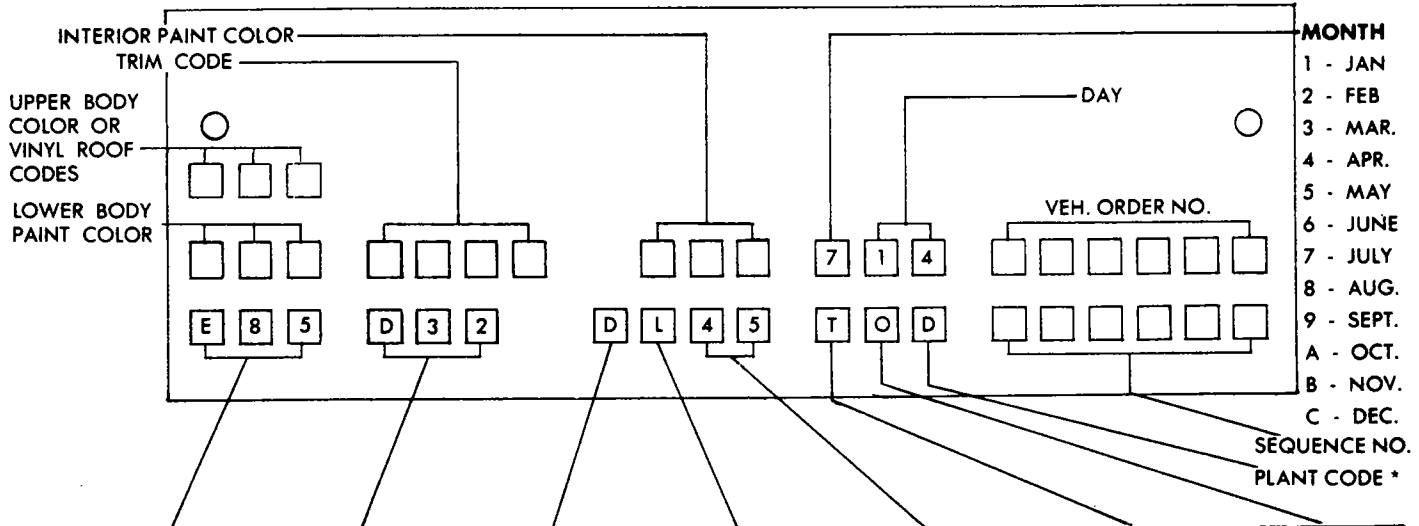
- SAMPLE BODY CODE PLATE 1970 -



- SAMPLE BODY CODE PLATE 1971 -



CODE PLATE INTERPRETATION



ENG. CODES	TRANS CODES	CAR LINE	PRICE CLASS	BODY TYPE	ENG. CODE	MODEL YEAR
E-22-198	D11-A903	O-ALL	E-ECONOMY	21-2 DR. SED.	B-198 CU. IN.	0-1970
E-24-225	D12-A230 C/S	V-VALIANT	H-HIGH	41-4 DR. SED.	C-225 CU. IN.	1-1971
E-25-225	D13-A230 F/S	L-DART	K-POLICE	23-2 DR. H/TOP	E-SPL. 6 CYL.	
E-31-273	D21-A833	B-BARRACUDA	L-LOW	27-CV. CP.	G-318 CU. IN.	
E-44-318	D31-A904	J-CHALLENGER	M-MEDIUM	29-2 DR. SPORTS H/TOP	H-340 CU. IN.	
E-55-340	D32-A727	R-BELVEDERE SATELLITE	P-PREMIUM	45-6 P. WGN.	J-340 CU. IN. 4 BBL.	
E-57-360	D36-A727 H.D.	W-CORONET CHARGER	S-SPECIAL	46-9 P. WGN.	K-360 CU. IN.	
E-61-383	D49 SPECIAL ORDER	P-PLYMOUTH	T-TAXI	43-4 DR. H/TOP	L-383 CU. IN.	
E-63-383		D-DODGE			N-383 HI PERF.	
E-65-383		C-CHRYSLER			R-426 CU. IN.	
E-74-426		X-CHARGER			T-440 CU. IN.	
E-85-440		Y-IMPERIAL			U-440 HI. PERF.	
E-86-440					V-440 6 BBL.	
E-87-440					Z-SPL. 8 CYL.	

\* ASSEMBLY PLANT, A - LYNCH ROAD, C - JEFFERSON, E - LOS ANGELES, G - ST. LOUIS  
 B - HAMTRAMCK, D - BELVEDERE, F - NEWARK, R - WINDSOR

1970 MODEL CHART

CAR LINE WHEELBASE		SALES NAME	PRICE CLASS
PLYMOUTH 108" W.B.	V	Valiant	L
		Duster	
		Duster 340	S
DODGE 111" W.B.	L	Dart	L
		Swinger	
		Swinger 340	M
		Dart Custom	H
PLYMOUTH 108" W.B.	B	Barracuda	H
		Gran Coupe	P
		'Cuda	S
DODGE 110" W.B.	J	Challenger	H
		Challenger R/T	S
PLYMOUTH 115.8" W.B. Station Wagons 116.5 Wheelbase	R	Police	K
		Taxi	T
		Belvedere	L
		Roadrunner	M
		Satellite	H
		Sport Satellite	P
		GTX	S
		Police	K
		Taxi	T
		Coronet Deluxe	L
DODGE 116.5" W.B.	W	Super Bee	M
		Coronet 440	H
		Coronet 500	P
		Charger 500	
		Coronet R/T	S
		Charger R/T	
			S
PLYMOUTH 119.5" W.B. Station Wagons 121.5 Wheelbase	P	Police	K
		Taxi	T
		Fury I	E
		Fury II	L
		Suburban	
		Fury III	M
		Custom Suburban	
		Sport Fury	H
DODGE 121.5" W.B.	D	Sport Suburban	
		Police	K
		Taxi	T
		Polara	L
		Polara Custom	M
		Monaco	H
		Monaco 500	P
CHRYSLER 123.5" W.B. Station Wagons 121.5 Wheelbase	C	Newport	E
		Newport Custom	L
		300	M
		New Yorker	H
		Town & Country	P
IMPERIAL 126.5" W.B.	Y	Crown	L
		Le Baron	M

1971 MODEL CHART

MAKE Wheelbase		SALES NAME	PRICE CLASS
PLYMOUTH 108" W.B. Custom - 111" W.B.	V	Valiant	L
		Duster	
		Valiant Scamp	H
		Duster 340	S
DODGE 111" W.B. Demon 108" W.B.	L	Swinger Special	
		Dart	L
		Demon	
		Demon 340	M
		Dart Custom	H
PLYMOUTH 108" W.B.	B	Swinger	
		Barracuda	H
		Grand Coupe	P
DODGE 110" W.B.	J	'Cuda	S
		Challenger	H
DODGE 110" W.B.	J	Challenger R/T	S
			S
PLYMOUTH 2-Dr. Models 115" W.B. 4-Dr. Models 117.5" W.B.	R	Police	K
		Taxi	T
		Satellite	L
		Road Runner	M
		Satellite Sebring	H
		Satellite Custom	
		Satellite Sebring Plus	P
		Satellite Brougham	
		Satellite Regent	
		GTX	S
DODGE 2-Dr. Models 115" W.B. 4-Dr. Models 117.5" W.B.	W	Police	K
		Taxi	T
		Coronet	L
		Charger Super Bee	M
		Charger	
		Coronet Custom	H
		Charger 500	
		Coronet Brougham	P
		Coronet Crestwood	
		Charger SE	
Charger R/T	S		
PLYMOUTH 119.5" W.B. Station Wagons 121.5 Wheelbase	P	Police	K
		Taxi	T
		Fury I	E
		Fury II	L
		Suburban	
		Fury III	M
		Custom Suburban	
		Sport Fury	H
		Sport Suburban	
		Sport Fury GT	P
DODGE 121.5" W.B.	D	Police	K
		Taxi	T
		Polara Special	S
		Polara	E
		Polara Custom	L
		Polara Brougham	M
		Monaco	H
		Newport	E
		Newport Custom	L
		300	S
CHRYSLER 123.5" W.B. Station Wagons 121.5 Wheelbase	C	New Yorker	H
		Town & Country	P
IMPERIAL	Y	Le Baron	M

For Illustrations of Models Refer to Illustration



## ENGINE IDENTIFICATION NUMBERS

The following are examples of identification numbers of all 1970 engines and transmissions:

## ENGINE IDENTIFICATION

PLANT CODE	CUBIC INCH DISPL.	DATE CODE	SERIAL NUMBER
2 letters	3 digits	4 digits	4 digits
PM - Mound Rd.	198 - 225 - 318	Based on the calendar	A sequential number
PT - Trenton	340 - 360 - 383	on Page INF-8	beginning with 0001
	426 - 440		for each day's production.

Example serial number for an engine: PM31821870001

CYL.	CID	IDENTIFICATION NO. BOSS LOCATION
6	198	Right side, front of block, near coil
6	225	mounting bracket.
8	273	Left side, front of block,
8	318	below cylinder
8	340	head.
8	360	Left side, rear of block,
8	383	near oil pan
8	426	flange.
8	440	

## MANUAL TRANSMISSION IDENTIFICATION

PLANT CODE	COMPONENT CODE	DATE CODE	SERIAL NUMBER
2 letters	3 digits	4 digits	4 digits
PP - New Process	903 - 903 trans.	Based on the calendar	A sequential number
Gear Division	230 - 230 trans.	on Page INF-8	beginning with 0001
PK - Kokomo	833 - 833 trans.		for each day's production.

Example serial number for a manual transmission: PP90321870001

Location: Below centerline on Front Portion of Right Side.

## AUTOMATIC TRANSMISSION IDENTIFICATION

PLANT CODE	PART NO.	DATE CODE	SERIAL NUMBER
2 letters	7 digits	4 digits	4 digits
PK - Kokomo	2995 834	Based on the calendar	A sequential number
		on Page INF-8	beginning with 0001
			for each day's production.

Example serial number for an automatic transmission: PK299583421870001

Location: On Oil Pan Side Rail - Left Side.

ENGINE IDENTIFICATION NUMBERS

1969 DAY NUMBER					1970 DAY NUMBER												
DATE	SEPT.	OCT.	NOV.	DEC.	DATE	JAN.	FEB.	MAR.	APR.	MAY	JUNE	JULY	AUG.	SEPT.	OCT.	NOV.	DEC.
1	2957	2987	3018	3048	1	3079	3110	3138	3169	3199	3230	3260	3291	3322	3352	3383	3413
2	2958	2988	3019	3049	2	3080	3111	3139	3170	3200	3231	3261	3292	3323	3353	3384	3414
3	2959	2989	3020	3050	3	3081	3112	3140	3171	3201	3232	3262	3293	3324	3354	3385	3415
4	2960	2990	3021	3051	4	3082	3113	3141	3172	3202	3233	3263	3294	3325	3355	3386	3416
5	2961	2991	3022	3052	5	3083	3114	3142	3173	3203	3234	3264	3295	3326	3356	3387	3417
6	2962	2992	3023	3053	6	3084	3115	3143	3174	3204	3235	3265	3296	3327	3357	3388	3418
7	2963	2993	3024	3054	7	3085	3116	3144	3175	3205	3236	3266	3297	3328	3358	3389	3419
8	2964	2994	3025	3055	8	3086	3117	3145	3176	3206	3237	3267	3298	3329	3359	3390	3420
9	2965	2995	3026	3056	9	3087	3118	3146	3177	3207	3238	3268	3299	3330	3360	3391	3421
10	2966	2996	3027	3057	10	3088	3119	3147	3178	3208	3239	3269	3300	3331	3366	3392	3422
11	2967	2997	3028	3058	11	3089	3120	3148	3179	3209	3240	3270	3301	3332	3362	3393	3423
12	2968	2998	3029	3059	12	3090	3121	3149	3180	3210	3241	3271	3302	3333	3363	3394	3424
13	2969	2999	3030	3060	13	3091	3122	3150	3181	3211	3242	3272	3303	3334	3364	3395	3425
14	2970	3000	3031	3061	14	3092	3123	3151	3182	3212	3243	3273	3304	3335	3365	3396	3426
15	2971	3001	3032	3062	15	3093	3124	3152	3183	3213	3244	3274	3305	3336	3366	3397	3427
16	2972	3002	3033	3063	16	3094	3125	3153	3184	3214	3245	3275	3306	3337	3367	3398	3428
17	2973	3003	3034	3064	17	3095	3126	3154	3185	3215	3246	3276	3307	3338	3368	3399	3429
18	2974	3004	3035	3065	18	3096	3127	3155	3186	3216	3247	3277	3308	3339	3369	3400	3430
19	2975	3005	3036	3066	19	3097	3128	3156	3187	3217	3248	3278	3309	3340	3370	3401	3431
20	2976	3006	3037	3067	20	3098	3129	3157	3188	3218	3249	3279	3310	3341	3371	3402	3432
21	2977	3007	3038	3068	21	3099	3130	3158	3189	3219	3250	3280	3311	3342	3372	3403	3433
22	2978	3008	3039	3069	22	3100	3131	3159	3190	3220	3251	3281	3312	3343	3373	3404	3434
23	2979	3009	3040	3070	23	3101	3132	3160	3191	3221	3252	3282	3313	3344	3374	3405	3435
24	2980	3010	3041	3071	24	3102	3133	3161	3192	3222	3253	3283	3314	3345	3375	3406	3436
25	2981	3011	3042	3072	25	3103	3134	3162	3193	3223	3254	3284	3315	3346	3376	3407	3437
26	2982	3012	3043	3073	26	3104	3135	3163	3194	3224	3255	3285	3316	3347	3377	3408	3438
27	2983	3013	3044	3074	27	3105	3136	3164	3195	3225	3256	3286	3317	3348	3378	3409	3439
28	2984	3014	3045	3075	28	3106	3137	3165	3196	3226	3257	3287	3318	3349	3379	3410	3440
29	2985	3015	3046	3076	29	3107		3166	3197	3227	3258	3288	3319	3350	3380	3411	3441
30	2986	3016	3047	3077	30	3108		3167	3198	3228	3259	3289	3320	3351	3381	3412	3442
31		3017		3078		3109		3168		3229		3290	3321		3382		3443

1971 DAY NUMBER								
DATE	JAN.	FEB.	MAR.	APR.	MAY	JUNE	JULY	AUG.
1	3444	3475	3503	3534	3564	3595	3625	3656
2	3445	3476	3504	3535	3565	3596	3626	3657
3	3446	3477	3505	3536	3566	3597	3627	3658
4	3447	3478	3506	3537	3567	3598	3628	3659
5	3448	3479	3507	3538	3568	3599	3629	3660
6	3449	3480	3508	3539	3569	3600	3630	3661
7	3450	3481	3509	3540	3570	3601	3631	3662
8	3451	3482	3510	3541	3571	3602	3632	3663
9	3452	3483	3511	3542	3572	3603	3633	3664
10	3453	3484	3512	3543	3573	3604	3634	3665
11	3454	3485	3513	3544	3574	3605	3635	3666
12	3455	3486	3514	3545	3575	3606	3636	3667
13	3456	3487	3515	3546	3576	3607	3636	3668
14	3457	3488	3516	3547	3577	3608	3638	3669
15	3458	3489	3517	3548	3578	3609	3639	3670
16	3459	3490	3518	3549	3579	3610	3640	3671
17	3460	3491	3519	3550	3580	3611	3641	3672
18	3461	3492	3520	3551	3581	3612	3642	3673
19	3462	3493	3521	3552	3582	3613	3643	3674
20	3463	3494	3522	3553	3583	3614	3644	3675
21	3464	3495	3523	3554	3584	3615	3645	3676
22	3465	3496	3524	3555	3585	3616	3646	3677
23	3466	3497	3525	3556	3586	3617	3647	3678
24	3467	3498	3526	3557	3587	3618	3648	3679
25	3468	3499	3527	3558	3588	3619	3649	3680
26	3469	3500	3528	3559	3589	3620	3650	3681
27	3470	3501	3529	3560	3590	3621	3651	3682
28	3471	3502	3530	3561	3591	3622	3652	3683
29	3472		3531	3562	3592	3623	3653	3684
30	3473		3532	3563	3593	3624	3654	3685
31	3474		3533		3594		3655	3686

IMPORTANT:  
Parts Division replacement engines are supplied with blank engine number bosses only. Dealers are governed by state law on the application of engine numbers. In states where license fees are based on displacement or taxable horsepower, it will be necessary to change vehicle registration if the new replacement engine differs from the one it replaces.

## ABBREVIATIONS

ABBREVIATIONS AS USED THROUGHOUT CATALOG ARE INTERPRETED AS FOLLOWS:

ABS .....	ABSORBER	CHAM .....	CHAMFERED
ACC .....	ACCESSORY	CHMBR .....	CHAMBER
ACCEL .....	ACCELERATOR	CHR .....	CHROMIUM
A/CLNR .....	AIR CLEANER	C. I. ....	CUBIC INCH
A/COMP .....	AIR COMPRESSOR	C/IRON .....	CAST IRON
A/COND .....	AIR CONDITIONING	C/CASE .....	CRANKCASE
ACTG .....	ACTUATING	CK/SHFT .....	CRANKSHAFT
ACTR .....	ACTUATOR	CL .....	CLEANER
ADAPT .....	ADAPTOR-ADAPTATION	CL/NUT .....	CLINCH NUT
ADJ .....	ADJUSTING-ADJUSTOR-ADJUSTABLE-ADJUSTMENT	C/LP .....	COURTESY LAMP
A/INL .....	AIR INLET	CLSR .....	CLOSURE
ALTR .....	ALTERNATOR	C/LTR .....	CIGAR OR CIGARETTE LIGHTER
ALUM .....	ALUMINUM	C/MBR .....	CROSSMEMBER
AMP .....	AMPERE	COE .....	CAB OVER ENGINE
AMPL .....	AMPLIFIER	COL .....	COLUMN
AMTR .....	AMMETER	COMB .....	COMBINATION
ANCH .....	ANCHOR	COMBN .....	COMBUSTION
& .....	AND	COMP .....	COMPLETE, COMPONENT
A/OUT .....	AIR OUTLET	COMPN .....	COMPRESSION
APPROX .....	APPROXIMATE, APPROXIMATELY	COMPR .....	COMPRESSOR
AR .....	AS REQUIRED	COMPT .....	COMPARTMENT
A/RATLR .....	ANTI RATTLER	COMTR .....	COMMUTATOR
A/REST .....	ARM REST	COND .....	CONDENSER
ARM .....	ARMATURE	CONDT .....	CONDUIT
A/SQK .....	ANTI SQUEAK	CONDTG .....	CONDITIONING
ASSY .....	ASSEMBLY	CONN .....	CONNECTING-CONNECTION-CONNECTOR
A/SUSP .....	AIR SUSPENSION	CONT .....	CONTINUED-CONTROL
ATC .....	AUTOMATIC TEMPERATURE CONTROL	CONT'D .....	CONTINUED
ATT .....	ATTACHING	CONV .....	CONVERTER
A/TRANS .....	AUTOMATIC TRANSMISSION	COP .....	COPPER
AUTO .....	AUTOMATIC	CO/SHFT .....	COUNTERSHAFT
AUX .....	AUXILIARY	CO/WT .....	COUNTERWEIGHT
BAL .....	BALANCE	CP .....	CANDLEPOWER
BATT .....	BATTERY	C/PILLAR .....	CENTER PILLAR
BBL .....	BARREL	CPLG .....	COUPLING
B/BRK .....	BOOSTER BRAKE	C/SHFT .....	CROSS SHAFT
B/CRK .....	BELL CRANK	CSTG .....	CASTING
B.E. ....	BLACK ENAMEL	CTR .....	CENTER
B/JNT .....	BALL JOINT	CU .....	CUBIC
BLK .....	BLOCK	CUSH .....	CUSHION
BLT .....	BUILT	CUST .....	CUSTOM
BLWR .....	BLOWER	CV .....	CONVERTIBLE
BMPR .....	BUMPER	C/VAL .....	CONTROL VALVE
BOLT & RET .....	BOLT & RETAINER	CVR .....	COVER
BOLT & WA .....	BOLT & WASHER	C/WT .....	COUNTERWEIGHT
BR .....	BRASS	CYL .....	CYLINDER
BRD .....	BOARD	DBL .....	DOUBLE
BRG .....	BEARING	D/CVR .....	DUST COVER
BRK .....	BRAKE	D/E .....	DRIVE END
BRKT .....	BRACKET	DECAL .....	DECALCOMANIA
BRKR .....	BREAKER	DEFL .....	DEFLECTOR
BRT .....	BRIGHT	DEFR .....	DEFROSTER
BRZ .....	BRONZE	DEG (°) .....	DEGREE
BSTR .....	BOOSTER	D/EXH .....	DUAL EXHAUST
B/STUD .....	BALL STUD	DIA .....	DIAMETER
BTM .....	BOTTOM	DIAG .....	DIAGONAL
BTN .....	BUTTON	DIAPH .....	DIAPHRAGM
B/UP .....	BACK UP	DIFF .....	DIFFERENTIAL
BUSH .....	BUSHING	DIM .....	DIMENSION
CAD .....	CADMIUM	DIR .....	DIRECT-DIRECTIONAL
CAN .....	CANADA-CANADIAN	DIR CL .....	DIRECT CLUTCH
CAP .....	CAPACITY	DIST .....	DISTRIBUTOR-DISTRIBUTING
C.A.S. ....	CLEANER AIR SYSTEM	DIV .....	DIVISION-DIVISIONAL
CARB .....	CARBURETOR	D/LINK .....	DRAG LINK
C/BAR .....	CROSS BAR	D/LP .....	DOME LAMP
CBL .....	CABLE	DMPR .....	DAMPER
C/BRD .....	CIRCUIT BOARD	DOM .....	DOMESTIC
C/BRKR .....	CIRCUIT BREAKER	D/PINION .....	DRIVE PINION
CCW .....	COUNTERCLOCKWISE	DR .....	DOOR
C/E .....	COMMUTATOR END		

## ABBREVIATIONS (Cont'd.)

D/R SHAFT .....	DOUBLE ROCKER SHAFT	HD .....	HEAD
DRV .....	DRIVE	H/D .....	HEAVY DUTY
DRVN .....	DRIVEN	HDL .....	HANDLE
D/SEAL .....	DUST SEAL	H/LIN .....	HEAD LINING
D/SHLD .....	DUST SHIELD	HDLS .....	HEADLESS
D/SW .....	DIMMER SWITCH	HDR .....	HEADER
ECC .....	ECCENTRIC	HEMI .....	HEMISPHERICAL
E.C.S. ....	EMISSION CONTROL SYSTEM	HEX .....	HEXAGON
ELECT .....	ELECTRIC	HGE .....	HINGE
ELIM .....	ELIMINATOR	H/LP .....	HEADLAMP
ENG .....	ENGINE	H/PERF .....	HIGH PERFORMANCE
EQ .....	EQUIPMENT	H/REST .....	HEAD REST
ESC .....	ESCUTCHEON	HSG .....	HOUSING
ETC .....	ET CETERA	H/SINK .....	HEAT SINK
EVAP .....	EVAPORATION-EVAPORATOR	H/SHLD .....	HEAT SHIELD
EX .....	EXTRA	HTR .....	HEATER
EXH .....	EXHAUST	HVY .....	HEAVY
EXP .....	EXPORT	HYD .....	HYDRAULIC
EXPN .....	EXPANSION	I/ARM .....	IDLER ARM
EXT .....	EXTENSION	I.D. ....	INSIDE DIAMETER
EXTL .....	EXTERNAL	IDENT .....	IDENTIFICATION
EXTR .....	EXTRUDED	IGN .....	IGNITION
F .....	FAHRENHEIT	IN .....	INCH
FACT .....	FACTORY	INCL .....	INCLUSIVE-INCLUDES
F/AIR .....	FRESH AIR	IND .....	INDUSTRIAL
FAST .....	FASTENING-FASTENER	INDIC .....	INDICATOR
F/AXLE .....	FRONT AXLE	INL .....	INLET
F/BRD .....	FLOOR BOARD	INR .....	INNER
F/CPLG .....	FLUID COUPLING	INS .....	INSULATING-INSULATION-INSULATOR
F/DR .....	FRONT DOOR	INST .....	INSTRUMENT-INSTRUCTION
F/FILT .....	FUEL FILTER	INT .....	INTAKE
F/FLR .....	FRONT FLOOR	INTR .....	INTERMITTENTLY-INTERMEDIATE
F/GA .....	FUEL GAGE	INTL .....	INTERNAL
F/IDLE .....	FAST IDLE	INTLK .....	INTERLOCK
FIL HD .....	FILLISTER HEAD	I/PNL .....	INSTRUMENT PANEL
FIN .....	FINISH	I/PULLEY .....	IDLER PULLEY
F/INJ .....	FUEL INJECTION	I/S .....	INSIDE
FLD .....	FIELD	J/BLK .....	JUNCTION BLOCK
FLEX .....	FLEXIBLE	JNT .....	JOINT
FLG .....	FLANGE	K/DN .....	KICKDOWN
FL HD .....	FLAT HEAD	KILO .....	KILOMETER
FLR .....	FLOOR	KNU .....	KNUCKLE
F/MLDG .....	FINISH MOULDING	LBS .....	POUNDS
FNDR .....	FENDER	L/C .....	LOW COMPRESSION
F/PAN .....	FLOOR PAN	LCF .....	LOW CAB FORWARD
F/PUMP .....	FUEL PUMP	L/COMPT .....	LUGGAGE COMPARTMENT
FREQ .....	FREQUENCY	LEA .....	LEATHER
FRT .....	FRONT	LGH .....	LENGTH
FT .....	FOOT-FEET	LHD .....	LEFT HAND DRIVE
F/TANK .....	FUEL TANK	L.H. THD .....	LEFT HAND THREAD
FTG .....	FITTING	LIC .....	LICENSE
F/TOP .....	FOLDING TOP	LIN .....	LINING-LINER
GA .....	GAUGE-GAGE	LK .....	LOCK
GALV .....	GALVANIZED	LKG .....	LOCKING
GARN .....	GARNISH	LK/NUT .....	LOCK NUT
G/BOX .....	GLOVE BOX	LK/WA .....	LOCK WASHER
GEN .....	GENERATOR	LOC .....	LOCATING
GLA .....	GLASS	LP .....	LAMP
G/MLDG .....	GARNISH MOULDING	L.S.H. ....	LOW SECTION HEIGHT
GND .....	GROUND	LT .....	LEFT
GOV .....	GOVERNOR	LTR .....	LIGHTER
GR .....	GEAR	LUB .....	LUBRICANT-LUBRICATING
G/REG .....	GENERATOR REGULATOR	LUGG .....	LUGGAGE
GRL .....	GRILLE	LVR .....	LEVER
GRMT .....	GROMMET	LWR .....	LOWER
G/SHIFT .....	GEARSHIFT	M/ADJ .....	MANUAL ADJUSTING
GSKT .....	GASKET	MAN .....	MANUAL
GVW .....	GROSS VEHICLE WEIGHT	MANF .....	MANIFOLD
H/BRK .....	HAND BRAKE		
H/C .....	HIGH COMPRESSION		

## ABBREVIATIONS (Cont'd.)

MAX .....	MAXIMUM	POLY .....	POLYESTER
MAX. PERF .....	MAXIMUM PERFORMANCE	P/PNL .....	POCKET PANEL
M/BRK .....	MANUAL BRAKE	PRESS .....	PRESSURE
MBR .....	MEMBER	PRI .....	PRIMARY
M/CYL .....	MASTER CYLINDER	PROD .....	PRODUCTION
MECH .....	MECHANISM	P/ROD .....	PUSH ROD
MED .....	MEDIUM	PROP .....	PROPELLER
MEDAL .....	MEDALLION	PRPG .....	PROPORTIONING
MIL .....	MILITARY	PSF .....	POUNDS PER SQUARE FOOT
MIN .....	MINIMUM	PSI .....	POUNDS PER SQUARE INCH
MLDG .....	MOULDING	P/STRG .....	POWER STEERING
MOD .....	MODEL	PT .....	POINT
M/MTRG .....	MAIN METERING	PTO .....	POWER TAKE-OFF
M.P.H. ....	MILES PER HOUR	PWR .....	POWER
MT .....	MOUNT	Q/PNL .....	QUARTER PANEL
MTG .....	MOUNTING	QTR .....	QUARTER
MTR .....	MOTOR	Q/WDO .....	QUARTER WINDOW
M/TRANS .....	MANUAL TRANSMISSION	R .....	RADIUS
MTRG .....	METERING	R/A .....	REAR AXLE
NEG .....	NEGATIVE	R/AXLE .....	REAR AXLE
NEUT .....	NEUTRAL	RAD .....	RADIATOR
NI .....	NICKEL	R/CONT .....	REMOTE CONTROL
NO. OR # .....	NUMBER	RC/SHFT .....	ROCKER SHAFT
NOM .....	NOMINAL	RD .....	ROUND
NOx .....	NITROGEN OXIDE EMISSION CONTROL	R/DR .....	REAR DOOR
N/PLT .....	NAME PLATE	REC .....	RECIEVER
NUT & WA .....	NUT AND WASHER	RECIR .....	RECIRCULATING
O/CTR .....	OVER CENTER	RECT .....	RECTANGULAR
O.D. ....	OUTSIDE DIAMETER	RECTR .....	RECTIFIER
O/DRV .....	OVER DRIVE	RED .....	REDUCTION
O/GA .....	OIL GAUGE	REFL .....	REFLECTOR
OPER .....	OPERATING	REG .....	REGULATOR
OPNG .....	OPENING	REINF .....	REINFORCEMENT
OPP .....	OPPOSITE	REL .....	RELEASE
OPT .....	OPTIONAL	REM .....	REMOTE
O/PUMP .....	OIL PUMP	REQ .....	REQUIRED
ORN .....	ORNAMENT	RES .....	RESISTOR
O/RUNN .....	OVERRUNNING	RET .....	RETAINER
O/S .....	OUTSIDE	RETG .....	RETAINING
O/SIZE .....	OVERSIZE	REV .....	REVERSE
OTR .....	OUTER	REVERB .....	REVERBERATOR
OUTL .....	OUTLET	R/FLR .....	REAR FLOOR
OV .....	OVAL	RHD .....	RIGHT HAND DRIVE
O/W .....	OPTIONAL WITH	RHEO .....	RHEOSTAT
O/WRAP .....	OVERWRAP	R. H. THD .....	RIGHT HAND THREAD
OZ .....	OUNCE	R/L .....	RIGHT AND LEFT
P .....	PITCH	RPM .....	REVOLUTIONS PER MINUTE
PACK .....	PACKING	R/QTR .....	REAR QUARTER
PARK .....	PARKING	RR .....	REAR
PART .....	PARTIAL, PARTITION	RSVR .....	RESERVOIR
PASS .....	PASSENGER	RT .....	RIGHT
P/BRK .....	POWER BRAKE	R/WDO .....	REAR WINDOW
P/BTN .....	PUSH BUTTON	S/ABS .....	SHOCK ABSORBER
PC/BRD .....	PRINTED CIRCUIT BOARD	S/COMPT .....	SIDE COMPARTMENT
P.C.V. ....	POSITIVE CRANKCASE VENT	S/DEFL .....	STONE DEFLECTOR
PED .....	PEDAL	SECT .....	SECTION
PERF .....	PERFORMANCE	SER .....	SERIAL-SERVICE
PIST .....	PISTON	S/EXH .....	SINGLE EXHAUST
PIV .....	PIVOT	S-FIN .....	SEMI-FINISHED
PKG .....	PACKAGE	S/GR .....	STEERING GEAR
PL .....	PLAIN	SHFT .....	SHIFT
P/LAMP .....	PARKING LAMP	SHLD .....	SHIELD
PLR .....	PILLAR	SIG .....	SIGNAL
PLT .....	PLATE-PLATED	S/KNU .....	STEERING KNUCKLE
PLUNG .....	PLUNGER	SLD .....	SLIDE
PL/WA .....	PLAIN WASHER	SLDG .....	SLIDING
P/MTR .....	POTENTIOMETER	S/LP .....	STOP LAMP
PNL .....	PANEL	SLTD .....	SLOTTED
PNTD .....	PAINTED	SLV .....	SLEEVE
POS .....	POSITIVE		

ABBREVIATIONS (Cont'd.)

S/MBR .....	SIDE MEMBER	TORS .....	TORSION
SOC .....	SOCKET	TPI .....	THREADS PER INCH
SOL .....	SOLENOID	T/PIPE .....	TAIL PIPE
SPD .....	SPEED	T/PLT .....	TAPPING PLATE
SPEEDO .....	SPEEDOMETER	T/PNL .....	TRIM PANEL
SPKR .....	SPEAKER	TPR .....	TAPER
SPL .....	SPECIAL	TRANS .....	TRANSMISSION
SPL. EQUIP .....	SPECIAL EQUIPMENT	TRANSF .....	TRANSFER
SPRG .....	SPRING	TRIMD .....	TRIMMED
S/PNL .....	SIDE PANEL	TRUN .....	TRUNNION
SP/SHLD .....	SPLASH SHIELD	T/SIG .....	TURN SIGNAL
SQ .....	SQUARE	TST .....	TAIL STOP & TURNING
S/R SHAFT .....	SINGLE ROCKER SHAFT	T/STRIP .....	TACKING STRIP
S/RAIL .....	SIDE RAIL	TUB .....	TUBULAR
S/RING .....	SNAP RING	U/BODY .....	UNDERBODY
S/SHLD .....	SIDE SHIELD	U/DRV .....	UNDERDRIVE
S/SILL .....	SIDE SILL	U/JNT .....	UNIVERSAL JOINT
S/SPD .....	SINGLE SPEED	UNIV .....	UNIVERSAL
STA .....	STATION-STATIONARY	UPR .....	UPPER
STAB .....	STABILIZER	U/S .....	UNDERSIZE
STD .....	STANDARD	U/SEAT .....	UNDERSEAT
STGHT .....	STRAIGHT	U/W .....	USED WITH
STL .....	STEEL	V .....	VOLT
STRG .....	STEERING	VAC .....	VACUUM
STRKR .....	STRIKER	VAL .....	VALUE
STRNR .....	STRAINER	V/DMPR .....	VIBRATION DAMPER
STRTR .....	STARTER	VENT .....	VENTILATOR-VENTILATING
SUCT .....	SUCTION	VERT .....	VERTICAL
SUPT .....	SUPPORT	VOL. CONT .....	VOLUME CONTROL
SUSP .....	SUSPENSION	V/REG .....	VOLTAGE REGULATOR
SW .....	SWITCH	V/SPD .....	VARIABLE SPEED
SYNCH .....	SYNCHRONIZER	V/WING .....	VENT WING
T .....	TEETH	W .....	WATT
TAP .....	TAPPING	W/ .....	WITH
T/BKL .....	TURN BUCKLE	WA .....	WASHER
T/BLK .....	TERMINAL BLOCK	WAG .....	WAGON
T/COMP .....	TRIMMED COMPLETE	W.B. ....	WHEELBASE
T/CONT .....	THROTTLE CONTROL	W/BRG .....	WHEEL BEARING
T/CONV .....	TORQUE CONVERTER	W/CORD .....	WEATHERCORD
TEMP .....	TEMPERATURE	WDO .....	WINDOW
TERM .....	TERMINAL	WHL .....	WHEEL
T/GA .....	TEMPERATURE GAUGE	W/HSE .....	WHEELHOUSE
T/GATE .....	TAILGATE	W/LIFT .....	WINDOW LIFT
THD .....	THREAD	W/O .....	WITHOUT
THK .....	THICK	W/PUMP .....	WATER PUMP
THERMO .....	THERMOSTAT	W/REG .....	WINDOW REGULATOR
3RD .....	THIRD	W/SHLD .....	WINDSHIELD
THR .....	THRUST	W/STRIP .....	WEATHERSTRIP
THROT .....	THROTTLE	WT .....	WEIGHT
T/LP .....	TAIL LAMP	W/WASHER .....	WINDSHIELD WASHER
TORQ .....	TORQUE	W/WPR .....	WINDSHIELD WIPER
		X/MBR .....	CROSS MEMBER

NOTES

---



---



---



---



---



---



---



---



---



---