

1965

QUICK REFERENCE INDEX To use, bend manual back to expose black spots on pages of the various sections. Then, by means of the index on this page, locate the corresponding black spots on the first page of the section you desire to find.

IMPERIAL and CHRYSLER

SERVICE TECHNICAL MANUAL

MODELS

**AC-1 (NEWPORT) AC-2 (300)
AC-3 (NEW YORKER)
AY-1 (IMPERIAL)**

This Service Technical Manual is compiled as a reference and guide to provide Imperial and Chrysler Service Technicians with the proper adjustments and repair procedures for servicing the 1965 Imperial and Chrysler vehicles. A thorough understanding of the contents, will assist service personnel to maintain the quality standards built into Imperial and Chrysler vehicles.

In order to use the Service Technical Manual to the best advantage, the previous corresponding and superseding of these Models is as follows:

CHRYSLER MODELS

	1965		1964
Newport	AC-1	Newport	VC-1
300	AC-2	300	VC-2
New Yorker	AC-3	New Yorker	VC-3
C300-L	AC-2-300L	C300-K	VC-2-300K

IMPERIAL MODELS

	1965		1964
Crown	AY-1	Crown	VY-1
LeBaron	AY-1	LeBaron	VY-1

The service tools referred to in this Manual are available through Kelsey-Hayes Company, Miller Special Tools, 17640 Grand River, Detroit, Michigan 48227, U.S.A. unless otherwise specified.

Extra copies of this Manual are available at \$5.00 each under Part Number 81-070-5150. Order from Chrysler-Plymouth Division, Service Department, P.O. Box 1658, Detroit, Michigan 48231.

CHRYSLER DIVISION

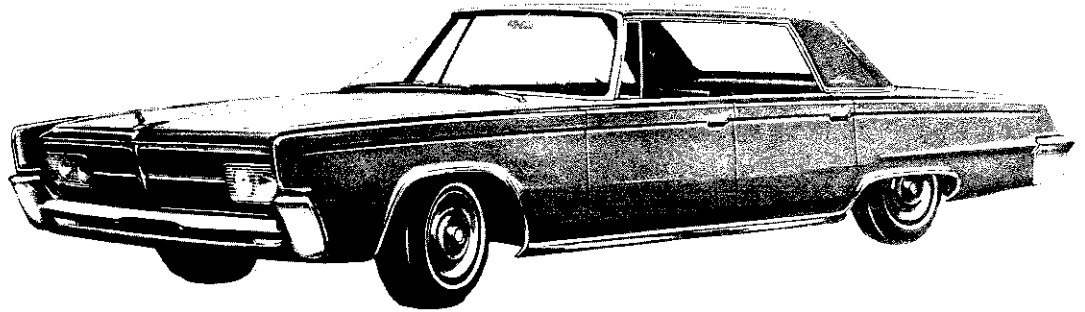


CHRYSLER
MOTORS CORPORATION

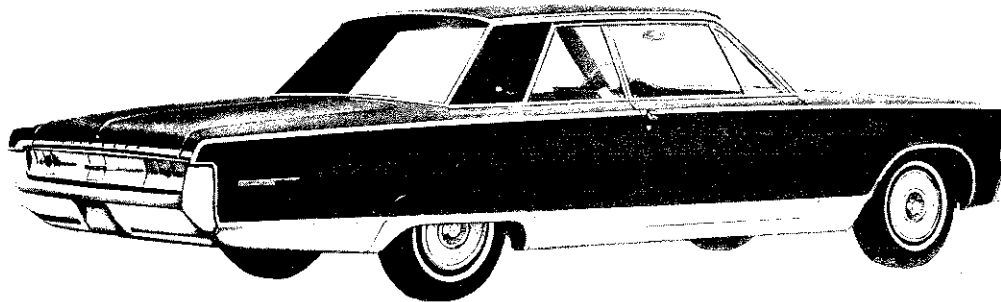
Chrysler Corporation reserves the right to make changes in design or to make additions to or improvements in its product without imposing any obligations upon itself to install them on its products previously manufactured.

GROUP INDEX

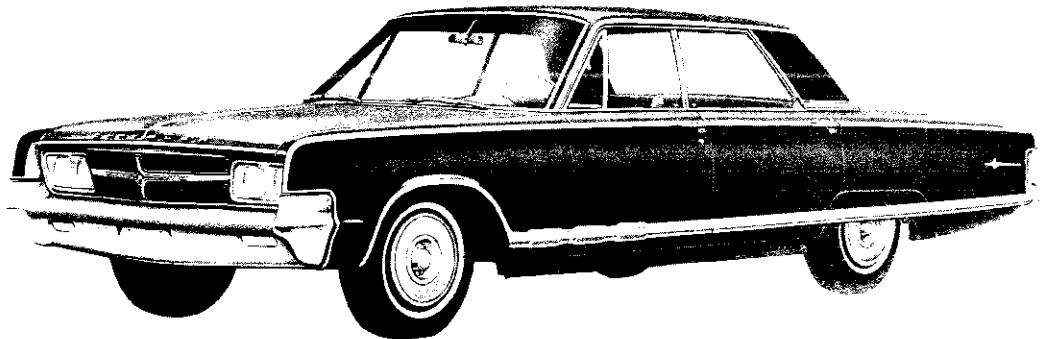
	Introduction and General Specifications
0	Lubrication and Maintenance
1	Accessories — (Radios, Heaters, Mirrors)
2	Front Suspension
3	Rear Axle
5	Brakes — Service Parking
6	Clutch
7	Cooling System — Accessory Belt Drives
8	Electrical and Instruments
9	Engine — Engine Oiling
11	Exhaust System
13	Frame
14	Fuel System
16	Propeller Shaft and Universal Joints
17	Springs and Shock Absorbers
19	Steering Gear — Manual Power
21	Transmission — Standard Automatic
22	Wheels, Bearings and Tires
23	Body and Sheet Metal
24	Air-Conditioning
—	Specifications
—	Alphabetical Index



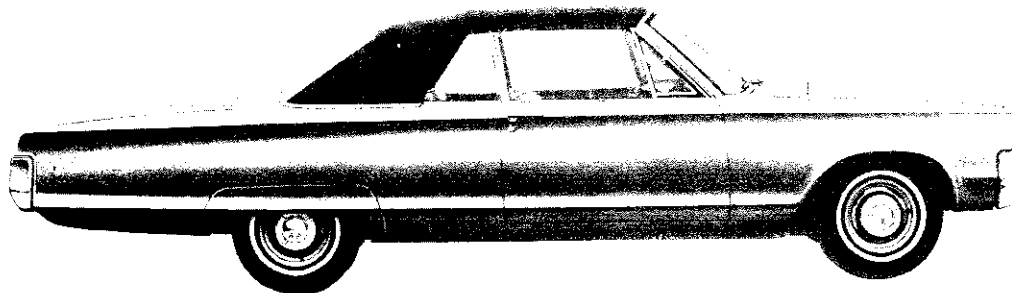
AY-1 IMPERIAL LEBARON FOUR-DOOR HARDTOP



AC-3 CHRYSLER NEW YORKER TWO-DOOR HARDTOP



AC-2 CHRYSLER 300 FOUR-DOOR HARDTOP



AC-1 CHRYSLER NEWPORT CONVERTIBLE

Fig. 1—1965 Imperial and Chrysler Models

NK

DEALER—FACTORY CONTACT

The following outline of the proper procedure to use in obtaining assistance or advice on any matter applying to Service will insure your inquiries receiving prompt attention and handling. Make certain those members of your organization who might have the occasion to contact either your Regional Office or the factory, are thoroughly familiar with this procedure.

All matters pertaining in any way to Warranty Service Claims, or of a technical nature, should be handled by you direct with your Regional Service Office. When in doubt as to the proper procedure to follow in the handling of a claim or complaint, prompt results can be obtained through a letter, telegram or phone call to your Regional Service Office—making certain to include all necessary information. If the aid of a Service Representative is necessary, the Regional Office will arrange for his contact as promptly as circumstances permit.

Letters or telegrams to the Regional Service Office, should be confined to one subject only and should include the following information:

Car Serial Number	Owner's Name
Date of Sale	Mileage

Complete description of difficulty, corrective action taken, your recommendations as to what should be done and the reason for so doing.

Include Paint and Trim Code Numbers where finish, upholstery, body or sheet metal is involved, and estimate of net cost of repairs.

CHRYSLER-PLYMOUTH DIVISION

With the exception of orders for parts or parts literature, all requests for Imperial, Chrysler, Plymouth Service literature such as Service Bulletins, Service Manuals, Owner Manuals, Time Schedules, W.S.C.'s or other Chrysler—Plymouth Division Service literature, should be addressed to:

<p>(Letters) Chrysler Corporation Chrysler—Plymouth Division Service Department P. O. Box 1658 Detroit, Michigan 48231</p>	<p>(Telegrams) Chrysler—Plymouth Division Attention (Name of person to whom sent) WUX Detroit, Michigan</p>
---	--

Phone 822-4700 (Area Code 313)

NOTE: Please make certain to include the Code WUX on all telegrams to the Chrysler-Plymouth Division as this insures delivery direct to our Teleprint Room thus eliminating delay.

MASTER TECHNICIANS SERVICE CONFERENCE

All correspondence concerning enrollment in the M.T.S.C. Program, issuance of awards, orders for additional material, the return of reports, or any other matters relating to this program, should be addressed to:

Master Technician Service Conference
 Chrysler Corporation Training Center
 P.O. Box 2119
 Detroit, Michigan 48231
 Phone 539-3000—Area Code 313

PARTS DIVISION**General**

ALL orders for parts or accessories, emergency or otherwise, should be forwarded direct to your source of supply or to the parts plant listed below serving the area in which you are located.

To insure your receiving the parts required by you more promptly, close attention should be given to the procedure listed under "Ordering Information" and "Your Parts Orders" in the introductory front part of all MoPar Parts Lists and Price Lists. Particularly where parts are ordered for a specific car, it is very essential that your order include the car serial and engine numbers, and in the case of body parts, the body number.

CENTER LINE, MICHIGAN

Chrysler Motors Corporation
P.O. Box 300
Center Line, Michigan 48015
Telephone—Detroit
539-3000
Area Code—313

NEWARK, DELAWARE

Chrysler Motors Corporation
South College Avenue
P.O. Box 120
Newark, Delaware 19711
Telephone—Newark, Endicott 8-2521
Area Code—302

ATLANTA, GEORGIA

Chrysler Motors Corporation
1150 Murphy Avenue, S.W.
P.O. Box 10957
Atlanta, Georgia 30310
Telephone—Atlanta, Plaza 5-2531
Area Code—404

SAN LEANDRO, CALIFORNIA

Chrysler Motors Corporation
1955 Davis Street
P.O. Box 5
San Leandro, California 94577
Telephone—San Leandro, Neptune 8-6200
Area Code—415

KANSAS CITY, KANSAS

Chrysler Motors Corporation
Funston & Chrysler Roads
P.O. Box 2188
Kansas City, Kansas 66110
Telephone—Kansas City, Kansas—Fairfax 1-3300
Area Code—913

CEDAR GROVE, ESSEX COUNTY, NEW JERSEY

Cedar Grove Parts Depot
20 Sand Park Drive
Cedar Grove, Essex County, N.J.
Telephone—
Cedar Grove, 239-8100
Area Code—201

Parts Division Literature

Request for Parts Division literature such as Parts Books, Parts Price Lists, Parts Bulletins, etc., should be forwarded direct to: Chrysler Motors Corporation P.O. Box 1718 Detroit 31, Michigan, Attention: Parts Catalog Department.

Shortage of Accessories or Other Equipment on New Cars

Before placing an order for missing accessories, other parts or equipment, on new cars received, examine the vehicle for the presence of a "back order" notice, which if present, will be found attached to the bracket for the inside rear view mirror. Such back-ordered short items will be shipped from the assembly plant as soon as stock is available, and should not be ordered from the Parts Division.

Emergency Orders—Car Down or Truck Down

1. When parts are not immediately available from your local MoPar source of supply. TELEPHONE, TELEGRAPH or AIR MAIL your order to:
 - a. PARTS PLANT SERVING YOUR AREA for all parts coded "V", "F", "M", "N" and "P". Use Parts Order Form No. 81-670-0139.
 - b. FACTORY PARTS PLANT AT CENTER LINE for all parts coded "D" . . . and orders for "D" parts combined with "V", "F", "M", "N" and "P" parts required for an individual service job. Use Parts Order Form No. 81-670-0190 (Supersedes D-16712).
 - c. Quantities ordered should not exceed actual requirements for vehicle out of service. **Always supply car, vehicle serial number and Truck Parts Availability Number (1960-62 Models) in addition to Vehicle Number.**
2. Identify orders as "Emergency Car Down."
3. List part numbers in numerical sequence. Use your dealer code number on all orders. Assign only one order number to the order regardless of size.
4. "V", "F", "M", "N" and "P" parts will be shipped transportation charges collect. "D" parts will be shipped transportation prepaid when "Normal Prepaid Transportation" is specified; shipped collect when "Premium Transportation" is specified.

1965 MODELS

<i>Chrysler Newport</i>	AC-1	<i>Chrysler 300-L</i>	AC-2-300L
<i>Chrysler 300</i>	AC-2	<i>Imperial Crown</i>	AY-2
<i>Chrysler New Yorker</i>	AC-3	<i>Imperial LeBaron</i>	AY-3

VEHICLE AND ENGINE NUMBERS

VEHICLE NUMBER—The vehicle number (Serial Number) is located on a metal plate attached to the left front door body hinge pillar, as shown in Figure 2.

All vehicle numbers contain ten digits. The vehicle number is a code which tells the make of vehicle (1st digit), model of vehicle (2nd digit), year built (3rd digit), assembly plant (4th digit), and vehicle sequence number (last six digits) starting with 100001.

ENGINE NUMBER—The engine number is stamped on the boss on the top side of the cylinder block just back of the water pump, as shown in Figure 3.



Fig. 2—Vehicle Number

1st Letter Make of Vehicle	2nd Digit Model of Vehicle	3rd Digit Year Built	4th Digit Assembly Plant
C. Chrysler	1. Newport	5 (1965)	3-Detroit
	2. 300		
	3. New Yorker		
	4. 300L		
Y. Imperial	5. Newport-Station Wagon	5 (1965)	3-Detroit
	7. New Yorker-Station Wagon		
	9. Police		
	2. Crown	3. LeBaron	

BODY PLATE NUMBER LOCATION

The body number is stamped on a plate which is attached on the engine side of the cowl just above the master cylinder on Imperial Models, Fig. 4. On Chrysler Models the plate is located above the top hinge of the drivers side door. The plate shows the

body type, trim code, schedule date, trim code and the paint code.

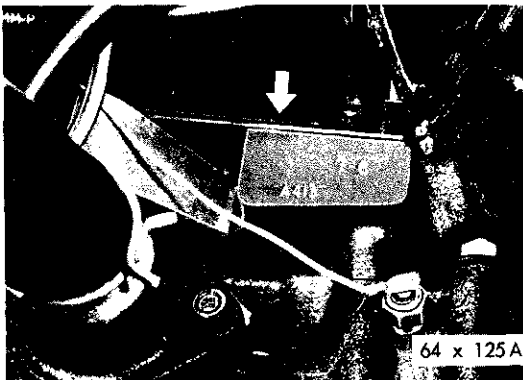


Fig. 3—Engine Number

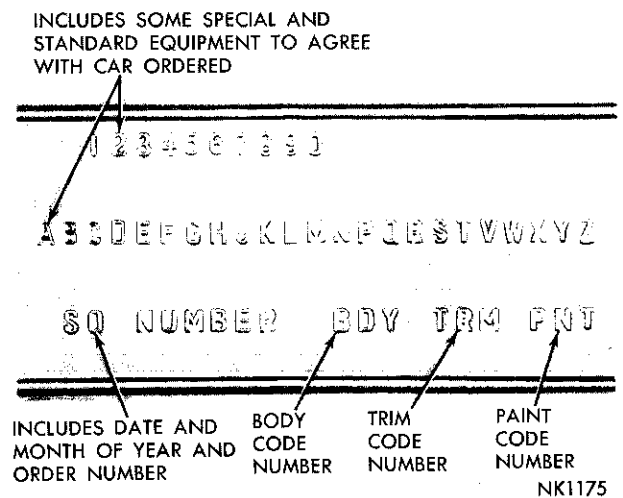


Fig. 4—Body Number

6 INTRODUCTION AND GENERAL SPECIFICATIONS

GENERAL DATA AND SPECIFICATIONS

Body Styles	Starting Serial No.	Chrysler AC-1	Chrysler AC-2 AC-2 300L	Chrysler AC-3	Imperial AY-1
4 Dr. Sedan, 4 Dr. Hard Top 2 Dr. Hard Top, Convertible	C153100001	Newport			
4 Dr. Hard Top, 2 Dr. Hard Top	C253100001		300		
4 Dr. Sedan, 4 Dr. Hard Top	C353100001			New Yorker	
2 Dr. Hard Top, Convertible	C453100001		300L		
Station Wagon	C553100001	Newport			
Station Wagon	C753100001			New Yorker	
Police Car	C953100001	Newport			
4 Dr. Hard Top, Convertible	Y253100001				Crown
4 Dr. Hard Top	Y353100001				Le Baron
Wheelbase	All Models Except Sta. Wgn. Station Wagon	124.0" 121.0"	124.0"	124.0" 121.0"	129"
Tread (Front)	All Models	62"	62"	62"	61.8"
Tread (Rear)	All Models	60.7"	60.7"	60.7"	61.7"
Length with Bumper	All Models Except Sta. Wgn. Station Wagon	218.2" 219.0"	218.2" —	218.2" 219.0"	
Width with Bumper	All Models	79.5"	79.5"	79.5"	80.0"
Rear Axle with 3-Speed or 4-Speed Manual Transmission	All Models	3.23" 3.23"	3.23" 3.23"	—	—
Rear Axle with TorqueFlite Transmission	All Models	2.76"	3.23"	2.76"	2.93"
Tire Size	All Models Except Sta. Wgn. Station Wagon C-300L	8.25 x 14 8.55 x 14	8.55 x 14 8.55 x 14	8.55 x 14 9.00 x 14	9.15 x 15