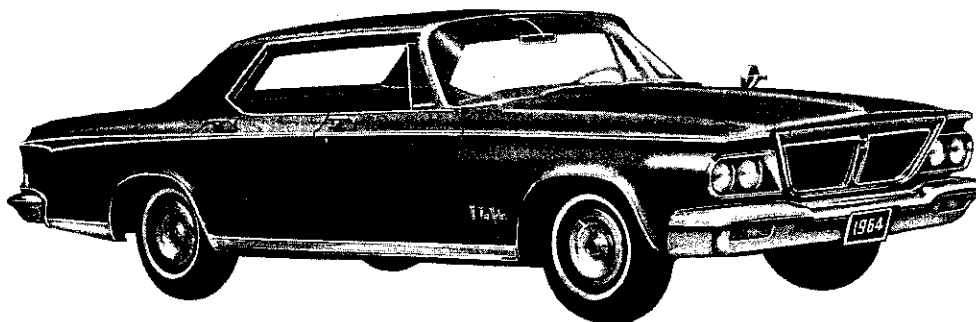
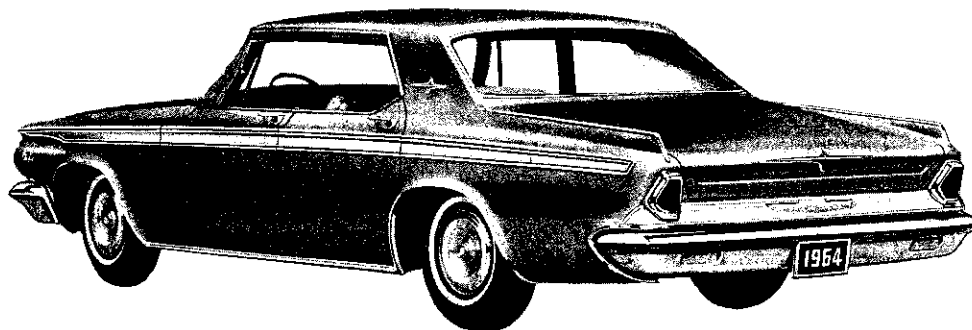


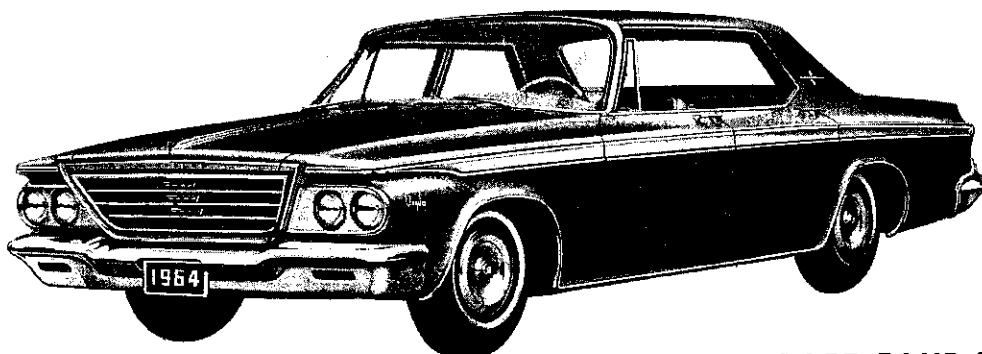
VY-1 IMPERIAL CROWN TWO-DOOR HARDTOP



VC-3 NEW YORKER FOUR-DOOR HARDTOP



VC-2-300 FOUR-DOOR HARDTOP



VC-1 NEWPORT FOUR-DOOR HARDTOP

Fig. 1—1964 Imperial and Chrysler Models

FACTORY CONTACT

The following outline of the proper procedure to use in obtaining assistance or advice on any matter applying to Service will insure your inquiries receiving prompt attention and handling. Make certain those members of your organization who might have the occasion to contact either your Regional Office or the factory, are thoroughly familiar with this procedure. All matters pertaining in any way to Warranty Service Claims, or of a technical nature, should be handled by you direct with your Regional Service Office. When in doubt as to the proper procedure to follow in the handling of a claim or complaint, prompt results can be obtained through a letter, telegram or phone call to your Regional Service Office—making certain to include all necessary information. If the aid of a Service Representative is necessary, the Regional Office will arrange for his contact as promptly as circumstances permit.

Letters or telegrams to the Regional Service Office should be confined to one subject only and should include the following information:

Car Serial Number	Owner's Name
Date of Sale	Mileage

Complete description of difficulty, corrective action taken, your recommendations as to what should be done and the reason for so doing.

Include Paint and Trim Code Numbers where finish, upholstery, body or sheet metal is involved, and estimate of net cost of repairs.

CHRYSLER-PLYMOUTH DIVISION

With the exception of orders for parts or parts literature, all requests for Imperial, Chrysler, Plymouth or Valiant Service literature such as Service Bulletins, Service Manuals, Owner Manuals, Time Schedules, W.S.C's or other Chrysler—Plymouth Division Service literature, should be addressed to:

(Letters)	(Telegrams)
Chrysler Corporation	Chrysler - Plymouth Division
Chrysler - Plymouth Division	Attention,
Service Department	(Name of person to whom sent)
P.O. Box 1658	WUX
Detroit 31, Michigan	Detroit, Michigan

(Phone) 822-4700

NOTE: Please make certain to include the Code WUX on all telegrams to the Chrysler-Plymouth Division as this insures delivery direct to our Teleprint Room thus eliminating delay.

MASTER TECHNICIANS SERVICE CONFERENCE

All correspondence concerning enrollment in the M.T.S.C. Program, issuance of awards, orders for additional material, the return of reports, or any other matters relating to this program, should be addressed to:

Master Technician Service Conference
 Chrysler Corporation Training Center
 P.O. Box 2119
 Detroit 31, Michigan
 (Phone) 539-3000

PARTS DIVISION

General

ALL orders for parts or accessories, emergency or otherwise, should be forwarded direct to your source of supply or to the parts plant listed below serving the area in which you are located.

To insure your receiving the parts required by you more promptly, close attention should be given to the procedure listed under "Ordering Information" and "Your Parts Orders" in the introductory front part of all MoPar Parts Lists and Price Lists. Particularly where parts are ordered for a specific car, it is very essential that your order include the car serial and engine numbers, and in the case of body parts, the body number.

CENTER LINE, MICHIGAN

Mail Address:
Chrysler Motors Corporation
P.O. Box 300
Center Line, Michigan
Telephone - 539-300

NEWARK, DELAWARE

Mail Address:
Chrysler Motors Corporation
South College Avenue
P.O. Box 120
Newark, Delaware
Telephone - Endicott 8-2521

SAN LEANDRO, CALIFORNIA

Mail Address:
Chrysler Motors Corporation
1955 Davis Street
San Leandro, California
Telephone - Neptune 8-6200

ATLANTA, GEORGIA

Mail Address:
Chrysler Motors Corporation
1150 Murphy Avenue, S. W.
P. O. Box 10786
Atlanta 10, Georgia
Telephone - Plaza 5-2531

KANSAS CITY, KANSAS

Mail Address:
Chrysler Motors Corporation
Funston & Chrysler Roads
Kansas City 15, Kansas
Telephone - Fairfax 1-3300

Parts Division Literature

Request for Parts Division literature such as Parts Books, Parts Price Lists, Parts Bulletins, etc., should be forwarded direct to:

Chrysler Motors Corporation
P.O. Box 1718
Detroit 31, Michigan
Attention: Parts Catalog Department

Shortage of Accessories or Other Equipment on New Cars

Before placing an order for missing accessories, other parts or equipment on new cars received, examine the vehicle for the presence of a "back order" notice, which if present, will be found attached to the bracket for the inside rear view mirror. Such back-ordered short items will be shipped from the assembly plant as soon as stock is available, and should not be ordered from the Parts Division.

Emergency Orders—Car Down or Truck Down

1. When parts are not immediately available from your local MoPar source of supply, TELEPHONE, TELEGRAPH or AIR MAIL your order to:
 - a. PARTS PLANT SERVING YOUR AREA for all parts coded "V", "F", "M" and "P". Use Parts Order Form No. 81-670-0139.
 - b. FACTORY PARTS PLANT AT CENTER LINE for all parts coded "D" . . . and orders for "D" parts combined with "V", "F", "M" and "P" parts required for an individual service job. Use Parts Order Form No. 81-670-0190 (Supersedes D-16712).
 - c. Quantities ordered should not exceed actual requirements for vehicle out of service. **Always supply car, vehicle serial number and Truck Parts Availability Number (1960-62 Models) in addition to Vehicle Number.**
2. Identify orders as "Emergency Car Down" or "Emergency Truck Down".
3. List part numbers in numerical sequence. Use your dealer code number on all orders. Assign only one order number to the order regardless of size.
4. "V", "F", "M" and "P" parts will be shipped transportation charges collect. "D" parts will be shipped transportation prepaid when "Normal Prepaid Transportation" is specified; shipped collect when "Premium Transportation" is specified.

1964 MODELS

Chrysler Newport	(8-Cyl.) VC-1	Chrysler 300-K	(8-Cyl.) VC-4
Chrysler 300	(8-Cyl.) VC-2	Imperial Crown	(8-Cyl.) VY-1
Chrysler New Yorker	(8-Cyl.) VC-3	Imperial LeBaron	(8-Cyl.) VY-1

VEHICLE AND ENGINE NUMBERS

VEHICLE NUMBER - The vehicle number (Serial Number) is located on a metal plate attached to the left front door body hinge pillar, as shown in Figure 2.

All vehicle numbers contain ten digits. The vehicle number is a code which tells the make of vehicle (1st digit), model of vehicle (2nd digit), year built (3rd digit), assembly plant (4th digit), and vehicle sequence number (last six digits) starting with 100001.

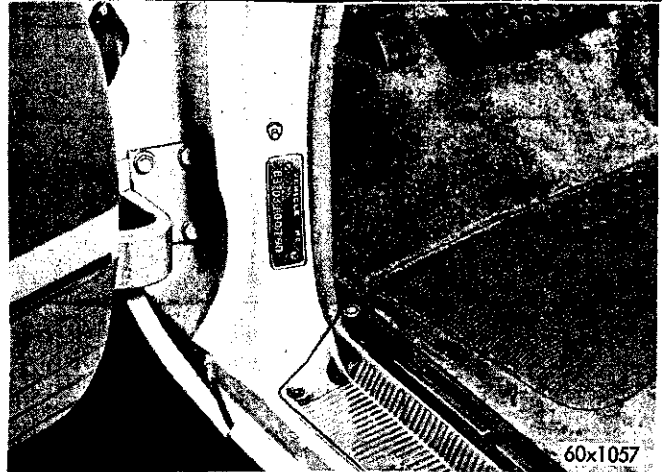


Fig. 2—Vehicle Number

1st Digit Make of Vehicle	2nd Digit Model of Vehicle	3rd Digit Year Built	4th Digit Assembly Plant
8. Chrysler	Chrysler 1. Newport 2. 300	Imperial 2. Crown 3. LeBaron	3. Chrysler Jefferson-Detroit
9. Imperial	3. New Yorker 5. Newport (Town and Country) 7. New Yorker (Town and Country) 8. New Yorker—Salon	1964	

ENGINE NUMBER - The engine number is stamped on the boss on the top side of the cylinder block just back of the water pump, as shown in Figure 3.

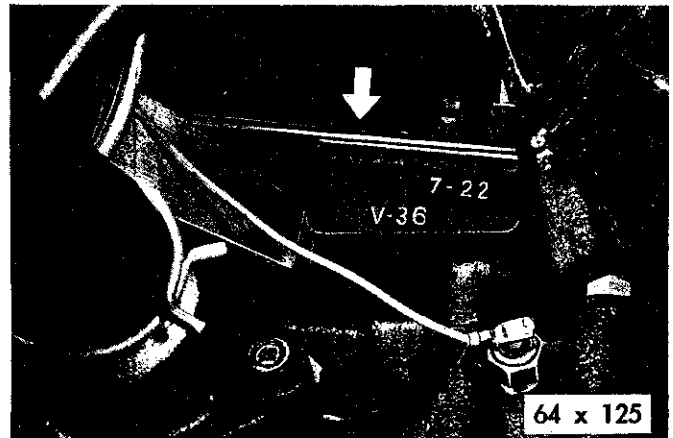


Fig. 3—Engine Number

BODY PLATE NUMBER - The body plate number is located on the engine side of the cowl just above the master cylinder on Imperial Models, as shown in Figure 4. On Chrysler Models, the plate is located above the top hinge of the drivers side door.

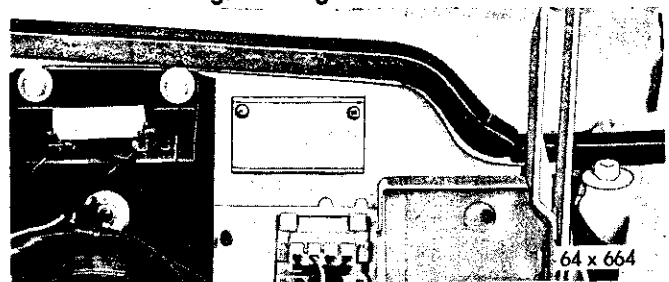


Fig. 4—Body Number

6 INTRODUCTION AND GENERAL SPECIFICATIONS

GENERAL DATA AND SPECIFICATIONS

Item	Body Style	Starting Vehicle Numbers		1964 Models	
		VC-1	VC-2 *VC-4	VC-3	VY-1
	Four Door Sedan	81 43 100001	Newport		
	Town and Country	85 43 100001	Newport		
	Four Door Hard Top	82 43 100001		300	
	Two Door Hard Top	84 43 100001		C-300K	
	Four Door Sedan	83 43 100001		New Yorker	
	Town and Country	87 43 100001		New Yorker	
	Four Door Hard Top	92 43 100001			Imp. Crown
	Four Door Hard Top	93 43 100001			Imp. LeBaron
Wheelbase	All Models		122"	122"	122"
Tread (Front)	All Models		61.0"	61.0"	61.0"
Tread (Rear)	All Models		59.7"	59.7"	59.7"
Length with Bumper	All Models except Town and Country Town and Country		215.3" 219.4"	215.3" —	215.3" 219.4"
Width with Bumper	All Models		80.0"	80.0"	80.0"
Rear Axle with 3-Speed or 4-Speed Manual Transmission	All Models		3.23"	3.23"	—
Rear Axle with TorqueFlite Transmission	All Models		2.76"	3.23"	2.76"
Tire Size	All Models except Town and Country Town and Country C-300K		8.00x14 8.00x14	8.00x14 — 8.00x14	8.50x14 8.50x14 —