

INDEX TO INFORMATION PAGES

	PAGE NO.
ABBREVIATIONS . . . . .	INF-19
ALPHABETICAL INDEX . . . . .	INF-20
COLOR CODED OR MIXED PART NUMBERS . . . . .	INF-23
COLORED PAGE IDENTIFICATION . . . . .	INF-21
ENGINE IDENTIFICATION NUMBERS . . . . .	INF-18
HOW TO LOCATE PARTS . . . . .	INF-22
ILLUSTRATIONS . . . . .	INF-20
INTERFILING REVISION PAGES . . . . .	INF-22
MODEL CODES . . . . .	INF- 3
MODEL SPECIFICATIONS . . . . .	INF- 6
VALIANT	
PLYMOUTH	
DART	
DODGE	
880	
CHRYSLER	
IMPERIAL	
NUMERICAL INDEX . . . . .	INF-20
ORDERING INFORMATION . . . . .	INF-23
PAGE NUMBERING . . . . .	INF-21
PAINT AND TRIM SPECIFICATIONS . . . . .	INF- 8
VALIANT	
PLYMOUTH	
DART	
DODGE	
880	
CHRYSLER	
IMPERIAL	
PARTS CATALOG REVISION SERVICE . . . . .	INF-22
PARTS PACKAGES . . . . .	INF-21
PART TYPE CODE SYSTEM . . . . .	INF-21
SERIAL NUMBERS . . . . .	INF- 4
SPECIFYING INFORMATION . . . . .	INF-22
STANDARD PARTS . . . . .	INF-21
SYMBOLS USED IN THIS CATALOG . . . . .	INF-18

**GENERAL INFORMATION**

This publication contains parts information for 1964 Plymouth, Valiant, Dodge, Dart, Chrysler and Imperial Passenger Cars. In the event replacement parts which are not listed are required, they may be ordered by description or Part Type Code, giving the model and vehicle serial number to which they apply.

Trim items, such as seat backs, seat cushions and trimming materials are listed in Group 23 - Interior Trim and should be ordered by part number, description and car vehicle serial number. A special Trim Order Form is provided to expedite trim material orders.

A Numerical and an Alphabetical Index are provided.

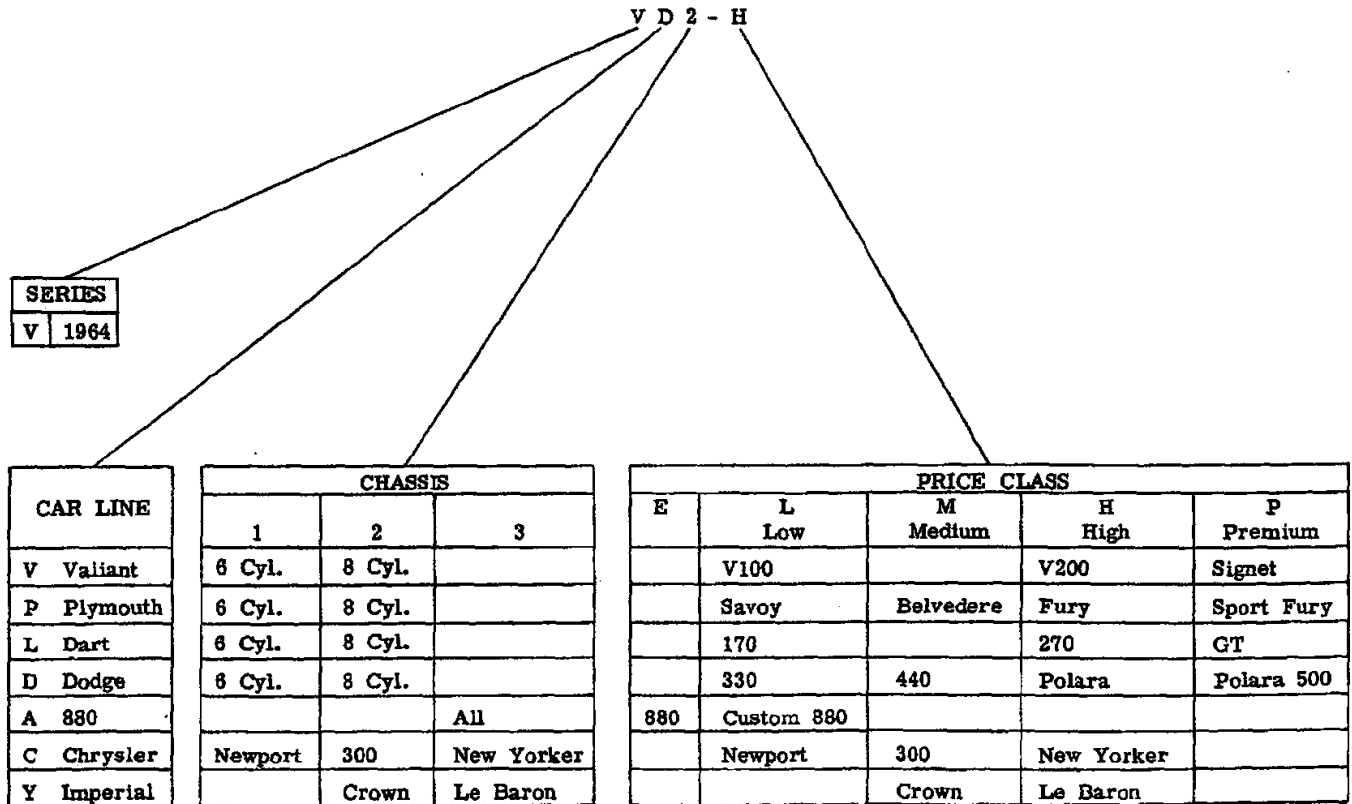
The use of this Parts Catalog and the arrangement of information therein is explained in the General Information Section.

**1964 PASSENGER CAR MODEL CODES**

Throughout this catalog "Model Codes" are used where it is necessary to clarify the model application of listed part numbers.

Complete model codes are described below, however, the series letter (V for 1964) is not repeated in the text of the catalog.

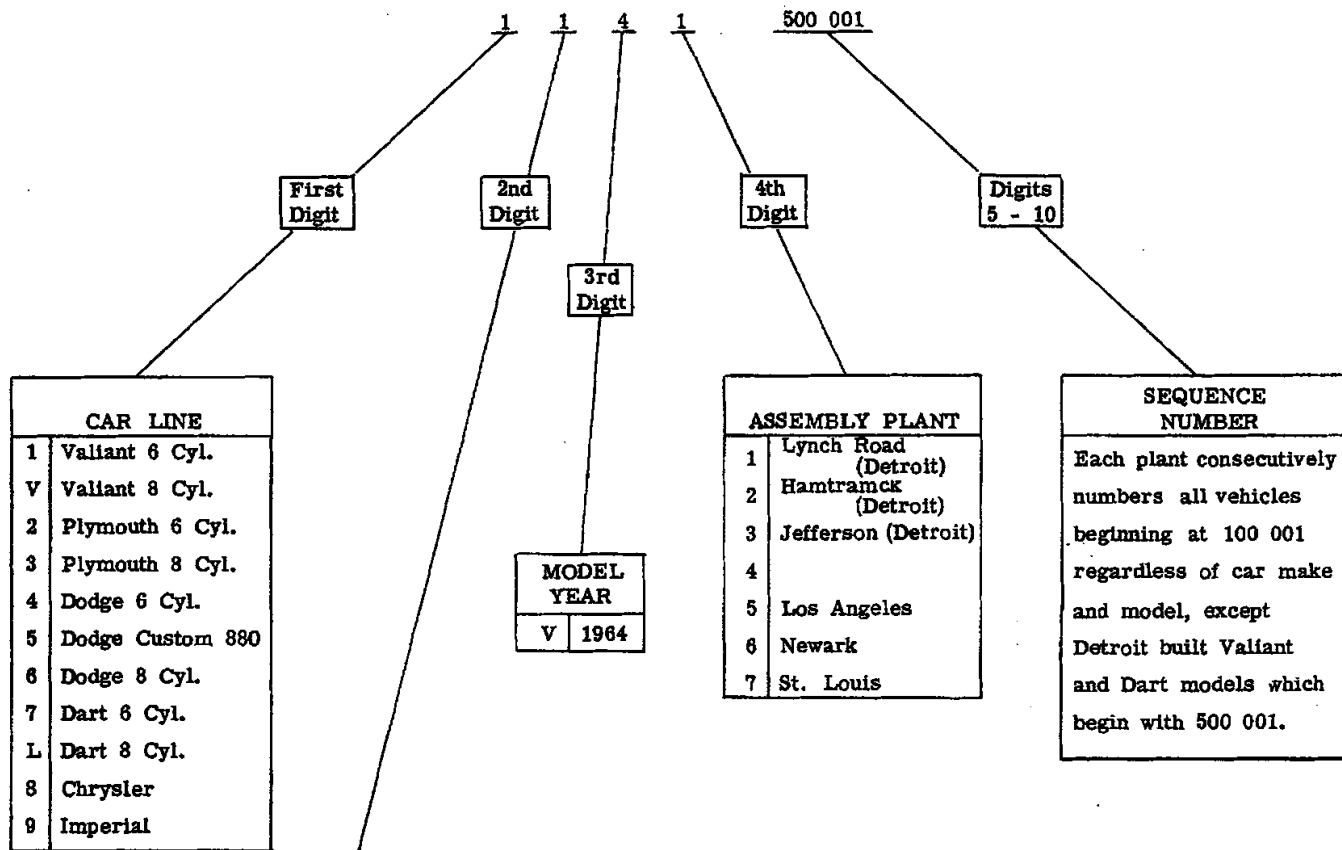
Example: (VD2-H, below) -- 1964, Dodge, 8 Cylinder, Polara.



## 1964 PASSENGER CAR SERIAL NUMBERS

All assembly plants use a uniform method for assigning vehicle serial numbers. This number consists of 10 digits which may be interpreted as indicated below.

Example: Valiant, V100, 1964, produced at Detroit Lynch Road Assembly Plant, first vehicle built.

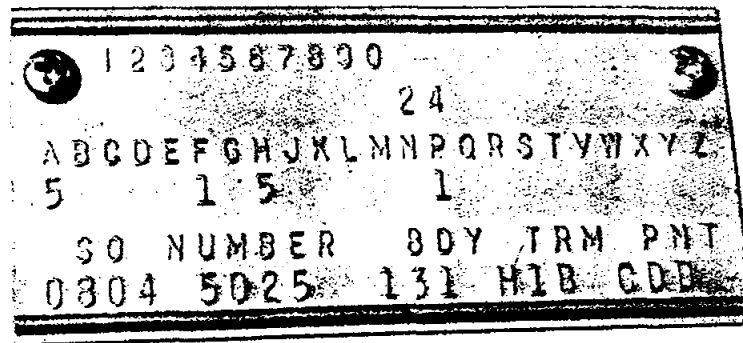


MODELS							
	VALIANT	PLYMOUTH	DODGE	DART	DODGE 880	CHRYSLER	IMPERIAL
1	V100	Savoy	330	170	880	Newport	
2		Belvedere	440		Custom 880	300	Crown
3	V200	Fury	Polara	270		New Yorker	Le Baron
4	Signet 200	Sport Fury	Polara 500	GT		300K	
5	V100 Station Wagon	Savoy Station Wagon	330 Station Wagon	170 Station Wagon	880 Station Wagon	Newport Station Wagon	
6		Belvedere Station Wagon	440 Station Wagon		Custom 880 Station Wagon		
7	V200 Station Wagon	Fury Station Wagon		270 Station Wagon		New Yorker Station Wagon	
8		Taxi	Taxi			New Yorker Salon	
9		Police	Police		Police	Police	
0		Fleet	Fleet				

1964 PASSENGER CAR SERIAL NUMBERS - CONT'D

BODY CODE PLATE

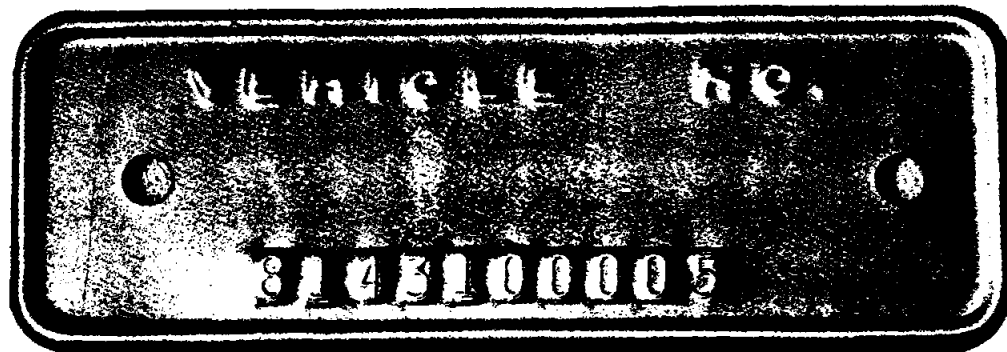
The location of the Body Code Plate varies with each car line. This plate contains the schedule number, body code, trim code, and paint code of the vehicle to which it is attached.



19x7940

VEHICLE SERIAL NUMBER PLATE

The Vehicle Serial Number Plate is located on the left front door hinge pillar ("A" Post). Always specify the vehicle serial number when ordering parts by description.



19x7941

For a description of vehicle serial numbers refer to the section covering "1964 Passenger Car Serial Numbers".

## 1964 MODEL SPECIFICATIONS

MODEL CODE	MODEL	CYL.	1963 MODEL CODE	BEGINNING CAR SERIAL NUMBERS			
				DETROIT	LOS ANGELES	NEWARK	ST. LOUIS
VALIANT							
VV1-L	V100	6	TV1-L	1142-500001	1145-100001	1146-100001	1147-100001
VV1-L	V100 Station Wagon	6	TV1-L	1542-500001	1545-100001	1546-100001	1547-100001
VV1-H	V200	6	TV1-H	1342-500001	1345-100001	1346-100001	1347-100001
VV1-H	V200 Station Wagon	6	TV1-H	1742-500001	1745-100001	1746-100001	1747-100001
VV1-P	Signet 200	6	TV1-P	1442-500001	1445-100001	1446-100001	1447-100001
VV2-L	V100	8	-	V142-500001	V145-100001	V146-100001	V147-100001
VV2-L	V100 Station Wagon	8	-	V542-500001	V545-100001	V546-100001	V547-100001
VV2-H	V200	8	-	V342-500001	V345-100001	V346-100001	V347-100001
VV2-H	V200 Station Wagon	8	-	V742-500001	V745-100001	V746-100001	V747-100001
VV2-P	Signet 200	8	-	V442-500001	V445-100001	V446-100001	V447-100001

## PLYMOUTH

VP1-L	Savoy	6	TP1-L	2141-100001	2145-100001	2146-100001	2147-100001
VP1-L	Savoy Station Wagon	6	TP1-L	2541-100001	2545-100001	2546-100001	2547-100001
VP1-M	Belvedere	6	TP1-M	2241-100001	2245-100001	2246-100001	2247-100001
VP1-H	Fury	6	TP1-H	2341-100001	2345-100001	2346-100001	2347-100001
VP2-L	Savoy	8	TP2-L	3141-100001	3145-100001	3146-100001	3147-100001
VP2-L	Savoy Station Wagon	8	TP2-L	3541-100001	3545-100001	3546-100001	3547-100001
VP2-M	Belvedere	8	TP2-M	3241-100001	3245-100001	3246-100001	3247-100001
VP2-M	Belvedere Station Wagon	8	TP2-M	3841-100001	3845-100001	3846-100001	3847-100001
VP2-H	Fury	8	TP2-H	3341-100001	3345-100001	3346-100001	3347-100001
VP2-H	Fury Station Wagon	8	TP2-H	3741-100001	3745-100001	3746-100001	3747-100001
VP2-P	Sport Fury	8	TP2-P	3441-100001	3445-100001	3446-100001	3447-100001

## DART

VL1-L	170	6	TL1-L	7142-500001	7145-100001	7146-100001	7147-100001
VL1-L	170 Station Wagon	6	TL1-L	7542-500001	7545-100001	7546-100001	7547-100001
VL1-H	270	6	TL1-H	7342-500001	7345-100001	7346-100001	7347-100001
VL1-H	270 Station Wagon	6	TL1-H	7742-500001	7745-100001	7746-100001	7747-100001
VL1-P	GT	6	TL1-P	7442-500001	7445-100001	7446-100001	7447-100001
VL2-L	170	8	-	L142-500001	L145-100001	L146-100001	L147-100001
VL2-L	170 Station Wagon	8	-	L542-500001	L545-100001	L546-100001	L547-100001
VL2-H	270	8	-	L342-500001	L345-100001	L346-100001	L347-100001
VL2-H	270 Station Wagon	8	-	L742-500001	L745-100001	L746-100001	L747-100001
VL2-P	GT	8	-	L442-500001	L445-100001	L446-100001	L447-100001

## 1964 MODEL SPECIFICATIONS - CONT'D

MODEL CODE	MODEL	CYL.	1963 MODEL CODE	BEGINNING CAR SERIAL NUMBERS			
				DETROIT	LOS ANGELES	NEWARK	ST. LOUIS
<b>DODGE</b>							
VD1-L	330	6	TD1-L	4142-100001	4145-100001	4146-100001	4147-100001
VD1-L	330 Station Wagon	6	TD1-L	4542-100001	4545-100001	4546-100001	4547-100001
VD1-M	440	6	TD1-M	4242-100001	4245-100001	4246-100001	4247-100001
VD1-H	Polara	6	TD1-H	4342-100001	4345-100001	4346-100001	4347-100001
VD2-L	330	8	TD2-L	6142-100001	6145-100001	6146-100001	6147-100001
VD2-L	330 Station Wagon	8	TD2-L	6542-100001	6545-100001	6546-100001	6547-100001
VD2-M	440	8	TD2-M	6242-100001	6245-100001	6246-100001	6247-100001
VD2-M	440 Station Wagon	8	TD2-M	6642-100001	6645-100001	6646-100001	6647-100001
VD2-H	Polara	8	TD2-H	6342-100001	6345-100001	6346-100001	6347-100001
VD2-P	Polara 500	8	TD2-P	6442-100001	6445-100001	6446-100001	6447-100001

## 880

VA3-E	880	8	TA3-E	5143-100001			
VA3-E	880 Station Wagon	8	TA3-E	5543-100001			
VA3-L	Custom 880	8	TA3-L	5243-100001			
VA3-L	Custom 880 Station Wagon	8	TA3-L	5643-100001			

## CHRYSLER

VC1-L	Newport	8	TC1-L	8143-100001			
VC1-L	Newport Station Wagon	8	TC1-L	8543-100001			
VC2-M	300	8	TC2-M	8243-100001			
VC2-300K	300K	8	TC2-300J	8443-100001			
VC3-H	New Yorker	8	TC3-H	8343-100001			
VC3-H	New Yorker Station Wagon	8	TC3-H	8743-100001			
VC3-H	New Yorker Salon	8	TC3-H	8843-100001			

## IMPERIAL

VY1-M	Crown	8	TY1-M	9243-100001			
VY1-H	Le Baron	8	TY1-H	9343-100001			

PAINTS AND TRIMS - VALIANT

SOLID COLORS	PAINT CODES	V-100						V-200						SIGNET 200					
		2 Door Sedan 4 Door Sedan			Station Wagon			2 Door Sedan 4 Door Sedan Station Wagon			4 Door Sedan * Convertible (Std.) Station Wagon *			2 Door Hardtop Convertible					
		Cloth & Vinyl			All Vinyl			Cloth & Vinyl			All Vinyl			All Vinyl					
		Blue	Tan	Red	Blue	Tan	Red	Blue	Tan	Turq. Red	Blue	Tan	Turq. Red	Blue	Tan	Red	Black		
B Valiant Black	BB1	L1B	L1T	L1R	L4B	L4T	L4R	H1B	H1T	H1Q	H1R	H4B	H4T	H4Q	H4R	P4B	P4T	P4R	P4X
C Valiant Light Blue	CC1	L1B			L4B			H1B				H4B				P4B			P4X
D Valiant Med. Blue Metallic	DD1	L1B			L4B			H1B				H4B				P4B			P4X
E Valiant Dark Blue Metallic	EE1	L1B			L4B			H1B				H4B				P4B			P4X
J Valiant Light Turquoise	JJ1		L1T		L4T				H1Q				H4Q						P4X
K Valiant Med. Turquoise Met.	KK1		L1T		L4T				H1Q				H4Q						P4X
M Valiant Med. Gray Met.	MM1	L1B		L1R	L4R		L4R	H1B			H1R	H4B		H4R	P4B		P4R	P4X	
P Valiant Red	PP1			L1R			L4R				H1R			H4R			P4R	P4X	
T Signet Royal Red +	TT1																P4R	P4X	
W Valiant White	WW1	L1B	L1T	L1R	L4B	L4T	L4R	H1B	H1T	H1Q	H1R	H4B	H4T	H4Q	H4R	P4B	P4T	P4R	P4X
X Valiant Light Tan	XX1		L1T		L4T				H1T				H4T				P4T		P4X
Y Valiant Med. Tan Metallic	YY1		L1T		L4T				H1T				H4T				P4T		P4X

\* All Vinyl Trim on V-200 4-Door Sedan and Station Wagon is an extra cost option. Please see Confidential Price Bulletin.  
+ Signet Exclusive.

TWO-TONE COLORS (EXTRA COST) TOP COLOR/BASIC COLOR	PAINT CODES	V-100						V-200						
		2 Door Sedan 4 Door Sedan			Station Wagon			2 Door Sedan 4 Door Sedan Station Wagon			4 Door Sedan * Station Wagon *			
		Cloth & Vinyl			All Vinyl			Cloth & Vinyl			All Vinyl			
		Blue	Tan	Red	Blue	Tan	Red	Blue	Tan	Turq. Red	Blue	Tan	Turq. Red	
Valiant Light Blue/Valiant Med. Blue Metallic	CD2	L1B			L4B			H1B				H4B		
Valiant Med. Blue Metallic/Valiant Light Blue	DC2	L1B			L4B			H1B				H4B		
Valiant Med. Blue Met./Valiant Dark Blue Met.	DE2	L1B			L4B			H1B				H4B		
Valiant White/Valiant Med. Blue Metallic	WD2	L1B			L4B			H1B				H4B		
Val. Light Turquoise/Val. Med. Turquoise Met.	JK2									H1Q				H4Q
Val. Med. Turquoise Met./Val. Light Turquoise	KJ2									H1Q				H4Q
Valiant White/Valiant Med. Turquoise Metallic	WK2									H1Q				H4Q
Valiant White/Valiant Red	WP2			L1R			L4R				H1R			H4R
Valiant Light Tan/Valiant Medium Tan Metallic	XY2		L1T				L4T			H1T				H4T
Valiant Med. Tan Metallic/Valiant Light Tan	YX2		L1T				L4T			H1T				H4T
Valiant White/Valiant Med. Tan Metallic	WY2		L1T				L4T			H1T				H4T

NOTE: Two-tone colors are not available on Signet. On Signet 2 Door Hardtop order All-Vinyl Roof, code 695 or 696, if two-tone effect is desired.

**BODY COLORS - PLYMOUTH**

On Two Tone combinations the second color shown is the lower or basic body color and must be used in selecting the trim with the exception of PW2, where the top color P should be used in selecting the trim.

**ALL MODELS**

SOLID COLOR CARS		CODE
B	Ebony	BB1
C	Light Blue	CC1
D	Medium Blue Metallic	DD1
E	Dark Blue Metallic	EE1
H	Sandalwood Metallic	HH1
K	Medium Turquoise Metallic	KK1
L	Dark Turquoise Metallic	LL1
M	Medium Gray Metallic	MM1
P	Ruby	PP1
V	Chestnut Metallic	VV1
W	White	WW1
X	Light Tan	XX1
Y	Medium Tan Metallic	YY1

**SAVOY AND BELVEDERE**

TWO TONE *	CODE
Light Blue/Medium Blue Metallic	CD2
Med. Blue Metallic/Dark Blue Metallic	DE2
White/Medium Blue Metallic	WD2
White/Medium Turquoise Metallic	WK2
White/Dark Turquoise Metallic	WL2
White/Medium Gray Metallic	WM2
White/Ruby	WP2
Ruby/White	PW2
White/Light Tan	WX2
White/Medium Tan Metallic	WY2

**FURY**

TWO TONE *	CODE
White/Medium Blue Metallic	WD2
White/Sandalwood Metallic	WH2
White/Medium Turquoise Metallic	WK2
White/Dark Turquoise Metallic	WL2
White/Medium Gray Metallic	WM2
White/Ruby	WP2
White/Chestnut Metallic	VW2
White/Medium Tan Metallic	WY2
Ruby/White	PW2

**SPORT FURY**

TWO TONE *	CODE
White/Ebony	WB2
White/Medium Blue Metallic	WD2
Medium Blue Metallic/Dark Blue Metallic	DE2
White/Sandalwood Metallic	WH2
White/Medium Turquoise Metallic	WK2
White/Dark Turquoise Metallic	WL2
White/Ruby	WP2
White/Chestnut Metallic	VW2
Sandalwood Metallic/Chestnut Metallic	HV2
Ruby/White	PW2

NOTE: Fury Body Sweep Color matches roof color on Two Tones, on Solid Color Cars Fury Body Sweep is White or harmonizes with interior trim.

**TRIM OPTIONS**

Specify trim code desired on your car order.

MODEL	Interior Trim	BASIC CAR COLOR																				
		EBONY	LIGHT BLUE	MEDIUM BLUE	DARK BLUE	SANDALWOOD	MEDIUM TURQUOISE	DARK TURQUOISE	MEDIUM GRAY	RUBY	CHESTNUT	WHITE	LIGHT TAN	MEDIUM TAN								
		B	C	D	E	H	K	L	M	P	V	W	X	Y								
SAVOY	2 Door Sedan 4 Door Sedan <i>Cloth &amp; Vinyl</i>	Blue	L1B	L1B	L1B	L1B				L1T	L1T			L1B								
		Tan													L1T	L1T	L1T					
		Red	L1R											L1R	L1R							
	Station Wagon <i>All Vinyl</i>	Blue	L4B	L4B	L4B	L4B									L4B							
		Tan							L4T	L4T					L4T	L4T	L4T					
		Red	L4R											L4R	L4R							
BELVEDERE	2 Door Sedan 4 Door Sedan 2 Door Hardtop <i>Cloth &amp; Vinyl</i>	Blue	M1B	M1B	M1B	M1B								M1B								
		Tan													M1T	M1T	M1T					
		Turquoise	M1Q						M1Q	M1Q					M1Q							
		Red	M1R											M1R	M1R							
	Station Wagon <i>All Vinyl</i>	Blue	M4B	M4B	M4B	M4B									M4B							
		Tan													M4T	M4T	M4T					
FURY	4 Door Sedan 2 Door Hardtop 4 Door Hardtop <i>Cloth &amp; Vinyl</i>	Blue	H1B	H1B	H1B	H1B								H1B								
		Tan													H1T	H1T	H1T					
		Turquoise	H1Q							H1Q	H1Q				H1Q							
		Red	H1R											H1R	H1R							
		Copper						H1U							H1U	H1U						
	4 Door Sedan* Station Wagon <i>All Vinyl</i>	Blue	H4B	H4B	H4B	H4B									H4B							
		Tan													H4T	H4T	H4T					
		Turquoise	H4Q							H4Q	H4Q				H4Q							
	2 Door Hardtop* 4 Door Hardtop* Convertible <i>All Vinyl</i>	Red	H4R											H4R	H4R							
		Blue	H4B	H4B	H4B	H4B								H4B								
		Turquoise	H4Q							H4Q	H4Q				H4Q							
		Red	H4R											H4R	H4R							
SPORT FURY	Blue		P4B	P4B	P4B									P4B								
	Turquoise								P4Q	P4Q				P4Q								
	Red	P4R <sup>+</sup>											P4R	P4R								
	Copper							P4U					P4U	P4U								
	Black	P4X		P4X <sup>o</sup>					P4X				P4X	P4X <sup>o</sup>		H4U	H4U	P4X	H4X	H4X	H4X	

<sup>o</sup> This option available at extra cost. Please see Confidential Price Bulletin.  
<sup>+</sup> N/A with WD2, WP2, or PW2 on Fury.    <sup>o</sup> N/A with PW2, or WD2 on Sport Fury.    <sup>+</sup> N/A with WB2 on Sport Fury.



**PAINT AND TRIM SELECTIONS**  
**DART 170 AND 270**

SOLID COLORS (STD.)	P CODES	TWO-TONE COLORS Roof Color Basic Color (Extra Cost) NA CONV.	P CODES	LOW LINE - 170								HIGH LINE - 270														
				2 Door Sedan 4 Door Sedan				Station Wagon				2 Door Sedan 4 Door Sedan				Convertible and Station Wagon			4 Door Sedan (Extra Cost)			Convertible				
				Cloth & Vinyl				All Vinyl				Cloth & Vinyl				All Vinyl			All Vinyl			Top Color				
				L1B	L1T	L1R	L1Q	L5B	L5T	L5R	L5Q	H1B	H1T	H1R	H1Q	H4B	H4T	H4R	H4Q	H4B	H4T	H4R	396	397	398	
Blue	Tan	Red	Turq	Blue	Tan	Red	Turq	Blue	Tan	Red	Turq	Blue	Tan	Red	Turq	Blue	Tan	Red	Blk	Wht	Blue					
Light Blue	CC1	Light Blue Medium Blue	CD2	L1B				L5B				H1B				H4B				H4B				396	397	398
Medium Blue	DD1	White Medium Blue	WD2	L1B				L5B				H1B				H4B				H4B				396	397	398
Dark Blue	EE1			L1B				L5B				H1B				H4B				H4B				396	397	398
Aqua	JJ1	Aqua Med. Turq. Met.	JK2				L1Q				L5Q				H1Q				H4Q					396	397	
Med. Turq. Metallic	KK1	White Med. Turq. Met.	WK2				L1Q				L5Q				H1Q				H4Q					396	397	
Dark Green	LL1						L1Q				L5Q				H1Q				H4Q					396	397	
Beige	XX1	Beige Tan	XY2	L1T				L5T				H1T				H4T				H4T				396	397	
Tan	YY1	White Tan	WY2	L1T				L5T				H1T				H4T				H4T				396	397	
Ivory	SS1			L1T				L5T				H1T				H4T				H4T				396	397	
Red	PP1	White Red	WP2			L1R				L5R				H1R				H4R				H4R		396	397	
Black	BB1			L1B	L1T	L1R	L1Q	L5B	L5T	L5R	L5Q	H1B	H1T	H1R	H1Q	H4B	H4T	H4R	H4Q	H4B	H4T	H4R	396	397	398	
White	WW1			L1B	L1T	L1R	L1Q	L5B	L5T	L5R	L5Q	H1B	H1T	H1R	H1Q	H4B	H4T	H4R	H4Q	H4B	H4T	H4R	396	397	398	

\*With Blue Trim Only.

**DART GT (Standard Paint Combinations)**

SADDLE	BASIC BODY	P CODES	R E V E R S E	Convertible 2 Door Hardtop Trim Selections					Convertible			
				All Vinyl					Top Color			
				P4B	P4T	P4R	P4Y	P4X	396	397	398	
Blue	Tan	Red	Gold	Black	Black	White	Blue					
MEDIUM BLUE	LIGHT BLUE	*DC3	CD3	P4B							397	398
MEDIUM BLUE	DARK BLUE	DE3		P4B							397	398
MEDIUM BLUE	WHITE	*DW3	WD3	P4B							397	398
TAN	BEIGE	YX3			P4T				396	397		
WHITE	TAN	*WY3	YW3		P4T					397		
BLACK	TAN	BY3			P4T			P4X	396			
WHITE	RED	*WP3	PW3			P4R					397	
BLACK	RED	*BP3	PB3			P4R		P4X	396			
ANNIVERSARY GOLD	IVORY	*ZS3	*SZ3				P4Y		396	397		
BLACK	ANNIVERSARY GOLD	*BZ3	ZB3				P4Y	P4X	396			
ANNIVERSARY GOLD	WHITE	ZW3					P4Y			397		
BLACK	AQUA	BJ3						P4X	396			
BLACK	MEDIUM TURQUOISE METALLIC	BK3						P4X	396			
WHITE	BLACK	*WB3	BW3					P4X	396	397		
BLACK	IVORY	BS3						P4X	396			
BLACK	DARK GREEN	BL3						P4X	396			

\* These Paint Combinations are also available reversed.  
To order, use the Code in the Reverse Code Column.  
^Black Top N/A with Paint SZ3.

(REV. 12-63)

PAINT AND TRIM SELECTIONS

DODGE 330

SOLID PAINT COLORS	P A I N T C O D E S	TWO-TONE PAINT COLORS	P A I N T C O D E S	TRIM SELECTIONS									
				Available All 330 Models Except Station Wagons				330 Station Wagons Only					
				Cloth and Vinyl				All Vinyl					
				L1B	L1T	L1Q	L1R	L4B	L4T	L4Q	L4R		
Blue	Tan	Turq.	Red	Blue	Tan	Turq.	Red						
Roof Color	Body Color	Roof Color	Body Color										
Light Blue	CC1	Medium Blue Dark Blue	DE2	L1B				L4B					
Medium Blue	DD1	White Medium Blue	WD2	L1B				L4B					
Dark Blue	EE1	Light Blue Medium Blue	CD2	L1B				L4B					
Beige	XX1	White Tan	WY2		L1T				L4T				
Tan	YY1	Tan Beige	YX2		L1T				L4T				
Aqua	JJ1	Medium Turquoise Metallic Dark Green	KL2			L1Q					L4Q		
Medium Turquoise Metallic	KK1	White Medium Turquoise Metallic	WK2			L1Q					L4Q		
Dark Green	LL1	Aqua Medium Turquoise Metallic	JK2			L1Q					L4Q		
Red	PP1	White Red	WP2				L1R						L4R
Black	BB1	Red White	PW2				L1R						L4R
White	WW1			L1B	L1T	L1Q	L1R	L4B	L4T	L4Q	L4R		
Gray	MM1						L1R						L4R

DODGE 440

PAINT SELECTIONS (Std.)		R E V E R S E C O D E S	R E M O V E R C O D E S	TWO-TONE PAINT SELECTIONS (Extra Cost)		P A I N T C O D E S	TRIM SELECTIONS												
SWEEP COLOR	BASIC BODY COLOR			SWEEP COLOR	BASIC BODY COLOR		Available All 440 Models Except Station Wagons					440 Station Wagons Only							
							Cloth and Vinyl					All Vinyl							
							M1B	M1T	M1Q	M1R	M1Y	M4B	M4T	M4Q	M4R	M4Y			
Blue	Tan	Turq.	Red	Gold	Blue	Tan	Turq.	Red	Gold										
White	Dark Blue	EE1		White	Dark Blue	WE2	M1B					M4B							
White	Medium Blue	DD1	WW1	White	Medium Blue	WD2	M1B					M4B							
Medium Blue	Light Blue	CC1		Medium Blue	Light Blue	DC2	M1B					M4B							
White	Tan	YY1	WW1	White	Tan	WY2		M1T						M4T					
Tan	Beige	XX1		Tan	Beige	YX2		M1T						M4T					
White	Dark Green	LL1		White	Dark Green	WL2			M1Q							M4Q			
White	Med. Turq. Metl.	KK1	WW1	White	Med. Turq. Metl.	WK2			M1Q							M4Q			
Med. Turq. Metl.	Aqua	JJ1		Med. Turq. Metl.	Aqua	KJ2			M1Q							M4Q			
White	Red	PP1	WW1	White	Red	WP2				M1R									M4R
White	Anniversary Gold	ZZ1	WW1	White	Anniversary Gold	WZ2					M1Y								M4Y
Anniversary Gold	Ivory	SS1		Anniversary Gold	Ivory	ZS2					M1Y								M4Y
White	Gray	MM1		Red	White	PW2				M1R									M4R
White	Black	BB1									M1Y								M4Y
Red	Black	BB1								M1R									M4R

**PAINT AND TRIM SELECTIONS  
DODGE POLARA**

SOLID PAINT COLORS (STD.)	P C A O I D N E T S	TWO-TONE PAINT COLORS Roof Color Body Color (Extra Cost) NA Convertible	P C A O I D N E T S	TRIM SELECTIONS										CONVERTIBLE TOPS - COLORS			
				Available All 4 Door Sedans Only					Convertibles and Hardtops Only								
				Cloth and Vinyl					All Vinyl								
				H1B	H1T	H1Q	H1R	H1Y	H4B	H4T	H4Q	H4R	H4Y	H4X	396	397	398
Blue	Tan	Turq.	Red	Gold	Blue	Tan	Turq.	Red	Gold	Black	Black	White	Blue				
Light Blue	CC1	Medium Blue Dark Blue	DE2	H1B						H4B				H4X	396	397	398
Medium Blue	DD1	White Medium Blue	WD2	H1B						H4B				H4X	396	397	398
Dark Blue	EE1	Light Blue Medium Blue	CD2	H1B						H4B				H4X	396	397	398
Beige	XX1	White Tan	WY2		H1T					H4T				H4X	396	397	
Tan	YY1	Tan Beige	YX2		H1T					H4T				H4X	396	397	
Aqua	JJ1	Med. Turq. Metl. Dark Green	KL2			H1Q				H4Q				H4X	396	397	
Med. Turq. Metallic	KK1	White Med. Turq. Metl.	WK2			H1Q				H4Q				H4X	396	397	
Dark Green	LL1	Aqua Med. Turq. Metl.	JK2			H1Q				H4Q				H4X	396	397	
Red	PP1	White Red	WP2				H1R				H4R			H4X	396	397	
		Red White	PW2				H1R				H4R			H4X	396	397	
Anniversary Gold	ZZ1	White Anniversary Gold	WZ2					H1Y				H4Y	H4X	396	397		
Ivory	SS1	Anniversary Gold Ivory	ZS2					H1Y				H4Y	H4X	396	397		
Black	BB1						H1R	H1Y			H4R	H4Y	H4X	396	397		
White	WW1			H1B	H1T	H1Q	H1R	H1Y	H4B	H4T	H4Q	H4R	H4Y	H4X	396	397	*398
Gray	MM1						H1R				H4R		H4X	396	397		

\* With Blue Trim Only

\*\* H4X N/A with EE1 or DE2

**DODGE POLARA 500 SPORT PACKAGE**

SOLID PAINT COLORS (STD.)	P C A O I D N E T S	TWO-TONE PAINT COLORS Roof Color Body Color (Extra Cost) NA Convertible	P C A O I D N E T S	TRIM SELECTIONS						CONVERTIBLE TOPS - COLORS			
				Convertible and Hardtop									
				All Vinyl - Bucket Seats									
				P4B	P4T	P4Q	P4R	P4Y	P4X	396	397	398	
Blue	Tan	Turq.	Red	Gold	Black	Black	White	Blue					
Light Blue	CC1	Medium Blue Dark Blue	DE2	P4B						P4X	396	397	398
Medium Blue	DD1	White Medium Blue	WD2	P4B						P4X	396	397	398
Dark Blue	EE1	Light Blue Medium Blue	CD2	P4B						P4X	396	397	398
Beige	XX1	White Tan	WY2		P4T					P4X	396	397	
Tan	YY1	Tan Beige	YX2		P4T					P4X	396	397	
Aqua	JJ1	Med. Turq. Metl. Dark Green	KL2			P4Q				P4X	396	397	
Med. Turq. Metl.	KK1	White Med. Turq. Metl.	WK2			P4Q				P4X	396	397	
Dark Green	LL1	Aqua Med. Turq. Metl.	JK2			P4Q				P4X	396	397	
Red	PP1	White Red	WP2				P4R			P4X	396	397	
		Red White	PW2				P4R			P4X	396	397	
Anniversary Gold	ZZ1	White Anniversary Gold	WZ2					P4Y	P4X	396	397		
Ivory	SS1	Anniversary Gold Ivory	ZS2					P4Y	P4X	396	397		
Black	BB1						P4R	P4Y	P4X	396	397		
White	WW1			P4B	P4T	P4Q	P4R	P4Y	P4X	396	397		*398
Gray	MM1						P4R		P4X	396	397		

\* With Blue Trim Only

\*\* P4X - N/A with EE1 or DE2

(REV. 12-63)

**PAINT AND TRIM SELECTIONS**

**DODGE 880**  
(Models 513-556-557 only)

SOLID PAINT COLORS (STD.)	P A I N T S	TWO-TONE PAINT COLORS  Roof Color Body Color (Extra Cost)	P A I N T S	TRIM SELECTIONS			
				Available 880 Models Only (513 - 556 - 557)			
				Cloth and Vinyl			
				E1B Blue	E1T Tan	E1Q Turq.	E1Y Gold
Light Blue	CC1	Medium Blue Dark Blue	DE2	E1B			
Medium Blue	DD1	White Medium Blue	WD2	E1B			
Dark Blue	EE1	Light Blue Medium Blue	CD2	E1B			
Beige	XX1	White Tan	WY2		E1T		
Tan	YY1	Tan Beige	YX2		E1T		
Light Turquoise Metallic	KK1	Light Turquoise Metallic Dark Green	KL2			E1Q	
Dark Green	LL1	White Light Turquoise Metallic	WK2			E1Q	
Dark Red	TT1	White Dark Red	WT2		E1T		
Anniversary Gold	ZZ1	White Anniversary Gold	WZ2				E1Y
Ivory	SS1	Anniversary Gold Ivory	ZS2				E1Y
Black	BB1					E1Q	E1Y
White	WW1			E1B	E1T	E1Q	E1Y
Gray	MM1			E1B			

**DODGE CUSTOM 880**  
(Models 522-523-524-525-568 and 569 only)

SOLID PAINT COLORS (STD.)	P A I N T S	TWO-TONE PAINT COLORS Roof Color Body Color (Extra Cost)	P A I N T S	TRIM SELECTIONS										CONVERTIBLE TOPS - COLORS			
				2 Door Hardtop and 4 Door Sedan (522 - 523)					4 Door Hardtop, Convertible and Hardtop Wagons (524, 525, 568 & 569)								
				Cloth and Vinyl					All Vinyl								
				L1B Blue	L1T Tan	L1Q Turq.	L1R Red	L1Y Gold	L4B Blue	L4T Tan	L4Q Turq.	L4R Red	L4Y Gold	396 Black	397 White	398 Blue	
Light Blue	CC1	Medium Blue Dark Blue	DE2	L1B						L4B					396	397	398
Medium Blue	DD1	White Medium Blue	WD2	L1B						L4B					396	397	398
Dark Blue	EE1	Light Blue Medium Blue	CD2	L1B						L4B					396	397	398
Beige	XX1	White Tan	WY2		L1T					L4T					396	397	
Tan	YY1	Tan Beige	YX2		L1T					L4T					396	397	
Lt. Turq. Metallic	KK1	Lt. Turq. Metallic Dark Green	KL2			L1Q				L4Q					396	397	
Dark Green	LL1	White Lt. Turq. Metallic	WK2			L1Q				L4Q					396	397	
Dark Red	TT1						L1R				L4R				396	397	
Anniversary Gold	ZZ1	White Anniversary Gold	WZ2					L1Y				L4Y			396	397	
Ivory	SS1	Anniversary Gold Ivory	ZS2					L1Y				L4Y			396	397	
Black	BB1					L1Q	L1R	L1Y			L4Q	L4R	L4Y		396	397	
White	WW1			L1B	L1T	L1Q	L1R	L1Y	L4B	L4T	L4Q	L4R	L4Y	396	397		*398
Gray	MM1	White Dark Red	WT2				L1R					L4R		396	397		

\* With Blue Trim Only.

(REV. 12-63)

SOLID COLOR CARS - PAINT AND TRIM OPTIONS

Specify Trim Code Number desired on your car orders.

MODEL	BASIC CAR COLOR																			
	FORMAL BLACK	WEDGE-WOOD	CHRYSLER BLUE	MONARCH BLUE	PINE MIST	SEQUIA GREEN	SILVER TURQUOISE	ROYAL TURQUOISE	MADISON GRAY	ROSEWOOD	ROYAL RUBY	ROMAN RED	EMBASSY + GOLD	PERLAN WHITE	DUNE BEIGE	SABLE TAN				
	BB1	CC1	DD1	EE1	FF1	GG1	KK1	LL1	MM1	OO1	PP1	TT1	UU1	VV1	XX1	YY1				
NEWPORT	4 DOOR SEDAN Cloth and Vinyl	Blue	L1B	L1B	L1B	L1B				L1B						L1B				
		Green	L1F				L1F	L1F									L1F			
		Tan	L1T					L1T				L1T	L1T				L1T	L1T	L1T	
		Mauve	L1M								L1M	L1M	L1M				L1M			
		Turquoise	L1Q					L1Q	L1Q								L1Q			
		White & Black	L1N	L1N	L1N	L1N	L1N	L1N	L1N	L1N	L1N	L1N	L1N				L1N	L1N	L1N	
		Blue	L2B	L2B	L2B	L2B				L2B							L2B			
		Green	L2F				L2F	L2F									L2F			
		Tan	L2T					L2T				L2T	L2T				L2T	L2T	L2T	
		Mauve	L2M								L2M	L2M	L2M				L2M			
		Turquoise	L2Q					L2Q	L2Q								L2Q			
		4 DOOR HARDTOPS (Avail. only w/Airfoam Sts.) Code 413) All Vinyl	Blue	L4B	L4B	L4B	L4B			L4B							L4B			
		White & Black	L4N	L4N	L4N	L4N	L4N	L4N	L4N	L4N	L4N	L4N				L4N	L4N	L4N		
		Red	L4R						L4R		L4R	L4R				L4R	L4R			
		Blue	L4B	L4B	L4B	L4B			L4B							L4B				
		Tan	L4T				L4T				L4T	L4T				L4T	L4T	L4T		
		White & Black	L4N	L4N	L4N	L4N	L4N	L4N	L4N	L4N	L4N	L4N				L4N	L4N	L4N		
		Red	L4R						L4R		L4R	L4R				L4R	L4R			
		Turquoise	L4Q					L4Q	L4Q							L4Q				
		Blue	L4B	L4B	L4B	L4B			L4B							L4B				
		Tan	L4T				L4T				L4T	L4T				L4T	L4T	L4T		
		White & Black	L4N	L4N	L4N	L4N	L4N	L4N	L4N	L4N	L4N	L4N				L4N	L4N	L4N		
		Red	L4R						L4R		L4R	L4R				L4R	L4R			
		Turquoise	L4Q					L4Q	L4Q							L4Q				
300 & 300K	4 DOOR HARDTOP Cloth and Vinyl Bucket Seats	Blue	M1B	M1B	M1B	M1B			M1B							M1B				
		Tan	M1T				M1T				M1T	M1T				M1T	M1T	M1T		
		White & Black	M1N	M1N	M1N	M1N	M1N	M1N	M1N	M1N	M1N	M1N				M1N	M1N	M1N		
		Mauve	M1M							M1M	M1M	M1M				M1M				
		Blue	M4B	M4B	M4B	M4B			M4B							M4B				
		Tan	M4T				M4T				M4T	M4T				M4T	M4T	M4T		
		White	M4W	M4W	M4W	M4W	M4W	M4W	M4W	M4W	M4W	M4W	M4W			M4W	M4W	M4W		
		Red	M4R							M4R	M4R	M4R				M4R	M4R			
		Black	M4X	M4X	M4X	M4X	M4X	M4X	M4X	M4X	M4X	M4X	M4X			M4X	M4X	M4X		
		1 Dr. H.T., 4 Dr. H.T. & Convertible Leather Bucket Seats *	White	M8W	M8W	M8W	M8W	M8W	M8W	M8W	M8W	M8W	M8W			M8W	M8W	M8W		
			Black	M8X	M8X	M8X	M8X	M8X	M8X	M8X	M8X	M8X	M8X			M8X	M8X	M8X		
	NEW YORKER	4 DOOR SEDAN 4 DOOR HARDTOP Cloth and Vinyl	Blue	H1B	H1B	H1B	H1B			H1B							H1B			
		Green	H1F				H1F	H1F								H1F				
		Tan	H1T				H1T				H1T	H1T				H1T	H1T	H1T		
		White & Black	H1N	H1N	H1N	H1N	H1N	H1N	H1N	H1N	H1N	H1N				H1N	H1N	H1N		
		Mauve	H1M							H1M	H1M	H1M				H1M				
		Turquoise	H1Q					H1Q	H1Q							H1Q				
		Blue	H4B	H4B	H4B	H4B			H4B							H4B				
		White	H4W	H4W	H4W	H4W	H4W	H4W	H4W	H4W	H4W	H4W	H4W			H4W	H4W	H4W		
		Red	H4R							H4R		H4R	H4R			H4R	H4R			
		Turquoise	H4Q					H4Q	H4Q							H4Q				
		T & C WAGON Cloth & Vinyl Bucket Seats	White & Black	H2N	H2N	H2N	H2N	H2N	H2N	H2N	H2N	H2N	H2N			H2N	H2N	H2N		
			Blue	H4B	H4B	H4B	H4B			H4B						H4B				
		Tan	H4T				H4T				H4T	H4T			H4T	H4T	H4T			
		White	H4W	H4W	H4W	H4W	H4W	H4W	H4W	H4W	H4W	H4W			H4W	H4W	H4W			
		Red	H4R						H4R		H4R	H4R			H4R	H4R				
SALON	4 DOOR HARDTOP Cloth and Leather Trim	Blue	H7B	H7B	H7B	H7B										H7B				
		Gold	H7L				H7L									H7L	H7L			
	4 DOOR HARDTOP Leather Trim *	Blue	H3B	H3B	H3B	H3B										H3B				
		Gold	H3L				H3L									H3L	H3L			

NOTE: Bucket Seats have individual adjustment and will have a Fixed Center Cushion and Fold Down Arm Rest except when Console is ordered. Console is standard on 300K.

All Bucket Seats have reclining seat back on passenger side.

\* This option available at extra cost. Please see Confidential Price Bulletin.

▲ Only Colors available for Salon.

+ Exclusive for Salon

**TWO-TONE PAINT\* AND TRIM OPTIONS**  
**TOWN AND COUNTRY WAGONS ONLY**

		TRIMS									
CAR COLORS TOP COLOR/BASIC COLOR	PAINT CODE	NEWPORT				NEW YORKER					
		All Vinyl				Cloth & Vinyl White & Black	All Vinyl				
		Blue	Tan	White & Black	Red		Blue	Tan	White	Red	
PERSIAN WHITE/FORMAL BLACK	WB2	L4B	L4T	L4N	L4R	H2N	H4B	H4T	H4W	H4R	
CHRYSLER BLUE/WEDGEWOOD	DC2	L4B					H4B				
PERSIAN WHITE/CHRYSLER BLUE	WD2	L4B		L4N		H2N	H4B		H4W		
CHRYSLER BLUE/MONARCH BLUE	DE2	L4B					H4B				
PERSIAN WHITE/PINE MIST	WF2			L4N		H2N			H4W		
PERSIAN WHITE/SEQUOIA GREEN	WG2		L4T	L4N		H2N		H4T	H4W		
PERSIAN WHITE/SILVER TURQUOISE	WE2			L4N		H2N			H4W		
PERSIAN WHITE/ROYAL TURQUOISE	WL2			L4N		H2N			H4W		
PERSIAN WHITE/MADISON GRAY	WM2	L4B		L4N	L4R	H2N	H4B		H4W	H4R	
PERSIAN WHITE/ROSEWOOD	WO2			L4N		H2N			H4W		
PERSIAN WHITE/ROYAL RUBY	WR2		L4T	L4N	L4R	H2N		H4T	H4W	H4R	
PERSIAN WHITE/ROMAN RED	WT2		L4T	L4N	L4R	H2N		H4T	H4W	H4R	
FORMAL BLACK/PERSIAN WHITE	BW2			L4N		H2N			H4W		
CHRYSLER BLUE/PERSIAN WHITE	DW2	L4B					H4B				
ROMAN RED/PERSIAN WHITE	TW2				L4R					H4R	
DUNE BEIGE/PERSIAN WHITE	KW2		L4T		L4R			H4T		H4R	
SABLE TAN/PERSIAN WHITE	YW2		L4T					H4T			
PERSIAN WHITE/DUNE BEIGE	WX2		L4T	L4N	L4R	H2N		H4T	H4W	H4R	
SABLE TAN/DUNE BEIGE	YX2		L4T					H4T			
PERSIAN WHITE/SABLE TAN	WY2		L4T	L4N		H2N		H4T	H4W		
DUNE BEIGE/SABLE TAN	XY2		L4T					H4T			

**NEW YORKER 4 DOOR SEDAN AND HARDTOP ONLY**  
CANOPY MOULDING (CODE 635) - MANDATORY WITH TWO-TONE PAINT

CAR COLORS TOP COLOR/BASIC COLOR	PAINT CODE	4 DOOR SEDAN AND HARDTOP						4 DOOR HARDTOP			
		Cloth and Vinyl						All Vinyl* Bucket Seats			
		Blue	Green	Tan	White & Black	Mauve	Turq.	Blue	White	Red	Turq.
MADISON GRAY/FORMAL BLACK	MB2	H1B			H1N			H4B	H4W		
CHRYSLER BLUE/WEDGEWOOD	DC2	H1B						H4B			
MONARCH BLUE/CHRYSLER BLUE	ED2	H1B						H4B			
CHRYSLER BLUE/MONARCH BLUE	DE2	H1B						H4B			
SEQUOIA GREEN/PINE MIST	GF2		H1F								
PINE MIST/SEQUOIA GREEN	FG2		H1F								
ROYAL TURQUOISE/SILVER TURQ.	LK2						H1Q				H4Q
SILVER TURQUOISE/ROYAL TURQ.	KL2						H1Q				H4Q
FORMAL BLACK/MADISON GRAY	BM2	H1B			H1N			H4B	H4W		
ROYAL RUBY/ROSEWOOD	RO2					H1M					
ROSEWOOD/ROYAL RUBY	OR2					H1M					
FORMAL BLACK/ROMAN RED	BT2									H4R	
SABLE TAN/DUNE BEIGE	YX2			H1T							
DUNE BEIGE/SABLE TAN	YJ2			H1T							

\* These options are available at extra cost. Please see Confidential Price Bulletin.

SOLID COLOR CARS - PAINT AND TRIM OPTIONS

IMPERIAL

MODEL	BASIC CAR COLORS																				
	FORMAL BLACK	WEDGE-WOOD	NASSAU BLUE	MONARCH BLUE	PINE MIST	SEQUOIA GREEN	SILVER TURQUOISE	ROYAL TURQUOISE	MADISON GRAY	CHARCOAL GRAY	ROSEWOOD	ROYAL RUBY	IVORY	ROMAN RED	PERSIAN WHITE	DUNE BEIGE	SABLE TAN				
	BB1	CC1	DD1	EE1	FF1	GG1	KK1	LL1	MM1	NN1	OO1	RR1	SS1	TT1	WW1	XX1	YY1				
C R O W N	4 DOOR HARDTOP	Paint Codes																			
	Fabric and Quality Leather	Blue	M7B	M7B	M7B	M7B												M7B			
		Tan	M7T					M7T										M7T	M7T	M7T	
		White & Black	M7N	M7N	M7N		M7N		M7N	M7N	M7N		M7N	M7N	M7N	M7N	M7N	M7N	M7N	M7N	
		Mauve	M7M									M7M	M7M		M7M	M7M					
		Turquoise	M7Q					M7Q	M7Q									M7Q			
		Black & Gray	M7P							M7P	M7P					M7P	M7P				
		Green & Beige						M7H										M7H	M7H	M7H	
	4 DOOR HARDTOP	Blue	M3B	M3B	M3B	M3B												M3B			
		Red	M3R							M3R	M3R					M3R	M3R				
		White (Blue)		M3C	M3C	M3C												M3C			
		White (Red)														M3V	M3V				
		White (Black)	M3W				M3W	M3W	M3W	M3W	M3W	M3W	M3W	M3W	M3W	M3W	M3W	M3W	M3W	M3W	
		Black	M3X	M3X	M3X		M3X	M3X	M3X	M3X	M3X	M3X	M3X	M3X	M3X	M3X	M3X	M3X	M3X	M3X	
		Tan	M3T					M3T										M3T	M3T	M3T	
	Dark Green					M3F	M3F						M3F		M3F	M3F	M3F	M3F	M3F		
	COUPE	Individual Front Seats with Head Rests Fabric and Quality Leather	Blue	M8B	M8B	M8B	M8B											M8B			
			White & Black	M8N	M8N	M8N		M8N		M8N	M8N	M8N		M8N	M8N	M8N	M8N	M8N	M8N	M8N	
			Mauve	M8M								M8M	M8M		M8M	M8M					
			Turquoise	M8Q					M8Q	M8Q									M8Q		
			Green & Beige						M8H										M8H	M8H	M8H
	COUPE CONVERTIBLE	Individual Front Seats with Head Rests Quality Leather	Blue	M9B	M9B	M9B	M9B											M9B			
			Red	M9R						M9R	M9R					M9R	M9R				
			White (Blue)		M9C	M9C	M9C												M9C		
White (Red)																M9V	M9V				
White (Black)			M9W				M9W	M9W	M9W	M9W	M9W	M9W	M9W	M9W	M9W	M9W	M9W	M9W	M9W		
Black			M9X	M9X	M9X		M9X	M9X	M9X	M9X	M9X	M9X	M9X	M9X	M9X	M9X	M9X	M9X	M9X		
Tan			M9T					M9T										M9T	M9T	M9T	
Dark Green					M9F	M9F						M9F		M9F	M9F	M9F	M9F				
L E B A R O N	4 DOOR HARDTOP	Fabric and Quality Leather	Blue	H7B	H7B	H7B	H7B											H7B			
			Tan	H7T					H7T										H7T	H7T	H7T
			Mauve	H7M								H7M	H7M			H7M	H7M				
			Black & Gray	H7P						H7P	H7P	H7P	H7P				H7P	H7P			
			Green & Beige						H7H										H7H	H7H	H7H
	4 DOOR HARDTOP	Quality Leather *	Blue	H3B	H3B	H3B	H3B												H3B		
			Red	H3R							H3R	H3R							H3R	H3R	
			White (Blue)		H3C	H3C	H3C												H3C		
			White (Red)														H3V	H3V			
			White (Black)	H3W				H3W	H3W	H3W	H3W	H3W	H3W	H3W	H3W	H3W	H3W	H3W	H3W	H3W	
Black	H3X	H3X	H3X		H3X	H3X	H3X	H3X	H3X	H3X	H3X	H3X	H3X	H3X	H3X	H3X	H3X				
Dark Green					H3F	H3F						H3F		H3F	H3F	H3F	H3F				

\* These options are available at extra cost. Please see Confidential Price Bulletin.  
( ) Color of Components - Steering Wheel, Carpets, and Instrument Panel.





**ENGINE IDENTIFICATION NUMBERS**

The following chart provides examples of identification numbers of all 1964 engines, and the location of the boss on which the engine number is stamped.

It should be noted the cubic inch displacement of all engines except the 300K 413 cubic inch engine can be determined from the identification number.

The last numerals of the identification numbers of all engines except the 318 cubic inch engine indicate the month and day the engine was built (examples on the chart assume a production date of August 1.) The "318" engine identification number concludes with a serial sequence number.

CYL.	ENGINE TYPE	CUBIC INCH DISPLACEMENT	EXAMPLE ENG. IDENTIFICATION NUMBER	IDENTIFICATION NUMBER BOSS LOCATION
6	G	170	V-17-8-1	Right side, front of block, below cylinder head
6	RG	225	V-22-8-1	
8	LA	273	V-273-11-20	Left side, front of block, below cylinder head
8	A	318	V-318-1001	Left side, front of block, below cylinder head
8	B	361	V-36-8-1	Right side, front of block, below ignition distributor
8	LB	383	V-38-8-1	
8	RB	413	V-41-8-1	Top, front of block, left of water pump
8 Chrysler 300K	RB	413	C-300K-8-1	
8	RB	426	11:1 Comp. Ratio TMP-426-2-8-1 12.5:1 Comp. Ratio TMP-HC-426-2-8-1	Left side, front of block, behind thermostat housing

**IMPORTANT**

Parts Division replacement engines are supplied with blank engine number bosses only. Dealers are governed by state law on the application of engine numbers. In states where license fees are based on displacement or taxable horsepower, it will be necessary to change vehicle registration if the new replacement engine differs from the one it replaces.

**SYMBOLS USED IN THIS CATALOG**

- \* Asterisks preceding part numbers indicate change or additions.
- Ⓟ Double boxes preceding part numbers indicate parts added and not previously published.
- ★ Stars in the "Per Car" column mean "use as required."
- ( ) Numerals in parenthesis, either alone or with the terms "See Note--", or "Note--", refer to notes located at the beginning of the sub-group in which they are found or at the bottom of the page on which they appear. These notes are used wherever necessary to clarify the model application of the parts to which they are referenced.

ABBREVIATIONS

Abbreviations as used throughout this catalog are interpreted as follows:

abs.	absorber	fast.	fastening, fastener
accel.	accelerator	fil. hd.	fillister head
acc.	accessory	fin.	finish
adj.	adjusting, adjustor, adjustable, adjustment	fl. hd.	flat head
alum.	aluminum	ft.	foot, feet
amp.	ampere	freq.	frequency
approx.	approximate, approximately	frt.	front
arm.	armature	gen.	generator
assy.	assembly	gov.	governor
as req.	as required	h/brake	hand brake
att.	attaching	hd.	head
AL	AutoLite	h/lamp	headlamp
auto.	automatic	hdls.	headless
aux.	auxiliary	h/lining	headlining
bal.	balance	htr.	heater
brg.	bearing	hex.	hexagon
B. E.	black enamel	hsg.	housing
brkt.	bracket	hydr.	hydraulic
br.	brass	ign.	ignition
bz.	bronze	in.	inch
blt.	built	incl.	inclusive, includes
bush.	bushing	ind.	indicator
ca.	cadmium	I. D.	inside diameter
Cal.	California	inst.	instrument, instruction
canc.	cancelled	ins.	insulating, insulation, insulator
cp.	candlepower	inter.	intermittently, intermediate
carb.	carburetor	j/block	junction block
C. I.	cast iron	kilo.	kilometer
ctr.	center	lea.	leather
C/L	Center Line	lt.	left
chamf.	chamfered	LHD	Left Hand Drive
chr.	chromium	L. H. thd.	Left Hand Thread
c/breaker	circuit breaker	lgh.	length
c/nut	clinch nut	lic.	license
comb.	combination	l/washer	lockwasher
compt.	compartment	L. A.	Los Angeles
comp.	complete, component	L. C.	low compression
con.	connecting, connection, connector	lwr.	lower
cont.	continued	M. I.	malleable iron
cop.	copper	manif.	manifold
ck.	countersunk	man.	manual
cu.	cubic	m/cyl.	master cylinder
cust.	custom	med.	medium
cyl.	cylinder	M. P. H.	miles per hour
defl.	deflector	mldg.	moulding
Det.	Detroit	mtg.	mounting
diag.	diagonal	neg.	negative
dia.	diameter	ni.	nickel
diaph.	diaphragm	No. or #.	number
diff.	differential	oper.	operating
dir.	directional	opp.	opposite
dist.	distributor, distributing	opt.	optional
div.	division	oz.	ounce
dom.	domestic	O. D.	outside diameter
d/r shaft.	double rocker shaft	O/S	oversize
elec.	electric	pkg.	package
elim.	eliminator	pkd.	parkerized
eng.	engine	park.	parking
equip.	equipment	p/lamp	parking lamp
etc.	et cetera	part.	partial, partition
Evans.	Evansville	P. or Pass.	passenger
exh.	exhaust	Penna.	Pennsylvania
Exp.	Export	pl.	pillar
ext.	extension	pln.	plain
F.	Fahrenheit	p/washer	plainwasher

## ABBREVIATIONS - CONT'D

pltd. . . . .	plated	S . . . . .	steel
pt. . . . .	point	strg. . . . .	steering
pos. . . . .	positive	stght. . . . .	straight
lbs. . . . .	pounds	supt. . . . .	support
prop. . . . .	propeller	synch. . . . .	synchronizer
qtr. . . . .	quarter	t/lamp . . . . .	tail lamp
rad. . . . .	radiator	t/plate . . . . .	tapping plate
rr. . . . .	rear	t/bolt . . . . .	tee-bolt
rec. . . . .	receiver	term. . . . .	terminal
refl. . . . .	reflector	T. . . . .	teeth
reg. . . . .	regulator	thd. . . . .	thread
reinf. . . . .	reinforcement	thk. . . . .	thick
rem. . . . .	remote	Tor. Cv. . . . .	Torque Converter
repl. . . . .	replacement	trans. . . . .	transmission
req. . . . .	required	tub. . . . .	tubular
ret. . . . .	retainer	U/Drive . . . . .	underdrive
R. P. M. . . . .	revolutions per minute	U/S. . . . .	undersize
rt. . . . .	right	univ. . . . .	universal
RHD . . . . .	Right Hand Drive	U. J. . . . .	universal joint
R.H. thd. . . . .	Right Hand Thread	vac. . . . .	vacuum
rd. . . . .	round	vent. . . . .	ventilator, ventilating
S. L. . . . .	San Leandro	vert. . . . .	vertical
sec. . . . .	section	v . . . . .	volt
s-fin. . . . .	semi-finished	vol. cont. . . . .	volume control
ser. . . . .	serial, service	w/strip. . . . .	weatherstrip
s.p. . . . .	shakeproof	whl. . . . .	wheel
sig. . . . .	signal	W. B. . . . .	wheelbase
s/r shaft. . . . .	single rocker shaft	w/house . . . . .	wheelhouse
speedo. . . . .	speedometer	w/lift . . . . .	window lift
spec. equip. . . . .	special equipment	w/shield . . . . .	windshield
sq. . . . .	square	w/ . . . . .	with
std. . . . .	standard	w/o . . . . .	without

## PASSENGER CAR BODY STYLES

4 D. Sed. . . . .	Four Door Sedan	4 D. Sta. Wgn. . . . .	Four Door Station Wagon
4 D. H. T. . . . .	Four Door Hardtop	2 D. Sed. . . . .	Two Door Sedan
Cv. Cp. . . . .	Convertible Coupe	2 D. H. T. . . . .	Two Door Hardtop
		4 D. H. T. Sta. Wgn. . . . .	Four Door Hardtop Station Wagon

## ILLUSTRATIONS

Illustrations are located at the beginning of each group. Parts are identified on the illustration by Noun Name and Part Type Code. The Part Type Code designation will serve as an index to locate the listing of the Group.

## ALPHABETICAL INDEX

Reference to any part by sub-group name is provided in the Alphabetical Index. This index indicates the Part Type Code, by means of which the listing can be quickly located.

## NUMERICAL INDEX

Reference to any part by part number is provided in the Numerical Index. This index indicates the Part Type Code.

## PARTS PACKAGES

Service Parts Packages, containing all parts needed for a specific service operation, are listed in their respective groups with related parts. The listing will show adaptability and model application. Often it becomes necessary to know just what parts are contained in a Service Package. To determine this, refer to the Service Package Section. This section contains a secondary listing of all Service Packages in this Parts Catalog together with a list of every component part of each package. Service Packages in this section are listed numerically by Part Type Code.

## STANDARD PARTS

Standard Parts such as bolts, nuts, etc., are listed under the major parts which they attach and are not coded. Standard Parts listed as Major Parts, such as fuses, bulbs, and bearings in the 100,000 part number series are assigned a Part Type Code and coded within the group in which they are listed.

A comprehensive listing of the most commonly used Standard Parts available in carton quantities will be found under Group 18.

## COLORED PAGE IDENTIFICATION

Yellow pages in Group 19 and Group 21 identifying Power Steering and Automatic Transmissions have been discontinued. Six and Eight Cylinder Engines, Manual and Power Steering, Manual and Automatic Transmission will list respective illustrations at the beginning of each section.

## PART TYPE CODE SYSTEM

To simplify the listing and location of individual parts, a system of Part Type Codes is used in this Parts Catalog.

To illustrate, a Type of Part will be indicated as:

2-03-3      KNUCKLE, w/BUSHING

This code is broken down as follows:

2-            Indicates the Major Group: "Group 2 -- Front Suspension"

-03-         Indicates the Sub Group: "03 -- Steering Knuckle"

-3            Indicates the Code for the specific name of the part: "Knuckle, w/Bushing"

Part Type Code 2-03-3 will always appear as "KNUCKLE, w/BUSHING."

## PAGE NUMBERING

Two-part page numbers are used throughout this catalog. The first part of the page designation indicates the major group or section. The second part indicates the actual page number in the group. For example:

1-1      indicates Group 1, Accessories, Page 1

2-1      indicates Group 2, Front Suspension, Page 1

In the maintenance of the Loose Leaf Parts Catalog Revision Service, it may become necessary to add information beyond the capacity of the page. In this event, an "A" page will be used. For example: If it becomes necessary, because of change, to add several part numbers to page 2-1 and space does not permit the addition, you will be given Page 2-1A. Page 2-1A should be filed immediately following page 2-1.

## HOW TO LOCATE PARTS

The Parts Catalog is divided into Groups. A tab index is provided to separate the Groups. To locate a part by name, see Alphabetical Index. To locate a part by number, see Numerical Index.

In cases where only the location of the part on the vehicle is known, refer to Tab Index to locate the Group in which the part is located. Then refer to the illustrations which appear at the beginning of that Group for identification of the part by name and Part Type Code. Parts are listed in Part Type Code sequence within the Group and reference to the proper code will determine the part number.

## SPECIFYING INFORMATION

The following information is included in this Parts Catalog:

- |   |  |
|---|--|
| <ol style="list-style-type: none"> <li>1. Part Type Code</li> <li>2. Part Name</li> <li>3. Part Number</li> <li>4. Model Application</li> <li>5. Quantity used per vehicle</li> <li>6. Effective points of changes by vehicle serial number, engine number and body number.</li> <li>7. Description and dimensions necessary for proper identification of parts.</li> </ol> | <ol style="list-style-type: none"> <li>8. Parts not previously listed in the Parts Catalog are designated by a double box (B) symbol preceding the part number.</li> <li>9. Under the column "No. Cyl." where the number of cylinders is not shown indicates part is for 6 and 8 cylinder. In the model column 3 conditions appear:               <ol style="list-style-type: none"> <li>A. Part Number</li> <li>B. Dashes</li> <li>C. Blank</li> </ol> </li> </ol> <p>Part number applies only where it appears in the column of the model.</p> |
|---|--|

## PARTS CATALOG REVISION SERVICE

Subscribers to the Chrysler Passenger Car Parts Catalog Revision Service will be provided with revision pages reflecting the latest parts information. Proper interfiling of revision pages will insure the subscriber a current catalog.

Included with each mailing of revision pages is a cover letter which outlines the contents of the particular revision. This letter summarizes the pages being eliminated, replaced, or added to each revised group. It is advised the letter be read carefully to avoid elimination of pages still current.

Periodically, certain changes require the immediate attention of catalog users. These changes, usually limited to a few part numbers, are provided revision service subscribers in PARTS INFORMATION BULLETINS. For maximum effectiveness, the bulletins should be filed immediately in their appropriate groups.

## INTERFILING REVISION PAGES

The importance of prompt interfiling of revision pages upon receipt cannot be stressed too greatly.

The following method for interfiling revised and new pages has been found to be efficient and time saving and is recommended for your use:

1. Insert the revised pages loosely in their proper location in the catalog.
2. Pull the locking trigger and lift the transfer bar with all pages down to the first loose revision sheet which has been inserted in its proper location.

### INTERFILING REVISION PAGES - CONT'D

3. Compare the revised (loose) page with the superseded page, noting changes and date.

NOTE: If you use the revised pages as part of your parts record-keeping system, note the changes in the revised (loose) page and post accordingly.

4. Remove superseded page.
5. Place revised page on post of transfer bar.
6. Replace transfer bar with all pages in place on bottom post.
7. Re-lock cover and your catalog is current and accurate.

### COLOR CODED OR MIXED PART NUMBERS

Appearing throughout this catalog are part numbers containing both letters and numbers. For example: 2000VB5. These are good serviceable part numbers. The combination of letters and numbers merely indicates the parts are keyed to the interior color of the vehicles on which they are used.

### ORDERING INFORMATION

NOTE - For information on how to order Chrysler parts, see General Information Section in Master Parts Price List

NOTES

Blank lined area for notes.