

1964 CHRYSLER INTERIOR TRIMS

NEW YORKER SALON 4 DOOR HARDTOP



BLUE..... Code H7B
*B, C, D, E, W



GOLD..... Code H7L
*B, G, U, W



BLUE..... Code H3B
*B, C, D, E, W



GOLD..... Code H3L
*B, G, W, U

LEATHER AND FABRIC

LEATHER (extra cost option)

*Letter indicates basic body color for planned harmony.

1964 CHRYSLER INTERIOR TRIMS

NEW YORKER 4 DOOR SEDAN AND 4 DOOR HARDTOP



BLUE..... Code H1B
*B, C, D, E, M, W



GREEN.... Code H1F
*B, F, G, W



TAN..... Code H1T
*B, G, R, T, W, X, Y

VINYL AND FABRIC

*Letter indicates basic body color for planned harmony.

1964 CHRYSLER INTERIOR TRIMS

300 2 DOOR HARDTOP, 4 DOOR HARDTOP AND CONVERTIBLE
300K 2 DOOR HARDTOP AND CONVERTIBLE

(For Convertible)
Top Materials, See
Last Page of Book.



WHITE.... Code M8W
*ALL EXCEPT U



BLACK..... Code M8X
*ALL EXCEPT U

LEATHER BUCKET SEATS (extra cost option)

*Letter indicates basic body color for planned harmony.

1964 CHRYSLER INTERIOR TRIMS

300 2 DOOR HARDTOP, 4 DOOR HARDTOP AND CONVERTIBLE
300K 2 DOOR HARDTOP AND CONVERTIBLE

(For Convertible
Top Materials, See
Last Page of Book.)



BLUE..... Code M4B
*B, C, D, E, M, W



TAN..... Code M4T
*B, G, R, T, W, X, Y



WHITE.... Code M4W
*ALL EXCEPT U



RED..... Code M4R
*B, M, R, T, W



BLACK.... Code M4X
*ALL EXCEPT U

VINYL AND VINYL (BUCKET SEATS)

*Letter indicates basic body color for planned harmony.

1964 CHRYSLER INTERIOR TRIMS

300 4 DOOR HARDTOP



BLUE..... Code M1B
*B, C, D, E, M, W



TAN..... Code M1T
*B, G, R, T, W, X, Y



WHITE and BLACK
..... Code M1N
*ALL EXCEPT U



MAUVE... Code M1M
*B, O, R, T, W

VINYL AND FABRIC (BUCKET SEATS)

*Letter indicates basic body color for planned harmony.

1964 CHRYSLER INTERIOR TRIMS

NEW YORKER TOWN AND COUNTRY WAGON



TAN Code H4T
*B, G, R, T, W, X, Y



WHITE and BLACK
. Code H2N
*ALL EXCEPT U

VINYL AND VINYL (BUCKET SEATS) VINYL AND FABRIC (BUCKET SEATS)

*Letter indicates basic body color for planned harmony.

1964 CHRYSLER INTERIOR TRIMS

NEW YORKER 4 DOOR HARDTOP (extra cost option)
TOWN AND COUNTRY WAGON (standard)

NEW YORKER
4 DOOR HARDTOP
(extra cost option)



BLUE..... Code H4B
*B, C, D, E, M, W



WHITE.... Code H4W
*ALL EXCEPT U



RED..... Code H4R
*B, M, R, T, W



TURQUOISE Code H4Q
*B, K, L, W

VINYL AND VINYL (BUCKET SEATS)

*Letter indicates basic body color for planned harmony.

1964 CHRYSLER INTERIOR TRIMS

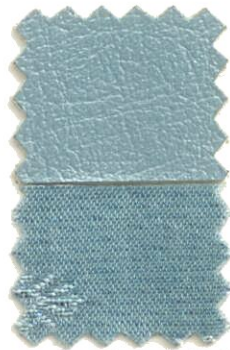
NEW YORKER 4 DOOR SEDAN AND 4 DOOR HARDTOP



WHITE and BLACK
..... Code H1N
*ALL EXCEPT U



MAUVE..... Code H1M
*B, O, R, T, W



TURQUOISE Code H1Q
*B, K, L, W

VINYL AND FABRIC

*Letter indicates basic body color for planned harmony.

1964 CHRYSLER

300K, 300 AND NEWPORT CONVERTIBLE TOPS



BLACKCode 396



WHITECode 397



BLUE Code 398

Black and White Convertible Tops are available with all exterior colors. Blue Convertible Top is available with Black, White, Wedgewood, Chrysler Blue, and Monarch Blue exterior colors only.

1964 CHRYSLER

NEW YORKER SALON
VINYL ROOF



BLACKCode 695

STANDARD WITH ALL
SALON EXTERIOR COLORS

1964 CHRYSLER INTERIOR TRIMS

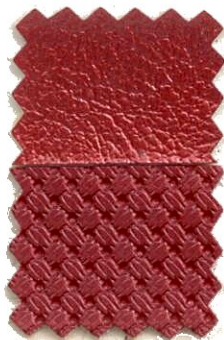
NEWPORT TOWN AND COUNTRY WAGON, CONVERTIBLE,
2 DOOR HARDTOP AND 4 DOOR HARDTOP



BLUE..... Code L4B
*B, C, D, E, M, W

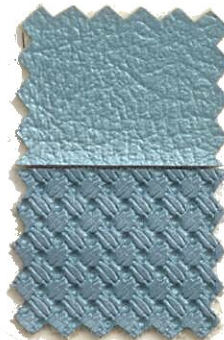


WHITE and BLACK
..... Code L4N
*ALL EXCEPT U



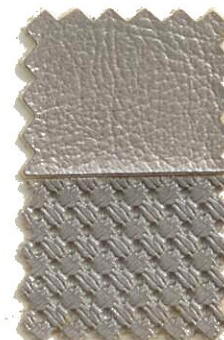
RED..... Code L4R
*B, M, R, T, W

NEWPORT
CONVERTIBLE



TURQUOISE Code L4Q
*B, K, L, W

NEWPORT TOWN AND
COUNTRY WAGON,
CONVERTIBLE



TAN..... Code L4T
*B, G, R, T, W, X, Y

VINYL AND VINYL (available only with airfoam seats) (For Convertible Top Materials,
See Last Page of Book.)

*Letter indicates basic body color for planned harmony.

All specifications subject to change without notice.

1964 CHRYSLER INTERIOR TRIMS

NEWPORT 2 DOOR HARDTOP AND 4 DOOR HARDTOP



BLUE..... Code L2B
*B, C, D, E, M, W



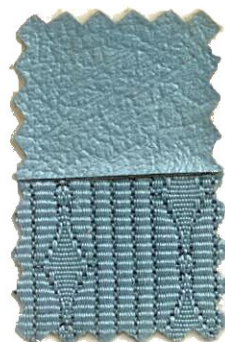
GREEN..... Code L2F
*B, F, G, W



TAN..... Code L2T
*B, G, R, T, W, X, Y



MAUVE.... Code L2M
*B, O, R, T, W



TURQUOISE Code L2Q
*B, K, L, W

VINYL AND FABRIC

*Letter indicates basic body color for planned harmony.

1964 CHRYSLER INTERIOR TRIMS

NEWPORT 4 DOOR SEDAN



MAIVE... Code L1M
*B, O, R, T, W



TURQUOISE Code L1Q
*B, K, L, W



WHITE and BLACK
..... Code L1N
*ALL EXCEPT U

VINYL AND FABRIC

*Letter indicates basic body color for planned harmony.

1964 CHRYSLER INTERIOR TRIMS

NEWPORT 4 DOOR SEDAN



BLUE..... Code L1B
*B, C, D, E, M, W



GREEN..... Code L1F
*B, F, G, W



TAN..... Code L1T
*B, G, R, T, W, X, Y

VINYL AND FABRIC

*Letter indicates basic body color for planned harmony.