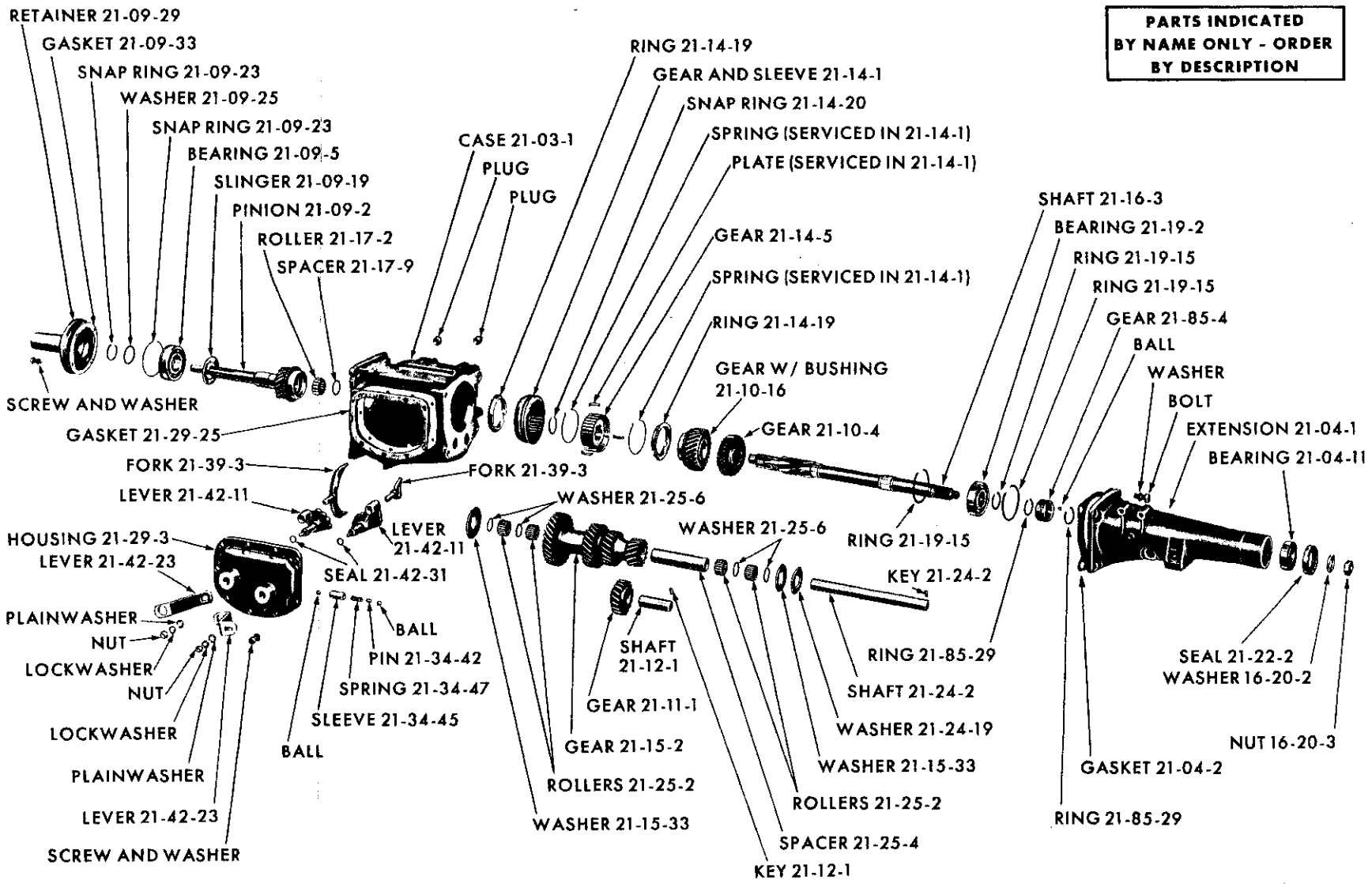


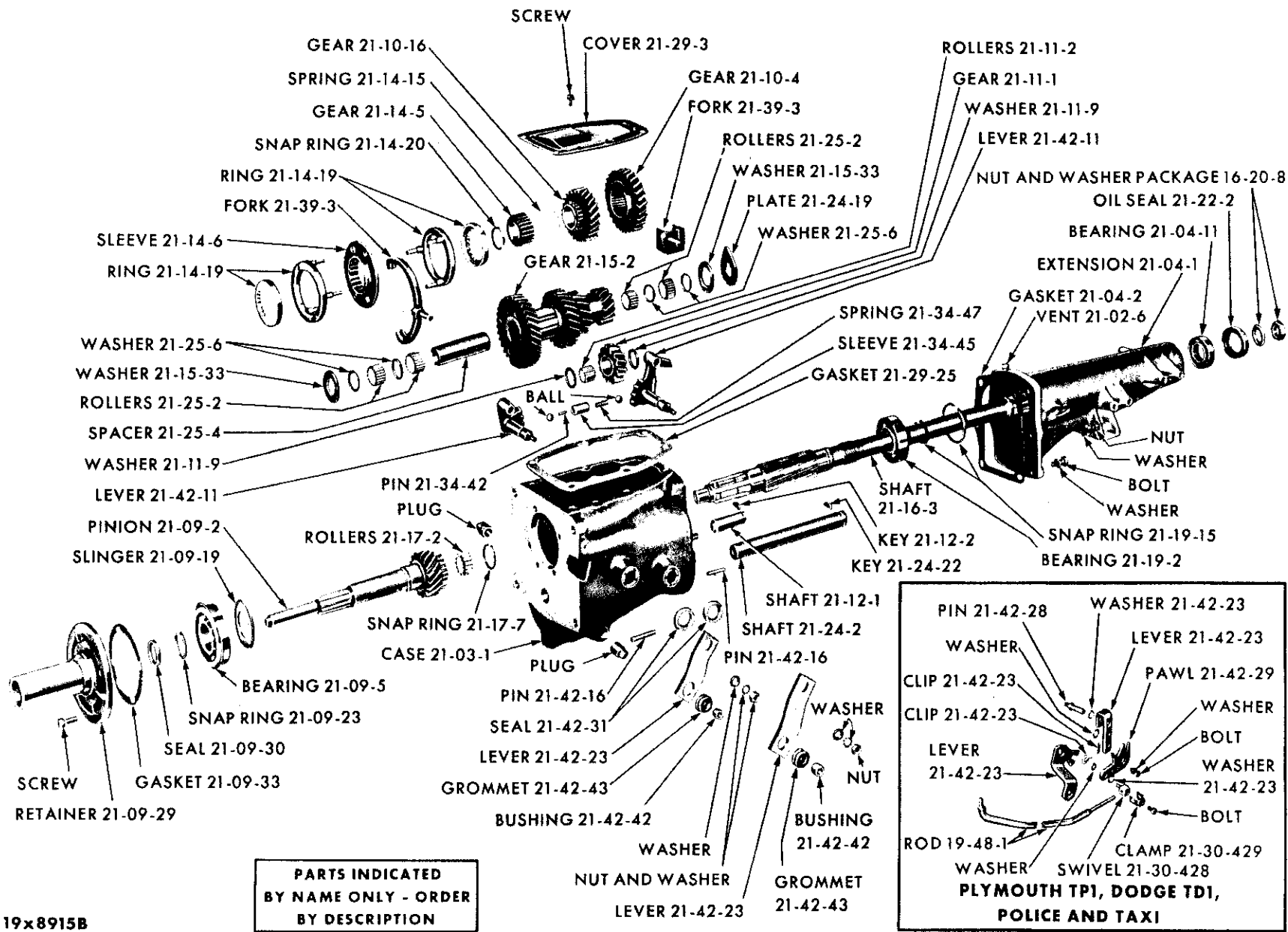
19x8774C

PARTS INDICATED BY NAME ONLY - ORDER BY DESCRIPTION



19x8798B

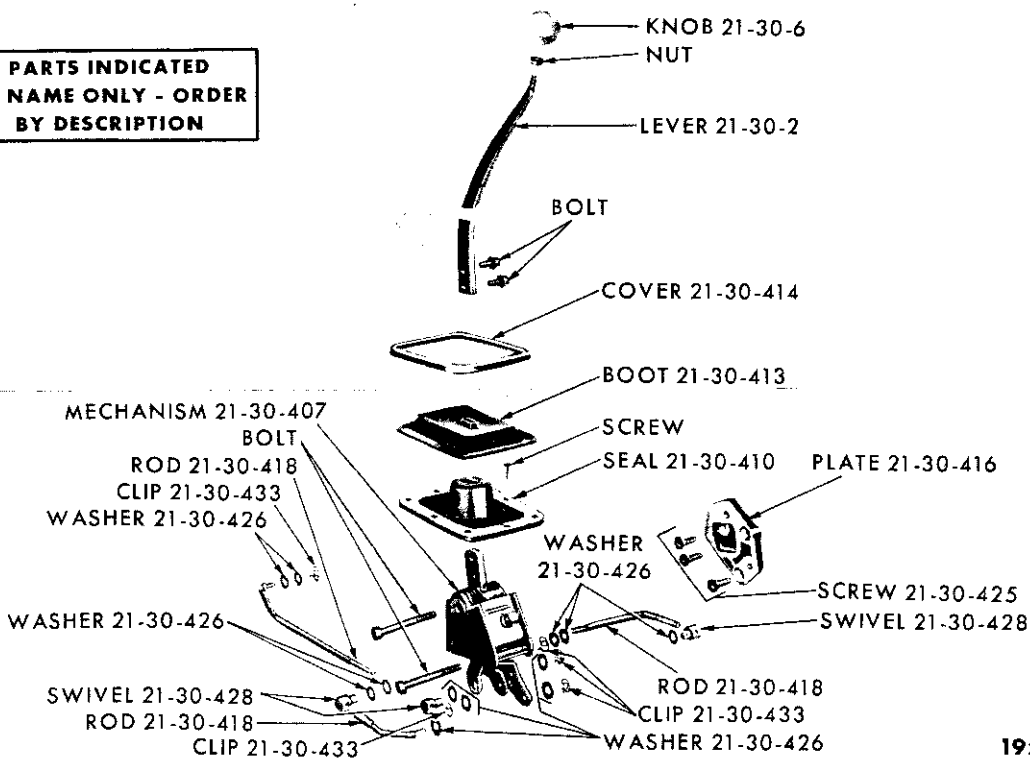
STANDARD TRANSMISSION - PLYMOUTH TP2 AND DODGE TD2 (WITH 426 CU. IN. ENGINE)



STANDARD TRANSMISSION (HEAVY DUTY) - PLYMOUTH TP1-2, DODGE TD1-2, TA3 AND CHRYSLER TC1-2

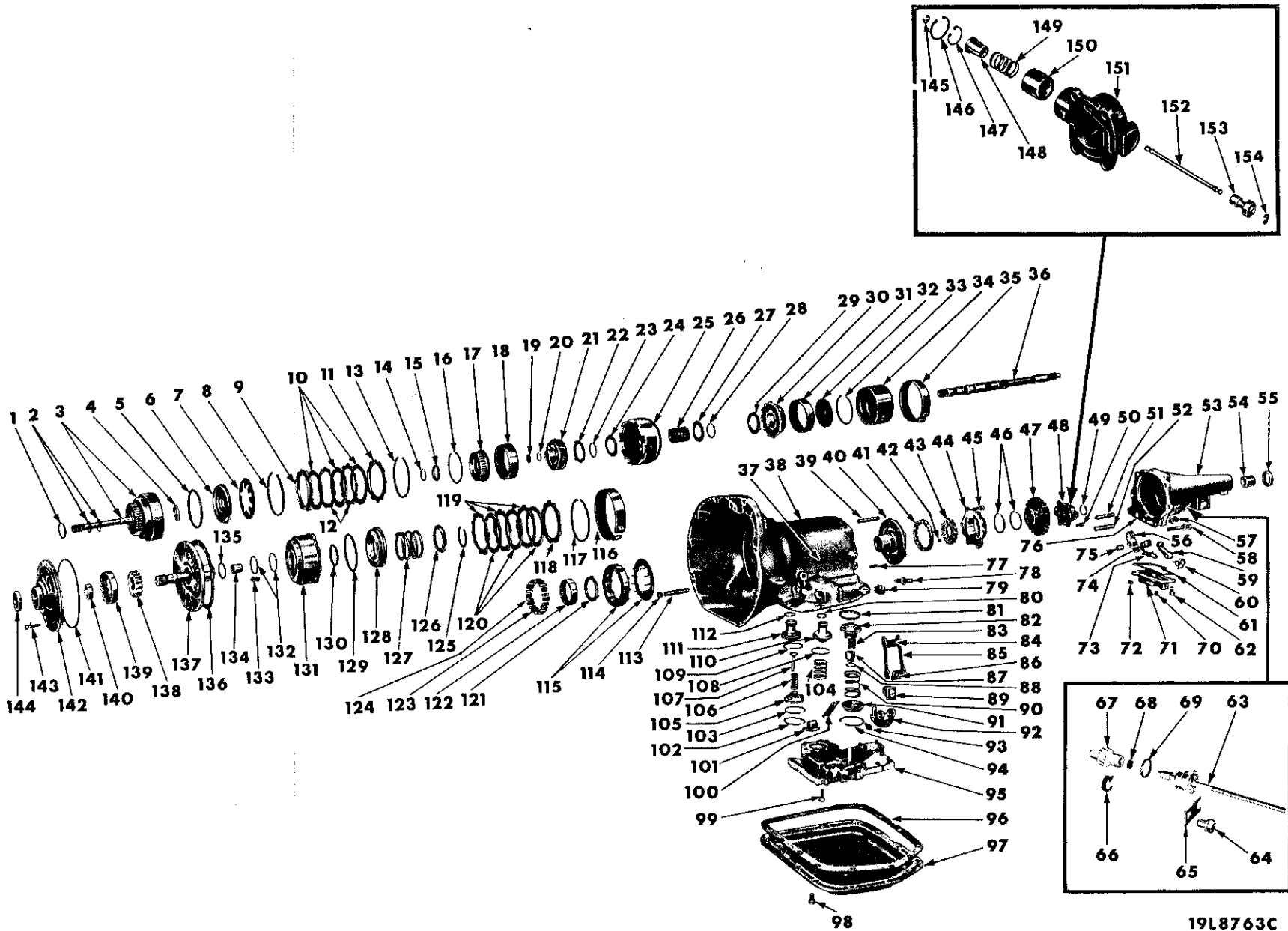
NOTES

**PARTS INDICATED
BY NAME ONLY - ORDER
BY DESCRIPTION**



19x9677

GEARSHIFT CONTROLS (MANUAL) - PLYMOUTH TP2 AND DODGE TD2 (WITH 4 SPEED TRANSMISSION AND 426 CU. IN. ENGINE); CHRYSLER TC2-300J



19L8763C

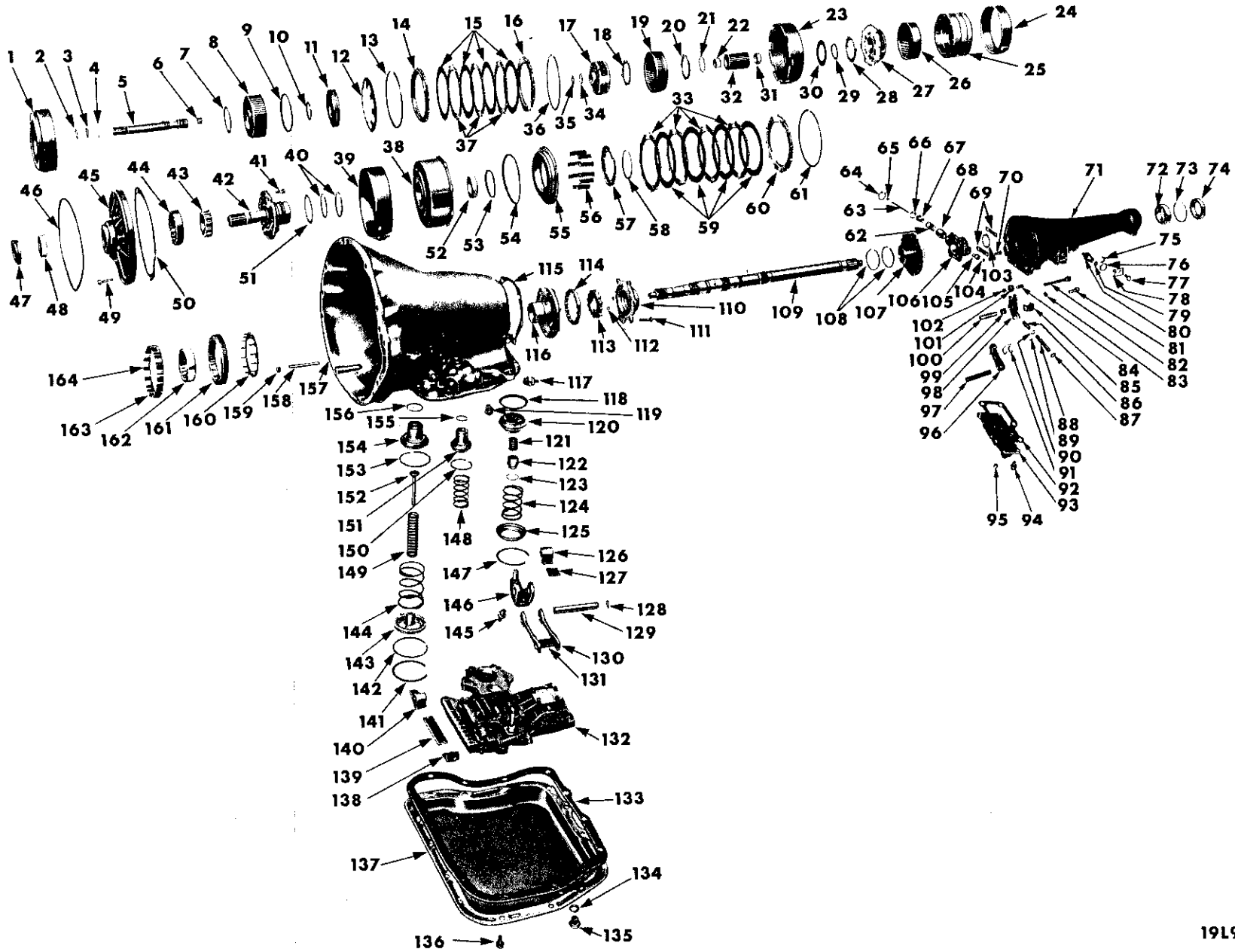
AUTOMATIC 3-SPEED TRANSMISSION - 6 CYLINDER

AUTOMATIC 3-SPEED TRANSMISSION - 6 CYLINDER

Ref. No.	Name	Part Type Code	Ref. No.	Name	Part Type Code
1	Washer	21-133-65	78	Screw	21-136-17
2	Ring	21-129-7	79	Switch	21-113-24
3	Shaft, Input	21-129-5	80	Ring	21-137-202
4	Seal	21-133-17	81	Seal	21-137-50
5	Seal	21-133-17	82	Piston, Reverse	21-137-35
6	Piston	21-133-15	83	Spring	21-137-41
7	Spring	21-133-20	84	Anchor	21-136-41
8	Snap Ring	21-133-25	85	Link	21-136-44
9	Plate	21-133-39	86	Strut	21-136-41
10	Disc	21-133-36	87	Plug	21-137-47
11	Plate	21-133-38	88	Snap Ring	21-137-44
12	Plate	21-133-39	89	Lever, Short	21-136-47
13	Snap Ring	21-133-43	90	Spring	21-137-53
14	Snap Ring	21-134-40	91	Retainer	21-137-56
15	Washer	21-134-45	92	Lever, w/Stem	21-136-47
16	Snap Ring	21-134-40	93	Screw	21-136-52
17	Support	21-134-36	94	Snap Ring	21-137-59
18	Gear	21-134-38	95	Body, w/Transfer Plate	21-139-4
19	Washer	21-05-35	96	Gasket	21-119-5
20	Snap Ring	21-05-19	97	Pan	21-119-3
21	Carrier, Front	21-134-5	98	Screw	21-119-3
22	Washer	21-133-48	99	Screw	
23	Ring	21-133-46	100	Strut	21-136-15
24	Plate	21-133-47	101	Lever	21-136-20
25	Shell	21-133-42	102	Snap Ring	21-137-19
26	Gear, Sun	21-133-40	103	Ring	21-137-8
27	Plate	21-133-47	104	Spring	21-137-205
28	Ring	21-133-46	105	Guide	21-137-13
29	Washer	21-133-48	106	Spring	21-137-22
30	Carrier, Rear	21-134-5	107	Rod	21-137-11
31	Gear	21-134-38	108	Ring	21-137-202
32	Support	21-134-36	109	Ring	21-137-8
33	Snap Ring	21-134-40	110	Piston, Accumulator	21-137-200
34	Drum, Reverse	21-136-65	111	Piston, Kickdown	21-137-5
35	Band, Reverse	21-136-30	112	Ring	21-137-8
36	Shaft, Output	21-05-1	113	Shaft	21-136-23
37	Seal	21-139-47	114	Plug	
38	Case	21-03-1	115	Retainer and Cam	21-136-228
39	Shaft	21-136-49	116	Band, Kickdown	21-136-5
40	Housing, Rear	21-118-40	117	Snap Ring	21-133-43
41	Rotor, Outer	21-118-7	118	Plate	21-133-39
42	Ball		119	Plate	21-133-38
43	Rotor, Inner (Serviced in 21-118-6)		120	Disc	21-133-36
44	Cover	21-118-53	121	Washer	21-136-237
45	Screw		122	Race	21-136-232
46	Ring	21-138-38	123	Spring	21-136-236
47	Support	21-138-10	124	Roller	21-136-235
48	Housing (Serviced in 21-138-2)		125	Snap Ring	21-133-43
49	Snap Ring	21-138-7	126	Retainer	21-133-22
50	Screw		127	Spring	21-133-20
51	Shaft	4-10-8	128	Piston	21-133-15
52	Bushing	4-10-12	129	Seal	21-133-17
53	Extension	21-04-1	130	Seal	21-133-17
54	Bushing	21-04-11	131	Retainer, Front	21-133-7
55	Oil Seal	21-05-12	132	Ring	21-129-13
56	Lever	4-10-7	133	Screw	
57	Screw		134	Bushing	21-129-23
58	Screw		135	Washer	21-133-65
59	Sprag	4-10-10	136	Gasket	21-129-24
60	Spring	4-10-11	137	Shaft, Reacting, w/Support	21-129-10
61	Gasket	4-10-16	138	Rotor, Inner (Serviced in 21-118-6)	
62	Screw		139	Rotor, Outer (Serviced in 21-118-6)	
63	Cable	21-84-1	140	Bushing	21-118-47
64	Screw		141	Oil Seal	21-118-45
65	Retainer	21-84-7	142	Housing, Front	21-118-40
66	Clip	21-85-61	143	Screw	21-118-55
67	Pinion	21-85-5	144	Oil Seal	21-118-42
68	Seal	21-85-56	145	Snap Ring	21-138-29
69	Seal	21-84-28	146	Snap Ring	21-138-19
70	Plug		147	Snap Ring	21-138-19
71	Cover	4-10-15	148	Weight	21-138-13
72	Plug		149	Spring	21-138-15
73	Adapter	4-10-2	150	Weight	21-138-13
74	Spacer	4-10-9	151	Body (Serviced in 21-138-2)	
75	Bearing	4-10-19	152	Shaft	21-138-26
76	Gasket	21-04-2	153	Valve	21-138-23
77	Pin		154	Snap Ring	21-138-29

PARTS INDICATED BY NAME ONLY - ORDER BY DESCRIPTION

19L9184C

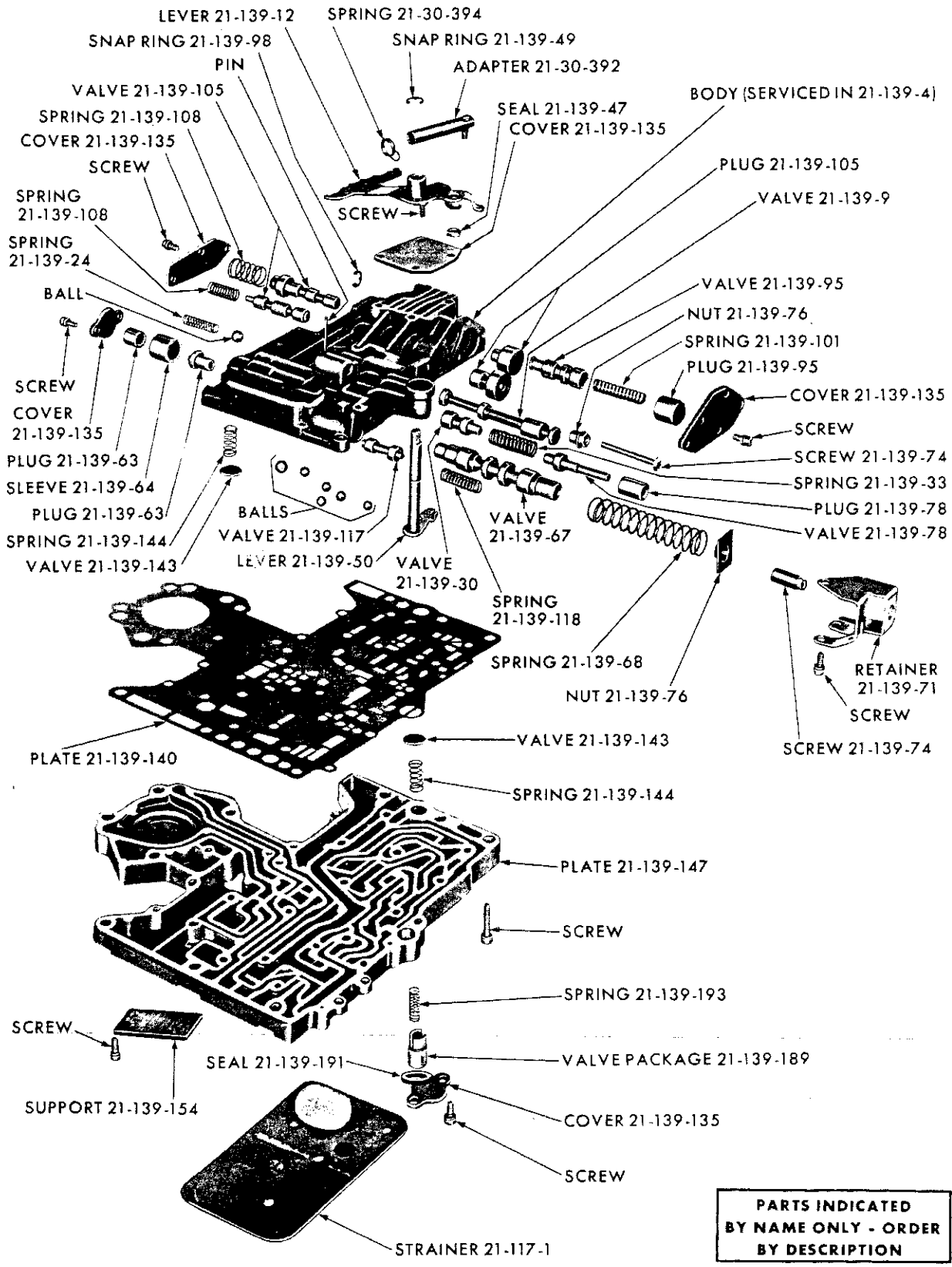


AUTOMATIC 3-SPEED TRANSMISSION - V8 CYLINDER

AUTOMATIC 3-SPEED TRANSMISSION - V8 CYLINDER

Ref. No.	Name	Part Type Code	Ref. No.	Name	Part Type Code
1	Retainer, Rear Clutch	21-133-7	83	Plug	
2	Ring	21-129-7	84	Shaft (Serviced in 4-10-7)	
3	Ring	21-129-7	85	Spacer	4-10-9
4	Ring	21-133-25	86	Spring	4-10-3
5	Shaft, Input	21-129-5	87	Spring	4-10-3
6	Bushing	21-129-6	88	Adapter	4-10-2
7	Washer	21-133-65	89	Pin	
8	Retainer, Rear Clutch Piston	21-133-7	90	Washer	4-10-4
9	Seal	21-133-17	91	Spring	4-10-11
10	Seal	21-133-17	92	Gasket	4-10-16
11	Piston	21-133-15	93	Cover	4-10-15
12	Spring	21-133-20	94	Screw	
13	Ring	21-133-25	95	Plug	
14	Plate	21-133-39	96	Sprag	4-10-10
15	Disc	21-133-36	97	Bushing	4-10-12
16	Plate	21-133-39	98	Lever	4-10-7
17	Carrier	21-134-5	99	Bearing (Serviced in 4-10-7)	
18	Washer	21-134-30	100	Shaft	4-10-8
19	Gear	21-134-38	101	Roller	4-10-17
20	Washer	21-133-48	102	Bearing	4-10-19
21	Ring	21-133-46	103	Ring	21-138-7
22	Bushing (Serviced in 21-133-40)		104	Ring	21-138-29
23	Shell	21-133-42	105	Valve	21-138-23
24	Band, Reverse	21-136-30	106	Housing (Serviced in 21-138-2)	
25	Drum, Reverse	21-136-65	107	Support	21-138-10
26	Gear	21-134-38	108	Ring	21-138-38
27	Carrier	21-134-5	109	Shaft, Output	21-05-1
28	Washer	21-134-30	110	Cover	21-118-53
29	Ring	21-133-46	111	Screw	
30	Plate	21-133-47	112	Ball	
31	Bushing (Serviced in 21-133-40)		113	Rotor (Serviced in 21-118-6)	
32	Gear	21-133-40	114	Rotor	21-118-7
33	Plate	21-133-38	115	Gasket	21-04-2
34	Ring	21-05-19	116	Housing	21-118-40
35	Washer	21-05-35	117	Switch	21-113-24
36	Ring	21-133-43	118	Ring	21-137-50
37	Plate	21-133-38	119	Screw	21-136-17
38	Retainer, Front Clutch	21-133-7	120	Piston	21-137-35
39	Band, Kickdown	21-136-5	121	Spring	21-137-41
40	Ring	21-129-13	122	Plug	21-137-47
41	Bolt		123	Ring	21-137-44
42	Shaft, Reaction	21-129-10	124	Spring	21-137-53
43	Rotor (Serviced in 21-118-6)		125	Retainer	21-137-56
44	Rotor (Serviced in 21-118-6)		126	Lever	21-136-47
45	Housing	21-118-40	127	Strut	21-136-41
46	Seal	21-118-45	128	Seal	21-136-55
47	Seal	21-118-42	129	Shaft	21-136-49
48	Bushing	21-118-47	130	Link	21-136-44
49	Bolt	21-118-55	131	Anchor	21-136-41
50	Gasket	21-118-54	132	Body, w/Plate	21-139-4
51	Washer	21-133-65	133	Gasket	21-119-5
52	Bushing	21-133-10	134	Gasket	21-119-12
53	Seal	21-133-17	135	Plug	21-119-11
54	Seal	21-133-17	136	Bolt	
55	Piston	21-133-15	137	Pan	21-119-3
56	Spring	21-133-20	138	Anchor	21-136-15
57	Retainer	21-133-22	139	Strut	21-136-15
58	Ring	21-133-43	140	Lever	21-136-20
59	Disc	21-133-36	141	Ring	21-137-19
60	Plate	21-133-39	142	Ring	21-137-8
61	Ring	21-133-43	143	Guide	21-137-13
62	Spring	21-138-15	144	Spring	21-137-22
63	Shaft	21-138-26	145	Screw	21-136-52
64	Ring	21-138-19	146	Lever	21-136-47
65	Ring	21-138-29	147	Ring	21-137-59
66	Ring	21-138-19	148	Spring	21-137-205
67	Weight	21-138-13	149	Spring	21-137-22
68	Weight	21-138-13	150	Ring	21-137-202
69	Lock	21-138-21	151	Piston	21-137-200
70	Bolt		152	Rod	21-137-11
71	Extension	21-04-1	153	Ring	21-137-8
72	Bearing	21-04-11	154	Piston	21-137-5
73	Ring	21-04-12	155	Ring	21-137-202
74	Seal	21-05-12	156	Ring	21-137-8
75	Clip	21-85-61	157	Case	21-03-1
76	Seal	21-84-28	158	Shaft	21-136-23
77	Bolt		159	Plug	
78	Clamp	21-84-7	160	Retainer	21-136-233
79	Seal	21-85-56	161	Cam	21-136-231
80	Pinion	21-85-5	162	Race	21-136-232
81	Screw	21-04-6	163	Spring	21-136-236
82	Screw	21-04-6	164	Roller	21-136-235

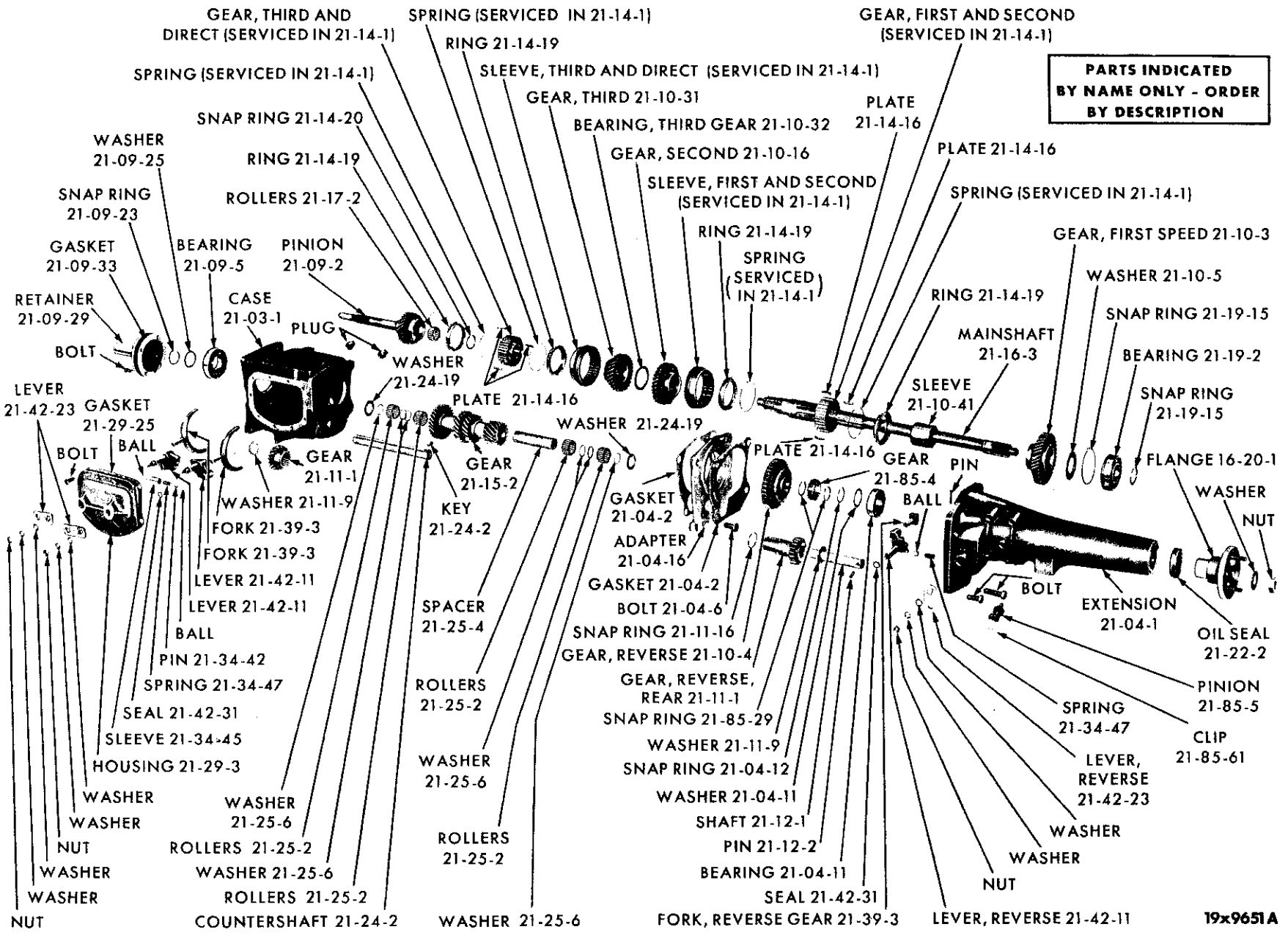
PARTS INDICATED BY NAME ONLY - ORDER BY DESCRIPTION



PARTS INDICATED BY NAME ONLY - ORDER BY DESCRIPTION

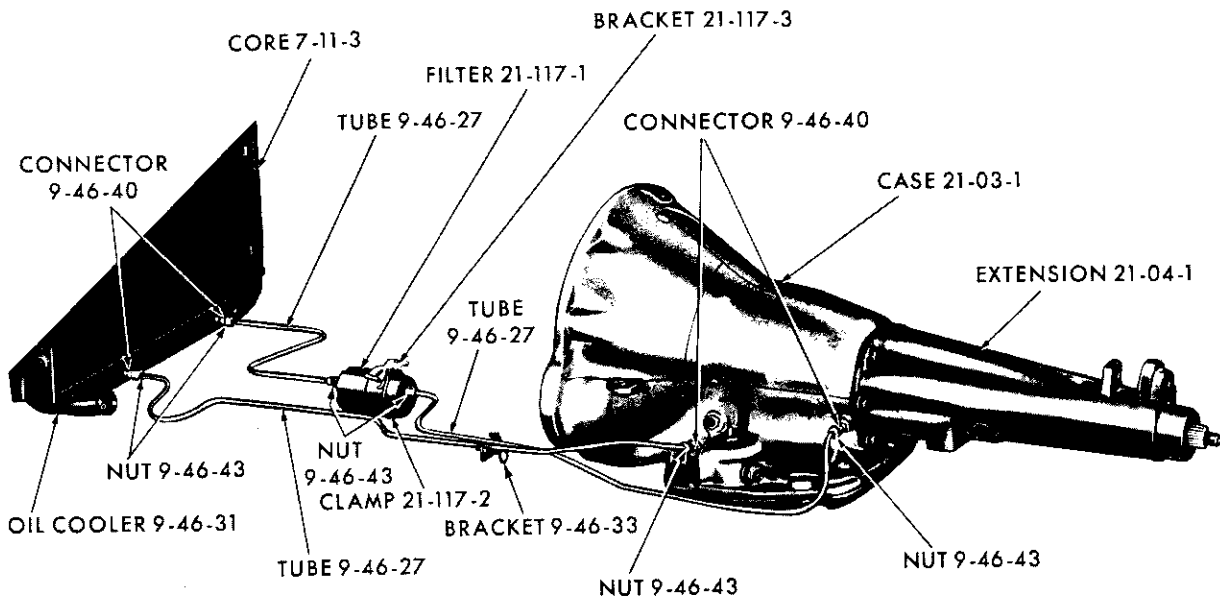
19x8761D

AUTOMATIC 3-SPEED TRANSMISSION VALVE BODY AND VALVES



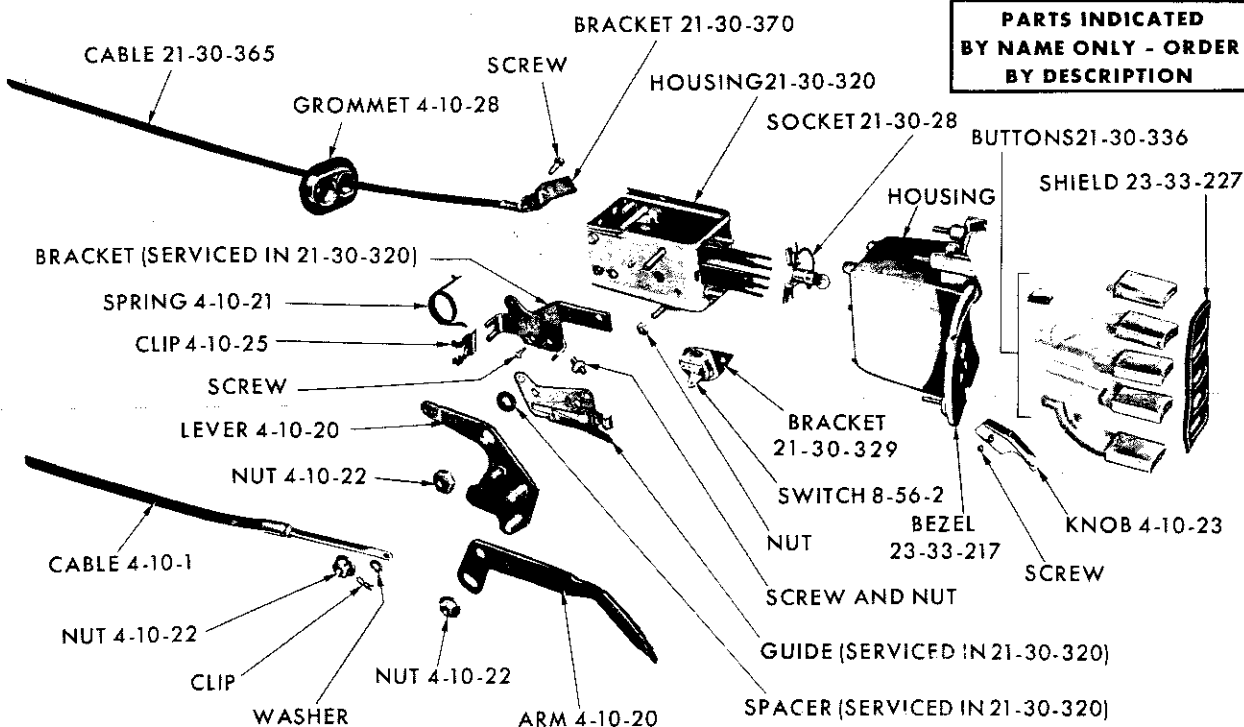
4 SPEED TRANSMISSION (WARNER GEAR T-10)

19x9651A



19x9340A

TRANSMISSION OIL COOLER SYSTEM



19x9656B

TRANSMISSION PUSH BUTTON CONTROLS

CODE	PART NAME AND DESCRIPTION	CYL.	PER CAR	VALIANT DART	PLYMOUTH DODGE	CHRYSLER IMPERIAL
------	---------------------------	------	---------	--------------	----------------	-------------------

STANDARD TRANSMISSION

NOTE: Standard Transmission parts listed as Heavy Duty are Standard Equipment on TP1, TD1, Police Cars and Taxis, TP2, TD2, TA3, TC1.

21-01-0 TRANSMISSION SETS OR PACKAGES

21-01-3	GASKET SET	6	1	2196 062	2275 896	
	Heavy Duty Trans., TP1, TP2, TD1, TD2		1	----	2275 893	
	TP2, TD2, w/426 cu. in. Engine	8	1	----	2084 243	
	TA3, TC1, TC2	8	1	----	2240 320	2240 320
	TP2, TD2, w/4 Speed	8	1	----	2448 370	

21-02-0 TRANSMISSION ASSEMBLY

21-02-1	TRANSMISSION, TV1, TL1, w/225 cu. in. Engine	6	1	*2408 104	*2408 139	
	w/170 cu. in. Engine, used UP TO date					
	10-10-62 stamped on Trans. Cover	6	1	*2408 104		
	w/170 cu. in. Engine, used AFTER date					
	10-10-62 stamped on Trans. Cover	6	1	E2408 150		
	Heavy Duty Trans., w/7 Tooth Speedometer					
	Gear, used UP TO date 11-9-62 stamped					
	on Trans. Cover	6	1	----	*2400 846	
	Heavy Duty Trans., w/8 Tooth Speedometer					
	Gear, used AFTER date 11-9-62 stamped					
	on Trans. Cover	6	1	----	E2464 094	
	TP2, TD2, w/7 Tooth Speedometer Gear, used					
	UP TO date 11-9-62 stamped on Trans. Cover	8	1	----	*2400 801	
	TP2, TD2, w/8 Tooth Speedometer Gear, w/318					
	cu. in. Engine, used AFTER date 11-9-62					
	stamped on Trans. Cover	8	1	----	E2464 094	
	TP2, TD2, w/8 Tooth Speedometer Gear, w/361					
	and 383 cu. in. Engine, used AFTER date					
	11-9-62 stamped on Trans. Cover	8	1	----	E2464 098	
	TA3, TC1, TC2 except 300J, w/7 Tooth					
	Speedometer Gear, UP TO Serial No.148853	8	1	----	*2400 396	*2400 396
	TA3, TC1, TC2, except 300J, w/8 Tooth					
	Speedometer Gear, AFTER Serial No.148853	8	1	----	E2464 096	E2464 096
	TP2, TD2, w/426 cu. in. Engine	8	1	----	2400 690	
	TP2, TD2, 4 Speed, w/318 cu. in. Engine	8	1	----	2400 872	
	TP2, TD2, 4 Speed, w/361 and 383 cu. in.					
	Engine	8	1	----	2400 442	
	TC2-300J	8	1	----	----	2400 758
21-02-6	VENT, TC1, TC2		1	1139 204	1139 204	1139 204
	TP2, TD2, w/4 Speed	8	1	----	2408 099	

21-03-0 TRANSMISSION CASE

21-03-1	CASE	6	1	2400 569	2400 569	
	Heavy Duty Trans.	6	1	----	2400 829	
	TC1, TC2	8	1	----	2400 570	2400 570
	TP2, TD2, w/426 cu. in. Engine	8	1	----	2124 271	
	TP2, TD2, w/4 Speed	8	1	----	2408 078	
21-03-24	PLUG, Back-Up Light Switch Hole TC1, TC2		1	1139 153	1139 153	1139 153
21-03-25	GASKET, Plug, TC1, TC2		1	1302 807	1302 807	1302 807

21-04-0 TRANSMISSION CASE EXTENSION

21-04-1	EXTENSION	6	1	2400 738	2400 737	
	TP1, TP2, TD1, TD2, Heavy Duty Trans.		1	----	2400 627	

★ Indicates use as required. Numerals in parentheses () refer to notes. Printed in U.S.A.
 E Indicates parts not listed in any previous parts book. Prices and specifications subject to change without notice.
 * Indicates change or addition. Jan. 25, 1963 Supersedes Dec. 14, 1962.

CODE	PART NAME AND DESCRIPTION	C Y L.	PER CAR	VALIANT DART	PLYMOUTH DODGE	CHRYSLER IMPERIAL
------	---------------------------	--------------	------------	-----------------	-------------------	----------------------

STANDARD TRANSMISSION

21-04-0 TRANSMISSION CASE EXTENSION - Cont'd

21-04-1	EXTENSION - Cont'd					
	TP2, TD2, w/426 cu. in. Engine	8	1	----	*2400 700	
	TA3, TC1, TC2 except 300J	8	1	----	2400 414	2400 414
	TP2, TD2, w/4 Speed	8	1	----	2400 440	
	TC2-300J	8	1	----	----	2400 805
21-04-2	GASKET	6	1	1949 361	1949 361	
	Heavy Duty Trans., TC1, TC2		1	----	2124 519	2124 519
	TP2, TD2, w/426 cu. in. Engine	8	1	----	1921 480	
	Adapter to Case, TP2, TD2, w/4 Speed	8	1	----	2408 112	
	Adapter to Extension, TP2, TD2, w/4 Speed	8	1	----	2408 111	
21-04-6	BOLT, Adapter to Trans. Case, TP2, TD2, w/4 Speed	8	1	----	2408 113	
21-04-11	BUSHING, Extension	6	1	2124 607	1941 887	
	BEARING, Heavy Duty Trans., TC1, TC2		1	----	1672 194	1672 194
	BEARING, TP2, TD2, w/426 cu. in. Engine	8	1	----	1672 194	
	BEARING, TP2, TD2, w/4 Speed	8	1	----	1672 194	
	WASHER, TP2, TD2, w/426 cu. in. Engine	8	1	----	6023 561	
	WASHER, TP2, TD2, w/4 Speed	8	1	----	6023 561	
21-04-12	SNAP RING, Extension Bearing, TP2, TD2, w/426 cu. in. Engine, TP2, TD2, w/4 Speed.	8	1	----	*6023 560	
	TP2, TD2, w/4 Speed	8	1	----	6023 560	
21-04-16	ADAPTER, Extension, TP2, TD2, w/4 Speed.	8	1	----	2408 109	

21-09-0 TRANSMISSION MAIN DRIVE PINION

21-09-2	PINION, 21T., 18T., 23 Splines, 10 1/2" lgh., w/170 cu. in. Engine, used UP TO date 10-10-62 stamped on Trans. Cover	6	1	*2204 944		
	20T., 17T., 23 Splines, 10 1/2" lgh., w/170 cu. in. Engine, used AFTER date 10-10-62 stamped on Trans. Cover	6	1	E2204 554		
	21T., 18T., 23 Splines, 10 1/2" lgh., TV1, TL1, w/225 cu. in. Engine	6	1	*2204 944	*2204 944	
	24T., 18T., 23 Splines, 10 17/32" lgh., w/7 Tooth Speedometer Gear, Heavy Duty Trans., used UP TO date 11-9-62 stamped on Trans. Cover	6	1	----	*2125 195	
	24T., 18T., 23 Splines, 10 17/32" lgh., w/8 Tooth Speedometer Gear, Heavy Duty Trans., used AFTER date 11-9-62 stamped on Trans. Cover.	6	1	----	E2408 147	
	24T., 20T., 23 Splines, 10 17/32" lgh., TP2, TD2, w/361 and 383 cu. in. Engine	8	1	----	*2124 937	
	24T., 20T., 23 Splines, 10 17/32" lgh., TP2, TD2, w/318 cu. in. Engine, w/7 Tooth Speedometer Gear, used UP TO date 11-9-62 stamped on Trans. Cover.	8	1	----	*2124 937	
	24T., 18T., 23 Splines, 10 17/32" lgh., TP2, TD2, w/318 cu. in. Engine, w/8 Tooth Speedometer Gear, used AFTER Date 11-9-62 stamped on Trans. Cover	8	1	----	E2408 147	
	23T., 36T., 21T., 11" lgh., TP2, TD2, w/426 cu. in. Engine	8	1	----	2400 694	

★ Indicates use as required.

Numerals in parentheses () refer to notes.

Printed in U.S.A.

E Indicates parts not listed in any previous parts book.

Prices and specifications subject to change without notice.

Jan. 25, 1963 Supersedes Dec. 14, 1962.

* Indicates change or addition.

CODE	PART NAME AND DESCRIPTION	CYL.	PER CAR	VALIANT DART	PLYMOUTH DODGE	CHRYSLER IMPERIAL
------	---------------------------	------	---------	--------------	----------------	-------------------

STANDARD TRANSMISSION

21-09-0 TRANSMISSION MAIN DRIVE PINION - Cont'd

21-09-2	PINION - Cont'd 25T., 36T., 23 Splines, 11" lgh., TP2, TD2, w/4 Speed, w/318 cu. in. Engine	8	1	----	2400 874	
	27T., 36T., 23 Splines, 11" lgh., TP2, TD2, w/4 Speed, w/361 and 383 cu. in. Engine	8	1	----	2400 436	
	24T., 20T., 24 Splines, 12 29/32" lgh., TA3, TC1, TC2 except 300J	8	1	----	2124 683	2124 683
	23T., 22T., 24T., 12 29/32" lgh., TC2-300J	8	1	----	----	2400 761
21-09-5	BEARING Heavy Duty Trans., TC1, TC2	6	1	1633 718	1633 718	2124 516
	TP2, TD2, w/426 cu. in. Engine	8	1	----	*2124 516	
	TP2, TD2, w/4 Speed	8	1	----	2124 517	
21-09-19	SLINGER, Bearing Oil, TC1, TC2 TP2, TD2, w/426 cu. in. Engine	8	1	1633 669	1633 669	1633 669
				----	1921 471	
21-09-23	SNAP RING, Bearing, .088" thk., TC1, TC2091" thk., TC1, TC2094" thk., TC1, TC2097" thk., TC1, TC2 Inner, TP2, TD2, w/426 cu. in. Engine Outer, TP2, TD2, w/426 cu. in. Engine Inner, TP2, TD2, w/4 Speed Outer, TP2, TD2, w/4 Speed			★ ★ ★ ★ 8 8 8 8	631 823 631 824 631 825 640 332 1921 472 1569 909 1921 472 1569 909	631 823 631 824 631 825 640 332
21-09-25	WASHER, Bearing TP2, TD2, w/426 cu. in. Engine TP2, TD2, w/4 Speed	6 8 8	1 1 1	631 877 ----	631 877 1921 473 1921 473	
21-09-29	RETAINER, Bearing Heavy Duty Trans., TP1, TP2, TD1, TD2 TP2, TD2, w/426 cu. in. Engine TA3, TC1, TC2 TP2, TD2, w/4 Speed	6 8 8 8 8	1 1 1 1 1	2204 491 ----	2204 491 2124 945 2400 438 2124 396 2400 438	2124 396
21-09-30	OIL SEAL, Pinion, TP1, TP2, TD1, TD2 TA3, TC1, TC2	8 8	1 1	1949 343 ----	1949 343 1949 933	1949 933
21-09-31	SCREW, Retainer		★	1920 101	1920 101	1920 101
21-09-33	GASKET, Bearing Retainer Heavy Duty Trans., TC1, TC2 TP2, TD2, w/426 cu. in. Engine TP2, TD2, w/4 Speed	6 8 8 8	1 1 1 1	672 709 ----	672 709 2124 499 1921 475 2408 098	2124 499

21-10-0 TRANSMISSION GEARS

21-10-3	GEAR, First Speed, TP2, TD2, w/4 Speed	8	1	----	2408 107	
21-10-4	GEAR, Sliding, First and Reverse, 29T., 32 Splines First and Reverse, 28T., 34 Splines, Heavy Duty Trans., TC1, TC2 First and Reverse, TP2, TD2, w/426 cu. in. Engine Reverse, TP2, TD2, w/4 Speed	6 8 8 8	1 1 1 1	2204 606 ----	2204 606 2124 561 2400 683 2408 092	2124 561
21-10-5	WASHER, First Speed Gear Thrust, TP2, TD2, w/4 Speed	8	1	----	2408 095	

★ Indicates use as required.

Numerals in parentheses () refer to notes.

Printed in U.S.A.

☐ Indicates parts not listed in any previous parts book.

Prices and specifications subject to change without notice.

* Indicates change or addition.

CODE	PART NAME AND DESCRIPTION	CYL.	PER CAR	VALIANT DART	PLYMOUTH DODGE	CHRYSLER IMPERIAL
------	---------------------------	------	---------	--------------	----------------	-------------------

STANDARD TRANSMISSION

21-10-O TRANSMISSION GEARS - Cont'd

21-10-16	GEAR, Second Speed, 24T., 24T., w/170 cu. in. Engine, used UP TO date 10-10-62 stamped on Trans. Cover	6	1	2205 195		
	23T., 24T., w/170 cu. in. Engine, used AFTER date 10-10-62 stamped on Trans. Cover	6	1	2124 359		
	24T., 24T., TV1, TL1, w/225 cu. in. Engine	6	1	2205 195	2205 195	
	24T., 24T., Heavy Duty Trans., TC1, TC2 except 300J		1	----	2124 560	2124 560
	TP2, TD2, w/426 cu. in. Engine.	8	1	----	2400 692	
	30T., 36T., TP2, TD2, w/4 Speed	8	1	----	2408 103	
	24T., 25T., TC2-300J	8	1	----	----	2400 759
21-10-31	GEAR, Third Speed, 29T., 36T., TP2, TD2, w/4 Speed	8	1	----	*2408 102	
21-10-32	BEARING, Third Speed Gear Needle Thrust, TP2, TD2, w/4 Speed	8	1	----	2408 100	
21-10-41	SLEEVE, First Speed Gear, TP2, TD2, w/4 Speed	8	1	----	2408 108	

21-11-O TRANSMISSION REVERSE IDLER GEAR

21-11-1	GEAR, 15T.	6	1	1853 695	1853 695	
	14T., Heavy Duty Trans., TC1, TC2		1	----	2124 562	2124 562
	TP2, TD2, w/426 cu. in. Engine	8	1	----	1921 501	
	Front, 18T., 27 Splines, TP2, TD2, w/4 Speed	8	1	----	2408 084	
	Rear, w/BUSHING, 19T., 27 Splines, TP2, TD2, w/4 Speed	8	1	----	2408 083	
21-11-2	ROLLER, Bearing, TC1, TC2		22	666 927	666 927	666 927
	BUSHING, TP2, TD2, w/426 cu. in. Engine	8	1	----	1921 503	
21-11-9	WASHER	6	2	666 924	666 924	
	Heavy Duty Trans., TC1, TC2		2	----	2204 978	2204 978
	Thrust, Front, TP2, TD2, w/4 Speed	8	1	----	2408 089	
	Thrust, Rear, TP2, TD2, w/4 Speed	8	1	----	2408 080	
21-11-16	SNAP RING, Gear, Front, TP2, TD2, w/4 Speed	8	1	----	2408 087	

21-12-O TRANSMISSION REVERSE IDLER GEAR SHAFT

21-12-1	SHAFT, TC1, TC2		1	1635 290	1635 290	1635 290
	TP2, TD2, w/426 cu. in. Engine	8	1	----	1921 504	
	TP2, TD2, w/4 Speed	8	1	----	2408 088	
21-12-2	KEY, TC1, TC2		1	1635 293	1635 293	1635-293
	PIN, TP2, TD2, w/4 Speed	8	1	----	2408 091	

21-14-O TRANSMISSION CLUTCH GEAR

21-14-1	SYNCHRONIZER UNIT	6	1	2408 141	2408 141	
	Heavy Duty Trans., TC1, TC2		1	----	*2400 864	*2400 864
	TP2, TD2, w/426 cu. in. Engine.	8	1	----	*2408 096	
	First and Second, TP2, TD2, w/4 Speed	8	1	----	2408 105	
	Third and Direct, TP2, TD2, w/4 Speed	8	1	----	2408 096	
21-14-5	GEAR, 24T., 32T.	6	1	*2204 619	*2204 619	
	24T., 32T., Heavy Duty Trans., TC1, TC2		1	----	2204 666	2204 666
	TP2, TD2, w/426 cu. in. Engine.	8	1	----	1921 486	

* Indicates use as required. Numerals in parentheses () refer to notes. Printed in U.S.A.
 † Indicates parts not listed in any previous parts book. Prices and specifications subject to change without notice.
 Jan. 3, 1964 Supersedes Jan. 25, 1963. Page 21-12 † Indicates change or addition.

CODE	PART NAME AND DESCRIPTION	C Y L.	PER CAR	VALIANT DART	PLYMOUTH DODGE	CHRYSLER IMPERIAL
------	---------------------------	--------------	------------	-----------------	-------------------	----------------------

STANDARD TRANSMISSION

21-14-0 TRANSMISSION CLUTCH GEAR - Cont'd

21-14-6	SLEEVE Heavy Duty Trans., TC1, TC2	6	1 1	1676 197 ----	1676 197 2124 387	2124 387
21-14-15	SPRING, Synchronizer Stop Ring Heavy Duty Trans., TC1, TC2	6	1 1	1823 916 ----	1823 916 2205 061	2205 061
21-14-16	PLATE, Synchronizer Shifting, TP2, TD2, w/4 Speed	8	3	----	*1921 498	
21-14-19	RING, Synchronizer Stop, Outer Direct Speed Synchronizer Stop, Inner. 2nd Speed Synchronizer Stop, Inner Synchronizer Stop, Outer, Heavy Duty Trans., TC1, TC2 except 300J Outer, TC2-300J Inner, Heavy Duty Trans., TC1, TC2 TP2, TD2, w/426 cu. in. Engine. First and Second, TP2, TD2, w/4 Speed Third and Direct Blocker, TP2, TD2, w/4 Speed	6 6 6 8 8 8 8 8	2 1 1 2 2 2 2 2	2205 059 *2400 533 2400 533 ---- ---- ---- ---- ----	2205 059 *2400 533 2400 533 *2400 865 ---- 2124 472 1921 499 *1921 499 *1921 499	*2400 865 2400 865 2124 472
21-14-20	SNAP RING, TC1, TC2 Third and Direct Clutch Gear, TP2, TD2, w/4 Speed		★ 8	2205 192 ----	2205 192 1921 472	2205 192
21-14-21	SHIM, TC1, TC2		1	*2464 724	*2464 724	*2464 724

21-15-0 TRANSMISSION COUNTERSHAFT GEAR

21-15-2	GEAR, 33T., 24T., 18T., 14T., 6 53/64" lgh., w/170 cu. in. Engine, used UP TO date 10-10-62 stamped on Trans. Cover 34T., 25T., 18T., 14T., 6 53/64" lgh., w/170 cu. in. Engine, used AFTER date 10-10-62 stamped on Trans. Cover. 33T., 24T., 18T., 14T., 6 53/64" lgh., TV1, TL1, w/225 cu. in. Engine 33T., 25T., 17T., 13T., Heavy Duty Trans. 31T., 25T., 17T., 13T., TP2, TD2, w/361 and 383 cu. in. Engine, TA3 31T., 25T., 17T., 13T., TP1, TD2, w/318 cu.in. Engine, w/7 Tooth Speedometer Gear, used UP TO date 11-9-62 stamped on Trans. Cover. 33T., 25T., 17T., 13T., TP2, TD2, w/318 cu.in. Engine, w/8 Tooth Speedometer Gear, used AFTER date 11-9-62 stamped on Trans. Cover 31T., 25T., 17T., 13T., TC1, TC2 except 300J. 29T., 23T., 17T., 13T., TC2-300J 27T., 24T., 19T., 15T., 7 15/16" lgh., TP2, TD2, w/426 cu. in. Engine 30T., 23T., 19T., 17T., 8" lgh., TP2, TD2, w/4 Speed, w/318 cu. in. Engine 28T., 23T., 19T., 17T., 8" lgh., TP2, TD2, w/4 Speed, w/361 and 383 cu. in. Engine	6 6 6 6 6 8 8 8 8 8 8 8 8 8 8	1 1 1 1 1 1 1 1 1 1 1 1 1 1	2205 132 2204 555 2205 132 ---- ---- ---- ---- ---- ---- ---- ---- ---- ---- ---- ----	2205 132 2124 386 2124 384 2124 384 2124 386 ---- ---- 2400 696 2408 079 2408 082	2124 384 2400 760
21-15-33	WASHER, Thrust, .057" thk.062" thk.057" thk., Heavy Duty Trans., TC1, TC2062" thk., Heavy Duty Trans., TC1, TC2 Front, TP2, TD2, w/426 cu. in. Engine. Rear, TP2, TD2, w/426 cu. in. Engine	6 6 6 6 8 8	★ ★ ★ ★ 1 1	1633 763 1633 762 ---- ---- ---- ----	1633 763 1633 762 2124 505 2124 504 1921 492 1921 493	2124 505 2124 504

★ Indicates use as required. Numerals in parentheses () refer to notes. Printed in U.S.A.
 B Indicates parts not listed in any previous parts book. Prices and specifications subject to change without notice.
 * Indicates change or addition. Jan. 3, 1964 Supersedes Jan. 25, 1963.

CODE	PART NAME AND DESCRIPTION	CYL.	PER CAR	VALIANT DART	PLYMOUTH DODGE	CHRYSLER IMPERIAL
------	---------------------------	------	---------	--------------	----------------	-------------------

STANDARD TRANSMISSION

21-16-0 TRANSMISSION MAIN SHAFT

21-16-3	SHAFT, 32, 32, 23 Splines, 22 1/4" lgh.	6	1	2400 390		
	32, 32, 23 Splines, 25 1/2" lgh., w/7 Tooth Speedometer Gear	6	1	-----	*2204 616	
	32, 34, 23 Splines, 25 1/4" lgh., TP1, TP2, TD1, TD2, Heavy Duty Trans., w/7 Tooth Speedometer Gear, used UP TO date 11-9-62 stamped on Trans. Cover		1	-----	*2408 009	
	32, 34, 23 Splines, 25 1/4" lgh., TP1, TP2, TD1, TD2, Heavy Duty Trans., w/8 Tooth Speedometer Gear, used AFTER date 11-9-62 stamped on Trans. Cover		1	-----	E2408 041	
	32, 34, 23 Splines, 25 1/4" lgh., w/7 Tooth Speedometer Gear, TA3, TC1, TC2 except 300J, UP TO Serial No. 148853	8	1	-----	*2408 009	*2408 009
	32, 34, 23 Splines, 25 1/4" lgh., w/8 Tooth Speedometer Gear, TA3, TC1, TC2 except 300J, AFTER Serial No. 148853	8	1	-----	E2408 041	E2408 041
	32, 34, 23 Splines, 25 1/4" lgh., w/7 Tooth Speedometer Gear, TC2-300J.	8	1	-----	-----	*2408 009
	6, 6, 23 Splines, 26 53/64" lgh., TP2, TD2, w/426 cu. in. Engine	8	1	-----	2400 697	
	6, 10, 6, 23 Splines, 27 3/8" lgh., TP2, TD2, w/4 Speed	8	1	-----	2400 439	

21-17-0 TRANSMISSION MAIN SHAFT PILOT BEARING

21-17-2	ROLLER, TC1, TC2	8	★	1949 834	1949 834	1949 834
	TP2, TD2, w/426 cu. in. Engine.	8	14	-----	1921 482	
	TP2, TD2, w/4 Speed	8	14	-----	2408 081	
21-17-7	SNAP RING, Roller	6	1	601 108	601 108	
	Heavy Duty Trans., TC1, TC2		1	-----	862 173	862 173
21-17-9	SPACER, Pilot Bearing Roller, TP2, TD2, w/426 cu. in. Engine.	8	1	-----	1923 509	

21-19-0 TRANSMISSION MAIN SHAFT BEARING

21-19-2	BEARING	6	1	1633 718	1633 718	
	Heavy Duty Trans., Frt., TC1, TC2		1	-----	620 521	620 521
	TP2, TD2, w/426 cu. in. Engine.	8	1	-----	620 521	
	TP2, TD2, w/4 Speed	8	1	-----	2124 517	
21-19-15	SNAP RING, Inner, .088" thk., TC1, TC2		★	631 823	631 823	631 823
	Inner, .091" thk., TC1, TC2		★	631 824	631 824	631 824
	Inner, .095" thk., TC1, TC2		★	631 825	631 825	631 825
	Inner, .097" thk., TC1, TC2		★	640 332	640 332	640 332
	Outer, .086" thk.	6	★	640 280	640 280	
	Outer, .089" thk.	6	★	631 809	631 809	
	Outer, .092" thk.	6	★	631 810	631 810	
	Outer, .095" thk.	6	★	640 331	640 331	
	Outer, .087" thk., Heavy Duty Trans., TC1, TC2		★	-----	2124 508	2124 508
	Outer, .090" thk., Heavy Duty Trans., TC1, TC2		★	-----	2124 509	2124 509
	Outer, .093" thk., Heavy Duty Trans., TC1, TC2		★	-----	2124 510	2124 510
	Outer, .096" thk., Heavy Duty Trans., TC1, TC2		★	-----	2124 511	2124 511
	Inner, TP2, TD2, w/426 cu. in. Engine.	8	1	-----	1921 472	
	Outer, TP2, TD2, w/426 cu. in. Engine.	8	2	-----	1921 481	
	Inner, TP2, TD2, w/4 Speed	8	1	-----	1921 472	
	Outer, TP2, TD2, w/4 Speed	8	1	-----	2408 094	
21-19-16	WASHER, TP2, TD2, w/4 Speed	8	1	-----	2408 095	

★ Indicates use as required. Numerals in parentheses () refer to notes. Printed in U.S.A.
 ☐ Indicates parts not listed in any previous parts book. Prices and specifications subject to change without notice.
 January 25, 1963. Page 21-13A * Indicates change or addition.

DE	PART NAME AND DESCRIPTION	CYL.	PER CAR	VALIANT DART	PLYMOUTH DODGE	CHRYSLER IMPERIAL
----	---------------------------	------	---------	--------------	----------------	-------------------

STANDARD TRANSMISSION

24-O TRANSMISSION COUNTERSHAFT - Cont'd

4-19	PLATE or WASHER, Roller Thrust, Heavy Duty Trans., TC1, TC2		1	----	2124 474	2124 474
	Rear, TP2, TD2, w/426 cu. in. Engine	8	1	----	1921 494	
	WASHER, Thrust, TP2, TD2, w/4 Speed	8	2	----	2408 080	
4-22	KEY, TC1, TC2		1	1635 293	1635 293	1635 293

25-O TRANSMISSION COUNTERSHAFT BEARING

5-2	ROLLER	6	44	666 927	666 927	
	Heavy Duty Trans., TC1, TC2		88	----	2124 502	2124 502
	TP2, TD2, w/426 cu. in. Engine	8	80	----	1921 495	
	TP2, TD2, w/4 Speed.	8	80	----	1921 495	
15-4	SPACER	6	1	697 812	697 812	
	Heavy Duty Trans., TC1, TC2		1	----	2124 473	2124 473
	TP2, TD2, w/426 cu. in. Engine	8	1	----	1921 496	
	TP2, TD2, w/4 Speed	8	1	----	1921 496	
25-6	WASHER or RING, Roller Thrust	6	2	1630 878	1630 878	
	Heavy Duty Trans., TC1, TC2		4	----	2124 506	2124 506
	TP2, TD2, w/426 cu. in. Engine	8	4	----	1921 497	
	TP2, TD2, w/4 Speed	8	6	----	1921 497	

-29-O TRANSMISSION CASE COVER OR HOUSING

29-3	COVER	6	1	1949 345	1949 345	
	Heavy Duty Trans., TC1, TC2		1	----	2124 465	2124 465
	HOUSING, TP2, TD2, w/426 cu. in. Engine	8	1	----	*2464 238	
	HOUSING, TP2, TD2, w/4 Speed	8	1	----	2408 118	
29-25	GASKET, Cover	6	1	1949 346	1949 346	
	Cover, Heavy Duty Trans., TC1, TC2		1	----	2124 466	2124 466
	Housing, TP2, TD2, w/426 cu. in. Engine	8	1	----	1921 507	
	Housing, TP2, TD2, w/4 Speed	8	1	----	1921 507	

-30-O TRANSMISSION GEARSHIFT LEVER AND RODS

-30-2	LEVER, w/KNOB, TP1, TP2, TD1, TD2		1	E2405 009	E2405 009	
	LEVER, TP2, TD2, w/426 cu. in. Engine, TC2-300J	8	1	----	2409 414	2409 414
	TP2, TD2, w/4 Speed Trans.	8	1	----	2409 414	
	LEVER, w/FORK, TA3, TC1, TC2, except 300J	8	1	----	2203 480	2203 480
1-30-5	INSULATOR		1	*2265 662	*2265 662	
1-30-6	KNOB, TA3, TC1, TC2 except 300J	8	1	----	2208 140	2208 140
	TP2, TD2, w/426 cu. in. Engine, TC2-300J	8	1	----	2405 486	2405 486
	TP2, TD2, w/4 Speed Trans.	8	1	----	2409 413	
1-30-315	PLATE, Control Bell Crank to Floor Pan Bracket, TA3, TC1, TC2 except 300J	8	1	----	2203 483	2203 483
1-30-316	BRACKET, Control Bell Crank to Extension, TA3, TC1, TC2 except 300J	8	1	----	2203 498	2203 498
	Control Bell Crank to Floor, TA3, TC1, TC2 except 300J	8	1	----	2208 189	2208 189
1-30-317	SPACER, Control Bell Crank to Extension, TA3, TC1, TC2 except 300J	8	2	----	6022 279	6022 279

★ Indicates use as required.

Numerals in parentheses () refer to notes.

Printed in U.S.A.

⊠ Indicates parts not listed in any previous parts book.

Prices and specifications subject to change without notice.

Jan. 3, 1964 Supersedes Dec. 14, 1962.

* Indicates change or addition.

CODE	PART NAME AND DESCRIPTION	C Y L.	PER CAR	VALIANT DART	PLYMOUTH DODGE	CHRYSLER IMPERIAL
------	---------------------------	--------------	------------	-----------------	-------------------	----------------------

STANDARD TRANSMISSION

21-30-0 TRANSMISSION GEARSHIFT LEVER AND RODS - Cont'd

21-30-407	MECHANISM, Gearshift Control, TP2, TD2, w/4 Speed Trans.	8	1	----	2404 899	
	TP2, TD2, w/426 cu. in. Engine, TC2-300J . . .	8	1	----	2405 482	2405 482
	WASHER	8	1	----	6023 050	6023 050
21-30-410	SEAL, Control Lever Boot, TP2, TD2, w/426 cu. in. Engine	8	1	----	2405 498	
	TP2, TD2, w/4 Speed Trans.	8	1	----	2405 498	
21-30-411	RING, Selector Pivot Pin Retainer, TA3, TC2-300J .	8	2	----	2405 471	2405 471
21-30-413	BOOT, Control Lever, TP2, TD2, w/426 cu. in. Engine	8	1	----	2405 497	
	TP2, TD2, w/4 Speed Trans.	8	1	----	2405 497	
	Upper, TA3, TC1, TC2, except 300J	8	1	----	2260 856	2260 856
	Lower, TA3, TC1, TC2, except 300J	8	1	----	2074 506	2074 506
	w/SEAL, TC2-300J	8	1	----	----	2460 412
21-30-414	RING, Upper Boot, TA3, TC1, TC2 except 300J . .	8	1	----	2073 554	2073 554
	COVER, Boot, TP2, TD2, w/426 cu. in. Engine, TC2-300J.	8	1	----	2405 496	2460 414
	COVER, Boot, TP2, TD2, w/4 Speed Trans. . . .	8	1	----	2405 496	
21-30-415	RING, Shaft Lock, TA3, TC1, TC2 except 300J . .	8	1	----	1946 343	1946 343
21-30-416	SUPPORT, Gearshift Control Lever, TA3, TC1, TC2 except 300J	8	1	----	2208 188	2208 188
	SUPPORT, Floor Pan Gearshift Cover, w/T PLATE, TA3, TC1, TC2 except 300J	8	1	----	2245 047	2245 047
	PLATE, Gearshift Control Mechanism Mounting, TP2, TD2, w/4 Speed Trans.	8	1	----	2405 494	
	TP2, TD2, w/426 cu. in. Engine, TC2-300J . . .	8	1	----	2405 490	2405 491
21-30-417	PIN, Control Lever, TA3, TC1, TC2 except 300J .	8	1	----	2073 553	2073 553
21-30-418	ROD, Control, First and Reverse, TP2, TD2, w/426 cu. in. Engine	8	1	----	2405 489	
	Second and Third, TP2, TD2, w/426 cu. in. Engine	8	1	----	2405 488	
	First and Reverse, TA3, TC1, TC2 except 300J .	8	1	----	2203 493	2203 493
	Front, Second and Third, TA3, TC1, TC2 except 300J	8	1	----	2203 494	2203 494
	Rear, Second and Third, TA3, TC1, TC2 except 300J	8	1	----	2203 488	2203 488
	First and Reverse, TC2-300J	8	1	----	----	2405 493
	Second and Third, TC2-300J	8	1	----	----	2405 492
	First and Second, TP2, TD2, w/4 Speed Trans. .	8	1	----	2404 897	
	Third and Fourth, TP2, TD2, w/4 Speed Trans. .	8	1	----	2404 896	
	Reverse, TP2, TD2, w/4 Speed Trans.	8	1	----	2404 898	
21-30-420	LEVER, Control Rod, TA3, TC1, TC2 except 300J	8	2	----	2203 475	2203 475
21-30-421	SHAFT, Gearshift Control Lever, TA3, TC1, TC2 except 300J	8	1	----	2073 555	2073 555
21-30-422	DIVIDER, Lever Rod, TA3, TC1, TC2 except 300J	8	1	----	2073 557	2073 557
21-30-423	BUSHING, Lever Hub, TA3, TC1, TC2 except 300J	8	2	----	2073 558	2073 558
	Lever Shaft, TA3, TC1, TC2 except 300J	8	2	----	2073 556	2073 556

★ Indicates use as required.

Numerals in parentheses () refer to notes.

Printed in U.S.A.

☐ Indicates parts not listed in any previous parts book.

Prices and specifications subject to change without notice.

* Indicates change or addition.

Page 21-15

Jan. 3, 1964 Supersedes Dec. 14, 1962.

CODE	PART NAME AND DESCRIPTION	C Y L.	PER CAR	VALIANT DART	PLYMOUTH DODGE	CHRYSLER IMPERIAL
------	---------------------------	--------------	------------	-----------------	-------------------	----------------------

STANDARD TRANSMISSION

21-30-0 TRANSMISSION GEARSHIFT LEVER AND RODS - Cont'd

21-30-425	SCREW, Lever Pivot, Rear, TA3, TC1, TC2 except 300J	8	1	----	2074 526	2074 526
	Front, TA3, TC1, TC2 except 300J	8	1	----	2074 525	2074 525
	Bracket Stop, TP2, TD2, w/426 cu. in. Engine, TC2-300J.	8	2	----	2405 473	2405 473
	Gearshift Control Mechanism Mounting Plate, TP2, TD2, w/4 Speed Trans.	8	2	----	2409 404	
	Mechanism Mounting Plate, TP2, TD2, w/4 Speed Trans., TC2-300J	8	1	----	2409 402	2409 401
	Mechanism Mounting Plate, TP2, TD2, w/426 cu. in. Engine	8	1	----	2409 403	
21-30-426	WASHER, Lever Shaft, Plain, TA3, TC1, TC2 except 300J	8	2	----	2073 574	2073 574
	Control Rod, Plain, TP2, TD2, w/426 cu. in. Engine, TA3, TC1, TC2 except 300J	8	★	----	631 217	631 217
	Control Rod Swivel Spring, TA3, TC1, TC2, except 300J	8	★	----	391 888	391 888
	Control Rod Rear Swivel Clamp, Second and Third, TC1, TC2 except 300J	8	1	----	----	6022 691
	Control Rod, Plain, TP2, TD2, w/4 Speed Trans. Mechanism Mounting Plate, TP2, TD2, w/426 cu. in. Engine, TC2-300J	8	★	----	631 217	
	Rod Swivel, TC2-300J	8	1	----	6023 050	6023 050
		8	★	----	632 258	632 258
21-30-427	SPRING, Lever, TA3, TC1, TC2 except 300J . . .	8	1	----	2073 565	2073 565
21-30-428	SWIVEL, Rod, TP2, TD2, w/426 cu.in. Engine, TC2-300J	8	2	----	2409 408	2409 408
	TP2, TD2, w/4 Speed Trans.	8	2	----	2409 408	
	First and Reverse, TA3, TC1, TC2 except 300J	8	1	----	2074 521	2074 521
	Second and Third, TA3, TC1, TC2 except 300J .	8	1	----	2074 535	2074 535
	Interlock, Police and Taxi	6	1	----	*2404 859	
21-30-429	CLAMP, Rear Swivel, Second and Third, TA3, TC1, TC2 except 300J	8	1	----	2074 543	2074 543
	Interlock, Taxi and Police	6	1	----	2204 274	
21-30-430	GROMMET, Gearshift Control Bell Crank Bushing, TA3, TC1, TC2 except 300J	8	1	----	2074 539	2074 539
21-30-431	BUSHING, Bell Crank, TA3, TC1, TC2 except 300J	8	1	----	2074 553	2074 553
21-30-432	SPRING, Control Bell Crank to Trans. Extension, TA3, TC1, TC2 except 300J	8	1	----	2074 534	2074 534
21-30-433	CLIP, Rod, TA3, TC1, TC2 except 300J	8	★	----	1137 669	1137 669
	TP2, TD2, w/426 cu. in. Engine, TC2-300J . . .	8	★	----	1137 669	1137 669
	TP2, TD2, w/4 Speed Trans.	8	★	----	1137 669	
21-30-435	STUD, Bell Crank to Trans. Extension Bracket, TA3, TC1, TC2 except 300J	8	1	----	2074 508	2074 508
21-30-436	LINK or BELL CRANK, Control, w/BUSHING, TA3, TC1, TC2 except 300J	8	1	----	2203 495	2203 495

★ Indicates use as required.

Numerals in parentheses () refer to notes.

Printed in U.S.A.

☐ Indicates parts not listed in any previous parts book.

Prices and specifications subject to change without notice.

Jan. 3, 1964 Supersedes Dec. 14, 1962.

Page 21-16

* Indicates change or addition.

CODE	PART NAME AND DESCRIPTION	CYL.	PER CAR	VALIANT DART	PLYMOUTH DODGE	CHRYSLER IMPERIAL
------	---------------------------	------	---------	--------------	----------------	-------------------

STANDARD TRANSMISSION

21-30-O TRANSMISSION GEARSHIFT LEVER AND RODS - Cont'd

21-30-437	WASHER, Bell Crank Bushing, TA3, TC1, TC2 except 300J	8	1	----	2074 554	2074 554
21-30-438	PIN, Bell Crank to Floor Pan Bracket, TA3, TC1, TC2 except 300J	8	1	----	2074 547	2074 547

21-34-O TRANSMISSION GEARSHIFT RAIL

21-34-42	PIN, Interlock, TC1, TC2		1	1949 356	1949 356	1949 356
	TP2, TD2, w/426 cu. in. Engine	8	1	----	1921 522	
	TP2, TD2, w/4 Speed	8	1	----	1921 522	
21-34-45	SLEEVE, Interlock, TC1, TC2		1	1949 355	1949 355	1949 355
	Thin, TP2, TD2, w/426 cu. in. Engine	8	★	----	1921 518	
	Medium, TP2, TD2, w/426 cu. in. Engine	8	★	----	1921 519	
	Thick, TP2, TD2, w/426 cu. in. Engine	8	★	----	1921 520	
	Extra Thick, TP2, TD2, w/426 cu. in. Engine	8	★	----	1921 521	
	Thin, TP2, TD2, w/4 Speed	8	★	----	1921 518	
	Medium, TP2, TD2, w/4 Speed	8	★	----	1921 519	
	Thick, TP2, TD2, w/4 Speed	8	★	----	1921 520	
	Extra Thick, TP2, TD2, w/4 Speed	8	★	----	1921 521	
21-34-47	SPRING, Interlock Ball, TC1, TC2		1	*2205 131	*2205 131	*2205 131
	TP2, TD2, w/426 cu. in. Engine	8	1	----	1921 523	
	Reverse Lever Poppet Ball, TP2, TD2, w/4 Speed	8	1	----	2408 093	
	Gearshift Interlock Ball, TP2, TD2, w/4 Speed	8	1	----	1921 523	

21-39-O TRANSMISSION GEARSHIFT FORK

21-39-3	FORK, Low and Reverse	6	1	1949 351	1949 351	
	Second and Direct	6	1	2125 059	2125 059	
	Low and Reverse, Heavy Duty Trans., TC1, TC2		1	----	2124 463	2124 463
	Second and Direct, Heavy Duty Trans., TC1, TC2		1	----	2124 462	2124 462
	Low and Reverse, TP2, TD2, w/426 cu. in. Engine	8	1	----	1921 517	
	Second and Direct, TP2, TD2, w/426 cu. in. Engine	8	1	----	1921 516	
	First and Second, TP2, TD2, w/4 Speed	8	1	----	2408 117	
	Third and Direct, TP2, TD2, w/4 Speed	8	1	----	2408 117	
	Reverse, TP2, TD2, w/4 Speed	8	1	----	2408 122	

21-42-O TRANSMISSION REMOTE CONTROL GEARSHIFT

21-42-11	LEVER, Low and Reverse	6	1	1949 347	1949 347	
	Second and Direct	6	1	1949 352	1949 352	
	Low and Reverse, Heavy Duty Trans., TC1, TC2		1	----	2124 523	2124 523
	Second and Direct, Heavy Duty Trans., TC1, TC2		1	----	2124 494	2124 494
	Low and Reverse, TP2, TD2, w/426 cu. in. Engine	8	1	----	1923 508	
	Second and Direct, TP2, TD2, w/426 cu. in. Engine	8	1	----	1921 508	
	First and Second, TP2, TD2, w/4 Speed	8	1	----	2408 114	
	Third and Direct, TP2, TD2, w/4 Speed	8	1	----	2408 123	
	Reverse, TP2, TD2, w/4 Speed	8	1	----	2408 119	
21-42-16	PIN, TC1, TC2		2	6022 161	6022 161	6022 161
21-42-23	LEVER, Operating, Low and Reverse	6	1	2204 903	2204 907	
	Second and Direct	6	1	2204 904	2208 160	
	Interlock, Heavy Duty Trans., Low and Reverse Police and Taxi	6	1	----	2400 716	

★ Indicates use as required. Numerals in parentheses () refer to notes. Printed in U.S.A.
 ☐ Indicates parts not listed in any previous parts book. Prices and specifications subject to change without notice.
 * Indicates change or addition. Page 21-17 Jan. 3, 1964 Supersedes Dec. 14, 1962.

CODE	PART NAME AND DESCRIPTION	CYL.	PER CAR	VALIANT DART	PLYMOUTH DODGE	CHRYSLER IMPERIAL
------	---------------------------	------	---------	--------------	----------------	-------------------

STANDARD TRANSMISSION

21-42-0 TRANSMISSION REMOTE CONTROL GEARSHIFT - Cont'd

21-42-23	LEVER - Cont'd					
	Low and Reverse, Heavy Duty Trans., Police and Taxi, Connects w/Pawl.	6	1	----	*2400	562
	Low and Reverse, TP2, TD2-L, TD2-M, TD2-H, w/318 cu.in. Engine	8	1	----	2204	907
	Low and Reverse, TP2-L, TP2-M, TP2-H, TD2-L, TD2-M, TD2-H, Heavy Duty Trans., Police and Taxi, TP2-P w/361 cu.in. Engine, TD2-P	8	1	----	2204	932
	Second and Direct, TP2, TD2	8	1	----	2208	160
	Low and Reverse, TP2, TD2, w/426 cu.in. Engine	8	1	----	2408	155
	Second and Direct, TP2, TD2, w/426 cu.in. Engine	8	1	----	2408	154
	Low and Reverse, TA3, TC1, TC2 except 300J	8	1	----	2204	398
	Second and Direct, TA3, TC1, TC2 except 300J	8	1	----	2204	397
	Low and Reverse, TC2-300J	8	1	----	----	2408 157
	Second and Direct, TC2-300J	8	1	----	----	2408 156
	First and Second, TP2, TD2, w/4 Speed	8	1	----	2408	152
	Third and Fourth, TP2, TD2, w/4 Speed	8	1	----	2408	151
	Reverse, TP2, TD2, w/4 Speed	8	1	----	2408	153
	CLIP, Interlock Lever, Heavy Duty Trans., Police and Taxi	6	1	----	6025	071
	WASHER, Interlock Lever Spring, Heavy Duty Trans., Police and Taxi	6	1	----	6023	596
21-42-28	PIN, Low and Reverse Interlock Lever Pivot, Heavy Duty Trans., Police and Taxi	6	1	----	2400	568
21-42-29	PAWL, Low and Reverse, Interlock Lever, Heavy Duty Trans., Police and Taxi	6	1	----	2400	715
21-42-31	SEAL, Gearshift Lever Shaft, TC1, TC2		2	1949 350	1949	350
	TP2, TD2, w/426 cu. in. Engine, TP2, TD2, w/4 Speed	8	2	----	1921	513
21-42-42	BUSHING, Operating Lever Grommet		2	1676 200	1676	200
21-42-43	GROMMET, Operating Lever		2	1941 699	1941	699

21-84-0 TRANSMISSION SPEEDOMETER CABLE SHAFT AND HOUSING

21-84-1	HOUSING, w/SHAFT, 58 43/64" lgh.	6	1	2426 163		
	78" lgh., TP1, TP2, TD1, TD2		1	----	2290	461
	70" lgh., TA3	8	1	----	2257	840
	78" lgh., TP2, TD2, w/3.91 ratio and Adapter (also specify 1 of 1370 460)	8	1	----	*1819	972
21-84-4	SHAFT, 58 43/64" lgh.	6	1	2426 164		
	78" lgh., TP1, TP2, TD1, TD2		1	----	2290	471
	64 43/64" lgh., TA3	8	1	----	2209	229
	76" lgh., TP2, TD2, w/3.91 ratio and Adapter	8	1	----	E2257	143
21-84-7	CLAMP, Cable		1	2204 942	2204	942
21-84-28	SEAL, Speedometer Cable Adapter		1	1942 259	1942	259

★ Indicates use as required.

Numerals in parentheses () refer to notes.

Printed in U.S.A.

☐ Indicates parts not listed in any previous parts book.

Prices and specifications subject to change without notice.

* Indicates change or addition.

CODE	PART NAME AND DESCRIPTION	CYL	PER CAR	VALIANT DART	PLYMOUTH DODGE	CHRYSLER IMPERIAL
------	---------------------------	-----	---------	--------------	----------------	-------------------

STANDARD TRANSMISSION

21-85-0 TRANSMISSION SPEEDOMETER PINION AND GEAR

21-85-4	GEAR, Speedometer Drive, TP2, TD2, w/426 cu. in. Engine	8	1	----	----	2400 437
	TP2, TD2, w/4 Speed	8	1	----	----	2408 023

21-85-5 PINION STANDARD TRANSMISSION - TV1, TL1, TP1, TD1 - A903

Tire Size	2.93 to 1 Ratio Pinion Teeth	3.23 to 1 Ratio Pinion Teeth	3.31 to 1 Ratio Pinion Teeth	3.55 to 1 Ratio Pinion Teeth	3.91 to 1 Ratio Pinion Teeth
6.50 x 13	2204 356 17 O	2204 358 19 DB	----	2204 359 20 G	2204 359 20 G
6.70 x 13	----	2204 356 17 O	----	2204 358 19 DB	2204 360 21 GR
7.00 x 14	----	*2204 357 18 DP	2204 357 18 DP	2204 358 19 DB	2204 360 21 GR
7.50 x 14	----	2204 356 17 O	2204 356 17 O	2204 358 19 DB	2204 360 21 GR
6.70 x 15	----	2204 356 17 O	2204 356 17 O	2204 357 18 DP	2204 359 20 G
6.40 x 15	----	2204 356 17 O	----	----	----

COLORS OF PINIONS

DB-DARK BLUE O-ORANGE DP-DARK PURPLE G-GREEN GR-GRAY

HEAVY DUTY STANDARD TRANSMISSION - TP1, TP2, TD1, TD2, TA3, TC1, TC2 - A745
w/7 TOOTH SPEEDOMETER GEAR USED UP TO DATE 11-9-62 STAMPED ON TRANS. COVER

Tire Size	3.23 to 1 Ratio Pinion Teeth	3.31 to 1 Ratio Pinion Teeth	3.55 to 1 Ratio Pinion Teeth	3.91 to 1 Ratio Pinion Teeth
7.00 x 14	1949 402 18 N	1949 402 18 N	1949 403 19 R	1949 405 21 LB
7.50 x 14	1949 401 17 LP	1949 401 17 LP	1949 403 19 R	1949 405 21 LB
8.00 x 14	1949 401 17 LP	----	----	----
8.50 x 14	1949 401 17 LP	----	----	----
6.70 x 15	1949 401 17 LP	1949 401 17 LP	1949 402 18 N	1949 404 20 B
7.10 x 15	1949 402 18 N	----	----	----
7.60 x 15	1949 401 17 LP	----	1949 402 18 N	1949 403 19 R
6.50 x 13	1949 403 19 R	----	1949 404 20 B	1949 406 22 Y

COLORS OF PINIONS

N-NATURAL LP-LIGHT PURPLE R-RED LB-LIGHT BLUE B-BLACK Y-YELLOW

HEAVY DUTY STANDARD TRANSMISSION-TP1, TP2, TD1, TD2, TA3, TC1, TC2 - A745, w/8 TOOTH
SPEEDOMETER GEAR USED AFTER DATE 11-9-62 STAMPED ON TRANS. COVER

Tire Size	2.93 to 1 Ratio Pinion Teeth	3.23 to 1 Ratio Pinion Teeth	3.31 to 1 Ratio Pinion Teeth	3.55 to 1 Ratio Pinion Teeth	3.91 to 1 Ratio Pinion Teeth
7.00 x 14	1949 402 18 N	1949 404 20 B	1949 405 21 LB	1949 406 22 Y	1949 406 22 Y(1)
7.50 x 14	1949 402 18 N	1949 403 19 R	1949 404 20 B	1949 405 21 LB	1949 405 21 LB(1)
8.00 x 14	----	1949 403 19 R	----	----	----
8.50 x 14	----	1949 403 19 R	----	----	----
6.70 x 15	1949 401 17 LP	1949 403 19 R	1949 404 20 B	1949 405 21 LB	1949 405 21 LB(1)
7.10 x 15	----	1949 403 19 R	----	----	----
7.60 x 15	----	1949 402 18 N	----	1949 404 20 B	1949 406 22 Y

COLOR OF PINIONS

N-NATURAL LP-LIGHT PURPLE R-RED LB-LIGHT BLUE B-BLACK Y-YELLOW

NOTE 1: USE WITH 2464 240 ADAPTER

* Indicates use as required. Numerals in parentheses () refer to notes. Printed in U.S.A.
 □ Indicates parts not listed in any previous parts book. Prices and specifications subject to change without notice.
 * Indicates change or addition.

STANDARD TRANSMISSION

21-85-O TRANSMISSION SPEEDOMETER PINION AND GEAR - Cont'd

21-85-5 PINION STANDARD TRANSMISSION - TP2, TD2 - w/426 cu. in. Engine - T85

3.91 to 1 Ratio
Pinion Teeth

7.50 x 14 2204 357 18 DP

COLOR OF PINION

DP-DARK PURPLE

4 SPEED-STANDARD TRANSMISSION TP2 - TD2 - T10

Tire Size	3.23 to 1 Ratio Pinion Teeth	3.55 to 1 Ratio Pinion Teeth
7.00 x 14	2204 357 18 DP	2204 359 20 G
7.50 x 14	2204 356 17 O	2204 358 19 DB

COLORS OF PINIONS

DB-DARK BLUE

O-ORANGE

G-GREEN

DP-DARK PURPLE

CODE	PART NAME AND DESCRIPTION	CYL.	PER CAR	VALIANT DART	PLYMOUTH DODGE	CHRYSLER IMPERIAL
21-85-9	ADAPTER, w/3.91 ratio	6	1	*2291 133		
	TA3, TC1, TC2	8	1	----	2291 140	2291 140
	TP2, TD2, w/8 Tooth Speedometer Gear		1	----	B2464 240	
21-85-22	SEAL, Adapter, TC1, TC2		1	*2426 332	2426 332	2426 332
21-85-29	SNAP RING, Speedometer Drive Gear, TP2, TD2, w/426 cu. in. Engine, TP2, TD2, w/4 Speed . .	8	2	----	6023 560	
21-85-56	SEAL, Pinion		1	2124 328	2124 328	2124 328
21-85-61	CLIP, Pinion		1	1942 174	1942 174	1942 174

NOTES

★ Indicates use as required. Numerals in parentheses () refer to notes. Printed in U.S.A.
 □ Indicates parts not listed in any previous parts book. Prices and specifications subject to change without notice.
 Jan. 3, 1964 Supersedes Jan. 25, 1963. * Indicates change or addition.

CODE	PART NAME AND DESCRIPTION	CYL	PER CAR	VALIANT DART	PLYMOUTH DODGE	CHRYSLER IMPERIAL
------	---------------------------	-----	---------	--------------	----------------	-------------------

AUTOMATIC 3-SPEED TRANSMISSION

21-01-O TRANSMISSION SETS OR PACKAGES

21-01-3	SEAL and GASKET PACKAGE TP1, TD1, Taxi and Police, TP2, TD2, TA3 . . .	6	1	B2421 737 ----	B2421 737 B2421 735	B2421 735
---------	---	---	---	-------------------	------------------------	-----------

21-02-O TRANSMISSION ASSEMBLY

21-02-1	TRANSMISSION Heavy Duty w/225 cu.in. Engine TP2, TD2, w/318 cu. in. Engine. Taxi and Police TP2, TD2, TA3, TC1, w/361 cu.in. Engine 2 Barrel Carburetor, TC2, TC3, TY1 TP2, TD2, w/383 cu.in. Engine, TA3, TC1, TC2, w/413 cu.in. Engine, 4 Barrel Carburetor TP2, TD2, w/426 cu. in. Engine, TC2-300J . . .	6 6 6 6 8 6 8 8 8	1 1 1 1 1 1 1 1 1	2408 001 2408 002 2408 002 ---- ---- ---- ---- ---- ----	2408 003 2408 004 2464 099 2408 005 2408 006 *2464 426	2408 005 2408 006 *2464 426
21-02-8	BAFFLE, Vent, TP1, TD1, Taxi and Police, TP2, TD2, TA3		1	----	2400 479	2400 479

21-03-O TRANSMISSION CASE

21-03-1	CASE Taxi and Police TP2, TD2, w/318 cu.in. Engine TP2, TD2, w/361, 383 and 426 cu. in. Engine TA3	6 6 8 8 8	1 1 1 1 1	2400 099 ---- ---- ---- ----	2400 099 2400 130 2400 130 2400 131 2400 131	2400 131
21-03-2	PLATE ADAPTER, Taxi and Police	6	1	----	2125 013	
21-03-6	COVER, Case Torque Converter TP2, TD2, w/318 cu.in. Engine TP2, TD2, w/361, 383 and 426 cu. in. Engine, TA3	6 8 8	1 1 1	1949 767 ---- ----	1949 767 2125 057 *1942 248	*1942 248
21-03-7	COVER, Torque Converter Drain, TP2, TD2, w/318 cu.in. Engine	8	1	----	2204 728	
21-03-23	SCREW, Bracket to Cylinder Block Bracket to Case Case to Cylinder Block Cylinder Block to Transmission Case Cylinder Block to Transmission Case Cylinder Block to Transmission Case Plate to Trans., Taxi and Police Trans. to Plate, Taxi and Police Cylinder Block to Adapter, Taxi and Police Cylinder Block to Adapter, Taxi and Police	6 8 6 6 8 6 6 6 6	2 2 ★ 1 2 2 2 4 2 1	6023 143 ---- 6023 187 2124 411 2124 410 ---- ---- ---- ---- ----	6023 143 6023 143 6023 187 2124 411 2124 410 6012 042 6012 042 6023 187 2124 410 2124 411	6023 187 6012 042
21-03-28	BRACKET or STRUT, Case to Cylinder Block, Left Side Left Side, TP1, TD1, Taxi and Police, TP2, TD2 Right Side, TP1, TD1, Taxi and Police, TP2, TD2	6	1 1 1	1949 701 ---- ----	1949 701 2204 707 2204 702	
21-03-40	PIN, Adapter Plate Dowel, Taxi and Police	6	2	----	1533 923	

★ Indicates use as required. Numerals in parentheses () refer to notes. Printed in U.S.A.
 □ Indicates parts not listed in any previous parts book. Prices and specifications subject to change without notice.
 * Indicates change or addition. Jan. 3, 1964 Supersedes Dec. 14, 1962.

CODE	PART NAME AND DESCRIPTION	CYL.	PER CAR	VALIANT DART	PLYMOUTH DODGE	CHRYSLER IMPERIAL
------	---------------------------	------	---------	--------------	----------------	-------------------

AUTOMATIC 3-SPEED TRANSMISSION

21-04-O TRANSMISSION CASE EXTENSION

21-04-1	EXTENSION	6	1	2400 134	2400 136	
	w/225 cu.in. Engine	6	1	2400 136		
	Heavy Duty	6	1	2400 136		
	TP1, TD1, Taxi and Police, TP2, TD2, TA3		1	----	2400 065	2400 065
21-04-2	GASKET	6	1	2205 322	2205 322	
	TP1, TD1, Taxi and Police, TP2, TD2, TA3		1	----	2400 064	2400 064
21-04-6	SCREW, Extension, w/WASHER, Short	5		*6023 514	*6023 514	*6023 514
	Long	1		*6023 945	*6023 945	*6023 945
21-04-11	BUSHING	6	1	2124 607	2124 607	
	BEARING, TP1, TD1, Taxi and Police, TP2, TD2, TA3		1	----	1672 194	1672 194
21-04-12	SNAP RING, Bearing, TP1, TD1, Taxi and Police, TP2, TD2, TA3		1	----	1736 432	1736 432

21-05-O TRANSMISSION OUTPUT SHAFT

21-05-1	SHAFT, w/PLUG	6	1	2421 270	2421 269	
	TP1, TD1, Taxi and Police, TP2, TD2, TA3		1	----	2400 990	2400 990
21-05-12	OIL SEAL, Output Shaft	6	1	1942 401	1942 401	
	TP1, TD1, Taxi and Police, TP2, TD2, TA3		1	----	2205 080	2205 080
21-05-19	SNAP RING, Output Shaft	6	1	6022 859	6022 859	
	TP1, TD1, Taxi and Police, TP2, TD2, TA3		1	----	6022 816	6022 816
21-05-35	WASHER, Output Shaft Thrust, .052" thk., Natural, Fiber	6	★	1942 454	1942 454	
	.068" thk., Red, Fiber	6	★	1942 455	1942 455	
	.083" thk., Black, Fiber	6	★	1942 456	1942 456	
	TP1, TD1, Taxi and Police, TP2, TD2, TA3		1	----	2125 104	2125 104

21-30-O TRANSMISSION GEARSHIFT BUTTON AND CABLE

21-30-28	SOCKET, Selector, w/CABLE	6	1	2291 907		
	TP1, TP2, TD1, TD2		1	----	*2291 689	
	TA3	8	1	----	*2257 275	
	TC1, TC2, TC3	8	1	----		2291 907
	TY1	8	1	----		2197 939
21-30-320	HOUSING, w/SLIDES		1	2401 985	2401 985	2401 985
21-30-324	INSULATOR, Housing, TA3		1	*2405 223	*2405 223	
21-30-329	BRACKET, Reverse Slide Light Switch		1	2123 249	2123 249	2123 249
21-30-336	BUTTON, w/COVER, Neutral	6	1	2266 417		
	Drive	6	1	2266 418		
	First	6	1	2266 420		
	Second	6	1	2266 419		
	Reverse	6	1	2266 416		
	BUTTON, w/COVER, Neutral, TP1, TP2		1	----	2401 988	
	Drive, TP1, TP2		1	----	2260 859	
	First, TP1, TP2		1	----	2260 861	
	Second, TP1, TP2		1	----	2260 860	
	Reverse, TP1, TP2		1	----	2260 857	

★ Indicates use as required.

Numerals in parentheses () refer to notes.

Printed in U.S.A.

☐ Indicates parts not listed in any previous parts book.

Prices and specifications subject to change without notice.

CODE	PART NAME AND DESCRIPTION	CYL	PER CAR	VALIANT DART	PLYMOUTH DODGE	CHRYSLER IMPERIAL
------	---------------------------	-----	---------	--------------	----------------	-------------------

AUTOMATIC 3-SPEED TRANSMISSION

21-30-O TRANSMISSION GEARSHIFT BUTTON AND CABLE - Conf'd

21-30-336	BUTTON, w/COVER, Neutral, TD1, TD2		1	----	2401 987	
	Drive, TD1, TD2		1	----	2208 184	
	First, TD1, TD2		1	----	2208 186	
	Second, TD1, TD2		1	----	2208 185	
	Reverse, TD1, TD2		1	----	2208 182	
	BUTTON, w/COVER, Neutral, TA3		1	----	2405 212	
	Drive, TA3		1	----	2405 213	
	First, TA3		1	----	2405 215	
	Second, TA3		1	----	2405 214	
	Reverse, TA3		1	----	2405 211	
	BUTTON, w/COVER, Neutral, TC1, TC2, TC3	8	1	----	----	2260 941
	Drive, TC1, TC2, TC3	8	1	----	----	2260 942
	First, TC1, TC2, TC3	8	1	----	----	2260 944
	Second, TC1, TC2, TC3	8	1	----	----	2260 943
	Reverse, TC1, TC2, TC3	8	1	----	----	2260 940
	BUTTON, w/COVER, Neutral, TY1	8	1	----	----	2401 281
	Drive, TY1	8	1	----	----	2401 282
	First, TY1	8	1	----	----	2401 284
	Second TY1	8	1	----	----	2401 283
	Reverse, TY1	8	1	----	----	2401 280
21-30-340	BUMPER, Slide		4	1731 143	1731 143	1731 143
21-30-345	SPRING, Slide		5	1639 970	1639 970	1639 970
21-30-365	CABLE, Control, 42" lgh., TD1, TD2, w/318 cu. in. Eng.		1	2266 403	2266 403	
	44" lgh., TP1, TP2, w/318 cu. in. Engine		1	----	2266 404	
	48" lgh., TP2, TD2, w/361, 383 and 426 cu. in. Engine.	8	1	----	*2266 405	
	59" lgh., TA3, TC1, TC2, TC3	8	1	----	2405 477	2405 477
	48" lgh., TY1	8	1	----	----	2266 405
	46" lgh., TY1	8	1	----	----	*2265 183
21-30-370	BRACKET, Cable, on Housing		1	1673 921	1673 921	1673 921
	TA3, TC1, TC2, TC3, on Strg. Housing	8	1	----	2405 476	2405 476
	TY1	8	1	----	----	2409 194
	CLIP.	6	1	⊠2409 452	----	----
21-30-375	FLANGE or WHEEL, Control Cable Adjusting		1	1856 492	1856 492	1856 492
21-30-390	SEAL, Cable, on Trans.		1	1316 813	1316 813	1316 813
21-30-392	ADAPTER, Control Cable, w/PIN		1	1941 636	1941 636	1941 636
21-30-394	SPRING, Control Cable Adapter		1	1673 184	1673 184	1673 184

21-84-O TRANSMISSION SPEEDOMETER CABLE SHAFT AND HOUSING

21-84-1	HOUSING, w/SHAFT, 58 43/64" lgh.	6	1	2426 163		
	78" lgh., TP1, TP2, TD1, TD2		1	----	2290 461	
	70" lgh., TA3	8	1	----	2257 840	2257 840
	31 3/8" lgh., w/Auto. Pilot, TA3	8	1	----	*1972 351	*1972 351
21-84-4	SHAFT, 58 43/64" lgh.	6	1	2426 164		
	78" lgh., TP1, TP2, TD1, TD2		1	----	2290 471	
	64 43/64" lgh., TA3	8	1	----	2209 229	2209 229
	w/Auto. Pilot, TA3, TC1, TC2, TC3	8	1	----	*1972 352	*1972 352
	28 5/32" lgh., w/Auto. Pilot, TY1	8	1	----	----	*1887 657
21-84-7	CLAMP, Cable		1	2204 942	2204 942	2204 942
21-84-28	SEAL, Cable Adapter		1	1942 259	1942 259	1942 259

★ Indicates use as required.

Numerals in parentheses () refer to notes.

Printed in U.S.A.

⊠ Indicates parts not listed in any previous parts book.

Prices and specifications subject to change without notice.

* Indicates change or addition.

AUTOMATIC 3-SPEED TRANSMISSION

21-85-O TRANSMISSION SPEEDOMETER PINION

21-85-5 PINION

6 CYLINDER CARS ONLY

A904

Tire Size	2.76 to 1 Ratio Pinion Teeth	2.93 to 1 Ratio Pinion Teeth	3.23 to 1 Ratio Pinion Teeth	3.31 to 1 Ratio Pinion Teeth	3.55 to 1 Ratio Pinion Teeth	3.91 to 1 Ratio Pinion Teeth
6.50 x 13	-----	2204 356 17 O	2204 358 19 DB	-----	2204 359 20 G	2204 360 21 GR
6.70 x 13	-----	2204 355 16 B	2204 356 17 O	-----	2204 358 19 DB	2204 360 21 GR
7.00 x 14	*2204 355 *16 B	2204 355 16 B	2204 357 18 DP	2204 357 18 DP	2204 358 19 DB	2204 360 21 GR
7.50 x 14	*2204 355 *16 B	2204 355 16 B	2204 356 17 O	2204 356 17 O	2204 358 19 DB	2204 360 21 GR
6.70 x 15	*2204 355 *16 B	2204 355 16 B	2204 356 17 O	2204 356 17 O	2204 357 18 DP	2204 359 20 G

*Use with 2291 278 Adapter

COLOR OF PINIONS

O-ORANGE B-BROWN DP-DARK PURPLE G-GREEN DB-DARK BLUE GR-GRAY

TP1, TD1, TAXI AND POLICE, TP2, TD2, TA3, TC1, TC2, TC3, TY1

A727

Tire Size	2.76 to 1 Ratio Pinion Teeth	2.93 to 1 Ratio Pinion Teeth	3.23 to 1 Ratio Pinion Teeth	3.55 to 1 Ratio Pinion Teeth	3.91 to 1 Ratio Pinion Teeth
7.00 x 14	2204 356 17 O	2204 357 18 DP	2204 359 20 G	*2204 359 *20 G	-----
7.50 x 14	2204 356 17 O	2204 357 18 DP	2204 358 19 DB	-----	*2204 360 *21 GR
8.00 x 14	2204 355 16 B	2204 356 17 O	2204 358 19 DB	-----	-----
8.50 x 14	2204 355 16 B	2204 356 17 O	2204 358 19 DB	-----	-----
9.00 x 14	-----	2204 355 16 B	2204 357 18 DP	-----	-----
6.70 x 15	2204 355 16 B	2204 356 17 O	2204 358 19 DB	-----	-----
7.10 x 15	-----	2204 356 17 O	2204 358 19 DB	-----	-----
7.60 x 15	-----	2204 355 16 B	2204 357 18 DP	2204 359 20 G	*2204 359 *20 G
7.50 x 15	-----	-----	-----	2204 358 19 DB	-----
8.20 x 15	-----	2204 355 16 B	-----	-----	-----

*Use with 2291 141 Adapter

COLOR OF PINIONS

O-ORANGE B-BROWN DP-DARK PURPLE G-GREEN DB-DARK BLUE GR-GRAY

CODE	PART NAME AND DESCRIPTION	C Y L.	PER CAR	VALIANT DART	PLYMOUTH DODGE	CHRYSLER IMPERIAL
21-85-9	ADAPTER, Drive Pinion, use w/2.76 ratio	6	1	-----	*2291 278	
21-85-22	SEAL, Drive Pinion Adapter	6	1	-----	2426 332	
	TP2, TD2, w/426 cu. in. Engine, TC2, 300J	8	1	-----	2426 332	2426 332
21-85-56	SEAL, Pinion		1	2124 328	2124 328	2124 328
21-85-61	CLIP, Pinion		1	1942 174	1942 174	1942 174

* Indicates use as required. Numerals in parentheses () refer to notes. Printed in U.S.A.
 □ Indicates parts not listed in any previous parts book. Prices and specifications subject to change without notice.
 Jan. 3, 1964 Supersedes Dec. 14, 1962. Page 21-24 * Indicates change or addition.

CODE	PART NAME AND DESCRIPTION	CYL	PER CAR	VALIANT DART	PLYMOUTH DODGE	CHRYSLER IMPERIAL
------	---------------------------	-----	---------	--------------	----------------	-------------------

AUTOMATIC 3-SPEED TRANSMISSION

21-113-O TRANSMISSION NEUTRAL STARTER SWITCH

21-113-24	SWITCH PACKAGE, w/WASHER and "O" RING, on Trans.		1	1704 283	1704 283	1704 283
21-113-28	"O" RING, Mounting		1	1316 849	1316 849	1316 849
21-113-29	WASHER, Mounting		1	1704 482	1704 482	1704 482

21-117-O TRANSMISSION OIL PUMP STRAINER

NOTE: See Code 9-46-27 for Tubes

21-117-1	STRAINER		1	1949 964	1949 964	1949 964
	FILTER, Oil, Attached to Oil Pan		1	2400 124	2400 124	2400 124
21-117-2	CLAMP, Oil Filter		1	2268 908	2268 908	2268 908
21-117-3	BRACKET, Oil Filter	6	1	2400 126	2400 126	
	TP1, TD1, Taxi and Police, TP2, TD2, TA3.		1	----	2400 078	2400 078

21-118-O TRANSMISSION OIL PUMP

21-118-6	ROTOR PACKAGE, Front Pump	6	1	2240 302	2240 302	
	Rear Pump	6	1	2196 795	2196 795	
	Front Pump, TP1, TD1, Taxi and Police, TP2, TD2, TA3		1	----	2275 497	2275 497
	Rear Pump, TP1, TD1, Taxi and Police, TP2, TD2, TA3		1	----	2275 496	2275 496
21-118-40	HOUSING, Front Pump, w/BUSHING	6	1	2204 712	2204 712	
	Rear Pump	6	1	1942 463	1942 463	
	Front Pump, w/PLUGS, TP1, TD1, Taxi and Police, TP2, TD2, TA3.		1	----	2400 492	2400 492
	Rear Pump, TP1, TD1, Taxi and Police, TP2, TD2, TA3, UP TO Trans. No. 681153		1	----	*1942 105	*1942 105
	Rear Pump, TP1, TD1, Police and Taxi, TP2, TD2, TA3, AFTER Trans. No. 681153.		1	----	*2464 383	*2464 383
21-118-42	OIL SEAL, Front Pump Housing, 2 1/4" O.D.	6	1	2124 705	2124 705	
	Front Pump, 2 5/8" O.D., TP1, TD1, Taxi and Police, TP2, TD2, TA3.		1	----	1942 020	1942 020
21-118-45	OIL SEAL, Front Pump Housing, 8 17/64" O.D.	6	1	2204 709	2204 709	
	10" O.D., TP1, TD1, Taxi and Police, TP2, TD2, TA3		1	----	1942 021	1942 021
21-118-47	BUSHING, Front Pump Housing	6	1	2204 953	2204 953	
	TP1, TD1, Taxi and Police, TP2, TD2, TA3.		1	----	2205 041	2205 041
21-118-53	COVER, Rear Pump Housing		1	1942 107	1942 107	1942 107
21-118-54	GASKET, Front Pump Housing, TP1, TD1, Taxi and Police, TP2, TD2, TA3		1	----	2124 846	2124 846
21-118-55	SCREW, Front Oil Pump Housing, w/WASHER		★	2124 600	2124 600	2124 600
21-118-57	SHIELD, Front Pump Housing Vent, TP1, TD1, Taxi and Police, TP2, TD2, TA3		1	----	2204 993	2204 993

★ Indicates use as required.

Numerals in parentheses () refer to notes.

Printed in U.S.A.

⊠ Indicates parts not listed in any previous parts book.

Prices and specifications subject to change without notice.

* Indicates change or addition.

Jan. 3, 1964 Supersedes Dec. 14, 1962.

CODE	PART NAME AND DESCRIPTION	CYL	PER CAR	VALIANT DART	PLYMOUTH DODGE	CHRYSLER IMPERIAL
------	---------------------------	-----	---------	--------------	----------------	-------------------

AUTOMATIC 3-SPEED TRANSMISSION

21-119-O TRANSMISSION OIL PAN

21-119-3	PAN, Oil	6	1	E2464 413	E2464 413	
	TP1, TD1, Taxi and Police, TP2, TD2, TA3 . . .		1	----	E2464 312	E2464 312
	SCREW		14	6023 355	6023 355	6023 355
21-119-5	GASKET, Oil Pan	6	1	2205 299	2205 299	
	TP1, TD1, Taxi and Police, TP2, TD2, TA3 . . .		1	----	2124 867	2124 867
21-119-11	PLUG, Oil Pan Drain		1	2268 564	2268 564	2268 564
21-119-12	GASKET, Drain Plug		1	2400 863	2400 863	2400 863
21-119-15	TUBE, Oil Filler	6	1	2204 641	2204 641	
	TP2, TD2, w/318 cu. in. Engine.		8	----	2204 788	
	TP2, TD2, w/361 and 383 cu. in. Engine.		8	----	2204 716	
	TP2, TD2, w/426 cu. in. Engine, TC2-300J		8	----	2400 652	2204 716
	TA3, TC1, TC2 except 300J, TC3, TY1.		8	----	2204 929	2204 929
	TP1, TD1, Taxi and Police		6	----	2204 788	
21-119-19	INDICATOR, Oil Level	6	1	2204 643	2204 643	
	TP1, TD1, Taxi and Police, TP2, TD2, TA3		1	----	2204 799	2204 799
	TP2, TD2, w/426 cu. in. Engine		8	----	2400 655	
21-119-25	SEAL, Oil Filler Tube		1	1316 815	1316 815	1316 815

21-129-O TRANSMISSION INPUT SHAFT AND TORQUE CONVERTER REACTION SHAFT

21-129-5	SHAFT, Input, w/Rear Clutch Piston RETAINER	6	1	2125 201	2125 201	
	SHAFT, Input	6	1	2125 200	2125 200	
	SHAFT, Input, w/BUSHING, TP1, TD1, Taxi and Police, TP2, TD2, TA3		1	----	2124 831	2124 831
21-129-6	BUSHING, Input Shaft, TP1, TD1, Taxi and Police, TP2, TD2, TA3		1	----	2205 242	2205 242
21-129-7	RING, Input Shaft Seal	6	2	1941 831	1941 831	
	TP1, TD1, Taxi and Police, TP2, TD2, TA3		2	----	1942 041	1942 041
	SNAP RING, Input Shaft		6	6022 859	6022 859	
21-129-10	SHAFT, Reaction, w/SUPPORT, 27T., 6 5/8" lgh.	6	1	1942 419	1942 419	
	27T., 6 5/8" lgh., TP1, TD1, Taxi and Police, TP2, TD2, TA3		1	----	2124 810	2124 810
21-129-13	RING, Reaction Shaft Support Seal	6	2	1942 389	1942 389	
	TP1, TD1, Taxi and Police, TP2, TD2, TA3		2	----	2124 813	2124 813
21-129-23	BUSHING, Reaction Shaft	6	1	2205 302	2205 302	
	TP1, TD1, Taxi and Police, TP2, TD2, TA3		1	----	2205 240	2205 240
21-129-24	GASKET, Reaction Shaft Support	6	1	1942 390	1942 390	

21-133-O TRANSMISSION CLUTCH

21-133-5	RETAINER, Front Clutch Piston, w/DISC, PISTON and SPRING	6	1	2205 326	2204 979	
	Front Clutch, w/225 cu.in. Engine	6	1	2204 979		
	Front Clutch, Heavy Duty	6	1	2204 979		
	TP1, TD1, Taxi and Police, TP2, TD2, TA3		1	----	2124 814	2124 814
	TP2, TD2, w/426 cu. in. Engine, TC2-300J		8	----	2400 724	2400 724

★ Indicates use as required.

Numerals in parentheses () refer to notes.

Printed in U.S.A.

⊖ Indicates parts not listed in any previous parts book.

Prices and specifications subject to change without notice.

Jan. 3, 1964 Supersedes Dec. 14, 1962.

* Indicates change or addition.

CODE	PART NAME AND DESCRIPTION	C Y L.	PER CAR	VALIANT DART	PLYMOUTH DODGE	CHRYSLER IMPERIAL
------	---------------------------	--------------	------------	-----------------	-------------------	----------------------

AUTOMATIC 3 - SPEED TRANSMISSION

21-133-0 TRANSMISSION CLUTCH - Cont'd

21-133-7	RETAINER, Front Clutch Piston, w/BUSHING . . .	6	1	2205 325	2204 980	
	Front Clutch, w/225 cu.in. Engine	6	1	2204 980		
	Front Clutch, Heavy Duty	6	1	2204 980		
	Front Clutch Piston, w/BUSHING, TP1, TD1, Taxi and Police, TP2, TD2, TA3		1	----	*2124 815	*2124 815
	Rear Clutch, Taxi and Police, w/3 Disc		1	----	*2204 976	
	Rear Clutch, w/318 cu. in. Engine	8	1	----	2204 976	
	Rear Clutch, TP2, TD2, w/361, 383 and 426 cu. in. Engine	8	1	----	2124 836	
	Rear Clutch, TA3	8	1	----	2124 836	2124 836
	Rear Clutch Piston, TP1, TD1, Taxi and Police, TP2, TD2, TA3, 28T., 62T.		1	----	2124 833	2124 833
	Rear Clutch, Police and Taxi, TP1, TD1, TP2, TD2, w/4 Disc		1	----	*2124 836	
21-133-10	BUSHING, Front Clutch Retainer	6	1	2205 303	2205 303	
	TP1, TD1, Taxi and Police, TP2, TD2, TA3 . . .		1	----	2205 241	2205 241
21-133-15	PISTON, Front Clutch	6	1	1942 395	1942 395	
	Rear Clutch	6	1	2125 198	2125 198	
	Front Clutch, TP1, TD1, Taxi and Police, TP2, TD2, TA3		1	----	2124 819	2124 819
	Rear Clutch, TP1, TD1, Taxi and Police, TP2, TD2, TA3		1	----	2204 645	2204 645
21-133-17	SEAL, Front Clutch Piston, Inner	6	1	1942 396	1942 396	
	Outer	6	1	1942 397	1942 397	
	Rear Clutch Piston, Inner	6	1	2125 187	2125 187	
	Outer	6	1	1942 397	1942 397	
	Front Clutch Piston, Inner, TP1, TD1, Taxi and Police, TP2, TD2, TA3		1	----	2124 820	2124 820
	Outer, TP1, TD1, Taxi and Police, TP2, TD2, TA3		1	----	2124 821	2124 821
	Rear Clutch Piston, Inner, TP1, TD1, Taxi and Police, TP2, TD2, TA3		1	----	1942 054	1942 054
	Outer, TP1, TD1, Taxi and Police, TP2, TD2, TA3		1	----	2124 835	2124 835
21-133-20	SPRING, Front Clutch Piston Return	6	1	2205 233	1942 467	
	Front Clutch, w/225 cu.in. Engine	6	1	1942 467		
	Front Clutch, Heavy Duty	6	1	1942 467		
	Rear Clutch	6	1	1942 414	1942 414	
	Front Clutch Piston, TP1, TD1, Taxi and Police, TP2, TD2, TA3		10	----	2124 822	2124 822
	Rear Clutch Piston, TP1, TD1, Taxi and Police, TP2, TD2, TA3		1	----	1942 015	1942 015
21-133-22	RETAINER, Front Clutch Piston Spring	6	1	1942 399	1942 399	
	TP1, TD1, Taxi and Police, TP2, TD2, TA3 . . .		1	----	2124 823	2124 823
21-133-25	SNAP RING, Rear Clutch Piston Spring, 5 27/64" O.D.	6	1	1942 415	1942 415	
	Rear Clutch Piston Retainer, TP1, TD1, Taxi and Police, TP2, TD2, TA3, 1 5/16" O.D. . . .		1	----	2124 872	2124 872
	Rear Clutch Piston Spring, TP1, TD1, Taxi and Police, TP2, TD2, TA3, 7 3/16" O.D.		1	----	1942 057	1942 057
21-133-36	DISC, Front Clutch Driving	6	★	2205 203	1942 404	
	Front Clutch Driving, w/225 cu.in. Engine . . .	6	4	1942 404		
	Front Clutch Driving, Heavy Duty	6	4	1942 404		
	Rear Clutch Driving	6	3	1942 418	1942 418	

★ Indicates use as required. Numerals in parentheses () refer to notes. Printed in U.S.A.
 □ Indicates parts not listed in any previous parts book. Prices and specifications subject to change without notice.
 * Indicates change or addition. Jan. 3, 1964 Supersedes Dec. 14, 1962.

CODE	PART NAME AND DESCRIPTION	C Y L	PER CAR	VALIANT DART	PLYMOUTH DODGE	CHRYSLER IMPERIAL
------	---------------------------	-------------	------------	-----------------	-------------------	----------------------

AUTOMATIC 3-SPEED TRANSMISSION

21-133-0 TRANSMISSION CLUTCH - Cont'd

21-133-36	DISC - Cont'd					
	Front Clutch Driving, TP1, TD1, Taxi and Police, TP2, TD2, TA3		4	----	2124 827	2124 827
	Front Clutch Driving, TP2, TD2, w/426 cu. in. Engine, TC2-300J	8	4	----	2400 725	2400 725
	Rear Clutch Driving, TP1, TD1, Taxi and Police, TP2, TD2, TA3		★	----	2124 838	2124 838
21-133-38	PLATE, Front Clutch	6	★	1942 403	1942 403	
	Rear Clutch	6	2	1942 403	1942 403	
	Front Clutch, TP1, TD1, Taxi and Police, TP2, TD2, TA3		4	----	2124 826	2124 826
	Rear Clutch, TP1, TD1, Taxi and Police, TP2, TD2, TA3		★	----	2124 826	2124 826
21-133-39	PLATE, Front Clutch Pressure	6	1	1942 402	1942 402	
	Rear Clutch Pressure, Front	6	1	1949 930	1949 930	
	Rear Clutch Pressure, Rear	6	1	1942 402	1942 402	
	Front Clutch Pressure, TP1, TD1, Taxi and Police, TP2, TD2, TA3		1	----	2124 825	2124 825
	Rear Clutch Pressure, Front, TP1, TD1, Taxi and Police, TP2, TD2, TA3		1	----	2124 837	2124 837
	Rear Clutch Pressure, Rear, TP1, TD1, Taxi and Police, TP2, TD2, TA3		1	----	2124 825	2124 825
21-133-40	GEAR, Sun, w/BUSHING	6	1	1942 434	1942 434	
	TP1, TD1, Taxi and Police, TP2, TD2, TA3 . . .		1	----	1942 076	1942 076
21-133-42	SHELL, Sun Gear Driving	6	1	1942 438	1942 438	
	TP1, TD1, Taxi and Police, TP2, TD2, TA3 . . .		1	----	2124 847	2124 847
21-133-43	SNAP RING, Front Clutch, Outer, 5 1/4" O.D. . .	6	1	*1942 421	*1942 421	
	Front Clutch, Inner	6	1	1942 400	1942 400	
	Rear Clutch Retainer, .060" thk., 5 1/4" O.D. . .	6	★	*1942 421	*1942 421	
	Rear Clutch Retainer, .068" thk., 5 1/4" O.D. . .	6	★	*1942 422	*1942 422	
	Rear Clutch Retainer, .076" thk., 5 1/4" O.D. . .	6	★	*1942 423	*1942 423	
	Front Clutch, Inner, TP1, TD1, Taxi and Police, TP2, TD2, TA3, 3 1/4" O.D.		1	----	2124 824	2124 824
	Front Clutch, TP1, TD1, Taxi and Police, TP2, TD2, TA3, 7" O.D.		1	----	1942 063	1942 063
	Rear Clutch Retainer, TP1, TD1, Taxi and Police, TP2, TD2, TA3, .060" thk., 7" O.D. . .		★	----	1942 063	1942 063
	Rear Clutch Retainer, TP1, TD1, Taxi and Police, TP2, TD2, TA3, .074" thk., 7" O.D. . .		★	----	1942 064	1942 064
	Rear Clutch Retainer, TP1, TD1, Taxi and Police, TP2, TD2, TA3, .088" thk., 7" O.D. . .		★	----	1942 065	1942 065
21-133-46	RING, Sun Gear Driving Shell Lock	6	2	1942 439	1942 439	
	TP1, TD1, Taxi and Police, TP2, TD2, TA3 . . .		2	----	1736 521	1736 521
21-133-47	PLATE, Sun Gear Driving Shell Thrust	6	2	2124 258	2124 258	
	TP1, TD1, Taxi and Police, TP2, TD2, TA3 . . .		1	----	1942 080	1942 080
21-133-48	WASHER, Sun Gear Driving Shell Thrust	6	2	*2204 727	*2204 727	
	w/3 Tabs, TP1, TD1, Taxi and Police, TP2, TD2, TA3		1	----	1942 081	1942 081

★ Indicates use as required.

Numerals in parentheses () refer to notes.

Printed in U.S.A.

⊠ Indicates parts not listed in any previous parts book.

Prices and specifications subject to change without notice.

Jan. 3, 1964 Supersedes Dec. 14, 1962.

Page 21-28

* Indicates change or addition.

CODE	PART NAME AND DESCRIPTION	CYL	PER CAR	VALIANT DART	PLYMOUTH DODGE	CHRYSLER IMPERIAL
------	---------------------------	-----	---------	--------------	----------------	-------------------

AUTOMATIC 3-SPEED TRANSMISSION

21-133-O TRANSMISSION CLUTCH - Cont'd

21-133-65	WASHER, Front Clutch Thrust, Front and Rear, Plastic	6	2	2204 369	2204 369	
	Front Clutch Thrust, Front, TP1, TD1, Taxi and Police, TP2, TD2, TA3, Brown, .043" thk. . .		*	----	*2204 621	*2204 621
	Front Clutch Thrust, Front, TP1, TD1, Taxi and Police, TP2, TD2, TA3, Green, .061" thk. . .		*	----	2204 622	2204 622
	Front Clutch Thrust, Front, TP1, TD1, Taxi and Police, TP2, TD2, TA3, Red, .084" thk. . . .		*	----	2204 623	2204 623
	Front Clutch Thrust, Front, TP1, TD1, Taxi and Police, TP2, TD2, TA3, Yellow, .102" thk. . .		*	----	2400 284	2400 284
	Front Clutch Thrust, Rear, TP1, TD1, Taxi and Police, TP2, TD2, TA3, Green, .061" thk. . . .		1	----	2204 622	2204 622

21-134-O TRANSMISSION FRONT AND REAR PLANET PINION CARRIER AND COMPONENTS

21-134-5	CARRIER, w/PINIONS and WASHERS, Front	6	1	E2421 271	E2421 271	
	Rear	6	1	E2421 272	E2421 272	
	Front		1	----	*2400 912	*2400 912
	Rear, TP1, TD1, Taxi and Police, TP2, TD2, TA3		1	----	*2400 913	*2400 913
21-134-30	WASHER, Front and Rear Planet Pinion Carrier Thrust, w/3 Tabs, TP1, TD1, Taxi and Police, TP2, TD2, TA3		2	----	1942 081	1942 081
21-134-36	SUPPORT, Front Annulus Gear	6	1	1942 446	1942 446	
	Rear Annulus Gear	6	1	1942 450	1942 450	
21-134-38	GEAR, Front and Rear Annulus	6	2	1942 443	1942 443	
	Front Annulus, TP1, TD1, Taxi and Police, TP2, TD2, TA3		1	----	2124 841	2124 841
	Rear Annulus, TP1, TD1, Taxi and Police, TP2, TD2, TA3		1	----	1942 086	1942 086
21-134-40	SNAP RING, Front and Rear Annulus Gear	6	2	1942 444	1942 444	
	Front Annulus Gear Support	6	1	1942 448	1942 448	
21-134-45	WASHER, Front Annulus Gear Support Thrust . .	6	1	1942 447	1942 447	

21-136-O TRANSMISSION BANDS

21-136-5	BAND, Kickdown	6	1	2204 792	2204 792	
	TP1, TD1, Taxi and Police, TP2, TD2, TA3, TC1, TC2 except 300J, TC3, TY1		1	----	2124 342	2124 342
	TP2, TD2, w/426 cu. in. Engine, TC2-300J . . .		8	----	2400 726	2400 726
21-136-15	STRUT, Kickdown Band	6	1	1630 896	1630 896	
	STRUT, Kickdown Band, TP1, TD1, Taxi and Police, TP2, TD2, TA3		1	----	2124 848	2124 848
	ANCHOR, Kickdown Band, TP1, TD1, Taxi and Police, TP2, TD2, TA3		1	----	1942 120	1942 120
21-136-17	SCREW, Kickdown Band Adjusting	6	1	1942 477	1942 477	
	TP1, TD1, Taxi and Police, TP2, TD2, TA3 . . .		1	----	2400 389	2400 389

★ Indicates use as required. Numerals in parentheses () refer to notes. Printed in U.S.A.
 E Indicates parts not listed in any previous parts book. Prices and specifications subject to change without notice.
 * Indicates change or addition. Jan. 3, 1964 Supersedes Dec. 14, 1962.

1963 PASSENGER CAR PARTS CATALOG

TRANSMISSION

CODE	PART NAME AND DESCRIPTION	C Y L.	PER CAR	VALIANT DART	PLYMOUTH DODGE	CHRYSLER IMPERIAL
------	---------------------------	--------------	------------	-----------------	-------------------	----------------------

AUTOMATIC 3-SPEED TRANSMISSION

21-136-O TRANSMISSION BANDS - Cont'd						
21-136-20	LEVER, Kickdown Band	6	1	2204 952	2125 067	
	w/225 cu. in. Engine	6	1	2125 067		
	Heavy Duty	6	1	2125 067		
	TP2, TD2, w/318 cu. in. Engine.	8	1	----	2204 952	
	TP2, TD2, w/361 and 383 cu. in. Engine, TA3, TC1, TC2 except 300J, TC3, TY1	8	1	----	2125 067	2125 067
	TP1, TD1, Taxi and Police	6	1	----	2204 952	
	TP2, TD2, w/426 cu. in. Engine, TC2-300J	8	1	----	2124 579	2124 579
21-136-23	SHAFT, Kickdown Band Lever		1	1942 132	1942 132	1942 132
21-136-30	BAND, Reverse	6	1	1942 487	1942 487	
	TP1, TD1, Taxi and Police, TP2, TD2, TA3		1	----	1942 133	1942 133
21-136-41	ANCHOR, Reverse Band	6	1	1942 496	1942 496	
	STRUT, Reverse Band	6	1	1942 497	1942 497	
	STRUT, Reverse Band, TP1, TD1, Taxi and Police, TP2, TD2, TA3		1	----	2204 823	2204 823
21-136-44	LINK, Reverse Band	6	1	1942 494	1942 494	
	w/ANCHOR, TP1, TD1, Taxi and Police, TP2, TD2, TA3		1	----	2204 820	2204 820
21-136-47	LEVER, Reverse Band, w/STEM	6	1	1942 491	1942 491	
	Reverse Band, Short	6	1	1942 140	1942 140	
	w/STEM, TP1, TD1, Taxi and Police, TP2, TD2, TA3		1	----	1942 137	1942 137
	Short, TP1, TD1, Taxi and Police, TP2, TD2, TA3		1	----	2124 493	2124 493
21-136-49	SHAFT, Reverse Band Lever	6	1	1942 493	1942 493	
	TP1, TD1, Taxi and Police, TP2, TD2, TA3		1	----	2124 857	*2124 857
21-136-52	SCREW, Reverse Band Adjusting	6	1	1942 543	1942 543	
	TP1, TD1, Taxi and Police, TP2, TD2, TA3		1	----	1942 141	1942 141
21-136-55	SEAL, Reverse Band Lever Shaft, TP1, TD1, Taxi and Police, TP2, TD2, TA3		1	----	1550 711	1550 711
21-136-65	DRUM, Reverse	6	1	1942 451	1942 451	
	TP1, TD1, Taxi and Police, TP2, TD2, TA3		1	----	2124 843	2124 843
21-136-228	CAM and RETAINER PACKAGE, "O" Running Clutch	6	1	2279 960	2279 960	
21-136-229	WASHER, Cam Screw	6	5	1823 543	1823 543	
21-136-231	CAM, "O" Running Clutch, TP1, TD1, Taxi and Police, TP2, TD2, TA3		1	----	1942 095	1942 095
21-136-232	RACE, "O" Running Clutch	6	1	2400 365	2400 365	
	TP1, TD1, Taxi and Police, TP2, TD2, TA3		1	----	2124 844	2124 844
21-136-233	RETAINER, "O" Running Clutch Spring, TP1, TD1, Taxi and Police, TP2, TD2, TA3		1	----	1942 096	1942 096
21-136-235	ROLLER, "O" Running Clutch Cam	6	10	670 776	670 776	
	TP1, TD1, Taxi and Police, TP2, TD2, TA3		12	----	670 776	670 776

★ Indicates use as required. Numerals in parentheses () refer to notes. Printed in U.S.A.
 ☐ Indicates parts not listed in any previous parts book. Prices and specifications subject to change without notice.
 Jan. 3, 1964 Supersedes Dec. 14, 1962. Page 21-30 * Indicates change or addition.

CODE	PART NAME AND DESCRIPTION	C Y L	PER CAR	VALIANT DART	PLYMOUTH DODGE	CHRYSLER IMPERIAL
------	---------------------------	-------------	------------	-----------------	-------------------	----------------------

AUTOMATIC 3-SPEED TRANSMISSION

21-136-O TRANSMISSION BANDS - Cont'd						
21-136-236	SPRING, "O" Running Clutch Cam Roller TP1, TD1, Taxi and Police, TP2, TD2, TA3	6	10 12	1942 187 ----	1942 187 *1942 187	*1942 187
21-136-237	WASHER, "O" Running Clutch Race Thrust	6	1	2400 528	2400 528	
21-137-O TRANSMISSION SERVOS						
21-137-5	PISTON, Kickdown Servo TP1, TD1, Taxi and Police, TP2, TD2, TA3	6	1 1	1942 478 ----	1942 478 *2124 850	*2124 850
21-137-8	RING, Kickdown Servo Piston Seal, Small Large Kickdown Servo Guide Seal Kickdown Servo Piston Seal, Small, TP1, TD1, Taxi and Police, TP2, TD2, TA3 Large, TP1, TD1, Taxi and Police, TP2, TD2, TA3 Kickdown Servo Guide Seal, TP1, TD1, Taxi and Police, TP2, TD2, TA3	6 6 6	1 1 1	1672 287 1636 470 1636 470	1672 287 1636 470 1636 470	
			1	----	*2124 851	*2124 851
			1	----	*1942 123	*1942 123
			1	----	*1942 123	*1942 123
21-137-11	ROD, Kickdown Servo Piston TP1, TD1, Taxi and Police, TP2, TD2, TA3	6	1 1	1942 482 ----	1942 482 *2124 853	*2124 853
21-137-13	GUIDE, Kickdown Servo TP1, TD1, Taxi and Police, TP2, TD2, TA3	6	1 1	1942 485 ----	1942 485 *2124 856	*2124 856
21-137-19	SNAP RING, Kickdown Servo Piston Rod Guide . . TP1, TD1, Taxi and Police, TP2, TD2, TA3	6	1 1	1942 486 ----	1942 486 *1942 130	*1942 130
21-137-22	SPRING, Kickdown Servo Piston Inner, TP1, TD1, Taxi and Police, TP2, TD2, TA3 Outer, TP1, TD1, Taxi and Police, TP2, TD2, TA3 Inner, TP2, TD2, w/426 cu.in. Engine, TC2-300J .	6 1 1 8	1 1 1 1	1942 481 ---- ---- ----	1942 481 *2124 852 *2125 069 *2400 729	*2124 852 *2125 069 *2400 729
21-137-35	PISTON, Reverse Servo TP1, TD1, Taxi and Police, TP2, TD2, TA3	6	1 1	1942 498 ----	1942 498 *1942 147	*1942 147
21-137-41	SPRING, Reverse Servo Piston Cushion		1	1823 941	1823 941	1823 941
21-137-44	SNAP RING, Reverse Servo Piston Plug		1	1823 940	1823 940	1823 940
21-137-47	PLUG, Reverse Servo Piston		1	1942 152	1942 152	1942 152
21-137-50	RING, Reverse Servo Piston Seal, Rubber TP1, TD1, Taxi and Police, TP2, TD2, TA3	6	1 1	1942 499 ----	1942 499 *1942 148	*1942 148
21-137-53	SPRING, Reverse Servo Piston TP1, TD1, Taxi and Police, TP2, TD2, TA3	6	1 1	1942 458 ----	1942 458 *1942 149	*1942 149
21-137-56	RETAINER, Reverse Servo Piston Spring TP1, TD1, Taxi and Police, TP2, TD2, TA3	6	1 1	1942 501 ----	1942 501 *1942 150	*1942 150
21-137-59	SNAP RING, Reverse Servo Piston Spring Retainer TP1, TD1, Taxi and Police, TP2, TD2, TA3	6	1 1	1942 502 ----	1942 502 *1942 130	*1942 130
21-137-200	PISTON, Accumulator		1	1942 153	1942 153	1942 153
21-137-202	RING, Accumulator Piston Seal, Small Large		1 1	1941 831 2124 255	1941 831 2124 255	1941 831 2124 255

★ Indicates use as required.

Numerals in parentheses () refer to notes.

Printed in U.S.A.

☐ Indicates parts not listed in any previous parts book.

Prices and specifications subject to change without notice.

* Indicates change or addition.

December 14, 1962.

CODE	PART NAME AND DESCRIPTION	CYL.	PER CAR	VALIANT DART	PLYMOUTH DODGE	CHRYSLER IMPERIAL
------	---------------------------	------	---------	--------------	----------------	-------------------

AUTOMATIC 3-SPEED TRANSMISSION

21-137-O TRANSMISSION SERVOS - Cont'd

21-137-205	SPRING, Accumulator Piston	6	1	1942 156	1942 156	
	w/225 cu. in. Engine	8	1	2125 109		2125 109
	Taxi and Police	6	1	----	2464 076	

21-138-O TRANSMISSION GOVERNOR

21-138-2	REPAIR PACKAGE, Governor	6	1	2196 998	2196 998	
	TP1, TD1, Taxi and Police, TP2, TD2, TA3 . .		1	----	2275 498	2275 498
	TP2, TD2, w/383 cu. in. Engine, w/4 Barrel Carburetor	8	1	----	*2298 514	
	TA3, TC1, TC2 except 300J, w/413 cu. in. Engine	8	1	----	*2298 514	*2298 514
	TP2, TD2, w/426 cu. in. Engine, TC2-300J . . .	8	1	----	2421 377	2421 377
21-138-7	SNAP RING, Governor Body	6	1	6022 583	6022 583	
	TP1, TD1, Taxi and Police, TP2, TD2, TA3		1	----	6022 817	6022 817
21-138-10	SUPPORT, Governor	6	1	1942 466	1942 466	
	TP1, TD1, Taxi and Police, TP2, TD2, TA3 . . .		1	----	1942 108	1942 108
21-138-13	WEIGHT, Governor, Outer		1	1636 461	1636 461	1636 461
	Inner, TC1, TC2 except 300J, TC3, TY1		1	*1636 462	*1636 462	*1636 462
	TP2, TD2, w/426 cu. in. Engine, TC2-300J, Inner	8	1	----	*2400 705	*2400 705
21-138-15	SPRING, Governor Weight		1	2124 662	1949 858	1949 858
	w/225 cu. in. Engine	6	1	1949 858		
	Heavy Duty	6	1	1949 858		
	TP2, TD2, w/383 and 426 cu. in. Engine, TA3 w/413 cu. in. Engine, TC1 w/413 cu. in. Engine, TC2 w/413 cu. in. Engine	8	1	----	*1949 859	*1949 859
21-138-19	SNAP RING, Governor Weight, Outer		1	1636 465	1636 465	1636 465
	Inner		1	1636 464	1636 464	1636 464
21-138-21	LOCK, Body Bolt		2	2125 024	2125 024	2125 024
21-138-23	VALVE, Governor		1	2124 663	2124 663	2124 663
21-138-26	SHAFT, Governor Valve		1	1556 082	1556 082	1556 082
21-138-29	SNAP RING, Governor Valve Shaft		2	1638 461	1638 461	1638 461
21-138-38	RING, Governor Support Seal		2	1942 109	1942 109	1942 109

21-139-O TRANSMISSION VALVE BODY AND VALVES

21-139-4	BODY, w/Transfer PLATE, Complete	6	1	*2400 430	*2400 430	
	TP1, TD1, Taxi and Police, TP2, TD2, TA3 . . .		1	----	2400 431	2400 431
21-139-9	VALVE, Manual		1	1942 211	1942 211	1942 211
21-139-12	LEVER, Manual Valve		1	1942 223	1942 223	1942 223
21-139-24	SPRING, Manual Valve Lever Detent		1	1942 225	1942 225	1942 225
21-139-30	VALVE, Throttle		1	1636 423	1636 423	1636 423
21-139-33	SPRING, Throttle Valve		1	1949 847	1949 847	1949 847
21-139-47	SEAL, Throttle Lever Shaft		1	2205 300	2205 300	2205 300

★ Indicates use as required.

Numerals in parentheses () refer to notes.

Printed in U.S.A.

⊔ Indicates parts not listed in any previous parts book.

Prices and specifications subject to change without notice.

Jan. 3, 1964 Supersedes Dec. 14, 1962.

* Indicates change or addition.

CODE	PART NAME AND DESCRIPTION	C Y L.	PER CAR	VALIANT DART	PLYMOUTH DODGE	CHRYSLER IMPERIAL
------	---------------------------	--------------	------------	-----------------	-------------------	----------------------

AUTOMATIC 3-SPEED TRANSMISSION

21-139-O TRANSMISSION VALVE BODY AND VALVES - Cont'd

21-139-49	SNAP RING, Throttle Valve Lever Shaft	1	1539 430	1539 430	1539 430
21-139-50	LEVER, Throttle Valve	1	*2464 390	*2464 390	*2464 390
21-139-63	PLUG, Regulator Valve Throttle Pressure	1	1942 245	1942 245	1942 245
	Regulator Valve Line Pressure	1	1942 218	1942 218	1942 218
21-139-64	SLEEVE, Regulator Valve Line Pressure Plug	1	1942 213	1942 213	1942 213
21-139-67	VALVE, Regulator	1	2124 733	2124 733	2124 733
21-139-68	SPRING, Regulator Valve	1	2124 734	2124 734	2124 734
21-139-71	RETAINER, Regulator Valve Spring	1	2204 975	2204 975	2204 975
21-139-74	SCREW, Line Pressure Adjusting	1	2124 736	2124 736	2124 736
	Throttle Pressure Adjusting	1	6023 343	6023 343	6023 343
21-139-76	NUT, Line Pressure Adjusting Screw	1	2124 737	2124 737	2124 737
	Throttle Pressure Adjusting Screw Lock	1	1949 523	1949 523	1949 523
21-139-78	VALVE, Kickdown	1	1941 623	1941 623	1941 623
	PLUG, Kickdown Detent	1	1941 624	1941 624	1941 624
21-139-95	VALVE, Shuttle	1	1854 275	1854 275	1854 275
	PLUG, Shuttle Valve	1	1854 274	1854 274	1854 274
21-139-98	SNAP RING, Shuttle Valve	1	1539 430	1539 430	1539 430
21-139-101	SPRING, Shuttle Valve	1	2124 697	2124 697	2124 697
21-139-105	VALVE, 1-2 Shift	1	1941 602	1941 602	1941 602
	PLUG, 1-2 Shift Valve	1	1941 603	1941 603	1941 603
	VALVE, 2-3 Shift	1	1941 600	1941 600	1941 600
	PLUG, 2-3 Shift	1	1941 601	1941 601	1941 601
21-139-108	SPRING, 1-2 Shift Valve	1	2204 547	2204 547	2204 547
	2-3 Shift Valve	1	1942 231	1942 231	1942 231
21-139-117	VALVE, Torque Converter Control	1	2124 256	2124 256	2124 256
21-139-118	SPRING, Torque Converter Control Valve	1	2124 257	2124 257	2124 257
21-139-135	COVER, Regulator Valve	1	2205 034	2205 034	2205 034
	Shift Valve	1	1942 228	1942 228	1942 228
	Shift Valve Plug	1	1942 230	1942 230	1942 230
	Shuttle Valve	1	1942 227	1942 227	1942 227
	Reverse Blocker Valve	1	2205 034	2205 034	2205 034
21-139-140	PLATE, Valve Body	6	2205 053	2205 053	
	TP1, TD1, Taxi and Police, TP2, TD2, TA3	1	----	2204 576	2204 576
21-139-143	VALVE, Front and Rear Pump Check	2	*2204 599	*2204 599	*2204 599
21-139-144	SPRING, Front and Rear Pump Check Valve	2	1942 233	1942 233	1942 233
21-139-147	PLATE, Transfer	6	2400 339	2400 339	
	TP1, TD1, Taxi and Police, TP2, TD2, TA3	1	----	2400 340	2400 340

★ Indicates use as required.

Numerals in parentheses () refer to notes.

Printed in U.S.A.

⊠ Indicates parts not listed in any previous parts book.

Prices and specifications subject to change without notice.

* Indicates change or addition.

Jan. 3, 1964 Supersedes Dec. 14, 1962.

