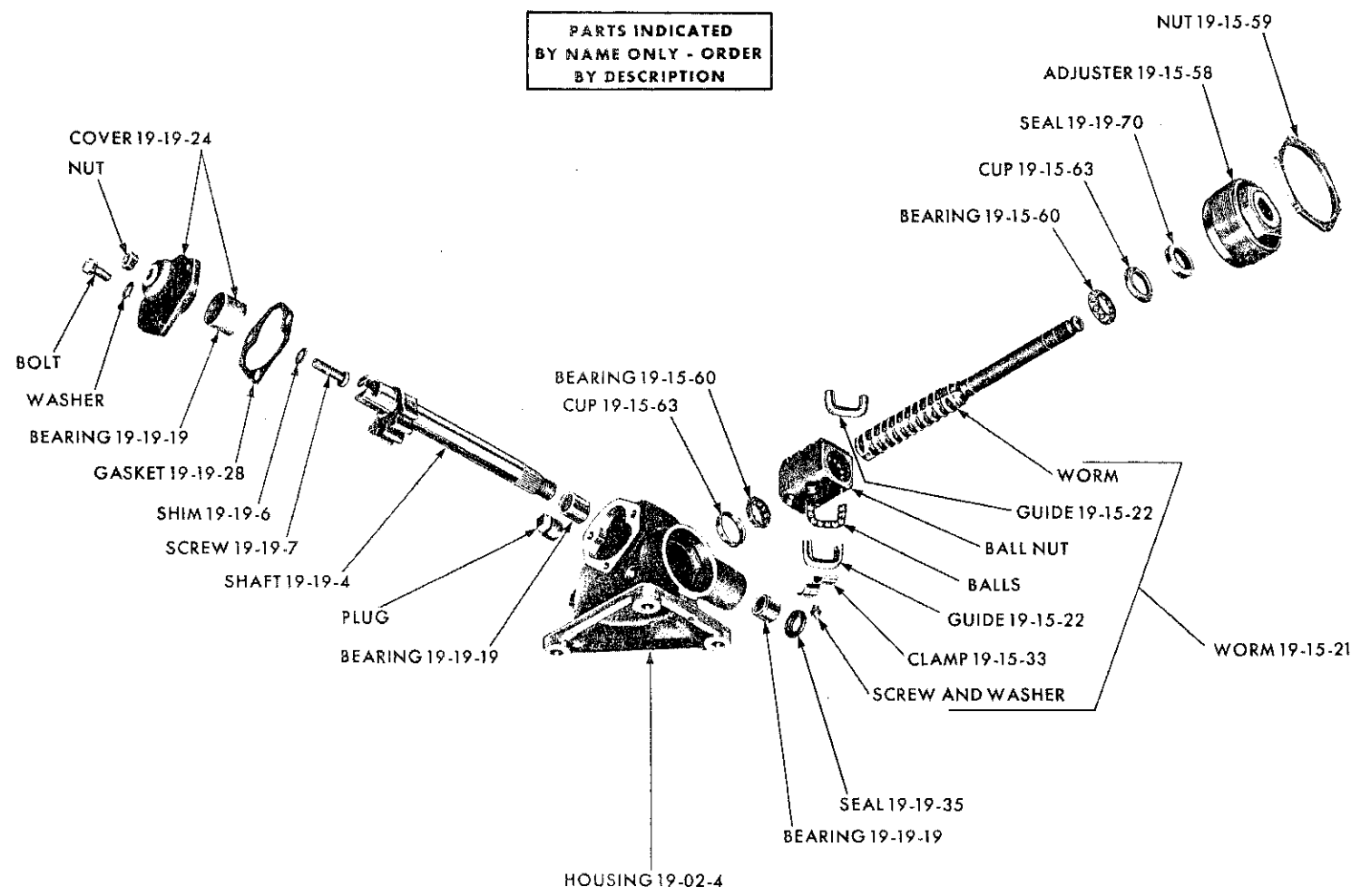


GROUP 19 - STEERING

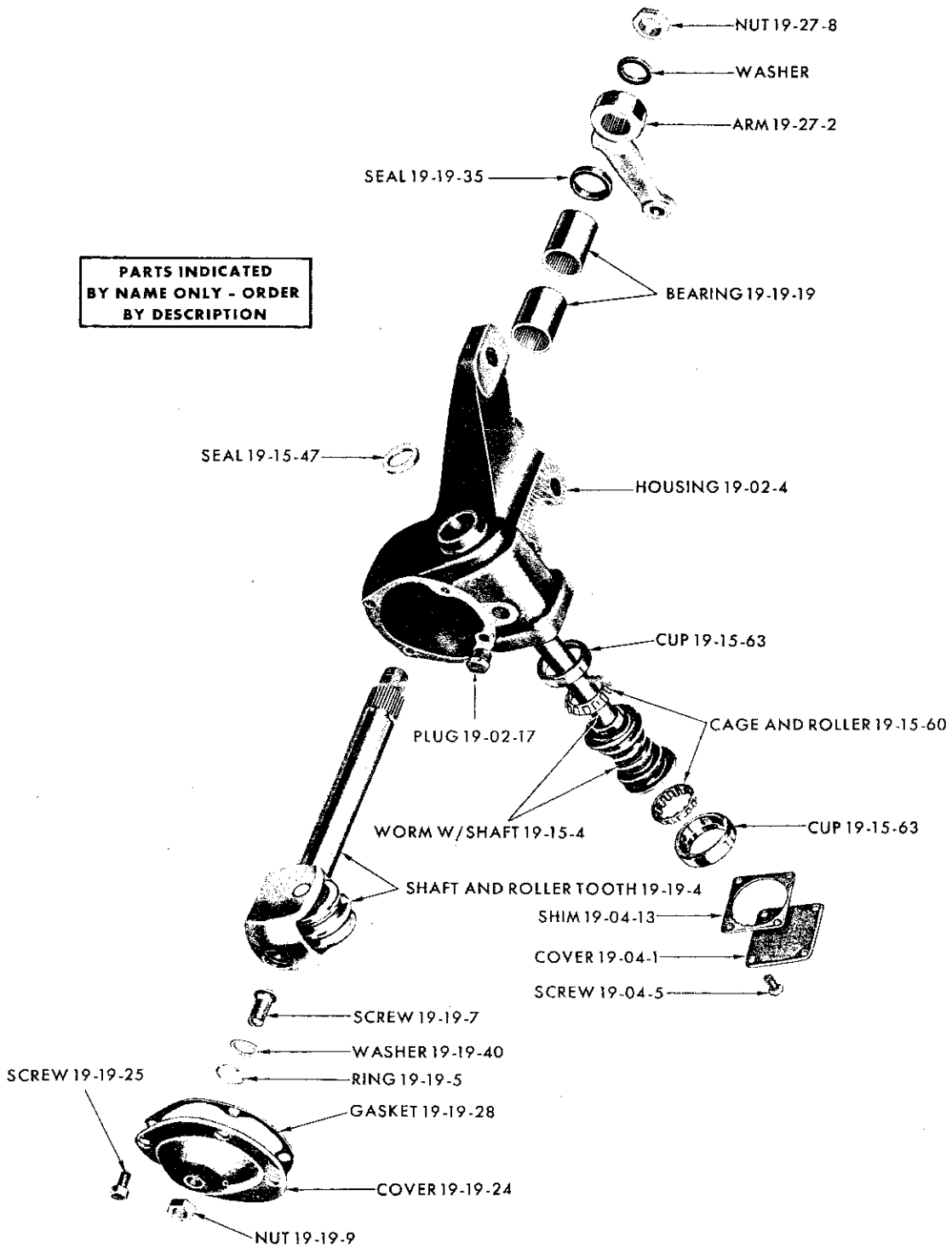
PARTS INDICATED  
BY NAME ONLY - ORDER  
BY DESCRIPTION



19x8728

MANUAL STEERING GEAR - VALIANT RV1

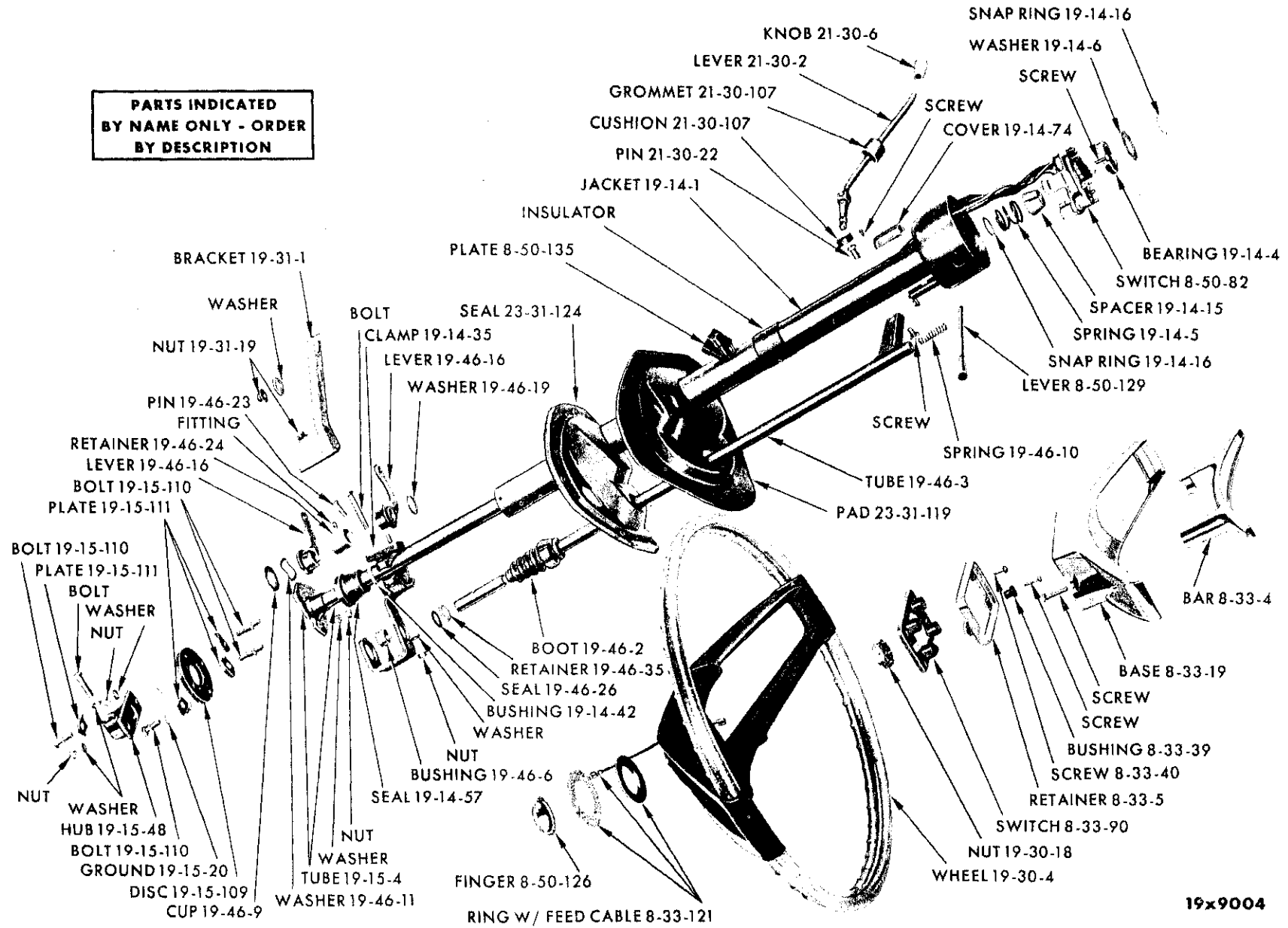
PARTS INDICATED  
BY NAME ONLY - ORDER  
BY DESCRIPTION



19x8970

MANUAL STEERING GEAR - EXCEPT VALIANT RV1

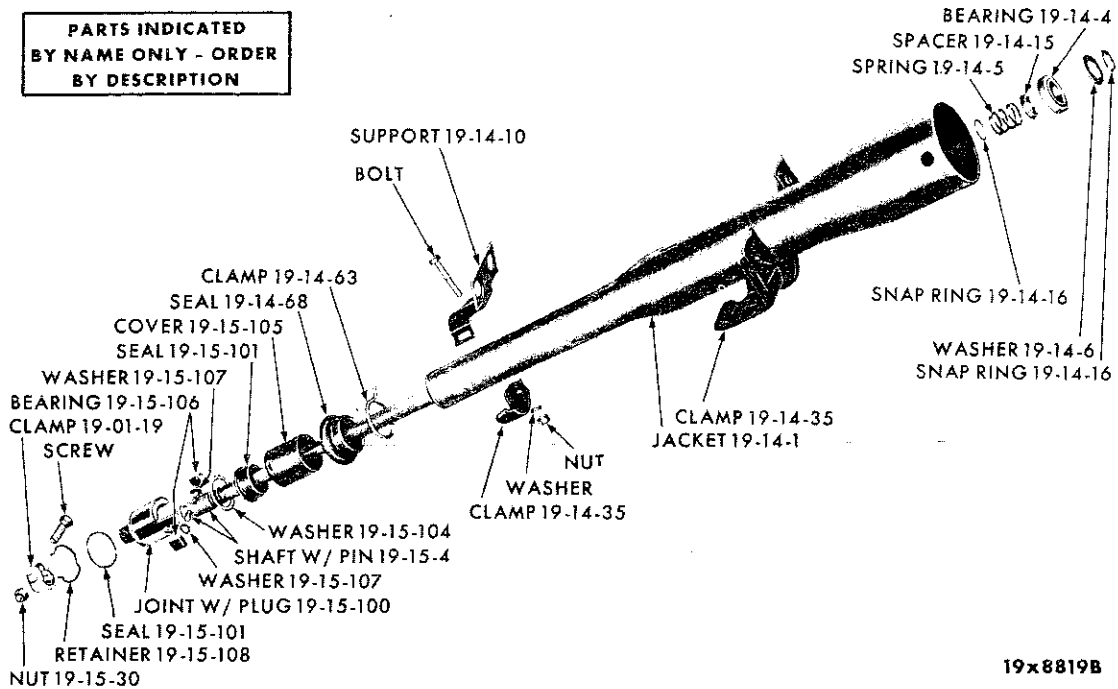
**PARTS INDICATED  
BY NAME ONLY - ORDER  
BY DESCRIPTION**



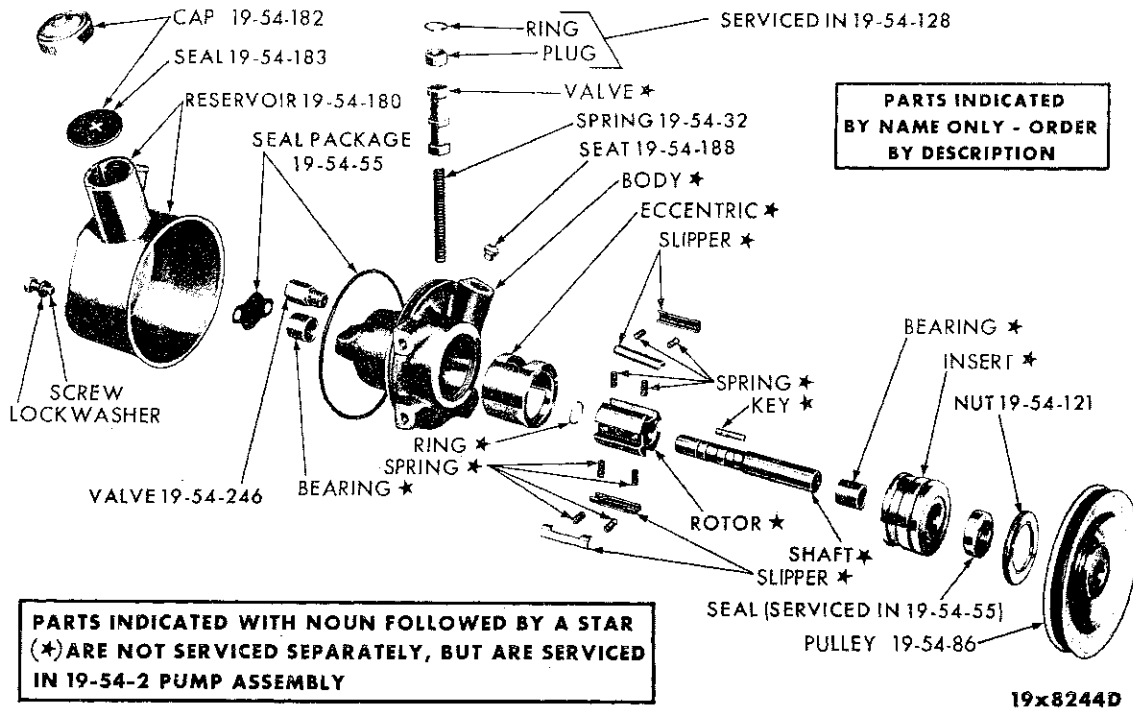
STEERING CONTROLS - PLYMOUTH RP1-2

19x9004

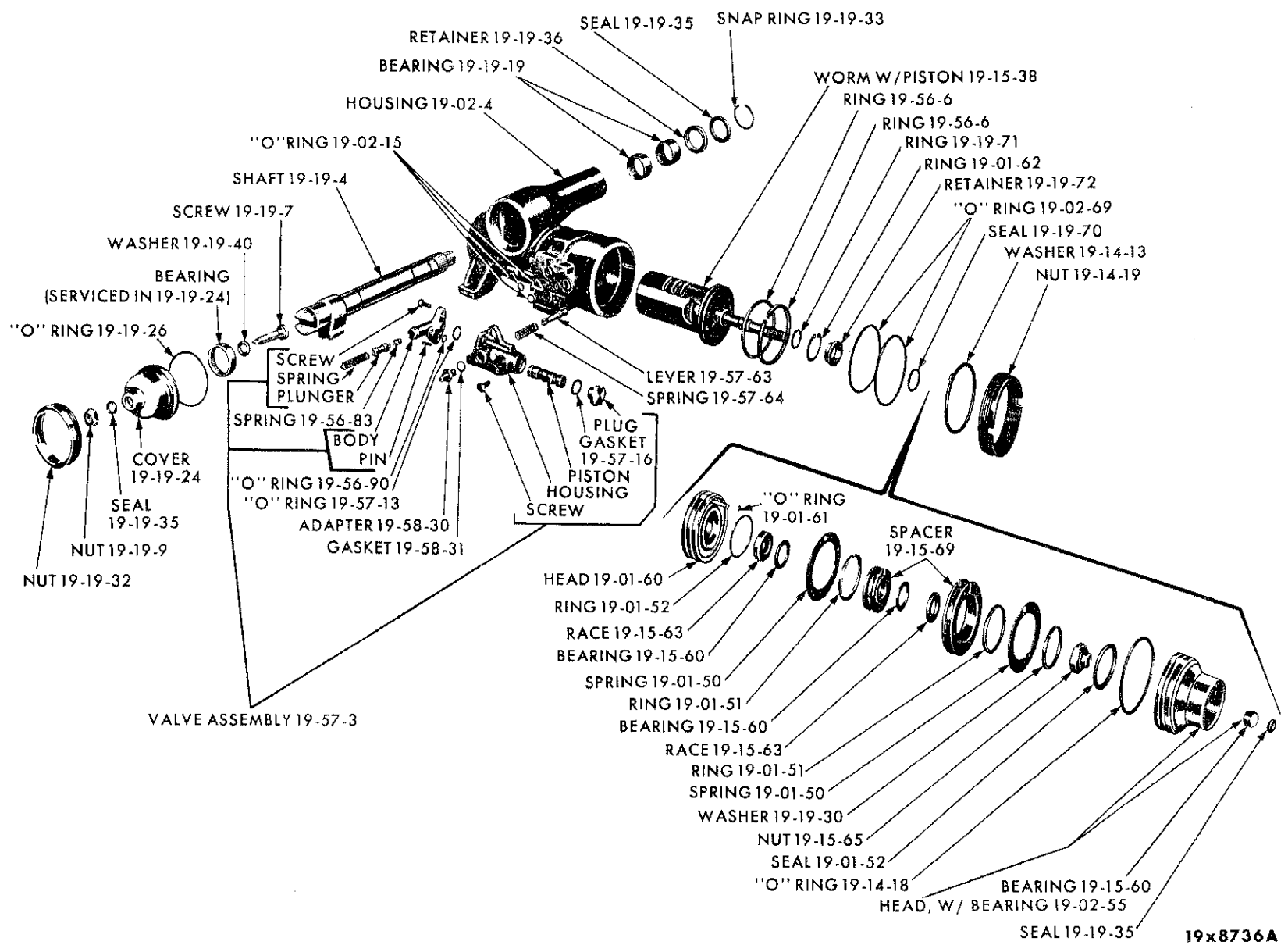
**PARTS INDICATED  
BY NAME ONLY - ORDER  
BY DESCRIPTION**



STEERING CONTROLS - VALIANT RV1

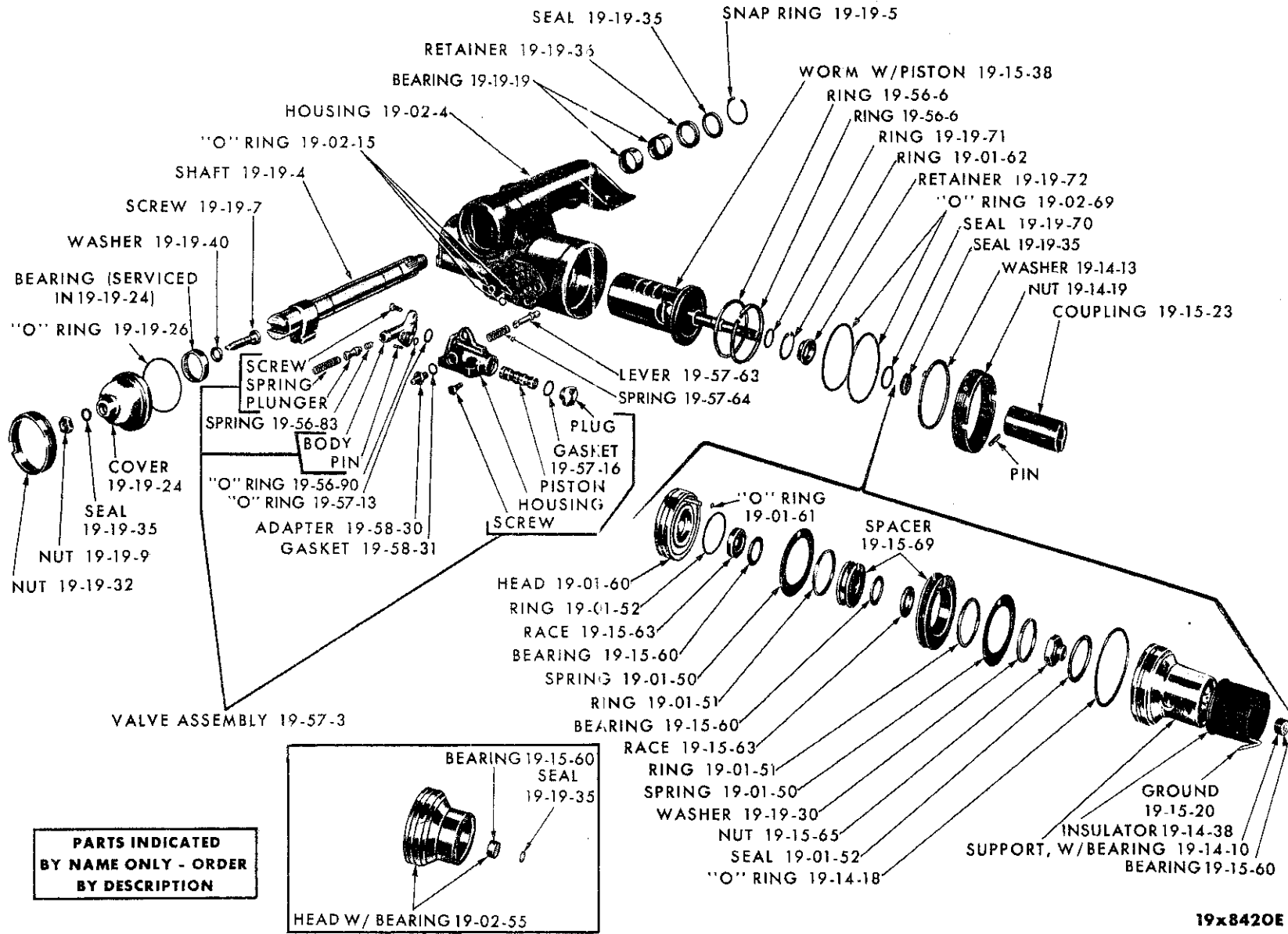


POWER STEERING PUMP



19x8736A

POWER STEERING - VALIANT RV1



POWER STEERING - EXCEPT VALIANT RV1

CODE	PART NAME AND DESCRIPTION	CYL	PER CAR	VALIANT	PLYMOUTH	DESOTO	CHRYSLER	IMPERIAL
------	---------------------------	-----	---------	---------	----------	--------	----------	----------

STANDARD STEERING

19-01-0 STEERING GEAR ASSEMBLY

NOTE: A change was made on the Valiant Steering Gear whereby the column shaft was lengthened and the worm shaft in the chuck was shortened. The parts affected are the ones noted in parenthesis ( ) after the part numbers.

19-01-3	OVERHAUL PACKAGE, RC1, RC2 . . . . .	6	1	2196 033(3)	2196 995	2196 995	2196 995	
			1	2275 449(4)				
19-01-8	CHUCK, RC1, RC2 . . . . .	6	1	2072 090(1)	2201 622	2201 622	2201 622	
			1	2127 132(2)				
19-01-12	BOLT, Housing to Frame, 4 1/2" x 7/16", RC1, RC2 . . . . .		2	----	2201 621	2201 621	2201 621	
	4 5/8" x 7/16", RC1, RC2 . . . . .		1	----	2201 620	2201 620	2201 620	
19-01-19	CLAMP, Coupling . . . . .	6	1	2074 948(3)				
		6	1	2265 613(4)				
19-01-24	SPACER, Frame, Bolt, RC1, RC2		1	----	1733 218	1733 218	1733 218	

19-02-0 STEERING GEAR HOUSING

19-02-4	HOUSING, RC1, RC2 . . . . .	6	1	2072 092(3)	2200 719	2200 719	2200 719	
			1	2127 134(4)				
19-02-17	PLUG, Filler, RC1, RC2 . . . . .		1	----	1673 974	1673 974	1673 974	
19-02-18	WASHER, Housing to Frame Bolt RC1, RC2 . . . . .	6	2	2072 020				
			1	----	562 704	562 704	562 704	

19-04-0 STEERING GEAR HOUSING COVER

19-04-1	COVER, RC1, RC2 . . . . .		1	----	2201 237	2201 237	2201 237	
19-04-5	SCREW, Cover, RC1, RC2 . . . . .		4	----	1134 479	1134 479	1134 479	
19-04-13	SHIM, .003" thk., RC1, RC2 . . . . .		★	----	1123 313	1123 313	1123 313	
	.006" thk., RC1, RC2 . . . . .		★	----	620 180	620 180	620 180	
	.011" thk., RC1, RC2 . . . . .		★	----	620 181	620 181	620 181	
	.0275" thk., RC1, RC2 . . . . .		★	----	1856 992	1856 992	1856 992	

19-14-0 STEERING GEAR COLUMN JACKET

19-14-1	JACKET . . . . .	6	1	2073 668				
	w/Std. Trans. . . . .		1	----	2123 712	2123 712		
	w/Auto. Trans., RC1, RC2 . . . . .		1	----	2123 667	2123 668	2201 232	
19-14-4	BEARING, RC1, RC2 . . . . .		1	1828 911	1828 911	1828 911	1828 911	
19-14-5	SPRING, Bearing, RC1, RC2 . . . . .		1	2074 942	1828 566	1828 566	1828 566	
19-14-6	WASHER, Bearing, RC1, RC2 . . . . .		1	2260 124	2260 099	2260 099	2260 099	
19-14-10	SUPPORT, Lower . . . . .	6	1	2072 885				
19-14-15	SPACER, Bearing, RC1, RC2 . . . . .		1	2074 943	1316 772	1316 772	1316 772	
19-14-16	SNAP RING, Bearing, RC1, RC2		2	1405 286	1944 011	1944 011	1944 011	
19-14-35	CLAMP, Jacket, Lower . . . . .	6	1	2072 884				
	Upper . . . . .	6	1	2073 665				
	w/Std. Trans. . . . .		1	----	2200 721	2200 721		
	w/Auto. Trans., RC1, RC2 . . . . .		1	----	2201 272	2201 272	2201 272	
19-14-38	INSULATOR, w/Auto. Trans. . . . .		1	----	1602 951	1602 951		
19-14-42	BUSHING, Jacket to Shaft Seal. . . . .	6	1	2207 835				
	RC1, RC2 . . . . .		2	----	2201 624	2201 624	2201 624	
19-14-57	SEAL, Jacket, RC1, RC2 . . . . .		1	----	2201 234	2201 234	2201 234	
19-14-68	SEAL, Jacket to Shaft . . . . .	6	1	*2073 675(3)				
		6	1	*2265 344(4)				
19-14-72	SCREW, w/WASHER, to Floor, RC1, RC2 . . . . .	6	----	----	6008 218	6008 218	6008 218	
19-14-74	COVER, Jacket Wiring . . . . .		1	----	2123 127	2123 127		
19-14-77	ADAPTER, w/Std. Trans. . . . .		1	----	1902 333			

NOTE 1: Length of worm shaft protruding from chuck - 4 11/16"

NOTE 2: Length of worm shaft protruding from chuck - 1 11/16"

NOTE 3: Use w/2072 090 Chuck

NOTE 4: Use w/2127 132 Chuck

\* Indicates use as required.

Numerals in parentheses ( ) refer to notes.

Printed in U.S.A.

⊠ Indicates parts not listed in any previous parts book.

Prices and specifications subject to change without notice.

\* Indicates change or addition.

CODE	PART NAME AND DESCRIPTION	CYL.	PER CAR	VALIANT	PLYMOUTH	DESOTO	CHRYSLER	IMPERIAL
------	---------------------------	------	---------	---------	----------	--------	----------	----------

STANDARD STEERING

19-15-O STEERING GEAR TUBE AND COUPLING								
19-15-4	SHAFT, w/COUPLING, Column	6	1	2074 941(1)				
	w/PIN	6	1	2265 605(2)				
	TUBE, w/HUB, RC1, RC2	6	1	2072 102(1)				
	w/Std. Trans.	6	1	2265 606(2)				
	w/Auto. Trans.				2200 747	----	2200 749	
	WORM, w/SHAFT, RC1, RC2				----	2200 747		
					----	2200 748		
					2127 017		2127 017	
19-15-12	GROMMET, Tube, RC1, RC2		1	----	2265 339	2265 339	2265 339	
19-15-20	HORN GROUND, Coupling, RC1		1	----	2201 225	2201 225	2201 225	
19-15-21	WORM, Ball Nut	6	1	2072 058(1)				
		6	1	2127 092(2)				
9-15-22	GUIDE, Ball Return	6	1	2072 069(1)				
19-15-30	NUT, Coupling Screw	6	1	2071 772				
19-15-33	CLAMP, Ball Return Guide	6	1	2072 068(1)				
		6	1	2226 129(2)				
19-15-34	SCREW, w/WASHER, Ball Guide Return Guide	6	1	6022 996(2)				
19-15-35	SPRING, Column Coupling	6	1	2204 143				
19-15-47	OIL SEAL, Worm Shaft, RC1, RC2		1	----	2200 730	2200 730	2200 730	
19-15-48	HUB, Worm Shaft, RC1, RC2		1	----	2260 484	2260 484	2260 484	
19-15-58	ADJUSTER, Worm Bearing	6	1	2072 063(1)				
		6	1	2207 307(2)				
19-15-59	NUT, Worm Bearing Adjuster Lock	6	1	2072 047				
19-15-60	BEARING, Worm Thrust Cage and Roller, RC1, RC2	6	2	2072 060				
			1	----	640 086	640 086	640 086	
19-15-63	CUP, Worm Thrust Bearing Lower, RC1, RC2	6	2	2072 062				
	Upper, RC1, RC2		1	----	637 539	637 539	637 539	
			1	----	376 751	376 751	376 751	
19-15-100	JOINT, w/PLUG, Universal	6	1	2072 104(1)				
		6	1	2265 610(2)				
19-15-101	SEAL, Joint	6	1	2072 113(1)				
	"O" RING	6	1	1939 486(2)				
19-15-104	WASHER, Coupling Bearing Retainer	6	1	2072 112(1)				
		6	1	2260 082(2)				
19-15-105	COVER, Coupling Bearing Retainer	6	1	2072 114(1)				
19-15-106	BEARING, Joint Coupling	6	2	2072 111				
19-15-107	WASHER, Joint Bearing	6	2	2072 110				
19-15-108	RETAINER, Joint Cover	6	★	2072 115(1)				
19-15-109	DISC, Flexible Joint, RC1, RC2		1	----	1856 999	1856 999	1856 999	
19-15-110	BOLT, Coupling, RC1, RC2 Drive, RC1, RC2		2	----	1857 003	1857 003	1857 003	
			2	----	1857 001	1857 001	1857 001	
19-15-111	PLATE, Flexible Joint, RC1, RC2		4	----	1857 004	1857 004	1857 004	
19-15-112	NUT, Coupling Screw	6	1	2071 772				
19-15-121	RING, Joint Seal Retainer	6	1	1939 487(2)				

NOTE 1: Use w/2072 090 Chuck.

NOTE 2: Use w/2127 132 Chuck.

★ Indicates use as required.

Numerals in parentheses ( ) refer to notes.

Printed in U.S.A.

ⓔ Indicates parts not listed in any previous parts book.

Prices and specifications subject to change without notice.

March 1, 1962 Supersedes May 31, 1961.

\* Indicates change or addition.



CODE	PART NAME AND DESCRIPTION	CYL	PER CAR	VALIANT	PLYMOUTH	DESOTO	CHRYSLER	IMPERIAL
------	---------------------------	-----	---------	---------	----------	--------	----------	----------

STANDARD STEERING

19-19-0 STEERING GEAR SHAFT AND ROLLER TOOTH ASSEMBLY

19-19-4	SHAFT . . . . .	6	1	2072 087				
	w/Roller TOOTH, RC1, RC2 . .		1	-----	2201 612	2201 612	2201 612	
19-19-5	SNAP RING, Shaft, RC1, RC2 .		1	-----	2126 978	2126 978	2126 978	
19-19-6	SHIM PACKAGE, Shaft Adjusting Screw . . . . .	6	1	2240 601				
19-19-7	SCREW, Shaft Adjusting, RC1, RC2 . . . . .		1	2072 046	682 905	682 905	682 905	
19-19-16	BUSHING, Shaft Housing . . . .	6	2	E2127 135(2)				
19-19-19	BEARING, Shaft Cover . . . . .	6	1	*2072 122(1)				
	Shaft . . . . .	6	1	*2072 038(1)				
	Lower, RC1, RC2 . . . . .		1	-----	2123 170	2123 170	2123 170	
	Upper, RC1, RC2 . . . . .		1	-----	2123 169	2123 169	2123 169	
19-19-24	COVER, Shaft, RC1, RC2 . . . .		1	*2072 095(1)	1829 128	1829 128	1829 128	
		6	1	E2072 084(2)				
19-19-25	SCREW, Shaft Cover, RC1, RC2 Housing, Cover, RC1, RC2 . . .		4	-----	1188 668	1188 668	1188 668	
			4	-----	1134 479	1134 479	1134 479	
19-19-28	GASKET, Shaft Cover, RC1, RC2		1	2072 048	1738 206	1738 206	1738 206	
19-19-35	SEAL, Shaft . . . . .	6	1	2072 056				
	OIL SEAL, RC1, RC2 . . . . .		1	-----	1730 985	1730 985	1730 985	
19-19-40	WASHER, Shaft Thrust, RC1, RC2		1	-----	1329 092	1329 092	1329 092	
19-19-70	SEAL, Worm Shaft . . . . .	6	1	*2072 055(1)				
		6	1	E2207 306(2)				

19-27-0 STEERING GEAR ARM AND IDLER ARM

19-27-2	ARM PACKAGE, Gear. . . . .	6	1	2084 613				
	ARM, Gear, RC1, RC2 . . . . .		1	-----	1824 941	1824 941	1824 941	
19-27-8	NUT, Arm, RC1, RC2 . . . . .		1	-----	1392 770	1392 770	1392 770	
19-27-31	IDLER ARM PACKAGE . . . . .	6	1	2084 614				
	ARM KIT, RC1, RC2 . . . . .		1	1857 962	1857 962	1857 962	1857 962	
	ARM, Idler, RC1, RC2 . . . . .		1	-----	1734 335	1734 335	1734 335	
19-27-33	BRACKET, Idler Arm, RC1, RC2		1	-----	1671 702	1671 702	1671 702	
19-27-34	BUSHING, Idler Arm, RC1, RC2		1	1734 327	1734 327	1734 327	1734 327	
19-27-45	BOLT, Idler Arm, RC1, RC2 . .		1	2072 490	1734 326	1734 326	1734 326	
19-27-46	NUT, Bolt . . . . .	6	1	1825 351				
19-27-50	LINK, Center, RC1, RC2 . . . .		1	2072 456	1673 008	1673 008	1673 008	
19-27-55	SEAL, Gear Arm . . . . .	6	1	1670 299				
	Idler Arm End. . . . .	6	1	2072 455				
	Center Link, RC1, RC2 . . . . .		2	-----	1670 299	1670 299	1670 299	

19-30-0 STEERING WHEEL

19-30-4	WHEEL, Black Frost . . . . .	6	1	2207 804				
	Blue . . . . .	6	1	2207 802				
	Green . . . . .	6	1	2207 803				
	Red . . . . .	6	1	*2207 805				
	Rubber, Black, Oval Rim . . . .		1	-----	2201 753			
	Rubber, Blue, Oval Rim . . . .		1	-----	2201 751			
	Rubber, Brown, Oval Rim . . . .		1	-----	2201 754			
	Rubber, Green, Oval Rim . . . .		1	-----	2201 752			
	Rubber, Red, Oval Rim . . . . .		1	-----	2201 755			
	Plastic, Clear and Black, Oval Rim . . . . .		1	-----	2201 341			
	Plastic, Clear and Blue, Oval Rim . . . . .		1	-----	2201 339			
	Plastic, Clear and Brown, Oval Rim . . . . .		1	-----	2201 342			

NOTE 1: Use w/2072 090 Chuck.

NOTE 2: Use w/2127 132 Chuck.

CODE	PART NAME AND DESCRIPTION	CYL.	PER CAR	VALIANT	PLYMOUTH	DESOTO	CHRYSLER	IMPERIAL
------	---------------------------	------	---------	---------	----------	--------	----------	----------

STANDARD STEERING

19-30-0 STEERING WHEEL - Cont'd

19-30-4	WHEEL - Cont'd							
	Plastic, Clear and Green, Oval Rim . . . . .		1	----	2201 340			
	Rubber, Blue, use w/Horn Blowing Ring, w/Auto. Trans.	8	1	----	----	2201 313		
	Rubber, Brown, use w/Horn Blowing Ring, w/Auto. Trans.	8	1	----	----	2201 315		
	Rubber, Gray, use w/Horn Blowing Ring, w/Auto. Trans.	8	1	----	----	2201 316		
	Rubber, Red, use w/Horn Blowing Ring, w/Auto. Trans.	8	1	----	----	2201 317		
	Rubber, Black, w/Std. Trans., use w/Horn Blowing Bar. . . .	8	1	----	----	2201 753		
	Rubber, Blue w/Std. Trans., use w/Horn Blowing Bar. . . .	8	1	----	----	2201 751		
	Rubber, Brown, w/Std. Trans., use w/Horn Blowing Bar. . . .	8	1	----	----	2201 754		
	Rubber, Green, w/Std. Trans., use w/Horn Blowing Bar. . . .	8	1	----	----	2201 752		
	Rubber, Red, w/Std. Trans., use w/Horn Blowing Bar. . . .	8	1	----	----	2201 755		
	Plastic, Blue Pearl and Dark Blue, w/Auto. Trans. . . . .	8	1	----	----	2201 318		
	Plastic, Tan Pearl and Brown, w/Auto. Trans. . . . .	8	1	----	----	2201 320		
	Plastic, White Pearl and Black, w/Auto. Trans. . . . .	8	1	----	----	2201 321		
	Plastic, White Pearl and Blue, w/Auto. Trans. . . . .	8	1	----	----	2201 328		
	Plastic, White Pearl and Green, w/Auto. Trans. . . . .	8	1	----	----	2201 320		
	Plastic, White Pearl and Red, w/Auto. Trans. . . . .	8	1	----	----	2201 322		
	Plastic, White Pearl and Silver, w/Auto. Trans. . . . .	8	1	----	----	2201 330		
	Rubber, Black, RC1, RC2 . . . .	8	1	----	----	----	2201 785	
	Rubber, Blue, RC1, RC2 . . . .	8	1	----	----	----	2201 782	
	Rubber, Brown, RC1, RC2 . . . .	8	1	----	----	----	2201 784	
	Rubber, Cerise, RC1, RC2 . . . .	8	1	----	----	----	2201 786	
	Rubber, Green, RC1, RC2 . . . .	8	1	----	----	----	2201 783	
	Rubber, Red, RC1, RC2 . . . .	8	1	----	----	----	2201 787	
	Plastic, Clear and Blue, RC1, RC2 . . . . .	8	1	----	----	----	2201 788	
	Plastic, Clear and Black Frost, RC1, RC2 . . . . .	8	1	----	----	----	2201 791	
	Plastic, Clear and Cerise, RC1, RC2 . . . . .	8	1	----	----	----	2201 792	
	Plastic, Green Tint and Dark Green, RC1, RC2 . . . . .	8	1	----	----	----	2201 789	
	Plastic, Tan Tint and Dark Brown, RC1, RC2 . . . . .	8	1	----	----	----	2201 790	
	Plastic, Clear and Red, RC1, RC2 . . . . .	8	1	----	----	----	2201 793	
19-30-18	NUT, Wheel, RC1, RC2 . . . .	1	1	* 145 032	2200 577	2200 577	2200 577	

19-31-0 STEERING COLUMN BRACKET

19-31-1	BRACKET, w/Auto. Trans., RC1, RC2. . . . .		1	----	----	1839 984	1902 223	
	w/Std. Trans. . . . .		1	----	----	1839 979		
	w/Manual Brake, Lower Column to Dash Panel, RC1, RC2 . . . .		1	----	2200 740	2200 740	2200 740	
	w/Power Brake, Lower Column to Dash Panel, RC1, RC2 . . . .		1	----	2200 739	2200 739	2200 739	

★ Indicates use as required. Numerals in parentheses ( ) refer to notes. Printed in U.S.A.  
 ☐ Indicates parts not listed in any previous parts book. Prices and specifications subject to change without notice.  
 May 31, 1961 Supersedes Jan. 6, 1961. Page 19-8 \* Indicates change or addition.

CODE	PART NAME AND DESCRIPTION	CYL.	PER CAR	VALIANT	PLYMOUTH	DESOTO	CHRYSLER	IMPERIAL
------	---------------------------	------	---------	---------	----------	--------	----------	----------

STANDARD STEERING

**19-31-O STEERING COLUMN BRACKET - Cont'd**

19-31-2	CLAMP, Support, RC1, RC2 . .		1	----	2200 738	2200 738	2200 738	
19-31-14	SPACER, Bracket and Reinforcement, RC1, RC2 . . .	8	2	----	----	----	2161 617	
19-31-19	STUD, Cap Attaching . . . . .	8	2	----	----	1901 587		
	Bracket Cap Attaching, RC1, RC2 . . . . .	8	2	----	----	----	6010 043	
	Speed Nut, Bracket Attaching . .	8	2	----	----	1327 986		
	NUT, w/WASHER, Upper Clamp Bracket Cap Attaching, Bracket, RC1, RC2 . . . . .	6	2	2076 232	----	----	----	
	RC1, RC2 . . . . .	8	2	----	2076 232	2076 232	2076 232	6012 032
19-31-24	CAP, w/Auto. Trans., RC1, RC2 . . . . .		1	----	1839 985	1839 985	1839 685	
	w/Std. Trans. . . . .		1	----	1839 980	1839 980		

**19-46-O GEARSHIFT ROD OR TUBE**

19-46-2	BOOT, Rod, w/Std. Trans. . . .		1	----	2161 726	2161 726		
19-46-3	TUBE, w/Std. Trans. . . . .		1	----	2201 794	2201 794		
19-46-5	SPRING, Anti-Shake, w/Std. Trans. . . . .		1	----	2201 795	2201 795		
19-46-6	BUSHING, Tube, w/Std. Trans.		1	----	2201 259	2201 259		
19-46-9	CUP, Lever Spring Washer, w/Std. Trans. . . . .		1	----	2201 258	2201 258		
19-46-10	SPRING, Tube Return, w/Std. Trans. . . . .		1	----	1632 808	1632 808		
	Lever Lock, Taxi and Heavy Duty, w/Std. Trans. . . . .		1	----	2122 977			
19-46-11	WASHER, Tube Lever Spring, w/Std. Trans. . . . .		1	----	2201 260	2201 260		
19-46-14	BUSHING, Tube Lever Lock, Taxi and Heavy Duty, w/Std. Trans. . . . .		1	----	2122 978			
19-46-16	LEVER, Tube, 2nd and High, w/Std. Trans. . . . .		1	----	*2201 772(1)	*2201 772(1)		
	2nd and High, w/Std. Trans. . .		1	----	*2122 039(2)	*2122 039(2)		
	First and Reverse, w/Std. Trans. . . . .		1	----	*2201 771(1)	*2201 771(1)		
	First and Reverse, w/Std. Trans.		1	----	*2122 038(2)	*2122 038(2)		
19-46-19	WASHER, Tube Lever, w/Std. Trans. . . . .		1	----	1670 932	1670 932		
19-46-23	PIN, Tube, w/Std. Trans. . . .		1	----	1946 578	1946 578		
	Taxi and Heavy Duty, w/Std. Trans. . . . .		1	----	1675 771			
	Lever Lock, Taxi and Heavy Duty, w/Std. Trans. . . . .		1	----	2122 979			
19-46-24	RETAINER, Tube Lever Pin, w/Std. Trans. . . . .		1	----	2123 129	2123 129		
19-46-26	SEAL, Tube Bushing Support, w/Std. Trans. . . . .		1	----	2123 012	2123 012		
19-46-35	RETAINER, Tube Support Seal, w/Std. Trans. . . . .		1	----	2123 013	2123 013		

**19-48-O GEARSHIFT CONTROL ROD**

19-48-1	ROD, First and Reverse, w/Std. Transmission . . . . .		1	----	2200 481	2260 864		
---------	----------------------------------------------------------	--	---	------	----------	----------	--	--

NOTE 1: Contains Spool w/Knurled End.

NOTE 2: Contains Spool w/o Knurled End.

★ Indicates use as required.

☐ Indicates parts not listed in any previous parts book.

\* Indicates change or addition.

Numerals in parentheses ( ) refer to notes.

Page 19-9

Printed in U.S.A.  
Prices and specifications subject to change without notice.

March 1, 1962 Supersedes May 31, 1961.





CODE	PART NAME AND DESCRIPTION	C Y L.	PER CAR	VALIANT	PLYMOUTH	DESOTO	CHRYSLER	IMPERIAL
<b>POWER STEERING</b>								
<b>19-01-0 STEERING GEAR ASSEMBLY</b>								
19-01-4	"O" RING and SEAL PACKAGE . . . . .		1	2196 032	2084 839	2084 839	2084 839	2084 840
19-01-8	CHUCK, RC1, RC2, RC3 . . . . .		1	2072 028	1733 763	1733 763	1733 763	
	RC4 . . . . .	8	1	-----	-----	-----	1946 571	2122 032
19-01-12	BOLT, Housing to Frame . . . . .		2	-----	2201 620	2201 620	2201 620	2201 620
	To Frame Wedge, RC1, RC2 . . . . .		1	-----	2200 554	2200 554	2200 554	
19-01-19	CLAMP, Coupling . . . . .	6	1	2074 948				
19-01-50	SPRING, Reaction . . . . .		2	1822 134	1822 134	1822 134	1822 134	1822 953
19-01-51	RING, Reaction . . . . .		2	1822 150	1822 150	1822 150	1822 150	1733 791
19-01-52	"O" RING, Reaction, Upper . . . . .		1	1822 151	1822 151	1822 151	1822 151	1733 593
	Lower . . . . .		1	1822 149	1822 149	1822 149	1822 149	1823 091
19-01-60	HEAD, Cylinder . . . . .		1	1823 157	1823 157	1823 157	1823 157	1823 161
19-01-61	"O" RING, Cylinder Head Ferule . . . . .		1	1486 205	1486 205	1486 205	1486 205	1486 205
19-01-62	SNAP RING, Cylinder Head . . . . .		1	1822 321	1822 321	1822 321	1822 321	1822 321
<b>19-02-0 STEERING GEAR HOUSING</b>								
19-02-4	HOUSING PACKAGE . . . . .		1	2240 615	2240 602	2240 602	2240 602	2240 602
19-02-13	BOLT, Housing to Frame . . . . .		1	-----	-----	-----	2200 556	2200 556
	Wedge, RC3, RC4 . . . . .	8	1	-----	-----	-----		
19-02-15	"O" RING, Housing . . . . .		1	1823 150	1823 150	1823 150	1823 150	1823 150
	Port. . . . .		2	1556 385	1556 385	1556 385	1556 385	1556 385
19-02-18	WASHER, Housing to Frame . . . . .	6	2	2072 020				
			1	-----	562 704	562 704	562 704	
19-02-20	SPACER, Housing to Frame . . . . .		5	-----	2122 980	2122 980	2122 980	2122 980
19-02-21	WEDGE, Housing to Frame . . . . .		1	-----	1671 587	1671 587	1671 587	1671 587
19-02-55	HEAD, Housing . . . . .	6	1	2126 946				
19-02-69	"O" Ring, Cylinder Head . . . . .		2	1733 562	1733 562	*1733 562	1733 562	1733 562
<b>19-14-0 STEERING GEAR COLUMN JACKET</b>								
19-14-1	JACKET . . . . .	6	1	2073 668				
	w/Std. Trans. . . . .		1	-----	2123 713			
	w/Auto. Trans., RC1, RC2 . . . . .		1	-----	2123 669	2123 670	1945 722	
	RC3, RC4 . . . . .	8	1	-----	-----	-----	1945 777	2123 730
19-14-4	BEARING . . . . .		1	1828 911	1828 911	1828 911	1828 911	1828 911
19-14-5	SPRING, Bearing . . . . .		1	2074 942	1828 566	1828 566	1828 566	1828 566
19-14-6	WASHER, Bearing . . . . .		1	2260 124	2260 099	2260 099	2260 099	2260 099
19-14-10	SUPPORT . . . . .		1	2072 885	1823 155	1823 155	1823 155	1823 160
19-14-13	WASHER, Support Nut . . . . .		1	1733 588	1733 588	1733 588	1733 588	1733 588
19-14-15	SPACER, Bearing . . . . .		1	2074 943	1316 772	1316 772	1316 772	1316 772
19-14-16	SNAP RING, Bearing . . . . .		2	1405 286	1944 011	1944 011	1944 011	1944 011
19-14-18	"O" RING, Support . . . . .		1	1733 602	1733 602	1733 602	1733 602	1733 602
19-14-19	NUT, Support . . . . .		1	1733 625	1733 625	1733 625	1733 625	1733 625
19-14-35	CLAMP, Lower . . . . .	6	1	2072 884				
	Upper . . . . .	6	1	2073 665				
	w/SUPPORT, w/Std. Trans. . . . .		1	-----	2123 011			
	CLAMP, Jacket . . . . .		1	-----	1820 385	1820 385	1820 385	1820 385
	Column . . . . .	8	1	-----	-----	-----	-----	2161 160
19-14-38	INSULATOR . . . . .		1	-----	1850 547	1850 547	1850 547	1850 547
19-14-42	BUSHING, Jacket to Shaft Seal . . . . .	6	2	2207 835				
19-14-68	SEAL, Jacket to Shaft, . . . . .		6	1	*2073 675			
	2 1/2" x 2 1/2" x 1 1/3" . . . . .	6	1	*2265 344				
	1 3/4" x 1 3/4" x 1 3/4" Dia. . . . .	6	1	-----				
19-14-72	SCREW, w/WASHER, to Floor . . . . .		6	-----	6008 218	6008 218	6008 218	
19-14-74	COVER, Jacket Wiring, w/Std. Trans. . . . .		1	-----	2123 127			
<b>19-15-0 STEERING GEAR TUBE AND COUPLING</b>								
19-15-4	SHAFT, w/COUPLING . . . . .	6	1	2074 941				
	w/PIN . . . . .	6	1	2072 102				
	TUBE . . . . .		1	-----	1948 687			
	w/Auto. Trans., RC1, RC2 . . . . .		8	-----	-----	1948 688	1948 691	
	RC3, RC4 . . . . .	8	1	-----	-----	-----	1948 692	2123 722

★ Indicates use as required. Numerals in parentheses ( ) refer to notes. Printed in U.S.A.  
 ☒ Indicates parts not listed in any previous parts book. Prices and specifications subject to change without notice.  
 March 1, 1962 Supersedes May 31, 1961. Page 19-10 \* Indicates change or addition.

CODE	PART NAME AND DESCRIPTION	CYL.	PER CAR	VALIANT	PLYMOUTH	DESOTO	CHRYSLER	IMPERIAL
<b>POWER STEERING</b>								
<b>19-15-0 STEERING GEAR TUBE AND COUPLING - Cont'd</b>								
19-15-10	INSULATOR, Tube . . . . .		1	----	1822 668	1822 668	1822 668	1822 668
19-15-11	INSERT, Insulator . . . . .		2	----	1822 667	1822 667	1822 667	1822 667
19-15-20	HORN GROUND, Tube . . . . .		1	----	*1943 777	*1943 777	*1943 777	*1943 777
19-15-23	COUPLING, Worm . . . . .		1	----	1850 524	1850 524	1850 524	1850 524
19-15-30	NUT, Coupling . . . . .	6	1	2071 772				
19-15-35	SPRING, Column Coupling . . . . .	6	1	2204 143				
19-15-38	WORM, w/PISTON . . . . .		1	2072 031	1822 736	1822 736	1822 736	1822 736
19-15-39	SPRING PACKAGE, Ball Guide . . . . .		1	2084 215	2084 215	2084 215	2084 215	2084 215
19-15-60	BEARING, Thrust . . . . .		2	1822 158	1822 158	1822 158	1822 158	1822 158
	Worm . . . . .		1	1733 594	1733 594	1733 594	1733 594	1733 594
19-15-63	RACE, Thrust Bearing, Inner . . . . .		1	1856 292	1856 292	1856 292	1856 292	1856 292
	Outer . . . . .		1	1822 156	1822 156	1822 156	1822 156	1822 156
19-15-65	NUT, Thrust Bearing . . . . .		1	1822 157	1822 157	1822 157	1822 157	1822 157
19-15-69	SPACER, Center Race . . . . .		1	1822 390	1822 390	1822 390	1822 390	1822 390
19-15-100	JOINT, w/PLUG, Column							
	Universal, w/o Slots . . . . .	6	1	*2072 104				
	w/2 Slots - 1.3" x 1.9" Dia. . . . .	6	1	*2260 083				
19-15-101	SEAL, Joint, use w/2072 104							
	Joint . . . . .	6	1	*2072 113				
	Use w/2260 083 Joint . . . . .	6	1	*1939 486				
	SEAL, "O" Ring . . . . .	6	1	2072 112				
19-15-104	WASHER, Coupling Bearing							
	Retainer, use w/2072 104 Joint . . . . .	6	1	*2072 108				
	Use w/2260 083 Joint . . . . .	6	1	*2260 082				
19-15-105	COVER, Coupling . . . . .	6	1	2072 114				
19-15-106	BEARING, Coupling . . . . .	6	2	2072 111				
19-15-107	WASHER, Bearing . . . . .	6	2	2072 110				
19-15-108	RETAINER, Universal Joint							
	Cover . . . . .	6	1	2072 115				
19-15-112	NUT, Coupling Screw . . . . .	6	1	2071 772				
19-15-121	RING, Joint Seal Retainer, use							
	w/2260 083 Joint . . . . .	6	1	*1939 487				
<b>19-19-0 STEERING GEAR SHAFT AND ROLLER TOOTH ASSEMBLY</b>								
19-19-1	SEAL PACKAGE, Cross Shaft							
	Cover . . . . .		1	2279 986	2279 986	2279 986	2279 986	2279 986
19-19-4	SHAFT . . . . .		1	2072 036	1733 577	1733 577	1733 577	1733 577
19-19-5	SNAP RING, Shaft Oil Seal . . . . .		1	----	2127 049	2127 049	2127 049	2127 049
19-19-7	SCREW, Adjusting . . . . .		1	1675 269	1675 269	1675 269	1675 269	1675 269
19-19-9	NUT, Adjusting Screw . . . . .		1	1822 204	1822 204	1822 204	1822 204	1822 204
19-19-19	BEARING, Shaft . . . . .		2	2072 038	1734 078	1734 078	1734 078	1734 078
19-19-24	COVER, w/BEARING, Shaft . . . . .		1	1733 604	1733 604	1733 604	1733 604	1733 604
19-19-26	"O" RING, Cover . . . . .		1	1733 615	1733 615	1733 615	1733 615	1733 615
19-19-30	WASHER, Reaction Seal Upper . . . . .		1	1733 790	1733 790	1733 790	1733 790	1733 790
19-19-32	NUT, Shaft Cover . . . . .		1	1733 627	1733 627	1733 627	1733 627	1733 627
19-19-33	SNAP RING, Shaft Seal . . . . .	6	1	2072 041				
19-19-35	OIL SEAL, Shaft . . . . .		1	2072 039	1730 985	1730 985	1730 985	1730 985
	Worm Shaft . . . . .		1	1733 603	1733 603	1733 603	1733 603	1733 603
	SEAL, Adjusting Screw . . . . .		1	1822 203	1822 203	1822 203	1822 203	1822 203
19-19-36	RETAINER, Shaft Oil Seal . . . . .		1	2072 040	1670 356	1670 356	1670 356	1670 356
19-19-40	WASHER, Adjusting Screw							
	Thrust . . . . .		1	1675 271	1675 271	1675 271	1675 271	1675 271
19-19-70	SEAL, Worm Sleeve . . . . .		1	1822 324	1822 324	1822 324	1822 324	1822 324
19-19-71	RING, Worm Sealing . . . . .		1	1822 406	1822 406	1822 406	1822 406	1822 406
19-19-72	SLEEVE, Worm . . . . .		1	1822 320	1822 320	1822 320	1822 320	1822 320
<b>19-27-0 STEERING GEAR ARM AND IDLER ARM</b>								
19-27-2	ARM PACKAGE, Gear . . . . .	6	1	2084 613				
	Arm, Gear, RC1 . . . . .		1	----	1731 414	1731 414	1731 414	
	RC2, RC3, RC4 . . . . .		8	----	----	----	1731 415	1731 415
19-27-8	NUT, Arm . . . . .		1	----	1392 770	1392 770	1392 770	1392 770

\* Indicates use as required. Numerals in parentheses ( ) refer to notes. Printed in U.S.A.  
 † Indicates parts not listed in any previous parts book. Prices and specifications subject to change without notice.  
 \* Indicates change or addition. Page 19-11 March 1, 1962 Supersedes May 31, 1961.

CODE	PART NAME AND DESCRIPTION	CYL.	PER CAR	VALIANT	PLYMOUTH	DESOTO	CHRYSLER	IMPERIAL
<b>POWER STEERING</b>								
<b>19-27-O STEERING GEAR ARM AND IDLER ARM - Cont'd</b>								
19-27-31	IDLER ARM PACKAGE . . . . .	6	1	2084 614				
	ARM KIT, RC1, RC2 . . . . .		1	1857 962	1857 962	1857 962	1857 962	
	ARM, Idler, RC1, RC2 . . . . .		1	-----	1734 335	1734 335	1734 335	
	RC3, RC4 . . . . .	8	1	-----	-----	-----	1734 330	1734 330
19-27-33	BRACKET, Idler Arm . . . . .		1	-----	1671 702	1671 702	1671 702	1671 702
19-27-34	BUSHING, Idler Arm . . . . .		1	1734 327	1734 327	1734 327	1734 327	1734 327
19-27-45	BOLT, Idler Arm . . . . .		1	2072 490	1734 326	1734 326	1734 326	1734 326
19-27-46	NUT, Bolt . . . . .	6	1	1825 351				
19-27-50	LINK, Center, RC1, RC2 . . . . .		1	2072 456	1673 008	1673 008	1673 008	
	RC3, RC4 . . . . .	8	1	-----	-----	-----	1672 980	1672 980
19-27-55	SEAL, Gear Arm . . . . .	6	1	1670 299				
	Idler Arm End. . . . .	6	1	2072 455				
	Center Link . . . . .		2	-----	1670 299	1670 299	1670 299	1670 299
<b>19-30-O STEERING WHEEL</b>								
19-30-4	WHEEL, Black Frost . . . . .	6	1	2207 804				
	Blue . . . . .	6	1	2207 802				
	Green . . . . .	6	1	2207 803				
	Red . . . . .	6	1	2207 805				
	Rubber, Black . . . . .		1	-----	2201 753			
	Rubber, Blue . . . . .		1	-----	2201 751			
	Rubber, Brown . . . . .		1	-----	2201 754			
	Rubber, Green . . . . .		1	-----	2201 752			
	Rubber, Red . . . . .		1	-----	2201 755			
	Plastic, Flat Rim, Clear and Black . . . . .		1	-----	2201 336			
	Plastic, Flat Rim, Clear and Blue . . . . .		1	-----	2201 334			
	Plastic, Flat Rim, Clear and Brown . . . . .		1	-----	2201 337			
	Plastic, Flat Rim, Clear and Green . . . . .		1	-----	2201 335			
	Rubber, Black, w/Std. Trans., use w/Horn Blowing Bar . . . . .	8	1	-----	-----	2201 753		
	Rubber, Blue, w/Std. Trans., use w/Horn Blowing Bar . . . . .	8	1	-----	-----	2201 751		
	Rubber, Brown, w/Std. Trans., use w/Horn Blowing Bar . . . . .	8	1	-----	-----	2201 754		
	Rubber, Green, w/Std. Trans., use w/Horn Blowing Bar . . . . .	8	1	-----	-----	2201 752		
	Rubber, Red, w/Std. Trans., use w/Horn Blowing Bar . . . . .	8	1	-----	-----	2201 755		
	Rubber, Blue, use w/Horn Blowing Ring, w/Auto. Trans.. . . . .	8	1	-----	-----	2201 313		
	Rubber, Brown, use w/Horn Blowing Ring, w/Auto. Trans.. . . . .	8	1	-----	-----	2201 315		
	Rubber, Gray, use w/Horn Blowing Ring, w/Auto. Trans.. . . . .	8	1	-----	-----	2201 316		
	Rubber, Red, use w/Horn Blowing Ring, w/Auto. Trans.. . . . .	8	1	-----	-----	2201 317		
	Plastic, Blue Pearl and Dark Blue, w/Auto. Trans. . . . .	8	1	-----	-----	2201 318		
	Plastic, Tan Pearl and Brown, w/Auto. Trans. . . . .	8	1	-----	-----	2201 320		
	Plastic, White Pearl and Black, w/Auto. Trans. . . . .	8	1	-----	-----	2201 321		
	Plastic, White Pearl and Blue, w/Auto. Trans. . . . .	8	1	-----	-----	2201 328		
	Plastic, White Pearl and Green, w/Auto. Trans. . . . .	8	1	-----	-----	2201 329		
	Plastic, White Pearl and Red, w/Auto. Trans. . . . .	8	1	-----	-----	2201 322		

★ Indicates use as required.

Numerals in parentheses ( ) refer to notes.

Printed in U.S.A.

☐ Indicates parts not listed in any previous parts book.

Prices and specifications subject to change without notice.

March 1, 1962 Supersedes May 31, 1961.

\* Indicates change or addition.



CODE	PART NAME AND DESCRIPTION	CYL.	PER CAR	VALIANT	PLYMOUTH	DESOTO	CHRYSLER	IMPERIAL
<b>POWER STEERING</b>								
<b>19-30-0 STEERING WHEEL - Cont'd</b>								
19-30-4	WHEEL - Cont'd							
	Plastic, White Pearl and Silver, w/Auto. Trans. . . . .	8	1	----	----	2201 330		
	Rubber, Black, RC1, RC2 . . . .	8	1	----	----	----	2201 785	
	Rubber, Blue, RC1, RC2 . . . .	8	1	----	----	----	2201 782	
	Rubber, Brown, RC1, RC2 . . . .	8	1	----	----	----	2201 784	
	Rubber, Cerise, RC1, RC2 . . . .	8	1	----	----	----	2201 786	
	Rubber, Green, RC1, RC2 . . . .	8	1	----	----	----	2201 783	
	Rubber, Red, RC1, RC2 . . . .	8	1	----	----	----	2201 787	
	Plastic, Clear and Blue . . . .	8	1	----	----	----	2201 788	
	Plastic, Clear and Black Frost . . . .	8	1	----	----	----	2201 791	
	Plastic, Clear and Cerise . . . .	8	1	----	----	----	2201 792	
	Plastic, Green Tint and Dark Green . . . . .	8	1	----	----	----	2201 789	
	Plastic, Tan Tint and Dark Brown	8	1	----	----	----	2201 790	
	Plastic, Clear and Red . . . .	8	1	----	----	----	2201 793	
	Plastic, Flat Rim, Black . . . .	8	1	----	----	----	----	2201 306
	Plastic, Flat Rim, Blue . . . .	8	1	----	----	----	----	2200 581
	Plastic, Flat Rim, Green . . . .	8	1	----	----	----	----	2201 304
	Plastic, Flat Rim, Red . . . .	8	1	----	----	----	----	2201 308
	Plastic, Flat Rim, Russet . . . .	8	1	----	----	----	----	2201 307
	Plastic, Flat Rim, Topaz . . . .	8	1	----	----	----	----	2201 305
19-30-18	NUT, Wheel . . . . .		1	145 032	2200 577	2200 577	2200 577	2200 577
<b>19-31-0 STEERING COLUMN BRACKET</b>								
19-31-1	BRACKET, w/Auto. Trans., RC1, RC2 . . . . .	8	1	----	----	1839 984	1902 223	
	w/Std. Trans. . . . .	8	1	----	----	1839 979		
	RC3, RC4 . . . . .	8	1	----	----	----	1902 210	
19-31-7	BRACE, to Windshield Frame							
	Upper . . . . .	8	1	----	----	----	----	1839 327
	Lower . . . . .	8	1	----	----	----	----	1902 362
19-31-14	SPACER, Bracket and Reinforcement . . . . .	8	2	----	----	----	2161 617	
19-31-19	NUT, w/WASHER, Upper Clamp	6	1	2076 232				
	STUD, Cap Attaching . . . . .	8	2	----	----	1901 587		
	SPEED NUT . . . . .	8	2	----	----	1327 986		
	NUT, Bracket Cap Attaching	8	2	----	----	----	H6012 032	
19-31-24	CAP, w/Auto. Trans. . . . .		1	----	1839 985	1839 985	1839 685	2080 720
	w/Std. Trans. . . . .		1	----	1839 980	1839 980		
<b>19-46-0 GEARSHIFT ROD OR TUBE</b>								
19-46-2	BOOT, Rod, w/Std. Trans. . . . .		1	----	2161 726			
19-46-3	TUBE, w/Std. Trans. . . . .		1	----	2201 794			
19-46-5	SPRING, Tube Anti-Shake, w/Std. Trans. . . . .		1	----	2201 795			
19-46-9	CUP, Tube Lever Spring Washer, w/Std. Trans. . . . .		1	----	2201 258			
19-46-10	SPRING, Tube Return, w/Std. Trans. . . . .		1	----	1632 808			
19-46-11	WASHER, Tube Lever Spring, w/Std. Trans. . . . .		1	----	2201 260			
19-46-16	LEVER, Tube, w/Std. Trans., 2nd and High . . . . .		1	----	*2201 772(1)			
	2nd and High . . . . .		1	----	*2122 039(2)			
	First and Reverse . . . . .		1	----	*2201 771(1)			
	First and Reverse . . . . .		1	----	*2122 038(2)			

NOTE 1: Contains Spool w/Knurled End.

NOTE 2: Contains Spool w/o Knurled End.

\* Indicates use as required.

⊕ Indicates parts not listed in any previous parts book.

\* Indicates change or addition.

Numerals in parentheses ( ) refer to notes.

Printed in U.S.A.

Prices and specifications subject to change without notice.

March 1, 1962 Supersedes May 31, 1961.

CODE	PART NAME AND DESCRIPTION	CYL	PER CAR	VALIANT	PLYMOUTH	DESOTO	CHRYSLER	IMPERIAL
<b>POWER STEERING</b>								
<b>19-46-O GEARSHIFT ROD OR TUBE - Cont'd</b>								
19-46-19	WASHER, Tube Lever, w/Std. Trans. . . . .		1	----	1670 932			
19-46-23	PIN, Tube, w/Std. Trans. . . .		1	----	1946 578			
19-46-24	RETAINER, Tube Lever Pin, w/Std. Trans. . . . .		1	----	2123 129			
19-46-26	SEAL, Tube Bushing Support, w/Std. Trans. . . . .		1	----	2123 012			
19-46-35	RETAINER, Tube Support Seal, w/Std. Trans. . . . .		1	----	2123 013			
<b>19-48-O GEARSHIFT CONTROL RODS</b>								
19-48-1	ROD, First and Reverse, w/Std. Transmission . . . .		1	----	2200 481	2260 864		
	2nd and High, w/Std. Transmission		1	----	2200 480(1)	2260 862		
	2nd and High, w/Std. Transmission		1	----	2260 863(2)			
	Police Cars, Taxi, High Performance, Heavy Duty, 2nd and High, w/Std. Trans. . . .		1	----	2260 862			
	Police Cars, Taxi, High Performance, Heavy Duty, First and Reverse, w/Std. Trans. .		1	----	2260 864			
19-48-7	SMALL PARTS PACKAGE, w/Std. Trans. . . . .		1	----	2240 631	2240 631		
19-48-12	CLAMP, 2nd and High w/Std. Transmission . . . . .		1	----	2204 274	2204 274		
	First and Reverse, Heavy Duty, w/Std. Transmission		1	----	2204 274	2204 274		
19-48-16	SWIVEL. . . . .		2	----	1731 118	1731 118		
19-48-20	WASHER, Swivel, Spring . . . .		2	----	6012 072	6012 072		
19-48-21	WASHER, Swivel, Plain . . . .		2	----	632 258	632 258		
	Control Rod, w/Std. Transmission . . . . .		4	----	631 217	631 217		
	Heavy Duty . . . . .		4	----	1533 190	1533 190		
19-48-23	CLIP, Cotter . . . . .		2	----	1137 669	1137 669		
<b>19-54-O POWER STEERING OIL PUMP</b>								
19-54-2	PUMP PACKAGE, w/170, 225, 318 cu. in. Eng. . . . .		1	2240 620	2240 620(3)			
	w/318, w/361, 383, 413 cu. in. Eng. . . . .	8	1	----	2196 082(3)	2196 082	2196 082	2196 082

NOTE 1: Use w/o Clamp

NOTE 2: Use w/Clamp

NOTE 3: 2240 620 and 2196 082 Pumps are being used intermittently on the RP2 w/318 cu. in. Eng. To distinguish the difference, 2196 082 can easily be identified by the swivel type hinge mounting brackets. Use the 4th column of the chart for detail parts for these cars equipped with the 2196 082 Pump.