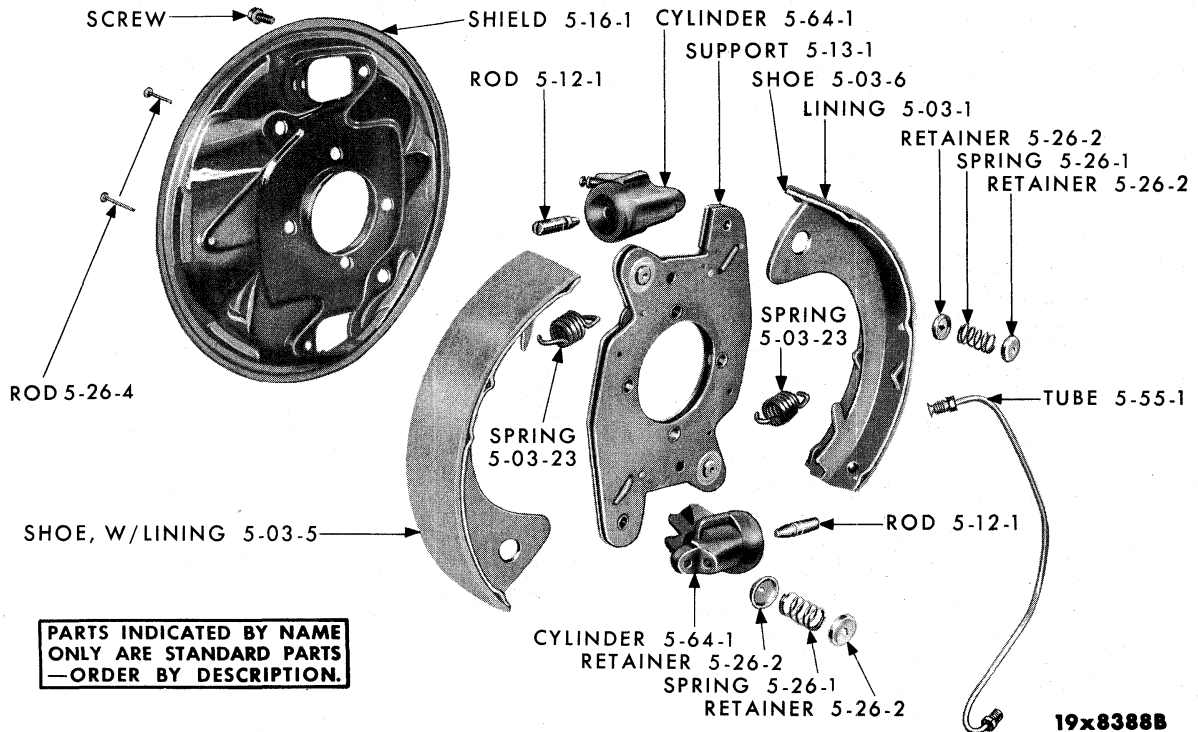


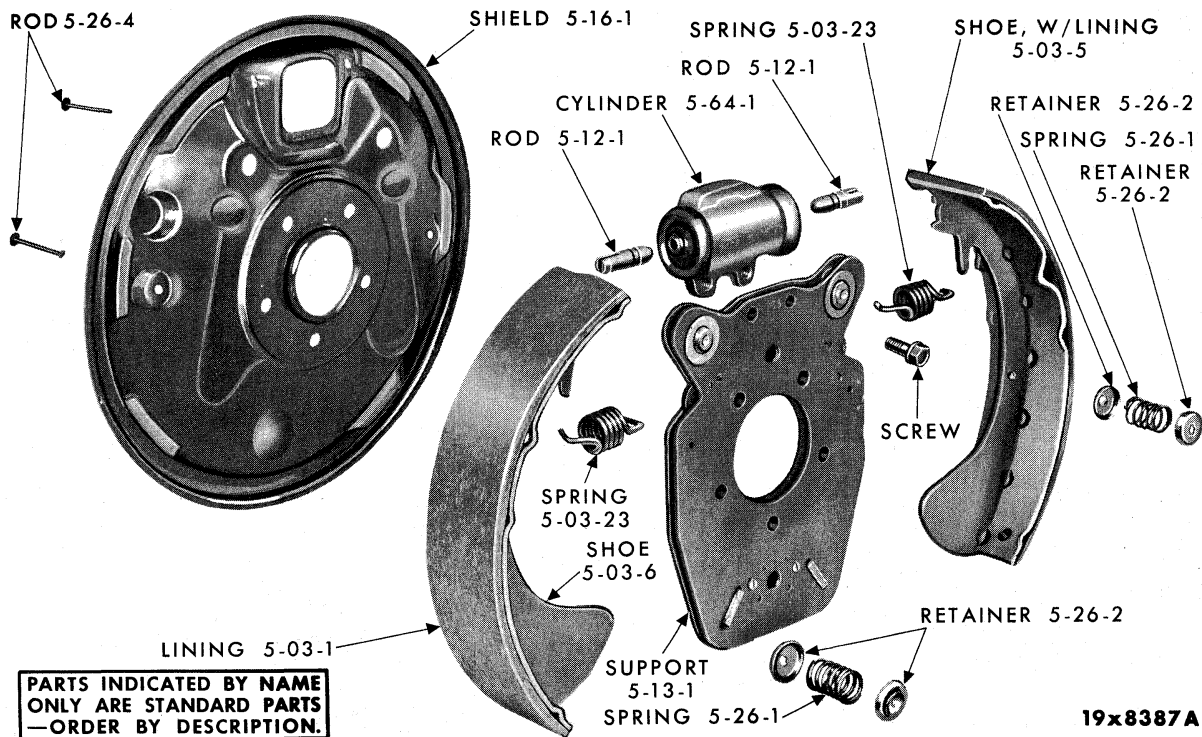
19x8500B

HYDRAULIC BRAKE SYSTEM

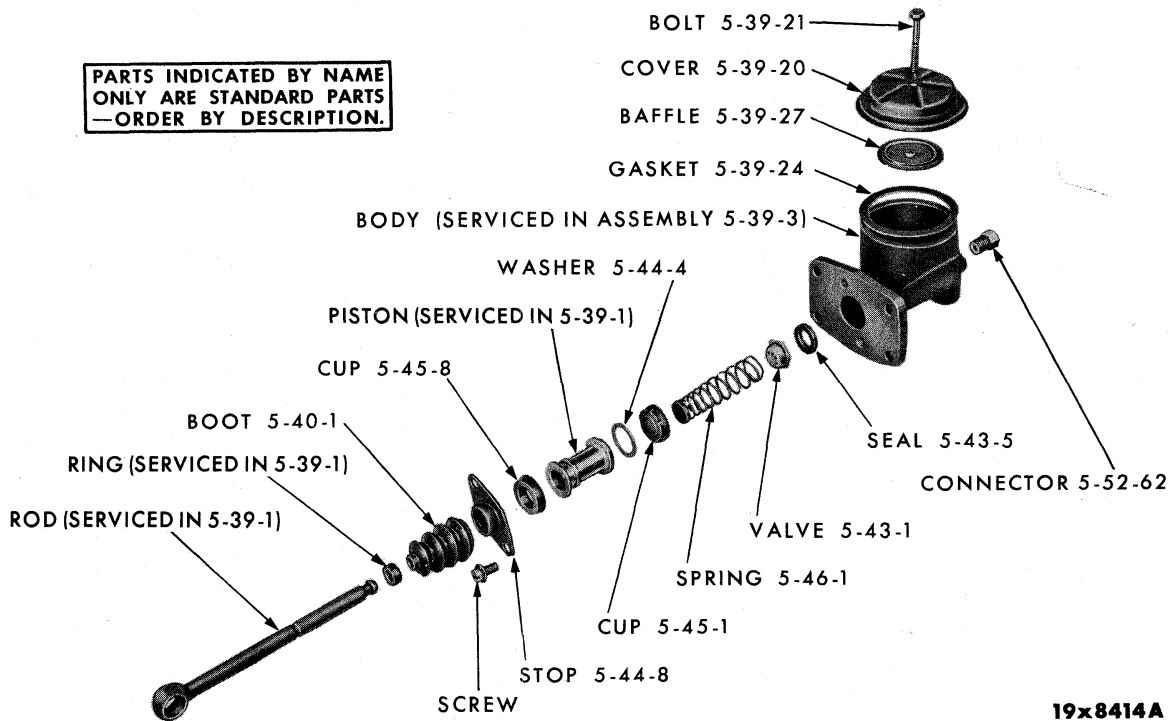
GROUP 5 - BRAKE-SERVICE



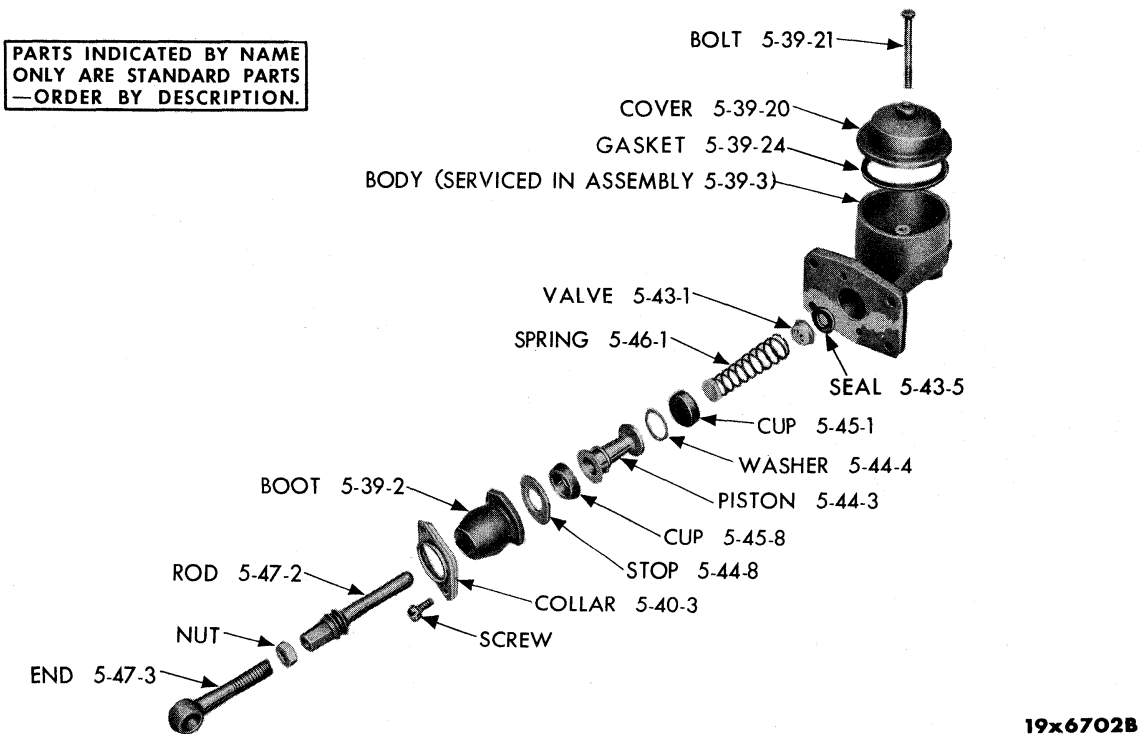
FRONT WHEEL BRAKE



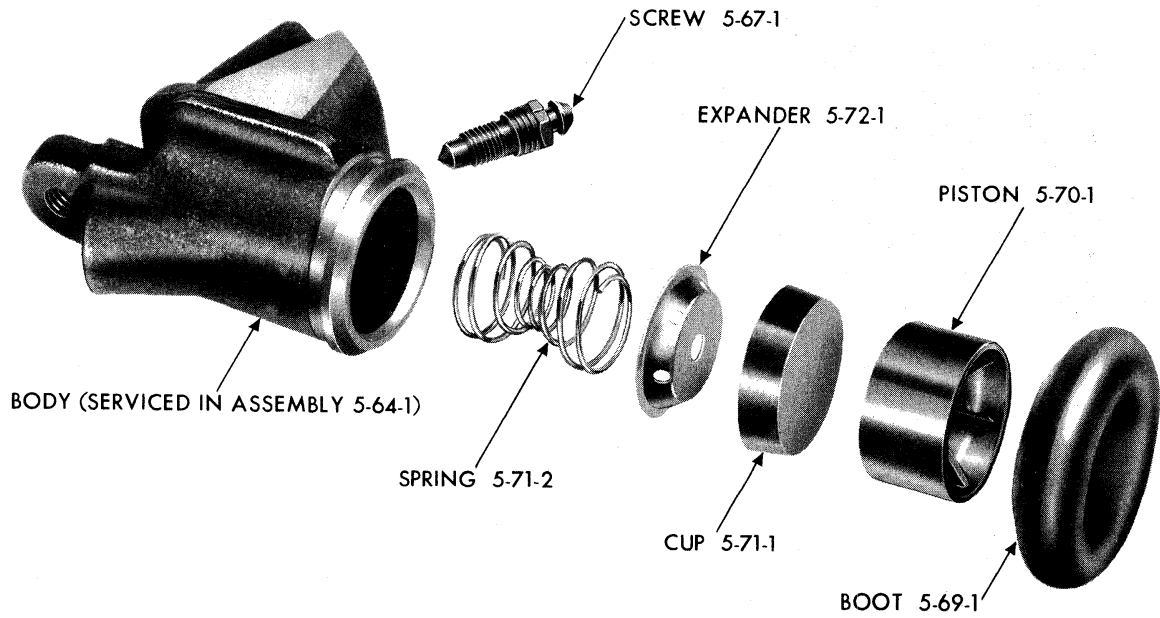
REAR WHEEL BRAKE



MASTER CYLINDER - USED WITHOUT POWER BRAKE

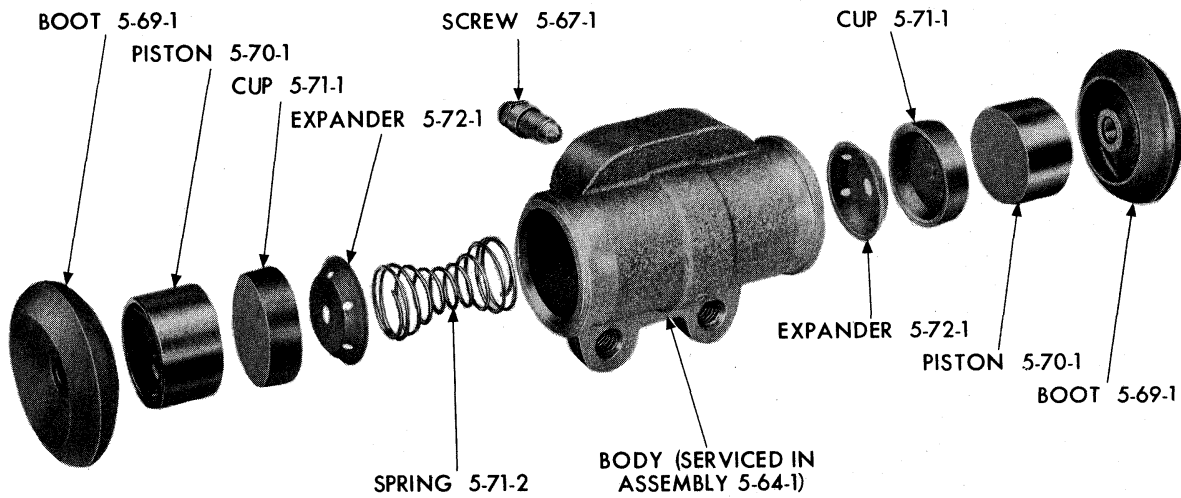


MASTER CYLINDER - USED WITH POWER BRAKE



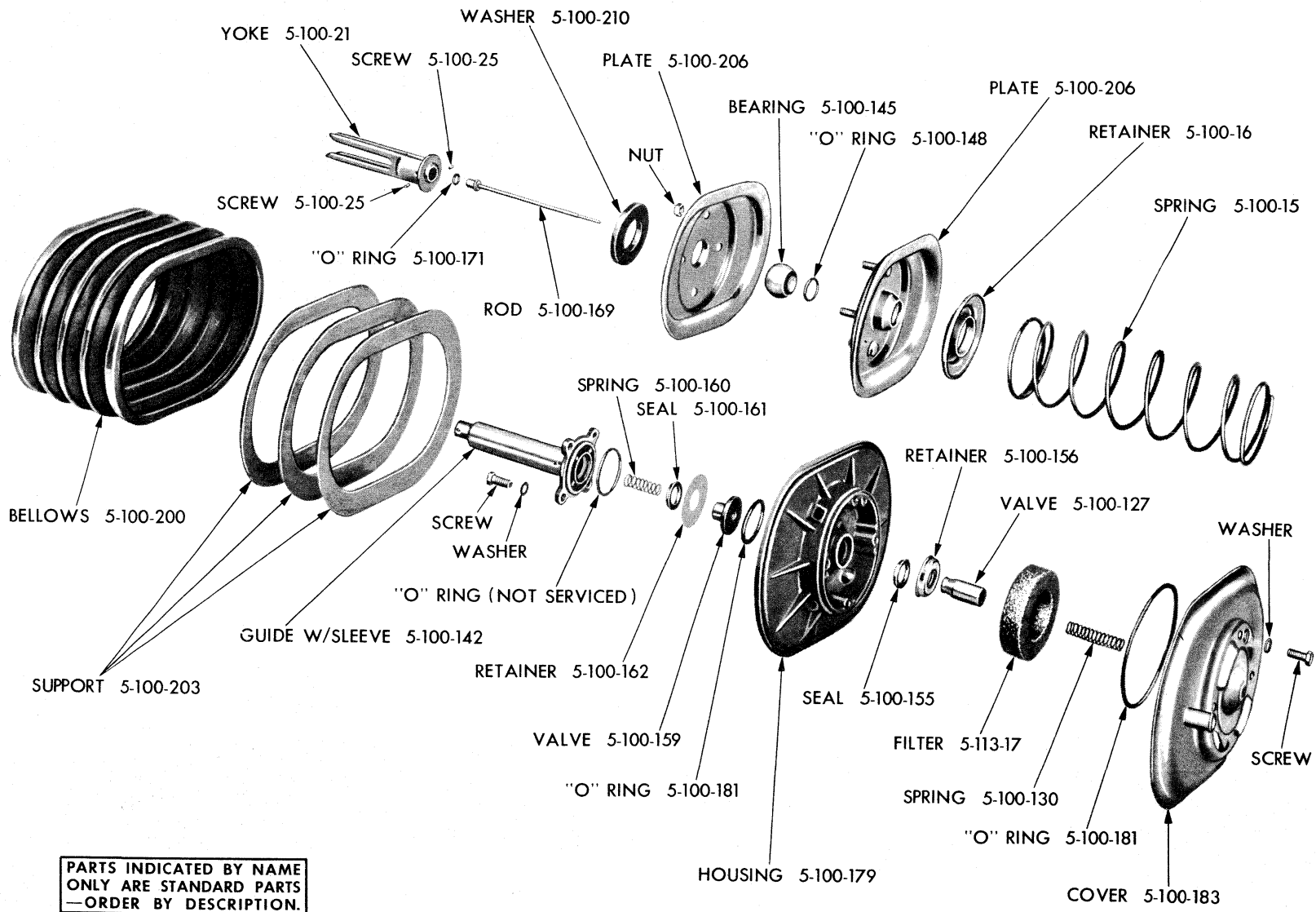
19x6947

FRONT WHEEL BRAKE CYLINDER



19x6949A

REAR WHEEL BRAKE CYLINDER



PARTS INDICATED BY NAME
ONLY ARE STANDARD PARTS
—ORDER BY DESCRIPTION.

19x6981

POWER BRAKE POWER UNIT - BELLOWS TYPE

CODE	PART NAME AND DESCRIPTION	NO. OF CYL.	PLYMOUTH	DODGE	DESOTO	CHRYSLER AND IMPERIAL	PER CAR	PART NUMBER
------	---------------------------	-------------	----------	-------	--------	-----------------------	---------	-------------

GROUP 5 - BRAKE-SERVICE

5-01-0 BRAKE FLUID								
5-01-2	BRAKE FLUID, Hi-Temp., 8 oz. Can	6-8	60	60	60	60	★	1879 268
	1 pint Can	6-8	60	60	60	60	★	1879 269
	1 Quart Can	6-8	60	60	60	60	★	1879 270
	1 gallon Can	6-8	60	60	60	60	★	1879 271
	5 gallon Can	6-8	60	60	60	60	★	1879 272
	30 gallon Drum	6-8	60	60	60	60	★	1879 273
5-03-0 WHEEL BRAKE SHOE AND LINING								
5-03-1	LINING PACKAGE, 11" x 2" Brakes, PP1, PP2, except Sub., PD3 2 D., Sp.Cl.Cp., 4 D., Sp. 4 D., PD4 2 D., Sp.Cl.Cp., Cv. Cp., 4 D., Sp. 4 D.	6-8	60	60	-	-	1	1879 399
	PP1, PP2, PD3, PD4, Sub.	6-8	60	60	-	-	1	1879 398
	11 x 2 1/2" Brakes, PD1, PD2, PD3 Taxi, PD4 Taxi, PC1 except Sub.	6-8	-	60	60	60	1	1879 401
	12" x 2 1/2" Brakes, PC1, PC2, PC3.	6-8	60	60	60	60	1	1879 396
	PC3-300	8	-	-	-	60	1	1843 028
	PY1.	8	-	-	-	60	1	1879 404
5-03-5	SHOE, w/LINING, Front Wheel, 11" x 2" Brakes, PP1, PP2, PD3, PD4, except Sub.	6-8	60	60	-	-	4	1943 814
	11" x 2 1/2" Brakes, PP1, PP2, PD3, PD4, Sub., PD1, PD2, PD3 Taxi, PD4 Taxi, PC1 except Sub.	6-8	60	60	60	60	4	1943 804
	Rear Wheel, 11" x 2" Brakes, PD3, PD4	6-8	60	60	-	-	4	1943 814
	11" x 2 1/2" Brakes, PD1, PD2, PD3 Taxi, PD4 Taxi, PC1 except Sub.	6-8	-	60	60	60	4	1943 804
	Front and Rear Wheel, 12" x 2 1/2" Brakes, PC1, PC2, PC3, PC3-300	6-8	60	60	60	60	8	2200 122
	Front and Rear Wheel, Front Shoe, PY1	8	-	-	-	60	4	1857 063
	Front and Rear Wheel, Rear Shoe, PY1.	8	-	-	-	60	4	1857 045
5-03-6	SHOE, Front Wheel, 11" x 2" Brakes, PP1, PP2, PD3, PD4, except Sub.	6-8	60	60	-	-	4	1943 805
	11" x 2 1/2" Brakes, PP1, PP2, PD3, PD4, Sub., PD1, PD2, PD3 Taxi, PD4 Taxi, PC1 except Sub.	6-8	60	60	60	60	4	1943 806
	Rear Wheel, 11" x 2" Brakes, PD3, PD4	6-8	60	60	-	-	4	1943 805
	11" x 2 1/2" Brakes, PD1, PD2, PD3 Taxi, PD4 Taxi, PC1 except Sub.	6-8	-	60	60	60	4	1943 806
	Front and Rear Wheel, 12" x 2 1/2" Brakes	6-8	60	60	60	60	8	1943 674
5-03-9	PACKAGE, Wheel Brake Dampener	6-8	60	60	60	60	1	E2084 257
5-03-23	SPRING, Brake Shoe Return, 11" Brakes, PC1 except Sub.	6-8	60	60	60	60	8	1944 258
	12" Brakes.	6-8	60	60	60	60	8	1944 257
5-12-0 WHEEL CYLINDER PISTON PUSH ROD								
5-12-1	ROD	6-8	60	60	60	60	8	1329 890
5-13-0 WHEEL BRAKE SUPPORT								
5-13-1	SUPPORT, Front, Right, 11" Brakes, PC1 except Sub.	6-8	60	60	60	60	1	1943 838
	Front, Left, 11" Brakes, PC1 except Sub.	6-8	60	60	60	60	1	1943 839
	Rear, 11" Brakes, PC1 except Sub.	6-8	60	60	60	60	2	1943 813

★ Indicates use as required.

Numerals in parentheses () refer to notes.

Printed in U.S.A.

☐ Indicates parts not listed in any previous parts book.

Prices and specifications subject to change without notice.

* Indicates change or addition.

CODE	PART NAME AND DESCRIPTION	NO. OF CYL.	PLYMOUTH	DODGE	DESOTO	CHRYSLER AND IMPERIAL	PER CAR	PART NUMBER
5-13-0 WHEEL BRAKE SUPPORT - Cont'd								
5-13-1	SUPPORT - Cont'd							
	Front, Right, 12" Brakes, PC1, PC2, PC3 . . .	6-8	60	60	60	60	1	1943 796
	Front, Left, 12" Brakes, PC1, PC2, PC3 . . .	6-8	60	60	60	60	1	1943 797
	Front, Right, 12" Brakes, PC3-300, PY1 . . .	8	-	-	-	60	1	1943 798
	Front, Left, 12" Brakes, PC3-300, PY1 . . .	8	-	-	-	60	1	1943 799
	Rear, 12" Brakes	6-8	60	60	60	60	2	1943 832
5-13-9	BOLT, Front Support Mounting, 7/16"-20 x 1 3/4"	6-8	60	60	60	60	4	1615 460
	7/16"-20 x 2 3/4"	6-8	60	60	60	60	2	1850 938
	7/16"-20 x 3 1/8"	6-8	60	60	60	60	2	1943 691
	Rear Support Mounting, 3/8"-24 x 1 1/4" . . .	6-8	60	60	60	50	10	1484 652
5-13-10	NUT, Front Wheel Mounting	6-8	60	60	60	60	4	* 601 014
	Rear Wheel Mounting	6-8	60	60	60	60	10	* 120 369
5-16-0 WHEEL BRAKE DUST SHIELD								
5-16-1	SHIELD, Front, Right, 11" x 2" Brakes, PP1, PP2, PD3, PD4, except Sub.	6-8	60	60	-	-	1	1857 058
	Front, Left, 11" x 2" Brakes, PP1, PP2, PD3, PD4, except Sub.	6-8	60	60	-	-	1	1857 059
	Front, Right, 11" x 2 1/2" Brakes, PP1, PP2, PD3, PD4, Sub., PD1, PD2, PD3 Taxi, PD4 Taxi, PC1 except Sub.	6-8	60	60	60	60	1	1857 056
	Front, Left, 11" x 2 1/2" Brakes, PP1, PP2, PD3, PD4, Sub., PD1, PD2, PD3 Taxi, PD4 Taxi, PC1 except Sub.	6-8	60	60	60	60	1	1857 057
	Front, Right, 12" x 2 1/2" Brakes, PC1, PC2, PC3	6-8	60	60	60	60	1	1943 666
	PC3-300, PY1	8	-	-	-	60	1	1943 686
	Front, Left, 12" x 2 1/2" Brakes, PC1, PC2, PC3	6-8	60	60	60	60	1	1943 667
	PC3-300, PY1	8	-	-	-	60	1	1943 687
	Rear, 11" x 2" Brakes, PD3, PD4	6-8	60	60	-	-	2	1857 062
	11" x 2 1/2" Brakes, PD1, PD2, PD3 Taxi, PD4 Taxi, PC1 except Sub.	6-8	-	60	60	60	2	1857 061
	12" x 2 1/2" Brakes	6-8	60	60	60	60	2	1857 044
5-22-0 WHEEL BRAKE ADJUSTING CAM DUST SHIELD SEAL								
5-22-8	SEAL	6-8	60	60	60	60	8	1633 111
5-26-0 WHEEL BRAKE SHOE GUIDE								
5-26-1	SPRING	6-8	60	60	60	60	8	600 071
5-26-2	RETAINER, Spring, Upper	6-8	60	60	60	60	8	600 072
	Lower	6-8	60	60	60	60	8	600 073
5-27-0 WHEEL BRAKE PEDAL								
5-27-1	PEDAL, w/o Power Brakes, PC1	6-8	60	60	60	60	1	1940 173
	w/Power Brakes, PC1, PC2, PC3	6-8	60	60	60	60	1	1940 166
	PY1	8	-	-	-	60	1	1738 271
5-27-2	BUSHING	6-8	60	60	60	60	★	1637 779
5-27-9	BRACE, Instrument Panel Reinforcement to Pedal Bracket	6-8	60	-	-	-	1	1901 774
	Windshield Frame to Pedal Bracket, PC1, PC2, PC3	6-8	-	60	60	-	1	1901 788
5-27-10	PIN, Power Brake Pedal to Arm	6-8	60	60	60	60	1	1637 773
5-27-15	WASHER, Power Brake Pedal Trigger Spring.	6-8	60	60	60	60	1	6000 165
5-27-22	ARM, Power Brake Pedal Trigger	6-8	60	60	60	60	1	1675 214
5-27-35	PIVOT, Power Brake Pedal Trigger	6-8	60	60	60	60	1	1635 344

★ Indicates use as required.

Numerals in parentheses () refer to notes.

Printed in U.S.A.

☐ Indicates parts not listed in any previous parts book.

Prices and specifications subject to change without notice.

Dec. 9, 1960 Supersedes April 20, 1960.

* Indicates change or addition.

CODE	PART NAME AND DESCRIPTION	NO. OF CYL.	PLYMOUTH	DODGE	DESOTO	CHRYSLER AND IMPERIAL	PER CAR	PART NUMBER
5-28-0 BRAKE PEDAL PAD								
5-28-8	PAD, w/Std. Trans., w/o Power Strg.	6-8	60	60	-	-	1	1940 202
	w/Std. Trans., w/Power Strg.	6-8	60	60	-	-	1	2122 300
	w/PowerFlite and Auto. 3 Speed Trans., PC1, PC2, PC3	6-8	60	60	60	60	1	1820 005
	PY1	8	-	-	-	60	1	1946 357
5-29-0 BRAKE PEDAL SHAFT								
5-29-1	SHAFT, w/Std. Trans.	6-8	60	60	-	-	1	1730 009
	w/PowerFlite and Auto. 3 Speed Trans.	6-8	60	60	60	60	1	1637 782
5-31-0 BRAKE PEDAL BRACKET								
5-31-12	GASKET, Brake Bracket Reinforcement, PY1.	8	-	-	-	60	1	B2200 058
5-31-15	BRACKET, w/o Power Brakes, PC1	6-8	60	60	60	60	1	1940 162
	w/Power Brakes	6-8	60	60	60	60	1	1940 161
5-34-0 BRAKE PEDAL RETURN SPRING								
5-34-1	SPRING, w/Power Brakes	6-8	60	60	60	60	1	1730 077
5-39-0 MASTER CYLINDER								
5-39-1	REPAIR PACKAGE, w/o Power Brakes, w/o Piston, PC1	6-8	60	60	60	60	1	1879 303
	w/o Power Brakes, w/Piston, PC1	6-8	60	60	60	60	1	1881 987
	w/Power Brakes, w/Piston	6-8	60	60	60	60	1	1881 985
5-39-3	CYLINDER, w/o Power Brakes, PC1	6-8	60	60	60	60	1	1829 400
	w/Power Brakes	6-8	60	60	60	60	1	1843 413
5-39-4	PACKAGE, Master Cylinder Cover	6-8	60	60	60	60	1	1752 470
5-39-18	GASKET	6-8	60	60	60	60	1	1559 753
5-39-20	COVER	6-8	60	60	60	60	1	1731 225
5-39-21	SCREW, Cover	6-8	60	60	60	60	1	1731 227
5-39-24	GASKET, Cover	6-8	60	60	60	60	1	2122 276
5-39-27	BAFFLE, Cover	6-8	60	60	60	60	1	1731 226
5-40-0 MASTER CYLINDER BOOT								
5-40-1	BOOT, w/o Power Brakes	6-8	60	60	60	60	1	1828 388
	w/Power Brakes	6-8	60	60	60	60	1	1316 628
5-40-3	COLLAR, w/Power Brakes	6-8	60	60	60	60	1	1316 627
5-42-0 MASTER CYLINDER REINFORCEMENT								
5-42-1	REINFORCEMENT, w/o Power Brakes, PC1	6-8	60	60	60	60	1	1940 195
5-43-0 MASTER CYLINDER VALVE								
5-43-1	VALVE	6-8	60	60	60	60	1	1318 446
5-43-5	SEAL	6-8	60	60	60	60	1	1617 379
5-44-0 MASTER CYLINDER PISTON								
5-44-3	PISTON	6-8	60	60	60	60	1	1828 659
5-44-4	WASHER, Piston Cup	6-8	60	60	60	60	1	857 443
5-44-8	STOP, w/o Power Brakes	6-8	60	60	60	60	1	1828 389

★ Indicates use as required.

Numerals in parentheses () refer to notes.

Printed in U.S.A.

Ⓚ Indicates parts not listed in any previous parts book.

Prices and specifications subject to change without notice.

* Indicates change or addition.

1960 PASSENGER CAR PARTS CATALOG

BRAKE - SERVICE

CODE	PART NAME AND DESCRIPTION	NO. OF CYL.	PLYMOUTH	DODGE	DESOTO	CHRYSLER AND IMPERIAL	PER CAR	PART NUMBER
5-45-0 MASTER CYLINDER PISTON CUP								
5-45-8	CUP, Secondary	6-8	60	60	60	60	1	958 659
5-46-0 MASTER CYLINDER PISTON RETURN SPRING								
5-46-1	SPRING	6-8	60	60	60	60	1	1738 268
5-47-0 MASTER CYLINDER PISTON PUSH ROD								
5-47-2	ROD, w/Power Brakes	6-8	60	60	60	60	1	1731 202
5-47-3	END, w/Power Brakes	6-8	60	60	60	60	1	1675 218
5-47-4	BOLT, End, w/o Power Brakes, PC1	6-8	60	60	60	60	1	1616 915
5-47-6	PIN, w/Power Brakes	6-8	60	60	60	60	1	1637 784
5-47-6	WASHER, Push Rod End Spring, w/Power Brakes	6-8	60	60	60	60	1	1637 805
5-47-7	NUT, End Bolt, w/o Power Brakes, PC1	6-8	60	60	60	60	1	2122 266
5-47-10	RETAINER, End Pin, w/Power Brakes	6-8	60	60	60	60	1	1671 569
5-47-10	RING, w/o Power Brakes, PC1	6-8	60	60	60	60	1	1737 167
5-52-0 MASTER CYLINDER BRAKE TUBE								
5-52-3	NUT, Master Cylinder to Brake Tube Tee Tube, to Tee	6-8	60	60	60	60	1	*1739 226
	To Master Cylinder	6-8	60	60	60	60	1	1828 461
5-52-62	CONNECTOR	6-8	60	60	60	60	1	1828 396
5-53-0 BRAKE FRAME TUBE								
5-53-3	TUBING, 25 Foot Roll, 3/16" O.D.	6-8	60	60	60	60	★	1843 251
	1/4" O.D.	6-8	60	60	60	60	★	1843 252
	5/16" O.D.	6-8	60	60	60	60	★	1843 253
	3/8" O.D.	6-8	60	60	60	60	★	1843 254
5-53-4	COVER, Tube, 25 Foot Roll, for 3/16" O.D. Tube	6-8	60	60	60	60	★	1843 257
	For 1/4" O.D. Tube	6-8	60	60	60	60	★	1843 258
	For 5/16" O.D. Tube	6-8	60	60	60	60	★	1843 259
5-55-0 WHEEL CYLINDER CONNECTING TUBE								
5-55-1	TUBE, Right, 11" Brakes, PC1 except Sub.	6-8	60	60	60	60	1	1633 092
	Left, 11" Brakes, PC1 except Sub.	6-8	60	60	60	60	1	1633 093
	Right, 12" Brakes	6-8	60	60	60	60	1	1558 192
	Left, 12" Brakes	6-8	60	60	60	60	1	1558 191
5-56-0 BRAKE TUBE OR HOSE CLIP								
5-56-2	CLIP, Brake Tube	6-8	60	60	60	60	★	2123 341
		6-8	60	60	60	60	★	1119 423
5-57-0 BRAKE TUBE BRACKET								
5-57-2	BRACKET, Front, PC1	6-8	60	60	60	60	2	1739 248
	PC2, PC3, PY1	8	-	-	-	60	2	2123 212
	Rear, PP1, PP2, except Sub.	6-8	60	-	-	-	1	2123 213
	PP1, PP2, Sub.	6-8	60	60	60	60	1	2123 214

★ Indicates use as required. Numerals in parentheses () refer to notes. Printed in U.S.A.
 ☐ Indicates parts not listed in any previous parts book. Prices and specifications subject to change without notice.
 Apr. 20, 1960 Supersedes Oct. 1, 1959. Page 5-10 * Indicates change or addition.

CODE	PART NAME AND DESCRIPTION	NO. OF CYL.	PLYMOUTH	DODGE	DESOTO	CHRYSLER AND IMPERIAL	PER CAR	PART NUMBER
5-58-0 BRAKE TUBE TEE								
5-58-1	TEE, Master Cylinder Tube to Brake Tube, PC1	6-8	60	60	60	60	1	2123 217
	PC2, PC3, PY1	8	-	-	-	60	1	2123 218
	w/Ram Manifold, PD1, PD2, PD4	8	60	60	60	-	1	*2123 204
	Rear Axle Brake Tube, PC1, PC2, PC3	6-8	60	60	60	60	1	1940 622
	PY1	8	-	-	-	60	1	2070 240
5-62-0 BRAKE FLEXIBLE HOSE								
5-62-1	HOSE, Front Wheel, PC1	6-8	60	60	60	60	2	1739 249
	PC2, PC3, PY1	8	-	-	-	60	2	1554 347
	Rear Wheel, PC1, PC2, PC3	6-8	60	60	60	60	1	1739 249
	PY1	8	-	-	-	60	1	1739 215
5-62-7	GASKET, Front Wheel Flexible Hose	6-8	60	60	60	60	2	1406 748
5-62-20	LOCK, Hose to Bracket	6-8	60	60	60	60	3	392 911
5-63-0 WHEEL CYLINDER PACKAGE								
5-63-1	PACKAGE, Wheel Cylinder Service, Front	6-8	60	60	60	60	2	2084 254
	Rear	6-8	60	60	60	60	2	1818 639
5-63-3	PACKAGE, Wheel Cylinder Piston, Front	6-8	60	60	60	60	2	2084 255
	Rear	6-8	60	60	60	60	2	2084 256
5-64-0 WHEEL BRAKE CYLINDER ASSEMBLY								
5-64-1	CYLINDER, Front, Upper, Right	6-8	60	60	60	60	1	1857 054
	Upper, Left	6-8	60	60	60	60	1	1857 055
	Lower, Right	6-8	60	60	60	60	1	1857 052
	Lower, Left	6-8	60	60	60	60	1	1857 053
	Rear	6-8	60	60	60	60	2	1857 051
5-64-2	BOLT, Wheel Cylinder Mounting	6-8	60	60	60	60	8	1943 840
5-67-0 WHEEL CYLINDER BLEEDER SCREW								
5-67-1	SCREW	6-8	60	60	60	60	6	1261 834
5-69-0 WHEEL CYLINDER BOOT								
5-69-1	BOOT, Front Wheel	6-8	60	60	60	60	4	1943 690
	Rear Wheel	6-8	60	60	60	60	4	1136 872
5-70-0 WHEEL CYLINDER PISTON								
5-70-1	PISTON	6-8	60	60	60	60	8	1312 830
5-71-0 WHEEL CYLINDER PISTON CUP								
5-71-1	CUP	6-8	60	60	60	60	8	1674 080
5-71-2	SPRING, Wheel Cylinder Piston Return, Front Wheel	6-8	60	60	60	60	4	1614 894
	Rear Wheel	6-8	60	60	60	60	2	1633 106
5-72-0 WHEEL CYLINDER PISTON CUP EXPANDER								
5-72-1	EXPANDER	6-8	60	60	60	60	8	1674 081

★ Indicates use as required.

Numerals in parentheses () refer to notes.

Printed in U.S.A.

☐ Indicates parts not listed in any previous parts book.

Prices and specifications subject to change without notice.

* Indicates change or addition.

Page 5-11

Apr. 20, 1960 Supersedes Oct. 1, 1959

1960 PASSENGER CAR PARTS CATALOG BRAKE - SERVICE

CODE	PART NAME AND DESCRIPTION	NO. OF CYL.	PLYMOUTH	DODGE	DESOTO	CHRYSLER AND IMPERIAL	PER CAR	PART NUMBER
5-100-O POWER BRAKE POWER UNIT								
5-100-1	PACKAGE, Repair, for 1675 213 Unit	6-8	60	60	60	60	1	1675 001
	For 1735 620 and 2123 040 Power Unit	6-8	60	60	60	60	1	*1940 788
	For 2084 809 Field Installed Power Brakes, Major Overhaul	6-8	60	60	60	60	1	2084 916
	For 2084 809 Field Installed Power Brakes, Minor Overhaul	6-8	60	60	60	60	1	2084 917
5-100-2	POWER UNIT, Bellows Type	6-8	60	60	60	60	1	1675 213
	Cylinder Type	6-8	60	60	60	60	1	1735 620
	Cylinder Type, w/Ram Manifold, PD1, PD2, PD4, PC3-300	8	60	60	60	60	1	2123 040
5-100-3	PACKAGE, Cylinder Seal, for 1735 620 and 2123 040 Power Unit	6-8	60	60	60	60	1	*1940 787
5-100-34	LEVER, Brake Pedal	6-8	60	60	60	60	1	1738 272
5-100-35	BUSHING, Lever Pin	6-8	60	60	60	60	2	1637 793
5-100-105	REINFORCEMENT, Bracket, PC1, PC2, PC3, PY1	6-8 8	60 -	60 -	60 -	60 60	1	1940 194 1675 223
5-100-110	CAM, Pedal Adjusting	6-8	60	60	60	60	1	1737 157
5-100-111	COLLAR, Adjusting Cam	6-8	60	60	60	60	1	1674 302
5-100-113	WASHER, Adjusting Cam, Plain	6-8	60	60	60	60	1	1685 757
	Lock	6-8	60	60	60	60	1	1737 158
5-100-152	PACKAGE, Piston Packing, for 1735 620 and 2123 040 Power Unit	6-8	60	60	60	60	1	*1820 003

COMPONENT PARTS FOR POWER BRAKE POWER UNITS

POWER UNIT

PART TYPE CODE	PART NAME	1675 213	1735 620 and 2123 040
5-100-7	SHELL	----	1739 852
5-100-8	SEAL, Shell	----	1739 853
5-100-15	SPRING, Return	----	1739 839
5-100-20	ROD, Piston, w/YOKE	----	1739 842
5-100-21	YOKE	1820 011	----
5-100-25	SCREW, Set	1675 003	----
5-100-27	WASHER, Piston Rod Stop Cushion	----	1675 099
5-100-39	BEARING, Piston Rod	----	1940 790
5-100-120	SCREW, Inspection Hole	1673 634	132 096
5-100-121	GASKET, Inspection Hole Screw	1674 993	1675 137
5-100-127	VALVE, Air	1674 944	1739 847
5-100-130	SPRING, Air Valve	1676 486	----
5-100-137	PIN, Piston Plate Spiral	----	1675 009
5-100-138	PLATE, Piston	----	1739 832
5-100-139	PACKING, Piston	----	1739 834
5-100-140	PLATE, Piston Packing	----	1739 836
5-100-141	RING, Piston Packing	----	1739 835
5-100-142	GUIDE, w/SLEEVE	1820 009	----
5-100-143	WICK, Piston Packing	----	1675 013
5-100-144	PLATE, Packing Wick Retaining	----	1739 838
5-100-145	BEARING, Guide Sleeve	1674 970	----
5-100-146	SCREW, Piston Packing Plate	----	1675 143
5-100-148	SEAL, Bearing to Guide Sleeve	1674 972	----
	"O" RING, Bearing to Mounting Plate	1674 974	----
5-100-155	SEAL, Air Valve	1674 949	----
5-100-156	RETAINER, Air Valve Seal	1674 950	----
5-100-158	HOSE, Vacuum	----	1675 124

★ Indicates use as required. Numerals in parentheses () refer to notes. Printed in U.S.A.
 ☐ Indicates parts not listed in any previous parts book. Prices and specifications subject to change without notice.
 Dec. 9, 1960 Supersedes April 20, 1960. Page 5-12 * Indicates change or addition.

5-100-O POWER BRAKE POWER UNIT - Cont'd

COMPONENT PARTS FOR POWER BRAKE POWER UNITS - Cont'd

PART TYPE CODE	PART NAME	POWER UNIT	
		1675 213	1735 620 and 2123 040
5-100-159	VALVE, Vacuum	1674 952	---- --
	SEAT, Poppet Valve	---- --	1675 118
5-100-160	SPRING, Vacuum Valve	1674 955	1675 122
5-100-161	SEAL, Vacuum Valve	1674 949	---- --
5-100-162	RETAINER, Vacuum Valve Seal	1674 954	---- --
5-100-163	DIAPHRAGM, Poppet Valve Seat	---- --	1675 123
5-100-168	EXTENSION, Valve Stem, w/CUP	---- --	1675 109
5-100-169	ROD, Valve, w/BUMPER	1820 012	---- --
5-100-171	"O" RING, Valve Rod Bumper	1674 989	---- --
5-100-173	SPRING, Valve Stem	---- --	1676 487
5-100-174	RING, Valve Stem Snap	---- --	1675 104
5-100-175	SEAL, Valve Stem	---- --	1675 128
5-100-176	DIAPHRAGM, Valve Applying	---- --	1675 112
5-100-177	RETAINER, Diaphragm	---- --	1675 113
5-100-178	WASHER, Diaphragm Retainer	---- --	1675 117
5-100-179	HOUSING, Valve	1674 942	---- --
5-100-180	RETAINER, Valve Stem Spring	---- --	1673 620
5-100-181	"O" RING, Valve Housing to Guide	1674 957	---- --
	"O" RING, Valve Housing to Cover	1674 991	---- --
5-100-182	WASHER, Valve Stem	---- --	1820 025
5-100-183	PLATE, Air Cleaner, w/TUBE, for 1735 620 Power Unit	---- --	1820 002
	PLATE, Air Cleaner, w/TUBE, for 2123 040 Power Unit	---- --	2123 517
	COVER, Valve Housing	1820 013	---- --
5-100-186	END, Valve Stem	---- --	1739 849
5-100-188	SCREW, Diaphragm Retainer	---- --	1675 143
5-100-200	BELLOWS, Power Unit	1820 007	---- --
5-100-201	SPRING, Bellows Return	1820 010	---- --
5-100-202	RETAINER, Bellows Return Spring	1674 965	---- --
5-100-203	PLATE, Bellows Spacer	1820 008	---- --
5-100-206	PLATE, Mounting, Inner	1674 966	---- --
	Outer	1674 968	---- --
	End	---- --	1739 851
5-100-207	BOLT, End Plate	---- --	1675 146
	Mounting Ring	---- --	1735 640
5-100-208	RING, Mounting	---- --	1675 132
5-100-210	WASHER, Stop and Seal	1674 975	---- --

CODE	PART NAME AND DESCRIPTION	NO. OF CYL.	PLYMOUTH	DODGE	DESOTO	CHRYSLER AND IMPERIAL	PER CAR	PART NUMBER
5-102-O POWER BRAKE VACUUM TANK								
5-102-2	TANK, Vacuum, PC1	6-8	60	60	60	60	1	1948 815
	PC2, PC3	8	-	-	-	60	1	1948 822
	PY1	8	-	-	-	60	1	1948 827
5-102-11	NUT, Vacuum Tank Bracket Mounting, PC2, PC3	8	-	-	-	60	2	6000 123
	PC1	6-8	60	60	60	60	2	E2076 232
5-105-O POWER BRAKE VACUUM CHECK VALVE								
5-105-1	VALVE, 3 Way, PC1	6-8	60	60	60	60	1	1944 089

★ Indicates use as required. Numerals in parentheses () refer to notes. Printed in U.S.A.
 □ Indicates parts not listed in any previous parts book. Prices and specifications subject to change without notice.
 * Indicates change or addition. Page 5-13 Dec. 9, 1960 Supersedes April 20, 1960.

