

CONTENTS

General Specifications.....	1
Section I—Suspension.....	4
Section II—Axle—Rear.....	16
Section III—Brakes.....	17
Section IV—Accessory Belt Drives.....	23
Section V—Cooling System.....	26
Section VI—Electrical System.....	27
Section VII—Engine.....	41
Section VIII—Fuel and Exhaust System.....	70
Section IX—Frame.....	74
Section X—Steering.....	76
Section XI—Transmission.....	80
Section XII—Universal Joints and Propeller Shaft.....	83
Section XIII—Wheels and Tires.....	84
Section XIV—Body and Sheet Metal—Town and Country Models.....	85
Section XV—Lubrication.....	88
Section XVI—Radio and Heater.....	88
Section XVII—Heater—Air Conditioning.....	97

SERVICING THE 1959 CHRYSLER AND IMPERIAL

This supplement contains advanced service information on the new 1959 Chrysler and Imperial Models. Only changes and improvements affecting the servicing of the new models are included. If the information desired cannot be found in this supplement the servicing procedures will remain the same as those for corresponding models covered in the 1958 Chrysler and Imperial Service Manual D-16350.

In order to use this supplement to best advantage with the previous Chrysler and Imperial Service Manual D-16350, the corresponding or superseding car models must be understood. The supersedence of these models is as follows:

Chrysler Models:	<u>1958</u>	<u>1959</u>
Windsor	LC-1	MC-1
Saratoga	LC-2	MC-2
New Yorker	LC-3	MC-3
Imperial Models	<u>1958</u>	<u>1959</u>
Custom, Crown, and LeBaron	LY-1	MY-1

The service tools referred to in this manual are available through the Miller Manufacturing Company, 17640 Grand River, Detroit 27, Michigan, U.S.A., unless otherwise specified.

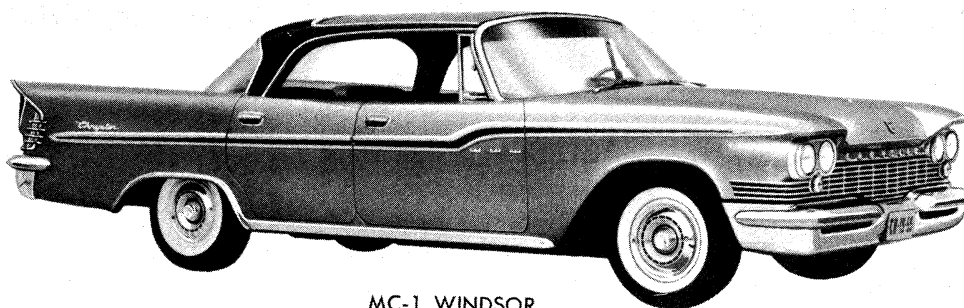
Extra copies of this Supplement are available at \$2.00 each, under part number D-16798. Order from Chrysler Division, P.O. Box 1658, Detroit 31, Michigan.

CHRYSLER DIVISION

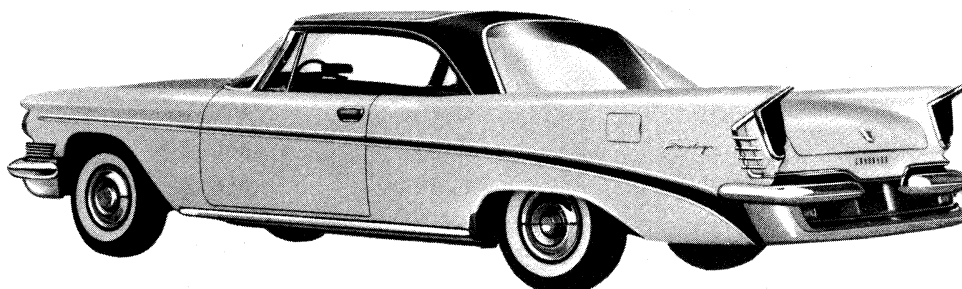
Chrysler Corporation

DETROIT 31, MICHIGAN

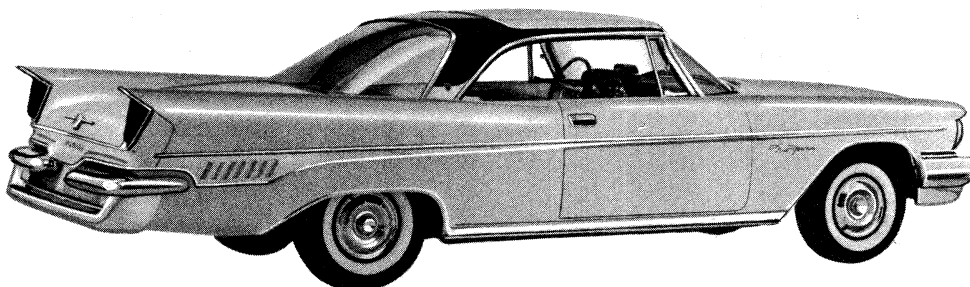
Chrysler Corporation reserves the right to make changes in design or to make additions to or improvements in its product without imposing any obligations upon itself to install them on its products previously manufactured.



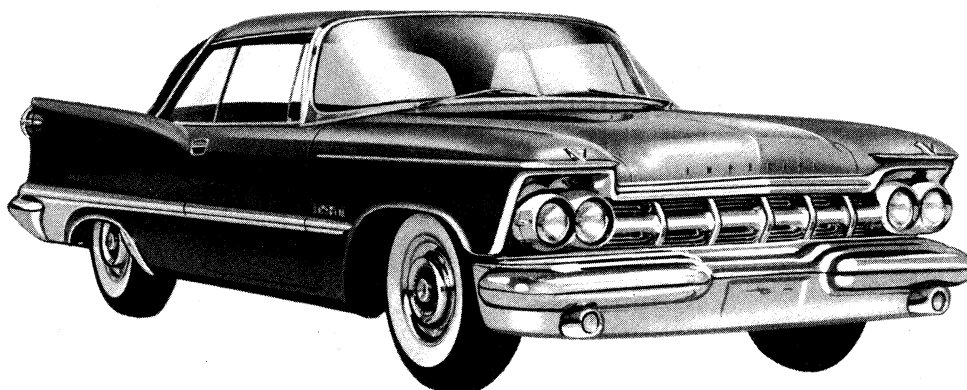
MC-1 WINDSOR



MC-2 SARATOGA



MC-3 NEW YORKER



MY-1 IMPERIAL

GENERAL DATA AND SPECIFICATIONS

Item	Body Style	Starting Vehicle Numbers			1959 Models		
		Detroit	Los Angeles	MC-1	MC-2	MC-3	MY-1
	Four Door Sedan	M511-100,001	M514-100,001	Windsor
	Four Door Sedan	M531-100,001	M534-100,001	Saratoga
	Four Door Sedan	M551-100,001	M554-100,001	New Yorker
	Four Door Sedan	M617-100,001	Imp. Custom
	Four Door Sedan	M637-100,001	Imp. Crown
	Four Door Sedan	M657-100,001	Imp. Lebaron
Wheelbase	Four Door Sedan	122	126	126	129
	Convertible Coupe	122	126	129
	Two Door (hard top)	122	126	126	129
	Town & Country Wagon	122	126
	Four Door (hard top)	122	126	126	129
Tread (Front)	Four Door Sedan	60.9	60.9	61.2	61.8
	Convertible Coupe	60.9	61.2	61.8
	Two Door (hard top)	60.9	60.9	61.2	61.8
	Town & Country Wagon	60.9	61.2
	Four Door (hard top)	60.9	60.9	61.2	61.8
Tread (Rear)	Four Door Sedan	59.8	59.8	60.0	62.4
	Convertible Coupe	59.8	60.0	62.4
	Two Door (hard top)	59.8	59.8	60.0	62.4
	Town & Country Wagon	59.8	60.0
	Four Door (hard top)	59.8	59.8	60.0	62.4
Length with Bumper	Four Door Sedan	216.6	220.6	220.9	226.3
	Convertible Coupe	216.6	220.9	226.3
	Two Door (hard top)	216.6	220.6	220.9	226.3
	Town & Country Wagon	215.9	220.1
	Four Door (hard top)	216.6	220.6	220.9	226.3
Width with Bumper	Four Door Sedan	79.3	79.3	79.5	81.0
	Convertible Coupe	79.3	79.5	81.0
	Two Door (hard top)	79.3	79.3	79.5	81.0
	Town & Country Wagon	79.3	79.5
	Four Door (hard top)	79.3	79.3	79.5	81.0
Rear Axle with Torque-	Four Door Sedan	2.93	2.93	2.93	2.93
	Convertible Coupe	2.93	2.93	2.93
Flite Trans.	Two Door (hard top)	2.93	2.93	2.93	2.93
	Town & Country Wagon	2.93	2.93
	Four Door (hard top)	2.93	2.93	2.93	2.93
Tire Size	Four Door Sedan	8.00x14	8.50x24	9.00x14	9.50x14
	Convertible Coupe	8.00x14	9.00x14	9.50x14
	Two Door (hard top)	8.00x14	8.50x14	9.00x14	9.50x14
	Town & Country Wagon	8.50x14	9.00x14
	Four Door (hard top)	8.00x14	8.50x14	9.00x14	9.50x14