

# 1957 CHRYSLER SERVICE MANUAL

## MODELS

C-75-1 (WINDSOR) C-75-2 (SARATOGA)

C-76 (NEW YORKER) IM-1-2-4 (IMPERIAL)

This Manual is compiled as a reference and guide to provide Chrysler service men with proper adjustment and repair procedures for servicing the 1957 Chrysler Cars.

An understanding of the material compiled herein, and in the supplementary service bulletins, will assist the service personnel to maintain the quality standards built in Chrysler Cars.

In order to use this Manual to best advantage the corresponding or superseding car models must be understood. The supersedence of these models is as follows:

	1955	1956	1957
Windsor .....	C-67	C-71	C-75-1
Saratoga .....	—	—	C-75-2
New Yorker .....	C-68	C-72	C-76
Imperial .....	C-69	C-73	IM-1-2-4
Crown Imperial .....	C-70	C-70	—

The service tools referred to in this Manual are available through the Miller Manufacturing Company, 5919 Tireman Avenue, Detroit, Michigan, U.S.A., unless otherwise specified.

Extra copies of this Manual are available at \$4.00 each, under Part Number D-15899. Order from Chrysler Division, P. O. Box 1658, Detroit 31, Michigan.

## CHRYSLER DIVISION

*Chrysler Corporation*

**DETROIT 31, MICHIGAN**

Chrysler Corporation reserves the right to make changes in design or to make additions to or improvements in its product without imposing any obligation upon itself to install them on its products previously manufactured.

SECTION	Page
<b>Introduction and General Specifications</b>	<b>1</b>
<b>Section I Front Wheel Suspension</b>	<b>7</b>
<b>Section II Axle — Rear</b>	<b>24</b>
<b>Section III Brakes</b>	<b>47</b>
<b>Section IV Clutch</b>	<b>70</b>
<b>Section V Cooling System</b>	<b>79</b>
<b>Section VI Electrical System</b>	<b>86</b>
<b>Section VII Engine</b>	<b>129</b>
<b>Section VIII Fuel and Exhaust Systems</b>	<b>159</b>
<b>Section IX Frame, Springs and Shock Absorbers</b>	<b>197</b>
<b>Section X Steering</b>	<b>206</b>
<b>Section XI Transmission</b>	<b>246</b>
<b>Section XII Universal Joints and Propeller Shaft</b>	<b>339</b>
<b>Section XIII Wheels and Tires</b>	<b>348</b>
<b>Section XIV Body and Sheet Metal — Town and Country Wagon</b>	<b>356</b>
<b>Section XV Lubrication</b>	<b>404</b>
<b>Section XVI Radio, Hi-Fi and Heater</b>	<b>410</b>
<b>Section XVII Air Conditioning</b>	<b>429</b>

## FACTORY CONTACT

The following outline of the proper procedure to use in contacting the factory for assistance or advice on any matter applying to Service will insure your inquiries receiving prompt attention and handling. Make certain those members of your organization who might have the occasion to contact the factory, are thoroughly familiar with this procedure.

Do not withhold action on any matter pending contact by a Factory Service Representative as his scheduled contact may be delayed by special assignments. When in doubt as to the proper procedure to follow in the handling of a claim or complaint, prompt results can be obtained through a letter, telegram or phone call to the proper Factory Service Department—making certain to include the necessary information. If the aid of a Service Representative is necessary, the Factory Division involved will arrange for his contact as promptly as circumstances permit.

### CHRYSLER DIVISION

All correspondence, telegrams, or phone calls, pertaining to Chrysler Cars, EXCEPT THOSE COVERING PARTS ORDERS, as well as orders or requests for Chrysler Service Bulletins, Owners Manuals, Shop Manuals, Time Schedule Manuals or other Chrysler Service literature, should be addressed to:

<b>(Letters)</b>	<b>(Telegrams)</b>
Chrysler Corporation	Chrysler Division
Chrysler Division	Attention,
Service Department	(Name of person to whom sent)
P. O. Box #1658	WUX
Detroit 31, Michigan	Detroit 31, Michigan

**(Phone) VALley 2-4700**

**NOTE:** Please make certain to include the code WUX on all telegrams to either the Chrysler Division or Plymouth Division as this insures delivery direct to our Teleprinter Room thus eliminating delay.

Letters or telegrams should be confined to one subject only and should include the following information:

Car Serial Number	Owner's Name
Date of Sale	Mileage

Complete description of difficulty, corrective action taken, your recommendations as to what should be done and the reason for so doing.

Include Paint and Trim Code Numbers where finish, upholstery, body or sheet metal is involved, and estimate of net cost of repairs.

### PLYMOUTH DIVISION

All correspondence, telegrams, or phone calls, pertaining in any way to Plymouth cars, as well as orders or requests for Plymouth Service Bulletins, Owner Manuals, Time Schedule Manuals or other Plymouth Service literature, should be addressed to:

<b>(Letters)</b>	<b>(Telegrams)</b>
Chrysler Corporation	Plymouth Division
Plymouth Division	Attention,
Service Department	(Name of person to whom sent)
P. O. Box #1518	WUX
Detroit 31, Michigan	Detroit 31, Michigan

**(Phone) WALnut 1-8240**

### MASTER TECHNICIANS SERVICE CONFERENCE

All correspondence concerning enrollment in the M.T.S.C. Program, changes in enrollment records (the adding or dropping of personnel), issuance of awards, status of enrolled personnel, orders for additional material, the return of questionnaires, or any other matters relating to this program should be addressed to:

Master Technicians Service Conference  
Chrysler Corporation  
Plymouth Division  
P. O. Box #1518  
Detroit 31, Michigan

## PARTS DIVISION

### General

*ALL* orders for parts or accessories, emergency or otherwise, should be forwarded direct to your usual source of supply or to the parts plant listed below serving the area in which you are located.

To insure your receiving the parts required by you more promptly, close attention should be given to the procedure listed under "Ordering Information" and "Your Parts Orders" in the introductory front pages of all MoPar Parts Lists. Particularly where parts are ordered for a specific car, it is very essential that your order include the car serial and engine numbers, and, in the case of body parts, the body number.

#### ATLANTA

Chrysler Corp., Parts Division  
Station A, P.O. Box 206  
Atlanta, Georgia  
Phone—Plaza 5-2531

#### DELAWARE

Chrysler Corp., Parts Division  
South College Avenue  
Newark, Delaware  
Phone—Newark 2521

#### KANSAS CITY

Chrysler Corp., Parts Division  
Chrysler and Funston Roads  
Kansas City 15, Kansas  
Phone—Fairfax 3300

#### PACIFIC COAST

Chrysler Corp., Parts Division  
1950 Davis Street  
San Leandro, California  
Phone—Sweetwood 8-6200

### Centerline

Chrysler Corp., Parts Division  
P.O. Box 779  
Detroit 31, Michigan  
Phone—Jefferson 9-3000

### Parts Division Literature

Requests for Parts Division literature such as Parts Books, Parts Price Lists, Parts Bulletins, etc., should be forwarded direct to:

Chrysler Corporation, Parts Division  
P. O. Box 1718  
Detroit 31, Michigan  
Attention: Parts Advertising Department

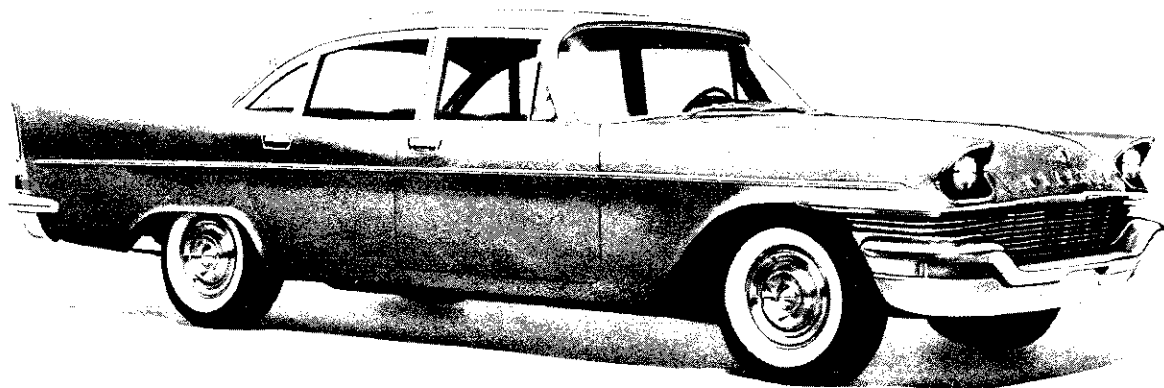
### Shortage of Accessories or Other Equipment on New Cars

Before placing an order for missing accessories, other parts or equipment, on new cars received, examine the vehicle for the presence of a "back order" notice, which if present, will be found attached to the bracket for the inside rear view mirror. Such back-ordered short items will be shipped from the assembly plant as soon as stock is available, and should not be ordered from the Parts Division.

### Emergency Orders

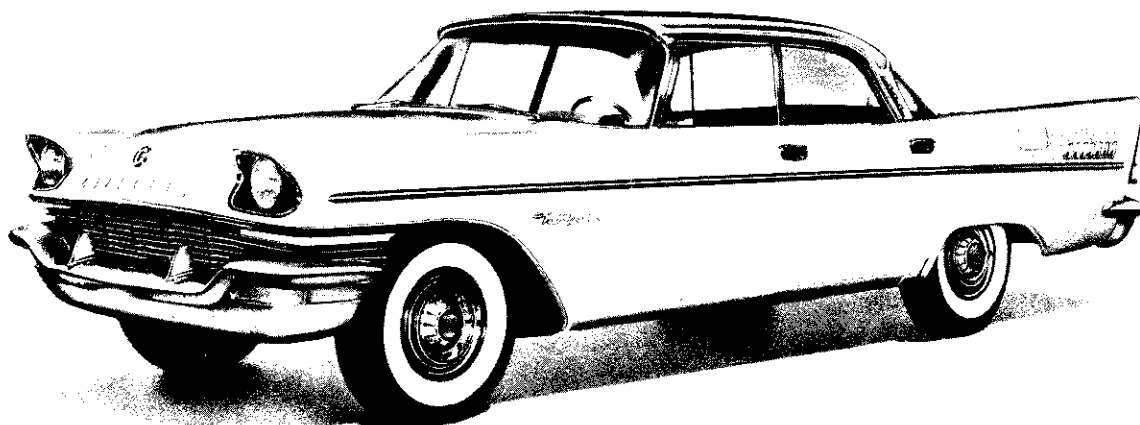
Where a part required for an "Emergency" is not readily available from your usual parts source, an order plainly marked "Emergency Order" and including complete details on the need for the material, should be placed with the above parts plant serving the area in which you are located. Orders so marked and which are, in the opinion of the Parts Division, for a bona fide immediate emergency need, will receive emergency handling. Emergency orders *should not* be forwarded to the Division Service Department.

Should the occasion arise that the part required is not available at the plant ordered from, you will be notified that the part is on back-order. In the meantime, your order will continue to receive emergency handling by the Parts Division with shipment being made as promptly as it is available.



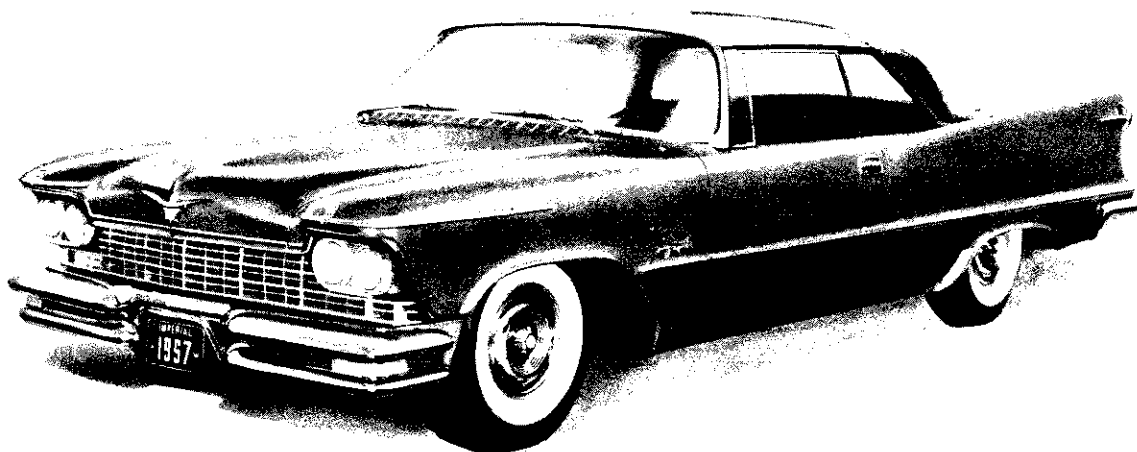
57x128

Fig. 1 — Model C-75-1 Windsor



57x129

Fig. 2 — Model C-76 New Yorker



57x130

Fig. 3 — Model Imperial

## LICENSE DATA

The following revised method of numbering vehicles and their engines made in Detroit and Los Angeles production Plants will be used on the 1957 Models.

This revision will provide the Sales Department with the information desired as to model, year built and the serial number.

For Detroit built cars, the vehicle number will be revised as follows:

Windsor	W571001
Saratoga	L571001
New Yorker	N571001
Imperial	C571001

Model	_____	└──┬──┘
Year Built	_____	└──┬──┘
Serial Number	_____	└──┬──┘

For L. A. built cars, the vehicle will be revised as follows:

Windsor	W57L1001
Saratoga	L57L1001
New Yorker	N57L1001

L. A. Identification	_____	└──┬──┘
----------------------	-------	---------

The Engine number will be revised as follows:

Windsor	WE571001
Saratoga	LE571001
New Yorker	NE571001
Imperial	CE571001

Model	_____	└──┬──┘
Denotes Engine	_____	└──┬──┘
Year Built	_____	└──┬──┘
Serial Number	_____	└──┬──┘

## VEHICLE NUMBER

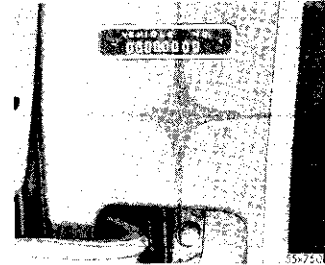


Fig. 4 — Vehicle Number

The vehicle number is stamped on a metal plate attached to the left front door body hinge post, as shown in Figure 4.

## ENGINE NUMBER

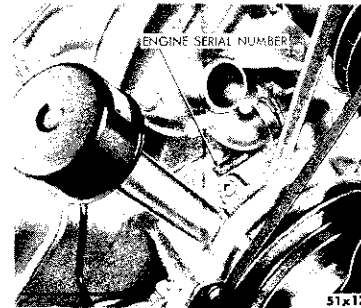


Fig. 5 — Engine Number

The engine number is stamped on a boss on the top side of the cylinder block just back of the water pump, as shown in Figure 5.

## BODY NUMBER

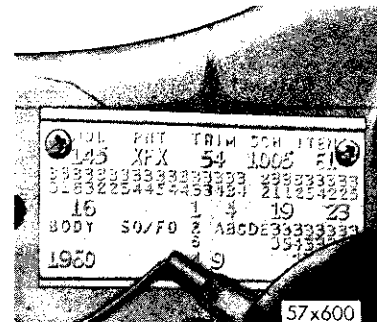


Fig. 6 — Body Number

The body number is stamped on a metal plate attached to the top side of the yoke, as shown in Figure 6.

## GENERAL DATA AND SPECIFICATIONS

Item	Body Style	Starting Vehicle Numbers			1957 Models		
		Detroit	Los Angeles	C-75-1	C-75-2	C-76	IM-1, 2 & 4
Wheelbase	Four Door Sedan	W571001	W57L1001	Windsor	.....	.....	.....
	Four Door Sedan	L571001	L57L1001	.....	Saratoga	.....	.....
	Four Door Sedan	N571001	N57L1001	.....	.....	New Yorker	.....
	Four Door Sedan	C571001	.....	.....	.....	.....	Imperial
	Four Door Sedan	.....	.....	126	126	126	129
	Convertible Coupe	.....	.....	.....	.....	126	129
	Two Door (hard top)	.....	.....	126	126	126	129
	Town & Country Wagon	.....	.....	126	.....	126	.....
	Four Door (hard top)	.....	.....	126	126	126	129
Tread (Front)	Four Door Sedan	.....	.....	61.0	61.0	61.2	61.9
	Convertible Coupe	.....	.....	.....	.....	61.2	61.9
	Two Door (hard top)	.....	.....	61.0	61.0	61.2	61.9
	Town & Country Wagon	.....	.....	61.0	.....	61.2	.....
	Four Door (hard top)	.....	.....	61.0	61.0	61.2	61.9
Tread (Rear)	Four Door Sedan	.....	.....	59.7	59.7	60.0	62.4
	Convertible Coupe	.....	.....	.....	.....	60.0	62.4
	Two Door (hard top)	.....	.....	59.7	59.7	60.0	62.4
	Town & Country Wagon	.....	.....	59.7	.....	60.0	.....
	Four Door (hard top)	.....	.....	59.7	59.7	60.0	62.4
Length with Bumper	Four Door Sedan	.....	.....	219.2	219.2	219.2	224.2
	Convertible Coupe	.....	.....	.....	.....	219.2	224.2
	Two Door (hard top)	.....	.....	219.2	219.2	219.2	224.2
	Town & Country Wagon	.....	.....	218.9	.....	218.9	224.2
	Four Door (hard top)	.....	.....	219.2	219.2	219.2	224.2
Width with Bumper	Four Door Sedan	.....	.....	78.8	78.8	78.8	81.2
	Convertible Coupe	.....	.....	.....	.....	78.8	81.2
	Two Door (hard top)	.....	.....	78.8	78.8	78.8	81.2
	Town & Country Wagon	.....	.....	78.8	.....	78.8	.....
	Four Door (hard top)	.....	.....	78.8	78.8	78.8	81.2
Rear Axle with Manual Transmission	Four Door Sedan	.....	.....	3.73	.....	.....	.....
	Convertible Coupe	.....	.....	.....	.....	.....	.....
	Two Door (hard top)	.....	.....	3.73	.....	.....	.....
	Town & Country Wagon	.....	.....	3.73	.....	.....	.....
	Four Door (hard top)	.....	.....	3.73	.....	.....	.....
Rear Axle with Torque-Flite Trans.	Four Door Sedan	.....	.....	3.18	3.18	3.18*	3.18*
	Convertible Coupe	.....	.....	.....	.....	3.18*	3.18*
	Two Door (hard top)	.....	.....	3.18	3.18	3.18*	3.18*
	Town & Country Wagon	.....	.....	3.36	.....	3.36	.....
	Four Door (hard top)	.....	.....	3.18	3.18	3.18*	3.18*
Tire Size	Four Door Sedan	.....	.....	8.50x14	8.50x14	9.00x14	9.50x14
	Convertible Coupe	.....	.....	.....	.....	9.00x14	9.50x14
	Two Door (hard top)	.....	.....	8.50x14	8.50x14	9.00x14	9.50x14
	Town & Country Wagon	.....	.....	8.50x14	.....	9.00x14	.....
	Four Door (hard top)	.....	.....	8.50x14	8.50x14	9.00x14	9.50x14

\*2.92 in Flat Areas of U.S.

\*\*IM-1 No Convertible Model      \*\*IM-4 Four Door Sedan Only

## Shipping Weight (Four Door Sedans)

C-75-1 4360 Pounds Including Standard 3-Speed Transmission Only!

C-75-2 4400 Pounds Including Power Steering and Automatic Transmission.

C-76 4550 Pounds Including Power Steering and Automatic Transmission.

IM-1 4925 Pounds Including Power Steering and Automatic Transmission.