

CHRYSLER SERVICE MANUAL MODELS

C-71 (WINDSOR) C-72 (NEW YORKER),
C-73 (CUSTOM IMPERIAL),
C-70 (CROWN IMPERIAL) AND
C-300B (CHRYSLER)

This Manual is compiled as a reference and guide to provide Chrysler service men with proper adjustment and repair procedures for servicing the 1956 Chrysler Cars.

An understanding of the material compiled herein, and in the supplementary service bulletins, will assist the service personnel to maintain the quality standards built in Chrysler Cars.

In order to use this Manual to best advantage the corresponding or superseding car models must be understood. The supersedence of these models is as follows:

	1954	1955	1956
Windsor	C-62 (6-Cyl.)	C-67 (8-Cyl.)	C-71 (8-Cyl.)
New Yorker . . .	C-63 (8-Cyl.)	C-68 (8-Cyl.)	C-72 (8-Cyl.)
Custom Imp. . . .	C-64 (8-Cyl.)	C-69 (8-Cyl.)	C-73 (8-Cyl.)
Crown Imperial .	C-66 (8-Cyl.)	C-70 (8-Cyl.)	C-70 (8-Cyl.)
Chrysler-300	C-300 (8-Cyl.)	C-300B (8-Cyl.)	

The service tools referred to in this Manual are available through the Miller Manufacturing Company, 5919 Tireman Avenue, Detroit, Michigan, U.S.A., unless otherwise specified.

Extra copies of this Manual are available at \$4.00 each, under Part Number D-15724. Order from Chrysler Division, Detroit 31, Michigan.

CHRYSLER DIVISION
Chrysler Corporation
DETROIT 31, MICHIGAN

Chrysler Corporation reserves the right to make changes in design or to make additions to or improvements in its product without imposing any obligation upon itself to install them on its products previously manufactured.

SECTION	Page
Introduction and General Specifications	1
Section I Front Wheel Suspension	5
Section II Axle - Rear	15
Section III Brakes	44
Section IV Clutch	73
Section V Cooling System	82
Section VI Electrical System	89
Section VII Engine	141
Section VIII Fuel and Exhaust Systems	176
Section IX Frame, Springs and Shock Absorbers	220
Section X Steering	229
Section XI Transmission	273
Section XII Universal Joints and Propeller Shaft	333
Section XIII Wheels and Tires	344
Section XIV Body and Sheet Metal - Town and Country Wagon	356
Section XV Lubrication	403
Section XVI Radio, Hi-Fi and Heater	409
Section XVII Air Conditioning	430
Section XVIII Chrysler C-300B	458

LICENSE DATA

The following revised method of numbering vehicles and their engines made in Detroit and Los Angeles production Plants will be used on the 1956 Models.

This revision will provide the Sales Department with the information desired as to model, year built and the serial number.

For Detroit built cars the vehicle number will be revised as follows:

Windsor	W561001
New Yorker	N561001
Imperial and Crown Imperial	C561001
Chrysler C-300B	3N561001

Model	_____	_____	_____	_____
Year Built	_____	_____	_____	_____
Serial Number	_____	_____	_____	_____

For L. A. built cars the vehicle number will be revised as follows:

Windsor	W56L1001
New Yorker	N56L1001

L. A. Identification	_____	_____
----------------------	-------	-------

The Engine number will be revised as follows:

Windsor	WE561001
New Yorker	NE561001
Imperial and Crown Imperial	CE561001
Chrysler C-300B	3NE561001

Model	_____	_____	_____	_____
Denotes Engine	_____	_____	_____	_____
Year Built	_____	_____	_____	_____
Serial Number	_____	_____	_____	_____

VEHICLE NUMBER

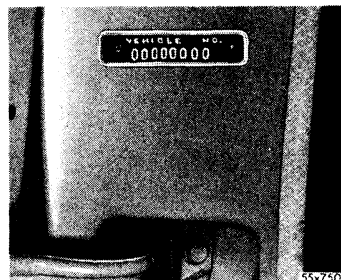


Fig. 1—Vehicle Number

The vehicle number is stamped on a metal plate attached to the left front door body hinge post, as shown in Figure 1.

ENGINE NUMBER

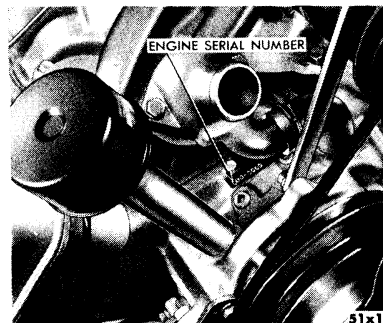


Fig. 2—Engine Number

The engine number is stamped on a boss on the top front side of the cylinder block just back of the water pump, as shown in Figure 2.

BODY NUMBER

The body number is stamped on a metal plate attached to the top left side of the splash shield, in front of the radiator.

CORRESPONDENCE

We appreciate correspondence from our dealers on all product information. To assure prompt and accurate processing of correspondence, the factory must have detailed information to be routed to the proper authorities. Therefore, to expedite the handling of correspondence at the factory, it is suggested that the following rules be observed:

- Begin all letters relative to service with the Car Owner's Full Name, the Vehicle Number, the Date of Delivery, the Speedometer Reading and the Body Number, if the finish of the car is involved. All this information is very important in identifying the particular car.
- Describe the problem briefly, and accurately, supplying all needed details.
- Do not include problems on more than one car in the same letter (unless they are identical).

PROPER CARE OF NEW ENGINES

The Chrysler passenger car engine is designed and manufactured to high quality standards. Like other fine mechanisms, the Chrysler engine, requires proper "breaking-in", servicing and maintenance, in order to assure the car owner long-lasting, satisfactory operation.

To assure proper lubrication of the moving parts of the engine, a new car should be driven at moderate speeds, until the engine has become thoroughly warmed. In order for the driver to become "acquainted" with the controls and action of the car, a new car should be driven at moderate speeds during the first few hundred miles. Urge the owner to avoid driving his vehicle at sustained high speeds during the early life of the car.

During the first 1,000 miles of operation, the original factory oil should be retained in the crankcase. If it becomes necessary to add oil during the break-in period, use the proper viscosity oil according to the atmospheric temperatures as follow:

If the temperature is not lower than 32° F. use SAE 30, downward to 10° F., above zero use SAE 20-W, and as low as 10° F., below zero use 10-W, and lower than 10° F., below zero use SAE 5-W.

STARTING A COLD ENGINE

When starting a cold engine, (whether new or not), exercise care during the warm-up period not to accelerate the engine unnecessarily. Drive the car at moderate speeds, until the engine reaches normal operating temperatures, as this will assure proper lubrication of the engine parts.

GENERAL DATA AND SPECIFICATIONS

Item	Body Style	Starting Vehicle Numbers			1956 Models			
		Detroit	Los Angeles	C-71	C-72	C-73	C-70	
	Four Door Sedan	W561001	W56L1001	Windsor Deluxe	
	Four Door Sedan	N561001	W56L1001	New Yorker Deluxe	
	Four Door Sedan	C561001	Imperial	
	8 Passenger Sedan	Crown Imperial	
Wheel Base (Inches)	Four Door Sedan	126	126	133	
	Convertible Coupe	126	126	
	Special Four Door (Hard Top)	126	126	133	
	Newport (Hard Top)	126	126	133	
	St. Regis (Hard Top)	126	126	
	Town & Country Wagon	126	126	
	8 Passenger Sedan and Limousine	149.5
Tread (Front Inches)	Four Door Sedan	60.4	60.4	61.3	
	Convertible Coupe	60.4	60.4	
	Special Four Door (Hard Top)	60.4	60.4	61.3	
	Newport (Hard Top)	60.4	60.4	61.3	
	St. Regis (Hard Top)	60.4	
	Town & Country Wagon	61.3	61.3	
	8 Passenger Sedan and Limousine	61.3
Tread (Rear Inches)	Four Door Sedan	59.6	59.6	60.4	
	Convertible Coupe	59.6	59.6	
	Special Four Door (Hard Top)	59.6	59.6	60.4	
	Newport (Hard Top)	59.6	59.6	60.4	
	St. Regis (Hard Top)	59.6	
	Town & Country Wagon	60.4	60.4	
	8 Passenger Sedan and Limousine	60.8
Length with Bumper	Four Door Sedan	219.9	221.2	229.6	
	Convertible Coupe	222.9	224.2	
	Special Four Door (Hard Top)	219.9	221.2	229.6	
	Newport (Hard Top)	222.9	224.2	229.6	
	St. Regis (Hard Top)	224.2	
	Town & Country Wagon	219.0	220.3	
	8 Passenger Sedan and Limousine	243.6
Width with Bumper	Four Door Sedan	78.8	81.0	78.8	
	Convertible Coupe	78.8	81.0	
	Special Four Door (Hard Top)	78.8	81.0	78.8	
	Newport (Hard Top)	78.8	81.0	78.8	
	St. Regis (Hard Top)	81.0	
	Town & Country Wagon	79.1	81.0	
	8 Passenger Sedan and Limousine	79.1
Rear Axle Ratio with 3-Speed Transmission	Four Door Sedan	3.73	
	Convertible Coupe	3.73	
	Special Four Door (Hard Top)	3.73	
	Newport (Hard Top)	3.73	
	St. Regis (Hard Top)	
Town & Country Wagon	3.73		
Rear Axle Ratio with PowerFlite	Four Door Sedan	3.54	*3.07-3.36	3.36	
	Convertible Coupe	3.54	*3.07-3.36	
	Special Four Door (Hard Top)	3.54	*3.07-3.36	3.36	
	Newport (Hard Top)	3.54	*3.07-3.36	3.36	
	St. Regis (Hard Top)	*3.07-3.36	
	Town & Country Wagon	3.73	3.54	
	8 Passenger Sedan and Limousine	3.54
Tire Size	Four Door Sedan	7.60x15	8.00x15	8.20x15	
	Convertible Coupe	7.60x15	8.00x15	
	Special Four Door (Hard Top)	7.60x15	8.00x15	
	Newport (Hard Top)	7.60x15	8.00x15	8.20x15	
	St. Regis (Hard Top)	8.00x15	
	Town & Country Wagon	7.60x15	8.00x15	
	8 Passenger Sedan and Limousine	8.20x15

*3.07 In some regions with flat terrain.