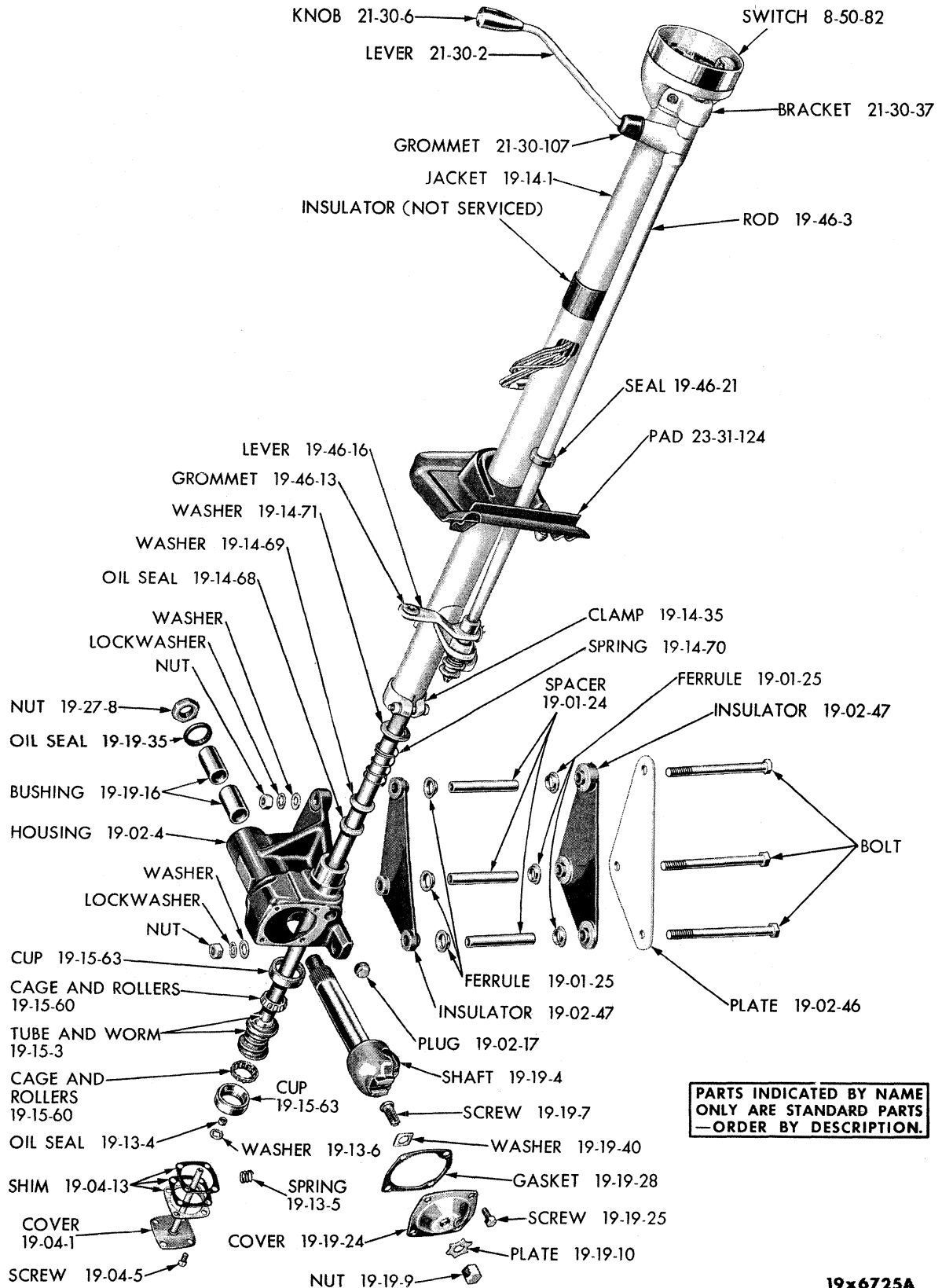


GROUP 19 - STEERING



PARTS INDICATED BY NAME ONLY ARE STANDARD PARTS - ORDER BY DESCRIPTION.

19x6725A

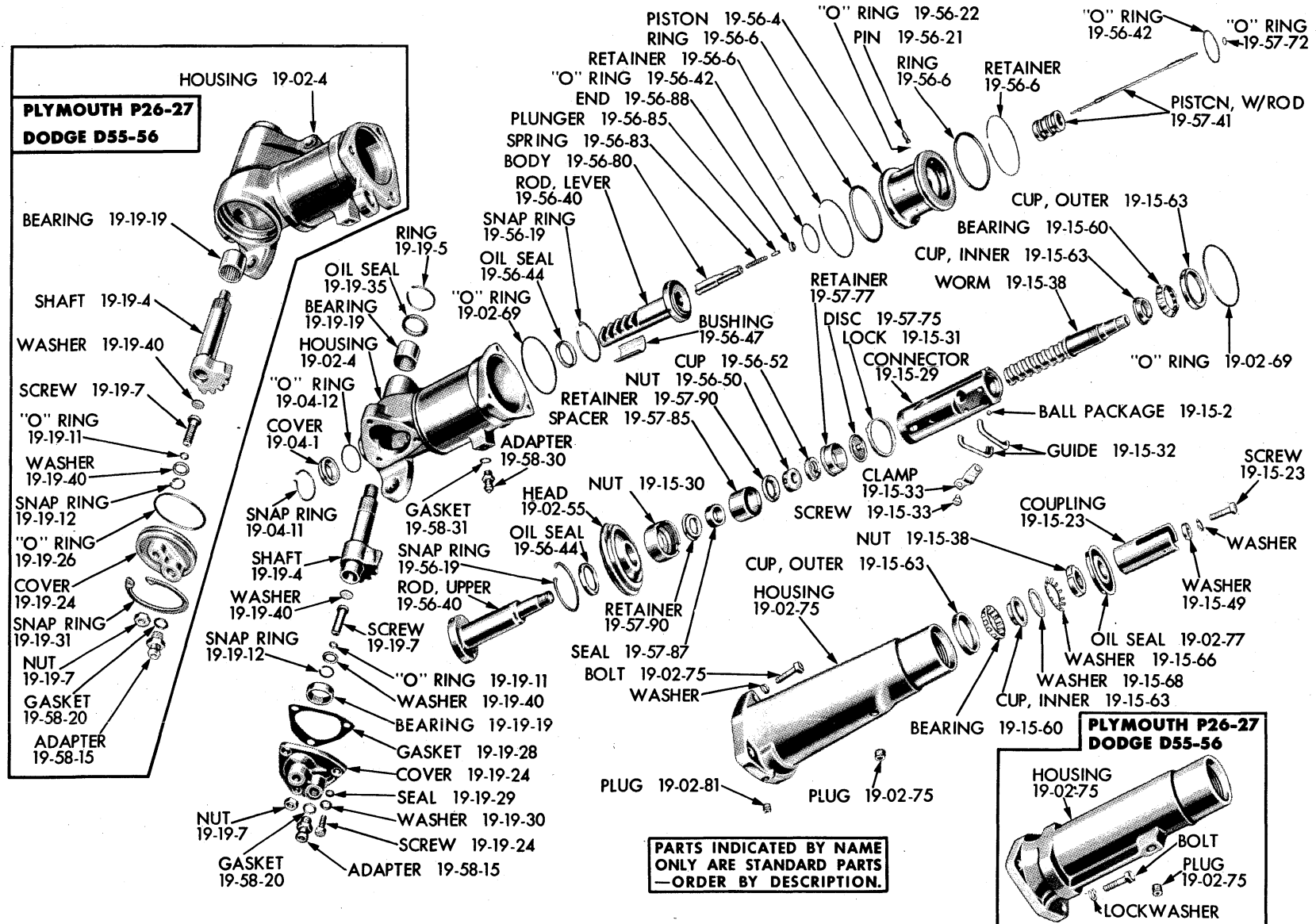
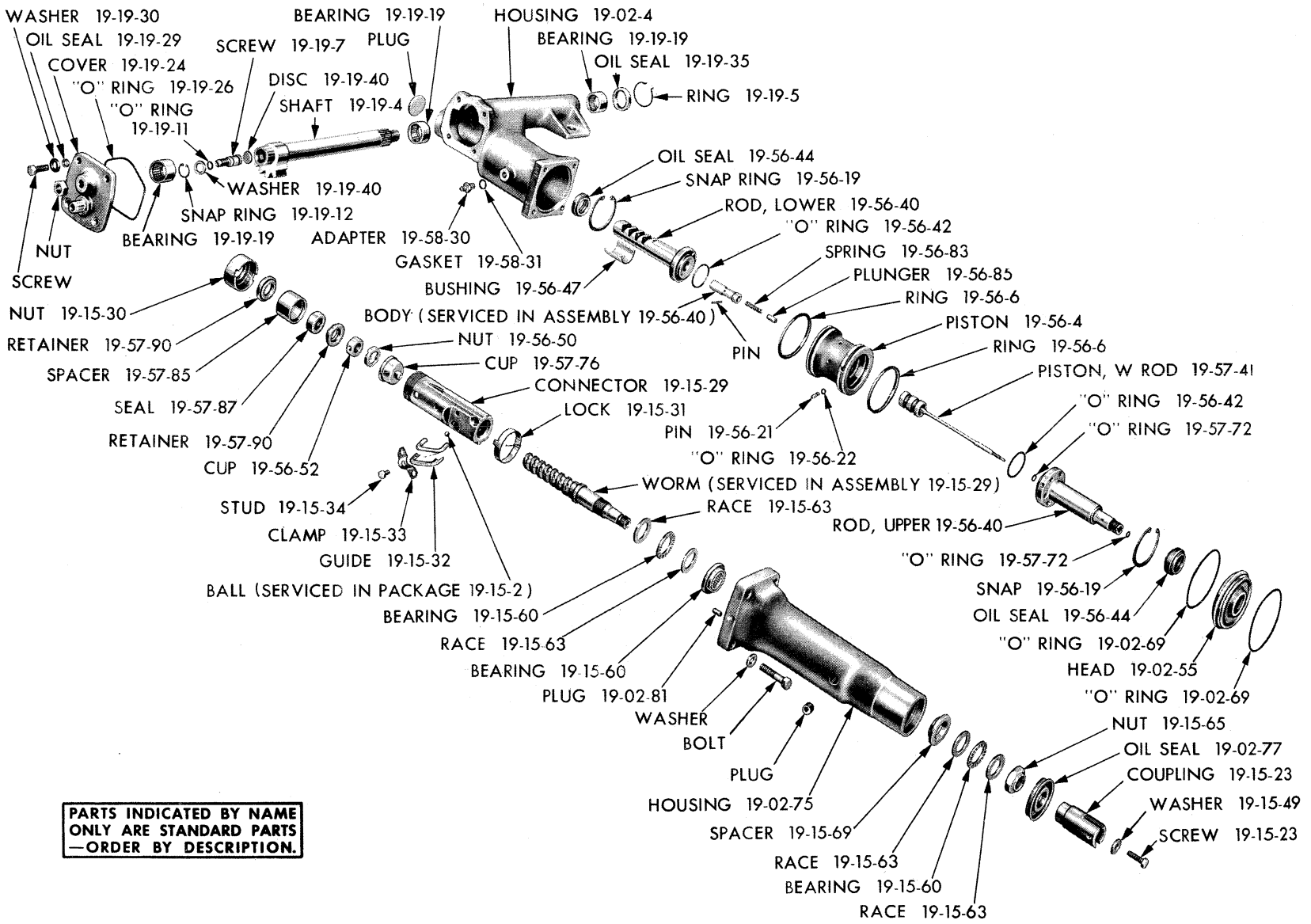


Plate 19-2

POWER STEERING (1955-56 MODELS - COAXIAL TYPE)

19x6783A

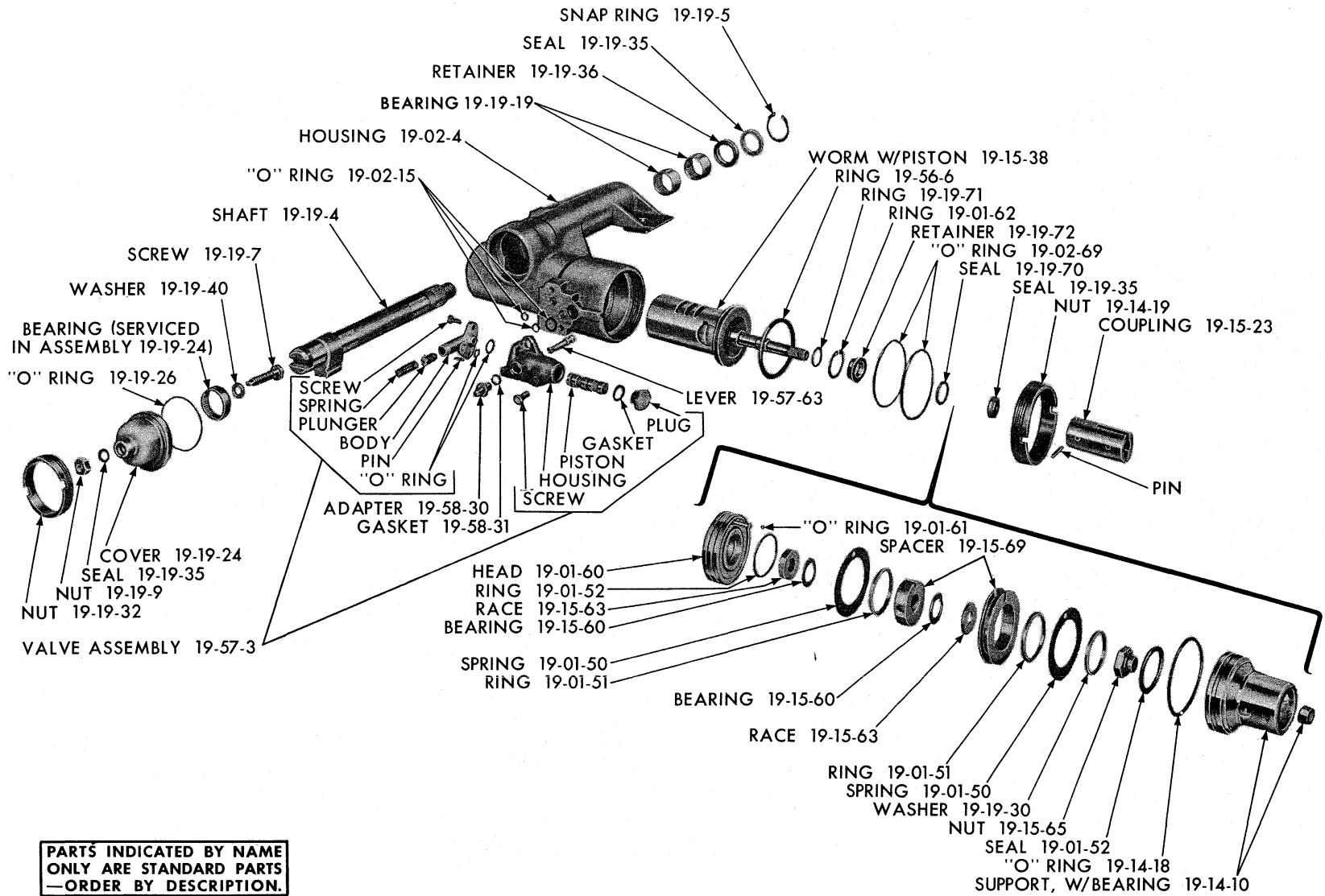


PARTS INDICATED BY NAME
ONLY ARE STANDARD PARTS
—ORDER BY DESCRIPTION.

19x8033

Plate 19-3

POWER STEERING (1957-58 MODELS - COAXIAL TYPE)

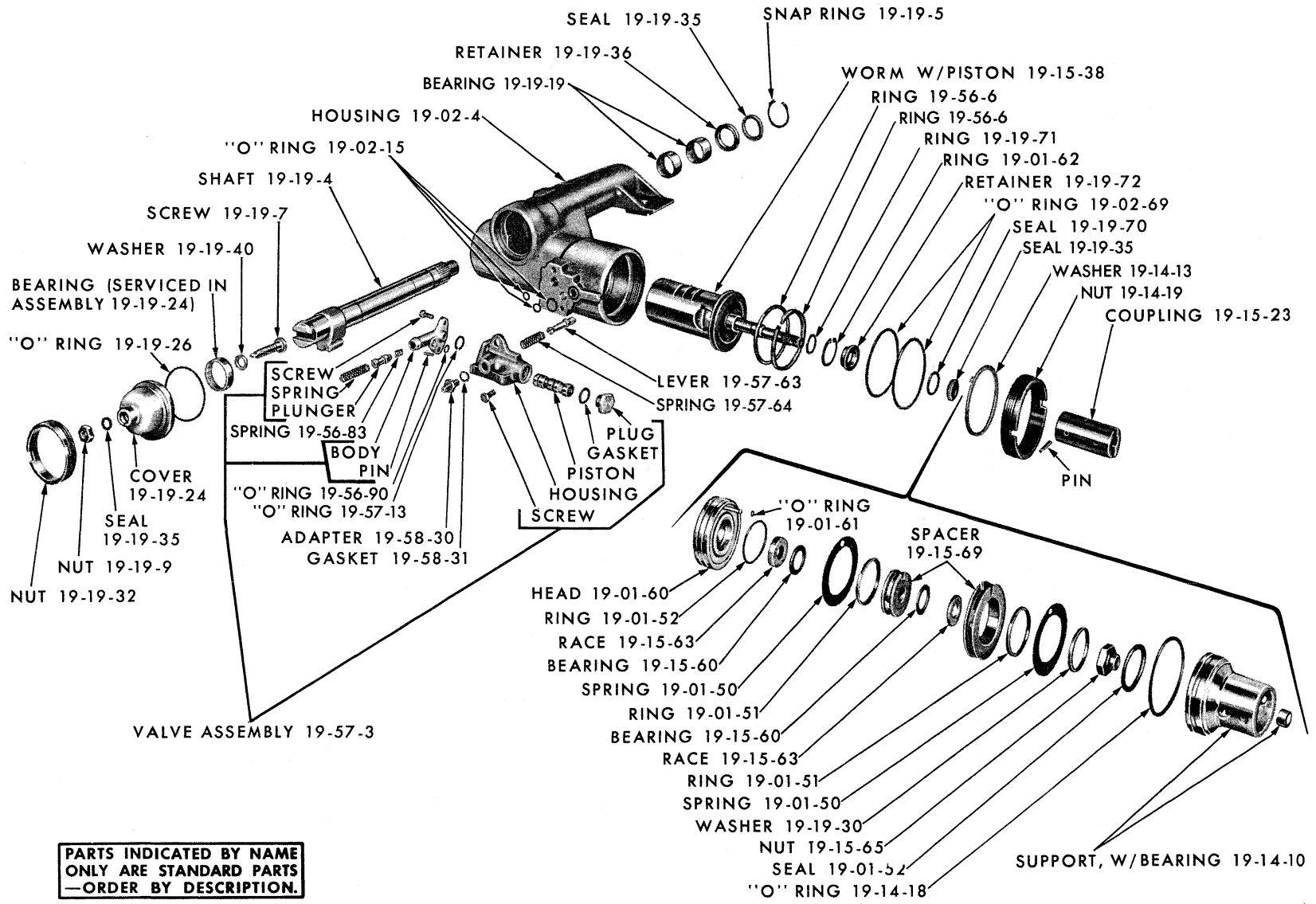


PARTS INDICATED BY NAME ONLY ARE STANDARD PARTS — ORDER BY DESCRIPTION.

19x8242A

Plate 19-4

POWER STEERING - CONSTANT CONTROL TYPE (1958 "UP-TO" MODELS)



PARTS INDICATED BY NAME ONLY ARE STANDARD PARTS — ORDER BY DESCRIPTION.

19x8420A

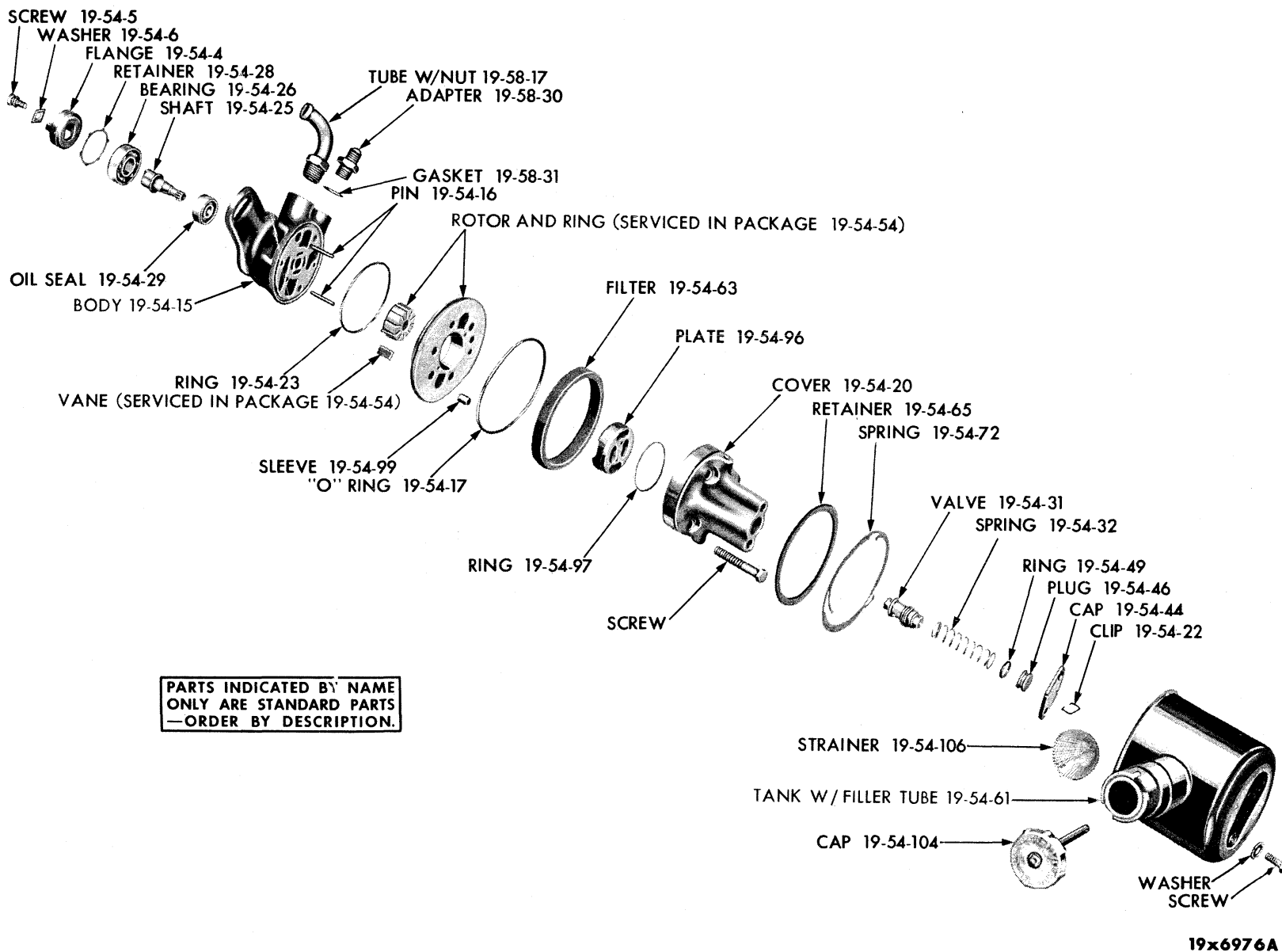
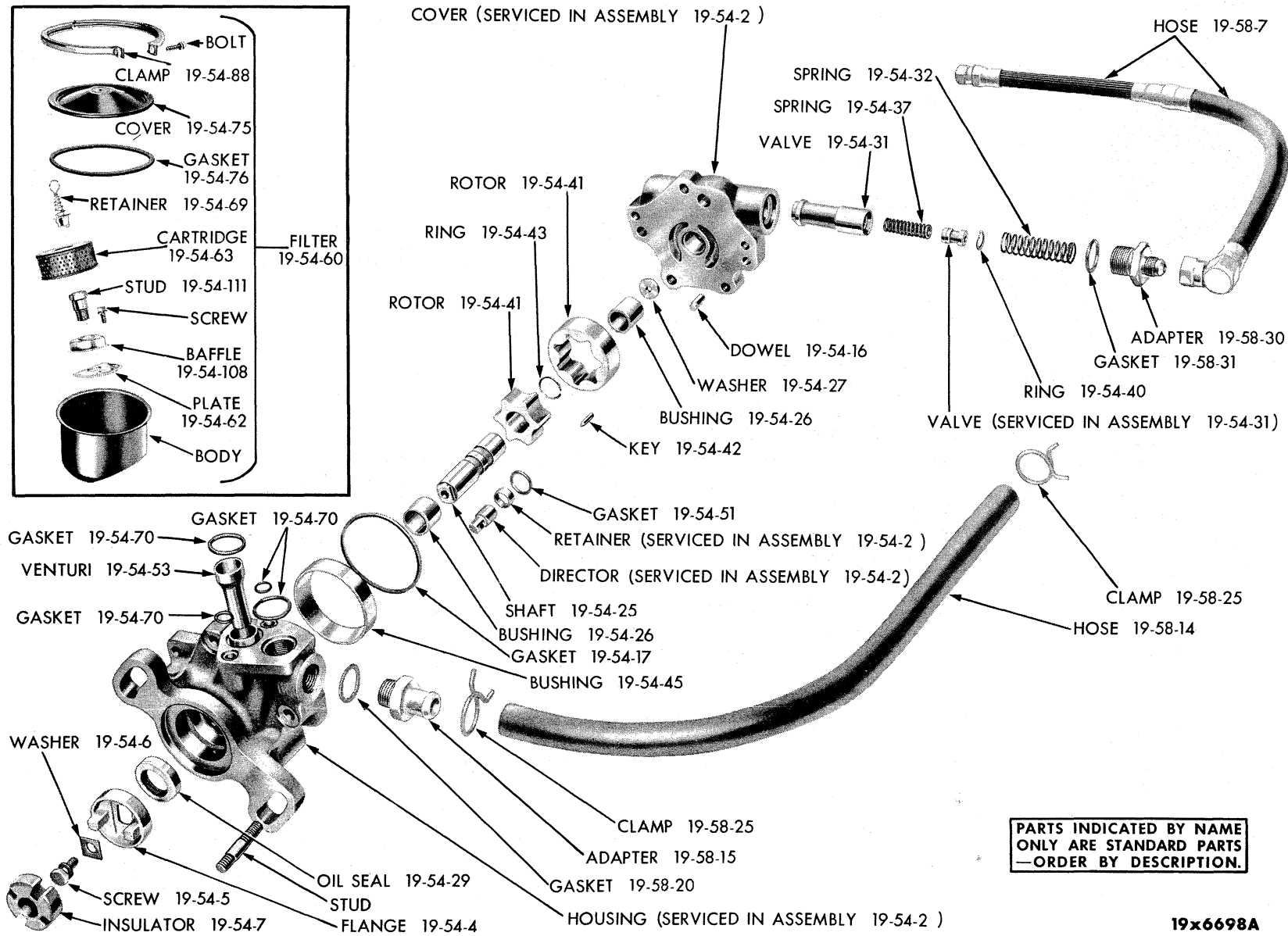
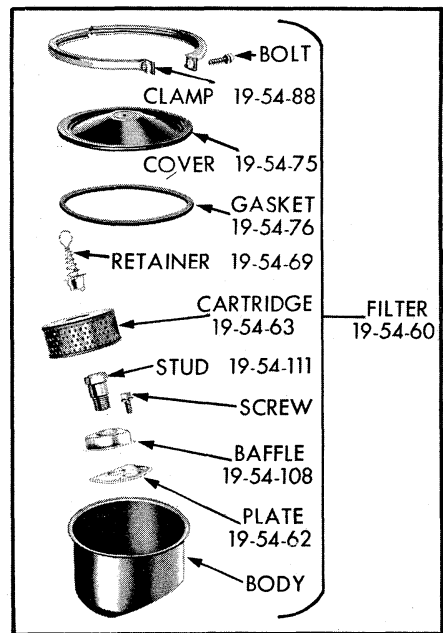


Plate 19-5

POWER STEERING PUMP (1639 666)



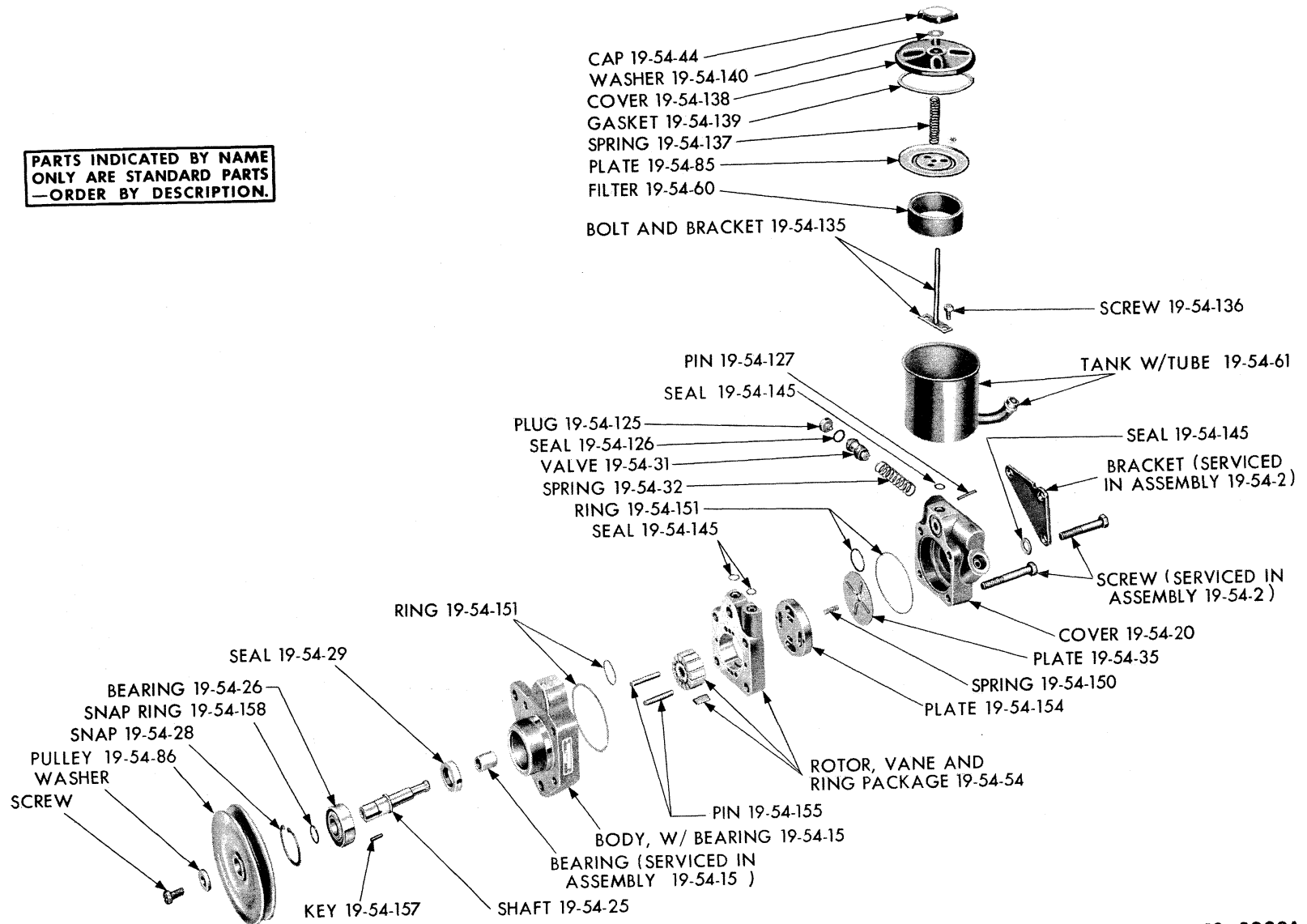
PARTS INDICATED BY NAME ONLY ARE STANDARD PARTS —ORDER BY DESCRIPTION.

19x6698A

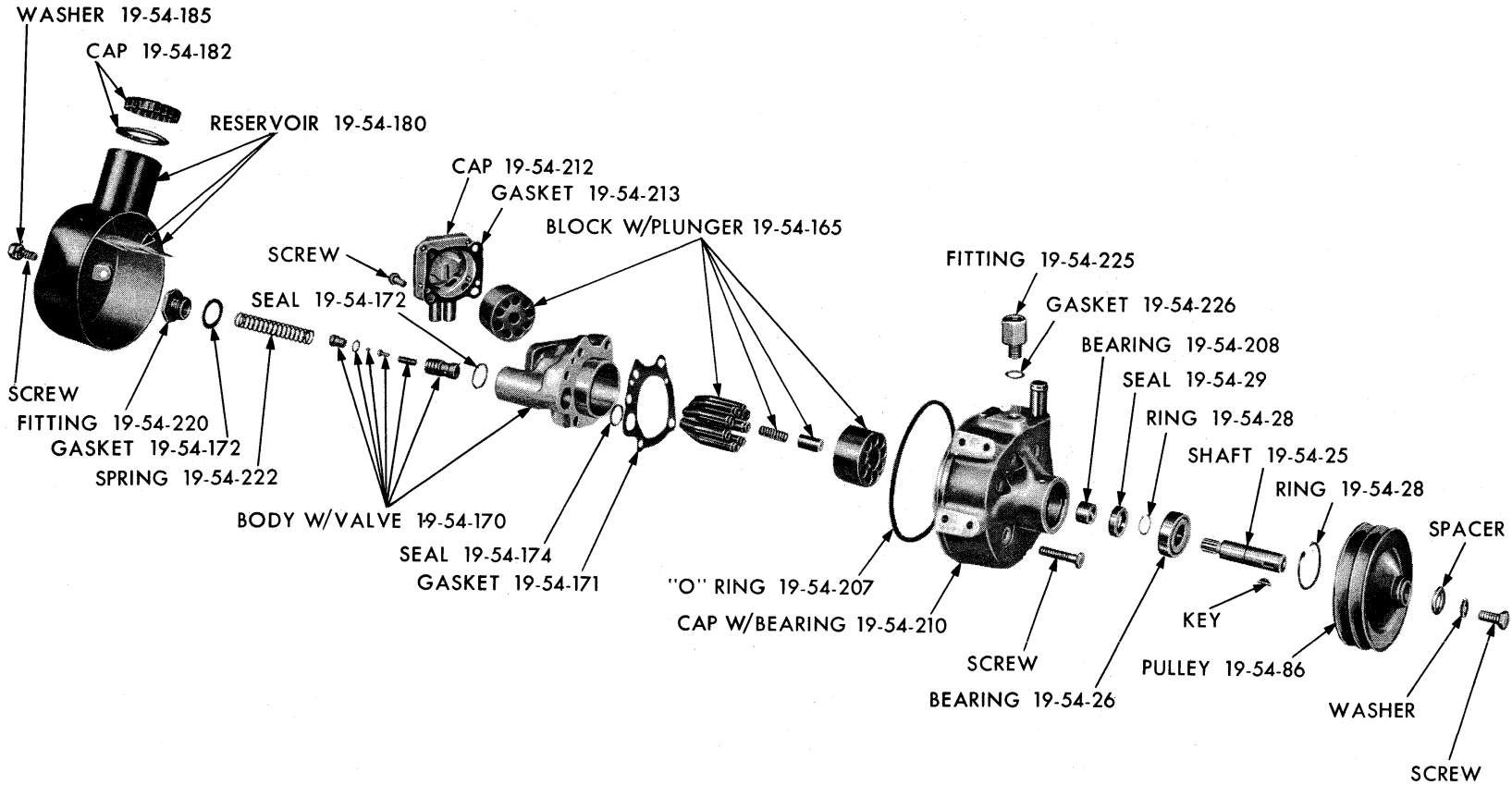
Plate 19-6

POWER STEERING PUMP (1672 697)

PARTS INDICATED BY NAME ONLY ARE STANDARD PARTS —ORDER BY DESCRIPTION.



19x8029A



**PARTS INDICATED BY NAME
 ONLY ARE STANDARD PARTS
 —ORDER BY DESCRIPTION.**

19x8061B

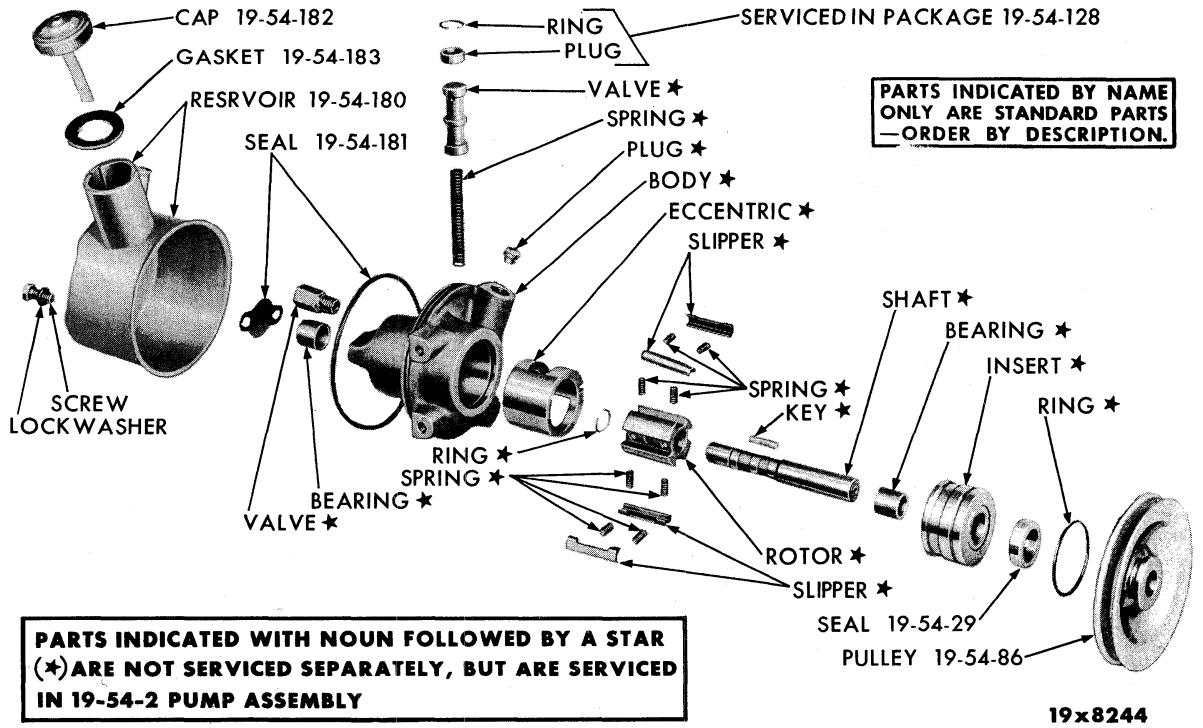


Plate 19-9

POWER STEERING PUMP (WITH PRESSED-ON PULLEY)

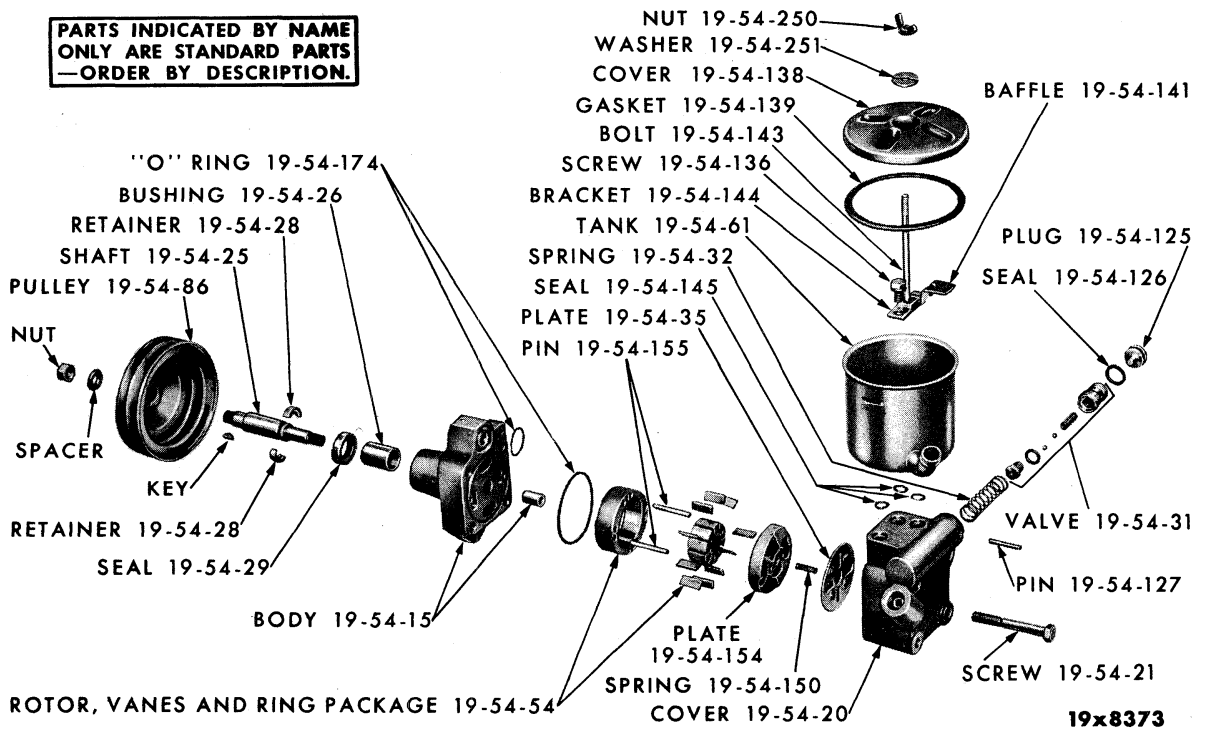


Plate 19-10

POWER STEERING PUMP (1826 158)

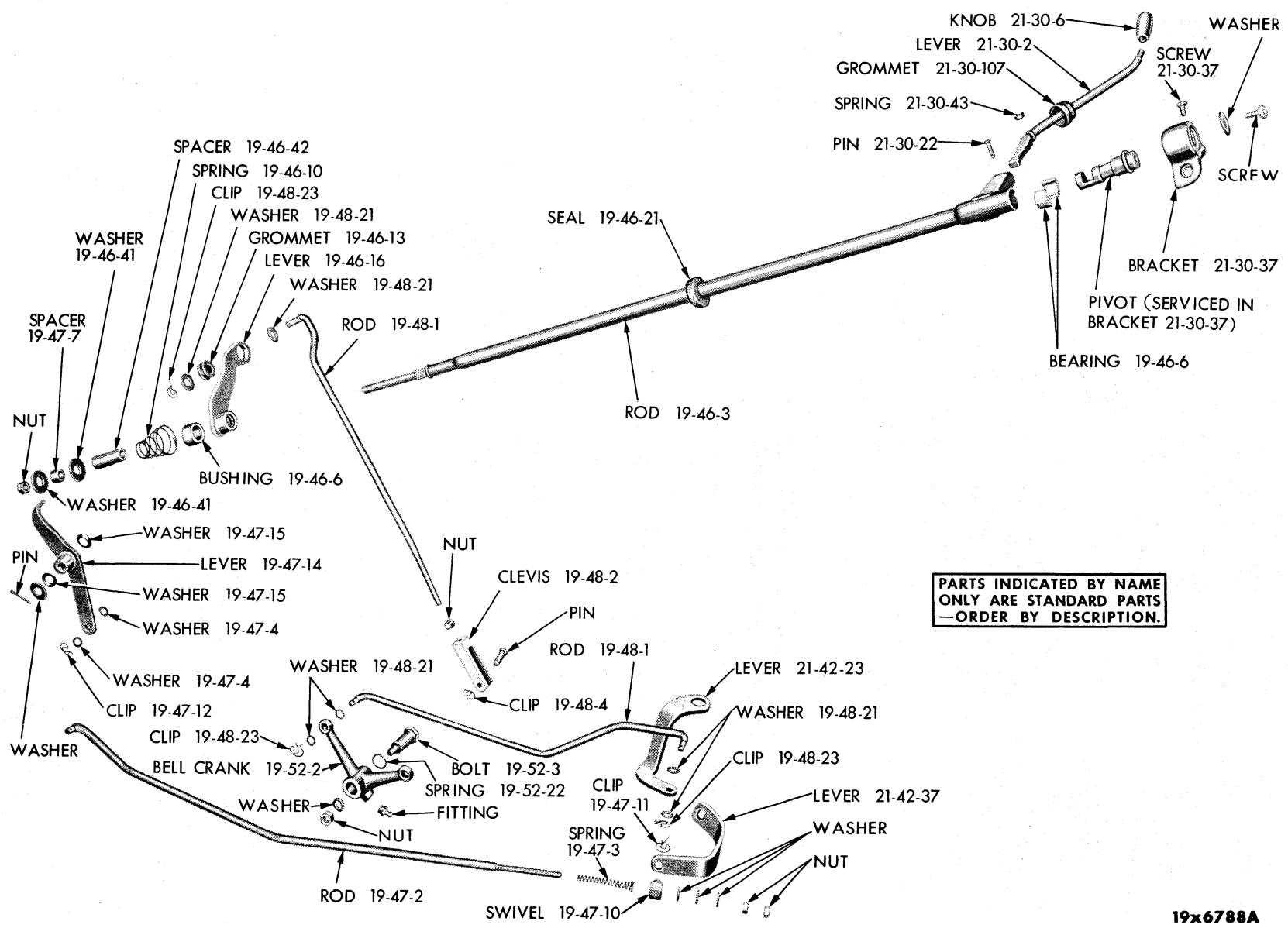
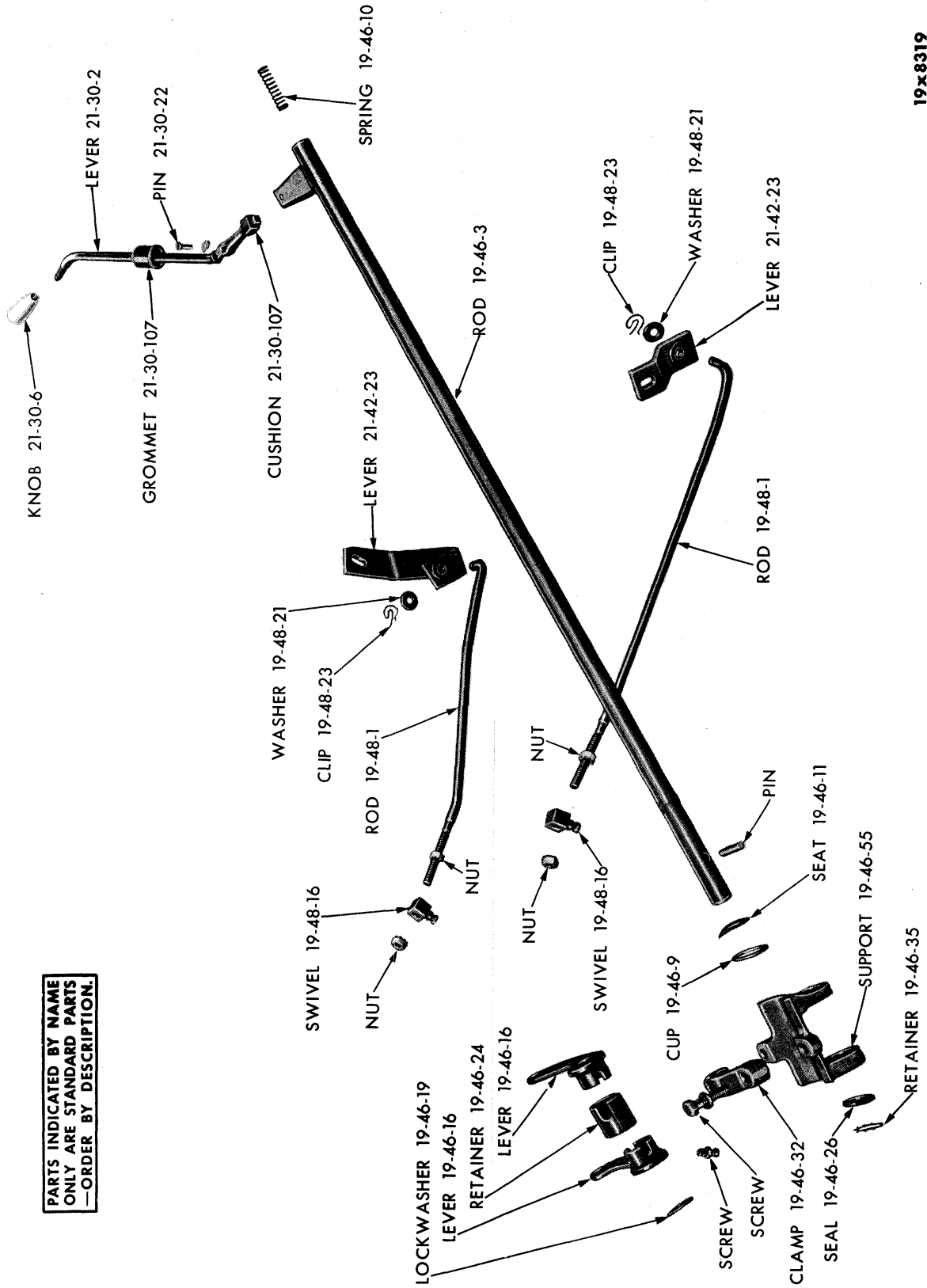


Plate 19-11

TRANSMISSION CONTROLS (1955-56 MODELS - USED WITH STANDARD TRANSMISSION)

19x6788A

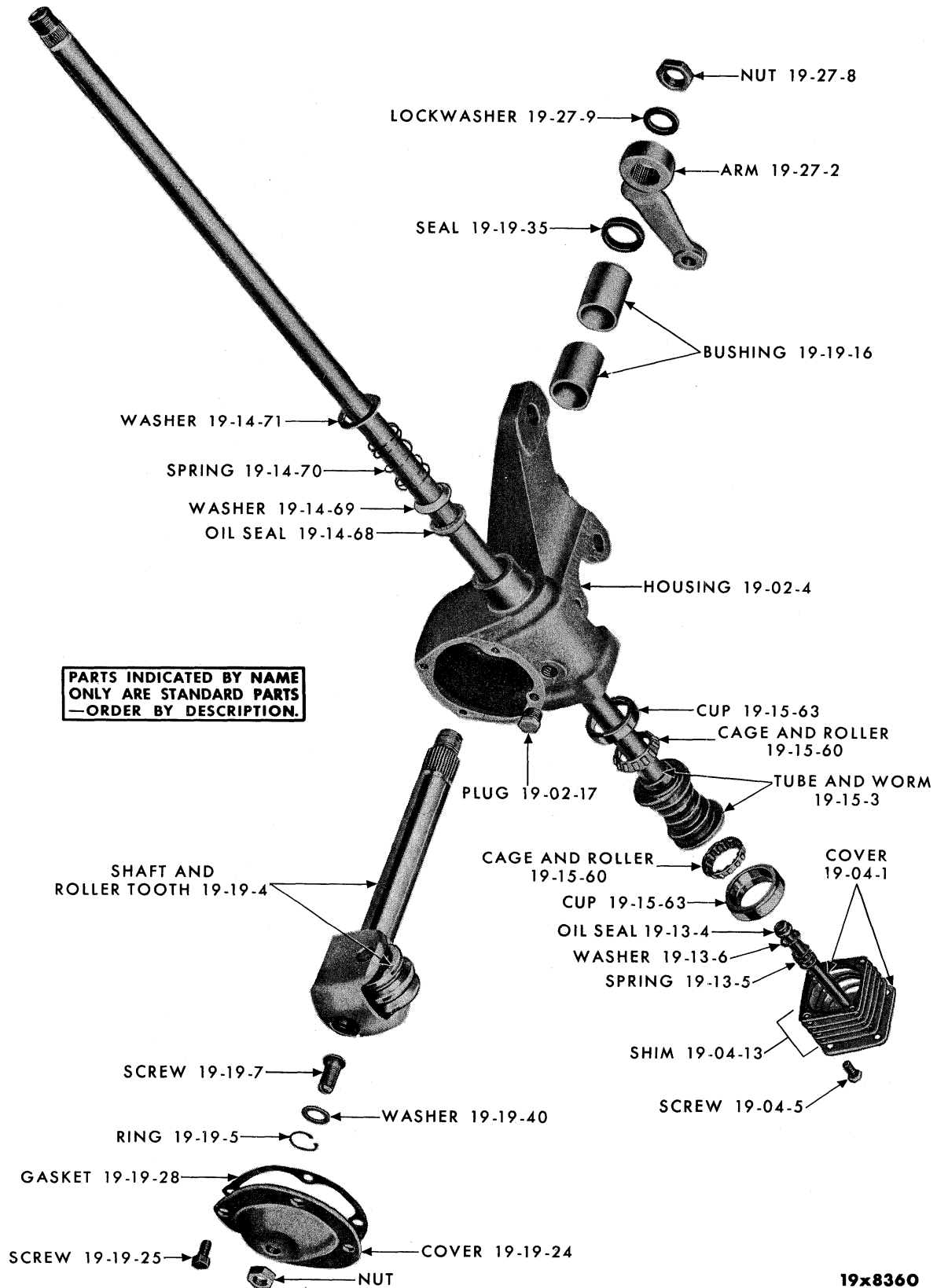


PARTS INDICATED BY NAME
 ONLY ARE STANDARD PARTS
 —ORDER BY DESCRIPTION.

TRANSMISSION CONTROLS (1957-58 MODELS - USED WITH STANDARD TRANSMISSION)

19x8319

Plate 19-12



19x8360

CODE	PART NAME AND DESCRIPTION	NO. OF CYL.	PLYMOUTH	DODGE	DESOTO	CHRYSLER AND IMPERIAL	PER CAR	PART NUMBER
STANDARD STEERING								
19-01-0 STEERING GEAR ASSEMBLY								
19-01-3	OVERHAUL PACKAGE	6-8	55	55	-	-	1	1752 214
		6-8	56	56	-	-	1	1752 217
	S27, LS1, LC1	6-8	57-58	57-58	57-58	58	1	1843 262
	S25, S26, LS2, LS3, C75-1, C76 Std. Trans. and Power Pkg.	8	-	-	57-58	57	1	1843 255
19-01-8	CHUCK	6-8	55-56	55-56	-	-	1	1557 916
	S27	6-8	57-58	57	57	-	1	1675 726
	LS1, LC1 AFTER LC1-8040	6-8	-	58	58	58	1	*1829 143
	w/Std. Trans., S23, C67, C71	8	-	-	55-56	55-56	1	1555 846
	w/PowerFlite, C67, C68, C71, C72	8	-	-	55-56	55-56	1	1610 988
	w/Std. Trans., S25, C75-1, C76 w/Power Pkg.	8	-	-	57	57	1	1730 947
	w/Auto. Trans., S25, S26, C75-1	8	-	-	57	57	1	1730 955
	w/Std. Trans., LS2	8	-	-	58	-	1	1829 144
	w/Auto. Trans., LS2, LS3	8	-	-	58	-	1	1829 145
	LC1, UP TO LC1-8040	8	-	-	-	58	1	1829 151
19-01-24	SPACER, Housing to Frame Bolt	6	55-56	55-56	-	-	3	864 818
	S27, LS1, LC1	6-8	57-58	57-58	57-58	58	1	1733 218
	C71, C72	8	-	-	56	56	1	1730 673
19-01-25	FERRULE, Housing to Frame Bolt	6	55-56	55-56	-	-	6	684 982
19-02-0 STEERING GEAR HOUSING								
19-02-4	HOUSING	6-8	55-56	55-56	-	-	1	1557 913
	S27	6-8	57-58	57	57	-	1	1675 728
	LD1 UP TO LD1-1950, LD2 UP TO LD2-14334, LD3 UP TO LD3-8190, LS1 UP TO LS1-4334	6-8	-	58	58	-	1	1850 533
	LD1 AFTER LD1-1950, LD2 AFTER LD2-14334, LD3 AFTER LD3-8190, LS1 AFTER LS1-4334, LS2, LS3, LC1 AFTER LC1-8040	6-8	-	58	58	58	1	1829 131
	C67, C68, C71, C72	8	-	-	55-56	55-56	1	1555 847
	S25, S26, C 75-1, C76 w/Std. Trans. and Power Pkg., LC1 UP TO LC1-8040	8	-	-	57	57-58	1	1730 948
19-02-17	PLUG, Filler, S27, LS2, LS3	6-8	55-58	55-57	57-58	-	1	1673 974
	LS1	6-8	-	58	58	-	1	386 718
	S25, S26, C75-1, C76 w/Std. Trans. and Power Pkg., LC1	8	-	-	57	57-58	1	1142 221
	C67, C68, C71, C72	8	-	-	55-56	55-56	1	386 718
19-02-18	WASHER, Housing to Frame, D55, D63, C67, C68, C71, C72	6-8	55-56	55-56	55-56	55-56	★	673 294
	C75-1, LC1	6-8	57-58	57-58	57-58	57-58	★	1639 652
19-02-46	PLATE, Frame	6	55-56	55-56	-	-	1	1618 790
19-02-47	INSULATOR, Frame, Inner	6	55	55	-	-	1	1618 607
	Inner	6	56	56	-	-	3	1618 607
	Outer, .79	6	55-56	55-56	-	-	1	1618 796
	Outer, .48	6	55-56	55-56	-	-	2	1618 795
19-04-0 STEERING GEAR HOUSING COVER								
19-04-1	COVER, S27	6-8	55-58	55-57	57	-	1	1092 193
	LS1	6-8	-	58	58	-	1	1189 861
	w/Grease RETAINER, S27	6-8	55-57	55-57	57	-	1	* 627 659
		6-8	58	-	-	-	1	*1829 605
	LS1	6-8	-	58	58	-	1	1850 536
	w/OIL SEAL, S25, S26, C67, C68, C71, C72, C75-1, C76 w/Std. Trans. and Power Pkg., LC1	8	-	-	55-57	55-58	1	1326 909
	LS2, LS3	8	-	-	58	-	1	1829 568
19-04-5	SCREW, S27	6-8	55-57	55-57	57	-	4	1188 668
	S25, S26, C67, C68, C71, C72, C75-1, C76 w/Std. Trans. and Power Pkg., LC1	6-8	58	58	55-58	55-58	4	1134 479

★ Indicates use as required. Numerals in parentheses () refer to notes. Printed in U.S.A.
 ☐ Indicates parts not listed in any previous parts book. Prices and specifications subject to change without notice.
 * Indicates change or addition. Nov. 10, 1958 Supersedes June 25, 1958.

1955-58 PASSENGER CAR PARTS LIST

STEERING

CODE	PART NAME AND DESCRIPTION	NO. OF CYL.	PLYMOUTH	DODGE	DESOTO	CHRYSLER AND IMPERIAL	PER CAR	PART NUMBER
STANDARD STEERING								
19-04-13	SHIM, .003 thk., S27	6-8	55-58	55-57	57	-	★	1142 261
	.025 thk., S27	6-8	55-58	55-57	57	-	★	1311 339
	.003 thk., S25, S26, C67, C68, C71, C72, C75-1, C76 w/Std. Trans. and Power Pkg., LC1	6-8	-	58	55-58	55-58	★	1123 313
	.006 thk., S25, S26, C67, C68, C71, C72, C75-1, C76 w/Std. Trans. and Power Pkg., LC1	6-8	-	58	55-58	55-58	★	620 180
	.011 thk., S25, S26, C67, C68, C71, C72, C75-1, C76 w/Std. Trans. and Power Pkg., LC1	6-8	-	58	55-58	55-58	★	620 181
19-13-0 STEERING GEAR GREASE RETAINING TUBE								
19-13-4	OIL SEAL, S27, LC1, UP TO LC1-8040	6-8	55-58	55-57	57	58	1	* 653 194
	LD1 UP TO LD1-1950, LD2 UP TO LD2-14334, LD3 UP TO LD3-8190, LS1 UP TO LS1-4334	6-8	-	58	58	-	1	*1850 537
	LD1 AFTER LD1-1950, LD2 AFTER LD2-14334, LD3 AFTER LD3-8190, LS1 AFTER LS1-4334, LS2, LS3, LC1 AFTER LC1-8040	6-8	-	58	58	58	1	*1829 134
19-13-5	SPRING, Oil Seal, LD1 UP TO LD1-1950, LD2 UP TO LD2-14334, LD3 UP TO LD3-8190, S27, LS1 UP TO LS1-4334, LC1 UP TO LC1-8040	6-8	55-58	55-58	57-58	58	1	* 631 456
	LD1 AFTER LD1-1950, LD2 AFTER LD2-14334, LD3 AFTER LD3-8190, LS1 AFTER LS1-4334, LS2, LS3, LC1 AFTER LC1-8040	6-8	-	58	58	58	1	*1829 135
19-13-6	WASHER, Oil Seal, LD1 UP TO LD1-1950, LD2 UP TO LD2-14334, LD3 UP TO LD3-8190, S27, LS1 UP TO LS1-4334, LC1 UP TO LC1-8040	6-8	55-58	55-58	57-58	58	1	* 631 457
	LD1 AFTER LD1-1950, LD2 AFTER LD2-14334, LD3 AFTER LD3-8190, LS1 AFTER LS1-4334, LS2, LS3, LC1 AFTER LC1-8040	6-8	-	58	58	58	1	*1829 133
19-14-0 STEERING GEAR COLUMN JACKET								
19-14-1	JACKET, w/Std. Trans.	6-8	55-56	55-56	-	-	1	1614 622
	w/PowerFlite	6-8	55-56	55-56	-	-	1	1612 090
	w/Std. Trans., S27, LS1	6-8	57-58	57-58	57-58	-	1	1675 747
	w/Auto. Trans., S27, LS1, LC1	6-8	57-58	57-58	57-58	58	1	1731 115
	w/Std. Trans., S23	8	-	-	55-56	-	1	1614 617
	w/PowerFlite	8	-	-	55-56	-	1	1612 091
	w/Std. Trans., S25, LS2, C75-1, C76 w/Power Pkg.	8	-	-	57-58	57	1	1675 748
	w/Auto. Trans., S25, S26, C75-1	8	-	-	57	57	1	1731 114
	w/Auto. Trans., LS2, LS3	8	-	-	58	-	1	1829 582
	w/Std. Trans., C67, C71	8	-	-	-	55-56	1	1614 618
	w/PowerFlite, C67, C68, C71, C72	8	-	-	-	55-56	1	1612 093
	w/Auto. Trans., w/Auto Pilot, LC1	8	-	-	-	58	1	1856 333
19-14-4	BEARING, C67, C68, C71, C72, C75-1, LC1	6-8	55-58	55-58	55-58	55-58	1	1488 462
19-14-5	SPRING, C67, C68, C71, C72, C75-1, LC1	6-8	55-58	55-58	55-58	55-58	1	1127 165
19-14-14	PLUG, D55-1, D56, D62, D63-1	6-8	55-56	55-56	-	-	1	1618 463
19-14-15	SPACER, Bearing, C67, C68, C71, C72, C75-1, LC1	6-8	55-58	55-58	55-58	55-58	1	1316 772
19-14-35	CLAMP, C67, C68, C71, C72, C75-1, C76 w/Std. Trans. and Power Pkg., LC1	6-8	55-58	55-58	55-58	55-58	1	1142 299
19-14-68	OIL SEAL, S27, LS1, LC1	6-8	55-58	55-58	57-58	58	1	661 117
	Upper, S25, S26, LS2, LS3, C67, C68, C71, C72, C75-1, C76 w/Std. Trans. and Power Pkg.	8	-	-	55-58	55-57	1	1142 056
19-14-69	WASHER, Oil Seal, S27, LC1	6-8	55-58	55-58	57-58	58	1	661 118
19-14-70	SPRING, Oil Seal, S27, LC1	6-8	55-58	55-58	57-58	58	1	661 119
19-14-71	WASHER, Oil Seal Spring, S27, LC1	6-8	55-58	55-58	57-58	58	1	1311 849
19-14-77	ADAPTER, Upper, Right	6-8	-	55-56	-	-	1	1607 841
	Upper, Left	6-8	-	55-56	-	-	1	1607 842
	Lower	6-8	-	55-56	-	-	1	1602 950

★ Indicates use as required.

Numerals in parentheses () refer to notes.

Printed in U.S.A.

⊠ Indicates parts not listed in any previous parts book.

Prices and specifications subject to change without notice.

June 25, 1958 Supersedes Feb. 20, 1958.

* Indicates change or addition.

CODE	PART NAME AND DESCRIPTION	NO. OF CYL.	PLYMOUTH	DODGE	DESOTO	CHRYSLER AND IMPERIAL	PER CAR	PART NUMBER
STANDARD STEERING								
19-15-0 STEERING GEAR TUBE AND WORM								
19-15-3	TUBE, w/WORM.	6-8	55-56	55-56	-	-	1	1557 917
	S27	6-8	57-58	57	57	-	1	1675 733
	LS1, LC1 AFTER LC1-8040	6-8	-	58	58	58	1	*1829 148
	w/Std. Trans., S23, C67, C71	8	-	-	55-56	55-56	1	1555 856
	w/PowerFlite, C67, C68, C71, C72	8	-	-	55-56	55-56	1	1610 989
	w/Std. Trans., S25, C75-1, C76 w/Power Pkg.	8	-	-	57	57	1	1730 953
	w/Auto. Trans., S25, S26, C75-1	8	-	-	57	57	1	1730 954
	w/Std. Trans., LS2	8	-	-	58	-	1	1829 149
	w/Auto. Trans., LS2, LS3	8	-	-	58	-	1	1829 150
	LC1 UP TO LC1-8040	8	-	-	-	58	1	*1828 916
19-15-12	GROMMET, Tube Insulator, C67, C68, C71, C72, C75-1, C76 w/Std. Trans. and Power Pkg., LC1	6-8	-	55-58	55-58	55-58	1	1403 226
19-15-60	CAGE and ROLLER, Worm Thrust Bearing, S27 S25, S26, C67, C68, C71, C72, C75-1, C76 w/Std. Trans. and Power Pkg., LC1	6-8	55-58	55-57	57	-	2	669 077
19-15-63	CUP, Worm Upper Thrust Bearing, S27	6-8	55-58	55-57	57	-	1	618 311
	Lower Thrust Bearing, S27	6-8	55-58	55-57	57	-	1	632 685
	Upper Thrust Bearing, S25, S26, C67, C68, C71, C72, C75-1, C76 w/Std. Trans. and Power Pkg., LC1	6-8	-	58	55-58	55-58	2	376 751
	Lower Thrust Bearing, S25, S26, C67, C68, C71, C72, C75-1, C76 w/Std. Trans. and Power Pkg., LC1	6-8	-	58	55-58	55-58	2	637 539
19-19-0 STEERING GEAR SHAFT AND ROLLER TOOTH ASSEMBLY								
19-19-4	SHAFT, w/Roller Tooth	6-8	55-56	55-56	-	-	1	1554 024
	S27	6-8	57-58	57	57	-	1	1675 729
	LD1 UP TO LD1-1950, LD2 UP TO LD2-14334, LD3 UP TO LD3-8190, S25, S26, LS1 UP TO LS1-4334, C75-1, C76 w/Std. Trans. and Power Pkg., LC1 UP TO LC1-8040	6-8	-	58	57-58	57-58	1	*1730 950
	LD1 AFTER LD1-1950, LD2 AFTER LD2-14334, LD3 AFTER LD3-8190, LS1 AFTER LS1-4334, LS2, LS3, LC1 AFTER LC1-8040.	6-8	-	58	58	58	1	*1829 126
	C67, C68, C71, C72	8	-	-	55-56	55-56	1	1555 858
19-19-5	SNAP RING, C67, C68, C71, C72	8	-	-	55-56	55-56	1	1316 862
	LC1	6-8	58	58	58	58	1	*1316 862
19-19-7	SCREW, Shaft Adjusting, 1-1/4", C75-1, C76 w/Std. Trans. and Power Pkg., LC1	6-8	55-58	55-58	57-58	57-58	1	682 905
	1-13/32", C67, C68, C71, C72	8	-	-	55-56	55-56	1	1536 255
19-19-9	NUT, Adjusting Screw Lock	6-8	55	55	-	-	1	682 906
	C67, C68, C71, C72	8	-	-	55-56	55-56	1	1536 270
19-19-10	PLATE, Adjusting Screw Lock	6-8	55	55	-	-	1	682 907
19-19-16	BUSHING, Shaft	6-8	55	55	-	-	2	866 929
		6-8	56	56	-	-	2	1615 679
	Upper, S27, LS2, LS3	6-8	57-58	57	57-58	-	1	1673 962
	Lower, S27, LS2, LS3	6-8	57-58	57	57-58	-	1	1615 679
	S25, S26, LS1, C75-1, C76 w/Std. Trans. and Power Pkg., LC1	6-8	-	58	57-58	57-58	3	857 706
	C67, C68, C71, C72	8	-	-	55-56	55-56	1	857 706
19-19-24	COVER, Shaft, S27	6-8	55-58	55-57	57	-	1	1138 356
	LD1 UP TO LD1-1950, LD2 UP TO LD2-14334, LD3 UP TO LD3-8190, LS1 UP TO LS1-4334	6-8	-	58	58	-	1	*1850 535
	LD1 AFTER LD1-1950, LD2 AFTER LD2-14334, LD3 AFTER LD3-8190, LS1 AFTER LS1-4334, LC1 AFTER LC1-8040	6-8	-	58	58	58	1	*1829 128

★ Indicates use as required. Numerals in parentheses () refer to notes. Printed in U.S.A.
 □ Indicates parts not listed in any previous parts book. Prices and specifications subject to change without notice.
 * Indicates change or addition. Page 19-13 June 25, 1958 Supersedes Feb. 20, 1958.

1955-58 PASSENGER CAR PARTS LIST

STEERING

CODE	PART NAME AND DESCRIPTION	NO. OF CYL.	PLYMOUTH	DODGE	DESOTO	CHRYSLER AND IMPERIAL	PER CAR	PART NUMBER
	C67, C68, C71, C72	8	-	-	55-56	55-56	1	1555 854
	S25, S26, LS2, LS3, C75-1, C76 w/Std. Trans. and Power Pkg., LC1 UP TO LC1-8040	8	-	-	57-58	57-58	1	⊠1738 205
19-19-25	SCREW, Shaft Cover, C75-1, C76 w/Std. Trans. and Power Pkg., LC1	6-8	55-58	55-58	58	58	4	1188 668
	C67, C68, C71, C72	8	-	-	55-56	55-56	4	1134 479
19-19-27	BUSHING, Shaft Cover, C67, C68, C71, C72	8	-	-	55-56	55-56	1	1329 084
19-19-28	GASKET, Shaft Cover, S27	6-8	55-58	55-57	57	-	1	1142 262
	C67, C68, C71, C72	8	-	-	55-56	55-56	1	1329 091
	S25, S26, C75-1, C76 w/Std. Trans. and Power Pkg., LC1	8	-	58	57-58	57-58	1	1738 206
19-19-35	OIL SEAL, Shaft, C67, C68, C71, C72	6-8	55-56 (1)	55-56 (1)	55-56 (1)	55-56 (1)	1	1484 523
	C71, C72, C75-1, LC1	6-8	56-58 (2)	56-58 (2)	56-58 (2)	56-58 (2)	1	1730 985
19-19-40	WASHER, Shaft Thrust, LS1, C75-1, C76 w/Std. Trans. and Power Pkg., LC1	6-8	55-58	55-58	57-58	57-58	1	1123 311
	C67, C68, C71, C72	8	-	-	55-56	55-56	1	1329 092
	LS2, LS3	8	-	-	58	-	1	1329 092

19-27-0 STEERING GEAR ARM AND IDLER ARM

19-27-2	ARM, Gear.	6	55-56	55-56	-	-	1	1611 779
		8	55-56	55-56	-	-	1	1611 205
	LD1 UP TO LD1-1950, LD2 UP TO LD2-14334, LD3 UP TO LD3-8190, S27, LS1 UP TO LS1-4334, LC1 UP TO LC1-8040	6-8	57-58	57-58	57-58	58	1	*1673 005
	LD1 AFTER LD1-1950, LD2 AFTER LD2-14334, LD3 AFTER LD3-8190, LS1 AFTER LS1-4334, LC1 AFTER LC1-8040	6-8	-	58	58	58	1	⊠1824 941
	LS2, LS3	8	-	-	58	-	1	1824 942
	C67, C68, C71, C72	8	-	-	55-56	55-56	1	1558 809
	S25, S26, C75-1, C76-300	8	-	-	57	57	1	1672 983
19-27-8	NUT, Arm, C67, C68, C71, C72, C75-1, LC1	6-8	55-58	55-58	55-58	55-58	1	1392 770
19-27-9	WASHER, Arm Nut Lock, C67, C68, C71, C72, C75-1, LC1	6-8	55-58	55-58	55-58	55-58	1	52 855
19-27-31	ARM, Idler.	8	55-56	55-56	-	-	1	1611 209
	S27, LS1, LC1	6-8	57-58	57-58	57-58	58	1	1734 335
	C67, C68, C71, C72	8	-	-	55-56	55-56	1	1558 793
	S25, S26, LS2, LS3, C75-1	8	-	-	58	57	1	1734 330
19-27-33	BRACKET, Idler Arm.	8	55-56	55-56	-	-	1	1611 211
	C67, C68, C71, C72	8	-	-	55-56	55-56	1	1556 306
19-27-34	BUSHING, Idler Arm	8	55-56	55-56	-	-	2	1634 544
	Upper, C67, C68, C71, C72	8	-	-	55-56	55-56	1	1556 304
	Lower, C67, C68, C71, C72	8	-	-	55-56	55-56	1	1634 544
19-27-40	SEAL, Idler Arm Bushing	8	55-56	55-56	-	-	2	1535 115
	Dust, Upper, C67, C68, C71, C72	8	-	-	55-56	55-56	1	1556 305
	Dust, Lower, C67, C68, C71, C72	8	-	-	55-56	55-56	1	1535 115
19-27-45	BOLT, Linkage Idler Arm, C75-1, LC1	6-8	57-58	57-58	57-58	57-58	1	1734 326
19-27-50	LINK, Center	8	55-56	55-56	-	-	1	1615 151
	S27, LS1, LC1	6-8	57-58	57-58	57-58	58	1	1673 008
	C67, C68, C71, C72	8	-	-	55-56	55-56	1	1615 147
	S25, S26, LS2, LS3, C75-1	8	-	-	57-58	57	1	1672 980
19-27-55	SEAL, Center Link Dust	8	55-56	55-56	-	-	1	1141 201
	C75-1, LC1	6-8	57-58	57-58	57-58	57-58	2	1670 299
	C67, C68, C71, C72	8	-	-	55-56	55-56	1	1322 964

NOTE 1: P28, P29, D62, D63, S23, S24, C71, C72, used up to date 4-5-56 stenciled on housing side of flange, where upper housing bolts to lower housing.

NOTE 2: P28, P29, D62, D63, S23, S24, C71, C72, used after date 4-5-56 stenciled on housing side of flange, where upper housing bolts to lower housing.

★ Indicates use as required.

Numerals in parentheses () refer to notes.

Printed in U.S.A.

⊠ Indicates parts not listed in any previous parts book.

Prices and specifications subject to change without notice.

June 25, 1958 Supersedes Oct. 10, 1957.

Page 19-14

* Indicates change or addition.

CODE	PART NAME AND DESCRIPTION	NO. OF CYL.	PLYMOUTH	DODGE	DESOTO	CHRYSLER AND IMPERIAL	PER CAR	PART NUMBER
------	---------------------------	-------------	----------	-------	--------	-----------------------	---------	-------------

STANDARD STEERING

19-30-0 STEERING WHEEL

19-30-4	WHEEL, Plastic, Beige w/1631 102 Ring, UP TO	6-8	55 (3)	-	-	-	1	1635 253
	Plastic, Beige, AFTER	6-8	55-56 (3)	-	-	-	1	*1635 253
	Rubber, Beige	6-8	55-56	-	-	-	1	1615 652
	Rubber, Gray	6-8	55-56	-	-	-	1	1670 184
	Rubber, Blue	6-8	56	-	-	-	1	1670 183
	Rubber, Cream	6-8	56	-	-	-	1	1670 185
	Rubber, Turquoise	6-8	56	-	-	-	1	1670 187
	Rubber, Red	6-8	56	-	-	-	1	1670 188
	Rubber, White	6-8	56	-	-	-	1	1670 189
	Plastic, White and Black	6-8	57-58	-	-	-	1	1730 963
	Rubber, Blue	6-8	57	-	-	-	1	1673 970
	Rubber, Gold	6-8	57	-	-	-	1	1736 963
	Rubber, Black	6-8	57	-	-	-	1	1736 961
	Rubber, Brown	6-8	57	-	-	-	1	1736 960
	Rubber, Green	6-8	57	-	-	-	1	1736 959
	Plastic, White and Brown, P31 Fury, LP2 Fury	8	57-58	-	-	-	1	1820 604
	Rubber, White	6-8	58	-	-	-	1	⊠1828 762
	Rubber, Blue	6-8	58	-	-	-	1	⊠1828 763
	Rubber, Green	6-8	58	-	-	-	1	⊠1828 764
	Rubber, Red	6-8	58	-	-	-	1	⊠1828 765
	Rubber, Beige	6-8	58	-	-	-	1	⊠1820 041
	Plastic, White and Green	6-8	58	-	-	-	1	⊠1829 591
	Plastic, White and Blue	6-8	58	-	-	-	1	⊠1829 592
	Plastic, Black and Red	6-8	58	-	-	-	1	⊠1829 593
	Plastic, White and Black, w/1637 492 Ring, UP TO	6-8	-	55 (1)	-	-	1	1639 646
	Plastic, White and Black, AFTER	6-8	-	55 (1)	-	-	1	1639 646
	Plastic, Ivory and Green, w/1637 492 Ring, UP TO	6-8	-	55 (1)	-	-	1	1637 484
	Plastic, Ivory and Green, AFTER	6-8	-	55 (1)	-	-	1	1637 484
	Plastic, Ivory and Blue, w/1637 492 Ring, UP TO	6-8	-	55 (1)	-	-	1	1637 485
	Plastic, Ivory and Blue, AFTER	6-8	-	55 (1)	-	-	1	1637 485
	Rubber, Black, w/1637 492 Ring, UP TO	6-8	-	55 (1)	-	-	1	1637 489
	Rubber, Black, AFTER	6-8	-	55-56 (1)	-	-	1	1637 489
	Rubber, Blue, w/1637 492 Ring, UP TO	6-8	-	55 (1)	-	-	1	1637 490
	Rubber, Blue, AFTER	6-8	-	55 (1)	-	-	1	1637 490
	Rubber, Green, w/1637 492 Ring, UP TO	6-8	-	55 (1)	-	-	1	1637 491
	Rubber, Green, AFTER	6-8	-	55 (1)	-	-	1	1637 491
	Plastic, White and Blue	6-8	-	56	-	-	1	1639 644
	Plastic, White and Green	6-8	-	56	-	-	1	1639 645
	Plastic, White and Black	6-8	-	56	-	-	1	1639 646
	Rubber, Blue	6-8	-	56	-	-	1	1639 642
	Rubber, Green	6-8	-	56	-	-	1	1639 643
	Plastic, Black and White	6-8	-	57	-	-	1	1675 721
	Plastic, Black and Gold	6-8	-	57	-	-	1	1736 941
	Plastic, Green, UP TO	6-8	-	57 (2)	-	-	1	1736 940
	Plastic, Green, AFTER	6-8	-	57 (2)	-	-	1	1820 180
	Plastic, Blue	6-8	-	57	-	-	1	1736 939
	Rubber, Blue	6-8	-	57	-	-	1	1675 725

NOTE 1: D55 Approx. Ser. No. 34871456 Det. Blt. -42522144 L. A. Blt.
D56 Approx. Ser. No. 32209087 Det. Blt. -48016123 L. A. Blt.

NOTE 2: D66 Ser. No. 35213103, D67 Ser. No. 37273386, D70 Ser. No. 38004720, D71 Ser. No. 38535461, D72 Ser. No. 32264294.

NOTE 3: P26 Ser. No. 1450878, P27 Ser. No. 15816531.

★ Indicates use as required.

Numerals in parentheses () refer to notes.

Printed in U.S.A.

⊠ Indicates parts not listed in any previous parts book.

Prices and specifications subject to change without notice.

* Indicates change or addition.

1955-58 PASSENGER CAR PARTS LIST

STEERING

CODE	PART NAME AND DESCRIPTION	NO. OF CYL.	PLYMOUTH	DODGE	DESOTO	CHRYSLER AND IMPERIAL	PER CAR	PART NUMBER
	Rubber, Black	6-8	-	57-58	-	-	1	1736 938
	Rubber, Green	6-8	-	57	-	-	1	1736 937
	Rubber, Blue	6-8	-	58	-	-	1	⊠1828 571
	Rubber, Green	6-8	-	58	-	-	1	⊠1828 572
	Rubber, Tan	6-8	-	58	-	-	1	⊠1828 573
	Plastic, Blue	6-8	-	58	-	-	1	⊠1828 574
	Plastic, Green	6-8	-	58	-	-	1	⊠1828 575
	Plastic, Beige and Tan	6-8	-	58	-	-	1	⊠1828 576
	Plastic, Black and Ivory	6-8	-	58	-	-	1	⊠1828 577
	Plastic, Ivory and Copper Pearl, LD3	8	-	58	-	-	1	⊠1856 337
	Plastic, Ivory and Black, w/PowerFlite	8	-	-	55-56	-	1	1616 765
	Plastic, Ivory and Blue, w/PowerFlite	8	-	-	55	-	1	1618 594
	Plastic, Ivory and Green, w/PowerFlite	8	-	-	55	-	1	1618 595
	Plastic, Coral and Black, w/PowerFlite	8	-	-	55	-	1	1618 596
	Rubber, Green, w/PowerFlite	8	-	-	55	-	1	1614 611
	Rubber, Blue, w/PowerFlite	8	-	-	55	-	1	1618 592
	Rubber, Ivory, w/PowerFlite	8	-	-	55	-	1	1618 593
	Rubber, Gray, w/Std. Trans., S23	8	-	-	55-56	-	1	1554 948
	Plastic, Blue, w/PowerFlite	8	-	-	56	-	1	1670 197
	Plastic, Green, w/PowerFlite	8	-	-	56	-	1	1670 198
	Rubber, Blue, w/PowerFlite	8	-	-	56	-	1	1670 194
	Rubber, Blue, w/Std. Trans., S23	8	-	-	56	-	1	1670 191
	Rubber, Green, w/PowerFlite	8	-	-	56	-	1	1670 195
	Rubber, Green, w/Std. Trans., S23	8	-	-	56	-	1	1670 192
	Rubber, Ivory, w/PowerFlite	8	-	-	56	-	1	1618 593
	Plastic, White and Gold, S24	8	-	-	56	-	1	1732 382
	Plastic, Gray and Beige, w/Std. Trans., S25	8	-	-	57	-	1	1738 185
	Plastic, Gray, w/Std. Trans., S25	8	-	-	57	-	1	1738 184
	Plastic, Green, w/Std. Trans., S25	8	-	-	57	-	1	1738 183
	Plastic, Blue, w/Std. Trans., S25	8	-	-	57	-	1	1738 182
	Plastic, Gray and Beige, w/Auto. Trans., S25, S26	8	-	-	57	-	1	1738 181
	Plastic, Gray, w/Auto. Trans., S25, S26	8	-	-	57	-	1	1738 177
	Plastic, Green, w/Auto. Trans., S25, S26	8	-	-	57	-	1	1738 176
	Plastic, Blue, w/Auto. Trans., S25, S26	8	-	-	57	-	1	1730 969
	Rubber, Gray, w/Std. Trans., S25	8	-	-	57	-	1	1738 173
	Rubber, Green, w/Std. Trans., S25	8	-	-	57	-	1	1738 172
	Rubber, Blue, w/Std. Trans., S25, S27	8	-	-	57	-	1	1732 638
	Rubber, Gray, w/Auto. Trans., S25	8	-	-	57	-	1	1738 175
	Rubber, Green, w/Auto. Trans., S25	8	-	-	57	-	1	1738 174
	Rubber, Blue, w/Auto. Trans., S25	8	-	-	57	-	1	1732 640
	Plastic, Gray and Buff, S26 Adventurer	8	-	-	57	-	1	1820 523
	Plastic, Green, S27	8	-	-	57	-	1	1820 179
	Plastic, Blue, S27	8	-	-	57	-	1	1738 166
	Plastic, Black and Silver, S27	8	-	-	57	-	1	1738 165
	Plastic, Black and Beige, S27	8	-	-	57	-	1	1820 603
	Rubber, Black, S27, LS1	8	-	-	57-58	-	1	1736 927
	Rubber, Blue, S27	8	-	-	57	-	1	1738 178
	Rubber, Green, S27	8	-	-	57	-	1	1738 179
	Plastic, Blue, LS1	8	-	-	58	-	1	⊠1828 774
	Plastic, Black and Tan, LS1	8	-	-	58	-	1	⊠1828 776
	Plastic, Green, LS1	8	-	-	58	-	1	⊠1828 775
	Plastic, Ivory and Black, LS1	8	-	-	58	-	1	⊠1828 777
	Rubber, Blue, LS1	8	-	-	58	-	1	⊠1828 766
	Rubber, Green, LS1	8	-	-	58	-	1	⊠1828 767
	Rubber, Silver Gray, LS2	8	-	-	58	-	1	⊠1829 583
	Rubber, Blue, w/Auto. Trans., LS2	8	-	-	58	-	1	⊠1828 770
	Rubber, Green, w/Auto. Trans., LS2	8	-	-	58	-	1	⊠1828 771
	Rubber, Gray, w/Auto. Trans., LS2	8	-	-	58	-	1	⊠1828 772
	Rubber, Turquoise, w/Auto. Trans., LS2	8	-	-	58	-	1	⊠1828 773

★ Indicates use as required.

Numerals in parentheses () refer to notes.

Printed in U.S.A.

⊠ Indicates parts not listed in any previous parts book.

Prices and specifications subject to change without notice.

June 25, 1958 Supersedes Feb. 20, 1958.

Page 19-16

* Indicates change or addition.

CODE	PART NAME AND DESCRIPTION	NO. OF CYL.	PLYMOUTH	DODGE	DESOTO	CHRYSLER AND IMPERIAL	PER CAR	PART NUMBER
------	---------------------------	-------------	----------	-------	--------	-----------------------	---------	-------------

STANDARD STEERING

	Plastic, Gray and Blue, w/Auto. Trans., LS2, LS3	8	-	-	58	-	1	⊠1828 778
	Plastic, Gray and Green, w/Auto. Trans., LS2, LS3	8	-	-	58	-	1	⊠1828 779
	Plastic, Gray, w/Auto. Trans., LS2, LS3	8	-	-	58	-	1	⊠1828 780
	Plastic, Gray and Turquoise, w/Auto. Trans., LS2, LS3	8	-	-	58	-	1	⊠1828 781
	Plastic, Gray and Blue, w/Std. Trans., LS2	8	-	-	58	-	1	⊠1828 806
	Plastic, Gray and Green, w/Std. Trans., LS2	8	-	-	58	-	1	⊠1828 807
	Plastic, Gray, w/Std. Trans., LS2	8	-	-	58	-	1	⊠1828 808
	Plastic, Gray and Turquoise, w/Std. Trans., LS2	8	-	-	58	-	1	⊠1828 809
	Plastic, White and Gold, LS3 Adventurer	8	-	-	58	-	1	⊠1850 516
	Plastic, Green, w/PowerFlite, C67 Die Cast Insert, C68	8	-	-	-	55	1	1613 107
	Plastic, Blue, w/PowerFlite, C67 Die Cast Insert, C68	8	-	-	-	55	1	1618 476
	Plastic, White and Gold, w/PowerFlite, C67 Die Cast Insert, C68	8	-	-	-	55	1	1618 481
	Plastic, White and Blue, w/PowerFlite, C67 Die Cast Insert, C68	8	-	-	-	55	1	1618 480
	Plastic, Red and Black, w/PowerFlite, C67 Die Cast Insert, C68	8	-	-	-	55	1	1618 478
	Plastic, Black, w/PowerFlite, C67, C71, Die Cast Insert, C68	8	-	-	-	55-56	1	1631 119
	Plastic, Green, w/Std. Trans., C67	8	-	-	-	55	1	1618 482
	Plastic, Blue, w/Std. Trans., C67	8	-	-	-	55	1	1618 483
	Plastic, Black, w/Std. Trans., C67, C71	8	-	-	-	55-56	1	1330 994
	Plastic, Green, w/PowerFlite, C67	8	-	-	-	55	1	1613 092
	Plastic, Blue, w/PowerFlite, C67	8	-	-	-	55	1	1618 466
	Plastic, Black, w/PowerFlite, C67, C68, C71	8	-	-	-	55-56	1	1618 467
	Plastic, Beige and Black, C68-300, C72-300	8	-	-	-	55-56	1	1637 500
	Plastic, Gray, w/PowerFlite, C67 Die Cast Insert, C68	8	-	-	-	55	1	1618 475
	Plastic, White and Green, w/PowerFlite, C67 Die Cast Insert, C68	8	-	-	-	55	1	1618 479
	Plastic, Beige and Orange, w/PowerFlite, C67 Die Cast Insert, C68	8	-	-	-	55	1	1631 118
	Plastic, Blue, w/PowerFlite, C71	8	-	-	-	56	1	1670 204
	Plastic, Green, w/PowerFlite, C71	8	-	-	-	56	1	1670 205
	Plastic, Gray, w/PowerFlite, C71	8	-	-	-	56	1	1670 206
	Plastic, Brown, w/PowerFlite, C71	8	-	-	-	56	1	1670 207
	Plastic, Blue, w/PowerFlite, C71 Die Cast Insert, C72	8	-	-	-	56	1	1670 213
	Plastic, Green, w/PowerFlite, C71 Die Cast Insert, C72	8	-	-	-	56	1	1670 214
	Plastic, Gray and White, w/PowerFlite, C71 Die Cast Insert, C72	8	-	-	-	56	1	1670 215
	Plastic, Black and White, w/PowerFlite, C71 Die Cast Insert, C72	8	-	-	-	56	1	1670 217
	Plastic, Brown and Beige, w/PowerFlite, C71 Die Cast Insert, C72	8	-	-	-	56	1	1670 216
	Plastic, Black and Copper, w/PowerFlite, C71 Die Cast Insert, C72	8	-	-	-	56	1	1736 942
	Rubber, Blue, w/Std. Trans., C75-1	8	-	-	-	57	1	1732 638
	Rubber, Blue, w/Auto. Trans., C75-1	8	-	-	-	57	1	1736 916
	Rubber, Green, w/Auto. Trans., C75-1	8	-	-	-	57	1	1736 917
	Rubber, Black, w/Auto. Trans., C75-1	8	-	-	-	57	1	1736 921
	Rubber, Blue, w/Std. Trans., C75-1, C76 w/Power Pkg.	8	-	-	-	57	1	1736 922

★ Indicates use as required.

⊠ Indicates parts not listed in any previous parts book.

* Indicates change or addition.

Numerals in parentheses () refer to notes.

1955-58 PASSENGER CAR PARTS LIST

STEERING

CODE	PART NAME AND DESCRIPTION	NO. OF CYL.	PLYMOUTH	DODGE	DESOTO	CHRYSLER AND IMPERIAL	PER CAR	PART NUMBER
------	---------------------------	-------------	----------	-------	--------	-----------------------	---------	-------------

STANDARD STEERING

	Rubber, Green, w/Std. Trans., C75-1, C76 w/Power Pkg.	8	-	-	-	57	1	1736 923
	Plastic, Black and Beige, w/Std. Trans., C75-1, C76 w/Power Pkg.	8	-	-	-	57	1	1820 603
	Rubber, Brown, w/Std. Trans., C75-1, C76 w/Power Pkg.	8	-	-	-	57	1	1736 925
	Rubber, Black, C75-1, C76, w/Power Pkg., w/Std. Trans., LC1	8	-	-	-	57-58	1	1736 927
	Plastic, Brown and Beige, w/Auto. Trans., C75-1	8	-	-	-	57	1	1736 931
	Plastic, Green, w/Auto. Trans., C75-1	8	-	-	-	57	1	1736 929
	Plastic, Blue, w/Auto. Trans., C75-1	8	-	-	-	57	1	1736 928
	Plastic, Black and Beige, w/Auto. Trans., C75-1	8	-	-	-	57	1	1736 933
	Plastic, Turquoise, w/Auto. Trans., C75-1	8	-	-	-	57	1	1736 932
	Plastic, Black, w/Auto. Trans., C75-1	8	-	-	-	57	1	1820 172
	Plastic, Blue, LC1	8	-	-	-	58	1	⊠1828 786
	Plastic, Green, LC1	8	-	-	-	58	1	⊠1828 787
	Plastic, Brown and Beige, LC1	8	-	-	-	58	1	⊠1828 788
	Plastic, Gray, LC1	8	-	-	-	58	1	⊠1828 789
	Plastic, Turquoise, LC1	8	-	-	-	58	1	⊠1828 790
	Plastic, Black and Red, LC1	8	-	-	-	58	1	⊠1829 573
	Plastic, Black, LC1	8	-	-	-	58	1	⊠1829 574
	Plastic, Black and Gray, LC1	8	-	-	-	58	1	⊠1829 575
	Rubber, Blue, LC1	8	-	-	-	58	1	⊠1828 782
	Rubber, Green, LC1	8	-	-	-	58	1	⊠1828 783
	Rubber, Brown, LC1	8	-	-	-	58	1	⊠1828 784
	Rubber, Gray, LC1	8	-	-	-	58	1	⊠1828 785
	Rubber, Turquoise, LC1	8	-	-	-	58	1	⊠1829 611
19-30-5	COVER, Wheel, Chrome	6-8	-	55-56	-	-	1	1615 661
19-30-6	HUB, w/Std. Trans., C67, C71	8	-	-	-	55-56	1	1326 685
19-30-11	COVER, Spoke, w/Std. Trans., C67, C71	8	-	-	-	55-56	3	1139 498
19-30-13	CUP, Hub, D55, D56, D62, D63-1	6-8	55-56	55-56	-	-	1	1330 389
19-30-18	NUT, C67, C68, C71, C72, C75-1, LC1	6-8	55-58	55-58	55-58	55-58	1	852 414
19-31-0 STEERING POST BRACKET								
19-31-1	BRACKET, w/Std. Trans.	6-8	55-56	-	-	-	1	1595 908
	w/PowerFlite	6-8	55-56	-	-	-	1	1608 579
	Prime	6-8	57-58	57-58	-	-	1	1698 091
	w/Std. Trans., S23	8	-	55-56	-	-	1	1640 599
	w/PowerFlite	8	-	55-56	-	-	1	1623 144
	S25, S26, LS2, LS3, C75-1	8	-	57-58	57	-	1	1623 143
	S27, LS1	8	-	57-58	-	-	1	1698 132
	LC1	8	-	-	-	58	1	1830 824
	w/Std. Trans., C67, C71	8	-	-	-	55-56	1	1623 151
	w/PowerFlite, C67, C68, C71, C72	8	-	-	-	55-56	1	1623 147
19-31-12	ADAPTER, Bracket, w/Std. Trans.	6-8	57-58	57-58	-	-	1	1698 099
	w/Std. Trans., S25, LS2, C75-1	8	-	-	57-58	57	1	1698 147
	w/Std. Trans., S27, LS1	8	-	-	57-58	-	1	1698 718
19-31-19	SCREW, to Cap	6-8	-	56	-	-	1	1695 649
	To Cap	6-8	-	57-58	-	-	2	6008 001
	LS1, LC1	8	-	-	58	58	2	*6008 038
	To instrument panel strainer, C71, C72	8	-	-	-	56	2	1685 131
19-31-20	NUT, Bracket to Brace, w/RETAINER	6-8	-	55-56	-	-	2	*6013 000
19-31-21	PLATE, Bracket Att. C/Nut	6-8	57-58	57-58	-	-	1	1685 880
19-31-24	CAP, w/Std. Trans.	6-8	55-56	-	-	-	1	1595 910
	w/PowerFlite	6-8	55-56	-	-	-	1	1608 583
	w/Auto. Trans.	6-8	57-58	-	-	-	1	1698 093

★ Indicates use as required.

Numerals in parentheses () refer to notes.

Printed in U.S.A.

⊠ Indicates parts not listed in any previous parts book.

Prices and specifications subject to change without notice.

June 25, 1958 Supersedes Feb. 20, 1958.

* Indicates change or addition.

CODE	PART NAME AND DESCRIPTION	NO. OF CYL.	PLYMOUTH	DODGE	DESOTO	CHRYSLER AND IMPERIAL	PER CAR	PART NUMBER
------	---------------------------	-------------	----------	-------	--------	-----------------------	---------	-------------

STANDARD STEERING

	w/Std. Trans.	6-8	57-58	-	-	-	1	1698 095
	CLIP	6-8	58	-	-	-	2	*1327 986
	CAP	6-8	-	55-56	-	-	1	*1602 902
	w/Auto. Trans.	6-8	-	57-58	-	-	1	1698 103
	w/Std. Trans.	6-8	-	57-58	-	-	1	1698 107
	w/Std. Trans., S23	8	-	-	55-56	-	1	1623 140
	w/PowerFlite	8	-	-	55-56	-	1	1623 139
	w/Auto. Trans., S25, S26, LS2, LS3, C75-1.	8	-	-	57-58	57	1	1698 108
	w/Std. Trans., S25, LS2, C75-1	8	-	-	57-58	57	1	1698 170
	w/Auto. Trans., S27, LS1, LC1	8	-	-	57-58	58	1	1698 725
	w/Std. Trans., S27, LS1	8	-	-	57-58	-	1	1698 721
	w/Std. Trans., C67, C71	8	-	-	-	55-56	1	1623 153
	w/PowerFlite, C67, C68, C71, C72.	8	-	-	-	55-56	1	1623 149
19-46-O GEARSHIFT ROD OR TUBE								
19-46-3	TUBE, w/Std. Trans.	6-8	55-56	55-56	-	-	1	1617 344
	w/Std. Trans., S25, S27, LS1, LS2, C75-1, C76 w/Power Pkg.	6-8	57-58	57-58	57-58	57	1	1675 758
	w/Std. Trans., S23, C67, C71	8	-	-	55-56	55-56	1	1617 345
19-46-6	BUSHING, Tube, w/Std. Trans., S23, C67, C71	6-8	55-56	55-56	55-56	55-56	1	1142 539
	BEARING, Tube, w/Std. Trans., S23, C67, C71	6-8	55-56	55-56	55-56	55-56	2	1557 947
19-46-9	CUP, Tube Lever Spring Washer, w/Std. Trans., S25, S27, LS1, LS2, C75-1, C76 w/Power Pkg.	6-8	57-58	57-58	57-58	57	1	1673 948
19-46-10	SPRING, Rod Return, w/Std. Trans., S23, C67, C71	6-8	55-56	55-56	55-56	55-56	1	1613 108
	w/Std. Trans., S25, S27, LS1, LS2, C75-1, C76 w/Power Pkg.	6-8	57-58	57-58	57-58	57	1	1632 808
19-46-11	WASHER, Tube Lever Spring, w/Std. Trans., S25, S27, C75-1, C76 w/Power Pkg.	6-8	57	57	57	57	1	1673 947
	w/Std. Trans., LS1, LS2	6-8	58	58	58	-	1	1820 387
19-46-13	GROMMET, Tube Lever, w/Std. Trans., S23, C67, C71	6-8	55-56	55-56	55-56	55-56	1	1610 985
19-46-14	BUSHING, Tube Lever Grommet, w/Std. Trans., S23, C67, C71	6-8	55-56	55-56	55-56	55-56	1	1610 986
19-46-16	LEVER, Rod, w/Std. Trans.	6-8	55-56	-	-	-	1	1615 645
	w/Std. Trans., Upper, S25, S27, C75-1, C76 w/Power Pkg.	6-8	57	57	57	57	1	*1730 982
	w/Std. Trans., Lower, S25, S27, C75-1, C76 w/Power Pkg.	6-8	57	57	57	57	1	*1730 981
	w/Std. Trans., Upper, LS1, LS2	6-8	58	58	58	-	1	*1944 022
	w/Std. Trans., Lower, LS1, LS2	6-8	58	58	58	-	1	*1944 023
	w/Std. Trans.	6-8	-	55-56	-	-	1	1615 646
	w/Std. Trans., S23, C67, C71	8	-	-	55-56	55-56	1	1615 647
19-46-19	WASHER, Tube Lever, w/Std. Trans., S25, S27, LS1, LS2, C75-1, C76 w/Power Pkg.	6-8	57-58	57-58	57-58	57	1	1670 932
19-46-21	SEAL, Collar, w/Std. Trans., S23, C67, C71	6-8	55-56	55-56	55-56	55-56	1	1497 230
19-46-23	PIN, Tube, w/Std. Trans., S25, S27, LS1, LS2, C75-1, C76 w/Power Pkg.	6-8	57-58	57-58	57-58	57	1	1675 771
19-46-24	RETAINER, Tube Lever Pin, w/Std. Trans., S25, S27, LS1, LS2, C75-1, C76 w/Power Pkg.	6-8	57-58	57-58	57-58	57	1	1632 818
19-46-26	SEAL, Tube Bushing Support, w/Std. Trans., S25, S27, LS1, LS2, C75-1, C76 w/Power Pkg.	6-8	57-58	57-58	57-58	57	1	1730 984
19-46-32	CLAMP, Tube Bushing Support, w/Std. Trans., S25, S27, C75-1, C76 w/Power Pkg.	6-8	57	57	57	57	1	*1632 816
	w/Std. Trans., LS1, LS2	6-8	58	58	58	-	1	*1829 589

★ Indicates use as required.

☐ Indicates parts not listed in any previous parts book.

* Indicates change or addition.

Numerals in parentheses () refer to notes.

Prices and specifications subject to change without notice.

Nov. 10, 1958 Supersedes June 25, 1958.

Printed in U.S.A.

1955-58 PASSENGER CAR PARTS LIST

STEERING

CODE	PART NAME AND DESCRIPTION	NO. OF CYL.	PLYMOUTH	DODGE	DESOTO	CHRYSLER AND IMPERIAL	PER CAR	PART NUMBER
------	---------------------------	-------------	----------	-------	--------	-----------------------	---------	-------------

STANDARD STEERING

19-46-35	RETAINER, Tube Support Seal, w/Std. Trans., S25, S27, LS1, LS2, C75-1, C76 w/Power Pkg.	6-8	57-58	57-58	57-58	57	1	1738 207
19-46-41	WASHER, Rod, w/Std. Trans., S23, C67, C71	6-8	55-56	55-56	55-56	55-56	★	1615 640
19-46-42	SPACER, Rod, w/Std. Trans., S23, C67, C71	6-8	55-56	55-56	55-56	55-56	1	1614 639
19-46-55	SUPPORT, Tube Bushing, w/Std. Trans., S25, S27, C75-1, C76 w/Power Pkg.	6-8	57	57	57	57	1	*1638 206
	w/Std. Trans., LS1, LS2	6-8	58	58	58	-	1	*1829 588

19-47-0 GEARSHIFT SELECTOR ROD

19-47-2	ROD, w/Std. Trans.	6	55-56	-	-	-	1	1617 449
	w/Std. Trans.	8	55-56	-	-	-	1	1630 218
	w/Std. Trans., S23, C67, C68-300, C71, C72-300	6-8	-	55-56	-	-	1	1614 522
19-47-3	SPRING, Swivel, w/Std. Trans., S23, C67, C68-300, C71, C72-300	8	-	-	55-56	55-56	1	1618 429
19-47-4	WASHER, w/Std. Trans., C67	6-8	55	55	55	55	2	6000 106
19-47-7	SPACER, Selector, w/Std. Trans., S23, C67, C71	6-8	55-56	55-56	55-56	55-56	1	1614 646
19-47-10	SWIVEL, w/Std. Trans., S23, C67, C68-300, C71, C72-300	6-8	55-56	55-56	55-56	55-56	1	1489 623
19-47-11	CLIP, w/Std. Trans., S23, C67, C68-300, C71, C72-300	6-8	55-56	55-56	55-56	55-56	1	1137 669
19-47-14	LEVER, Selector, w/Std. Trans.	6-8	55-56	55-56	-	-	1	1616 757
	w/Std. Trans., S23, C67, C71	8	-	-	55-56	55-56	1	1616 756
19-47-15	WASHER, Lever Spring, w/Std. Trans., S23, C67, C71	6-8	55-56	55-56	55-56	55-56	2	389 070

19-48-0 GEARSHIFT CONTROL RODS

19-48-1	ROD, Front, w/Std. Trans.	6	55-56	-	-	-	1	1617 451
	Front, w/Std. Trans.	8	55-56	-	-	-	1	1630 216
	Rear, w/Std. Trans.	6	55-56	-	-	-	1	1617 450
	Rear, w/Std. Trans.	8	55-56	-	-	-	1	1630 217
	w/Std. Trans., 2nd. and High, S27, LS1, UP TO	6-8	57-58 (1)	57-58 (1)	57-58 (1)	-	1	*1731 120
	w/Std. Trans., 1st. and Reverse, S27, LS1, UP TO	6-8	57-58 (1)	57-58 (1)	57-58 (1)	-	1	*1731 121
	w/Std. Trans., 2nd. and High, S27, LS1, AFTER	6-8	58 (1)	58 (1)	58 (1)	-	1	*1829 669
	w/Std., Trans., 1st. and Reverse, S27, LS1, AFTER	6-8	58 (1)	58 (1)	58 (1)	-	1	*1829 670

NOTE 1: LP1 Eng. No. L230-48233 Det. Blt. - Ser. No. LP1N-11237 Delaware, LP2 Eng. No. LP8-191968 Det. Blt. - Ser. No. LP2N.24635 Delaware, LD1 Eng. No. L230-48233 Det. Blt. - Ser. No. LD1N-1594 Delaware, LD2 Ser. No. LD2-42957 Det. Blt. - LD2N-7276 Delaware, LD3 Ser. No. LD3N-3777 Delaware, No. 1 Job on AFTER Part Det. Blt., LS1 Ser. No. LS1-11851.

★ Indicates use as required.

Numerals in parentheses () refer to notes.

Printed in U.S.A.

☐ Indicates parts not listed in any previous parts book.

Prices and specifications subject to change without notice.

Nov. 10, 1958 Supersedes June 25, 1958.

Page 19-20

* Indicates change or addition.

CODE	PART NAME AND DESCRIPTION	NO. OF CYL.	PLYMOUTH	DODGE	DESOTO	CHRYSLER AND IMPERIAL	PER CAR	PART NUMBER
------	---------------------------	-------------	----------	-------	--------	-----------------------	---------	-------------

STANDARD STEERING

	Front, w/Std. Trans., w/Single Exhaust Pipe	6-8	-	55-56	-	-	1	1614 520
	Front, w/Std. Trans., w/Dual Exhaust Pipe, except Sub.	8	-	55-56	-	-	1	1633 193
	Rear, w/Std. Trans., w/Single Exhaust Pipe	6-8	-	55-56	-	-	1	1614 521
	Rear, w/Std. Trans., w/Dual Exhaust Pipe, except Sub.	8	-	55-56	-	-	1	1633 194
	Front, w/Std. Trans., S23, C67, C68-300, C71, C72-300	8	-	-	55-56	55-56	1	1618 431
	w/Std. Trans., 2nd and High, S25, C75-1, C76 w/Power Pkg.	8	-	-	57	57	1	*1731 122
	w/Std. Trans., Rev. and First, S25, C75-1, C76 w/Power Pkg.	8	-	-	57	57	1	*1731 123
	Rear, w/Std. Trans., S23, C67, C68-300, C71, C72-300	8	-	-	55-56	55-56	1	1618 430
	w/Std. Trans. 2nd and High LS2	8	-	-	58	-	1	E1850 517
	w/Std. Trans. 1st and Reverse. LS2	8	-	-	58	-	1	E1850 518
19-48-2	CLEVIS, Front, w/Std. Trans., S23, C67, C68-300, C71, C72-300	6-8	55-56	55-56	55-56	55-56	1	1614 591
19-48-4	CLIP, Front Clevis Pin, w/Std. Trans., S23, C67, C68-300, C71, C72-300	6-8	55-56	55-56	55-56	55-56	1	1137 669
19-48-9	SPRING, Front Clevis, w/Std. Trans., S23, C67, C68-300, C71, C72-300	6-8	55-56	55-56	55-56	55-56	1	1616 106
19-48-16	SWIVEL, w/Std. Trans., S25, S27, LS1, LS2, C75-1, C76 w/Power Pkg.	6-8	57-58	57-58	57-58	57	★	1731 118
19-48-20	WASHER, Swivel Spring, w/Std. Trans., S25, S27, LS1, LS2, C75-1, C76 w/Power Pkg.	6-8	57-58	57-58	57-58	57	★	389 070
19-48-21	WASHER, Swivel, w/Std. Trans., S25, S27, LS1, LS2, C75-1, C76 w/Power Pkg.	6-8	57-58	57-58	57-58	57	★	632 258
19-48-23	CLIP, w/Std. Trans., S23, S25, S27, LS1, LS2, C67, C68-300, C71, C72-300, C75-1, C76 w/Power Pkg.	6-8	55-58	55-58	55-58	55-57	★	1137 669

19-52-0 GEARSHIFT CONTROL BELL CRANK

19-52-2	BELL CRANK, w/Std. Trans., C67 (also specify 1-1639 954 Spring)	6-8	55	55	55	55	1	1639 957
	w/Std. Trans., S23, C68-300, C71, C72-300	6-8	56	56	56	55-56	1	1639 957
19-52-3	STUD, w/Std. Trans., P26, P28, S23, C67, C68-300, C71, C72-300	6-8	55-56	55-56	55-56	55-56	1	1142 271
	STUD, w/Std. Trans.	8	55-56	-	-	-	1	1630 219
19-52-4	WASHER, Stud, w/Std. Trans.	8	55-56	-	-	-	1	1630 220
19-52-9	BRACKET, to Frame, w/Std. Trans. w/Dual Exhaust	8	-	55-56	-	-	1	1630 373
19-52-22	SPRING, Anti-Rattle, w/Std. Trans., C67	6-8	55	55	55	55	1	958 314
	w/Std. Trans., S23, C68-300, C71, C72-300	6-8	56	56	56	55-56	1	1639 954

NOTES

★ Indicates use as required. Numerals in parentheses () refer to notes. Printed in U.S.A.
 ☐ Indicates parts not listed in any previous parts book. Prices and specifications subject to change without notice.
 * Indicates change or addition. Page 19-21 June 25, 1958 Supersedes Feb. 20, 1958.

1955-58 PASSENGER CAR PARTS LIST

STEERING

CODE	PART NAME AND DESCRIPTION	NO. OF CYL.	PLYMOUTH	DODGE	DESOTO	CHRYSLER AND IMPERIAL	PER CAR	PART NUMBER
------	---------------------------	-------------	----------	-------	--------	-----------------------	---------	-------------

POWER STEERING

NOTE: Parts indicated by Type 1 were used on P31 AFTER serial No. 16354645 also from 16354503 to 16354600 except from 16377285 to 16378453; used intermittently on LP1, LP2.
 Parts indicated by Type 2 were used on P31 UP TO serial No. 16354645 except from 16354503 to 16354600 also from 16377285 to 16378453; used intermittently on LP1, LP2.
 Where Type is not indicated parts are common to both Type 1 Constant Control Power Steering and Type 2 Coaxial Power Steering.

19-01-0 STEERING GEAR ASSEMBLY								
19-01-8	CHUCK	6-8	55-56	55-56	-	-	1	1615 669
	LC2, LC3, LY1, Type 2	6-8	57	57	57	57-58	1	*1734 081
	P31, Type 1	6-8	57-58	58	58	58	1	1733 763
	UP TO	8	-	-	55-56 (1)	55-56 (1)	1	1558 263
19-01-50	SPRING, Reaction, P31, Type 1	6-8	57-58	58	58	58	2	1822 134
19-01-51	RING, Reaction, P31, Type 1	6-8	57-58	58	58	58	2	1822 150
19-01-52	SEAL, Reaction, Upper, P31, Type 1	6-8	57-58	58	58	58	1	1822 151
	Lower, P31, Type 1	6-8	57-58	58	58	58	1	1822 149
19-01-60	HEAD, Cylinder, P31, Type 1	6-8	57-58	58	58	58	1	*1945 808
19-01-61	"O" RING, Cylinder Head Ferrule, P31, Type 1	6-8	57-58	58	58	58	1	1486 205
19-01-62	SNAP RING, Cylinder Head, P31, Type 1	6-8	57-58	58	58	58	1	1822 321
19-02-0 STEERING GEAR HOUSING								
19-02-1	PACKAGE, Housing and Worm w/PISTON, UP TO Letter "H" stamped on the Housing, P31, Type 1	6-8	57-58	58	58	58	1	1879 537
19-02-4	HOUSING	6-8	55-56	55-56	-	-	1	1610 982
	LC2, LC3, LY1, Type 2	6-8	57	57	57	57-58	1	*1734 080
	UP TO Letter "H" stamped on the Housing, Specify 1879 537 Housing Package, Part Type Code 19-02-1, P31, Type 1	6-8	57-58	58	58	58	1	---- --
	w/Letter "H" and AFTER stamped on the Housing, Type 1	6-8	58	58	58	58	1	1822 735
	8	8	-	-	55-56	55-56	1	1558 259
19-02-15	"O" RING, Housing, P31, Type 1	6-8	57-58	58	58	58	1	1316 849
	"O" RING, Housing Port, P31, Type 1	6-8	57-58	58	58	58	2	1556 385
19-02-18	WASHER, Housing to Frame Bolt	6-8	57-58	57-58	57-58	57-58	★	1639 652
19-02-20	SPACER, Frame, Inner	6	55-56	55-56	-	-	3	1615 649
	Outer	6	55-56	55-56	-	-	3	1615 650
	SPACER, Housing to Frame	6-8	55-56	55-56	55-56	55-56	5	1538 194
	6-8	6-8	57-58	57-58	57-58	57-58	5	1671 586
19-02-21	WEDGE, to Frame	6-8	55-56	55-56	55-56	55-56	1	1557 919
	6-8	6-8	57-58	57-58	57-58	57-58	1	1671 587
19-02-55	HEAD	6-8	55-56	55-56	-	-	1	1671 251
	6-8	6-8	57 (2)	57 (2)	55-57 (2)	55-57 (2)	1	1671 249
	6-8	6-8	57 (3)	57 (3)	57 (3)	57 (3)	1	1820 177
	LC2, LC3, LY1, Type 2	8	-	-	-	58	1	*1820 177
19-02-69	"O" RING, Head	6-8	55-56	55-56	-	-	2	1557 217
	HOUSING HEAD, LC2, LC3, LY1, Type 2	6-8	57	57	55-57	55-58	2	*1556 759
	CYLINDER HEAD, P31, Type 1	6-8	57-58	58	58	58	2	1733 562
19-02-75	HOUSING, Worm	6-8	55-56	55-56	-	-	1	*1673 859
	LC2, LC3, LY1, Type 2	6-8	57	57	57	57-58	1	*1820 375
	8	8	-	-	55-56	55-56	1	*1673 889

NOTE 1: S23 Ser. No. 55284311, S24 Ser. No. 50378450, C70 Ser. No. C56-1102, C71 Ser. No. W56-32230, C72 Ser. No. N56-18487, C73 Ser. No. C56-5761.

NOTE 2: All 1957 models used UP TO date 12-17-56 stenciled on housing side of flange, where upper housing bolts to lower housing.

NOTE 3: All 1957 models used AFTER date 12-17-56 stenciled on housing side of flange, where upper housing bolts to lower housing.

CODE	PART NAME AND DESCRIPTION	NO. OF CYL.	PLYMOUTH	DODGE	DESOTO	CHRYSLER AND IMPERIAL	PER CAR	PART NUMBER
------	---------------------------	-------------	----------	-------	--------	-----------------------	---------	-------------

POWER STEERING

19-02-77	SEAL, Worm Housing, LC2, LC3, LY1, Type 2	6-8	55-57	55-57	55-57	55-58	1	*1820 033
19-02-81	PLUG, Tube Housing.	8	-	-	55-56	55-56	1	1531 445
	LC2, LC3, LY1, Type 2	6-8	57	57	57	57-58	1	*1734 107
19-02-86	WASHER, Worm Housing Screw, LC2, LC3, LY1, Type 2	6-8	55-57	55-57	55-57	55-58	★	*1535 179
19-04-0 STEERING GEAR HOUSING COVER								
19-04-1	COVER	6-8	55-56	55-56	-	-	1	1537 575
		8	-	-	55-56	55-56	1	1558 250
19-04-11	SNAP RING.	6-8	55-56	55-56	-	-	1	1558 251
		8	-	-	55-56	55-56	1	1558 249
19-04-12	"O" RING	6-8	55-56	55-56	-	-	1	1537 577
		8	-	-	55-56	55-56	1	1486 204
19-14-0 STEERING GEAR COLUMN JACKET								
19-14-1	JACKET, w/Std. Trans..	6-8	55-56	55-56	-	-	1	1557 924
	w/PowerFlite	6-8	55-56	55-56	-	-	1	1612 088
	w/Std. Trans., S27	6-8	57	57	57	-	1	*1732 632
	w/Auto. Trans., S27.	6-8	57	57	57	-	1	*1732 461
	w/Auto. Trans., P31, LS1, LC1, UP TO Type 1	6-8	57-58 (1)	58 (1)	58 (1)	58 (1)	1	*1733 781
	w/Auto. Trans., LS1, LC1, AFTER, Type 1	6-8	58 (1)	58 (1)	58 (1)	58 (1)	1	*1850 543
	w/Std. Trans., UP TO, Type 1	6-8	58 (1)	-	-	-	1	*1820 607
	w/Std. Trans., AFTER, Type 1	6-8	58 (1)	-	-	-	1	*1850 548
		8	-	-	55-56	-	1	1610 992
	S25, S26, C75, C76	8	-	-	57	57	1	1732 399
	w/Auto. Trans., LS2 UP TO LS2-11347, LS3 UP TO LS3-9570, LC2 UP TO LC2-6821, LC3 UP TO LC3-7561, Type 1	8	-	-	58	58	1	1733 780
	w/Auto. Trans., LS2 AFTER LS2-11347, LS3 AFTER LS3-9570, LC2 AFTER LC2-6821, LC3 AFTER LC3-7561, Type 1	8	-	-	58	58	1	1850 544
	w/Auto. Trans., LC2, LC3, Type 2	8	-	-	-	58	1	*1732 399
		8	-	-	-	55-56	1	1558 272
	IM, LY1, Type 2	8	-	-	-	57-58	1	1732 647
	w/Auto Trans., w/Auto Pilot, LC1	8	-	-	-	58	1	1856 332
	w/Auto. Trans., w/Auto Pilot, LC2, LC3	8	-	-	-	58	1	1856 331
	w/Auto. Trans., LY1, Type 1	8	-	-	-	58	1	1850 550
19-14-4	BEARING, LC2, LC3, LY1, Type 2	6-8	55-57	55-57	55-57	55-58	1	*1488 462
	P31, Type 1	6-8	57-58	58	58	58	1	1733 658
19-14-5	SPRING, LC2, LC3, LY1, Type 2	6-8	55-57	55-57	55-57	55-58	1	*1127 165
	P31, Type 1	6-8	57-58	58	58	58	1	1829 570
19-14-7	PACKAGE, Bearing and Tube, P31, Type 1	6-8	57-58	58	58	58	1	1879 708
19-14-10	PACKAGE, Support and Insulator, Type 1	6-8	58	58	58	58	1	1879 713
19-14-13	WASHER, Support Nut, P31, Type 1	6-8	57-58	58	58	58	1	1733 588
19-14-15	SPACER, LC2, LC3, LY1, Type 2	6-8	55-57	55-57	55-57	55-58	1	*1316 772
19-14-18	"O" RING, Support, P31, Type 1	6-8	57-58	58	58	58	1	1733 602
19-14-19	NUT, Support, P31, Type 1	6-8	57-58	58	58	58	1	1733 625
19-14-33	SHIELD, Heat	6-8	55-56	-	-	-	1	1608 577
	w/Auto. Trans., S27	6-8	57	57	57	-	1	*1685 204
		6-8	-	55-56	-	-	1	1602 921
		8	-	-	55-56	-	1	1575 807
	S25, S26, LC2, LC3, LY1, Type 2	8	-	-	57	57-58	1	*1685 287
		8	-	-	-	55-56	1	1575 811

NOTE 1: LP1 Ser. No. LP1-17792 Det. Blt. - Approx. LP1N-12444 Delaware, LP2 Ser. No. LP2-54289 Det. Blt. - Approx. LP2N-12443 Delaware, LD1 Ser. No. LD1-2516 Det. Blt. - Approx. LD1N-1389 Delaware, LD2 Ser. No. LD2-22924 Det. Blt. - Approx. LD2N-5516 Delaware, LD3 Ser. No. LD3-13236 Det. Blt. - Approx. LD3N-2855 Delaware, LS1 Ser. No. LS1-6765., LC1 Ser. No. LC1-9215.

★ Indicates use as required.

Numerals in parentheses () refer to notes.

Printed in U.S.A.

☐ Indicates parts not listed in any previous parts book.

Prices and specifications subject to change without notice.

* Indicates change or addition.

1955-58 PASSENGER CAR PARTS LIST

STEERING

CODE	PART NAME AND DESCRIPTION	NO. OF CYL.	PLYMOUTH	DODGE	DESOTO	CHRYSLER AND IMPERIAL	PER CAR	PART NUMBER
------	---------------------------	-------------	----------	-------	--------	-----------------------	---------	-------------

POWER STEERING

19-14-35	CLAMP	6-8	55-58	55-58	55-58	55-58	1	1820 385
	w/BUSHING, w/Std. Trans., Type 1	6-8	58	-	-	-	1	1820 598
19-14-38	INSULATOR	6-8	55-56	-	-	-	1	1628 684
	P31, Type 1	6-8	57-58	58	58	58	1	1850 547
19-14-41	SPRING, Column Heat Shield	6-8	55-56	-	-	-	1	1609 431
	S27, Type 2	6-8	57	57	57	-	1	*1766 510
19-14-52	SUPPORT, Heat Shield, S27	6-8	57	57	57	-	1	*1766 669
	S25, S26, C75, C76, LC2, LC3, Type 2	8	-	-	57	57-58	1	*1773 007
	IM, LY1, Type 2	8	-	-	-	57-58	1	1766 698
19-14-56	INSULATOR, Heat Shield, S27	6-8	57	57	57	-	1	*1766 677
	S25, S26, C75, C76, LC2, LC3, Type 2	8	-	-	57	57-58	1	*1766 680
	IM, LY1, Type 2	8	-	-	-	57-58	1	1766 683

19-15-0 STEERING GEAR TUBE AND WORM

19-15-2	BALL PACKAGE, Worm Connector	6-8	55-58	55-58	55-58	55-58	1	1450 995
19-15-4	TUBE	6-8	55-56	55-56	-	-	1	1557 921
	S27, Type 2	6-8	57	57	57	-	1	*1732 643
	P31, LD1 UP TO Ser. No. 6004, LD2 UP TO Ser. No. 52389 Det. Blt., -7464 L. A. Blt., LD3 UP TO Ser. No. 26681 Det. Blt. -6248 L. A. Blt., LS1 UP TO Ser. No. 14643 Det. Blt. 7600 L. A. Blt., LC1 UP TO Ser. No. 17946, Type 1	6-8	57-58	58	58	58	1	*1733 783
		8	-	-	55-56	55-56	1	1557 922
	S25, S26, C75, C76, LC2, LC3, Type 2	8	-	-	57	57-58	1	*1732 644
	LS2, LS3, LC2 UP TO Ser. No. 11723, LC3 UP TO Ser. No. 12644, Type 1	8	-	-	58	58	1	1733 773
	IM, LY1, Type 2	8	-	-	-	57-58	1	1732 645
	LY1 UP TO Ser. No. 14903, Type 1	8	-	-	-	58	1	*1733 772
19-15-5	TUBE PACKAGE, LD1 AFTER Ser. No. 6004, LD2 AFTER Ser. No. 52389 Det. Blt. -7464 L. A. Blt., LD3 AFTER Ser. No. 26681 Det. Blt. -6248 L. A. Blt., LS1 AFTER Ser. No. 14643, Det. Blt. -7600 L. A. Blt., LC1 AFTER Ser. No. 17946, Type 1	6-8	-	58	58	58	1	*1879 716
	LC2 AFTER Ser. No. 11723, LC3 AFTER Ser. No. 12644, Type 1	8	-	-	-	58	1	*1879 715
	LY1 AFTER Ser. No. 14903, Type 1	8	-	-	-	58	1	1879 714
19-15-6	STOP, Tube, P31, Type 1	6-8	57-58	58	58	58	1	1829 594
19-15-10	INSULATOR, Tube LC2, LC3, LY1, Type 2	6-8	55-57	55-57	55-57	55-58	1	*1319 797
	P31, LD1 UP TO Ser. No. 6004, LD2 UP TO Ser. No. 52389 Det. Blt. -7464 L. A. Blt., LD3 UP TO Ser. No. 26681, Det. Blt. -6248 L. A. Blt., LS1 UP TO Ser. No. 14643, Det. Blt. -7600 L. A. Blt., LS2, LS3, LC1 UP TO Ser. No. 17502, LC2 UP TO Ser. No. 11246, LC3 UP TO Ser. No. 12659, LY1 UP TO Ser. No. 14378, Type 1	6-8	57-58	58	58	58	1	*1733 778
	LD1 AFTER Ser. No. 6004, LD2 AFTER Ser. No. 52389 Det. Blt. -7464 L. A. Blt., LD3 AFTER Ser. No. 26681 Det. Blt. -6248 L. A. Blt., LS1 AFTER Ser. No. 14643 Det. Blt. -7600 L. A. Blt., LC1 AFTER Ser. No. 17502, LC2 AFTER Ser. No. 11246, LC3 AFTER Ser. No. 12659, LY1 AFTER Ser. No. 14378, Type 1	6-8	-	58	58	58	1	*1822 668

★ Indicates use as required.

Numerals in parentheses () refer to notes.

Printed in U.S.A.

☐ Indicates parts not listed in any previous parts book.

Prices and specifications subject to change without notice.

Nov. 10, 1958 Supersedes June 25, 1958.

* Indicates change or addition.

CODE	PART NAME AND DESCRIPTION	NO. OF CYL.	PLYMOUTH	DODGE	DESOTO	CHRYSLER AND IMPERIAL	PER CAR	PART NUMBER
------	---------------------------	-------------	----------	-------	--------	-----------------------	---------	-------------

POWER STEERING

19-15-11	INSERT, Tube Insulator, P31, LD1 UP TO Ser. No. 6004, LD2 UP TO Ser. No. 52389 Det. Blt. - 7464 L.A. Blt., LD3 UP TO Ser. No. 26681 Det. Blt., - 6248 L.A. Blt., LS1 UP TO Ser. No. 14643 Det. Blt. - 7600 L.A. Blt., LS2, LS3, LC1 UP TO Ser. No. 17502, LC2 UP TO Ser. No. 11246, LC3 UP TO Ser. No. 12659, LY1 UP TO Ser. No. 14378, Type 1	6-8	57-58	58	58	58	2	*1733 769
	LD1 AFTER Ser. No. 6004, LD2 AFTER Ser. No. 52389 Det. Blt. - 7464 L.A. Blt., LD3 AFTER Ser. No. 26681 Det. Blt. - 6248 L.A. Blt., LS1 AFTER Ser. No. 14643 Det. Blt. - 7600 L.A. Blt., LC1 AFTER Ser. No. 17502, LC2 AFTER Ser. No. 11246, LC3 AFTER Ser. No. 12659, LY1 AFTER Ser. No. 14378, Type 1	6-8	-	58	58	58	2	*1822 667
19-15-13	SPRING, Tube Insulator, LC2, LC3, LY1, Type 2	6-8	55-57	55-57	55-57	55-58	1	*1329 953
19-15-15	SNAP RING, Tube	6-8	55-58	55-58	55-58	55-58	1	1316 764
19-15-20	HORN GROUND, Tube, P31, Type 1	6-8	57-58	58	58	58	1	1856 336
19-15-23	COUPLING, Worm, LC2, LC3, LY1, Type 2	6-8	55-57	55-57	55-57	55-58	1	*1483 471
	P31, Type 1	6-8	57-58	58	58	58	1	⊠1943 770
19-15-29	CONNECTOR, Worm	6-8	55	55	-	-	1	1614 627
	8	-	-	55	55	55	1	1614 631
	CONNECTOR PACKAGE, Worm, LC2, LC3, LY1, Type 2	6-8	55-57	55-57	55-57	55-58	1	⊠1879 490
19-15-30	NUT, Worm Connector, LC2, LC3, LY1, Type 2	6-8	55-57	55-57	55-57	55-58	1	*1488 099
19-15-31	LOCK, Worm Connector Nut, LC2, LC3, LY1, Type 2	6-8	55-57	55-57	55-57	55-58	1	*1488 100
19-15-32	GUIDE, Worm Connector Ball	6-8	55	55	-	-	2	1537 645
	LC2, LC3, LY1, Type 2	6-8	56-57	56-57	56-57 (1)	56-58 (1)	2	*1630 191
	8	-	-	55	55	55	2	1558 256
	8	-	-	56 (2)	56 (2)	56 (2)	2	1615 201
19-15-33	CLAMP, Worm Connector Ball Guide, LC2, LC3, LY1, Type 2	6-8	55-57	55-57	56-57	56-58	1	*1531 521
	8	-	-	55	55	55	1	1558 255
19-15-34	STUD, Worm Connector Ball Guide Clamp, LC2, LC3, LY1, Type 2	6-8	57	57	57	57-58	2	*1731 106
19-15-38	WORM, w/PISTON, UP TO Letter "H" stamped on the Housing, specify 1879 537 Housing Package, Part Type Code 19-02-1, P31, Type 1	6-8	57-58	58	58	58	1	----
	WORM, w/PISTON, w/Letter "H" and AFTER stamped on the Housing, Type 1	6-8	58	58	58	58	1	*1822 736
19-15-49	WASHER, Worm Coupling Screw, LC2, LC3, LY1, Type 2	6-8	55-57	55-57	55-57	55-58	1	*1483 394
19-15-60	CAGE and ROLLER, Worm Thrust Bearing	6-8	55-56	55-56	55-56	55-56	2	640 086
	BEARING, Thrust, LC2, LC3, LY1, Type 2	6-8	56-57	56-57	56-57	56-58	2	*1675 159
	Worm, LC2, LC3, LY1, Type 2	6-8	56-57	56-57	56-57	56-58	1	*1675 163
	Worm, LC2, LC3, LY1, Type 2	6-8	56-57	56-57	56-57	56-58	1	*1675 162
	Thrust P31, Type 1	6-8	57-58	58	58	58	2	1822 158
19-15-63	CUP, Worm Bearing, Outer, except C70, C73	6-8	55-56	55-56	55-56	55-56	2	1532 737
	Outer, C70	8	-	-	-	55	2	1532 737
	Outer, C70, C73, UP TO C56-1102	8	-	-	-	56	2	1532 737
	Inner, except C70, C73	6-8	55-56	55-56	55-56	55-56	2	1532 736
	Inner, C70	8	-	-	-	55	2	1532 736
	Inner, C70, C73, UP TO C67-1102	8	-	-	-	56	2	1532 736

NOTE 1: S23, S24, C70, C71, C72, C73, used AFTER date 10-19-55 stenciled on housing side of flange, where upper housing bolts to lower housing.

NOTE 2: S23, S24, C70, C71, C72, C73, used UP TO date 10-19-55 stenciled on housing side of flange, where upper housing bolts to lower housing.

★ Indicates use as required.

Numerals in parentheses () refer to notes.

Printed in U.S.A.

⊠ Indicates parts not listed in any previous parts book.

Prices and specifications subject to change without notice.

* Indicates change or addition.

1955-58 PASSENGER CAR PARTS LIST

STEERING

CODE	PART NAME AND DESCRIPTION	NO. OF CYL.	PLYMOUTH	DODGE	DESOTO	CHRYSLER AND IMPERIAL	PER CAR	PART NUMBER
------	---------------------------	-------------	----------	-------	--------	-----------------------	---------	-------------

POWER STEERING

	RACE, Worm Thrust Bearing, LC2, LC3, LY1 Type 2	6-8	56-57	56-57	56-57	56-58	4	*1675 158
	Lower	6-8	56	56	56	56	1	1732 381
	Thrust Bearing, Outer, P31, Type 1	6-8	57-58	58	58	58	1	1822 156
	Inner, P31, Type 1	6-8	57-58	58	58	58	1	1856 292
19-15-65	NUT, Worm, LC2, LC3, LY1, Type 2	6-8	56-57 (8)	56-57 (8)	56-57 (8)	56-58 (8)	1	*1673 971
	Thrust Bearing, P31, Type 1	6-8	57-58	58	58	58	1	*1822 157
19-15-66	WASHER, Worm Nut Lock	6-8	55-56 (3)	55-56 (3)	55-56 (3)	55-56 (3)	1	1537 559
19-15-68	WASHER, Worm Bearing	6-8	55-56 (3)	55-56 (3)	55-56 (3)	55-56 (3)	1	1483 379
19-15-69	SPACER, Worm Bearing, LC2, LC3, LY1, Type 2	6-8	56-57	56-57	56-57	56-58	2	*1675 160
	w/Center RACE, w/1733 725 Lever, P31, Type 1	6-8	57-58	58	58	58	1	*1733 554
	w/Center RACE, w/1822 380 Lever, Type 1	6-8	58	58	58	58	1	*1822 390
19-19-0 STEERING GEAR SHAFT AND ROLLER TOOTH ASSEMBLY								
19-19-4	SHAFT	6-8	55 (1)	55 (1)	-	-	1	1557 218
		6-8	55-56 (2)	55-56 (2)	-	-	1	1671 256
	LC2, LC3, LY1, Type 2	6-8	57	57	57	57-58	1	*1671 590
	P31, Type 1	6-8	57-58	58	58	58	1	1733 577
		8	-	-	55-56	55-56	1	1671 255
19-19-5	RING, Oil Seal Lock, LC2, LC3, LY1, Type 2	6-8	55-57	55-57	55-57	55-58	1	*1554 881
	SNAP RING, Oil Seal, P31, Type 1	6-8	57-58	58	58	58	1	1670 357
	C69, C70, C73	8	-	-	-	55-56	1	1316 862
19-19-7	SCREW, Adjusting, LC2, LC3, LY1, Type 2	6-8	55-57	55-57	55-57	55-58	1	*1537 590
	P31, Type 1	6-8	57-58	58	58	58	1	1675 268
19-19-9	NUT, Adjusting Screw, P31, Type 1	6-8	57-58	58	58	58	1	1822 204
19-19-11	"O" RING, Adjusting Screw, LC2, LC3, LY1, Type 2	6-8	55-57	55-57	55-57	55-58	1	*1329 971
19-19-12	SNAP RING, Adjusting Screw Thrust Washer, LC2, LC3, LY1, Type 2	6-8	55-57	55-57	57	57-58	1	*1316 862
19-19-19	BEARING, Housing Shaft	6-8	55-56	55-56	-	-	2	1531 500
		6-8	57 (5)	57 (5)	57 (5)	57 (5)	2	1820 611
		6-8	57-58 (6)	57-58 (6)	57-58 (6)	57-58 (6)	2	1734 078
		6-8	-	-	55-56	55-56	1	1531 500
19-19-24	COVER, w/ADAPTER (also specify 2-1557 217 "O" Ring)	6-8	55 (7)	55 (7)	-	-	1	1636 072
		6-8	55-56 (4)	55-56 (4)	-	-	1	1636 072
	LC2, LC3, LY1, Type 2	6-8	57	57	57	57-58	1	*1734 076
	w/BEARING, LC2, LC3, LY1, Type 2	6-8	57	57	57	57-58	1	*1538 686
	P31, Type 1	6-8	57-58	58	58	58	1	1733 604
		8	-	-	55-56	55-56	1	1558 261
19-19-26	"O" RING, Shaft Cover	6-8	55 (7)	55 (7)	-	-	1	1537 581
		6-8	55-56 (4)	55-56 (4)	-	-	1	1557 217
	LC2, LC3, LY1, Type 2	6-8	57	57	57	57-58	1	*1734 077
	P31, Type 1	6-8	57-58	58	58	58	1	1733 615

NOTE 1: P26, P27, D55, D56 used UP TO date 4-13-55 stenciled on housing side of flange, where upper housing bolts to lower housing.

NOTE 2: P26, P27, D55, D56 used AFTER date 4-13-55 stenciled on housing side of flange, where upper housing bolts to lower housing.

NOTE 3: All 1956 Models used UP TO date 12-15-55 stenciled on housing side of flange, where upper housing bolts to lower housing.

NOTE 4: P26, P27, D55, D56 used AFTER date 4-27-55 stenciled on housing side of flange, where upper housing bolts to lower housing.

NOTE 5: All 1957 models used UP TO date 10-30-56 stenciled on housing side of flange, where upper housing bolts to lower housing.

NOTE 6: All 1957 models used AFTER date 10-30-56 stenciled on housing side of flange, where upper housing bolts to lower housing.

NOTE 7: P26, P27, D55, D56 used UP TO date 4-27-55 stenciled on housing side of flange, where upper housing bolts to lower housing.

NOTE 8: All 1956 Models used AFTER date 12-15-55 stenciled on housing side of flange, where upper housing bolts to lower housing.

* Indicates use as required.

Numerals in parentheses () refer to notes.

Printed in U.S.A.

Indicates parts not listed in any previous parts book.

Prices and specifications subject to change without notice.

10 1958 Supersedes June 25, 1958.

Page 19-26

* Indicates change or addition.

CODE	PART NAME AND DESCRIPTION	NO. OF CYL.	PLYMOUTH	DODGE	DESOTO	CHRYSLER AND IMPERIAL	PER CAR	PART NUMBER
------	---------------------------	-------------	----------	-------	--------	-----------------------	---------	-------------

POWER STEERING

19-19-28	GASKET, Cover	8	-	-	55-56	55-56	1	1558 254
19-19-29	OIL SEAL, Cover Screw, LC2, LC3, LY1, Type 2	6-8	57	57	55-57	55-58	2	* 686 626
19-19-30	WASHER, Cover Screw, LC2, LC3, LY1, Type 2	6-8	57	57	55-57	55-58	★	*1535 179
	Reaction Seal, Upper, P31, Type 1	6-8	57-58	58	58	58	1	1733 790
19-19-31	SNAP RING, Cover	6-8	55-56	55-56	-	-	1	1537 587
19-19-32	NUT, Cover, P31, Type 1	6-8	57-58	58	58	58	1	1733 627
19-19-35	OIL SEAL	6-8	55-56 (2)	55-56 (2)	55-56 (2)	55-56 (2)	1	1484 523
		6-8	56-58 (1)	56-58 (1)	56-58 (1)	56-58 (1)	1	1730 985
	SEAL, Adjusting Screw, P31, Type 1	6-8	57-58	58	58	58	1	1822 203
	OIL SEAL, Worm Shaft, Upper, P31, Type 1	6-8	57-58	58	58	58	1	1733 603
19-19-36	RETAINER, Oil Seal, P31, Type 1	6-8	57-58	58	58	58	1	1670 356
19-19-40	WASHER, Adjusting Screw Thrust, 9/16" I.D., 55/64" O.D. C69, C70, C73, LC2, LC3, LY1, Type 2	6-8	55-57	55-57	57	55-58	1	*1329 092
	Lower, Solid, 13/16" O.D.	6-8	55-56	55-56	-	-	1	1531 478
	Solid, 13/16" O.D., LC2, LC3, LY1, Type 2	6-8	57	57	55-57	55-58	1	*1531 478
	P31, Type 1	6-8	57-58	58	58	58	1	1675 271
19-19-70	SEAL, Worm Shaft Inner, P31, Type 1	6-8	57-58	58	58	58	1	1822 324
19-19-71	RING, Worm Shaft Inner Seal, P31, Type 1	6-8	57-58	58	58	58	1	1822 329
19-19-72	RETAINER, Worm Shaft Seal, P31, Type 1	6-8	57-58	58	58	58	1	1822 320

19-27-0 STEERING GEAR ARM AND IDLER ARM

19-27-2	ARM, Linkage Gear	6	55-56	55-56	-	-	1	1611 786
		8	55-56	55-56	-	-	1	1611 207
	S27, Type 2	6-8	57	57	57	-	1	*1673 006
	P31, LS1, LC1, Type 1	6-8	57-58	58	58	58	1	1731 414
		8	-	-	55-56	55-56	1	1558 811
	S25, S26, LC2, LC3, LY1, Type 2	8	-	-	57	57-58	1	*1672 985
	LS2, LS3, LC2, LC3, LY1, Type 1	8	-	-	58	58	1	1731 415
19-27-8	NUT, Arm	6-8	55-58	55-58	55-58	55-58	1	1392 770
19-27-9	WASHER, Arm Nut Lock	6-8	55-58	55-58	55-58	55-58	1	52 855
19-27-31	ARM, Idler	8	55-56	55-56	-	-	1	1611 209
	S27, LS1, LC1	6-8	57-58	57-58	57-58	58	1	1734 335
		8	-	-	55-56	55-56	1	1558 793
	S25, S26, LS2, LS3, LC2, LC3, LY1	8	-	-	57-58	57-58	1	1734 330
19-27-33	BRACKET, Idler Arm	8	55-56	55-56	-	-	1	1611 211
		8	-	-	55-56	55-56	1	1556 306
19-27-34	BUSHING, Idler Arm	8	55-56	55-56	-	-	2	1634 544
	Lower	8	-	-	55-56	55-56	1	1634 544
	Upper	8	-	-	55-56	55-56	1	1556 304
19-27-40	SEAL, Idler Arm Dust	8	55-56	55-56	-	-	2	1535 115
	Upper	8	-	-	55-56	55-56	1	1556 305
	Lower	8	-	-	55-56	55-56	1	1535 115
19-27-45	BOLT, Linkage, Idler Arm	6-8	57-58	57-58	57-58	57-58	1	1734 326
19-27-50	LINK, Center	8	55-56	55-56	-	-	1	1615 151
	S27, LS1, LC1	6-8	57-58	57-58	57-58	58	1	1673 008
		8	-	-	55-56	55-56	1	1615 149
	S25, S26, LS2, LS3, LC2, LC3, LY1	8	-	-	57-58	57-58	1	1672 980
19-27-55	SEAL, Center Link Dust	8	55-56	55-56	-	-	2	1141 201
		6-8	57-58	57-58	57-58	57-58	2	1670 299
		8	-	-	55-56	55-56	1	1322 964

NOTE 1: All 1956 models used AFTER date 4-5-56 stenciled on housing side of flange, where upper housing bolts to lower housing.

NOTE 2: All 1956 models used UP TO date 4-5-56 stenciled on housing side of flange. where upper housing bolts to lower housing.

★ Indicates use as required.

Numerals in parentheses () refer to notes.

Printed in U.S.A.

☐ Indicates parts not listed in any previous parts book.

Prices and specifications subject to change without notice.

* Indicates change or addition.

CODE	PART NAME AND DESCRIPTION	NO. OF CYL.	PLYMOUTH	DODGE	DESOTO	CHRYSLER AND IMPERIAL	PER CAR	PART NUMBER
------	---------------------------	-------------	----------	-------	--------	-----------------------	---------	-------------

POWER STEERING

19-30-0 STEERING WHEEL

19-30-4	WHEEL, Plastic, Beige, w/1631 102 Ring, UP TO	6-8	55 (3)	-	-	-	1	1635 253
	Plastic, Beige, AFTER	6-8	55 (3)	-	-	-	1	1635 253
	Rubber, Beige	6-8	55-56	-	-	-	1	1615 652
	Rubber, Gray	6-8	55	-	-	-	1	1670 184
	Rubber, Blue	6-8	56	-	-	-	1	1670 183
	Rubber, Gray	6-8	56	-	-	-	1	1670 184
	Rubber, Cream	6-8	56	-	-	-	1	1670 185
	Rubber, Turquoise	6-8	56	-	-	-	1	1670 187
	Rubber, Red	6-8	56	-	-	-	1	1670 188
	Rubber, White	6-8	56	-	-	-	1	1670 189
	Plastic, Black and White	6-8	57-58	-	-	-	1	1730 963
	Rubber, Blue	6-8	57	-	-	-	1	1673 970
	Rubber, Green	6-8	57	-	-	-	1	1736 959
	Rubber, Brown	6-8	57	-	-	-	1	1736 960
	Rubber, Black	6-8	57	-	-	-	1	1736 961
	Rubber, Gold	6-8	57	-	-	-	1	1736 963
	Plastic, White and Brown, P31 Fury, LP2 Fury	8	57-58	-	-	-	1	1820 604
	Rubber, White	6-8	58	-	-	-	1	1828 762
	Rubber, Blue	6-8	58	-	-	-	1	1828 763
	Rubber, Green	6-8	58	-	-	-	1	1828 764
	Rubber, Red	6-8	58	-	-	-	1	1828 765
	Rubber, Beige	6-8	58	-	-	-	1	1820 041
	Plastic, White and Green	6-8	58	-	-	-	1	1829 591
	Plastic, White and Blue	6-8	58	-	-	-	1	1829 592
	Plastic, Black and Red	6-8	58	-	-	-	1	1829 593
	Plastic, White and Black, w/1637 492 Ring, UP TO	6-8	-	55 (1)	-	-	1	1639 646
	Plastic, White and Black, AFTER	6-8	-	55-56 (1)	-	-	1	1639 646
	Plastic, Ivory and Green, w/1637 492 Ring, UP TO	6-8	-	55 (1)	-	-	1	1637 484
	Plastic, Ivory and Green, AFTER	6-8	-	55 (1)	-	-	1	1637 484
	Plastic, Ivory and Blue, w/1637 492 Ring, UP TO	6-8	-	55 (1)	-	-	1	1637 485
	Plastic, Ivory and Blue, AFTER	6-8	-	55 (1)	-	-	1	1637 485
	Rubber, Black, w/1637 492 Ring, UP TO	6-8	-	55 (1)	-	-	1	1637 489
	Rubber, Black, AFTER	6-8	-	55-56 (1)	-	-	1	1637 489
	Rubber, Blue, w/1637 492 Ring, UP TO	6-8	-	55 (1)	-	-	1	1637 490
	Rubber, Blue, AFTER	6-8	-	55 (1)	-	-	1	1637 490
	Rubber, Green, w/1637 492 Ring, UP TO	6-8	-	55 (1)	-	-	1	1637 491
	Rubber, Green, AFTER	6-8	-	55 (1)	-	-	1	1637 491
	Plastic, White and Blue	6-8	-	56	-	-	1	1639 644
	Plastic, White and Green	6-8	-	56	-	-	1	1639 645
	Rubber, Blue	6-8	-	56	-	-	1	1639 642
	Rubber, Green	6-8	-	56	-	-	1	1639 643
	Plastic, Black and Silver	6-8	-	57	-	-	1	1675 721
	Plastic, Black and Gold	6-8	-	57	-	-	1	1736 941
	Plastic, Blue	6-8	-	57	-	-	1	1736 939
	Plastic, Green, UP TO	6-8	-	57 (2)	-	-	1	1736 940
	Plastic, Green, AFTER	6-8	-	57 (2)	-	-	1	1820 180
	Rubber, Blue	6-8	-	57	-	-	1	1675 725
	Rubber, Green	6-8	-	57	-	-	1	1736 937
	Rubber, Black	6-8	-	57-58	-	-	1	1736 938
	Rubber, Blue	6-8	-	58	-	-	1	1828 571
	Rubber, Green	6-8	-	58	-	-	1	1828 572
	Rubber, Tan	6-8	-	58	-	-	1	1828 573

NOTE 1: D55 Approx. Ser. No. 34871456 Det. Blt. - 42522144 L. A. Blt.
D56 Approx. Ser. No. 32209087 Det. Blt. - 48016123 L. A. Blt.

NOTE 2: D66 Ser. No. 35213103, D67 Ser. No. 37273386, D70 Ser. No. 38004720, D71 Ser. No. 38535461,
D72 Ser. No. 32264294.

NOTE 3: P26 Ser. No. 14050878, P27 Ser. No. 15816531.

★ Indicates use as required.

Numerals in parentheses () refer to notes.

Printed in U.S.A.

⊠ Indicates parts not listed in any previous parts book.

Prices and specifications subject to change without notice.

* Indicates change or addition.

1955-58 PASSENGER CAR PARTS LIST

STEERING

CODE	PART NAME AND DESCRIPTION	NO. OF CYL.	PLYMOUTH	DODGE	DESOTO	CHRYSLER AND IMPERIAL	PER CAR	PART NUMBER
------	---------------------------	-------------	----------	-------	--------	-----------------------	---------	-------------

POWER STEERING

	Plastic, Blue	6-8	-	58	-	-	1	⊠1828 574
	Plastic, Green	6-8	-	58	-	-	1	⊠1828 575
	Plastic, Beige and Tan	6-8	-	58	-	-	1	⊠1828 576
	Plastic, Black and Ivory	6-8	-	58	-	-	1	⊠1828 577
	Plastic, Ivory and Copper Pearl, LD3	8	-	58	-	-	1	⊠1856 337
	Plastic, Ivory and Black	8	-	-	55-56	-	1	1616 765
	Plastic, Ivory and Blue	8	-	-	55	-	1	1618 594
	Plastic, Ivory and Green	8	-	-	55	-	1	1618 595
	Plastic, Coral and Black	8	-	-	55	-	1	1618 596
	Rubber, Green	8	-	-	55	-	1	1614 611
	Rubber, Blue	8	-	-	55	-	1	1618 592
	Rubber, Ivory	8	-	-	55-56	-	1	1618 593
	Plastic, Blue	8	-	-	56	-	1	1670 197
	Plastic, Green	8	-	-	56	-	1	1670 198
	Plastic, White & Gold, S24	8	-	-	56	-	1	1732 382
	Rubber, Blue	8	-	-	56	-	1	1670 194
	Rubber, Green	8	-	-	56	-	1	1670 195
	Plastic, Gray and Beige, S25, S26	8	-	-	57	-	1	1738 181
	Plastic, Gray, S25, S26	8	-	-	57	-	1	1738 177
	Plastic, Green, S25, S26	8	-	-	57	-	1	1738 176
	Plastic, Blue, S25, S26	8	-	-	57	-	1	1730 969
	Rubber, Gray, S25	8	-	-	57	-	1	1738 175
	Rubber, Green, S25	8	-	-	57	-	1	1738 174
	Rubber, Blue, S25	8	-	-	57	-	1	1732 640
	Plastic, Gray and Buff, S26 Adventurer	8	-	-	57	-	1	1820 523
	Rubber, Black, S27, LS1, LC1	8	-	-	57-58	58	1	*1736 927
	Rubber, Blue, S27	8	-	-	57	-	1	1738 178
	Rubber, Green, S27	8	-	-	58	-	1	1738 179
	Plastic, Green, S27	8	-	-	57	-	1	1820 179
	Plastic, Black and Beige, S27	8	-	-	57	-	1	1820 603
	Plastic, Blue, S27	8	-	-	57	-	1	1738 166
	Plastic, Black and Silver, S27	8	-	-	57	-	1	1738 165
	Plastic, Blue, LS1	8	-	-	58	-	1	⊠1828 774
	Plastic, Black and Tan, LS1	8	-	-	58	-	1	⊠1828 776
	Plastic, Green, LS1	8	-	-	58	-	1	⊠1828 775
	Plastic, Ivory and Black, LS1	8	-	-	58	-	1	⊠1828 777
	Rubber, Blue, LS1	8	-	-	58	-	1	⊠1828 766
	Rubber, Green, LS1	8	-	-	58	-	1	⊠1828 767
	Rubber, Silver Gray, LS2	8	-	-	58	-	1	⊠1829 583
	Rubber, Blue, w/Auto. Trans., LS2	8	-	-	58	-	1	⊠1828 770
	Rubber, Green, w/Auto. Trans., LS2	8	-	-	58	-	1	⊠1828 771
	Rubber, Gray, w/Auto. Trans., LS2	8	-	-	58	-	1	⊠1828 772
	Rubber, Turquoise, w/Auto. Trans., LS2	8	-	-	58	-	1	⊠1828 773
	Plastic, Gray and Blue, w/Auto. Trans., LS2, LS3	8	-	-	58	-	1	⊠1828 778
	Plastic, Gray and Green, w/Auto. Trans., LS2, LS3	8	-	-	58	-	1	⊠1828 779
	Plastic, Gray, w/Auto. Trans., LS2, LS3	8	-	-	58	-	1	⊠1828 780
	Plastic, Gray and Turquoise, w/Auto. Trans., LS2, LS3	8	-	-	58	-	1	⊠1828 781
	Plastic, Gray and Blue, w/Std. Trans., LS2	8	-	-	58	-	1	⊠1828 806
	Plastic, Gray and Green, w/Std. Trans., LS2	8	-	-	58	-	1	⊠1828 807
	Plastic, Gray, w/Std. Trans., LS2	8	-	-	58	-	1	⊠1828 808
	Plastic, Gray and Turquoise, w/Std. Trans., LS2	8	-	-	58	-	1	⊠1828 809
	Plastic, White and Gold, LS3 Adventurer	8	-	-	58	-	1	⊠1850 516
	Plastic, Green, C67, Die Cast Insert, C68, C69, C70	8	-	-	-	55	1	1613 107

★ Indicates use as required. Numerals in parentheses () refer to notes. Printed in U.S.A.
 ⊠ Indicates parts not listed in any previous parts book. Prices and specifications subject to change without notice.
 June 25, 1958 Supersedes Feb. 20, 1958. Page 19-28 * Indicates change or addition.

CODE	PART NAME AND DESCRIPTION	NO. OF CYL.	PLYMOUTH	DODGE	DESOTO	CHRYSLER AND IMPERIAL	PER CAR	PART NUMBER
	POWER STEERING							
	Plastic, Blue, C67 Die Cast Insert, C68, C69, C70	8	-	-	-	55	1	1618 476
	Plastic, White and Gold, C67 Die Cast Insert, C68, C69, C70	8	-	-	-	55	1	1618 481
	Plastic, White and Blue, C67 Die Cast Insert, C68, C69, C70	8	-	-	-	55	1	1618 480
	Plastic, Black and Red, C67 Die Cast Insert, C68, C69, C70	8	-	-	-	55	1	1618 478
	Plastic, Black, C67, C71, Die Cast Insert, C68, C70	8	-	-	-	55-56	1	1631 119
	Plastic, Green, C67	8	-	-	-	55	1	1613 092
	Plastic, Blue, C67	8	-	-	-	55	1	1618 466
	Plastic, Black, C71	8	-	-	-	55-56	1	1618 467
	Plastic, Black and Beige, C68-300, C72-300	8	-	-	-	55-56	1	1637 500
	Plastic, Gray, C67 Die Cast Insert, C68, C69, C70	8	-	-	-	55	1	1618 475
	Plastic, White and Green, C67 Die Cast Insert, C68, C69, C70	8	-	-	-	55	1	1618 479
	Plastic, Beige and Orange, C67 Die Cast Insert, C68	8	-	-	-	55	1	1631 118
	Plastic, Black, C70	8	-	-	-	56	1	1631 119
	Plastic, Blue, C71	8	-	-	-	56	1	1670 204
	Plastic, Green, C71	8	-	-	-	56	1	1670 205
	Plastic, Gray, C71	8	-	-	-	56	1	1670 206
	Plastic, Brown, C71	8	-	-	-	56	1	1670 207
	Plastic, Blue, C71 Die Cast Insert, C72, C73	8	-	-	-	56	1	1670 213
	Plastic, Green, C71 Die Cast Insert, C72, C73	8	-	-	-	56	1	1670 214
	Plastic, Gray and White, C71 Die Cast Insert, C72, C73	8	-	-	-	56	1	1670 215
	Plastic, Black and White, C71 Die Cast Insert, C72, C73	8	-	-	-	56	1	1670 217
	Plastic, Brown and Beige, C71 Die Cast Insert, C72, C73	8	-	-	-	56	1	1670 216
	Plastic, Black and Copper, C71 Die Cast Insert	8	-	-	-	56	1	1736 942
	Rubber, Blue, C75	8	-	-	-	57	1	1732 638
	Rubber, Blue, C75	8	-	-	-	57	1	1736 916
	Rubber, Green, C75	8	-	-	-	57	1	1736 917
	Rubber, Black, C75	8	-	-	-	57	1	1736 921
	Plastic, Brown and Beige, C75, C76	8	-	-	-	57	1	1736 931
	Plastic, Green, C75, C76	8	-	-	-	57	1	1736 929
	Plastic, Blue, C75, C76	8	-	-	-	57	1	1736 928
	Plastic, Black and Beige, C75, C76	8	-	-	-	57	1	1736 933
	Plastic, Turquoise, C75, C76	8	-	-	-	57	1	1736 932
	Plastic, Black, C75, C76, LC2, LC3	8	-	-	-	57-58	1	1820 172
	Plastic, Black, IM	8	-	-	-	57	1	1828 805
	Plastic, Beige and Brown, IM	8	-	-	-	57	1	1736 950
	Plastic, Gray, IM	8	-	-	-	57	1	1736 949
	Plastic, Green, IM	8	-	-	-	57	1	1736 948
	Plastic, Blue, IM	8	-	-	-	57	1	1730 980
	Plastic, Blue, LC1	8	-	-	-	58	1	⊠1828 786
	Plastic, Green, LC1	8	-	-	-	58	1	⊠1828 787
	Plastic, Brown and Beige, LC1	8	-	-	-	58	1	⊠1828 788
	Plastic, Gray, LC1	8	-	-	-	58	1	⊠1828 789
	Plastic, Turquoise, LC1	8	-	-	-	58	1	⊠1828 790
	Plastic, Black and Red, LC1	8	-	-	-	58	1	⊠1829 573
	Plastic, Black, LC1	8	-	-	-	58	1	⊠1829 574
	Plastic, Black and Gray, LC1	8	-	-	-	58	1	*1829 575
	Rubber, Blue, LC1	8	-	-	-	58	1	⊠1828 782

★ Indicates use as required. Numerals in parentheses () refer to notes. Printed in U.S.A.
 ⊠ Indicates parts not listed in any previous parts book. Prices and specifications subject to change without notice.
 * Indicates change or addition. Page 19-29 June 25, 1958 Supersedes Feb. 20, 1958.

1955-58 PASSENGER CAR PARTS LIST

STEERING

CODE	PART NAME AND DESCRIPTION	NO. OF CYL.	PLYMOUTH	DODGE	DESOTO	CHRYSLER AND IMPERIAL	PER CAR	PART NUMBER
POWER STEERING								
	Rubber, Green, LC1	8	-	-	-	58	1	⊠1828 783
	Rubber, Brown, LC1	8	-	-	-	58	1	⊠1828 784
	Rubber, Gray, LC1	8	-	-	-	58	1	⊠1828 785
	Rubber, Turquoise, LC1	8	-	-	-	58	1	⊠1829 611
	Plastic, Blue, LC2, LC3	8	-	-	-	58	1	⊠1828 791
	Plastic, Green, LC2, LC3	8	-	-	-	58	1	⊠1828 792
	Plastic, Brown and Beige, LC2, LC3	8	-	-	-	58	1	⊠1828 793
	Plastic, Gray, LC2, LC3	8	-	-	-	58	1	⊠1828 794
	Plastic, Turquoise, LC2, LC3	8	-	-	-	58	1	⊠1828 795
	Plastic, Black and Red, LC2, LC3	8	-	-	-	58	1	⊠1829 571
	Plastic, Black and Gray, LC2, LC3	8	-	-	-	58	1	⊠1829 572
	Plastic, Black and Beige, LC3-300	8	-	-	-	58	1	⊠1829 612
	Plastic, Blue, LY1	8	-	-	-	58	1	⊠1828 796
	Plastic, Green, LY1	8	-	-	-	58	1	⊠1828 797
	Plastic, Brown and Beige, LY1	8	-	-	-	58	1	⊠1828 798
	Plastic, Gray, LY1	8	-	-	-	58	1	⊠1828 799
	Plastic, Red and Black	8	-	-	-	58	1	⊠1829 610
19-30-5	COVER, Wheel, w/ORNAMENT, Chrome	6-8	-	55-56	-	-	1	1618 465
19-30-18	NUT	6-8	55-58	55-58	55-58	55-58	1	852 414
19-31-0 STEERING POST BRACKET								
19-31-1	BRACKET, w/Std. Trans.	6-8	55-56	-	-	-	1	1595 908
	w/PowerFlite	6-8	55-56	-	-	-	1	1608 579
		6-8	57-58	57-58	-	-	1	1698 091
	Prime	6-8	-	55-56	-	-	1	1640 599
		8	-	-	55-56	-	1	1623 143
	S25 S26, LS2, LS3, C75, C76, LC2, LC3	8	-	-	57-58	57-58	1	1698 132
	S27, LS1	8	-	-	57-58	-	1	1698 727
		8	-	-	-	55-56	1	1623 147
	LC1	8	-	-	-	58	1	1830 824
19-31-7	BRACE, to Windshield Frame, Upper, IM, LY1	8	-	-	-	57-58	1	1771 630
	Lower, IM, LY1	8	-	-	-	57-58	1	1698 997
19-31-12	ADAPTER, Bracket, w/Std. Trans.	6-8	57-58	57	-	-	1	1698 099
19-31-19	SCREW, to Cap	6-8	-	56	-	-	1	1695 649
		6-8	-	57-58	-	-	2	6008 001
	LS1, LC1	8	-	-	58	58	2	*6008 038
	Instrument Panel Strainer, C71, C72, C73	8	-	-	-	56	2	1685 131
19-31-20	NUT, Bracket to Brace, w/RETAINER	6-8	-	55-56	-	-	2	⊠6013 000
19-31-21	PLATE, Bracket Attaching Clinch Nut	6-8	57-58	57-58	-	-	1	1685 880
19-31-24	CAP, w/Std. Trans.	6-8	55-56	-	-	-	1	1595 910
	w/PowerFlite	6-8	55-56	-	-	-	1	1608 583
	w/Auto. Trans.	6-8	57-58	-	-	-	1	1698 093
	w/Std. Trans.	6-8	57-58	-	-	-	1	1698 095
		6-8	-	55-56	-	-	1	1602 902
	w/Auto. Trans.	6-8	-	57-58	-	-	1	1698 103
	w/Std. Trans.	6-8	-	57	-	-	1	1698 107
		8	-	-	55-56	-	1	1623 139
	S25, S26, LS2, LS3, C75, C76, LC2, LC3	8	-	-	57-58	57-58	1	1698 108
	w/Auto. Trans., S27, LS1, LC1	8	-	-	57-58	58	1	1698 725
		8	-	-	-	55-56	1	1623 149
	CLAMP, to Instrument Panel, IM, LY1	8	-	-	-	57-58	1	1698 368
19-46-0 GEARSHIFT ROD OR TUBE								
19-46-3	TUBE, w/Std. Trans.	6-8	55-56	55-56	-	-	1	1617 344
19-46-6	BEARING, Tube, w/Std. Trans.	6-8	55-56	55-56	-	-	2	1557 947
	BUSHING, Tube, w/Std. Trans.	6-8	55-56	55-56	-	-	1	1142 539
19-46-10	SPRING, Rod Return, w/Std. Trans.	6-8	55-56	55-56	-	-	1	1613 108
19-46-13	GROMMET, Tube Lever, w/Std. Trans.	6-8	55-56	55-56	-	-	1	1610 985

★ Indicates use as required. Numerals in parentheses () refer to notes. Printed in U.S.A.
 ⊠ Indicates parts not listed in any previous parts book. Prices and specifications subject to change without notice.
 June 25, 1958 Supersedes Oct. 10, 1957. Page 19-30 * Indicates change or addition.

CODE	PART NAME AND DESCRIPTION	NO. OF CYL.	PLYMOUTH	DODGE	DESOTO	CHRYSLER AND IMPERIAL	PER CAR	PART NUMBER
------	---------------------------	-------------	----------	-------	--------	-----------------------	---------	-------------

POWER STEERING

19-46-14	BUSHING, Tube Lever Grommet, w/Std. Trans.	6-8	55-56	55-56	-	-	1	1610 986
19-46-16	LEVER, Rod, w/Std. Trans.	6-8	55-56	-	-	-	1	1615 645
	w/Std. Trans., Upper, S27	6-8	57	57	57	-	1	*1732 648
	w/Std. Trans., Lower, S27	6-8	57	57	57	-	1	*1732 649
	w/Std. Trans.	6-8	-	55-56	-	-	1	1615 646
19-46-32	CLAMP, Tube Support, w/Std. Trans., S27	6-8	57	57	57	-	1	*1732 402
19-46-41	WASHER, Rod, w/Std. Trans.	6-8	55-56	55-56	-	-	2	1615 640
19-46-42	SPACER, Rod, w/Std. Trans.	6-8	55-56	55-56	-	-	1	1614 639
19-46-55	SUPPORT, Tube, w/Std. Trans., S27	6-8	57	57	57	-	1	*1732 369
19-47-0 GEARSHIFT SELECTOR ROD								
19-47-2	ROD, w/Std. Trans.	6	55-56	-	-	-	1	1617 449
	w/Std. Trans.	8	55-56	-	-	-	1	1630 218
	w/Std. Trans.	6-8	-	55-56	-	-	1	1614 522
19-47-3	SPRING, Swivel, w/Std. Trans.	6-8	55-56	55-56	-	-	1	953 494
19-47-4	WASHER, w/Std. Trans.	6-8	55	55	-	-	2	6000 106
19-47-7	SPACER, Selector, w/Std. Trans.	6-8	55-56	55-56	-	-	1	1614 646
19-47-10	SWIVEL, w/Std. Trans.	6-8	55-56	55-56	-	-	1	1489 623
19-47-11	CLIP, w/Std. Trans.	6-8	55-56	55-56	-	-	2	1137 669
19-47-14	LEVER, Gearshift Selector, w/PILOT, w/Std. Trans.	6-8	55-56	55-56	-	-	1	1616 758
19-47-15	WASHER, Lever Spring, w/Std. Trans.	6-8	55-56	55-56	-	-	2	389 070
19-47-22	BRACKET, Gearshift Selector Lever, w/Std. Trans.	6-8	55-56	55-56	-	-	1	1610 981
19-48-0 GEARSHIFT CONTROL RODS								
19-48-1	ROD, Front, w/Std. Trans.	6	55-56	-	-	-	1	1617 451
	Front, w/Std. Trans.	8	55-56	-	-	-	1	1630 216
	Rear, w/Std. Trans.	6	55-56	-	-	-	1	1617 450
	Rear, w/Std. Trans.	8	55-56	-	-	-	1	1630 217
	w/Std. Trans., 2nd. and High, S27, UP TO	6-8	57-58 (1)	57	57	-	1	*1731 125
	w/Std. Trans., 1st. and Reverse, S27 UP TO	6-8	57-58 (1)	57	57	-	1	*1731 126
	w/Std. Trans., 2nd. and High, AFTER	6-8	58 (1)	-	-	-	1	*1829 646
	w/Std. Trans., 1st. and Reverse, AFTER	6-8	58 (1)	-	-	-	1	*1829 647
	Front, w/Std. Trans.	6-8	-	55-56	-	-	1	1614 520
	Front, w/Std. Trans., w/Dual Exhaust Pipes, except Sub.	8	-	55-56	-	-	1	1633 193
	Rear, w/Std. Trans.	6-8	-	55-56	-	-	1	1614 521
	Rear, w/Std. Trans., w/Dual Exhaust Pipes, except Sub.	8	-	55-56	-	-	1	1633 194
19-48-2	CLEVIS, Front, w/Std. Trans.	6-8	55-56	55-56	-	-	1	1614 591
19-48-4	CLIP, Front Clevis Pin, w/Std. Trans.	6-8	55-56	55-56	-	-	1	1137 669
19-48-9	SPRING, Front Clevis, w/Std. Trans.	6-8	55-56	55-56	-	-	1	1616 106
19-48-23	CLIP, w/Std. Trans.	6-8	55-56	55-56	-	-	★	1137 669

NOTE 1: LP1 Eng. No. L230-48233 Det. Blt. - LP1N-11237 Delaware Built, LP2 Eng. No. LP8-191968 Det. Blt. - LP2N-24635 Delaware Blt.

★ Indicates use as required.

Numerals in parentheses () refer to notes.

Printed in U.S.A.

⊠ Indicates parts not listed in any previous parts book.

Prices and specifications subject to change without notice.

* Indicates change or addition.

1955-58 PASSENGER CAR PARTS LIST

STEERING

CODE	PART NAME AND DESCRIPTION	NO. OF CYL.	PLYMOUTH	DODGE	DESOTO	CHRYSLER AND IMPERIAL	PER CAR	PART NUMBER
------	---------------------------	-------------	----------	-------	--------	-----------------------	---------	-------------

POWER STEERING

19-52-0 GEARSHIFT CONTROL BELL CRANK

19-52-2	BELL CRANK, w/Std. Trans. (also specify 1-1639 954 Spring)	6-8	55	55	-	-	1	1639 957
	w/Std. Trans.	6-8	56	56	-	-	1	1639 957
19-52-3	STUD, w/Std. Trans., P26, P28	6-8	55-56	55-56	-	-	1	1142 271
	w/Std. Trans.	8	55-56	-	-	-	1	1630 219
19-52-4	WASHER, Stud, w/Std. Trans.	8	55-56	-	-	-	1	1630 220
19-52-9	BRACKET, to Frame, w/Std. Trans., w/Dual Exhaust	8	-	55-56	-	-	1	1630 373
19-52-22	SPRING, Anti-Rattle, w/Std. Trans.	6-8	55	55	-	-	1	958 314
	w/Std. Trans.	6-8	56	56	-	-	1	1639 954

19-54-0 POWER STEERING OIL PUMP

19-54-2	PUMP.	6-8	55 (1)	55 (1)	55 (1)	55 (1)	1	1672 697
	Eaton Type, P30, D72	6-8	56-57	56-57	56	56	1	1672 697
	Thompson Type, w/Screw Lock Pulley, LY1	8	57	-	-	57-58	1	1733 496
	Type 3	6	58 (3)	58 (3)	-	-	1	1851 584
	Type 3, except LP2 Fury w/350 cu. in. Eng.	8	58 (3)	-	-	-	1	*1827 977
	Type 3, w/Car Cooling, LP2 Fury w/350 cu. in. Eng., LD2-D500, LD3	8	58 (3)	58 (3)	58 (3)	-	1	*1851 740
	Type 3, w/o Car Cooling, LP2 Fury w/350 cu. in. Eng., LD2-D500, LD3	8	58 (3)	58 (3)	58 (3)	-	1	*1827 819
	Vickers Type	8	-	56	56	-	1	1639 666
	Vickers Type, D66, D67	8	-	57 (2)	57 (2)	-	1	1826 158
	Vickers Type, D70, D71, LD2, LD3	8	-	57-58	58	-	1	1826 158
	Type 3, LD2	8	-	58 (3)	-	-	1	1851 332
	Type 3, LC1 w/Car Cooling	8	-	-	-	58 (3)	1	1827 830
	Type 3, LC1 w/o Car Cooling, LC2, LC3	8	-	-	-	58 (3)	1	1827 832

NOTE 1: Pump 1615 292 Stamped Eaton, no longer available - for complete Pump specify 1672 697 Pump and 1408 736 Adapter. For component of 1615 292 Pump see chart.

NOTE 2: UP TO the following Serial Numbers, Pulleys as shown below are also required:

Serial No.	Part No.	Serial No.	Part No.
D66 - 35179981 - Pulley	1821 523	D67 - 37249127 - Pulley	1821 523
S25 - 55337661 - Pulley	1821 526	S26 - 50399739 - Pulley	1821 526
S27 - 58003300 - Pulley	1821 523		

AFTER the above Serial Numbers, order Pulley only if damaged.

NOTE 3: Type 3 indicates Pump with pressed on Pulley.

NOTES

* Indicates use as required.

Numerals in parentheses () refer to notes.

Printed in U.S.A.

⊠ Indicates parts not listed in any previous parts book.

Prices and specifications subject to change without notice.

* Indicates change or addition.

POWER STEERING

POWER STEERING OIL PUMP COMPONENT PARTS

PUMP ASSEMBLIES

CODE	PART NAME	1615 292	1639 666	1672 697	1733 496	1672 610	1730 892	1826 158
Note: Quantity 1 per vehicle unless otherwise indicated.								
19-54-4	FLANGE, Coupling (2 req.)	1615 595	1615 595	1615 595	-----	-----	-----	-----
19-54-5	SCREW, Coupling Flange (2 req.) . .	1552 884	1552 884	1552 884	-----	-----	-----	-----
19-54-6	WASHER, Coupling Flange Screw (2 req.)	1552 885	1552 885	1552 885	-----	-----	-----	-----
19-54-7	INSULATOR, Coupling	1402 147	1402 147	1402 147	-----	-----	-----	-----
19-54-9	GASKET and SEAL PACKAGE, Pump	-----	-----	-----	1826 188	-----	-----	-----
19-54-10	SLEEVE, Coupling	1404 026	1404 026	1404 026	-----	-----	-----	-----
19-54-11	WASHER, to Generator (2 req.) . . .	1615 915	1615 915	1615 915	-----	-----	-----	-----
19-54-12	STUD, to Generator (★ req.)	842 295	51 561	51 561	-----	-----	-----	-----
19-54-13	SCREW, Pump Mtg.	-----	-----	-----	-----	-----	-----	1825 906
19-54-15	SEAT, Body, w/BEARING	-----	1639 726	-----	-----	-----	-----	-----
	BODY, BEARING, w/BALL	-----	-----	-----	-----	1786 704	1786 704	-----
	BODY	-----	-----	-----	-----	-----	-----	1826 176
19-54-16	DOWEL, Body to Cover (2 req.) . .	1483 202	-----	1483 202	-----	-----	-----	-----
	PIN, to Pressure Plate	-----	1639 724	-----	-----	-----	-----	-----
19-54-17	GASKET, Body to Cover	1733 844	-----	1733 844	-----	-----	-----	-----
	“O” RING, Body to Vane Cam Ring.	-----	1639 730	-----	-----	-----	-----	-----
19-54-18	BRACKET PACKAGE, Pump, D66, D67, D70, D71, LD2, LD3, S27, LS1 .	-----	-----	-----	-----	-----	-----	1843 024
19-54-20	COVER, Pump, w/RAIL	-----	1639 690	-----	-----	-----	-----	-----
	COVER, Pump Body	-----	-----	-----	-----	1786 705	1786 705	-----
	COVER	-----	-----	-----	-----	-----	-----	1826 165
19-54-21	SCREW, Body Cover (4 req.)	-----	-----	-----	-----	-----	-----	1826 173
19-54-22	CLIP, Cover Cap Spring	-----	1639 719	-----	-----	-----	-----	-----
19-54-23	RING, Sealing	-----	1639 736	-----	-----	-----	-----	-----
19-54-25	SHAFT	1615 596	1639 731	1615 596	-----	1786 713	1786 713	-----
	SHAFT, Drive	-----	-----	-----	1733 010	-----	-----	-----
	SHAFT, Pump	-----	-----	-----	-----	-----	-----	1826 181
19-54-26	BUSHING, Shaft (2 req.)	1408 724	-----	1408 724	-----	-----	-----	-----
	BEARING, Drive Shaft	-----	659 799	-----	1733 025	-----	-----	-----
	BEARING, Shaft	-----	-----	-----	-----	1786 716	1786 716	-----
	BUSHING, Shaft	-----	-----	-----	-----	-----	-----	1826 179
19-54-27	WASHER, Shaft Thrust	1611 607	-----	1611 607	-----	-----	-----	-----
19-54-28	RETAINER, Drive Shaft Bearing . .	-----	1639 733	-----	-----	-----	-----	-----
	RING, Drive Shaft Bearing Retainer.	-----	-----	-----	1733 026	-----	-----	-----
	RING, Drive Shaft Retainer	-----	-----	-----	1733 016	-----	-----	-----
	RING, Drive Shaft Bearing Snap . .	-----	-----	-----	-----	1786 717	1786 717	-----
	RETAINER, Shaft, (2 req.)	-----	-----	-----	-----	-----	-----	*1826 232
19-54-29	OIL SEAL, Shaft	1408 732	1639 734	1408 732	-----	1639 734	1639 734	-----
	SEAL, Drive Shaft	-----	-----	-----	1733 024	-----	-----	-----
	SEAL, Shaft	-----	-----	-----	-----	-----	-----	1826 167
19-54-31	VALVE, Flow Control, w/SPRING . .	1631 164	1639 679	1631 164	-----	1639 679	1639 679	1639 679
19-54-32	SPRING, Flow Control Valve	1408 744	1639 689	1408 744	-----	1639 689	1639 689	1639 689
19-54-35	PLATE, Pump Oil Flow	-----	-----	-----	-----	1786 707	1786 707	1786 707
19-54-37	SPRING, Pressure Relief Valve . . .	1533 143	-----	1533 143	-----	-----	-----	-----
19-54-40	RING, Pressure Relief Valve Retainer	1639 238	-----	1639 238	-----	-----	-----	-----
19-54-41	ROTOR, Inner and Outer	1408 728	-----	1408 728	-----	-----	-----	-----
19-54-42	KEY, Inner Rotor Drive	1408 735	-----	1408 735	-----	-----	-----	-----
19-54-43	RING, Inner Rotor Lock (2 req.) . .	1408 734	-----	-----	-----	-----	-----	-----
	RING, Inner Rotor Lock	-----	-----	1408 734	-----	-----	-----	-----

★ Indicates use as required.

Numerals in parentheses () refer to notes.

Printed in U.S.A.

⊠ Indicates parts not listed in any previous parts book.

Prices and specifications subject to change without notice.

* Indicates change or addition.

POWER STEERING

POWER STEERING OIL PUMP COMPONENT PARTS

PUMP ASSEMBLIES

CODE	PART NAME	1615 292	1639 666	1672 697	1733 496	1672 610	1730 892	1826 158
NOTE:	Quantity 1 per vehicle unless otherwise indicated.							
19-54-44	CAP, Cover	----	1639 718	----	----	----	----	----
	CAP, Tank Cover	----	----	----	----	1786 701	1786 701	----
19-54-45	BUSHING, Outer Rotor	1408 723	----	1408 723	----	----	----	----
19-54-46	PLUG, Cover	----	1639 720	----	----	----	----	----
19-54-49	RING, Cover Plug Sealing	----	1316 813	----	----	----	----	----
19-54-51	"O" RING, By-Pass Flow Director	1316 849	----	1316 849	----	----	----	----
19-54-53	VENTURI, Flow Director	1630 925	----	1630 925	----	----	----	----
19-54-54	RING, Rotor and Vane Package, Pump	----	1653 468	----	----	1752 454	1752 454	1826 159
19-54-60	FILTER, Oil	1615 295	----	1615 295	----	----	----	----
	FILTER, Tank	----	----	----	----	1786 696	1786 696	----
	FILTER, Pump, LY1	----	----	----	*1851 957	----	----	----
19-54-61	TANK, w/Filler TUBE	----	1639 667	----	----	----	----	----
	TANK	----	----	----	----	1826 168	1826 168	1826 168
19-54-62	PLATE, Oil Filter Reinforcement	1615 307	----	1615 307	----	----	----	----
19-54-63	CARTRIDGE, Oil Filter	1557 972	1639 739	1557 972	----	----	----	----
19-54-64	FILTER ELEMENT AND SEAL PACKAGE, Pump	----	1653 467	----	----	1752 455	1752 455	----
19-54-65	RETAINER, Filter Element	----	1639 740	----	----	----	----	----
19-54-69	RETAINER, Oil Filter Valve	1615 308	----	1615 308	----	----	----	----
19-54-70	GASKET, Pump to Filter Screw (2 req.)	1483 214	----	1483 214	----	----	----	----
	GASKET, Pump to Filter (2 req.)	1483 213	----	1483 213	----	----	----	----
	WASHER, Tank Screw Sealing (2 req.)	----	1539 287	----	----	----	----	----
19-54-72	SPRING, Filter Retainer	----	1639 741	----	----	----	----	----
19-54-75	COVER, Oil Filter	1407 727	----	1407 727	----	----	----	----
	COVER, Reservoir Filter	----	----	1731 489	----	----	----	----
19-54-76	GASKET, Oil Filter Cover	1406 164	----	1406 164	----	----	----	----
19-54-81	SPACER, Relief Valve, P31	----	----	----	*1737 017	----	----	----
19-54-85	BAFFLE, Oil Filter Cover	1615 306	----	1615 306	----	----	----	----
	PLATE, Tank Baffle	----	----	----	----	1786 697	1786 697	----
19-54-86	PULLEY, Pump, P31 AFTER Serial No. 16203924	----	----	----	*1827 293	----	----	----
	PULLEY, Pump, D66, D67, S27, 4 1/2" dia.	----	----	----	----	1676 264	1676 264	----
	PULLEY, Pump, D66, D67, D70, D71, LD2, LD3, S27, LS1, 5 1/8" dia.	----	----	----	----	----	----	*1825 975
	PULLEY, Pump, S25 UP TO Serial No. 55337661, S26 UP TO Serial No. 50399739	----	----	----	----	----	1672 566	----
	PULLEY, Pump, S25 FF 55337661 to 55356419, Serial No. 50399739 to 50412417	----	----	----	----	----	----	1821 526
	PULLEY, Pump, S25 AFTER Serial No. 55356419, S26 AFTER Serial No. 50412417, LS2, LS3	----	----	----	----	----	----	1825 976
	PULLEY, Pump, C75-1 AFTER WE57-21894, C75-2 AFTER LE57- 11776, C76 AFTER NE57-12587, C76-300 AFTER 3NE57-1505, IM AFTER CE57-11890, LY1, (UP TO see part type code 19-54-98)	----	----	----	*1826 051	----	----	----

★ Indicates use as required. Numerals in parentheses () refer to notes. Printed in U.S.A.
 ☐ Indicates parts not listed in any previous parts book. Prices and specifications subject to change without notice.
 June 25, 1958 Supersedes Oct. 10, 1957. Page 19-34 * Indicates change or addition.

POWER STEERING

POWER STEERING OIL PUMP COMPONENT PARTS

PUMP ASSEMBLIES

CODE	PART NAME	1615 292	1639 666	1672 697	1733 496	1672 610	1730 892	1826 158
NOTE:	Quantity 1 per vehicle unless otherwise indicated.							
19-54-88	CLAMP, Oil Filter Cover (2 req.)	1406 166	-----	1406 166	-----	-----	-----	-----
	w/NUT	1406 825	-----	1406 825	-----	-----	-----	-----
19-54-89	LINK, Clamp.	1406 827	-----	1406 827	-----	-----	-----	-----
19-54-90	BELT, Pump Drive, P31 UP TO Serial No. 16203924	-----	-----	-----	1401 622	-----	-----	-----
	BELT, Pump Drive, P31 AFTER Serial No. 16203924	-----	-----	-----	*1827 461	-----	-----	-----
	BELT, Pump Drive, D66, D67, S27, w/1676 264 Pulley	-----	-----	-----	-----	1821 684	1821 684	-----
	BELT, Pump Drive, D66, D67, D70, D71, LD2, S27, w/1825 975 Pulley.	-----	-----	-----	-----	-----	-----	1326 615
	BELT, Pump Drive, LD3, LS1, LS2, LS3, w/1825 975 Pulley	-----	-----	-----	-----	-----	-----	1632 586
	BELT, Pump Dual, C75-1 UP TO WE57-21894, C75-2 UP TO LE57- 11776, C76 UP TO NE57-12587, C76-300 UP TO 3NE57-1505, IM UP TO CE57-11890	-----	-----	-----	1821 141	-----	-----	-----
	BELT, Pump Dual, C75-1 AFTER WE57-21894, C75-2 AFTER LE57- 11776, C76 AFTER NE57-12587, C76-300 AFTER 3NE57-1505, IM AFTER CE57-11890, LY1.	-----	-----	-----	*1401 625	-----	-----	-----
19-54-96	PLATE, Cover Pressure	-----	1639 722	-----	-----	-----	-----	-----
19-54-97	RING, Cover Pressure Plate Sealing	-----	1639 723	-----	-----	-----	-----	-----
19-54-98	PULLEY and BELT PACKAGE, Pump, P31 UP TO Serial No. 16203924	-----	-----	-----	1843 196	-----	-----	-----
	D66, D67, D70, D71, S27, w/4 1/2" dia. Pulley	-----	-----	-----	-----	-----	-----	1843 145
	C75-1 UP TO WE57-21894, C75-2 UP TO LE57-11776, C76 UP TO NE57- 12587, C76-300 UP TO 3NE57-1505, IM UP TO CE57-11890	-----	-----	-----	1843 197	-----	-----	-----
19-54-99	SLEEVE, Cover to Ring Alignment	-----	1639 725	-----	-----	-----	-----	-----
19-54-102	SPACER, Pump Pulley, P31.	-----	-----	-----	* 567 331	-----	-----	-----
	C75-1 UP TO WE57-21894, C75-2 UP TO LE57-11776, C76 UP TO NE57-12587, C76-300 UP TO 3NE57-1505, IM UP TO CE57-11890	-----	-----	-----	120 394	-----	-----	-----
	C75-1 AFTER WE57-21894, C75-2 AFTER LE57-11776, C76 AFTER NE57-12587, C76-300 AFTER 3NE57-1505, IM AFTER CE57-11890, LY1	-----	-----	-----	* 567 331	-----	-----	-----
19-54-104	CAP, Filler, w/Oil INDICATOR.	-----	1639 673	-----	-----	-----	-----	-----
19-54-106	STRAINER, Tube	-----	1639 678	-----	-----	-----	-----	-----
19-54-115	BRACKET, Pump Front, P31	-----	-----	-----	*1733 507	-----	-----	-----
	BRACKET, Pump Front, S25, S26	-----	-----	-----	-----	-----	1730 894	-----

★ Indicates use as required.

☐ Indicates parts not listed in any previous parts book.

* Indicates change or addition.

Numerals in parentheses () refer to notes.

Printed in U.S.A.
Prices and specifications subject to change without notice.

POWER STEERING

POWER STEERING OIL PUMP COMPONENT PARTS

PUMP ASSEMBLIES

CODE	PART NAME	1615 292	1639 666	1672 697	1733 496	1672 610	1730 892	1826 158
NOTE:	Quantity 1 per vehicle unless otherwise indicated.							
	BRACKET, Pump Mounting, S25, S26	----	----	----	----	----	----	1826 177
	BRACKET, Pump Front, LD2, LD3, LS1, LS2, LS3	----	----	----	----	----	----	1852 887
	BRACKET, Pump Rear, LD2, LD3, LS1, LS2, LS3	----	----	----	----	----	----	1826 605
	BRACKET, Pump Front, C75, C76, IM, LY1	----	----	----	1733 497	----	----	----
	BRACKET, Pump Rear, P31	----	----	----	1733 508	----	----	----
	BRACKET, Pump Rear, C75, C76, IM, LY1	----	----	----	1733 498	----	----	----
19-54-116	SPACER, Pump Bracket, D66, D67, D70, D71, LD2, LD3, S27, LS1	----	----	----	----	1732 859	1732 859	1732 859
19-54-125	PLUG, Control Valve	----	----	----	----	1786 690	1786 690	1786 690
19-54-126	SEAL, Control Valve Plug	----	----	----	----	1786 691	1786 691	1786 691
19-54-127	PIN, Control Valve Roll	----	----	----	----	1786 692	1786 692	1826 162
19-54-135	BOLT, Tank, w/BRACKET	----	----	----	----	1786 694	1786 694	----
19-54-136	SCREW, Tank Bracket (2 req.)	----	----	----	----	1786 695	1786 695	1786 695
19-54-137	SPRING, Tank Baffle Plate	----	----	----	----	1786 698	1786 698	----
19-54-138	COVER, Tank	----	----	----	----	1786 699	1786 699	1786 699
19-54-139	GASKET, Tank Cover	----	----	----	----	1826 163	1826 163	1826 163
19-54-140	WASHER, Tank Cover Cap	----	----	----	----	1786 702	1786 702	----
19-54-141	BAFFLE, Tank	----	----	----	----	----	----	1826 175
19-54-143	BOLT, Tank	----	----	----	----	----	----	1826 169
19-54-144	BRACKET, Tank Bolt	----	----	----	----	----	----	1826 170
19-54-145	SEAL, Tank to Body Oil (3 req.)	----	----	----	----	1786 703	1786 703	1826 164
19-54-150	SPRING, Oil Flow Plate	----	----	----	----	1786 708	1786 708	1826 161
19-54-151	RING, Oil Seal, Small (2 req.)	----	----	----	----	1786 709	1786 709	----
	RING, Oil Seal, Large (2 req.)	----	----	----	----	1786 710	1786 710	----
19-54-154	PLATE, Pressure	----	----	----	----	1786 711	1786 711	1826 166
19-54-155	PIN, Pressure Plate (2 req.)	----	----	----	----	1786 712	1786 712	1786 712
19-54-157	KEY, Shaft	----	----	----	----	1786 714	1786 714	----
19-54-158	RING, Shaft Snap	----	----	----	----	1786 715	1786 715	----
19-54-165	BLOCK, Cylinder, w/PLUNGER	----	----	----	1676 798	----	----	----
19-54-170	BODY, w/VALVE	----	----	----	1676 799	----	----	----
19-54-171	GASKET, Body and Bearing Cap	----	----	----	1733 013	----	----	----
19-54-172	SEAL, Body and Fitting	----	----	----	1733 020	----	----	----
19-54-174	SEAL, Body to Valve	----	----	----	1733 018	----	----	----
	SEAL, Body to Cover, Small	----	----	----	----	----	----	1826 171
	SEAL, Body to Cover, Large	----	----	----	----	----	----	1826 172
19-54-180	RESERVOIR	----	----	----	1676 800	----	----	----
19-54-182	CAP, Reservoir Filler Neck	----	----	----	1732 990	----	----	----
19-54-185	GASKET, Pump Reservoir Cap Screw	----	----	----	1733 014	----	----	----
19-54-206	BEARING, Sleeve	----	----	----	1732 995	----	----	----
19-54-207	SEAL, Bearing Cap	----	----	----	1733 015	----	----	----
19-54-210	CAP, Bearing, w/Sleeve BEARING	----	----	----	1732 993	----	----	----
19-54-212	CAP, End	----	----	----	1732 996	----	----	----
19-54-213	GASKET, End Cap and Body	----	----	----	1733 003	----	----	----
19-54-222	SPRING, Flow Valve	----	----	----	1733 022	----	----	----
19-54-225	FITTING, Discharge	----	----	----	1738 530	----	----	----
19-54-226	GASKET, Discharge Fitting	----	----	----	1733 019	----	----	----
19-54-250	NUT, Pump Wing	----	----	----	----	----	----	*1826 261
19-54-251	WASHER, Pump Wing Nut	----	----	----	----	----	----	*1826 262

* Indicates use as required.

Numerals in parentheses () refer to notes.

Printed in U.S.A.

† Indicates parts not listed in any previous parts book.

Prices and specifications subject to change without notice.

Nov. 10, 1958 Supersedes June 25, 1958.

* Indicates change or addition.

POWER STEERING

POWER STEERING OIL PUMP COMPONENT PARTS

PUMP ASSEMBLIES

CODE	PART NAME	1851 584	1827 977	1851 332	1827 819	1851 740	1827 830	1827 832
------	-----------	----------	----------	----------	----------	----------	----------	----------

NOTE: Quantity 1 per vehicle unless otherwise indicated.

19-54-13	SCREW, Pump Mounting, w/o Car Cooling	-----	-----	1852 056	-----	-----	-----	-----
	SCREW, Pump Adjusting (2 Req.)	-----	-----	-----	-----	-----	1851 371	-----
19-54-29	OIL SEAL, Shaft	1734 913	1734 913	1734 913	1734 913	1734 913	1734 913	1734 913
19-54-32	SPRING, Flow Control Valve	1732 953	1732 953	1732 953	1732 953	1732 953	1732 953	1732 953
19-54-60	FILTER, Pump	-----	-----	-----	*1851 957	*1851 957	-----	-----
19-54-86	PULLEY, Pump	1851 460	1733 488	1733 488	1826 056	1851 732	1827 833	1827 833
19-54-90	BELT, Pump Drive	1401 624	1854 895	-----	1827 431	1827 431	-----	-----
	BELT, Pump Dual	-----	-----	-----	-----	-----	1821 141	1401 625
	BELT, Pump Drive, w/o Car Cooling	-----	-----	1855 031	-----	-----	-----	-----
19-54-91	STRAP, Pump Adjusting	1851 464	-----	-----	-----	-----	-----	-----
19-54-95	SUPPORT, Pump	1851 461	-----	-----	-----	-----	-----	-----
19-54-102	SPACER, Pump Pulley	-----	567 331	-----	-----	-----	-----	-----
19-54-113	STUD, Pump Adjusting Strap Spacer	1851 463	-----	-----	-----	-----	-----	-----
19-54-115	BRACKET, Pump Rear	-----	1851 314	1851 333	1826 057	1826 057	-----	1738 685
	BRACKET, Pump Front	-----	1733 487	1851 321	1733 505	1826 058	-----	1733 505
	BRACKET, Pump	1855 186	-----	-----	-----	-----	1851 317	-----
19-54-116	SPACER, Pump Bracket Support, w/o Car Cooling	-----	-----	1851 334	-----	-----	-----	-----
19-54-119	WASHER, Pump Adjusting Screw Lock	*6013 067	*6013 067	*6013 067	*6013 067	*6013 067	*6013 067	*6013 067
19-54-128	PACKAGE, Flow Control Valve Plug and Snap Ring	1879 353	1879 353	1879 353	1879 353	1879 353	1879 353	1879 353
19-54-180	RESERVOIR	1738 647	1738 647	1738 647	1738 647	1738 647	1738 647	1738 647
19-54-181	SEAL, Pump Oil Reservoir	1732 946	1732 946	1732 946	1732 946	1732 946	1732 946	1732 946
	SEAL, Pump Oil Reservoir Mtg.	1738 662	1738 662	1738 662	1738 662	1738 662	1738 662	1738 662
19-54-182	CAP, Reservoir Filler Neck	1732 921	1732 921	1732 921	1732 921	1732 921	1732 921	1732 921
19-54-183	GASKET, Reservoir Filler Neck Cap	1732 924	1732 924	1732 924	1732 924	1732 924	1732 924	1732 924
19-54-188	SEAT, Pump Outlet Fitting Ball	1738 683	1738 683	1738 683	1738 683	1738 683	1738 683	1738 683
19-54-246	BODY, Pressure Relief Valve	1852 855	1852 855	1852 855	1852 855	1852 855	1852 855	1852 855
19-54-248	GASKET, Pressure Relief Valve Body	1852 920	1852 920	1852 920	1852 920	1852 920	1852 920	1852 920

NOTES

★ Indicates use as required.

☐ Indicates parts not listed in any previous parts book.

* Indicates change or addition.

Numerals in parentheses () refer to notes.

1955-58 PASSENGER CAR PARTS LIST

STEERING

CODE	PART NAME AND DESCRIPTION	NO. OF CYL.	PLYMOUTH	DODGE	DESOTO	CHRYSLER AND IMPERIAL	PER CAR	PART NUMBER
------	---------------------------	-------------	----------	-------	--------	-----------------------	---------	-------------

POWER STEERING

19-55-0 POWER STEERING GEAR CYLINDER

19-55-1	"O" RING PACKAGE, Gear	6-8	55-56	55-56	-	-	1	1603 230
	LC2, LC3, LY1, Type 2	6-8	57	57	57	57-58	1	*1752 480
	P31, Type 1	6-8	57-58	58	58	58	1	*1881 715
		8	-	-	55-56	55-56	1	1603 229

19-56-0 POWER STEERING GEAR PISTON

19-56-4	PISTON, w/RINGS and SPACER. (also specify 2-1634 561 Ring)	6-8	55 (3)	55 (3)	-	-	1	1639 170
		6-8	55-56 (4)	55-56 (4)	-	-	1	1639 170
	LC2, LC3, LY1, Type 2	6-8	57	57	55-57 (2)	55-58 (2)	1	*1639 169
		8	-	-	55 (1)	55 (1)	1	1554 388
19-56-6	RING, Piston, w/RETAINER	6-8	55-56 (4)	55-56 (4)	-	-	2	1634 561
	LC2, LC3, LY1, Type 2	6-8	57	57	55-57 (2)	55-58 (2)	2	*1618 788
	RING and SEAL PACKAGE, Piston, UP TO letter "H" stamped on the Housing, Part Type Code 19-02-1, P31, Type 1	6-8	57-58	58	58	58	1	1879 745
	RING, Piston w/Letter "H" and AFTER stamped on the Housing, Type 1	6-8	58	58	58	58	1	1822 672
	w/Letter "H" and AFTER stamped on the Housing, Type 1	6-8	58	58	58	58	1	1822 671
	RING and RETAINER PACKAGE, Piston	6-8	55	55	-	-	1	1692 656
		8	-	-	55	55	1	1692 657
19-56-19	SNAP RING.	6-8	55-56	55-56	-	-	2	1537 593
	LC2, LC3, LY1, Type 2	6-8	57	57	55-57	55-58	2	*1488 115
19-56-21	PIN, LC2, LC3, LY1, Type 2	6-8	55-57	55-57	55-57	55-58	1	*1531 425
19-56-22	"O" RING, PIN, LC2, LC3, LY1, Type 2	6-8	55-57	55-57	55-57	55-58	1	*1488 205
19-56-40	ROD, Upper	6-8	55-56	55-56	-	-	1	1671 254
	Lower, w/BODY and SPRING.	6-8	55-56	55-56	-	-	1	1615 663
	Upper, LC2, LC3, LY1, Type 2	6-8	57	57	55-57	55-58	1	*1671 258
	Lower, LC2, LC3, LY1, Type 2	6-8	57	57	57	57-58	1	*1675 196
	Lower	8	-	-	55-56	55-56	1	1676 448
19-56-41	PACKAGE, Piston Rod, Nut and Spacer, LC2, LC3, LY1, Type 2	6-8	57	57	55-57	55-58	1	*1643 134
19-56-42	"O" RING, Rod	6-8	55-56	55-56	-	-	2	1537 603
	LC2, LC3, LY1, Type 2	6-8	57	57	55-57	55-58	2	*1488 204
19-56-44	OIL SEAL, Rod	6-8	55-56	55-56	-	-	2	1537 589
	LC2, LC3, LY1, Type 2	6-8	57	57	55-57	55-58	2	*1434 525
19-56-47	BUSHING, Housing Piston Rod	6-8	55-56	55-56	-	-	1	1630 073
	LC2, LC3, LY1, Type 2	6-8	57	57	57	57-58	1	*1670 690
		8	-	-	55-56	55-56	1	1615 170
19-56-48	DOWEL, Housing Piston Rod Bushing	6-8	55-56	55-56	55-56	55-56	1	1556 334
19-56-50	NUT, Upper Rod (also specify 1-1431 439 cup)	6-8	55	55	-	-	1	1639 640
	Upper Rod	6-8	56	56	-	-	1	1639 640
	LC2, LC3, LY1, Type 2	6-8	57	57	57	57-58	1	*1531 438
	Upper Rod	8	-	-	55-56	55-56	1	1531 438
19-56-52	CUP, Rod Nut Lock, Upper	6-8	55	55	-	-	1	1537 609
	Upper	6-8	56	56	55-56	55-56	1	1531 439
	LC2, LC3, LY1, Type 2	6-8	57	57	57	57-58	1	*1531 439

NOTE 1: S21, S22, C67, C68, C69, C70, used up to date 3-19-55 stenciled on housing side of flange, where upper housing bolts to lower housing.

NOTE 2: S21, S22, C67, C68, C69, C70, used after date 3-19-55 stenciled on housing side of flange, where upper housing bolts to lower housing.

NOTE 3: P26, P27, D55, D56, used up to date 5-18-55 stenciled on housing side of flange, where upper housing bolts to lower housing.

NOTE 4: P26, P27, D55, D56, used after date 5-18-55 stenciled on housing side of flange, where upper housing bolts to lower housing.

★ Indicates use as required.

Numerals in parentheses () refer to notes.

Printed in U.S.A.

⊘ Indicates parts not listed in any previous parts book.

Prices and specifications subject to change without notice.

Nov. 10, 1958 Supersedes June 25, 1958.

Page 19-38

* Indicates change or addition.

CODE	PART NAME AND DESCRIPTION	NO. OF CYL.	PLYMOUTH	DODGE	DESOTO	CHRYSLER AND IMPERIAL	PER CAR	PART NUMBER
19-56-80	BODY, Pressure Relief Valve	6-8	55-56	55-56	55-56	55-56	1	1615 098
19-56-83	SPRING, Pressure Control Valve, w/Letter "H" and AFTER stamped on the Housing, Type 1	6-8	58	58	58	58	1	1822 442
19-56-85	PLUNGER, Pressure Relief Valve, LC2, LC3, LY1, Type 2	6-8	55-57	55-57	55-57	55-58	1	*1611 788
19-56-88	END, Pressure Relief Valve	6-8	55-56	55-56	55-56	55-56	1	1556 341
19-56-90	"O" RING, Pressure Control Valve, P31, Type 1	6-8	57-58	58	58	58	1	1536 268

POWER STEERING

19-57-0 POWER STEERING GEAR VALVES

19-57-2	PACKAGE, Valve Piston and Spring, P31, Type 1	6-8	57-58	58	58	58	1	1879 509
19-57-3	VALVE	6-8	55-58	55-58	55-58	55-58	1	*1944 004
19-57-13	"O" RING, Valve Housing, P31, Type 1	6-8	57-58	58	58	58	1	1733 612
19-57-41	PISTON, Valve, w/ROD	6-8	55-56	55-56	-	-	1	1675 192
	LC2, LC3, LY1, Type 2	6-8	57	57	55-57	55-58	1	*1675 191
19-57-63	LEVER, Valve, w/Diagonal Groove, P31, Type 1 w/Straight Groove, Type 1	6-8	57-58	58	58	58	1	*1733 725
	SPRING, Valve Lever, Type 1	6-8	58	58	58	58	1	1822 380
19-57-64	SPRING, Valve Lever, Type 1	6-8	58	58	58	58	1	1822 383
19-57-72	"O" RING, Valve Rod, LC2, LC3, LY1, Type 2	6-8	55-57	55-57	55-57	55-58	2	*1316 864
19-57-75	DISC, Valve Rod Adjusting	6-8	55 (3)	55 (3)	55 (1)	55 (1)	1	1533 846
		6-8	55 (4)	55 (4)	55 (2)	55 (2)	1	1670 685
		6-8	56 (5)	56 (5)	56 (5)	56 (5)	1	1670 685
19-57-76	CUP, Valve Rod Adjusting, LC2, LC3, LY1, Type 2	6-8	56-57 (6)	56-57 (6)	56-57 (6)	56-58 (6)	1	*1673 600
19-57-77	RETAINER, Valve Rod Adjusting Disc	6-8	55-56 (5)	55-56 (5)	55-56 (5)	55-56 (5)	1	1531 437
19-57-85	SPACER, Valve Control, 1.0928" wide	6-8	55-56	55-56	-	-	1	1554 834
	1.0938" wide	6-8	55-56	55-56	-	-	1	1554 833
	1.1870" O. D.	6-8	57-58	57-58	55-58	55-58	★	1531 540
	1.1878" O. D.	6-8	57-58	57-58	55-58	55-58	★	1531 541
19-57-87	SEAL, Valve Control Spacer	6-8	55-56	55-56	-	-	1	1554 831
	LC2, LC3, LY1, Type 2	6-8	57	57	55-57	55-58	1	*1531 543
19-57-90	RETAINER, Valve Control Spacer	6-8	55-56	55-56	-	-	2	1554 832
	LC2, LC3, LY1, Type 2	6-8	57	57	55-57	55-58	2	*1531 538

NOTE 1: S21, S22, C67, C68, C69, C70, used UP TO date 2-1-55 stenciled on housing side of flange, where upper housing bolts to lower housing.

NOTE 2: S21, S22, C67, C68, C69, C70, used AFTER date 2-1-55 stenciled on housing side of flange, where upper housing bolts to lower housing.

NOTE 3: P26, P27, D55, D56, used UP TO date 2-20-55 stenciled on housing side of flange, where upper housing bolts to lower housing.

NOTE 4: P26, P27, D55, D56, used AFTER date 2-20-55 stenciled on housing side of flange, where upper housing bolts to lower housing.

NOTE 5: All 1956 Models used UP TO date 2-24-56 stenciled on housing side of flange, where upper housing bolts to lower housing.

NOTE 6: All 1956 Models used AFTER date 2-24-56 stenciled on housing side of flange, where upper housing bolts to lower housing.

★ Indicates use as required.

Numerals in parentheses () refer to notes.

Printed in U.S.A.

□ Indicates parts not listed in any previous parts book.

Prices and specifications subject to change without notice.

* Indicates change or addition.

1955-58 PASSENGER CAR PARTS LIST

STEERING

CODE	PART NAME AND DESCRIPTION	NO. OF CYL.	PLYMOUTH	DODGE	DESOTO	CHRYSLER AND IMPERIAL	PER CAR	PART NUMBER
------	---------------------------	-------------	----------	-------	--------	-----------------------	---------	-------------

POWER STEERING

19-58-0 POWER STEERING GEAR HOSE								
19-58-7	HOSE, Pressure	6-8	55	55	-	-	1	1730 085
	w/1672 697 Pump, P30, D72	6-8	56-57	56-57	-	-	1	*1676 472
	w/1733 496 Pump	8	57	-	-	-	1	*1820 621
	w/1851 584 Pump	6	58	58	-	-	1	1829 613
	w/1827 977 Pump	8	58	-	-	-	1	1829 613
	w/1639 636 Pump	8	-	56	-	-	1	1672 827
	w/1672 610, 1730 892, 1826 158 Pump, S27, LS1	8	-	57-58	57-58	-	1	1820 049
	w/1851 352 Pump, LD2	8	-	58	-	-	1	1829 613
	w/1827 819-1851 740 Pump.	8	58	58	58	-	1	1829 613
		8	-	-	55	55	1	1672 814
	w/1672 697 Pump	8	-	-	56	56	1	1676 472
	w/1639 666 Pump	8	-	-	56	-	1	1672 828
	w/1730 892, 1826 158 Pump, S25, S26, LS2, LS3	8	-	-	57-58	-	1	1820 050
	w/1733 496 Pump, LY1	8	-	-	-	57-58	1	1820 047
	w/1827 832 Pump, LC1 w/o Car Cooling, LC2, LC3	8	-	-	-	58	1	1829 613
	w/1827 830 Pump, LC1 w/Car Cooling	8	-	-	-	58	1	1829 613
19-58-9	BUMPER, Pressure Hose	6-8	55	55	55	55	1	1637 502
	w/1672 697 Pump	6-8	56	56	56	56	1	1676 465
19-58-14	HOSE, Return	6-8	55-56	55-56	55-56	55-56	1	1489 384
	w/1672 697 Pump	6	57	57	-	-	1	1489 384
	w/1733 496 Pump	8	57	-	-	-	1	1820 164
	w/1851 584 Pump	6	58	58	-	-	1	1820 164
	w/1827 977 Pump	8	58	-	-	-	1	1820 164
	w/1672 610-1730 892 and 1826 158 Pump	8	-	57-58	57-58	-	1	1489 384
	w/1851 332 Pump, LD2	8	-	58	-	-	1	1820 164
	w/1827 819-1851 740 Pump	8	58	58	58	-	1	1820 164
	w/1733 496 Pump, LY1	8	-	-	-	57-58	1	1820 165
	w/1827 830 Pump, LC1, w/Car Cooling	8	-	-	-	58	1	1820 164
	w/1827 832 Pump, LC1, w/o Car Cooling, LC2, LC3	8	-	-	-	58	1	1820 164
19-58-15	ADAPTER, Return Hose.	6	55-57	55-57	-	-	1	1630 079
		8	55-56	55-56	55-56	55-56	1	1489 070
	HOUSING	6-8	55-56	55-56	-	-	1	1489 070
	SHAFT COVER	8	-	-	55-56	55-56	1	1489 070
19-58-17	TUBE, Return Hose Adapter	6	55-57	55-57	-	-	1	1630 080
19-58-20	GASKET, Return Hose Adapter, P30, D72	6-8	55-57	55-57	55-56	55-56	1	1485 894
	HOUSING	6-8	55-56	55-56	-	-	1	1485 894
	SHAFT COVER	8	-	-	55-56	55-56	1	1485 894
19-58-25	CLAMP, Return Hose	6-8	55-58	55-58	55-58	55-58	2	870 469
19-58-30	ADAPTER, Pressure Hose (on housing).	6-8	55-58	55-58	55-58	55-58	1	1618 610
	Pump Hose (on pump)	6-8	55	55	55	55	1	1408 736
	(on pump) P30, D72, w/1672 697 Pump	6-8	56-57	56-57	56	56	1	1672 669
19-58-31	GASKET, Pressure Hose Adapter (on housing).	6-8	55-58	55-58	55-58	55-58	1	1618 611
	(on pump)	6-8	55	55	55	55	1	1408 737
	(on pump) P30, D72, w/1672 697 Pump.	6-8	56-57	56-57	56	56	1	1408 737

NOTES

★ Indicates use as required. Numerals in parentheses () refer to notes. Printed in U.S.A.
 ☐ Indicates parts not listed in any previous parts book. Prices and specifications subject to change without notice.
 June 25, 1958. Page 19-40 * Indicates change or addition.