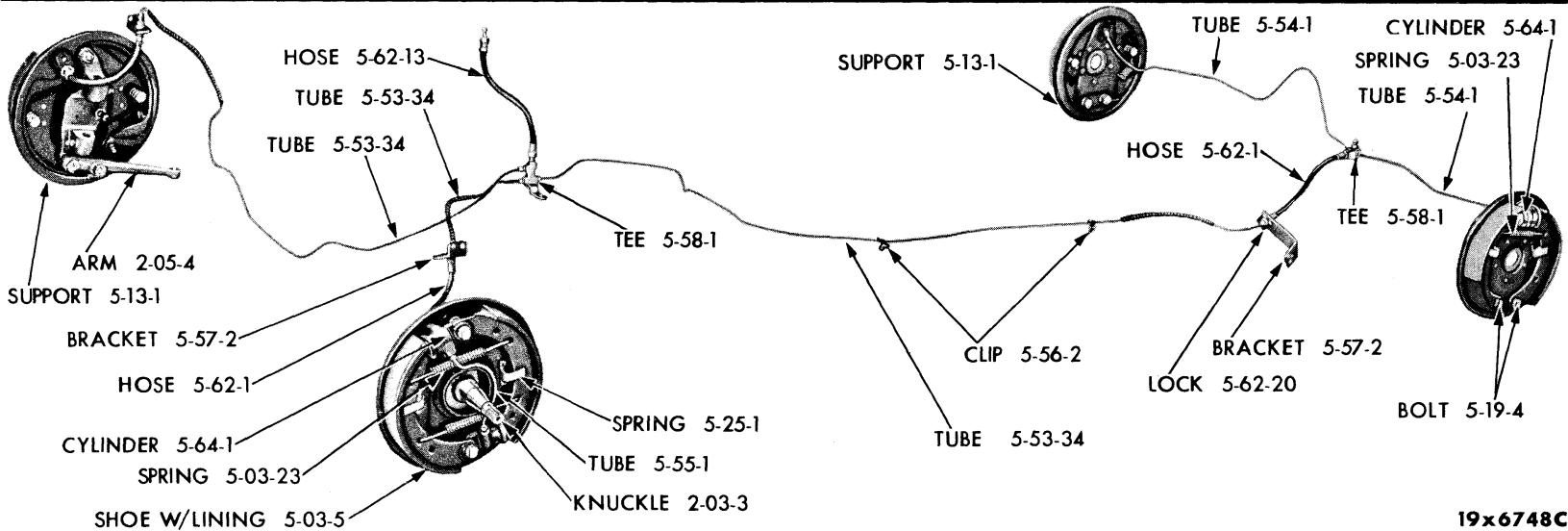
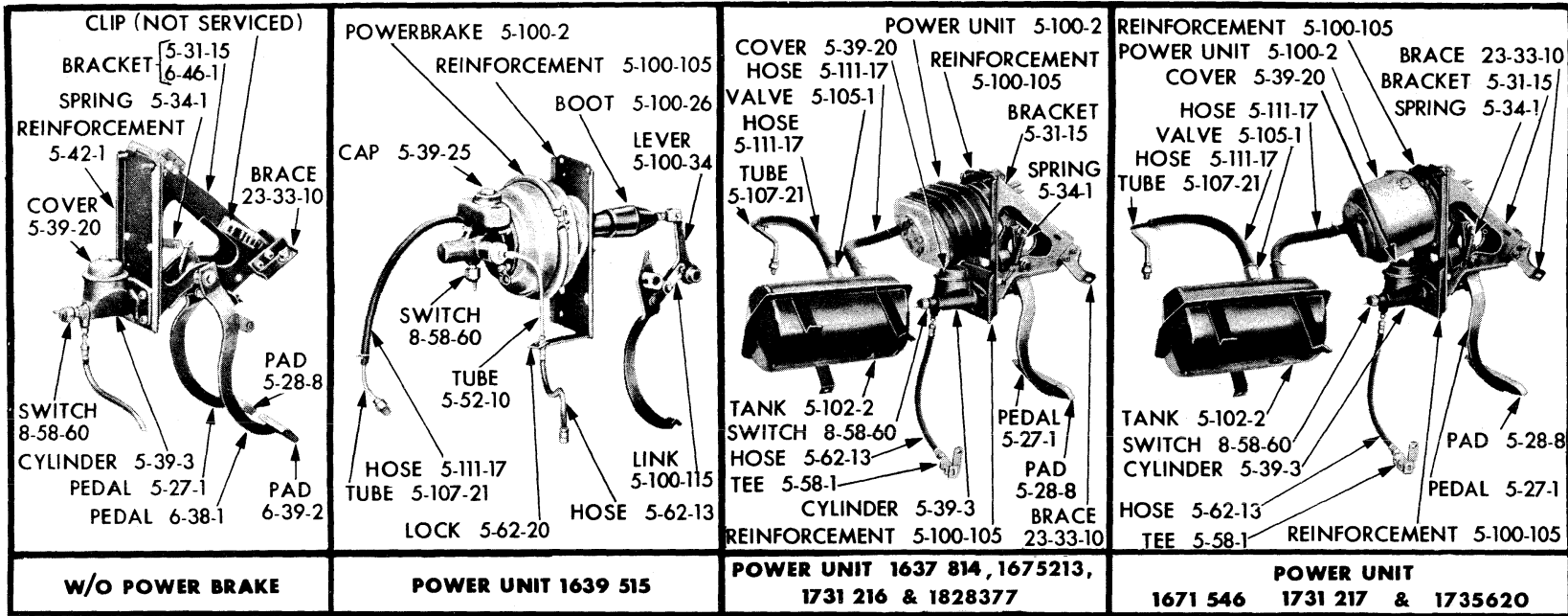


GROUP 5 - BRAKE-SERVICE



19x6748C

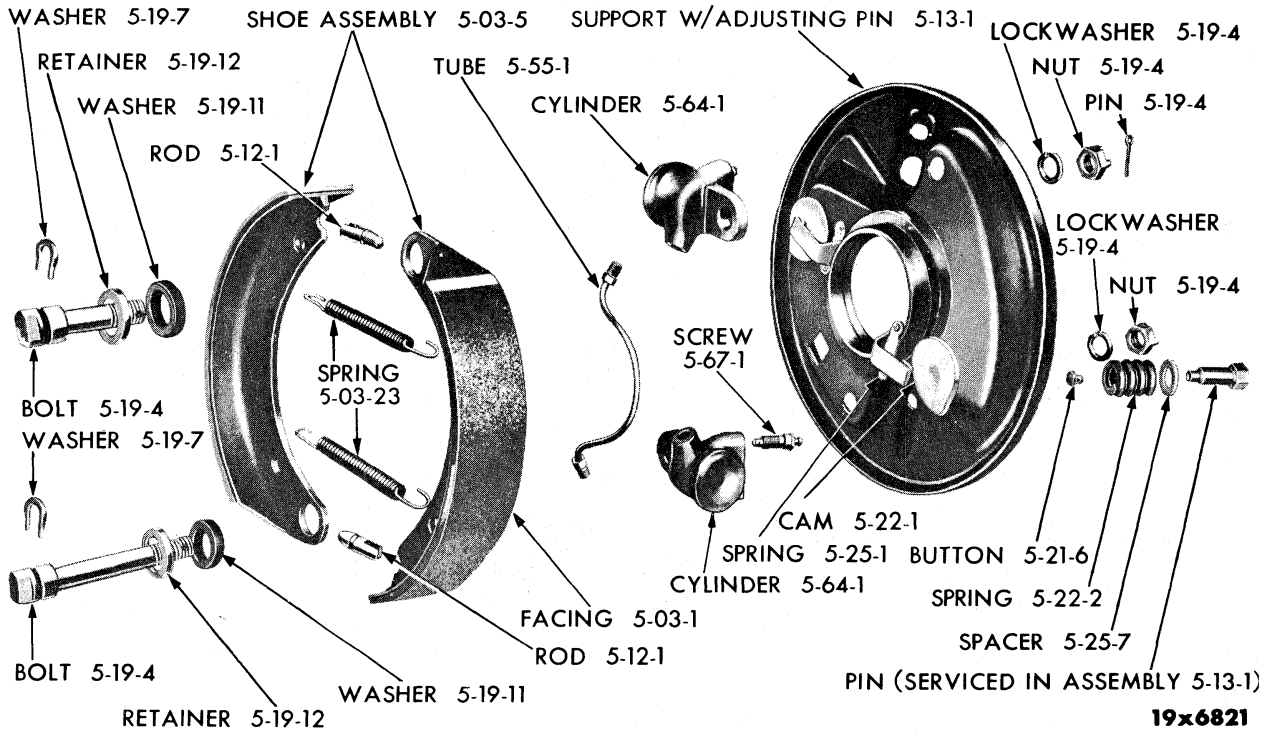
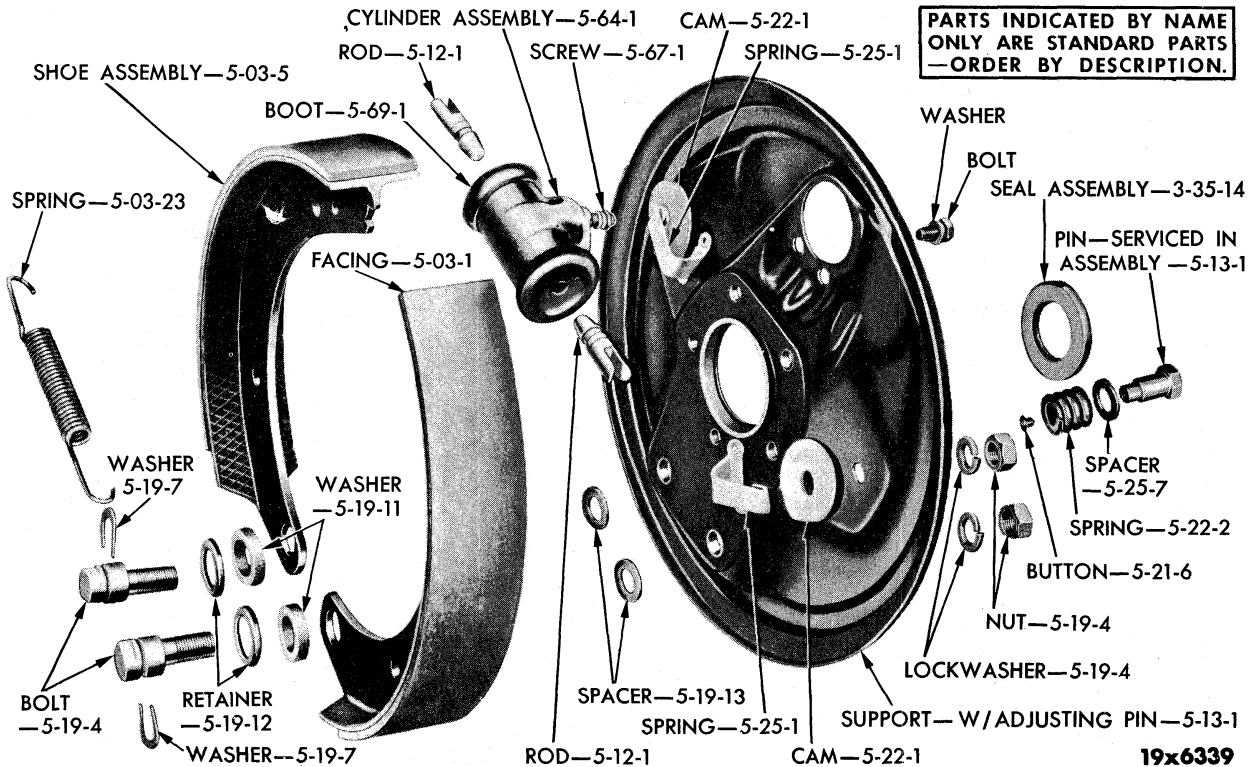


Plate 5-2

FRONT WHEEL BRAKE



PARTS INDICATED BY NAME
ONLY ARE STANDARD PARTS
—ORDER BY DESCRIPTION.

Plate 5-3

REAR WHEEL BRAKE

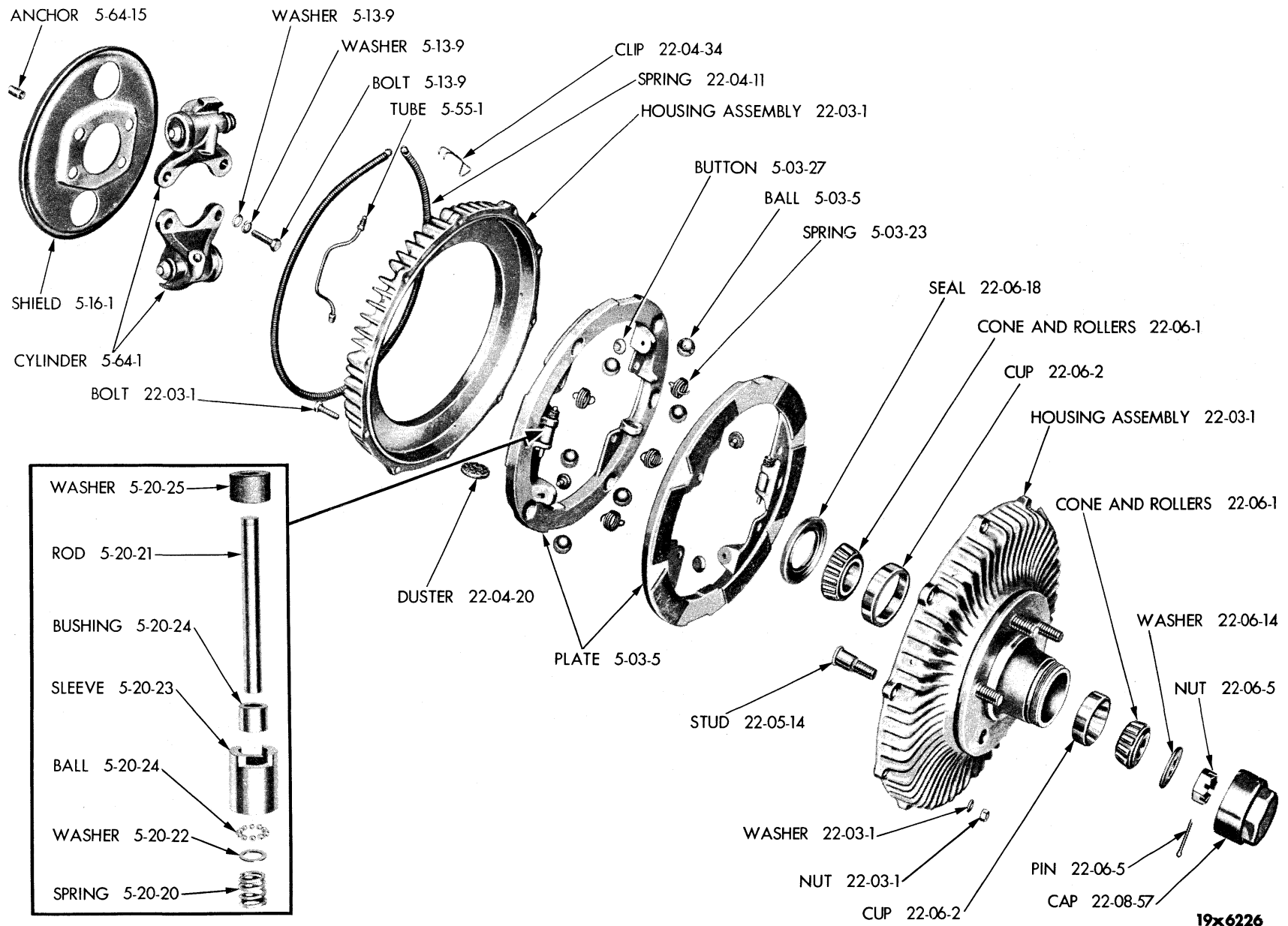


Plate 5-4

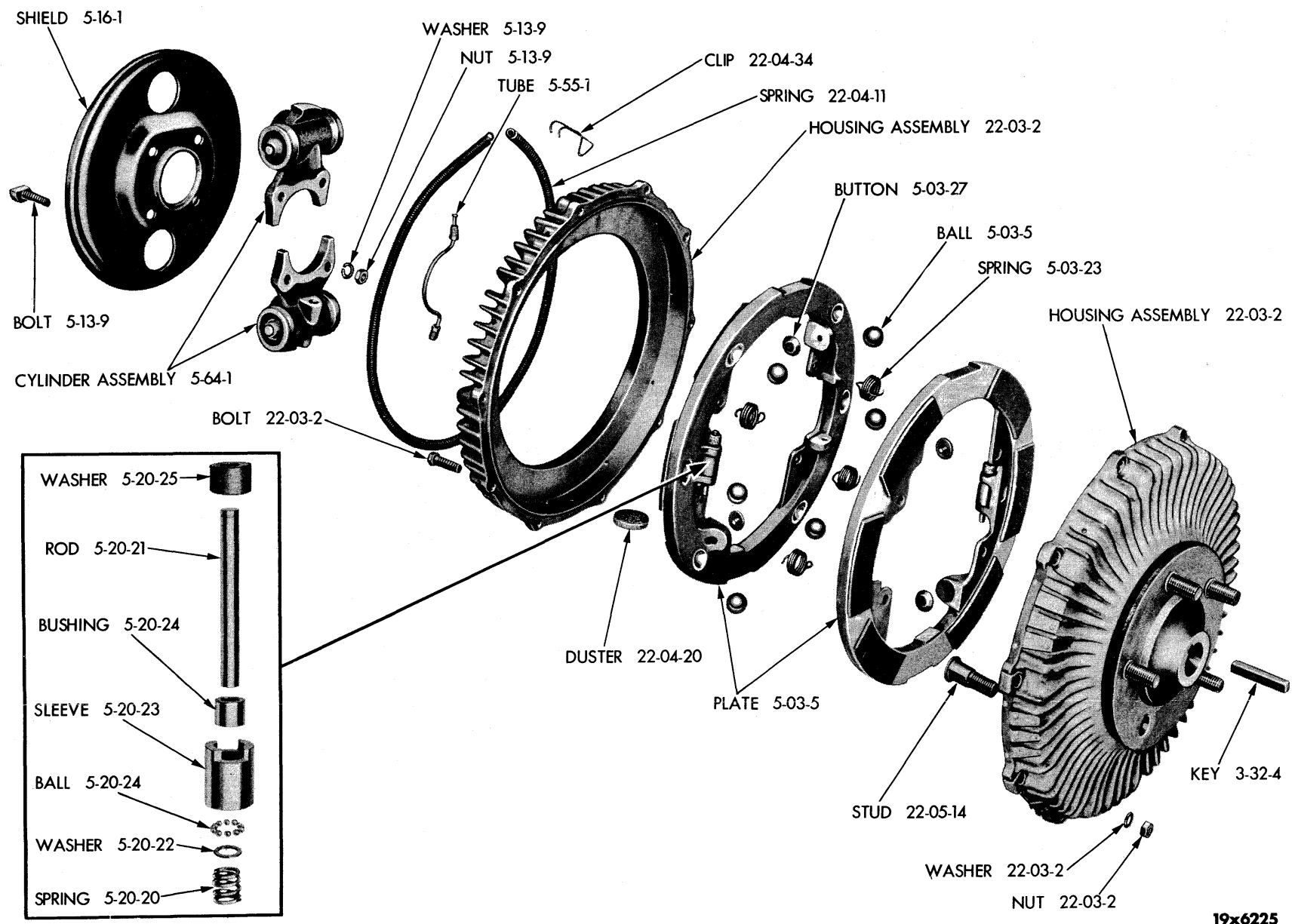
FRONT WHEEL BRAKE (DISC TYPE)

19x6226

October 10, 1957 Supersedes Dec. 10, 1956.

Page 5-4

Printed in U.S.A.



19x6225

Plate 5-5

REAR WHEEL BRAKE (DISC TYPE)

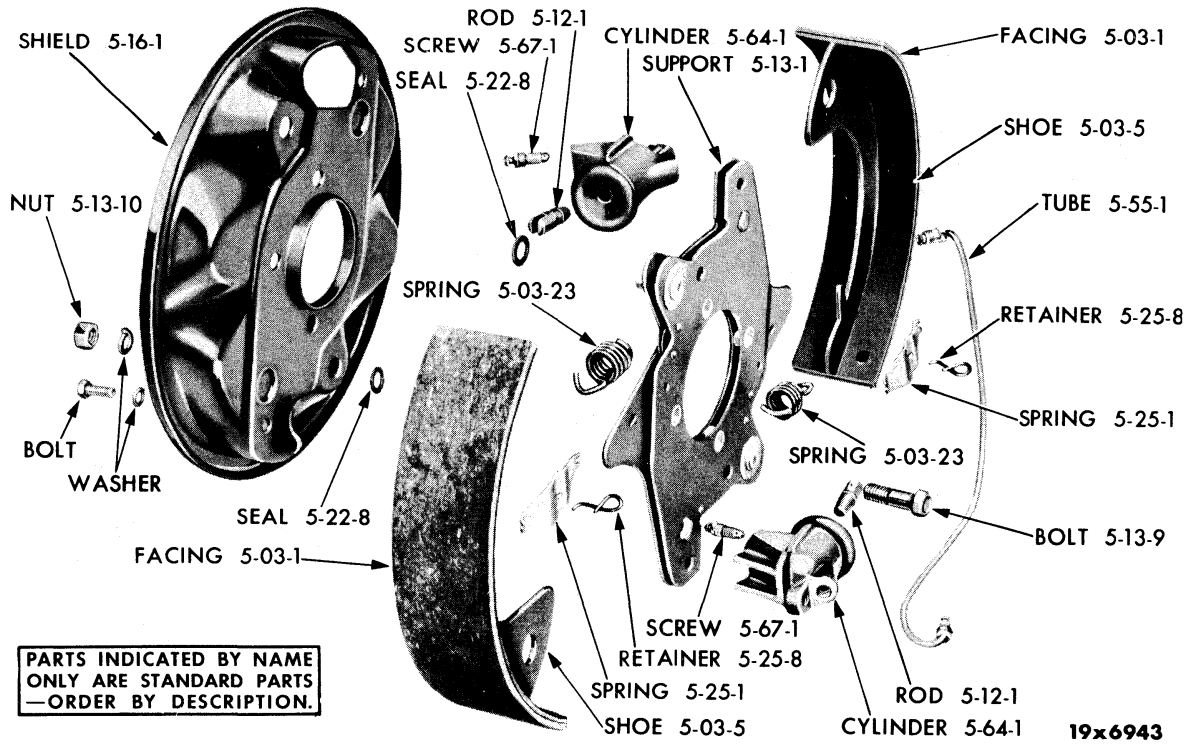


Plate 5-6

FRONT WHEEL BRAKE (TOTAL CONTACT TYPE)

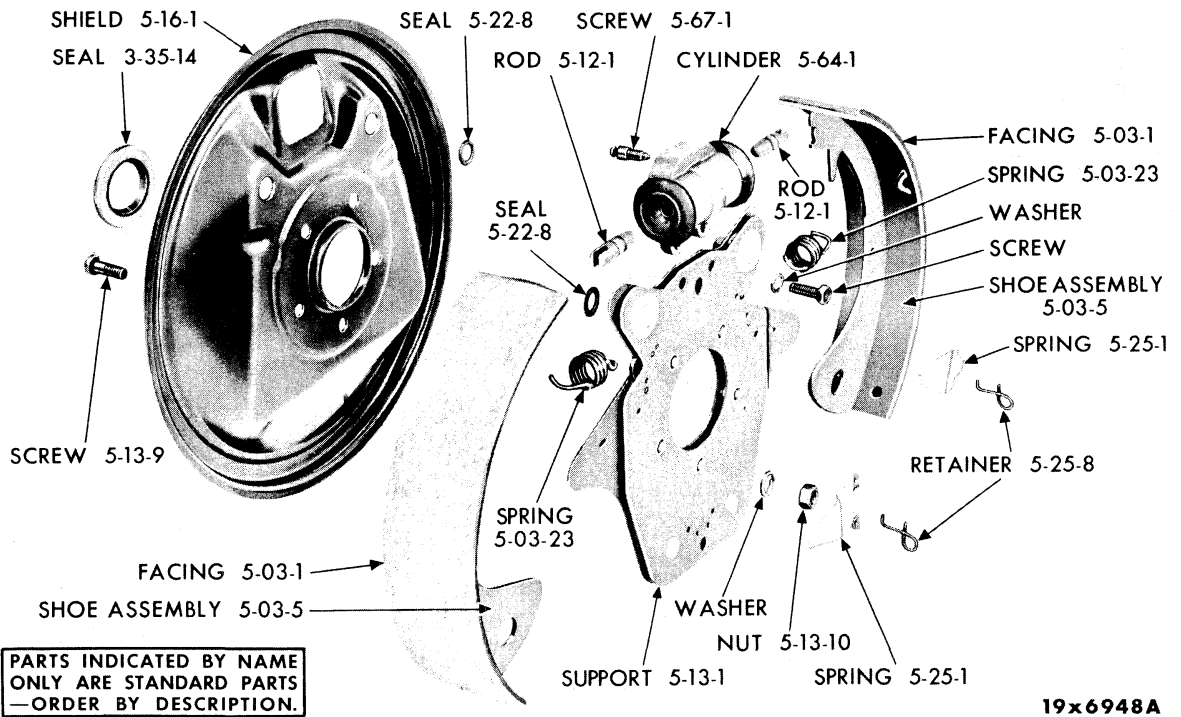


Plate 5-7

REAR WHEEL BRAKE (TOTAL CONTACT TYPE)

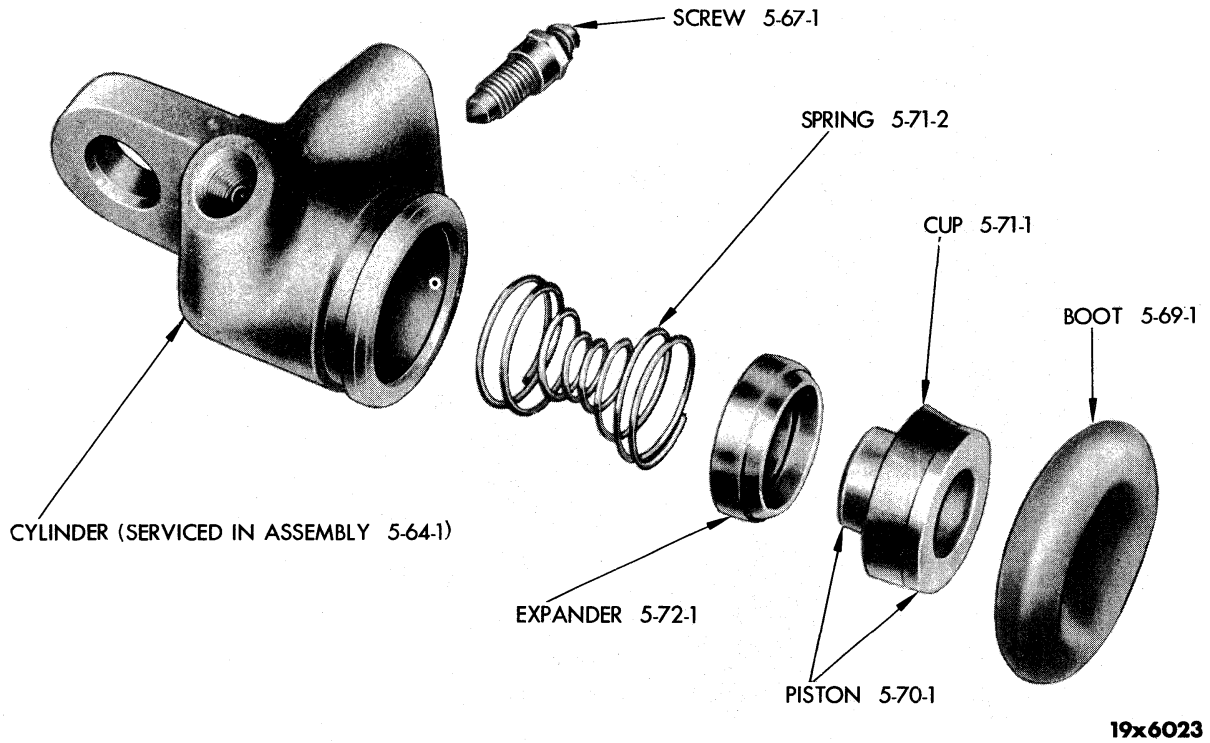


Plate 5-8

FRONT WHEEL BRAKE CYLINDER

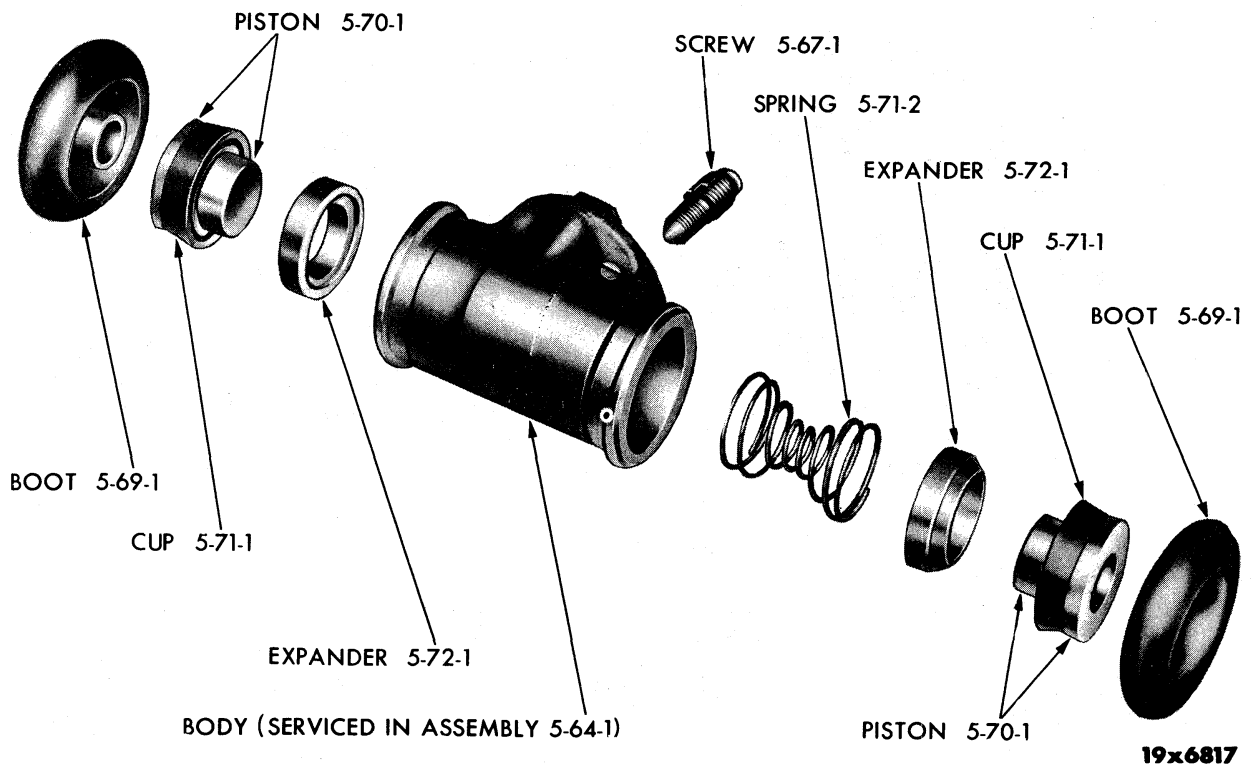
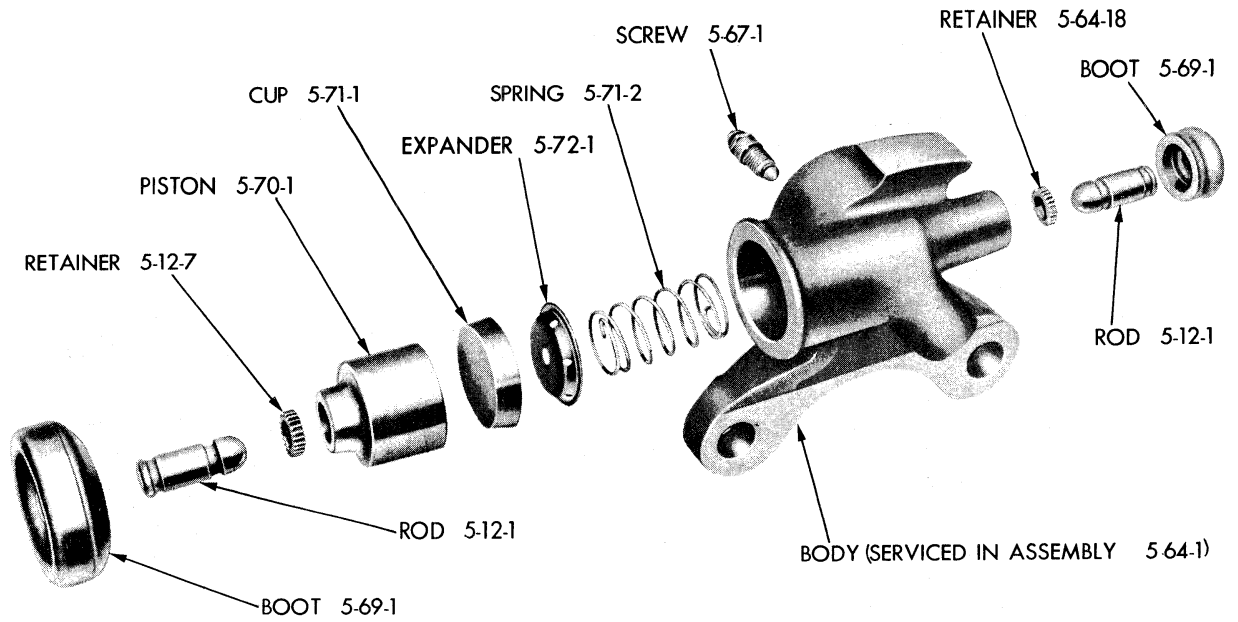


Plate 5-9

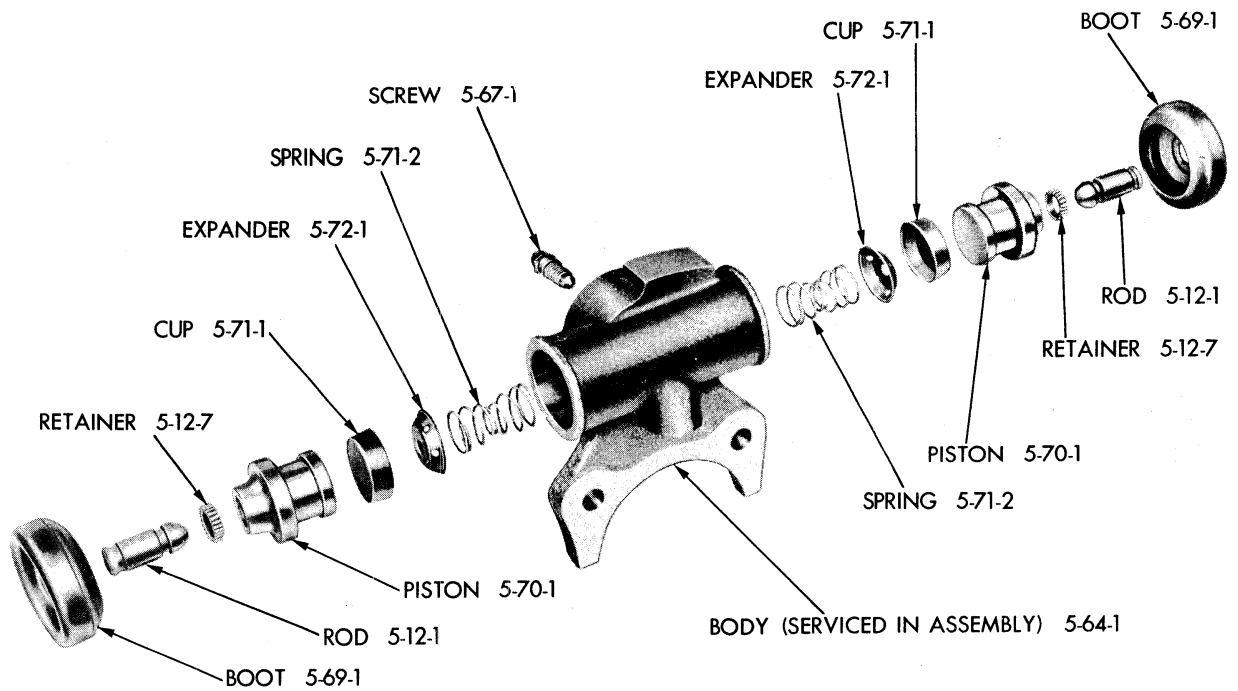
REAR WHEEL BRAKE CYLINDER



19x6159A

Plate 5-10

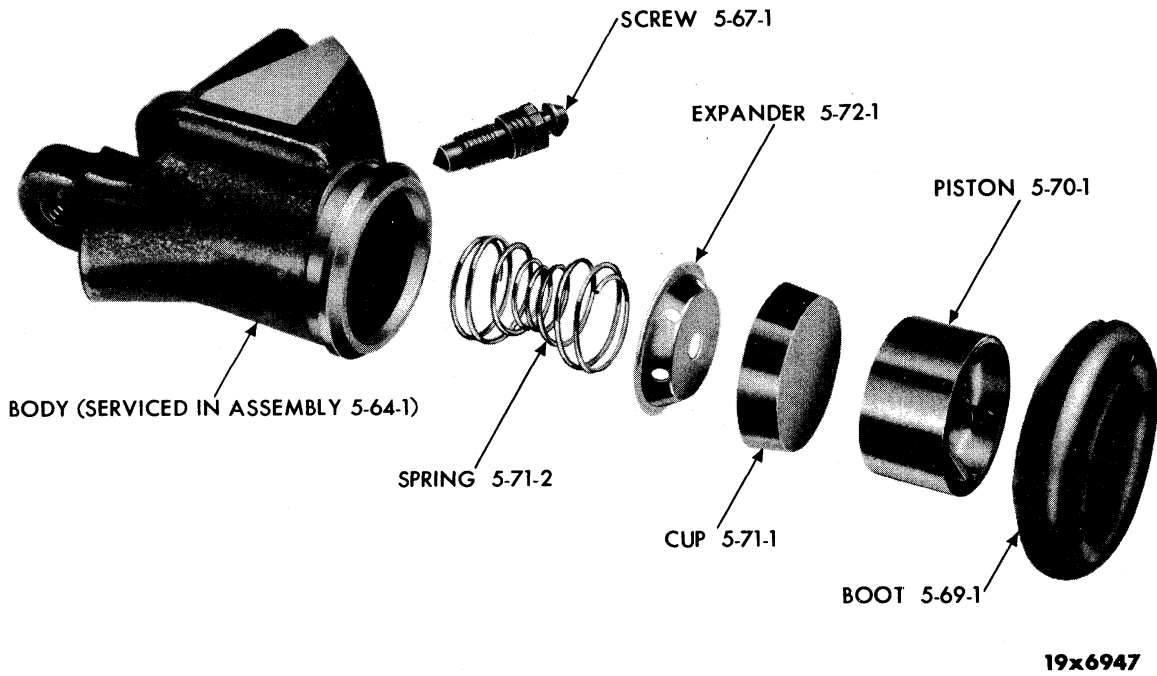
FRONT WHEEL BRAKE CYLINDER (USED WITH DISC BRAKE)



19x6158

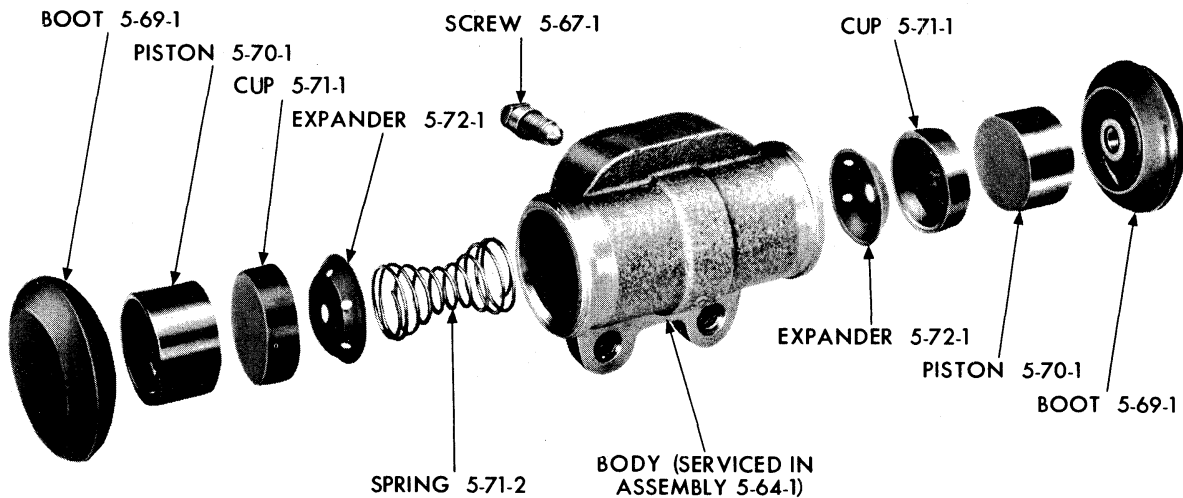
Plate 5-11

REAR WHEEL BRAKE CYLINDER (USED WITH DISC BRAKE)



19x6947

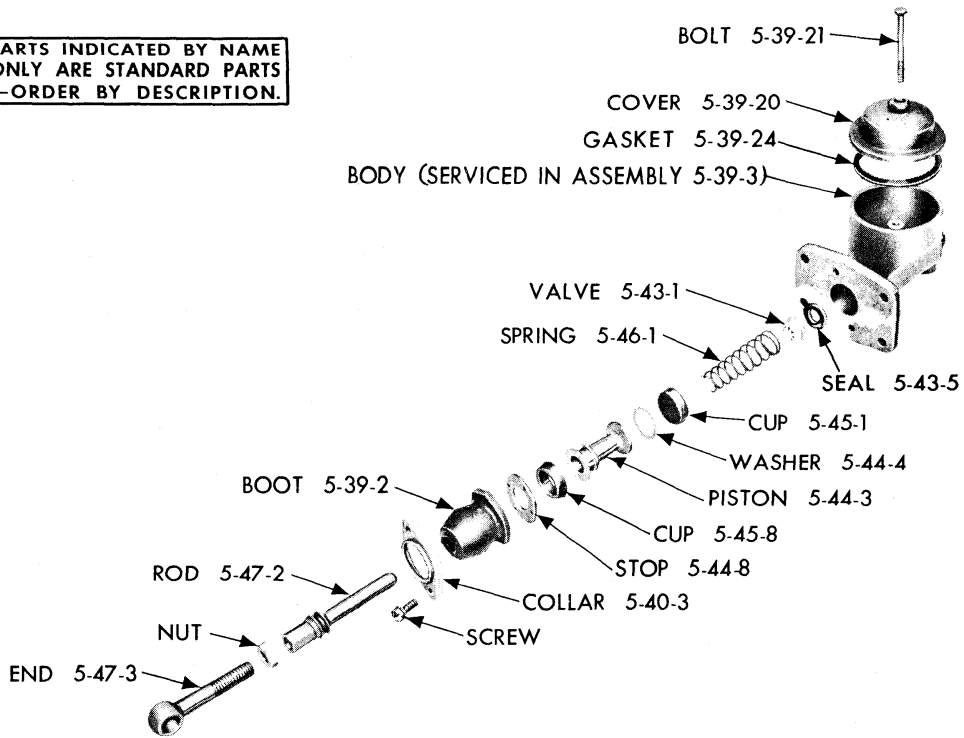
Plate 5-12 FRONT WHEEL BRAKE CYLINDER (USED WITH TOTAL CONTACT TYPE BRAKES)



19x6949

Plate 5-13 REAR WHEEL BRAKE CYLINDER (USED WITH TOTAL CONTACT TYPE BRAKES)

**PARTS INDICATED BY NAME
 ONLY ARE STANDARD PARTS
 —ORDER BY DESCRIPTION.**



19x6702B

Plate 5-14

MASTER CYLINDER

NOTES

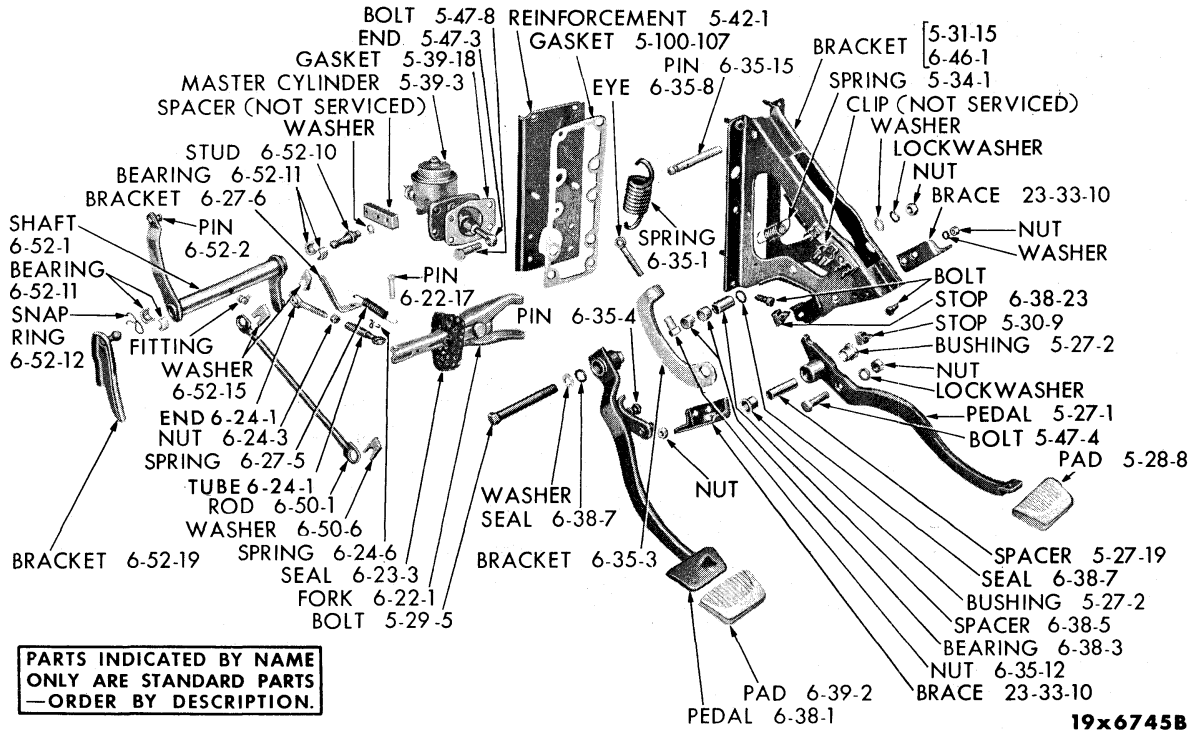


Plate 5-16

BRAKE AND CLUTCH PEDAL LINKAGE - 1955-56 MODELS

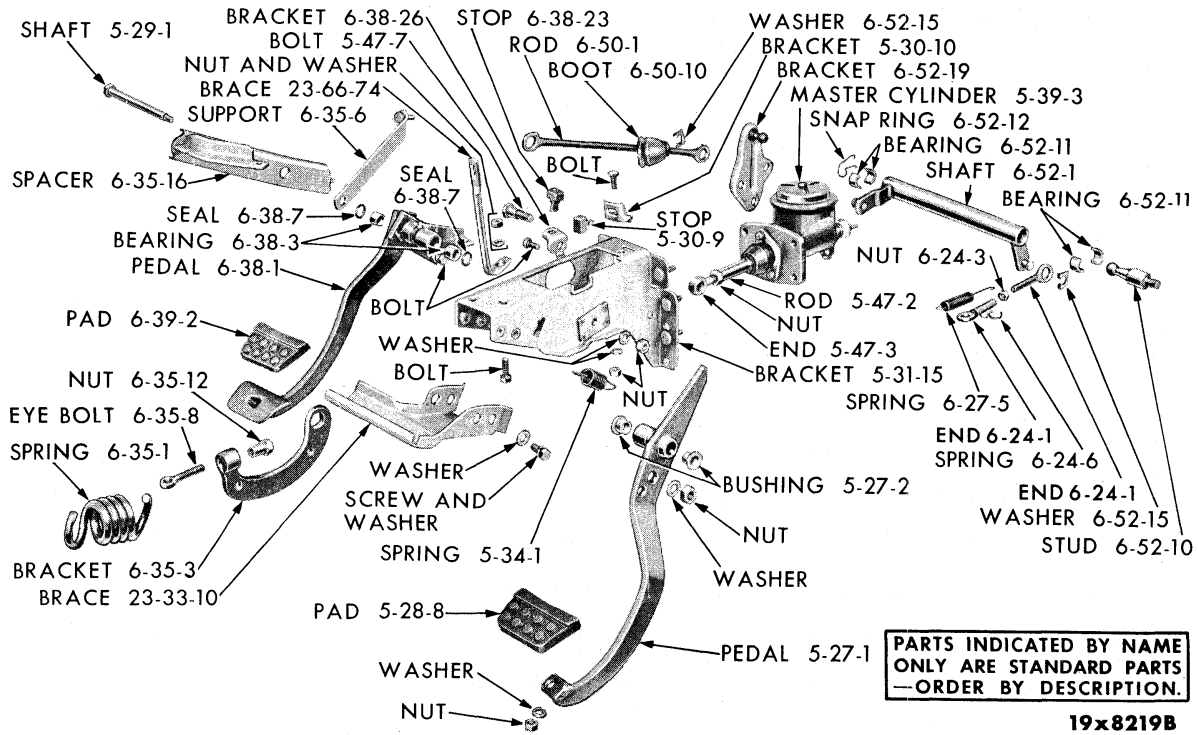
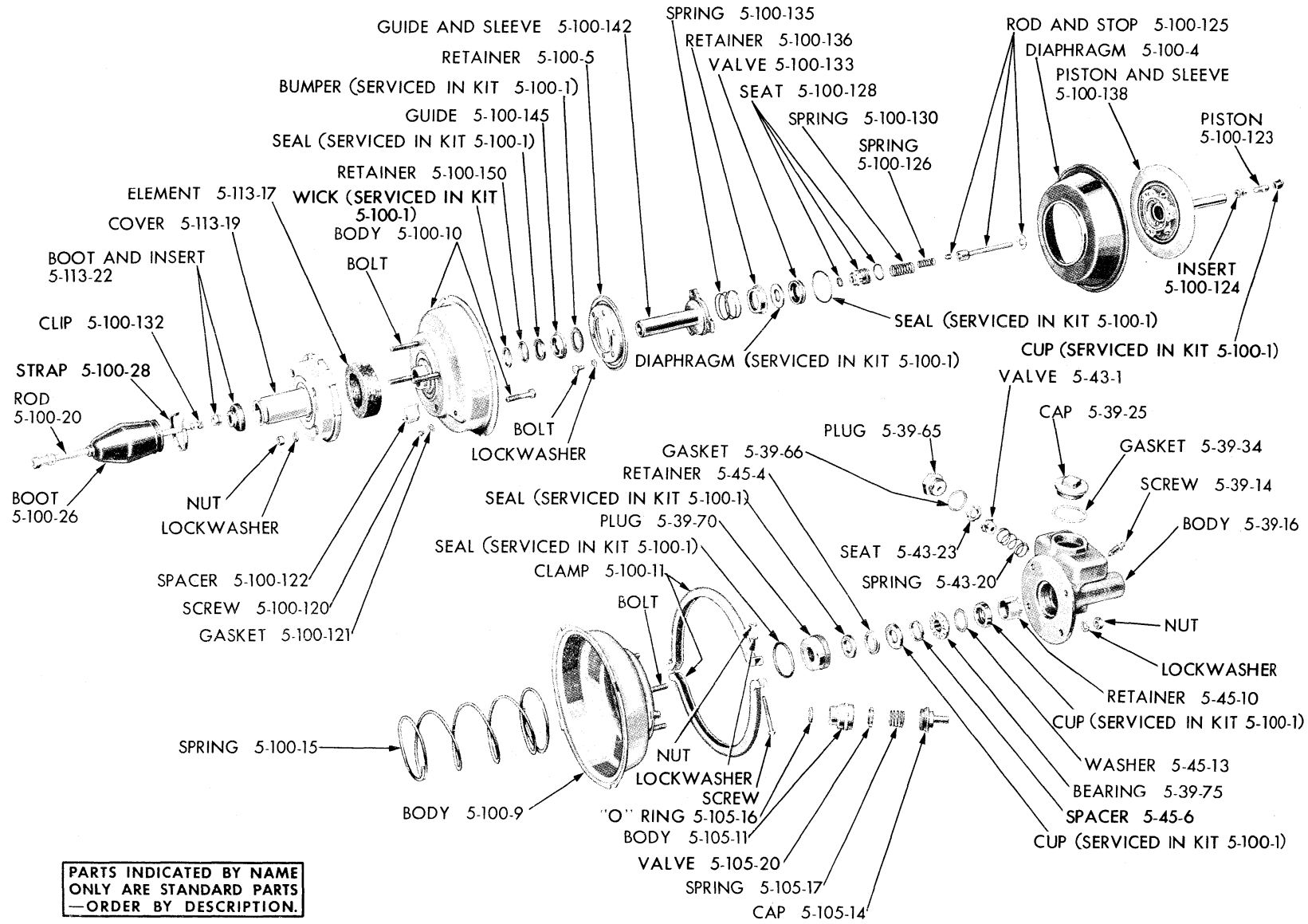
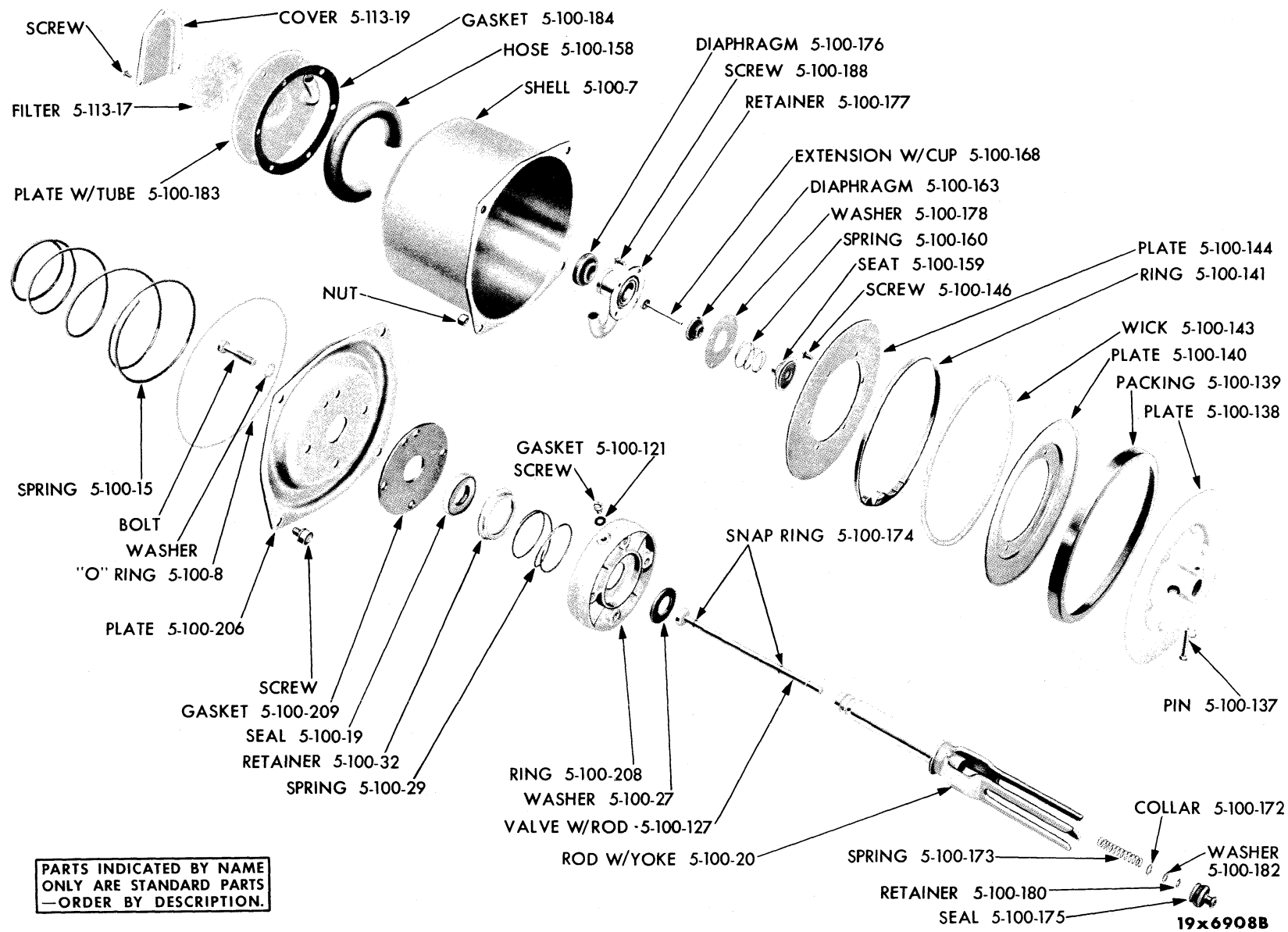


Plate 5-17

BRAKE AND CLUTCH PEDAL LINKAGE - 1957-58 MODELS



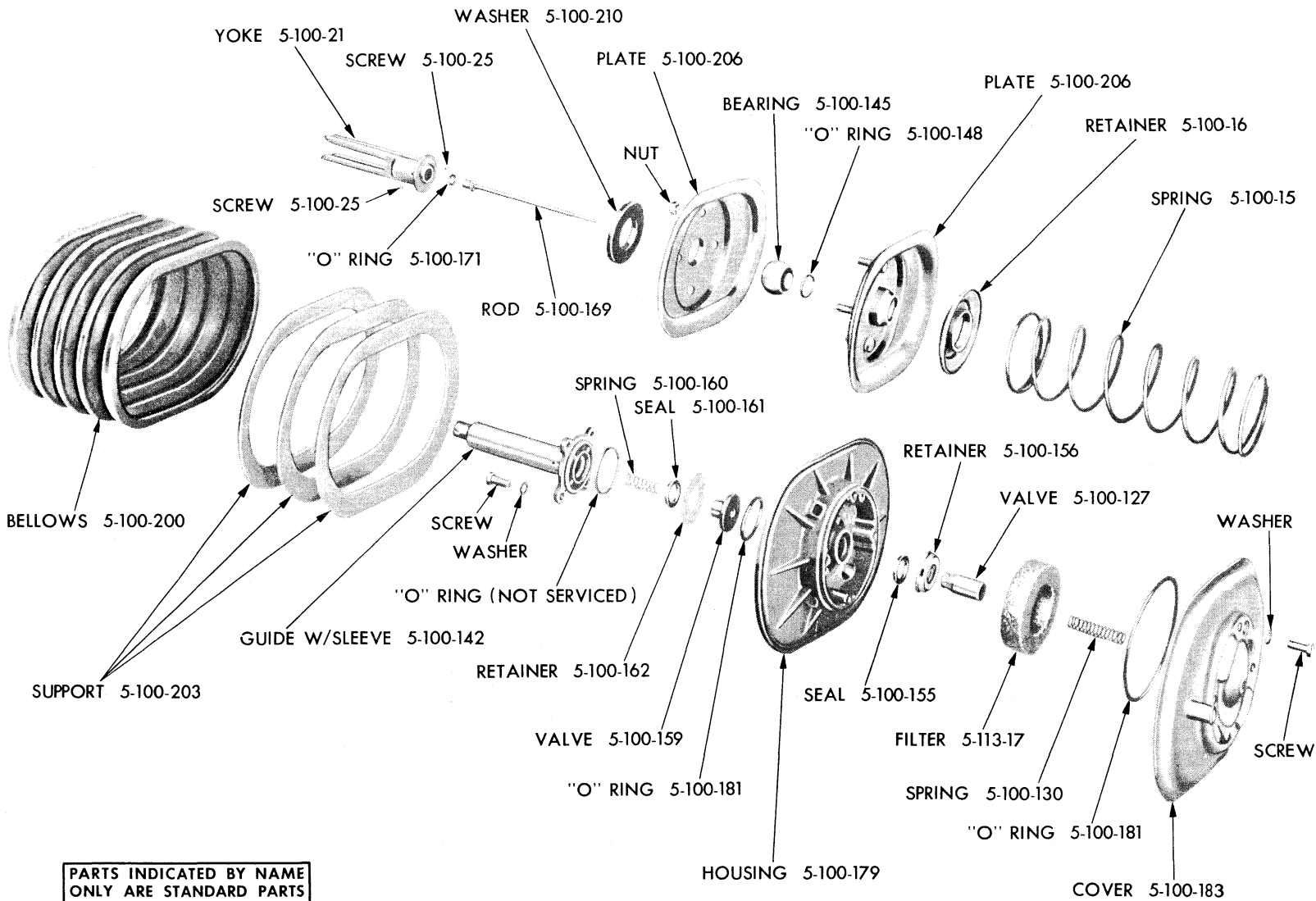
**PARTS INDICATED BY NAME
 ONLY ARE STANDARD PARTS
 —ORDER BY DESCRIPTION.**



PARTS INDICATED BY NAME
ONLY ARE STANDARD PARTS
—ORDER BY DESCRIPTION.

Plate 5-19

POWER BRAKE (1671 546, 1731 217 and 1735 620)



PARTS INDICATED BY NAME
 ONLY ARE STANDARD PARTS
 —ORDER BY DESCRIPTION.

19x6981

CODE	PART NAME AND DESCRIPTION	NO. OF CYL.	PLYMOUTH	DODGE	DESOTO	CHRYSLER AND IMPERIAL	PER CAR	PART NUMBER
5-01-0 MOPAR SUPER BRAKE FLUID								
5-01-2	BRAKE FLUID							
	8 oz. Can, Hi-Temp.	6-8	55-58	55-58	55-58	55-58	★	1879 268
	1 Pint Can, Hi-Temp.	6-8	55-58	55-58	55-58	55-58	★	1879 269
	1 Quart Can, Hi-Temp.	6-8	55-58	55-58	55-58	55-58	★	1879 270
	1 Gallon Can, Hi-Temp.	6-8	55-58	55-58	55-58	55-58	★	1879 271
	5 Gallon Can, Hi-Temp.	6-8	55-58	55-58	55-58	55-58	★	1879 272
	30 Gallon Drum, Hi-Temp.	6-8	55-58	55-58	55-58	55-58	★	1879 273
5-03-0 WHEEL BRAKE SHOE AND LINING								
5-03-1	LINING PACKAGE, Cyclebond, Std.	6	55-56	-	-	-	1	1316 217
	Except Sub., Std.	8	55-56	-	-	-	1	1603 329
	Sub., Std.	8	55-56	-	-	-	1	1603 253
	P29 Fury, Std.	8	56	-	-	-	1	1692 676
	P29 Fury, .030" O/S	8	56	-	-	-	1	1692 677
	Std.	6-8	-	55-56	-	-	1	1311 048
	.030" O/S	6	55-56	-	-	-	1	1316 218
	Except Sub., .030" O/S	8	55-56	-	-	-	1	1603 330
	Sub., .030" O/S	8	55-56	-	-	-	1	1603 254
	Heavy Duty	6-8	57-58	-	-	-	1	*1879 349
		6-8	57-58	-	-	-	1	*1879 399
	.030" O/S	6-8	-	55-56	-	-	1	1243 726
	C67, C68, C69, Std., UP TO	8	-	-	55	55 (1)	1	1311 049
	C67, C68, C69, .030" O/S, UP TO	8	-	-	55	55 (1)	1	1243 727
	C67, C68, C69, Std., AFTER	8	-	-	-	55 (1)	1	1692 653
	C67, C68, C69, .030" O/S, AFTER	8	-	-	-	55 (1)	1	1692 685
	Std., D66 4 D., Sp. Cl. Cp., Cl. Sed., D67 4 D., Sp. Cl. Cp., D72 All, 11" x 2" Brakes.	6-8	-	57	-	-	1	1818 512
	Std., D66 Sp. 4 D., Cv. Cp., D67 Sp. 4 D., Cv. Cp., D70, D71, D66 Taxi, D72 Taxi, S27, 11" x 2 1/2" Brakes	6-8	-	57	57	-	1	1818 506
	Std., LD1, LD2, Cl. Sed., Sp. Cl. Cp., 4 D., LD3-H, Sp. Cl. Cp., 4 D., 11" x 2" Brakes.	6-8	-	58	-	-	1	1879 398
	Std., LD2 Cv. Cp., Sp. 4 D., LD3-L All, LD3-H Cv. Cp., Sp. 4 D., Sub., LD2 Taxi, LD3 Taxi, LS1, LC1, 11" x 2 1/2" Brakes	8	-	58	58	58	1	1879 401
	Std., 12" Brakes, C75, C76	8	-	56-57	56-57	56-57	1	*1879 396
	.030" O/S, 12" Brakes, C75, C76, LC1, LC2, LC3	8	58	56-58	56-58	56-58	1	1653 452
	Heavy Duty, C71, C72, C75, C76, C76-300, LC2, LC3, LC3-300	8	-	-	-	56-58	1	*1843 028
	Std., 12" Brakes, LC1, LC2, LC3	6-8	58	58	58	58	1	1879 396
	Std., IM	8	-	-	-	57	1	1818 594
	LY1	8	-	-	-	58	1	1879 404
5-03-4	PLATE, Brake Pressure, Right, Complete, C70	8	-	-	-	55	2	*1406 794
	Left, Complete, C70	8	-	-	-	55	2	1406 795
	Ball, Expander	8	-	-	-	55	24	104 927
5-03-5	SHOE, w/LINING, Front Wheel, Long, 10" Brakes, Std.	6	55-56	-	-	-	4	*1136 985
	Front Wheel, Long, 11" Brakes, Std.	6-8	55-56 (2)	-	-	-	4	1557 460
	Front Wheel, Long, 11" Brakes, .030" O/S	6-8	55-56 (2)	-	-	-	4	1400 378

NOTE 1:

C67 except Est. Wgn., All
 C67 Est. Wgn. Ser. No. W55-74957
 C68 except Est. Wgn. Ser. No. N55-34085

C68 Est. Wgn. Ser. No. N55-42579
 C69 All, Ser. No. C55-10832

NOTE 2:

P28 Models are equipped with 10" Brakes only on the Rear Wheels.

P29 Models except Suburban are equipped with 10" Brakes on the Rear Wheels.

★ Indicates use as required.

Numerals in parentheses () refer to notes.

Printed in U.S.A.

☐ Indicates parts not listed in any previous parts book.

Prices and specifications subject to change without notice.

* Indicates change or addition.

1955-58 PASSENGER CAR PARTS LIST

BRAKE - SERVICE

CODE	PART NAME AND DESCRIPTION	NO. OF CYL.	PLYMOUTH	DODGE	DESOTO	CHRYSLER AND IMPERIAL	PER CAR	PART NUMBER
	Front Wheel, Long, 11" Brakes, Std., P29 Fury	8	56	-	-	-	4	1675 042
	Rear Wheel, Long, 10" Brakes, Std., P27, P29, except Sub.	6-8	55-56	-	-	-	2	*1136 985
	Rear Wheel, Short, 10" Brakes, Std., P27, P29, except Sub.	6-8	55-56	-	-	-	2	1136 986
	Rear Wheel, Short, 10" Brakes, .030" O/S, P27, P29, except Sub.	6-8	55-56	-	-	-	2	1318 302
	Rear Wheel, Long, 11" Brakes, Std., P27, P29, Sub.	8	55-56	-	-	-	2	1557 460
	Rear Wheel, Short, 11" Brakes, Std., P27, P29, Sub.	8	55-56	-	-	-	2	1557 461
	Rear Wheel, Long, 11" Brakes, Std., P29 Fury	8	56	-	-	-	2	1675 042
	Rear Wheel, Short, 11" Brakes, Std., P29 Fury	8	56	-	-	-	2	1675 043
	Front and Rear Wheel, Long, Std.	6-8	-	55-56	-	-	6	1484 722
	Rear Wheel, Short, Std.	6-8	-	55-56	-	-	2	1484 723
	Front and Rear Wheel, C67, C68, C69, Std., UP TO	8	-	-	55	55 (1)	8	*1406 768
	Front and Rear Wheel, C67, C68, C69, Std., AFTER	8	-	-	-	55 (1)	8	1671 977
	Rear Wheel, Short, .030" O/S, 10" Brake . . .	6	55	-	-	-	2	1318 302
	Front and Rear	6-8	57	-	-	-	8	*1674 067
	Heavy Duty	6-8	57	-	-	-	8	1850 214
	Front and Rear Wheel, C67, C68, C69, .030" O/S.	8	-	-	55	55	8	1484 716
	Front and Rear, 12" Brakes, Std.	8	-	56	56	56	8	1674 001
	Heavy Duty, C71, C72	8	-	-	-	56	8	1850 203
	Front, S27, 11" Brakes	6-8	-	57	57	-	4	*1674 068
	Rear, D66 4 D., Sp.C1.Cp., Cl. Sed., D67 4 D., Sp.C1.Cp., D72, 11" x 2" Brakes	6-8	-	57	-	-	4	*1674 067
	D66 Sp. 4 D., Cv. Cp., Taxi, D67 Sp. 4 D., Cv. Cp., D70, D71, D72 Taxi, S27, 11" x 2 1/2" Brakes	6-8	-	57	57	-	4	*1674 068
	Front and Rear Wheel, 11" x 2" Brakes	6-8	58	-	-	-	8	E1850 964
	LS1, LC1, Front Wheel, 11" x 2 1/2" Brakes . .	6-8	-	58	58	58	4	*1850 965
	LD1, LD2, Cl. Sed., Sp.C1.Cp., 4 D., LD3-H, Sp.C1.Cp., 4 D., Rear Wheel, 11" x 2" Brakes	6-8	-	58	-	-	4	E1850 964
	LD2, Cv. Cp., Sp. 4 D., LD3-L All, LD3-H, Cv.Cp., Sp. 4 D., Sub., LD2 Taxi, LD3 Taxi, LS1, LC1, Rear Wheel, 11" x 2 1/2" Brakes	8	-	58	58	58	4	*1850 965
	Front and Rear, 12" Brakes, C75, C76, LC1, LC2, LC3	6-8	58	57-58	57-58	57-58	8	*1850 969
	Heavy Duty, C75, C76, LC1, LC2, LC3	8	-	-	-	57-58	8	1738 898
	IM, LY1, Front and Rear Wheel Front Shoe . .	8	-	-	-	57-58	4	1738 917
	IM, LY1, Front and Rear Wheel Rear Shoe . .	8	-	-	-	57-58	4	*1850 969
	PLATE, Brake Pressure, Right, Partial, C70	8	-	-	-	55	4	1406 796
	Left, Partial, C70.	8	-	-	-	55	4	1406 797
5-03-6	SHOE, Brake, 10" Brake	6-8	55-56	-	-	-	★	859 159
	11" Brake	6-8	55-56	-	-	-	★	870 630
	Front and Rear	6-8	57-58	-	-	-	8	1674 063
	11" Brake	6-8	-	55-56	-	-	8	870 630
	C67, C68, C69.	8	-	-	55	55	8	854 060
	12" Brake	8	-	56	56	56	8	1673 996
	Front, S27, LS1, LC1, 11" Brakes	6-8	-	57-58	57-58	58	4	1674 064
	Rear, D66 4 D., Sp.C1.Cp., Cl. Sed., D67, 4 D., Sp.C1.Cp., D72, LD1, LD2, Cl. Sed., Sp.C1.Cp., 4 D., LD3-H, • Sp.C1.Cp., 4 D., 11" x 2" Brakes	6-8	-	57-58	-	-	4	1674 063

NOTE 1: C67 Est. Wgn. W55-73315 C68 except Est. Wgn. N55-44687
C68 Est. Wgn. N55-41948 C69 All C55-10674

CODE	PART NAME AND DESCRIPTION	NO. OF CYL.	PLYMOUTH	DODGE	DESOTO	CHRYSLER AND IMPERIAL	PER CAR	PART NUMBER
	D66 Sp. 4 D., Cv. Cp., Taxi, D67 Sp 4 D., Cv. Cp., D70, D71, D72 Taxi, LD2, Cv. Cp., Sp. 4 D., LD3-L All, LD3-H, Cv. Cp., Sp. 4 D., Sub., LD2 Taxi, LD3 Taxi, S27, LS1, LC1, 11" x 2 1/2" Brakes	6-8	-	57-58	57-58	58	4	*1674 064
	Front and Rear, 12" Brakes	6-8	58	57-58	57-58	57-58	8	1738 903
5-03-9	DAMPNER PACKAGE, Wheel Brake	6-8	57-58	57-58	57-58	57-58	1	E1879 511
5-03-23	SPRING, Front Wheel Brake Shoe Return, 10" Brake	6	55-56	-	-	-	4	1406 759
	Front, 11" Brakes, C67, C68, C69	6-8	55-56	55-56	55	55	4	854 059
	Rear, 10" Brakes	6-8	55-56	-	-	-	2	863 754
	Rear, 11" Brakes, C67, C68, C69	6-8	55-56	55-56	55	55	2	854 049
	Front, 11" Brakes, S27, LS1, LC1	6-8	57-58	57-58	57-58	58	4	1674 078
	Rear, 11" Brakes, S27, LS1, LC1	6-8	57-58	57-58	57-58	58	4	1674 060
	Front, 12" Brakes	8	58	56-58	56-58	56-58	4	1409 970
	Rear, 12" Brakes	8	58	56-58	56-58	56-58	4	1672 001
	Brake Pressure Plate Return, C70	8	-	-	-	55	16	1552 549
5-03-27	BUTTON, Brake Pressure Plate, C70	8	-	-	-	55	16	1327 085
5-12-0	WHEEL CYLINDER PISTON PUSH ROD							
5-12-1	ROD, C70	8	-	-	-	55	12	1402 455
	Brake Shoe Push, C67, C68, C69	6-8	55-56	55-56	55	55	8	1140 067
	Piston Push, D63 w/12" Brakes	6-8	57-58	56-58	56-58	56-58	8	1329 890
5-12-7	RETAINER, Brake Cylinder Piston Push Rod, C70	8	-	-	-	55	12	1330 944
5-13-0	WHEEL BRAKE SUPPORT							
5-13-1	SUPPORT, Front, Right, 10" Brake	6	55-56	-	-	-	1	1328 287
	Left, 10" Brake	6	55-56	-	-	-	1	1328 288
	Right, 11" Brake	6-8	55-56	55-56	-	-	1	1325 685
	Left, 11" Brake	6-8	55-56	55-56	-	-	1	1325 686
	Right, S27, LS1, LC1, 11" Brakes	6-8	57-58	57-58	57-58	58	1	1635 506
	Left, S27, LS1, LC1, 11" Brakes	6-8	57-58	57-58	57-58	58	1	1635 507
	Right, except Est. Wgn.	8	-	-	55	55	1	1328 289
	Left, except Est. Wgn.	8	-	-	55	55	1	1328 290
	Right, S22, C67, C68, Est. Wgn., C69 All	8	-	-	55	55	1	1328 741
	Left, S22, C67, C68, Est. Wgn., C69 All	8	-	-	55	55	1	1328 742
	Front, Right, D63 except D500, S23, C71, C72, except Est. Wgn., S25, S26, C75, C76, 12" Brakes, UP TO	8	-	56	56-57 (1)	56-57 (1)	1	1633 088
	Front, Left, D63 except D500, S23, C71, C72, except Est. Wgn., S25, S26, C75, C76, 12" Brakes, UP TO	8	-	56	56-57 (1)	56-57 (1)	1	1633 089
	Front, Right, D63-D500, S23, C71, C72, Est. Wgn., C70, C73, IM, 12" Brakes UP TO	8	-	56	56	56-57 (1)	1	1633 090
	Front, Left, D63-D500, S23, C71, C72, Est. Wgn., C70, C73, IM, 12" Brakes, UP TO	8	-	56	56	56-57 (1)	1	1633 091
	Front, Right, S25, S26, C75, C76, LC1, LC2, LC3, 12" Brakes, AFTER	6-8	58	57-58	57-58 (1)	57-58 (1)	1	1676 050
	Front, Left, S25, S26, C75, C76, LC1, LC2, LC3, 12" Brakes, AFTER	6-8	58	57-58	57-58 (1)	57-58 (1)	1	1676 051
	Front, Right, C76-300, LC3-300, IM, LY1, 12" Brakes, AFTER	8	-	-	-	57-58 (1)	1	*1676 052
	Front, Left, C76-300, LC3-300, IM, LY1, 12" Brakes, AFTER	8	-	-	-	57-58 (1)	1	*1676 053

NOTE 1: S25 Ser. No. 55364191 Front - Right
S25 Ser. No. 55364354 Front - Left
S26 Ser. No. 50418226 Front - Right
S26 Ser. No. 50418376 Front - Left
C75-1 Ser. No. W57-28028
C75-2 Ser. No. L57-17049
C76 Ser. No. N57-18340
IM Ser. No. C57-17931

★ Indicates use as required.

☐ Indicates parts not listed in any previous parts book.

* Indicates change or addition.

Numerals in parentheses () refer to notes.

Prices and specifications subject to change without notice.

1955-58 PASSENGER CAR PARTS LIST

BRAKE - SERVICE

CODE	PART NAME AND DESCRIPTION	NO. OF CYL.	PLYMOUTH	DODGE	DESOTO	CHRYSLER AND IMPERIAL	PER CAR	PART NUMBER
	Rear, 10" Brakes	6-8	55-56	-	-	-	2	1404 983
	Rear, 11" Brakes	6-8	55-56	55-56	-	-	2	1328 744
	Rear, S27, LS1, LC1, 11" Brakes	6-8	57-58	57-58	57-58	58	2	1635 510
	C67, C68, C69	8	-	-	55	55	2	1329 160
	Rear, D63, C71, C72, C73, 12" Brakes, UP TO	8	-	56-57	56-57	56-57 (1)	2	*1633 108
	Rear, C70	8	-	-	-	56	2	1633 109
	12" Brakes, AFTER	6-8	58	58	58	57-58 (1)	2	*1676 056
5-13-9	BOLT, Rear Support to Axle Housing, C67, C68, C69	6-8	55-56	55-56	55	55	10	854 472
	Rear Mounting, C70	8	-	-	-	55	8	1318 917
	Front Wheel Brake Mounting, 12" Brakes	8	-	56	56	56	8	1315 744
	Rear Wheel Brake Mounting, D63, 12" Brakes	8	57-58	56-58	56-58	56-58	10	1484 652
	Front Mounting, 7/16"-20 x 2 7/8"	6-8	57-58	57-58	57-58	57-58	2	1615 437
	7/16"-20 x 3 1/4"	6-8	57-58	57-58	57-58	57-58	2	1615 438
	7/16"-20 x 1 3/4"	6-8	57-58	57-58	57-58	57-58	4	1615 460
5-13-10	NUT, Wheel Brake Support Bolt, Front, D63, 12" Brakes, flat, hex.-hd.	8	57-58	56-58	56-58	56-58	★	601 014
	Tri-Slot, hex.-hd.	6-8	57-58	57-58	57-58	57-58	4	273 705
	Rear	6-8	55-58	55-58	55-58	55-58	10	120 369

5-16-0 WHEEL BRAKE DUST SHIELD

5-16-1	SHIELD,							
	w/Drum HOSE, Front Right, Partial, C70	8	-	-	-	55	1	1555 796
	w/Drum HOSE, Front Left, Partial, C70	8	-	-	-	55	1	1555 797
	Rear, C70	8	-	-	-	55	2	1400 351
	Front, Right, D63 except D500, S23, C71, C72, except Est. Wgn., S24 All, 12" Brakes	8	-	56	56	56	1	1633 094
	Front, Left, D63 except D500, S23, C71, C72, except Est. Wgn., S24 All, 12" Brakes	8	-	56	56	56	1	1633 095
	Front, Right, D63-D500, S23, C71, C72, Est. Wgn., C70, C73, All, 12" Brakes	8	-	56	56	56	1	1633 096
	Front, Left, D63-D500, S23, C71, C72, Est. Wgn., C70, C73, All, 12" Brakes	8	-	56	56	56	1	1633 097
	Rear, C71, C72, C73, 12" Brakes	8	-	56	56	56	2	1538 013
	Rear, C70	8	-	-	-	56	2	1633 110
	Front, Right	6-8	57-58	-	-	-	1	1673 806
	Left	6-8	57-58	-	-	-	1	1673 807
	Right, S27, LS1, LC1, 11" Brakes	6-8	-	57-58	57-58	58	1	1673 808
	Left, S27, LS1, LC1, 11" Brakes	6-8	-	57-58	57-58	58	1	1673 809
	Right, C75, C76, LC1, LC2, LC3, 12" Brakes	6-8	58	57-58	57-58	57-58	1	1675 030
	Left, C75, C76, LC1, LC2, LC3, 12" Brakes	6-8	58	57-58	57-58	57-58	1	1675 031
	Right, C76-300, LC3-300, IM, LY1	8	-	-	-	57-58	1	*1675 032
	Left, C76-300, LC3-300, IM, LY1	8	-	-	-	57-58	1	*1675 033
	Rear, D66, 4 D., Sp.Cl.Cp., D67, 4 D., Sp.Cl.Cp., D72, LD1 All, LD2, Cl. Sed., Sp.Cl.Cp., 4 D., LD3, Sp.Cl.Cp., 4 D., 11" x 2" Brakes	6-8	57-58	57-58	-	-	2	1635 241
	D66, Cv. Cp., Sp. 4 D., Taxi, D67, Cv. Cp., Sp. 4 D., D70, D71, D72 Taxi, LD2, Cv. Cp., Sp. 4 D., LD3, Cv. Cp., Sp. 4 D., Sub., LD2 Taxi, LD3 Taxi, S27, LS1, LC1, 11" x 2 1/2" Brakes	6-8	-	57-58	57-58	58	2	*1552 580
	12" Brakes	6-8	58	57-58	57-58	57-58	2	1675 034

5-19-0 WHEEL BRAKE SHOE ANCHOR BOLT

5-19-4	BOLT, Front Upper, C67, C68, C69	6-8	55-56	55-56	55	55	2	870 900
	Lower, C67, C68, C69	6-8	55-56	55-56	55	55	2	854 022
	Rear, C67, C68, C69	6-8	55-56	55-56	55	55	4	622 111
5-19-7	WASHER, C67, C68, C69	6-8	55-56	55-56	55	55	8	308 246
5-19-11	WASHER, Oil, C67, C68, C69	6-8	55-56	55-56	55	55	8	859 054
5-19-12	RETAINER, Oil Washer, C67, C68, C69	6-8	55-56	55-56	55	55	8	597 129
5-19-13	SPACER, Rear Bolt, C67, C68, C69	6-8	55-56	55-56	55	55	4	870 902
5-19-21	WIRE, Brake Anchor Screw Lock, C67	6-8	55-56	55-56	55	55	1	572 551

NOTE 1: C75-I Ser. No. W57-34419, C75-2 Ser. No. L57-21634, C76 Ser. No. N57-23771, C76-300 Ser. No. 3N57-2784, IM Ser. No. C57-27835

★ Indicates use as required.

Numerals in parentheses () refer to notes.

Printed in U.S.A.

□ Indicates parts not listed in any previous parts book.

Prices and specifications subject to change without notice.

Jan. 30, 1958 Supersedes Oct. 10, 1957.

* Indicates change or addition.

CODE	PART NAME AND DESCRIPTION	NO. OF CYL.	PLYMOUTH	DODGE	DESOTO	CHRYSLER AND IMPERIAL	PER CAR	PART NUMBER
5-20-0 WHEEL BRAKE AUTOMATIC ADJUSTER								
5-20-20	SPRING, C70	8	-	-	-	55	8	1321 429
5-20-21	ROD, C70	8	-	-	-	55	8	1406 793
5-20-22	WASHER, C70	8	-	-	-	55	8	1321 428
5-20-23	SLEEVE, C70	8	-	-	-	55	8	1327 084
5-20-24	BUSHING, C70	8	-	-	-	55	8	1321 427
	Ball, C70	8	-	-	-	55	88	114 072
5-20-25	WASHER, C70	8	-	-	-	55	8	1321 862
5-21-0 WHEEL BRAKE SHOE ADJUSTING PIN								
5-21-6	BUTTON, Adjusting Pin, C67, C68, C69, plastic	6-8	55-56	55-56	55	55	★	1327 047
5-22-0 WHEEL BRAKE ADJUSTING CAM DUST SHIELD SEAL								
5-22-8	SEAL, D63, 12" Brakes	6-8	57-58	56-58	56-58	56-58	8	*1633 111
5-25-0 BRAKE SHOE GUIDE ADJUSTING SPRING								
5-25-1	SPRING, C67, C68, C69	6-8	55-56	55-56	55	55	8	1122 374
	SPRING, D63, 12" Brakes	6-8	57-58	56-58	56-58	56-58	8	*1484 680
5-25-7	SPACER, Guide, C67, C68, C69	8	-	-	55	55	8	860 780
5-25-8	RETAINER, D63, 12" Brakes	6-8	57-58	56-58	56-58	56-58	8	*1486 945
5-26-0 BRAKE SHOE GUIDE SPRING								
5-26-1	SPRING, C67, C68, C69	8	-	-	55	55	8	600 071
5-26-2	RETAINER, Upper, C67, C68, C69	8	-	-	55	55	8	600 072
5-26-4	ROD, Retainer, C67, C68, C69	8	-	-	55	55	8	622 119
5-26-7	ANTI-RATTLE, Guide Spacer, C67, C68, C69	8	-	-	55	55	8	952 895
5-27-0 BRAKE PEDAL AND BUSHING								
5-27-1	PEDAL, w/o Power Brake, w/Std. Trans.	6-8	55-56	55-56	56	56	1	1614 541
	C67 except Est. Wgn., w/o Power Brake, w/Std. Trans.	8	-	-	55	55	1	1614 542
	w/Power Brake, w/Std. Trans.	6-8	55-56	55-56	55	55	1	1614 543
	w/Power Brake, w/PowerFlite, C67, C68, C69	6-8	55	55	55	55	1	1614 544
	P26, P27, D55, D56, w/o Power Brake, w/PowerFlite, C70, C71	8	55-56	55-56	56	55-56	1	1614 545
	w/o Power Brake, w/PowerFlite, C67 except Est. Wgn.	8	-	-	55	55	1	1616 914
	w/Power Brake, w/PowerFlite AFTER	6-8	56	56	56 (1)	56 (1)	1	1671 577
	w/Power Brake, w/PowerFlite UP TO	8	-	-	56 (1)	56 (1)	1	1637 808
	w/Power Brakes, w/Std. Trans., S27, LS1, LS2	6-8	57-58	57-58	57-58	-	1	*1675 249
	w/Power Brakes, w/PowerFlite and Auto. 3 Speed Trans., S27, LS1	6-8	57-58	57-58	57-58	-	1	*1675 201
	w/Power Brakes, w/Std. Trans., S25, S26, C75, C76	8	-	-	57	57	1	1739 077
	w/Power Brakes, w/PowerFlite and Auto. 3 Speed Trans., S25, S26, LS2, LS3	8	-	-	57-58	57-58	1	*1738 271
	w/o Power Brakes, w/Std. Trans., LS1, LS2, C75, C76	6-8	57-58	57-58	57-58	57	1	*1675 232
	w/o Power Brakes, w/PowerFlite and Auto. 3 Sped Trans., C75, C76, LC1, LC2, LC3	6-8	57-58	57-58	57-58	57-58	1	*1730 021
5-27-2	BUSHING, w/o Power Brake	6-8	55-56	55-56	55-56	55-56	2	1610 963
	w/Power Brake, w/PowerFlite	6-8	56	56	56	56	4	1637 779
		6-8	57-58	57-58	57-58	57-58	★	*1637 779
5-27-10	PIN, Power Brake Pedal to Arm	6-8	56-58	56-58	56-58	56-58	1	*1637 773
5-27-15	WASHER, Power Brake Pedal Trigger Spring	6-8	56-58	56-58	56-58	56-58	1	*6000 165
5-27-19	SPACER, w/Std. Trans., C71	6-8	55-56	55-56	55-56	55-56	1	1610 962

NOTE 1: S23 Serial No. 55291001 S24 Serial No. 50382001
 C70 Serial No. C56-1188 C71 Serial No. W56-46780
 C72 Serial No. N56-26838 C72-300 Serial No. 3N56-1929
 C73 Serial No. C56-8998

★ Indicates use as required. Numerals in parentheses () refer to notes. Printed in U.S.A.
 ☐ Indicates parts not listed in any previous parts book. Prices and specifications subject to change without notice.
 * Indicates change or addition. Page 5-19 Oct. 10, 1957 Supersedes Dec. 10, 1956.

1955-58 PASSENGER CAR PARTS LIST

BRAKE - SERVICE

CODE	PART NAME AND DESCRIPTION	NO. OF CYL.	PLYMOUTH	DODGE	DESOTO	CHRYSLER AND IMPERIAL	PER CAR	PART NUMBER
5-27-22	ARM, Power Brake Pedal Trigger, w/PowerFlite, C71.	6-8	56	56	56	56	1	1637 774
		6-8	57-58	57-58	57-58	57-58	1	1675 214
5-27-35	PIVOT, Power Brake Pedal Trigger	6-8	56-58	56-58	56-58	56-58	1	1635 344
5-28-O BRAKE PEDAL PAD								
5-28-8	PAD, w/Std. Trans., S23, C67, C71	6-8	55-56	55-56	55-56	55-56	1	1616 901
	w/PowerFlite	6-8	55-56	55-56	55-56	55-56	1	1556 678
	w/Std., Trans.	6-8	57-58	-	-	-	1	1616 901
	S25, S27, LS1, LS2, C75, C76	6-8	-	57-58	57-58	57	1	1736 651
	w/PowerFlite and Auto. 3 Speed Trans.	6-8	57-58	57-58	57-58	-	1	1736 652
	w/PowerFlite and Auto. 3 Speed Trans., w/o Power Brakes, C75, C76, LC1, LC2, LC3	8	-	-	-	57-58	1	1820 005
	w/PowerFlite and Auto. 3 Speed Trans., w/Power Brakes	8	-	-	-	57-58	1	1731 244
5-29-O BRAKE PEDAL SHAFT								
5-29-1	SHAFT, Power Brake Pedal, w/Auto. Trans. w/Std. Trans., S25, S27, LS1, LS2, C75, C76	6-8	56	56	56	56	1	1637 782
		6-8	57-58	57-58	57-58	57	1	1730 009
	w/PowerFlite and Auto. 3 Speed Trans.	6-8	57-58	57-58	57-58	57-58	1	1637 782
5-29-5	BOLT, Shaft, C67 w/Std. Trans.	6-8	55-56	55-56	55-56	55-56	1	1610 967
	w/Auto. Trans.	6-8	55-56	55-56	55-56	55-56	1	1610 968
5-30-O BRAKE PEDAL STOP								
5-30-9	STOP, Long, C75, C76	6-8	55-58	55-58	57-58	57-58	1	1617 376
	Short, w/o Power Brake, C67, except Est. Wgn., C71	8	-	-	55-56	55-56	1	1617 375
5-30-10	BRACKET, C75, C76	6-8	57-58	57-58	57-58	57-58	1	1730 007
5-31-O BRAKE PEDAL BRACKET								
5-31-15	BRACKET	6-8	55	55	55	55	1	*1559 745
	w/o Power Brakes	6-8	56	56	56	56	1	*1559 745
	w/Power Brake	6-8	56	56	56	56	1	1637 794
	w/o Power Brakes, C75, C76	6-8	57-58	57-58	57-58	57-58	1	1820 223
	w/Power Brakes	6-8	57-58	57-58	57-58	57-58	1	1820 222
5-31-21	WASHER, Brace, C67, C68, C69, C71, C72, C73	8	-	-	-	55-56	4	1561 065
	SCREW, w/WASHER, LC1, LC2, LC3	8	-	-	-	58	4	*6000 194
	For Reinforcement	6-8	58	58	58	58	2	*6010 019
5-34-O BRAKE PEDAL PULL-BACK SPRING								
5-34-1	SPRING, Return, w/o Power Brakes	6-8	55-58	55-58	55-58	55-58	1	1556 693
	w/Power Brakes, use with 1637 814 and 1671 546 Power Unit	6-8	56	56	56	56	1	*1671 575
	Use with 1731 216, 1731 217, 1675 213, 1735 620 and 1828 377 Power Units	6-8	56-58	56-58	56-58	56-58	1	1730 077
5-39-O MASTER CYLINDER								
5-39-1	REPAIR PACKAGE, Master Cylinder, w/PISTON	6-8	55-57	55-57	56-57	56-57	1	1603 234
	w/o Piston	6-8	55-57	55-57	56-57	56-57	1	1603 235
	C67 except Est. Wgn., C70, w/PISTON, w/o Power Brake	8	-	-	55	55	1	1316 361
	w/o Piston, w/o Power Brake	8	-	-	55	55	1	1316 360

★ Indicates use as required.

Numerals in parentheses () refer to notes.

Printed in U.S.A.

☐ Indicates parts not listed in any previous parts book.

Prices and specifications subject to change without notice.

Nov. 10, 1958 Supersedes Oct. 10, 1957.

Page 5-20

* Indicates change or addition.

CODE	PART NAME AND DESCRIPTION	NO. OF CYL.	PLYMOUTH	DODGE	DESOTO	CHRYSLER AND IMPERIAL	PER CAR	PART NUMBER
	w/PISTON, LC1, LC2, LC3, w/o Power Brakes, UP TO	6-8	58 (1)	58 (1)	58 (1)	58 (1)	1	*1879 302
	w/PISTON, LC1, LC2, LC3, w/o Power Brakes, AFTER	6-8	58 (1)	58 (1)	58 (1)	58 (1)	1	*1881 987
	w/o Piston, LC1, LC2, LC3, w/o Power Brakes	6-8	58	58	58	58	1	*1879 303
	w/o Piston, w/Power Brakes	6-8	58	58	58	58	1	*1603 235
5-39-2	w/PISTON, w/Power Brakes PACKAGE, Boot, Collar and Stop, C67 except Est. Wgn., C70	6-8	55-58	55-58	55-58	55-58	1	1316 271
5-39-3	CYLINDER C67 except Est. Wgn., w/o Power Brake, C70	6-8	55-56	55-56	56	56	1	1843 413
		8	-	-	55	55	1	1556 658
		6-8	57	57	57	57	1	1843 413
	LC1, LC2, LC3, w/o Power Brakes, UP TO	6-8	58 (1)	58 (1)	58 (1)	58 (1)	1	*1829 401
	LC1, LC2, LC3, w/o Power Brakes, AFTER	6-8	58 (1)	58 (1)	58 (1)	58 (1)	1	*1829 400
	w/Power Brakes	6-8	58	58	58	58	1	*1843 413
5-39-4	COVER PACKAGE	6-8	55-58	55-58	55-58	55-58	1	*1752 470
5-39-14	SCREW, Bleeder, w/Power Brake	6-8	55-56	55-56	55	55	1	1631 893
5-39-16	BODY, Master	6-8	55-56	55-56	55	55	1	1631 867
5-39-18	GASKET, C67 except Est. Wgn., C70	6-8	55-58	55-58	55-58	55-58	1	1559 753
5-39-20	COVER	6-8	57-58	57-58	57-58	57-58	1	*1731 225
5-39-21	SCREW, Cover, use with 1556 660 Cover. Use with 1674 306 Cover.	6-8	55	55	55	55	1	1556 675
		6-8	55-56	55-56	55-56	55-56	1	1671 571
		6-8	57-58	57-58	57-58	57-58	1	1731 227
5-39-23	GASKET, Cover Screw, C67 except Est. Wgn., C70	6-8	55	55	55	55	1	51 019
5-39-24	GASKET, Cover, C67 except Est. Wgn., C70	6-8	55-56	55-56	55-56	55-56	1	1556 663
		6-8	57-58	57-58	57-58	57-58	1	1737 171
5-39-25	CAP, Filler, w/Power Brake	6-8	55-56	55-56	55	55	1	1631 869
5-39-27	BAFFLE, Cover	6-8	57-58	57-58	57-58	57-58	1	1731 226
5-39-34	GASKET, Filler Cap, w/Power Brake	6-8	55-56	55-56	55	55	1	1631 868
5-39-65	PLUG, Secondary Connection, w/Power Brake	6-8	55-56	55-56	55	55	1	1631 880
5-39-70	PLUG, Cylinder, w/Power Brake	6-8	55	55	55	55	1	1631 888
	w/Power Brake	6-8	56	56	-	-	1	1639 519
5-39-75	BEARING, Power Piston Sleeve, w/Power Brake	6-8	55	55	55	55	1	1631 885
	w/Power Brake	6-8	56	56	-	-	1	1639 518
5-40-0 MASTER CYLINDER BOOT								
5-40-1	BOOT, C67 except Est. Wgn.	6-8	55-57	55-57	55-57	55-57	1	*1316 628
	w/o Power Brakes	6-8	58	58	58	58	1	*1828 388
	w/Power Brakes	6-8	58	58	58	58	1	*1316 628
5-40-3	COLLAR, Boot, C67 except Est. Wgn., C70	6-8	55-58	55-58	55-58	55-58	1	1316 627
5-42-0 MASTER CYLINDER REINFORCEMENT								
5-42-1	REINFORCEMENT, w/o Power Brake, C67 except Est. Wgn., C70	6-8	55	55	55	55	1	1615 610
	C71	6-8	56	56	56	56	1	1637 806
	G75, C76	6-8	57-58	57-58	57-58	57-58	1	1675 220
5-42-10	GASKET, Reinforcement, C71	6-8	56	56	56	56	1	1637 804
	C75, C76	6-8	57-58	57-58	57-58	57-58	1	1820 460
5-43-0 MASTER CYLINDER VALVE								
5-43-1	VALVE, w/o Power Brake, C67 except Est. Wgn., C70	6-8	55-58	55-58	55-58	55-58	1	1318 446
	w/Power Brake	6-8	55	55	55	55	1	1631 873

NOTE 1: LP1 Ser. No. LP1-32622 LP2 Ser. No. LP2-84351 LD1 Ser. No. LD1-6709
 LD2 Ser. No. LD2-44268 Det. Blt. LD2-L Ser. No. LD2L-6434 L. A. Blt.
 LD3 Ser. No. LD3-47113 Det. Blt. LD3-L Ser. No. LD3L-5517 L. A. Blt.
 LS1 Ser. No. LS1-12529 Det. Blt. LS1-L Ser. No. LS1L-2314 L. A. Blt.
 LS2 Ser. No. LS2-16583 LS3 Ser. No. LS3-13207
 LC1 Ser. No. LC1-14871 LC2 Ser. No. LC2-10395
 LC3 Ser. No. LC3-11456 LC3-300 Ser. No. LC3S-1564

★ Indicates use as required.

Numerals in parentheses () refer to notes.

Printed in U.S.A.

⊠ Indicates parts not listed in any previous parts book.

Prices and specifications subject to change without notice.

* Indicates change or addition.

1955-58 PASSENGER CAR PARTS LIST

BRAKE - SERVICE

CODE	PART NAME AND DESCRIPTION	NO. OF CYL.	PLYMOUTH	DODGE	DESOTO	CHRYSLER AND IMPERIAL	PER CAR	PART NUMBER
5-43-5	SEAL, Valve, C67 except Est. Wgn., C70	6-8	55-58	55-58	55-58	55-58	1	1617 379
5-43-20	SPRING, Check Valve, w/Power Brake	6-8	55-56	55-56	55	55	1	1631 872
5-43-23	SEAT, Check Valve, w/Power Brake, P28, P29, D62, D63, w/Std. Trans.	6-8	55-56	55-56	55	55	1	1631 881
5-44-0 MASTER CYLINDER PISTON								
5-44-3	PISTON	6-8	55-58	55-58	56-58	56-58	1	855 891
5-44-4	WASHER, Piston Cup	6-8	55-58	55-58	56-58	56-58	1	857 443
5-44-8	STOP, Piston, C67 except Est. Wgn., C70, LY1 LC1, LC2, LC3	6-8	55-57	55-57	55-57	55-58	1	1556 664
		6-8	58	58	58	58	1	1828 889
5-45-0 MASTER CYLINDER PISTON CUP								
5-45-4	RETAINER, Primary Cup and Seal, w/Power Brake	6-8	55-56	55-56	55	55	1	1631 890
5-45-6	SPACER, Primary Cup, w/Power Brake	6-8	55-56	55-56	55	55	1	1631 886
5-45-8	CUP, Secondary	6-8	55-58	55-58	56-58	56-58	1	* 958 659
5-45-10	RETAINER, Secondary Cup, w/Power Brake	6-8	55-56	55-56	55	55	1	1631 882
5-45-13	WASHER, Secondary Cup Support, w/Power Brake	6-8	55	55	55	55	1	1631 884
	w/Power Brake	6-8	56	56	-	-	1	1639 517
5-46-0 MASTER CYLINDER PISTON RETURN SPRING								
5-46-1	SPRING, C67 except Est. Wgn.	6-8	55-58	55-58	55-58	55-58	1	1738 268
	C70	8	-	-	-	55	1	1318 443
5-47-0 MASTER CYLINDER PISTON PUSH ROD								
5-47-2	ROD	6-8	55-56	55-56	56	56	1	862 850
	C67 except Est. Wgn., C70	8	-	-	55	55	1	1318 438
	LY1	6-8	57	57	57	57-58	1	1731 202
	LC1, LC2, LC3	6-8	58	58	58	58	1	1828 660
5-47-3	END, Piston Push Rod, C67 except Est. Wgn., C70	6-8	55-56	55-56	55-56	55-56	1	1559 787
		6-8	57-58	57-58	57-58	57-58	1	1675 218
5-47-4	BOLT, Piston Push Rod End, w/o Power Brakes, C67 except Est. Wgn., C70, C71	6-8	55-58	55-58	55-58	55-58	1	1616 915
	PIN, Push Rod End, w/Power Brake	6-8	56-58	56-58	56-58	56-58	1	1637 784
5-47-6	WASHER, Push Rod End, w/Power Brake	6-8	56-58	56-58	56-58	56-58	1	1637 805
	w/o Power Brakes, C75, C76	6-8	57-58	57-58	57-58	57-58	1	120 382
5-47-7	RETAINER, Push Rod End Pin, w/Power Brake	6-8	56-58	56-58	56-58	56-58	1	1671 569
	NUT, w/o Power Brakes, C75, C76	6-8	57-58	57-58	57-58	57-58	1	271 506
5-47-10	RING, Master Cylinder Piston Push Rod, LC1, LC2, LC3.	6-8	58	58	58	58	1	1737 167
5-52-0 MASTER CYLINDER BRAKE TUBE								
5-52-3	NUT	6-8	57-58	57-58	57-58	57-58	1	1739 226
5-52-10	TUBE, Power Brake to Hose Bracket, D55	6-8	55	55	-	-	1	861 619
		6-8	56	56	-	-	1	861 720
	1/4" x 16" long, C67	8	-	-	55-56	55-56	1	861 604
	TUBE, Master Cylinder to Hose Bracket, w/o Power Brake	6-8	55	55	-	-	1	861 734
	Nut, C67	8	-	-	55	55	2	137 397
5-52-32	CONNECTOR, Master Cylinder Tube	6-8	57-58	57-58	57-58	57-58	1	1828 396
5-53-0 BRAKE FRAME TUBE								
5-53-3	TUBING, 25 foot roll, 3/16" O.D.	6-8	55-58	55-58	55-58	55-58	★	1843 251
	1/4" O.D.	6-8	55-58	55-58	55-58	55-58	★	1843 252
	5/16" O.D.	6-8	55-58	55-58	55-58	55-58	★	1843 253
	3/8" O.D.	6-8	55-58	55-58	55-58	55-58	★	1843 254
5-53-4	COVER, Tube, 25 foot roll, for 3/16" O.D. Tube	6-8	55-58	55-58	55-58	55-58	★	1843 257
	For 1/4" O.D. Tube	6-8	55-58	55-58	55-58	55-58	★	1843 258
	For 5/16" O.D. Tube	6-8	55-58	55-58	55-58	55-58	★	1843 259

★ Indicates use as required.

Numerals in parentheses () refer to notes.

Printed in U.S.A.

☐ Indicates parts not listed in any previous parts book.
Nov. 10, 1958 Supersedes Jan. 30, 1958.

Prices and specifications subject to change without notice.

* Indicates change or addition.

CODE	PART NAME AND DESCRIPTION	NO. OF CYL.	PLYMOUTH	DODGE	DESOTO	CHRYSLER AND IMPERIAL	PER CAR	PART NUMBER
5-53-34	TUBE, Hose Tee to Right Hose	6-8	55	55-56	56	56	1	1124 557
	Hose Tee to Left Hose	6-8	56	-	-	-	1	1124 555
	Rear Brake Extension, P29 Sub. w/Power Package	6-8	55-56	-	-	-	1	1124 535
	Front Hose Tee to Rear Hose Bracket Tube, except Cv. Cp.	6-8	-	55-56	56	56	1	1124 547
	Front Tee to Rear Hose, C67, C68, C71, C72, Cv. Cp., C73 All	8	56	-	-	-	1	1124 547
	S21, S22, C67, C68, except Cv.Cp. and Est. Wgn., C69 All	6-8	-	55-56	55-56	56	1	1124 565
	Hose Tee to Right Hose, w/NUTS, C67, C68, C69 Left, C67, C68, C69	8	-	-	55	55	1	1124 563
	Brake Hose Tee to Rear Hose, C68, C72, Est. Wgn., C70 All	8	-	-	-	55-56	1	1124 560
	Tee to Rt. Hose, P31, LP2	8	57-58	-	-	-	1	861 560
	Tee to Lt. Hose	6-8	57-58	-	-	-	1	1124 544
	Tee to Rear Hose, S27, LS1, LC1	6-8	57-58	57-58	57-58	58	1	1124 511
	Tee to Rt. Hose, S27, LS1, LC1	6-8	-	57-58	57-58	58	1	1124 556
	Tee to Lt. Hose, S27, LS1, LC1	6-8	-	57-58	57-58	58	1	1124 545
	Tee to Lt. Hose, S25, S26, LS2, LS3	8	-	-	57-58	-	1	1124 554
	Tee to Rt. Hose, LC2, LC3, LY1	8	-	-	-	57-58	1	1124 560
	Tee to Lt. Hose, LC2, LC3, LY1	8	-	-	-	57-58	1	1124 550
	Tee to Rear Hose, S25, S26, LS2, LS3, C75, C76, LC2, LC3	8	-	-	57-58	57-58	1	1124 564
	IM, LY1	8	-	-	-	57-58	1	1124 565
5-54-0 REAR AXLE BRAKE TUBE								
5-54-1	TUBE, Right, S27, LS1	6-8	55-58	55-58	55-58	55-56	1	861 559
	Left, C70	6-8	55-56	56	-	55-56	1	861 546
	Left, S27, LS1	6-8	57-58	57-58	57-58	-	1	861 542
	Left, C67, C68, C69, C71, C72	8	-	-	55-56	55-56	1	861 547
	Left, S25, S26, LS2, LS3, C75, C76, LC1, LC2, LC3	8	-	-	57-58	57-58	1	861 543
	Left, C73	8	-	-	-	56	1	861 558
	Right, IM, LY1	8	-	-	-	57-58	1	861 558
	Left, IM, LY1	8	-	-	-	57-58	1	861 549
5-55-0 WHEEL CYLINDER CONNECTING TUBE								
5-55-1	TUBE, Front Wheel, P26, P27, P28, P29, 10" Brakes	6	55-56	-	-	-	2	1117 809
	P27, P28, P29, 11" Brakes	6-8	55-56	55-56	-	-	2	1117 810
	Right, S27, LS1, LC1, 11" Brakes	6-8	57-58	57-58	57-58	58	1	1633 092
	Left, S27, LS1, LC1, 11" Brakes	6-8	57-58	57-58	57-58	58	1	1633 093
	C67, C68, C69	8	-	-	55	55	2	1312 673
	C70	8	-	-	-	55	2	1406 792
	Right, 12" Brakes	8	58	56-58	56-58	56-58	1	1558 192
	Left, 12" Brakes	8	58	56-58	56-58	56-58	1	1558 191
	TUBE, Rear Wheel, C70	8	-	-	-	55	2	1325 639
5-56-0 BRAKE TUBE OR HOSE CLIP								
5-56-1	CLIP, Front Wheel Brake Hose, LS2, LS3, LC2, LC3, LY1	8	-	-	58	58	2	*1856 642
5-56-2	CLIP, Hose Tee to Right Hose Tube	6-8	55-58	57-58	56-58	56-58	★	1119 423
	Hose Tee to Rear Hose Bracket Tube	6-8	55-58	55-58	56-58	55-58	★	1119 423
5-57-0 BRAKE TUBE BRACKET								
5-57-2	BRACKET, Front	6-8	55-56	55-56	55-56	55-56	2	1141 052
	Front, S27, UP TO	6-8	57 (1)	57 (1)	57 (1)	-	2	1672 495
	Front, S27, LS1, LC1, AFTER	6-8	57-58 (1)	57-58 (1)	57-58 (1)	58	2	1739 248

NOTE 1: P30 Ser. No. 14339568 P31 Ser. No. 16189238
 D66 Ser. No. 35202576 D67 Ser. No. 37265711
 D70 Ser. No. 38001363 D71 Ser. No. 38535145
 D72 Ser. No. 32262217 S27 Ser. No. 58011560

★ Indicates use as required.

Numerals in parentheses () refer to notes.

Printed in U.S.A.

□ Indicates parts not listed in any previous parts book.

Prices and specifications subject to change without notice.

* Indicates change or addition.

1955-58 PASSENGER CAR PARTS LIST

BRAKE - SERVICE

CODE	PART NAME AND DESCRIPTION	NO. OF CYL.	PLYMOUTH	DODGE	DESOTO	CHRYSLER AND IMPERIAL	PER CAR	PART NUMBER
	S25, S26, LS2, LS3, LC2, LC3, LY1	8	-	-	57-58	57-58	2	1672 494
	Rear, P26, P27, Sub. UP TO, P28, P29, except Sub.	6-8	55-56 (1)	-	-	-	1	1617 334
	Rear, P26, P27, P28, P29, D62, D63, Sub., AFTER	6-8	55-56 (1)	56	-	-	1	1141 052
	Rear, D62, D63, except Sub.	6-8	-	55-56	-	-	1	1614 803
	Rear Hose, except C71, C72, Est. Wgn.	8	-	-	55-56	55-56	1	1614 801
	Rear, C71, C72, Est. Wgn.	8	-	-	-	56	1	1614 802
	Rear, C73	8	-	-	-	56	1	1617 902
	Rear, LS1, LC1	6-8	57-58	58	58	58	1	1828 501
	C75, C76, LS2, LS3, LC2, LC3.	6-8	-	57-58	57-58	57-58	1	1672 494
	IM, LY1	8	-	-	-	57-58	1	1737 437
	Power Brake Tube to Hose Tube.	6-8	55-56	55	-	-	1	1617 922
	BRACKET, Master Cylinder Tube to Hose Tube	6-8	-	56	-	-	1	1617 922
		8	-	-	55-56	55-56	1	1614 802
5-58-0 BRAKE TUBE TEE								
5-58-1	TEE, Rear Axle Tube, except C73, w/o Dual Exhaust	6-8	55-56	55-56	55-56	55-56	1	1118 161
	C73	8	-	-	-	56	1	1673 330
	w/Dual Exhaust	6-8	56	56	-	-	1	1634 959
		6-8	57-58	57-58	57-58	57-58	1	1118 161
	Master Cylinder Hose to Brake Tube	6-8	55-56	55-56	56	56	1	1617 876
		8	-	-	55	55	1	1614 800
		6-8	57-58	-	-	-	1	*1737 439
	S27, LS1, LC1	6-8	-	57-58	57-58	58	1	*1737 445
	S25, S26, LS2, LS3, LC2, LC3, LY1	8	-	-	57-58	57-58	1	1737 436
5-62-0 BRAKE FLEXIBLE HOSE								
5-62-1	HOSE, Front, P26, w/Power Brake, P27, P28, P29, C67, C68, C69, C71, C72, C73, All Front, P26 w/o Power Brake, AFTER	6-8	55-56	55-56	55-56	55-56	2	1119 401
	HOSE, Front, w/o Power Brake, P26, UP TO Front, C70	6	55 (2)	-	-	-	2	1121 324
	Front, C70	6	55 (2)	-	-	-	2	1119 401
	Front, C70	8	-	-	-	55	2	1554 347
	Front, C70	8	-	-	-	56	2	1119 401
	Front, S27, LS1, LC1	6-8	57-58	57-58	57-58	58	2	1739 249
	Front, S25, S26, LS2, LS3, LC2, LC3, LY1	8	-	-	57-58	57-58	2	1739 215
	Rear, UP TO, P28, P29, D62, D63, except Sub., C67, C68, C69	6-8	55-56 (1)	55-56	55-56	55-56	1	1119 402
	Rear, 17" long, AFTER, P28, P29, D62, D63, Sub.	6-8	55-56 (1)	56	-	-	1	1617 910
	Rear, w/Dual Exhaust.	6-8	57	-	-	-	1	1739 249
	Rear, P30, P31, w/o Dual Exhaust, C75, C76, LC1, LC2, LC3, UP TO	6-8	57 (3)	57-58	57-58	57-58	1	1739 215
	P30, P31, w/o Dual Exhaust, AFTER	6-8	57-58 (3)	-	-	-	1	1739 249
	Rear, IM, LY1	8	-	-	-	57-58	1	1739 216
5-62-7	GASKET, Front Wheel Cylinder Hose	6-8	55-58	55-58	55-58	55-58	2	1406 748
5-62-13	HOSE, Master Cylinder Tube Bracket to Tube Tee, w/o PowerFlite	6-8	55-56	55-56	55	55	1	1554 357
	w/Auto. Trans.	6-8	55-56	55-56	56	56	1	1614 799
	HOSE, Master Cylinder to Brake Tube Tee.	6-8	57-58	57-58	57-58	57-58	1	1739 246
5-62-20	LOCK, Brake Flexible Hose	6-8	55-58	55-58	55-58	55-58	*	* 392 917
5-63-0 WHEEL CYLINDER PACKAGE								
5-63-1	PACKAGE, Wheel Cylinder Service, C67, C68, C69	6-8	55-56	55-56	55	55	4	947 580
	Front Wheel, C70	8	-	-	-	55	2	1450 449
	Rear Wheel, C70	8	-	-	-	55	2	1450 450
	Wheel Cylinder Service	6-8	57-58	56-58	56-58	56-58	4	*1818 639
5-63-3	PISTON PACKAGE, Wheel Cylinder (front and rear expander type) C67, C68, C69	6-8	55-56	55-56	55	55	4	1643 178
	D63 w/12" Brakes.	6-8	57-58	56-58	56-58	56-58	4	1818 834

NOTE 1: P26 Sub. 13942398, P27 Sub. 15762168.

NOTE 2: DETROIT EVANSVILLE LOS ANGELES
 P26 Serial No. 13888297 20757742 25182576

NOTE 3: P30 Ser. No. 14324165 P31 Ser. No. 16159166

* Indicates use as required.

Numerals in parentheses () refer to notes.

Printed in U.S.A.

⊔ Indicates parts not listed in any previous parts book.

Prices and specifications subject to change without notice.

Nov. 10, 1958 Supersedes Jan. 30, 1958.

* Indicates change or addition.

CODE	PART NAME AND DESCRIPTION	NO. OF CYL.	PLYMOUTH	DODGE	DESOTO	CHRYSLER AND IMPERIAL	PER CAR	PART NUMBER
5-64-0 WHEEL BRAKE CYLINDER ASSEMBLY								
5-64-1	CYLINDER, Front Wheel, Upper, Right, C67, C68, C69	6-8	55-56	55-56	55	55	1	1311 532
	Upper, Left, C67, C68, C69	6-8	55-56	55-56	55	55	1	1311 533
	Lower, Right, C67, C68, C69	6-8	55-56	55-56	55	55	1	*1265 944
	Lower, Left, C67, C68, C69	6-8	55-56	55-56	55	55	1	*1265 945
	Upper, Right, C70	8	-	-	-	55	1	1406 776
	Upper, Left, C70	8	-	-	-	55	1	1406 777
	Lower, Right, C70	8	-	-	-	55	1	1552 514
	Lower, Left, C70	8	-	-	-	55	1	1552 515
	Rear Wheel, C67, C68, C69	6-8	55-56	55-56	55	55	2	1311 536
	Rear Wheel, Upper, Right, C70	8	-	-	-	55	1	1406 788
	Upper, Left, C70	8	-	-	-	55	1	1406 789
	Lower, Right, C70	8	-	-	-	55	1	1406 790
	Lower, Left, C70	8	-	-	-	55	1	1406 791
	Front Wheel, Upper, Right, 12" Brakes	8	-	56	56	56	1	1631 814
	Upper, Left, 12" Brakes	8	-	56	56	56	1	1631 815
	Lower, Right, 12" Brakes	8	-	56	56	56	1	1631 816
	Lower, Left, 12" Brakes	8	-	56	56	56	1	1631 817
	Rear Wheel, 12" Brakes	8	-	56	56	56	2	1409 973
	Front, Upper, Right	6-8	57-58	57-58	57-58	57-58	1	1631 814
	Upper, Left	6-8	57-58	57-58	57-58	57-58	1	1631 815
	Lower, Right	6-8	57-58	57-58	57-58	57-58	1	1631 816
	Lower, Left	6-8	57-58	57-58	57-58	57-58	1	1631 817
	Rear	6-8	57-58	57-58	57-58	57-58	2	1409 973
5-64-15	ANCHOR, Front Wheel Cylinder to Knuckle, C70	8	-	-	-	55	8	1325 378
5-64-16	PIN, Front Wheel Cylinder Anchor, C70	8	-	-	-	55	8	1402 455
5-64-18	RETAINER, Front Wheel Cylinder Anchor Pin, C70	8	-	-	-	55	4	1330 944
5-64-21	BOOT, Front Wheel Cylinder Anchor Pin, C70	8	-	-	-	55	4	1405 010
5-64-25	SPRING, Front Wheel Anti-Rattle, C70	8	-	-	-	55	2	1552 520
5-67-0 WHEEL CYLINDER BLEEDER SCREW								
5-67-1	SCREW	6-8	55-58	55-58	55-58	55-58	6	1123 005
5-69-0 WHEEL CYLINDER BOOT OR SEAL								
5-69-1	BOOT, C67, C68, C69	6-8	55-58	55-58	55-58	55-58	8	1136 872
	Brake Cylinder, C70	8	-	-	-	55	12	1402 454
5-70-0 WHEEL CYLINDER PISTON								
5-70-1	PISTON, C67, C68, C69	6-8	55-56	55-56	55	55	8	1140 493
	12" Brakes	8	-	56	56	56	8	1312 830
	Front Wheel, C70	8	-	-	-	55	8	1405 009
	Rear, C70	8	-	-	-	55	8	1402 452
		6-8	57-58	57-58	57-58	57-58	8	1312 830
5-71-0 WHEEL CYLINDER PISTON CUP								
5-71-1	CUP, C67, C68, C69	6-8	55-56	55-56	55	55	8	854 038
	12" Brakes	8	-	56	56	56	8	*1674 080
	Front Wheel, C70	8	-	-	-	55	4	77 526
	Rear, C70	8	-	-	-	55	8	639 056
		6-8	57-58	57-58	57-58	57-58	8	1674 080
5-71-2	SPRING, Front Wheel Cylinder Piston Cup Expander, C67, C68, C69	6-8	55-56	55-56	55	55	4	1141 029
	Front, 12" Brakes	8	-	56	56	56	4	1614 894
	Front, C70	8	-	-	-	55	4	1318 490
	Rear, C67, C68, C69	6-8	55-56	55-56	55	55	2	1140 556
	Rear, 12" Brakes	8	-	56	56	56	2	1633 106
	Rear, C70	8	-	-	-	55	8	1325 663
	Front Wheel	6-8	57-58	57-58	57-58	57-58	4	1614 894
	Rear Wheel	6-8	57-58	57-58	57-58	57-58	2	1633 106

★ Indicates use as required.

Numerals in parentheses () refer to notes.

Printed in U.S.A.

☐ Indicates parts not listed in any previous parts book.

Prices and specifications subject to change without notice.

* Indicates change or addition.

Page 5-25

Nov. 10, 1958 Supersedes Oct. 10, 1957.

1955-58 PASSENGER CAR PARTS LIST

BRAKE - SERVICE

CODE	PART NAME AND DESCRIPTION	NO. OF CYL.	PLYMOUTH	DODGE	DESOTO	CHRYSLER AND IMPERIAL	PER CAR	PART NUMBER
5-72-0 WHEEL CYLINDER PISTON CUP EXPANDER								
5-72-1	EXPANDER, C67, C68, C69	6-8	55-56	55-56	55	55	8	1140 752
	12" Brakes	8	-	56	56	56	8	634 636
	Front Wheel, C70	8	-	-	-	55	4	634 637
	Rear Wheel, C70	8	-	-	-	55	8	634 639
	Front and Rear Wheel	6-8	57-58	57-58	57-58	57-58	8	1674 081
5-100-0 POWER BRAKE POWER UNIT								
5-100-1	KIT, Repair (for 1555 313 Power Brake Power Unit)	6-8	55	55	55	55	1	1634 497
	KIT, Repair (for field installed Power Brake)	6-8	55-58	55-58	55-58	55-58	1	1818 602
	KIT, Repair (for 1639 515 Power Brake Power Unit)	6-8	56	56	-	55	1	1639 526
	KIT, Repair (for 1637 814, 1731 216, 1675 213 and 1828 377 Power Unit)	6-8	56-58	56-58	56-58	56-58	1	1675 001
	KIT, Repair (for 1671 546 and 1731 217 Power Unit)	8	-	-	56	56	1	1675 147
	KIT, Repair (for 1735 620 Power Unit)	6-8	57-58	57-58	57-58	57-58	1	*1940 788
5-100-2	BRAKE, Power, w/Master CYLINDER, Model 105-1300A, C67, C68, C69	6-8	55	55	55	55	1	*1639 515
	w/o PowerFlite	6-8	56	56	-	-	1	1639 515
	w/o Master Cylinder, w/PowerFlite, S23, S24, AFTER, C71	6-8	56	56	56 (1)	56	1	*1637 814
	w/o Master Cylinder, w/PowerFlite, C71 (also specify 1-1730 077 Spring)	6-8	56	56	-	56	1	1731 216
	w/PowerFlite, S23, S24, UP TO, C70, C72, C73 (also specify 1-1730 077 Spring)	8	-	-	56 (1)	56	1	*1731 217
	C68-300	8	-	-	-	55	1	1639 512
	Bellows Type, except Adventurer	6-8	57-58	57-58	57-58	57-58	1	1675 213
	Bellows Type, Adventurer	8	-	-	57-58	-	1	1828 377
	Cylinder Type	6-8	57-58	57-58	57-58	57-58	1	1735 620
5-100-3	KIT, Cylinder Seal (for 1735 620 Power Unit)	6-8	57-58	57-58	57-58	57-58	1	*1940 787
5-100-34	LEVER, C67, except Est. Wgn., C68, C69	6-8	55	55	55	55	1	1614 568
	w/o PowerFlite	6-8	56	56	-	-	1	1614 568
	w/PowerFlite, AFTER	6-8	56	56	56 (2)	56 (2)	1	*1671 572
	w/Auto. Trans., UP TO	8	-	-	56 (2)	56 (2)	1	*1637 810
	S27, LS1	6-8	57-58	57-58	57-58	-	1	1675 202
	S25, S26, LS2, LS3	8	-	-	57-58	57-58	1	1738 272
5-100-35	BUSHING, Lever Pin	6-8	55	55	55	55	2	*1610 963
	w/o PowerFlite	6-8	56	56	-	-	2	1610 963
	w/Auto. Trans.	6-8	56	56	56	56	2	1637 793
		6-8	57-58	57-58	57-58	57-58	2	1637 793
5-100-37	SPACER, Lever	6-8	55	55	55	55	1	1610 962
	w/o PowerFlite	6-8	56	56	-	-	1	1610 962
5-100-41	BOLT, Lever Shaft	6-8	55	55	55	55	1	1610 968
	w/o PowerFlite	6-8	56	56	-	-	1	1610 968
5-100-105	REINFORCEMENT, Brake and Master Cylinder w/o PowerFlite	6-8	55	55	55	55	1	1617 033
	Upper, w/Auto. Trans.	6-8	56	56	-	-	1	1635 343
	Lower, w/Auto. Trans.	6-8	56	56	56	56	1	1637 786
		6-8	56	56	56	56	1	1637 788
		6-8	57-58	57-58	57-58	57-58	1	1675 223
5-100-107	GASKET, Brake and Master Cylinder Reinforcement	6-8	55	55	55	55	1	1556 691
	Upper, w/Auto. Trans.	6-8	56	56	56	56	1	1637 789
	Lower, w/Auto. Trans.	6-8	56	56	56	56	1	1637 790
		6-8	57-58	57-58	57-58	57-58	1	1820 460

NOTE 1: Ser. No. S23 - 55260275

S24 - 50368189

NOTE 2: S23 Ser. No. 55291001
 C70 Ser. No. C56-1188
 C72 Ser. No. N56-26838
 C73 Ser. No. C56-8998

S24 Ser. No. 50382001
 C71 Ser. No. W56-46780
 C72-300 Ser. No. 3N56-1929

★ Indicates use as required.

Numerals in parentheses () refer to notes.

Printed in U.S.A.

☐ Indicates parts not listed in any previous parts book.
 Nov. 10, 1958 Supersedes Oct. 10, 1957.

Prices and specifications subject to change without notice.

* Indicates change or addition.

CODE	PART NAME AND DESCRIPTION	NO. OF CYL.	PLYMOUTH	DODGE	DESOTO	CHRYSLER AND IMPERIAL	PER CAR	PART NUMBER
5-100-110	SCREW, Power Brake Adjusting, w/Auto. Trans.	6-8	56	56	56	56	1	1637 780
	Cam, Adjusting	6-8	57-58	57-58	57-58	57-58	1	1737 157
5-100-111	COLLAR, Adjusting Cam	6-8	56-58	56-58	56-58	56-58	1	1674 302
5-100-112	BUSHING, P28, P29, D62, D63, w/Std. Trans.	6-8	55-56	55-56	55	55	6	1559 552
5-100-113	WASHER, Power Brake Adjusting Screw, Plain	6-8	56-58	56-58	56-58	56-58	1	1685 757
	WASHER, Lock	6-8	57-58	57-58	57-58	57-58	1	1737 158
5-100-115	LINK, P28, P29, D62, D63, w/Std. Trans. .	6-8	55-56	55-56	55	55	2	1613 809
5-100-117	PIN, Clevis, P28, P29, D62, D63, w/Std. Trans.	6-8	55-56	55-56	55	55	3	1613 864
5-100-118	RETAINER, Pin, P28, P29, D62, D63, w/Std. Trans.	6-8	55-56	55-56	55	55	6	790 839
5-100-152	KIT, Piston Packing, use with 1671 546 and 1731 217 Power Unit	8	-	-	56	56	1	1673 621
	For 1603 252 and 1818 530 Power Unit	6-8	55-58	55-58	55-58	55-58	1	1653 475
	For 1735 620 Power Unit	6-8	57-58	57-58	57-58	57-58	1	1820 003
5-100-165	PACKAGE, Power Brake Poppet Valve, for 1603 252 and 1818 530 Power Unit	6-8	55-58	55-58	55-58	55-58	1	1692 615

COMPONENT PARTS FOR POWER BRAKE POWER UNITS

PART TYPE CODE	PART NAME	POWER UNITS						
		1555 313	1637 814 AND 1731 216	1639 512	1639 515	1671 546 AND 1731 217	1675 213 AND 1828 377	1735 620
5-100-4	DIAPHRAGM	1631 930	----	1631 930	1631 930	----	----	----
5-100-5	RETAINER, Diaphragm	1631 931	----	1631 931	1631 931	----	----	----
5-100-7	SHELL	----	----	----	----	1675 134	----	1739 852
5-100-8	"O" Ring, Shell	----	----	----	----	1675 135	----	1739 853
5-100-9	BODY, Vacuum Chamber, Front Half	1631 894	----	1631 894	1631 894	----	----	----
	Vacuum Chamber, Rear Half	*1631 934	----	*1631 934	*1631 934	----	----	----
5-100-11	CLAMP, Body	1631 942	----	1631 942	1631 942	----	----	----
5-100-15	SPRING, Return	1631 897	1674 964	1631 897	1631 897	1675 015	----	1739 839
5-100-16	RETAINER, Return Spring.	----	1674 965	----	----	----	----	----
5-100-19	SEAL, Piston Rod	----	----	----	----	1675 100	----	----
5-100-20	ROD, Piston	1631 952	----	1631 952	1631 952	1675 096	----	1739 842
5-100-21	YOKE	----	*1820 011	----	----	----	1820 011	----
5-100-23	END, Push Rod	1556 672	----	1556 672	1556 672	----	----	----
5-100-25	SCREW, Set	----	1675 003	----	----	----	1675 003	----
5-100-26	BOOT, Push Rod	1631 951	----	1631 951	1631 951	----	----	----
5-100-27	WASHER, Piston Rod Stop Cushion .	----	----	----	----	1675 099	----	1675 099
5-100-28	STRAP, Push Rod Retainer	1634 494	----	1634 494	1634 494	----	----	----
5-100-29	SPRING, Piston Rod Seal Retaining	----	----	----	----	1675 102	----	----
5-100-32	RETAINER, Piston Rod Seal	----	----	----	----	1675 101	----	----
5-100-39	BEARING, Piston Rod	----	----	----	----	----	----	*1940 790
5-100-120	SCREW, Inspection Hole	*1673 634	1673 634	*1673 634	*1673 634	132 096	1673 634	132 096
5-100-121	GASKET, Inspection Hole Screw . .	1631 940	1674 993	1631 940	1631 940	1675 137	1674 993	1675 137
5-100-122	SPACER, Air Cleaner Cover.	1631 943	----	1631 943	1631 943	----	----	----
5-100-123	PISTON, Reaction	1631 910	----	1631 910	1631 910	----	----	----
5-100-124	INSERT, Reaction Piston Dome Cup.	1631 911	----	1631 911	1631 911	----	----	----
5-100-125	ROD and STOP, Reaction Piston . .	1631 904	----	1631 904	1631 904	----	----	----
5-100-126	SPRING, Reaction Piston Rod. . . .	1631 914	----	1631 914	1631 914	----	----	----
5-100-127	VALVE, Air	----	1674 944	----	----	1675 103	1674 944	1739 847
5-100-130	SPRING, Air Valve, for 1637 814 Unit (also specify 1-1730 077 brake pedal pull back Spring). . .	1631 913	1676 486	1631 913	1631 913	----	1676 486	----
5-100-132	CLIP, Push Rod Retainer	1631 919	----	1631 919	1631 919	----	----	----
5-100-135	SPRING, Power Piston Valve	1631 928	----	1631 928	1631 928	----	----	----
5-100-136	RETAINER, Power Piston Valve Spring	1631 927	----	1631 927	1631 927	----	----	----
5-100-137	PIN, Piston Plate Spiral.	----	----	----	----	1675 009	----	1675 009
5-100-138	PLATE, Piston	1631 899	----	1631 899	1639 525	1675 007	----	1739 832
5-100-139	PACKING, Piston	----	----	----	----	1675 010	----	1739 834

* Indicates use as required.

Numerals in parentheses () refer to notes.

Printed in U.S.A.

☐ Indicates parts not listed in any previous parts book.

Prices and specifications subject to change without notice.

* Indicates change or addition.

1955-58 PASSENGER CAR PARTS LIST

POWER UNITS

PART TYPE CODE	PART NAME	POWER UNITS						
		1555 313	1637 814 AND 1731 216	1639 512	1639 515	1671 546 AND 1731 217	1675 213 AND 1828 377	1735 620
5-100-140	PLATE, Piston Packing	----	----	----	----	1675 012	----	1739 836
5-100-141	RING, Piston Packing	----	----	----	----	1675 011	----	1739 835
5-100-142	GUIDE, w/SLEEVE	1631 920	1674 977	1631 920	1631 920	----	1820 009	----
5-100-143	WICK, Piston Packing	----	----	----	----	1675 013	----	1675 013
5-100-144	PLATE, Packing Wick Retaining	----	----	----	----	1675 014	----	1739 838
5-100-145	BEARING, Guide Sleeve	1631 939	1674 970	1631 939	1631 939	----	1674 970	----
5-100-146	SCREW, Piston Packing Plate	----	----	----	----	1675 143	----	1675 143
5-100-148	SEAL, Bearing to Guide Sleeve	----	1674 972	----	----	----	1674 972	----
	“O” Ring, Bearing to Mounting Plate	----	1674 974	----	----	----	1674 974	----
	“O” Ring, Bearing to Guide Sleeve	----	1673 629	----	----	----	----	----
5-100-150	RETAINER, Piston Guide Seal Wick	1631 937	----	1631 937	1631 937	----	----	----
5-100-155	SEAL, Air Valve	----	1674 949	----	----	----	1674 949	----
5-100-156	RETAINER, Air Valve Seal	----	1674 950	----	----	----	1674 950	----
5-100-158	HOSE, Vacuum	----	----	----	----	1675 124	----	1675 124
5-100-159	VALVE, Vacuum	----	1674 952	----	----	----	1674 952	----
	SEAT, Poppet Valve	----	----	----	----	1675 118	----	1675 118
5-100-160	SPRING, Vacuum Valve	----	1674 955	----	----	1675 122	1674 955	1675 122
5-100-161	SEAL, Vacuum Valve	----	1674 949	----	----	----	1674 949	----
5-100-162	RETAINER, Vacuum Valve Seal	----	1674 954	----	----	----	1674 954	----
5-100-163	DIAPHRAGM, Poppet Valve Seat	----	----	----	----	1675 123	----	1675 123
5-100-168	EXTENSION, Valve Stem, w/CUP	----	----	----	----	1675 109	----	1675 109
5-100-169	ROD, Valve, w/BUMPER	----	1673 633	----	----	1675 017	1820 012	----
5-100-171	“O” RING, Valve Operating Rod Bumper	----	1674 989	----	----	----	1674 989	----
5-100-172	COLLAR, Valve Stem Friction	----	----	----	----	1675 125	----	----
5-100-173	SPRING, Valve Stem, for 1671 546 Unit (also specify 1-1730 077 brake pedal pull back Spring)	----	----	----	----	1676 487	----	----
	SPRING, Valve Stem, for 1731 217 Unit	----	----	----	----	1676 487	----	----
	SPRING, Valve Stem	----	----	----	----	----	----	1676 487
5-100-174	RING, Valve Stem Snap	----	----	----	----	1675 104	----	1675 104
5-100-175	SEAL, Valve Stem	----	----	----	----	1675 128	----	1675 128
5-100-176	DIAPHRAGM, Valve Applying	----	----	----	----	1675 112	----	1675 112
5-100-177	RETAINER, Diaphragm	----	----	----	----	1675 113	----	1675 113
5-100-178	WASHER, Diaphragm Retainer	----	----	----	----	1675 117	----	1675 117
5-100-179	HOUSING, Valve	----	1674 942	----	----	----	1674 942	----
5-100-180	RETAINER, Valve Stem Spring	----	----	----	----	1673 620	----	1673 620
5-100-181	“O” RING, Valve Housing to Guide	----	1674 957	----	----	----	1674 957	----
	“O” RING, Valve Housing to Cover	----	1674 991	----	----	----	1674 991	----
5-100-182	WASHER, Valve Stem	----	----	----	----	1673 637	----	1820 025
5-100-183	PLATE, Air Cleaner, w/TUBE	----	----	----	----	1675 141	----	1820 002
	COVER, Valve Housing, for 1675 213 Unit	----	----	----	----	----	1820 013	----
	For 1828 377 Unit	----	----	----	----	----	1828 385	----
	COVER, Valve Housing	----	1820 013	----	----	----	----	----
5-100-184	GASKET, Air Cleaner Plate	----	----	----	----	1675 138	----	----
5-100-186	END, Valve Stem	----	----	----	----	----	----	1739 849
5-100-188	SCREW, Diaphragm Retainer	----	----	----	----	1675 143	----	1675 143
5-100-200	BELLOWS, Power Unit	----	1674 958	----	----	----	1820 007	----
5-100-201	SPRING, Bellows Return	----	----	----	----	----	1820 010	----
5-100-202	RETAINER, Bellows Return	----	----	----	----	----	1674 965	----
5-100-203	PLATE, Bellows Spacer	----	1674 959	----	----	----	1820 008	----
5-100-206	PLATE, Mounting, Inner	----	1674 966	----	----	----	1674 966	----
	Outer	----	1674 968	----	----	----	1674 968	----
	End	----	----	----	----	1675 130	----	1739 851
5-100-207	BOLT, End Plate	----	----	----	----	1675 146	----	1675 146
	Mounting Ring	----	----	----	----	1735 640	----	1735 640
5-100-208	RING, Mounting	----	----	----	----	1675 132	----	1675 132
5-100-210	WASHER, Stop and Seal	----	1674 975	----	----	----	1674 975	----

* Indicates use as required.

Numerals in parentheses () refer to notes.

Printed in U.S.A.

⊠ Indicates parts not listed in any previous parts book.
Nov. 10, 1958 Supersedes Oct. 10, 1957.

Prices and specifications subject to change without notice.
* Indicates change or addition.

CODE	PART NAME AND DESCRIPTION	NO. OF CYL.	PLYMOUTH	DODGE	DESOTO	CHRYSLER AND IMPERIAL	PER CAR	PART NUMBER
5-102-O POWER BRAKE VACUUM TANK								
5-102-2	TANK, Power Brake Vacuum, w/PowerFlite	6-8	56	-	-	-	1	1671 230
	w/Auto. Trans.	6-8	-	56	-	-	1	1672 430
	S27, LS1, LC1 w/o Auto. Pilot	8	-	-	56	56	1	1671 229
	S25, S26, LS2, LS3, C75, C76, LC2, LC3, IM, LY1, w/o Auto Pilot	6-8	57-58	57-58	57-58	58	1	*1735 622
	w/Auto. Pilot	8	-	-	57-58	57-58	1	*1820 218
5-102-7	SCREW, Power Brake Vacuum Tank Bracket	8	-	-	-	58	1	⊠1850 848
5-102-9	BRACKET, Vacuum Tank, Lower LC1 w/Auto. Pilot	6-8	56-58	56-58	56-58	56-58	3	6006 120
	LC2, LC3, LY1, w/Auto. Pilot	8	-	-	-	58	1	⊠1856 574
		8	-	-	-	58	1	⊠1850 846
5-105-O POWER BRAKE CHECK VALVE								
5-105-1	VALVE, Vacuum Chamber Check, use with 1555 313, 1639 512, 1639 515 Power Unit.	6-8	55-56	55-56	55	55	1	1637 822
		6-8	56-58	56-58	56-58	56-58	1	1672 436
5-105-12	GASKET, Vacuum Chamber Check Valve, use with 1637 822, Check Valve Assy.	6-8	55-56	55-56	55	55	1	1637 825
	w/Auto. Trans.	6-8	56	56	56	56	1	1674 998
5-105-16	"O" RING, Check Valve Body to Vacuum Chamber, use with 1555 313, 1639 512, 1639 515 Power Unit	6-8	55-56	55-56	55	55	1	1631 956
5-105-17	SPRING, Check Valve, use with 1631 954 Body Assy.	6-8	55	55	55	55	1	1631 959
	use with 1637 822 Valve Assy.	6-8	55-56	55-56	55	55	1	1637 827
	use with 1672 436 Valve Assy.	6-8	56	56	56	56	1	1674 996
5-105-20	VALVE, Check Valve Floating, use with 1631 954 Body Assy.	6-8	55	55	55	55	1	1631 957
	use with 1637 822 Valve Assy.	6-8	55-56	55-56	55	55	1	1637 826
	use with 1672 436 Valve Assy.	6-8	56	56	56	56	1	1674 995
5-107-O POWER BRAKE TUBE								
5-107-21	TUBE, Vacuum Tank to Manifold	6	56-58	56-58	-	-	1	1673 630
		8	56-58	57-58	57-58	57-58	1	1671 537
	D63	8	-	56	-	-	1	1671 545
		8	-	-	56	56	1	1671 549
	TUBE, Engine Intake Manifold, w/o Power Flite, except C70	6-8	55-56	55-56	55-56	55-56	1	1488 436
	w/Power Package, P27, D55, D63, C67	8	55	55-56	55	55	1	991 998
	Nut	6-8	55	55	55	55	1	137 401
5-110-O POWER BRAKE CONNECTIONS								
5-110-18	CONNECTOR, Intake Manifold Tube							
	P29, D63, w/Std. Trans.	8	55-56	55-56	55	55	1	143 426
	P28, D62, w/Std. Trans.	6	55-56	55-56	-	-	1	1630 139
	P29, D63, w/PowerFlite	8	56	56	-	-	1	1730 040
	P28, D62, w/PowerFlite	6-8	56	56	56	56	1	143 426
	P30, P31, S25, S26, All, C75, C76, w/Std. Trans.	6-8	57-58	-	57-58	57-58	1	⊠1829 382
	D72, All, D66, D67, D70, D71; S27, LS1, w/Std. Trans. and PowerFlite	6-8	-	57-58	57-58	-	1	⊠1829 382
	LD2, S27, LS2, LS3, C75, C76, IM, w/Auto. Trans.	8	58	57-58	57-58	57-58	1	1735 641
5-111-O POWER BRAKE HOSE								
5-111-17	VACUUM HOSE (100 foot roll, 11/32" I.D., sold by the inch)	6-8	55-56	55-56	55-56	55-56	★	1064 541
	(100 ft. roll, 1/2" I.D., sold by the inch)	6-8	55-58	55-58	55-58	55-58	★	1671 650

★ Indicates use as required.

Numerals in parentheses () refer to notes.

Printed in U.S.A.

⊠ Indicates parts not listed in any previous parts book.

Prices and specifications subject to change without notice.

* Indicates change or addition.

1955-58 PASSENGER CAR PARTS LIST

BRAKE - SERVICE

CODE	PART NAME AND DESCRIPTION	NO. OF CYL.	PLYMOUTH	DODGE	DESOTO	CHRYSLER AND IMPERIAL	PER CAR	PART NUMBER
5-112-0 BOOSTER BRAKE HOSE CLAMP								
5-112-1	LOCK, Brake Hose Spring, P28, P29, D62, D63, w/Std. Trans.	6-8	55-56	55-56	55	55	1	392 911
	CLAMP, Hose, P28, P29, D62, D63, w/Std. Trans.	6-8	56	56	-	-	2	448 797
	w/Auto Trans.	6-8	56	56	56	56	2	870 469
		6-8	56-58	56-58	56-58	56-58	4	* 272 848
5-113-0 POWER BRAKE AIR CLEANER								
5-113-17	FILTER, Air, use with 1555 313, 1639 512, 1639 515 Power Unit	6-8	55-56	55-56	55	55	1	1631 944
	use with 1637 814, 1731 216, 1675 213 and 1828 377 Power Unit	6-8	56-58	56-58	56-58	56-58	1	*1674 963
	use with 1671 546, 1731 217 and 1735 620 Power Unit	6-8	56-58	56-58	56-58	56-58	1	*1675 142
5-113-19	COVER, Air Filter, use with 1555 313, 1639 512, 1639 515 Power Unit	6-8	55-56	55-56	55	55	1	1631 945
	use with 1671 546 and 1731 217 Power Unit	8	-	-	56	56	1	*1676 497
5-113-22	BOOT and INSERT, Air Filter Cover, use with 1555 313, 1639 512, 1639 515 Power Unit	6-8	55-56	55-56	55	55	1	1631 948

NOTES

★ Indicates use as required.

Numerals in parentheses () refer to notes.

Printed in U.S.A.

☐ Indicates parts not listed in any previous parts book.

Prices and specifications subject to change without notice.

* Indicates change or addition.